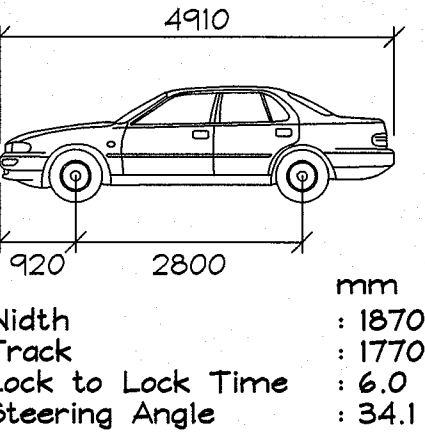


- NOTES:
- ALL DIMENSIONS TO BE VERIFIED ON SITE BY BUILDER BEFORE COMMENCING WITH WORK.
 - FOR GENERAL NOTES REFER TO DRAWING NUMBER: C01.

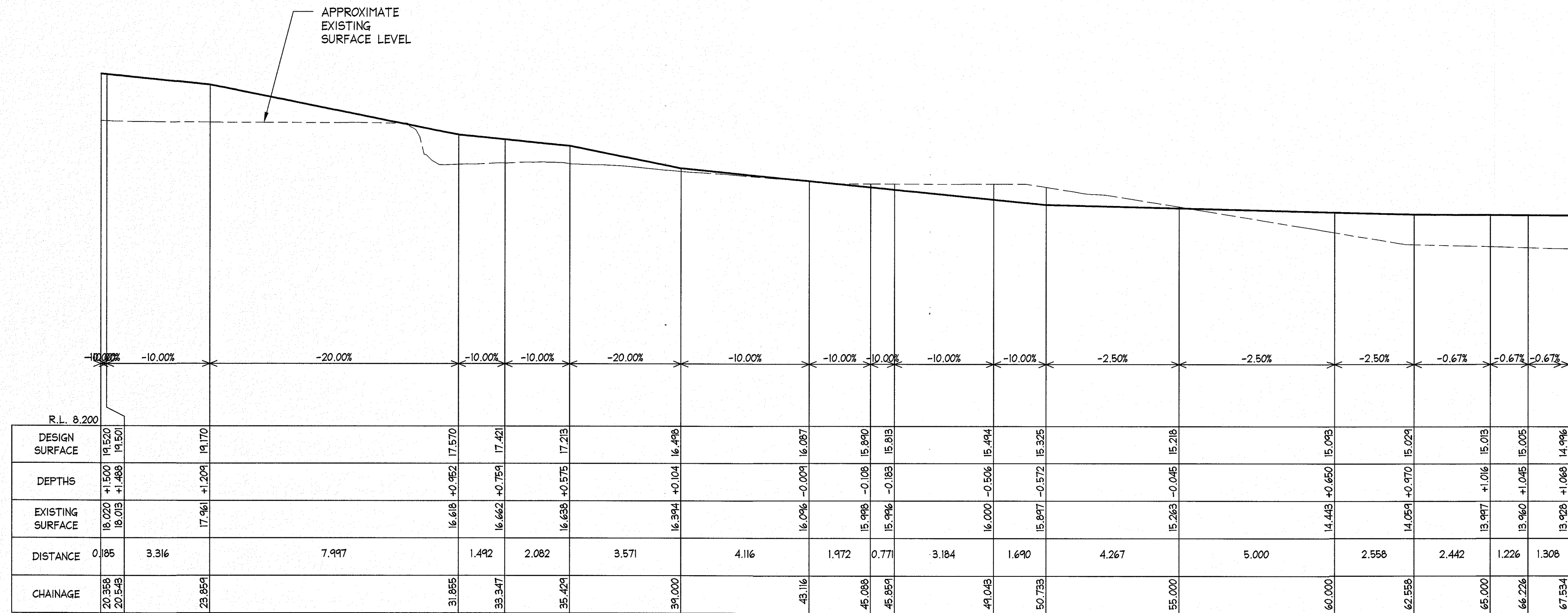


B85 PROFILE:



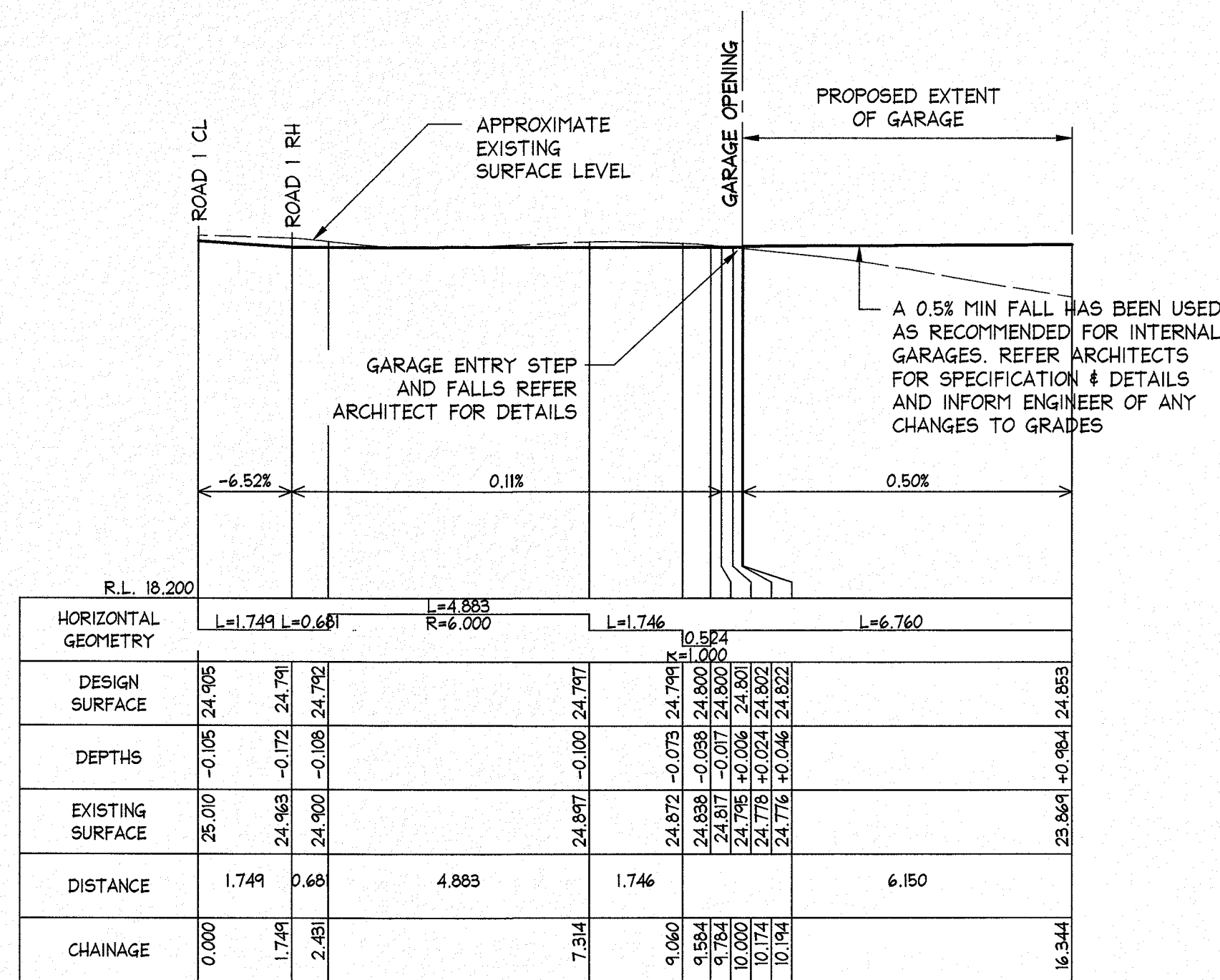
GENERAL NOTES:

DRAINAGE (SUCH AS GRATED DRAINS) REFER STORMWATER MANAGEMENT DRAWINGS BY NB CONSULTING PTY LTD TO DISCHARGE TO STORMWATER IN AN APPROVED MANNER IN ACCORDANCE WITH AS3500 - TYPICAL.



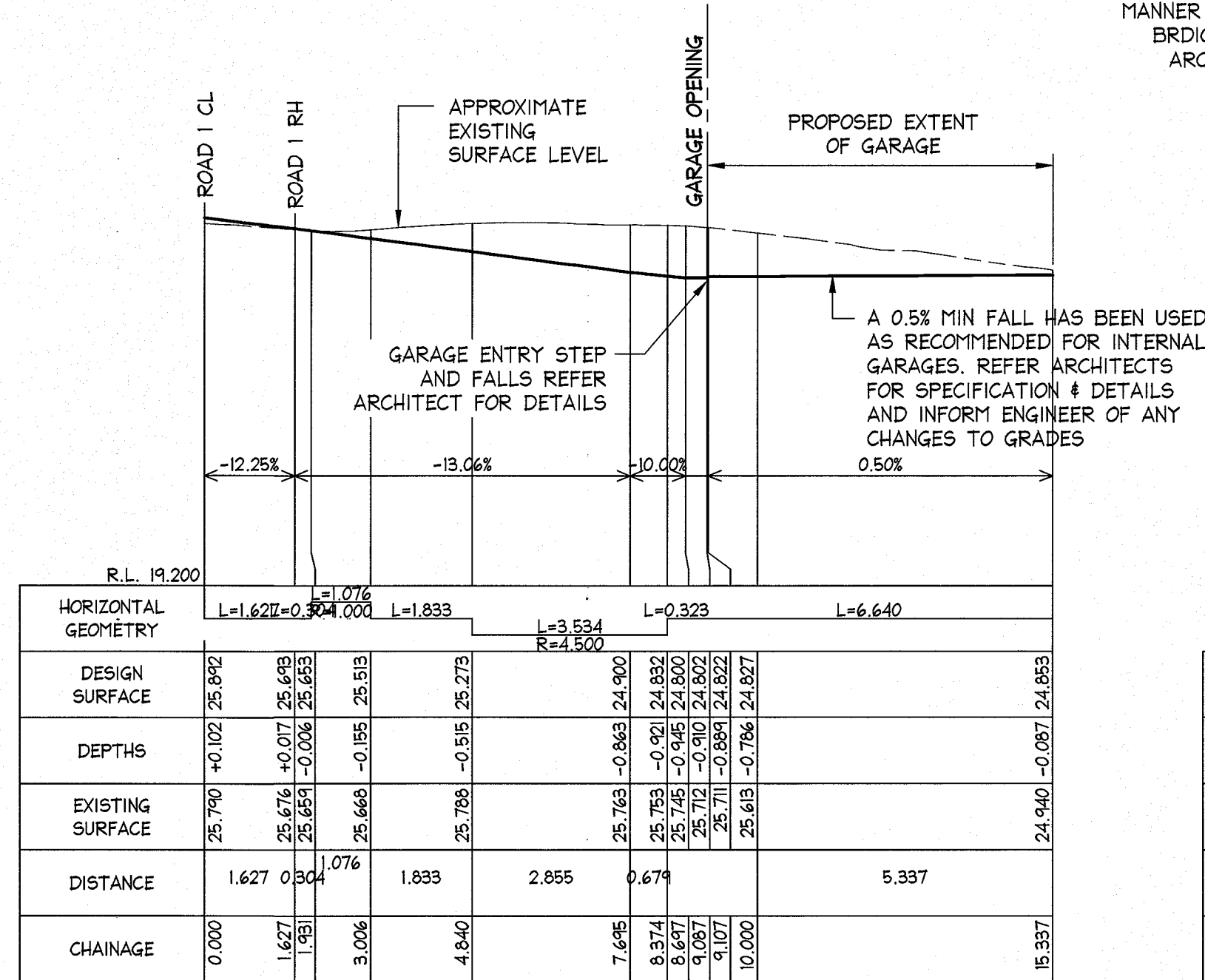
LONGITUDINAL SECTION ROAD RD02 CL
FROM CH: 20.358 TO CH: 67.534
SCALES: HORIZONTAL 1:100 VERTICAL 1:100

SECTION 4
C09/C04



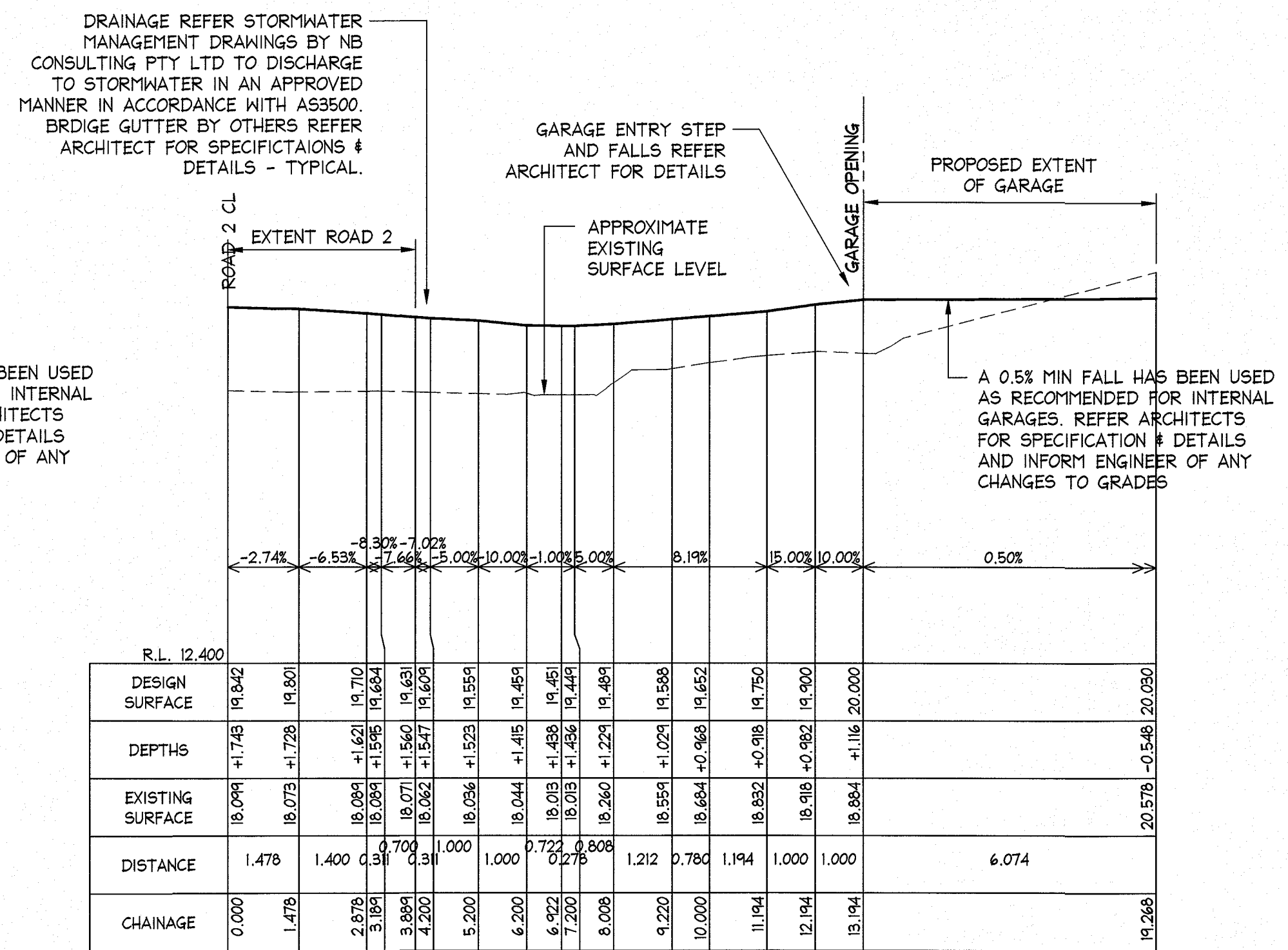
LONGITUDINAL SECTION DRIVEWAY 10 LH
FROM CH: 0.000 TO CH: 16.344
SCALES: HORIZONTAL 1:100 VERTICAL 1:100

SECTION 5
C01



LONGITUDINAL SECTION DRIVEWAY DR10 RH
FROM CH: 0.000 TO CH: 15.337
SCALES: HORIZONTAL 1:100 VERTICAL 1:100

SECTION 6
C01



LONGITUDINAL SECTION DRIVEWAY DR02 LH
FROM CH: 0.000 TO CH: 19.268
SCALES: HORIZONTAL 1:100 VERTICAL 1:100

SECTION 7
C03

ISSUED FOR D.A. SUBMISSION ONLY
NOT FOR CONSTRUCTION

IF IN DOUBT ASK

NB Consulting Engineers

AI

28/11/2016			A			ISSUED FOR DA SUBMISSION ONLY - NOT FOR CONSTRUCTION			D.K.			L.G.		
Date:	Issue:	Description:	By:	Review:										
			DOCUMENT CERTIFICATION			NB Consulting Engineers			Architect:			Client:		
			Date: Rick G Wray			STRUCTURAL - CIVIL - STORMWATER - REMEDIAL			MARK HURCUM DESIGN			Proposed Roads and Driveways		
			BE(Civil), CPENG, MIEAust, NER, RPEQ 08293			A.C.N. 076 121 616 A.B.N. 24 076 121 616			PRACTICE PTY LTD			AT 96-104 CABARITA RD, AVALON BEACH		
			(Director NB Consulting Engineers)			Sydney: Ph: (02) 9984 7000 Fax: (02) 9984 7444						Drawing Title:		
			The copyright of this drawing remains with Northern Beaches Consulting Engineers Pty Ltd. Trading as NB Consulting Engineers			Suite 207, 30 Fisher Road Dee Why N.S.W. 2099			MERAKI DEVELOPMENTS PTY LTD			Job No:		
						Gold Coast: Ph: (07) 5631 4744						180411		
						Unit 8, 1726 Gold Coast Highway Burleigh Heads QLD 4220						C09		
						E: nb@nbconsulting.com.au W: www.nbconsulting.com.au						Issue:		
												A		

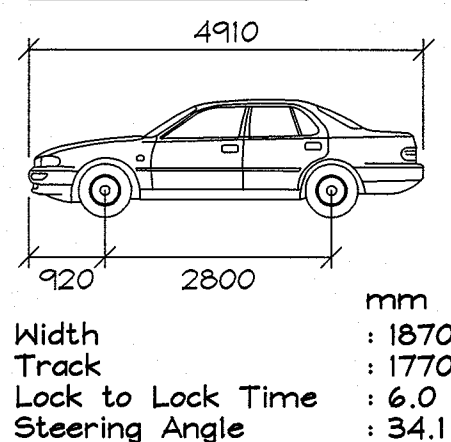
NOTES:

- ALL DIMENSIONS TO BE VERIFIED ON SITE BY BUILDER BEFORE COMMENCING WITH WORK.
- FOR GENERAL NOTES REFER TO DRAWING NUMBER: C01.

www.dialbeforeyoudig.com.au



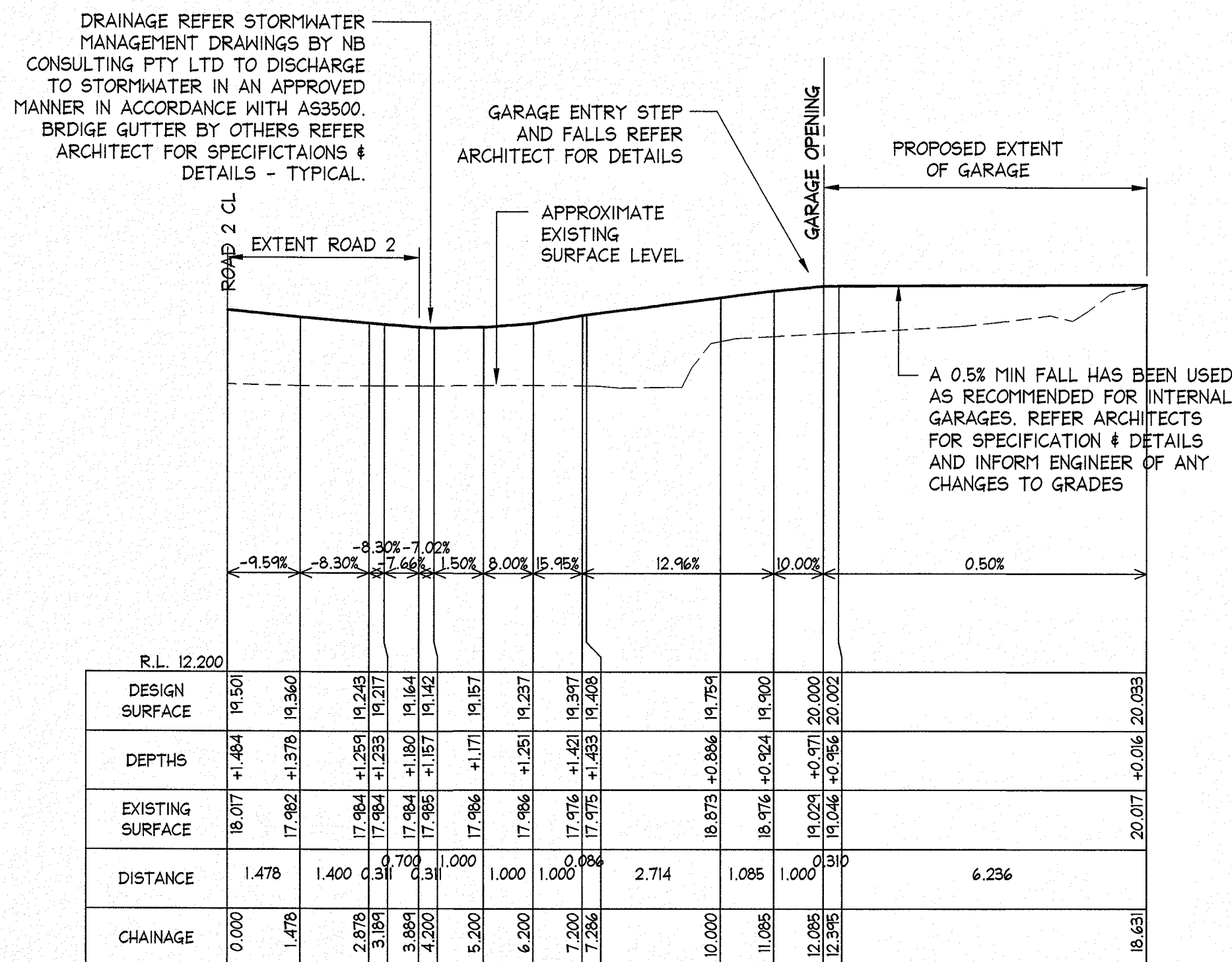
B85 PROFILE:



GENERAL NOTES:

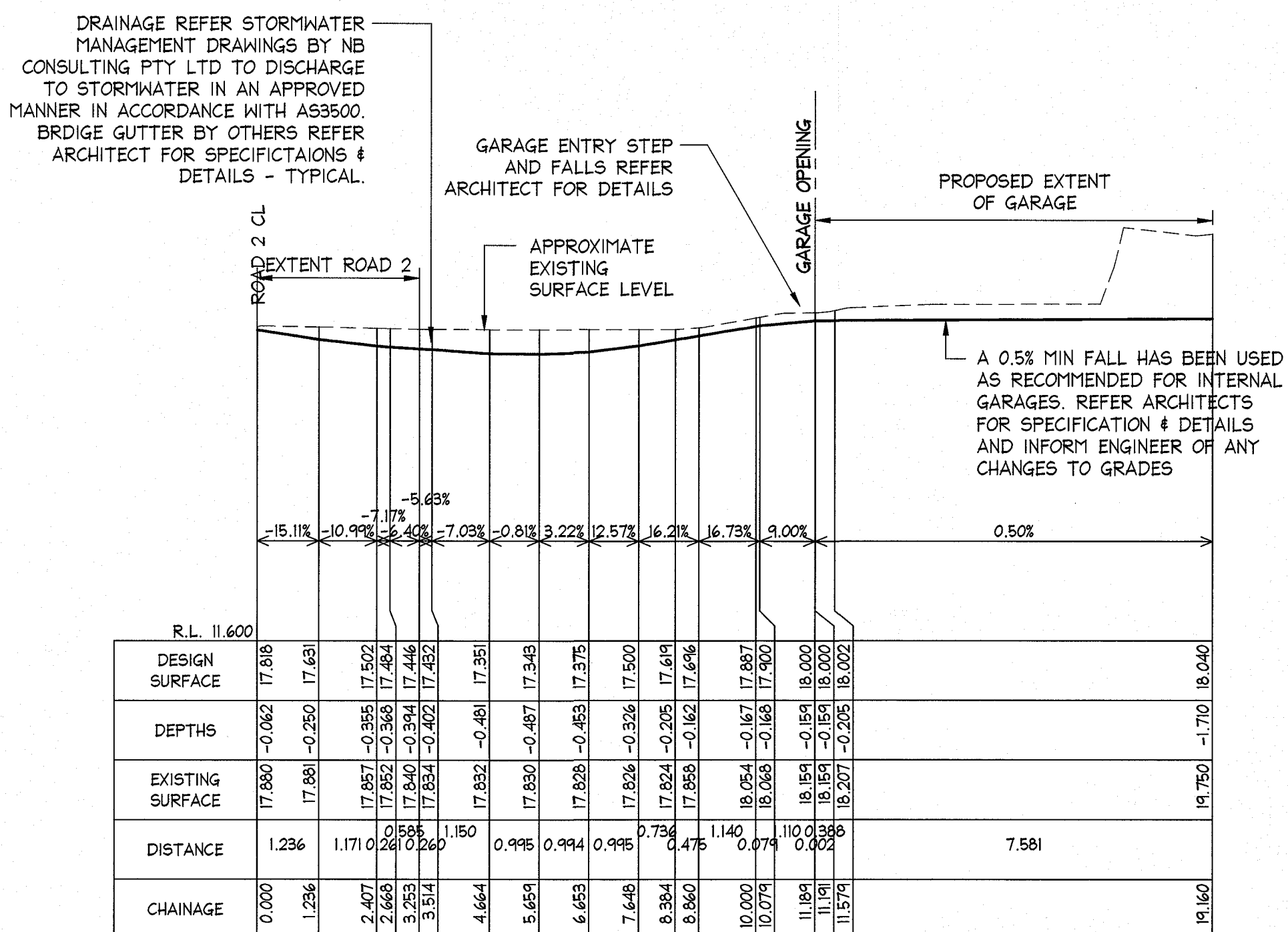
- REFER AS/NZS 2890.1

DRAINAGE (SUCH AS GRATED DRAINS) REFER STORMWATER MANAGEMENT DRAWINGS BY NB CONSULTING PTY LTD TO DISCHARGE TO STORMWATER IN AN APPROVED MANNER IN ACCORDANCE WITH AS3500 - TYPICAL.



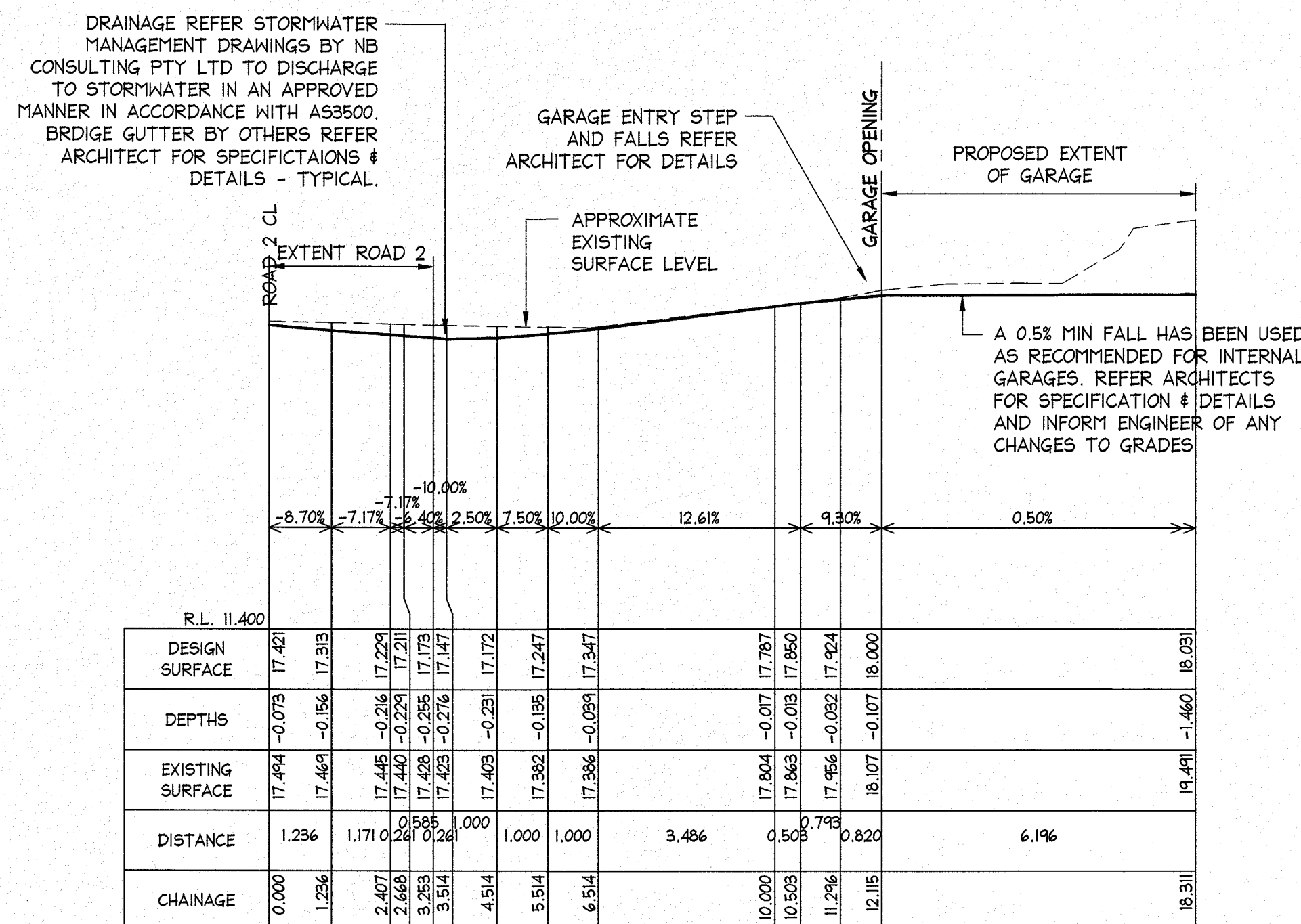
LONGITUDINAL SECTION DRIVEWAY DR02 RH
FROM CH: 0.000 TO CH: 18.631
SCALES: HORIZONTAL 1:100 VERTICAL 1:100

SECTION 8
C03



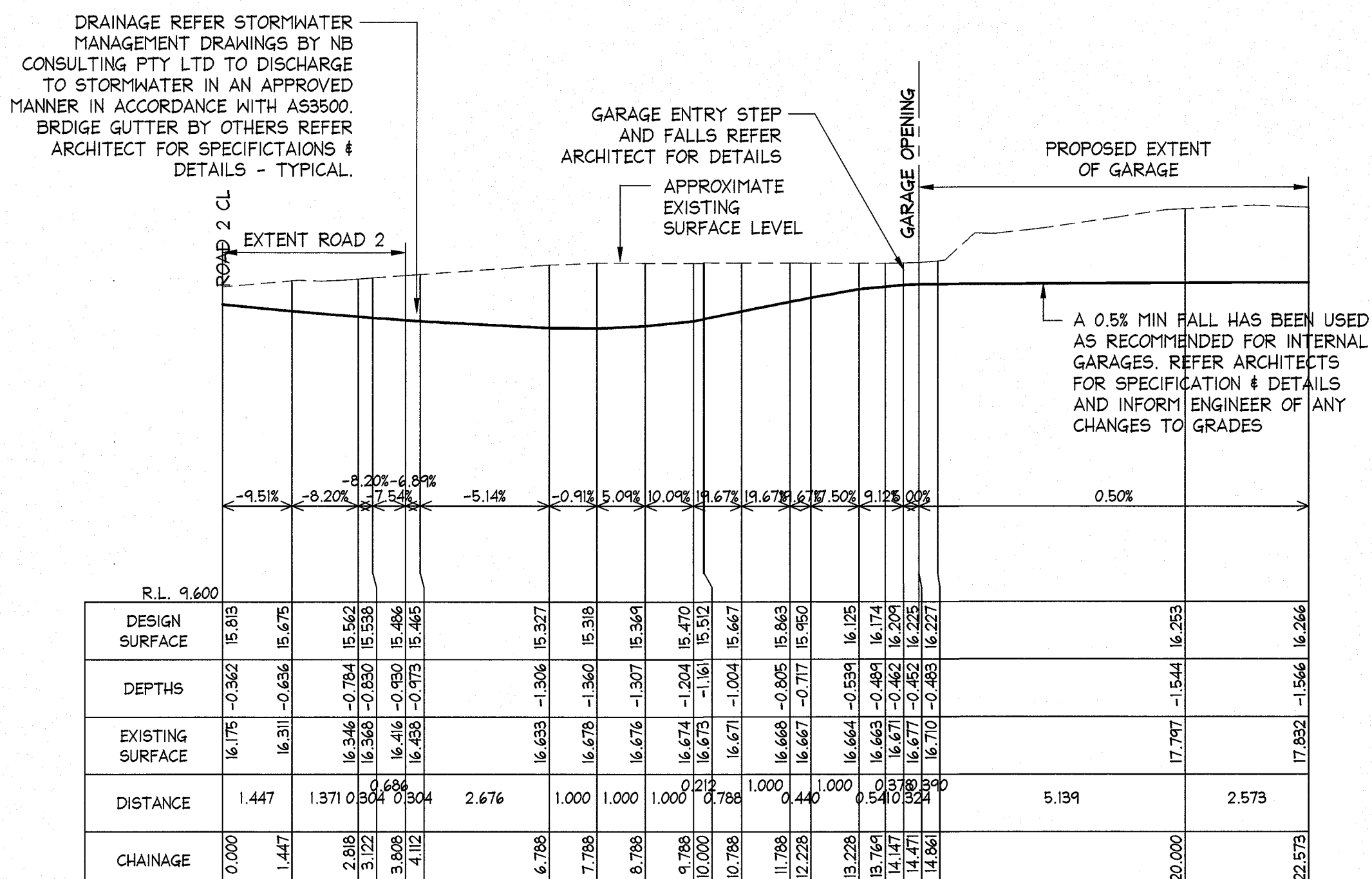
LONGITUDINAL SECTION DRIVEWAY DR03 LH
FROM CH: 0.000 TO CH: 19.160
SCALES: HORIZONTAL 1:100 VERTICAL 1:100

SECTION 9
C04



LONGITUDINAL SECTION DRIVEWAY DR03 RH
FROM CH: 0.000 TO CH: 18.311
SCALES: HORIZONTAL 1:100 VERTICAL 1:100

SECTION 10
C04



LONGITUDINAL SECTION DRIVEWAY DR04 LH
FROM CH: 0.000 TO CH: 22.573
SCALES: HORIZONTAL 1:100 VERTICAL 1:100

SECTION 11
C05

ISSUED FOR D.A.
SUBMISSION ONLY
NOT FOR
CONSTRUCTION

IF IN DOUBT ASK

NB Consulting Engineers

AI

			DOCUMENT CERTIFICATION		NB Consulting Engineers		Architect:		Project:		Date:	Design:	Drawn:
			Date: Rick G Wray		STRUCTURAL - CIVIL - STORMWATER - REMEDIAL A.C.N. 078 121 616 A.B.N. 24 078 121 616		MARK HURCUM DESIGN PRACTICE PTY LTD		PROPOSED ROADS AND DRIVEWAYS AT 96-104 CABARITA RD, AVALON BEACH		SEP 2018	D.K.	D.K.
			By: Review:		Sydney: Ph: (02) 9984 7000 Fax: (02) 9984 7444 Suite 207, 30 Fisher Road Dee Why N.S.W. 2099		Client:		Drawing Title:		Job No:	Drawing No:	Issue:
					Gold Coast: Ph: (07) 5631 4744 Unit 8, 1728 Gold Coast Highway Burleigh Heads QLD 4220		MERAKI DEVELOPMENTS PTY LTD		LONGITUDINAL SECTION - SHEET 4		180411	C10	A
					E: nb@nbconsulting.com.au W: www.nbconsulting.com.au								