

FORESTWAY SHOPPING CENTRE
LANDSCAPE DA PACKAGE

Prepared for

REVELOP

January 2025



Australia
China
South East Asia

Follow us on



placedesigngroup.com

Report title	Forestway Shopping Centre Development Application
Document number	2521046
Prepared for	Revelop
Authors	Elda Esho
Revision number	6
Revision issue date	07 th January 2025
Approved	LI
Reason for revision	Development Application

Disclaimer: This report has been prepared in accordance with the scope of services described in the contract or agreement between Place Design Group Pty Ltd ACN 082 370063 and the Client. The report relies upon data, surveys, measurements and results taken at or under the particular times and conditions specified herein. Any findings, conclusions or recommendations only apply to the aforementioned circumstances and no greater reliance should be assumed or drawn by the Client. Furthermore, the report has been prepared solely for use by the Client and Place Design Group accepts no responsibility for its use by other parties.

CONTENTS

LANDSCAPE DESIGN STATEMENT	4
OVERALL LANDSCAPE PLAN	5
PLANTING CONCEPT PLAN	6
PLANTING SCHEDULE	7
PLANTING PALETTE	8
DETAIL LANDSCAPE PLAN	9
DETAIL LANDSCAPE PLAN	10
HARDSCAPE PALETTE	11

LANDSCAPE DESIGN STATEMENT

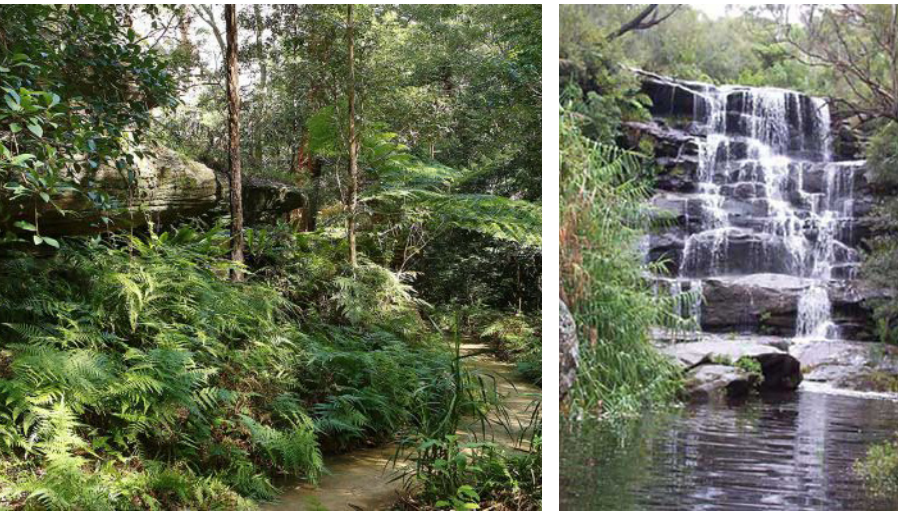
Environmental Context and Understanding

The site is identified in the northern Beaches Council Public Space and Vision Guidelines as a centre with bush character. Forest Way is identified as a RMS road and Russell Ave and Grace Ave as local roads.

It is situated on a higher rainfall, shale sandstone transitional area of the Hornsby Plateau.

To the west of the site is Garigal National Park: a ‘Wildlife haven’. The park comprises coastal, Eucalyptus forest and Heathland environments. Common flora includes grey mangroves, old man banksias, grass trees and scribbly gums. Fauna includes the Eastern water dragon, and several threatened species such as the red-crowned toadlet, tiger quoll, white-bellied sea eagle, powerful owl, swift parrot, Eastern Bentwing bat and grey-headed flying fox.

By drawing on the local environmental context in our design strategy, we aim to bring a contextually relevant and educational landscape design to the Forestway shopping centre experience.



Plazas, Terraces and Outdoor Dining

The landscape design approach aims to enhance the social and aesthetic experience of the centre by providing a variety of destination spaces that compliment the architectural form. The strong geometry of the building provides inspiration for a unique, geometric paving design/banding and planted garden beds. Several outdoor terraces such as the northern plaza, and at Sorlie Place will respond to the architectural form through this hard and soft landscaping approach and provide outdoor social gathering places. Level changes generally step down to the street and this creates an opportunity for attractive high-quality materials combined with trailing planting to form a beautiful ‘green edge’.



Green Edges

Feature green edges along Grace Avenue provide acoustic buffering for residents living opposite the loading dock area on Grace Avenue. The greening will reduce noise and combined with street tree planting will add to the green envelope of the shopping centre.



Planting

The planting scheme draws on the environmental context of the site and its surroundings. The area is at the heart of various vegetation/ecological communities including Coastal Sandstone Gully Forest, Sydney North Exposed Sandstone Woodland, Sydney Ironside Bloodwood Silvertop Ash Forest and Coastal Shale-Sandstone Forest. These communities comprise native flora and fauna which have informed and inspired design decisions; the planting palette includes species which are prevalent in the surrounding communities.

We aim to bring a contextually relevant and educational soft landscape context to the Forestway centre experience that is hardy and robust and appropriate to the various microclimates. Indicative street tree planting is reflective of Northern Beaches Council preferred street tree selections and will provide shade to the pedestrian experience as well as additional acoustic buffering to adjacent residents along Grace Avenue.



OVERALL LANDSCAPE PLAN



FORESTWAY SHOPPING CENTRE LANDSCAPE DEVELOPMENT APPLICATION

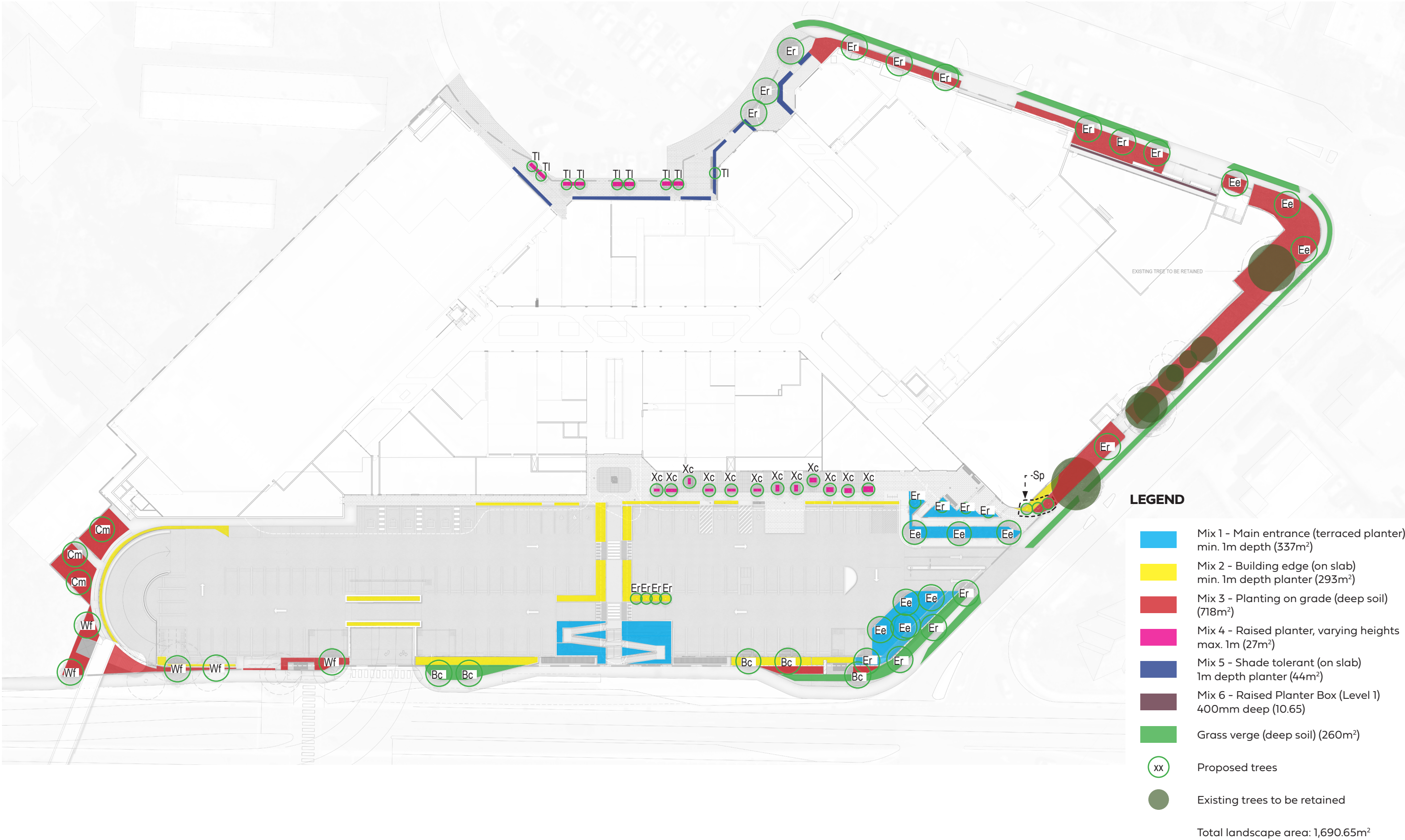


Place Design Group Pty Ltd
Level 4 / 10 Elizabeth St
Waterloo, NSW
2017, Australia
T + 61 2 9290 3300

DATE	PROJECT NO.	REVISION	PAGE NO.
07/01/2025	2521046	06	5

0 7 14 21M/ 1:250@A0 / 1:707 @A3

PLANTING CONCEPT PLAN



FORESTWAY SHOPPING CENTRE LANDSCAPE DEVELOPMENT APPLICATION

PLANTING SCHEDULE

Forest way - PLANT SCHEDULE						
SYM	Botanical Name	Common Name	Mature Height	Pot Size	Spacing /m2	Quantity
TREES						
EVERGREEN						
Bc	Buckinghamiana celsissima	Ivory Curl	30m	75L	As shown	
Cm	Corymbia maculata	Spotted Gum	50m	75L	As shown	
EE	Elaeocarpus Eumundi	Smooth-leaved quandong	10m	75L	As shown	
Er	Elaeocarpus Reticulatus	Blueberry Ash	15m	75L	As shown	
Sp	Syzygium Paniculatum	Magenta Cherry	8m	75L	As shown	
Tl	Tristaniopsis Laurina	Water Gum	10m	75L	As shown	
Wf	Waterhousia floribunda	Weeping Lilly Pilly	30m	75L	As shown	
Xc	Xanthostemon Chrysanthus	Golden Penda	8m	75L	As shown	
MIX 1 - Main Entrance						
Af	Anigozanthos Flavidus	Red Kangaroo Paw	0.8	200mm	4	
Ba	Dietes grandiflora	Wild iris	1.2m	200mm	4	
De	Doryanthes excelsa	Gymea Lily	2m	200mm	As shown	
Dr	Dichondra repens 'Silver Falls'	Silver falls	0.1m	200mm	9	
Lm	Liriope muscari 'Variegata'	Lily Turf	0.4m	200mm	8	
Lt	Lomandra longifolia 'Tanika'	Mat rush	0.6m	150mm	6	
Wfg	Westringia fruticosa 'Grey Box'	Grey Box	2m	200mm	4	
Cd	Carex dolichostachya 'Kaga Nishiki'	Kaga Nishiki	0.8	200mm	5	
MIX 2 - Edge of Building						
Aa	Agave attenuata 'Ray of Light'	Fox Tail Agave	1.5m	200mm	1	
Dc	Dianella caerulea 'Casa Blue'	Blue Flax Lily	0.5-1m	200mm	8	
Dr	Dichondra repens 'Silver Falls'	Silver falls	0.1m	200mm	9	
Ro	Rosmarinus officinalis 'Prostratus'	Creeping Rosemary	0.5m	140mm	4	
Sm	Senecio mandraliscae	Blue Chalksticks	0.3m	200mm	6	
Wfz	Trachelospermum 'tricolour'	Tricolour	0.5m	200mm	3	
Zf	Zamia furfuracea	Cardboard plant	1.5m	200mm	5	
MIX 3 - Deep Soil Area Planting						
Lm	Liriope muscari 'Variegata'	Lily Turf	0.4m	200mm	8	
Pl	Poa labillardieri 'Eskdale'	Poa Eskdale	0.6m	200mm	6	
Pa	Plectranthus argentatus 'Silver shield'	Silver Spurflower	1m	200mm	3	
Af	Anigozanthos Flavidus	Red Kangaroo Paw	0.8	200mm	3	
Oj	Ophiopogon japonicus	Mondo Grass	0.5	200mm	6	
Vh	Viola hederacea	Native violet	0.15m	200mm	8	
MIX 4 - Raised Planters						
Ba	Dietes grandiflora	Wild iris	1.2m	200mm	4	
Aa	Agave attenuata 'Ray of Light'	Fox Tail Agave	1.5m	200mm	1	
Ta	Liriope 'Amethyst'	Liriope	0.4m	200mm	8	
Vh	Viola hederacea	Native violet	0.15m	200mm	8	
MIX 5 - Shade Tolerant						
Fg	Festuca glauca	Elijah Blue	0.3	200mm	3	
Oj	Ophiopogon japonicus	Mondo Grass	0.5	200mm	6	
An	Asplenium nidus	Birds Nest Fern	1m	200mm	3	
Bs	Blechnum 'silver lady'	Silver Lady Fern	1.2m	200mm	3	
Ca	Cissus antarctica	Kangaroo Vine	4m	200mm	3	
Cm	Clivia miniata 'yellow'	Yellow Kafir Lily	0.4m	200mm	6	
MIX 6 - Raised Planter Box (Level 1)						
AcF	Acacia cognata 'Fettucini'	Bower Wattle	0.5	200mm	3	
ABD	Anigozanthos 'Bush Diamond'	Kangaroo Paw	0.4	200mm	6	
Dr	Dichondra repens 'Silver Falls'	Silver falls	0.1m	200mm	9	
PRE	Peperomia clusiifolia 'Red Edge'	Red Edge	0.3	200mm	3	

The sire is considered an IPA as per the bushfire advice.

- Tree canopy is less than 15% of the total area.
- Lower limbs below 2m to be removed during maintenance.
- No shrubs to be planted under trees.
- Shrubs set back from doors and windows by the distance of twice the height.
- Canopies seperated by 2m at mature growth.
- Shrubs no more than 10% of the groundcover.

TREES



Buckinghamiana celsissima



Corymbia maculata



Elaeocarpus Eumundi



Elaeocarpus Reticulatus



Syzygium Paniculatum



Tristaniopsis Laurina

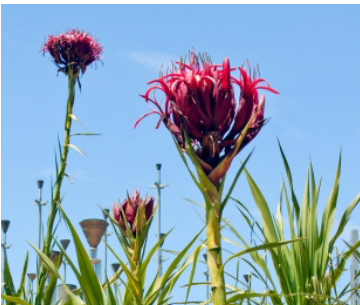


Waterhousia floribunda



Xanthostemon Chrysanthus

MIX 1 - MAIN ENTRANCE



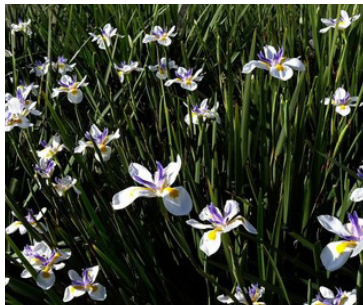
Doryanthes excelsa



Liriope muscari 'Variegata'



Westringia fruticosa 'Grey Box'



Dietes grandiflora



Dichondra repens 'Silver Falls'



Lomandra longifolia 'Tanika'



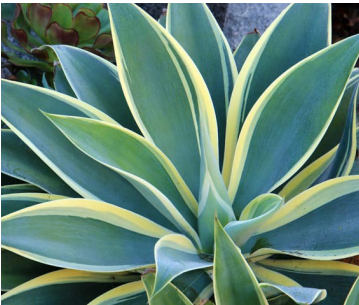
Anigozanthos Flavidus



Carex dolichostachya 'Kaga Nishiki'

PLANTING PALETTE

MIX 2 - BUILDING EDGE



Agave attenuata 'Ray of Light'



Zamia furfuracea



Senecio mandraliscae



Rosmarinus officinalis 'Prostratus'



Dianella caerulea 'Casa Blue'



Trachelospermum 'tricolour'



Dichondra argentea

MIX 3 - DEEP SOIL AREA PLANTING



Liriope muscari 'Variegata'



Plectranthus argentatus 'Silver shield'



Viola hederacea



Anigozanthos Flavidus

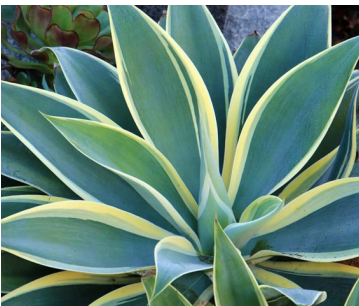


Ophiopogon japonicus

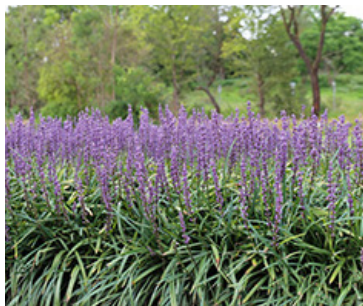


Poa labillardieri 'Eskdale'

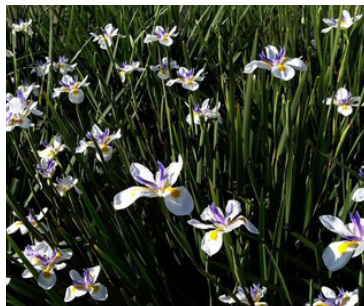
MIX 4 - RAISED PLANTERS



Agave attenuata 'Ray of Light'



Liriope 'Amethyst'



Dietes grandiflora



Viola hederacea



Festuca glauca



Ophiopogon japonicus



Blechnum 'silver lady'



Asplenium nidus

MIX 5 - SHADE TOLERANT

MIX 6 - RAISED PLANTER BOX



Acacia cognata 'Fettucini'



Anigozanthos 'Bush Diamond'

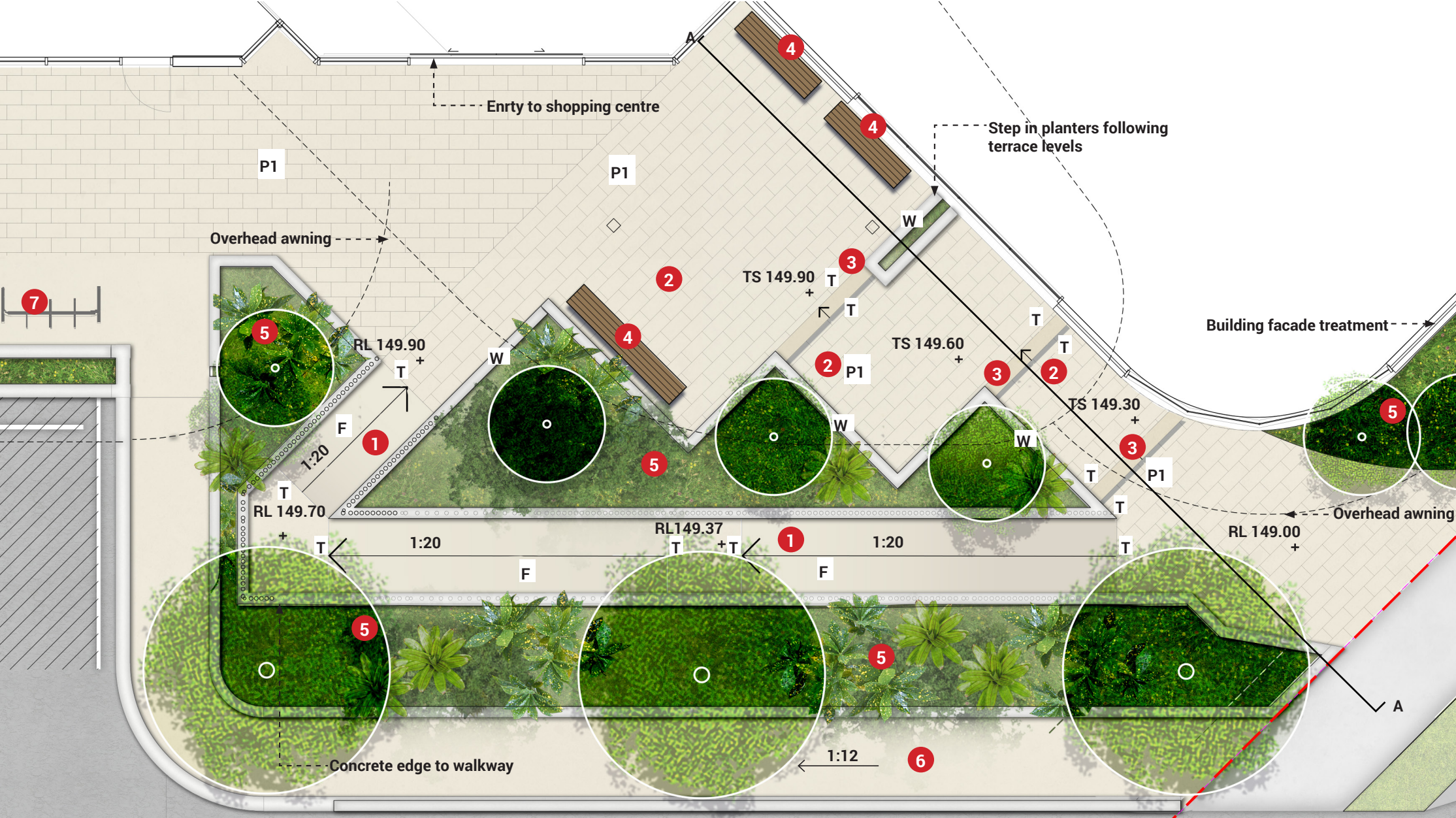


Dichondra argentea

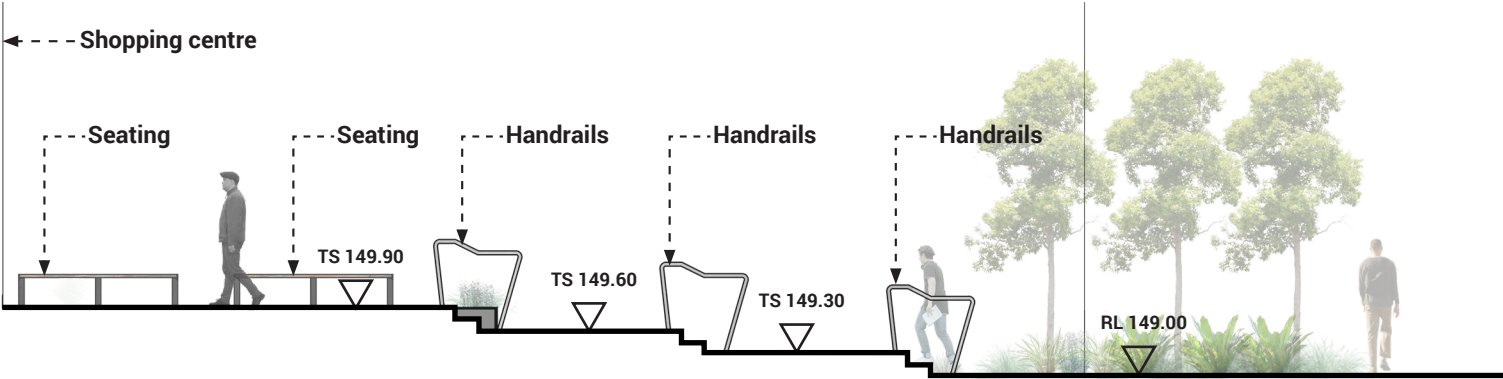


Peperomia clusiifolia 'Red Edge'

DETAIL LANDSCAPE PLAN

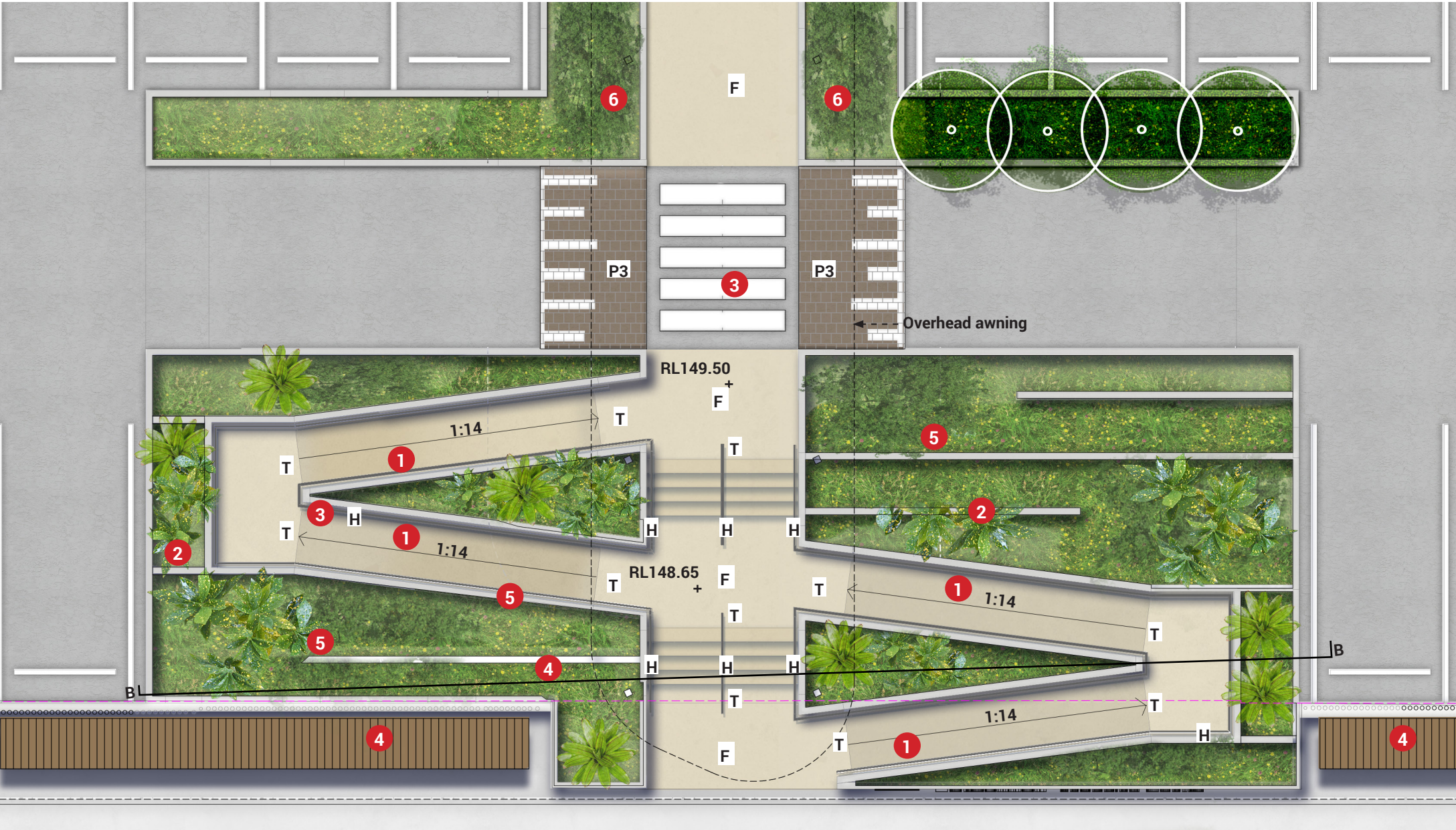


- LEGEND
- Site boundary
 - 1 Concrete ramp
 - 2 Paved platforms
 - 3 Stainless steel handrail (H)
 - 4 Timber seating (S)
 - 5 Low shrub and groundcover planting
 - 6 Ramp to bike parking
 - 7 Bike rack
 - Proposed trees
 - Paving Type 1
 - Concrete (F)

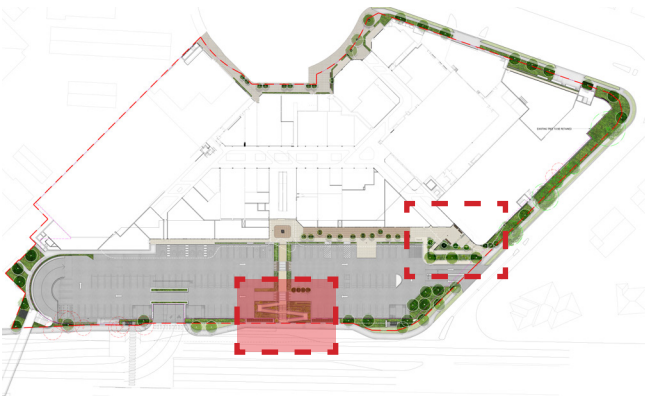


SECTION AA

DETAIL LANDSCAPE PLAN

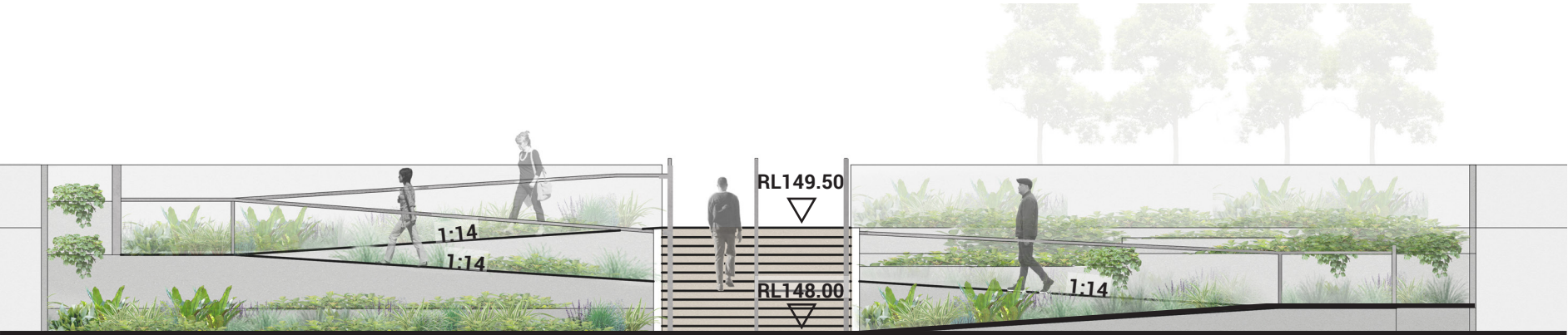


DETAIL PLAN LOCATION



LEGEND

- Site boundary
- 1 Concrete ramp (F)
- 2 Tiered entry planting
- 3 Pedestrian crossing
- 4 Bus Shelter
- 5 Entry planting with groundcover over terraced wall
- 6 Grass and low groundcover in car park planting
- Proposed trees
- Concrete (F)
- Cobblestone paving
- Car park asphalt



SECTION BB

HARDSCAPE PALETTE



Paving type 1(P1)
- Dimensioned sandstone paver



Paving type 2 (P2)
- Dark toned sandstone paver



Paving type 3 (P3)
- Cobblestone paver



Retaining wall (W)
- Sandstone clad wall



Concrere walkway (F)



Stainless steel Handrails (H)



Tactile indicators (T)



Timber Seating against planted backdrop (S)



Planter boxes with trees and shrubs (B)