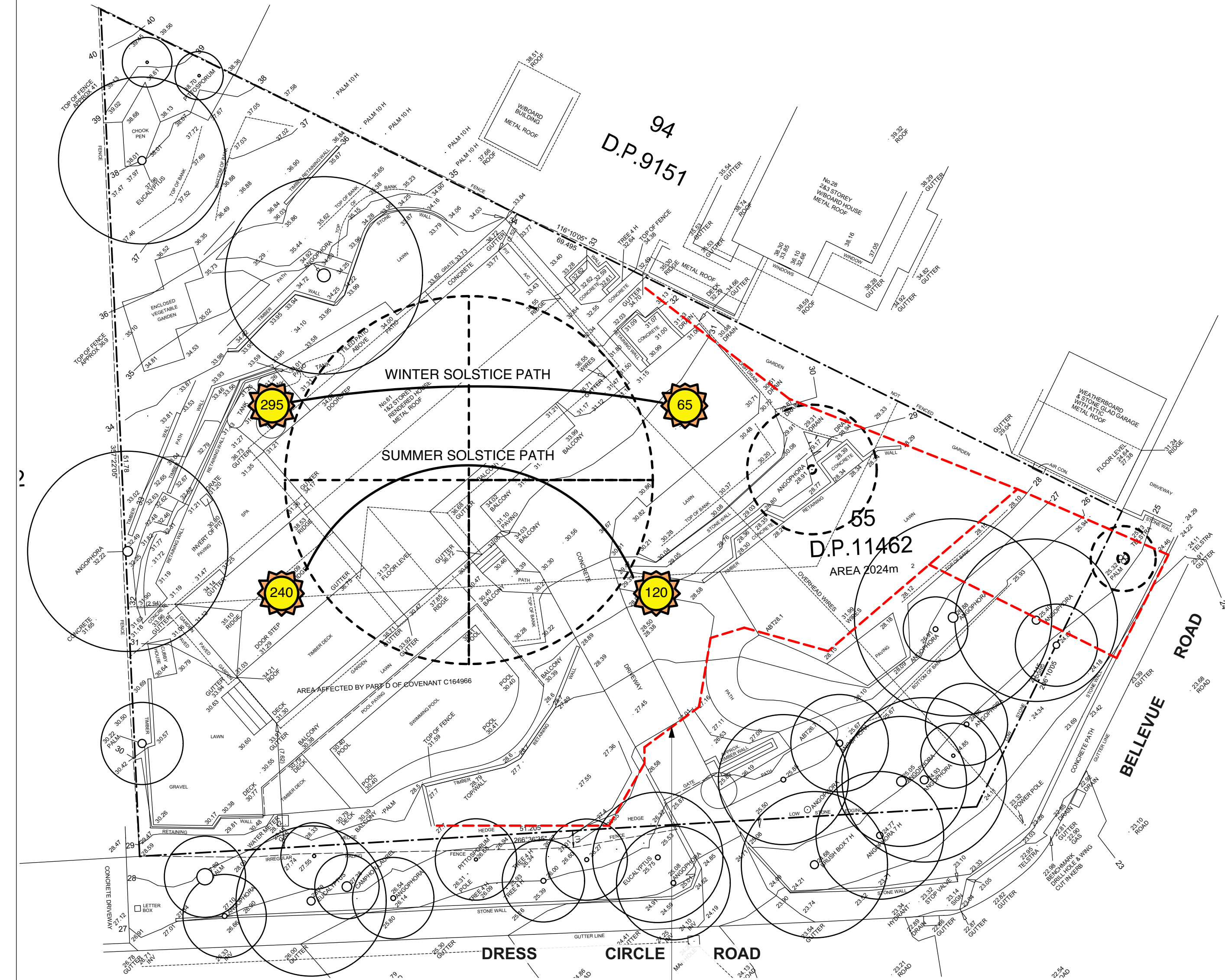
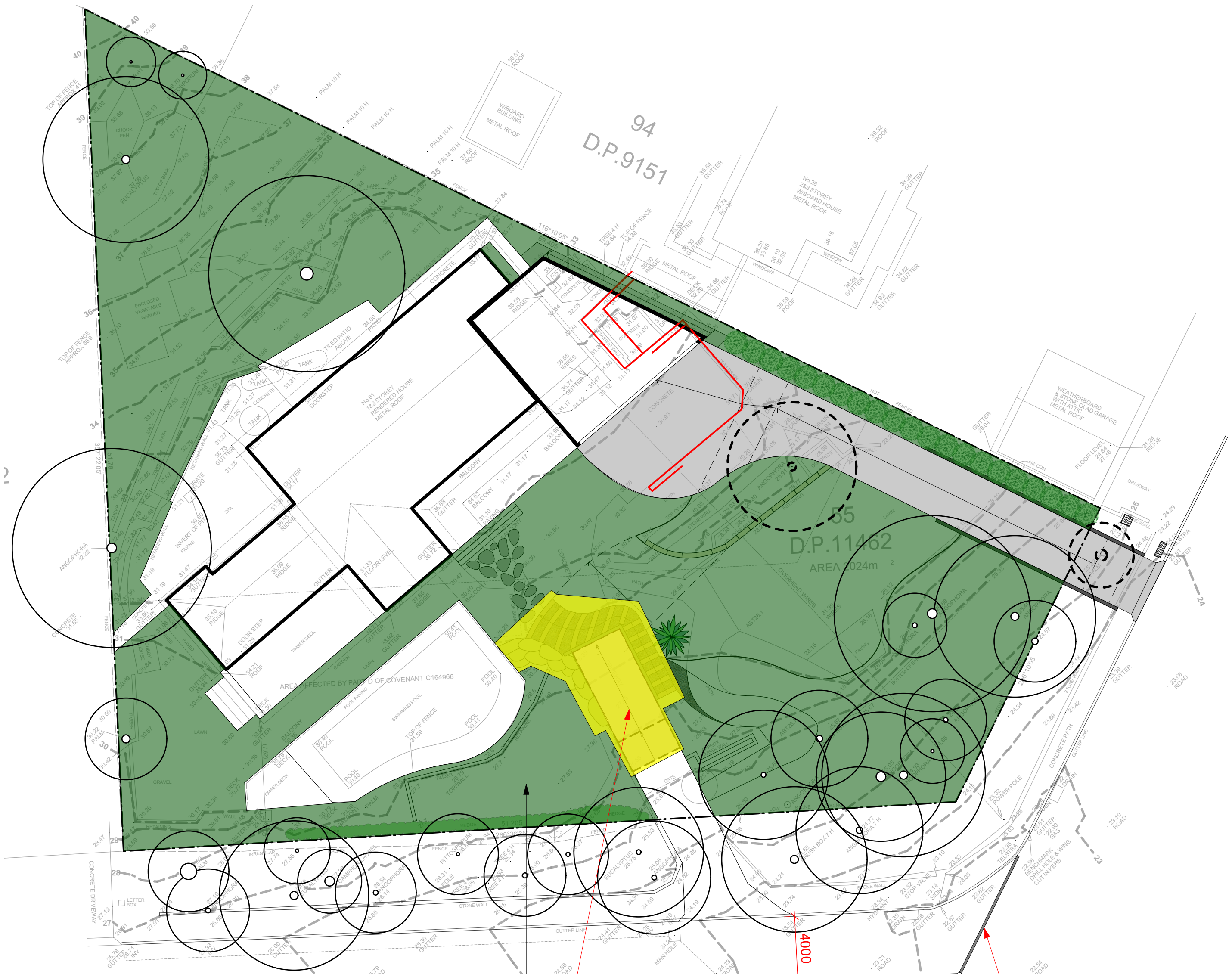


Legend

- MULCH AREA
- SOFT-FALL
- SAND
- ARTIFICIAL TURF
- TURF AREA
- TIMBER DECKING
- CONCRETE PAVING
- UNIT PAVING
- STAIRS
- PEBBLE
- GRAVEL
- COBBLESTONE
- TIMBER
- WATER
- MASONRY RETAINING WALL
- STONE RETAINING WALL
- TIMBER RETAINING WALL
- BOULDER RETAINING WALL
- SITE OR WORKS BOUNDARY
- PROPOSED LEVEL
- TOP OF WALL LEVEL
- MATERIAL NAME
- SURFACE FALL DIRECTION
- SURFACE DRAINS
- SURVEY (50% GREY LINES)
- EXISTING TREE TO RETAIN
- EXISTING TREE TO REMOVE
- EXISTING ROCK OUTCROP



Red dashed line indicates sedimentation control fence to be implemented throughout construction to appropriate standard



Green shaded area indicates compliant landscape area

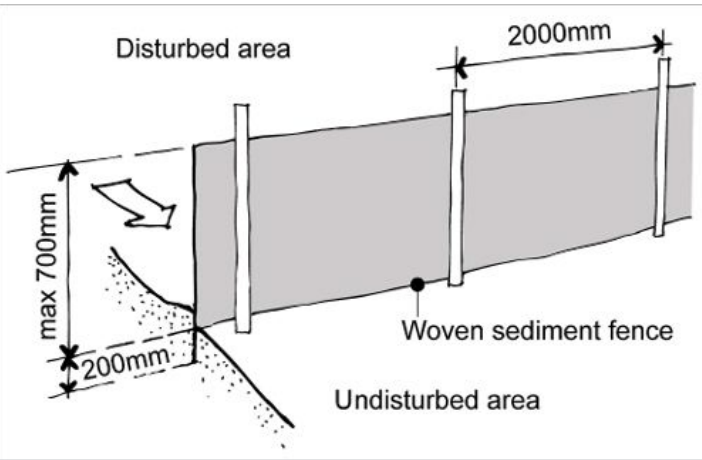
Yellow hatch defines area of 8.2 Modifications

Double black line defines double white lines on dress circle road

Solid black line defines stop line on dress circle road

Traffic island

AREA CALCULATION		
	AREA (m2)	PERCENTAGE
Site	2024,00	
Landscape total as per DCP	1236,26	61,08%
Area of outdoor recreation	94,00	4,64%
TOTAL AREA	1330,26	65,72%
DCP compliance	YES	YES



Sedimentation Control Fence  
Not to scale.  
Source: www.yourhome.gov.au

THIS PLAN IS TO BE READ IN CONJUNCTION WITH THE CONDITIONS OF DEVELOPMENT CONSENT  
REV2021/0016

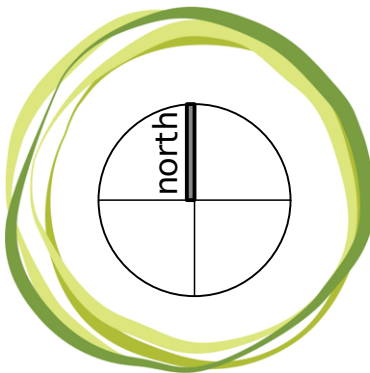
Notes in Red define 8.2 Modifications

Notes:  
>Do not scale off plan.  
>Contractors to check all measurements onsite before quoting or commencing work.  
>If abnormalities arise, contact the Landscape Architect.  
>This design is copyright and is not to be reproduced in anyway without written consent of Jamie King Landscape Architect

E	5/5/21	Issue E for 8.2
D	22/06/20	Issue D
C	13/05/20	Issue C
B	05/05/20	Issue B
A	20/03/20	DRAFT issue for review

ISSUE	DATE	REVISION	PROJECT #
PROJECT	61 Dress Circle Road, Avalon Beach		2065
CLIENT	Haidee Kegan		DWG #
DWG	Site Plan and Calculation		Sht-101
CHKD	JK	REVISION	

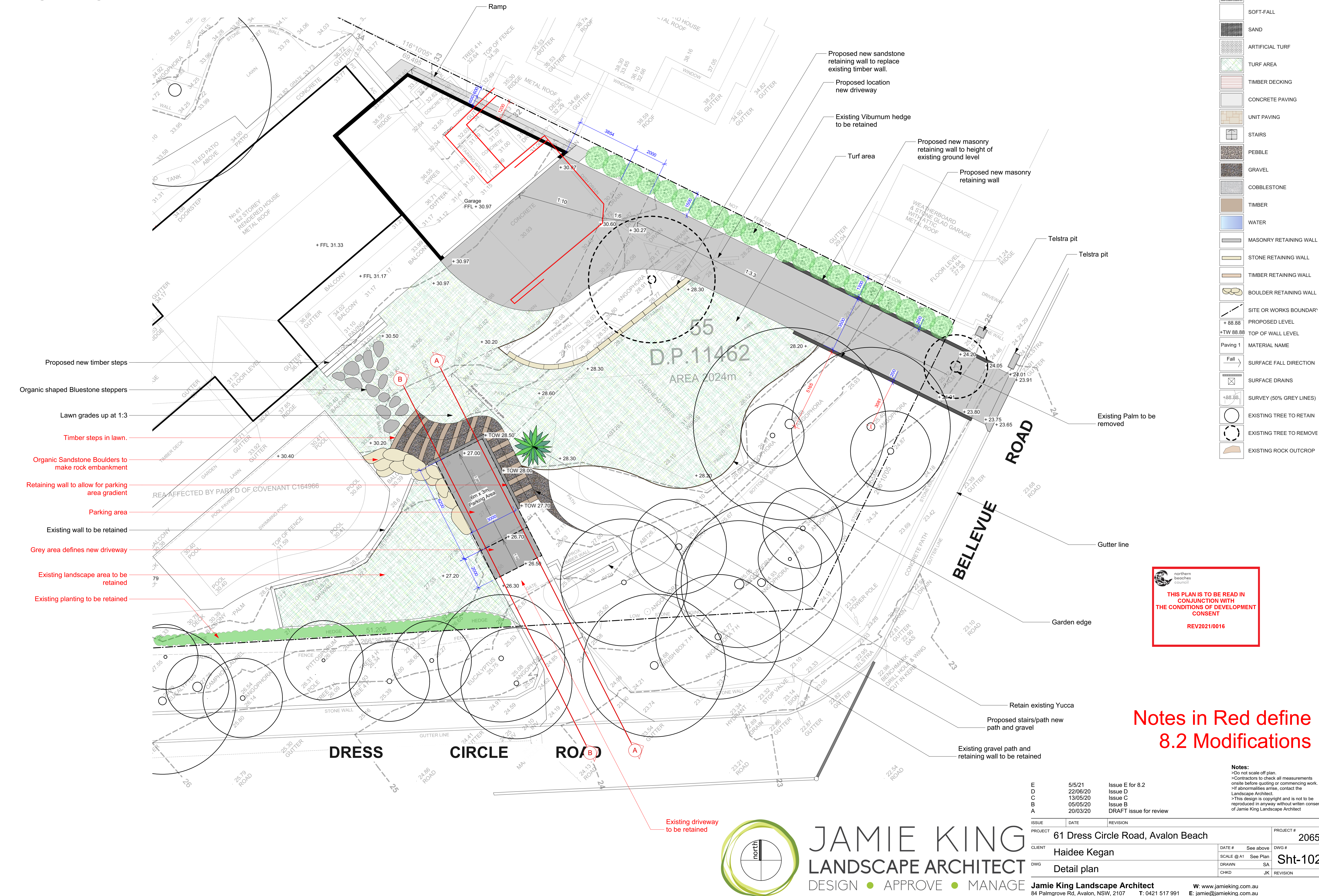
Jamie King Landscape Architect  
84 Palmgrove Rd, Avalon, NSW, 2107  
T: 0421 517 991  
W: www.jamieking.com.au  
E: jamie@jamieking.com.au



JAMIE KING  
LANDSCAPE ARCHITECT  
DESIGN • APPROVE • MANAGE



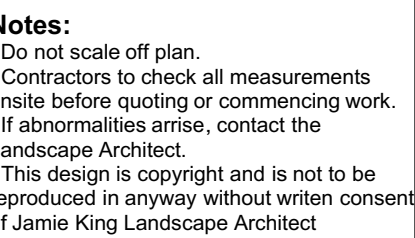
Detail plan  
1:100@A1 1:200@A3. Do not scale off plan







## Notes in Red define 8.2 Modifications



ISSUE	DATE	REVISION	
PROJECT	61 Dress Circle Road, Avalon Beach		PROJECT # 2065
CLIENT	Haidee Kegan		DATE # See above SCALE @ A1 See Plan DWG # Sht-103
DWG	Sections		DRAWN SA CHKD JK REVISION

**Jamie King Landscape Architect**  
84 Palmgrove Rd, Avalon, NSW, 2107 T: 0421 517 991  
W: [www.jamieking.com.au](http://www.jamieking.com.au)  
E: [jamie@jamieking.com.au](mailto:jamie@jamieking.com.au)



JAMIE KING  
LANDSCAPE ARCHITECT  
DESIGN • APPROVE • MANAGE