





LEGEND

-  TREES RETAINED
-  PRECINCT TREES OUTSIDE PROJECT SCOPE OF WORKS
-  BOUNDARY
-  BASEMENT FOOTPRINT REFER TO (DA14)

NOTES:

TREE PROTECTION ZONE (TPZ) REFER TO ARBORIST REPORT

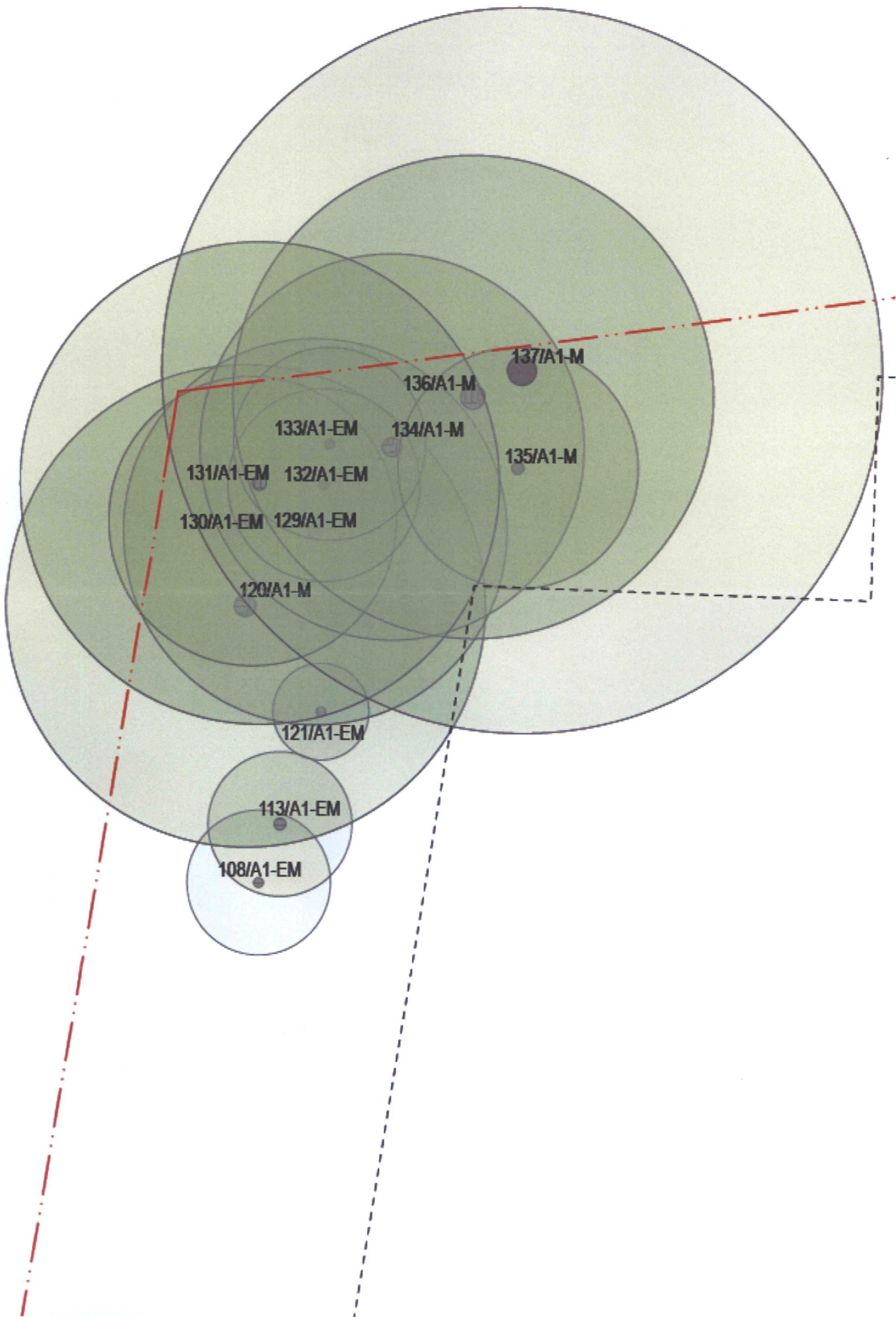
KEY TO ARBORIST REPORT 2014

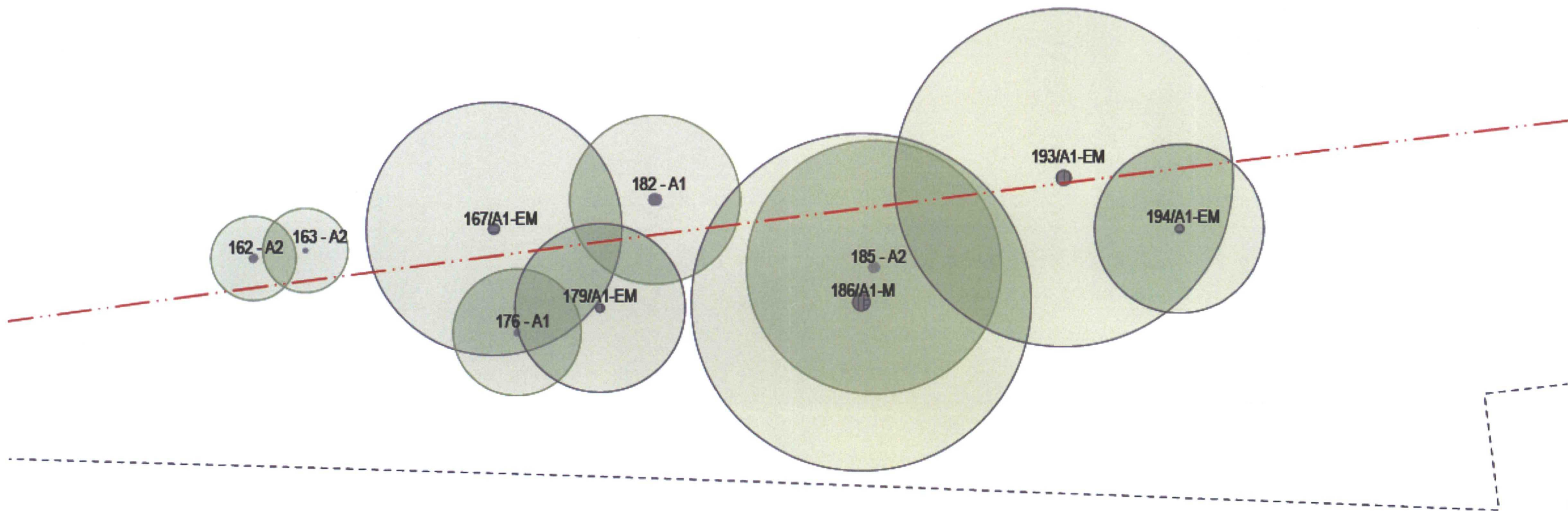
Trees on site e.g. 246/A1-EM
 246 SURVEY TREE NUMBERS
 A1 SAFE USEFUL LIFE EXPECTANCY (SULE)
 EM AGE CLASS: EM (EARLY MATURITY), (M) MATURE

PRECINCT TREES (ON ADJACENT SITES) e.g. PT/NA
 PT PRECINCT TREES
 NA NOT ASSESSED BY ARBORIST

NOTE: REFER TO ECO LOGICAL AUSTRALIA 2014, ARBORIST REPORT, CIVIC CENTRE CAR PARK, DEE WHY, PREPARED FOR WARRINGAH COUNCIL.

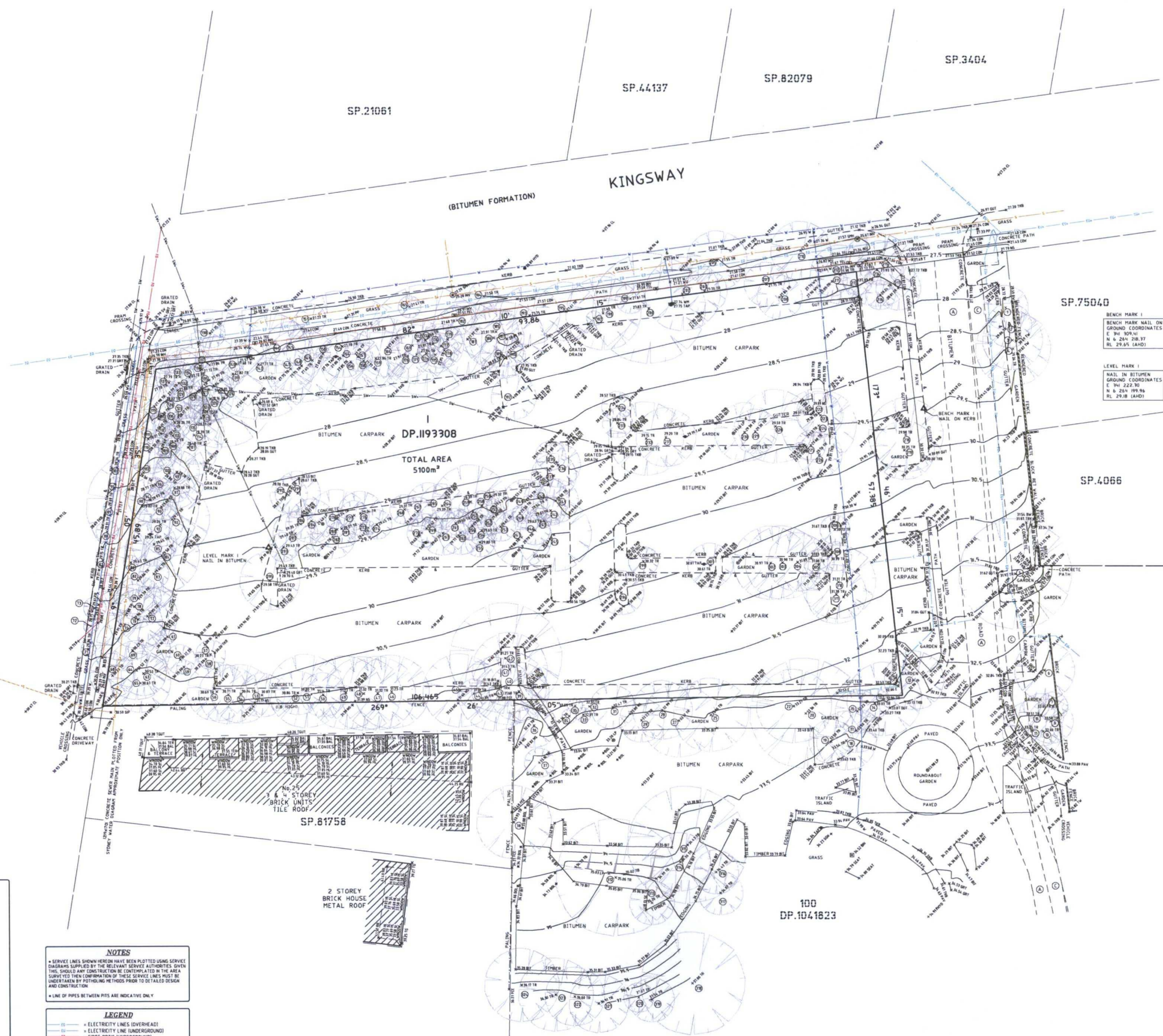
NOTE: REFER TO DA96 FOR TREE TOTALS







FISHER ROAD
(BITUMEN FORMATION)



NOTES

- SERVICE LINES SHOWN HEREON HAVE BEEN PLOTTED USING SERVICE DIAGRAMS SUPPLIED BY THE RELEVANT SERVICE AUTHORITIES. GIVEN THIS, SHOULD ANY CONSTRUCTION BE CONTINGENT IN THE AREA, SURVEYED THEN CORROBORATION OF THESE SERVICE LINES MUST BE UNDERTAKEN BY POTENTIAL METHOD PRIOR TO DETAILED DESIGN AND CONSTRUCTION.
- LINE OF PIPES BETWEEN PITS ARE INDICATIVE ONLY.

LEGEND

- = ELECTRICITY LINES (OVERHEAD)
- = ELECTRICITY LINES (UNDERGROUND)
- = FIBRE OPTIC (UNDERGROUND)
- = SEWER LINE (UNDERGROUND)
- = STORMWATER (UNDERGROUND)
- = TELSTRA LINES (UNDERGROUND)
- = WATER LINES (UNDERGROUND)
- = ELECTRICITY LINES PLOTTED FROM DIAL BEFORE YOU DO (UNDERGROUND)
- = SEWER LINES PLOTTED FROM DIAL BEFORE YOU DO (UNDERGROUND)
- = STORMWATER LINES PLOTTED FROM DIAL BEFORE YOU DO (UNDERGROUND)

⊙ PROPOSED RIGHT OF WAY 4.0 M (DP.1078755)

⊙ PROPOSED EASEMENT FOR ELECTRICITY PURPOSES 2.0 M AND VARIABLE (DP.1078755)



MARK	M.G.A. COORDINATES - ZONE 56	AND LEVEL
EASTING	NORTHING	CLASS ORDER
PM 2851	741995.188	6264255.548
		B L3 26.689 L.C L3

TREE TABLE			
No.	THANE	HEIGHT	SPREAD
1	0.25	15	6
2	0.25	15	6
3	0.25	15	6
4	0.25	15	6
5	0.25	15	6
6	0.25	15	6
7	0.25	15	6
8	0.25	15	6
9	0.25	15	6
10	0.25	15	6
11	0.25	15	6
12	0.25	15	6
13	0.25	15	6
14	0.25	15	6
15	0.25	15	6
16	0.25	15	6
17	0.25	15	6
18	0.25	15	6
19	0.25	15	6
20	0.25	15	6
21	0.25	15	6
22	0.25	15	6
23	0.25	15	6
24	0.25	15	6
25	0.25	15	6
26	0.25	15	6
27	0.25	15	6
28	0.25	15	6
29	0.25	15	6
30	0.25	15	6
31	0.25	15	6
32	0.25	15	6
33	0.25	15	6
34	0.25	15	6
35	0.25	15	6
36	0.25	15	6
37	0.25	15	6
38	0.25	15	6
39	0.25	15	6
40	0.25	15	6
41	0.25	15	6
42	0.25	15	6
43	0.25	15	6
44	0.25	15	6
45	0.25	15	6
46	0.25	15	6
47	0.25	15	6
48	0.25	15	6
49	0.25	15	6
50	0.25	15	6
51	0.25	15	6
52	0.25	15	6
53	0.25	15	6
54	0.25	15	6
55	0.25	15	6
56	0.25	15	6
57	0.25	15	6
58	0.25	15	6
59	0.25	15	6
60	0.25	15	6
61	0.25	15	6
62	0.25	15	6
63	0.25	15	6
64	0.25	15	6
65	0.25	15	6
66	0.25	15	6
67	0.25	15	6
68	0.25	15	6
69	0.25	15	6
70	0.25	15	6
71	0.25	15	6
72	0.25	15	6
73	0.25	15	6
74	0.25	15	6
75	0.25	15	6
76	0.25	15	6
77	0.25	15	6
78	0.25	15	6
79	0.25	15	6
80	0.25	15	6
81	0.25	15	6
82	0.25	15	6
83	0.25	15	6
84	0.25	15	6
85	0.25	15	6
86	0.25	15	6
87	0.25	15	6
88	0.25	15	6
89	0.25	15	6
90	0.25	15	6
91	0.25	15	6
92	0.25	15	6
93	0.25	15	6
94	0.25	15	6
95	0.25	15	6
96	0.25	15	6
97	0.25	15	6
98	0.25	15	6
99	0.25	15	6
100	0.25	15	6

TREE TABLE			
No.	THANE	HEIGHT	SPREAD
101	0.25	15	6
102	0.25	15	6
103	0.25	15	6
104	0.25	15	6
105	0.25	15	6
106	0.25	15	6
107	0.25	15	6
108	0.25	15	6
109	0.25	15	6
110	0.25	15	6
111	0.25	15	6
112	0.25	15	6
113	0.25	15	6
114	0.25	15	6
115	0.25	15	6
116	0.25	15	6
117	0.25	15	6
118	0.25	15	6
119	0.25	15	6
120	0.25	15	6
121	0.25	15	6
122	0.25	15	6
123	0.25	15	6
124	0.25	15	6
125	0.25	15	6
126	0.25	15	6
127	0.25	15	6
128	0.25	15	6
129	0.25	15	6
130	0.25	15	6
131	0.25	15	6
132	0.25	15	6
133	0.25	15	6
134	0.25	15	6
135	0.25	15	6
136	0.25	15	6
137	0.25	15	6
138	0.25	15	6
139	0.25	15	6
140	0.25	15	6
141	0.25	15	6
142	0.25	15	6
143	0.25	15	6
144	0.25	15	6
145	0.25	15	6
146	0.25	15	6
147	0.25	15	6
148	0.25	15	6
149	0.25	15	6
150	0.25	15	6
151	0.25	15	6
152	0.25	15	6
153	0.25	15	6
154	0.25	15	6
155	0.25	15	6
156	0.25	15	6
157	0.25	15	6
158	0.25	15	6
159	0.25	15	6
160	0.25	15	6
161	0.25	15	6
162	0.25	15	6
163	0.25	15	6
164	0.25	15	6
165	0.25	15	6
166	0.25	15	6
167	0.25	15	6
168	0.25	15	6
169	0.25	15	6
170	0.25	15	6
171	0.25	15	6
172	0.25	15	6
173	0.25	15	6
174	0.25	15	6
175	0.25	15	6
176	0.25	15	6
177	0.25	15	6
178	0.25	15	6
179	0.25	15	6
180	0.25	15	6
181	0.25	15	6
182	0.25	15	6
183	0.25	15	6
184	0.25	15	6
185	0.25	15	6
186	0.25	15	6
187	0.25	15	6
188	0.25	15	6
189	0.25	15	6
190	0.25	15	6
191	0.25	15	6
192	0.25	15	6
193	0.25	15	6
194	0.25	15	6
195	0.25	15	6
196	0.25	15	6
197	0.25	15	6
198	0.25	15	6
199	0.25	15	6
200	0.25	15	6

Notes:

- BOUNDARIES HAVE BEEN DEFINED - PLEASE REFER TO PLAN OF CONSTRUCTION.
- IF CONTINUATION ON OR NEAR BOUNDARIES IS REQUIRED IT IS RECOMMENDED THAT THE BOUNDARIES OF THE LAND BE MARKED.
- THIS PLAN HAS BEEN PREPARED FOR THE EXCLUSIVE USE OF WARRINGAH COUNCIL.
- RELATIONSHIP OF IMPROVEMENTS TO BOUNDARIES IS DIAGRAMMATIC ONLY. WHERE OFFSETS ARE CRITICAL, THEY SHOULD BE CONFIRMED BY FURTHER SURVEY.
- EXCEPT WHERE SHOWN BY DIMENSION LOCATION OF DETAIL WITH RESPECT TO BOUNDARIES IS INDICATIVE ONLY.
- ONLY VISIBLE SERVICES HAVE BEEN LOCATED. UNDERGROUND SERVICES HAVE NOT BEEN LOCATED. IF YOU DO SERVICES (UP TO 1000 SHOULD BE USED) AND A FULL UTILITY INVESTIGATION, INCLUDING A UTILITY LOCATION SURVEY, SHOULD BE UNDERTAKEN BEFORE CARBONING OUT ANY CONSTRUCTION ACTIVITY IN OR NEAR THE SURVEYED AREA.
- SEWER MAIN PLOTTED FROM SYDNEY WATER SEWER DIAGRAM. LOCATION SHOULD BE MARKED ON SITE IF CRITICAL.
- CRITICAL SPOT LEVELS SHOULD BE CONFIRMED WITH SURVEYOR.
- THIS PLAN IS ONLY TO BE USED FOR THE PURPOSE OF DESIGNING NEW CONSTRUCTIONS.
- CONTOURS SHOWN DEPICT THE TOPOGRAPHY. THEY DO NOT REPRESENT THE EXACT LEVEL AT ANY PARTICULAR POINT. ONLY SPOT LEVELS SHOULD BE USED FOR CALCULATIONS OF QUANTITIES WITH CALIBRATION.
- DO NOT SCALE OFF THIS PLAN / FIGURED DIMENSIONS TO BE TAKEN IN PREFERENCE TO SCALED READINGS.
- IF ACCURATE TRUE NORTH IS REQUIRED A FURTHER SURVEY WOULD BE NECESSARY.
- COPYRIGHT © C.M.S. SURVEYORS 2001.
- NO PART OF THIS SURVEY MAY BE REPRODUCED, STORED IN A RETRIEVAL SYSTEM OR TRANSMITTED IN ANY FORM WITHOUT THE WRITTEN PERMISSION OF THE COPYRIGHT OWNER EXCEPT AS PERMITTED BY THE COPYRIGHT ACT 1968.
- ANY PRINTED OR DOWNLOADED, ELECTRONIC STORAGE, DISPLAY, PHOTOCOPY OR REPRODUCTION OF THIS SURVEY SHOULD CONTAIN NO ALTERATION OR ADDITION TO THE ORIGINAL SURVEY.
- THIS NOTICE MUST NOT BE ERASED.

6	TITLE DETAILS AMENDED TO LOT 1 IN DP.193308	28/05/14
5	TREES UPDATED	7/02/14
4	REVISION OF CO-ORDINATES ADDED	16/12/13
3	REMOVED AND AMENDED DISCLAIMERS	16/12/13
2	UNDERGROUND SERVICES LOCATED & EXTRA CARPARK DETAIL ADDED	5/12/13
1	FIRST ISSUE	17/10/13

HORIZONTAL DATUM:	VERTICAL DATUM:
CO-ORDINATE SYSTEM: MGA	DATUM: AUSTRALIAN HEIGHT DATUM (AHD)
MARKS ADOPTED: DP.193308 & PH.2851 FOR CO-ORDINATES (ORDER L3)	B.M. ADOPTED: PH.2851
PLUG IN METAL BOX IN GRASS VERGE NORTHERN SIDE OF KINGSWAY	R.L. 26.689 (ORDER L3)
	SOURCE: S.C.I.M.S. (28/09/11)
L.G.A. WARRINGAH	

CLIENT:	PLAN
WARRINGAH COUNCIL	SHOWING DETAIL & LEVELS
CIVIC CENTRE, 725 PITTWATER ROAD	OVER LOT 1 IN DP.193308 & PART LOT 100 IN DP.1041823
DEE WHY NSW 2009	BEING "DEE WHY CARPARK" No.36-48 KINGSWAY
	DEE WHY NSW 2009

PLAN	SCALE	DATE OF SURVEY
OVER LOT 1 IN DP.193308 & PART LOT 100 IN DP.1041823	1:200	28/09/14 & 27/10/14
BEING "DEE WHY CARPARK" No.36-48 KINGSWAY		
DEE WHY NSW 2009		

C.M.S. Surveyors Pty Limited	SURVEYED	DRAWN	CHECKED	APPROVED
ACN: 096 240 201	LJ/DJR	CJR	CJR	MS/GS
PO Box 463 Dee Why NSW 2099				
1/32 Campbell Avenue, Dee Why NSW 2099				
Telephone: (02) 9971 4802 Facsimile: (02) 9971 4822				
E-mail: info@cmsurveyors.com.au				

865detail	SHEET	15506
865detail.dwg	1 of 1	6