

GENERAL NOTES
1. CONTRACTORS MUST VERIFY ALL DIMENSIONS ON SITE PRIOR TO THE COMMENCEMENT OF ANY WORK OR THE PREPARATION OF SHOP DRAWINGS.
2. FIGURED DIMENSIONS TO BE USED IN PREFERENCE TO SCALED DIMENSIONS.
USE OF THESE DRAWINGS
The design and details shown on these drawings are applicable to this project only and may not be reproduced in whole or in part or be used for any other project or purpose without the written permission of Woodhouse & Danks Pty. Ltd. with whom copyright resides.

No. DATE REVISION OR ISSUE

DWN. CHK. No. DATE REVISION OR ISSUE

DWN. CHK. No. DATE REVISION OR ISSUE

DWN. CHK.

06.09.21 ISSUE

Proposed Alteration
69 Evans Street, Freshwater
NSW

SITE DEVELOPMENT PLAN

'Nominated Architect Stephen Fayle'



WOODHOUSE & DANKS
ARCHITECTS

Suite 207 Level 2, 20 Dale Street, Brookvale NSW 2100
T: (02) 9939 8810
E: admin@woodhousedanks.com.au

SCALE
1:200 M
DATE
SEPT 2021
CAD FILE
E:\69 Evans Street, Freshwater\Drawings\2021.08\09

JOB No.

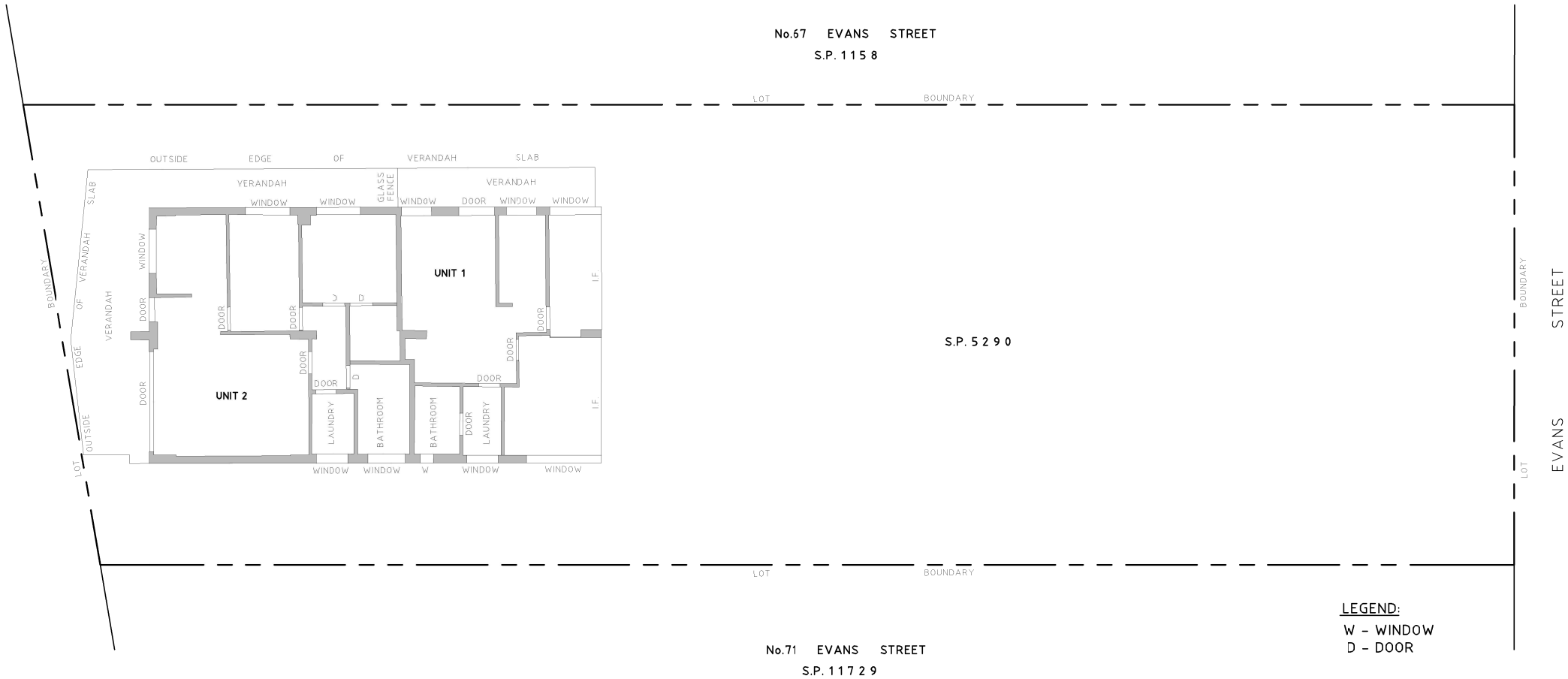
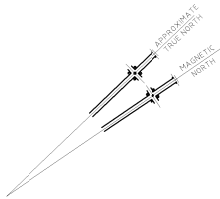
20005

DWG. No.

REV

CD 02 -

DRAWN
rjo



 northern
beaches
council

**THIS PLAN IS TO BE READ IN
CONJUNCTION WITH
THE CONDITIONS OF DEVELOPMENT
CONSENT**

DA2021/2588



GENERAL NOTES
1. CONTRACTORS MUST VERIFY ALL DIMENSIONS ON SITE PRIOR TO THE COMMENCEMENT OF ANY WORK OR THE PREPARATION OF SHOP DRAWINGS.
2. FIGURED DIMENSIONS TO BE USED IN PREFERENCE TO SCALED DIMENSIONS.
USE OF THESE DRAWINGS
The design and details shown on these drawings are applicable to this project only and may not be reproduced in whole or in part or be used for any other project or purpose without the written permission of Woodhouse & Danks Pty. Ltd. with whom copyright resides.

No. DATE REVISION OR ISSUE

DWN. CHK. No. DATE REVISION OR ISSUE

DWN. CHK. No. DATE REVISION OR ISSUE

DWN. CHK.

06.09.21 ISSUE

Proposed Alteration
69 Evans Street , Freshwater
NSW

LEVEL 1

‘Nominated Architect Stephen Fayle’



WOODHOUSE & DANKS PTY LTD
ARCHITECTS

ABN: 26 064 690 106
ARN: 3274

Suite 207 Level 2, 20 Dale Street, Brookvale NSW 2100

T: (02) 9939 8810
E: admin@woodhousedanks.com.au

SCALE
1:200 M

DATE
SEPT 2021

E:\69 Evans Street, Freshwater\Drawings\2021.08.09

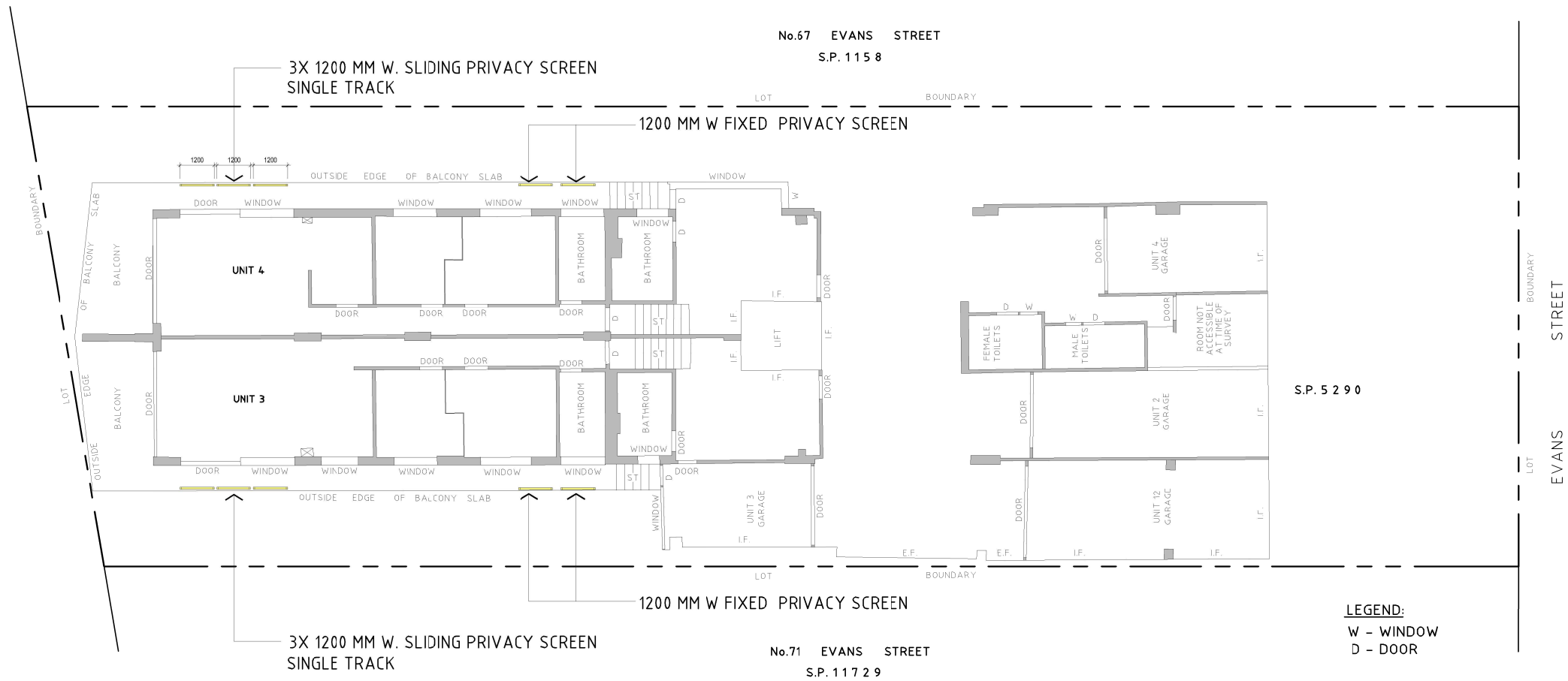
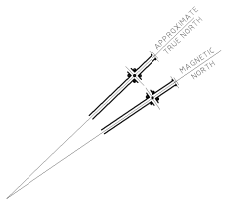
JOB No.

20005

DWG. No. REV

CD 03 -

DRAWN
rjo



**THIS PLAN IS TO BE READ IN
CONJUNCTION WITH
THE CONDITIONS OF DEVELOPMENT
CONSENT**

DA2021/2588

0 5 10 15 20 25 30 35 40 45 50 55 60 65 70 75 80 85 90 95 100

GENERAL NOTES

1. CONTRACTORS MUST VERIFY ALL DIMENSIONS ON SITE PRIOR TO THE COMMENCEMENT OF ANY WORK OR THE PREPARATION OF SHOP DRAWINGS.

2. FIGURED DIMENSIONS TO BE USED IN PREFERENCE TO SCALED DIMENSIONS.

USE OF THESE DRAWINGS

The design and details shown on these drawings are applicable to this project only and may not be reproduced in whole or in part or be used for any other project or purpose without the written permission of Woodhouse & Danks Pty. Ltd. with whom copyright resides.

No. DATE REVISION OR ISSUE

DWN. CHK. No. DATE REVISION OR ISSUE

06.09.21 ISSUE

DWN. CHK.

Proposed Alteration
69 Evans Street, Freshwater
NSW

LEVEL 2

'Nominated Architect Stephen Fayle'

WOODHOUSE & DANKS ARCHITECTS
Suite 207 Level 2, 20 Dale Street, Brookvale NSW 2100
E: admin@woodhousedanks.com.au
T: (02) 9939 8810
CAD FILE: E:\69 Evans Street, Freshwater\Drawings\2021.08.09

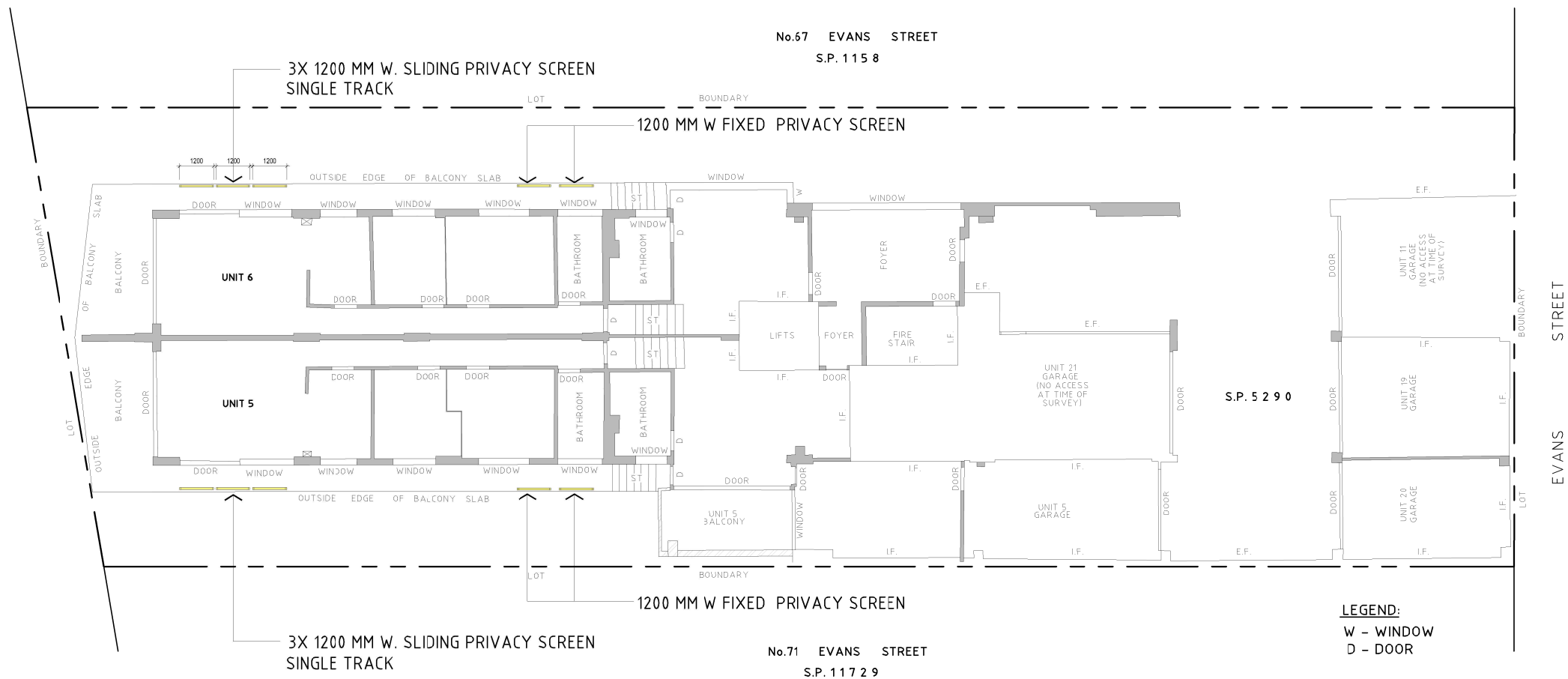
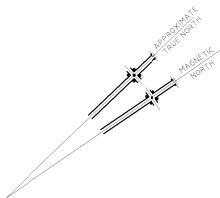
20005

CD 04 -

SCALE: 1:200 M

DATE: SEPT 2021

DRAWN: rjo



 **northern
beaches
council**

**THIS PLAN IS TO BE READ IN
CONJUNCTION WITH
THE CONDITIONS OF DEVELOPMENT
CONSENT**

DA2021/2588



GENERAL NOTES
1. CONTRACTORS MUST VERIFY ALL DIMENSIONS ON SITE PRIOR TO THE COMMENCEMENT OF ANY WORK OR THE PREPARATION OF SHOP DRAWINGS.
2. FIGURED DIMENSIONS TO BE USED IN PREFERENCE TO SCALED DIMENSIONS.
USE OF THESE DRAWINGS
The design and details shown on these drawings are applicable to this project only and may not be reproduced in whole or in part or be used for any other project or purpose without the written permission of Woodhouse & Danks Pty. Ltd. with whom copyright resides.

No. DATE REVISION OR ISSUE

DWN. CHK. No. DATE REVISION OR ISSUE

DWN. CHK. No. DATE REVISION OR ISSUE

DWN. CHK.

06.09.21 ISSUE

Proposed Alteration
69 Evans Street, Freshwater
NSW

LEVEL 3

‘Nominated Architect Stephen Fayle’



WOODHOUSE & DANKS PTY LTD
ARCHITECTS
Stephen R Fayle
ABN 26 064 690 106
ARN 3274

Suite 207 Level 2, 20 Dale Street, Brookvale NSW 2100
T: (02) 9939 8810
E: admin@woodhousedanks.com.au

SCALE
1:200 M

DATE
SEPT 2021

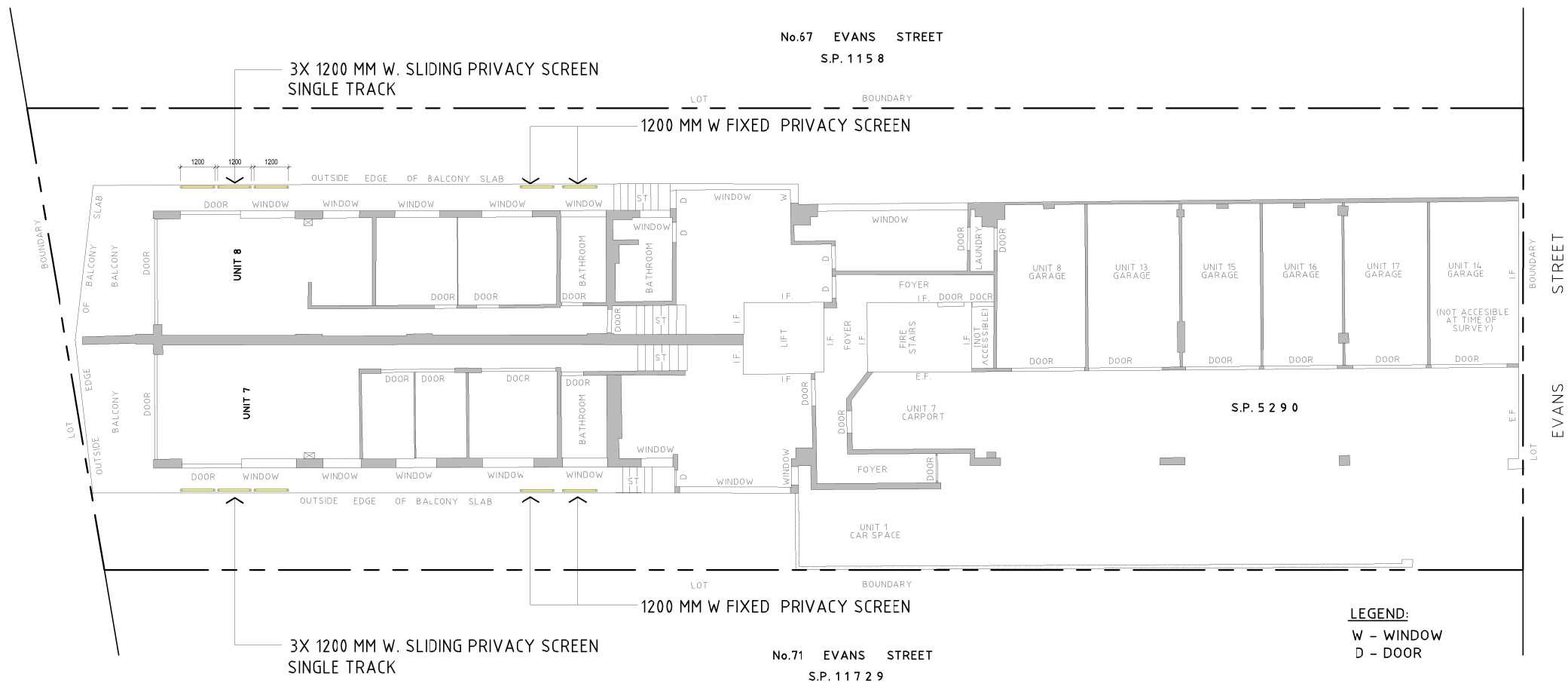
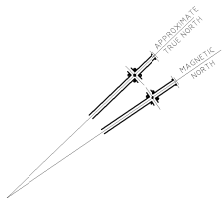
E: 69 Evans Street, Freshwater Drawings 2021.08.09

JOB No.
20005

DWG. No. REV

CD 05 -

DRAWN
rjo



 **northern
beaches
council**

**THIS PLAN IS TO BE READ IN
CONJUNCTION WITH
THE CONDITIONS OF DEVELOPMENT
CONSENT**

DA2021/2588



GENERAL NOTES
1. CONTRACTORS MUST VERIFY ALL DIMENSIONS ON SITE PRIOR TO THE COMMENCEMENT OF ANY WORK OR THE PREPARATION OF SHOP DRAWINGS.
2. FIGURED DIMENSIONS TO BE USED IN PREFERENCE TO SCALED DIMENSIONS.
USE OF THESE DRAWINGS
The design and details shown on these drawings are applicable to this project only and may not be reproduced in whole or in part or be used for any other project or purpose without the written permission of Woodhouse & Danks Pty. Ltd. with whom copyright resides.

No. DATE REVISION OR ISSUE

DWN. CHK. No. DATE REVISION OR ISSUE

DWN. CHK. No. DATE REVISION OR ISSUE

DWN. CHK.

06.09.21 ISSUE

Proposed Alteration
69 Evans Street , Freshwater
NSW

LEVEL 4

'Nominated Architect Stephen Fayle'



WOODHOUSE & DANKS PTY LTD
ARCHITECTS
Stephen R Fayle
ABN: 26 064 690 106
ARN: 3274

Suite 207 Level 2, 20 Dale Street, Brookvale NSW 2100
T: (02) 9939 8810
E: admin@woodhousedanks.com.au

SCALE
1:200 M

DATE
SEPT 2021

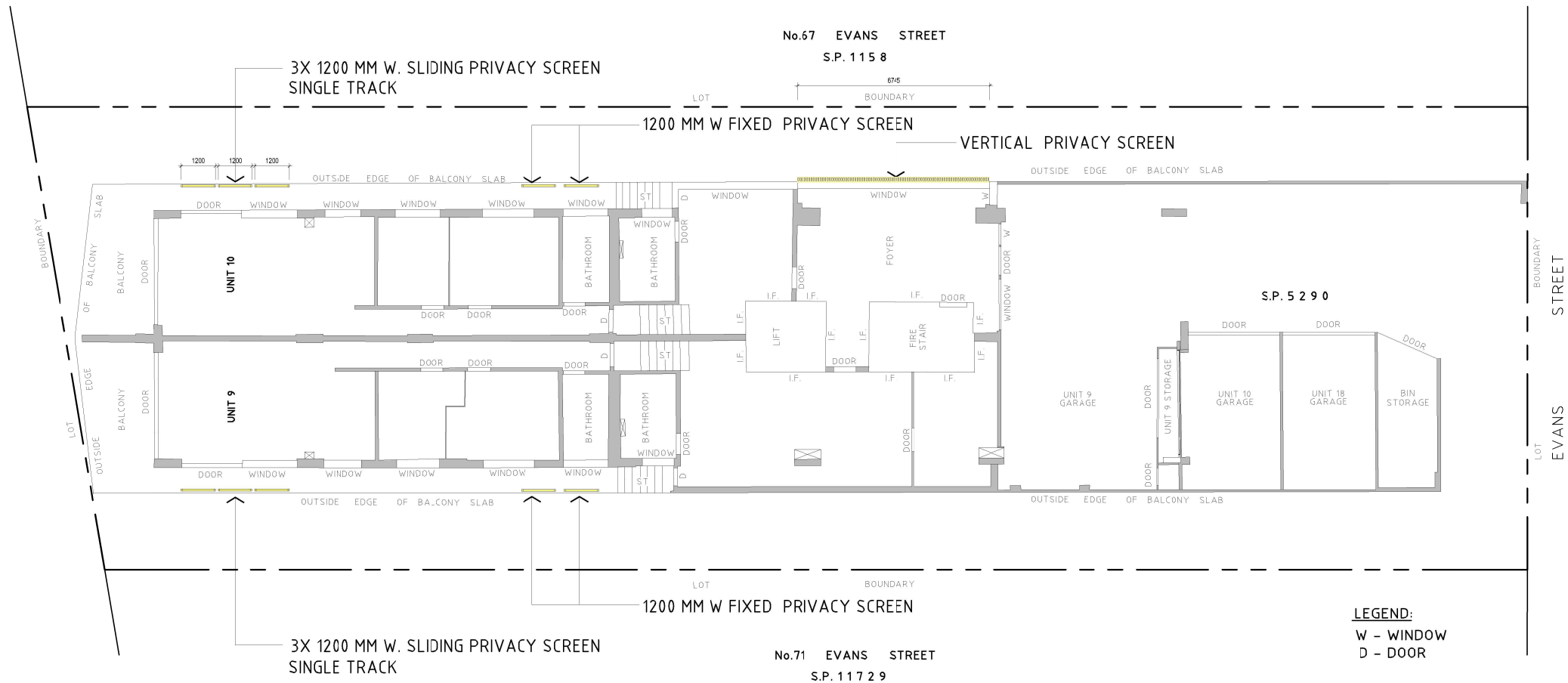
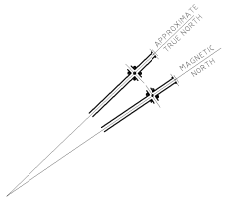
E: 69 Evans Street, Freshwater Drawings/2021.08.09

JOB No.
20005

DWG. No. REV

CD 06 -

DRAWN
rjo



 **northern
beaches
council**

**THIS PLAN IS TO BE READ IN
CONJUNCTION WITH
THE CONDITIONS OF DEVELOPMENT
CONSENT**

DA2021/2588



GENERAL NOTES
1. CONTRACTORS MUST VERIFY ALL DIMENSIONS ON SITE PRIOR TO THE COMMENCEMENT OF ANY WORK OR THE PREPARATION OF SHOP DRAWINGS.
2. FIGURED DIMENSIONS TO BE USED IN PREFERENCE TO SCALED DIMENSIONS.
USE OF THESE DRAWINGS
The design and details shown on these drawings are applicable to this project only and may not be reproduced in whole or in part or be used for any other project or purpose without the written permission of Woodhouse & Danks Pty. Ltd. with whom copyright resides.

No. DATE REVISION OR ISSUE

DWN. CHK. No. DATE REVISION OR ISSUE

DWN. CHK. No. DATE REVISION OR ISSUE

DWN. CHK.

"a" 14.12.21 "a" Vertical privacy screen over foyer
06.09.21 ISSUE

Proposed Alteration
69 Evans Street , Freshwater
NSW

LEVEL 5

'Nominated Architect Stephen Faile'



WOODHOUSE & DANKS PTY LTD
ARCHITECTS
Suite 207 Level 2, 20 Dale Street, Brookvale NSW 2100
E: admin@woodhousedanks.com.au

ABN: 26 064 690 106
ARN: 3274

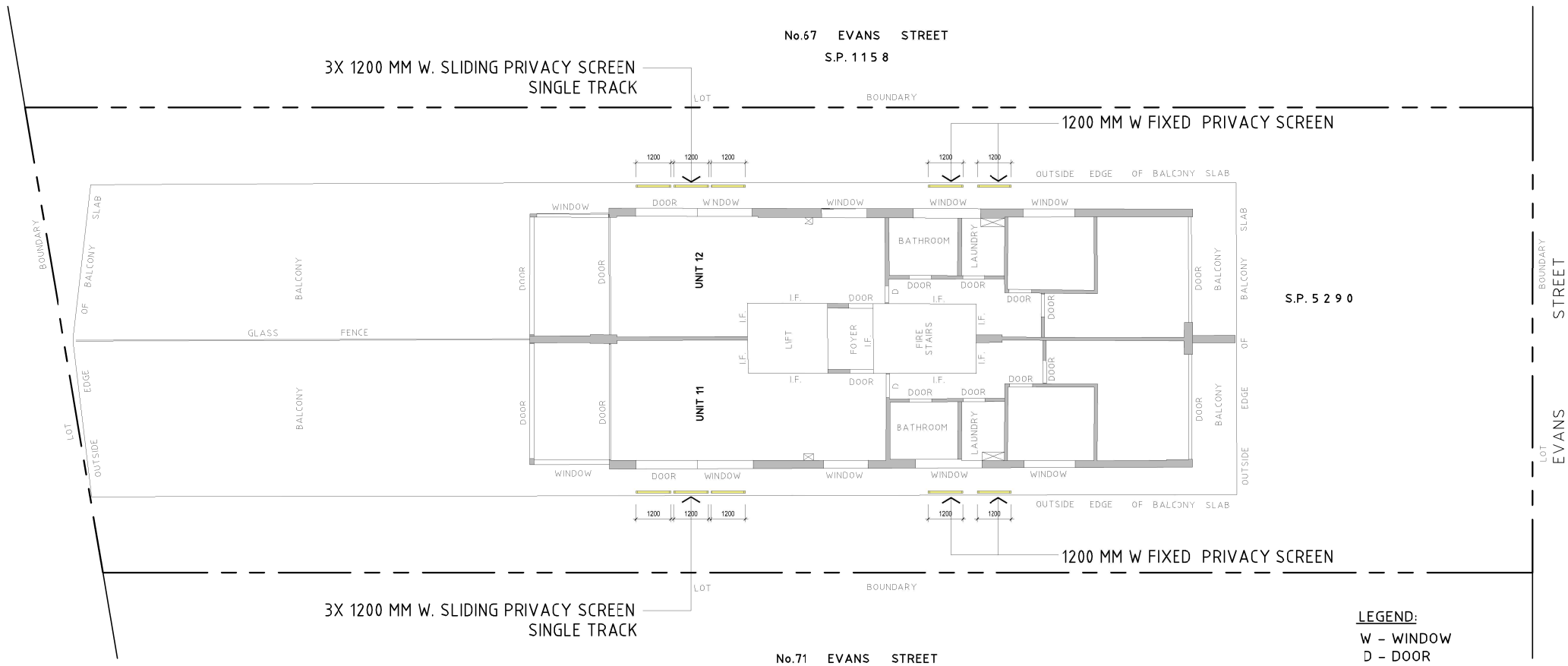
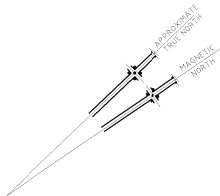
JOB No.
20005

DATE DEC 2021

SCALE
1:200 M

T: (02) 9939 8810
DRAWN rjo

CD 07 a



 northern
beaches
council

**THIS PLAN IS TO BE READ IN
CONJUNCTION WITH
THE CONDITIONS OF DEVELOPMENT
CONSENT**

DA2021/2588



GENERAL NOTES
1. CONTRACTORS MUST VERIFY ALL DIMENSIONS ON SITE PRIOR TO THE COMMENCEMENT OF ANY WORK OR THE PREPARATION OF SHOP DRAWINGS.
2. FIGURED DIMENSIONS TO BE USED IN PREFERENCE TO SCALED DIMENSIONS.
USE OF THESE DRAWINGS
The design and details shown on these drawings are applicable to this project only and may not be reproduced in whole or in part or be used for any other project or purpose without the written permission of Woodhouse & Danks Pty. Ltd. with whom copyright resides.

No. DATE REVISION OR ISSUE

DWN. CHK. No. DATE REVISION OR ISSUE

DWN. CHK. No. DATE REVISION OR ISSUE

DWN. CHK.

06.09.21 ISSUE

Proposed Alteration
69 Evans Street , Freshwater
NSW

LEVEL 6

'Nominated Architect Stephen Fayle'



WOODHOUSE & DANKS PTY LTD
ARCHITECTS

Suite 207 Level 2, 20 Dale Street, Brookvale NSW 2100
E: admin@woodhousedanks.com.au
T: (02) 9939 8810
C/O FILE
E: 69 Evans Street, Freshwater Drawings/2021.08.09

ABN 26 064 690 106
ARN 3274

JOB No.
20005

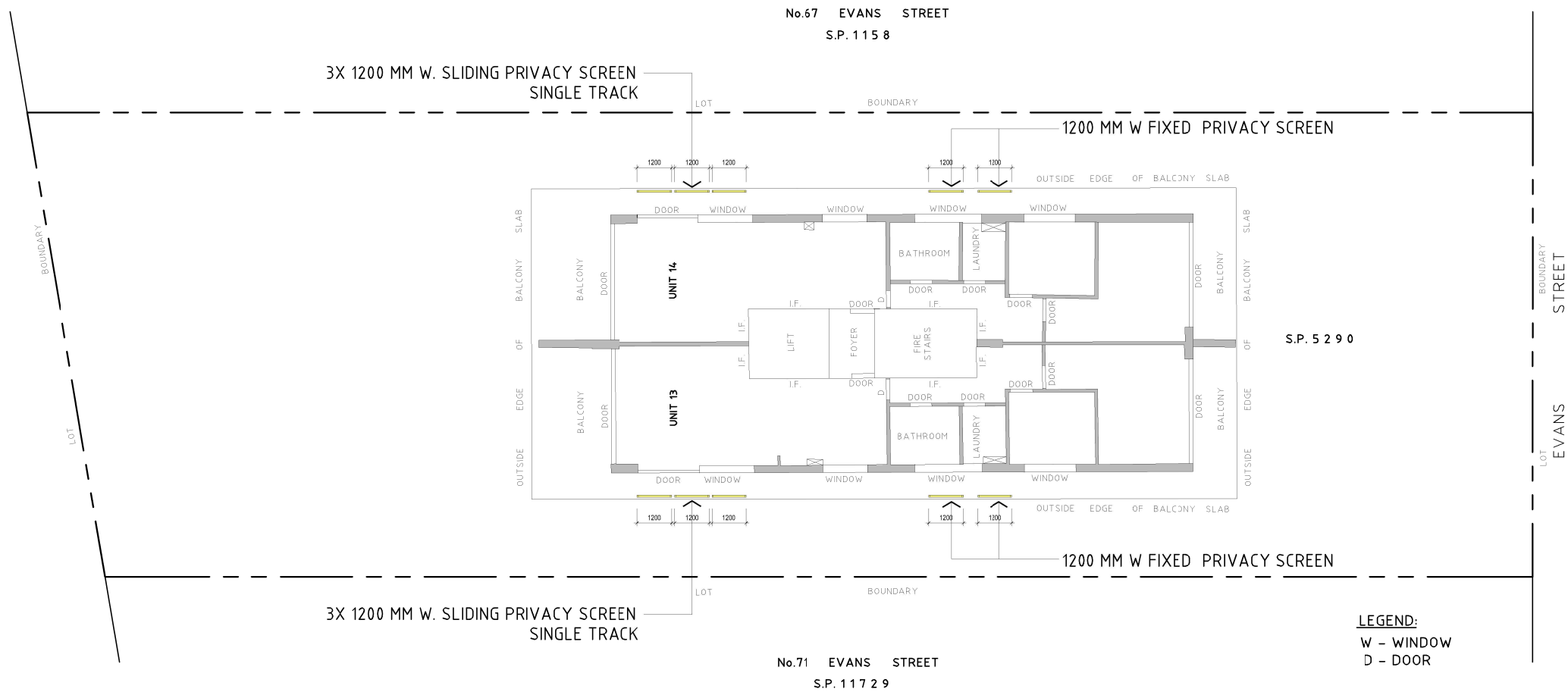
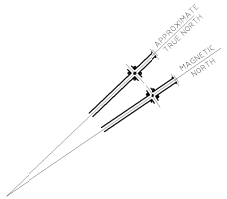
DWG. No. REV

CD 08 -

SCALE
1:200 M

DATE
SEPT 2021

DRAWN
rjo



 northern beaches council

THIS PLAN IS TO BE READ IN CONJUNCTION WITH THE CONDITIONS OF DEVELOPMENT CONSENT

DA2021/2588



GENERAL NOTES
1. CONTRACTORS MUST VERIFY ALL DIMENSIONS ON SITE PRIOR TO THE COMMENCEMENT OF ANY WORK OR THE PREPARATION OF SHOP DRAWINGS.
2. FIGURED DIMENSIONS TO BE USED IN PREFERENCE TO SCALED DIMENSIONS.
USE OF THESE DRAWINGS
The design and details shown on these drawings are applicable to this project only and may not be reproduced in whole or in part or be used for any other project or purpose without the written permission of Woodhouse & Danks Pty. Ltd. with whom copyright resides.

No. DATE REVISION OR ISSUE

DWN. CHK. No. DATE REVISION OR ISSUE

DWN. CHK. No. DATE REVISION OR ISSUE

DWN. CHK.

06.09.21 ISSUE

Proposed Alteration
69 Evans Street , Freshwater
NSW

LEVEL 7

‘Nominated Architect Stephen Fayle’

 **WOODHOUSE & DANKS** PTY LTD
ARCHITECTS
Suite 207 Level 2, 20 Dale Street, Brookvale NSW 2100
T: (02) 9939 8810
E: admin@woodhousedanks.com.au

JOB No.
20005

DWG. No. REV

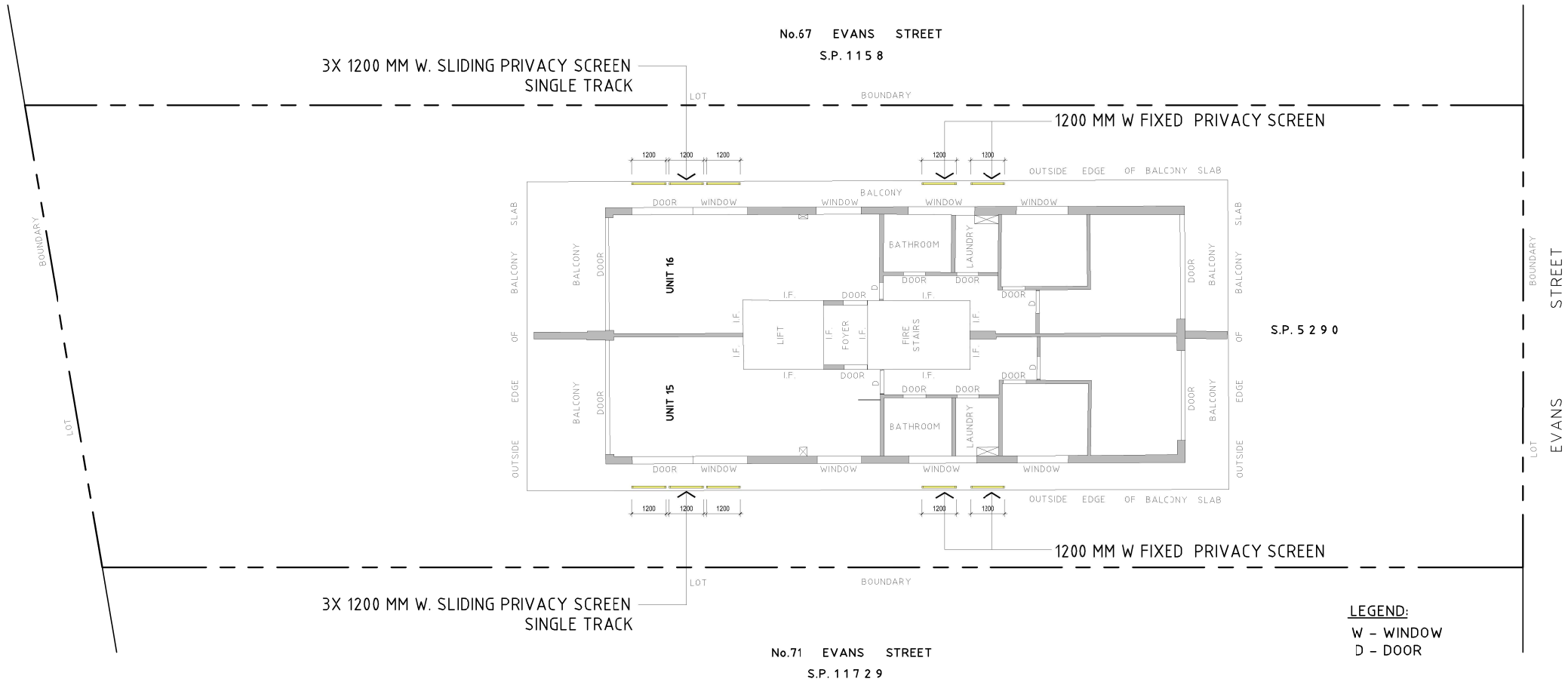
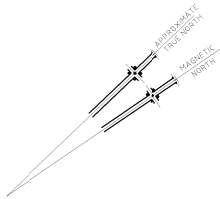
CD 09 -

SCALE
1:200 M

DATE
SEPT 2021

DRAWN
rjo

CAD FILE
E:\69 Evans Street, Freshwater\Drawings\2021.08.09



 northern
beaches
council

**THIS PLAN IS TO BE READ IN
CONJUNCTION WITH
THE CONDITIONS OF DEVELOPMENT
CONSENT**

DA2021/2588



GENERAL NOTES
1. CONTRACTORS MUST VERIFY ALL DIMENSIONS ON SITE PRIOR TO THE COMMENCEMENT OF ANY WORK OR THE PREPARATION OF SHOP DRAWINGS.
2. FIGURED DIMENSIONS TO BE USED IN PREFERENCE TO SCALED DIMENSIONS.
USE OF THESE DRAWINGS
The design and details shown on these drawings are applicable to this project only and may not be reproduced in whole or in part or be used for any other project or purpose without the written permission of Woodhouse & Danks Pty. Ltd. with whom copyright resides.

No. DATE REVISION OR ISSUE

DWN. CHK. No. DATE REVISION OR ISSUE

DWN. CHK. No. DATE REVISION OR ISSUE

DWN. CHK.

06.09.21 ISSUE

Proposed Alteration
69 Evans Street , Freshwater
NSW

LEVEL 8

‘Nominated Architect Stephen Fayle’



WOODHOUSE & DANKS PTY LTD
ARCHITECTS

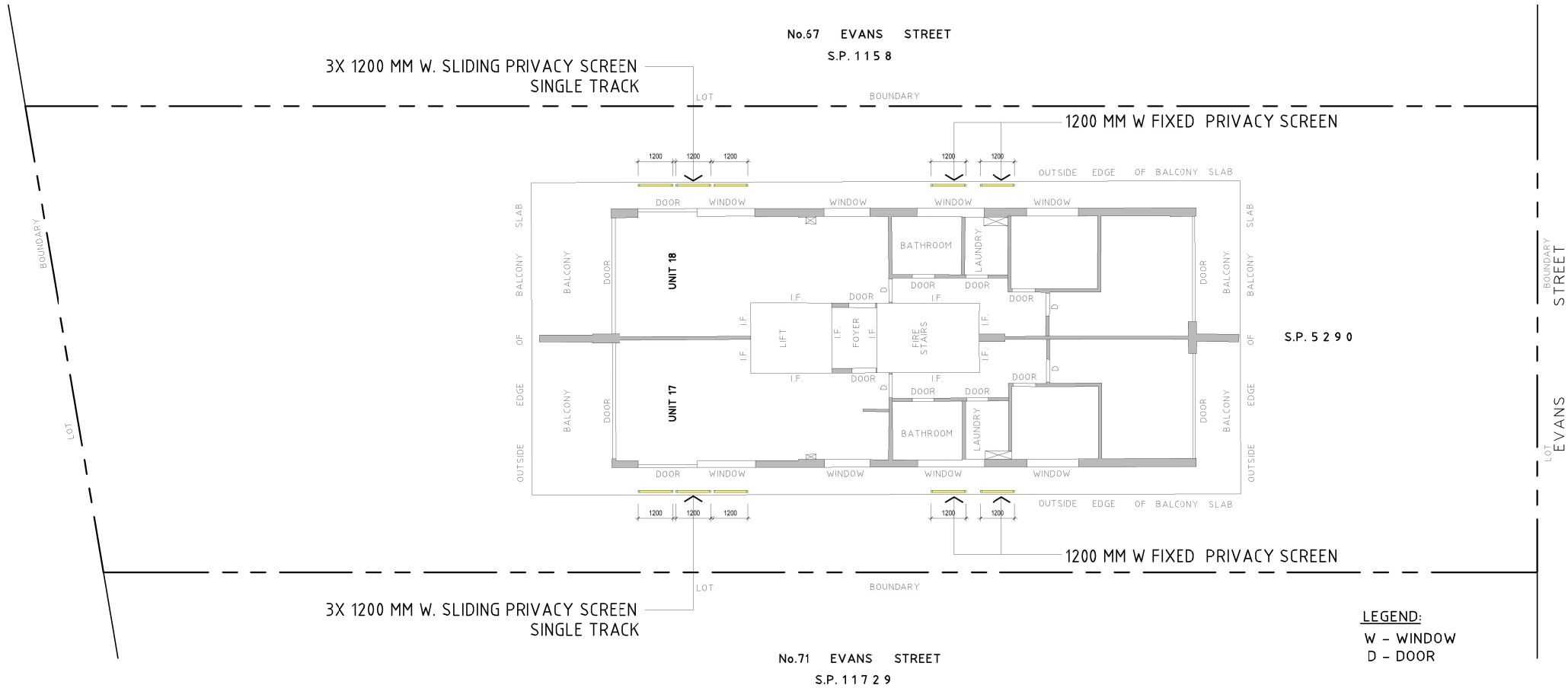
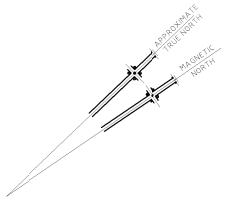
Suite 207 Level 2, 20 Dale Street, Brookvale NSW 2100
T: (02) 9939 8810
E: admin@woodhousedanks.com.au

SCALE
1:200 M

DATE
SEPT 2021
CAD FILE
E:\69 Evans Street, Freshwater\Drawings\2021.08.09

JOB No.
20005

DWG. No. REV
CD 10 -
DRAWN
rjo



 northern
beaches
council

**THIS PLAN IS TO BE READ IN
CONJUNCTION WITH
THE CONDITIONS OF DEVELOPMENT
CONSENT**

DA2021/2588



GENERAL NOTES
1. CONTRACTORS MUST VERIFY ALL DIMENSIONS ON SITE PRIOR TO THE COMMENCEMENT OF ANY WORK OR THE PREPARATION OF SHOP DRAWINGS.
2. FIGURED DIMENSIONS TO BE USED IN PREFERENCE TO SCALED DIMENSIONS.
USE OF THESE DRAWINGS
The design and details shown on these drawings are applicable to this project only and may not be reproduced in whole or in part or be used for any other project or purpose without the written permission of Woodhouse & Danks Pty. Ltd. with whom copyright resides.

No. DATE REVISION OR ISSUE

DWN. CHK. No. DATE REVISION OR ISSUE

DWN. CHK. No. DATE REVISION OR ISSUE

DWN. CHK.

06.09.21 ISSUE

Proposed Alteration
69 Evans Street, Freshwater
NSW

LEVEL 9

‘Nominated Architect Stephen Fayle’

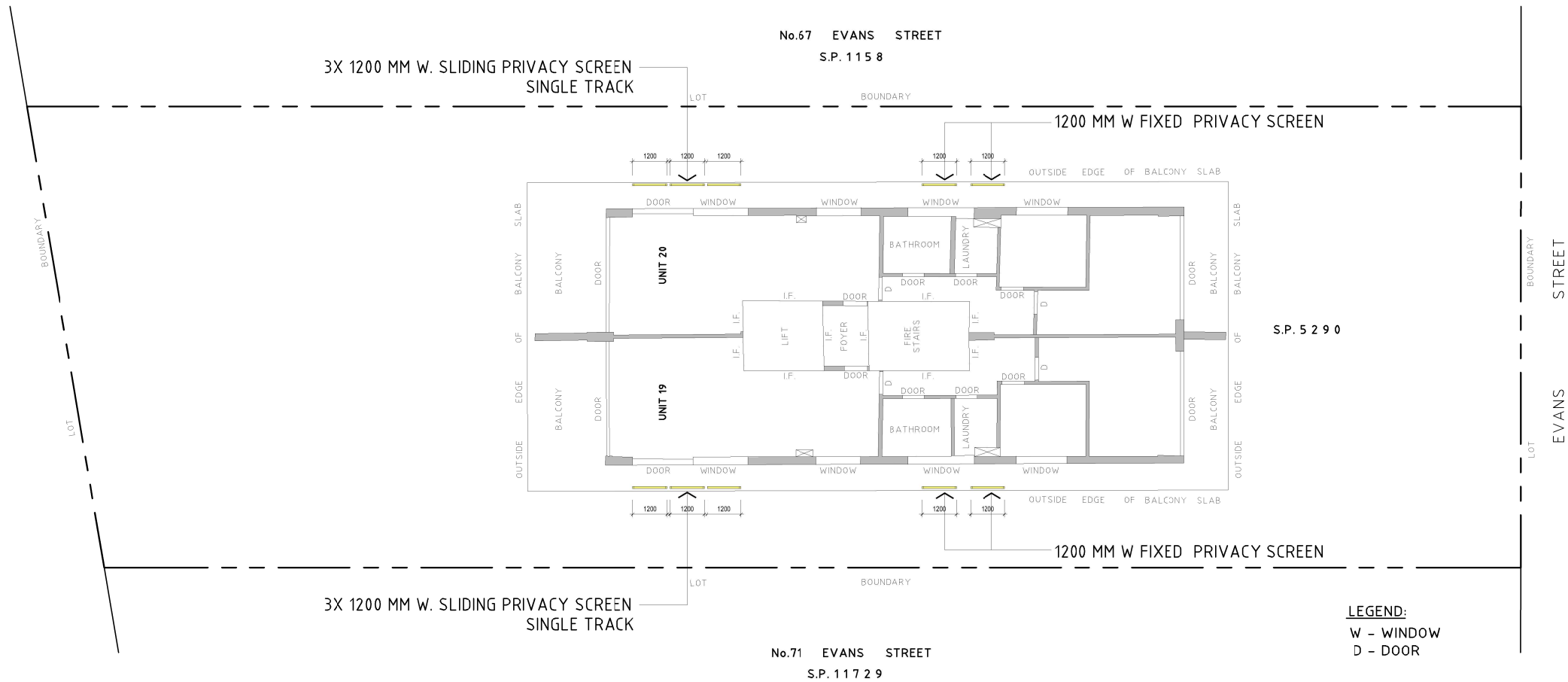
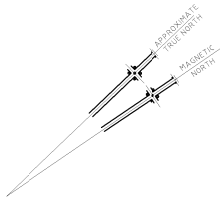
 **WOODHOUSE & DANKS** PTY LTD
ARCHITECTS
Stephen R Fayle
ABN: 26 064 690 106
ARN: 3274

Suite 207 Level 2, 20 Dale Street, Brookvale NSW 2100
T: (02) 9939 8810
E: admin@woodhousedanks.com.au

SCALE
1:200 M

DATE
SEPT 2021
CAD FILE
E:\69 Evans Street, Freshwater\Drawings\2021.08.09

JOB No.
20005
DWG. No. REV
CD 11 -
DRAWN
rjo



 northern
beaches
council

**THIS PLAN IS TO BE READ IN
CONJUNCTION WITH
THE CONDITIONS OF DEVELOPMENT
CONSENT**

DA2021/2588



GENERAL NOTES
1. CONTRACTORS MUST VERIFY ALL DIMENSIONS ON SITE PRIOR TO THE COMMENCEMENT OF ANY WORK OR THE PREPARATION OF SHOP DRAWINGS.
2. FIGURED DIMENSIONS TO BE USED IN PREFERENCE TO SCALED DIMENSIONS.
USE OF THESE DRAWINGS
The design and details shown on these drawings are applicable to this project only and may not be reproduced in whole or in part or be used for any other project or purpose without the written permission of Woodhouse & Danks Pty. Ltd. with whom copyright resides.

No. DATE REVISION OR ISSUE

DWN. CHK. No. DATE REVISION OR ISSUE

DWN. CHK. No. DATE REVISION OR ISSUE

DWN. CHK.

06.09.21 ISSUE

Proposed Alteration
69 Evans Street, Freshwater
NSW

LEVEL 10

‘Nominated Architect Stephen Fayle’



WOODHOUSE & DANKS PTY LTD
ARCHITECTS

ABN: 26 064 690 106
ARN: 3274

Suite 207 Level 2, 20 Dale Street, Brookvale NSW 2100

T: (02) 9939 8810
E: admin@woodhousedanks.com.au

SCALE
1:200 M

DATE
SEPT 2021

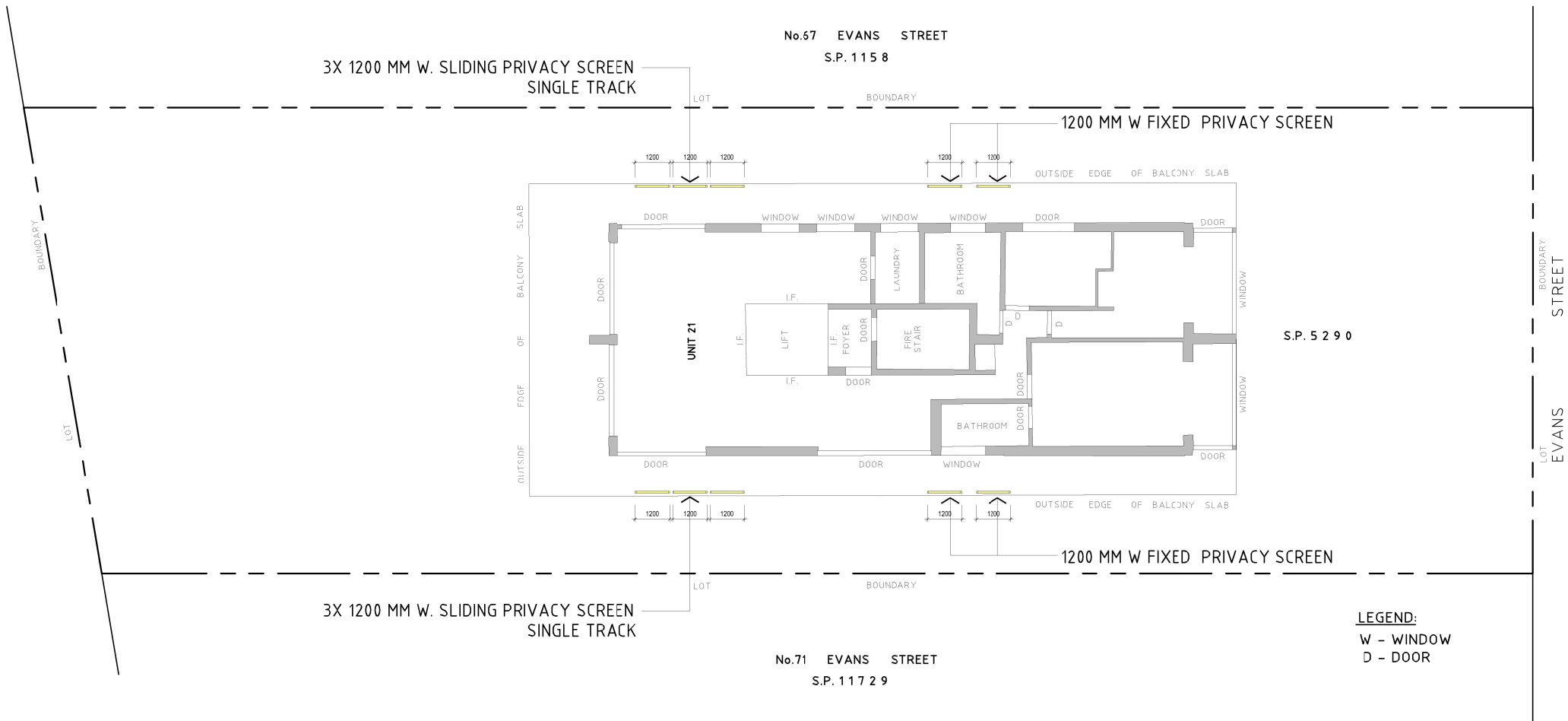
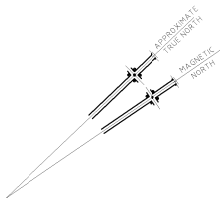
CAD FILE
E:\69 Evans Street, Freshwater\Drawings\2021.08.09

JOB No.
20005

DWG. No. REV

CD 12 -

DRAWN
rjo



THIS PLAN IS TO BE READ IN CONJUNCTION WITH THE CONDITIONS OF DEVELOPMENT CONSENT

DA2021/2588

0 5 10 15 20 25 30 35 40 45 50 55 60 65 70 75 80 85 90 95 100

GENERAL NOTES
1. CONTRACTORS MUST VERIFY ALL DIMENSIONS ON SITE PRIOR TO THE COMMENCEMENT OF ANY WORK OR THE PREPARATION OF SHOP DRAWINGS.
2. FIGURED DIMENSIONS TO BE USED IN PREFERENCE TO SCALED DIMENSIONS.
USE OF THESE DRAWINGS
The design and details shown on these drawings are applicable to this project only and may not be reproduced in whole or in part or be used for any other project or purpose without the written permission of Woodhouse & Danks Pty. Ltd. with whom copyright resides.

No. DATE REVISION OR ISSUE

DWN. CHK. No. DATE REVISION OR ISSUE

DWN. CHK. No. DATE REVISION OR ISSUE

DWN. CHK.

06.09.21 ISSUE

Proposed Alteration
69 Evans Street, Freshwater
NSW

LEVEL 11

'Nominated Architect Stephen Fayle'



WOODHOUSE & DANKS PTY LTD
ARCHITECTS

ABN: 26 064 690 106
ARN: 3274

Suite 207 Level 2, 20 Dale Street, Brookvale NSW 2100

T: (02) 9939 8810
E: admin@woodhousedanks.com.au

SCALE
1:200 M

DATE
SEPT 2021

E: 69 Evans Street, Freshwater Drawings 2021.08.09

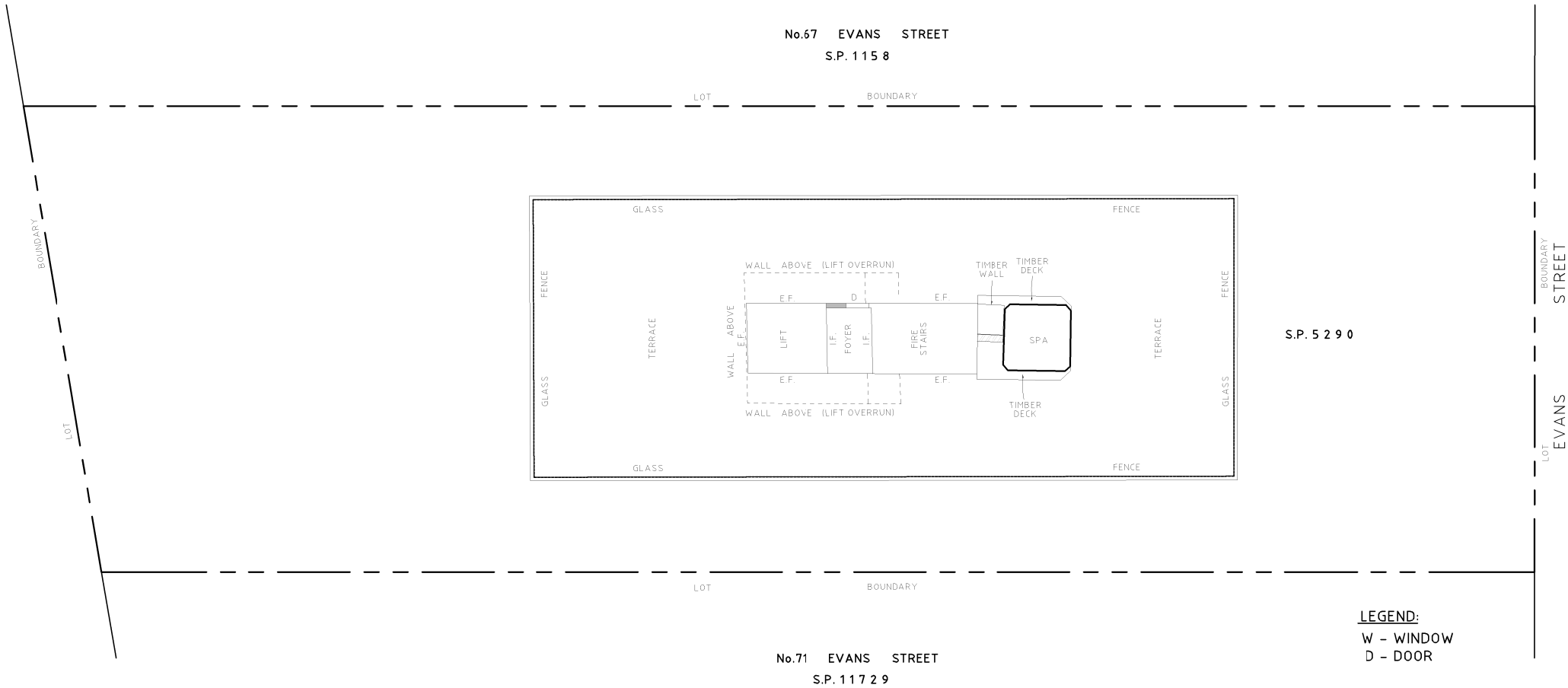
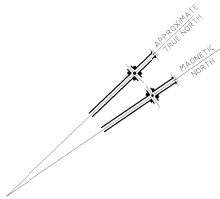
JOB No.

20005

DWG. No.

CD 13 -

DRAWN
rjo



 northern beaches council

THIS PLAN IS TO BE READ IN CONJUNCTION WITH THE CONDITIONS OF DEVELOPMENT CONSENT

DA2021/2588



GENERAL NOTES
1. CONTRACTORS MUST VERIFY ALL DIMENSIONS ON SITE PRIOR TO THE COMMENCEMENT OF ANY WORK OR THE PREPARATION OF SHOP DRAWINGS.
2. FIGURED DIMENSIONS TO BE USED IN PREFERENCE TO SCALED DIMENSIONS.
USE OF THESE DRAWINGS
The design and details shown on these drawings are applicable to this project only and may not be reproduced in whole or in part or be used for any other project or purpose without the written permission of Woodhouse & Danks Pty. Ltd. with whom copyright resides.

No. DATE REVISION OR ISSUE

DWN. CHK. No. DATE REVISION OR ISSUE

DWN. CHK. No. DATE REVISION OR ISSUE

DWN. CHK.

06.09.21 ISSUE

Proposed Alteration
69 Evans Street , Freshwater
NSW

ROOF DECK

‘Nominated Architect Stephen Fayle’



WOODHOUSE & DANKS PTY LTD
ARCHITECTS
Stephen R Fayle
ABN: 26 064 690 106
ARN: 3274

Suite 207 Level 2, 20 Dale Street, Brookvale NSW 2100
T: (02) 9939 8810
E: admin@woodhousedanks.com.au

SCALE
1:200 M

DATE
SEPT 2021

CAD FILE
E:\69 Evans Street, Freshwater\Drawings\2021.08.09

JOB No.
20005

DWG. No. REV

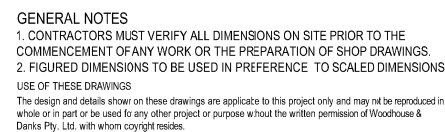
CD 14 -

DRAWN
rjo



3X 1200 MM W. SLIDING PRIVACY SCREEN
SINGLE TRACK

▽ LEVEL 1 RL 12.13



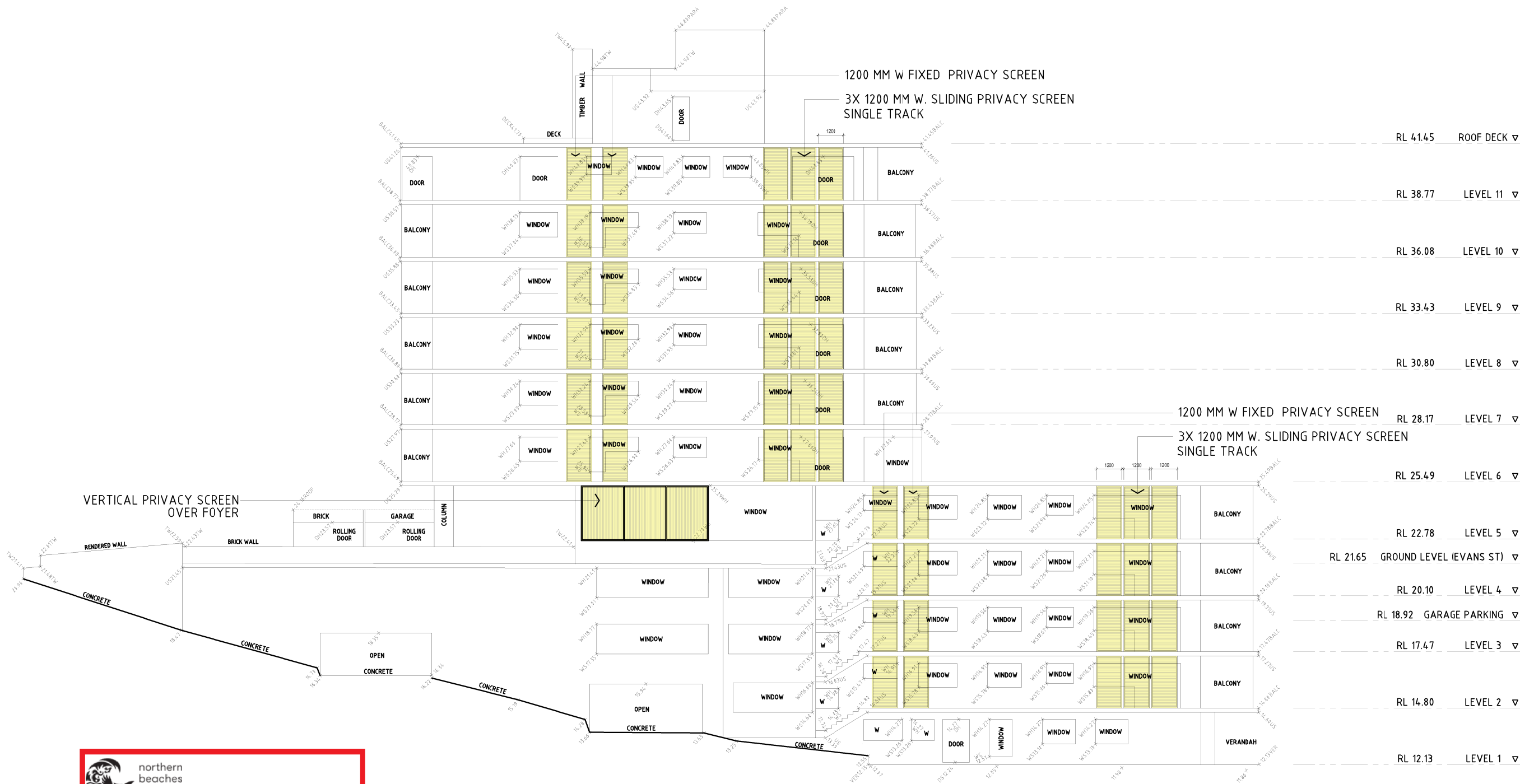
DWN. CHK.

ELEVATION EASTERN WALL

DRAWN rio

1200 MM WIDTH SLIDING PRIVACY SCREEN

VERTICAL PRIVACY SCREEN



 **northern beaches council**

THIS PLAN IS TO BE READ IN CONJUNCTION WITH THE CONDITIONS OF DEVELOPMENT CONSENT

DA2021/2588

ELEVATION OF WESTERN WALL



GENERAL NOTES

1. CONTRACTORS MUST VERIFY ALL DIMENSIONS ON SITE PRIOR TO THE COMMENCEMENT OF ANY WORK OR THE PREPARATION OF SHOP DRAWINGS.

2. FIGURED DIMENSIONS TO BE USED IN PREFERENCE TO SCALED DIMENSIONS.

USE OF THESE DRAWINGS

The design and details shown on these drawings are applicable to this project only and may not be reproduced in whole or in part or be used for any other project or purpose without the written permission of Woodhouse & Danks Pty. Ltd. with whom copyright resides.

No. DATE REVISION OR ISSUE

DWN. CHK. No. DATE REVISION OF ISSUE

"a" 14.12.21 "a" Vertical privacy screen over foyer

06.09.21 ISSUE

DWN. CHK. No. DATE REVISION OF ISSUE

DWN. CHK.

Proposed Alteration

69 Evans Street, Freshwater

NSW

ELEVATION WESTERN WALL



WOODHOUSE & DANKS ARCHITECTS

Suite 207 Level 2, 20 Dale Street, Brookvale NSW 2100

T: (02) 9939 8810

E: admin@woodhousedanks.com.au

SCALE

1:200 M

DATE

DEC 2021

CAD FILE

E:\69 Evans Street, Freshwater\Drawings\2021.08.09

JOB No.

20005

DWG. No. REV

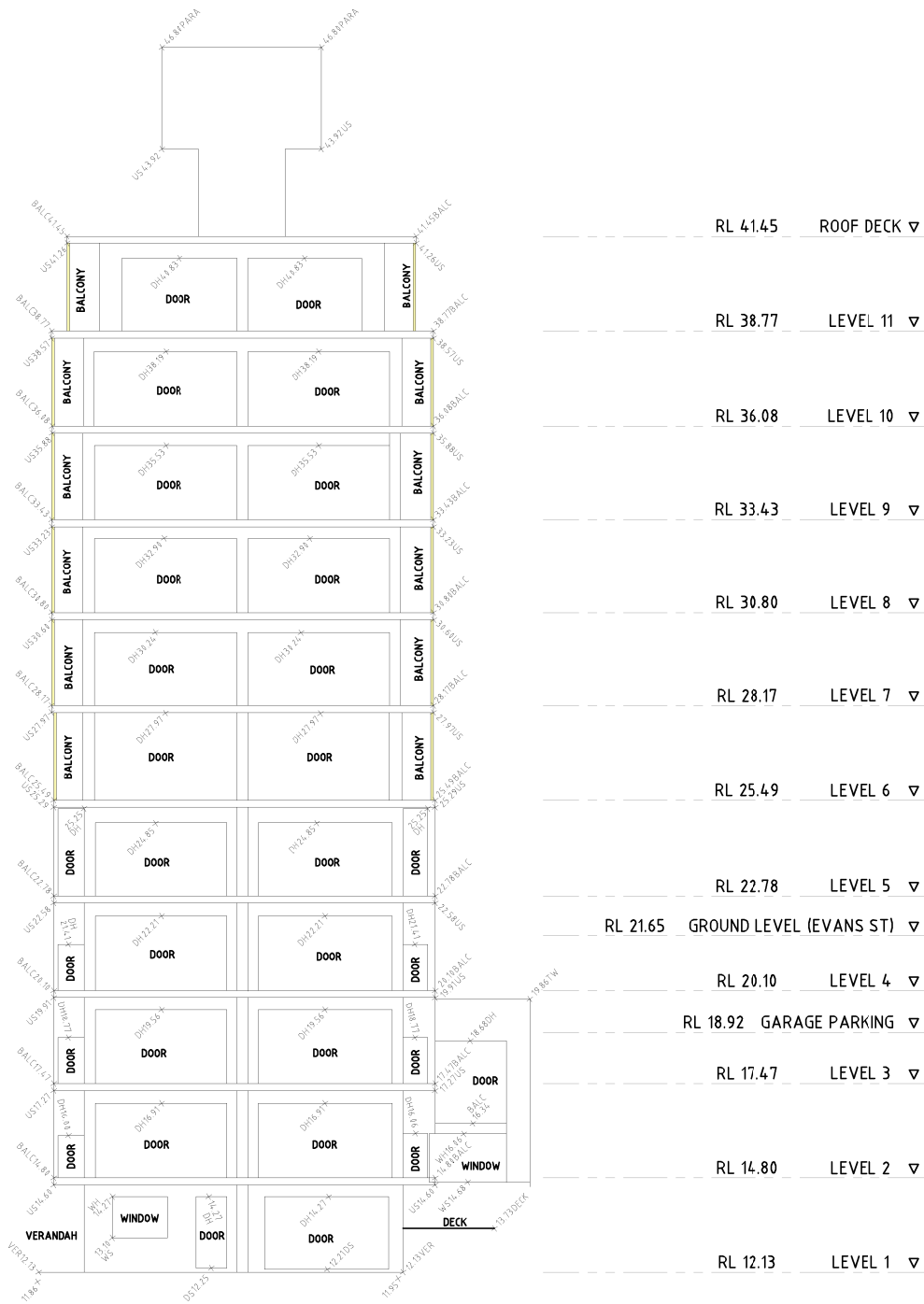
CD 21 a

DRAWN

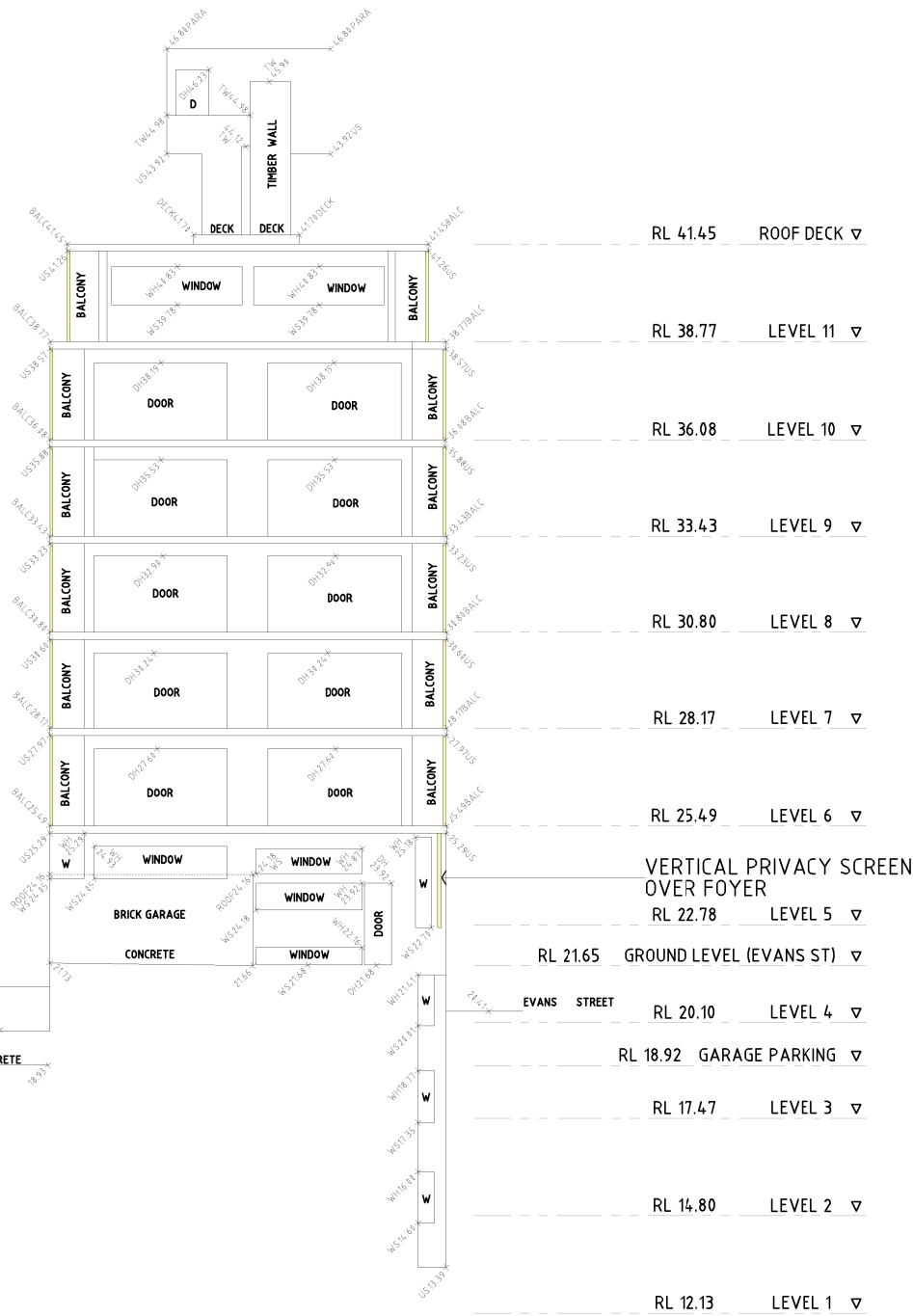
rjo

1200 MM WIDTH SLIDING PRIVACY SCREEN

VERTICAL PRIVACY SCREEN



ELEVATION OF SOUTHERN WALL



ELEVATION OF NORTHERN WALL



GENERAL NOTES

1. CONTRACTORS MUST VERIFY ALL DIMENSIONS ON SITE PRIOR TO THE COMMENCEMENT OF ANY WORK OR THE PREPARATION OF SHOP DRAWINGS.

2. FIGURED DIMENSIONS TO BE USED IN PREFERENCE TO SCALED DIMENSIONS.

USE OF THESE DRAWINGS

The design and details shown on these drawings are applicable to this project only and may not be reproduced in whole or in part or be used for any other project or purpose without the written permission of Woodhouse & Danks Pty. Ltd. with whom copyright resides.

No. DATE REVISION OR ISSUE

DWN. CHK. No. DATE REVISION OR ISSUE

"a" 14.12.21 "a" Vertical privacy screen over foyer
06.09.21 ISSUE

DWN. CHK. No. DATE REVISION OR ISSUE

DWN. CHK.

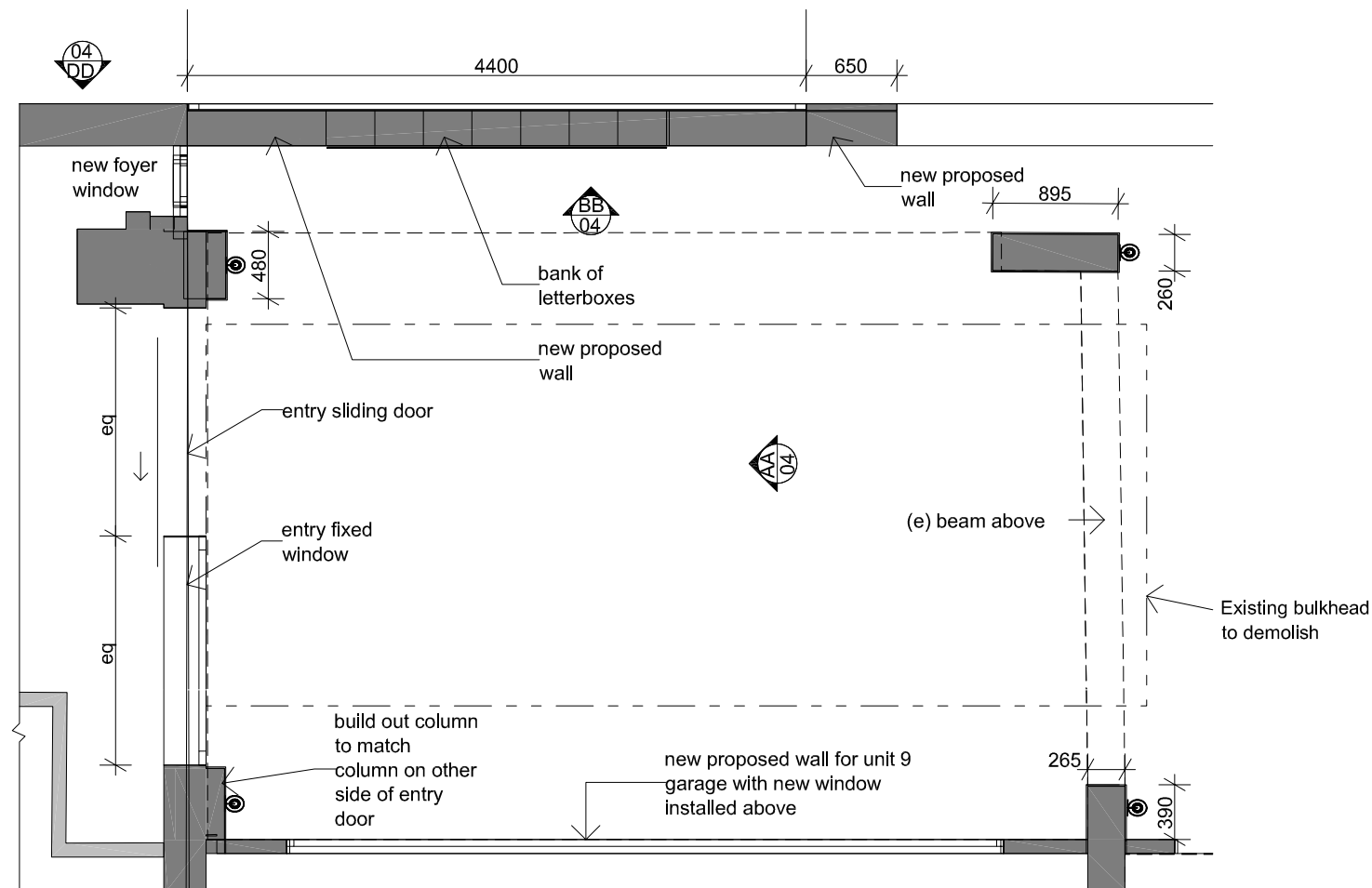
ELEVATION SOUTHERN & NORTHERN WALL

Proposed Alteration
69 Evans Street , Freshwater
NSW

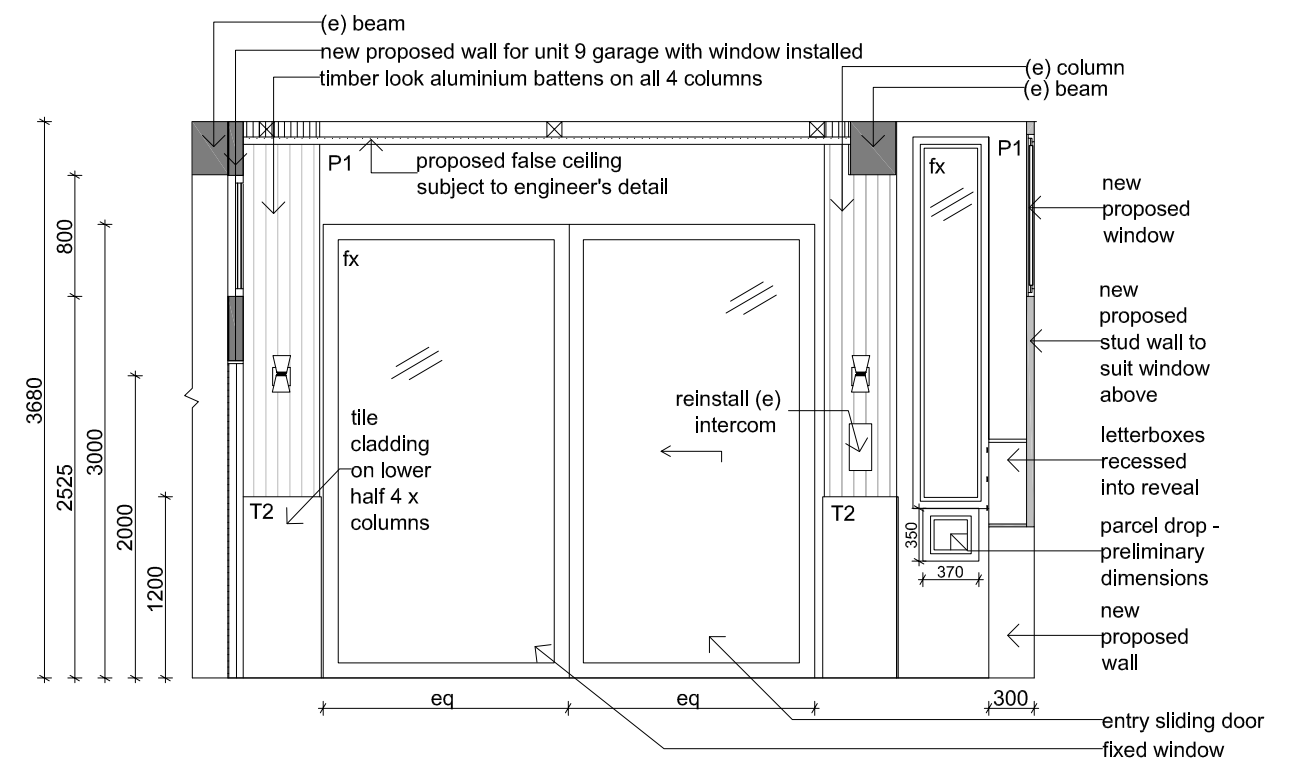
WOODHOUSE & DANKS PTY LTD
ARCHITECTS
Suite 207 Level 2, 20 Dale Street, Brookvale NSW 2100
E: admin@woodhousedanks.com.au
T: (02) 9939 8810
F: (02) 9939 8810
A: 69 Evans Street, Freshwater NSW 2100

JOB No.
20005
DWG. No.
CD 22 a
REV
jjo

SCALE
1:200 M



01 Entry Plan
1:50



AA Entry Elevation
1:50



0 5 10 15 20 25 30 35 40 45 50 55 60 65 70 75 80 85 90 95 100

GENERAL NOTES
1. CONTRACTORS MUST VERIFY ALL DIMENSIONS ON SITE PRIOR TO THE COMMENCEMENT OF ANY WORK OR THE PREPARATION OF SHOP DRAWINGS.
2. FIGURED DIMENSIONS TO BE USED IN PREFERENCE TO SCALED DIMENSIONS.
USE OF THESE DRAWINGS
The design and details shown on these drawings are applicable to this project only and may not be reproduced in whole or in part or be used for any other project or purpose without the written permission of Woodhouse & Danks Pty. Ltd. with whom copyright resides.

No. DATE REVISION OR ISSUE

DWN. CHK. No. DATE REVISION OR ISSUE

09.08.21 ISSUE

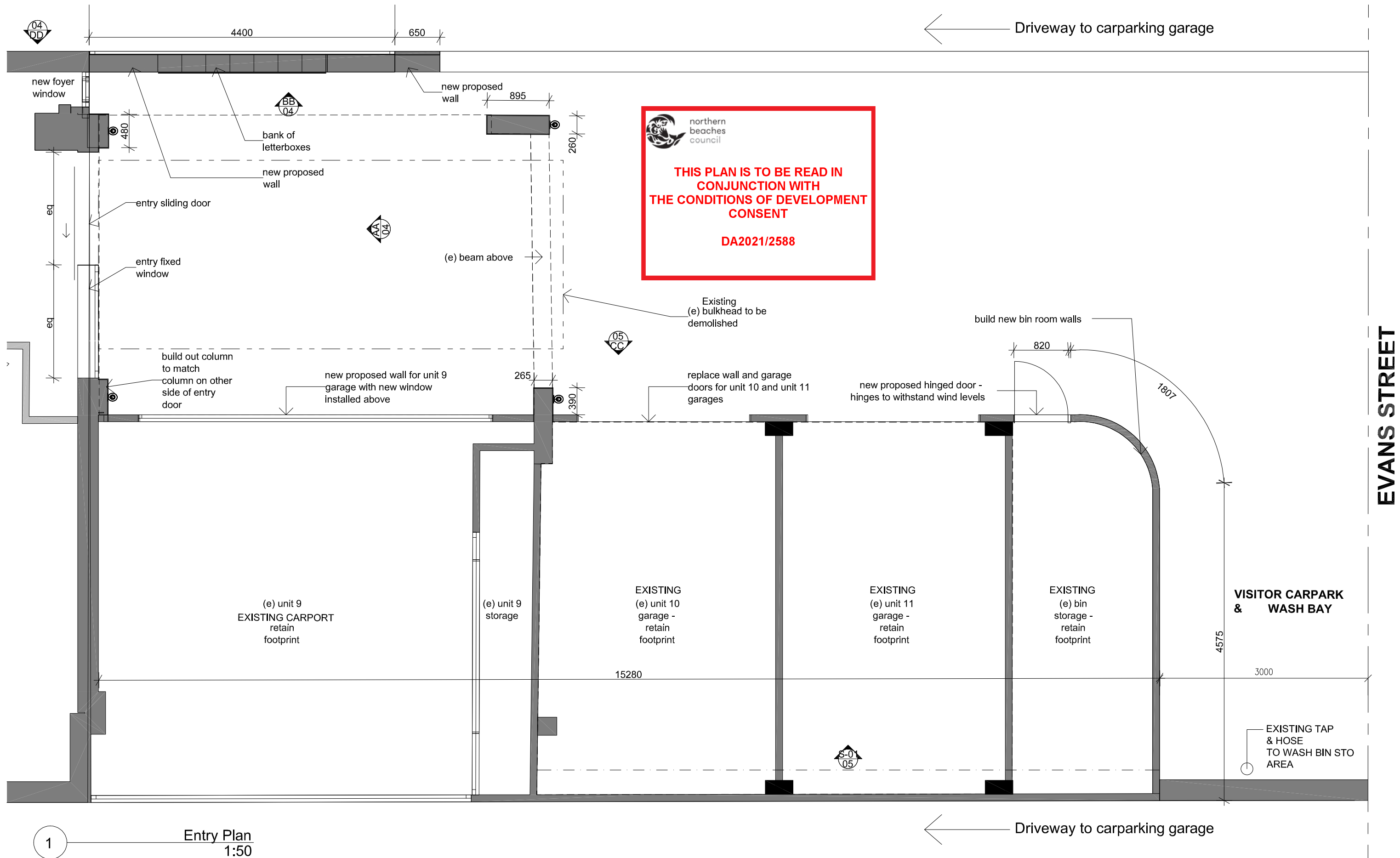
DWN. CHK.

Proposed Alteration
69 Evans Street, Freshwater
NSW

ENTRY PLAN & ELEVATION

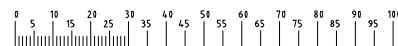
'Nominated Architect Stephen Fayle'
DESIGN SUPPLIED BY: KH DESIGN GROUP

JOB No. 20005
WOODHOUSE & DANKS PTY LTD ARCHITECTS
Suite 207 Level 2, 20 Dale Street, Brookvale NSW 2100
T: (02) 9939 8810
E: admin@woodhousedanks.com.au
DWG. No. CD-40-
REV
SCALE 1:50 @A3:
DATE AUG 2021
DRAWN rjo



1

Entry Plan
1:50



GENERAL NOTES
1. CONTRACTORS MUST VERIFY ALL DIMENSIONS ON SITE PRIOR TO THE COMMENCEMENT OF ANY WORK OR THE PREPARATION OF SHOP DRAWINGS.
2. FIGURED DIMENSIONS TO BE USED IN PREFERENCE TO SCALED DIMENSIONS.
USE OF THESE DRAWINGS
The design and details shown on these drawings are applicable to this project only and may not be reproduced in whole or in part or be used for any other project or purpose without the written permission of Woodhouse & Danks Pty. Ltd. with whom copyright resides.

No. DATE REVISION OR ISSUE

DWN. CHK. No. DATE REVISION OR ISSUE

09.08.21 ISSUE
DWN. CHK. No. DATE REVISION OR ISSUE

DWN. CHK.

Proposed Alteration
69 Evans Street, Freshwater
NSW

ENTRY PLAN

'Nominated Architect Stephen Fayle'
DESIGN SUPPLIED BY: KH DESIGN GROUP

WOODHOUSE & DANKS PTY LTD
ARCHITECTS
Suite 207 Level 2, 20 Dale Street, Brookvale NSW 2100
T: (02) 9939 8810
E: admin@woodhousedanks.com.au

JOB No.
20005

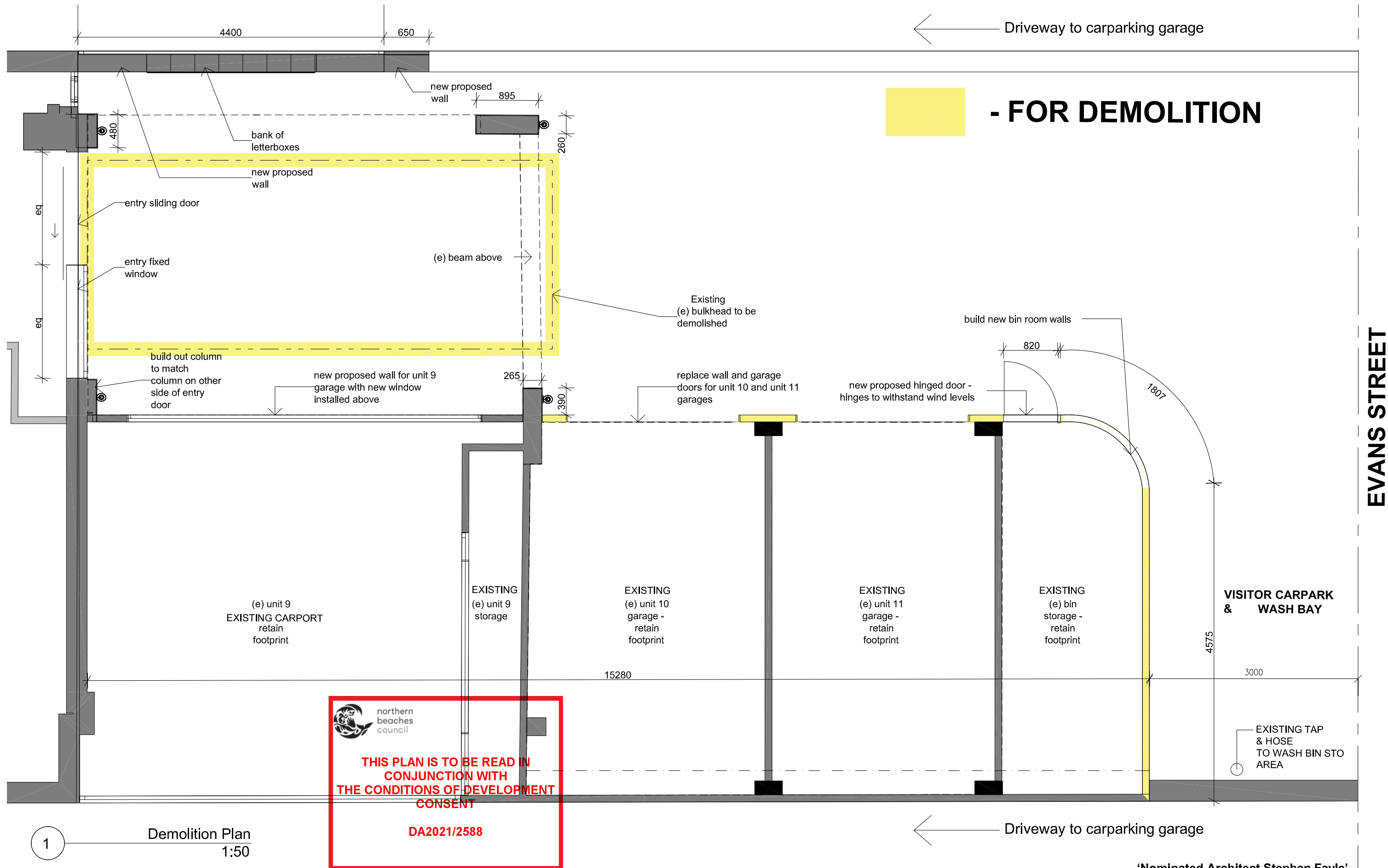
DWG. No.
CD-41

SCALE
1:50 @A3:

DATE
AUG 2021

DRAWN
rjo

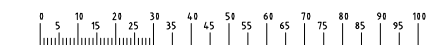
E:\69 Evans Street, Freshwater\Drawings\2021.08.09



 northern beaches council

THIS PLAN IS TO BE READ IN CONJUNCTION WITH THE CONDITIONS OF DEVELOPMENT CONSENT

DA2021/2588



GENERAL NOTES
1. CONTRACTORS MUST VERIFY ALL DIMENSIONS ON SITE PRIOR TO THE COMMENCEMENT OF ANY WORK OR THE PREPARATION OF SHOP DRAWINGS.
2. FIGURED DIMENSIONS TO BE USED IN PREFERENCE TO SCALED DIMENSIONS.
USE OF THESE DRAWINGS
The design and details shown on these drawings are applicable to this project only and may not be reproduced in whole or in part or be used for any other project or purpose without the written permission of Woodhouse & Danks Pty. Ltd. with whom copyright resides.

No. DATE REVISION OR ISSUE

DWN. CHK. No. DATE REVISION OR ISSUE

09.08.21 ISSUE

DWN. CHK.

Proposed Alteration
69 Evans Street, Freshwater
NSW

DEMOLITION PLAN

'Nominated Architect Stephen Fayle'
DESIGN SUPPLIED BY: KH DESIGN GROUP

 **WOODHOUSE & DANKS** PTY LTD
ARCHITECTS
Suite 207 Level 2, 20 Dale Street, Brookvale NSW 2100
T: (02) 9939 8810
E: admin@woodhousedanks.com.au

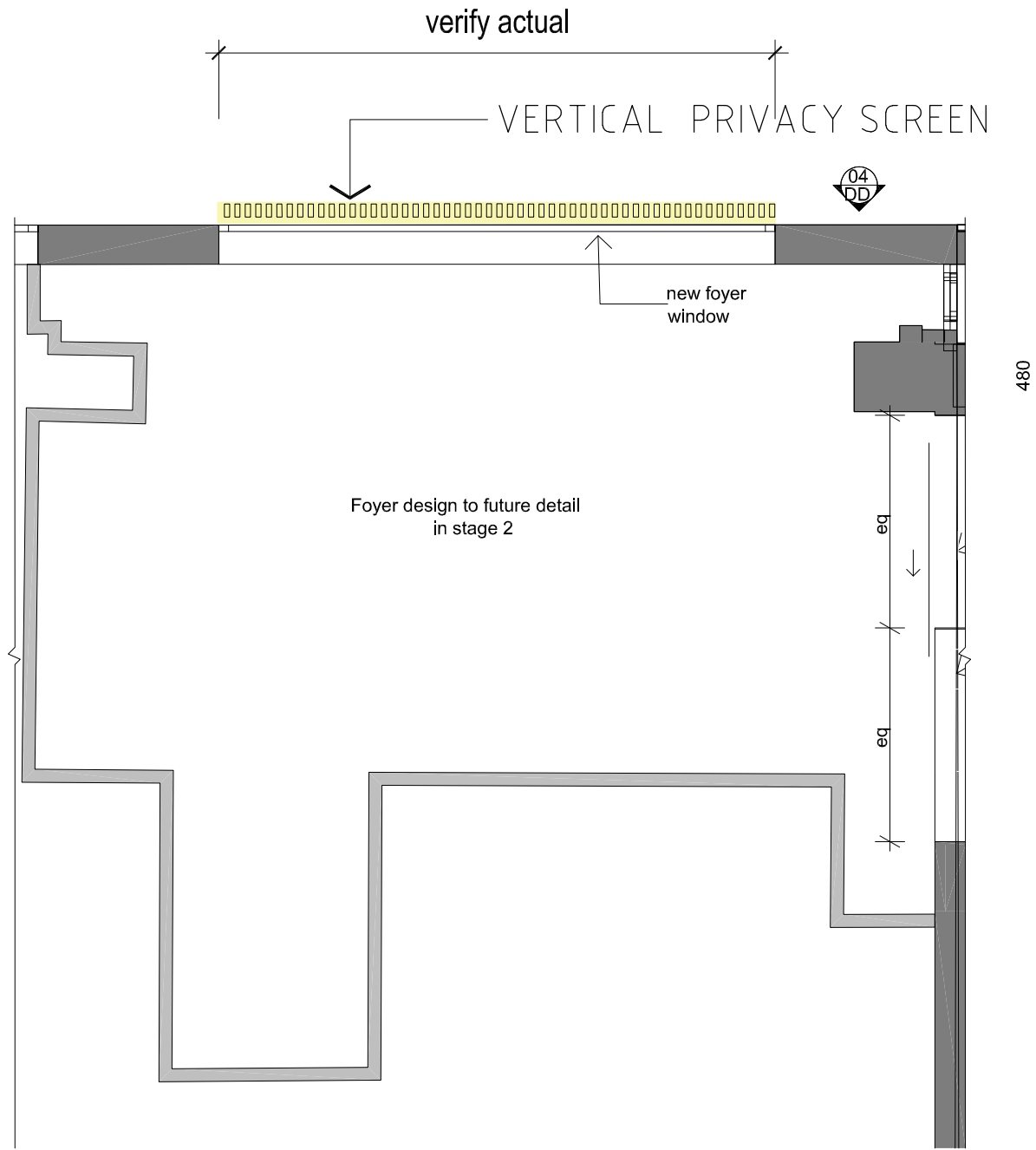
20005
DWG. No. REV
CD-42 -
DRAWN rjo
SCALE 1:50 @A3:
DATE AUG 2021
CADD FILE E:\69 Evans Street, Freshwater\Drawings\2021,08.09



northern
beaches
council

THIS PLAN IS TO BE READ IN
CONJUNCTION WITH
THE CONDITIONS OF DEVELOPMENT
CONSENT

DA2021/2588



1

Foyer Plan
1:50



GENERAL NOTES
1. CONTRACTORS MUST VERIFY ALL DIMENSIONS ON SITE PRIOR TO THE COMMENCEMENT OF ANY WORK OR THE PREPARATION OF SHOP DRAWINGS.
2. FIGURED DIMENSIONS TO BE USED IN PREFERENCE TO SCALED DIMENSIONS.
USE OF THESE DRAWINGS
The design and details shown on these drawings are applicable to this project only and may not be reproduced in whole or in part or be used for any other project or purpose without the written permission of Woodhouse & Danks Pty. Ltd. with whom copyright resides.

No.	DATE	REVISION OR ISSUE
-----	------	-------------------

DWN.	CHK.	No.	DATE	REVISION OR ISSUE
------	------	-----	------	-------------------


"a"	14.12.21	"a" Vertical privacy screen over foyer
09.08.21	ISSUE	

DWN.	CHK.
------	------

Proposed Alteration
69 Evans Street , Freshwater
NSW

FOYER PLAN

‘Nominated Architect Stephen Fayle’
DESIGN SUPPLIED BY: KH DESIGN GROUP



WOODHOUSE & DANKS
ARCHITECTS

Level 2, 20 Dale Street, Brookvale NSW 2100
E: admin@woodhousedanks.com.au

ABN: 26 064 690 106
ARN: 3274

T: (02) 9939 8810

SCALE
1:50 @A3:

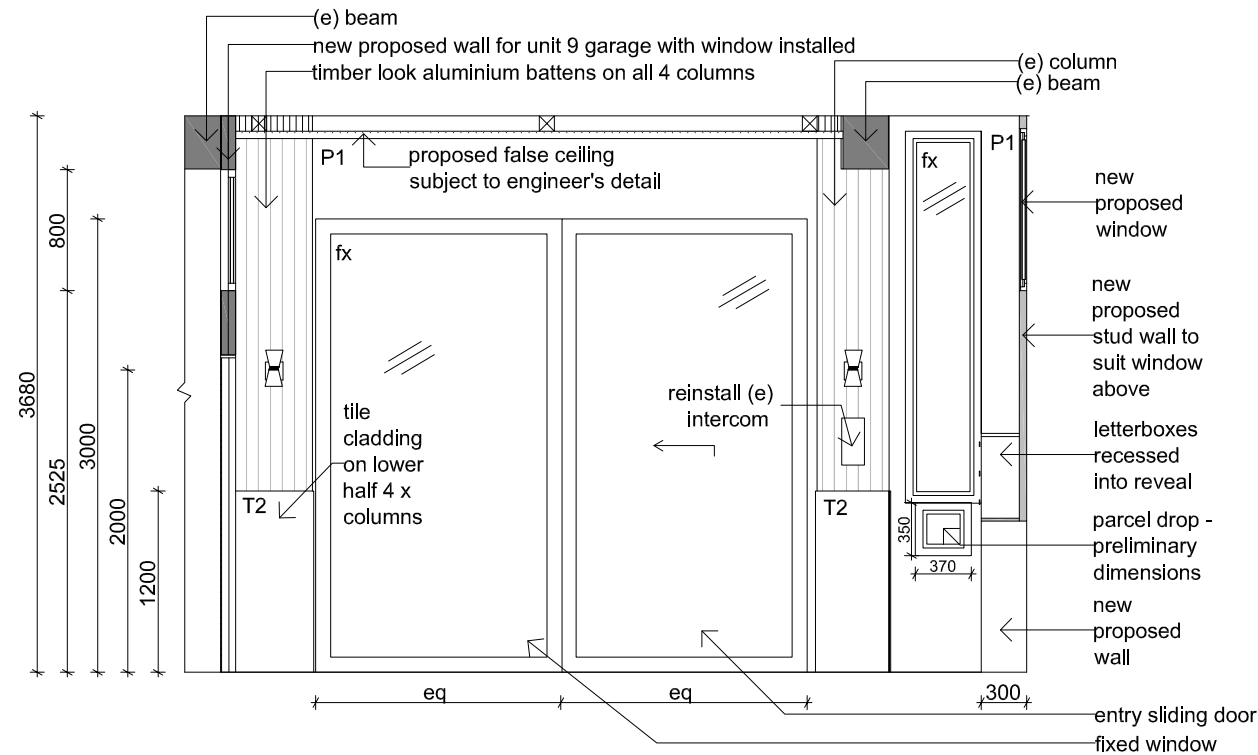
DATE
AUG 2021

DRAWN
rjo

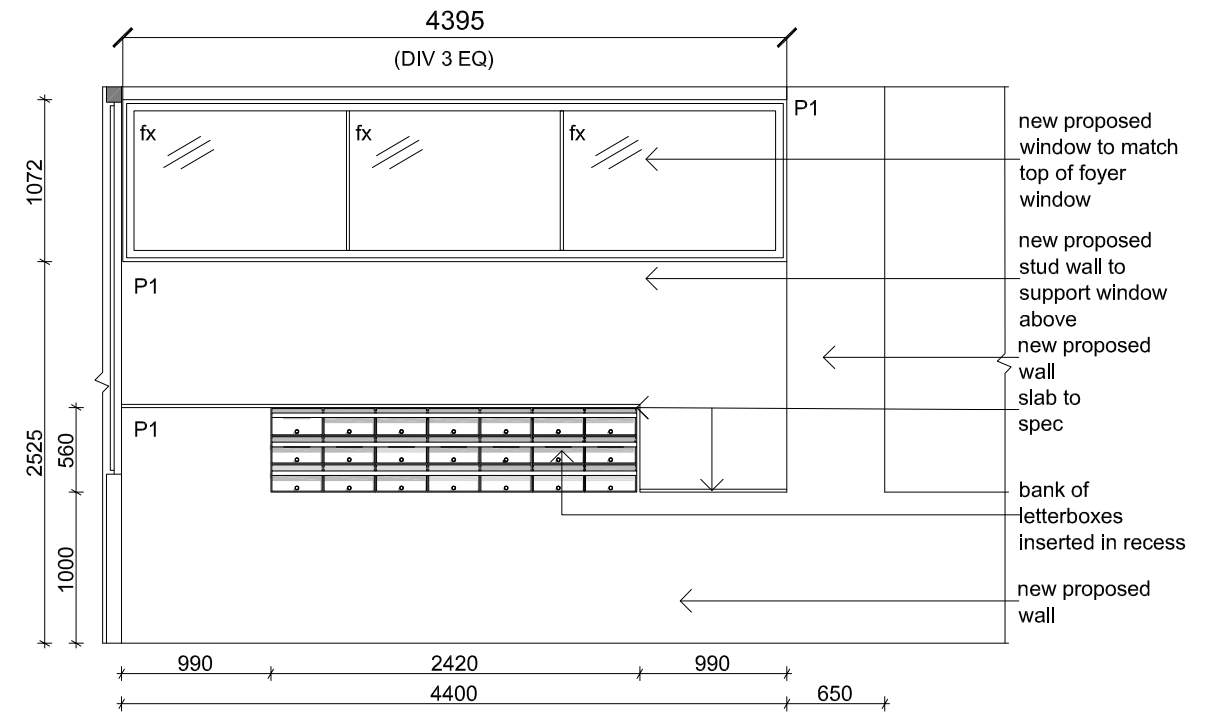
JOB No.
20005

DWG. No.
CD-43

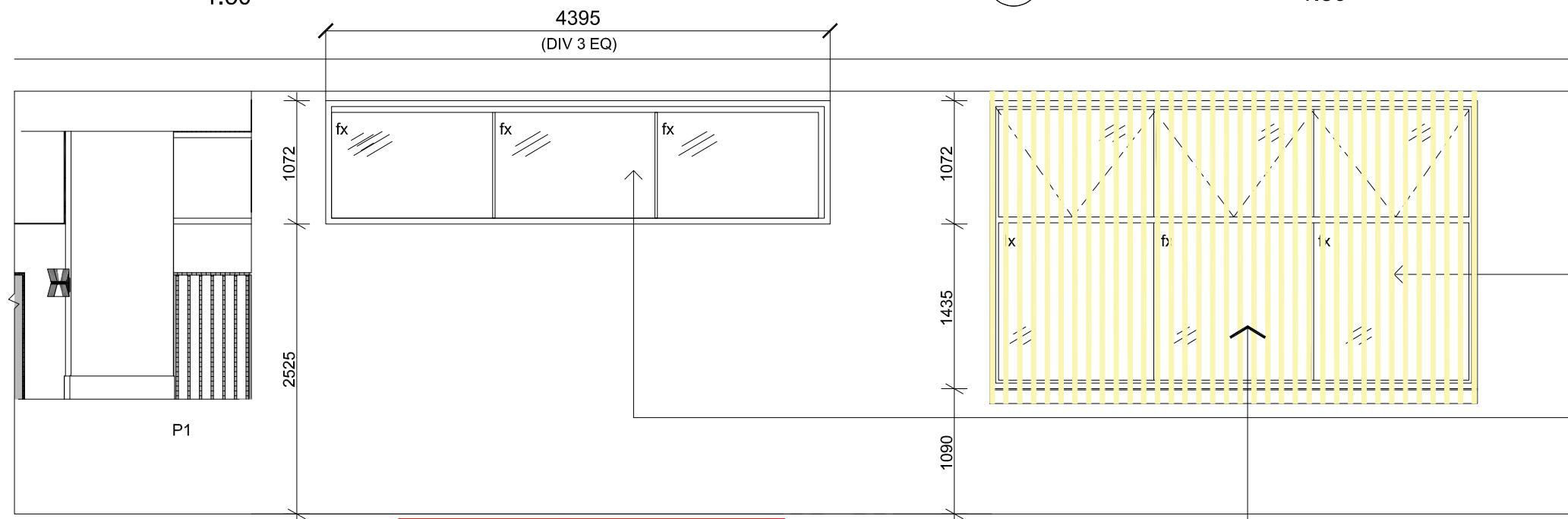
REV



1 Elevation AA
1:50



2 Elevation BB
1:50



3 Elevation DD
1:50



0 5 10 15 20 25 30 35 40 45 50 55 60 65 70 75 80 85 90 95 100

GENERAL NOTES
1. CONTRACTORS MUST VERIFY ALL DIMENSIONS ON SITE PRIOR TO THE COMMENCEMENT OF ANY WORK OR THE PREPARATION OF SHOP DRAWINGS.
2. FIGURED DIMENSIONS TO BE USED IN PREFERENCE TO SCALED DIMENSIONS.
USE OF THESE DRAWINGS
The design and details shown on these drawings are applicable to this project only and may not be reproduced in whole or in part or be used for any other project or purpose without the written permission of Woodhouse & Danks Pty. Ltd. with whom copyright resides.

No. DATE REVISION OR ISSUE

DWN. CHK. No. DATE REVISION OR ISSUE

"a" 14.12.21 "a" Vertical privacy screen over foyer
09.08.21 ISSUE

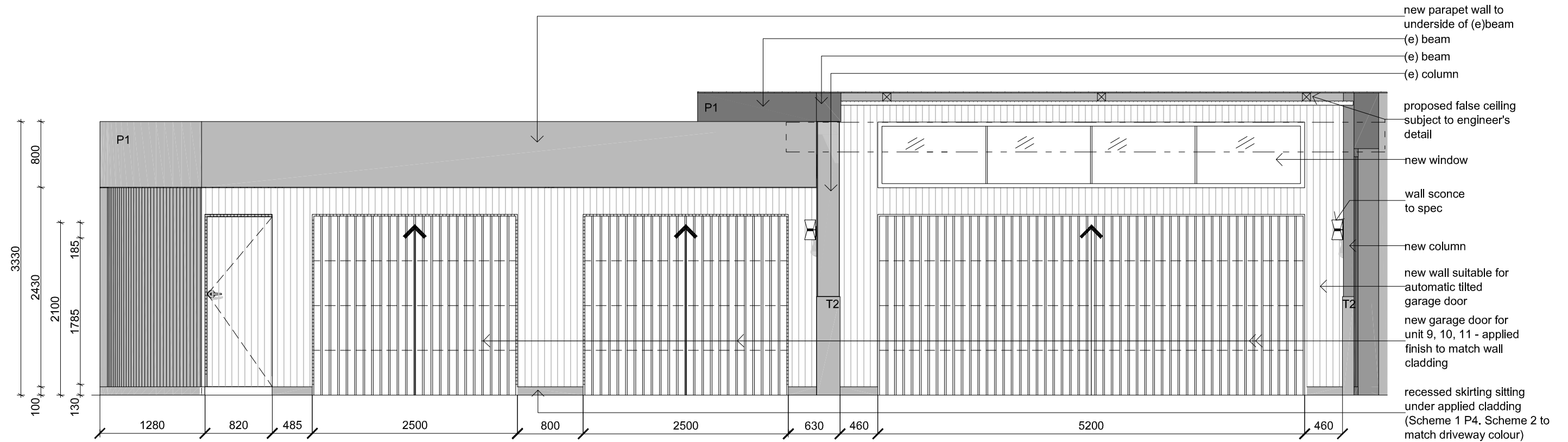
DWN. CHK.

Proposed Alteration
69 Evans Street, Freshwater
NSW

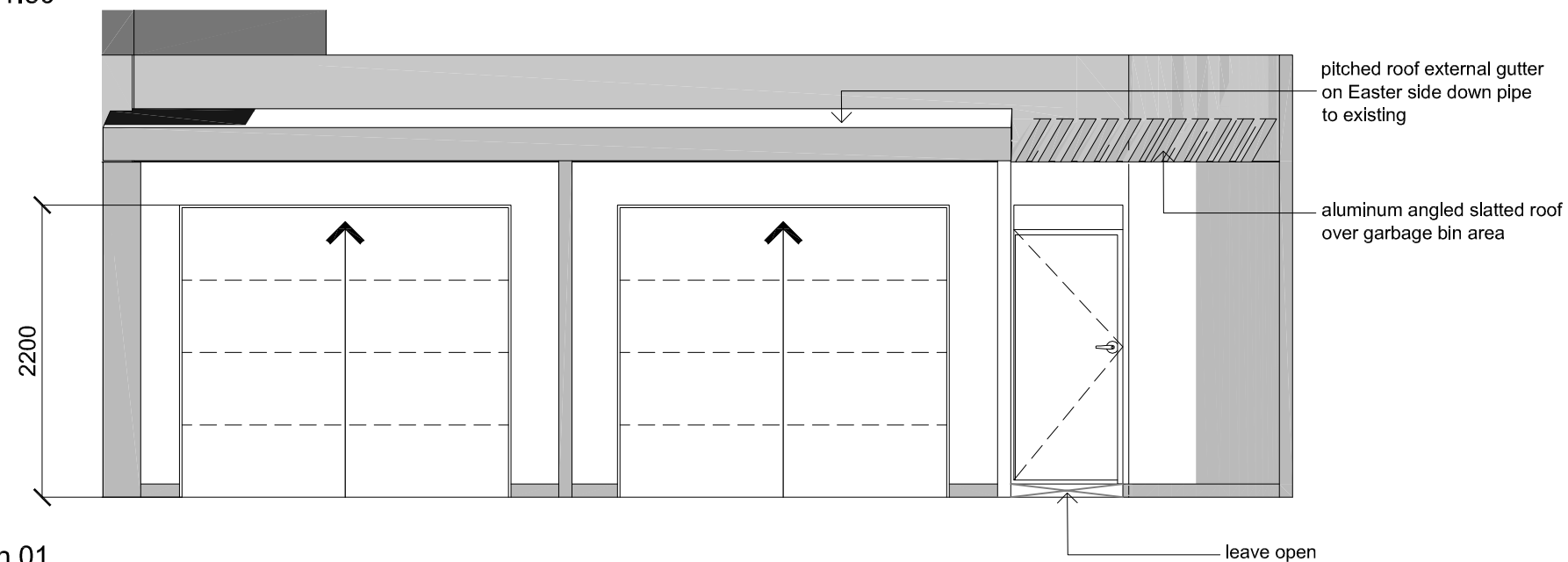
ELEVATION AA, BB, DD

'Nominated Architect Stephen Fayle'
DESIGN SUPPLIED BY: KH DESIGN GROUP

JOB No. 20005
WOODHOUSE & DANKS PTY LTD ARCHITECTS
Suite 207 Level 2, 20 Dale Street, Brookvale NSW 2100
T: (02) 9939 8810
E: admin@woodhousedanks.com.au
DWG. No. CD-44 a
REV jjo
SCALE 1:50 @A3:
DATE DEC 2021
CADD FILE E:\69 Evans Street, Freshwater\Drawings\2021.08.09



1 Elevation CC
1:50



2 Section 01
1:50

northern beaches council

THIS PLAN IS TO BE READ IN CONJUNCTION WITH THE CONDITIONS OF DEVELOPMENT CONSENT

DA2021/2588



GENERAL NOTES
1. CONTRACTORS MUST VERIFY ALL DIMENSIONS ON SITE PRIOR TO THE COMMENCEMENT OF ANY WORK OR THE PREPARATION OF SHOP DRAWINGS.
2. FIGURED DIMENSIONS TO BE USED IN PREFERENCE TO SCALED DIMENSIONS.
USE OF THESE DRAWINGS
The design and details shown on these drawings are applicable to this project only and may not be reproduced in whole or in part or be used for any other project or purpose without the written permission of Woodhouse & Danks Pty. Ltd. with whom copyright resides.

No. DATE REVISION OR ISSUE

DWN. CHK. No. DATE REVISION OR ISSUE

09.08.21 ISSUE
DWN. CHK. No. DATE REVISION OR ISSUE

DWN. CHK.

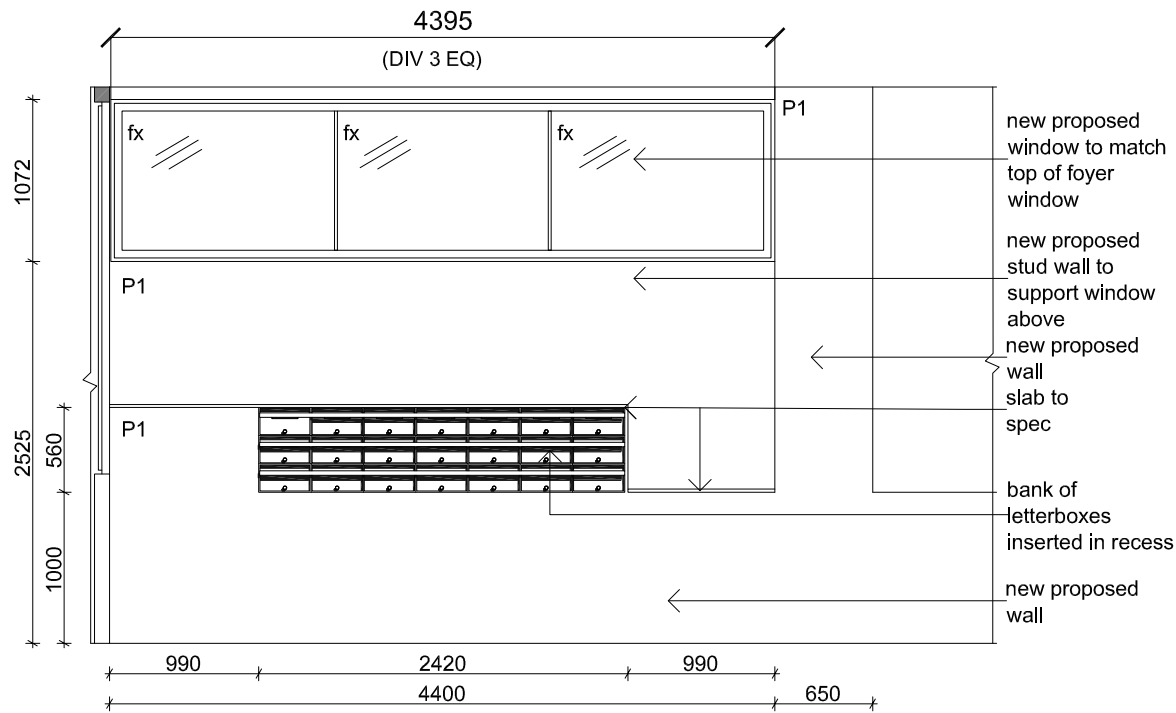
Proposed Alteration
69 Evans Street, Freshwater
NSW

ELEVATION CC, SECTION 01

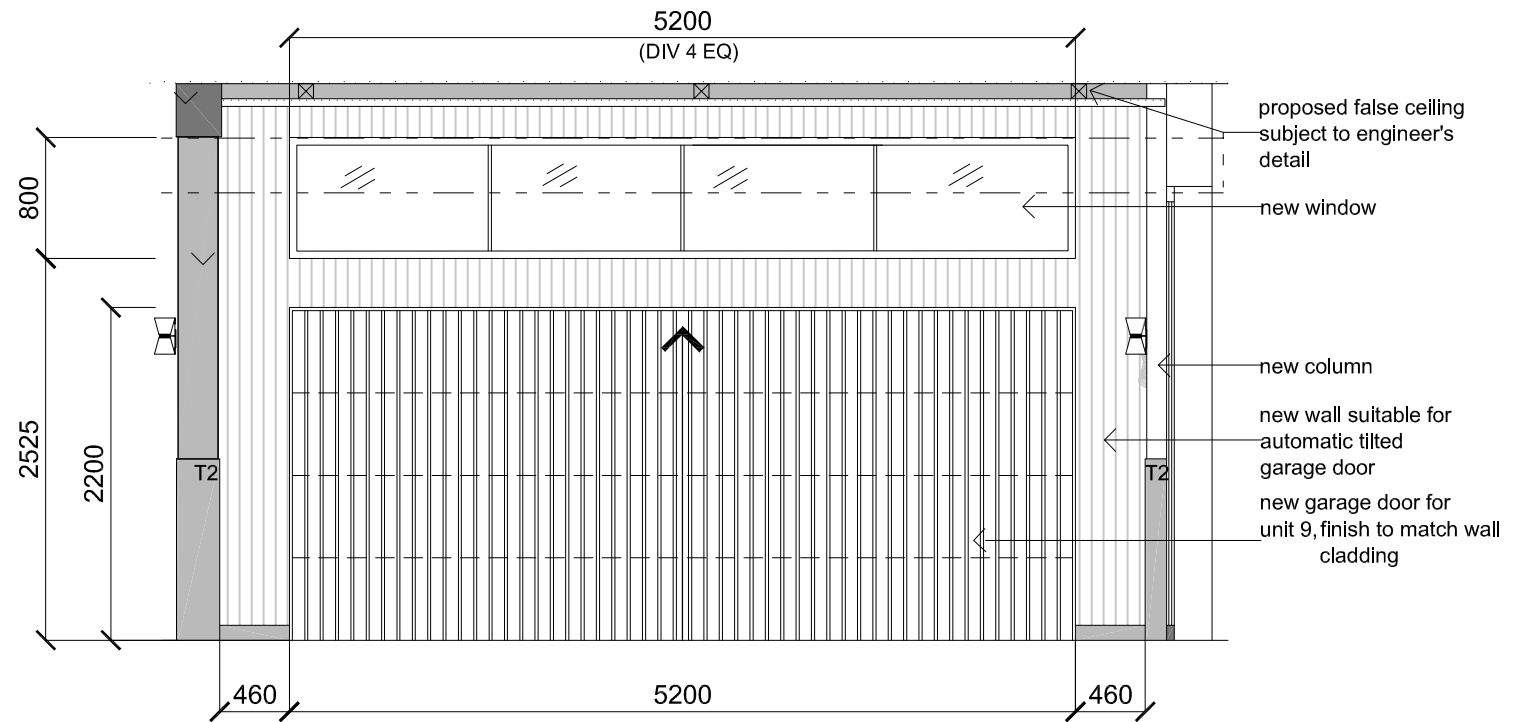
'Nominated Architect Stephen Fayle'
DESIGN SUPPLIED BY: KH DESIGN GROUP

WOODHOUSE & DANKS PTY LTD
ARCHITECTS
Suite 207 Level 2, 20 Dale Street, Brookvale NSW 2100
T: (02) 9939 8810
E: admin@woodhousedanks.com.au
ABN: 26 064 690 106
ARN: 3274

20005
JOB No.
DWG. No.
REV
CD-45 -
DRAWN
rjo
SCALE
1:50 @A3:
DATE
AUG 2021
CAD FILE
E:\69 Evans Street, Freshwater\Drawings\2021.08.09



BB Letterbox Elevation
1:50



CC No. 9 Garage Elevation
1:50

**THIS PLAN IS TO BE READ IN
CONJUNCTION WITH
THE CONDITIONS OF DEVELOPMENT
CONSENT**

DA2021/2588



GENERAL NOTES
1. CONTRACTORS MUST VERIFY ALL DIMENSIONS ON SITE PRIOR TO THE COMMENCEMENT OF ANY WORK OR THE PREPARATION OF SHOP DRAWINGS.
2. FIGURED DIMENSIONS TO BE USED IN PREFERENCE TO SCALED DIMENSIONS.
USE OF THESE DRAWINGS
The design and details shown on these drawings are applicable to this project only and may not be reproduced in whole or in part or be used for any other project or purpose without the written permission of Woodhouse & Danks Pty. Ltd. with whom copyright resides.

No. DATE REVISION OR ISSUE

DWN. CHK. No. DATE REVISION OR ISSUE

DWN. CHK. No. DATE REVISION OR ISSUE

DWN. CHK.

LETTER BOX BB, NO.9 GARAGE ELEVATION

Proposed Alteration
69 Evans Street , Freshwater
NSW

'Nominated Architect Stephen Fayle'
DESIGN SUPPLIED BY: KH DESIGN GROUP

WOODHOUSE & DANKS PTY LTD
ARCHITECTS
Suite 207 Level 2, 20 Dale Street, Brookvale NSW 2100
T: (02) 9939 8810
E: admin@woodhousedanks.com.au

JOB No.
20005
DWG. No.
CD-46
REV
rjo

SCALE
1:50 @A3:

DATE
AUG 2021
CAD FILE
E:\STEPHEN FAYLE PROJ\189 Evans st freshwater\Drawings