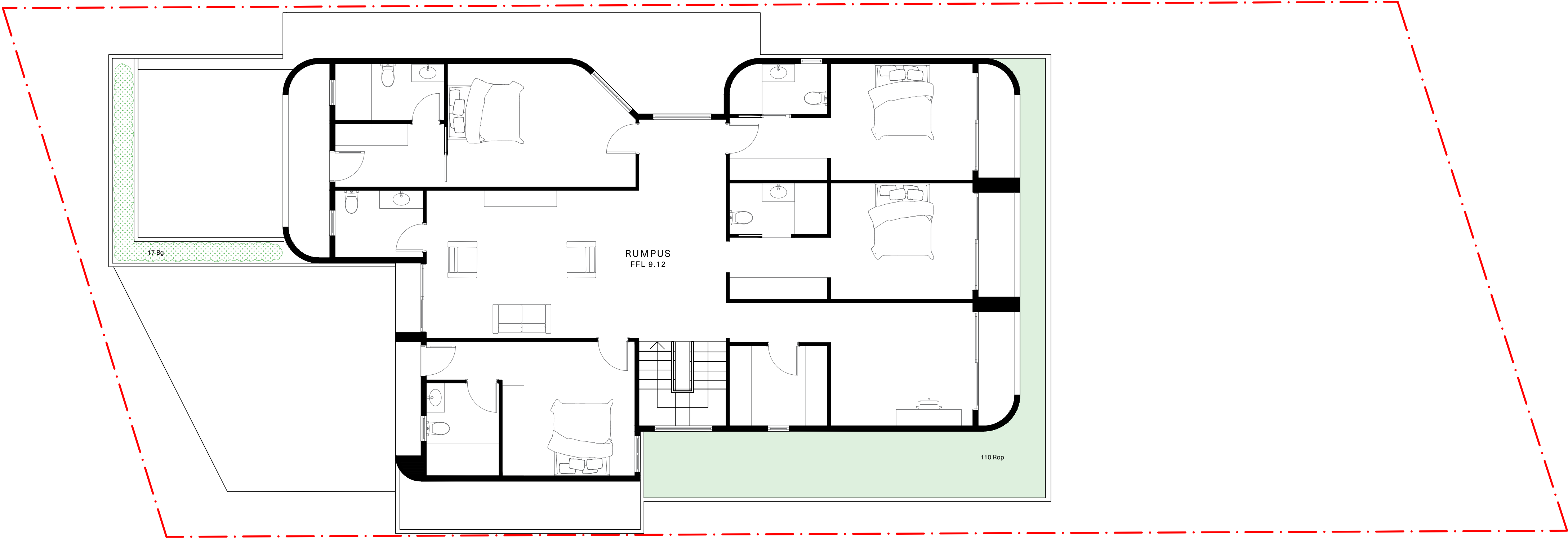


LANDSCAPE PLAN  
SCALE 1:75 @ A1



LEVEL 1 PLANTERS  
SCALE 1:75 @ A1

- LEGEND
- PROPOSED TREES
- EXISTING TREES TO BE RETAINED
- EXISTING TREES TO BE REMOVED WITH COUNCIL'S APPROVAL

AMENDMENTS

A - ISSUED	FOR DA	14.07.24
B - ISSUED	FOR DA	16.07.24
C - ISSUED	FOR DA	17.07.24
D - ISSUED	FOR DA	01.08.24
E - ISSUED	FOR DA	14.03.25
F - ISSUED	FOR DA	21.03.25

**STUDIO BOTANICA**

Sydney | Melbourne | Dubai

Studio Botanica Pty Ltd  
1/299 Belmont Street  
Alexandria NSW 2015 Australia  
+61 (0)460 006 000  
office@studiobotanica.com.au  
www.studiobotanica.com.au

PROJECT  
Anag NSW  
1142 Pittwater Road  
Collaroy NSW 2097

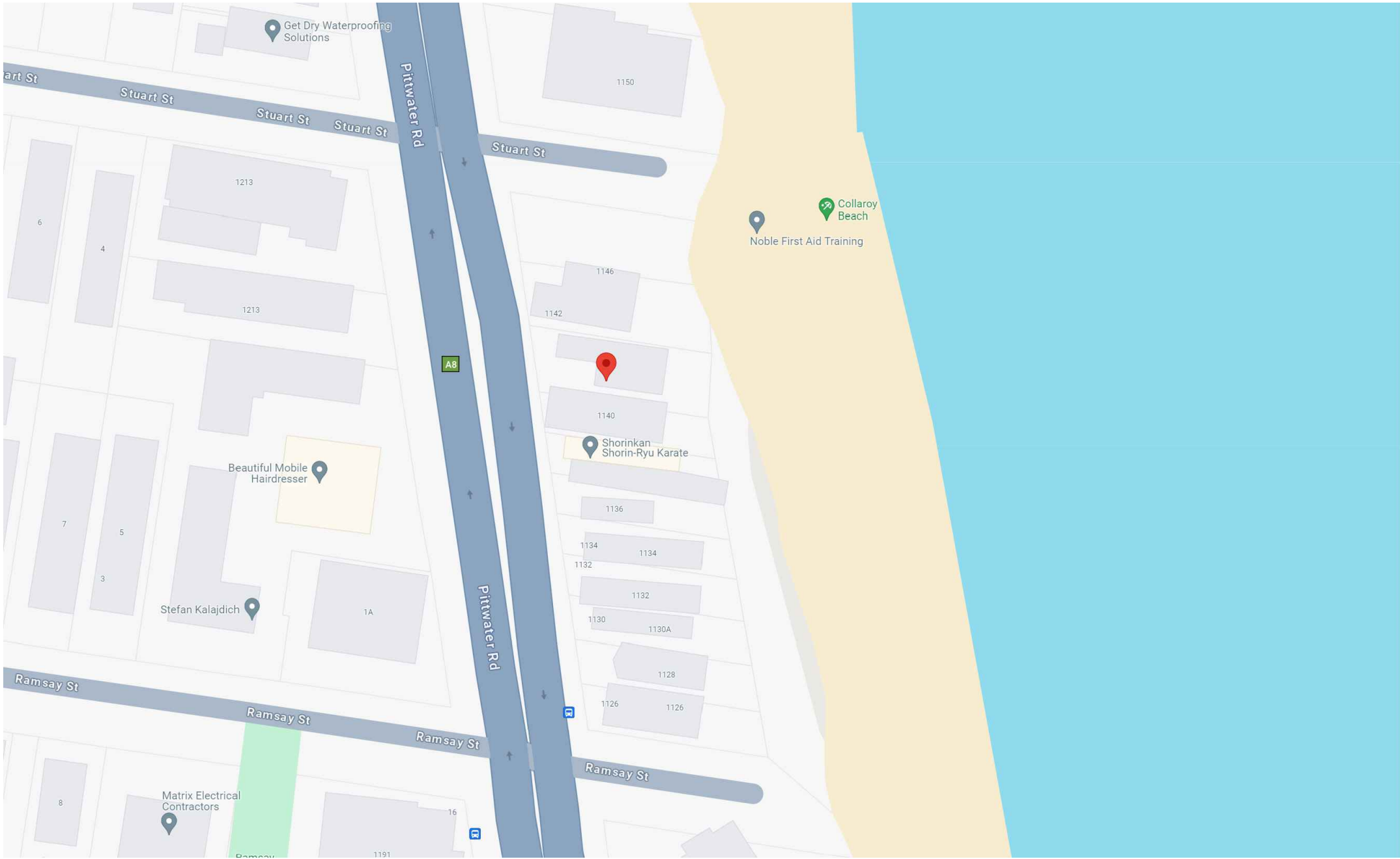
Architect  
Yan Honda Architects

Drawing  
LANDSCAPE PLAN

Scale	Drawn	Checked	Revision	Project No.	Drawing No.
NOTED	AB	AB	F	PR_1142	10

Studio Botanica must be present on-site for the positioning of all plants.  
Contact designer if discrepancies occur between landscape and consultants documents.  
Builder to check and verify all dimensions on site prior to construction.  
This drawing is copyright.





SITE LOCATION

NTS|GOOGLE MAPS

DRAWING SCHEDULE

PR_1142_01	COVER PAGE
PR_1142_10	LANDSCAPE PLAN

GENERAL NOTES

- NOT FOR CONSTRUCTION
- ALL LANDSCAPE DRAWINGS ARE TO BE READ IN CONJUNCTION WITH THE ARCHITECT'S AND ADDITIONAL CONSULTANT'S DRAWINGS, SPECIFICATIONS AND REPORTS
- ALL PUBLIC UTILITY SERVICES ARE TO BE LOCATED ON SITE BY THE CONTRACTOR PRIOR TO THE COMMENCEMENT OF WORKS. THE LOCATION, PRESENCE AND EXTENT OF SERVICES SHOWN ARE NOT GUARANTEED COMPLETE OR CORRECT
- PERFORM EXCAVATION IN THE VICINITY OF UNDERGROUND UTILITIES WITH CARE AND IF NECESSARY, BY HAND. THE CONTRACTOR BEARS FULL RESPONSIBILITY FOR THIS WORK AND DISRUPTION OR DAMAGE TO UTILITIES SHALL BE REPAIRED IMMEDIATELY AT NO EXPENSE TO THE OWNER
- NO TREES PROTECTED UNDER THE LOCAL COUNCIL'S TREE PRESERVATION ORDER ARE TO BE REMOVED UNLESS APPROVED BY DEVELOPMENT CONSENT OR PERMIT OBTAINED FROM COUNCIL
- ALL PAVING IS INDICATIVE, TO BE TO FUTURE SPECIFICATION, AND SET OUT ON SITE
- ALL WORK TO BE CARRIED OUT IN ACCORDANCE WITH THE LOCAL COUNCIL'S APPROVAL, STANDARDS AND CODES
- THE CONTRACTOR IS TO ENSURE THAT ALL THE WORKS ARE CARRIED OUT IN ACCORDANCE WITH THE WORK HEALTH AND SAFETY ACT
- STUDIO BOTANICA TO REVIEW PLANT MATERIALS AT SOURCE OR BY PHOTOGRAPHS PRIOR TO PURCHASE AND DELIVERY
- EXACT LOCATIONS OF NEW PLANT MATERIAL TO BE SETOUT AND APPROVED BY STUDIO BOTANICA ONSITE PRIOR TO INSTALLATION. STUDIO BOTANICA RESERVES THE RIGHT TO ADJUST PLANTS TO EXACT LOCATION ONSITE

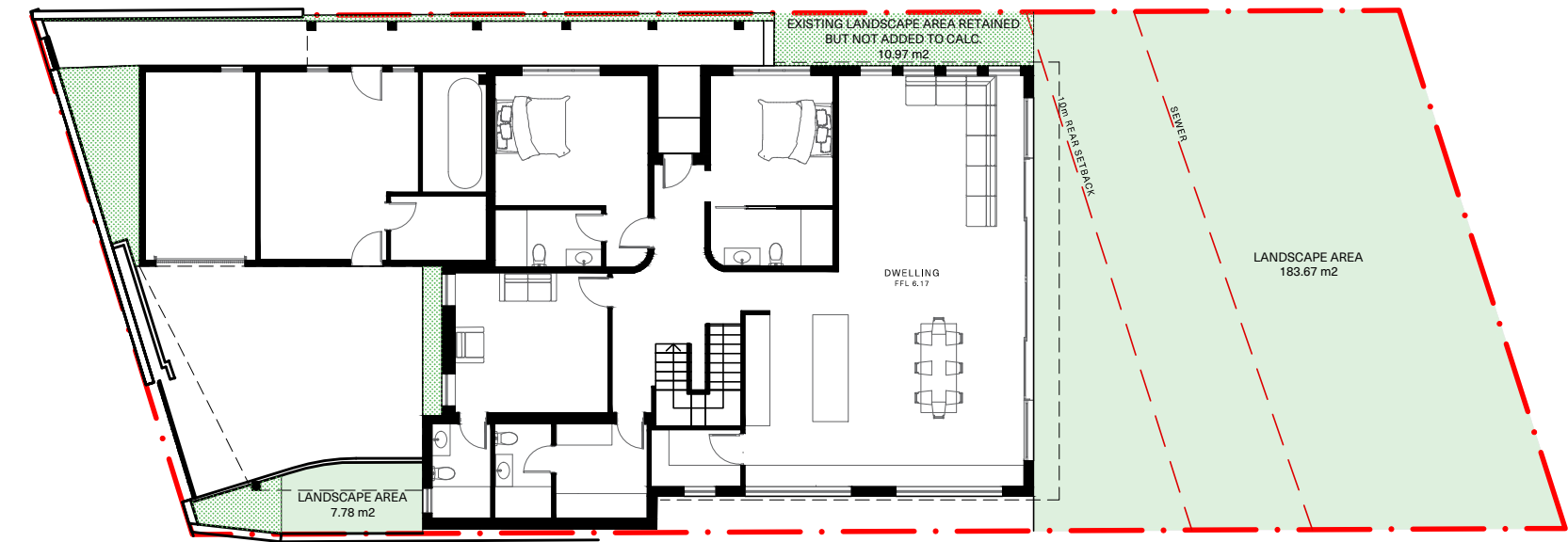
PLANT SCHEDULE

TREES						
CODE	BOTANIC NAME	COMMON NAME	QTY	POT SIZE	MATURE HEIGHT	COMMENTS
HF	Howea forsteriana	Kentia Palm	1	300L	2.5m CT	CT = Clean Trunk
HF	Howea forsteriana	Kentia Palm	1	300L	4m CT	CT = Clean Trunk
OE	Olea europaea	Olive Tree	2	400L	3m	
PA	Plumeria alba	Frangipani				Existing to be retained
SHRUBS AND PERRENIALS						
CODE	BOTANIC NAME	COMMON NAME	QTY	POT SIZE	MATURE HEIGHT	
Ab	Alyxia buxifolia	Sea Box	10	200mm	1m	Maintained
Am	Alocasia macrorrhiza	Giant Taro	2	300mm	2m	
Aw	Agave weberi	Weber's agave	6	300mm	1.2m	
Co	Cotyledon orbiculata 'Silver Waves'	Silver Waves	22	300mm	0.35m	
De	Dianella brevicaulis	Coast Flax-Lily	50	140mm	0.4-0.5m	
Lr	Ligularia reniformis	Tractor Seat	10	200mm	0.8m	
Ms	Miscanthus sinensis 'Adagio'	Maiden Grass	13	150mm	1.2m	
Ro	Raphiolepis indica 'Oriental Pearl'	Indian Hawthorne	14	200mm	0.8m	
Re	Raphis excelsa	Lady Palm	5	45L	2.5m	
Wf	Westringia fruticosa 'Jervis Gem'	Coastal Rosemary	19	200mm	0.6-1m	Maintained
GROUNDCOVERS & CLIMBERS						
CODE	BOTANIC NAME	COMMON NAME	QTY	POT SIZE	MATURE HEIGHT	
Bg	Bougainvillea bambino 'Sunrise'	Bougainvillea bambino 'Sunrise'	17	200mm	0.6m	Maintained Cascading
Dr	Dichondra repens	Kidney Weed	50	140mm	Groundcover	
Fp	Ficus pumila	Creeping Fig	22	140mm	Climber	
Rop	Rosmarinus officinalis 'Prostatu's'	Creeping Rosemary	154	140mm	Groundcover	
Ta	Trachelospermum asiaticum	Asiatic Jasmine	20	150mm	Groundcover	
MULCH						
Greenlife Mulch and Compost						

NOTES

- IF SPECIFIED POT SIZES ARE NOT READILY AVAILABLE, PLEASE CONTACT STUDIO BOTANICA TO CLARIFY SUBSTITUTE SIZES AND CHANGES TO QUANTITIES
- ALL MATURE TREES TO BE SOURCED AND SUPPLIED BY STUDIO BOTANICA PTY LTD
- THE PLANT SCHEDULE IS CALCULATED BASED OFF THE LANDSCAPE PLANS PROVIDED BY STUDIO BOTANICA. ADDITIONAL PLANTS OUTSIDE OF THIS SCHEDULE MAY BE REQUIRED TO REACH THE DESIRED PLANT DENSITIES ONSITE
- ALL PLANT MATERIAL TO BE SETOUT ONSITE BY STUDIO BOTANICA PRIOR TO INSTALLATION

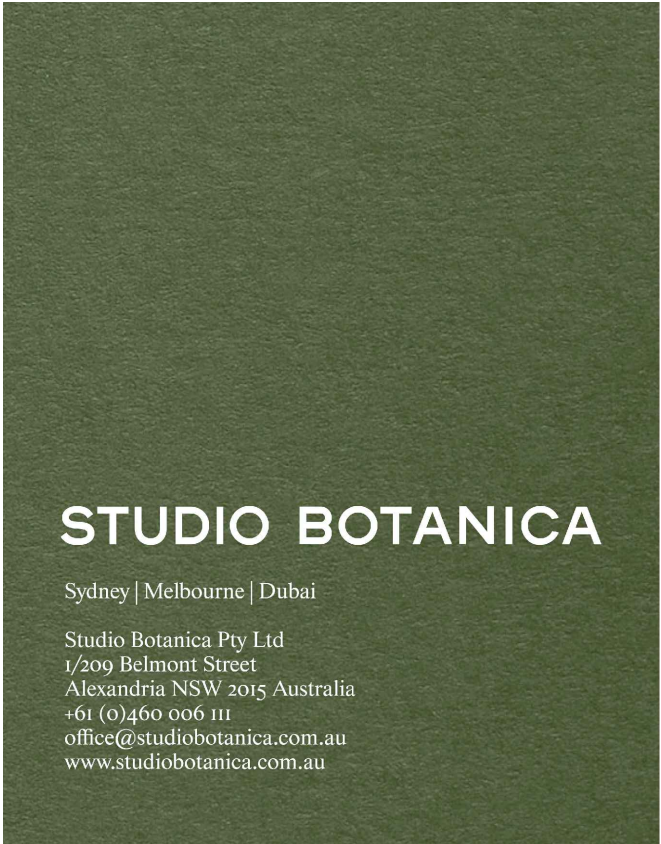
LANDSCAPE RATIO



Total Site Coverage Area	551.1	100%
Existing Landscape	198.09	35.94%
Min landscape area required	220.44	40.00%
Proposed Landscape (S4.55)	191.45	34.73%

AMENDMENTS

A - ISSUED	FOR DA	14.07.24
B - ISSUED	FOR DA	16.07.24
C - ISSUED	FOR DA	17.07.24
D - ISSUED	FOR DA	01.08.24
E - ISSUED	FOR DA	14.03.25
F - ISSUED	FOR DA	21.03.25



PROJECT  
Anag NSW  
1142 Pittwater Road  
Collaroy NSW 2097

Architect  
Yan Honda Architects

Drawing  
COVER PAGE

Scale	Drawn	Checked	Revision	Project No.	Drawing No.
	AB	AB	F	PR_1142	01

Studio Botanica must be present on site for the positioning of all plants.  
Contact designer if discrepancies occur between landscape and consultants documents.  
Builder to check and verify all dimensions on site prior to construction.  
This drawing is copyright.