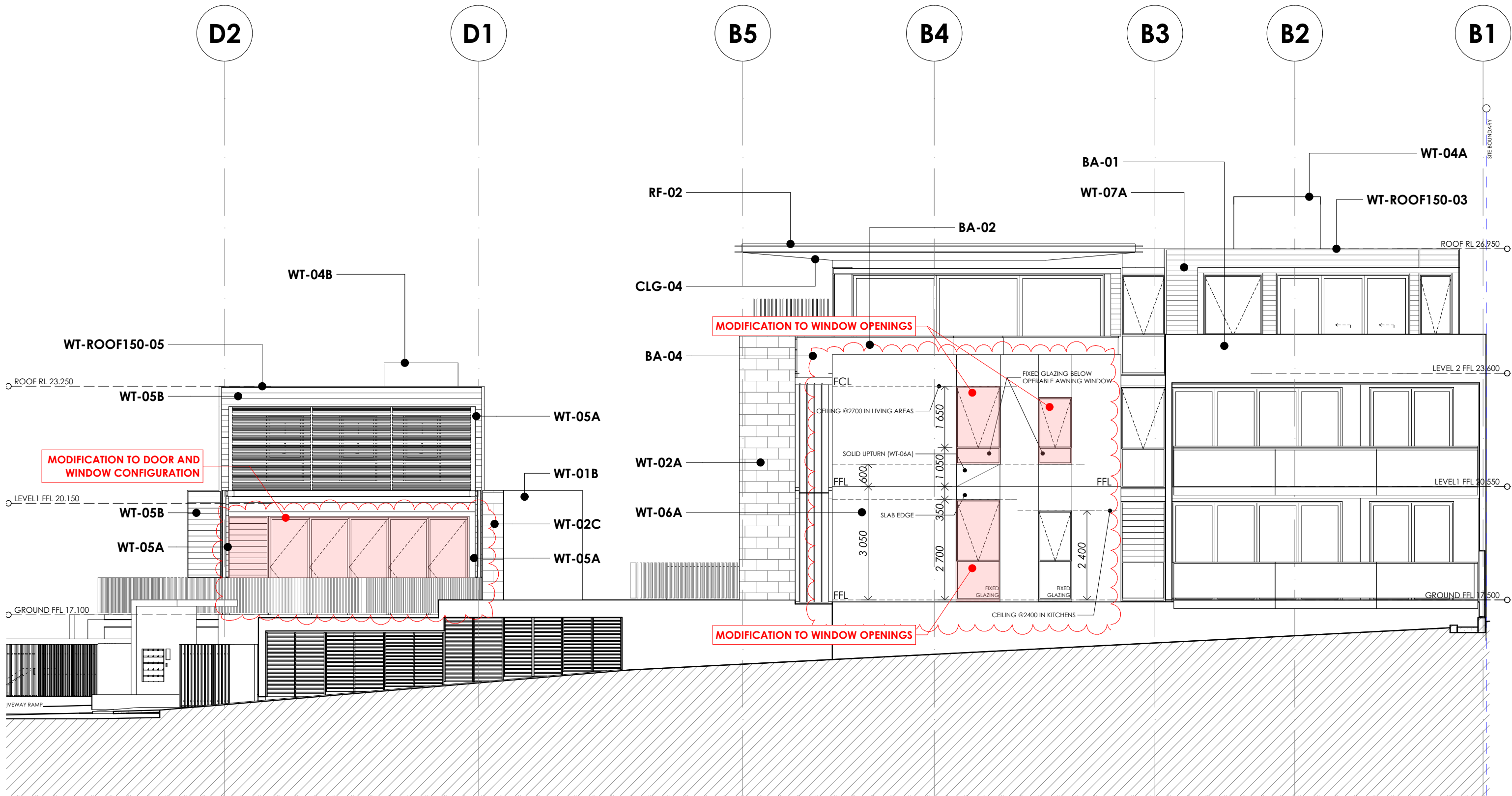


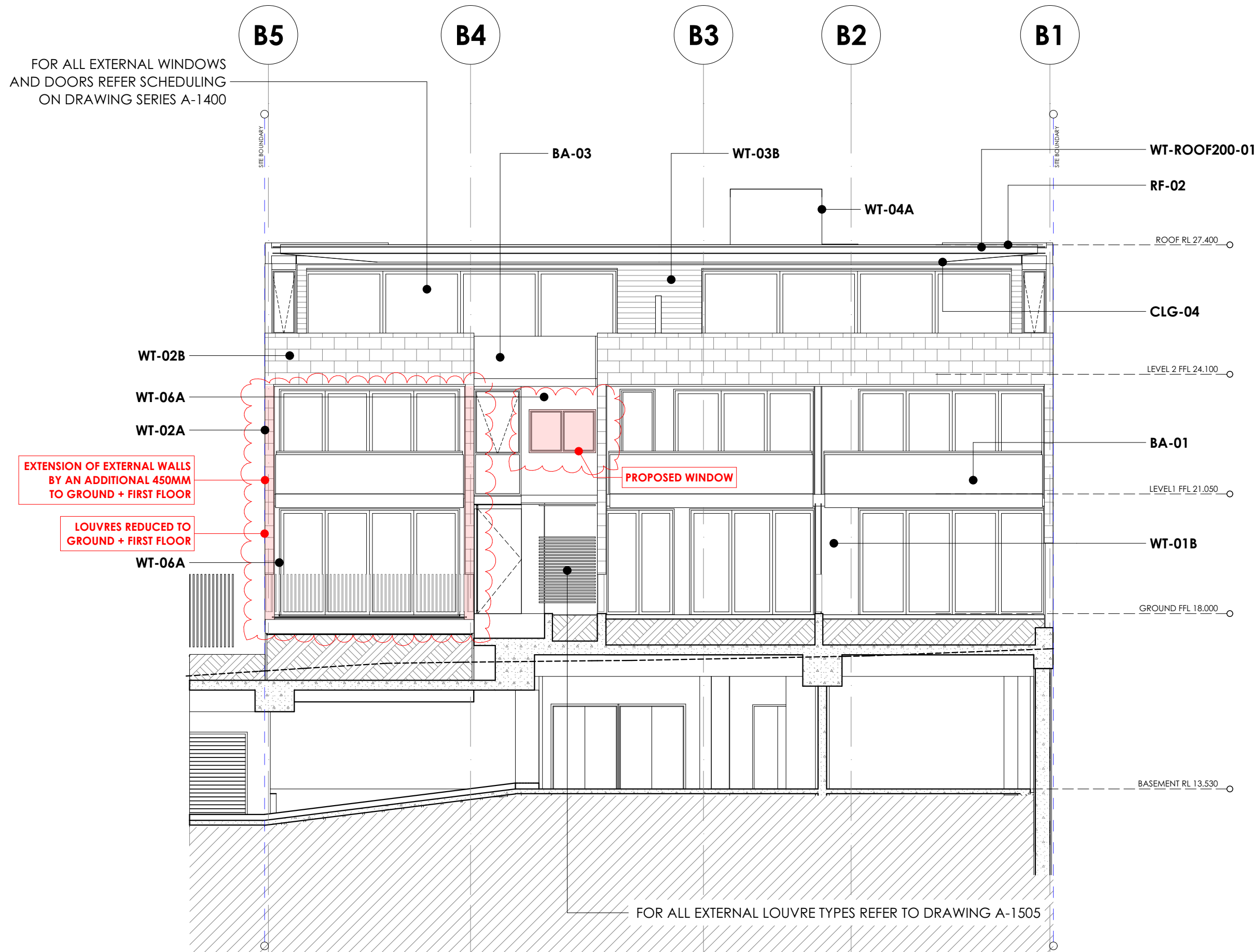
MAMORA

SECTION 96AA



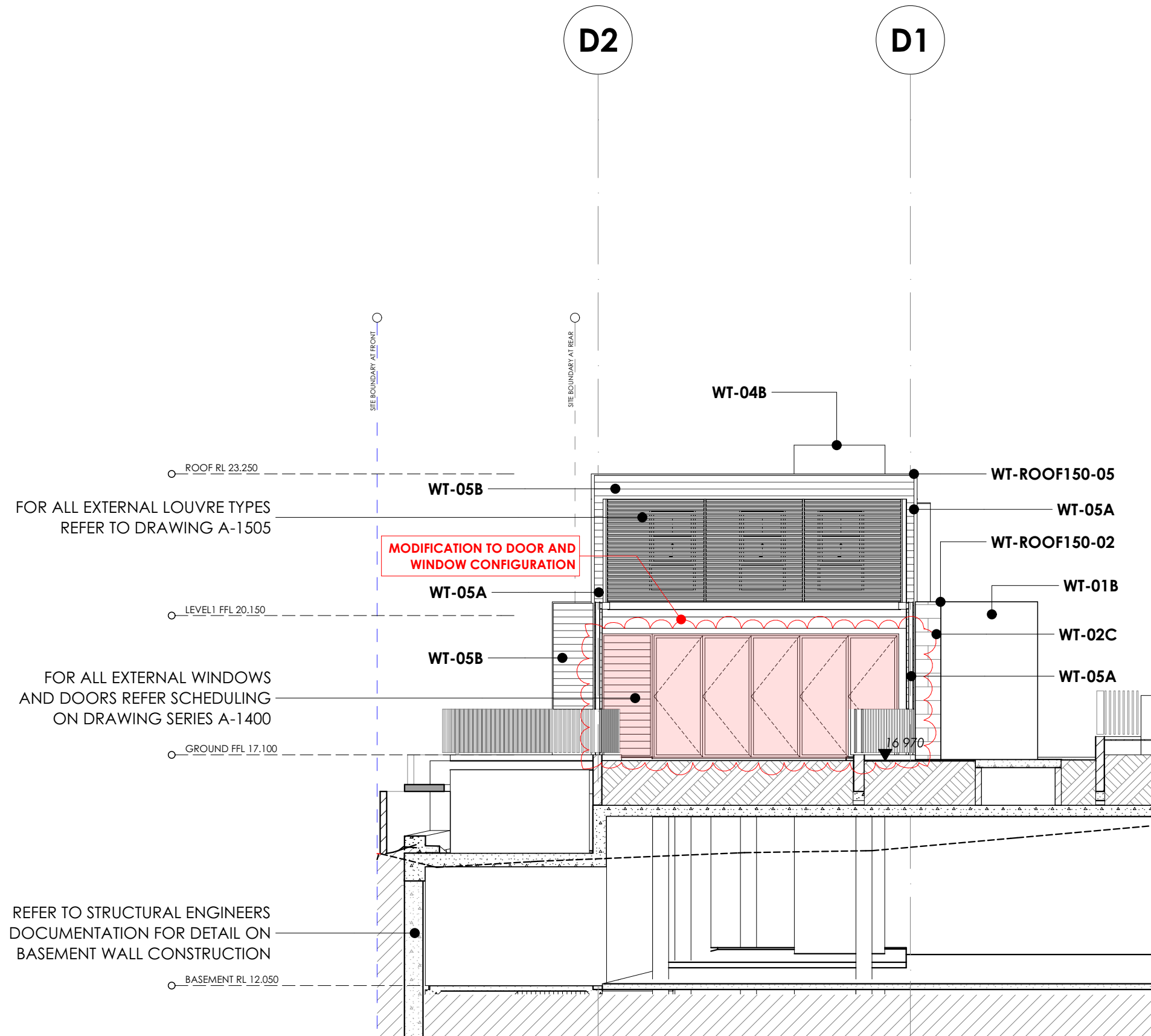
MAMORA

SECTION 96AA



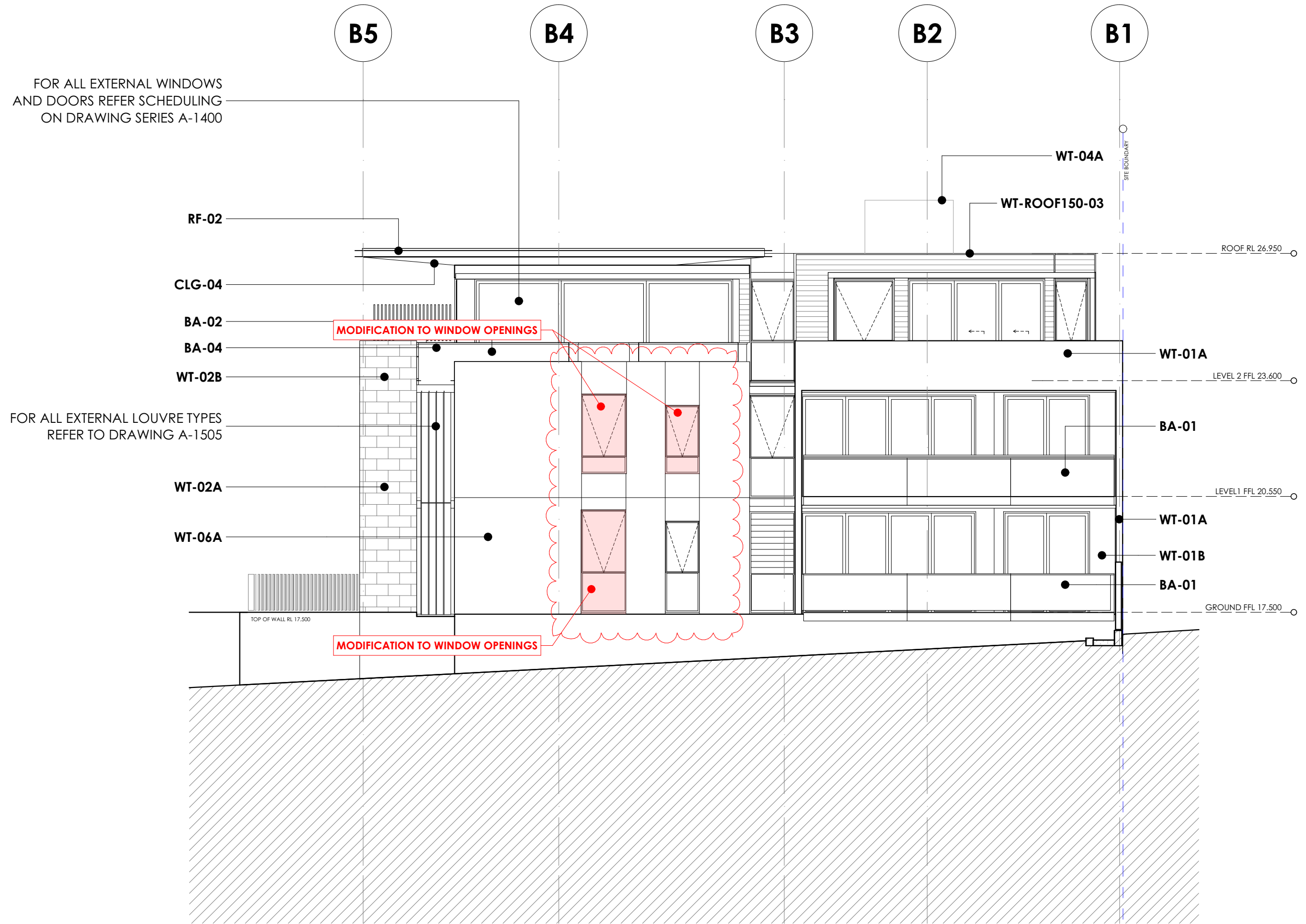
MAMORA

SECTION 96AA



MAMORA

SECTION 96AA



MAMORA

SECTION 96AA

NOTES
This drawing is issued upon the condition it is not copied, reproduced, retained or disclosed to any unauthorised person either wholly or in part without prior consent in writing of Benson McCormack Architects.
DO NOT SCALE DRAWINGS

REV A
DATE DEC 15
ISSUE S96AA SUBMITTED TO COUNCIL FOR ADDITIONAL/MODIFICATION OF WINDOWS

CLIENT
MOOREGATE PROPERTY
Suite 1, 38 East Esplanade
Manly NSW 2095

PROJECT DETAILS
MAMORA
18 Mamora Street Freshwater
NSW 2096



SCALE
1:100 @ A3

PROJECT NO.
1353A

DRAWING
BUILDING C - NORTH
ELEVATION

DRAWING NO.
A-0207

ISSUE
A

ARCHITECT
benSON mCCORMACK
arch: 74 129 130 285
studio 5, 505 balmain rd lilyfield NSW 2040
p: 61 2 9818 0777 f: 61 2 9818 0778
nom. arch - david benSON 7285



MAMORA

SECTION 96AA

NOTES
This drawing is issued upon the condition it is not copied, reproduced, retained or disclosed to any unauthorised person either wholly or in part without prior consent in writing of benson mccormack architects.
DO NOT SCALE DRAWINGS

REV	DATE	ISSUE
A	DEC 15	S96AA SUBMITTED TO COUNCIL FOR ADDITIONAL/MODIFICATION OF WINDOWS

CLIENT
MOOREGATE PROPERTY
Suite 1, 38 East Esplanade
Manly NSW 2095

PROJECT DETAILS
MAMORA
18 Mamora Street Freshwater
NSW 2096



SCALE
1:200 @ A3

PROJECT NO.
1353A
DRAWING
SECTION A

DRAWING NO.
A-0221
ISSUE
A

ARCHITECT
benson mccormack
abn: 74 129 130 285
studio 5, 505 balmain rd lilyfield NSW 2040
p: 61 2 9818 0777 f: 61 2 9818 0778
nom. arch - david benson 7285

