



SOURCE: NEARMAP

NARRABEEN NORTH PUBLIC SCHOOL

6 NAMONA STREET, NORTH NARRABEEN NSW 2101
LOT 3, D.P.10/8621

SHEET LIST- NARRABEEN NORTH PUBLIC SCHOOL - DA				
SHEET NUMBER	SHEET NAME	REVISION	REVISION DATE	REVISION DESCRIPTION
0000 - GENERAL & SITE INFORMATION				
DA-P-0101	COVER SHEET, LOCATION PLAN & DRAWING LIST	B	23/08/2022	DA SUBMISSION
DA-P-0200	SITE ANALYSIS	A	18/08/2022	DA SUBMISSION
DA-P-0210	PHOTOMONTAGE - NEW ADMIN & HALL	A	18/08/2022	DA SUBMISSION
DA-P-0220	MATERIALS BOARD - NEW ADMIN & HALL	A	18/08/2022	DA SUBMISSION
DA-P-0302	3D SITE TOPOGRAPHY HEIGHT PLANE	A	18/08/2022	DA SUBMISSION
DA-P-0303	3D SITE TOPOGRAPHY HEIGHT PLANE - NEW ADMIN & HALL	A	18/08/2022	DA SUBMISSION
DA-P-0521	NEW SITE PLAN - SCHOOL - GROUND FLOOR	B	23/08/2022	DA SUBMISSION
DA-P-0522	NEW SITE PLAN - SCHOOL - LEVEL 01	B	23/08/2022	DA SUBMISSION
DA-P-0523	NEW SITE PLAN - SCHOOL - ROOF	B	23/08/2022	DA SUBMISSION
DA-P-0600	SHADOW DIAGRAMS	A	18/08/2022	DA SUBMISSION
1000 - GA PLANS				
DA-P-1040	NEW HALL & ADMIN - GROUND FLOOR	A	18/08/2022	DA SUBMISSION
DA-P-1041	NEW HALL & ADMIN - LEVEL 1	B	23/08/2022	DA SUBMISSION
DA-P-1042	NEW HALL & ADMIN - ROOF PLAN	B	23/08/2022	DA SUBMISSION
3000 - ELEVATIONS & SECTIONS				
DA-P-3001	NEW ADMIN HALL - SITE ELEVATIONS	A	18/08/2022	DA SUBMISSION
DA-P-3002	NEW GLS HUB - SITE ELEVATIONS	A	18/08/2022	DA SUBMISSION
DA-P-3040	NEW ADMIN & HALL - GA ELEVATIONS	A	18/08/2022	DA SUBMISSION
DA-P-3041	NEW HALL & ADMIN - GA ELEVATIONS	B	23/08/2022	DA SUBMISSION
DA-P-3042	NEW HALL & ADMIN - GA SECTIONS	A	18/08/2022	DA SUBMISSION

DISCLAIMER.
This document may not be secure, may be corrupted in transmission or due to software incompatibility and/or may be amended or altered by third parties after leaving DesignInc Sydney Pty Ltd's possession. DesignInc is not responsible for and accepts no liability for such matters.
Subject only to any conflicting provision within any prior binding agreement by DesignInc Sydney Pty Ltd (such agreement may also contain additional conditions relating to this document and its use):

- The content of this document is confidential and copyright in it belongs to DesignInc Sydney Pty Ltd. The content is permitted only to be opened, read and used by the addressee.
- Users of this document must carry out all relevant investigations and must examine, take advice as required and satisfy themselves concerning the content, correctness and sufficiency of the attachment and its contents for their purposes.
- To the extent permitted by law, all conditions and warranties concerning this document or any use to which they may be put (whether as to quality, outcome, fitness, care, skill or otherwise) whether express or implied by statute, common law, equity, trade, custom or usage or otherwise, are expressly excluded.
- Any person using or relaying document releases & indemnifies and will keep indemnified, DesignInc Sydney Pty Ltd against all claims, liabilities, loss, costs and expenses arising directly or indirectly out of or in connection with such use or reliance including without limitation, any misrepresentation, error or defect in this document.
- Contractors to use Architectural drawings for set out. Contractors to check and verify all dimensions on site prior to construction / fabrication. Figured dimensions take precedence over scaled dimensions.
- Any discrepancies should be immediately referred to the Architect. All work to comply with N.C.C. statutory authorities and relevant Australian Standards.
- Refer also to the Model Disclaimer on the Cover Sheet.

No	DATE	REVISIONS	BY
A	18/08/2022	DA SUBMISSION	JO
B	23/08/2022	DA SUBMISSION	JO

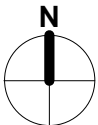
ARCHITECT
DesignInc
Designinc Sydney Pty Ltd
Level 14, 85 Castlereagh Street
Sydney NSW 2000 Australia
+61 2 8905 7100
sydney@designinc.com.au

Nominated Architects
Ian Armstrong 7260 | Cathryn Drew-Bredin 7269 | Richard Does 8126 | Mary Anne McGirr 10846



PROJECT
NARRABEEN EDUCATION PRECINCT
NAMONA ST, NORTH NARRABEEN NSW 2101

DETAILS		
DRAWN	JO	SCALE
CHECKED	RF	
APPROVED	<APPROVER>	@ A1



TITLE
COVER SHEET, LOCATION PLAN & DRAWING LIST

DRAWING NUMBER	REVISION
DA-P-0101	B



VIEW FROM ENTRY PATH TO NEW ADMIN, HALL & COLA

DISCLAIMER.
This document may not be secure, may be corrupted in transmission or due to software incompatibility and/or may be amended or altered by third parties after leaving DesignInc Sydney Pty Ltd's possession. DesignInc is not responsible for and accepts no liability for such matters.
Subject only to any conflicting provision within any prior binding agreement by DesignInc Sydney Pty Ltd (such agreement may also contain additional conditions relating to this document and its use).

- The content of this document is confidential and copyright in it belongs to DesignInc Sydney Pty Ltd. The content is permitted only to be opened, read and used by the addressee.
- Users of this document must carry out all relevant investigations and must examine, take advice as required and satisfy themselves concerning the content, correctness and sufficiency of the attachment and its contents for their purposes.
- To the extent permitted by law, all conditions and warranties concerning this document or any use to which they may be put (whether as to quality, outcome, fitness, care, skill or otherwise) whether express or implied by statute, common law, equity, trade, custom or usage or otherwise, are expressly excluded.
- Any person using or relaying document releases & indemnifies and will keep indemnified, DesignInc Sydney Pty Ltd against all claims, liabilities, loss, costs and expenses arising directly or indirectly out of or in connection with such use or reliance including without limitation, any misrepresentation, error or defect in this document.
- Contractors to use Architectural drawings for set out. Contractors to check and verify all dimensions on site prior to construction / fabrication. Figured dimensions take precedence over scaled dimensions.
- Any discrepancies should be immediately referred to the Architect. All work to comply with N.C.C. statutory authorities and relevant Australian Standards.
- Refer also to the Model Disclaimer on the Cover Sheet.

No	DATE	REVISIONS	BY
A	18/08/2022	DA SUBMISSION	JO

ARCHITECT
DesignInc
Designinc Sydney Pty Ltd
Level 14, 85 Castlereagh Street
Sydney NSW 2000 Australia
+61 2 8905 7100
sydney@designinc.com.au

Nominated Architects
Ian Armstrong 7260 | Cathryn Drew-Bredin 7269 | Richard Does 8126 | Mary Anne McGirr 10946

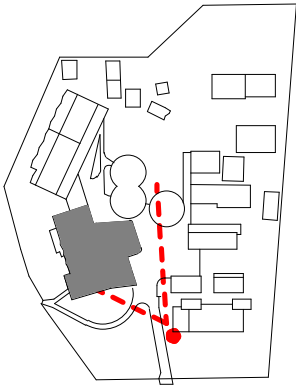
CLIENT
 **Education**

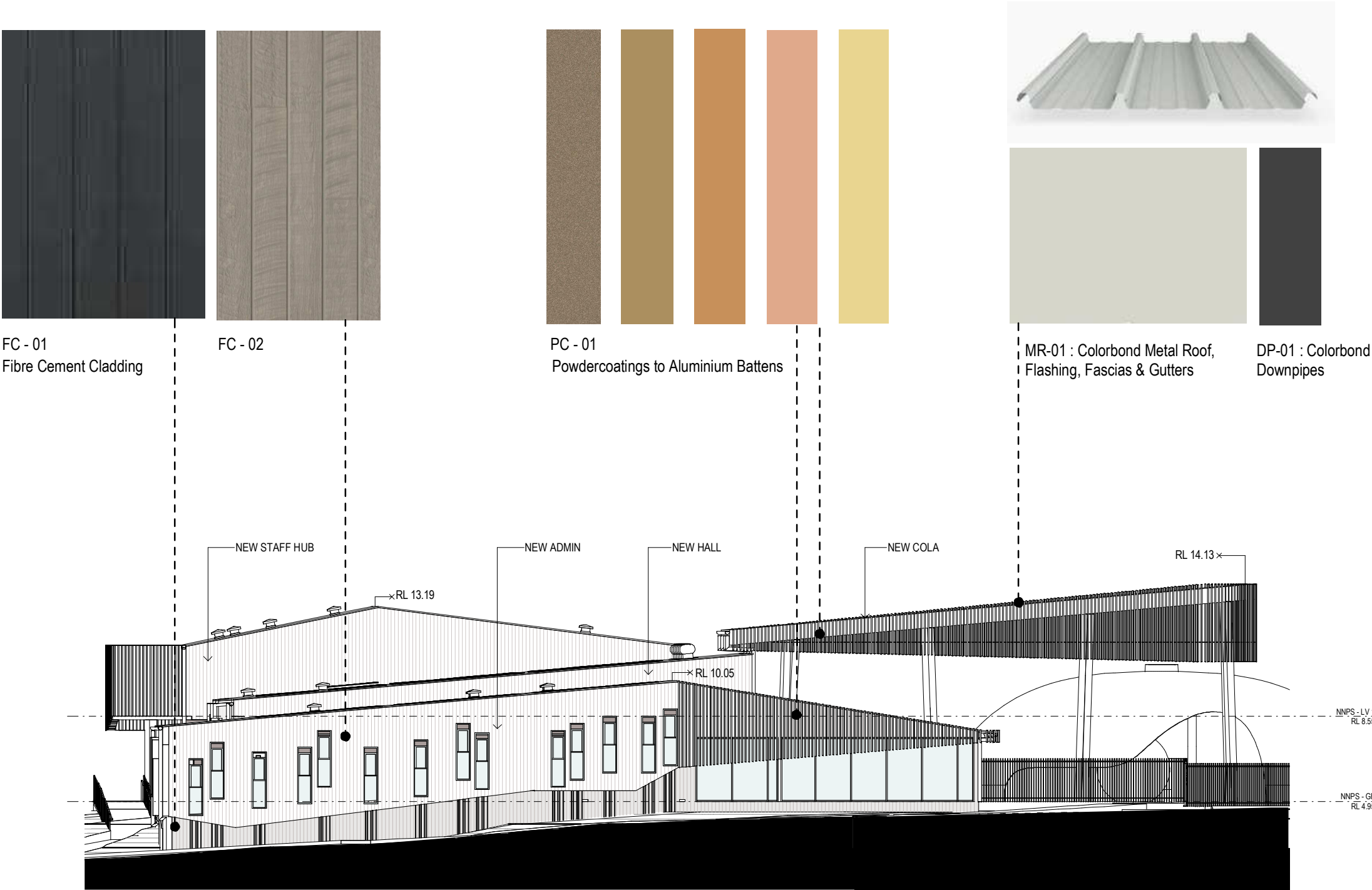
PROJECT
NARRABEEN EDUCATION PRECINCT
NAMONA ST, NORTH NARRABEEN NSW 2101

DETAILS
DRAWN
CHECKED
APPROVED
JO
RF
Approver
SCALE
@ A1

TITLE
PHOTOMONTAGE - NEW ADMIN & HALL

DRAWING NUMBER
DA-P-0210
REVISION
A





DISCLAIMER.

This document may not be secure, may be corrupted in transmission or due to software incompatibility and/or may be amended or altered by third parties after leaving DesignInc Sydney Pty Ltd's possession. DesignInc is not responsible for and accepts no liability for such matters.

Subject only to any conflicting provision within any prior binding agreement by DesignInc Sydney Pty Ltd (such agreement may also contain additional conditions relating to this document and its use):

- The content of this document is confidential and copyright in it belongs to DesignInc Sydney Pty Ltd. The content is permitted only to be opened, read and used by the addressee.
- Users of this document must carry out all relevant investigations and must examine, take advice as required and satisfy themselves concerning the content, correctness and sufficiency of the attachment and its contents for their purposes.
- To the extent permitted by law, all conditions and warranties concerning this document or any use to which they may be put (whether as to quality, outcome, fitness, care, skill or otherwise) whether express or implied by statute, common law, equity, trade, custom or usage or otherwise, are expressly excluded.
- Any person using or relaying document releases & indemnifies and will keep indemnified, DesignInc Sydney Pty Ltd against all claims, liabilities, loss, costs and expenses arising directly or indirectly out of or in connection with such use or reliance including without limitation, any misrepresentation, error or defect in this document.
- Contractors to use Architectural drawings for set out. Contractors to check and verify all dimensions on site prior to construction / fabrication. Figured dimensions take precedence over scaled dimensions.
- Any discrepancies should be immediately referred to the Architect. All work to comply with N.C.C. statutory authorities and relevant Australian Standards.
- Refer also to the Model Disclaimer on the Cover Sheet.

No	DATE	REVISIONS	BY
A	18/08/2022	DA SUBMISSION	JO

ARCHITECT

DesignInc

DesignInc Sydney Pty Ltd
Level 14, 85 Castlereagh Street
Sydney NSW 2000 Australia
+61 2 8905 7100
sydney@designinc.com.au

Nominated Architects

Ian Armstrong 7260 | Cathryn Drew-Bredin 7269 | Richard Does 8126 | Mary Anne McGirr 10946

CLIENT

 **Education**

PROJECT

NARRABEEN EDUCATION PRECINCT
NAMONA ST, NORTH NARRABEEN NSW 2101

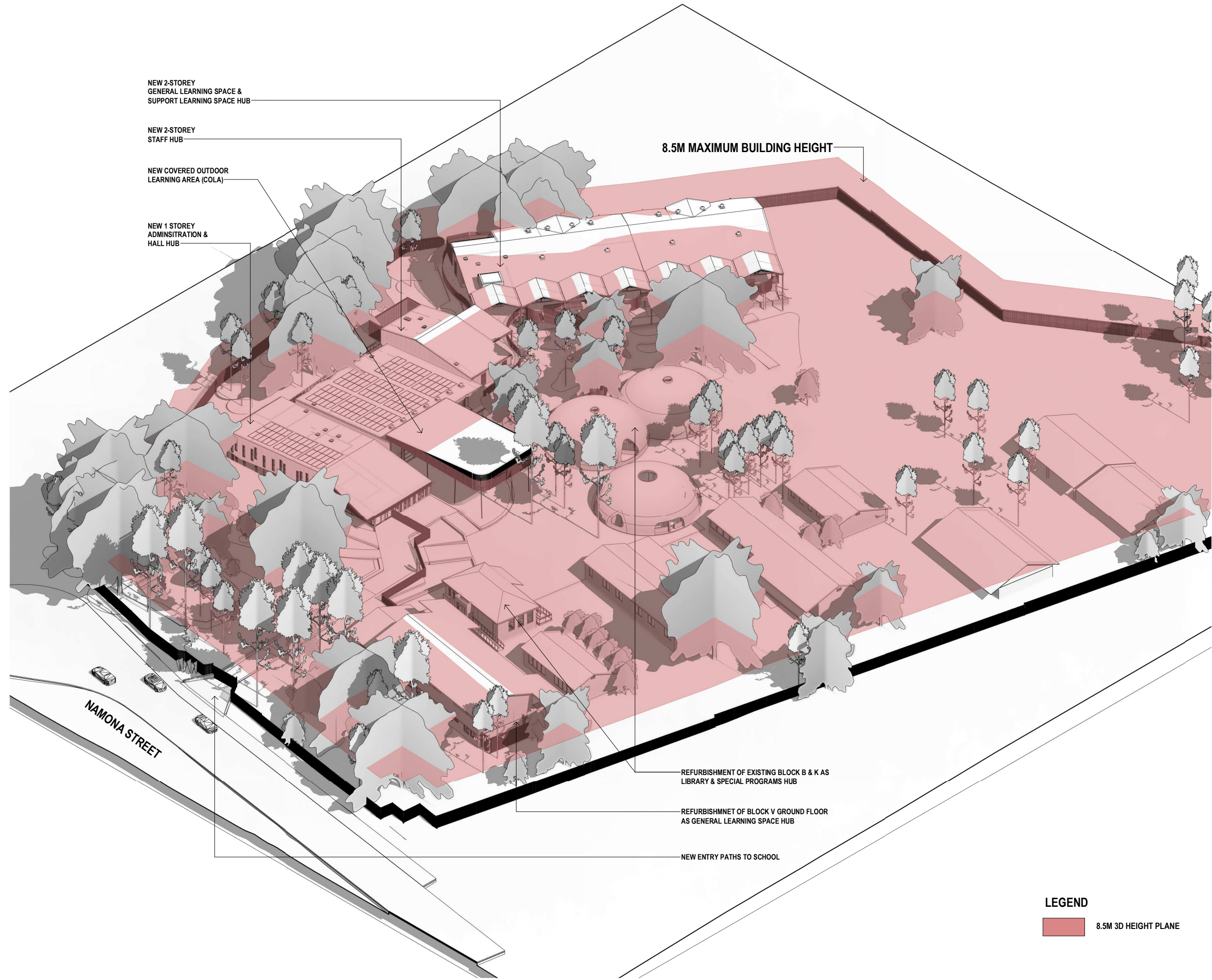
DETAILS

DRAWN	JO	SCALE
CHECKED	RF	
APPROVED	Approver	1:100 @ A1

TITLE

MATERIALS BOARD - NEW ADMIN & HALL

DRAWING NUMBER	REVISION
DA-P-0220	A



DISCLAIMER.

This document may not be secure, may be corrupted in transmission or due to software incompatibility and/or may be amended or altered by third parties after leaving DesignInc Sydney Pty Ltd's possession. DesignInc is not responsible for and accepts no liability for such matters.

Subject only to any conflicting provision within any prior binding agreement by DesignInc Sydney Pty Ltd (such agreement may also contain additional conditions relating to this document and its use):

- The content of this document is confidential and copyright in it belongs to DesignInc Sydney Pty Ltd. The content is permitted only to be opened, read and used by the addressee.
- Users of this document must carry out all relevant investigations and must examine, take advice as required and satisfy themselves concerning the content, correctness and sufficiency of the attachment and its contents for their purposes.
- To the extent permitted by law, all conditions and warranties concerning this document or any use to which they may be put (whether as to quality, outcome, fitness, care, skill or otherwise) whether express or implied by statute, common law, equity, trade, custom or usage or otherwise, are expressly excluded.
- Any person using or relying on document releases & indemnifies and will keep indemnified, DesignInc Sydney Pty Ltd against all claims, liabilities, loss, costs and expenses arising directly or indirectly out of or in connection with such use or reliance including without limitation, any misrepresentation, error or defect in this document.
- Contractors to use Architectural drawings for set out. Contractors to check and verify all dimensions on site prior to construction / fabrication. Figured dimensions take precedence over scaled dimensions.
- Any discrepancies should be immediately referred to the Architect. All work to comply with N.C.C. statutory authorities and relevant Australian Standards.
- Refer also to the Model Disclaimer on the Cover Sheet.

No	DATE	REVISIONS	BY
A	18/08/2022	DA SUBMISSION	JO

ARCHITECT

DesignInc

DesignInc Sydney Pty Ltd
Level 14, 85 Castlereagh Street
Sydney NSW 2000 Australia
+61 2 8905 7100
sydney@designinc.com.au

Nominated Architects

Ian Armstrong 7260 | Cathryn Drew-Bredin 7269 | Richard Does 8126 | Mary Anne McGirr 10946

CLIENT



PROJECT

NARRABEEN EDUCATION PRECINCT
NAMONA ST, NORTH NARRABEEN NSW 2101

DETAILS

DRAWN	JO	SCALE
CHECKED	RF	1:200 @ A1
APPROVED	Approver	

TITLE

3D SITE TOPOGRAPHY HEIGHT PLANE

DRAWING NUMBER

DA-P-0302

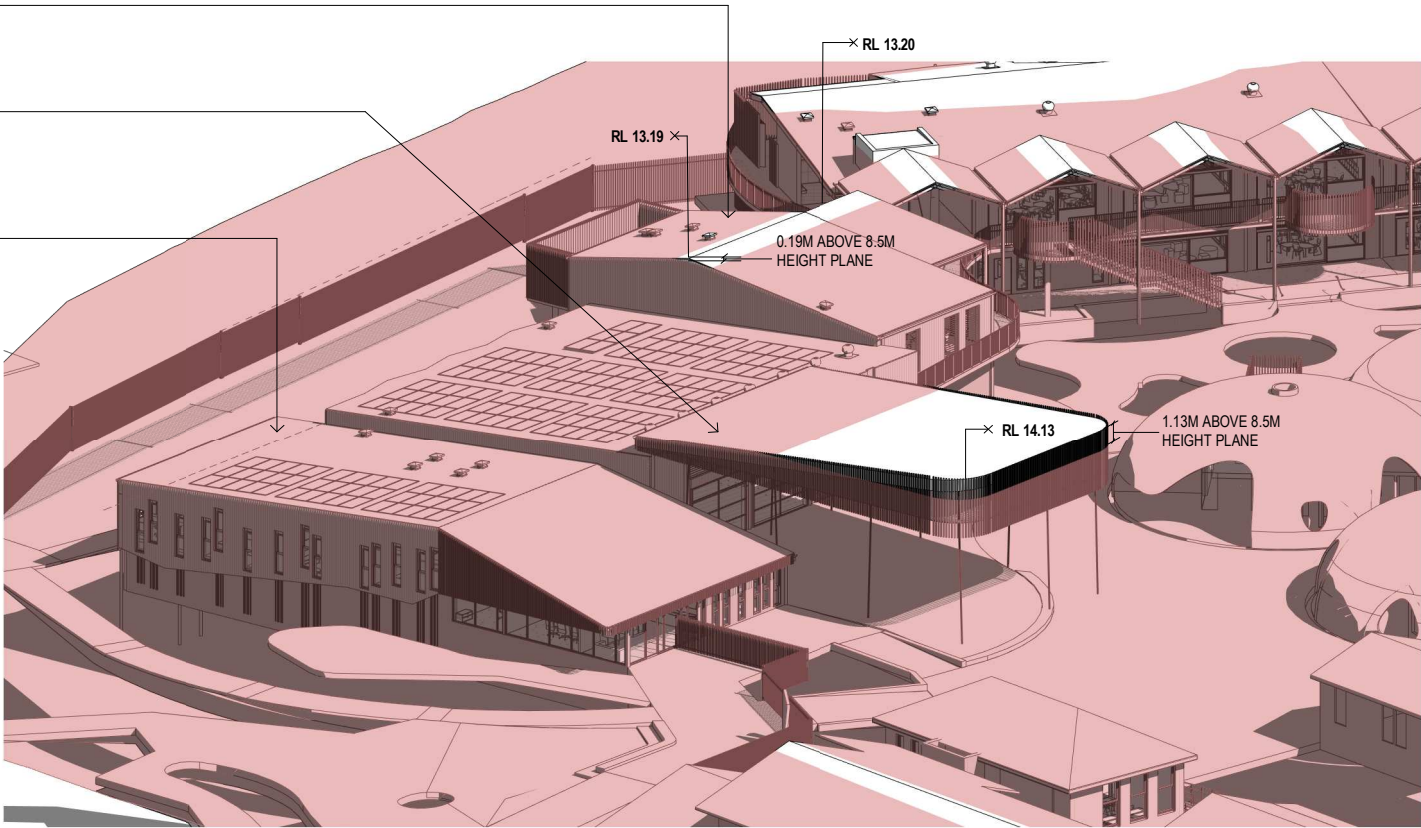
REVISION

A

NEW 2-STOREY
STAFF HUB

NEW COVERED OUTDOOR
LEARNING AREA (COLA)

NEW 1 STOREY
ADMINISTRATION &
HALL HUB

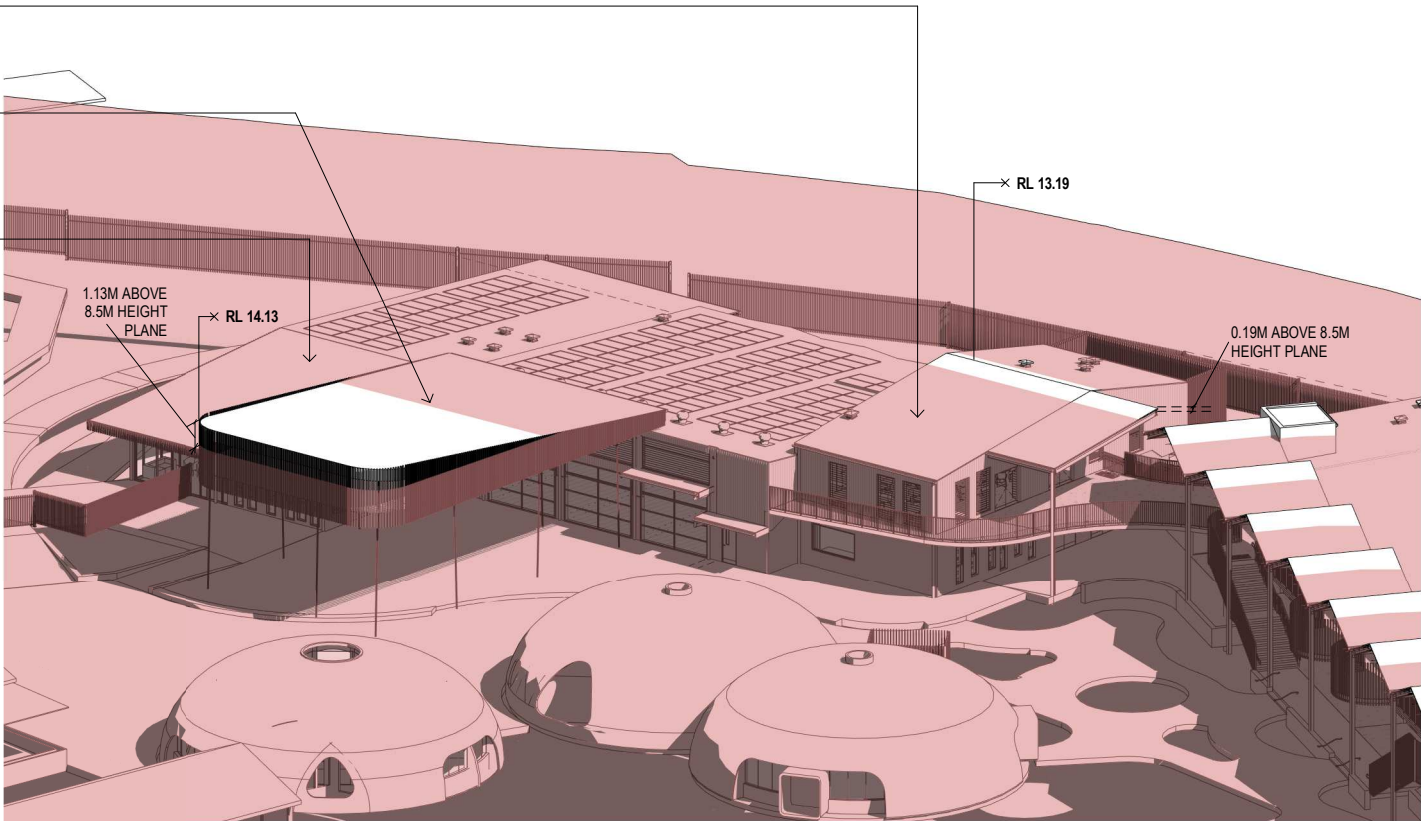


1 NNPS_3D AXO - HEIGHT PLANE - NEW ADMIN & HALL - SOUTH EAST VIEW - DA

NEW 2-STOREY
STAFF HUB

NEW COVERED OUTDOOR
LEARNING AREA (COLA)

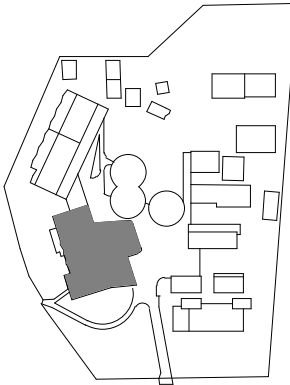
NEW 1 STOREY
ADMINISTRATION &
HALL HUB



2 NNPS_3D AXO - HEIGHT PLANE - NEW ADMIN & HALL - NORTH EAST VIEW - DA

LEGEND

8.5M 3D HEIGHT PLANE



DISCLAIMER.
This document may not be secure, may be corrupted in transmission or due to software incompatibility and/or may be amended or altered by third parties after leaving DesignInc Sydney Pty Ltd's possession. DesignInc is not responsible for and accepts no liability for such matters.
Subject only to any conflicting provision within any prior binding agreement by DesignInc Sydney Pty Ltd (such agreement may also contain additional conditions relating to this document and its use).

- The content of this document is confidential and copyright in it belongs to DesignInc Sydney Pty Ltd. The content is permitted only to be opened, read and used by the addressee.
- Users of this document must carry out all relevant investigations and must examine, take advice as required and satisfy themselves concerning the content, correctness and sufficiency of the attachment and its contents for their purposes.
- To the extent permitted by law, all conditions and warranties concerning this document or any use to which they may be put (whether as to quality, outcome, fitness, care, skill or otherwise) whether express or implied by statute, common law, equity, trade, custom or usage or otherwise, are expressly excluded.
- Any person using or relaying document releases & indemnifies and will keep indemnified,DesignInc Sydney Pty Ltd against all claims, liabilities, loss, costs and expenses arising directly or indirectly out of or in connection with such use or reliance including without limitation, any misrepresentation, error or defect in this document.
- Contractors to use Architectural drawings for set out. Contractors to check and verify all dimensions on site prior to construction / fabrication. Figured dimensions take precedence over scaled dimensions.
- Any discrepancies should be immediately referred to the Architect. All work to comply with N.C.C. statutory authorities and relevant Australian Standards.
- Refer also to the Model Disclaimer on the Cover Sheet.

No	DATE	REVISIONS	BY
A	18/08/2022	DA SUBMISSION	JO

DRAFT

ARCHITECT
DesignInc
DesignInc Sydney Pty Ltd
Level 14, 85 Castlereagh Street
Sydney NSW 2000 Australia
+61 2 8905 7100
sydney@designinc.com.au

Nominated Architects
Ian Armstrong 7260 | Cathryn Drew-Bredin 7269 | Richard Does 8126 | Mary Anne McGirr 10946

CLIENT
 **Education**

PROJECT
NARRABEEN EDUCATION PRECINCT
NAMONA ST, NORTH NARRABEEN NSW 2101

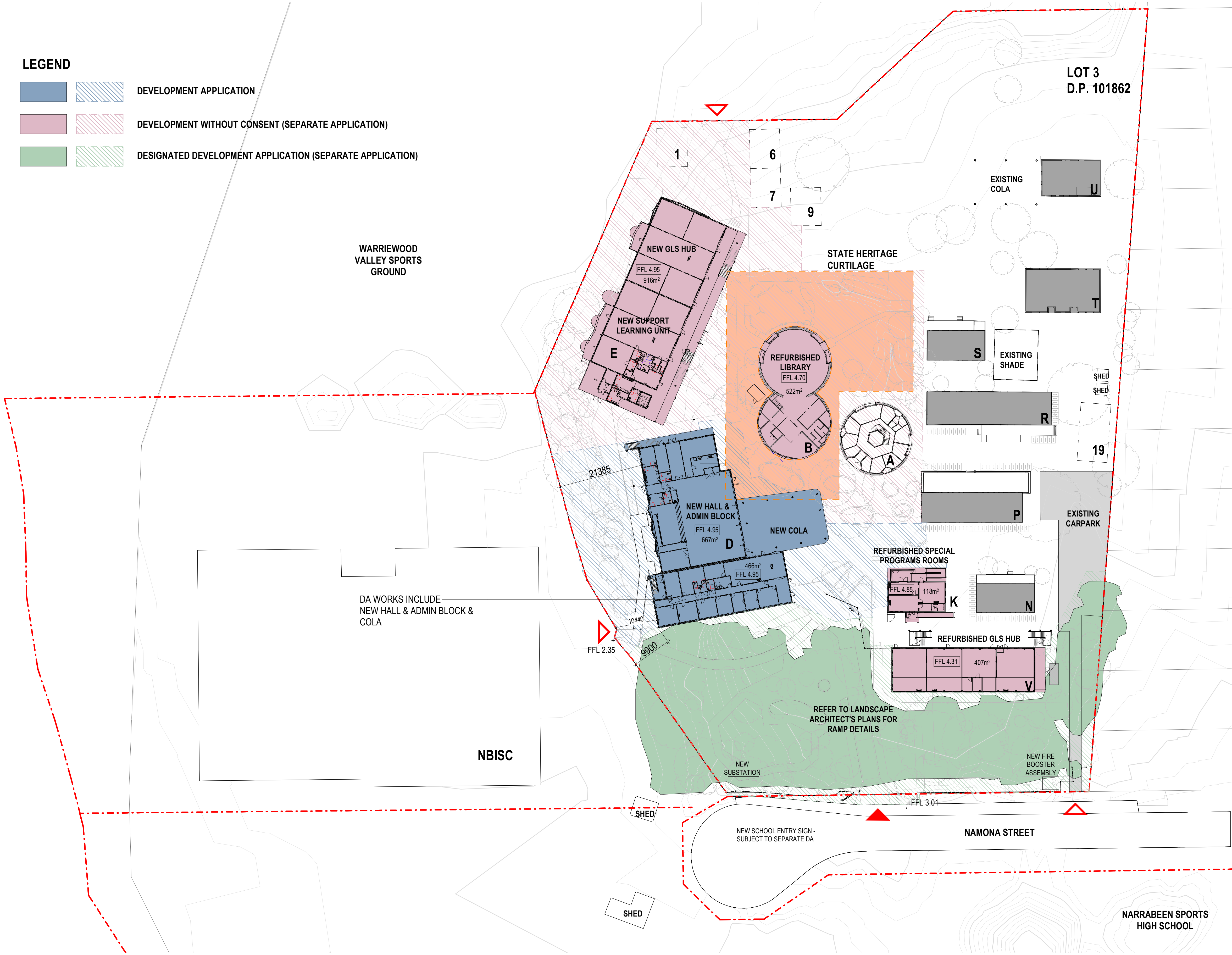
DETAILS
DRAWN
CHECKED
APPROVED
JO
RF
Approver
SCALE
1:200 @ A1

TITLE
**3D SITE TOPOGRAPHY HEIGHT PLANE -
NEW ADMIN & HALL**

DRAWING NUMBER
DA-P-0303
REVISION
A

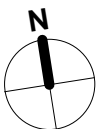
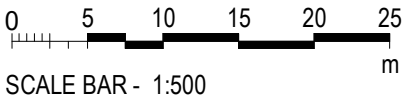
LEGEND

<div></div>	<div></div>	DEVELOPMENT APPLICATION
<div></div>	<div></div>	DEVELOPMENT WITHOUT CONSENT (SEPARATE APPLICATION)
<div></div>	<div></div>	DESIGNATED DEVELOPMENT APPLICATION (SEPARATE APPLICATION)



LEGEND

<div></div>	DEMOUNTABLES	<div></div>	PROJECT SITE EXTENTS
<div></div>	EXISTING PERMANENT BUILDING / STRUCTURE	<div></div>	STATE HERITAGE CURTILAGE
<div></div>	COASTAL WETLANDS/ BIODIVERSITY ZONE	<div></div>	MAIN ENTRY
		<div></div>	SECONDARY ENTRY



1 NNPS - NEW SITE PLAN - GROUND FLOOR - DA

DISCLAIMER.

This document may not be secure, may be corrupted in transmission or due to software incompatibility and/or may be amended or altered by third parties after leaving DesignInc Sydney Pty Ltd's possession. DesignInc is not responsible for and accepts no liability for such matters.

Subject only to any conflicting provision within any prior binding agreement by DesignInc Sydney Pty Ltd (such agreement may also contain additional conditions relating to this document and its use):

- The content of this document is confidential and copyright in it belongs to DesignInc Sydney Pty Ltd. The content is permitted only to be opened, read and used by the addressee.
- Users of this document must carry out all relevant investigations and must examine, take advice as required and satisfy themselves concerning the content, correctness and sufficiency of the attachment and its contents for their purposes.
- To the extent permitted by law, all conditions and warranties concerning this document or any use to which they may be put (whether as to quality, outcome, fitness, care, skill or otherwise) whether express or implied by statute, common law, equity, trade, custom or usage or otherwise, are expressly excluded.
- Any person using or relaying document releases & indemnifies and will keep indemnified, DesignInc Sydney Pty Ltd against all claims, liabilities, loss, costs and expenses arising directly or indirectly out of or in connection with such use or reliance including without limitation, any misrepresentation, error or defect in this document.
- Contractors to use Architectural drawings for set out. Contractors to check and verify all dimensions on site prior to construction / fabrication. Figured dimensions take precedence over scaled dimensions.
- Any discrepancies should be immediately referred to the Architect. All work to comply with N.C.C. statutory authorities and relevant Australian Standards.
- Refer also to the Model Disclaimer on the Cover Sheet.

No	DATE	REVISIONS	BY
A	18/08/2022	DA SUBMISSION	JO
B	23/08/2022	DA SUBMISSION	JO

ARCHITECT

DesignInc

Designinc Sydney Pty Ltd
Level 14, 85 Castlereagh Street
Sydney NSW 2000 Australia
+61 2 8905 7100
sydney@designinc.com.au

Nominated Architects

Ian Armstrong 7260 | Cathryn Drew-Bredin 7269 | Richard Does 8126 | Mary Anne McGirr 10946



PROJECT

NARRABEEN EDUCATION PRECINCT

NAMONA ST, NORTH NARRABEEN NSW 2101

DETAILS		
DRAWN	JO	SCALE
CHECKED	RF	
APPROVED	Approver	As indicated @ A1

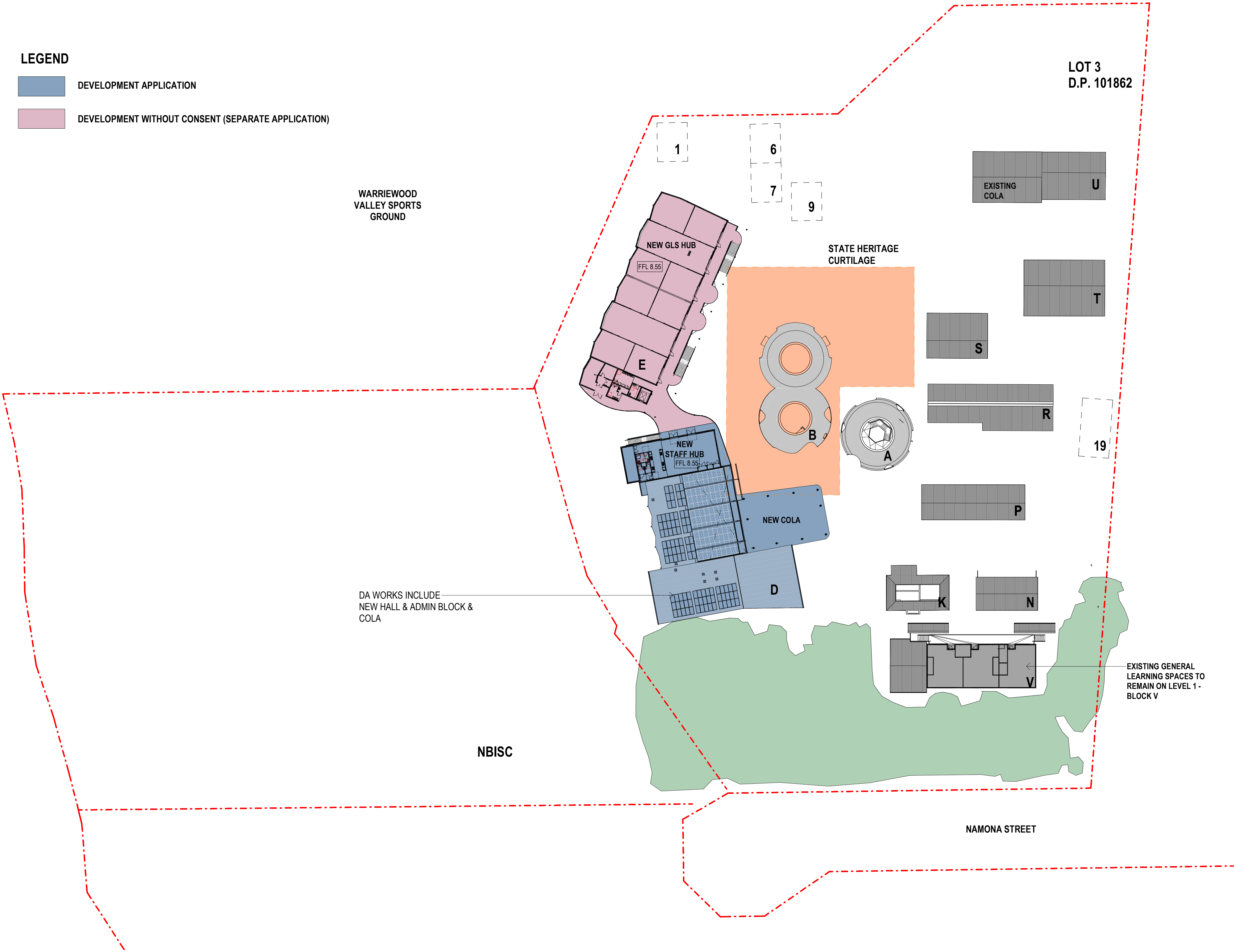
TITLE

NEW SITE PLAN - SCHOOL - GROUND FLOOR

DRAWING NUMBER	REVISION
DA-P-0521	B

LEGEND

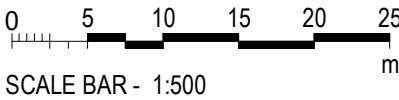
- DEVELOPMENT APPLICATION
- DEVELOPMENT WITHOUT CONSENT (SEPARATE APPLICATION)



1 NNPS - NEW SITE PLAN - LEVEL 01 - DA

LEGEND

- DEMOUNTABLES
- EXISTING PERMANENT BUILDING / STRUCTURE
- COASTAL WETLANDS/ BIODIVERSITY ZONE
- PROJECT SITE EXTENTS
- STATE HERITAGE CURTILAGE
- MAIN ENTRY
- SECONDARY ENTRY



DISCLAIMER.
This document may not be secure, may be corrupted in transmission or due to software incompatibility and/or may be amended or altered by third parties after leaving DesignInc Sydney Pty Ltd's possession. DesignInc is not responsible for and accepts no liability for such matters.
Subject only to any conflicting provision within any prior binding agreement by DesignInc Sydney Pty Ltd (such agreement may also contain additional conditions relating to this document and its use):
- The content of this document is confidential and copyright in it belongs to DesignInc Sydney Pty Ltd. The content is permitted only to be opened, read and used by the addressee.
- Users of this document must carry out all relevant investigations and must examine, take advice as required and satisfy themselves concerning the content, correctness and sufficiency of the attachment and its contents for their purposes.
- To the extent permitted by law, all conditions and warranties concerning this document or any use to which they may be put (whether as to quality, outcome, fitness, care, skill or otherwise) whether express or implied by statute, common law, equity, trade, custom or usage or otherwise, are expressly excluded.
- Any person using or relaying document releases & indemnifies and will keep indemnified, DesignInc Sydney Pty Ltd against all claims, liabilities, loss, costs and expenses arising directly or indirectly out of or in connection with such use or reliance including without limitation, any misrepresentation, error or defect in this document.
- Contractors to use Architectural drawings for set out. Contractors to check and verify all dimensions on site prior to construction / fabrication. Figured dimensions take precedence over scaled dimensions.
- Any discrepancies should be immediately referred to the Architect. All work to comply with N.C.C. statutory authorities and relevant Australian Standards.
- Refer also to the Model Disclaimer on the Cover Sheet.

No	DATE	REVISIONS	BY
A	18/08/2022	DA SUBMISSION	JO
B	23/08/2022	DA SUBMISSION	JO

ARCHITECT
DesignInc
Nominated Architects
Ian Armstrong 7260 | Cathryn Drew-Bredin 7269 | Richard Does 8126 | Mary Anne McGirr 10946

Designinc Sydney Pty Ltd
Level 14, 85 Castlereagh Street
Sydney NSW 2000 Australia
+61 2 8905 7100
sydney@designinc.com.au



PROJECT
NARRABEEN EDUCATION PRECINCT
NAMONA ST, NORTH NARRABEEN NSW 2101

DETAILS		
DRAWN	JO	SCALE
CHECKED	RF	As indicated @ A1
APPROVED	Approver	

TITLE
NEW SITE PLAN - SCHOOL - LEVEL 01

DRAWING NUMBER	REVISION
DA-P-0522	B

LEGEND

- DEVELOPMENT APPLICATION
- DEVELOPMENT WITHOUT CONSENT (SEPARATE APPLICATION)



1 NNPS - ROOF - DA

LEGEND

- DEMOUNTABLES
- EXISTING PERMANENT BUILDING / STRUCTURE
- COASTAL WETLANDS/BIODIVERSITY ZONE
- PROJECT SITE EXTENTS
- STATE HERITAGE CURTILAGE
- MAIN ENTRY
- SECONDARY ENTRY

0 5 10 15 20 25
SCALE BAR - 1:500 m

DISCLAIMER.

This document may not be secure, may be corrupted in transmission or due to software incompatibility and/or may be amended or altered by third parties after leaving DesignInc Sydney Pty Ltd's possession. DesignInc is not responsible for and accepts no liability for such matters.

Subject only to any conflicting provision within any prior binding agreement by DesignInc Sydney Pty Ltd (such agreement may also contain additional conditions relating to this document and its use):

- The content of this document is confidential and copyright in it belongs to DesignInc Sydney Pty Ltd. The content is permitted only to be opened, read and used by the addressee.
- Users of this document must carry out all relevant investigations and must examine, take advice as required and satisfy themselves concerning the content, correctness and sufficiency of the attachment and its contents for their purposes.
- To the extent permitted by law, all conditions and warranties concerning this document or any use to which they may be put (whether as to quality, outcome, fitness, care, skill or otherwise) whether express or implied by statute, common law, equity, trade, custom or usage or otherwise, are expressly excluded.
- Any person using or relaying document releases & indemnifies and will keep indemnified, DesignInc Sydney Pty Ltd against all claims, liabilities, loss, costs and expenses arising directly or indirectly out of or in connection with such use or reliance including without limitation, any misrepresentation, error or defect in this document.
- Contractors to use Architectural drawings for set out. Contractors to check and verify all dimensions on site prior to construction / fabrication. Figured dimensions take precedence over scaled dimensions.
- Any discrepancies should be immediately referred to the Architect. All work to comply with N.C.C. statutory authorities and relevant Australian Standards.
- Refer also to the Model Disclaimer on the Cover Sheet.

No	DATE	REVISIONS	BY
A	18/08/2022	DA SUBMISSION	JO
B	23/08/2022	DA SUBMISSION	JO

ARCHITECT

DesignInc

Designinc Sydney Pty Ltd
Level 14, 85 Castlereagh Street
Sydney NSW 2000 Australia
+61 2 8905 7100
sydney@designinc.com.au

Nominated Architects

Ian Armstrong 7260 | Cathryn Drew-Bredin 7269 | Richard Does 8126 | Mary Anne McGirr 10946

CLIENT



Education

PROJECT

NARRABEEN EDUCATION PRECINCT

NAMONA ST, NORTH NARRABEEN NSW 2101

DETAILS

DRAWN
CHECKED
APPROVED

JO
RF
Approver

SCALE

As indicated @ A1



TITLE

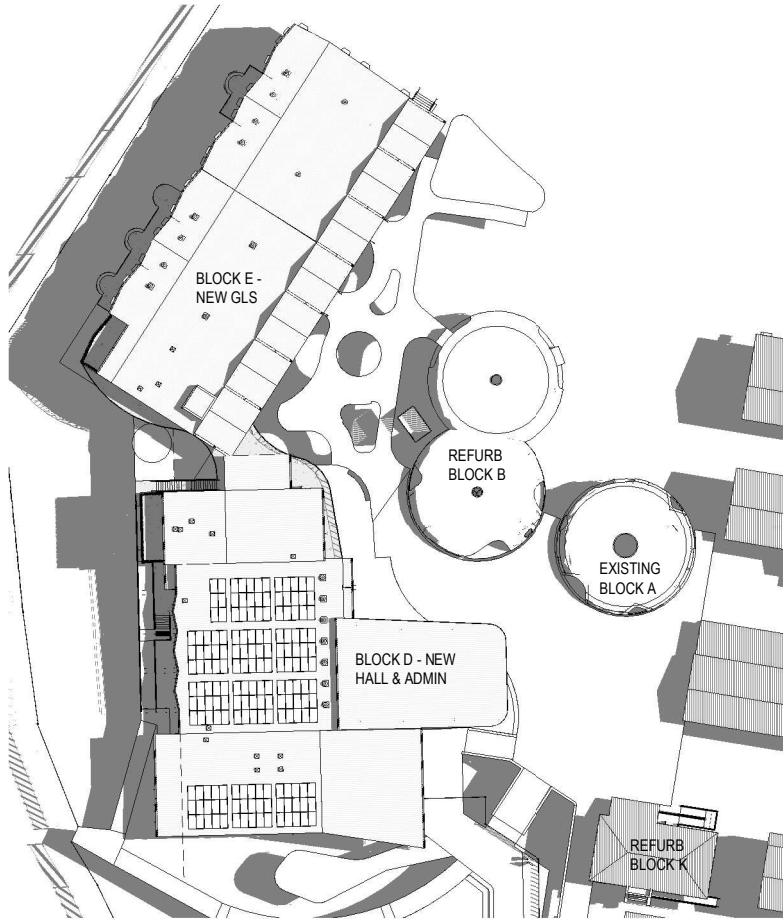
NEW SITE PLAN - SCHOOL - ROOF

DRAWING NUMBER

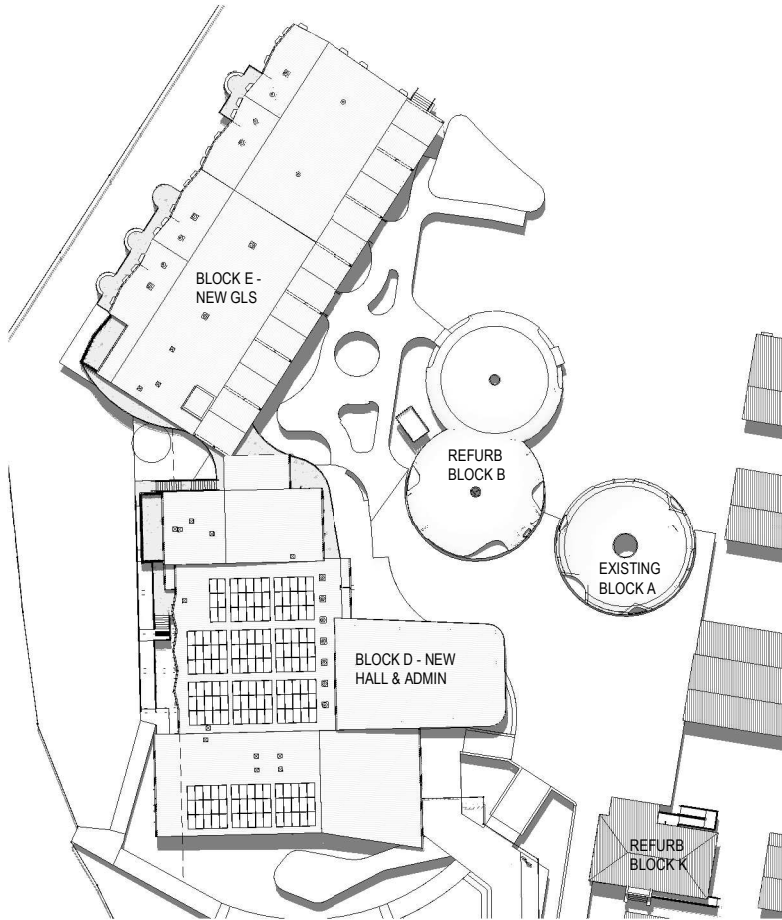
DA-P-0523

REVISION

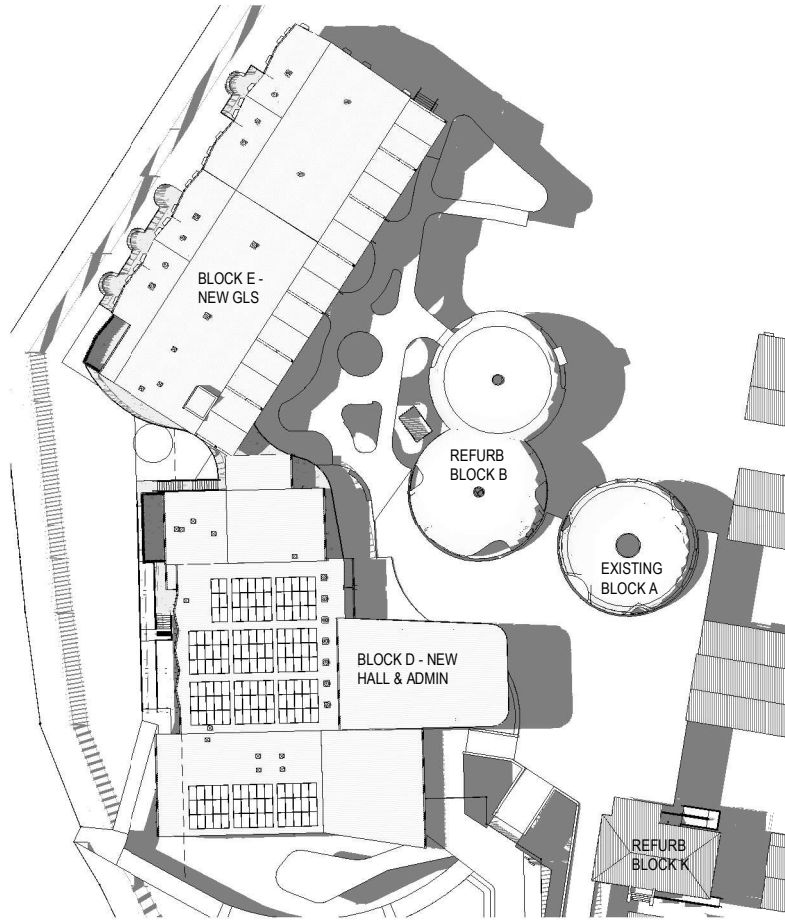
B



1 NNPS - SHADOW DIAGRAM 01 (9AM SUMMER) - DA



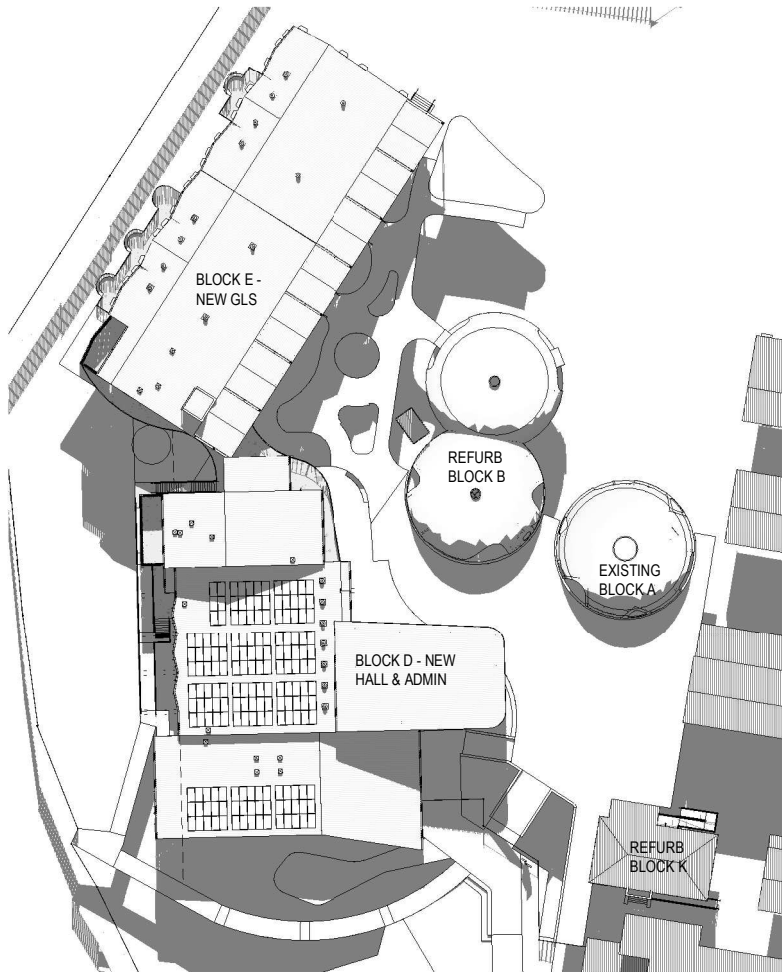
2 NNPS - SHADOW DIAGRAM 02 (12PM SUMMER) - DA



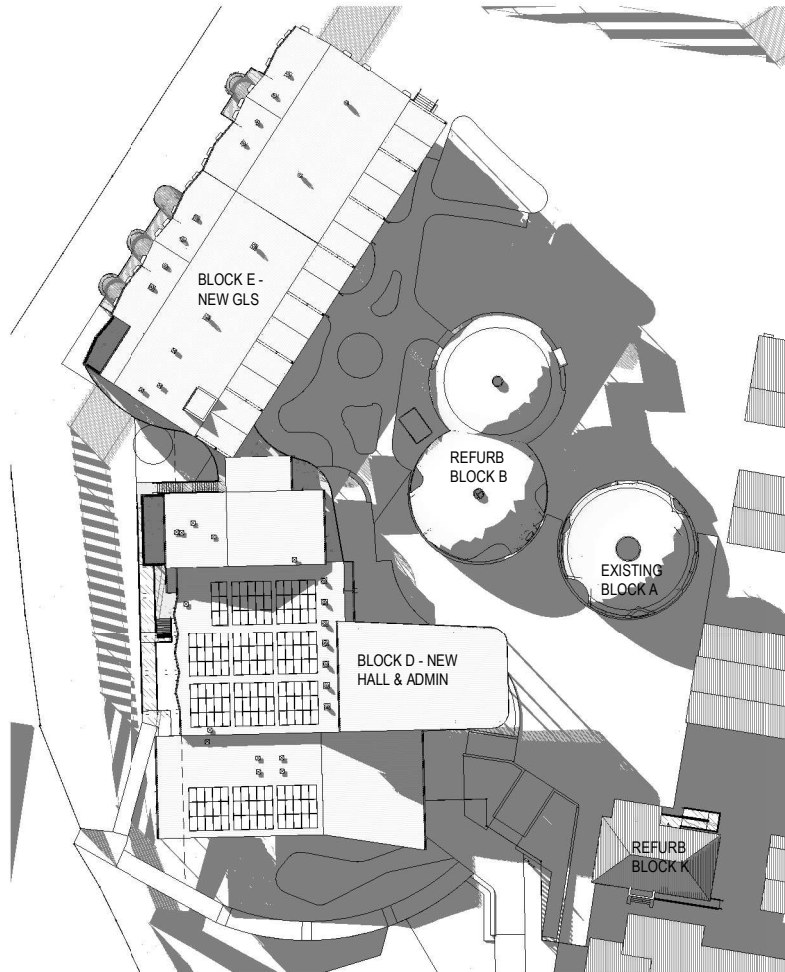
3 NNPS - SHADOW DIAGRAM 03 (3PM SUMMER) - DA



4 NNPS - SHADOW DIAGRAM 04 (9AM WINTER) - DA



5 NNPS - SHADOW DIAGRAM 05 (12PM WINTER) - DA



6 NNPS - SHADOW DIAGRAM 06 (3PM WINTER) - DA

DISCLAIMER.
This document may not be secure, may be corrupted in transmission or due to software incompatibility and/or may be amended or altered by third parties after leaving DesignInc Sydney Pty Ltd's possession. DesignInc is not responsible for and accepts no liability for such matters.
Subject only to any conflicting provision within any prior binding agreement by DesignInc Sydney Pty Ltd (such agreement may also contain additional conditions relating to this document and its use):

- The content of this document is confidential and copyright in it belongs to DesignInc Sydney Pty Ltd. The content is permitted only to be opened, read and used by the addressee.
- Users of this document must carry out all relevant investigations and must examine, take advice as required and satisfy themselves concerning the content, correctness and sufficiency of the attachment and its contents for their purposes.
- To the extent permitted by law, all conditions and warranties concerning this document or any use to which they may be put (whether as to quality, outcome, fitness, care, skill or otherwise) whether express or implied by statute, common law, equity, trade, custom or usage or otherwise, are expressly excluded.
- Any person using or relaying document releases & indemnifies and will keep indemnified, DesignInc Sydney Pty Ltd against all claims, liabilities, loss, costs and expenses arising directly or indirectly out of or in connection with such use or reliance including without limitation, any misrepresentation, error or defect in this document.
- Contractors to use Architectural drawings for set out. Contractors to check and verify all dimensions on site prior to construction / fabrication. Figured dimensions take precedence over scaled dimensions.
- Any discrepancies should be immediately referred to the Architect. All work to comply with N.C.C. statutory authorities and relevant Australian Standards.
- Refer also to the Model Disclaimer on the Cover Sheet.

No	DATE	REVISIONS	BY
A	18/08/2022	DA SUBMISSION	JO

ARCHITECT
DesignInc
DesignInc Sydney Pty Ltd
Level 14, 85 Castlereagh Street
Sydney NSW 2000 Australia
+61 2 8905 7100
sydney@designinc.com.au

Nominated Architects
Ian Armstrong 7260 | Cathryn Drew-Bredin 7269 | Richard Does 8126 | Mary Anne McGirr 10946

CLIENT
 **Education**

PROJECT
NARRABEEN EDUCATION PRECINCT
NAMONA ST, NORTH NARRABEEN NSW 2101

DETAILS
DRAWN JA
CHECKED JO
APPROVED Approver
SCALE
@ A1

TITLE
SHADOW DIAGRAMS

DRAWING NUMBER
DA-P-0600
REVISION
A

0 5 10 15 20 25
SCALE BAR - 1:500



DISCLAIMER.
This document may not be secure, may be corrupted in transmission or due to software incompatibility and/or may be amended or altered by third parties after leaving DesignInc Sydney Pty Ltd's possession. DesignInc is not responsible for and accepts no liability for such matters.
Subject only to any conflicting provision within any prior binding agreement by DesignInc Sydney Pty Ltd (such agreement may also contain additional conditions relating to this document and its use).

- The content of this document is confidential and copyright in it belongs to DesignInc Sydney Pty Ltd. The content is permitted only to be opened, read and used by the addressee.
- Users of this document must carry out all relevant investigations and must examine, take advice as required and satisfy themselves concerning the content, correctness and sufficiency of the attachment and its contents for their purposes.
- To the extent permitted by law, all conditions and warranties concerning this document or any use to which they may be put (whether as to quality, outcome, fitness, care, skill or otherwise) whether express or implied by statute, common law, equity, trade, custom or usage or otherwise, are expressly excluded.
- Any person using or relaying document releases & indemnifies and will keep indemnified, DesignInc Sydney Pty Ltd against all claims, liabilities, loss, costs and expenses arising directly or indirectly out of or in connection with such use or reliance including without limitation, any misrepresentation, error or defect in this document.
- Contractors to use Architectural drawings for set out. Contractors to check and verify all dimensions on site prior to construction / fabrication. Figured dimensions take precedence over scaled dimensions.
- Any discrepancies should be immediately referred to the Architect. All work to comply with N.C.C. statutory authorities and relevant Australian Standards.
- Refer also to the Model Disclaimer on the Cover Sheet.

No	DATE	REVISIONS	BY
A	18/08/2022	DA SUBMISSION	JO

ARCHITECT
DesignInc
Designinc Sydney Pty Ltd
Level 14, 85 Castlereagh Street
Sydney NSW 2000 Australia
+61 2 8905 7100
sydney@designinc.com.au

Nominated Architects
Ian Armstrong 7260 | Cathryn Drew-Bredin 7269 | Richard Does 8126 | Mary Anne McGirr 10946

CLIENT
 **Education**

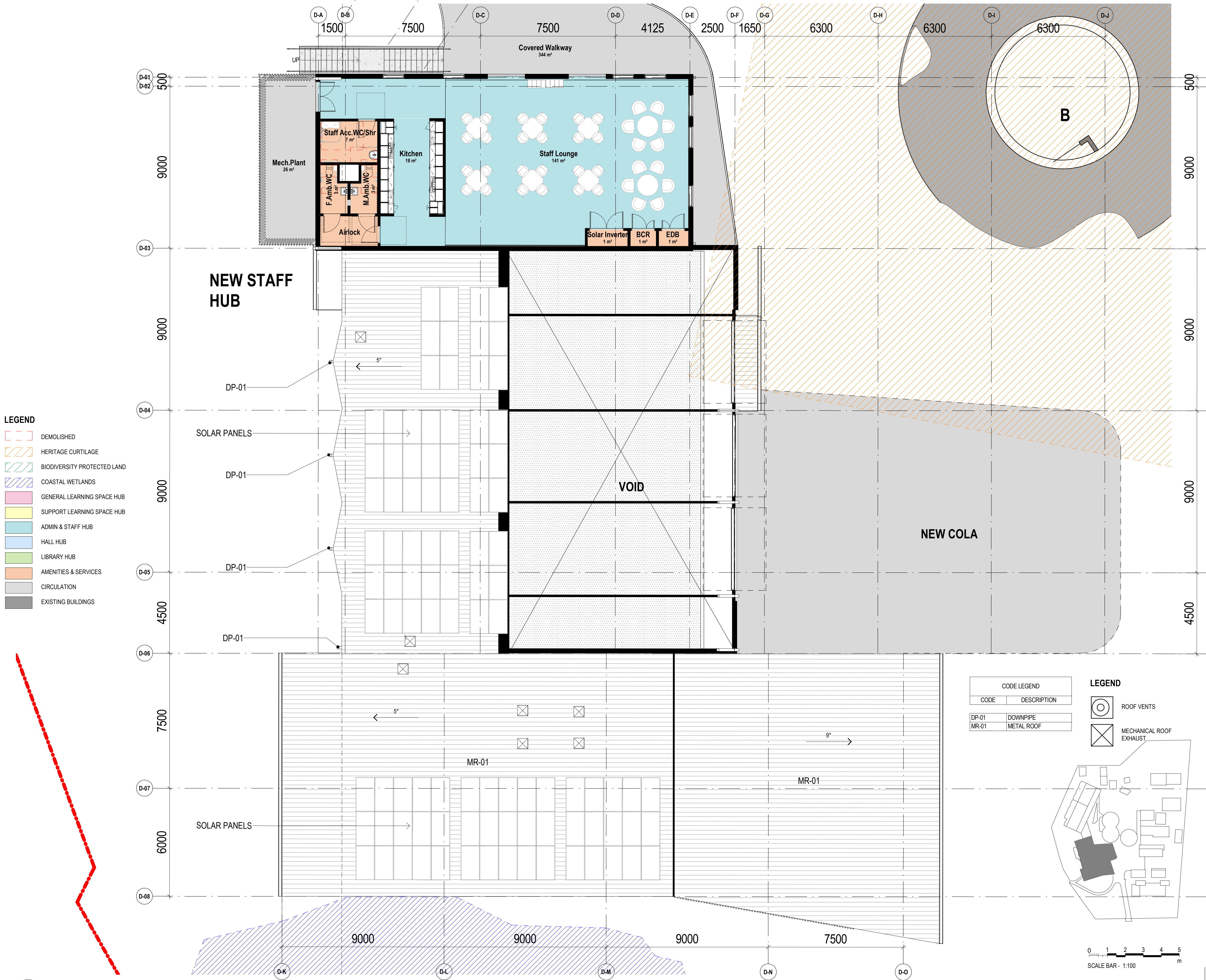
PROJECT
NARRABEEN EDUCATION PRECINCT
NAMONA ST, NORTH NARRABEEN NSW 2101

DETAILS
DRAWN JO
CHECKED RF
APPROVED Approver
SCALE
1:100 @ A1

TITLE
NEW HALL & ADMIN - GROUND FLOOR

DRAWING NUMBER
DA-P-1040
REVISION
A

- LEGEND**
- DEMOLISHED
 - HERITAGE CURTLAGE
 - BIODIVERSITY PROTECTED LAND
 - COASTAL WETLANDS
 - GENERAL LEARNING SPACE HUB
 - SUPPORT LEARNING SPACE HUB
 - ADMIN & STAFF HUB
 - HALL HUB
 - LIBRARY HUB
 - AMENITIES & SERVICES
 - CIRCULATION
 - EXISTING BUILDINGS



DISCLAIMER.
This document may not be secure, may be corrupted in transmission or due to software incompatibility and/or may be amended or altered by third parties after leaving DesignInc Sydney Pty Ltd's possession. DesignInc is not responsible for and accepts no liability for such matters.
Subject only to any conflicting provision within any prior binding agreement by DesignInc Sydney Pty Ltd (such agreement may also contain additional conditions relating to this document and its use):

- The content of this document is confidential and copyright in it belongs to DesignInc Sydney Pty Ltd. The content is permitted only to be opened, read and used by the addressee.
- Users of this document must carry out all relevant investigations and must examine, take advice as required and satisfy themselves concerning the content, correctness and sufficiency of the attachment and its contents for their purposes.
- To the extent permitted by law, all conditions and warranties concerning this document or any use to which they may be put (whether as to quality, outcome, fitness, care, skill or otherwise) whether express or implied by statute, common law, equity, trade, custom or usage or otherwise, are expressly excluded.
- Any person using or relaying document releases & indemnifies and will keep indemnified, DesignInc Sydney Pty Ltd against all claims, liabilities, loss, costs and expenses arising directly or indirectly out of or in connection with such use or reliance including without limitation, any misrepresentation, error or defect in this document.
- Contractors to use Architectural drawings for set out. Contractors to check and verify all dimensions on site prior to construction / fabrication. Figured dimensions take precedence over scaled dimensions.
- Any discrepancies should be immediately referred to the Architect. All work to comply with N.C.C. statutory authorities and relevant Australian Standards.
- Refer also to the Model Disclaimer on the Cover Sheet.

No	DATE	REVISIONS	BY
A	18/08/2022	DA SUBMISSION	JO
B	23/08/2022	DA SUBMISSION	JO

ARCHITECT
DesignInc
DesignInc Sydney Pty Ltd
Level 14, 85 Castlereagh Street
Sydney NSW 2000 Australia
+61 2 8905 7100
sydney@designinc.com.au

Nominated Architects
Ian Armstrong 7260 | Cathryn Drew-Bredin 7269 | Richard Does 8126 | Mary Anne McGirr 10846

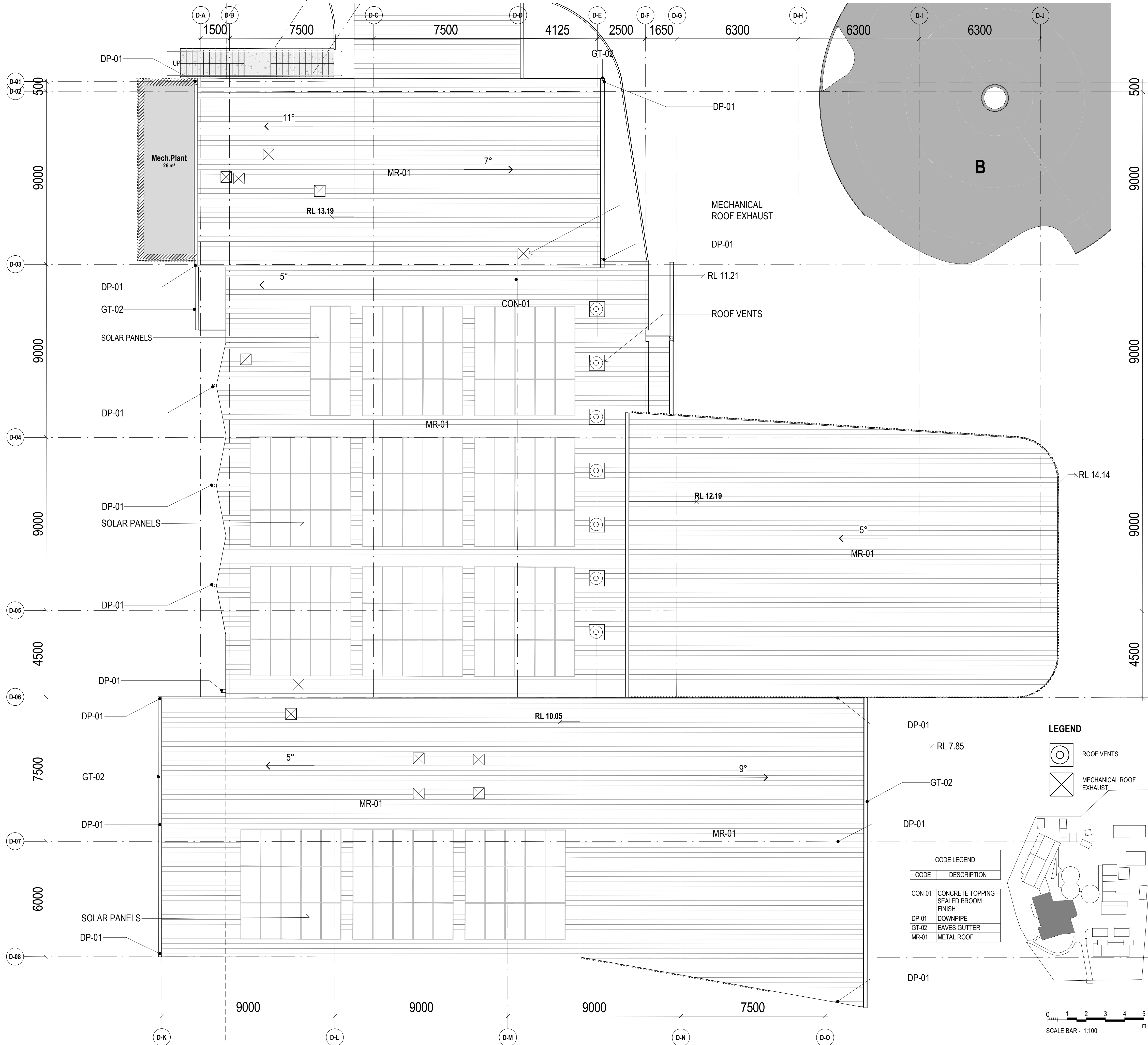
CLIENT
NSW GOVERNMENT | **Education**

PROJECT
NARRABEEN EDUCATION PRECINCT
NAMONA ST, NORTH NARRABEEN NSW 2101

DETAILS
DRAWN
CHECKED
APPROVED
JO
RF
Approver
SCALE
As indicated @ A1

TITLE
NEW HALL & ADMIN - LEVEL 1

DRAWING NUMBER
DA-P-1041
REVISION
B



DISCLAIMER.

This document may not be secure, may be corrupted in transmission or due to software incompatibility and/or may be amended or altered by third parties after leaving DesignInc Sydney Pty Ltd's possession. DesignInc is not responsible for and accepts no liability for such matters.

Subject only to any conflicting provision within any prior binding agreement by DesignInc Sydney Pty Ltd (such agreement may also contain additional conditions relating to this document and its use):

- The content of this document is confidential and copyright in it belongs to DesignInc Sydney Pty Ltd. The content is permitted only to be opened, read and used by the addressee.
- Users of this document must carry out all relevant investigations and must examine, take advice as required and satisfy themselves concerning the content, correctness and sufficiency of the attachment and its contents for their purposes.
- To the extent permitted by law, all conditions and warranties concerning this document or any use to which they may be put (whether as to quality, outcome, fitness, care, skill or otherwise) whether express or implied by statute, common law, equity, trade, custom or usage or otherwise, are expressly excluded.
- Any person using or relaying document releases & indemnifies and will keep indemnified, DesignInc Sydney Pty Ltd against all claims, liabilities, loss, costs and expenses arising directly or indirectly out of or in connection with such use or reliance including without limitation, any misrepresentation, error or defect in this document.
- Contractors to use Architectural drawings for set out. Contractors to check and verify all dimensions on site prior to construction / fabrication. Figured dimensions take precedence over scaled dimensions.
- Any discrepancies should be immediately referred to the Architect. All work to comply with N.C.C. statutory authorities and relevant Australian Standards.
- Refer also to the Model Disclaimer on the Cover Sheet.

No	DATE	REVISIONS	BY
A	18/08/2022	DA SUBMISSION	JO
B	23/08/2022	DA SUBMISSION	JO

ARCHITECT

DesignInc

DesignInc Sydney Pty Ltd
Level 14, 85 Castlereagh Street
Sydney NSW 2000 Australia
+61 2 8905 7100
sydney@designinc.com.au

Nominated Architects

Ian Armstrong 7260 | Cathryn Drew-Bredin 7269 | Richard Does 8126 | Mary Anne McGirr 10946

CLIENT

NSW GOVERNMENT | **Education**

PROJECT

NARRABEEN EDUCATION PRECINCT
NAMONA ST, NORTH NARRABEEN NSW 2101

DETAILS

DRAWN	JO	SCALE	
CHECKED	CM	As indicated @ A1	
APPROVED	Approver		

TITLE

NEW HALL & ADMIN - ROOF PLAN

DRAWING NUMBER

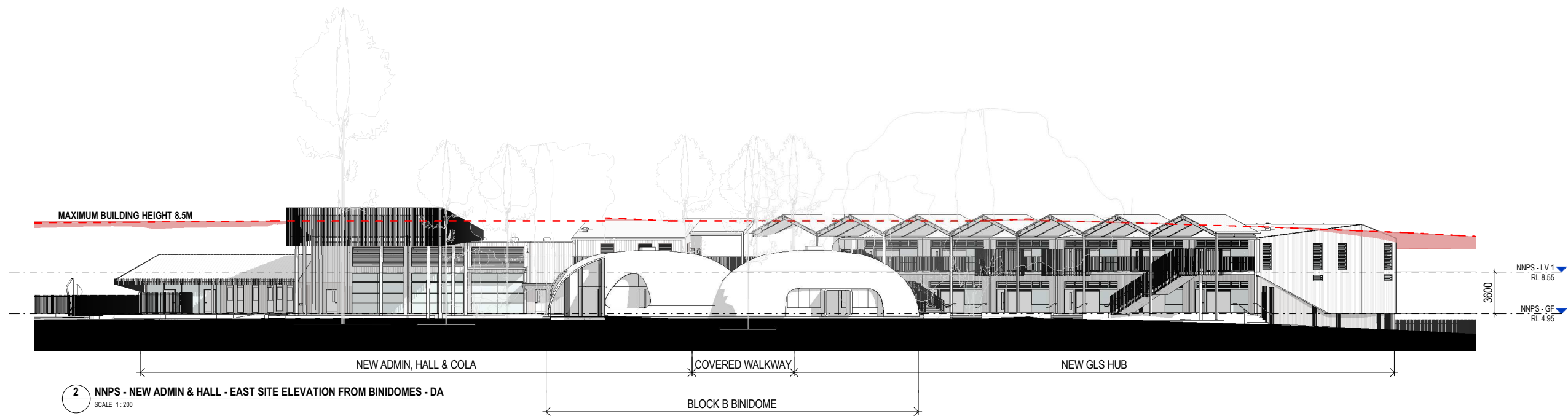
DA-P-1042

REVISION

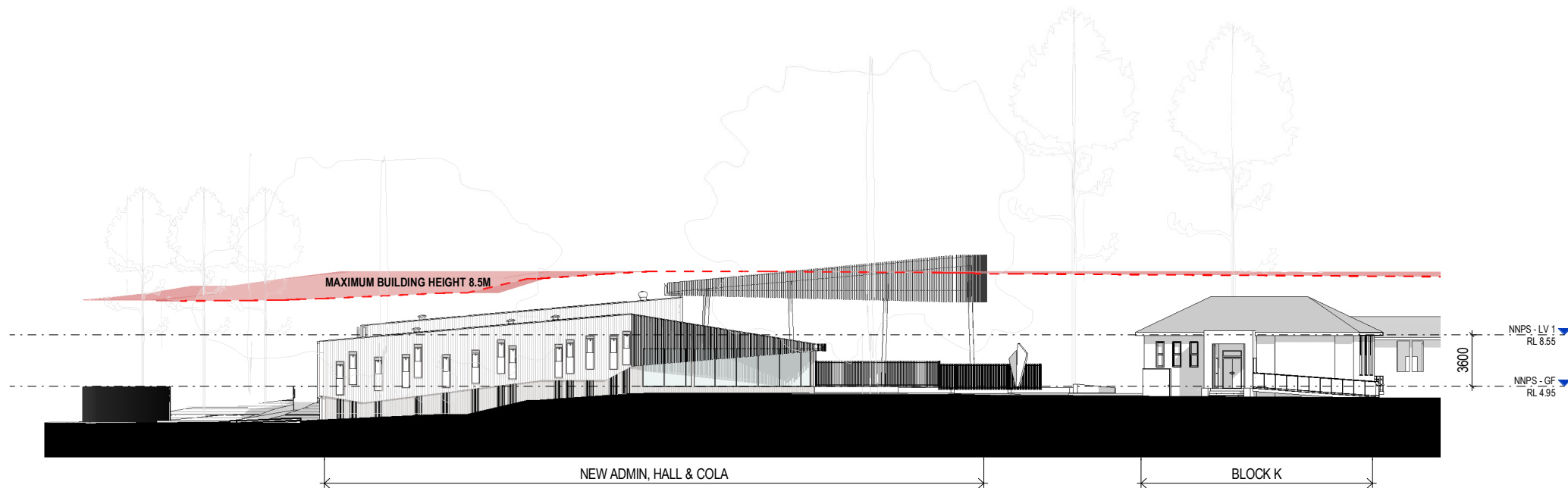
B



1 NNPS - WEST SITE ELEVATION - FROM BOUNDARY - DA
SCALE 1:200



2 NNPS - NEW ADMIN & HALL - EAST SITE ELEVATION FROM BINIDOMES - DA
SCALE 1:200



3 NNPS - NEW ADMIN & HALL - SOUTH SITE ELEVATION - DA
SCALE 1:200

DISCLAIMER.
This document may not be secure, may be corrupted in transmission or due to software incompatibility and/or may be amended or altered by third parties after leaving DesignInc Sydney Pty Ltd's possession. DesignInc is not responsible for and accepts no liability for such matters.
Subject only to any conflicting provision within any prior binding agreement by DesignInc Sydney Pty Ltd (such agreement may also contain additional conditions relating to this document and its use):

- The content of this document is confidential and copyright in it belongs to DesignInc Sydney Pty Ltd. The content is permitted only to be opened, read and used by the addressee.
- Users of this document must carry out all relevant investigations and must examine, take advice as required and satisfy themselves concerning the content, correctness and sufficiency of the attachment and its contents for their purposes.
- To the extent permitted by law, all conditions and warranties concerning this document or any use to which they may be put (whether as to quality, outcome, fitness, care, skill or otherwise) whether express or implied by statute, common law, equity, trade, custom or usage or otherwise, are expressly excluded.
- Any person using or relaying document releases & indemnifies and will keep indemnified, DesignInc Sydney Pty Ltd against all claims, liabilities, loss, costs and expenses arising directly or indirectly out of or in connection with such use or reliance including without limitation, any misrepresentation, error or defect in this document.
- Contractors to use Architectural drawings for set out. Contractors to check and verify all dimensions on site prior to construction / fabrication. Figured dimensions take precedence over scaled dimensions.
- Any discrepancies should be immediately referred to the Architect. All work to comply with N.C.C. statutory authorities and relevant Australian Standards.
- Refer also to the Model Disclaimer on the Cover Sheet.

No	DATE	REVISIONS	BY
A	18/08/2022	DA SUBMISSION	JO

ARCHITECT
DesignInc
DesignInc Sydney Pty Ltd
Level 14, 85 Castlereagh Street
Sydney NSW 2000 Australia
+61 2 8905 7100
sydney@designinc.com.au

Nominated Architects
Ian Armstrong 7260 | Cathryn Drew-Bredin 7269 | Richard Does 8126 | Mary Anne McGirr 10946

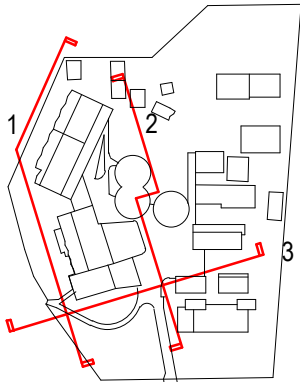
CLIENT
 **Education**

PROJECT
NARRABEEN EDUCATION PRECINCT
NAMONA ST, NORTH NARRABEEN NSW 2101

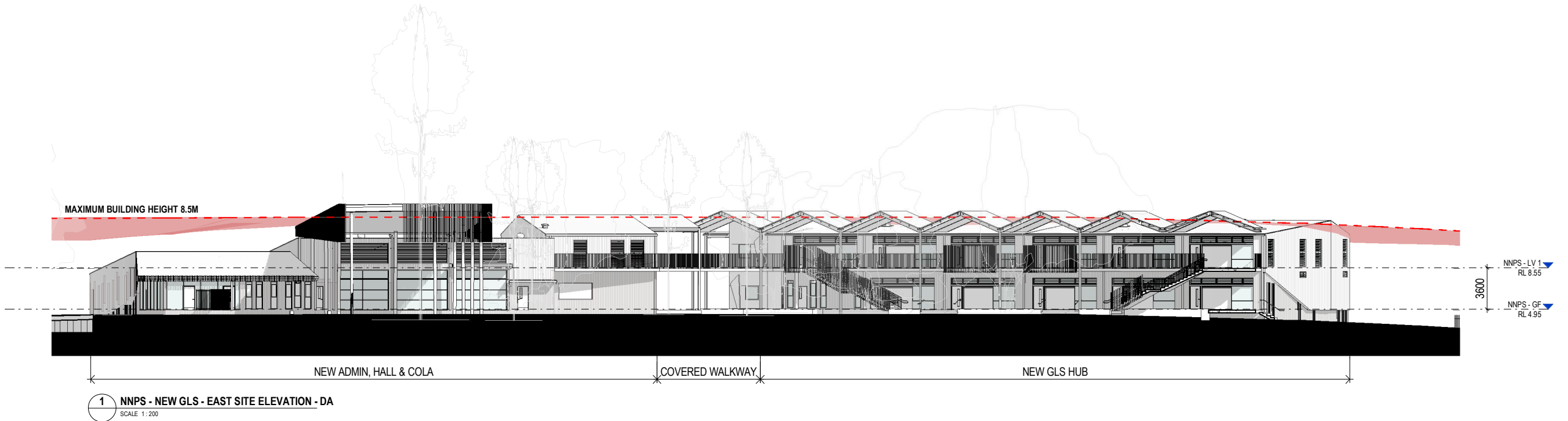
DETAILS
DRAWN JO
CHECKED RF
APPROVED Approver
SCALE
1:200 @ A1

TITLE
NEW ADMIN & HALL - SITE ELEVATIONS

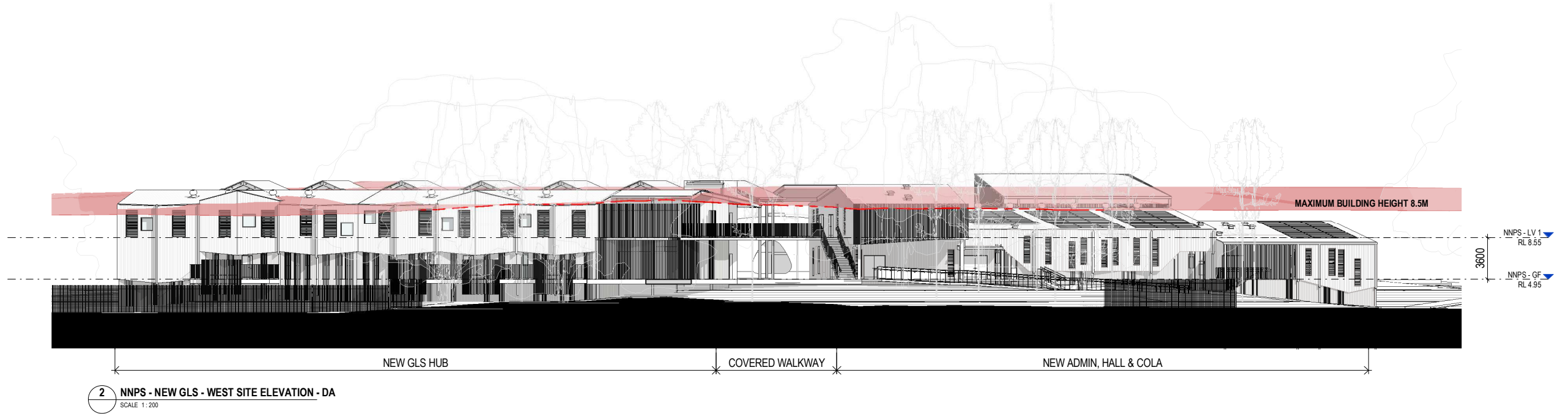
DRAWING NUMBER
DA-P-3001
REVISION
A



0 2 4 6 8 10
SCALE BAR - 1:200
m



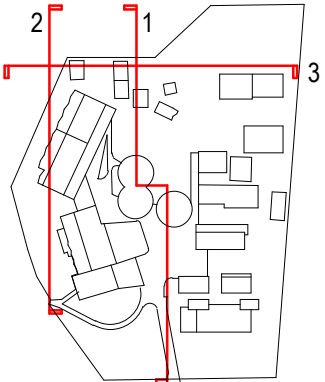
1 NNPS - NEW GLS - EAST SITE ELEVATION - DA
SCALE 1:200



2 NNPS - NEW GLS - WEST SITE ELEVATION - DA
SCALE 1:200



3 NNPS - NEW GLS - NORTH SITE ELEVATION - DA
SCALE 1:200



DISCLAIMER.
This document may not be secure, may be corrupted in transmission or due to software incompatibility and/or may be amended or altered by third parties after leaving DesignInc Sydney Pty Ltd's possession. DesignInc is not responsible for and accepts no liability for such matters.
Subject only to any conflicting provision within any prior binding agreement by DesignInc Sydney Pty Ltd (such agreement may also contain additional conditions relating to this document and its use):

- The content of this document is confidential and copyright in it belongs to DesignInc Sydney Pty Ltd. The content is permitted only to be opened, read and used by the addressee.
- Users of this document must carry out all relevant investigations and must examine, take advice as required and satisfy themselves concerning the content, correctness and sufficiency of the attachment and its contents for their purposes.
- To the extent permitted by law, all conditions and warranties concerning this document or any use to which they may be put (whether as to quality, outcome, fitness, care, skill or otherwise) whether express or implied by statute, common law, equity, trade, custom or usage or otherwise, are expressly excluded.
- Any person using or relaying document releases & indemnifies and will keep indemnified, DesignInc Sydney Pty Ltd against all claims, liabilities, loss, costs and expenses arising directly or indirectly out of or in connection with such use or reliance including without limitation, any misrepresentation, error or defect in this document.
- Contractors to use Architectural drawings for set out. Contractors to check and verify all dimensions on site prior to construction / fabrication. Figured dimensions take precedence over scaled dimensions.
- Any discrepancies should be immediately referred to the Architect. All work to comply with N.C.C. statutory authorities and relevant Australian Standards.
- Refer also to the Model Disclaimer on the Cover Sheet.

No	DATE	REVISIONS	BY
A	18/08/2022	DA SUBMISSION	JO

ARCHITECT
DesignInc
DesignInc Sydney Pty Ltd
Level 14, 85 Castlereagh Street
Sydney NSW 2000 Australia
+61 2 8905 7100
sydney@designinc.com.au

Nominated Architects
Ian Armstrong 7260 | Cathryn Drew-Bredin 7269 | Richard Does 8126 | Mary Anne McGirr 10946

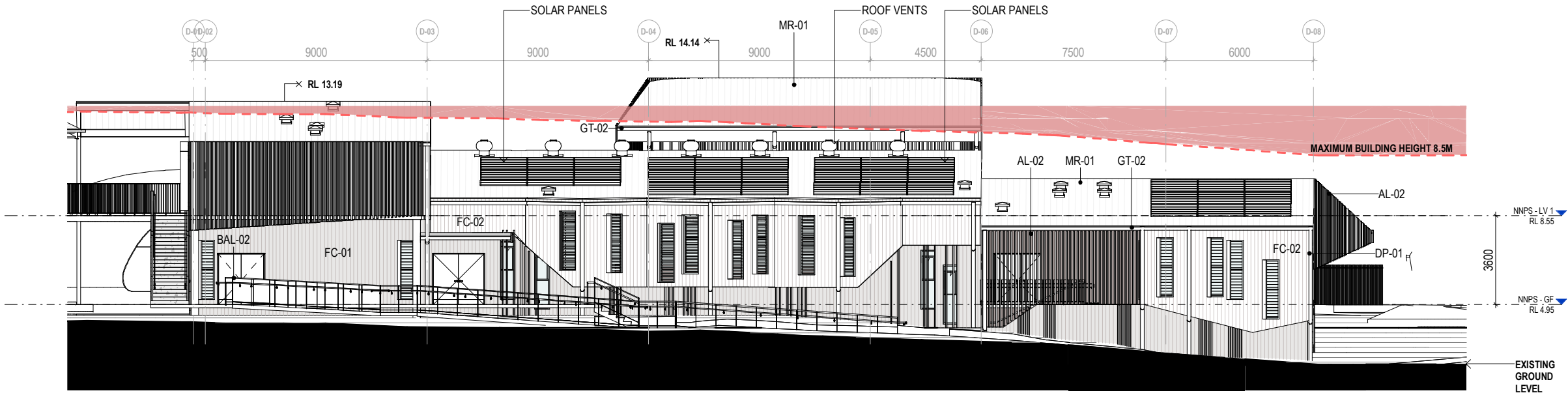
CLIENT


PROJECT
NARRABEEN EDUCATION PRECINCT
NAMONA ST, NORTH NARRABEEN NSW 2101

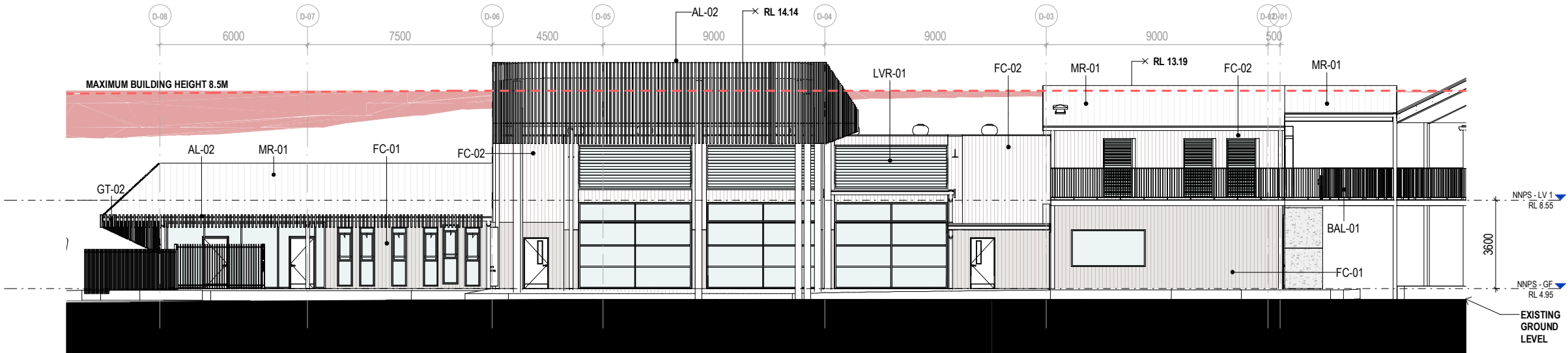
DETAILS
DRAWN JO
CHECKED RF
APPROVED Approver
SCALE
1:200 @ A1

TITLE
NEW GLS HUB - SITE ELEVATIONS

DRAWING NUMBER
DA-P-3002
REVISION
A

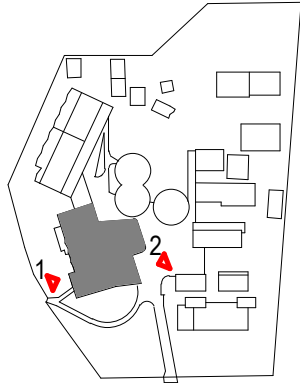


1 NNPS - NEW ADMIN & HALL - WEST ELEVATION - DA
SCALE 1:100



2 NNPS - NEW ADMIN & HALL - EAST ELEVATION - DA
SCALE 1:100

CODE LEGEND	
CODE	DESCRIPTION
AL-02	ALUMINIUM VERTICAL BATTENS
BAL-01	BALUSTRADE - GALVANISED FINISH
BAL-02	BALUSTRADE W/ KICKRAIL - GALVANISED FINISH
DP-01	DOWNPIPE
FC-01	CFC CLADDING
FC-02	CFC CLADDING
GT-02	EAVES GUTTER
LVR-01	GLAZING LOUVRES
MR-01	METAL ROOF



0 1 2 3 4 5
SCALE BAR - 1:100
m

DISCLAIMER.
This document may not be secure, may be corrupted in transmission or due to software incompatibility and/or may be amended or altered by third parties after leaving DesignInc Sydney Pty Ltd's possession. DesignInc is not responsible for and accepts no liability for such matters.
Subject only to any conflicting provision within any prior binding agreement by DesignInc Sydney Pty Ltd (such agreement may also contain additional conditions relating to this document and its use):

- The content of this document is confidential and copyright in it belongs to DesignInc Sydney Pty Ltd. The content is permitted only to be opened, read and used by the addressee.
- Users of this document must carry out all relevant investigations and must examine, take advice as required and satisfy themselves concerning the content, correctness and sufficiency of the attachment and its contents for their purposes.
- To the extent permitted by law, all conditions and warranties concerning this document or any use to which they may be put (whether as to quality, outcome, fitness, care, skill or otherwise) whether express or implied by statute, common law, equity, trade, custom or usage or otherwise, are expressly excluded.
- Any person using or relaying document releases & indemnifies and will keep indemnified, DesignInc Sydney Pty Ltd against all claims, liabilities, loss, costs and expenses arising directly or indirectly out of or in connection with such use or reliance including without limitation, any misrepresentation, error or defect in this document.
- Contractors to use Architectural drawings for set out. Contractors to check and verify all dimensions on site prior to construction / fabrication. Figured dimensions take precedence over scaled dimensions.
- Any discrepancies should be immediately referred to the Architect. All work to comply with N.C.C. statutory authorities and relevant Australian Standards.
- Refer also to the Model Disclaimer on the Cover Sheet.

No	DATE	REVISIONS	BY
A	18/08/2022	DA SUBMISSION	JO

ARCHITECT
DesignInc
DesignInc Sydney Pty Ltd
Level 14, 85 Castlereagh Street
Sydney NSW 2000 Australia
+61 2 8905 7100
sydney@designinc.com.au

Nominated Architects
Ian Armstrong 7260 | Cathryn Drew-Bredin 7269 | Richard Does 8126 | Mary Anne McGirr 10946

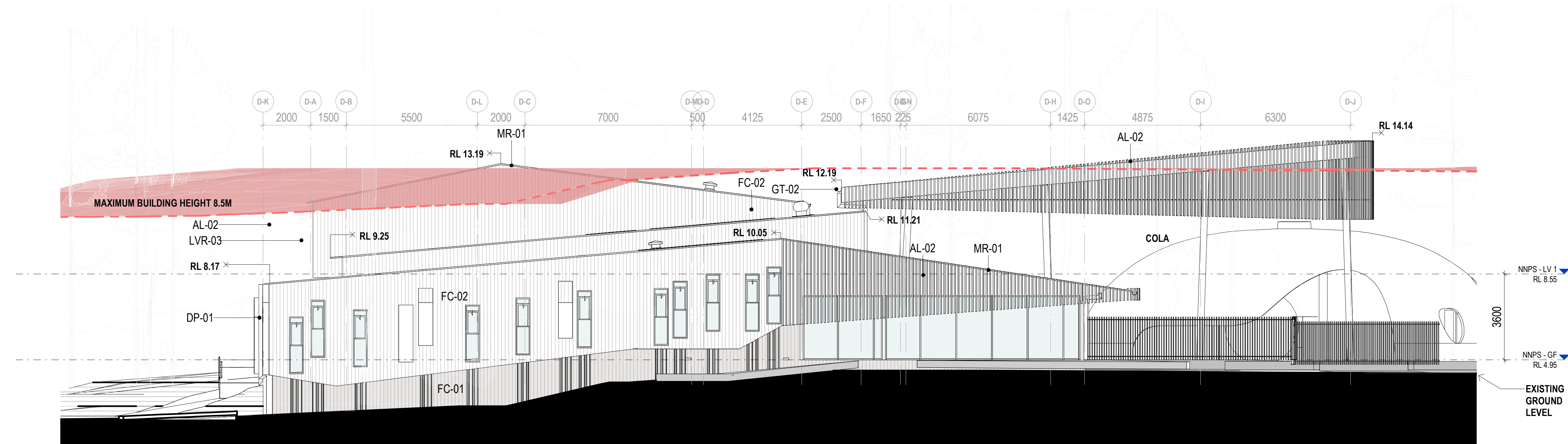
CLIENT
 **Education**

PROJECT
NARRABEEN EDUCATION PRECINCT
NAMONA ST, NORTH NARRABEEN NSW 2101

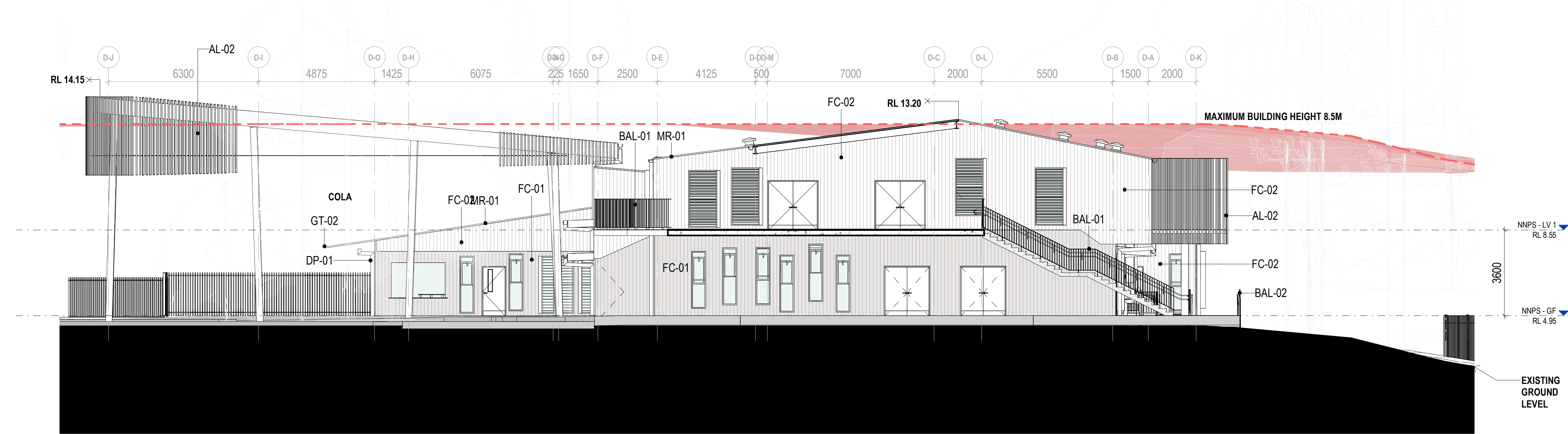
DETAILS
DRAWN JO
CHECKED RF
APPROVED Approver
SCALE
1:100 @ A1

TITLE
NEW ADMIN & HALL - GA ELEVATIONS

DRAWING NUMBER
DA-P-3040
REVISION
A

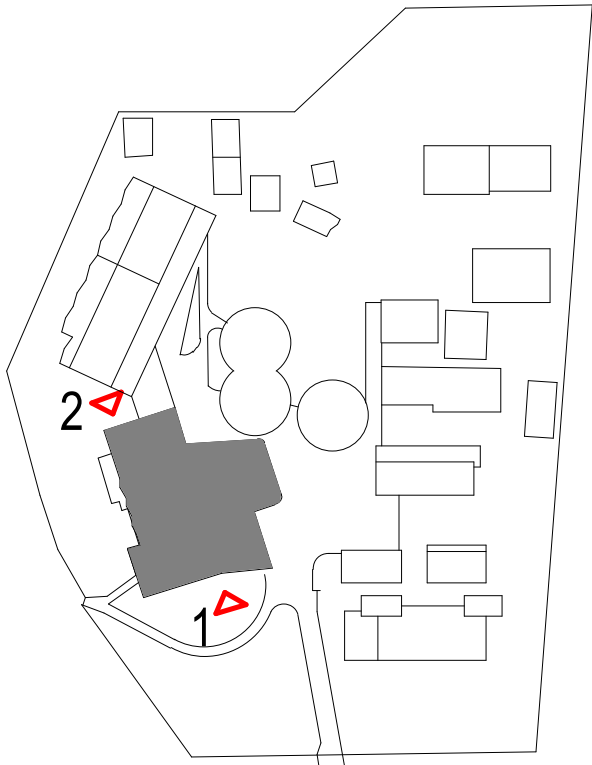


1 NNPS - NEW ADMIN & HALL - SOUTH ELEVATION - DA
SCALE 1:100



2 NNPS - NEW ADMIN & HALL - NORTH ELEVATION - DA
SCALE 1:100

CODE LEGEND	
CODE	DESCRIPTION
AL-02	ALUMINIUM VERTICAL BATTENS
BAL-01	BALUSTRADE - GALVANISED FINISH
BAL-02	BALUSTRADE W/ KICKRAIL - GALVANISED FINISH
DP-01	DOWNPIPE
FC-01	CFC CLADDING
FC-02	CFC CLADDING
GT-02	EAVES GUTTER
LVR-03	FIXED METAL LOUVRES - ACOUSTIC
MR-01	METAL ROOF



0 1 2 3 4 5
SCALE BAR - 1:100 m

DISCLAIMER.
This document may not be secure, may be corrupted in transmission or due to software incompatibility and/or may be amended or altered by third parties after leaving DesignInc Sydney Pty Ltd's possession. DesignInc is not responsible for and accepts no liability for such matters.
Subject only to any conflicting provision within any prior binding agreement by DesignInc Sydney Pty Ltd (such agreement may also contain additional conditions relating to this document and its use):
- The content of this document is confidential and copyright in it belongs to DesignInc Sydney Pty Ltd. The content is permitted only to be opened, read and used by the addressee.
- Users of this document must carry out all relevant investigations and must examine, take advice as required and satisfy themselves concerning the content, correctness and sufficiency of the attachment and its contents for their purposes.
- To the extent permitted by law, all conditions and warranties concerning this document or any use to which they may be put (whether as to quality, outcome, fitness, care, skill or otherwise) whether express or implied by statute, common law, equity, trade, custom or usage or otherwise, are expressly excluded.
- Any person using or relying on document releases & indemnifies and will keep indemnified, DesignInc Sydney Pty Ltd against all claims, liabilities, loss, costs and expenses arising directly or indirectly out of or in connection with such use or reliance including without limitation, any misrepresentation, error or defect in this document.
- Contractors to use Architectural drawings for set out. Contractors to check and verify all dimensions on site prior to construction / fabrication. Figured dimensions take precedence over scaled dimensions.
- Any discrepancies should be immediately referred to the Architect. All work to comply with N.C.C. statutory authorities and relevant Australian Standards.
- Refer also to the Model Disclaimer on the Cover Sheet.

No	DATE	REVISIONS	BY
A	18/08/2022	DA SUBMISSION	JO
B	23/08/2022	DA SUBMISSION	JO

ARCHITECT
DesignInc
DesignInc Sydney Pty Ltd
Level 14, 85 Castlereagh Street
Sydney NSW 2000 Australia
+61 2 8905 7100
sydney@designinc.com.au

Nominated Architects
Ian Armstrong 7260 | Cathryn Drew-Bredin 7269 | Richard Does 8126 | Mary Anne McGirr 10946

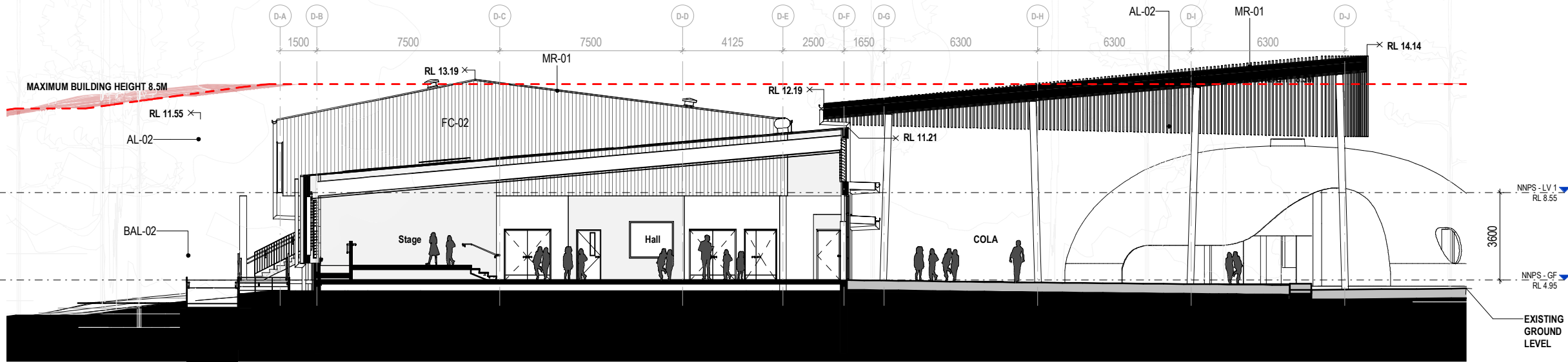
CLIENT
NSW GOVERNMENT | **Education**

PROJECT
NARRABEEN EDUCATION PRECINCT
NAMONA ST, NORTH NARRABEEN NSW 2101

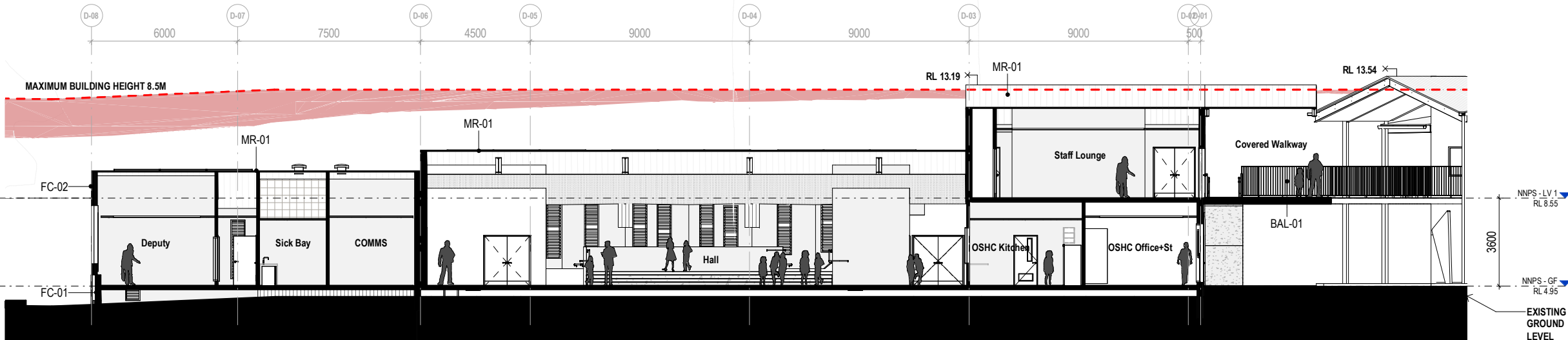
DETAILS
DRAWN JO
CHECKED RF
APPROVED Approver
SCALE
1:100 @ A1

TITLE
NEW HALL & ADMIN - GA ELEVATIONS

DRAWING NUMBER
DA-P-3041
REVISION
B

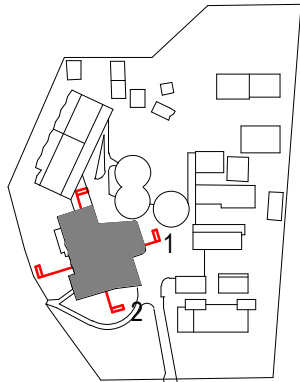


1 NEW HALL & ADMIN - BUILDING SECTION - E/W - DA
SCALE 1:100



2 NEW HALL & ADMIN - BUILDING SECTION - N/S - DA
SCALE 1:100

CODE LEGEND	
CODE	DESCRIPTION
AL-02	ALUMINIUM VERTICAL BATTENS
BAL-01	BALUSTRADE - GALVANISED FINISH
BAL-02	BALUSTRADE W/ KICKRAIL - GALVANISED FINISH
FC-01	CFC CLADDING
FC-02	CFC CLADDING
MR-01	METAL ROOF



0 1 2 3 4 5
SCALE BAR - 1:100
m

DISCLAIMER.
This document may not be secure, may be corrupted in transmission or due to software incompatibility and/or may be amended or altered by third parties after leaving DesignInc Sydney Pty Ltd's possession. DesignInc is not responsible for and accepts no liability for such matters.
Subject only to any conflicting provision within any prior binding agreement by DesignInc Sydney Pty Ltd (such agreement may also contain additional conditions relating to this document and its use):

- The content of this document is confidential and copyright in it belongs to DesignInc Sydney Pty Ltd. The content is permitted only to be opened, read and used by the addressee.
- Users of this document must carry out all relevant investigations and must examine, take advice as required and satisfy themselves concerning the content, correctness and sufficiency of the attachment and its contents for their purposes.
- To the extent permitted by law, all conditions and warranties concerning this document or any use to which they may be put (whether as to quality, outcome, fitness, care, skill or otherwise) whether express or implied by statute, common law, equity, trade, custom or usage or otherwise, are expressly excluded.
- Any person using or relaying document releases & indemnifies and will keep indemnified, DesignInc Sydney Pty Ltd against all claims, liabilities, loss, costs and expenses arising directly or indirectly out of or in connection with such use or reliance including without limitation, any misrepresentation, error or defect in this document.
- Contractors to use Architectural drawings for set out. Contractors to check and verify all dimensions on site prior to construction / fabrication. Figured dimensions take precedence over scaled dimensions.
- Any discrepancies should be immediately referred to the Architect. All work to comply with N.C.C. statutory authorities and relevant Australian Standards.
- Refer also to the Model Disclaimer on the Cover Sheet.

No	DATE	REVISIONS	BY
A	18/08/2022	DA SUBMISSION	JO

ARCHITECT
DesignInc
DesignInc Sydney Pty Ltd
Level 14, 85 Castlereagh Street
Sydney NSW 2000 Australia
+61 2 8905 7100
sydney@designinc.com.au

Nominated Architects
Ian Armstrong 7260 | Cathryn Drew-Bredin 7269 | Richard Does 8126 | Mary Anne McGirr 10946

CLIENT
 **Education**

PROJECT
NARRABEEN EDUCATION PRECINCT
NAMONA ST, NORTH NARRABEEN NSW 2101

DETAILS
DRAWN
CHECKED
APPROVED
Author
Checker
Approver
SCALE
1:100 @ A1

TITLE
NEW HALL & ADMIN - GA SECTIONS

DRAWING NUMBER
DA-P-3042
REVISION
A

NARRABEEN EDUCATION PRECINCT
NARRABEEN NORTH PUBLIC SCHOOL
LANDSCAPE DEVELOPMENT APPLICATION

DRAWING LIST

NUMBER	NAME	REVISION	ISSUED FOR
LA-DA-P-0010	COVER SHEET	A	DEVELOPMENT APPLICATION
LA-DA-P-0020	MASTERPLAN	A	DEVELOPMENT APPLICATION
LA-DA-P-0100	SITE PLAN	A	DEVELOPMENT APPLICATION
LA-DA-P-0110	SHEET LAYOUT	A	DEVELOPMENT APPLICATION
LA-DA-P-0120	TREE REMOVAL	A	DEVELOPMENT APPLICATION
LA-DA-P-0130	CANOPY COVER	A	DEVELOPMENT APPLICATION
LA-DA-P-1000	OVERALL PLAN	A	DEVELOPMENT APPLICATION
LA-DA-P-1001	GA PLAN 01	A	DEVELOPMENT APPLICATION
LA-DA-P-1002	GA PLAN 02	A	DEVELOPMENT APPLICATION
LA-DA-P-1101	FENCING PLAN	A	DEVELOPMENT APPLICATION
LA-DA-P-2001	PLANTING PLAN 01	A	DEVELOPMENT APPLICATION
LA-DA-P-2002	PLANTING PLAN 02	A	DEVELOPMENT APPLICATION
LA-DA-P-3001	SECTIONS/ELEVATION 01	A	DEVELOPMENT APPLICATION
LA-DA-P-3002	SECTIONS/ELEVATIONS 02	A	DEVELOPMENT APPLICATION
LA-DA-P-4001	TYPICAL DETAILS 01	A	DEVELOPMENT APPLICATION
LA-DA-P-5001	PALETTE/SCHEDULES	A	DEVELOPMENT APPLICATION

[illegible]

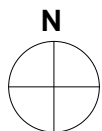
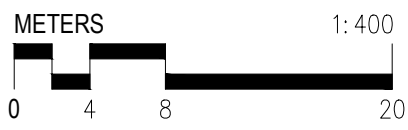
PLOTTED :



KEY

- 1 Main accessible entry ramps off Namona Street, orientated to compliment views to heritage binidomes
- 2 Proposed substation
- 3 Existing vegetation retained
- 4 Passive seating and learning area within natural environment
- 5 Proposed low impact boardwalk for secondary access
- 6 Proposed native tree plantings
- 7 Secondary entry gate retained
- 8 Proposed ramps and walkways for after hours access
- 9 Entry forecourt with second line of defense fencing and sliding gates
- 10 COLA
- 11 Proposed ramps for access to refurbished Block K
- 12 Linemarking Play
- 13 Proposed planter beds with integrated seating around existing trees
- 14 Passive recreation area with native planting and permeable paving around existing trees
- 15 Quiet breakout space with planting opportunity between new buildings
- 16 Nature play elements under existing Fig tree
- 17 Vegetated mound with slide and climbing logs and boulders
- 18 Proposed lawn with native trees
- 19 Existing lawn retained
- 20 Proposed bike parking (50 bike hoops/100 spaces)
- 21 3 proposed flagpoles

Extent of Development Application



© Copyright DesignInc Sydney Pty Limited
Nominated Architects
Ian Armstrong 7269 | Richard Oves 8126 | Cathryn Drew-Broder 7269
Mary Anne McGee 10948

A	18/08/2022	DEVELOPMENT APPLICATION	JG
No	DATE	REVISIONS	BY

PLOTTED :

CLIENT



Education

DesignInc

Level 14, 85 Castlereagh St, Sydney NSW 2000
+61 2 8905 7100 sydney@designinc.com.au

PROJECT NARRABEEN EDUCATION PRECINCT
NARRABEEN NORTH PUBLIC SCHOOL

TITLE MASTERPLAN

DRAWN BY	JG	
SCALES	1:400 @A1	
PLOT DATE	2 August 2022	
PROJECT N°.	P22-024	REVISION
DRAWING N°.	LA-DA-P-0020	A



METERS

04820

1:400

N

© Copyright DesignInc Sydney Pty Limited

Nominated Architects
Ian Armstrong 7269 | Richard Doss 8126 | Cathryn Drew-Broder 7269
Mary Anne McGee 10948

A	19/08/2022	DEVELOPMENT APPLICATION	JG	
No	DATE	REVISIONS	BY	

CLIENT



NSW
GOVERNMENT



Education

DesignInc

Level 14, 85 Castlereagh St, Sydney NSW 2000
+61 2 8905 7100 sydney@designinc.com.au

PROJECT

NARRABEEN EDUCATION PRECINCT
NARRABEEN NORTH PUBLIC SCHOOL

TITLE

SITE PLAN

DRAWN BY	JG	
SCALES	1:400 @A1	
PLOT DATE	2 August 2022	
PROJECT N°.	P22-024	REVISION
DRAWING N°.	LA-DA-P-0100	A

PLOTTED :



LEGEND

- PROPERTY BOUNDARY
- REF APPLICATION
- DESIGNATED DEVELOPMENT APPLICATION
- COASTAL WETLAND ZONE
- STATE HERITAGE CURTILAGE

METERS 0 4 8 20 1:400

N

© Copyright DesignInc Sydney Pty Limited
Nominated Architects
Ian Armstrong 7269 | Richard Doss 8126 | Cathryn Drew-Broder 7269
Mary Anne McGee 10948

No	DATE	REVISIONS	BY
A	19/08/2022	DEVELOPMENT APPLICATION	JG

CLIENT

Education

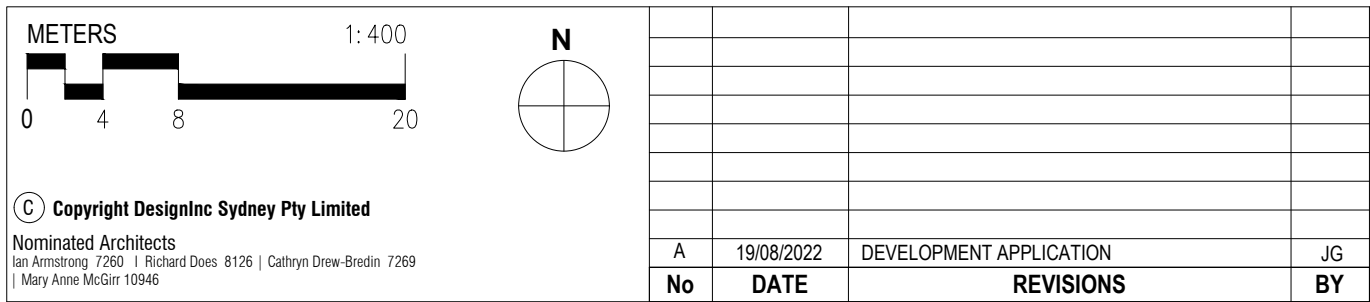
DesignInc







Level 14, 85 Castlereagh St, Sydney NSW 2000
+61 2 8905 7100 sydney@designinc.com.au

PROJECT NARRABEEN EDUCATION PRECINCT
NARRABEEN NORTH PUBLIC SCHOOL

TITLE SHEET LAYOUT

DRAWN BY	JG	
SCALES	1:400 @A1	
PLOT DATE	2 August 2022	
PROJECT N°.	P22-024	REVISION
DRAWING N°.	LA-DA-P-0110	A



 PROPERTY BOUNDARY
 REF APPLICATION
 DESIGNATED DEVELOPMENT APPLICATION
 STATE HERITAGE CURTLAGE
 EXISTING TREES TO BE RETAINED
 PROPOSED TREES

TREE CALCULATIONS - NNPS		TOTAL
Existing		
Canopy Area (m2)		11,988m2
Trees		184
Retained		
Canopy Area (m2)		9,241m2
Trees		145
Removed (Proposed for removal)		
Canopy Area (m2)		2,747m2
Trees		39
Proposed (New trees proposed)		
Canopy Area (m2)		1,006m2
Trees		38
Net Result		
Canopy Area (m2)		10,247m2
Trees		182

- TOTAL EXISTING CANOPY AREA DERIVED FROM CANOPY AREA TO BE RETAINED (m²) AND CANOPY AREA (m²) TO BE REMOVED. THIS FIGURE INCLUDES SOME OVERLAPPING TREE CANOPIES
- CANOPY AREAS HAVE ONLY BEEN ASSESSED WITHIN PROPERTY BOUNDARY.
- PROPOSED TREE CANOPY BASED UPON ASSUMED CANOPY AT MATURITY.
- TREES SUBJECT TO REMOVAL WITHIN DESIGNATED DEVELOPMENT SUBJECT TO ADVICE FROM PROJECT ARBORIST/ECOLOGIST.
- REPLACEMENT OF REMOVED TREE CANOPIES SPREAD ACROSS BOTH THE PUBLIC SCHOOL AND HIGH SCHOOL.



- LEGEND**
- PROPERTY BOUNDARY
 - EXISTING TREE TO BE RETAINED
 - PROPOSED TREES
 - REF APPLICATION
 - DESIGNATED DEVELOPMENT APPLICATION

- HARDWORKS**
- PROPOSED CONCRETE PAVING (BROOM FINISHED)
 - PROPOSED CONCRETE RETAINING WALL
 - EXISTING FENCE & GATES
 - PROPOSED FENCE & GATES

- SOFTWORKS**
- EXISTING VEGETATION RETAINED AS IS
 - PROPOSED GARDEN BEDS

- FURNITURE/FIXTURES**
- PROPOSED BIKE HOOPS
 - PROPOSED SANDSTONE LOG WITH TIMBER TOP

KEY PLAN



METERS		1:100
0 1 2 5		
N		
© Copyright DesignInc Sydney Pty Limited		
Nominated Architects		
Ian Armstrong (726) Richard Doss (8126) Cathryn Drew-Broder (7269)		
Mary Anne McGee (10946)		
A		18/08/2022
DEVELOPMENT APPLICATION		JG
No		DATE
REVISIONS		BY

PLOTTED :

CLIENT



Education

DesignInc

Level 14, 85 Castlereagh St, Sydney NSW 2000
+61 2 8905 7100 sydney@designinc.com.au

PROJECT NARRABEEN EDUCATION PRECINCT
NARRABEEN NORTH PUBLIC SCHOOL

TITLE GENERAL ARRANGEMENT 01

DRAWN BY

JG

SCALES

1:100 @A1

PLOT DATE

2 August 2022

PROJECT N°.

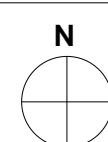
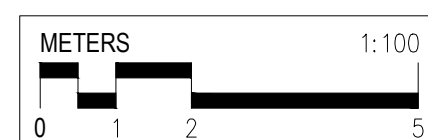
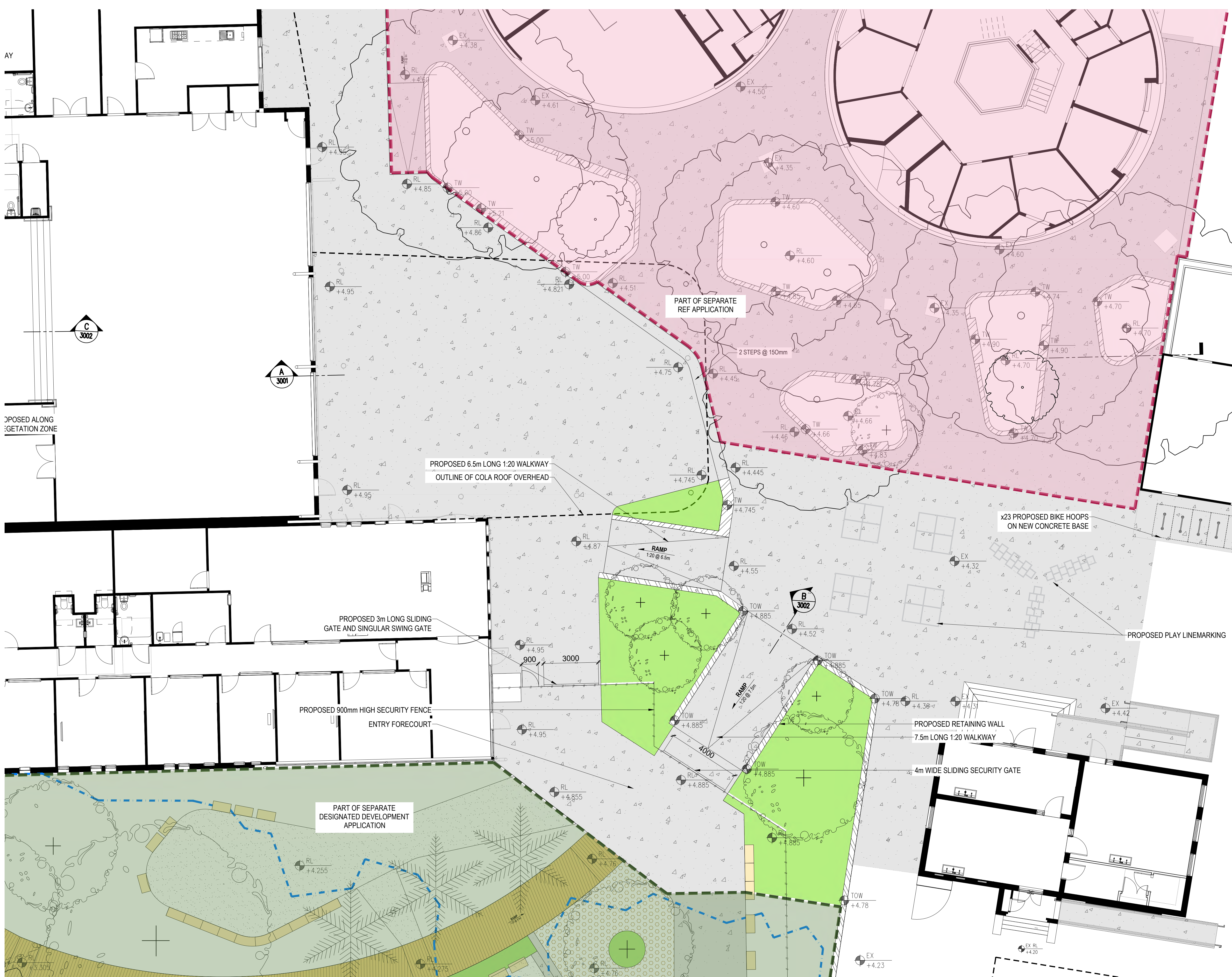
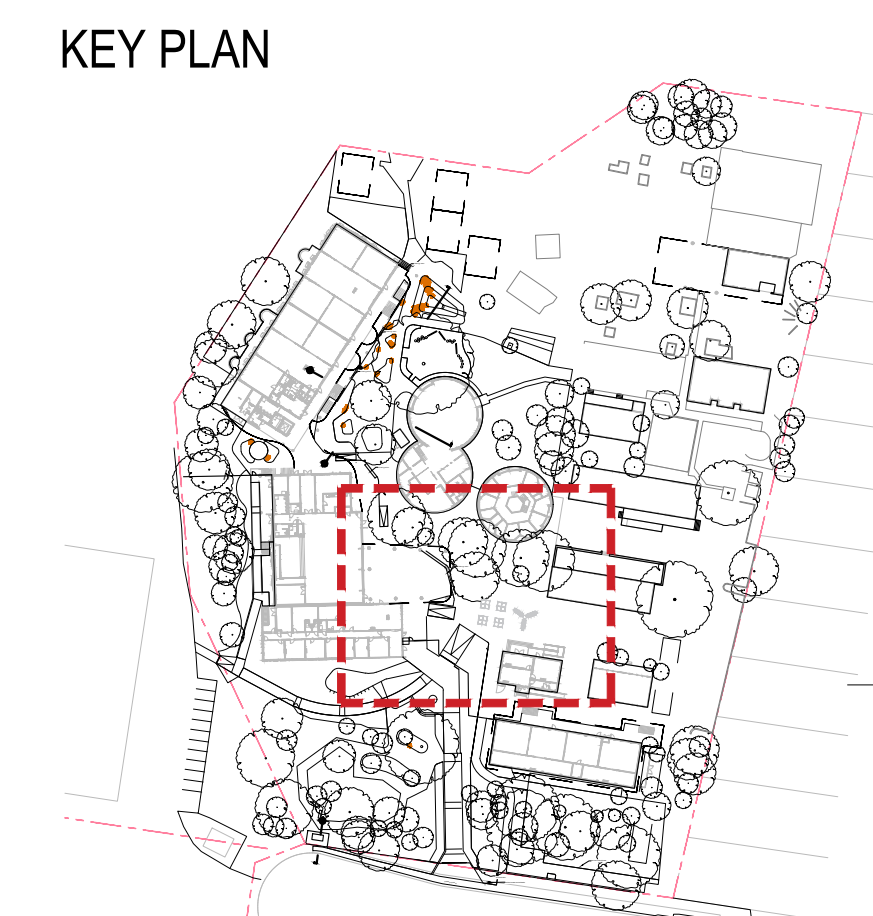
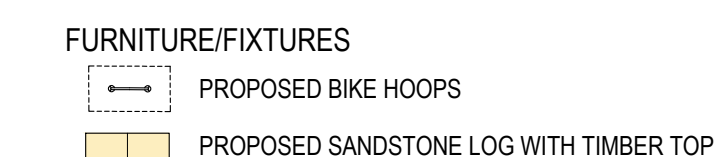
P22-024

REVISION

DRAWING N°.

LA-DA-P-1001

A



© Copyright DesignInc Sydney Pty Limited
Nominated Architects
Ian Armstrong 7260 | Richard Does 8126 | Cathryn Drew-Bredin 7268
| Mary Anne McGiv 10046

A	19/08/2022	DEVELOPMENT APPLICATION	JG
No	DATE	REVISIONS	BY

PLOTTED :

CLIENT



Education

DesignInc

Level 14, 85 Castlereagh St, Sydney NSW 2000
+61 2 8905 7100 sydney@designinc.com.au

PROJECT NARRABEEN EDUCATION PRECINCT
NARRABEEN NORTH PUBLIC SCHOOL

TITLE GENERAL ARRANGEMENT 02

DRAWN BY JC

SCALES	1:100 @A1
--------	-----------

PLOT DATE	2 August 2022
-----------	---------------

PROJECT N°	P22-024
------------	---------

DRAWING N°.	I A-DA-P-1002
-------------	---------------

	REVISION

	B
--	----------



LEGEND

- EXISTING 2.1m FENCE & GATE
- PROPOSED 2.1m FENCE AND GATE
- PROPOSED 1.8m FENCE AND GATE



© Copyright DesignInc Sydney Pty Limited
Nominated Architects
Ian Armstrong 7269 | Richard Doves 8126 | Cathryn Drew-Broder 7269
Mary Anne McGee 10946

A	19/08/2022	DEVELOPMENT APPLICATION	JG
No	DATE	REVISIONS	BY

PLOTTED :

CLIENT



Education

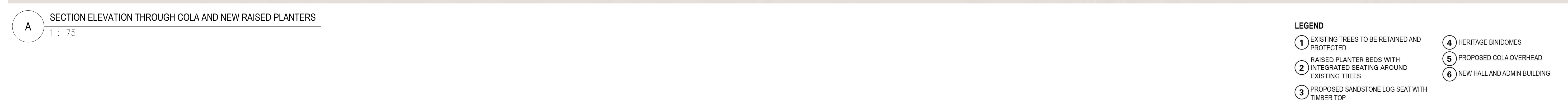
DesignInc

Level 14, 85 Castlereagh St, Sydney NSW 2000
+61 2 8905 7100 sydney@designinc.com.au

PROJECT NARRABEEN EDUCATION PRECINCT
NARRABEEN NORTH PUBLIC SCHOOL

TITLE FENCING PLAN 01

DRAWN BY	JG	
SCALES	1:200 @A1	
PLOT DATE	2 August 2022	
PROJECT N°.	P22-024	REVISION
DRAWING N°.	LA-DA-P-1101	A



SECTION ELEVATION THROUGH COLA AND NEW RAISED PLANTERS

LEGEND

- | | |
|--|--------------------------------------|
| 1 EXISTING TREES TO BE RETAINED AND PROTECTED | 4 HERITAGE BINDOMES |
| 2 RAISED PLANTER BEDS WITH INTEGRATED SEATING AROUND EXISTING TREES | 5 PROPOSED COLA OVERHEAD |
| 3 PROPOSED SANDSTONE LOG SEAT WITH TIMBER TOP | 6 NEW HALL AND ADMIN BUILDING |



Education

DesignInc

Level 14, 85 Castlereagh St, Sydney NSW 2000
+61 2 8905 7100 sydney@designinc.com.au

PROJECT	NARRABEEN EDUCATION PRECINCT NARRABEEN NORTH PUBLIC SCHOOL
---------	---

TITLE SECTIONS 01

DRAWN BY JG

SCALES	1:75 @A1
--------	----------

PLOT DATE	2 August 2022
-----------	---------------

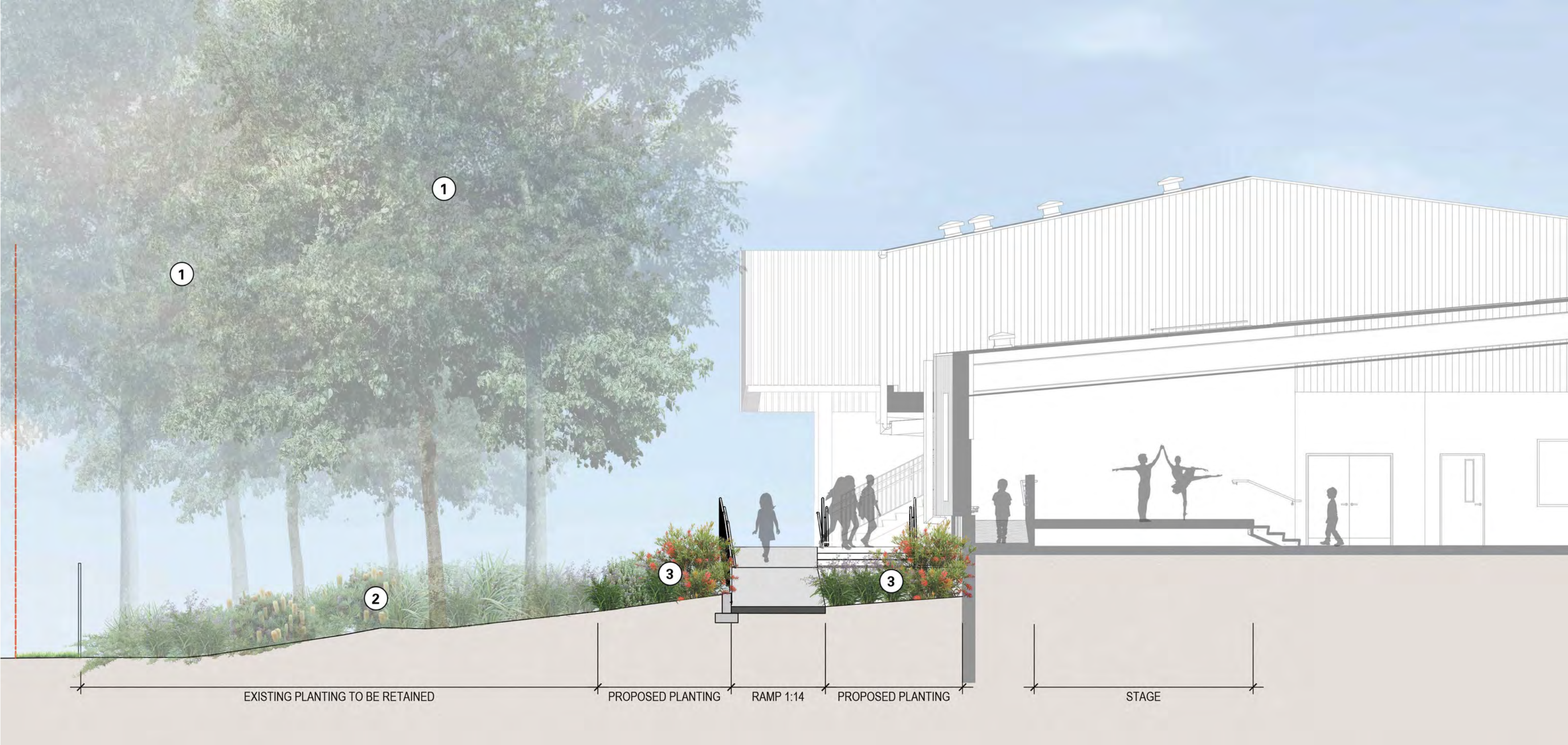
PROJECT N°	P22-024
------------	---------

DRAWING N°.	LA-DA-P-3001
-------------	--------------

	REVISION
--	----------



B SECTION ELEVATION THROUGH ENTRY FORECOURT AND ENVIRONMENTAL ZONE
1 : 75



C SECTION ELEVATION THROUGH AFTER HOUR ACCESS RAMPS
1 : 75

- LEGEND**
- 1 EXISTING TREES TO BE RETAINED AND PROTECTED
 - 2 PROPOSED TREES AND PALMS
 - 3 PROPOSED NATIVE PLANTING
 - 4 PROPOSED WALL
 - 5 NEW ADMIN BUILDING
 - 6 PROPOSED 1.8m FENCE WITH SLIDING GATES

- LEGEND**
- 1 EXISTING TREES TO BE RETAINED AND PROTECTED
 - 2 EXISTING VEGETATION
 - 3 PROPOSED NATIVE PLANTING

METERS 1:75

0 .75 1.5 3

N

© Copyright DesignInc Sydney Pty Limited
Nominated Architects
Ian Armstrong 7269 | Richard Doss 8126 | Cathryn Drew-Broder 7269
| Mary Anne McGee 10948

No	DATE	REVISIONS	BY
A	18/08/2022	DEVELOPMENT APPLICATION	JG

CLIENT

NSW GOVERNMENT

Education

DesignInc

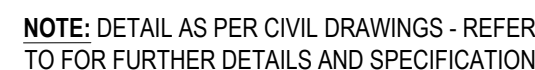
Level 14, 85 Castlereagh St, Sydney NSW 2000
+61 2 8905 7100 sydney@designinc.com.au

PROJECT NARRABEEN EDUCATION PRECINCT
NARRABEEN NORTH PUBLIC SCHOOL

TITLE SECTIONS 02

DRAWN BY	SCALES	PLOT DATE	PROJECT N°.	DRAWING N°.	REVISION
JG	1:100 @A1	2 August 2022	P22-024	LA-P-3002	

PLOTTED :



1 : 10

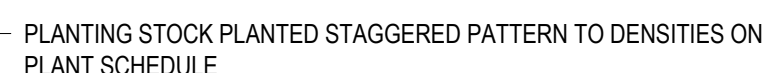


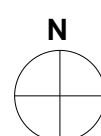
1 : 20



1 · 20


$$1 \cdot 10$$


1 · 10
$$1 \cdot 10$$

$$1 \cdot 20$$


Copyright DesignInc Sydney Pty Limited
Nominated Architects
Ian Armstrong 7260 | Richard Does 8126 | Cathryn Drew-Bredin 7265
| Mary Anne McGirr 10346

A	19/08/2022	DEVELOPMENT APPLICATION	JG
No	DATE	REVISIONS	BY

PLOTTED :

CLIENT



Education

DesignInc

Level 14, 85 Castlereagh St, Sydney NSW 2000
+61 2 8905 7100 sydney@designinc.com.au

PROJECT NARRABEEN EDUCATION PRECINCT
NARRABEEN NORTH PUBLIC SCHOOL

TITLE TYPICAL DETAILS 01

DRAWN BY JG

SCALES	1:100 @A1
--------	-----------

PLOT DATE	2 August 2022
-----------	---------------

PROJECT N°.	P22-02.
-------------	---------

DRAWING N°.	LA-DA-P-4001
-------------	--------------

REVISION	
----------	--

