

[illegible]

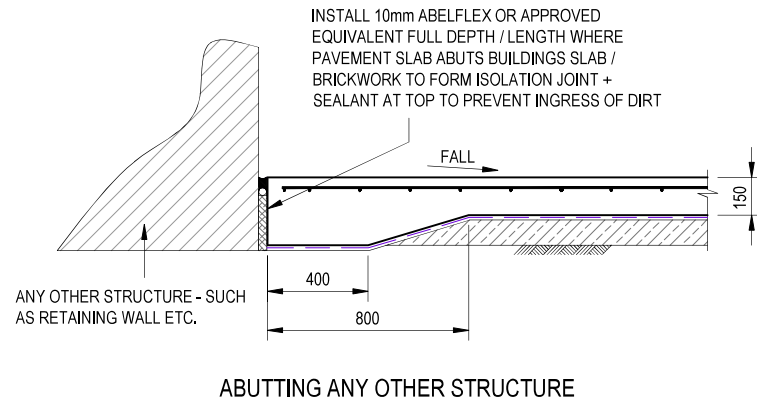
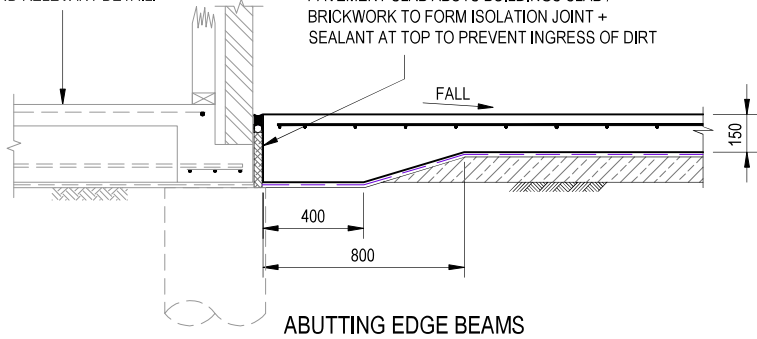
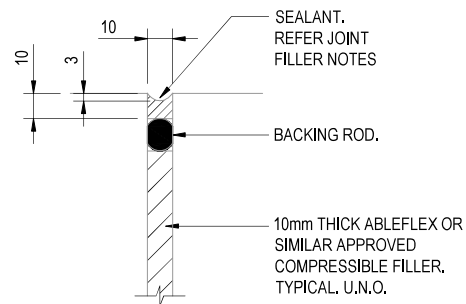


Diagram illustrating the sealant application and sawcut depths for a concrete joint repair:

- SEALANT. REFER JOINT FILLER NOTES**: Points to the sealant material being applied.
- 20**: Dimension indicating the depth of the sealant application.
- T/4**: Dimension indicating the depth of the sealant application relative to the joint width.
- BACKING ROD**: Points to the rod used to support the sealant.
- 3 (INITIAL SAWCUT)**: Dimension indicating the depth of the initial sawcut.
- 10 (FINAL SAWCUT)**: Dimension indicating the depth of the final sawcut.
- 2**: Dimension indicating the width of the sealant application.
- 6**: Dimension indicating the width of the sealant application.



(e.g. SAWN JOINT)

(e.g. DWELLED / ISOLATION JOINT)

NON TRAFFIC AREAS
APPLY "SIKAFLEX II FC" (SIKA PRODUCT) WITH PRIMER "SP1" (COLOURED TO SUIT PAVEMENT), INSTALLED TO MANUFACTURERS SPECIFICATION
(OR SIMILAR APPROVED). USE BACKING ROD. REFER TO TYPICAL DETAILS.

TRAFFIC AREAS (IN SERVICE)
INSERT BACKING RODS IN ALL JOINTS IMMEDIATELY AFTER FINISHING SAW CUTTING. JUST PRIOR TO PRACTICAL COMPLETION, REMOVE ROD & THOROUGHLY CLEAN JOINT IN PREPARATION OF PRIMER / SEALANT INSTALLATION. INSERT NEW BACKING ROD & FILL JOINT WITH 'SIKADUR 51' (SIKA PRODUCT) CURING AND INSTALLATION OF PRIMER / SEALANT TO BE IN ACCORDANCE WITH MANUFACTURERS SPECIFICATIONS.

<div> <div>A</div> <div>S.V.</div> </div>		<div> <div>ISSUED FOR CC</div> <div>AMENDMENTS</div> </div>		<div> <div>14.02.24</div> <div>C. KHOUDAIR</div> </div>		<div> <div>DESIGNED BY</div> <div>Engineering & Design and the Property of WATERPVT LTD. It must not be reproduced or further disseminated without the written consent of WATERPVT LTD.</div> <div> <div>DATE</div> <div>APPROVED BY</div> </div> </div>		<div> <div>  </div> <div> <div>DESIGN - PROJECT MANAGEMENT</div> <div>ANTER PVT LTD ATD ALTA VINDYA VANGA Y TRUST TA VOLUNT CIRCLE, HOORWAT 21 M-1411 L-11 8th FLOOR E BRIDGEVIEW COLONY W/ WINDVIEW COLONY</div> </div> </div>		<div> <div>  </div> <div> <div>DESIGNED BY</div> <div>CHARBIL KHOUDAIR 86 (D)th Avenue Midland Office Bldg 4000 Bayswater Road WILLOWDALE VIC 3159 Australia P: 03 9516 1000 E: charbil.kh@vdand.com.au W: www.vdand.com.au</div> </div> </div>		<div> <div>CLIENT</div> <div>MRS. GIULIETTA CAMPANELLA</div> </div>		<div> <div>PROJECT</div> <div>PROPOSED DRIVEWAY 'PART AREA' 17 MARETIMO STREET, BALGOVILLA, NSW, 2093</div> </div>		<div> <div>DRAWING STATUS</div> <div>ISSUED FOR CC</div> </div>		<div> <div> <div>DESIGNED</div> <div>CK</div> <div>DRAWN</div> <div>S.V.</div> </div> <div> <div>CHECKED</div> <div>CHARBIL KHOUDAIR</div> <div>SCALE</div> <div>1:100 A3</div> <div>DATE</div> <div>FEB 2024</div> </div> </div>		<div> <div>DRAWING TITLE</div> <div>RIGID PAVEMENT DETAILS (IF REQUIRED)</div> </div>		<div> <div> <div>DRAWING No.</div> <div>5012</div> </div> <div> <div>REV/BY</div> <div>A</div> </div> </div>	
---	--	---	--	---	--	--	--	--	--	--	--	---	--	--	--	---	--	---	--	---	--	--	--