


STORMWATER NOTES

- 1. ALL PIPES AND WORKMANSHIP ARE TO BE SOLVENT WELDED AND INSTALLED IN ACCORDANCE WITH RELEVANT PARTS OF AS/NZS 3500.
- 2. ALL PIPES ARE MIN 100mm DIA U.N.O LAID AT MIN. 1% GRADE
- 3. ALL DOWN PIPES SHALL BE 100mm DIA SOLVENT WELDED
- 4. EAVE GUTTERS SHALL HAVE MIN CROSS-SECT AREA 8500mm². BOX MIN 300WX160D
- 5. PLUMBER MUST INVESTIGATE ALL UNDERGROUND SERVICES LOCATIONS AND LEVELS BY CONTACTING "DIAL BEFORE YOU DIG" PRIOR TO WORKS COMMENCING. ANY CONFLICT OR DISCREPENCIES WITH DESIGN, THE ENGINEER SHALL BE CONSULTED FOR RESOLUTION.
- 6. THE LOCATION OF PIPELINE AND D.P SHOWN ARE NOT RESTRICTIVE. THEY CAN BE VARIED TO SUIT SITE CONDITIONS AS LONG AS THE TOTAL AREA DRAINING TO EACH PIPE/D.P REMAINS ESSENTIALLY THE SAME AND MINIMUM GRADIENT IS MAINTAINED.
- 7. THE DESIGN COVERS THE COLLECTION & DISPOSAL OF SURFACE WATER ONLY. CONSULT OTHER PROFESSIONALS FOR THE COLLECTION & DISPOSAL OF SEEPAGE & SUBSURFACE WATER FLOWS WHERE REQUIRED.
- 8. ALL GUTTERS AND ROOF FLASHING INSTALLATION SHALL BE IN AACCORDANCE WITH RELEVANT SECTIONS OF AS3500.3 REGARDING OVERFLOW PROTECTION.

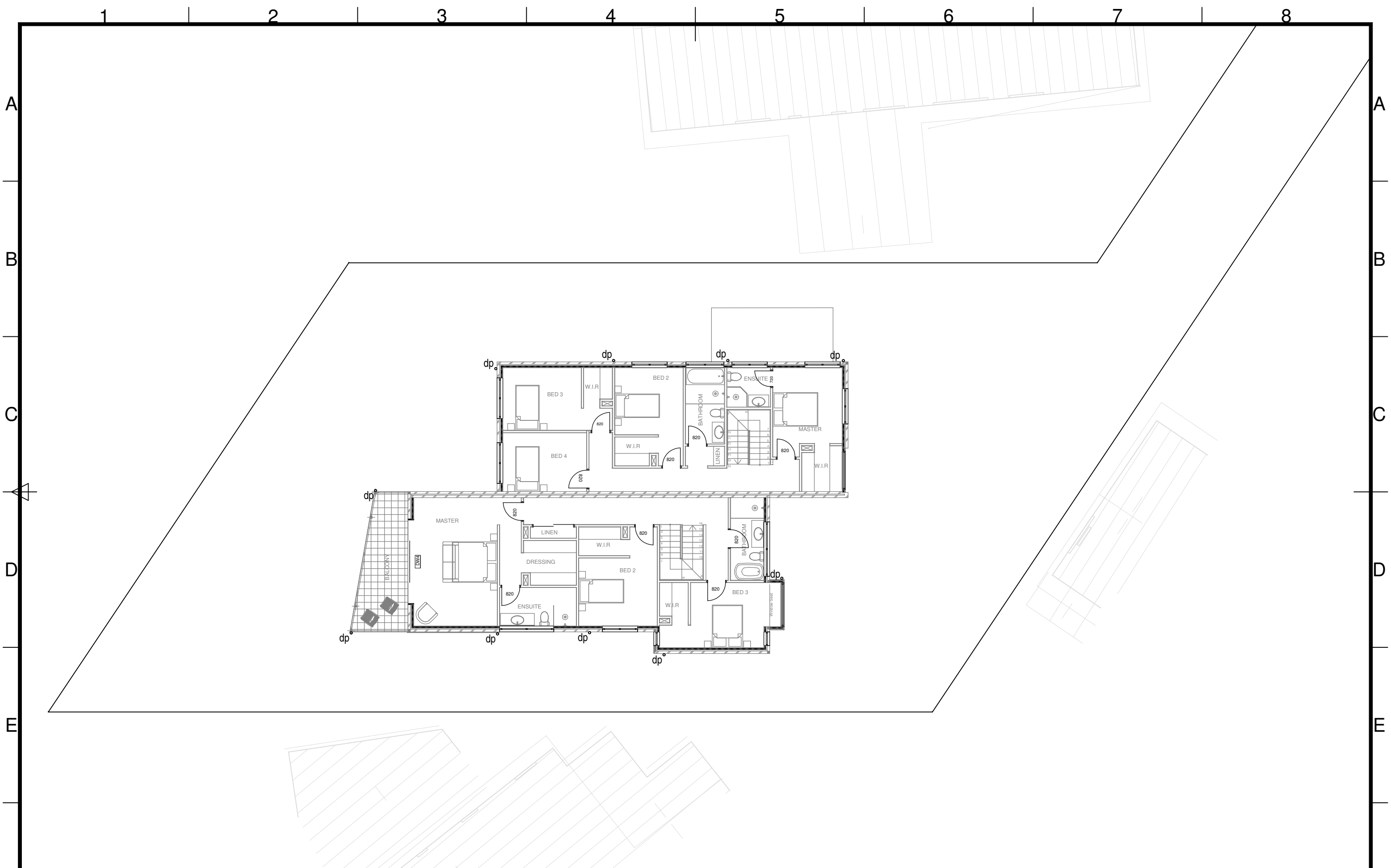
RAIN WATER TANKS

- 1. ONLY ROOF RUNOFF IS TO BE DIRECTED TO RAINWATER TANK
- 2. SYDNEY WATER SUPPLY TO TOP UP TANKS SHALL BE INSTALLED TO SYDNEY WATER REQUIREMENTS.
- 3 CONNECTION FOR INTERNAL REUSE SHALL BE AS PER D.A CONSENT OR BASIX REQUIREMENTS.
- 4. ALL RAINWATER TANKS AND ASSOCIATED PIPE WORKS ARE TO BE LABEL LED NON-POTABLE - NOT FOR DRINKING.
- 5. PROVIDE A PROPRIETOR CONTROLLER BOX TO REGULATE WATER SUPPLY FROM RAINWATER TANKS FOR INTERNAL REUSE.
- 6.PROVIDE LEAF GUARD TO ALL GUTTERS & MOSQUITOES NETTING TO R/W TANKS INLET, WITH APPROPRIATE AIR GAP.
- 7. RAINWATER TANK INSTALLATION & THEIR ASSOCIATED FITTINGS & FIXTURES SHALL COMPLY WITH RELEVANT SECTIONS OF AS/NZS 2179-1994 & AS 2180-1986.

F	Rev	Description	Eng	Draft	Date	Client Peninsula Homes				Title ROOF STORMWATER		<div> DEVELOPMENT ENGINEERING SOLUTIONS</div> <div>21 GRAND AVE, WESTMEAD 2145 P 8898 9830 M 0411506738</div>	F
						Drawn MN	Designed MN	Checked MN	Scale 1:150	Project Proposed Duplex at 4B Holloway Place, Curl Curl			
					Prj No. 240925	Drw No. C01	Issue A	Date 23.6.25					
A	FOR D.A SUBMISSION	MN	MN	15.7.25									

DEVELOPMENT ENGINEERING SOLUTIONS

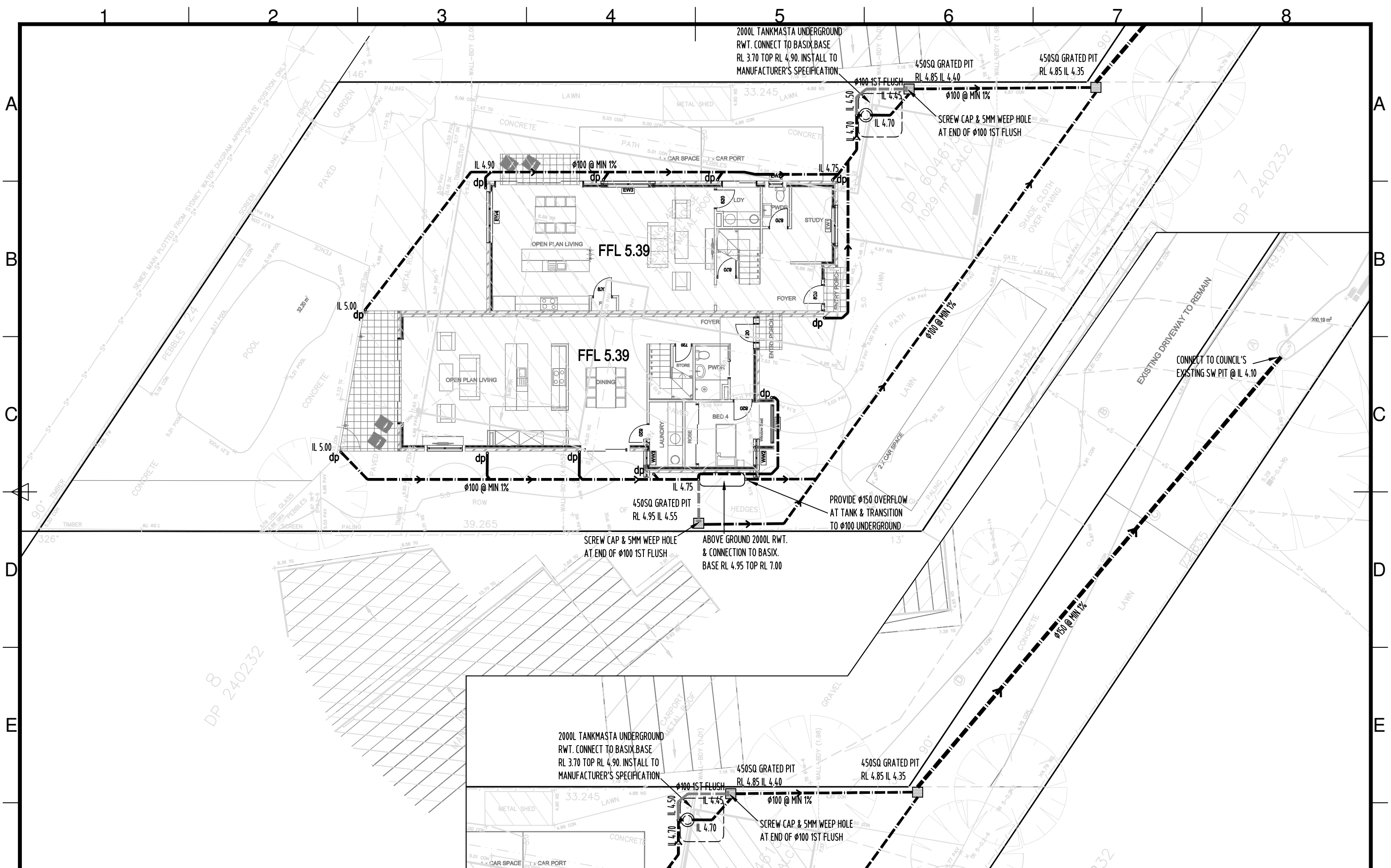
21 GRAND AVE, WESTMEAD 2145 P 8898 9830 M 0411506738



Rev	Description	Eng	Draft	Date	Client	Peninsula Homes			Title	FIRST FLOOR DRAINAGE		
						Drawn	Designed	Checked	Scale	Project Proposed Duplex at 4B Holloway Place, Curl Curl		
						MN	MN	MN	1:150			
						Prj No.	Drw No.	Issue	Date			
A	FOR D.A SUBMISSION	MN	MN	15.7.25		240925	C02	A	23.6.25			

DEVELOPMENT ENGINEERING SOLUTIONS

21 GRAND AVE, WESTMEAD 2145 P 8898 9830 M 0411506738



F	Rev	Description	Eng	Draft	Date	Client Peninsula Homes				Title GROUND FLOOR DRAINAGE				<div><div><div></div><div></div><div></div><div></div></div><div>DEVELOPMENT ENGINEERING SOLUTIONS</div><div>21 GRAND AVE, WESTMEAD 2145 P 8898 9830 M 0411506738</div></div>				F
						Drawn MN	Designed MN	Checked MN	Scale 1:150	Project Proposed Duplex at 4B Holloway Place, Curl Curl								
						Prj No. 240925	Drw No. C03	Issue A	Date 23.6.25									
	A	FOR D.A SUBMISSION	MN	MN	15.7.25													
1		2		3								6		7		8		