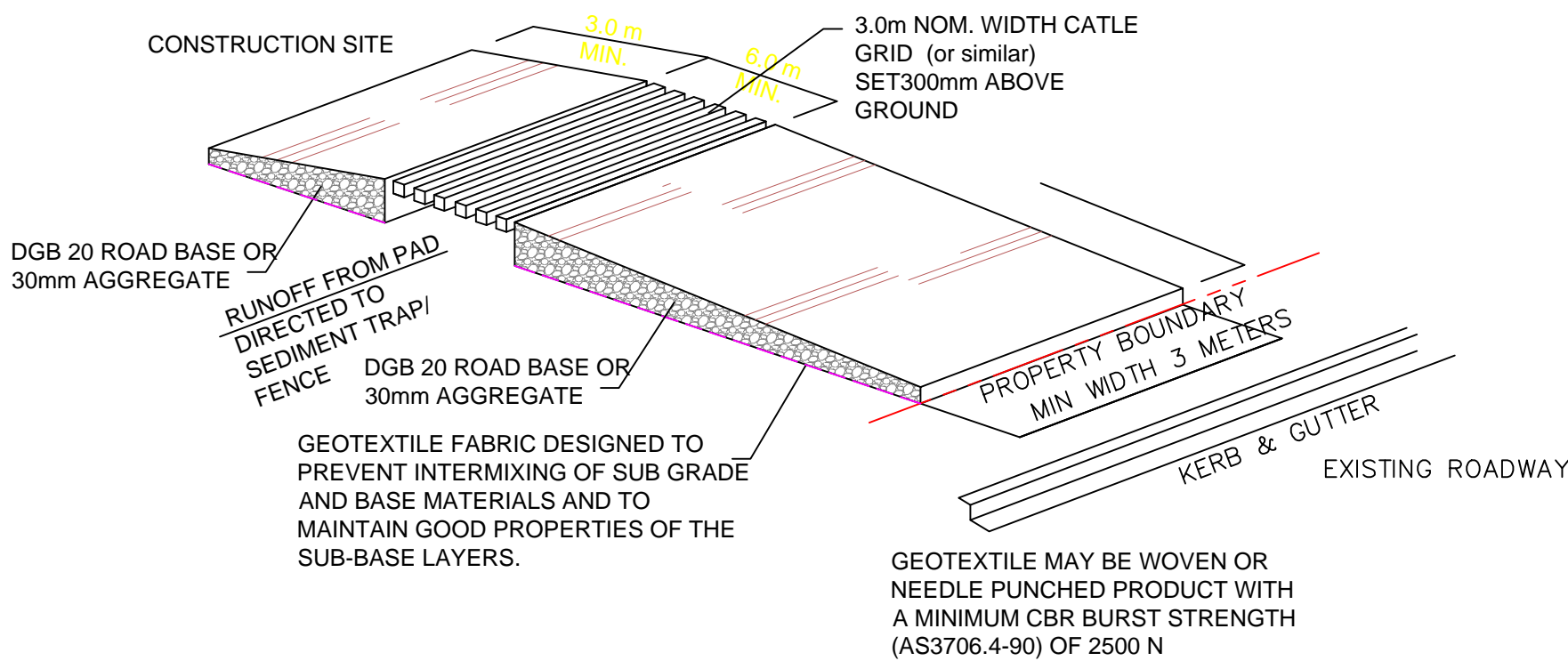


SEDIMENT & EROSION CONTROL PLAN

~ 1:100

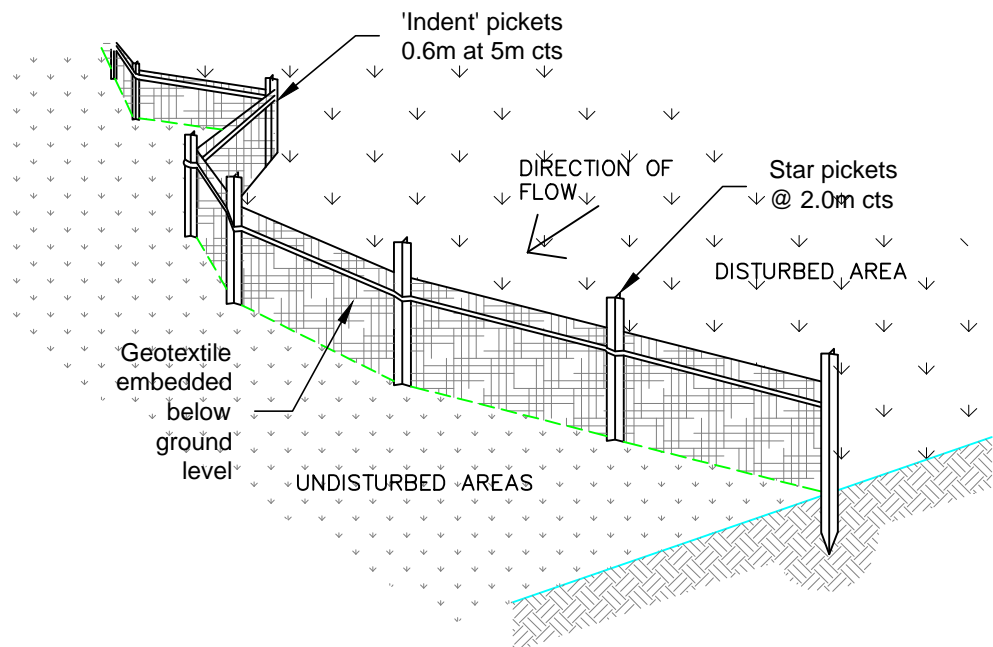
All excavation works to be carried out in a safe building manner in accordance with NCC and industry standards etc.
Sediment and erosion control measures to be installed before any excavation works and monitored / improved continually to prevent sediment leaving the site, including immediate cleaning of spillage etc from vehicles leaving the property.
All material stock piles to be protected from rainfall and runoff at all times.



TEMPORARY CONSTRUCTION ACCESS SEDIMENT TRAP

NOTES:

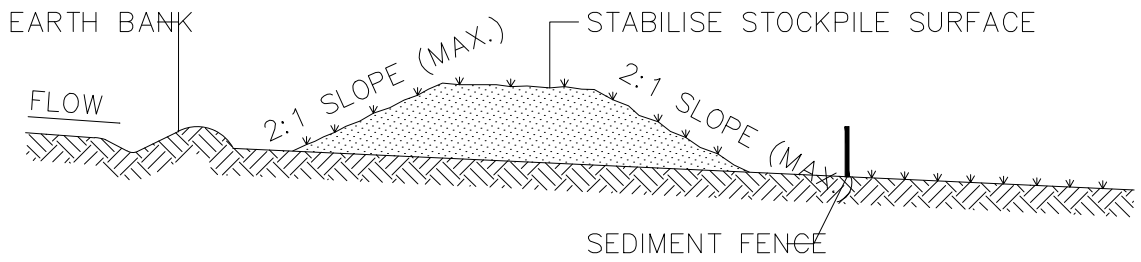
- THIS DEVICE IS TO BE LOCATED AT ALL EXITS FROM CONSTRUCTION SITE.
- THIS DEVICE IS TO BE REGULARLY CLEANED OF DEPOSITED MATERIAL SO AS TO MAINTAIN A 50mm DEEP SPACE BETWEEN PLANKS.
- ANY UNSEALED ROAD BETWEEN THIS DEVICE AND NEAREST ROADWAY IS TO BE TOPPED WITH 100mm THICK 40-70mm SIZE AGGREGATE.
- ALTERNATIVELY, THREE(3) PRECAST CONCRETE CATTLE GRIDS (AS MANUFACTURED BY 'HUMES CONCRETE MAY BE USED. 1, 2 & 3 ABOVE ALSO APPLY.



SEDIMENT FENCE

SEDIMENT FENCE CONSTRUCTION NOTES:

- CONSTRUCT SEDIMENT FENCES AS CLOSE AS POSSIBLE TO BEING PARALLEL TO THE CONTOURS OF THE SITE, BUT WITH SMALL RETURNS AS SHOWN IN THE DRAWING TO LIMIT THE CATCHMENT AREA OF ANY ONE SECTION. THE CATCHMENT AREA SHOULD BE SMALL ENOUGH TO LIMIT WATER FLOW.
- CUT A 150mm DEEP TRENCH ALONG THE UPSLOPE LINE OF THE FENCE FOR THE BOTTOM OF THE FABRIC TO BE ENTRENCHED.
- DRIVE 1.5m LONG STAR PICKETS INTO GROUND @ 2.5m INTERVALS (MAX.) AT THE DOWNSLOPE EDGE OF THE TRENCH. ENSURE ANY STAR PICKETS ARE FITTED WITH SAFETY CAPS.
- FIX SELF-SUPPORTING GEOTEXTILE TO THE UPSLOPE SIDE OF THE POSTS ENSURING IT GOES TO THE BASE OF THE TRENCH. FIX THE GEOTEXTILE WITH WIRE TIES OR AS RECOMMENDED BY THE MANUFACTURER. ONLY USE GEOTEXTILE SPECIFICALLY PRODUCED FOR SEDIMENT FENCING. THE USE OF SHADE CLOTH FOR THIS PURPOSE IS NOT SATISFACTORY.
- JOIN SECTIONS OF FABRIC AT A SUPPORT POST WITH A 150mm OVERLAP.
- BACKFILL THE TRENCH OVER THE BASE OF THE FABRIC AND COMPACT IT THOROUGHLY OVER THE GEOTEXTILE.



STOCKPILE CONSTRUCTION NOTES:

- PLACE STOCKPILES MORE THAN 2 (PREFERABLY 5) METRES FROM EXISTING VEGETATION, CONCENTRATED WATER FLOW, ROADS AND HAZARD AREAS.
- CONSTRUCT ON THE CONTOUR AS LOW, FLAT, ELONGATED MOUNDS.
- WHERE THERE IS SUFFICIENT AREA, TOPSOIL STOCKPILES SHALL BE LESS THAN 2 METRES IN HEIGHT.
- WHERE THEY ARE TO BE PLACED FOR MORE THAN 10 DAYS, STABILISE FOLLOWING THE APPROVED E.S.C.P. OR S.W.M.P. TO REDUCE THE C-FACTOR TO LESS THAN 0.10.
- CONSTRUCT EARTH BANKS ON THE UPSLOPE SIDE TO DIVERT WATER AROUND STOCKPILES AND SEDIMENT FENCES 1 TO 2 METRES DOWNSLOPE.

STOCKPILES

SCALE: N.T.S.

ISSUE:

Prelim DA 30. 09. 2019 Issued for comment
07. 11. 2019 Issued for DA submission

Barrenjoey Consulting Engineers pty ltd
Stormwater Structural Civil
PO Box 672
Avalon NSW 2107
M: 0418 620 550
E: lucashce@bigpond.com
ABN: 15124694917
ACN: 124694917

PROJECT:

PROPOSED NEW RESIDENCE
12B JOHN STREET
AVALON

DRAWING :

SEDIMENT & EROSION
CONTROL PLAN

Job No :

18100512B

Drawing No

CIV1DA

Document Certification

Barrenjoey Consulting Engineers pty ltd
per
Lucas Molloy MIEA CPEng NER Director