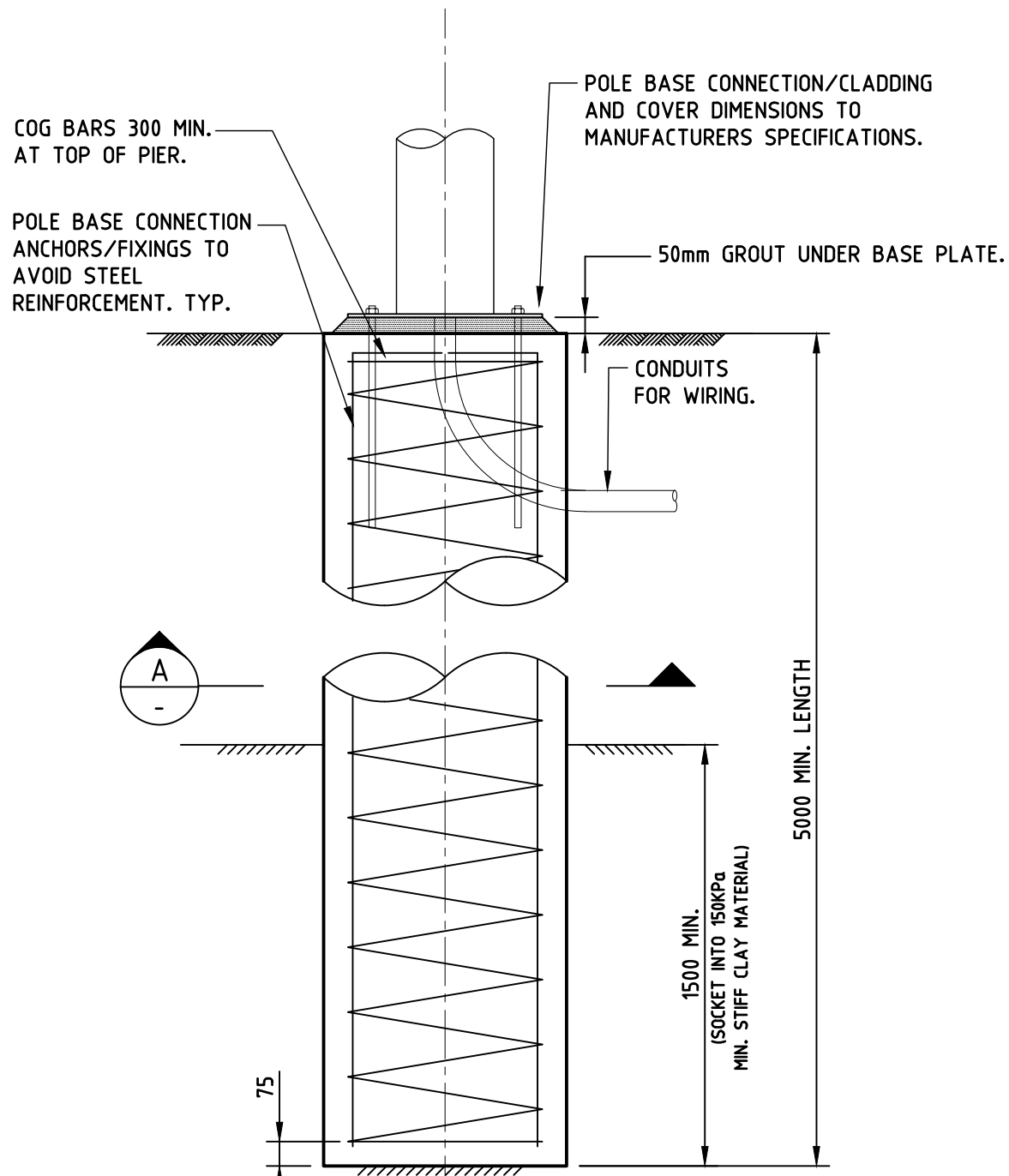
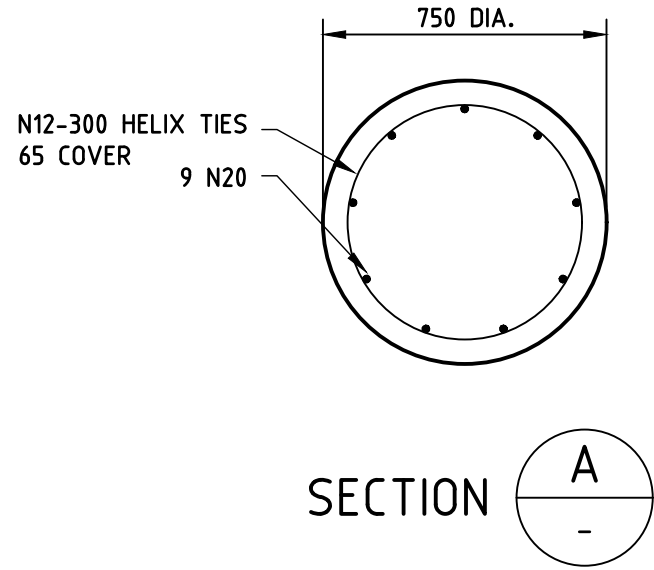


BORED PIER NOTES

- P1 ALL DESIGN, WORKMANSHIP AND MATERIALS SHALL BE IN ACCORDANCE WITH AS2159 AND AS3600 CURRENT EDITIONS WITH AMENDMENTS EXCEPT WHERE VARIED BY CONTRACT DOCUMENTS
- P2 TEMPORARY CASINGS SHALL BE USED, WHERE REQUIRED, AT THE CONTRACTORS EXPENSE.
- P3 BORE HOLES SHALL BE CLEANED OF ANY LOOSE MATERIAL PRIOR TO PLACING CONCRETE OR REINFORCEMENT.
- P4 WHERE CASTING THE PIERS A TREMIE OR CONCRETE PUMP HOSE SHALL BE USED TO LIMIT THE FREE FALL OF CONCRETE TO 1.0 METRE MAX.
- P5 ANY GROUND WATER PRESENT SHOULD BE PUMPED OUT PRIOR TO PLACEMENT OF CONCRETE.
- P6 THE CONTRACTOR IS TO COORDINATE THE LOCATION OF ALL UNDERGROUND SERVICES AND TO RESPONSIBLE FOR ENSURING THAT THESE ARE EITHER AVOIDED OR RELOCATED AS APPROPRIATE.
- P7 BASE OF SOCKET TO BE 2000 BELOW ANY SERVICES LOCATED WITHIN 1000mm OF PIER.
- P8 WHERE 150 kPa MIN. MATERIAL FOR PIERS IS NOT AVAILABLE CONSULT WOOLACOTTS FOR ALTERNATIVE DESIGN.
- P9 INSTALLATION
- A. PIERS SHALL BE LOCATED CENTRAL UNDER COLUMNS UNLESS NOTED OTHERWISE.
- B. TOLERANCE  
PIER POSITION AT CUT OFF: 75mm  
VERTICAL ALIGNMENT: 2%
- C. ROUGHEN THE SURFACE AT CUT-OFF LEVEL. CLEAN AND STRAIGHTEN ANY PROJECTING REINFORCEMENT.
- D. ON COMPLETION THE CONTRACTOR SHALL SUBMIT FOR APPROVAL THE FOLLOWING:
- i) CERTIFICATION THAT ALL PIERS HAVE BEEN INSTALLED IN ACCORDANCE WITH THE APPROVED DETAILS AND WITHIN THE SPECIFIED TOLERANCE.
- ii) SURVEY DRAWINGS SHOWING THE AS INSTALLED POSITION OF ALL PIERS AT CUT OFF LEVEL, INCLUDING THE OFFSET FROM THE SET OUT POSITION (IF ANY).



TYPICAL P1 DETAIL

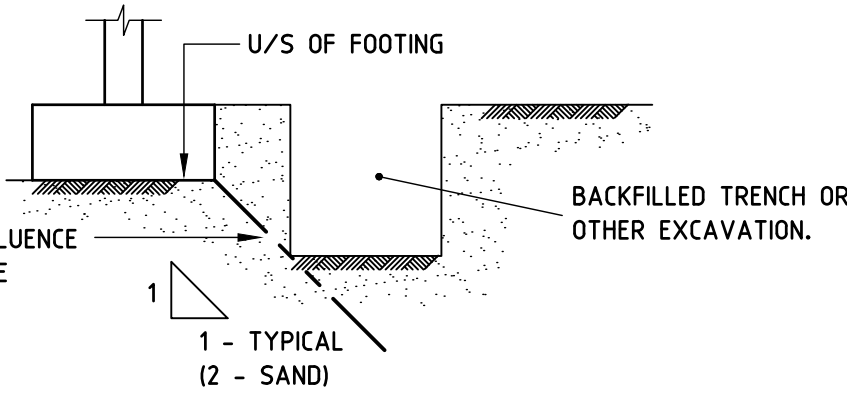
FOOTING DESIGN BASED ON THE MANUFACTURERS FOLLOWING ULTIMATE LIGHT POLE BASE REACTIONS:  
BASE MOMENT | ULS= 125.9 kNm  
BASE SHEAR | ULS= 14.2 kN

GENERAL NOTES

- G1 THESE DRAWINGS SHALL BE READ IN CONJUNCTION WITH ALL OTHER CONSULTANTS DRAWINGS, SPECIFICATIONS AND AS1100 TECHNICAL DRAWING.
- G2 ANY DISCREPANCIES SHALL BE REFERRED TO THE SUPERINTENDENT FOR DECISION BEFORE PROCEEDING WITH THE WORK.
- G3 DIMENSIONS SHALL NOT BE OBTAINED BY SCALING THE DRAWINGS.
- G7 MIN. CLEARANCE TO EXISTING GAS MAINS TO BE 300mm.
- G8 MIN. CLEARANCE TO EXISTING WATER MAINS TO BE 150mm.
- G9 ALL FOOTINGS TO BE HAND DUG FIRST TO CONFIRM LOCATION OF EXISTING SERVICES. CONSULT WOOLACOTTS FOR AMENDED FOOTING DESIGN IF TYPES SHOWN DO NOT APPLY.

FOUNDATION NOTES

- F1 UNLESS NOTED FOOTINGS SHALL BEAR UPON STIFF CLAY WITH A MINIMUM ALLOWABLE BEARING CAPACITY OF 150 kPa. REFER TO GEOTECHNICAL REPORT No. 24270.0 R.001 . REV0 PREPARED BY DOUGLAS PARTNERS DATED 11.07.22
- F2 FOUNDATION MATERIAL SHALL BE INSPECTED AND APPROVED BY A GEOTECHNICAL ENGINEER ENGAGED AND PAID FOR BY THE CONTRACTOR FOR THE NOMINATED ALLOWABLE BEARING CAPACITY PRIOR TO COMMENCING FOOTING CONSTRUCTION.
- F3 FOOTINGS SHALL BE LOCATED CENTRAL UNDER WALLS AND COLUMNS UNLESS NOTED OTHERWISE.
- F4 UNLESS OTHERWISE APPROVED, EXCAVATIONS NEAR NEW OR EXISTING FOOTINGS SHALL NOT BE WITHIN THE FOOTING INFLUENCE LINE.
- F5 FOOTINGS TO BE CONSTRUCTED AND BACKFILLED AS SOON AS POSSIBLE FOLLOWING EXCAVATION TO AVOID SOFTENING OR DRYING OUT BY EXPOSURE.
- F6 CONTRACTOR IS TO ALLOW FOR COST OF GEOTECHNICAL INSPECTIONS.



CONCRETE NOTES

- C1 ALL WORKMANSHIP AND MATERIALS SHALL BE IN ACCORDANCE WITH AS3600 CURRENT EDITION WITH AMENDMENTS, EXCEPT WHERE VARIED BY THE CONTRACT DOCUMENTS.
- C2 CONCRETE QUALITY - AS NOTED ON THE DRAWINGS. PROJECT ASSESSMENT OF STRENGTH GRADE SHALL BE USED.
- C3 CLEAR COVER OF REINFORCEMENT SHALL BE AS NOTED ON THE DRAWINGS. REINFORCEMENT SHALL BE RIGIDLY SUPPORTED TO MAINTAIN SPECIFIED COVER DURING CONSTRUCTION.
- C4 SIZES OF CONCRETE ELEMENTS DO NOT INCLUDE THICKNESS OF APPLIED FINISH.
- C5 CONSTRUCTION JOINTS WHERE NOT SHOWN SHALL BE LOCATED TO THE APPROVAL OF THE AUTHORISED PERSON.
- C6 BEAM DEPTHS ARE WRITTEN FIRST AND INCLUDE SLAB THICKNESS.
- C7 NO HOLES OR CHASES OTHER THAN THOSE SHOWN ON THE STRUCTURAL DRAWINGS SHALL BE MADE IN CONCRETE MEMBERS WITHOUT THE PRIOR APPROVAL OF THE AUTHORISED PERSON.
- C8 CONDUITS, PIPES ETC., SHALL ONLY BE LOCATED IN THE MIDDLE ONE THIRD OF SLAB DEPTH. (UNLESS NOTED OTHERWISE.)
- C9 REINFORCEMENT SYMBOLS:  
R - GRADE 250 PLAIN BAR IN ACCORDANCE WITH AS1302  
N - GRADE 500 DEFORMED BAR DUCTILITY CLASS N (D500N) IN ACCORDANCE WITH AS/NZS4671 WITH A CARBON EQUIVALENT (CE) LIMIT OF 0.39 MAX.  
SL - GRADE 500 SQUARE WELDED FABRIC, DEFORMED BARS DUCTILITY CLASS L (D500L) IN ACCORDANCE WITH AS/NZS4671.  
RL - GRADE 500 RECTANGULAR WELDED FABRIC, DEFORMED BARS DUCTILITY CLASS L (D500L) IN ACCORDANCE WITH AS/NZS4671.
- C10 REINFORCEMENT IS REPRESENTED DIAGRAMMATICALLY; IT IS NOT NECESSARILY SHOWN IN TRUE PROJECTION.
- C11 SPLICES IN REINFORCEMENT SHALL BE MADE ONLY IN THE POSITIONS SHOWN. OBTAIN APPROVAL FROM THE AUTHORISED PERSON FOR ANY OTHER SPLICES.
- C12 WELDING OF REINFORCEMENT SHALL NOT BE PERMITTED UNLESS SHOWN ON THE STRUCTURAL DRAWINGS.

CONCRETE QUALITY

ELEMENT	Strength Grade	Slump mm	Max. Agg. mm	Cement Type
ALL CONCRETE	N32	80	20	GP

No.	Date	Description	Ver.	Appr.
P1	15.08.22	PROGRESS ISSUE	E.A	S.D.C

PROGRESS  
PRINT

Client  
LIGHTING, ART & SCIENCE PTY LTD

**Woolacotts.**  
CONSULTING ENGINEERS

T +61 2 8203 1500 | www.woolacotts.com.au  
Suite 6.02 Level 6, 67 Albert Ave, Chatswood NSW 2067  
This drawing is copyright and must not be used, reproduced or copied wholly or in part without written permission of Woolacotts Consulting Engineers Pty Ltd

CROMER HIGH SCHOOL  
LIGHTING SPORTSFIELD

STRUCTURAL PLAN  
AND FOOTING DETAIL

Date	Approved	Verified	Prepared
AUGUST 2022	S.D.C	E.A	S.Y.C
Scale @ A1	1:100, 1:20	15.08.22	15.08.22
Job number	Drawing number	Amendment	
22-250	S01	P1	