

| DEMOLISHED AREA   |        | PROPOSED AREAS    |          |
|-------------------|--------|-------------------|----------|
| Building          | Area   | Building          | Area     |
| D BLOCK           | 320.47 | M BLOCK           | 495.54   |
| DEMOUNTABLES      | 98.72  | NEW BUILDING      | 2,027.82 |
| M BLOCK           | 465.78 | SOUTH & WEST WING | 1,533.62 |
| SOUTH & WEST WING |        | 4,146.98 m²       |          |
| 102.73            |        |                   |          |
| 987.65 m²         |        |                   |          |

REAL PROPERTY DESCRIPTION: LOT 1 in DP 1215531  
based on survey prepared by C.M.S. Surveyors Pty Ltd prepared  
04-04-2016 and 23-04-2018

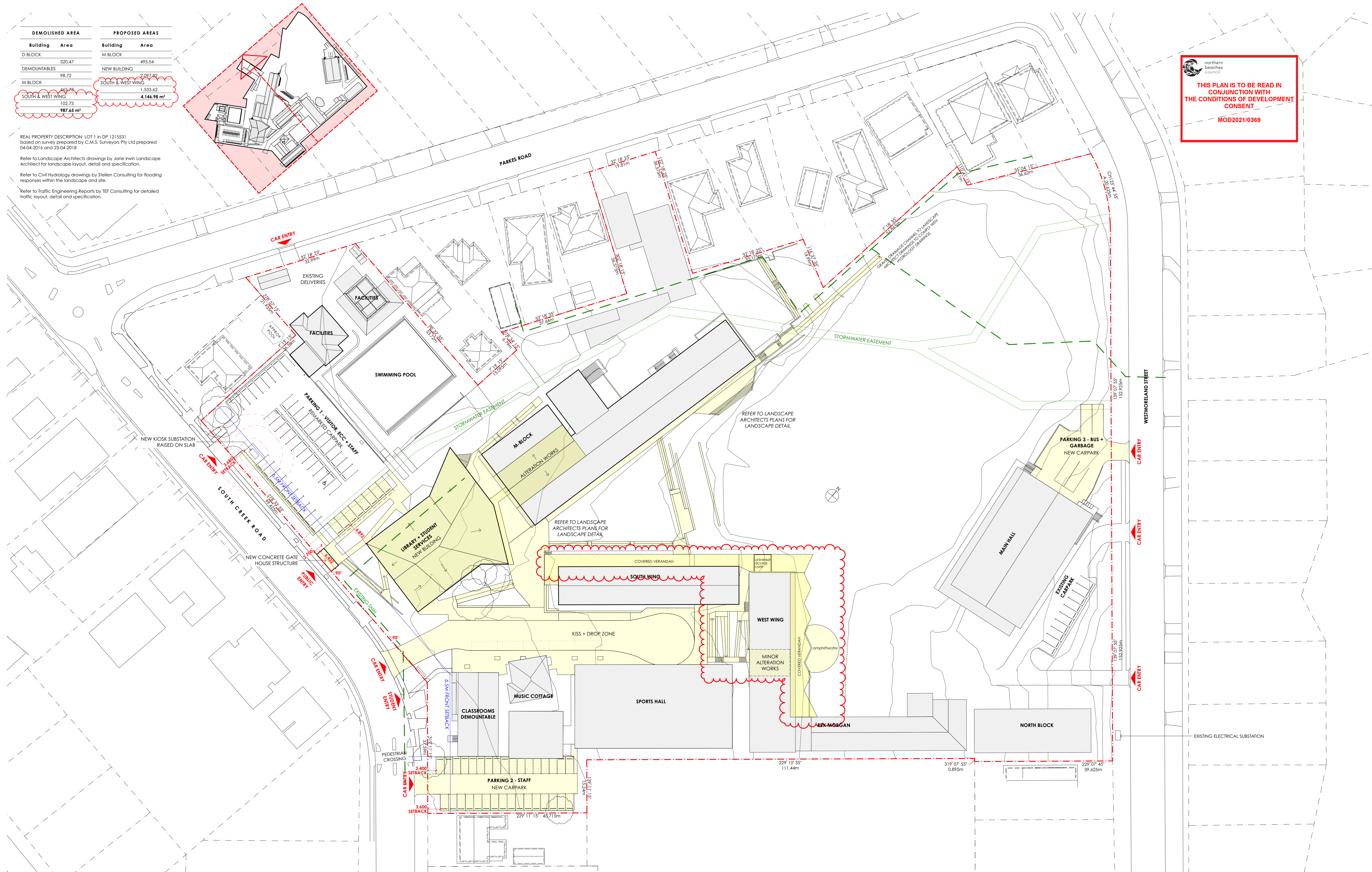
Refer to Landscape Architects drawings by Jane Irwin Landscape  
Architect for landscape layout, detail and specification.

Refer to Civil Hydrology drawings by Stellan Consulting for flooding  
responses within the landscape and site.

Refer to Traffic Engineering Reports by TEF Consulting for detailed  
traffic layout, detail and specification.

**THIS PLAN IS TO BE READ IN  
CONJUNCTION WITH  
THE CONDITIONS OF DEVELOPMENT  
CONSENT**

MOD2021/0369



1 Site Plan (Roof)  
1:500

LEGEND

|      |                       |
|------|-----------------------|
| AD   | ALUMINUM DOOR         |
| AW   | ALUMINUM WINDOW       |
| BS   | ROCK GUTTER           |
| BR   | BRICK                 |
| BSL  | STEEL BALUSTRADE      |
| BW   | BLOCKWORK             |
| EXFL | EXISTING FLOORING     |
| CONC | CONCRETE              |
| CPT  | CARPET                |
| CT   | CERAMIC TILE          |
| DN   | DOWNPIPE              |
| EXT  | EXISTING              |
| FC-1 | FIBRE CEMENT FLOORING |
| FG   | FIXED GLASS           |
| FR   | FRODO                 |
| FW   | FLOOR WASTE           |

|      |                                      |
|------|--------------------------------------|
| FBG  | GLAZED FACE BRICK                    |
| FBGS | GLAZED FACE BRICK SCREEN             |
| JU   | JOINERY UNIT                         |
| LO-1 | EXTERNAL LOUVRES - RETRACTABLE       |
| LO-2 | EXTERNAL LOUVRES - FIXED, HORIZONTAL |
| MAT  | ENTRY MAT                            |
| MC   | METAL CLADDING                       |
| MR   | METAL ROOFING                        |
| PER  | PERFORATED METAL                     |
| PF   | RENDER AND PAINT FINISH              |
| RF   | RUBBER FLOORING                      |
| RWO  | RAINWATER OUTLET                     |
| SK   | SKYLIGHT                             |
| TD   | TIMBER DOOR JOINERY                  |
| TW   | TIMBER WINDOW JOINERY                |

LEGEND

|                                    |
|------------------------------------|
| EXISTING ELEMENTS TO BE RETAINED   |
| EXISTING ELEMENTS TO BE DEMOLISHED |
| PROPOSED NEW WORKS                 |

| REVISION | DATE     | ISSUE              |
|----------|----------|--------------------|
| 01       | 31/10/19 | DA Issue           |
| 02       | 11/5/20  | DA Revision        |
| 03       | 25/5/21  | SECTION 4.55 ISSUE |

DRAWN BY LS CHECKED BY GP  
IF ISSUE IS INITIALED AS CHECKED DRAWING CAN BE CONSIDERED APPROVED UNDER NMA QUALITY MANAGEMENT SYSTEM

The Pittwater House Schools  
70 South Creek Rd, Collaroy NSW 2097

**NEESON MURCUTT + NEILLE**  
NEESON MURCUTT ARCHITECTS PTY LTD  
L1 9 ROSLYN ST POTTS POINT 2011 T: 8203 1870  
NOMINATED ARCHITECT : RACHEL NEESON No. 6692

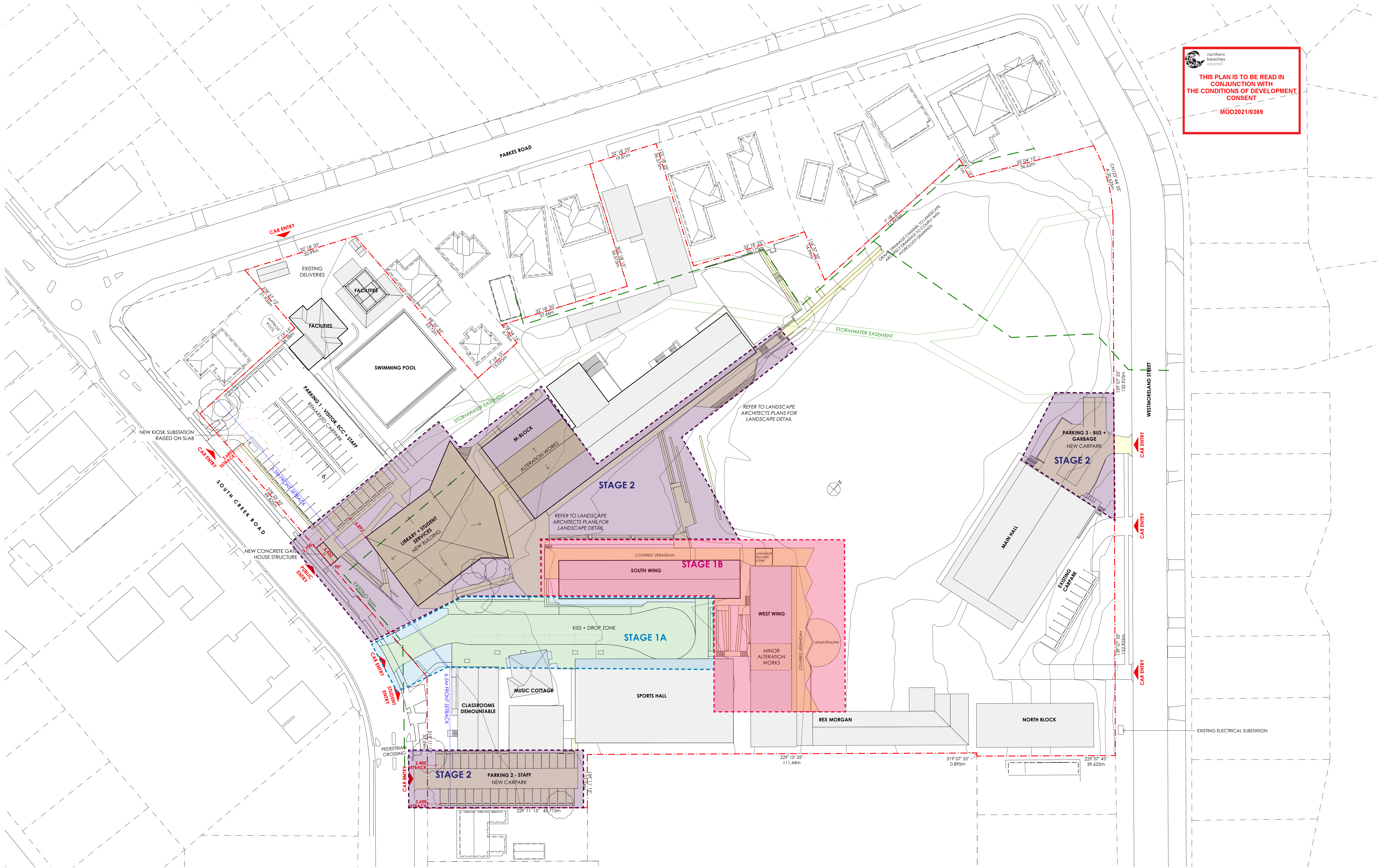
FOR The Pittwater House Schools

| NO    | REV | TITLE     | PHASE | SCALE     | DATE    |
|-------|-----|-----------|-------|-----------|---------|
| DA 04 | 03  | SITE PLAN | DA    | 1:500 @A1 | 25/5/21 |

Copyright in all documents and drawings prepared by NEESON MURCUTT ARCHITECTS and in any works executed from those documents and drawings shall remain the property of, or on creation vest in NEESON MURCUTT ARCHITECTS, Pty Ltd

©





northern  
beaches  
council

THIS PLAN IS TO BE READ IN  
CONJUNCTION WITH  
THE CONDITIONS OF DEVELOPMENT  
CONSENT

MOD2021/0369

1 Site Plan (Roof)  
1:500

LEGEND

AD ALUMINUM DOOR  
AW ALUMINUM WINDOW  
BS BOX CUTTER  
BK BRICK  
HLS STEEL BALUSTRADE  
BW BLOCKWORK  
EFL EXISTING FLOORING  
CONC CONCRETE  
CPT CARPET  
CT CERAMIC TILE  
DP DOWNPIPE  
EXT EXISTING  
FCY FIBRE GLASS FLOORING  
FG FIXED GLASS  
FW FLOOR WASTE

FIG GLAZED FACE BRICK  
FIGS GLAZED FACE BRICK SCREEN  
JU JOINERY UNIT  
LO-1 EXTERNAL LOUVRES - RETRACTABLE  
LO-2 EXTERNAL LOUVRES - FIXED, HORIZONTAL  
MAT ENTRY MAT  
MC METAL CLADDING  
MR METAL ROOFING  
PM PERFORATED METAL  
PF RENDER AND PAINT FINISH  
RUB RUBBER FLOORING  
SC STEEL COLUMN  
SK SKYLIGHT  
TD TIMBER DOOR JOINERY  
TW TIMBER WINDOW JOINERY

LEGEND

EXISTING ELEMENTS TO BE RETAINED  
EXISTING ELEMENTS TO BE DEMOLISHED

REVISION DATE ISSUE  
01 17/9/21 SECTION 4.55 RFI

DRAWN BY LS CHECKED BY GP  
IF ISSUE IS INITIALED AS CHECKED DRAWING CAN BE CONSIDERED APPROVED UNDER NMA QUALITY MANAGEMENT SYSTEM

The Pittwater House Schools  
70 South Creek Rd, Collaroy NSW 2097

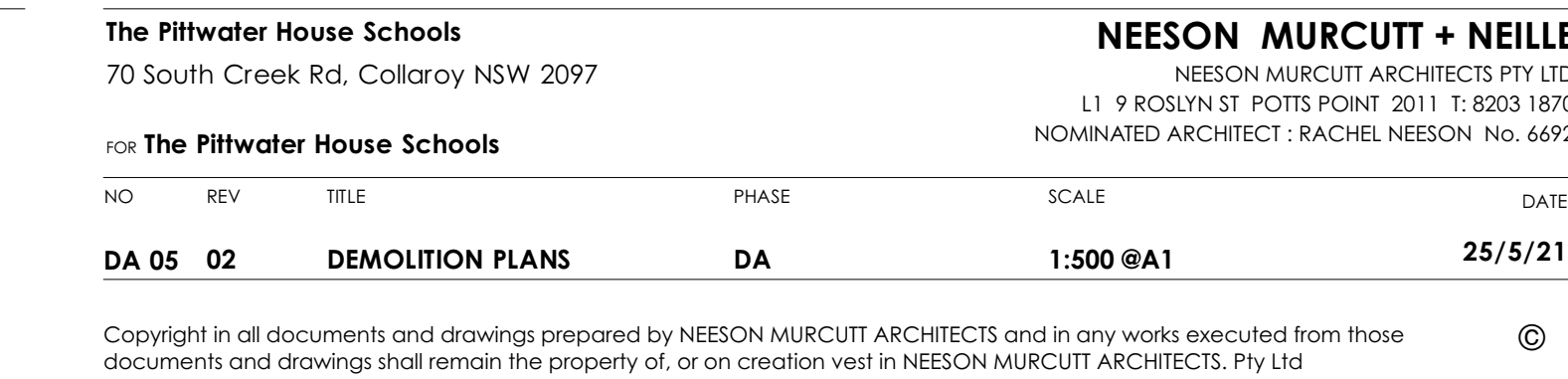
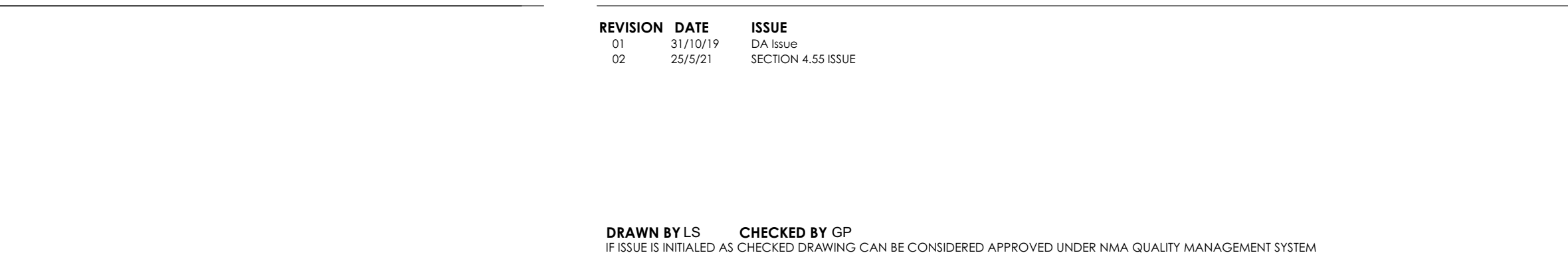
for The Pittwater House Schools

| NO         | REV | TITLE        | PHASE | SCALE     | DATE    |
|------------|-----|--------------|-------|-----------|---------|
| DA 04.2.01 |     | STAGING PLAN | DA    | 1:500 @A1 | 17/9/21 |

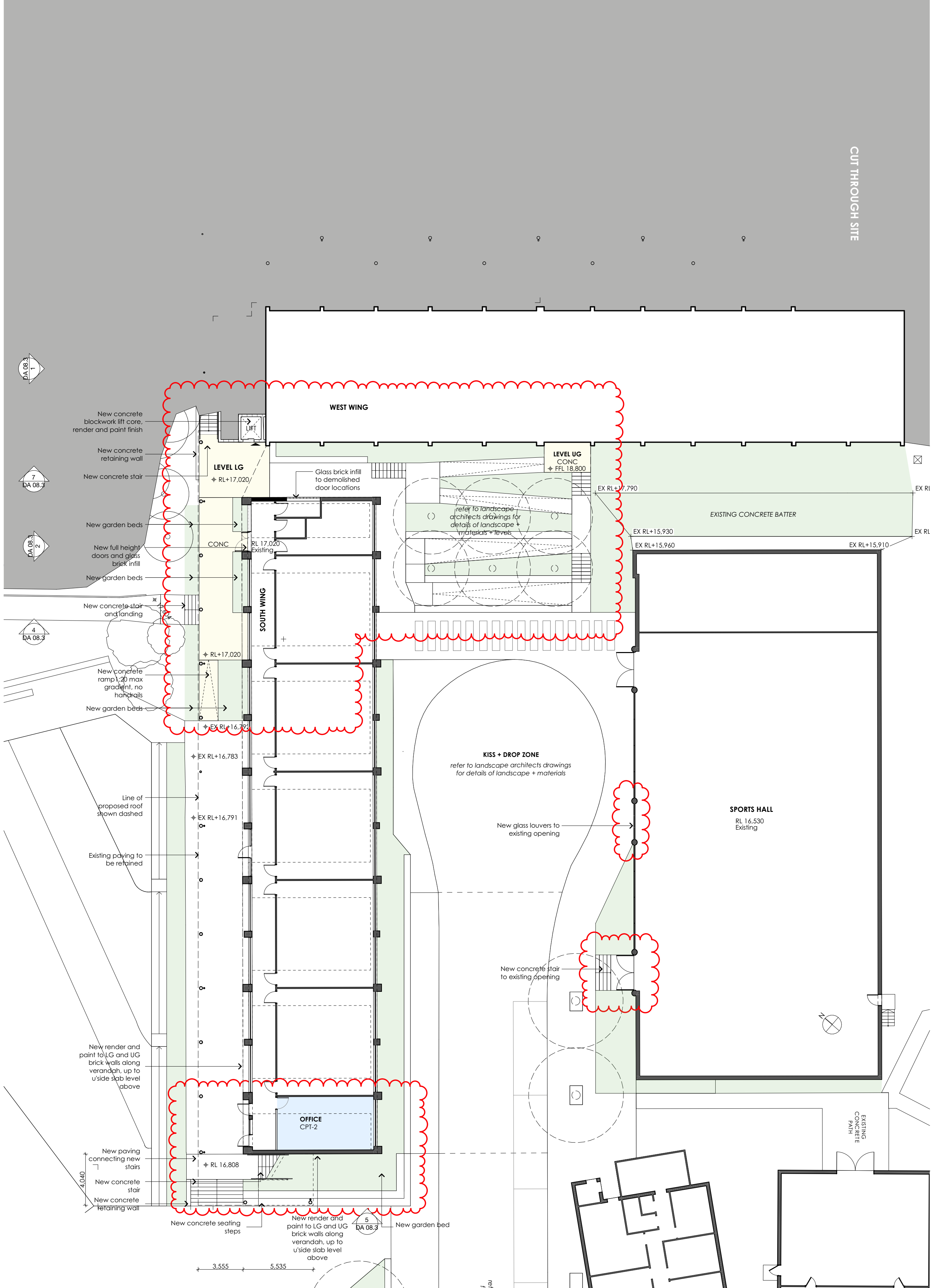
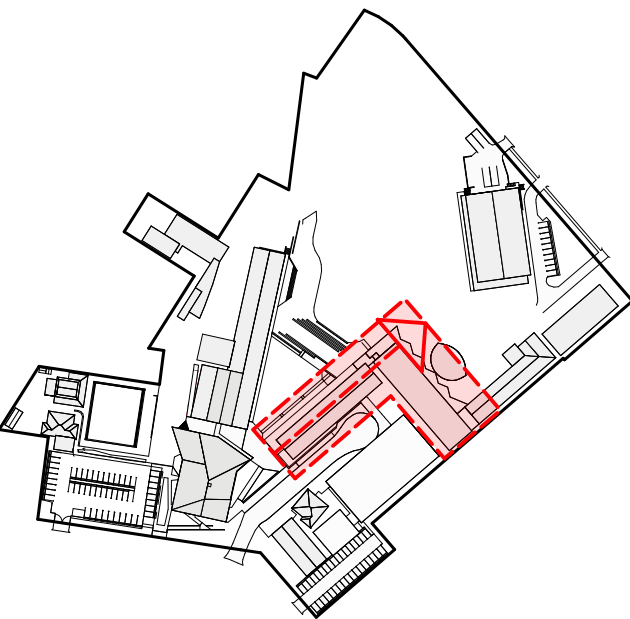
Copyright in all documents and drawings prepared by NEESON MURCUTT ARCHITECTS and in any works executed from those documents and drawings shall remain the property of, or on creation vest in NEESON MURCUTT ARCHITECTS, Pty Ltd

NEESON MURCUTT + NEILL  
NEESON MURCUTT ARCHITECTS PTY LTD  
L1 9 ROSLYN ST, POTTS POINT, 2011 T: 8203 1870  
NOMINATED ARCHITECT: RACHEL NEESON No. 6692

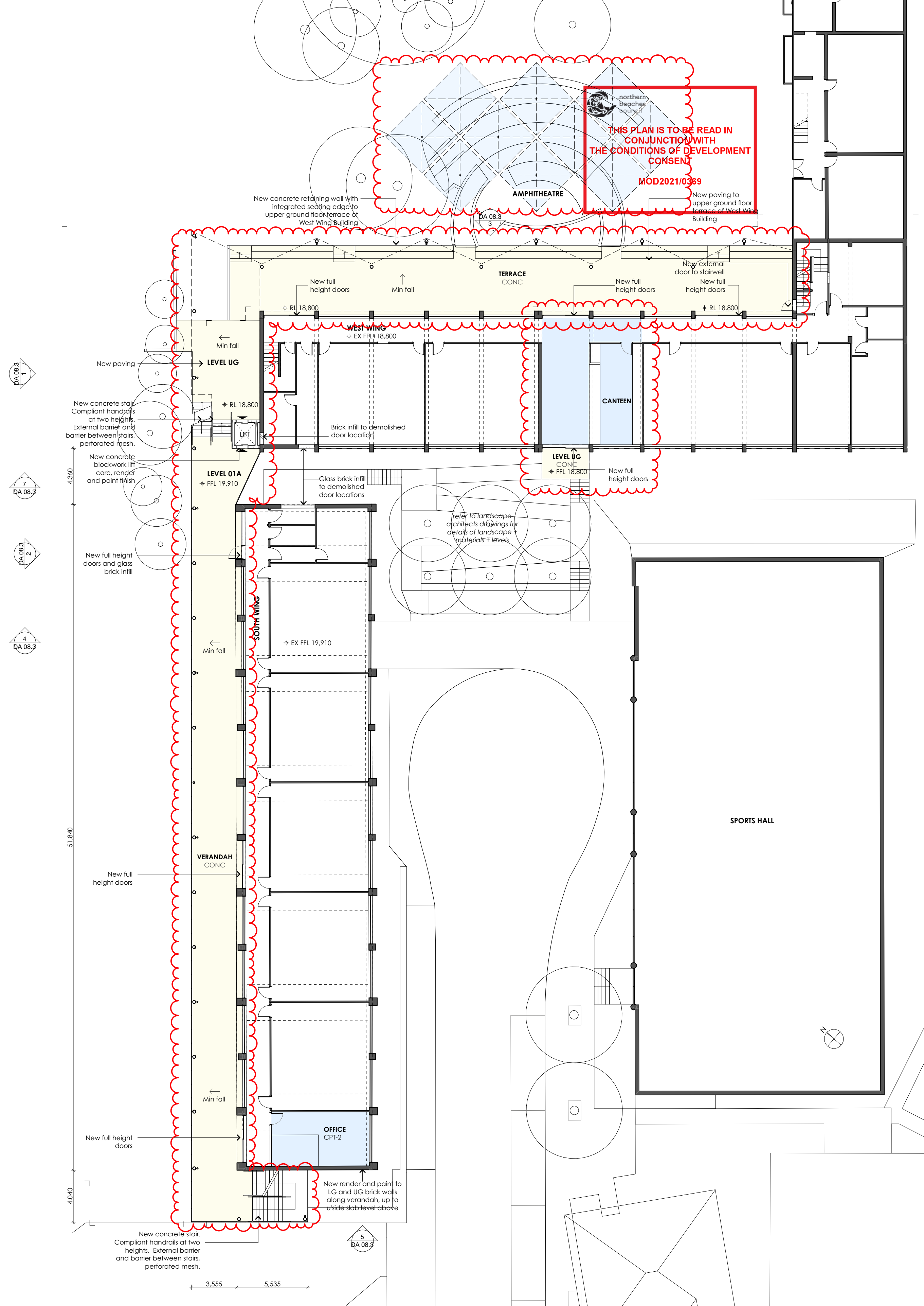








1 Lower Ground West & South Wing  
1:200



2 Upper Ground West & South Wing  
1:200

| LEGEND |                                      |
|--------|--------------------------------------|
| AD     | ALUMINUM DOOR                        |
| AW     | ALUMINUM WINDOW                      |
| BS     | BOX GUTTER                           |
| BR     | BRICK                                |
| BAUS   | STEEL BALUSTRADE                     |
| BW     | BLACKWORK                            |
| EX RL  | EXISTING FLOORING                    |
| CONC   | CONCRETE                             |
| CPT    | CARPET                               |
| CT     | CERAMIC TILE                         |
| DN     | DOWNPIPE                             |
| EXT    | EXISTING                             |
| FC-1   | FIBRE CEMENT FLOORING                |
| FG     | FIXED GLASS                          |
| FR     | FLOOR                                |
| FW     | FLOOR WASTE                          |
| FBG    | GLAZED FACE BRICK                    |
| FGS    | GLAZED FACE BRICK SCREEN             |
| JU     | JOINT UNIT                           |
| LO-1   | EXTERNAL LOUVRES - RETRACTABLE       |
| LO-2   | EXTERNAL LOUVRES - FIXED, HORIZONTAL |
| MAT    | ENTRY MAT                            |
| MC     | METAL CLADDING                       |
| MR     | METAL ROOFING                        |
| PA     | PERFORATED METAL                     |
| PF     | RENDER AND PAINT FINISH              |
| RF     | RUBBER FLOORING                      |
| RWO    | RAINWATER OUTLET                     |
| SC     | STEEL COLUMN                         |
| SK     | SKYLIGHT                             |
| TD     | TIMBER DOOR JOINERY                  |
| TW     | TIMBER WINDOW JOINERY                |

|                                    |
|------------------------------------|
| EXISTING ELEMENTS TO BE RETAINED   |
| EXISTING ELEMENTS TO BE DEMOLISHED |
| PROPOSED NEW WORKS                 |
| ADMINISTRATION/STAFF               |
| STUDENT LEARNING                   |
| STUDENT SERVICES                   |
| EXTERNAL + CIRCULATION             |

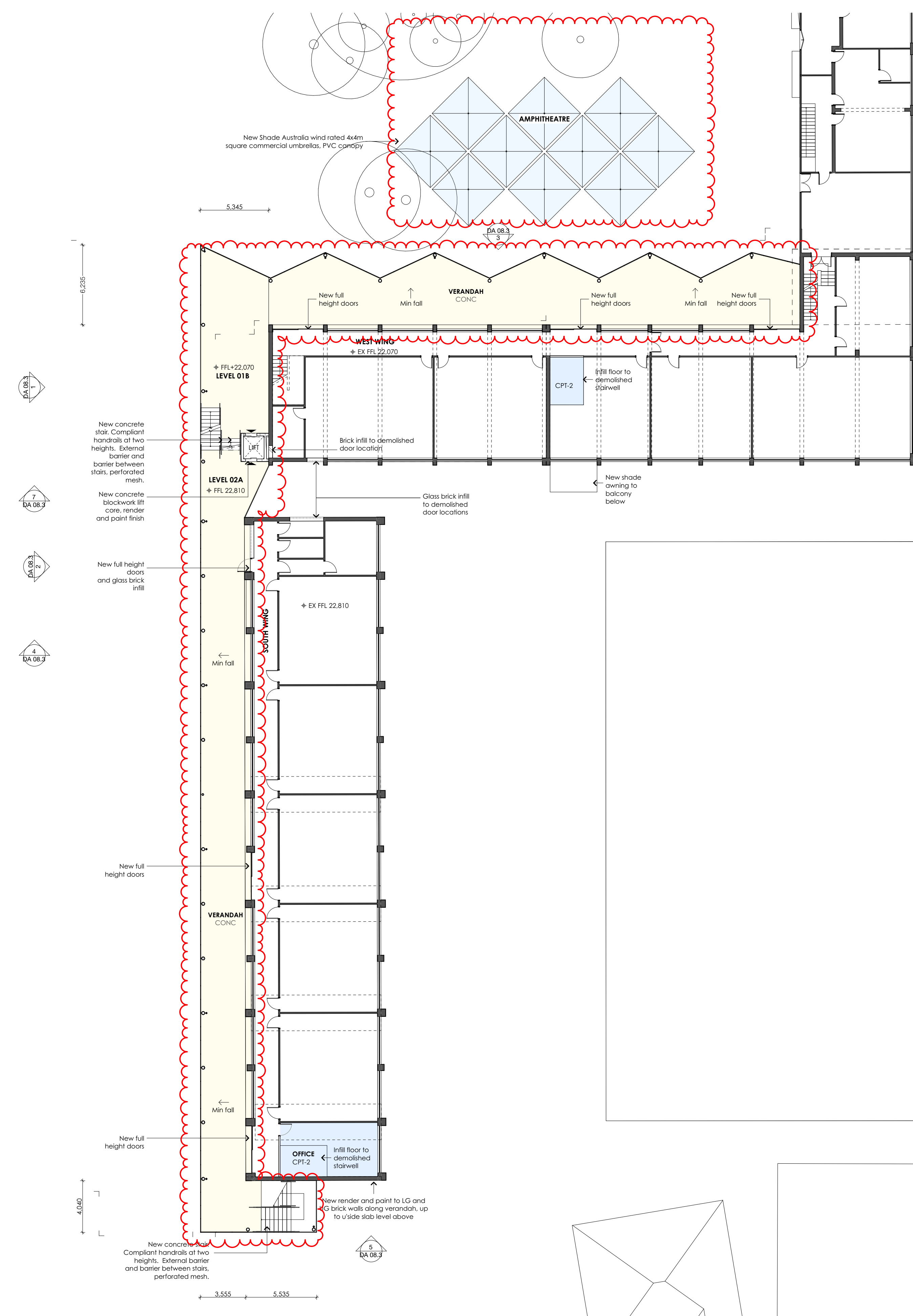
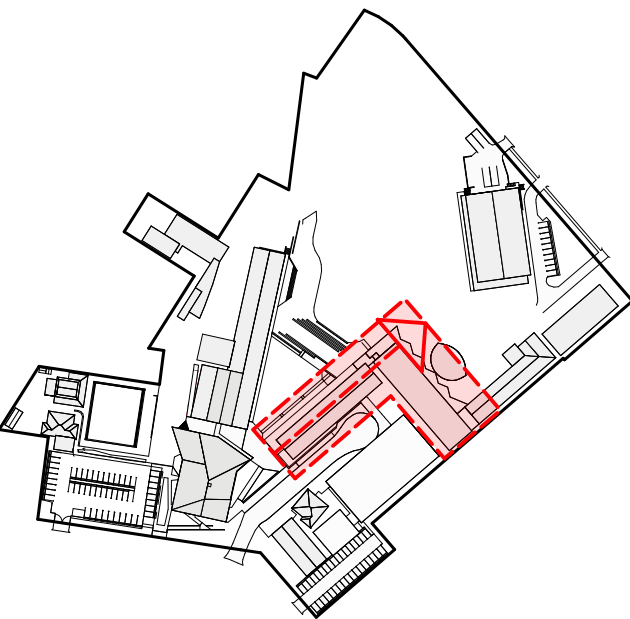
| REVISION | DATE     | ISSUE              |
|----------|----------|--------------------|
| 01       | 31/10/19 | DA Issue           |
| 02       | 5/2/20   | DA Revision        |
| 03       | 25/5/21  | SECTION 4.55 ISSUE |

DRAWN BY LS CHECKED BY GP  
IF ISSUE IS INITIALED AS CHECKED DRAWING CAN BE CONSIDERED APPROVED UNDER NMA QUALITY MANAGEMENT SYSTEM

| The Pittwater House Schools          |     | NEESON MURCUTT + NEILLE   |       |           |         |
|--------------------------------------|-----|---|-------|-----------|---------|
| 70 South Creek Rd, Collaroy NSW 2097 |     | NEESON MURCUTT ARCHITECTS PTY LTD<br>L1 9 ROSLYN ST POTTS POINT 2011 T: 8203 1870<br>NOMINATED ARCHITECT : RACHEL NEESON No. 6692 |       |           |         |
| FOR The Pittwater House Schools      |     |   |       |           |         |
| NO                                   | REV | TITLE   | PHASE | SCALE     | DATE    |
| DA 08                                | 03  | SOUTH + WEST WING<br>UNIVERSAL CORE PLANS   | DA    | 1:200 @A1 | 25/5/21 |

Copyright in all documents and drawings prepared by NEESON MURCUTT ARCHITECTS and in any works executed from those documents and drawings shall remain the property of, or on creation vest in NEESON MURCUTT ARCHITECTS, Pty Ltd





1 Level 1 West & South Wing  
1:200

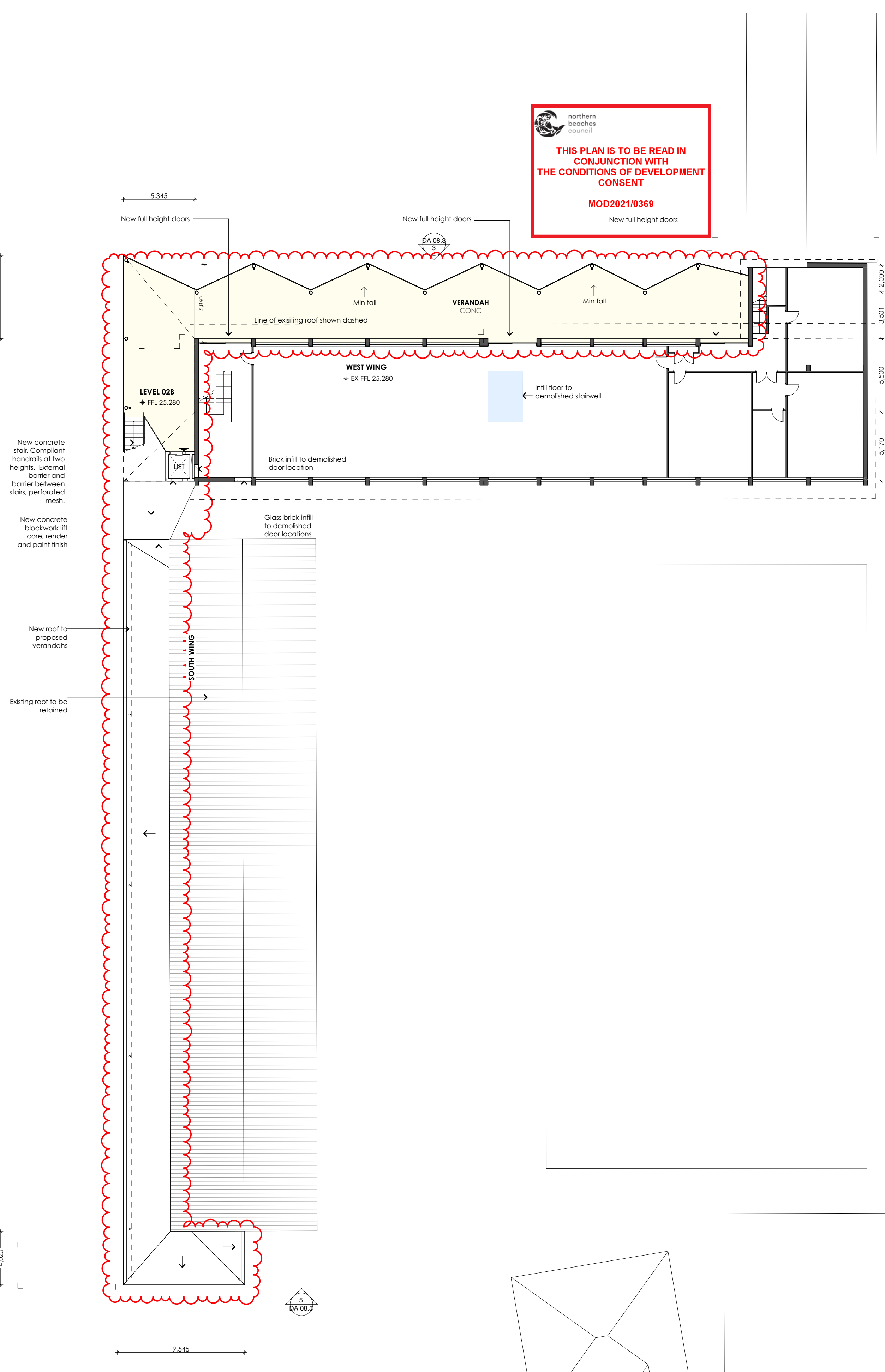
| LEGEND |                                      |
|--------|--------------------------------------|
| AD     | ALUMINUM DOOR                        |
| AW     | ALUMINUM WINDOW                      |
| BS     | BOX GUTTER                           |
| BS     | BRICK                                |
| BS     | STEEL BALUSTRADE                     |
| BS     | BLOCKWORK                            |
| BS     | EXISTING FLOORING                    |
| BS     | CONCRETE                             |
| BS     | CARPET                               |
| BS     | CERAMIC TILE                         |
| BS     | DOWNPIPE                             |
| BS     | EXISTING                             |
| BS     | FIBRE CEMENT FLOORING                |
| BS     | FIXED GLASS                          |
| BS     | FLOOR                                |
| BS     | FLOOR WASTE                          |
| BS     | GLAZED FACE BRICK                    |
| BS     | JOINTERY UNIT                        |
| BS     | EXTERNAL LOUVRES - RETRACTABLE       |
| BS     | EXTERNAL LOUVRES - FIXED, HORIZONTAL |
| BS     | ENTRY MAT                            |
| BS     | METAL CLADDING                       |
| BS     | METAL ROOFING                        |
| BS     | PERFORATED METAL                     |
| BS     | RENDER AND PAINT FINISH              |
| BS     | RUBBER FLOORING                      |
| BS     | RAINWATER OUTLET                     |
| BS     | STEEL COLUMN                         |
| BS     | SKYLIGHT                             |
| BS     | TIMBER DOOR JOINERY                  |
| BS     | TIMBER WINDOW JOINERY                |

|    |                                    |
|----|------------------------------------|
| BS | EXISTING ELEMENTS TO BE RETAINED   |
| BS | EXISTING ELEMENTS TO BE DEMOLISHED |
| BS | PROPOSED NEW WORKS                 |
| BS | ADMINISTRATION/STAFF               |
| BS | STUDENT LEARNING                   |
| BS | STUDENT SERVICES                   |
| BS | EXTERNAL + CIRCULATION             |

2 Level 2 West & South Wing  
1:200

| REVISION | DATE    | ISSUE              |
|----------|---------|--------------------|
| 01       | 23/5/21 | SECTION 4.55 ISSUE |

DRAWN BY LS CHECKED BY GP  
IF ISSUE IS INITIALED AS CHECKED DRAWING CAN BE CONSIDERED APPROVED UNDER NMA QUALITY MANAGEMENT SYSTEM



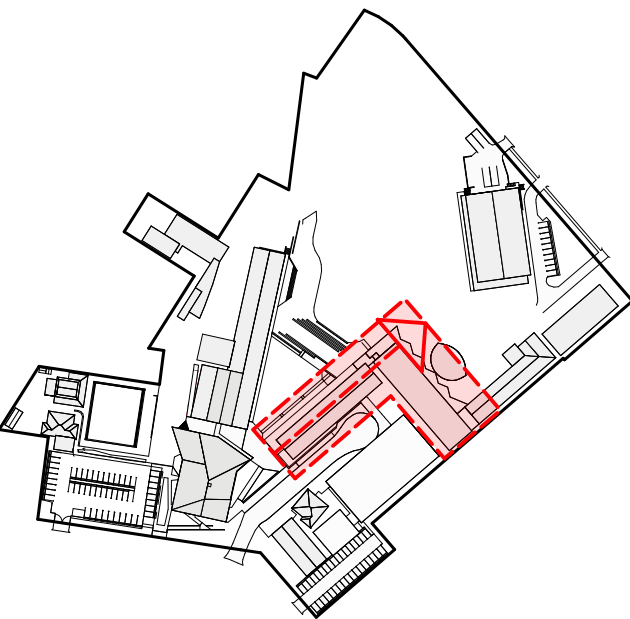
2 Level 2 West & South Wing  
1:200

| The Pittwater House Schools          |     |   |       | NEESON MURCUTT + NEILLE  |         |
|--------------------------------------|-----|---|-------|--|---------|
| 70 South Creek Rd, Collaroy NSW 2097 |     |   |       | NEESON MURCUTT ARCHITECTS PTY LTD<br>L1 9 ROSLYN ST POTTS POINT 2011 T: 8203 1870<br>NOMINATED ARCHITECT: RACHEL NEESON No. 6692 |         |
| FOR The Pittwater House Schools      |     |   |       |  |         |
| NO                                   | REV | TITLE                                     | PHASE | SCALE  | DATE    |
| DA 08.1 01                           |     | SOUTH + WEST WING<br>UNIVERSAL CORE PLANS | DA    | 1:200 @A1  | 25/5/21 |

Copyright in all documents and drawings prepared by NEESON MURCUTT ARCHITECTS and in any works executed from those documents and drawings shall remain the property of, or on creation vest in NEESON MURCUTT ARCHITECTS, Pty Ltd

©





northern  
beaches  
council

THIS PLAN IS TO BE READ IN  
CONJUNCTION WITH  
THE CONDITIONS OF DEVELOPMENT  
CONSENT

MOD2021/0369



New roof to  
proposed  
verandahs.



1 Roof West & South Wing  
1:200

LEGEND

**AD** ALUMINIUM DOOR  
**AW** ALUMINIUM WINDOW  
**BS** ROCK GUTTER  
**BS** BRICK  
**BS** STEEL BALUSTRADE  
**BS** BLOCKWORK  
**BS** EXISTING FLOORING  
**BS** CONCRETE  
**BS** CERAMIC TILE  
**BS** DOWNPIPE  
**BS** EXISTING  
**BS** FIBRE CEMENT FLOORING  
**BS** FIXED GLASS  
**BS** FLOOR  
**BS** FLOOR WASTE

**BSG** GLAZED FACE BRICK  
**BSG** GLAZED FACE BRICK SCREEN  
**BSG** JOINTERY UNIT  
**BSG** EXTERNAL LOUVRES - RETRACTABLE  
**BSG** EXTERNAL LOUVRES - FIXED, HORIZONTAL  
**BSG** ENTRY MAT  
**BSG** METAL CLADDING  
**BSG** METAL ROOFING  
**BSG** PERFORATED METAL  
**BSG** RENDER AND PAINT FINISH  
**BSG** RUBBER FLOORING  
**BSG** RAINWATER OUTLET  
**BSG** SKYLIGHT  
**BSG** TIMBER DOOR JOINERY  
**BSG** TIMBER WINDOW JOINERY

LEGEND

EXISTING ELEMENTS TO BE RETAINED  
EXISTING ELEMENTS TO BE DEMOLISHED

REVISION DATE ISSUE  
01 25/5/21 SECTION 4.55 ISSUE

DRAWN BY LS CHECKED BY GP  
IF ISSUE IS INITIALED AS CHECKED DRAWING CAN BE CONSIDERED APPROVED UNDER NMA QUALITY MANAGEMENT SYSTEM

The Pittwater House Schools  
70 South Creek Rd, Collaroy NSW 2097

NEESON MURCUTT + NEILLE  
NEESON MURCUTT ARCHITECTS PTY LTD  
L1 9 ROSLYN ST POTTS POINT 2011 T: 8203 1870  
NOMINATED ARCHITECT: RACHEL NEESON No. 6692

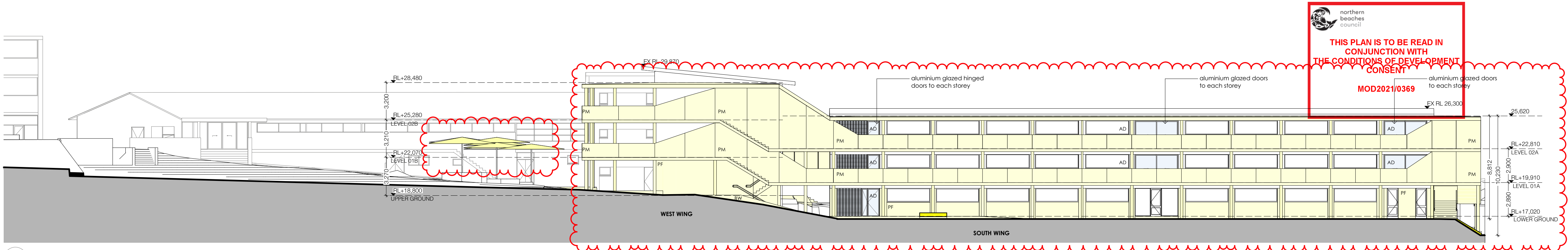
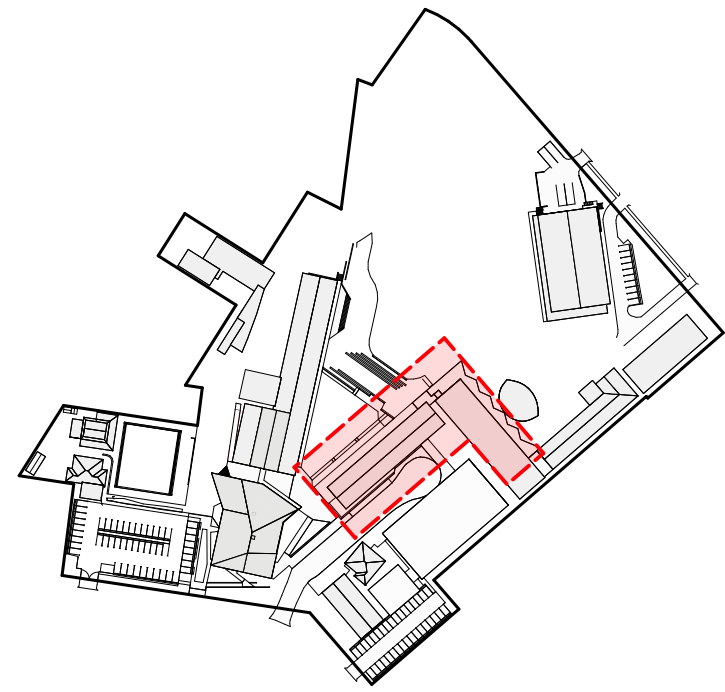
FOR The Pittwater House Schools

| NO         | REV | TITLE                                     | PHASE | SCALE     | DATE    |
|------------|-----|---|-------|-----------|---------|
| DA 08.2 01 |     | SOUTH + WEST WING<br>UNIVERSAL CORE PLANS | DA    | 1:200 @A1 | 25/5/21 |

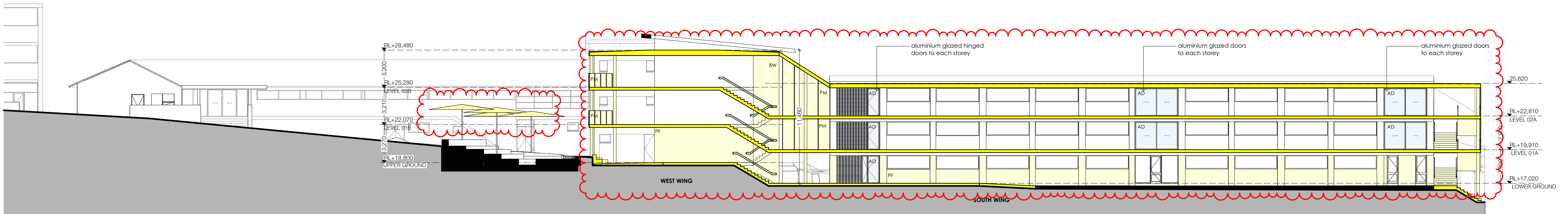
Copyright in all documents and drawings prepared by NEESON MURCUTT ARCHITECTS and in any works executed from those documents and drawings shall remain the property of, or on creation vest in NEESON MURCUTT ARCHITECTS, Pty Ltd



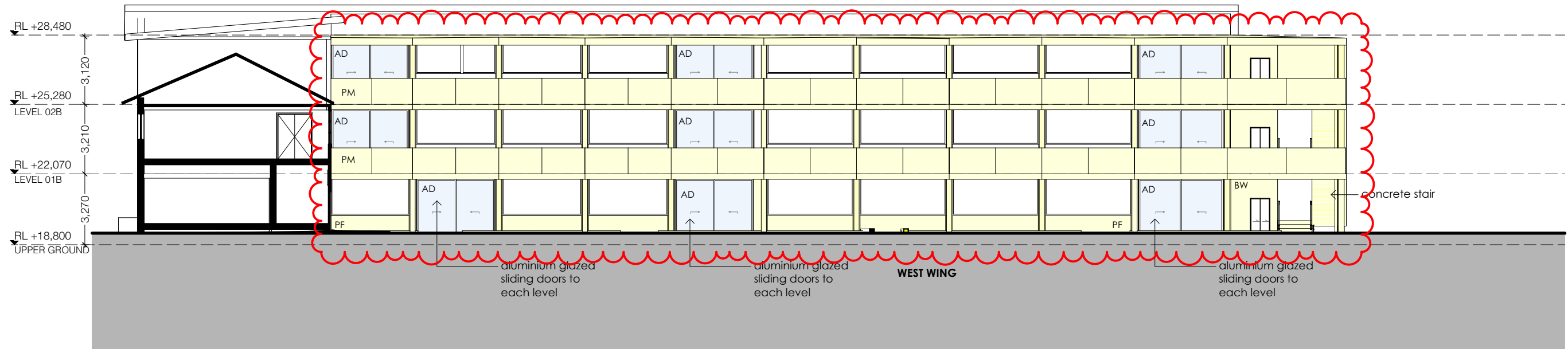




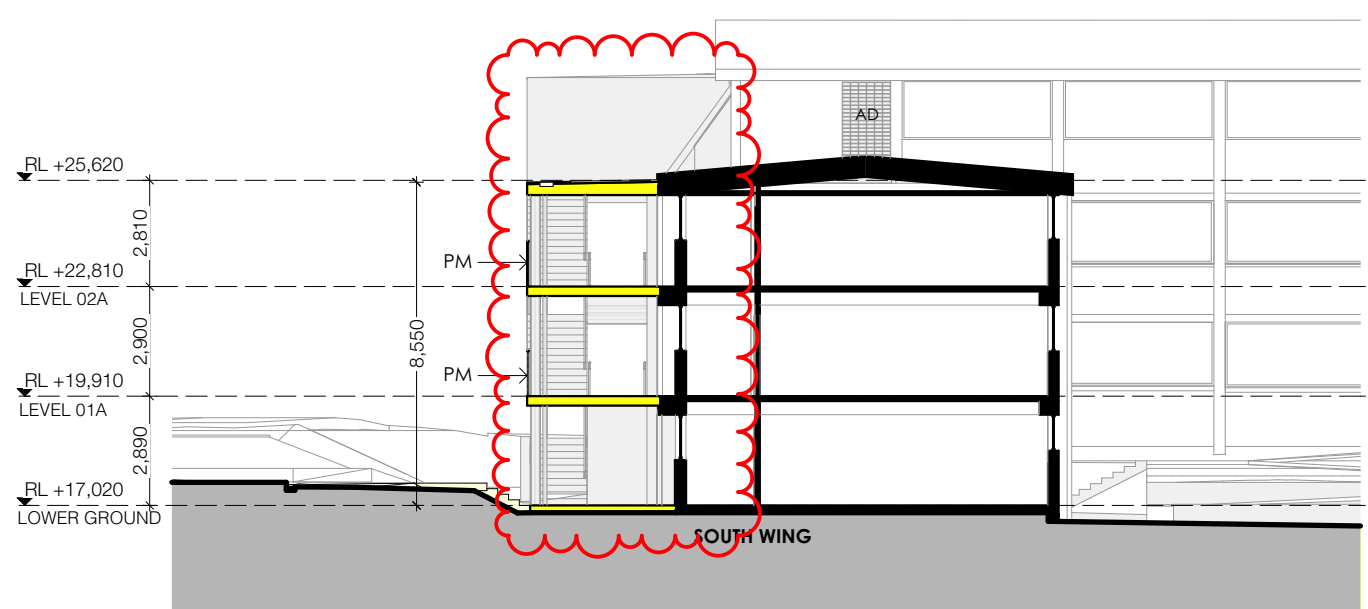
1 NORTH ELEVATION  
1:200



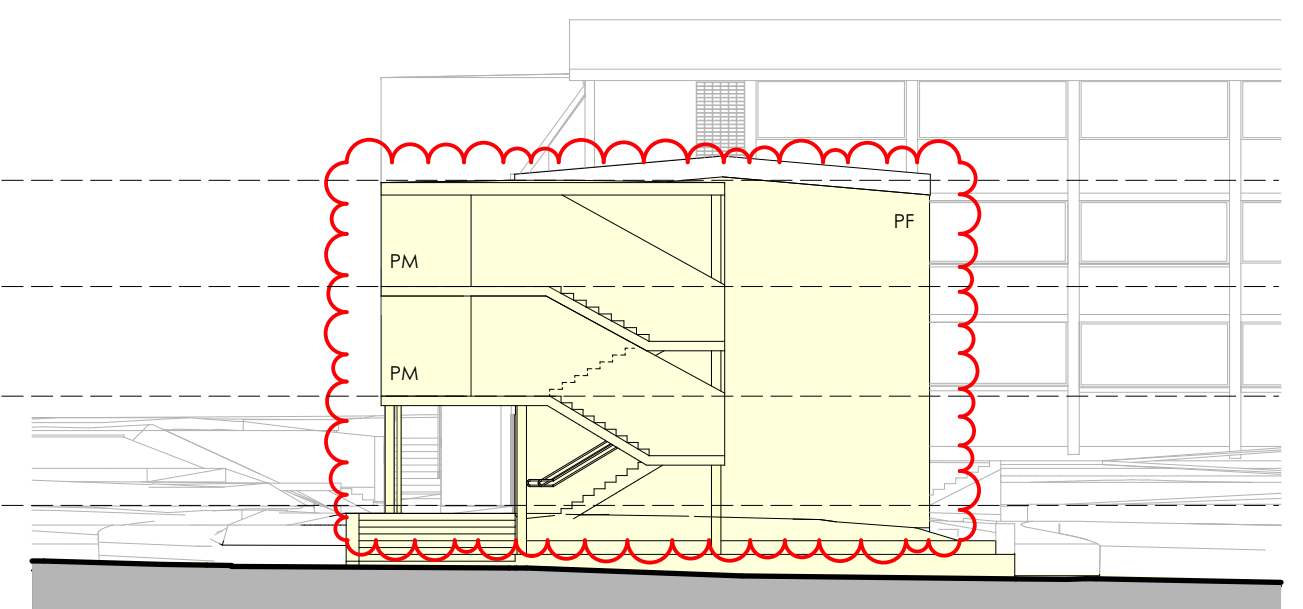
2 SOUTH WING NEW BALCONY SECTION  
1:200



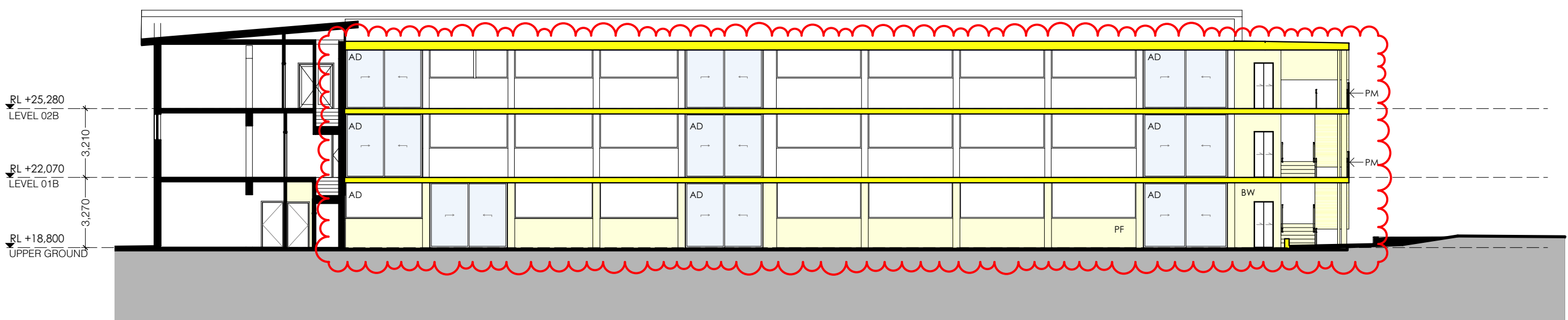
3 EAST ELEVATION  
1:200



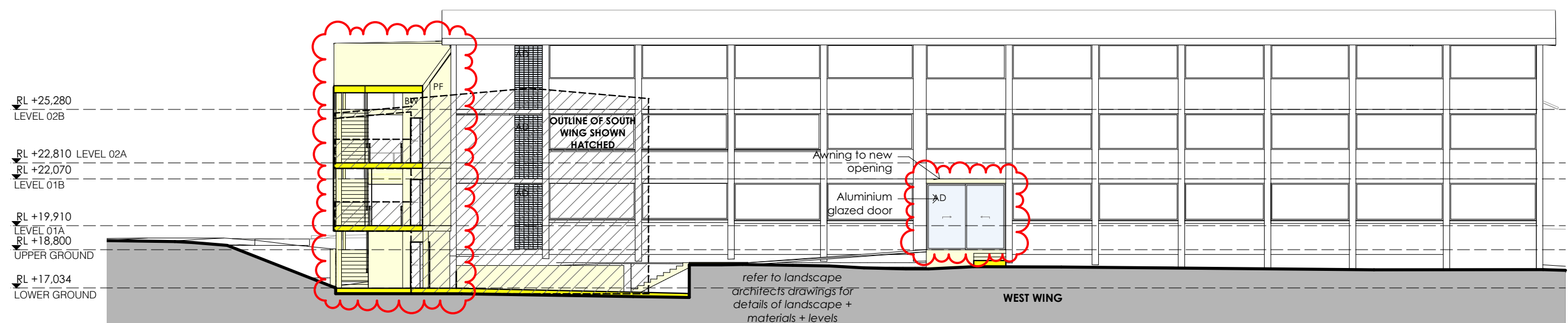
4 SOUTH WING CROSS SECTION  
1:200



5 SOUTH WING SOUTH ELEVATION  
1:200



6 WEST WING NEW BALCONY SECTION  
1:200



7 WEST WING SOUTH ELEVATION  
1:200

LEGEND

AD ALUMINUM DOOR  
AW ALUMINUM WINDOW  
BS BRICK GUTTER  
BAUS STEEL BALUSTRADE  
BW EXISTING FLOORING  
CONC CONCRETE  
CPT CARPET  
CT CERAMIC TILE  
DN DOWNPIPE  
EXT EXISTING  
FC-1 FIBRE CEMENT FLOORING  
FG FIXED GLASS  
FF FLOOR  
FW FLOOR WASTE

FBG GLAZED FACE BRICK  
FBGS GLAZED FACE BRICK SCREEN  
JU JOINERY UNIT  
LO-1 EXTERNAL LOUVRES - RETRACTABLE  
LO-2 EXTERNAL LOUVRES - FIXED, HORIZONTAL  
MAT ENTRY MAT  
MC METAL CLADDING  
MR METAL ROOFING  
PA PERFORATED METAL  
PF RENDER AND PAINT FINISH  
RUB RUBBER FLOORING  
RWO RAINWATER OUTLET  
SC STEEL COLUMN  
SK SKYLIGHT  
TD TIMBER DOOR JOINERY  
TW TIMBER WINDOW JOINERY

LEGEND

EXISTING ELEMENTS TO BE RETAINED  
EXISTING ELEMENTS TO BE DEMOLISHED  
PROPOSED NEW WORKS  
ADMINISTRATION/STAFF  
STUDENT LEARNING  
STUDENT SERVICES  
EXTERNAL + CIRCULATION

| REVISION | DATE    | ISSUE              |
|----------|---------|--------------------|
| 01       | 22/5/21 | SECTION 4.55 ISSUE |

DRAWN BY LS CHECKED BY GP  
IF ISSUE IS INITIALED AS CHECKED DRAWING CAN BE CONSIDERED APPROVED UNDER NMA QUALITY MANAGEMENT SYSTEM

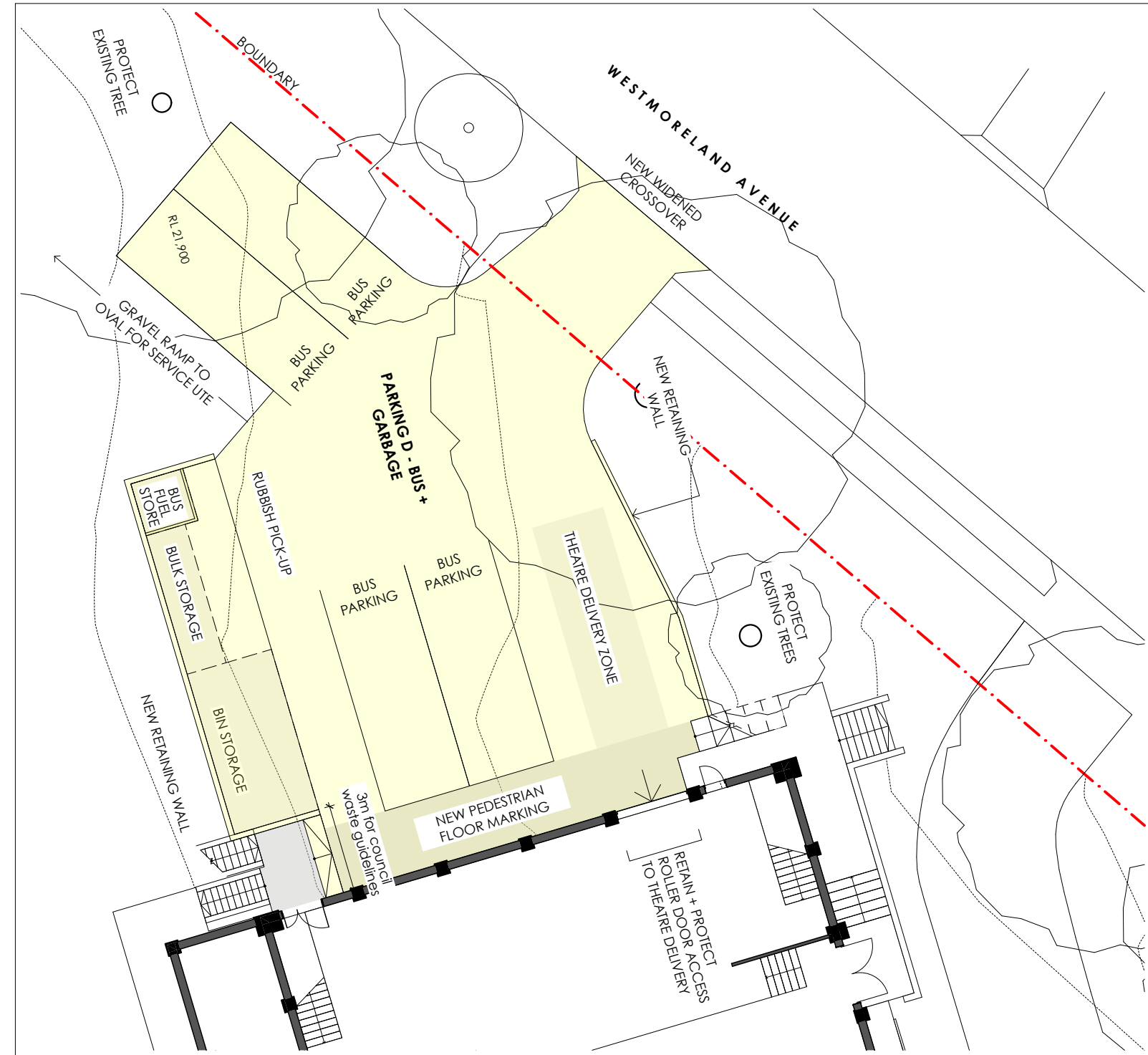
The Pittwater House Schools  
70 South Creek Rd, Collaroy NSW 2097

NEESON MURCUTT + NEILLE  
NEESON MURCUTT ARCHITECTS PTY LTD  
L1 9 ROSLYN ST POTTS POINT 2011 T: 8203 1870  
NOMINATED ARCHITECT: RACHEL NEESON No. 6692

| NO         | REV | TITLE                                     | PHASE | SCALE     | DATE    |
|------------|-----|---|-------|-----------|---------|
| DA 08.3 01 |     | SOUTH + WEST WING SECTION<br>+ ELEVATIONS | DA    | 1:200 @A1 | 25/5/21 |

Copyright in all documents and drawings prepared by NEESON MURCUTT ARCHITECTS and in any works executed from those documents and drawings shall remain the property of, or on creation vest in NEESON MURCUTT ARCHITECTS, Pty Ltd





1 PARKING D - BUS + GARBAGE  
1:200

| CARPARKING SUMMARY EXISTING |           |                  |     |
|-----------------------------|-----------|------------------|-----|
| Vehicle                     | Area      | Stage            | No. |
| BUS PARKING                 | PARKING B | To Be Demolished | 4   |
|                             |           |                  | 4   |
| ECC                         | PARKING A | To Be Demolished | 14  |
|                             |           |                  | 14  |
| STAFF                       | PARKING A | To Be Demolished | 35  |
|                             |           |                  | 10  |
|                             | PARKING E | Existing         | 8   |
|                             |           |                  | 53  |
|                             |           |                  | 71  |

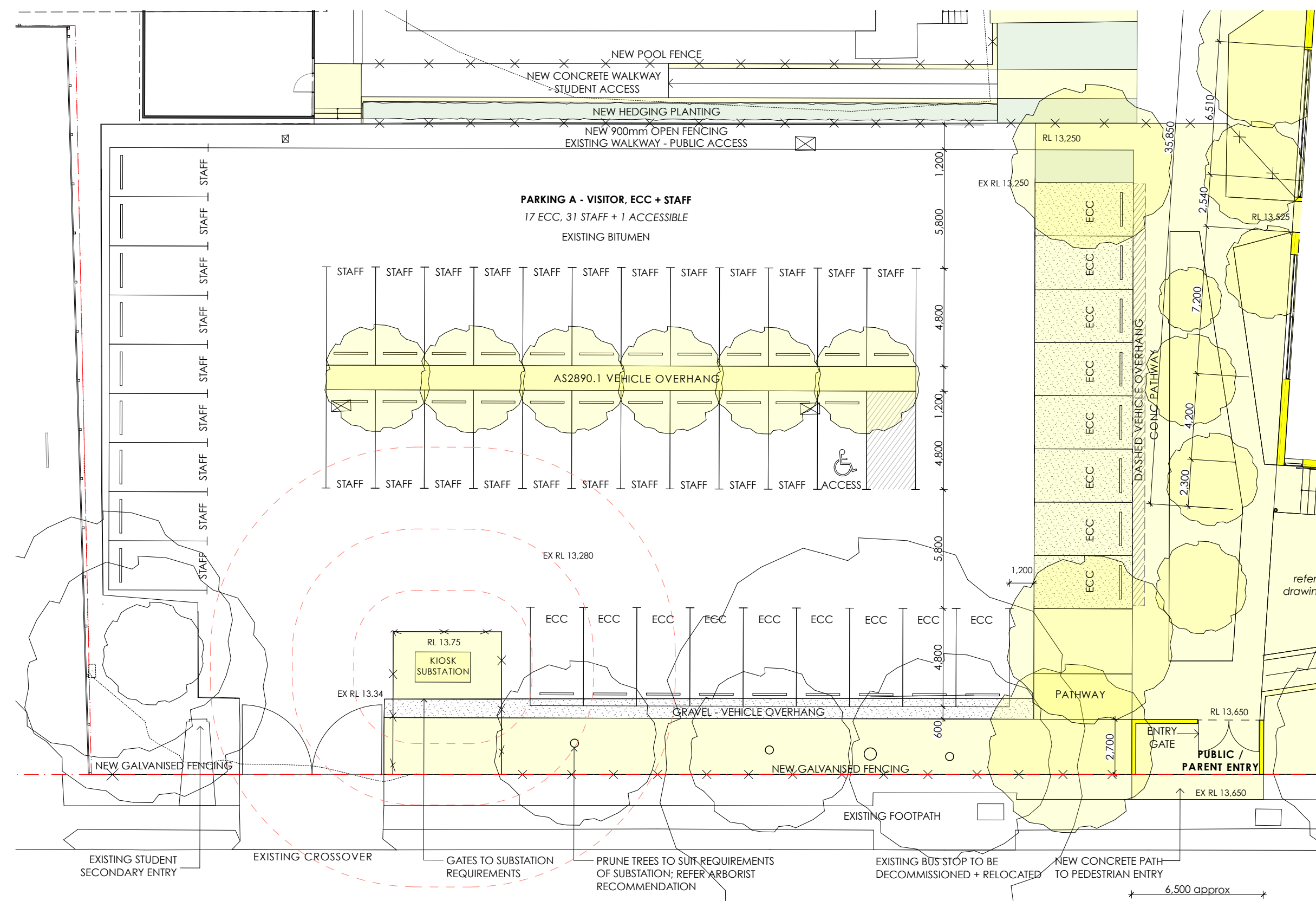
NOTE  
PLEASE REFER TO TRAFFIC ENGINEER REPORT FOR DETAILS  
OF TRAFFIC + PARKING PROPOSAL

| CARPARKING SUMMARY PROPOSED |             |          |     |
|-----------------------------|-------------|----------|-----|
| Vehicle                     | Area        | Stage    | No. |
| ACCESS                      | PARKING A   | New      | 1   |
|                             |             |          | 1   |
| BUS PARKING                 | PARKING D   | New      | 4   |
|                             |             |          | 4   |
| ECC                         | PARKING A   | New      | 17  |
|                             |             |          | 17  |
| KISS + DROP                 | KISS + DROP | New      | 5   |
|                             |             |          | 5   |
| STAFF                       | PARKING A   | New      | 31  |
|                             |             |          | 21  |
|                             | PARKING C   | Existing | 10  |
|                             |             |          | 8   |
|                             |             |          | 70  |
| STAFF SMALL                 | PARKING B   | New      | 12  |
|                             |             |          | 12  |
|                             |             |          | 109 |

|             |          |     |
|-------------|----------|-----|
| PARKING A   | New      | 31  |
| PARKING B   | New      | 21  |
| PARKING C   | Existing | 10  |
| PARKING E   | Existing | 8   |
|             |          | 70  |
| STAFF SMALL |          |     |
| PARKING B   | New      | 12  |
|             |          | 12  |
|             |          | 109 |

02

02



2 PARKING A, B + KISS & DROP ZONE  
1:200

| LEGEND |                                      |
|--------|--------------------------------------|
| AD     | ALUMINUM DOOR                        |
| AW     | ALUMINUM WINDOW                      |
| BS     | ROCK GUTTER                          |
| BR     | BRICK                                |
| BSL    | STEEL BALUSTRADE                     |
| BWL    | BLOCKWORK                            |
| EXL    | EXISTING FLOORING                    |
| CONC   | CONCRETE                             |
| CPT    | CARPET                               |
| CT     | CERAMIC TILE                         |
| DPT    | DOWNPIPE                             |
| EXT    | EXISTING                             |
| FC     | FIBRE CEMENT FLOORING                |
| FG     | FIBRE GLASS                          |
| FW     | FLOOR WASTE                          |
| FBG    | GLAZED FACE BRICK                    |
| FGS    | GLAZED FACE BRICK SCREEN             |
| JU     | JOINT UNIT                           |
| LO-1   | EXTERNAL LOUVRES - FIXED, HORIZONTAL |
| LO-2   | EXTERNAL LOUVRES - FIXED, VERTICAL   |
| ENT    | ENTRY MAT                            |
| MC     | METAL CLADDING                       |
| MR     | METAL ROOFING                        |
| MA     | METAL ROOFING                        |
| RP     | RUBBER FLOORING                      |
| RWC    | RAINWATER OUTLET                     |
| SC     | STEEL COLUMN                         |
| SL     | SATLIGHT                             |
| TD     | TIMBER DOOR JOINERY                  |
| TW     | TIMBER WINDOW JOINERY                |

|                                    |
|------------------------------------|
| EXISTING ELEMENTS TO BE RETAINED   |
| EXISTING ELEMENTS TO BE DEMOLISHED |
| PROPOSED NEW WORKS                 |

| ISSUE | DATE     | REVISION    |
|-------|----------|-------------|
| 01    | 31/10/19 | DA Issue    |
| 02    | 11/5/20  | DA Revision |

DRAWN BY KH CHECKED BY KH  
IF ISSUE IS INITIALED AS CHECKED DRAWING CAN BE CONSIDERED APPROVED UNDER NMA QUALITY MANAGEMENT SYSTEM

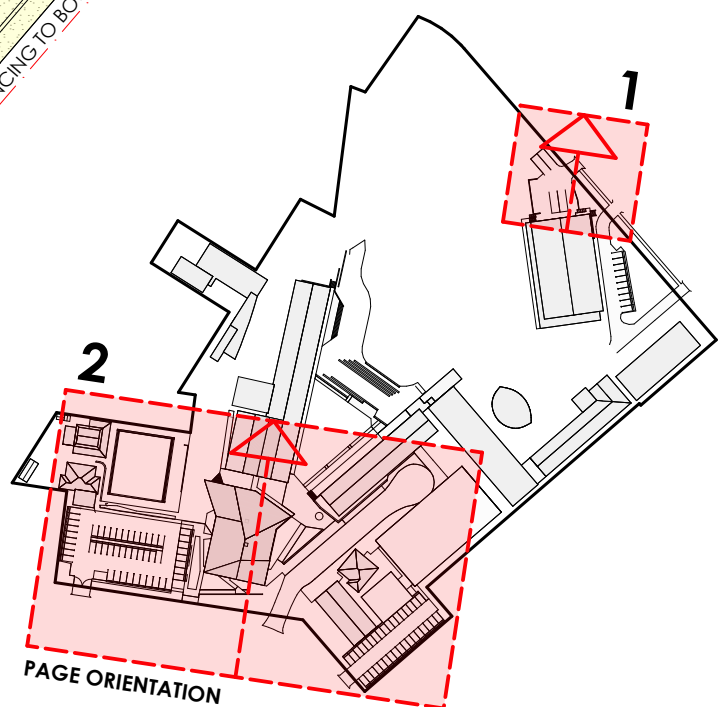
The Pittwater House Schools  
70 South Creek Rd, Collaroy NSW 2097

FOR The Pittwater House Schools

| NO    | REV | TITLE   | PHASE | SCALE     | DATE    |
|-------|-----|---------|-------|-----------|---------|
| DA 09 | 03  | TRAFFIC | DA    | 1:200 @A1 | 11/5/20 |

Copyright in all documents and drawings prepared by NEESON MURCUTT ARCHITECTS and in any works executed from those documents and drawings shall remain the property of, or on creation vest in NEESON MURCUTT ARCHITECTS, Pty Ltd

THIS PLAN IS TO BE READ IN  
CONJUNCTION WITH  
THE CONDITIONS OF DEVELOPMENT  
CONSENT  
MOD2021/0369

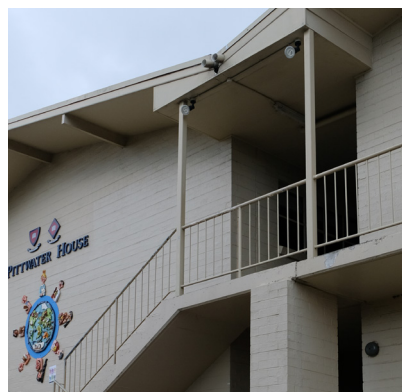


NEESON MURCUTT + NEILLE  
NEESON MURCUTT ARCHITECTS PTY LTD  
L1 9 ROSLYN ST POTTS POINT 2011 T: 8203 1870  
NOMINATED ARCHITECT: RACHEL NEESON No. 6692



EXISTING

M-BLOCK



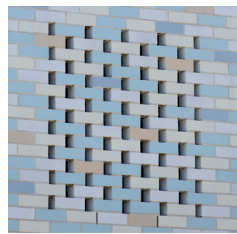
Painted brick walls  
Surfmist corrugated metal  
roof

PROPOSED

LIBRARY + STUDENT SERVICES BUILDING

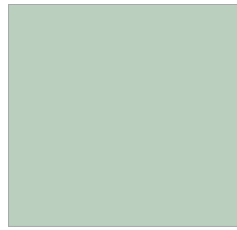
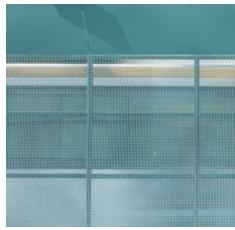


**MR**  
**MC**  
Metal Deck Roofing / Cladding  
White



**FBG**  
Face Glazed Brick

**FBGS**  
Face Glazed Brick Screen

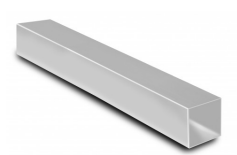


**PM**  
Perforated Metal Screen  
Powdercoat/ Paint finish



**TD**  
**TW**  
Timber Doors & Windows  
Accoya, clear finish

Glazing  
Clear

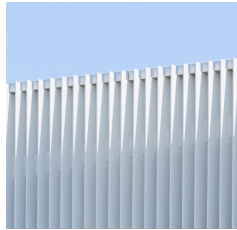


**AD**  
**AW**  
Aluminium Doors & Windows  
Clear finished, anodised

Glazing  
Clear



**LO-1**  
External Louvres - Adjustable  
Powdercoat White



**LO-2**  
External Louvres - Fixed  
Powdercoat White

EXISTING

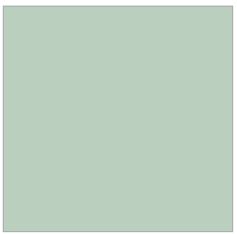
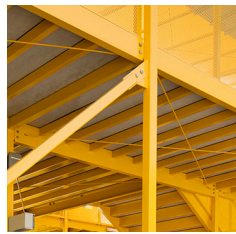
SOUTH + WEST WING



Face brick walls  
Painted concrete

PROPOSED

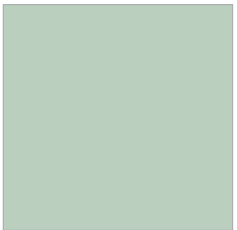
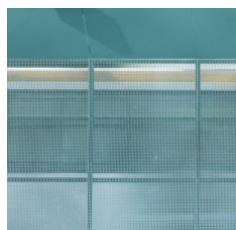
SOUTH + WEST WING VERANDAHS & UNIVERSAL CORE



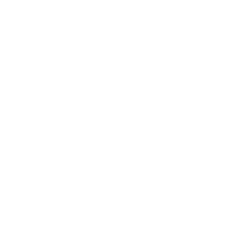
Exposed Steel Frame Structure  
Powdercoat/ Paint finish



**CON**  
Concrete Verandah

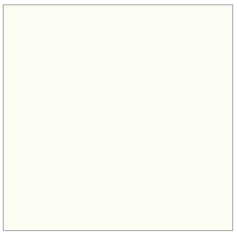


**PM**  
Perforated Metal Screen Balustrade  
Powdercoat/ Paint finish



**BW**  
**PF**  
Blockwork  
Render + Paint Finish

Concrete stairs



**MR**  
**MC**  
Metal Deck Roofing / Cladding  
White



**AD**  
**AW**  
Aluminium Doors & Windows  
Clear finished, anodised

Glazing  
Clear



**NOTE:**  
REFER TO LANDSCAPE ARCHITECTS DRAWINGS FOR LANDSCAPE MATERIALS AND FINISHES

LEGEND

**AD** ALUMINIUM DOOR  
**AW** ALUMINIUM WINDOW  
**BS** ROCK GUTTER  
**BR** BRICK  
**BAUS** STEEL BALUSTRADE  
**BW** BLOCKWORK  
**EX-FL** EXISTING FLOORING  
**CDNC** CONCRETE  
**CPT** CARPET  
**CT** CERAMIC TILE  
**DN** DOWNPIPE  
**EXT** EXISTING  
**TC-1** FIBRE CEMENT FLOORING  
**FG** FIXED GLASS  
**FR** FRODO  
**FW** FLOOR WASTE

**FBG** GLAZED FACE BRICK  
**FBGS** GLAZED FACE BRICK SCREEN  
**JU** JOINERY UNIT  
**LO-1** EXTERNAL LOUVRES - RETRACTABLE  
**LO-2** EXTERNAL LOUVRES - FIXED, HORIZONTAL  
**MAT** ENTRY MAT  
**MC** METAL CLADDING  
**MR** METAL ROOFING  
**PERC** PERFORATED METAL  
**PF** RENDER AND PAINT FINISH  
**RUB** RUBBER FLOORING  
**RWO** RAINWATER OUTLET  
**SK** SKYLIGHT  
**TD** TIMBER DOOR JOINERY  
**TW** TIMBER WINDOW JOINERY

LEGEND

 EXISTING ELEMENTS TO BE RETAINED  
 EXISTING ELEMENTS TO BE DEMOLISHED

**REVISION** **DATE** **ISSUE**  
01 31/10/19 DA Issue  
02 25/5/21 SECTION 4.55 ISSUE

**DRAWN BY LS** **CHECKED BY GP**  
IF ISSUE IS INITIALED AS CHECKED DRAWING CAN BE CONSIDERED APPROVED UNDER NMA QUALITY MANAGEMENT SYSTEM

**The Pittwater House Schools**  
70 South Creek Rd, Collaroy NSW 2097

**NEESON MURCUTT + NEILLE**  
NEESON MURCUTT ARCHITECTS PTY LTD  
L1 9 ROSLYN ST POTTS POINT 2011 T: 8203 1870  
NOMINATED ARCHITECT : RACHEL NEESON No. 6692

FOR **The Pittwater House Schools**

| NO    | REV | TITLE                             | PHASE | SCALE | DATE    |
|-------|-----|-----------------------------------|-------|-------|---------|
| DA 11 | 02  | SCHEDULE OF COLOURS AND MATERIALS | DA    | @A1   | 25/5/21 |

Copyright in all documents and drawings prepared by NEESON MURCUTT ARCHITECTS and in any works executed from those documents and drawings shall remain the property of, or on creation vest in NEESON MURCUTT ARCHITECTS, Pty Ltd ©







| LEGEND    |      |  |                          |      |   |                         |      |   |
|-----------|------|--|--------------------------|------|---|-------------------------|------|---|
| REFERENCE | CODE | DESCRIPTION  | REFERENCE                | CODE | DESCRIPTION   | REFERENCE               | CODE | DESCRIPTION   |
| GENERAL   |      |  | GENERAL                  |      |   | PAVING/SURFACE FINISHES |      |   |
|           |      | SITE BOUNDARY  |                          |      | SUBSTATION<br>Refer Eleitrical Engineer's drawings  |                         |      | PAVING TYPE 6 - GRAVEL<br>Recycled crushed sandstone  |
|           |      | EXISTING CONTOUR   |                          |      | NEW FIRE HYDRANT BOOSTER<br>L:3500 x W:500mm, Refer Hydraulic Engineer's drawing                |                         |      | PAVING TYPE 7 - MIXED USE COURT<br>Synthetic surface with mutple lineworking for multi-funtion play |
|           |      | PROPOSED CONTOUR   |                          |      | NEW DUAL HEAD FIRE HYDRANT<br>700x700mm, Refer Hydraulic Engineer's drawing                     |                         |      | PAVING TYPE 8 - SYNTHETIC GRASS<br>"Astroturf" or simililar, natural green colour                   |
|           |      | EXISTING SPOT LEVEL  | WALLS, FENCES AND EDGES  |      |   |                         |      | PAVING TYPE 9 - MULCH (PLAYGROUND)<br>Cedar mulch to depths required for full zones                 |
|           |      | PROPOSED SPOT LEVEL  |                          |      | WALL TYPE 1 - CONCRETE TERRACE/SEATING WALLS<br>Precast concrete plain colour                   |                         |      | PAVING TYPE 10 - FRP GRATING<br>FRP grating on steel frame to Engineer's detail                     |
|           |      | EXISTING TREES RETAINED<br>(Refer arborist report)   |                          |      | WALL TYPE 2 - SANDSTONE RETAINING WALL<br>Using sandstone "landscape logs", quality grade 1     | OTHER                   |      |   |
|           |      | EXISTING TREES TO BE REMOVED<br>(Refer arborist report)  |                          |      | FENCE TYPE 1 - METAL PALISADE FENCE<br>1200mm high metal palisade pool fence to A.S 1926.1-2012 |                         |      | HARDWOOD TIMBER DECKING<br>bridges  |
|           |      | DEMOLISH SURFACE   |                          |      | FENCE TYPE 2 - GALVANISED FENCE<br>1800mm high galvanised school fence                          |                         |      | TIMBER BENCH SEAT   |
|           |      | OVAL BOUNDARY  |                          |      | FENCE TYPE 3 - GALVANISED PALISADE FENCE<br>1200mm high galvanised palisade school fence        |                         |      | WHEEL STOPS   |
|           |      | EXISTING POOL FENCE  |                          |      | FENCE TYPE 4 - PALING FENCE<br>1800mm high noise barrier to comply with acoustic req.           |                         |      | BOLLARD   |
|           |      | SWALE  |                          |      | EDGE TYPE 1 - STEEL   |                         |      | NATURE PLAY ITEMS   |
|           |      | BERM AROUND OVAL<br>500-800mm above existing ground level,<br>refer Hydraulic Engineer's drawing | CARPARK/SURFACE FINISHES |      |   |                         |      |   |
|           |      | EXISTING PAVED SURFACE<br>to be retained   |                          |      | CARPARK SURFACE - BITUMEN   |                         |      |   |
|           |      | EXISTING BITUMEN SURFACE<br>to be retained   | PAVING/SURFACE FINISHES  |      |   |                         |      |   |
|           |      | EXISTING GRAVEL SURFACE<br>to be retained  |                          |      | PAVING TYPE 1 - INSITU CONCRETE<br>Broom finish, plain colour                                   |                         |      |   |
|           |      | EXISTING DECKING<br>to be retained   |                          |      | PAVING TYPE 2 - INSITU CONCRETE FLUSH KERB/EDGE<br>Broom finish, plain colour                   |                         |      |   |
|           |      | EXISTING PLANTED AREA<br>to be retained  |                          |      | PAVING TYPE 3 - PERVIOUS PAVING (CARPARK)<br>Grasscrete with gravel infill                      |                         |      |   |
|           |      | EXISTING DRY CREEK<br>to be retained   |                          |      | PAVING TYPE 4 - CONCRETE UNIT PAVER<br>Pebblecrete PPX540:35D - 400x600x60mm                    |                         |      |   |
|           |      | EXISTING NATURE SURFACE<br>to be retained  |                          |      | PAVING TYPE 5 - CONCRETE UNIT PAVER (TRAFFICABLE)<br>Pebblecrete PPX540:35D - 200x600x80mm      |                         |      |   |

THIS PLAN IS TO BE READ IN CONJUNCTION WITH THE CONDITIONS OF DEVELOPMENT CONSENT

MOD2021/0369

NOT FOR CONSTRUCTION

northern  
beaches  
council

THIS PLAN IS TO BE READ IN  
CONJUNCTION WITH  
THE CONDITIONS OF DEVELOPMENT  
CONSENT  
MOD2021/0369

|       |                   |          |    |   |  |   |   |   |  |
|-------|-------------------|----------|----|---|--|---|---|---|--|
|       |                   |          |    | <div>-Dimension in millimetres.<br/>-Confirm all dimensions and levels on site prior to commencing work.<br/>-Use figured dimensions only.<br/>-Do not scale.<br/>-Comply with relevant authorities requirements , the Building Code of Australia and all relevant Australian Standards when executing works described in this drawing.</div> | <div>LANDSCAPE ARCHITECT</div> <div><div>jane irwin landscape architecture</div><div>Studio 203, Level2, 61 Marlborough Street<br/>Sunny Hills NSW 2010<br/>Telephone 61 2 9212 6957<br/>Email info@jila.net.au<br/>Web www.jila.net.au</div><div>jila</div></div> | <div>CILIENT</div> <div>Neeson Murcutt Architects PTY LTD</div> | <div>PROJECT TITLE</div> <div>Pittwater House Schools - Stage 1</div> <div>70 South Creek Road, Collaroy NSW 2097</div> | <div>DRAWING TITLE</div> <div>Legend and Schedule</div> <div>Scale @ A3<br/>N/A</div> <div>Job No<br/>190601</div> <div>Drawing Status<br/>\$4.55 Application</div> <div>Drawing No<br/>L-DA-001</div> <div>Issue<br/>B</div> |  |
| B     | ISSUED FOR \$4.55 | 26/5/21  | AH |   |  |   |   |   |  |
| A     | ISSUED FOR DA     | 24/10/19 | AH |   |  |   |   |   |  |
| Issue | Description       | Date     | By |   |  |   |   |   |  |

Drafted By: AH

Drafting Checked: JI

© JILA



## CALCULATION OF LANDSCAPE OPEN SPACE

|      | Preliminary Plant Schedule                        |                            |                   |                   |
|------|---|----------------------------|-------------------|-------------------|
| CODE | BOTANICAL NAME                                    | COMMON NAME                | MATURE HEIGHT (m) | LOCALLY OCCURRING |
|      | Trees   |                            |                   |                   |
| T1   | <i>Angophora costata</i>                          | Rough Barked Apple         | 20+               | x                 |
| T2   | <i>Callicoma serratifolia</i>                     | Black Wattle               | 7-10              | x                 |
| T3   | <i>Calodendrum capense</i>                        | Cape Chestnut              | 10                |                   |
| T4   | <i>Corymbia citriodora</i>                        | Lemon Scented Gum          | 20+               |                   |
| T5   | <i>Corymbia maculata</i>                          | Spotted Gum                | 20+               | x                 |
| T6   | <i>Eucalyptus haemastoma</i>                      | Scribbly Gum               | 15                |                   |
| T7   | <i>Eucalyptus punctata</i>                        | Grey Gum                   | 20+               | x                 |
| T8   | <i>Lagerstroemia indica</i> (Indian Summer range) | Crepe Myrtle               | 8-9               |                   |
| T9   | <i>Magnolia grandiflora</i>                       | Bull Bay Magnolia          | 25                |                   |
| T10  | <i>Melaleuca ericifolia</i>                       | Swamp Paperbark            | 8                 | x                 |
| T11  | <i>Nyssa sylvatica</i>                            | Tupelo                     | 11                |                   |
| T12  | <i>Sapium sebiferum</i>                           | Chinese Tallowood          | 8                 |                   |
| T13  | <i>Tristanopsis laurina</i>                       | Water Gum                  | 12                | x                 |
| T14  | <i>Cercis canadensis</i> 'Forest Pansy'           | Redbud                     | 5                 |                   |
| GD1  | Screening - tall shrubs and small trees           |                            |                   |                   |
|      | <i>Acacia terminalis</i>                          | Sunshine Wattle            | 5-6               | x                 |
|      | <i>Banksia robur</i>                              | Swamp Banksia              | 3                 | x                 |
|      | <i>Bursaria spinosa</i>                           | Austral Blackthorn         | 5-10              | x                 |
|      | <i>Ceratopetalum gummiferum</i>                   | NSW Christmas Bush         | 3-5               | x                 |
|      | <i>Dodonaea viscosa</i> subsp. <i>cuneata</i>     | Hop Bush                   | 3                 | x                 |
|      | <i>Persoonia levis</i>                            | Broad Leaved Geebung       | 4-5               | x                 |
| GD2  | Low to medium native shrubs                       |                            |                   |                   |
|      | <i>Banksia spinulosa</i>                          | Hairpin Banksia            | 1-3               | x                 |
|      | <i>Grevillea buxifolia</i>                        | Grey Spider Flower         | 1-2.5             | x                 |
|      | <i>Grevillea sericea</i>                          | Pink Spider Flower         | 1-2               | x                 |
|      | <i>Lomatia myricoides</i>                         | River Lomatia              | 2.5               | x                 |
|      | <i>Melaleuca thymifolia</i>                       | Thyme Honey Myrtle         | 1.2               | x                 |
|      | <i>Philotheca myoporoides</i>                     | Long Leaf Waxflower        | 1.5-2             |                   |
|      | <i>Prostanthera denticulata</i>                   | Rough Mint Bush            | 1                 | x                 |
| GD3  | Groundcover and grassy mix - banks                |                            |                   |                   |
|      | <i>Banksia</i> 'Pygmy Possum'                     | Dwarf Banksia              | 0.3               |                   |
|      | <i>Dianella caerulea</i>                          | Blue Flax Lily             | 0.7               | x                 |
|      | <i>Eremophila</i> 'Kalbarri Carpet'               | Prostrate Emu Bush         | 0.1-0.2           |                   |
|      | <i>Geranium solanderi</i>                         | Native Geranium            | 0.2               | x                 |
|      | <i>Goodenia heterophylla</i>                      | Variable Leaved Goodenia   | 0.4               | x                 |
|      | <i>Grevillea lanigera</i>                         | Woolly Grevillea           | 0.5-1             |                   |
|      | <i>Lomandra longifolia</i>                        | Mat Rush                   | 0.5-0.8           | x                 |
|      | <i>Scaevola albida</i>                            | White Fan-flower           | Prostrate         | x                 |
|      | <i>Scaevola ramosissima</i>                       | Purple Fan Flower          | 0.4               | x                 |
|      | <i>Thryptomene baeckeaceae</i> 'Prostrate'        | Ground Cover Thryptomene   | Prostrate         |                   |
| GD4  | Entry garden                                      |                            |                   |                   |
|      | <i>Anigozanthos</i> spp.                          | Kangaroo Paws mixed colour | 0.6-1             |                   |
|      | <i>Lomandra multiflora</i>                        | Many Flowered Mat Rush     | 0.6-0.9           | x                 |
|      | <i>Lomandra confertifolia</i> 'Wingarra'          | Mat Rush                   | 0.3               |                   |
| GD5  | <i>Xanthorrhoea arborea</i>                       | Broad Leaf Grass Tree      | 2                 | x                 |
|      | Swale/dry creek bed                               |                            |                   |                   |
|      | <i>Ficinia nodosa</i>                             | Knobby Club Rush           | 0.5-0.6           | x                 |
|      | <i>Gahnia aspera</i>                              | Rough Saw Sedge            | 0.6-0.8           | x                 |
|      | <i>Lepidosperma laterale</i>                      | Variable Sword Sedge       | 0.6-1.2           | x                 |
|      |   |                            |                   |                   |
|      |   |                            |                   |                   |

THIS PLAN IS TO BE READ IN  
CONJUNCTION WITH  
CALCULATED AREA IN TOTAL (m<sup>2</sup>) : 16837.17m<sup>2</sup>  
THE CONDITIONS OF DEVELOPMENT  
CONSENT

PAVED OPEN SPACE  
IMPERVIOUS SURFACE: MOD2021/0369  
4732.03 m2

PERVIOUS SURFACE: 709.59 m2

## LANDSCAPE OPEN SPACE

**SOFTSCAPE:** 11395.55 m2

NOTE: Planted and grassed deep soil area, excludes swimming pool

**NOT FOR CONSTRUCTION**

|       |                   |          |    |  |   |
|-------|-------------------|----------|----|--|---|
|       |                   |          |    |  | <ul style="list-style-type: none"><li>-Dimension in millimetres.</li><li>-Confirm all dimensions and levels on site prior to commencing work.</li><li>-Use figured dimensions only.</li><li>-Do not scale.</li><li>-Comply with relevant authorities requirements, the Building Code of Australia and all relevant Australian Standards when executing works described in this drawing.</li></ul> |
| B     | ISSUED FOR \$4.55 | 26/5/21  | AH |  |   |
| A     | ISSUED FOR DA     | 24/10/19 | AH |  | Copyright in all documents and drawings prepared by JILA and in any work executed from those documents and drawings shall remain the property of JILA or on creation vest in JILA.  |
| Issue | Description       | Date     | By |  |   |

|  |
|--|
| LANDSCAPE ARCHITECT  |
| <p><b>jane irwin landscape architecture</b></p> <p>Studio 203, Level2, 61 Marlborough Street<br/>Surry Hills NSW 2010<br/>Telephone <b>61 2 9212 6957</b><br/>Email <a href="mailto:info@jila.net.au">info@jila.net.au</a><br/>Web <a href="http://www.jila.net.au">www.jila.net.au</a></p> <p><b>jila</b></p> |

|   |
|---|
| CILIENT   |
| <p><b>Neeson Murcutt Architects PTY LTD</b></p> |

|   |
|---|
| PROJECT TITLE   |
| <p><b>Pittwater House Schools - Stage 1</b></p>       |
| <p>70 South Creek<br/>Road, Collaroy<br/>NSW 2097</p> |

|   |                    |
|---|--------------------|
| DRAWING TITLE                           |                    |
| <p><b>Legend and Plant Schedule</b></p> |                    |
| Scale @ A3                              |                    |
| N/A                                     |                    |
| Job No                                  | Drawing Status     |
| 190601                                  | \$4.55 Application |
| Drawing No                              | Issue              |
| L-DA-002                                | B                  |



**NOT FOR CONSTRUCTION**

© JILA

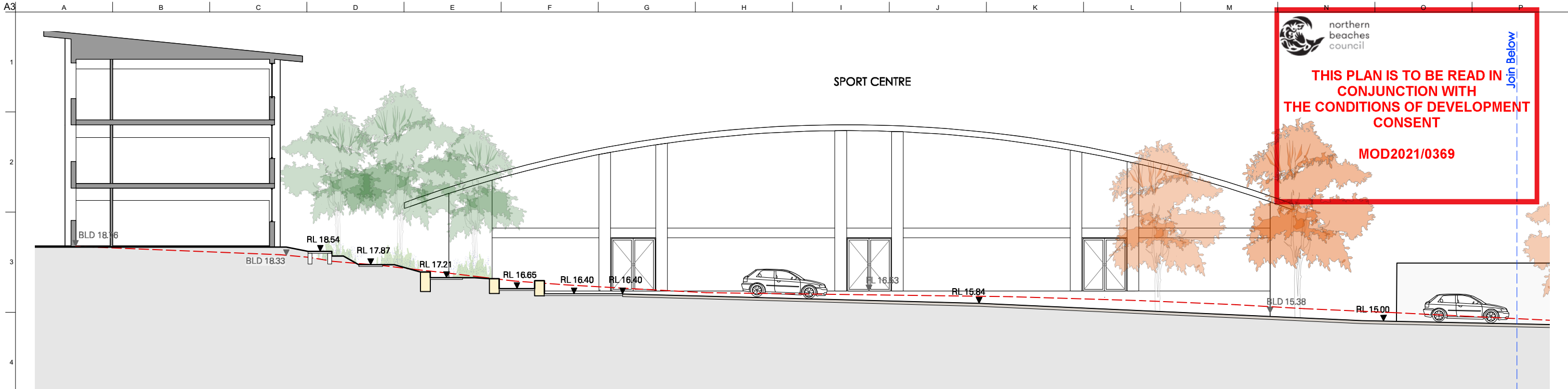




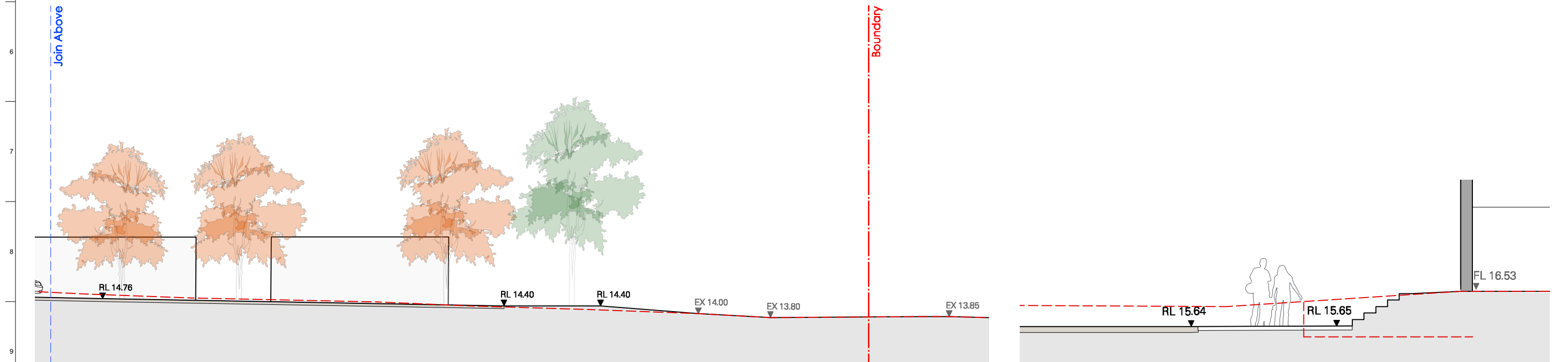








4 Landscape Section  
Scale: 1:200



5 Detail Section  
Scale: 1:100

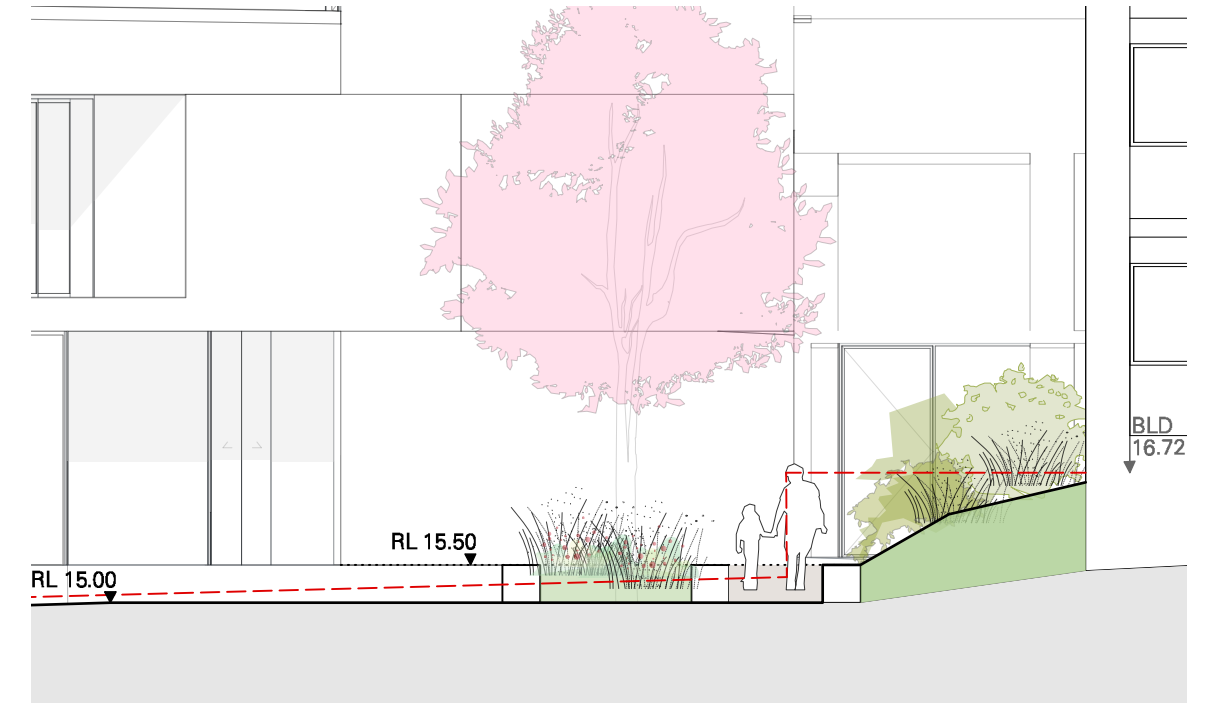
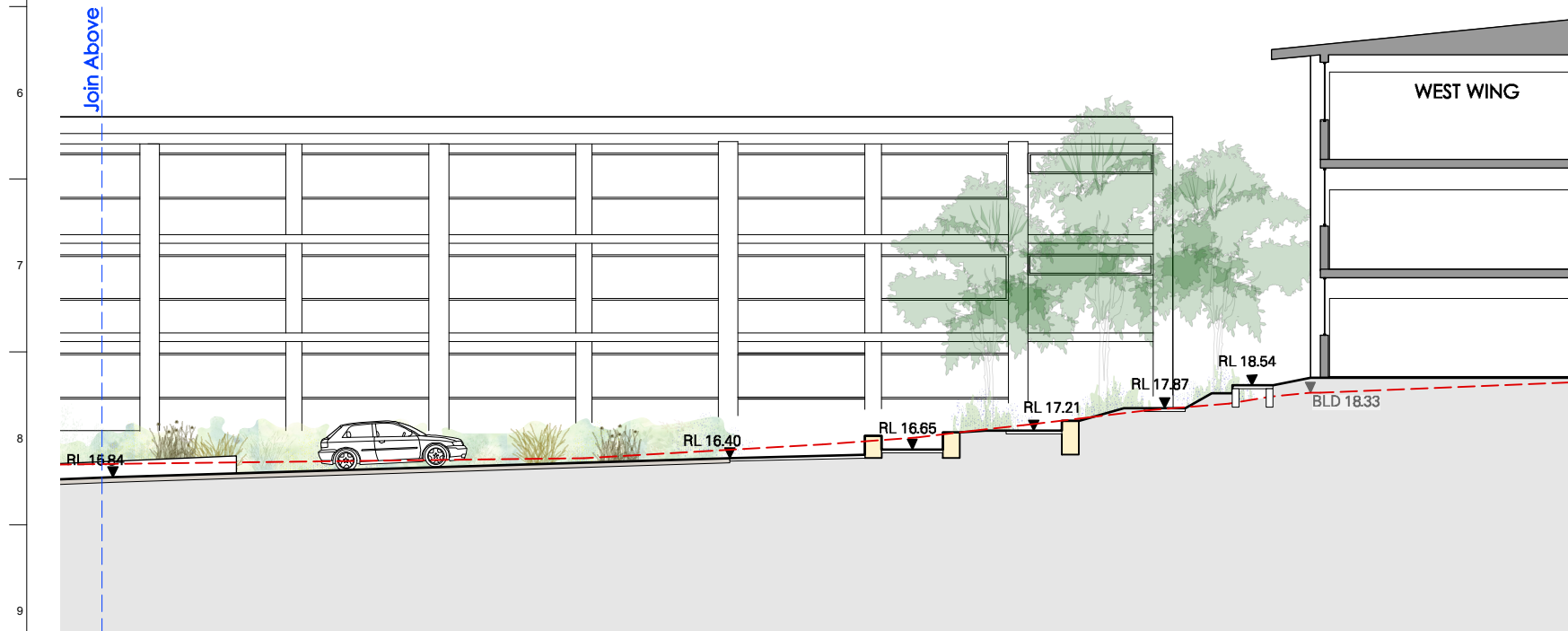
|   |
|---|
| <div><div><div></div><div></div><div></div><div></div></div><div><div>ISSUED FOR \$4.55</div><div>ISSUED FOR DA</div><div></div></div><div><div>26/5/21</div><div>30/09/19</div><div></div></div><div><div>AH</div><div>AH</div><div></div></div></div> <div><div>Copyright in all documents and drawings prepared by JILA and in any work executed from those documents and drawings shall remain the property of JILA or on creation vest in JILA.</div></div> <div><div>LANDSCAPE ARCHITECT</div><div><div>jane irwin landscape architecture</div><div>Studio 203, Level 2, 61 Marlborough Street<br/>Sunny Hills NSW 2010<br/>Telephone 61 2 9212 6957<br/>Email info@jila.net.au<br/>Web www.jila.net.au</div></div><div><div>jila</div></div></div> <div><div>CLIENT</div><div>Neeson Murcutt Architects PTY LTD</div></div> <div><div>PROJECT TITLE</div><div>Pittwater House Schools - Stage 1.A</div><div>70 South Creek Road, Collaroy NSW 2097</div></div> <div><div>DRAWING TITLE</div><div>Landscape Section</div><div>Scale @ A3<br/>Varies</div><div><div>Job No<br/>190601</div><div>Drawing Status<br/>\$4.55 Application</div></div><div><div>Drawing No<br/>L-DA-502</div><div>Issue<br/>B</div></div></div> |
|---|





6 Landscape Section  
Scale: 1:200

kiss and drop



7 Detail Section  
Scale: 1:100

Drop off/pick up driveway

Crossing

Accessible path to Building

path

bench seating

path

planted bank

NOT FOR CONSTRUCTION

- Dimension in millimetres.  
- Confirm all dimensions and levels on site prior to commencing work.  
- Use figured dimensions only.  
- Do not scale.  
- Comply with relevant authorities requirements, the Building Code of Australia and all relevant Australian Standards when executing works described in this drawing.

Copyright in all documents and drawings prepared by JILA and in any work executed from those documents and drawings shall remain the property of JILA or on creation vest in JILA.

LANDSCAPE ARCHITECT

jane irwin landscape architecture  
Studio 203, Level 2, 61 Marlborough Street  
Sunny Hills NSW 2010  
Telephone 61 2 9212 6957  
Email info@jila.net.au  
Web www.jila.net.au

jila

CLIENT

Neeson Murcutt Architects PTY LTD

PROJECT TITLE

Pittwater House Schools - Stage 1.A

70 South Creek Road, Collaroy NSW 2097

DRAWING TITLE

Landscape Section

Scale @ A3  
1:200

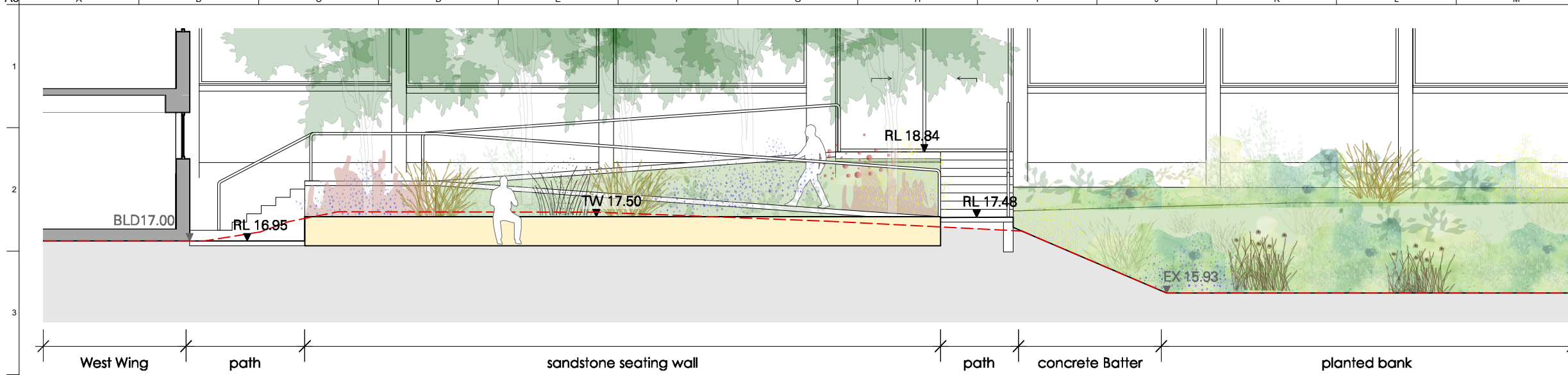
Job No  
190601

Drawing Status  
\$4.55 Application

Drawing No  
L-DA-503

Issue  
B



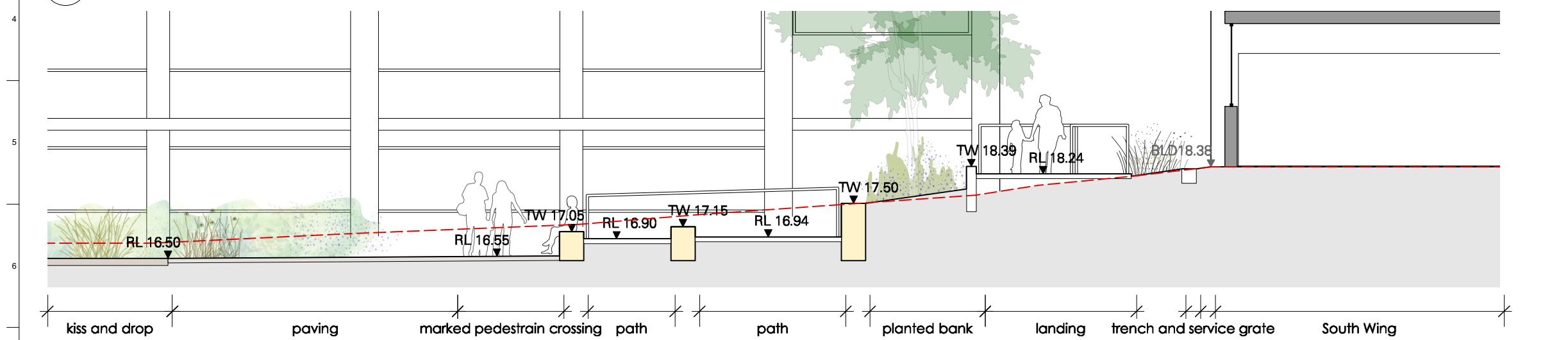


 northern  
beaches  
council

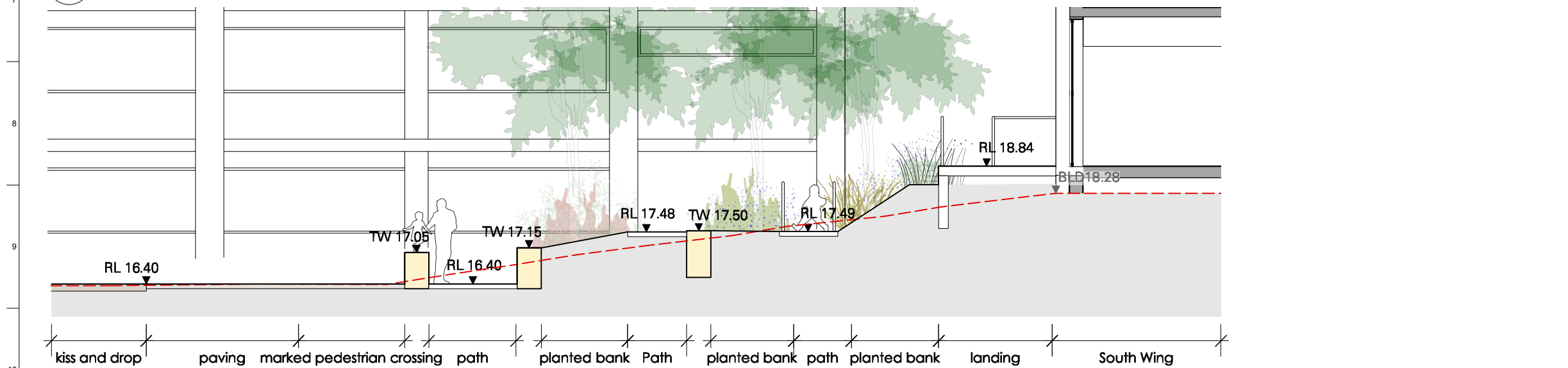
**THIS PLAN IS TO BE READ IN  
CONJUNCTION WITH  
THE CONDITIONS OF DEVELOPMENT  
CONSENT**

**MOD2021/0369**

17 Detail Landscape  
Scale: 1:100



18 Detail Section  
Scale: 1:100



19 Detail Section  
Scale: 1:100

|  |  |  |  |  |  |  |  |  |  |  |  |  |  |  |  |  |  |  |  |  |  |  |  |  |  |  |  |  |  |  |  |  |  |  |  |  |  |  |  |  |  |  |  |  |  |  |  |  |  |  |  |  |  |  |  |  |  |  |  |  |  |  |  |  |  |  |  |  |  |  |  |  |  |  |  |  |  |  |  |  |  |  |  |  |  |  |  |  |  |  |  |  |  |  |  |  |  |  |  |  |  |  |  |  |  |  |  |  |  |  |  |  |  |  |  |  |  |  |  |  |  |  |  |  |  |  |  |  |  |  |  |  |  |  |  |  |  |  |  |  |  |  |  |  |  |  |  |  |  |  |  |  |  |  |  |  |  |  |  |  |  |  |  |  |  |  |  |  |  |  |  |  |  |  |  |  |  |  |  |  |  |  |  |  |  |  |  |  |  |  |  |  |  |  |  |  |  |  |  |  |  |  |  |  |  |  |  |  |  |  |  |  |  |  |  |  |  |  |  |  |  |  |  |  |  |  |  |  |  |  |  |  |  |  |  |  |  |  |  |  |  |  |  |  |  |  |  |  |  |  |  |  |  |  |  |  |  |  |  |  |  |  |  |  |  |  |  |  |  |  |  |  |  |  |  |  |  |  |  |  |  |  |  |  |  |  |  |  |  |  |  |  |  |  |  |  |  |  |  |  |  |  |  |  |  |  |  |  |  |  |  |  |  |  |  |  |  |  |  |  |  |  |  |  |  |  |  |  |  |  |  |  |  |  |  |  |  |  |  |  |  |  |  |  |  |  |  |  |  |  |  |  |  |  |  |  |  |  |  |  |  |  |  |  |  |  |  |  |  |  |  |  |  |  |  |  |  |  |  |  |  |  |  |  |  |  |  |  |  |  |  |  |  |  |  |  |  |  |  |  |  |  |  |  |  |  |  |  |  |  |  |  |  |  |  |  |  |  |  |  |  |  |  |  |  |  |  |  |  |  |  |  |  |  |  |  |  |  |  |  |  |  |  |  |  |  |  |  |  |  |  |  |  |  |  |  |  |  |  |  |  |  |  |  |  |  |  |  |  |  |  |  |  |  |  |  |  |  |  |  |  |  |  |  |  |  |  |  |  |  |  |  |  |  |  |  |  |  |  |  |  |  |  |  |  |  |  |  |  |  |  |  |  |  |  |  |  |  |  |  |  |  |  |  |  |  |  |  |  |  |  |  |  |  |  |  |  |  |  |  |  |  |  |  |  |  |  |  |  |  |  |  |  |  |  |  |  |  |  |  |  |  |  |  |  |  |  |  |  |  |  |  |  |  |  |  |  |  |  |  |  |  |  |  |  |  |  |  |  |  |  |  |  |  |  |  |  |  |  |  |  |  |  |  |  |  |  |  |  |  |  |  |  |  |  |  |  |  |  |  |  |  |  |  |  |  |  |  |  |  |  |  |  |  |  |  |  |  |  |  |  |  |  |  |  |  |  |  |  |  |  |  |  |  |  |  |  |  |  |  |  |  |  |  |  |  |  |  |  |  |  |  |  |  |  |  |  |  |  |  |  |  |  |  |  |  |  |  |  |  |  |  |  |  |  |  |  |  |  |  |  |  |  |  |  |  |  |  |  |  |  |  |  |  |  |  |  |  |  |  |  |  |  |  |  |  |  |  |  |  |  |  |  |  |  |  |  |  |  |  |  |  |  |  |  |  |  |  |  |  |  |  |  |  |  |  |  |  |  |  |  |  |  |  |  |  |  |  |  |  |  |  |  |  |  |  |  |  |  |  |  |  |  |  |  |  |  |  |  |  |  |  |  |  |  |  |  |  |  |  |  |  |  |  |  |  |  |  |  |  |  |  |  |  |  |  |  |  |  |  |  |  |  |  |  |  |  |  |  |  |  |  |  |  |  |  |  |  |  |  |  |  |  |  |  |  |  |  |  |  |  |  |  |  |  |  |  |  |  |  |  |  |  |  |  |  |  |  |  |  |  |  |  |  |  |  |  |  |  |  |  |  |  |  |  |  |  |  |  |  |  |  |  |  |  |  |  |  |  |  |  |  |  |  |  |  |  |  |  |  |  |  |  |  |  |  |  |  |  |  |  |  |  |  |  |  |  |  |  |  |  |  |  |  |  |  |  |  |  |  |  |  |  |  |  |  |  |  |  |  |  |  |  |  |  |  |  |  |  |  |  |  |  |  |  |  |  |  |  |  |  |  |  |  |  |  |  |  |  |  |  |  |  |  |  |  |  |  |  |  |  |  |  |  |  |  |  |  |  |  |  |  |  |  |  |  |  |  |  |  |  |  |  |  |  |  |  |  |  |  |  |  |  |  |  |  |  |  |  |  |  |  |  |  |  |  |  |  |  |  |  |  |  |  |  |  |  |  |  |  |  |  |  |  |  |  |  |  |  |  |  |  |  |  |  |  |  |  |  |  |  |  |  |  |  |  |  |  |  |  |  |  |  |  |  |  |  |  |  |  |  |  |  |  |  |  |  |  |  |  |  |  |  |  |  |  |  |  |  |  |  |  |  |  |  |  |  |  |  |  |  |  |  |  |  |  |  |  |  |  |  |  |  |  |  |  |  |  |  |  |  |  |  |  |  |  |  |  |  |  |  |  |  |  |  |  |  |  |  |  |  |  |  |  |  |  |  |  |  |  |  |  |  |  |  |  |  |  |  |  |  |  |  |  |  |  |  |  |  |  |  |  |  |  |  |  |  |  |  |  |  |  |  |  |  |  |  |  |  |  |  |  |  |  |  |  |  |  |  |  |  |  |  |  |  |  |  |  |  |  |  |  |  |  |  |  |  |  |  |  |  |  |  |  |  |  |  |  |  |  |  |  |  |  |  |  |  |  |  |  |  |  |  |  |  |  |  |  |  |  |  |  |  |  |  |  |  |  |  |  |  |  |  |  |  |  |  |  |  |  |  |  |  |  |  |  |  |  |  |  |  |  |  |  |  |  |  |  |  |  |  |  |  |  |  |  |  |  |  |  |  |  |  |  |  |  |  |  |  |  |  |  |  |  |  |  |  |  |  |  |  |  |  |  |  |  |  |  |  |  |  |  |  |  |  |  |  |  |  |  |  |  |  |  |  |  |  |  |  |  |  |  |  |  |  |  |  |  |  |  |  |  |  |
|--|--|--|--|--|--|--|--|--|--|--|--|--|--|--|--|--|--|--|--|--|--|--|--|--|--|--|--|--|--|--|--|--|--|--|--|--|--|--|--|--|--|--|--|--|--|--|--|--|--|--|--|--|--|--|--|--|--|--|--|--|--|--|--|--|--|--|--|--|--|--|--|--|--|--|--|--|--|--|--|--|--|--|--|--|--|--|--|--|--|--|--|--|--|--|--|--|--|--|--|--|--|--|--|--|--|--|--|--|--|--|--|--|--|--|--|--|--|--|--|--|--|--|--|--|--|--|--|--|--|--|--|--|--|--|--|--|--|--|--|--|--|--|--|--|--|--|--|--|--|--|--|--|--|--|--|--|--|--|--|--|--|--|--|--|--|--|--|--|--|--|--|--|--|--|--|--|--|--|--|--|--|--|--|--|--|--|--|--|--|--|--|--|--|--|--|--|--|--|--|--|--|--|--|--|--|--|--|--|--|--|--|--|--|--|--|--|--|--|--|--|--|--|--|--|--|--|--|--|--|--|--|--|--|--|--|--|--|--|--|--|--|--|--|--|--|--|--|--|--|--|--|--|--|--|--|--|--|--|--|--|--|--|--|--|--|--|--|--|--|--|--|--|--|--|--|--|--|--|--|--|--|--|--|--|--|--|--|--|--|--|--|--|--|--|--|--|--|--|--|--|--|--|--|--|--|--|--|--|--|--|--|--|--|--|--|--|--|--|--|--|--|--|--|--|--|--|--|--|--|--|--|--|--|--|--|--|--|--|--|--|--|--|--|--|--|--|--|--|--|--|--|--|--|--|--|--|--|--|--|--|--|--|--|--|--|--|--|--|--|--|--|--|--|--|--|--|--|--|--|--|--|--|--|--|--|--|--|--|--|--|--|--|--|--|--|--|--|--|--|--|--|--|--|--|--|--|--|--|--|--|--|--|--|--|--|--|--|--|--|--|--|--|--|--|--|--|--|--|--|--|--|--|--|--|--|--|--|--|--|--|--|--|--|--|--|--|--|--|--|--|--|--|--|--|--|--|--|--|--|--|--|--|--|--|--|--|--|--|--|--|--|--|--|--|--|--|--|--|--|--|--|--|--|--|--|--|--|--|--|--|--|--|--|--|--|--|--|--|--|--|--|--|--|--|--|--|--|--|--|--|--|--|--|--|--|--|--|--|--|--|--|--|--|--|--|--|--|--|--|--|--|--|--|--|--|--|--|--|--|--|--|--|--|--|--|--|--|--|--|--|--|--|--|--|--|--|--|--|--|--|--|--|--|--|--|--|--|--|--|--|--|--|--|--|--|--|--|--|--|--|--|--|--|--|--|--|--|--|--|--|--|--|--|--|--|--|--|--|--|--|--|--|--|--|--|--|--|--|--|--|--|--|--|--|--|--|--|--|--|--|--|--|--|--|--|--|--|--|--|--|--|--|--|--|--|--|--|--|--|--|--|--|--|--|--|--|--|--|--|--|--|--|--|--|--|--|--|--|--|--|--|--|--|--|--|--|--|--|--|--|--|--|--|--|--|--|--|--|--|--|--|--|--|--|--|--|--|--|--|--|--|--|--|--|--|--|--|--|--|--|--|--|--|--|--|--|--|--|--|--|--|--|--|--|--|--|--|--|--|--|--|--|--|--|--|--|--|--|--|--|--|--|--|--|--|--|--|--|--|--|--|--|--|--|--|--|--|--|--|--|--|--|--|--|--|--|--|--|--|--|--|--|--|--|--|--|--|--|--|--|--|--|--|--|--|--|--|--|--|--|--|--|--|--|--|--|--|--|--|--|--|--|--|--|--|--|--|--|--|--|--|--|--|--|--|--|--|--|--|--|--|--|--|--|--|--|--|--|--|--|--|--|--|--|--|--|--|--|--|--|--|--|--|--|--|--|--|--|--|--|--|--|--|--|--|--|--|--|--|--|--|--|--|--|--|--|--|--|--|--|--|--|--|--|--|--|--|--|--|--|--|--|--|--|--|--|--|--|--|--|--|--|--|--|--|--|--|--|--|--|--|--|--|--|--|--|--|--|--|--|--|--|--|--|--|--|--|--|--|--|--|--|--|--|--|--|--|--|--|--|--|--|--|--|--|--|--|--|--|--|--|--|--|--|--|--|--|--|--|--|--|--|--|--|--|--|--|--|--|--|--|--|--|--|--|--|--|--|--|--|--|--|--|--|--|--|--|--|--|--|--|--|--|--|--|--|--|--|--|--|--|--|--|--|--|--|--|--|--|--|--|--|--|--|--|--|--|--|--|--|--|--|--|--|--|--|--|--|--|--|--|--|--|--|--|--|--|--|--|--|--|--|--|--|--|--|--|--|--|--|--|--|--|--|--|--|--|--|--|--|--|--|--|--|--|--|--|--|--|--|--|--|--|--|--|--|--|--|--|--|--|--|--|--|--|--|--|--|--|--|--|--|--|--|--|--|--|--|--|--|--|--|--|--|--|--|--|--|--|--|--|--|--|--|--|--|--|--|--|--|--|--|--|--|--|--|--|--|--|--|--|--|--|--|--|--|--|--|--|--|--|--|--|--|--|--|--|--|--|--|--|--|--|--|--|--|--|--|--|--|--|--|--|--|--|--|--|--|--|--|--|--|--|--|--|--|--|--|--|--|--|--|--|--|--|--|--|--|--|--|--|--|--|--|--|--|--|--|--|--|--|--|--|--|--|--|--|--|--|--|--|--|--|--|--|--|--|--|--|--|--|--|--|--|--|--|--|--|--|--|--|--|--|--|--|--|--|--|--|--|--|--|--|--|--|--|--|--|--|--|--|--|--|--|--|--|--|--|--|--|--|--|--|--|--|--|--|--|--|--|--|--|--|--|--|--|--|--|--|--|--|--|--|--|--|--|--|--|--|--|--|--|--|--|--|--|--|--|--|--|--|--|--|--|--|--|--|--|--|--|--|--|--|--|--|--|--|--|--|--|--|--|--|--|--|--|--|--|--|--|--|--|--|--|--|--|--|--|--|--|--|--|--|--|--|--|--|--|--|--|--|--|--|--|--|--|--|--|--|--|--|--|--|--|--|--|--|--|--|--|--|--|--|--|--|--|--|--|--|--|--|--|--|--|--|--|--|--|--|--|--|--|--|--|--|--|--|--|--|--|--|--|--|
|  |  |  |  |  |  |  |  |  |  |  |  |  |  |  |  |  |  |  |  |  |  |  |  |  |  |  |  |  |  |  |  |  |  |  |  |  |  |  |  |  |  |  |  |  |  |  |  |  |  |  |  |  |  |  |  |  |  |  |  |  |  |  |  |  |  |  |  |  |  |  |  |  |  |  |  |  |  |  |  |  |  |  |  |  |  |  |  |  |  |  |  |  |  |  |  |  |  |  |  |  |  |  |  |  |  |  |  |  |  |  |  |  |  |  |  |  |  |  |  |  |  |  |  |  |  |  |  |  |  |  |  |  |  |  |  |  |  |  |  |  |  |  |  |  |  |  |  |  |  |  |  |  |  |  |  |  |  |  |  |  |  |  |  |  |  |  |  |  |  |  |  |  |  |  |  |  |  |  |  |  |  |  |  |  |  |  |  |  |  |  |  |  |  |  |  |  |  |  |  |  |  |  |  |  |  |  |  |  |  |  |  |  |  |  |  |  |  |  |  |  |  |  |  |  |  |  |  |  |  |  |  |  |  |  |  |  |  |  |  |  |  |  |  |  |  |  |  |  |  |  |  |  |  |  |  |  |  |  |  |  |  |  |  |  |  |  |  |  |  |  |  |  |  |  |  |  |  |  |  |  |  |  |  |  |  |  |  |  |  |  |  |  |  |  |  |  |  |  |  |  |  |  |  |  |  |  |  |  |  |  |  |  |  |  |  |  |  |  |  |  |  |  |  |  |  |  |  |  |  |  |  |  |  |  |  |  |  |  |  |  |  |  |  |  |  |  |  |  |  |  |  |  |  |  |  |  |  |  |  |  |  |  |  |  |  |  |  |  |  |  |  |  |  |  |  |  |  |  |  |  |  |  |  |  |  |  |  |  |  |  |  |  |  |  |  |  |  |  |  |  |  |  |  |  |  |  |  |  |  |  |  |  |  |  |  |  |  |  |  |  |  |  |  |  |  |  |  |  |  |  |  |  |  |  |  |  |  |  |  |  |  |  |  |  |  |  |  |  |  |  |  |  |  |  |  |  |  |  |  |  |  |  |  |  |  |  |  |  |  |  |  |  |  |  |  |  |  |  |  |  |  |  |  |  |  |  |  |  |  |  |  |  |  |  |  |  |  |  |  |  |  |  |  |  |  |  |  |  |  |  |  |  |  |  |  |  |  |  |  |  |  |  |  |  |  |  |  |  |  |  |  |  |  |  |  |  |  |  |  |  |  |  |  |  |  |  |  |  |  |  |  |  |  |  |  |  |  |  |  |  |  |  |  |  |  |  |  |  |  |  |  |  |  |  |  |  |  |  |  |  |  |  |  |  |  |  |  |  |  |  |  |  |  |  |  |  |  |  |  |  |  |  |  |  |  |  |  |  |  |  |  |  |  |  |  |  |  |  |  |  |  |  |  |  |  |  |  |  |  |  |  |  |  |  |  |  |  |  |  |  |  |  |  |  |  |  |  |  |  |  |  |  |  |  |  |  |  |  |  |  |  |  |  |  |  |  |  |  |  |  |  |  |  |  |  |  |  |  |  |  |  |  |  |  |  |  |  |  |  |  |  |  |  |  |  |  |  |  |  |  |  |  |  |  |  |  |  |  |  |  |  |  |  |  |  |  |  |  |  |  |  |  |  |  |  |  |  |  |  |  |  |  |  |  |  |  |  |  |  |  |  |  |  |  |  |  |  |  |  |  |  |  |  |  |  |  |  |  |  |  |  |  |  |  |  |  |  |  |  |  |  |  |  |  |  |  |  |  |  |  |  |  |  |  |  |  |  |  |  |  |  |  |  |  |  |  |  |  |  |  |  |  |  |  |  |  |  |  |  |  |  |  |  |  |  |  |  |  |  |  |  |  |  |  |  |  |  |  |  |  |  |  |  |  |  |  |  |  |  |  |  |  |  |  |  |  |  |  |  |  |  |  |  |  |  |  |  |  |  |  |  |  |  |  |  |  |  |  |  |  |  |  |  |  |  |  |  |  |  |  |  |  |  |  |  |  |  |  |  |  |  |  |  |  |  |  |  |  |  |  |  |  |  |  |  |  |  |  |  |  |  |  |  |  |  |  |  |  |  |  |  |  |  |  |  |  |  |  |  |  |  |  |  |  |  |  |  |  |  |  |  |  |  |  |  |  |  |  |  |  |  |  |  |  |  |  |  |  |  |  |  |  |  |  |  |  |  |  |  |  |  |  |  |  |  |  |  |  |  |  |  |  |  |  |  |  |  |  |  |  |  |  |  |  |  |  |  |  |  |  |  |  |  |  |  |  |  |  |  |  |  |  |  |  |  |  |  |  |  |  |  |  |  |  |  |  |  |  |  |  |  |  |  |  |  |  |  |  |  |  |  |  |  |  |  |  |  |  |  |  |  |  |  |  |  |  |  |  |  |  |  |  |  |  |  |  |  |  |  |  |  |  |  |  |  |  |  |  |  |  |  |  |  |  |  |  |  |  |  |  |  |  |  |  |  |  |  |  |  |  |  |  |  |  |  |  |  |  |  |  |  |  |  |  |  |  |  |  |  |  |  |  |  |  |  |  |  |  |  |  |  |  |  |  |  |  |  |  |  |  |  |  |  |  |  |  |  |  |  |  |  |  |  |  |  |  |  |  |  |  |  |  |  |  |  |  |  |  |  |  |  |  |  |  |  |  |  |  |  |  |  |  |  |  |  |  |  |  |  |  |  |  |  |  |  |  |  |  |  |  |  |  |  |  |  |  |  |  |  |  |  |  |  |  |  |  |  |  |  |  |  |  |  |  |  |  |  |  |  |  |  |  |  |  |  |  |  |  |  |  |  |  |  |  |  |  |  |  |  |  |  |  |  |  |  |  |  |  |  |  |  |  |  |  |  |  |  |  |  |  |  |  |  |  |  |  |  |  |  |  |  |  |  |  |  |  |  |  |  |  |  |  |  |  |  |  |  |  |  |  |  |  |  |  |  |  |  |  |  |  |  |  |  |  |  |  |  |  |  |  |  |  |  |  |  |  |  |  |  |  |  |  |  |  |  |  |  |  |  |  |  |  |  |  |  |  |  |  |  |  |  |  |  |  |  |  |  |  |  |  |  |  |  |  |  |  |  |  |  |  |  |  |  |  |  |  |  |  |  |  |  |  |  |
|--|--|--|--|--|--|--|--|--|--|--|--|--|--|--|--|--|--|--|--|--|--|--|--|--|--|--|--|--|--|--|--|--|--|--|--|--|--|--|--|--|--|--|--|--|--|--|--|--|--|--|--|--|--|--|--|--|--|--|--|--|--|--|--|--|--|--|--|--|--|--|--|--|--|--|--|--|--|--|--|--|--|--|--|--|--|--|--|--|--|--|--|--|--|--|--|--|--|--|--|--|--|--|--|--|--|--|--|--|--|--|--|--|--|--|--|--|--|--|--|--|--|--|--|--|--|--|--|--|--|--|--|--|--|--|--|--|--|--|--|--|--|--|--|--|--|--|--|--|--|--|--|--|--|--|--|--|--|--|--|--|--|--|--|--|--|--|--|--|--|--|--|--|--|--|--|--|--|--|--|--|--|--|--|--|--|--|--|--|--|--|--|--|--|--|--|--|--|--|--|--|--|--|--|--|--|--|--|--|--|--|--|--|--|--|--|--|--|--|--|--|--|--|--|--|--|--|--|--|--|--|--|--|--|--|--|--|--|--|--|--|--|--|--|--|--|--|--|--|--|--|--|--|--|--|--|--|--|--|--|--|--|--|--|--|--|--|--|--|--|--|--|--|--|--|--|--|--|--|--|--|--|--|--|--|--|--|--|--|--|--|--|--|--|--|--|--|--|--|--|--|--|--|--|--|--|--|--|--|--|--|--|--|--|--|--|--|--|--|--|--|--|--|--|--|--|--|--|--|--|--|--|--|--|--|--|--|--|--|--|--|--|--|--|--|--|--|--|--|--|--|--|--|--|--|--|--|--|--|--|--|--|--|--|--|--|--|--|--|--|--|--|--|--|--|--|--|--|--|--|--|--|--|--|--|--|--|--|--|--|--|--|--|--|--|--|--|--|--|--|--|--|--|--|--|--|--|--|--|--|--|--|--|--|--|--|--|--|--|--|--|--|--|--|--|--|--|--|--|--|--|--|--|--|--|--|--|--|--|--|--|--|--|--|--|--|--|--|--|--|--|--|--|--|--|--|--|--|--|--|--|--|--|--|--|--|--|--|--|--|--|--|--|--|--|--|--|--|--|--|--|--|--|--|--|--|--|--|--|--|--|--|--|--|--|--|--|--|--|--|--|--|--|--|--|--|--|--|--|--|--|--|--|--|--|--|--|--|--|--|--|--|--|--|--|--|--|--|--|--|--|--|--|--|--|--|--|--|--|--|--|--|--|--|--|--|--|--|--|--|--|--|--|--|--|--|--|--|--|--|--|--|--|--|--|--|--|--|--|--|--|--|--|--|--|--|--|--|--|--|--|--|--|--|--|--|--|--|--|--|--|--|--|--|--|--|--|--|--|--|--|--|--|--|--|--|--|--|--|--|--|--|--|--|--|--|--|--|--|--|--|--|--|--|--|--|--|--|--|--|--|--|--|--|--|--|--|--|--|--|--|--|--|--|--|--|--|--|--|--|--|--|--|--|--|--|--|--|--|--|--|--|--|--|--|--|--|--|--|--|--|--|--|--|--|--|--|--|--|--|--|--|--|--|--|--|--|--|--|--|--|--|--|--|--|--|--|--|--|--|--|--|--|--|--|--|--|--|--|--|--|--|--|--|--|--|--|--|--|--|--|--|--|--|--|--|--|--|--|--|--|--|--|--|--|--|--|--|--|--|--|--|--|--|--|--|--|--|--|--|--|--|--|--|--|--|--|--|--|--|--|--|--|--|--|--|--|--|--|--|--|--|--|--|--|--|--|--|--|--|--|--|--|--|--|--|--|--|--|--|--|--|--|--|--|--|--|--|--|--|--|--|--|--|--|--|--|--|--|--|--|--|--|--|--|--|--|--|--|--|--|--|--|--|--|--|--|--|--|--|--|--|--|--|--|--|--|--|--|--|--|--|--|--|--|--|--|--|--|--|--|--|--|--|--|--|--|--|--|--|--|--|--|--|--|--|--|--|--|--|--|--|--|--|--|--|--|--|--|--|--|--|--|--|--|--|--|--|--|--|--|--|--|--|--|--|--|--|--|--|--|--|--|--|--|--|--|--|--|--|--|--|--|--|--|--|--|--|--|--|--|--|--|--|--|--|--|--|--|--|--|--|--|--|--|--|--|--|--|--|--|--|--|--|--|--|--|--|--|--|--|--|--|--|--|--|--|--|--|--|--|--|--|--|--|--|--|--|--|--|--|--|--|--|--|--|--|--|--|--|--|--|--|--|--|--|--|--|--|--|--|--|--|--|--|--|--|--|--|--|--|--|--|--|--|--|--|--|--|--|--|--|--|--|--|--|--|--|--|--|--|--|--|--|--|--|--|--|--|--|--|--|--|--|--|--|--|--|--|--|--|--|--|--|--|--|--|--|--|--|--|--|--|--|--|--|--|--|--|--|--|--|--|--|--|--|--|--|--|--|--|--|--|--|--|--|--|--|--|--|--|--|--|--|--|--|--|--|--|--|--|--|--|--|--|--|--|--|--|--|--|--|--|--|--|--|--|--|--|--|--|--|--|--|--|--|--|--|--|--|--|--|--|--|--|--|--|--|--|--|--|--|--|--|--|--|--|--|--|--|--|--|--|--|--|--|--|--|--|--|--|--|--|--|--|--|--|--|--|--|--|--|--|--|--|--|--|--|--|--|--|--|--|--|--|--|--|--|--|--|--|--|--|--|--|--|--|--|--|--|--|--|--|--|--|--|--|--|--|--|--|--|--|--|--|--|--|--|--|--|--|--|--|--|--|--|--|--|--|--|--|--|--|--|--|--|--|--|--|--|--|--|--|--|--|--|--|--|--|--|--|--|--|--|--|--|--|--|--|--|--|--|--|--|--|--|--|--|--|--|--|--|--|--|--|--|--|--|--|--|--|--|--|--|--|--|--|--|--|--|--|--|--|--|--|--|--|--|--|--|--|--|--|--|--|--|--|--|--|--|--|--|--|--|--|--|--|--|--|--|--|--|--|--|--|--|--|--|--|--|--|--|--|--|--|--|--|--|--|--|--|--|--|--|--|--|--|--|--|--|--|--|--|--|--|--|--|--|--|--|--|--|--|--|--|--|--|--|--|--|--|--|--|--|--|--|--|--|--|--|--|--|--|--|--|--|--|--|--|--|--|--|--|--|