

FINISHES

Paints:

NB: All paints to be Envir02 Low Sheen (low VOC) unless otherwise specified.

P1 Dulux - White Watsonia - PW2D4 (Aquamamel - Semi Gloss White)

P2 Dulux - White Watsonia - PW2D4 (Envir02 - Low Sheen White)

P3 Dulux - Golden Banner - P15H9 (Envir02 - Low Sheen Yellow)

Laminates:

L1 WHITE - ABET Laminati - 406 Sei or similar as agreed by designer

L2 YELLOW - ABET Laminati - 468 Sei
Alternative:
Laminex - Olympia Yellow, Flint Finish - 378

L3 GREY - Wilsonart slate grey - 9160 or equivalent.

L4 Satan Aluminium - ABET Laminati - 730 Morbida or similar as agreed by designer

Tiles:

T1 White - Classic Ceramic, Vogue, 5x5 - In Latte

T2 Yellow - Classic Ceramic, Trasparenze, 5x5 - Tr Cedro

T3 Grey - Classic Ceramic, Trasparenze, 5x5 - TR Perla

Resin Surfaces

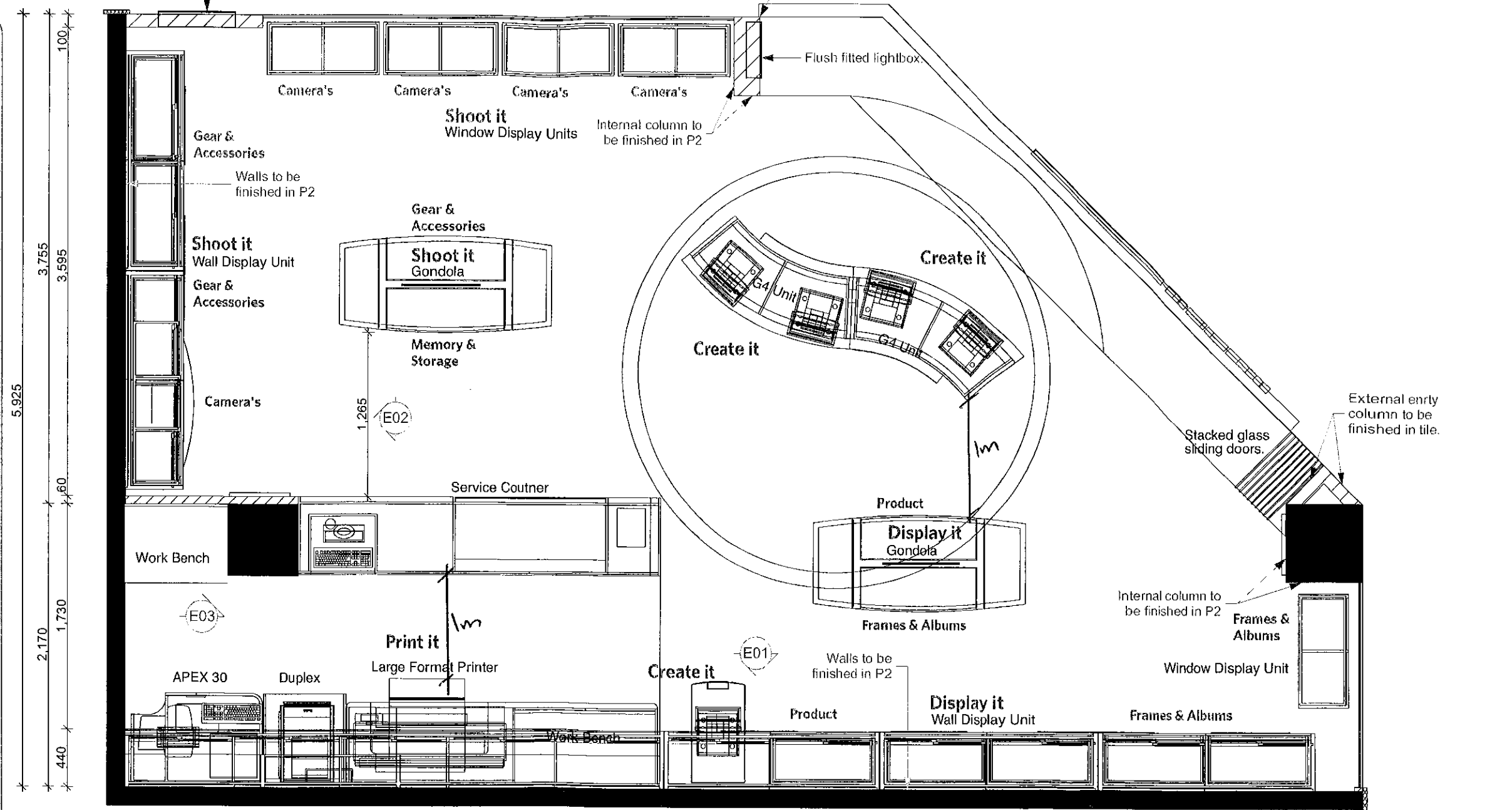
H1 Opaic White - LG Himac acrylic

Perforated metal sheet finished in powder coat Yellow Gold 33617 gloss

NOTE: All joinery to be finished in laminated MDF E0 or E1 grade unless otherwise specified.

100mm High MDF skirting finished in P1 to all tenancy walls.

Brushed Aluminium diminishing strip to floor changes.



IMPLYING DEVELOPMENT
CERTIFICATE No.

09/2365-1

MCKENZIE GROUP
CONSULTING (NSW) PTY. LTD.
A.C.N. 093 211 995

Figured dimensions are to be followed in preference to dimensions from drawings. All dimensions and levels to be checked on site by contractors and said dimensions are to be their responsibility. Drawing errors and omissions to be reported to We Are Human for clarification. All materials, finishes, and building must be as specified. Any amendments must be approved in writing by We Are Human Pty Ltd. Perspectives are intended to provide an overview of the concept, they are not intended for construction purposes. This drawing is the copyright of We Are Human Pty Ltd. - Copyright is reserved by them. This drawing is issued on condition that it is not copied or disclosed by or to any unauthorised persons without prior consent in writing from We Are Human Pty Ltd.

Rev.	Description:	Int.	Date	Drawing: GA Plan	Designer: CDM
				Project Name: Leading Edge Group - Kodak Express Balgowlah Kodak Express Digital Solutions Balgowlah, N.S.W	Scale: 1:50 A4
				We Are Human, 3/75 Hardware Lane, Melbourne, Victoria, Australia. ABN: 46 124 557 722	Project No: s059_09 Construction Issue
				m. +61 (0) 430 129 123 e. curtis@wahdesign.com.au w. www.wahdesign.com.au	Sheet No: 1.01
					Date: 19/05/2009

we human.
design, engage, inspire

CEILING & LIGHTING SCHEDULE

NOTES:

ALL FITTINGS ARE TO CORRESPOND TO THE FOLLOWING AND BE OF A HIGH COMMERCIAL QUALITY AND CARRY A MINIMUM 12 MONTHS WARRANTY

Emergency lighting and Exit lighting to be in accordance with Building Reg's and AS 2293

Fire Alarms and Smoke detectors to be in accordance with Australian Standards.

Sprinkler system to be in accordance with Australian Standards

All detectors and sprinklers to match ceiling finish unless specified.

All LV's to be on electronic transformers.

All general lighting must comply with AS 1680

All electrical work must comply with AS 3000

Ceiling to be finished in P1

C.H.3000mm Ceiling height indicator

⊗ 50W LV Recessed Gimble Down Light. Satin Chrome Finish mod: AL1038 www.ambience-lighting.com.au

⊗ 35W LV Recessed Gimble Down Light. Satin Chrome Finish mod: AL1038 www.ambience-lighting.com.au

Ⓢ Low Energy Downlight, 2x18w. White finish - mod: TG185 www.ambience-lighting.com.au

⌞ 1x 600 long 35W Fluorescent daylight tube.

ⓔ Emergency light

EXIT Illuminated ceiling mounted edge lit glass Exit light

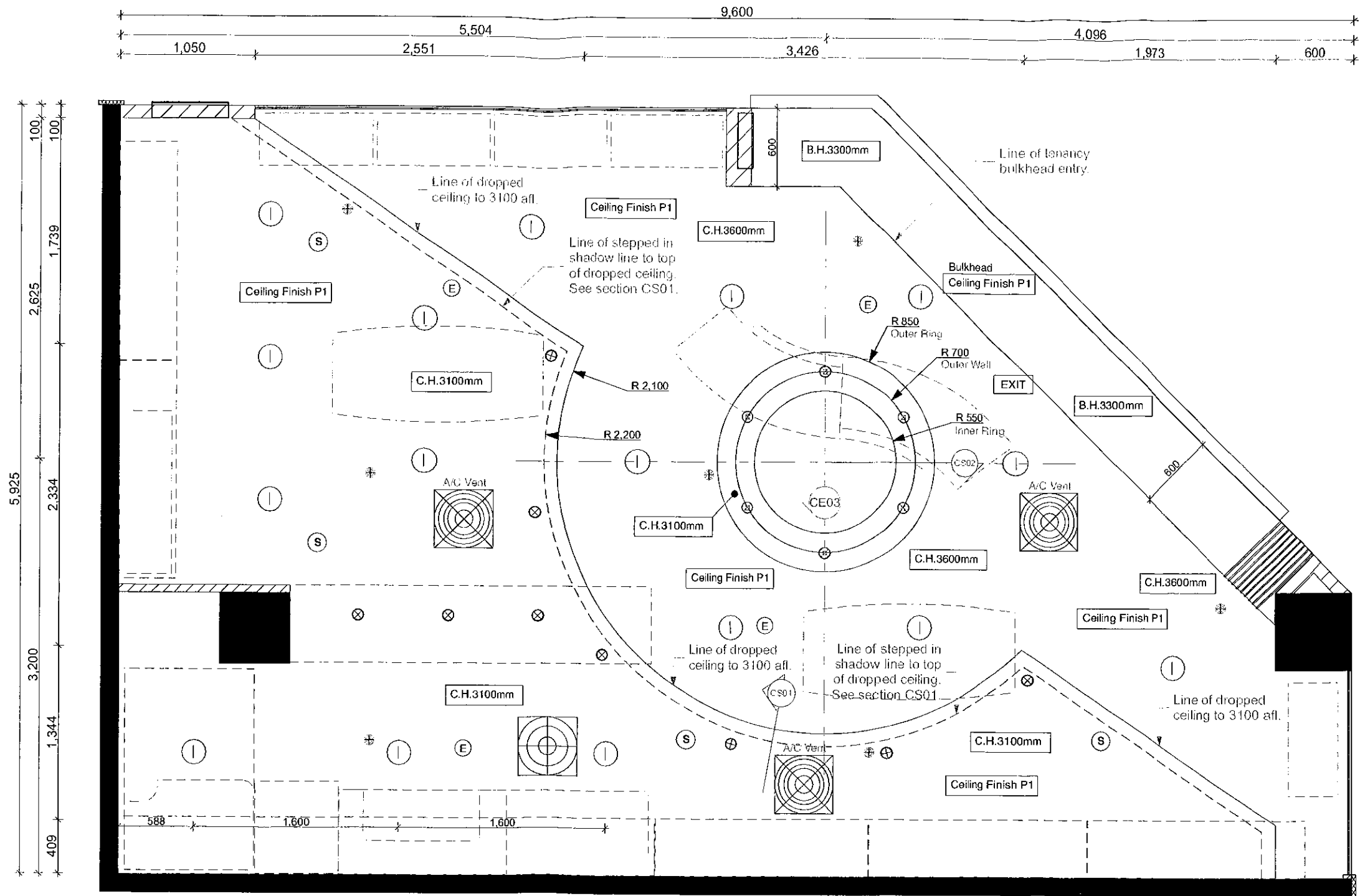
Ⓢ Ceiling Speaker.

⊙ Smoke detectors

⊕ Fire Sprinkler Head

⊗ Supply Air - Round air conditioning vents too match ceiling colour.

⊗ Return Air - Round air conditioning vents too match ceiling colour.



COMPLYING DEVELOPMENT
CERTIFICATE No.

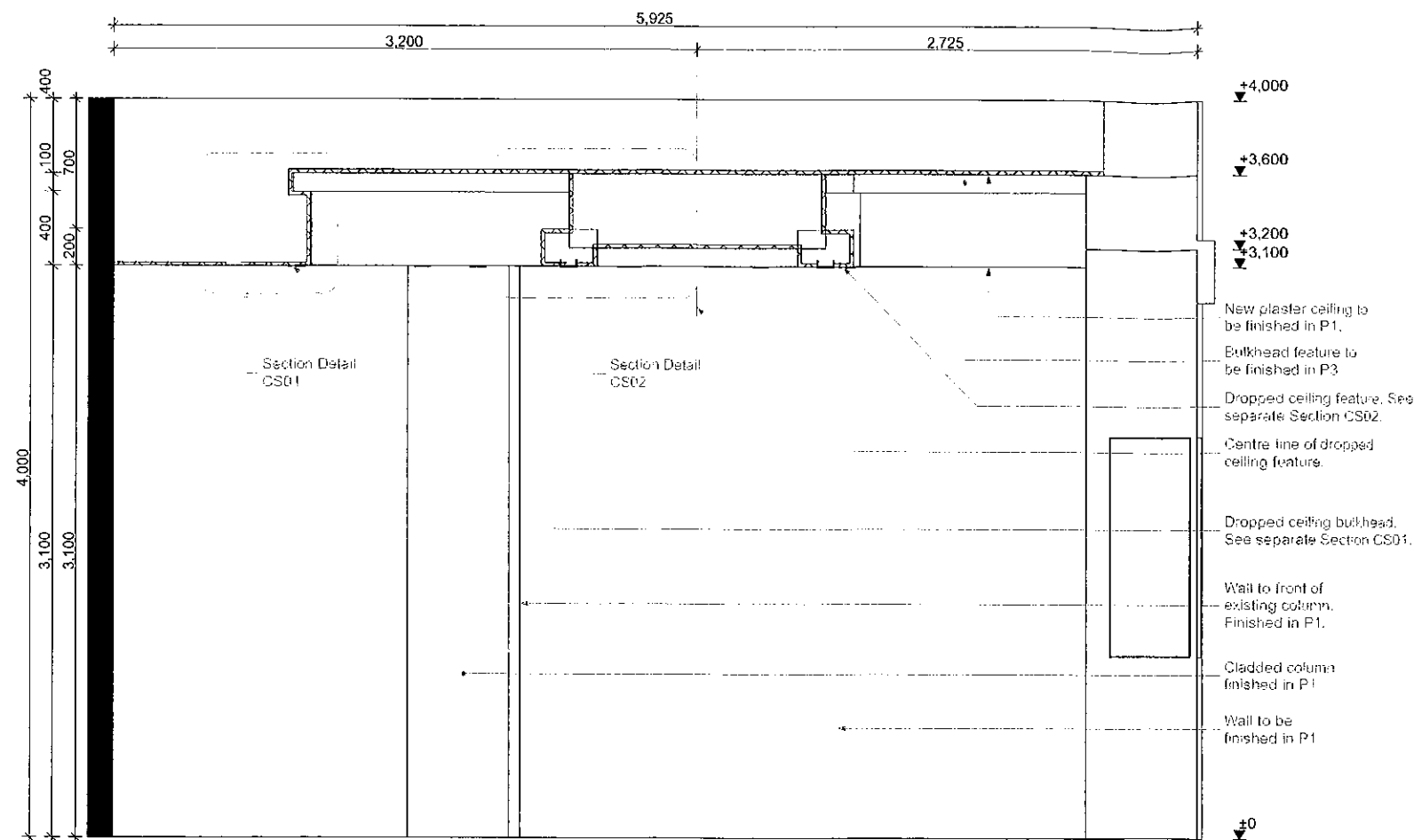
09/2365-1

MCKENZIE GROUP
CONSULTING (NSW) PTY. LTD.
A.C.N. 093 211 995

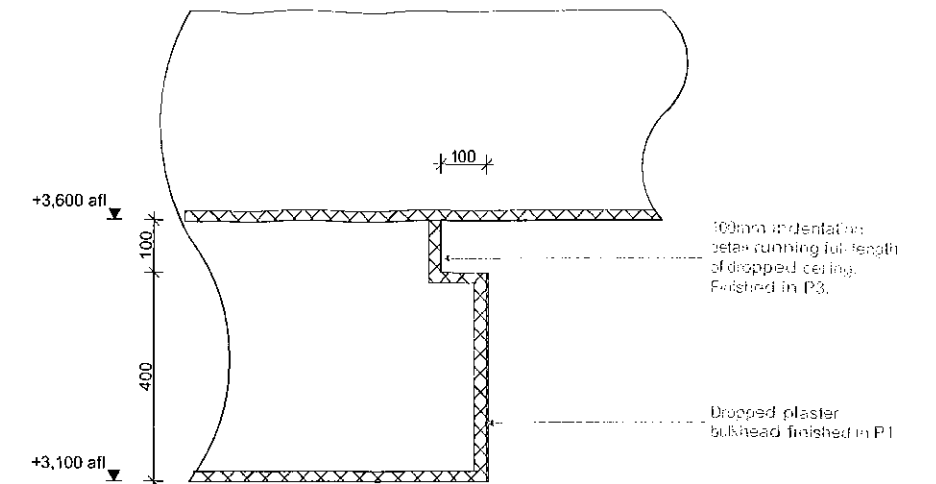
Figured dimensions are to be followed in preference to dimensions from drawings. All dimensions and levels to be checked on site by contractors and said dimensions are to be their responsibility. Drawing errors and omissions to be reported to We Are Human for clarification. All materials, finishes, and building must be as specified. Any amendments must be approved in writing by We Are Human Pty Ltd. Perspectives are intended to provide an overview of the concept, they are not intended for construction purposes. This drawing is the copyright of We Are Human Pty Ltd. - Copyright is reserved by them. This drawing is issued on condition that it is not copied or disclosed by or to any unauthorised persons without prior consent in writing from We Are Human Pty Ltd.

Rev.	Description:	Int.	Date	Drawing: Ceiling & Lighting	Designer: CDM
				Project Name: Leading Edge Group - Kodak Express Balgowlah Kodak Express Digital Solutions Balgowlah, N.S.W	Scale: 1:50 A4
				We Are Human, 3/75 Hardware Lane, Melbourne, Victoria, Australia. ABN: 46 124 557 722	Project No: s059_09 Construction Issue
				m. +61 (0) 430 129 123 e. curtis@wahdesign.com.au w. www.wahdesign.com.au	Sheet No: 1.04
					Date: 19/05/2009

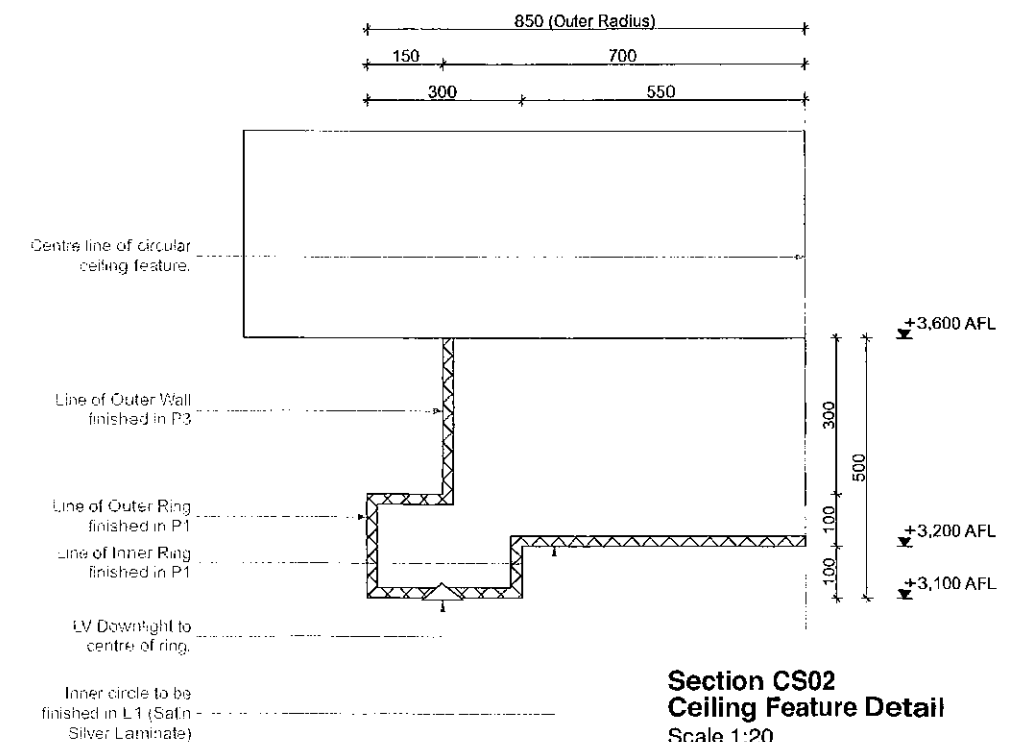
we human.
design, engage, inspire



**Elevation CE03
Ceiling Section**
Scale 1:50



**Section CS01
Dropped Ceiling Detail**
Scale 1:20



**Section CS02
Ceiling Feature Detail**
Scale 1:20

COMPLYING DEVELOPMENT
CERTIFICATE No.

09/2365-1

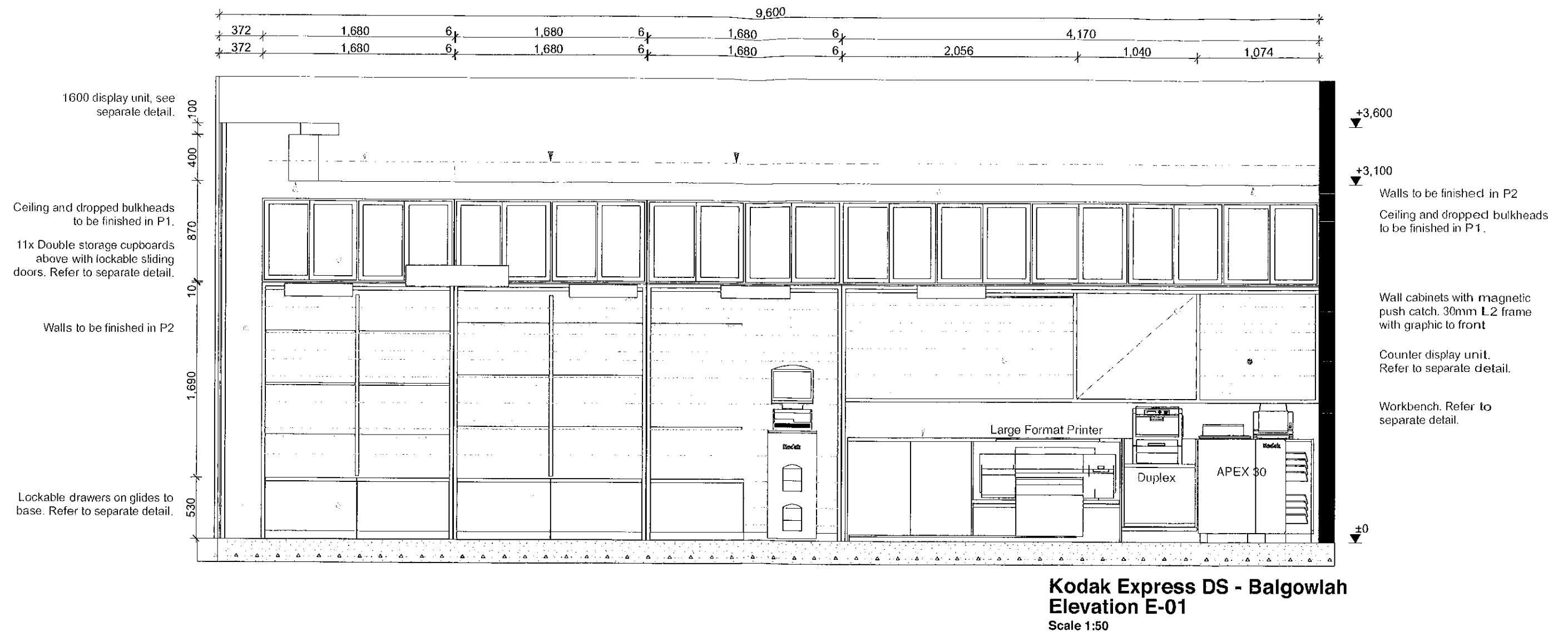
McKENZIE GROUP
CONSULTING (NSW) PTY. LTD.
A.C.N. 093 211 995

Figured dimensions are to be followed in preference to dimensions from drawings. All dimensions and levels to be checked on site by contractors and said dimensions are to be their responsibility. Drawing errors and omissions to be reported to We Are Human for clarification. All materials, finishes, and building must be as specified. Any amendments must be approved in writing by We Are Human Pty Ltd. Perspectives are intended to provide an overview of the concept, they are not intended for construction purposes. This drawing is the copyright of We Are Human Pty Ltd. - Copyright is reserved by them. This drawing is issued on condition that it is not copied or disclosed by or to any unauthorised persons without prior consent in writing from We Are Human Pty Ltd.

Rev.	Description:	Int.	Date	Drawing: Ceiling Elevations & Details
				Project Name: Leading Edge Group - Kodak Express Balgowlah Kodak Express Digital Solutions Balgowlah, N.S.W
				We Are Human, 3/75 Hardware Lane, Melbourne, Victoria, Australia. ABN: 46 124 557 722
				M. +61 (0) 430 129 123 E. curtis@wahdesign.com.au W. www.wahdesign.com.au

Designer:	CDM
Scale:	1:50, 1:20 A4
Project No:	s059_09
Construction Issue	
Sheet No:	1.05
Date:	19/05/2009

we are human.
design, engage, inspire



COMPLYING DEVELOPMENT
 CERTIFICATE No.

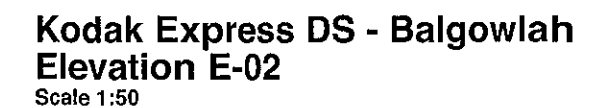
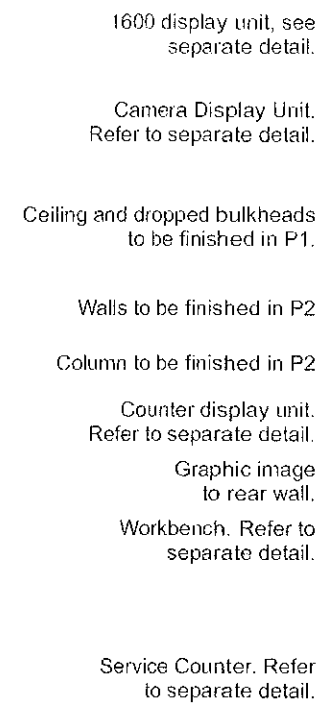
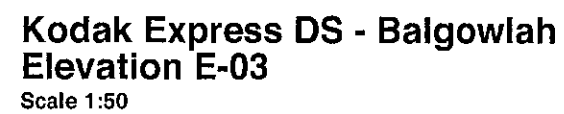
09/2365-1

MCKENZIE GROUP
 CONSULTING (NSW) PTY. LTD.
 A.C.N. 093 211 933

Figured dimensions are to be followed in preference to dimensions from drawings. All dimensions and levels to be checked on site by contractors and said dimensions are to be their responsibility. Drawing errors and omissions to be reported to We Are Human for clarification. All materials, finishes, and building must be as specified. Any amendments must be approved in writing by We Are Human Pty Ltd. Perspectives are intended to provide an overview of the concept, they are not intended for construction purposes. This drawing is the copyright of We Are Human Pty Ltd. - Copyright is reserved by them. This drawing is issued on condition that it is not copied or disclosed by or to any unauthorised persons without prior consent in writing from We Are Human Pty Ltd.

Rev.	Description:	Int.	Date	Drawing: Internal Elevations	Designer: CDM
				Project Name: Leading Edge Group - Kodak Express Balgowlah Kodak Express Digital Solutions Balgowlah, N.S.W	Scale: 1:50 A4
				We Are Human, 3/75 Hardware Lane, Melbourne, Victoria, Australia. ABN: 46 124 557 722	Project No: s059_09 Construction Issue
				m. +61 (0) 430 129 123 e. curtis@wahdesign.com.au w. www.wahdesign.com.au	Sheet No: 1.06
					Date: 19/05/2009

we are human.
 design, engage, inspire



MCKENZIE GROUP
CONSULTING (NSW) PTY. LTD.
A.O.N. 093 211 995

we are human.
design, engage, inspire

Inter-tenancy wall to be finished with a 200mm stainless steel end cap by lessor.

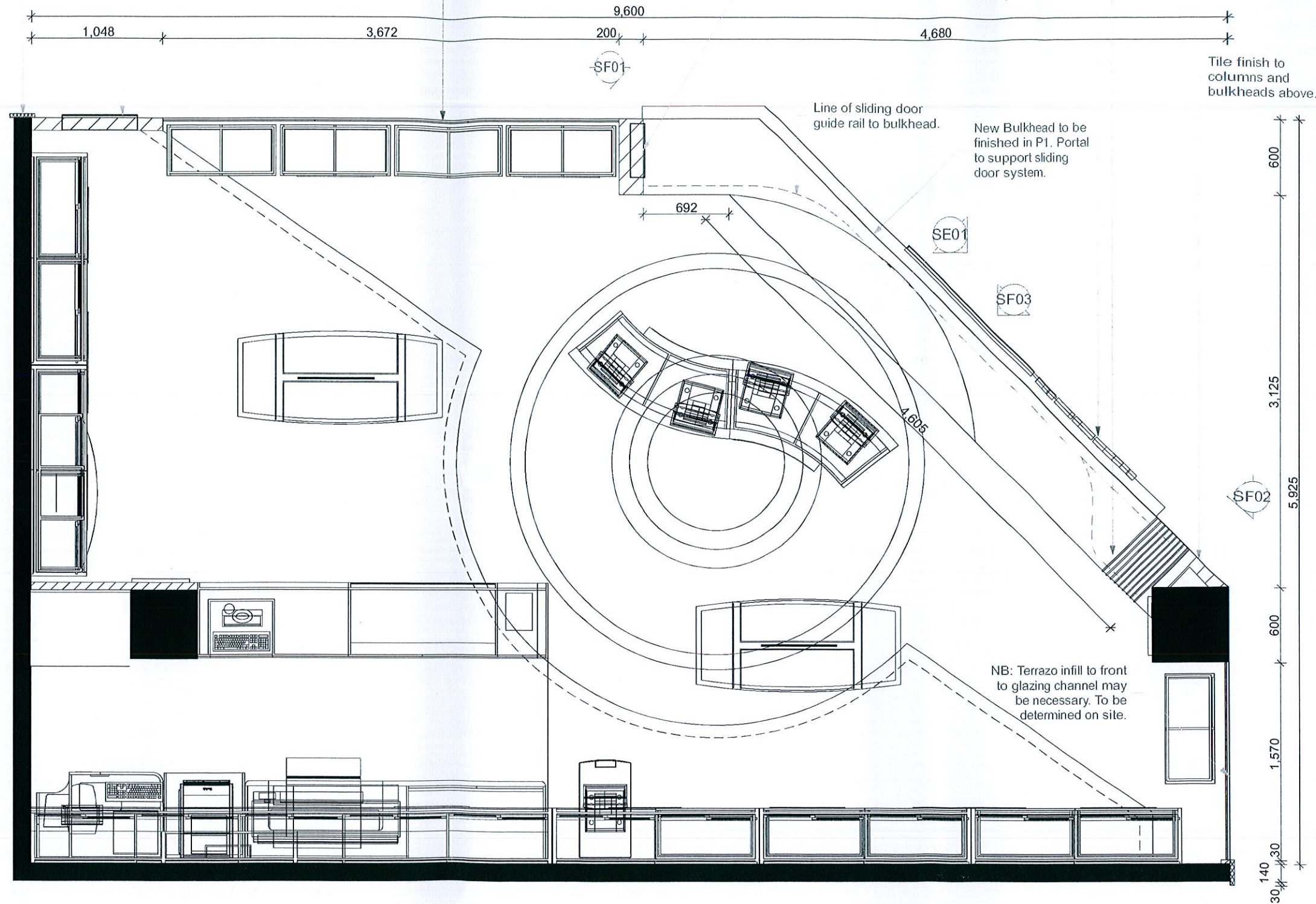
A1 light box with feature graphic.

Shop front glazing to AS1288. To be recessed into floor, ceiling and tenancy wall glazing channels.

Light box with feature graphic.

Shopfront signage, Foamex lettering with rear illumination. Refer to separate detail.

Translucent vinyl mosaic pattern to match shopfront treatment to rear of sliding glass doors.



COMPLYING DEVELOPMENT
CERTIFICATE No.

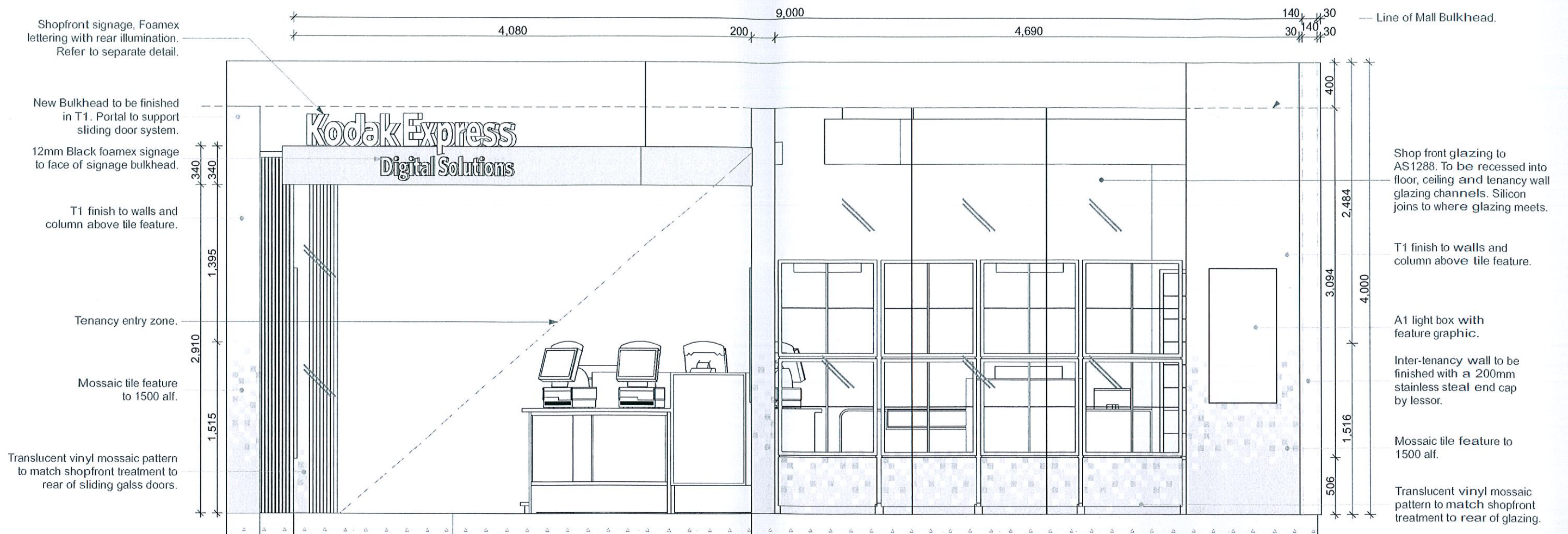
09/2365-1

MCKENZIE GROUP
CONSULTING (NSW) PTY LTD.
A.C.N. 093 211 995

wearehuman.
design, engage, inspire

Figured dimensions are to be followed in preference to dimensions from drawings. All dimensions and levels to be checked on site by contractors and said dimensions are to be their responsibility. Drawing errors and omissions to be reported to We Are Human for clarification. All materials, finishes, and building must be as specified. Any amendments must be approved in writing by We Are Human Pty Ltd. Perspectives are intended to provide an overview of the concept, they are not intended for construction purposes. This drawing is the copyright of We Are Human Pty Ltd. - Copyright is reserved by them. This drawing is issued on condition that it is not copied or disclosed by or to any unauthorised persons without prior consent in writing from We Are Human Pty Ltd.

Rev.	Description:	Int.	Date	Drawing: Shopfront Details	Designer: CDM
				Project Name: Leading Edge Group - Kodak Express Balgowlah Kodak Express Digital Solutions Balgowlah, N.S.W	Scale: 1:50 A4
				We Are Human, 3/75 Hardware Lane, Melbourne, Victoria, Australia. ABN: 46 124 557 722	Project No: s059_09 Construction Issue
				m. +61 (0) 430 129 123 e. curtis@wahdesign.com.au w. www.wahdesign.com.au	Sheet No: 1.08
					Date: 19/05/2009



Kodak Express DS - Balgowlah
Shop Front Elevation SF-01
 Scale 1:50

COMPLYING DEVELOPMENT
 CERTIFICATE No.

09/2365-1

McKENZIE GROUP
 CONSULTING (NSW) PTY. LTD.
 A.C.N. 093 211 995

Figured dimensions are to be followed in preference to dimensions from drawings. All dimensions and levels to be checked on site by contractors and said dimensions are to be their responsibility. Drawing errors and omissions to be reported to We Are Human for clarification. All materials, finishes, and building must be as specified. Any amendments must be approved in writing by We Are Human Pty Ltd. Perspectives are intended to provide an overview of the concept, they are not intended for construction purposes. This drawing is the copyright of We Are Human Pty Ltd. - Copyright is reserved by them. This drawing is issued on condition that it is not copied or disclosed by or to any unauthorised persons without prior consent in writing from We Are Human Pty Ltd.

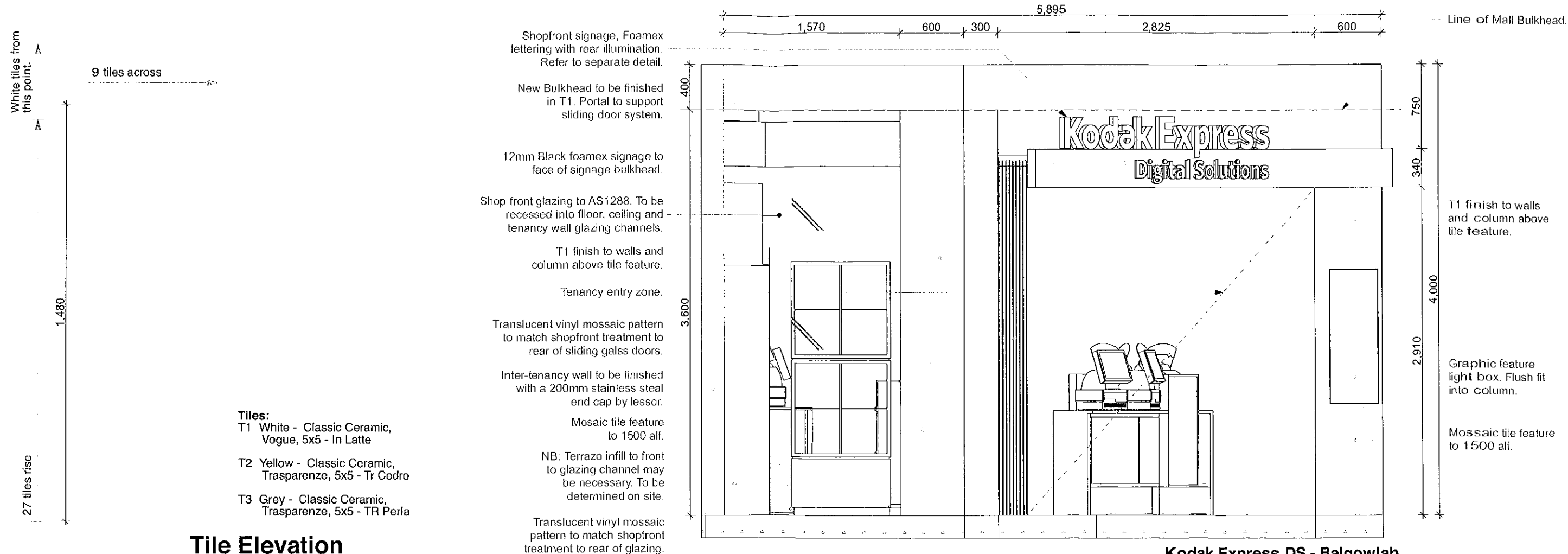
Rev.	Description:	Int.	Date

Drawing: Shopfront Elevations
Project Name: Leading Edge Group - Kodak Express Balgowlah Kodak Express Digital Solutions Balgowlah, N.S.W
We Are Human, 3/75 Hardware Lane, Melbourne, Victoria, Australia. ABN: 46 124 557 722

m. +61 (0) 430 129 123 e. curtis@wahdesign.com.au w. www.wahdesign.com.au

Designer: CDM
Scale: 1:50 A4
Project No: s059_09
Construction Issue
Sheet No: 1.09
Date: 19/05/2009

wearehuman.
 design, engage, inspire



Tile Elevation
Tile Repetition Pattern
Scale 1:20

Kodak Express DS - Balgowlah
Shop Front Elevation SF-02
Scale 1:50

COMPLYING DEVELOPMENT
CERTIFICATE No.

09/2365-1

MCKENZIE GROUP
CONSULTING (NSW) PTY. LTD.
A.C.N. 095 211 995

Figured dimensions are to be followed in preference to dimensions from drawings. All dimensions and levels to be checked on site by contractors and said dimensions are to be their responsibility. Drawing errors and omissions to be reported to We Are Human for clarification. All materials, finishes, and building must be as specified. Any amendments must be approved in writing by We Are Human Pty Ltd. Perspectives are intended to provide an overview of the concept, they are not intended for construction purposes. This drawing is the copyright of We Are Human Pty Ltd. - Copyright is reserved by them. This drawing is issued on condition that it is not copied or disclosed by or to any unauthorised persons without prior consent in writing from We Are Human Pty Ltd.	Rev.	Description:	Int.	Date	Drawing: Shopfront Elevations 02	Designer: CDM
	01	Terrazzo detail added.	CDM	19/05/09	Project Name: Leading Edge Group - Kodak Express Balgowlah Kodak Express Digital Solutions Balgowlah, N.S.W	Scale: 1:50, 1:20 A4
					We Are Human, 3/75 Hardware Lane, Melbourne, Victoria, Australia. ABN: 46 124 557 722	Project No: s059_09 Construction Issue
					m. +61 (0) 430 129 123 e. curtis@wahdesign.com.au w. www.wahdesign.com.au	Sheet No: 1.10
						Date: 19/05/2009

we are human.
design, engage, inspire

Shopfront signage, Foamex lettering with rear illumination. Refer to separate detail.

New Bulkhead to be finished in T1. Portal to support sliding door system.

12mm Black foamex signage to face of signage bulkhead.

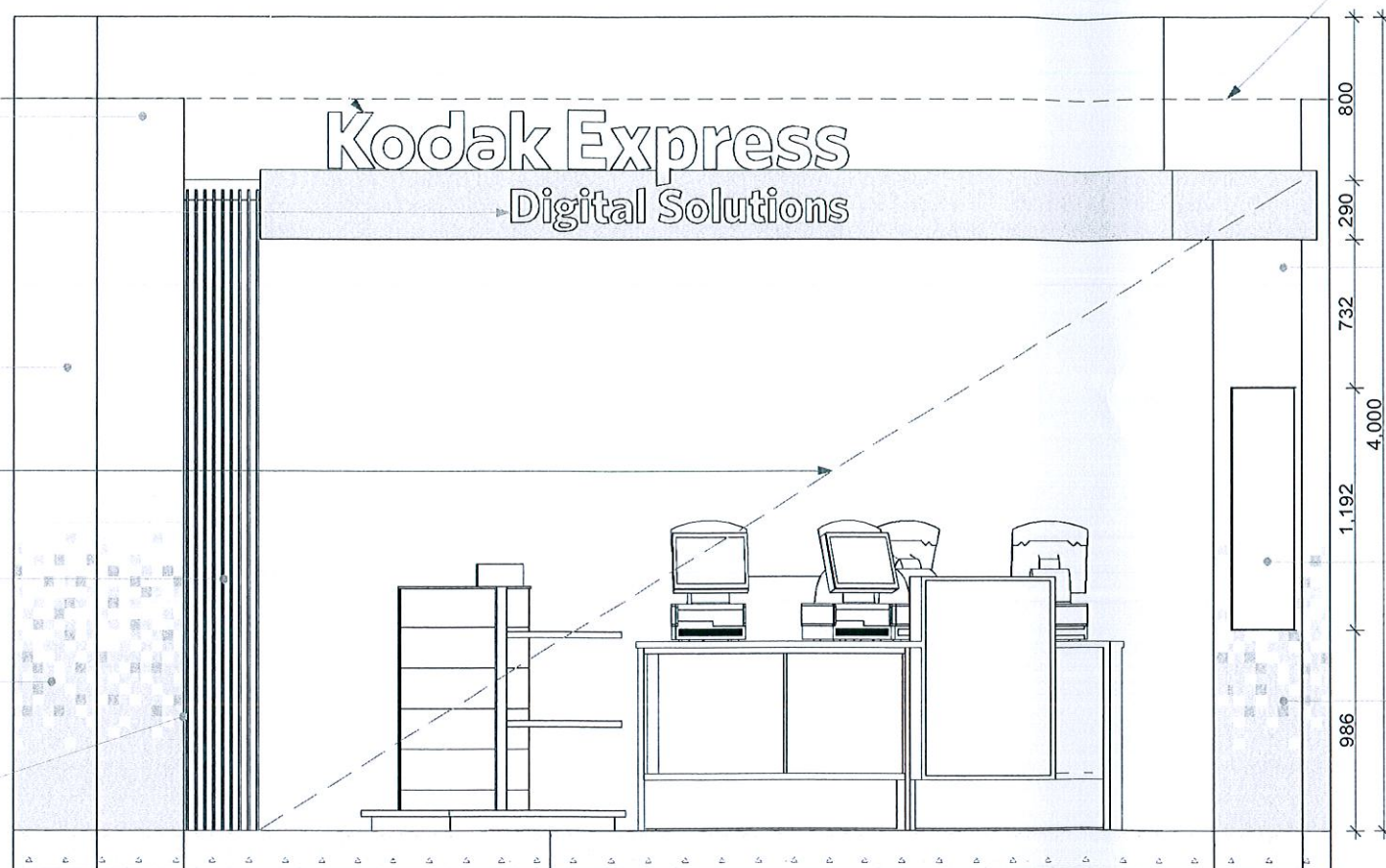
T1 finish to walls and column above tile feature.

Tenancy entry zone.

Translucent vinyl mosaic pattern to match shopfront treatment to rear of sliding glass doors.

Mosaic tile feature to 1500 alf.

Same tile treatment to column face behind sliding glass doors



Kodak Express DS - Balgowlah
Shop Front Elevation SF-03
Scale 1:50

Line of Mall Bulkhead.

T1 finish to walls and column above tile feature.

Graphic feature light box

Mosaic tile feature to 1500 alf.

Steel support beam by lessor.

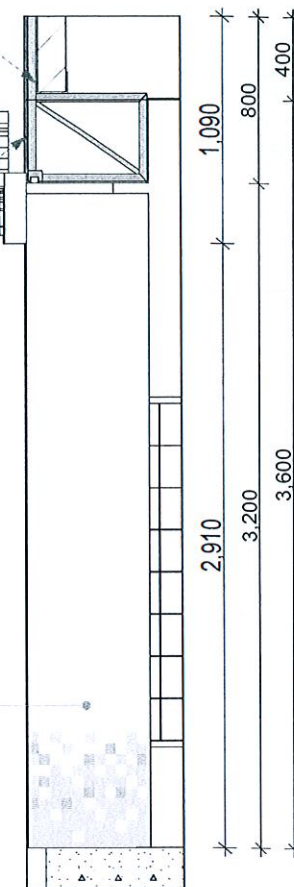
+3,600

Line of Mall Bulkhead.

Sliding door rail to be supported off portal structure and must not apply any more than 1000kg per lineal metre to the existing steel beam.

Shopfront signage, Foamex lettering with rear illumination. Refer to separate detail.

Translucent vinyl mosaic pattern to match shopfront treatment to rear of sliding glass doors.



Kodak Express DS - Balgowlah
Shop Front Section SE01
Scale 1:50

COMPLYING DEVELOPMENT
CERTIFICATE No.

09/2365-1

MCKENZIE GROUP
CONSULTING (NSW) PTY LTD.
A.C.N. 093 211 885

Figured dimensions are to be followed in preference to dimensions from drawings. All dimensions and levels to be checked on site by contractors and said dimensions are to be their responsibility. Drawing errors and omissions to be reported to We Are Human for clarification. All materials, finishes, and building must be as specified. Any amendments must be approved in writing by We Are Human Pty Ltd. Perspectives are intended to provide an overview of the concept, they are not intended for construction purposes. This drawing is the copyright of We Are Human Pty Ltd. - Copyright is reserved by them. This drawing is issued on condition that it is not copied or disclosed by or to any unauthorised persons without prior consent in writing from We Are Human Pty Ltd.

Rev.	Description:	Int.	Date

Drawing: Shopfront Elevations 03

Project Name:

Leading Edge Group - Kodak Express Balgowlah
Kodak Express Digital Solutions Balgowlah, N.S.W

We Are Human, 3/75 Hardware Lane, Melbourne, Victoria, Australia.
ABN: 46 124 557 722

m. +61 (0) 430 129 123
e. curtis@wahdesign.com.au
w. www.wahdesign.com.au

Designer: CDM

Scale: 1:50 A4

Project No: s059_09
Construction Issue

Sheet No: 1.11

Date: 19/05/2009

wearehuman.
design, engage, inspire



DISPLAYING DEVELOPMENT
CERTIFICATE No.

09/2365-1

McKENZIE GROUP
CONSULTING (NSW) PTY. LTD.
A.C.N. 093 211 995

Figured dimensions are to be followed in preference to dimensions from drawings. All dimensions and levels to be checked on site by contractors and said dimensions are to be their responsibility. Drawing errors and omissions to be reported to We Are Human for clarification. All materials, finishes, and building must be as specified. Any amendments must be approved in writing by We Are Human pty ltd. Perspectives are intended to provide an overview of the concept, they are not intended for construction purposes. This drawing is the copyright of We Are Human pty ltd. - Copyright is reserved by them. This drawing is issued on condition that it is not copied or disclosed by or to any unauthorised persons without prior consent in writing from We Are Human pty ltd.

Rev.	Description:	Int.	Date	Drawing: Renderings 01	Designer: CDM
				Project Name: Leading Edge Group - Kodak Express Balgowlah Kodak Express Digital Solutions Balgowlah, N.S.W	Scale: A4
				We Are Human, 3/75 Hardware Lane, Melbourne, Victoria, Australia. ABN: 46 124 557 722	Project No: s059_09 Construction Issue
				m. +61 (0) 430 129 123 e. curtis@wahdesign.com.au w. www.wahdesign.com.au	Sheet No: 1.12
					Date: 19/05/2009

we human.
design, engage, inspire



COMPLYING DEVELOPMENT
CERTIFICATE No.

09/2365-1

McKENZIE GROUP
CONSULTING (NSW) PTY. LTD.
A.C.N. 093 211 995

Figured dimensions are to be followed in preference to dimensions from drawings. All dimensions and levels to be checked on site by contractors and said dimensions are to be their responsibility. Drawing errors and omissions to be reported to We Are Human for clarification. All materials, finishes, and building must be as specified. Any amendments must be approved in writing by We Are Human pty ltd. Perspectives are intended to provide an overview of the concept, they are not intended for construction purposes. This drawing is the copyright of We Are Human pty ltd. - Copyright is reserved by them. This drawing is issued on condition that it is not copied or disclosed by or to any unauthorised persons without prior consent in writing from We Are Human pty ltd.

Rev.	Description:	Int.	Date	Drawing: Renderings 03	Designer: CDM
				Project Name: Leading Edge Group - Kodak Express Balgowlah Kodak Express Digital Solutions Balgowlah, N.S.W	Scale: A4
				We Are Human, 3/75 Hardware Lane, Melbourne, Victoria, Australia. ABN: 46 124 557 722	Project No: s059_09 Construction Issue
				m. +61 (0) 430 129 123 e. curtis@wahdesign.com.au w. www.wahdesign.com.au	Sheet No: 1.14
					Date: 19/05/2009

we are human.
design, engage, inspire



COMPLYING DEVELOPMENT
CERTIFICATE No.

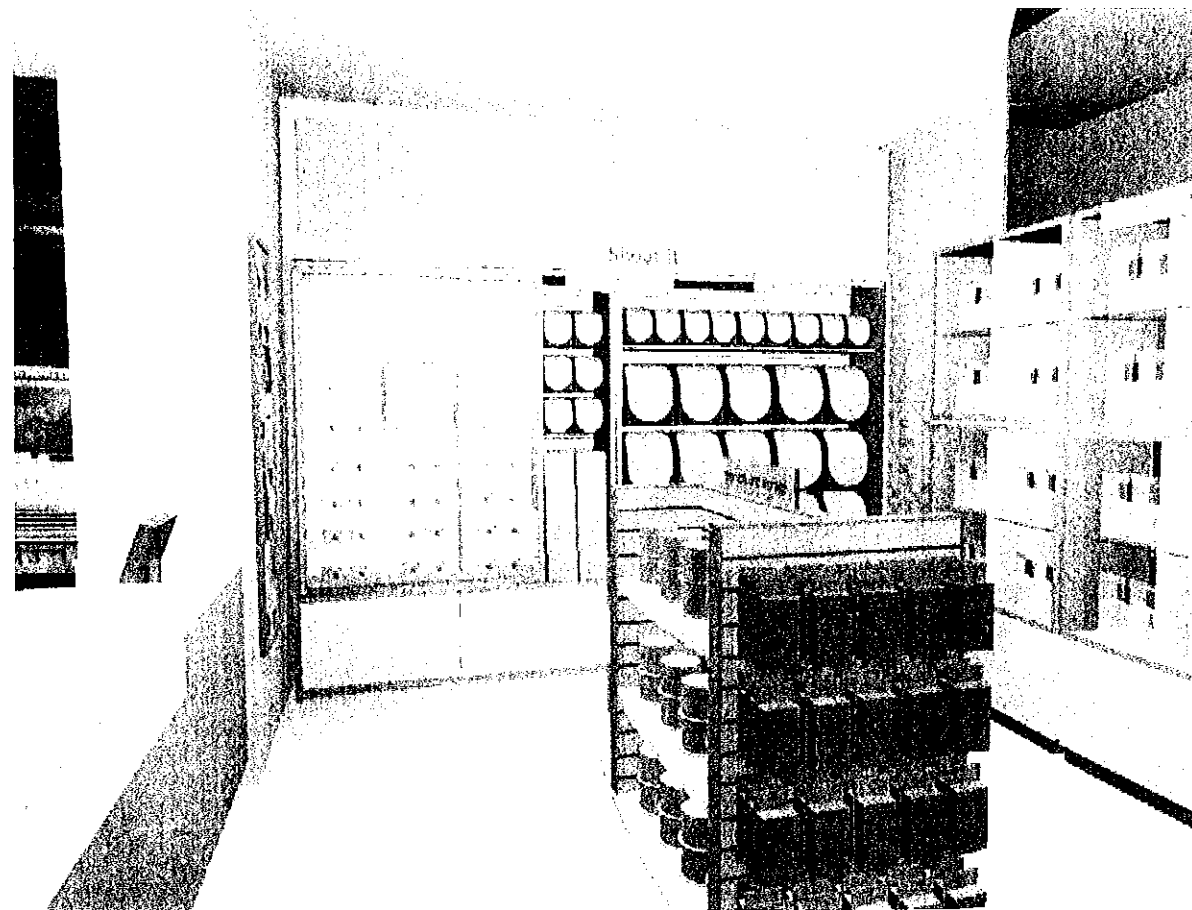
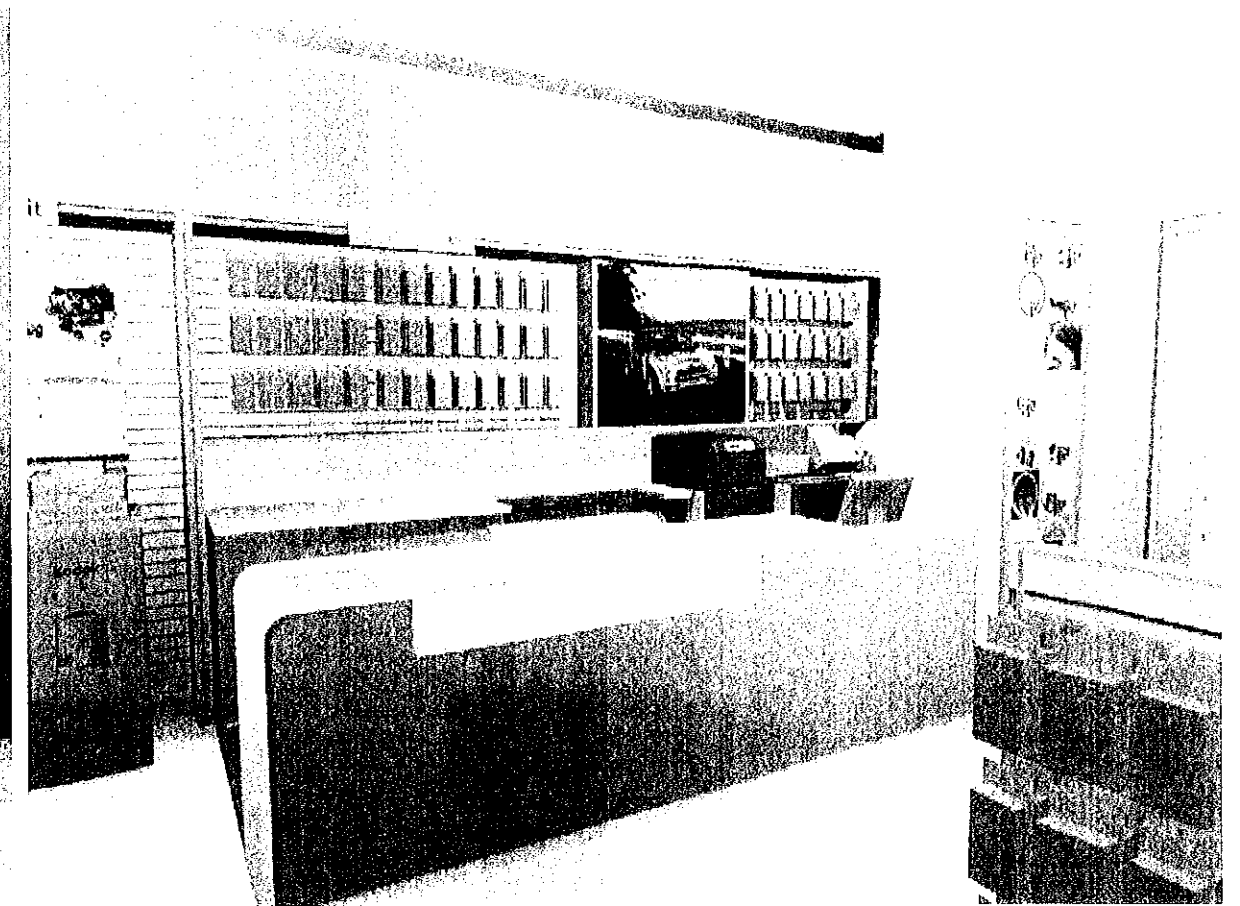
09/2365-1

McKENZIE GROUP
CONSULTING (NSW) PTY. LTD.
A.C.N. 093 211 995

Figured dimensions are to be followed in preference to dimensions from drawings. All dimensions and levels to be checked on site by contractors and said dimensions are to be their responsibility. Drawing errors and omissions to be reported to We Are Human for clarification. All materials, finishes, and building must be as specified. Any amendments must be approved in writing by We Are Human pty ltd. Perspectives are intended to provide an overview of the concept, they are not intended for construction purposes. This drawing is the copyright of We Are Human pty ltd. - Copyright is reserved by them. This drawing is issued on condition that it is not copied or disclosed by or to any unauthorised persons without prior consent in writing from We Are Human pty ltd.

Rev.	Description:	Int.	Date	Drawing: Renderings 04	Designer: CDM
				Project Name: Leading Edge Group - Kodak Express Balgowlah Kodak Express Digital Solutions Balgowlah, N.S.W	Scale: A4
					Project No: s059_09
					Construction Issue
				We Are Human, 3/75 Hardware Lane, Melbourne, Victoria, Australia. ABN: 46 124 557 722	Sheet No: 1.15
				m. +61 (0) 430 129 123 e. curtis@wahdesign.com.au w. www.wahdesign.com.au	Date: 19/05/2009

we are human.
design, engage, inspire



Figured dimensions are to be followed in preference to dimensions from drawings. All dimensions and levels to be checked on site by contractors and said dimensions are to be their responsibility. Drawing errors and omissions to be reported to We Are Human for clarification. All materials, finishes, and building must be as specified. Any amendments must be approved in writing by We Are Human pty ltd. Perspectives are intended to provide an overview of the concept, they are not intended for construction purposes. This drawing is the copyright of We Are Human pty ltd. - Copyright is reserved by them. This drawing is issued on condition that it is not copied or disclosed by or to any unauthorised persons without prior consent in writing from We Are Human pty ltd.

Rev.	Description:	Int.	Date	Drawing: Renderings 05	Designer: CDM
				Project Name: Leading Edge Group - Kodak Express Balgowlah Kodak Express Digital Solutions Balgowlah, N.S.W	Scale: A4
				We Are Human, 3/75 Hardware Lane, Melbourne, Victoria, Australia. ABN: 46 124 557 722	Project No: s059_09 Construction Issue
				m. +61 (0) 430 129 123 e. curtis@wahdesign.com.au w. www.wahdesign.com.au	Sheet No: 1.16
					Date: 19/05/2009

we are human.
design, engage, inspire