

figured dimensions take precedence over scaled drawings | contractors to check and verify all levels datum and dimensions on site | all materials and workmanship to be in accordance with current written manufacturers instructions local regulations and SAA codes | conflicting information to be brought to notice of the architect and clarification sought before proceeding with any works | all drawings are not for construction and are subject to further design development, consultant input, council and legislative requirements.

fittings & finishes			
BDRY	boundary	b	basin
BOE	brick on edge	b/head	bulkhead
BPB	bagged painted brickwork	ca	cavity sliding door
CCR	colorbond corrugated roof sheeting	ch	dryer
CF	colorbond face compressed fibre cement	ch	dishwasher
CFC	concrete	ch	exhaust fan
CONC	concrete	ch	feeder
CJ	control joint	ch	floor waste
CT	ceramic tile	ch	hollow core door
CPT	carpet	ch	handrail
DP	downpipe	ch	letterbox
DP&S	downpipe & spreader	ch	mirror
EG	existing ground line	ch	microwave
EMB	electrical meterboard	ch	overhead
F1	finish 1	ch	pantry
F2	finish 2	ch	ref
F3	finish 3	ch	refrigerator
F4	finish 4	ch	rangehood
F5	finish 5	ch	solid core door
FB	face brick	ch	soap holder
FC	fibre cement	ch	stainless steel sink
FGL	finished ground line	ch	stove
F	fixed glass	ch	shower
FGL	finished ground line	ch	shower
GM	gas meter	ch	shower
HWS	hot water service	ch	shower
HG	half-round gutter	ch	shower
PB	plasterboard	ch	shower
SC	solder courses	ch	shower
TFB	timber floor boards	ch	shower
WM	water meter	ch	shower

Key	
	existing tree to be removed
	existing tree to be retained
	indicative location of proposed new tree refer to landscape documents for further detail

04/08/17	j	issue for S96
26/07/17	i	issue for S96
02/08/15	h	issue for DA
24/08/15	g	landscaping/fence updated
17/08/15	f	final issue for coordination
06/08/15	e	tree/landscaping amendments
01/07/15	d	indicative existing parking
01/07/15	c	maintenance workshop relocated
26/06/15	b	issue for pre DA
11/06/15	a	issue for co ordination
date	issue	amendment

site plan
pacific lodge aged care
the salvation army aged care plus,
COLLAROY

project reference: SAL12066
drawn: JC | SN | SL
checked: ST | AE | JC
scale: 1:500, 1:1000 @ a2

preliminary not for construction

integratedDESIGNgroup
architects bathurst | sydney

bathurst
02 6332 6206 t
02 6332 6216 f
bathurst@idgarchitects.com.au e

sydney
02 9764 6100 t
02 9764 6111 f
sydney@idgarchitects.com.au e

copyright
integratedDESIGNgroup p/l
abn 21 995 789 058

nominated architects
tony mcduffy reg. no. 5273
simon thorne reg. no. 7093

figured dimensions take precedence over scaled drawings | contractors to check and verify all levels datum and dimensions on site | all materials and workmanship to be in accordance with current written manufacturers instructions local regulations and SAA codes | conflicting information to be brought to notice of the architect and clarification sought before proceeding with any works | all drawings are not for construction and are subject to further design development, consultant input, council and legislative requirements.

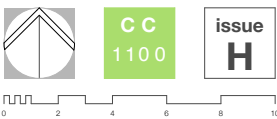
legend			
finishes & fixtures			
BDRY	boundary	b	basin
BOE	brick on edge	b/head	bulkhead
BRF	brickwork	ca	cavity sliding door
CCR	colorbond corrugated roof sheeting	ch	dryer
CF	colorbond face	ch	dishwasher
CFC	compressed fibre cement	ch	exhaust fan
CONC	concrete	ch	feeder
CJ	control joint	ch	floor waste
CT	ceramic tile	ch	hollow core door
CPT	carpet	ch	handrail
DP	downpipe	ch	letterbox
DPAS	downpipe & spreader	ch	mirror
EG	existing ground line	ch	microwave
EMB	electrical meterboard	ch	overhead
F1	finish 1	ch	pantry
F2	finish 2	ch	refrigerator
F3	finish 3	ch	solid core door
F4	finish 4	ch	soap holder
F5	finish 5	ch	stainless steel sink
FB	face brick	ch	stove
FC	fibre cement	ch	shower
FF	finished floor level	ch	shower
FG	fixed glass	ch	shower
FGL	finished ground line	ch	shower
GM	gas meter	ch	shower
HWS	hot water service	ch	shower
HG	half round gutter	ch	shower
PS	plasterboard	ch	shower
SC	solder courses	ch	shower
TFB	timber floor boards	ch	shower
WM	water meter	ch	shower

date	issue	amendment
04/08/17	h	issue for S96
28/07/17	g	issue for S96
02/09/15	f	issue for DA
24/08/15	e	landscaping/fence updated
17/08/15	d	final issue for coordination
24/07/15	c	issue for co ordination
26/06/15	b	issue for pre DA
12/06/15	a	issue for co ordination

ground floor plan

pacific lodge aged care
the salvation army aged care plus,
COLLAROY

project reference: SAL12066
drawn: JC | SN | SL
checked: ST | AE | JC
scale: 1:200 @ a2



figured dimensions take precedence over scaled drawings | contractors to check and verify all levels datum and dimensions on site | all materials and workmanship to be in accordance with current written manufacturers instructions local regulations and SAA codes | conflicting information to be brought to notice of the architect and clarification sought before proceeding with any works | all drawings are not for construction and are subject to further design development, consultant input, council and legislative requirements.

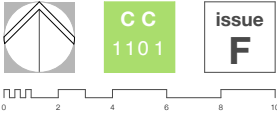
legend			
finishes & fixtures			
BDRY	boundary	b	basin
BOE	brick on edge	b/head	bulkhead
BFB	bagged painted brickwork	ca	cavity sliding door
CB	colorbond	ch	dryer
CCR	colorbond corrugated roof sheeting	ch	dishwasher
CF	colorbond facade	ch	exhaust fan
CFC	compressed fibre cement	ch	feeder
CONC	concrete	ch	floor waste
CJ	control joint	ch	hollow core door
CT	ceramic tile	ch	handrail
CPT	carpet	ch	letterbox
DP	downpipe	ch	mirror
DPAS	downpipe & spreader	ch	microwave
EGL	existing ground line	ch	overhead
EMB	electrical meterboard	ch	pantry
F1	finish 1	ch	refrigerator
F2	finish 2	ch	rangehood
F3	finish 3	ch	solid core door
F4	finish 4	ch	soap holder
F5	finish 5	ch	stainless steel sink
FB	face brick	ch	stone
FL	fibre cement	ch	shower
FLL	finished floor level	ch	shower
FGL	finished ground line	ch	shower
GM	gas meter	ch	shower
HWS	hot water service	ch	shower
HG	half-round gutter	ch	shower
PS	plasterboard	ch	shower
SC	solder course	ch	shower
TFB	timber floor boards	ch	shower
WM	water meter	ch	shower

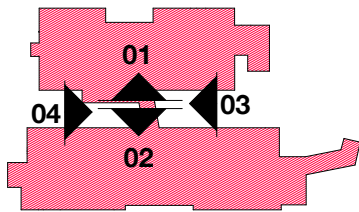


04/08/17	g	issue for S96
28/07/17	f	issue for S96
02/09/15	e	issue for DA
17/08/15	d	final issue for coordination
24/07/15	c	issue for co ordination
26/06/15	b	issue for pre DA
12/06/15	a	issue for co ordination
date	issue	amendment

first floor plan
pacific lodge aged care
the salvation army aged care plus,
COLLAROY

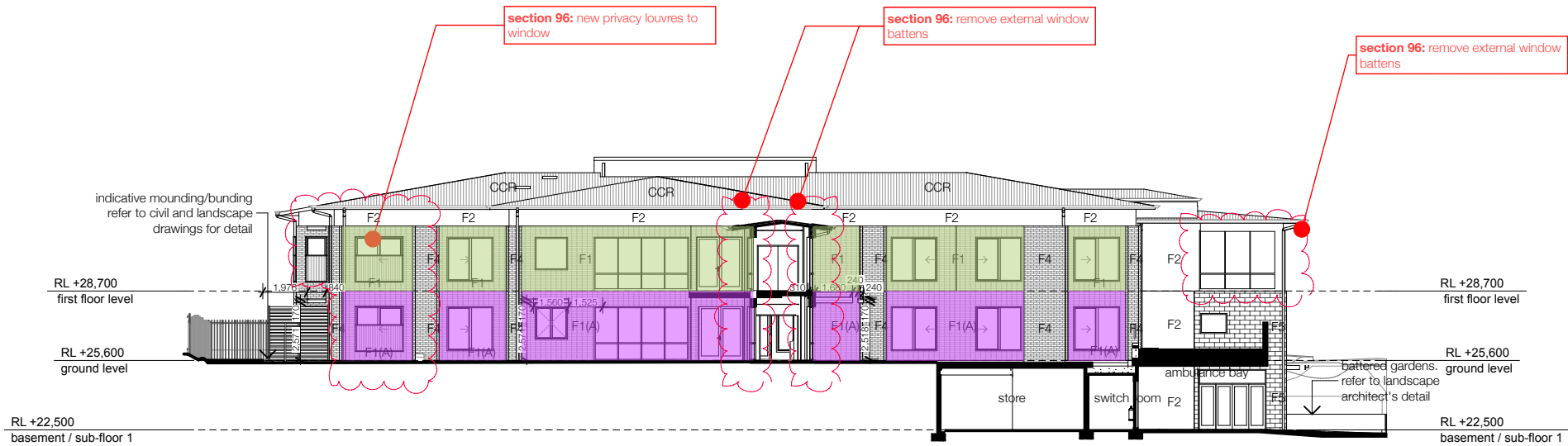
project reference: SAL12066
drawn: JC | SN | SL
checked: ST | AE | JC
scale: 1:200 @ a2



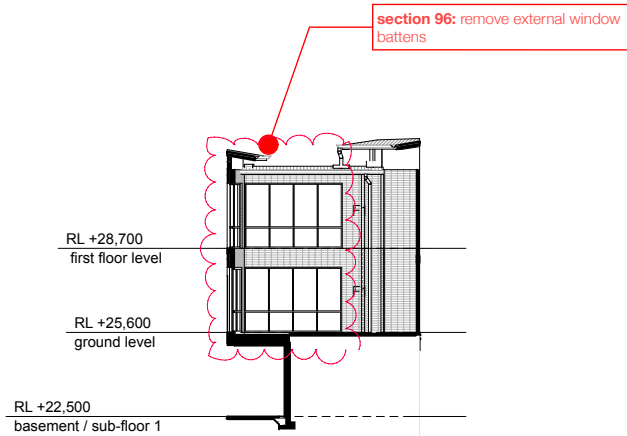


brick colour legend

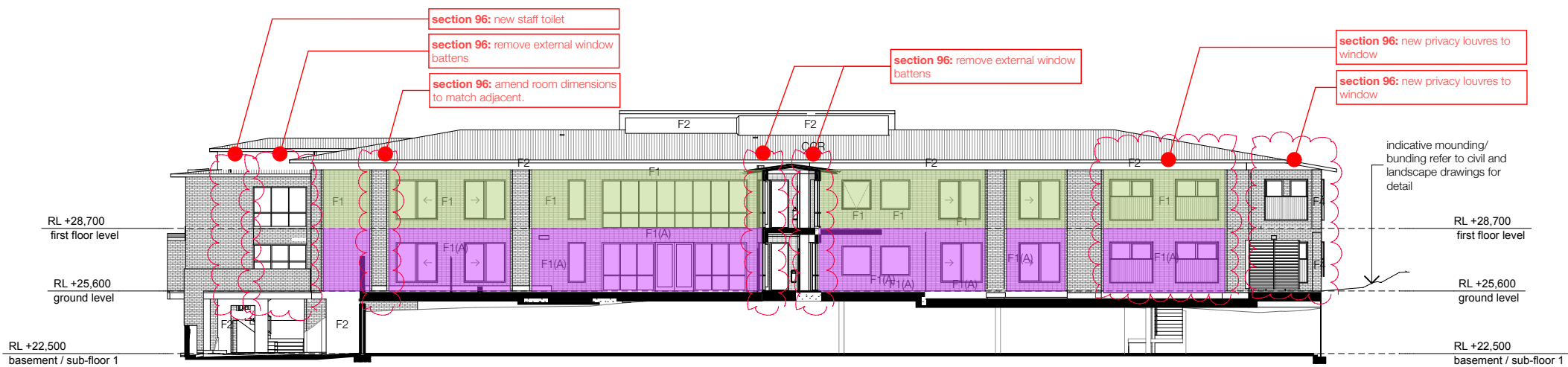
- F4 - bowral bricks - renovation gertrudis brown
- F1 - boral bricks - crevole (velour)
- F1(A) - austral - symmetry portland



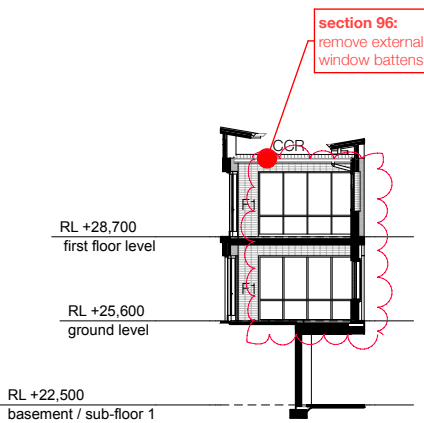
1 | courtyard north
1:200



3 | courtyard east
1:200



2 | courtyard south
1:200



4 | courtyard west
1:200

figured dimensions take precedence over scaled drawings | contractors to check and verify all levels datum and dimensions on site | all materials and workmanship to be in accordance with current written manufacturers instructions local regulations and SAA codes | conflicting information to be brought to notice of the architect and clarification sought before proceeding with any works | all drawings are not for construction and are subject to further design development, consultant input, council and legislative requirements.

legends & finishes			
BDRY	boundary	b	basin
BOE	brick on edge	b/head	bulkhead
BPF	bagged painted brickwork	ca	cavity sliding door
CCR	colorbond corrugated roof sheeting	ch	dryer
CF	colorbond facade	ch	dishwasher
CFC	compressed fibre cement	ch	exhaust fan
CONC	concrete	ch	feeder
CJ	control joint	ch	floor waste
CT	ceramic tile	ch	hollow core door
CPT	carpet	ch	handrail
DP	downpipe	ch	letterbox
DP&S	downpipe & spreader	ch	mirror
EGL	existing ground line	ch	microwave
EMB	electrical meterboard	ch	overhead
F1	finish 1	ch	pantry
F2	finish 2	ch	refrigerator
F3	finish 3	ch	rangehood
F4	finish 4	ch	solid core door
F5	finish 5	ch	soap holder
FB	face brick	ch	stainless steel sink
FC	fibre cement	ch	stove
FGL	finished ground level	ch	shower
F	fixed glass	ch	sub
FGL	finished ground line	ch	tr
GM	gas meter	ch	toilet rail
HWS	hot water service	ch	toilet role holder
HG	half-round gutter	ch	typ
PB	plasterboard	ch	typical
SC	solder courses	ch	wc
TFB	timber floor boards	ch	water closet
WM	water meter	ch	wm
		ch	washing machine
		ch	v
		ch	vent pipe
		ch	u
		ch	under bench oven
		ch	wo
		ch	water meter

04/08/17	d	issue for S96
02/08/15	c	issue for DA
17/08/15	b	issue for coordination
05/08/15	a	preliminary issue for section J
date	issue	amendment

courtyard elevations

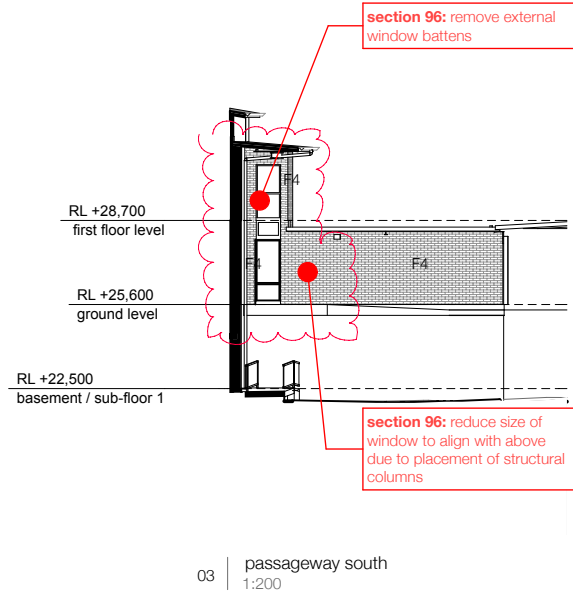
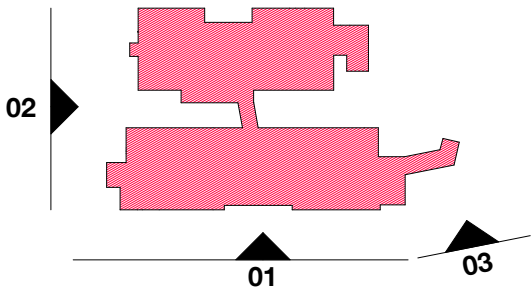
pacific lodge aged care
the salvation army aged care plus,
COLLAROY

project reference: SAL12066
drawn: JC | SN | SL
checked: ST | AE | JC
scale: 1:200, 1:1000 @ a2



figured dimensions take precedence over scaled drawings | contractors to check and verify all levels datum and dimensions on site | all materials and workmanship to be in accordance with current written manufacturers instructions local regulations and SAA codes | conflicting information to be brought to notice of the architect and clarification sought before proceeding with any works | all drawings are not for construction and are subject to further design development, consultant input, council and legislative requirements.

legends & finishes			
BDRY	boundary	b	basin
BOE	brick on edge	b/head	bulkhead
BFB	bagged painted brickwork	ca	cavity sliding door
CCR	colorbond corrugated roof sheeting	ch	dryer
CF	colorbond facade	ch	dishwasher
CFC	compressed fibre cement	ch	exhaust fan
CONC	concrete	fr	feeder
CJ	control joint	fw	floor waste
CT	ceramic tile	hc	hollow core door
CPT	carpet	hr	handrail
DP	downpipe	lb	letterbox
DPAS	downpipe & spreader	m	mirror
EG	existing ground line	mw	microwave
EMB	electrical meterboard	of	overhead
F1	finish 1	p	pantry
F2	finish 2	ref	refrigerator
F3	finish 3	rh	rangehood
F4	finish 4	sc	solid core door
F5	finish 5	sh	soap holder
FB	face brick	ss	stainless steel sink
FC	fibre cement	st	stove
FGL	finished ground line	shwr	shower
FLL	finished floor level	tr	towel rail
F	fixed glass	trh	toilet role holder
GM	gas meter	typ	typical
HWS	hot water service	wc	water closet
HG	half-round gutter	wm	washing machine
PB	plasterboard	v	vent pipe
SC	solder courses	uo	under bench oven
TFB	timber floor boards	wo	wall oven
WM	water meter		



04/08/17	d	issue for S96
02/09/15	c	issue for DA
17/08/15	b	issue for coordination
05/08/15	a	preliminary issue for section J
date	issue	amendment

south & west elevations

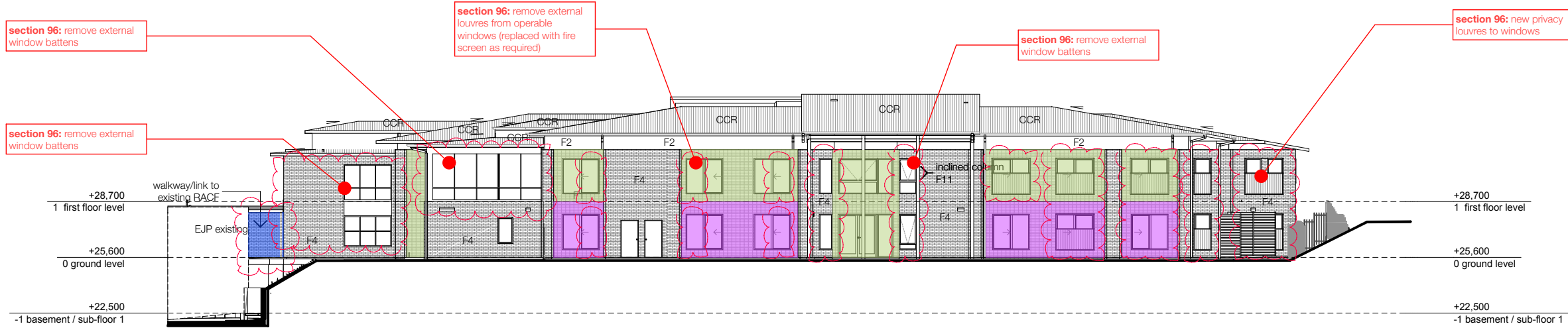
pacific lodge aged care
the salvation army aged care plus,
COLLAROY

project reference: SAL12066
drawn: JC | SN | SL
checked: ST | AE | JC
scale: 1:200, 1:1000 @ a2

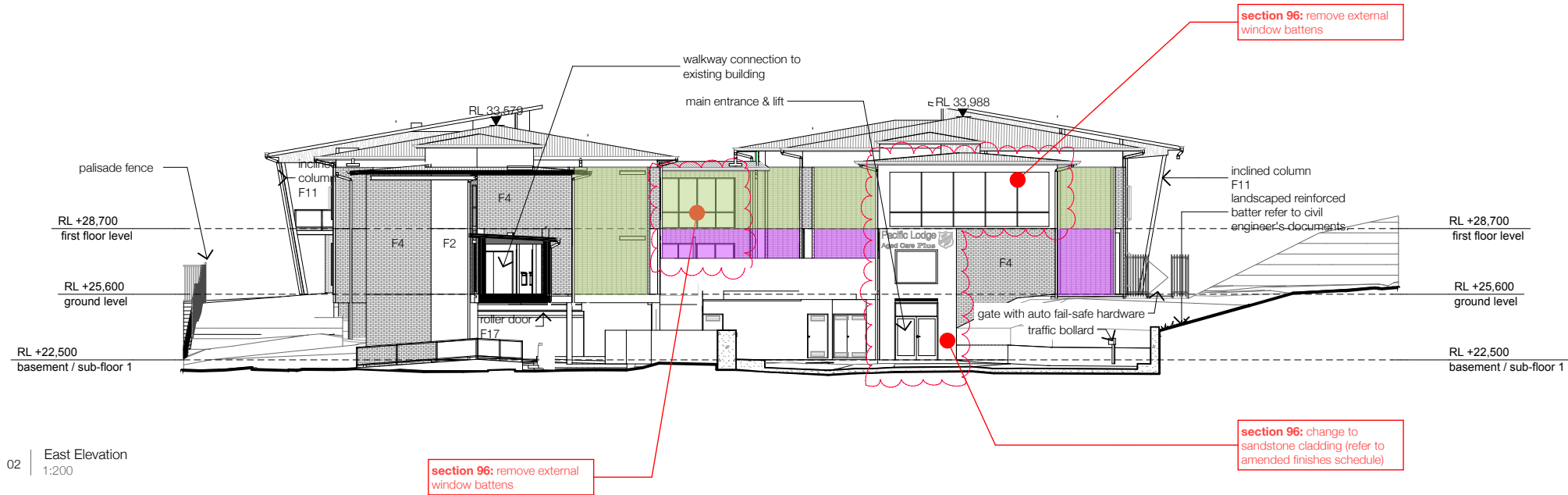


figured dimensions take precedence over scaled drawings | contractors to check and verify all levels datum and dimensions on site | all materials and workmanship to be in accordance with current written manufacturers instructions local regulations and SAA codes | conflicting information to be brought to notice of the architect and clarification sought before proceeding with any works | all drawings are not for construction and are subject to further design development, consultant input, council and legislative requirements.

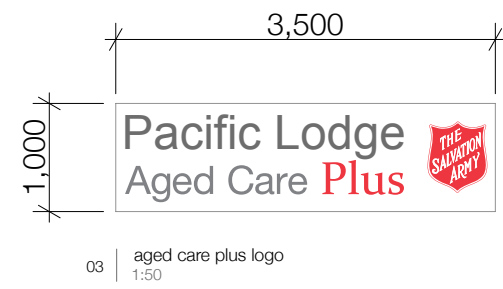
finishes & finishes			
BDRY	boundary	b	basin
BOE	brick on edge	b/head	bulkhead
BPB	bagged painted brickwork	ca	cavity sliding door
CCR	colorbond corrugated roof sheeting	ch	chiller
CF	colorbond facade	ch	chiller
CFC	compressed fibre	ch	chiller
CONC	concrete	ch	chiller
CJ	control joint	ch	chiller
CT	ceramic tile	ch	chiller
CPT	carpet	ch	chiller
DP	downpipe	ch	chiller
DP&S	downpipe & spreader	ch	chiller
EGL	existing ground line	ch	chiller
EMB	electrical meterboard	ch	chiller
F1	finish 1	ch	chiller
F2	finish 2	ch	chiller
F3	finish 3	ch	chiller
F4	finish 4	ch	chiller
F5	finish 5	ch	chiller
FB	face brick	ch	chiller
FC	fibre cement	ch	chiller
FFL	finished floor level	ch	chiller
F	fixed glass	ch	chiller
FGL	finished ground line	ch	chiller
GM	gas meter	ch	chiller
HWS	hot water service	ch	chiller
HG	half-round gutter	ch	chiller
PS	plasterboard	ch	chiller
SC	solder course	ch	chiller
TFB	timber floor boards	ch	chiller
WM	water meter	ch	chiller



01 | North Elevation
1:200



02 | East Elevation
1:200



03 | aged care plus logo
1:50

date	issue	amendment
04/08/17	e	issue for S96
28/07/17	d	issue for S96
02/08/15	c	issue for DA
17/08/15	b	issue for coordination
05/08/15	a	preliminary issue for section J

north & east elevations

pacific lodge aged care
the salvation army aged care plus,
COLLAROY

project reference: SAL12066
drawn: JC | SN | SL
checked: ST | AE | JC
scale: 1:200, 1:50 @ a2



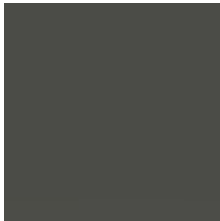


section 96:
removal of proposed
new maintenance workshop

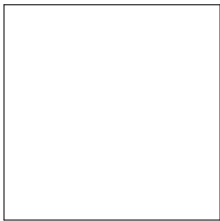
F1 - Finish 1 : light coloured brick with darker brick band
adjacent ground



F2 - Finish 2 : dark sheet metal cladding or similar



F3 - Finish 3 : rendered finish



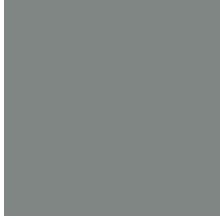
F4 - Finish 4 : dark panelling, face brick



F5 - Finish 5 - sandstone panels



CCR - colorbond corrugated roofing, windspray or similar



figured dimensions take precedence over scaled
drawings | contractors to check and verify all levels
datum and dimensions on site | all materials and
workmanship to be in accordance with current written
manufacturers instructions local regulations and SAA
codes | conflicting information to be brought to notice
of the architect and clarification sought before
proceeding with any works | all drawings are not for
construction and are subject to further design
development, consultant input, council and legislative
requirements.

fittings & finishes			
BDRY	boundary	b	basin
BOE	brick on edge	b/head	bulkhead
BFB	bagged painted	ca	cavity sliding door
	brickwork	dy	dryer
CCR	colorbond corrugated	dw	dishwasher
	roof sheeting	edh	exhaust fan
	colorbond facade	f	fessier
CFC	compressed fibre	fw	floor waste
	concrete	hc	hollow core door
CONC	concrete	hr	handrail
CJ	control joint	lb	letterbox
CT	ceramic tile	m	mirror
CPT	carpet	mw	microwave
DP	downpipe	o/h	overhead
DP&S	downpipe & spreader	p	pantry
EGL	existing ground line	ref	refrigerator
EMB	electrical meterboard	rh	rangehood
F1	finish 1	sc	solid core door
F2	finish 2	sh	soap holder
F3	finish 3	ss	stainless steel sink
F4	finish 4	st	stove
F5	finish 5	shwr	shower
FB	face brick	t	toilet
FC	fibre cement	tr	towel rail
FLL	finished floor level	th	toilet role holder
F	fixed glass	typ.	typical
FGL	finished ground line	wc	water closet
GM	gas meter	wm	washing machine
HWS	hot water service	v	vinyl
HG	half-round gutter	vp	vent pipe
PB	plasterboard	uo	under bench oven
SC	solder courses	wo	wall oven
TFB	timber floor boards		
WM	water meter		

04/08/17	d	issue for S96
07/10/16	c	issue for S96
02/09/15	b	issue for DA
26/08/15	a	issue for review
date	issue	amendment

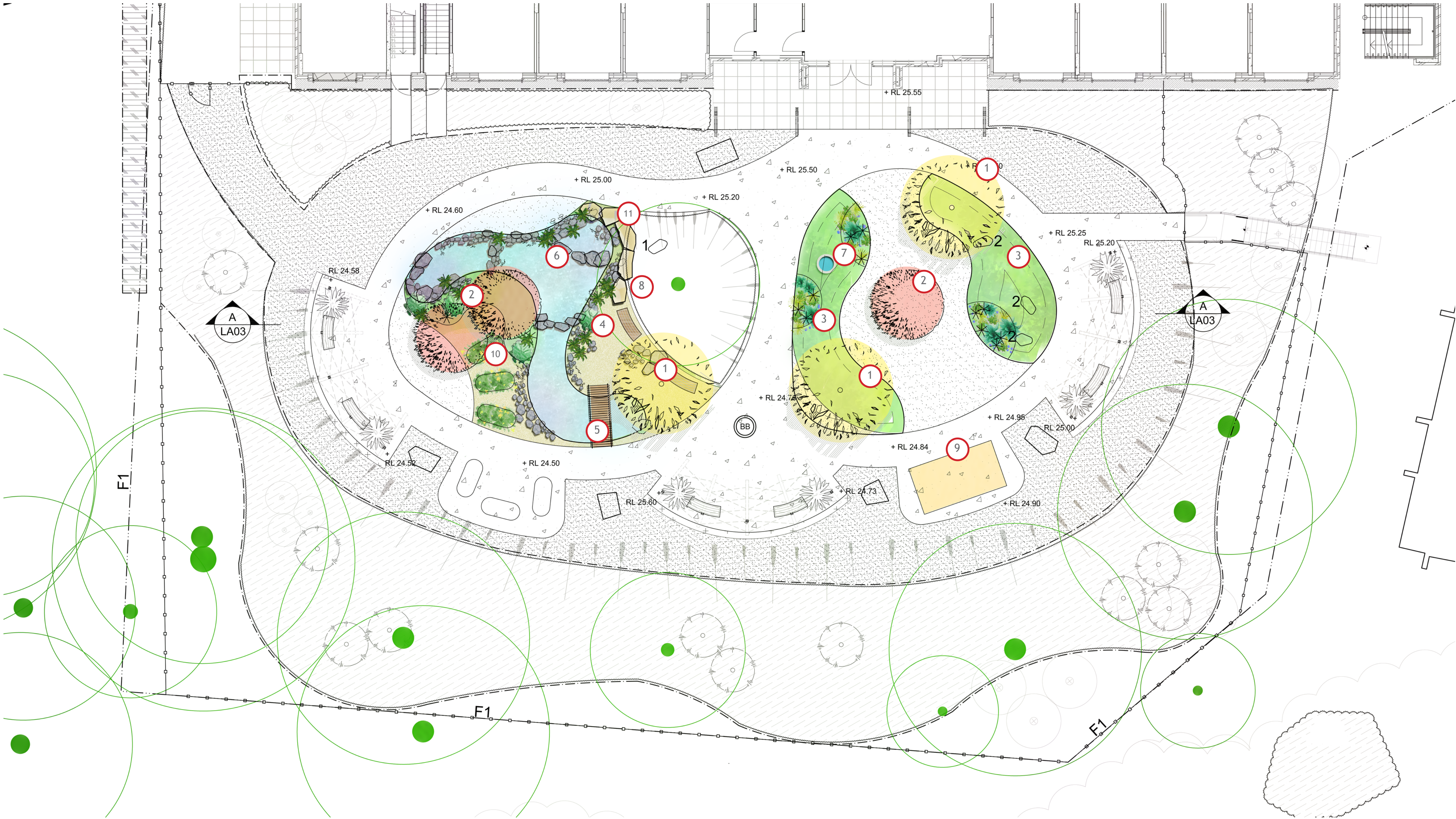
finishes schedules

pacific lodge aged care
the salvation army aged care plus,
COLLAROY

project reference: SAL12066
drawn: JC | SN | SL
checked: ST | AE | JC
scale: NTS @ a2



Legend (As per Tender)



[Symbol]	SITE BOUNDARY
[Symbol]	EXISTING SPOT LEVEL
[Symbol]	PROPOSED SPOT LEVEL
[Symbol]	TOP OF WALL LEVEL
[Symbol]	TOP OF SLAB LEVEL
[Symbol]	IRRIGATED PLANTING BED ON CONCRETE SLAB
[Symbol]	IRRIGATED PLANTING BED ON GRADE
[Symbol]	NEW ROLL TURF ON GRADE
[Symbol]	ARTIFICIAL TURF
[Symbol]	CONCRETE PAVING LIGHT BRUSHED FINISH DETAIL BY ENGINEER
[Symbol]	PRECAST CONCRETE PAVER DETAILS BY ARCHITECT
[Symbol]	PEBBLE MULCH PM1: ON SLAB PM2: ON GRADE
[Symbol]	STEPPING STONES
[Symbol]	GARDEN EDGE - CONCRETE KIWK KERB STANDARD PROFILE
[Symbol]	RAISED PLANTER WALL DETAILS BY ARCHITECT AND ENGINEER
[Symbol]	2200mm HIGH FENCE ALUMINIUM PALISADE WITH MATCHING GATES
[Symbol]	1200mm HIGH FENCE ALUMINIUM PALISADE WITH MATCHING GATES
[Symbol]	SOLID TEAK TIMBER BENCH WITH ARMRESTS AND BACKING BY ASCOTT TEAK
[Symbol]	ORNAMENTAL POT - SELF CONTAINED WATER FEATURE
[Symbol]	BIRDBATH 800MM DIA BRONZE LORIKEET BIRDBATH BYWILLIEWILDLIFESCUPTURES.COM.AU
[Symbol]	POT TYPE 1 (2) 1200 X 600mm QUATRO CODE: ZDB121260
[Symbol]	POT TYPE 2 (13) 900 X 600mm QUATRO CODE: ZDB121260
[Symbol]	POT TYPE 3 (4) 600 X 600mm QUATRO CODE: ZDB121260
[Symbol]	RECTANGULAR POT TYPE 1(5) 1800 X 600mm QUATRO CODE: Z6M186060
[Symbol]	STEEL ARBOR
[Symbol]	RAISED GARDEN BED WITH AG DRAIN OUTLET UNDER CONC. TO S.W
[Symbol]	LANDSCAPE BATTERS MAX 1:3
[Symbol]	ANIMAL SCULPTURES 1. Cockatoo Wooden Garden Art Metal Dimensions: 33x116 cm Material: Metal ID: 200501813 https://www.houseofhome.com.au
[Symbol]	2. Pelican Dimensions: 75x85 cm http://www.williewildlifesculptures.com.au/

Additional Landscape Items

- 1

New tree- Ginkgo biloba 100L
- 2

New tree- Pyrus calleryana 'Fronzam' 100L
- 3

Vegetated mound with informal planting bed (800mm Height Max)
- 4

Decomposed granite path 75mm thick
- 5

Wooden bridge (1200mm wide, 3000mm Long)
- 6

Pond with Epdm liner, rocks, aquatic planting, 2 water outlets to north with submersible pump.
- 7

Potential art work (pending budget)
- 8

Timber bench
- 9

Chicken coop
- 10

Residential planter box as per tender relocated
- 11

Feature rocks as per tender relocated

NOTE:
REFER SPEC FOR FURNITURE AND MATERIALITY SELECTIONS.

