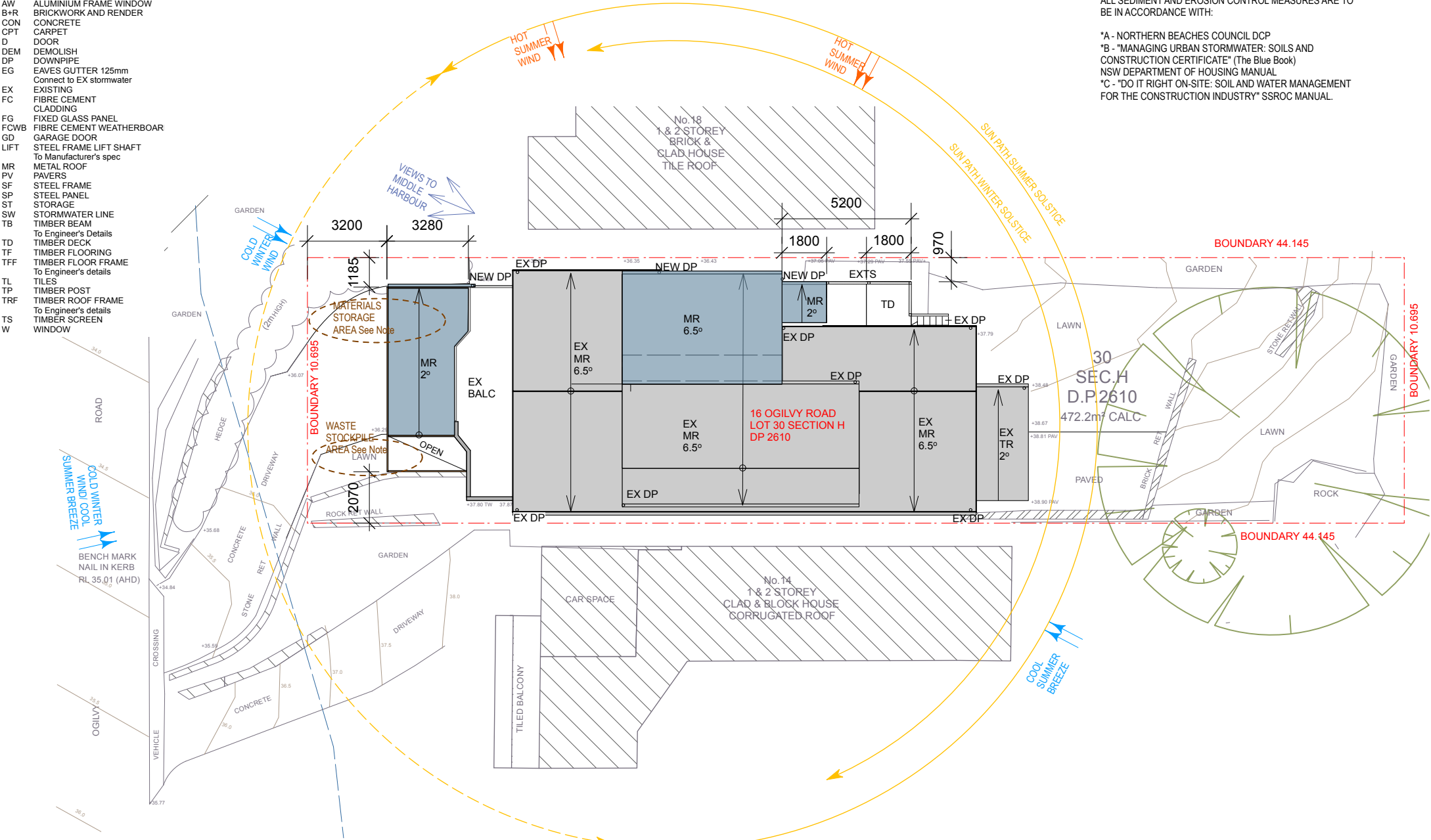


- LEGEND**
- AW ALUMINIUM FRAME WINDOW
 - B+R BRICKWORK AND RENDER
 - CON CONCRETE
 - CPT CARPET
 - D DOOR
 - DEM DEMOLISH
 - DP DOWNPIPE
 - EG EAVES GUTTER 125mm
 - EX EXISTING
 - FC FIBRE CEMENT CLADDING
 - FG FIXED GLASS PANEL
 - FCWB FIBRE CEMENT WEATHERBOAR
 - GD GARAGE DOOR
 - LIFT STEEL FRAME LIFT SHAFT
 - To Manufacturer's spec
 - MR METAL ROOF
 - PV PAVERS
 - SF STEEL FRAME
 - SP STEEL PANEL
 - ST STORAGE
 - SW STORMWATER LINE
 - TB TIMBER BEAM
 - To Engineer's Details
 - TD TIMBER DECK
 - TF TIMBER FLOORING
 - TFF TIMBER FLOOR FRAME
 - To Engineer's details
 - TL TILES
 - TP TIMBER POST
 - TRF TIMBER ROOF FRAME
 - To Engineer's details
 - TS TIMBER SCREEN
 - W WINDOW

NOTE
ALL SEDIMENT AND EROSION CONTROL MEASURES ARE TO BE IN ACCORDANCE WITH:
*A - NORTHERN BEACHES COUNCIL DCP
*B - "MANAGING URBAN STORMWATER: SOILS AND CONSTRUCTION CERTIFICATE" (The Blue Book)
NSW DEPARTMENT OF HOUSING MANUAL
*C - "DO IT RIGHT ON-SITE: SOIL AND WATER MANAGEMENT FOR THE CONSTRUCTION INDUSTRY" SSROC MANUAL



PROPOSED NEW CONSTRUCTION
EXISTING CONSTRUCTION



Megan McGlinchey
Architect
31 Cutler Road
Clontarf NSW 2093
e megan@macmil.com.au
m 0425262745 reg 5761

A		5/6/2025	DEVELOPMENT APPLICATION SUBMISSION	
ISSUE	DATE		REVISION	
PROJECT	16 OGILVY ROAD CLONTARF			PROJECT # 2502
CLIENT	G + D DAVIDSON		DATE # 10/6/2025	DWG #
DWG	Site Plan + Site Analysis + SECP		SCALE @ A3 1:200	DA001
			DRAWN	
			CHKD MM	
			REVISION	A