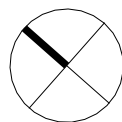
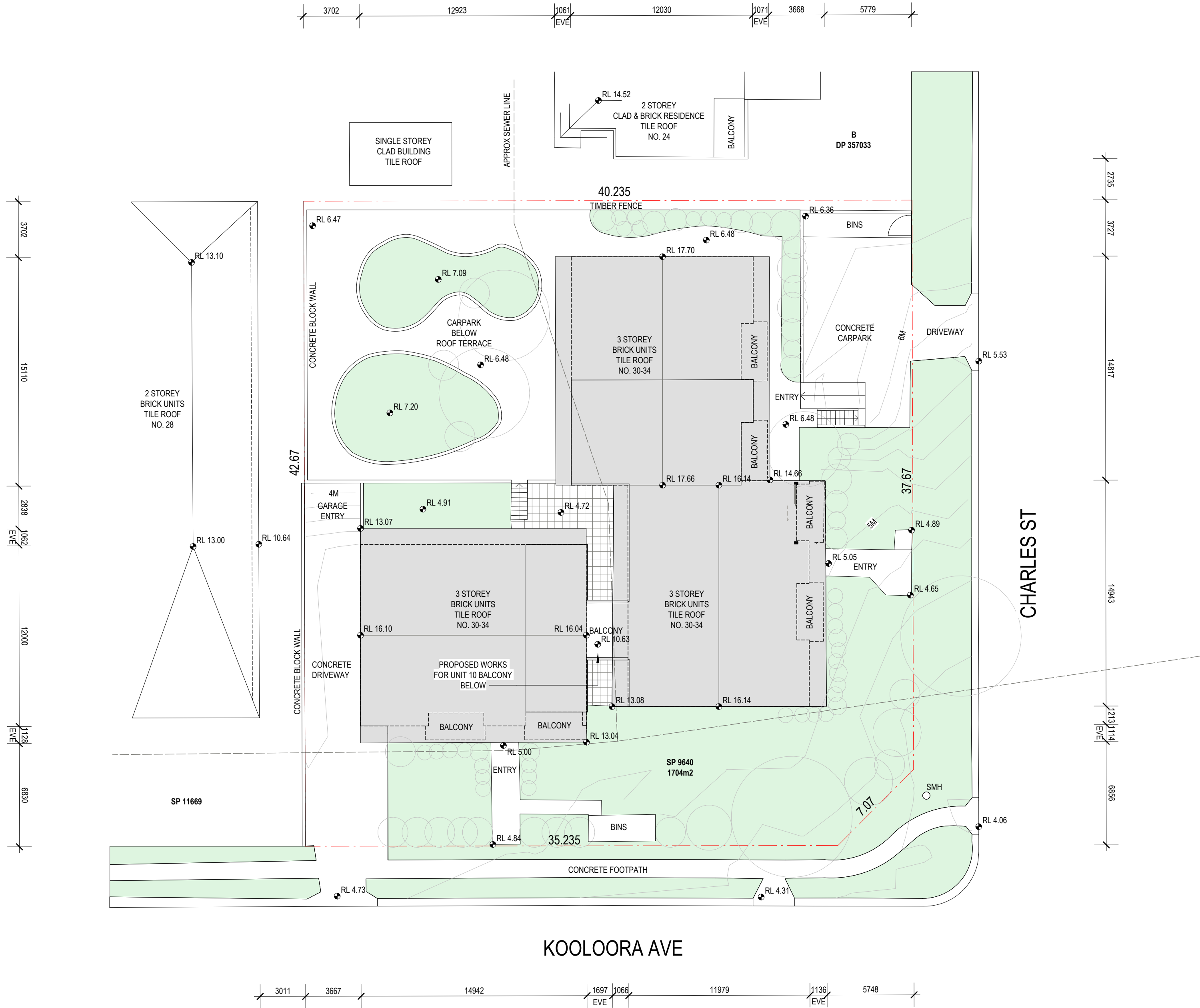
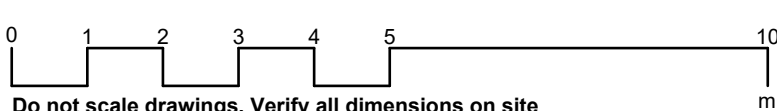
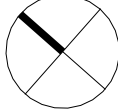
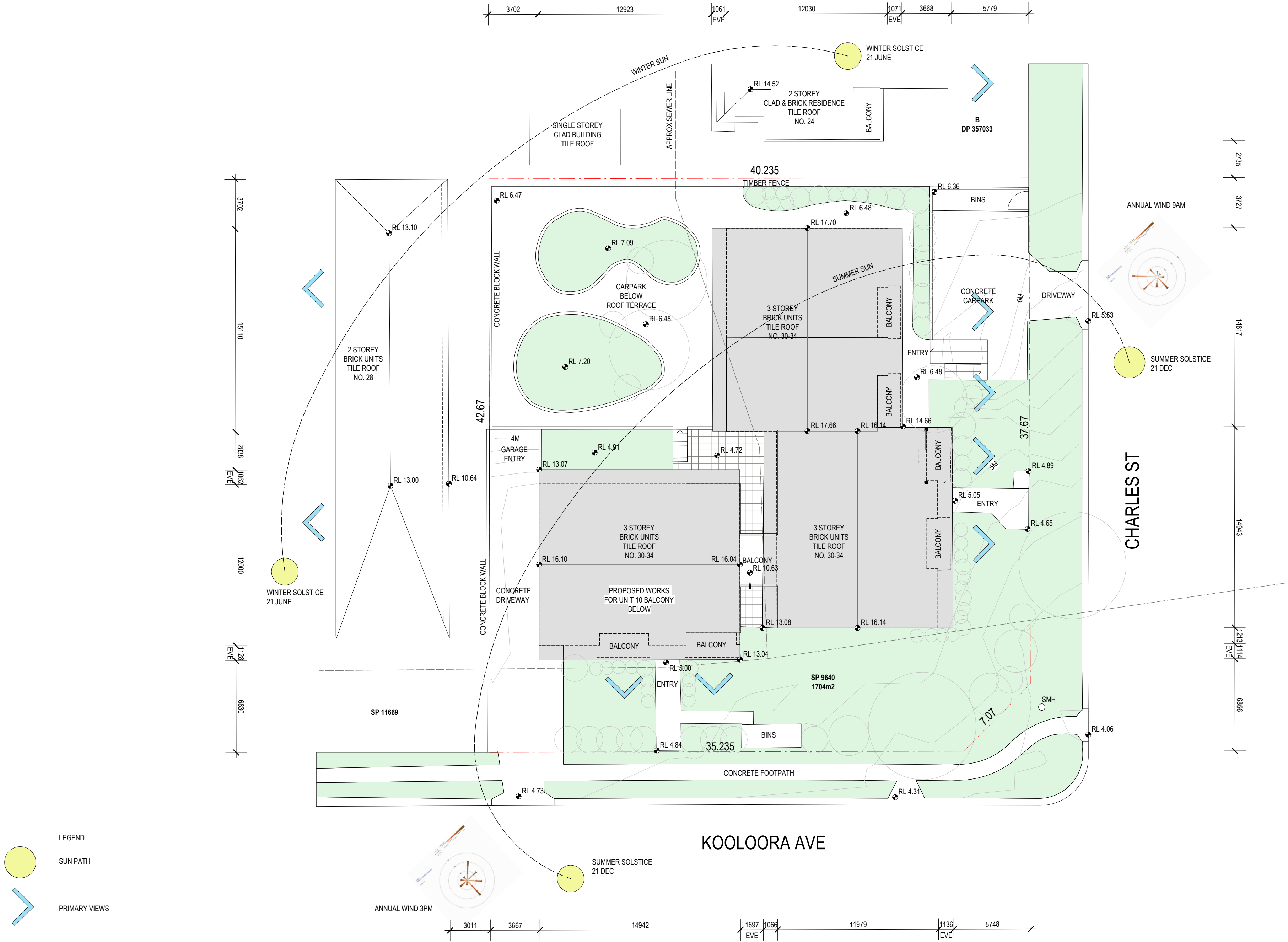




10/30-34 KOOLOORA AVENUE, FRESHWATER, NSW, 2096

DEVELOPMENT APPLICATION PART LOT 10 SP 9640







SOUTH ELEVATION - VIEW FROM KOOLOORA AVE

PROPOSED LOCATION
OF ENCLOSED
BALCONY



SOUTH ELEVATION - VIEW FROM FOOTPATH

PROPOSED LOCATION
OF ENCLOSED
BALCONY



SOUTH ELEVATION - DETAIL VIEW

LOCATION OF NEW
WINDOWS PROPOSED

EXISTING BRICK
BALUSTRADE TO BE
RETAINED



VIEW LOOKING FROM COMMON AREA

PROPOSED LOCATION
OF ENCLOSED
BALCONY NOT SEEN
FROM COMMON AREA



VIEW FROM CORNER OF COMMON AREA

PROPOSED LOCATION
OF ENCLOSED
BALCONY



SOUTH ELEVATION - DETAIL VIEW

LOCATION OF NEW
WINDOWS PROPOSED

EXISTING BRICK
BALUSTRADE TO BE
RETAINED



INTERNAL VIEW LOOKING OUT TO BALCONY

INTERNAL PLASTER
LINING TO BE ADDED

DOOR TO BE
REMOVED



VIEW FROM BALCONY LOOKING NORTH

UNIT 10 WINDOWS

LOCATION OF NEW
WINDOWS PROPOSED

EXISTING BRICK
BALUSTRADE TO BE
RETAINED



VIEW LOOKING AT BED 1

DOOR TO BE
REMOVED

AIR CON UNIT TO BE
REMOVED

NEW RAISED FLOOR
TO MATCH INTERNAL
LEVEL



VIEW FROM BALCONY LOOKING SOUTH

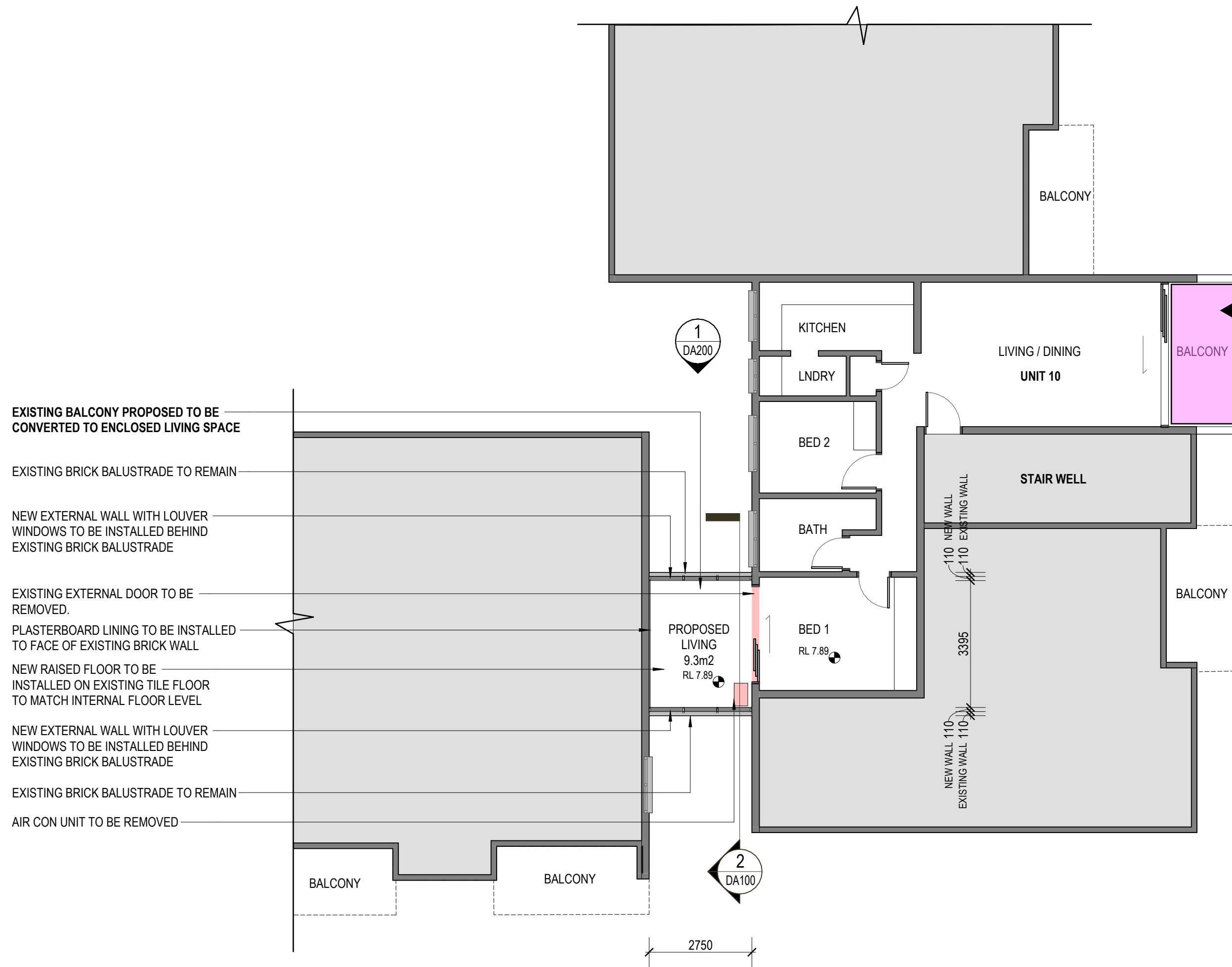
SOUTH ELEVATION - DETAIL VIEW

LOCATION OF NEW
WINDOWS PROPOSED

CLOTHLINE TO BE
REMOVED

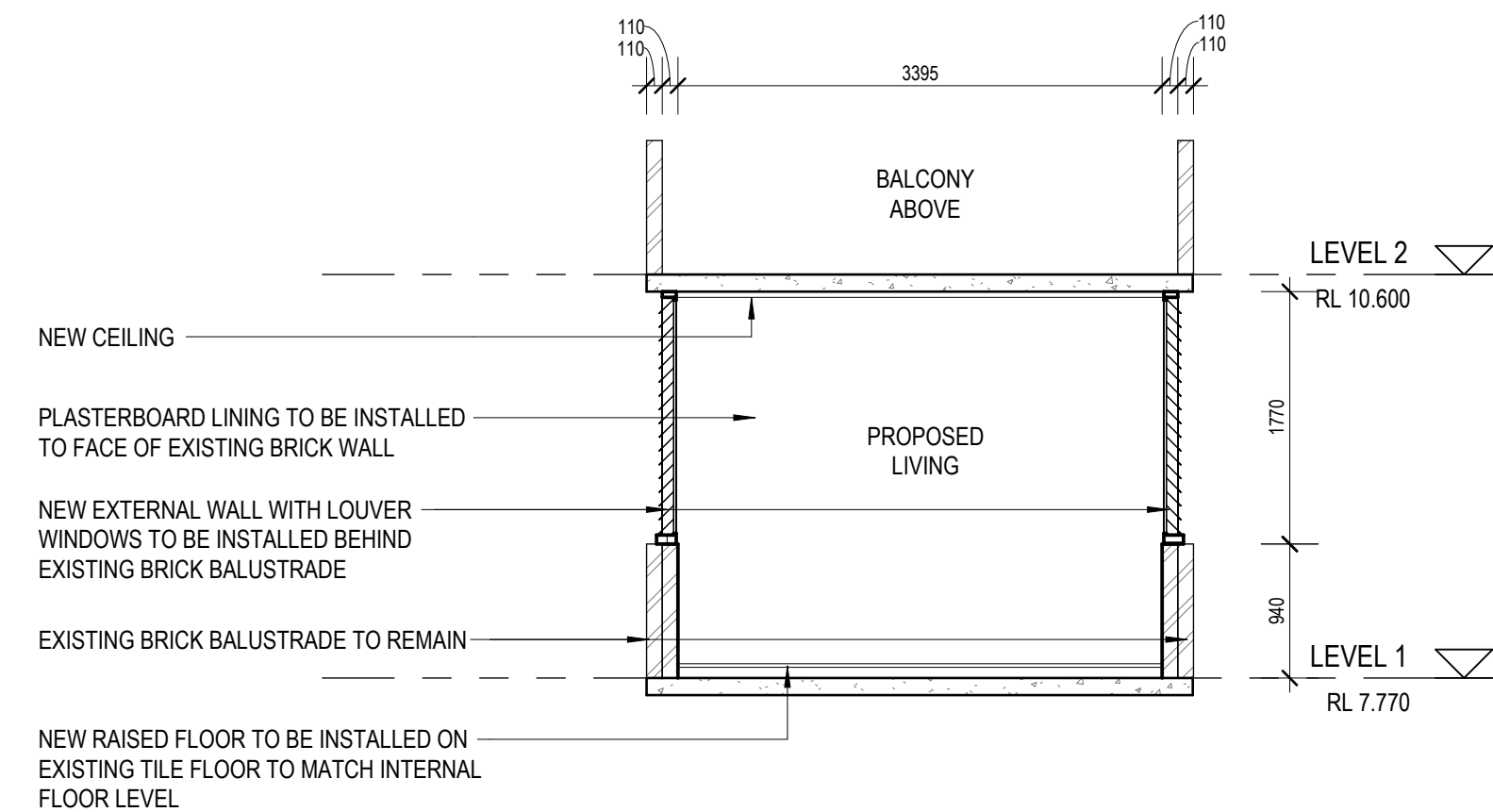
EXISTING BRICK
BALUSTRADE TO BE
RETAINED

AIR CON UNIT TO BE
REMOVED



1 LEVEL 1 PROPOSED
SCALE: 1 : 100

EASTERN BALCONY TO BE
USED FOR STORAGE OF
CONSTRUCTION MATERIALS
AND WASTE



2 PROPOSED SECTION
SCALE: 1 : 50

