


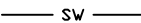


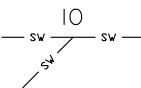
2 CECIL STREET, FAIRLIGHT

STORMWATER MANAGEMENT PLAN

DRAWING INDEX:

- SW-000 COVER SHEET
- SW-001 PIPE LAYOUT – GROUND FLOOR
- SW-002 FIRST FLOOR LAYOUT
- SW-003 ROOF LAYOUT
- SW-100 DETAILS SHEET 1
- SW-200 DETAILS SHEET 2


LEGEND:

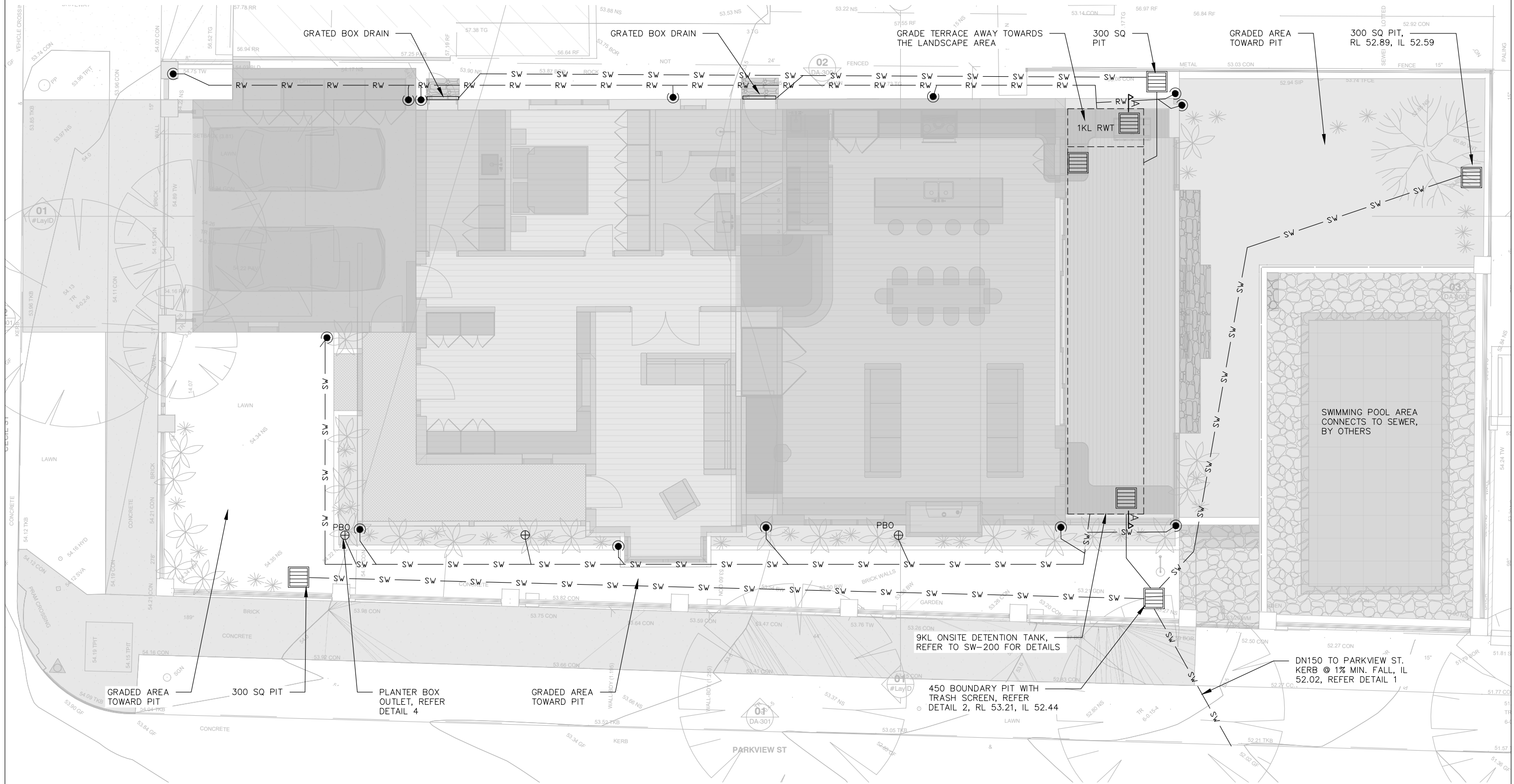
-  DOWNPIPE
-  SW STORMWATER PIPE
-  RW RAINWATER PIPE
-  DRAINAGE PIT
-  IO INSPECTION OPENING

NOTES:

- ALL DIMENSIONS TO BE CONFIRMED ON SITE PRIOR TO CONSTRUCTION.
- SITE LAYOUT BASED ON ARCHITECTURAL PLANS BY RAMA (04/06/2025) AND SURVEY PLANS BY CMS SURVEYORS PTY LTD (11/07/2024).
- LOCATION OF ALL SERVICES MUST BE CONFIRMED ON SITE PRIOR TO COMMENCEMENT OF EXCAVATION WORKS.
- ALL STORMWATER DRAINAGE PIPES AND ASSOCIATED DEVICES ARE TO BE INSTALLED IN ACCORDANCE WITH THE RELEVANT STANDARDS, THE BUILDING CODE OF AUSTRALIA, MANUFACTURER’S RECOMMENDATIONS, SYDNEY CATCHMENT AUTHORITY RECOMMENDED PRACTICE, AND LOCAL COUNCIL, AS APPLICABLE.
- ALL INVERT LEVELS PROVIDED ON THIS DRAWING ARE REDUCED TO AHD AND BASED ON INTERPOLATED SURFACE LEVELS AND SYSTEM REQUIREMENTS.
- WHERE POSSIBLE, PIPEWORK SHALL BE LOCATED EXTERNAL TO THE BUILDING.
- DOWNPIPES AND STORMWATER LINES TO BE SEALED DN100 uPVC UNLESS OTHERWISE NOTED.
- STORMWATER PIPES TO BE GRADED AT A MINIMUM 1% UNLESS NOTED OTHERWISE.
- ALTERNATIVE GUTTER AND DOWNPIPE CONFIGURATION MAY BE INSTALLED PROVIDED IT COMPLIES WITH AS3500.
- ALL PIPE AND CONDUITS TO BE MARKED IN ACCORDANCE WITH AS1345 – 1995.
- TRENCHES AND SERVICE SEPARATIONS IN ACCORDANCE WITH AS/NZS 5601, AS/NZS 3500, AND AS/CA S009.

NOT FOR CONSTRUCTION

This drawing is confidential and shall only be used for the purposes of this project.					Scale	NA	DO NOT SCALE. ALL DIMENSIONS ARE IN MILLIMETRES UNLESS OTHERWISE SPECIFIED	THE SIGNING OF THIS TITLE BLOCK CONFIRMS THE DESIGN AND DRAFTING OF THIS PROJECT HAVE BEEN PREPARED AND CHECKED IN ACCORDANCE WITH THE STELLEN CONSULTING QUALITY ASSURANCE SYSTEM				 Stellen Consulting ABN 61 149 095 189	2 CECIL STREET, FAIRLIGHT						
REVISIONS										DESIGNED	EHA			CHECKED	MH	COVER SHEET			
											DRAWN			EHA	CHECKED		MH		
														APPROVED	MH		DATE	05/06/2025	
	1	EHA	05/06/2025	APPROVED FOR DA SUBMISSION		MH													
	0	EHA	13/05/2025	APPROVED FOR DA SUBMISSION		MH													
	No.	BY	DATE	DESCRIPTION		APPD													



PLAN
1
PIPE LAYOUT-GROUND FLOOR
1:100

NOT FOR CONSTRUCTION

This drawing is confidential and shall only be used for the purposes of this project.				
REVISIONS				
1	EHA	05/06/2025	APPROVED FOR DA SUBMISSION	MH
0	EHA	13/05/2025	APPROVED FOR DA SUBMISSION	MH
No.	BY	DATE	DESCRIPTION	APPD

Scale
1:100
DO NOT SCALE. ALL DIMENSIONS ARE IN MILLIMETRES UNLESS OTHERWISE SPECIFIED

THE SIGNING OF THIS TITLE BLOCK CONFIRMS THE DESIGN AND DRAFTING OF THIS PROJECT HAVE BEEN PREPARED AND CHECKED IN ACCORDANCE WITH THE STELLEN CONSULTING QUALITY ASSURANCE SYSTEM			
DESIGNED	EHA	CHECKED	MH
DRAWN	EHA	CHECKED	MH
APPROVED	MH	DATE	05/06/2025

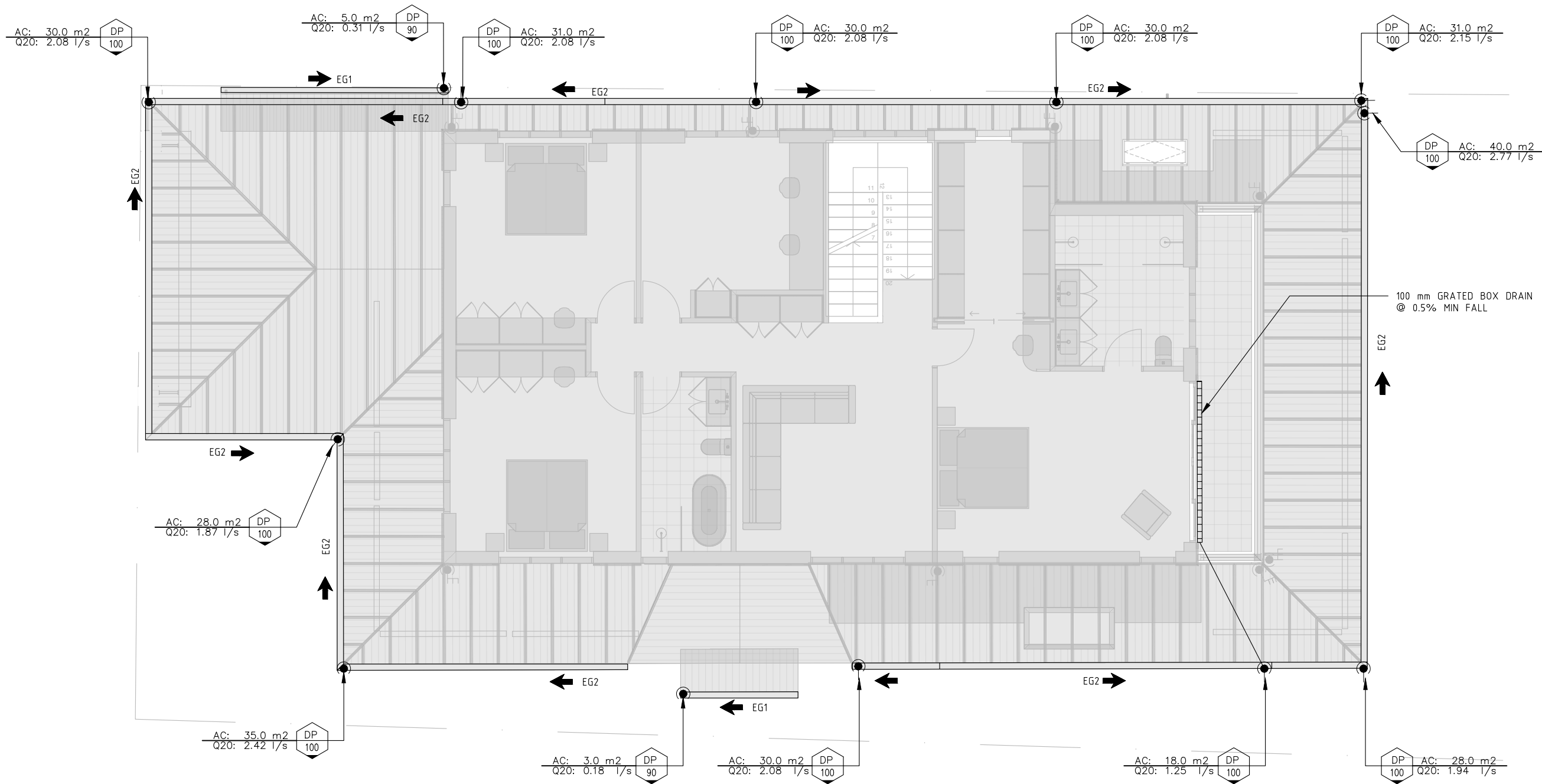
**Stellen**

Stellen Consulting ABN 61 149 095 189

2 CECIL STREET, FAIRLIGHT

PIPE LAYOUT - GROUND FLOOR

Size	A3	Status	APPROVED FOR DA SUBMISSION	Dwg No.	P171501-DR-SW-001	Rev.	1
------	----	--------	----------------------------	---------	-------------------	------	---



PLAN 2
FIRST FLOOR
1:100

NOT FOR CONSTRUCTION






This drawing is confidential and shall only be used for the purposes of this project.					Scale		THE SIGNING OF THIS TITLE BLOCK CONFIRMS THE DESIGN AND DRAFTING OF THIS PROJECT HAVE BEEN PREPARED AND CHECKED IN ACCORDANCE WITH THE STELLEN CONSULTING QUALITY ASSURANCE SYSTEM				2 CECIL STREET, FAIRLIGHT										
REVISIONS						1:100	DO NOT SCALE. ALL DIMENSIONS ARE IN MILLIMETRES UNLESS OTHERWISE SPECIFIED							<div><div></div><div>Stellen</div><div>Stellen Consulting ABN 61 149 095 189</div></div>							
							DESIGNED	EHA	CHECKED	MH	FIRST FLOOR LAYOUT										
							DRAWN	EHA	CHECKED	MH											
							APPROVED	MH	DATE	05/06/2025											
	1	EHA	05/06/2025	APPROVED FOR DA SUBMISSION	MH									Size	A3	Status	APPROVED FOR DA SUBMISSION	Drw No.	P171501-DR-SW-002	Rev.	1
	0	EHA	13/05/2025	APPROVED FOR DA SUBMISSION	MH																
	No.	BY	DATE	DESCRIPTION	APPD																

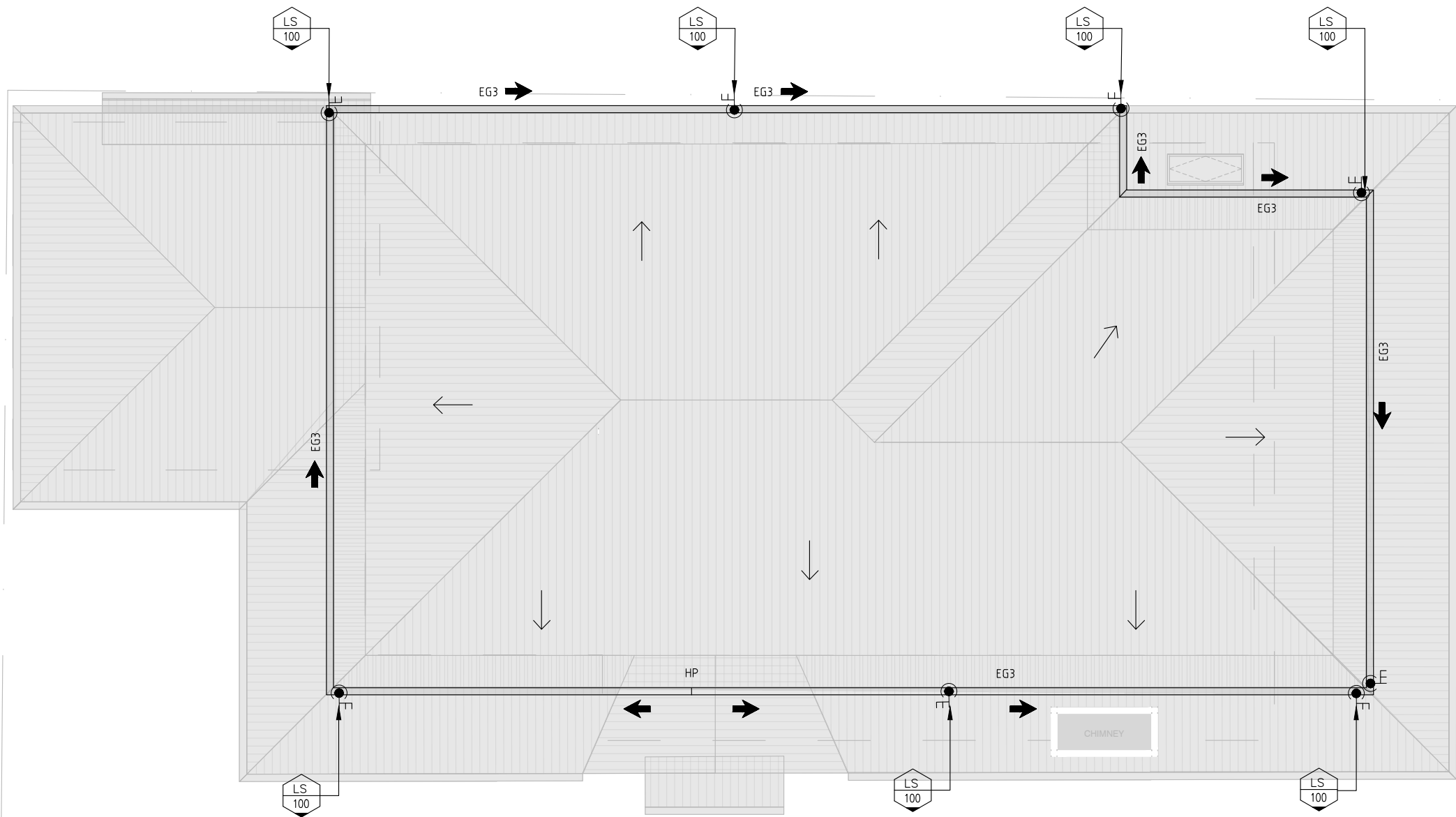


Stellen Consulting ABN 61 149 095 189

NOMENCLATURE
DP - DOWNPIPE
EG - EAVES GUTTER
LS - LEVEL SPREADER
RWO - RAINWATER OUTLET
PBO - PLANTER BOX OUTLET
Q20 - 20YR 5 MINUTE ARI FLOW RATE

GUTTER SIZING
EAVE GUTTER DESIGNED TO ARI (20YR:202mm/hr)
EG1 - MIN CSA 5,000 mm²
EG2 - MIN CSA 6,500 mm²
EG3 - MIN CSA 9,000 mm²

- LEGEND
-  DOWNPIPE TYPE AND DIAMETER
 -  DIRECTION OF FALL
 -  LEVEL SPREADER
 -  RAINWATER OUTLET
 -  PLANTER BOX OUTLET



PLAN
3

ROOF LAYOUT
1:100

NOT FOR CONSTRUCTION

This drawing is confidential and shall only be used for the purposes of this project.				
REVISIONS				
1	EHA	05/06/2025	APPROVED FOR DA SUBMISSION	MH
0	EHA	13/05/2025	APPROVED FOR DA SUBMISSION	MH
No.	BY	DATE	DESCRIPTION	APPD

Scale
1:100

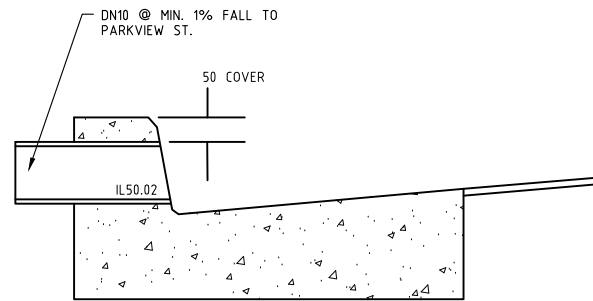
DO NOT SCALE. ALL DIMENSIONS ARE IN MILLIMETRES UNLESS OTHERWISE SPECIFIED

THE SIGNING OF THIS TITLE BLOCK CONFIRMS THE DESIGN AND DRAFTING OF THIS PROJECT HAVE BEEN PREPARED AND CHECKED IN ACCORDANCE WITH THE STELLEN CONSULTING QUALITY ASSURANCE SYSTEM			
DESIGNED	EHA	CHECKED	MH
DRAWN	EHA	CHECKED	MH
APPROVED	MH	DATE	05/06/2025

**Stellen**

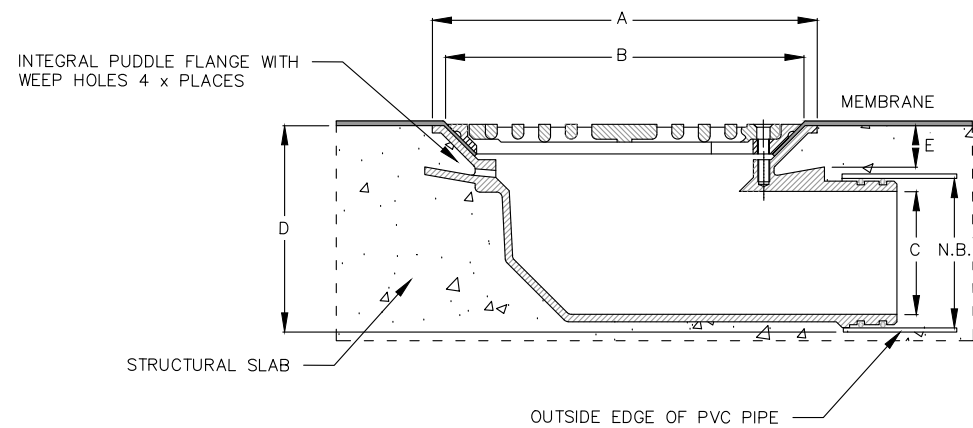
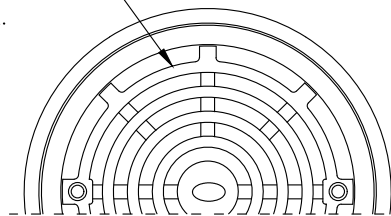
Stellen Consulting ABN 61 149 095 189

2 CECIL STREET, FAIRLIGHT			
ROOF LAYOUT			
Size A3	Status APPROVED FOR DA SUBMISSION	Dwg No. P171501-DR-SW-003	Rev. 1



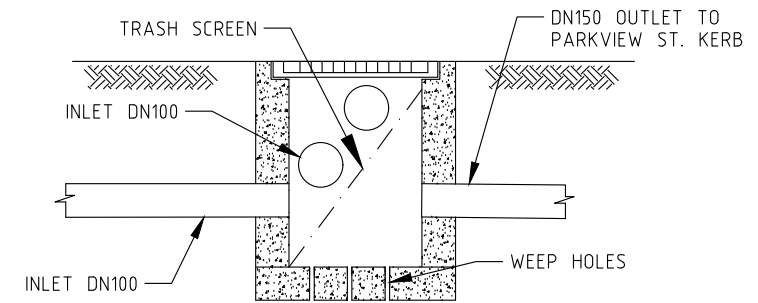
DETAIL 1
TYPICAL KERB CONNECTION
NOT TO SCALE

MEMBRANE RING FASTENS TO BODY
INDEPENDENTLY
OF GRATE TO ALLOW ACCESS TO SUMP
WITHOUT BREAKING MEMBRANE SEAL.



N.B.	A	B	C	D	E	F	G
100	260	240	83	140	28	45	25

DETAIL 3
TYPICAL DETAILS FOR CAST IN SLAB SPS
NOT TO SCALE



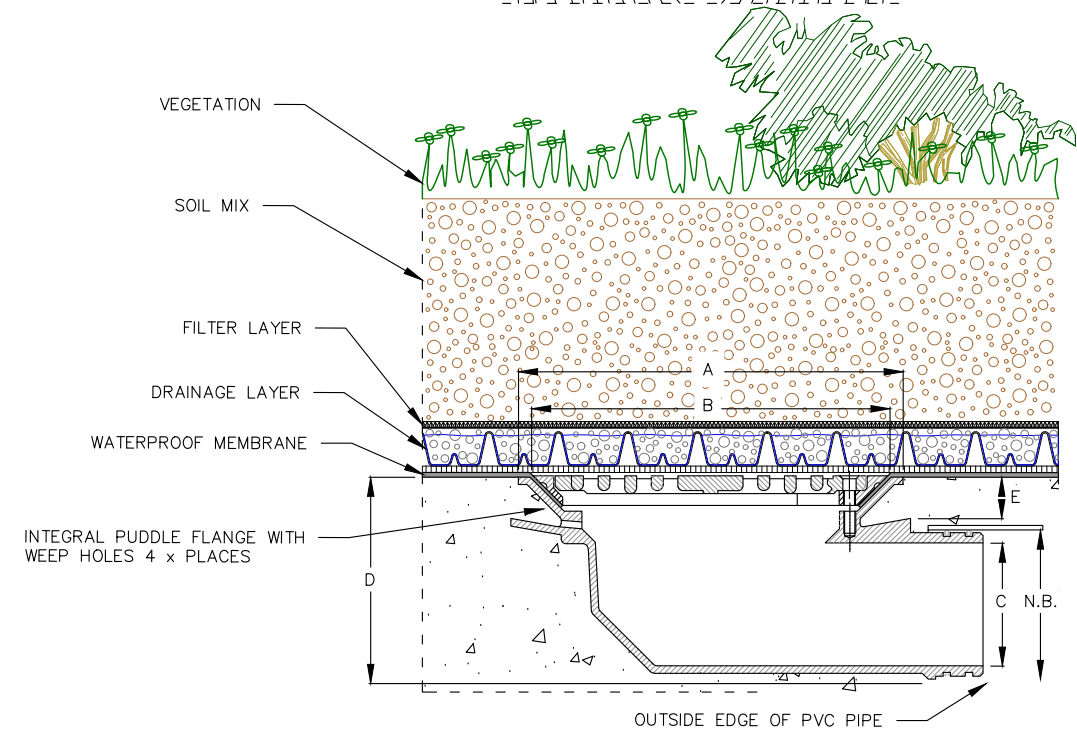
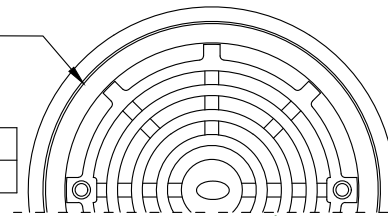
DETAIL 2
450 SQUARE MEDIUM DUTY PIT
NOT TO SCALE

NOTES:

- 'LYSAGHT' MAXIMESH RH3030 (HOT DIPPED GALVANISED) OR EQUIVALENT.
- MAXI MESH SCREENS MUST BE PLACED SUCH THAT THE LONG AXIS OF THE OVAL SHAPED HOLES ARE ORIENTATED HORIZONTALLY WITH THE PROTRUDING LIP ANGLED UPWARDS AND FACING TOWARDS THE OUTLET
- 20DIA AT 150 SPACING AT BASE OF SUMP. BEDDING TO BE 100 THICK SAND/GRAVEL MATERIAL.

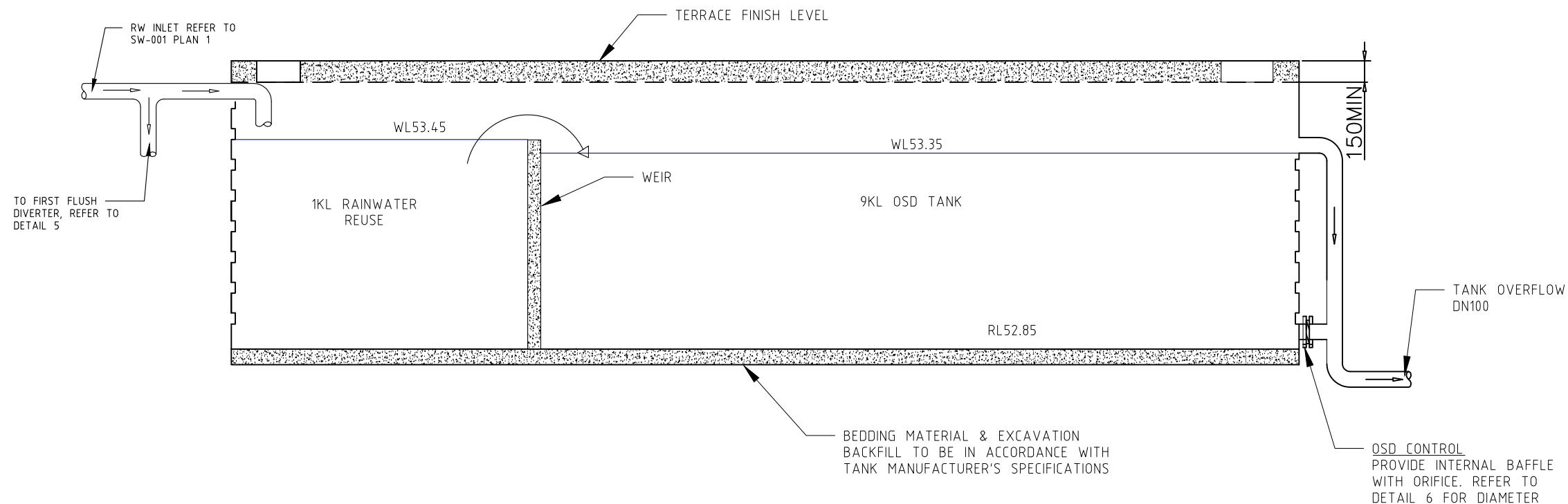
MEMBRANE RING FASTENS TO BODY
INDEPENDENTLY OF GRATE TO ALLOW ACCESS TO
SUMP WITHOUT BREAKING MEMBRANE SEAL.

N.B.	A	B	C	D	E
100	260	240	65	140	28

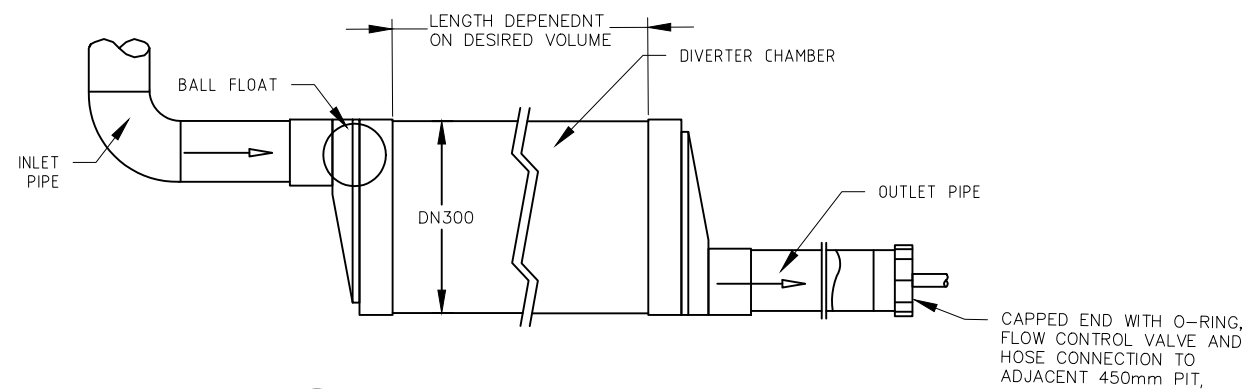


DETAIL 4
PLANTER BOX OUTLET TYPICAL DETAIL
NOT TO SCALE

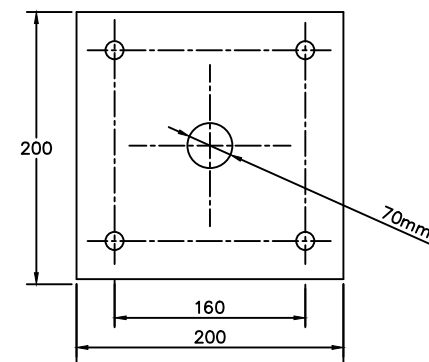
NOT FOR CONSTRUCTION



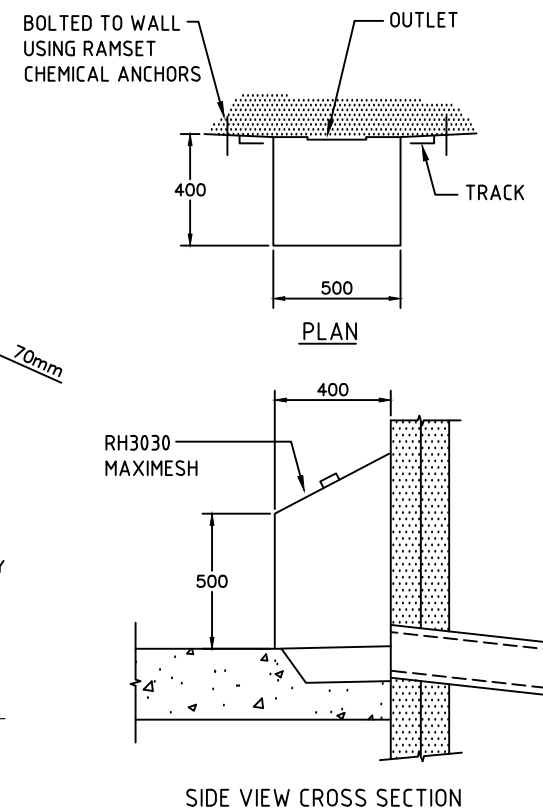
SECTION A-A RAINWATER REUSE AND ON SITE DETENTION ELEVATION
NOT TO SCALE



DETAIL 5 IN GROUND FIRST FLUSH DIVERter
NOT TO SCALE
NOTES:
1. INSTALL WITH MINIMUM 5 DEGREE SLOPE.
2. DIVERter VOLUME TO BE MIN 70L (1m of DN 300).



DETAIL 6 ORIFICE DETAIL
NOT TO SCALE



NOT FOR CONSTRUCTION

REVISIONS				
No.	BY	DATE	DESCRIPTION	APPD
0	EHA	13/05/2025	APPROVED FOR DA SUBMISSION	MH

Scale	
AS NOTED	
DO NOT SCALE. ALL DIMENSIONS ARE IN MILLIMETRES UNLESS OTHERWISE SPECIFIED	

THE SIGNING OF THIS TITLE BLOCK CONFIRMS THE DESIGN AND DRAFTING OF THIS PROJECT HAVE BEEN PREPARED AND CHECKED IN ACCORDANCE WITH THE STELLEN CONSULTING QUALITY ASSURANCE SYSTEM			
DESIGNED	EHA	CHECKED	MH
DRAWN	EHA	CHECKED	MH
APPROVED	MH	DATE	13/05/2025


Stellen
 Stellen Consulting ABN 61 149 095 189

2 CECIL STREET, FAIRLIGHT			
DETAIL - SHEET 2			

Size	Status	Drng No.	Rev.
A3	APPROVED FOR DA SUBMISSION	P171501-DR-SW-200	0