

Project

1130 Pittwater Road Collaroy

Date

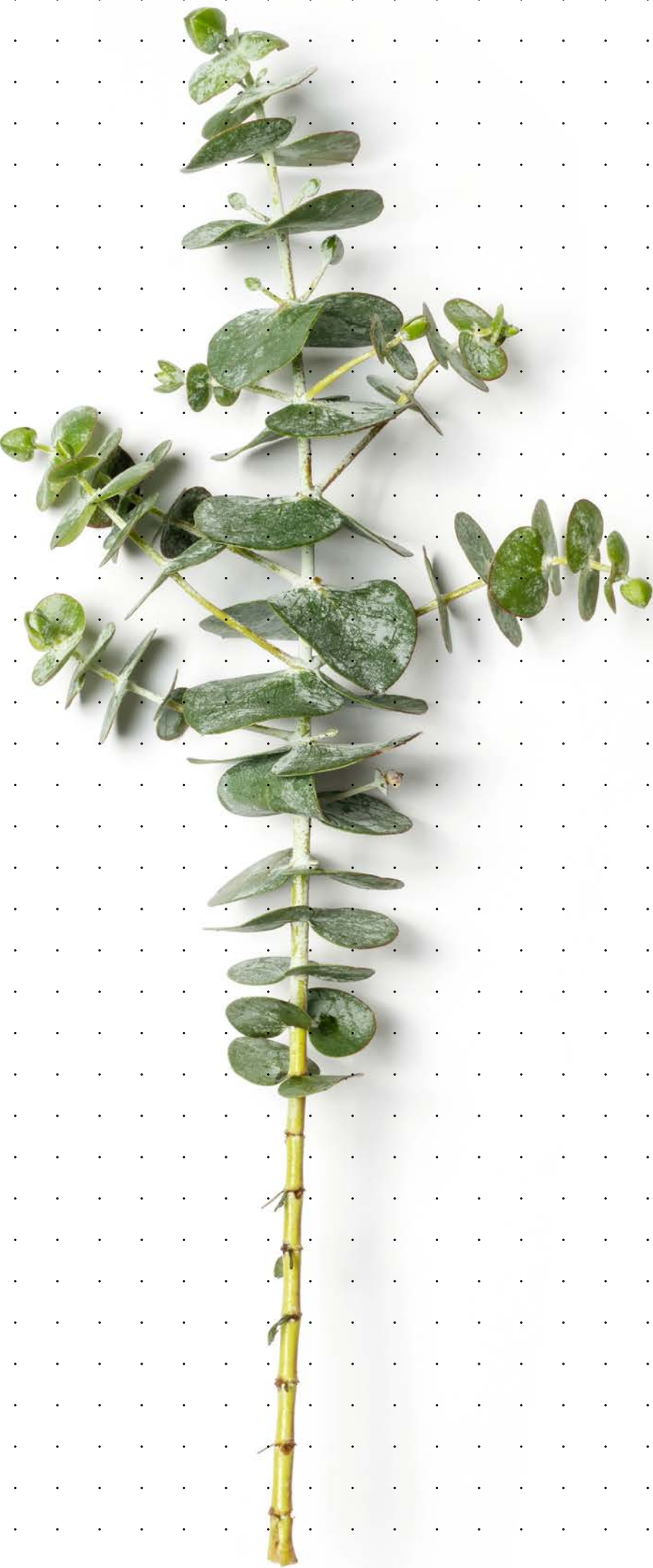
December 10 2024

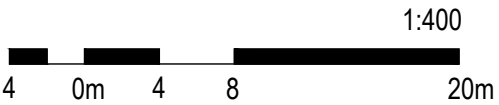
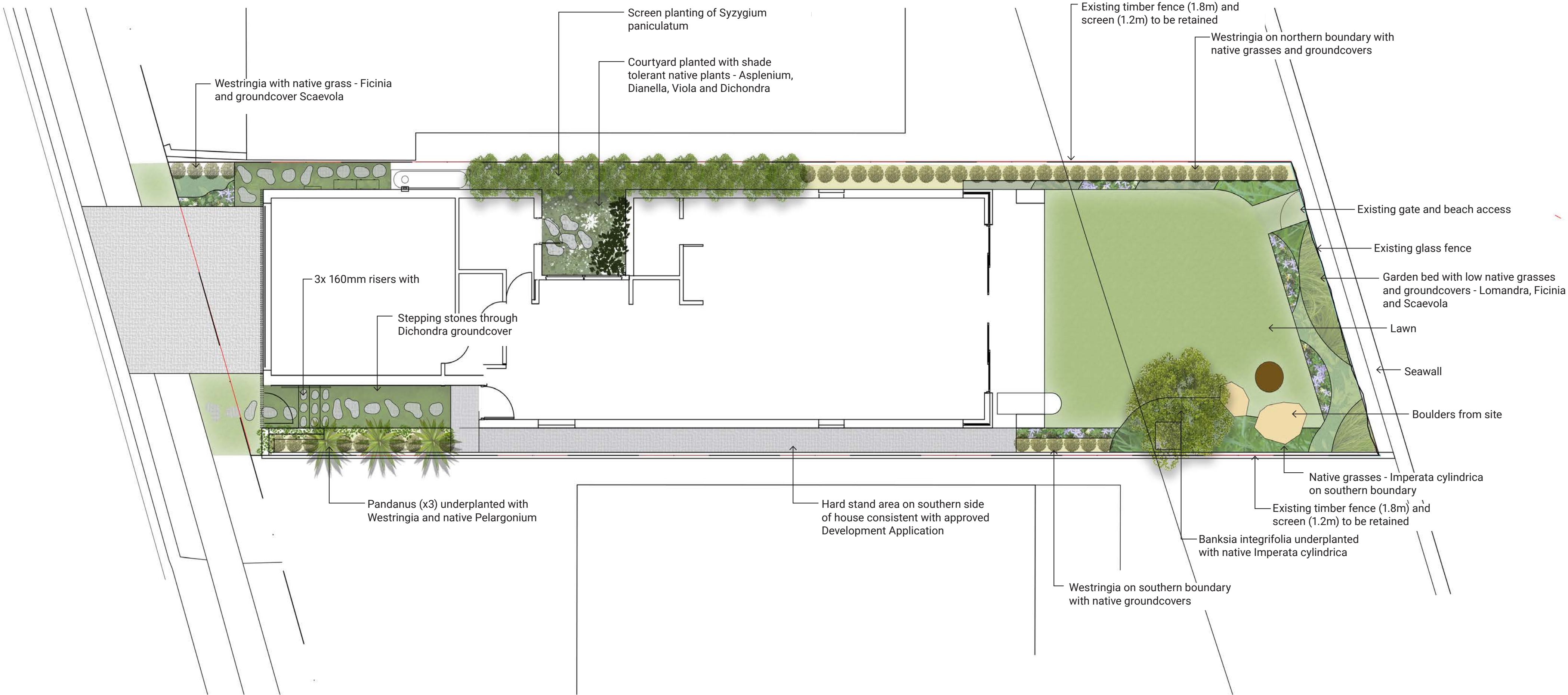
Purpose

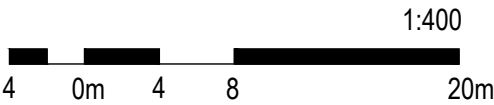
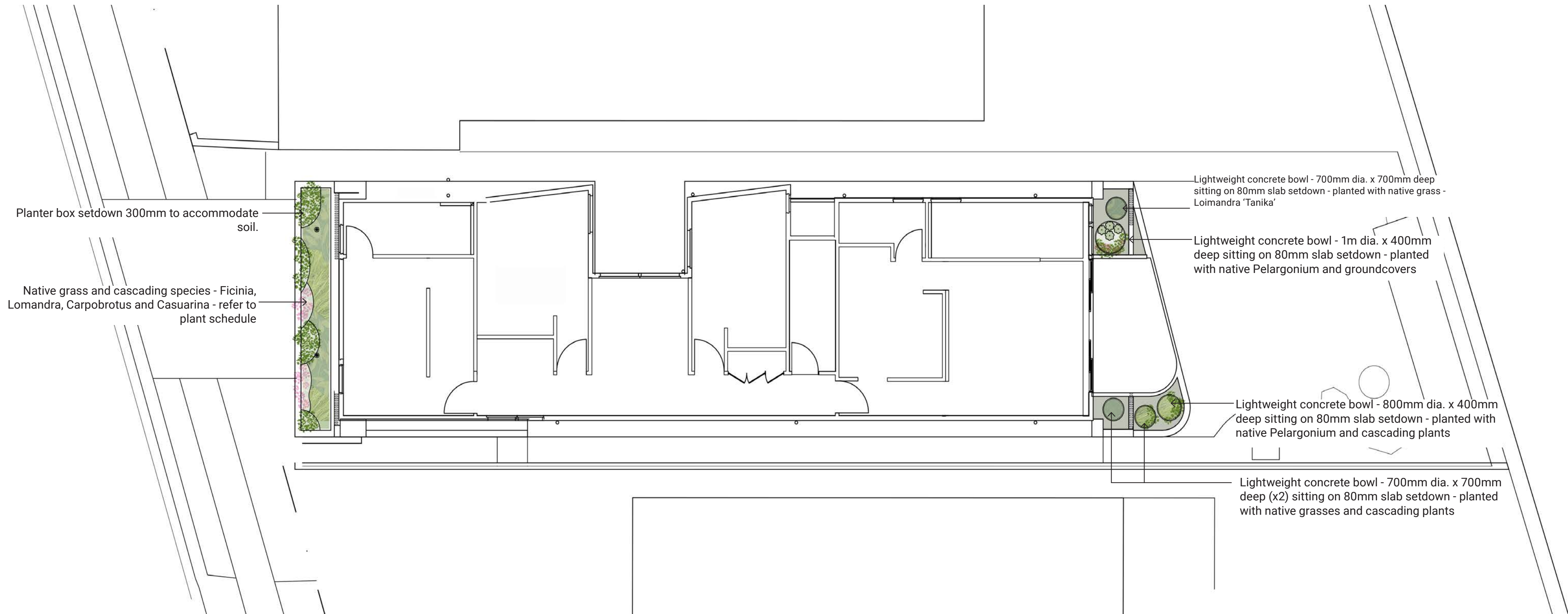
Section 4.55 Application - Landscape

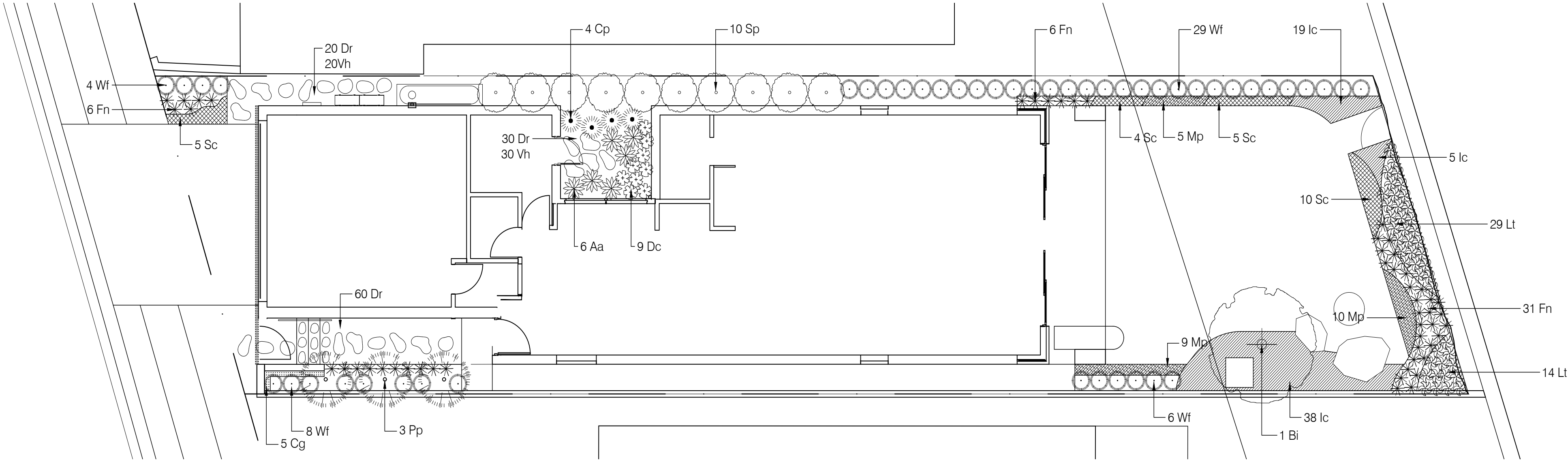
Revision

A

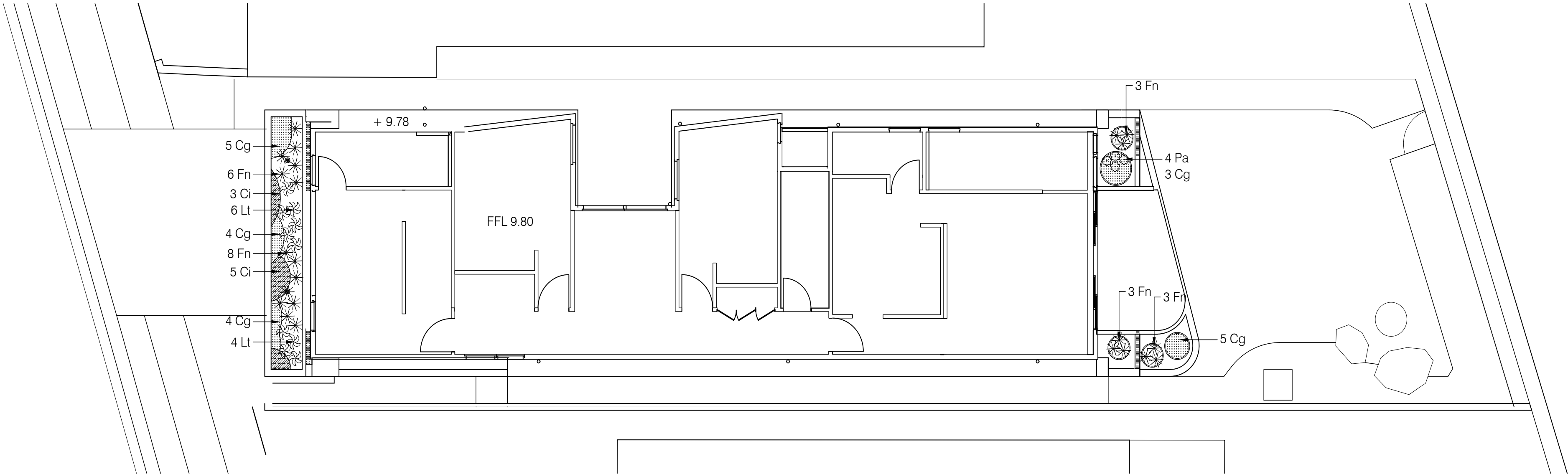




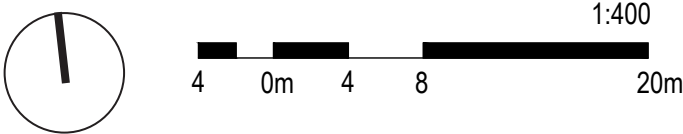




Ground Floor Planting



Upper Floor Planting



DEVELOPMENT APPLICATION *Planting*

1 Ecological Communities

The NSW Government Vegetation of the Sydney Metropolitan Area dataset indicates that prior to development, the plant communities would likely be **Spinifex Beach Strand Grassland of the Sydney Bioregion** on the frontline of coastal exposure, with **Coast Banksia and Coast Wattle Dune Scrub of the Sydney Bioregion** directly behind.

Where appropriate, proposed species are drawn from these communities.

2 Planting Criteria

- Plants for 1130 Pittwater Road should generally be:
- from the nearby ecological communities
 - non-invasive in the local area;
 - well suited to the climate and soil type;
 - resilient to predicted climate change;
 - generally shorter than 1.2m;
 - mix of flowering and non-flowering;
 - should include plants that will support habitat for native fauna.

3 Indicative Planting Schedule

Plants are indicative of the character - the list may need to be developed and amended to respond to nursery availability. However, any amendments will be consistent with the Planing Criteria listed above.

Trees						
ID	Botanical Name	Common Name	Installation Size	Mature Height	Mature Width	Quantity
Bi	<i>Banksia integrifolia</i> (1)	Coast Banksia	75L	6m	4m	1
Pp	<i>Pandanus tectorius</i> (2)	Screw Pine	75L	8m	3m	3
Sp	<i>Syzygium paniculatum</i> (3)	Lily Pilly	45L	8m	3m	10
Shrubs and Groundcovers						
ID	Botanical Name	Common Name	Installation Size	Mature Height	Mature Width	Quantity
Aa	<i>Asplenium australasicum</i>	Birds Nest Fern	25L	1m	1m	6
Cg	<i>Carpobrotus glaucescens</i> (4)	Giant Pigface	2.5L	200mm	1.5m	26
Ci	<i>Casuarina 'Cousin It'</i> (5)	Cousin It	2.5L	200mm	1.5m	8
Cp	<i>Crinum pedunculatum</i> (6)	Crinum Lily	5L	1.2m	1.2m	4
Dc	<i>Dianella caerulea</i> (7)	Flax Lily	2.5L	500mm	400mm	9
Dr	<i>Dichondra repens</i> (8)	Kidney Weed	2.5L	20mm	indefinite	110
Fn	<i>Ficinia nodosa</i> (9)	Knobby-headed Club Rush	2.5L	600mm	600mm	68
Ic	<i>Imperata cylindrica</i>	Blady Grass	2.5L	600mm	600mm	62
Lt	<i>Lomandra 'Tanika'</i> (10)	Spiny-headed Mat Rush	2.5L	600mm	600mm	53
Mp	<i>Myoporum parvifolium</i> (11)	Creeping Boobialla	2.5L	100mm	1.5m	24
Pa	<i>Pelargonium australe</i> (12)	Native Geranium	2.5L	300mm	300mm	4
Sc	<i>Scaevola calendulacea</i> (13)	Scaevola	2.5L	100mm	1m	24
Vh	<i>Viola hederacea</i> (14)	Native Violet	2.5L	50mm	indefinite	50
Wf	<i>Westringia fruticosa</i> (15)	Coastal Rosemary	5L	1.5m	1.5m	43

160 PITTWATER ROAD COLLAROY
Landscape Concept

December 2024
Job No. 24160



Planting designer, landscape architect, horticulturalist

www.christinasilk.com.au

e: christina@christinasilk.com.au

p: 0409 604 464

Silk Consulting Landscape Architects P/L

