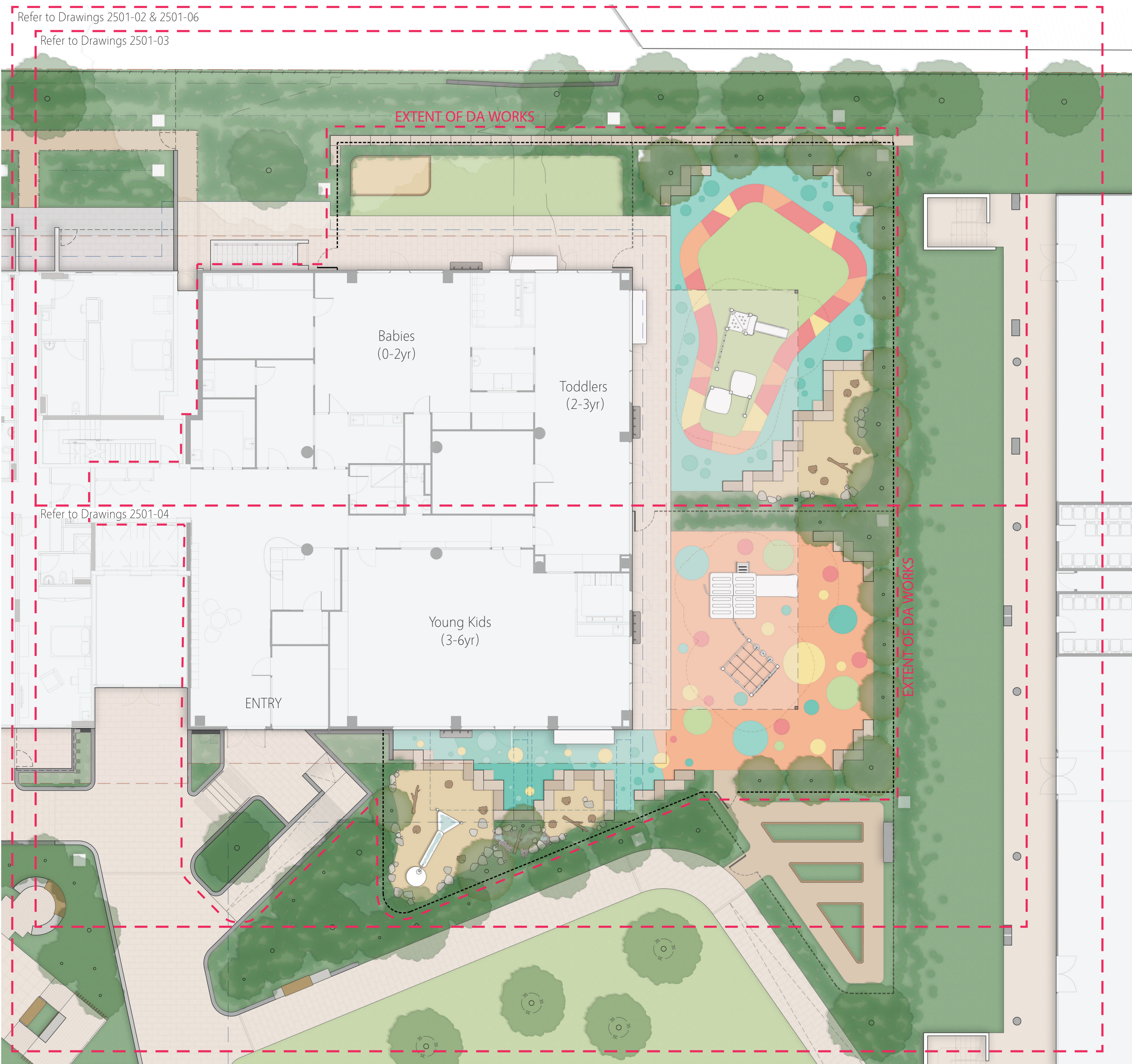


Frenchs Forest Headland Montessori | Landscape DA Package

5 Skyline Place, Frenchs Forest, NSW 2086



Extent of Landscape Works & Drawing Layout

Drawing Register:

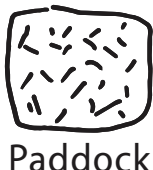
Drawing No.:	Drawing title:
2501-01	Titlesheet, Drawing Register, General Notes & Extent of Works Plan
2501-02	Overall Landscape DA Plan
2501-03	Design Intent Diagrams
2501-04	Landscape DA Plan1 of 2
2501-05	Landscape DA Plan 2 of 2
2501-06	Suggested Play Equipment & Materials
2501-07	Planting DA Plan
2501-08	Plant DA Schedule
2501-09	Maintenance Requirements & Management Plan
2501-10	Typical Planting Details
	Signage Plan & Typical Elevations
	Shade Plan

Project Information:

Client:	Headland Montessori c/o Platino Properties
Site:	Lot 101 in DP1209504, known as 5 Skyline Place, Frenchs Forest NSW 2086
LGA:	Northern Beaches Council
Landscape architect:	Paddock Landscape Architects
Architect:	PA Studio
Surveyor:	Norton Survey Partners
Arborist:	Naturally Trees

General Notes:

- + Not for construction or pricing.
- + Subject to detailed design and documentation.
- + Subject to Council approvals.
- + Refer to architectural documentation for all building works.
- + Refer to engineer documentation for all external services, including stormwater drainage, lighting, hydraulic etc.
- + All existing site levels within landscape softscape zones to be retained, unless otherwise documented.
- + Structures, fences, walls, water play, play equipment, balustrades, furniture etc subject to detailed design and engineering design.
- + Planting subject to availability at time of tender and construction.
- + Subject to playground review and certification by a suitably qualified playground consultant.
- + Subject to accessibility review and approval by a suitably qualified access consultant.
- + Indicative planting extent and setout documented - may vary onsite due to site conditions.
- + Construction works to include sediment and erosion control fencing along lower boundary to ensure all sediment runoff contained on-site.
- + Subject to accessibility consultant review and approval.
- + Subject to Bushfire Hazard review and approval.
- + Subject to playspace review and certification.



T 0413 445 096
E info@paddockstudio.com.au
G 46-52 Meagher Street
Chippendale NSW 2008
www.paddockstudio.com.au



Registered Landscape Architects
ALA 1761
ABN 82 628 312 274
ACN 628 312 274

Copyright Paddock Studio Pty Ltd 2018. Copyright in whole and every part belongs to Paddock Studio Pty Ltd. Not to be reproduced in any part without written agreement from Paddock Studio Pty Ltd.
Not for pricing or construction. Drawing to be read in conjunction with all relevant project and consultant documentation.

Issue:	Date:	Reason:	Reviewed by:
DRAFT	09.09.24	For Platino Review	DW
DRAFT	10.09.24	For Client Review	DW
A	23.09.24	For DA Submission	DW
B	26.11.24	For DA Submission	DW
C	11.07.25	For DA Submission	DW

Project: SKY 5 Stage 2 Childcare
5 Skyline Place, Frenchs Forest NSW
Client:

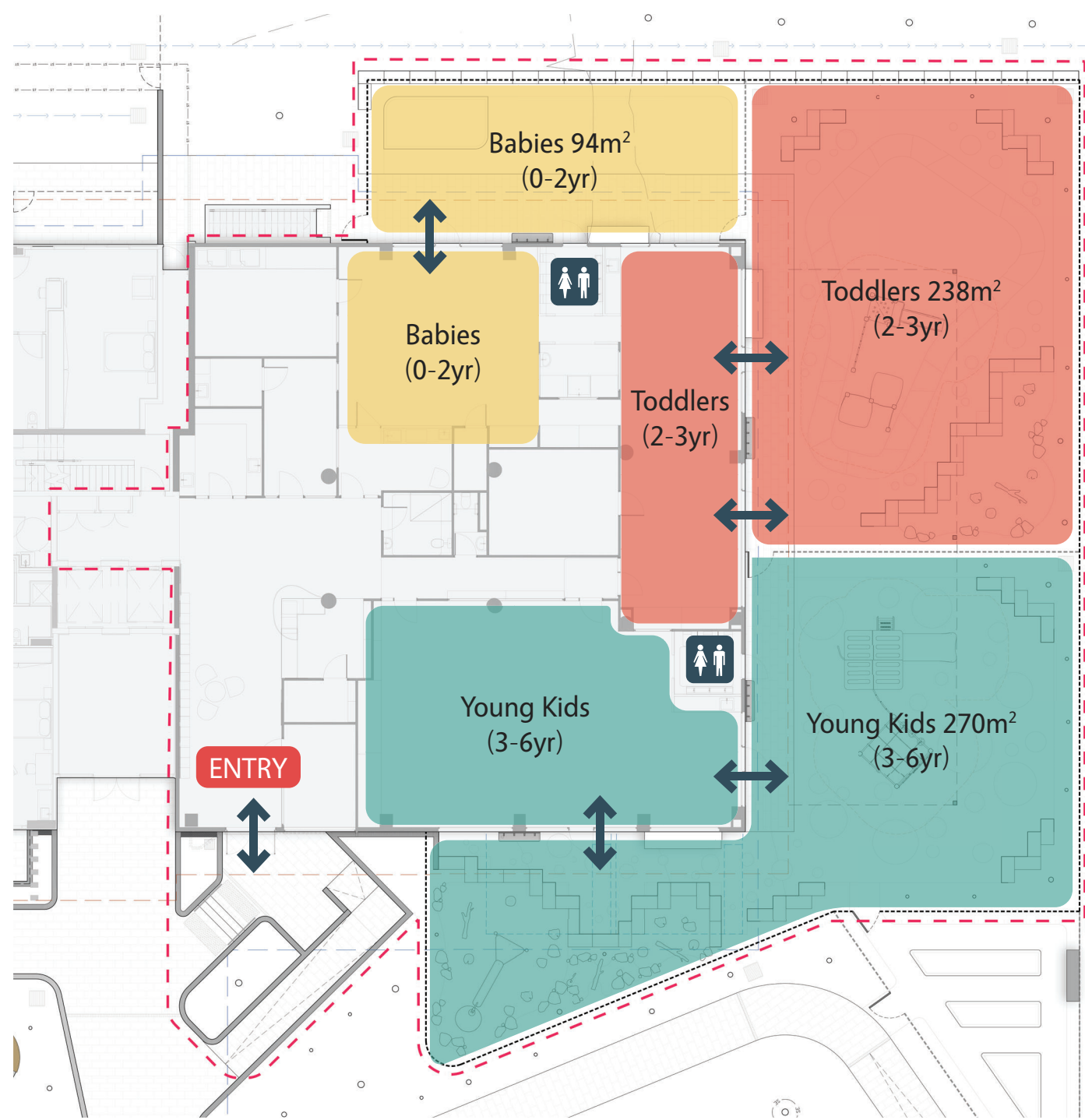
Title: **Titlesheet**
Drawing Register
General Notes
Extent of Works Plan

Project No.: 2501
Date: 11.07.2025
Scale: 1:150 @ A1



Drawing: 2501-01

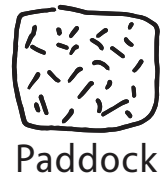
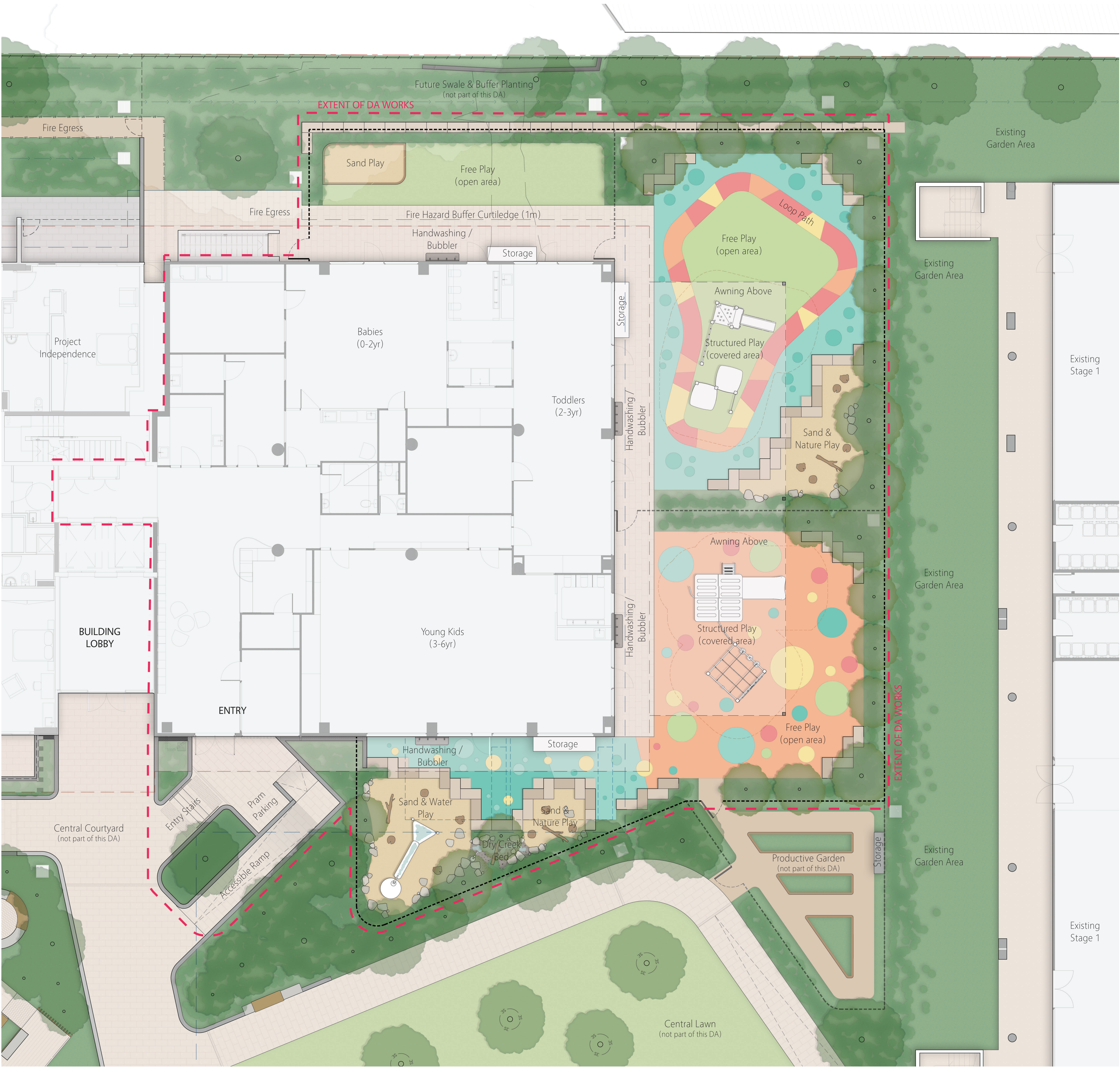
Issue: C



Age Groups



Play Opportunities



T 0413 445 096
E info@paddockstudio.com.au
G 46-52 Meagher Street
Chippendale NSW 2008
www.paddockstudio.com.au



Registered Landscape Architects
ALA 1761
ABN 82 628 312 274
ACN 628 312 274

Copyright Paddock Studio Pty Ltd 2018. Copyright in whole and every part belongs to Paddock Studio Pty Ltd. Not to be reproduced in any part without written agreement from Paddock Studio Pty Ltd.
Not for pricing or construction. Drawing to be read in conjunction with all relevant project and consultant documentation.

Issue:	Date:	Reason:
DRAFT	09.09.24	For Platino Review
DRAFT	10.09.24	For Client Review
A	23.09.24	For DA Submission
B	26.11.24	For DA Submission
C	11.07.25	For DA Submission

Reviewed by:
DW
DW
DW
DW

Project: SKY 5 Stage 2 Childcare
5 Skyline Place, Frenchs Forest NSW
Client:

Title: Overall Landscape DA Plan
Design Intent Diagrams

Project No.: 2501
Date: 11.07.2025
Scale: 1:100 @ A1



Drawing: 2501-02
Issue: C

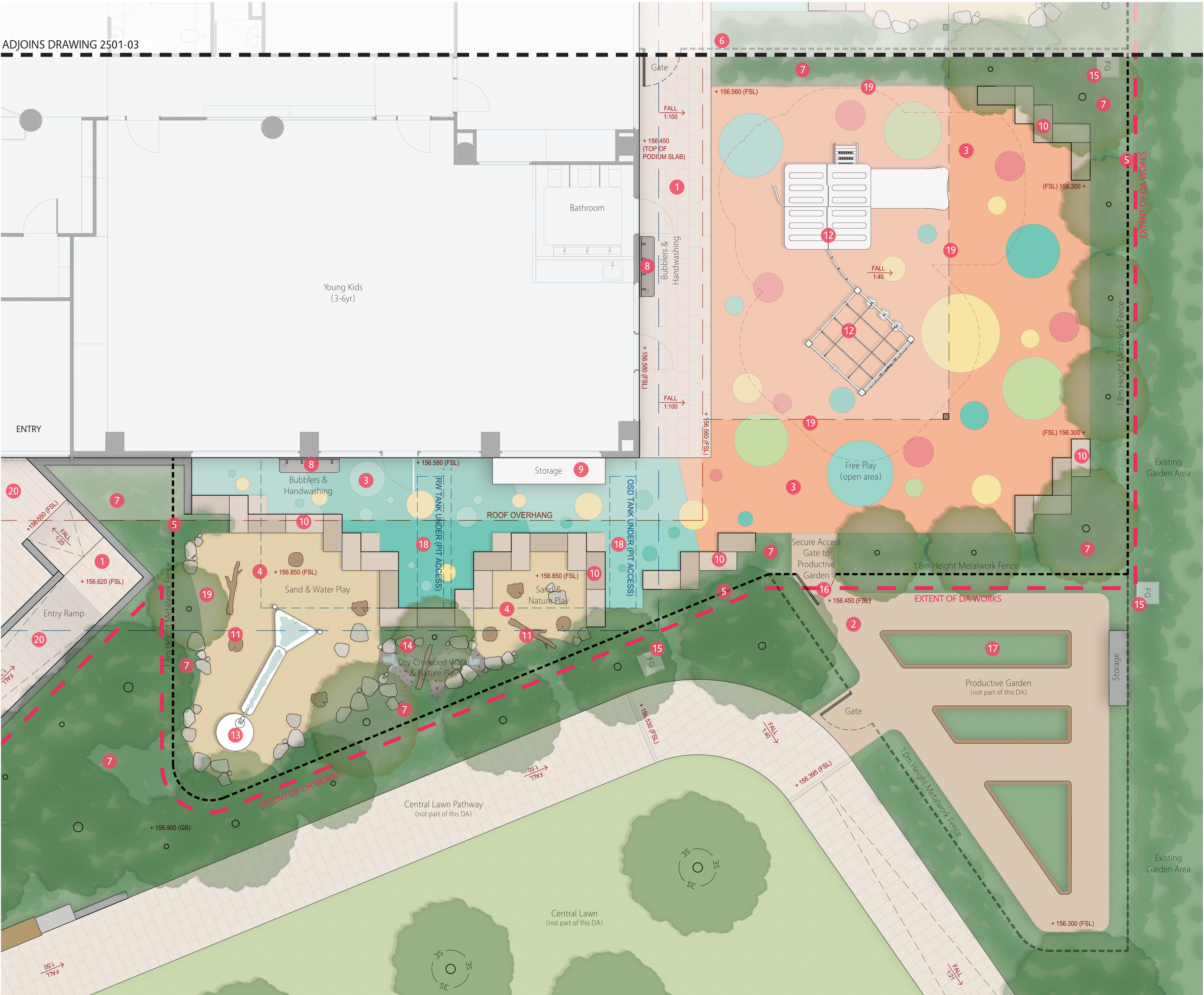
Legend:

- 1 Pavement Type 1: unit paving installed on mortar bedding and reinforced concrete base slab / podium slab.
- 2 Softfall Type 1: rubber softfall wearing layer on compliant softfall impact layer (depth to suit fall zone requirements). Colours and patterning layout indicative only.
- 3 Softfall Type 2: synthetic grass wearing layer on compliant softfall impact layer (depth to suit fall zone requirements).
- 4 Softfall Type 3: sand softfall impact layer (depth to suit fall zone requirements).
- 5 Fence Type 1: openstyle metalwork security fencing with powdercoated finish, 1800mm height.
- 6 Fence Type 2: openstyle metalwork internal fencing with powdercoated finish, 1000mm height.
- 7 Raised timber edge for sand play area, 300mm height. All gaps between to be infilled with mortar to ensure no entrapments. Ensure no sharps, gaps or finger entrapments with exposed edges rounded to 20mm (as per AS.4685.1:2021).
- 8 Garden Areas Type 1: cultivated subgrade, 300mm depth imported organic soil mix, 75mm depth imported organic mulch, mass planting.
- 9 Handwashing and bubbler combination station.
- 10 Storage area for play equipment.
- 11 Sandstone quarry log retaining edge. 1000x500x500mm A-grade sandstone quarry log with approximately 300-400mm exposed height, installed on compacted basecourse. All gaps between to be infilled with mortar to ensure no entrapments. Ensure no sharps, gaps or finger entrapments with exposed edges rounded to 20mm (as per AS.4685.1:2021).
- 12 Sandstone quarry log retaining wall. 1000x500x500mm A-grade sandstone quarry logs installed on compacted base course.
- 13 Timber nature play elements, such as logs, stumps etc installed within sand softfall areas. Ensure no sharps, gaps or finger entrapments with exposed edges rounded to 20mm (as per AS.4685.1:2021).
- 14 Play Equipment Type 1: Structured play equipment, such as Moduplay 'Pambula', installed to manufacturers specification. Fall zone extent indicated.
- 15 Stormwater field gully pits connected to broader site stormwater.
- 16 Fire egress from childcare to broader fire egress routes through site.
- 17 Existing buffer planting within swale (not part of DA works).
- 18 Existing retaining wall.
- 19 Existing trees within adjacent properties to be retained.
- 20 Awning extension from building to provide fixed shade around building edge.



Legend:

- 1 Pavement Type 1: unit paving installed on mortar bedding and reinforced concrete base slab / podium slab.
- 2 Pavement Type 2: stabilised and compacted decomposed granite gravel on compacted base course.
- 3 Softfall Type 1: rubber softfall wearing layer on compliant softfall impact layer (depth to suit fall zone requirements). Colours and patterning layout indicative only.
- 4 Softfall Type 3: sand softfall impact layer (depth to suit fall zone requirements).
- 5 Fence Type 1: openstyle metalwork security fencing with powdercoated finish, 1800mm height.
- 6 Fence Type 2: openstyle metalwork internal fencing with powdercoated finish, 1000mm height.
- 7 Garden Areas Type 1: cultivated subgrade, 300mm depth imported organic soil mix, 75mm depth imported organic mulch, mass planting.
- 8 Handwashing and bubbler combination station.
- 9 Storage area for play equipment.
- 10 Sandstone quarry log retaining edge. 1000x500x500mm A-grade sandstone quarry log with approximately 300-400mm exposed height, installed on compacted basecourse. All gaps between to be infilled with mortar to ensure no entrapments. Ensure no sharps, gaps or finger entrapments with exposed edges rounded to 20mm (as per AS.4685.1:2021).
- 11 Timber nature play elements, such as logs, stumps etc installed within sand softfall areas. Ensure no sharps, gaps or finger entrapments with exposed edges rounded to 20mm (as per AS.4685.1:2021).
- 12 Play Equipment Type 2: Structured play equipment, such as Moduplay 'Carrillo', installed to manufacturers specification. Fall zone extent indicated.
- 13 Play Equipment Type 3: Sand and water play equipment, such as Moduplay 'Avoca', installed to manufacturers specification.
- 14 Play Equipment Type 4: Dry creekbed with boulders, gravel and water pump, such as Moduplay 'Water Dispenser', installed to manufacturers specification.
- 15 Stormwater field gully pits connected to broader site stormwater.
- 16 Secure access gate to the productive garden direct from the childcare. Gate will not be used as entrance to the childcare, rather managed access to the productive garden only.
- 17 Productive garden with raised planters for vegetables, herbs etc (not part of DA works). Productive garden provides a space for managed interaction with residents.
- 18 Maintenance access pits to the OSD / rainwater tanks. Softfall infill pit lids.
- 19 Awning extension from building to provide fixed shade around building edge.
- 20 New compliant entry ramp and stairs from communal area to the childcare entry.





Play Equipment Type 1: Structured play equipment, such as Moduplay 'Pambula', installed to manufacturers specification. Fall zone extent indicated. Colour scheme indicative only.

Age Range:	1+
Activities:	11
Fall Height:	600-1500mm
Number of Users:	12
Play Value:	Agility, balance, slide, social play, strength



Play Equipment Type 2: Structured play equipment, such as Moduplay 'Carrillo', installed to manufacturers specification. Fall zone extent indicated. Colour scheme indicative only.

Age Range:	5+
Activities:	16
Fall Height:	2000mm
Number of Users:	20
Play Value:	Agility, climb, slide, social play, strength



Play Equipment Type 3: Sand and water play equipment, such as Moduplay 'Avoca', installed to manufacturers specification. Colour scheme indicative only.

Age Range:	1+
Activities:	3
Number of Users:	6
Play Value:	Sand and water play, social play, sensory



Play Equipment Type 4: Dry creekbed with boulders, gravel and water pump, such as Moduplay 'Water Dispenser', installed to manufacturers specification.

Age Range:	1+
Activities:	1
Play Value:	Nature and water play, social play, sensory



Timber nature play elements, such as logs, stumps etc installed within sand softfall areas.

Age Range:	1+
Play Value:	Agility, balance, social play, sand and nature play



Dry creek bed with boulders and water dispenser.

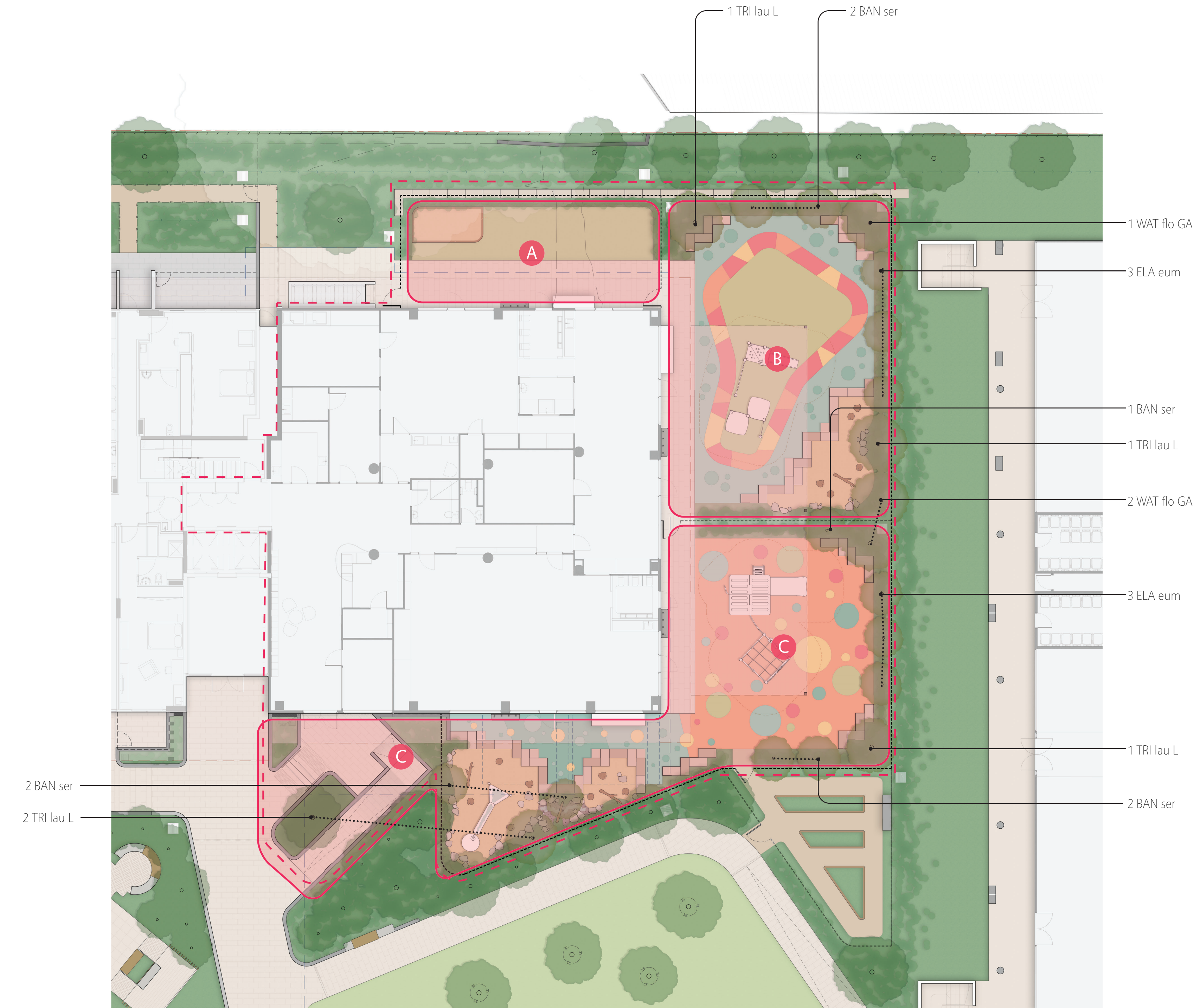
Age Range:	1+
Play Value:	Agility, balance, social play, water and nature play



Sandstone quarry logs form raised areas to contain sand play and provide informal play through the raised levels and varying heights of the sandstone blocks.



Fence Type 1 and 2: Metalwork fencing with vertical blades will match fencing used throughout the new development and provide an attractive and secure edge to the external spaces. Fence Type 1 is 1800mm height and will form the secure boundary to the external spaces. Fence Type 2 is 1000mm height and will form barriers between the external play spaces.



Area A

Plant Code:	Quantity:
Groundcovers:	
CAS gla CI	12
CHR api	12
DIC rep	30
GRE lan MT	5
VIO hed	30
Grasses, Ferns + Broad-leaved:	
ALP nut	7
ASP ela	7
BLE gib	5
DIA cae LJ	20
LIR mus EG	20
Shrubs:	
RHA ind SM	6
WES fru GB	6

Area B

Plant Code:	Quantity:
Groundcovers:	
CAS gla CI	18
CHR api	25
DIC arg SF	40
DIC rep	45
GRE lan MT	21
VIO hed	45
Grasses, Ferns + Broad-leaved:	
ALP nut	12
ALP zer	12
ANI BG	15
ASP aus	5
ASP ela	15
BLE gib	9
DIA cae LJ	35
DIA rev LR	25
DOO asp	12
DOR exc	5
LIR mus EG	35
POA lab E	15
Shrubs:	
COR alb	5
RHA ind SM	9
SYZ aus R	6
WES fru GB	12
Trees:	
BAN ser	2
ELA eum	3
TRI lau L	2
WAT flo GA	2

Area C

Plant Code:	Quantity:
Groundcovers:	
CAS gla CI	25
CHR api	35
DIC arg SF	50
DIC rep	55
GRE lan MT	30
VIO hed	55
Grasses, Ferns + Broad-leaved:	
ALP nut	15
ALP zer	12
ANI BG	12
ASP aus	5
ASP ela	18
BLE gib	12
DIA cae LJ	40
DIA rev LR	20
DOO asp	12
DOR exc	5
LIR mus EG	40
POA lab E	20
Shrubs:	
COR alb	7
RHA ind SM	12
SYZ aus R	9
WES fru GB	15
Trees:	
BAN ser	5
ELA eum	3
TRI lau L	3
WAT flo GA	1

Planting General Notes:

- + Refer to drawing 2501-07 for the Plant Schedule & Maintenance Notes/Requirements.
- + Planting design subject to detailed design. Not for pricing or construction.
- + All new deep soil garden areas subgrade to be cultivated prior to installation of new imported organic garden soil.
- + All new deep soil garden areas to include minimum 300mm depth of imported organic garden soil, mixed through existing site soil where possible.
- + All garden areas to be mulched with 75mm depth of imported organic garden mulch.
- + Sub-surface drainage to all garden areas, connected to site stormwater.
- + All garden areas planters to be irrigated with a fully automated drip-irrigation system, connected to the sites stormwater harvesting system. Irrigation system design subject to detailed design.

Planting DA Plan

Plant DA Schedule (to be read in conjunction with Planting DA Plan 2501-06):

Code	Scientific name:	Common name:	Pot size:	Mature height & spread*:	Planting density:	Quantity:	Maintenance Notes / Requirements:
	Groundcovers:						
CAS gla CI	Casuarina glauca 'Cousin It'	Sheoak	140mm Pot	0.2m x 0.3m	4 / m ²	45	Allow to cascade down face of retaining walls. Maintain to garden extent if it begins to encroach on paths.
CHR api	Chrysocephalum apiculatum	Yellow Buttons	140mm Pot	0.2m x 0.3m	6 / m ²	72	Seasonal maintenance to promote new growth. Maintain to garden extent if it begins to encroach on paths.
DIC arg SF	Dichondra argentea 'Silver Falls'	Silver Falls	140mm Pot	0.1m x 0.3m	6 / m ²	90	Allow to cascade down face of retaining walls. Maintain to garden extent if it begins to encroach on paths.
DIC rep	Dichondra repens	Kidney Groundcover	90x90x50mm	0.1m x 0.3m	6 / m ²	130	Allow to form a natural weed-cover within garden areas.
GRE lan MT	Grevillea lanigera 'Mt Tamboritha'	Spider Flower	140mm Pot	0.2m x 0.5m	4 / m ²	56	Seasonal maintenance to promote new growth. Maintain to garden extent if it begins to encroach on paths.
VIO hed	Viola hederacea	Native Violet	90x50x50mm	0.1m x 0.3m	6 / m ²	130	Allow to form a natural weed-cover within garden areas.
	Grasses, Ferns + Broad-leaved:						
ALP nut	Alpinia nutans	Dwarf Cardamon	200mm Pot	1m x 0.8m	3 / m ²	34	Seasonal maintenance as required to remove dead foliage.
ALP zer	Alpinia zerumbet	Shell Ginger	200mm Pot	1.8m x 1m	2 / m ²	24	Seasonal maintenance as required to remove dead foliage.
ANI BG	Anigozanthos 'Bush Gold'	Kangaroo Paw	140mm Pot	0.6m x 0.6m	5 / m ²	27	Seasonal maintenance as required to remove dead flowers and promote new growth.
ASP aus	Asplenium australasicum	Birds Nest Fern	200mm Pot	1m x 1m	1 / m ²	17	Seasonal maintenance as required to remove dead foliage.
ASP ela	Aspidistra elatior	Cast Iron Plant	200mm Pot	0.6m x 0.6m	4 / m ²	33	Seasonal maintenance as required to remove dead foliage.
BLE gib	Blechnum gibbum	Silver Lady Fern	140mm Pot	0.4m x 0.4m	4 / m ²	26	Seasonal maintenance as required to remove dead foliage.
DIA cae LJ	Dianella caerulea 'Little Jess'	Blue Flax Lily	140mm Pot	0.4m x 0.4m	5 / m ²	95	
DIA rev LR	Dianella revoluta 'Little Rev'	Blue Flax Lily	140mm Pot	0.4m x 0.4m	5 / m ²	45	
DOO asp	Doodia aspera	Rasp Fern	140mm Pot	0.4m x 0.4m	5 / m ²	24	Seasonal maintenance to promote new growth.
DOR exc	Doryanthes excelsa	Gymea Lilly	200mm Pot	1.5m x 1m	1 / m ²	10	Seasonal maintenance to remove dead flowers.
LIR mus EG	Liriope muscari 'Evergreen Giant'	Giant Mondo	140mm Pot	0.6m x 0.6m	5 / m ²	95	
POA lab E	Poa labillardieri 'Eskdale'	Common Tussock Grass	140mm Pot	0.6m x 0.6m	5 / m ²	35	Seasonal maintenance to promote new growth.
	Shrubs:						
COR alb	Correa alba	White Correa	200mm Pot	1.5m x 1.5m	1 / m ²	12	Seasonal maintenance as required to maintain compact form 1x1m.
RHA ind SM	Rhaphiolepis indica 'Snow Maiden'	Indian Hawthorn White	200mm Pot	0.8m x 0.8m	3 / m ²	27	Seasonal maintenance as required to maintain compact form 800x800mm.
SYZ aus R	Syzygium australe 'Resilience'	Lilly Pilly	25L	2m x 1.5m	1 / m ²	15	Seasonal maintenance as required to maintain informal screen to 1.8-2m height by 800mm spread.
WES fru GB	Westringia fruticosa 'Grey Box'	Coastal Rosemary	200mm Pot	0.4m x 0.4m	4 / m ²	33	Seasonal maintenance as required to maintain compact form 400x400mm.
	Trees:						
BAN ser	Banksia serrata	Old Man Banksia	45L	6m x 3m	-	7	Seasonal maintenance as required. Maintain compact form 2-3m height by 2m spread with clear trunk 1.5m height.
ELA eum	Elaeocarpus eumundii	Quandong	75L	8m x 3m	-	6	Seasonal maintenance as required. Maintain clear trunk 1.5m height.
TRI lau L	Tristaniopsis laurina 'Luscious'	Water Gum	75L	8m x 4m	-	5	Seasonal maintenance as required.
WAT flo GA	Waterhousea floribunda 'Green Avenue'	Weeping Lilly-pilly	75L	12m x 8m	-	3	Seasonal maintenance as required.

Notes:

- + * Nominal height / spread at maturity - will vary based on maintenance regimes and site growing conditions.
- + Planting design subject to detailed design and documentation.
- + Species selection subject to availability at time of tendering and construction.



CAR gla CI: Casuarina glauca 'Cousin It'



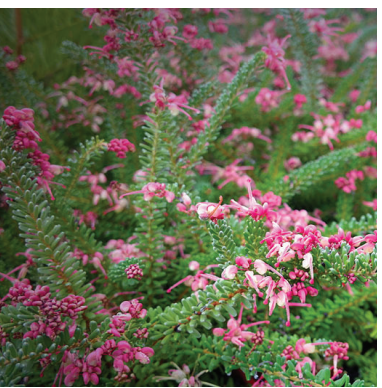
CHR api: Chrysocephalum apiculatum



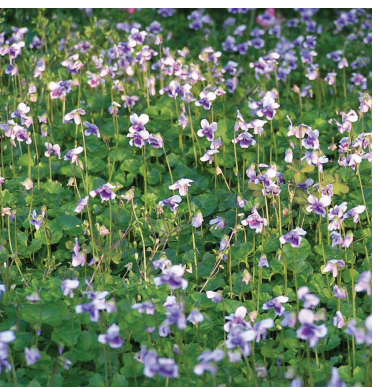
DIC arg SF: Dichondra argentea 'Silver Falls'



DIC rep: Dichondra repens



GRE lan MT: Grevillea lanigera 'Mt Tamboritha'



VIO hed: Viola hederacea



ALP nut: Alpinia nutans



ALP zer: Alpinia zerumbet



ANI BG: Anigozanthos 'Bush Gold'



ASP aus: Asplenium australasicum



ASP ela: Aspidistra elatior



BLE gib: Blechnum gibbum



DIA cae LJ: Dianella caerulea 'Little Jess'



DIA rev LR: Dianella revoluta 'Little Rev'



DOO asp: Doodia aspera



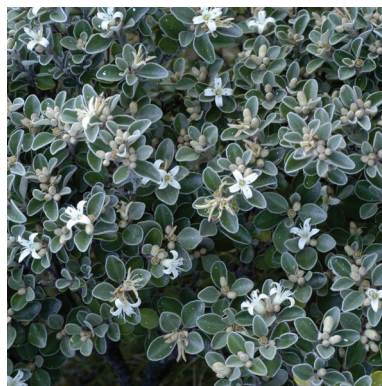
DOR exc: Doryanthes excelsa



LIR mus EG: Liriope muscari 'Evergreen Giant'



POA lab E: Poa labillardieri 'Eskdale'



COR alb: Correa alba



RHA ind SM: Rhaphiolepis indica 'Snow Maiden'



SYZ aus R: Syzygium australe 'Resilience'



WES fru GB: Westringia fruticosa 'Grey Box'



BAN ser: Banksia serrata



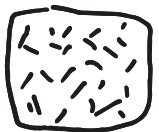
ELA eum: Elaeocarpus eumundii



TRI lau L: Tristaniopsis laurina 'Luscious'



WAT flo GA: Waterhousea floribunda 'Green Avenue'



T 0413 445 096
E info@paddockstudio.com.au
G 46-52 Meagher Street
Chippendale NSW 2008
www.paddockstudio.com.au



Registered Landscape Architects
ALIA 1761
ABN 82 628 312 274
ACN 628 312 274

Copyright Paddock Studio Pty Ltd 2018. Copyright in whole and every part belongs to Paddock Studio Pty Ltd. Not to be reproduced in any part without written agreement from Paddock Studio Pty Ltd.
Not for pricing or construction. Drawing to be read in conjunction with all relevant project and consultant documentation.

Issue:	Date:	Reason:	Reviewed by:
DRAFT	09.09.24	For Platino Review	DW
DRAFT	10.09.24	For Client Review	DW
A	23.09.24	For DA Submission	DW
B	26.11.24	For DA Submission	DW
C	11.07.25	For DA Submission	DW

Project: SKY 5 Stage 2 Childcare
5 Skyline Place, Frenchs Forest NSW
Client:

Title: Plant DA Schedule
1 of 2

Project No.: 2501
Date: 11.07.2025
Scale: N/A @ A1

Drawing: 2501-07
Issue: C

Maintenance Requirements & Management Plan:

General:

The landscape works shall be maintained for the full life of the landscape. The frequency of maintenance shall occur every fortnight and works include, but are not limited to, watering, weeding, pruning, rubbish removal, fertilising, pest and disease control, plant replacement and the like.

Ensure the general appearance and presentation of the landscape and the quality of plant material at date of installation is maintained for the full life of the landscape.

Prune to AS4373 and the pruning requirements as outlined within the Plant Schedule on drawing 1916-014 and 1916-015.

Fertilising:

Fertiliser shall be an approved prolonged release type, such as 'native plant food + t/e' as supplied by Patons or approved equivalent with a N:P:K:S ratio of 7.9:1.8:5.2(s/p): 8.7 applied at the rate specified by the manufacturer. Apply all-purpose fertiliser to mass planting areas annually in two bands and cultivated into the soil 100 mm deep.

Season: fertilise all planting in September and March according to their seasonal growth requirement.

Insect & Disease Control:

Insecticide and fungicide spraying, if considered necessary, shall be carried out in accordance with the manufacturer's instructions. The maintenance contractor shall treat all occurrences of insect attack or disease in plant material.

Period for treatment: until the problem has been eliminated.

Chemical spray: avoid windy days or if rain is likely to follow within 12 hours. Apply to the manufacturer's instructions and material data and safety sheets.

Weeding:

Weeds are unwanted plants and grasses not planted as part of the original works.

Program: as required for planted and mulched areas to be weed free when observed at fortnightly maintenance intervals.

Method: clear and keep clear vigorous ground covers 200 mm from the base of any large shrub, palm or tree. To be completed by hand.

Herbicide application: avoid windy days or if rain is likely to follow within 12 hours. Apply to the manufacturer's instructions and material data and safety sheets. Apply when the weather is humid with moderate temperatures and maximum sunlight. Apply when the ground has the recommended soil moisture.

Stakes & Ties:

Adjust and/or replace stakes and ties where required. Remove all stakes ties when the planting has fully established and is self-supporting.

Generally, if plants are unable to be self-supported or if stakes are damaged, stake or re-stake the plants as required.

Removal: if plants are robust with well-developed systems and are strong enough to no longer require support, remove stakes and ties.

Mulched areas:

Maintain mulched areas in a clean and tidy condition. Reinstate mulch to specified depths and extents. The maintenance contractor is to allow to top up all mulch areas at least once every three months.

Depth: maintain a minimum depth of 75mm for organic mulch. Maintain the original ground levels around the base of plants.

Watering:

Watering program: minimum three complete waterings, soaking to a depth of 150 mm at fortnightly intervals for the first 6 weeks of plant establishment irrespective of natural rainfall. Mass planted areas including trees shall be watered regularly with an even deeply penetrating application to ensure continuous healthy growth. Avoid frequent dampening of the surface. Allow the surface of the soil to partially dry out between waterings.

Water quality: ph between 5.5 and 7.5. Total soluble salts less than 1000 mg/litre. No substances that would be toxic to plant growth.

Water restrictions: coordinate the water supply and confirm the watering regime against state and territory legislation and restrictions at the time.

Irrigation:

Drip irrigation system for all gardens, connected to the site stormwater harvesting system. Regularly inspect the irrigation system to ensure it is functioning appropriately as per the manufacturers requirements.

Replacement planting:

Immediately replace plants, which die or fail to thrive or are damaged or stolen, with plants of same size and quality unless otherwise directed. All planters are located within compliant accessible terraces.

Waste removal:

Remove all green waste and general waste from ongoing maintenance inspections via the building waste management system. Green waste is to be disposed in appropriate green waste systems for recycling. Any large limbs of foliage that is removed is to be broken down to a manageable size and disposed as required via the building waste management system

Completion:

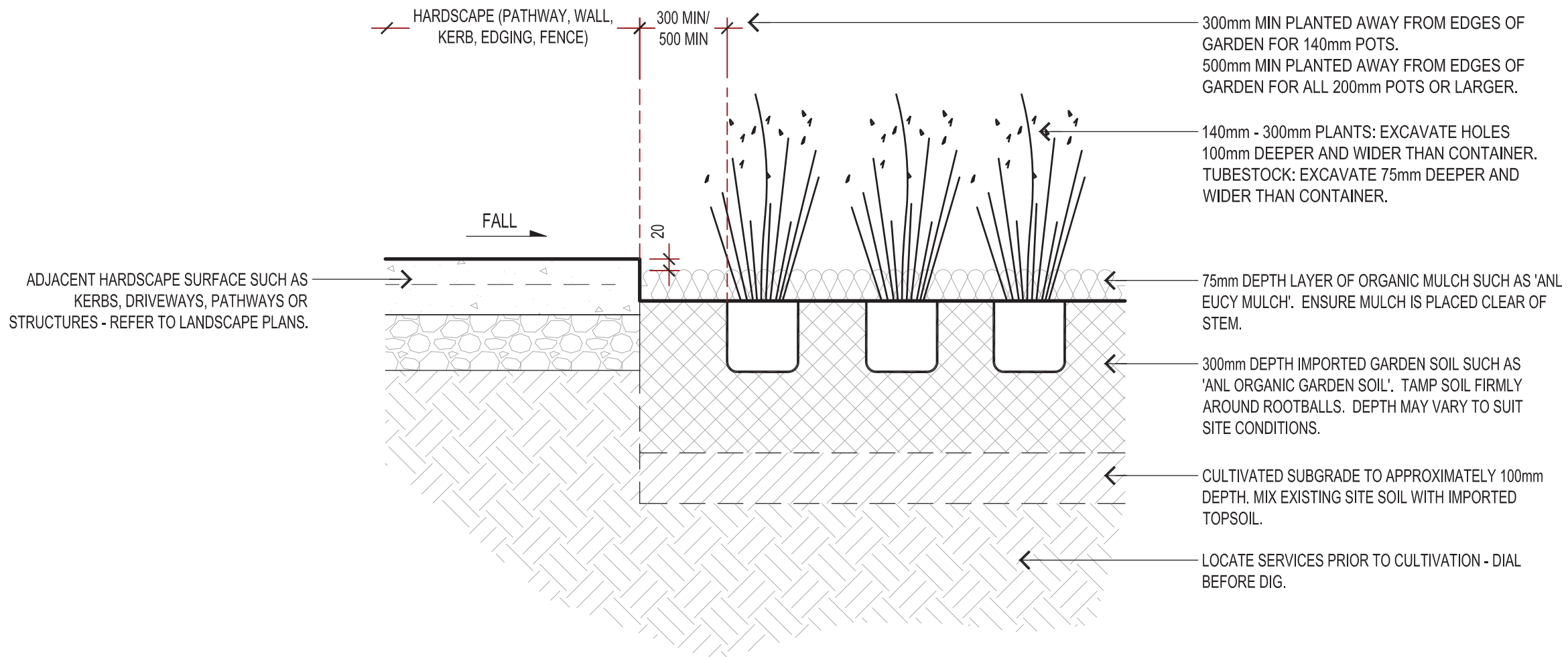
Generally: plant maintenance period shall be deemed complete, subject to the following:

- + Repairs to planting media completed.
- + Pests, disease, or nutrient deficiencies or toxicities are not evident.
- + Organic and rock mulched surfaces have been maintained in a weed free and tidy condition and to the specified depth.
- + Vegetation is established and well formed.
- + Plants have healthy root systems that have penetrated into the surrounding, undisturbed ground and not able to be lifted out of its planting hole.
- + Collection and removal of litter.
- + Removal of mulch from drainage and access areas.

Immediately replace plants, which die or fail to thrive or are damaged or stolen, with plants of same size and quality unless otherwise directed. In the case of stolen or vandalised plants the contractor will be required to replace the plants a maximum of once for each plant.

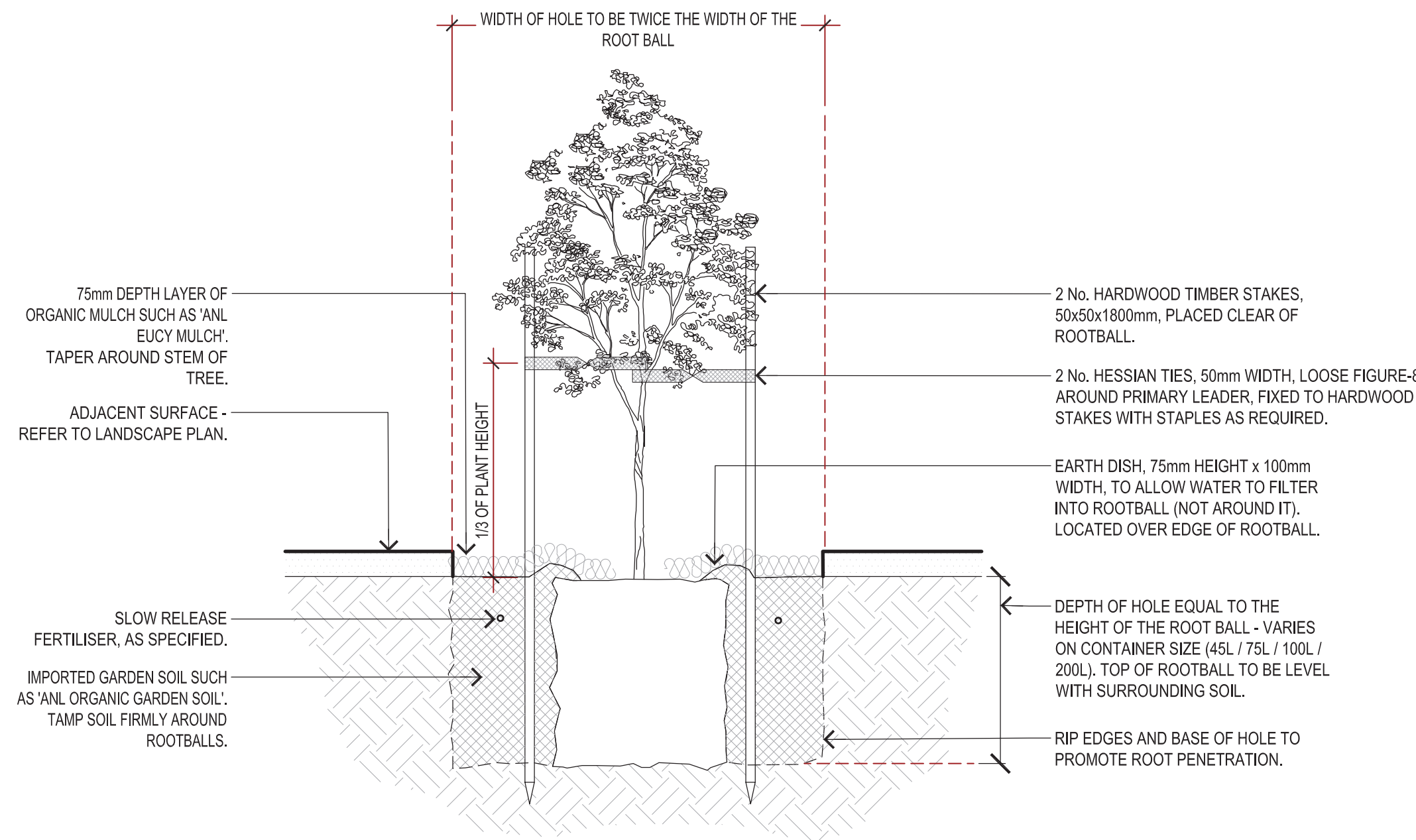
Plant establishment compliance table:

Plant material:	Acceptable failure per area:	Acceptable concentration of failure:
Tube stock	< 10%	< 15% in any given location
140-200mm	< 5%	< 15% in any given location
300 mm or larger	< nil%	nil %



Mass Planting (Deep soil) - Typical Detail:

Scale: 1:10 @A1



Tree Planting (Deep soil) - Typical Detail:

Scale: 1:20 @A1



T 0413 445 096
E info@paddockstudio.com.au
G 46-52 Meagher Street
Chippendale NSW 2008

www.paddockstudio.com.au



Registered Landscape Architects
ALA 1761
ABN 82 628 312 274
ACN 628 312 274

Copyright Paddock Studio Pty Ltd 2018. Copyright in whole and every part belongs to Paddock Studio Pty Ltd. Not to be reproduced in any part without written agreement from Paddock Studio Pty Ltd.

Not for pricing or construction. Drawing to be read in conjunction with all relevant project and consultant documentation.

Issue:	Date:	Reason:
DRAFT	09.09.24	For Platino Review
DRAFT	10.09.24	For Client Review
A	23.09.24	For DA Submission
B	26.11.24	For DA Submission
C	11.07.25	For DA Submission

Reviewed by:	DW
	DW
	DW
	DW

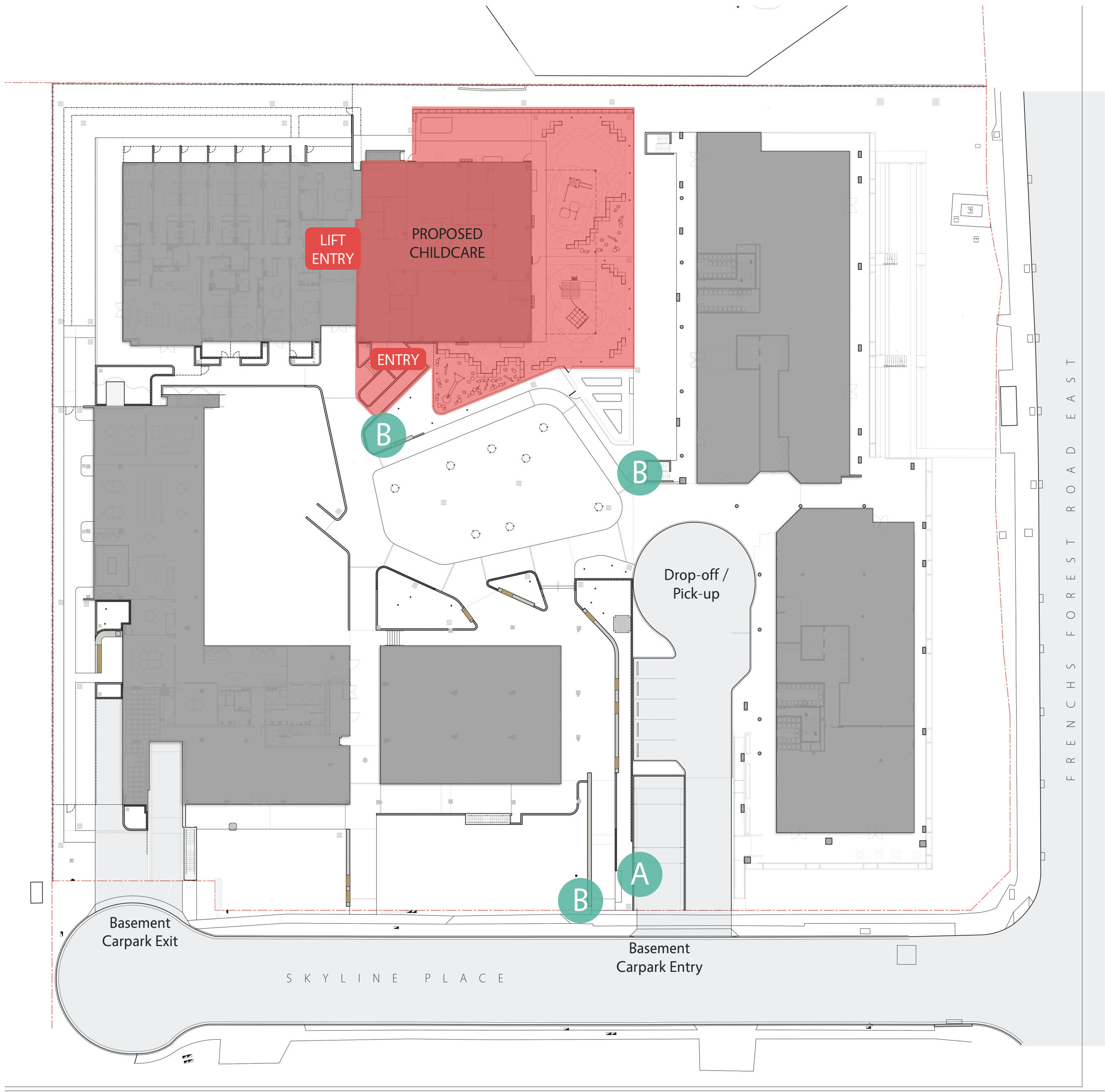
Project: SKY 5 Stage 2 Childcare
5 Skyline Place, Frenchs Forest NSW
Client:

Title: Maintenance Requirements & Management Plan
Typical Planting Details

Project No.: 2501
Date: 11.07.2025
Scale: As shown @ A1

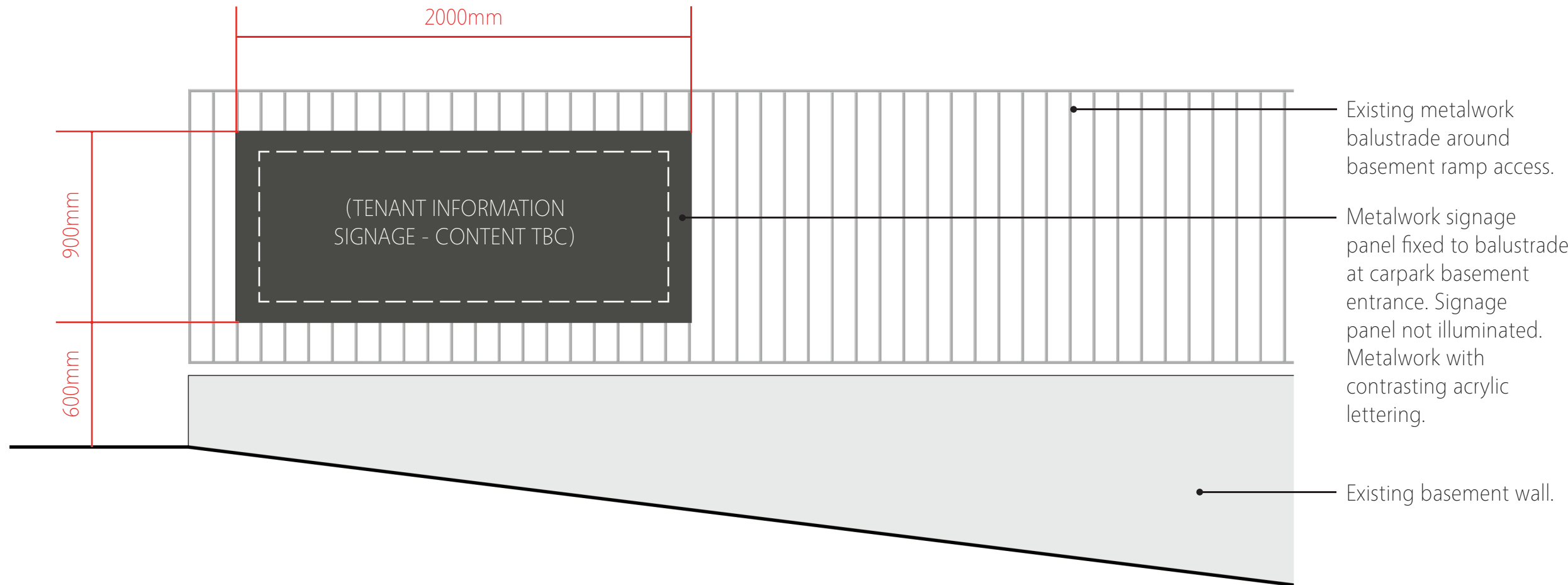
Drawing: 2501-08

Issue: C



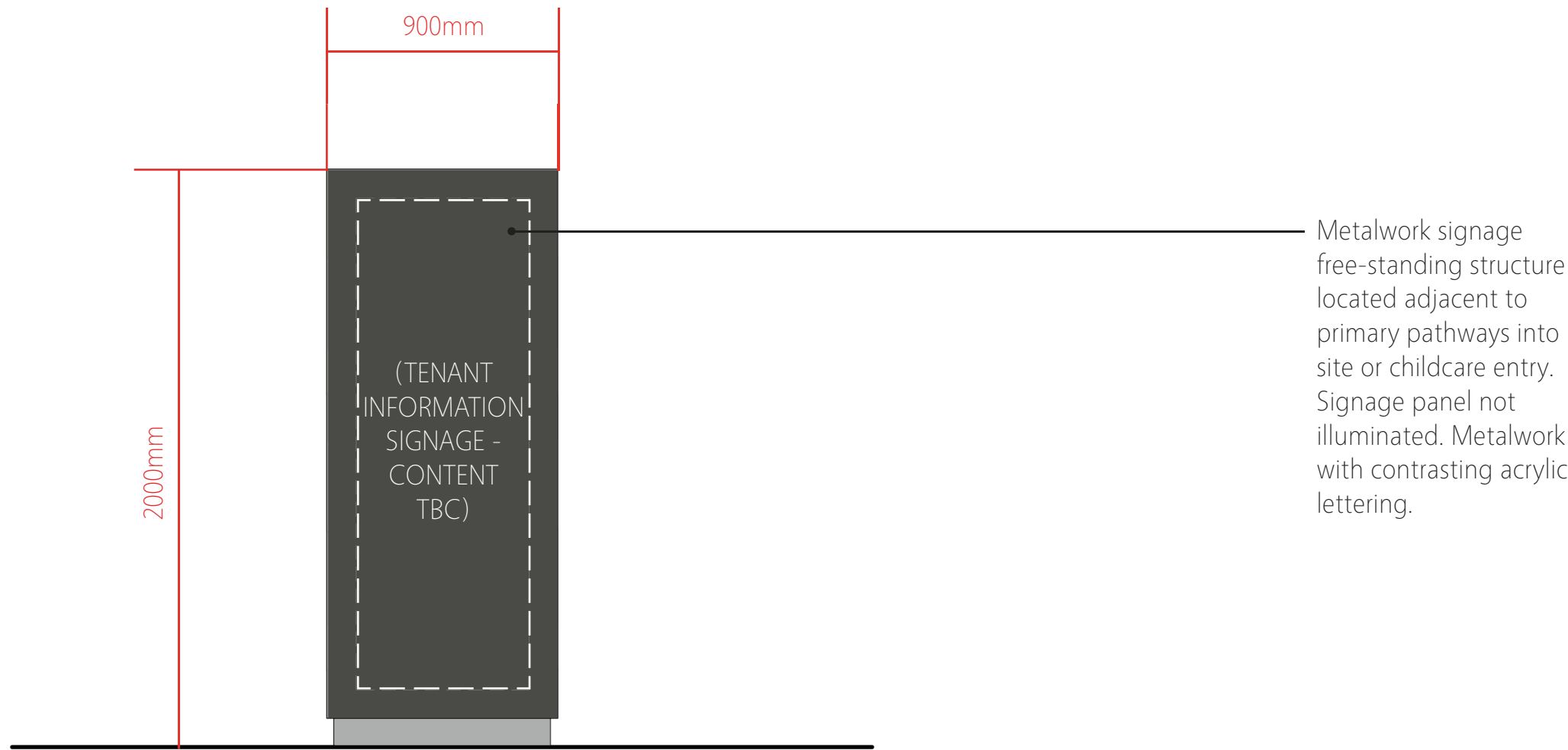
Signage Location Plan

Scale: 1:400 @A1



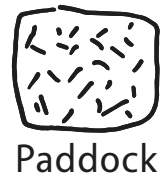
Type A - Directional Signage (vehicular) - Located at the Basement Carpark Entrance

Scale: 1:20 @A1



Type B - Directional Signage (pedestrian) - Located at Pedestrian Entrances

Scale: 1:20 @A1



T 0413 445 096
E info@paddockstudio.com.au
G 46-52 Meagher Street
Chippendale NSW 2008
www.paddockstudio.com.au



Registered Landscape Architects
AILA 1761
ABN 82 628 312 274
ACN 628 312 274

Copyright Paddock Studio Pty Ltd 2018. Copyright in whole and every part belongs to Paddock Studio Pty Ltd. Not to be reproduced in any part without written agreement from Paddock Studio Pty Ltd.
Not for pricing or construction. Drawing to be read in conjunction with all relevant project and consultant documentation.

Issue:	Date:	Reason:
DRAFT	09.09.24	For Platino Review
DRAFT	10.09.24	For Client Review
A	23.09.24	For DA Submission
B	26.11.24	For DA Submission
C	11.07.25	For DA Submission

Reviewed by:
DW
DW
DW
DW

Project: SKY 5 Stage 2 Childcare
5 Skyline Place, Frenchs Forest NSW
Client:

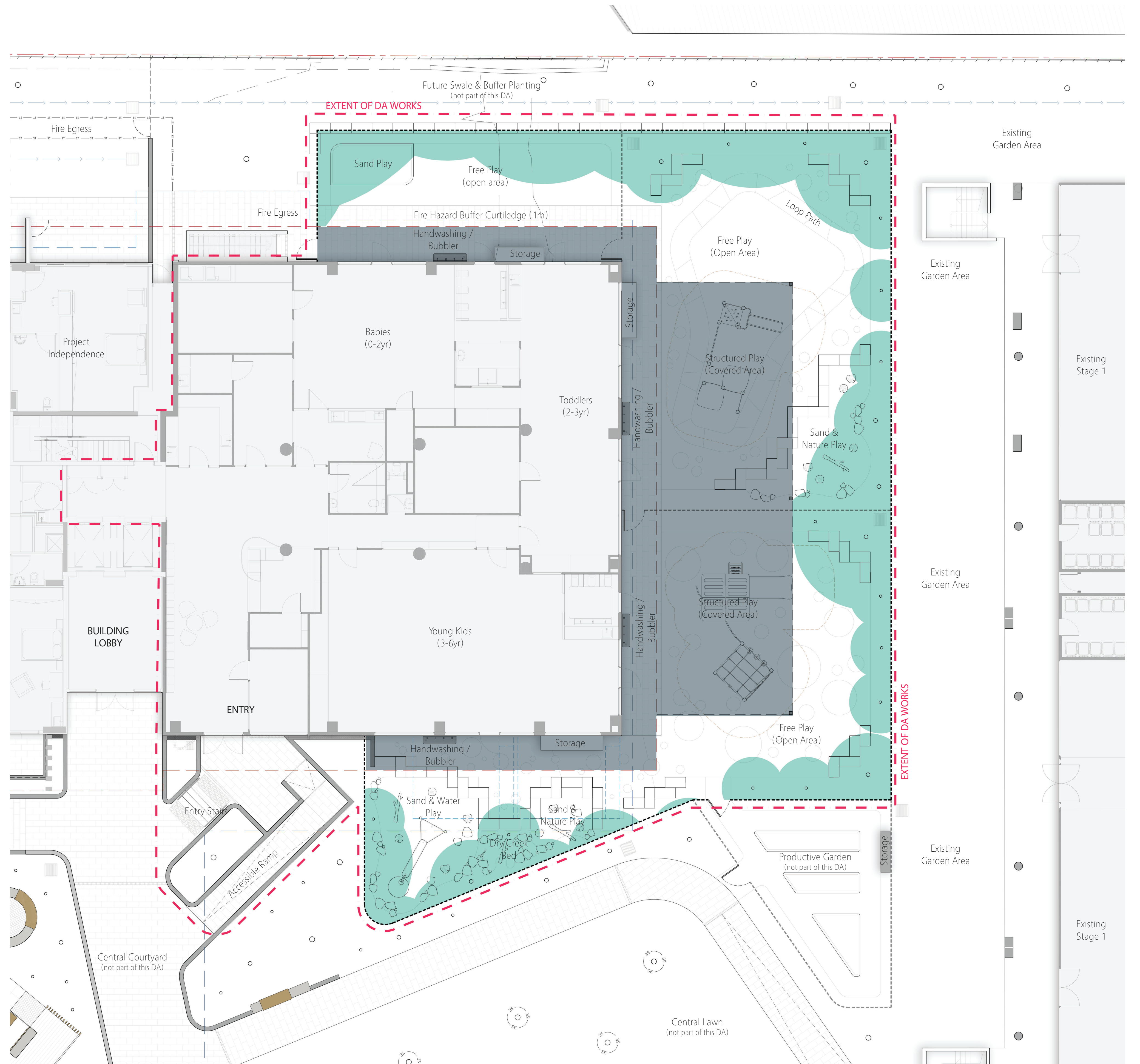
Title: Signage Plan & Typical Elevations

Project No.: 2501
Date: 11.07.2025
Scale: As shown @ A1



Drawing: 2501-09

Issue: C



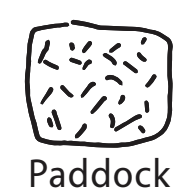
Legend:

- Natural shade provided by tree canopies. Tree canopies shown at maturity, including shading from existing and proposed trees within the adjacent property.
- Fixed shade provided by either the building overhang, building awning or shade sails.

Area Calculations:

External Site Area = 602 m²
Natural Shade = 176 m²
Fixed Shade = 227 m²

Total shade provided = 403 m² (67%)



T 0413 445 096
E info@paddockstudio.com.au
G 46-52 Meagher Street
Chippendale NSW 2008
www.paddockstudio.com.au



Registered Landscape Architects
ALA 1761
ABN 82 628 312 274
ACN 628 312 274

Copyright Paddock Studio Pty Ltd 2018. Copyright in whole and every part belongs to Paddock Studio Pty Ltd. Not to be reproduced in any part without written agreement from Paddock Studio Pty Ltd.
Not for pricing or construction. Drawing to be read in conjunction with all relevant project and consultant documentation.

Issue:	Date:	Reason:
DRAFT	09.09.24	For Platino Review
DRAFT	10.09.24	For Client Review
A	23.09.24	For DA Submission
B	26.11.24	For DA Submission
C	11.07.25	For DA Submission

Reviewed by:
DW
DW
DW
DW

Project: SKY 5 Stage 2 Childcare
5 Skyline Place, Frenchs Forest NSW
Client:

Title: Shade Plan

Project No.: 2501
Date: 11.07.2025
Scale: 1:100 @ A1



Drawing:	Issue:
2501-010	C