

LEGEND:

- DES 7.080 X PROPOSED DESIGN SPOT LEVEL
EX 7.080 X EXISTING SURFACE SPOT LEVEL
REFER SURVEY PLANS TO BE
CONFIRMED PRIOR TO CONSTRUCTION.
CHAINAGES
PROPOSED DRIVEWAY/FOOTPATH OUTLINE

NOTES:

- EXISTING CONTOURS AND LEVELS. REFER SURVEY PLAN. ALL LEVELS AND DIMENSIONS TO BE CONFIRMED PRIOR TO CONSTRUCTION.
- PRIOR APPROVAL MAY BE REQUIRED WITH RELEVANT AUTHORITIES PRIOR TO RETAINING WALLS, SHORING, BATTERS & DRAINAGE IMPACTING NEIGHBORING PROPERTIES AND INFRASTRUCTURE BEYOND BOUNDARIES.
- STORMWATER AND DRAINAGE REFER STORMWATER MANAGEMENT PLANS DRAWINGS BY NB CONSULTING PTY LTD.
- ALL BATTERS, RETAINING WALLS AND BULK EARTHWORKS TO FUTURE DETAILS BY OTHERS. ALL RETAINING WALLS GREATER THAN 900mm HIGH TO BE DESIGNED BY A QUALIFIED ENGINEER.
- EXISTING DRAINAGE ACROSS NATURE STRIP & KERBS IMPACTING PROPOSED WORKS TO BE RELOCATED AS REQUIRED BY OTHERS IN AN APPROVED MANNER.
- NATURE STRIP PAVEMENT, GUTTER & FOOTWAY CROSSINGS TO COUNCIL SPECIFICATIONS.
- CONCRETE DRIVEWAY & JOINTING PLAN BY OTHERS.
- IMPACT OF PROPOSED WORKS ON EXISTING TREE/S. REFER ARCHITECT AND/OR ARBORIST REPORT FOR DETAILS AND SPECIFICATIONS.
- PRIOR APPROVAL REQUIRED PRIOR TO REMOVAL OF EXISTING TREE/S REFER ARCHITECT AND/OR ARBORIST REPORT FOR SPECIFICATIONS & DETAILS.
- CARPARKING REQUIREMENTS TO AS2890.1 BY OTHERS. REFER ARCHITECT FOR SPECIFICATIONS AND DETAILS.
- MINIMUM DRIVEWAY WIDTHS, CLEARANCES, INCLUDING HEAD CLEARANCES TO COMPLY WITH AS2890.1 REFER ARCHITECT FOR SPECIFICATIONS & DETAILS.
- GARAGE DOORWAY OPENING WIDTH BY OTHERS REFER ARCHITECTS FOR SPECIFICATIONS AND DETAILS TO COMPLY WITH AS2890.1.
- TRAFFIC CONTROL SIGNAGE AND TRAFFIC CONTROL MEASURES BY OTHERS.
- LINE AND MARKINGS BY OTHERS TO CONFORM TO MAIN ROADS 'MANUAL OF UNIFORM TRAFFIC CONTROL DEVICES'.
- REFER ARCHITECT FOR LATEST PLANS AND EXTENTS OF PROPOSED BUILDING WORKS & STRUCTURES. TO BE CONFIRMED PRIOR TO CONSTRUCTION.
- COUNCIL APPROVAL MAY BE REQUIRED PRIOR TO COMMENCING CONSTRUCTION.
- ANY VEHICLE PROFILE ANALYSIS SUCH AS THE S85 PROFILE IS NORMALLY UNDERTAKEN ALONG THE DETAILED LONGITUDINAL SECTIONS, WHICH HAVE GENERALLY BEEN LOCATED IN ACCORDANCE WITH COUNCIL POLICY. THIS MAY NOT NECESSARILY REPRESENT THE WORSE CASE ANALYSIS.
- NO SWEEP PATH ANALYSIS HAS BEEN UNDERTAKEN AND/OR HAS BEEN PROVIDED FOR THIS DEVELOPMENT.
- BARRIERS REQUIRED WHERE DRIVEWAY DROP EXCEEDS 600mm. WHEEL STOP REQUIRED WHERE DRIVEWAY DROP IS BETWEEN 150-600mm. REFER AS2890.1. REFER ARCHITECT & LANDSCAPE ARCHITECT FOR SPECIFICATIONS AND DETAILS.
- BOUNDARY OUTLINES REFER ARCHITECT FOR LATEST PLANS AND EXTENTS.

www.dialbeforeyoudig.com.au



NO INVESTIGATION OF UNDERGROUND SERVICES HAS BEEN MADE. ALL RELEVANT AUTHORITIES SHOULD BE NOTIFIED PRIOR TO ANY EXCAVATION ON OR NEAR THE SITE.

DEVELOPERS & EXCAVATORS MAY BE HELD FINANCIALLY RESPONSIBLE BY THE ASSET OWNER SHOULD THEY DAMAGE UNDERGROUND NETWORKS.

- CARELESS DIGGING CAN:
- CAUSE DEATH OR SERIOUS INJURY TO WORKERS AND THE GENERAL PUBLIC
 - INCONVENIENCE USERS OF ELECTRICITY, GAS, WATER AND COMMUNICATIONS
 - LEAD TO CRIMINAL PROSECUTION AND DAMAGES CLAIMS
 - CAUSE EXPENSIVE FINANCIAL LOSSES TO BUSINESS
 - CUT OFF EMERGENCY SERVICES
 - DELAY PROJECT COMPLETION TIMES WHILE THE DAMAGE IS REPAIRED

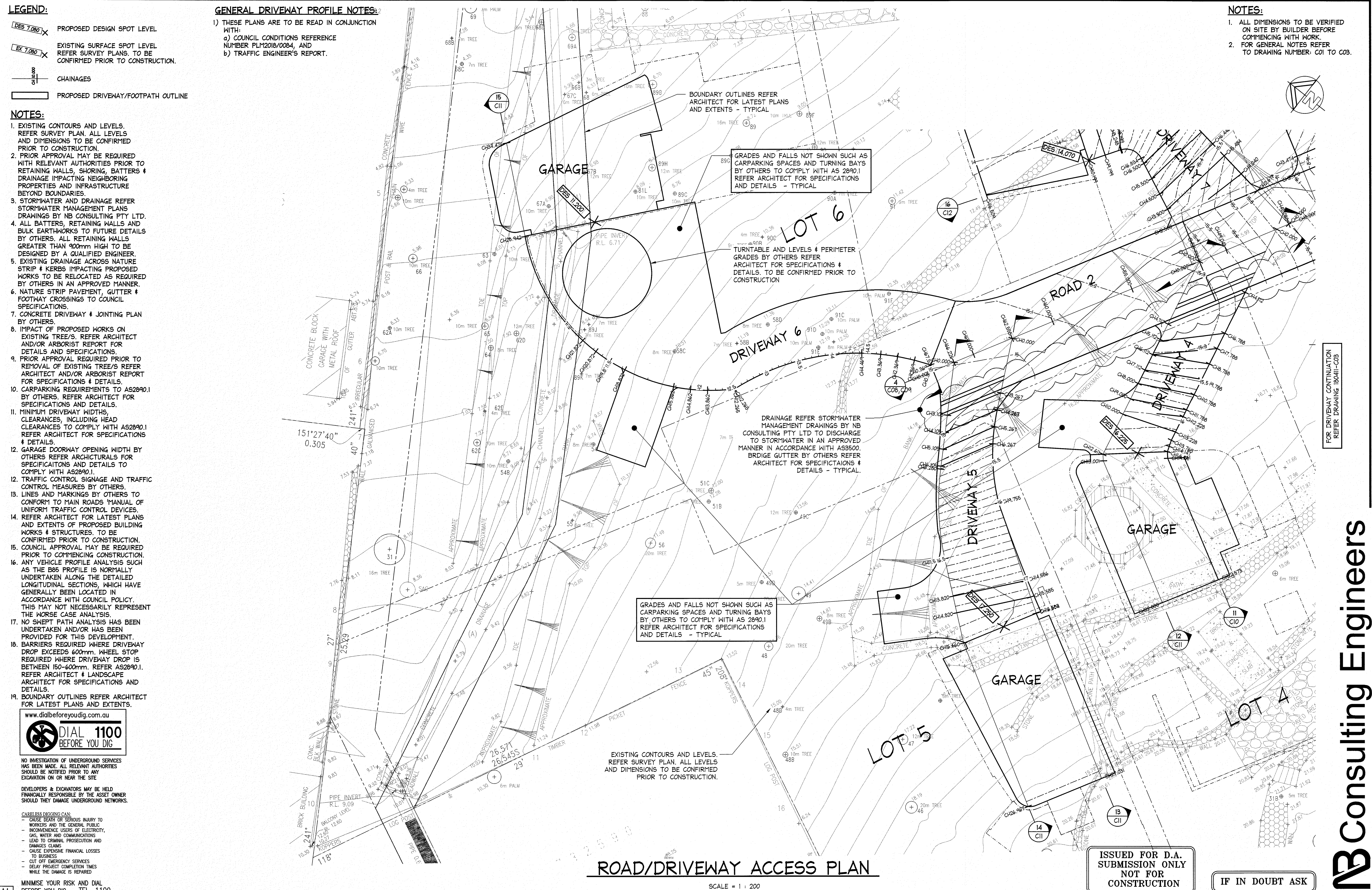
MINIMISE YOUR RISK AND DIAL BEFORE YOU DIG. - TEL. 1100

GENERAL DRIVEWAY PROFILE NOTES:

- THESE PLANS ARE TO BE READ IN CONJUNCTION WITH:
 - COUNCIL CONDITIONS REFERENCE NUMBER PLM2018/0084, AND
 - TRAFFIC ENGINEER'S REPORT.

NOTES:

- ALL DIMENSIONS TO BE VERIFIED ON SITE BY BUILDER BEFORE COMMENCING WITH WORK.
- FOR GENERAL NOTES REFER TO DRAWING NUMBER: C01 TO C03.



ROAD/DRIVEWAY ACCESS PLAN

SCALE = 1 : 200

ISSUED FOR D.A. SUBMISSION ONLY NOT FOR CONSTRUCTION

IF IN DOUBT ASK

28/11/2018	A	ISSUED FOR DA SUBMISSION ONLY - NOT FOR CONSTRUCTION			D.K. L.G.
Date:	Issue:	Description:	By:	Review:	

DOCUMENT CERTIFICATION

Date: Rick G Wray

BE(Civil), CPENG, MIEAust, NER, RPEQ: 08293 (Director NB Consulting Engineers)

The copyright of this drawing remains with Northern Beaches Consulting Engineers Pty Ltd. Trading as NB Consulting Engineers

NB Consulting Engineers

STRUCTURAL - CIVIL - STORMWATER - REMEDIAL
A.C.N. 076 121 616 A.B.N. 24 076 121 616

Sydney: Ph: (02) 9984 7000 Fax: (02) 9984 7444
Suite 207, 30 Fisher Road Dee Why N.S.W. 2099
Gold Coast: Ph: (07) 5631 4744
Unit 8, 1726 Gold Coast Highway Burleigh Heads QLD 4220
E: nb@nbconsulting.com.au W: www.nbconsulting.com.au

Architect: MARK HURCUM DESIGN PRACTICE PTY LTD

Client: MERAKI DEVELOPMENTS PTY LTD

Project: PROPOSED ROADS AND DRIVEWAYS AT 96-104 CABARITA RD, AVALON BEACH

Drawing Title: ROAD & DRIVEWAY ACCESS PLAN (1:100) - SHEET 5

Date: SEP 2018	Design: D.K.	Drawn: D.K.
Job No: 180411	Drawing No: C05	Issue: A

NB Consulting Engineers

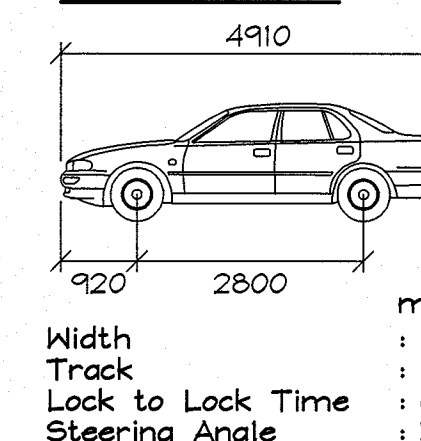
NOTES:

- ALL DIMENSIONS TO BE VERIFIED ON SITE BY BUILDER BEFORE COMMENCING WITH WORK.
- FOR GENERAL NOTES REFER TO DRAWING NUMBER: C01.

www.dialbeforeyoudig.com.au



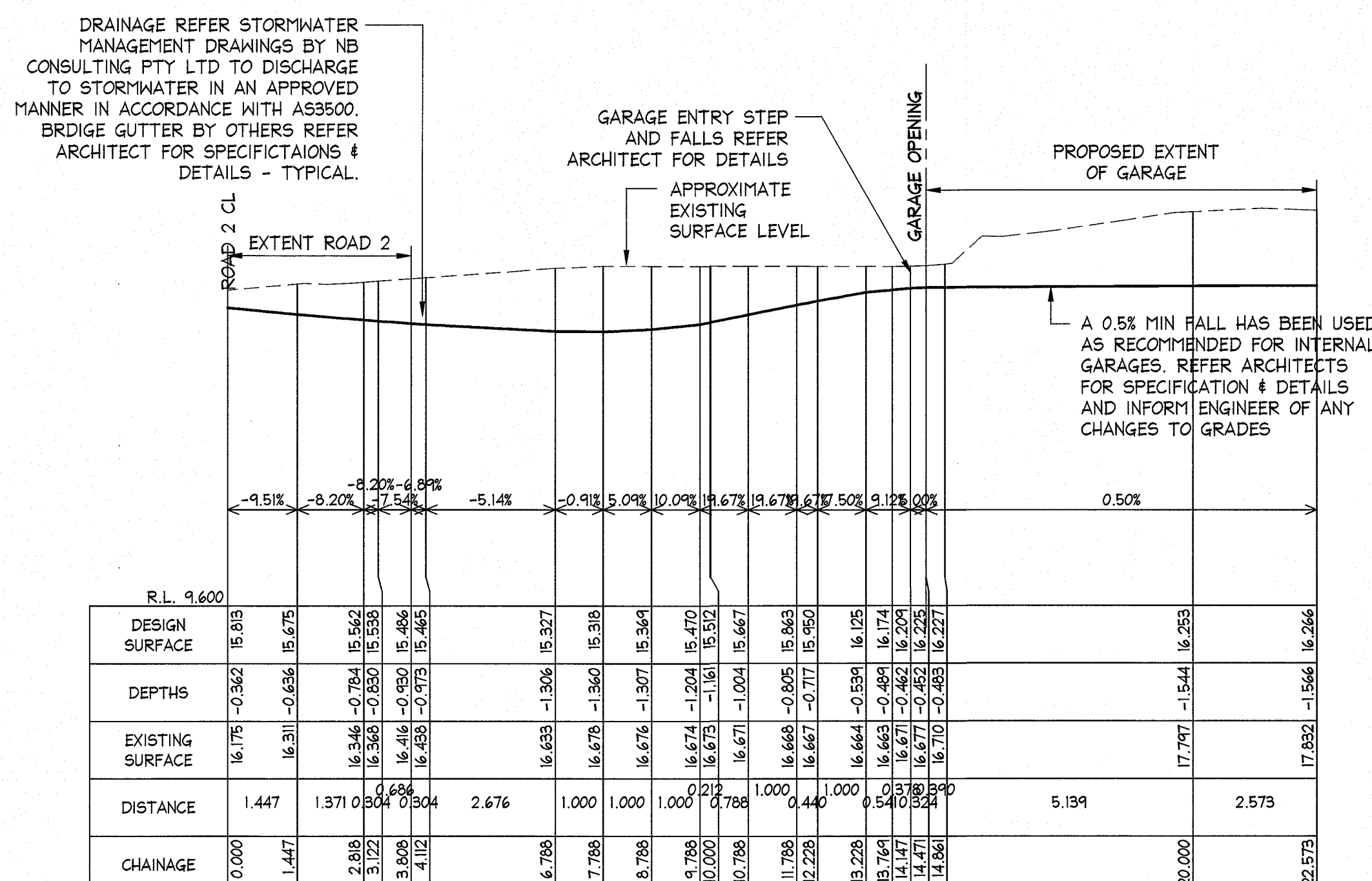
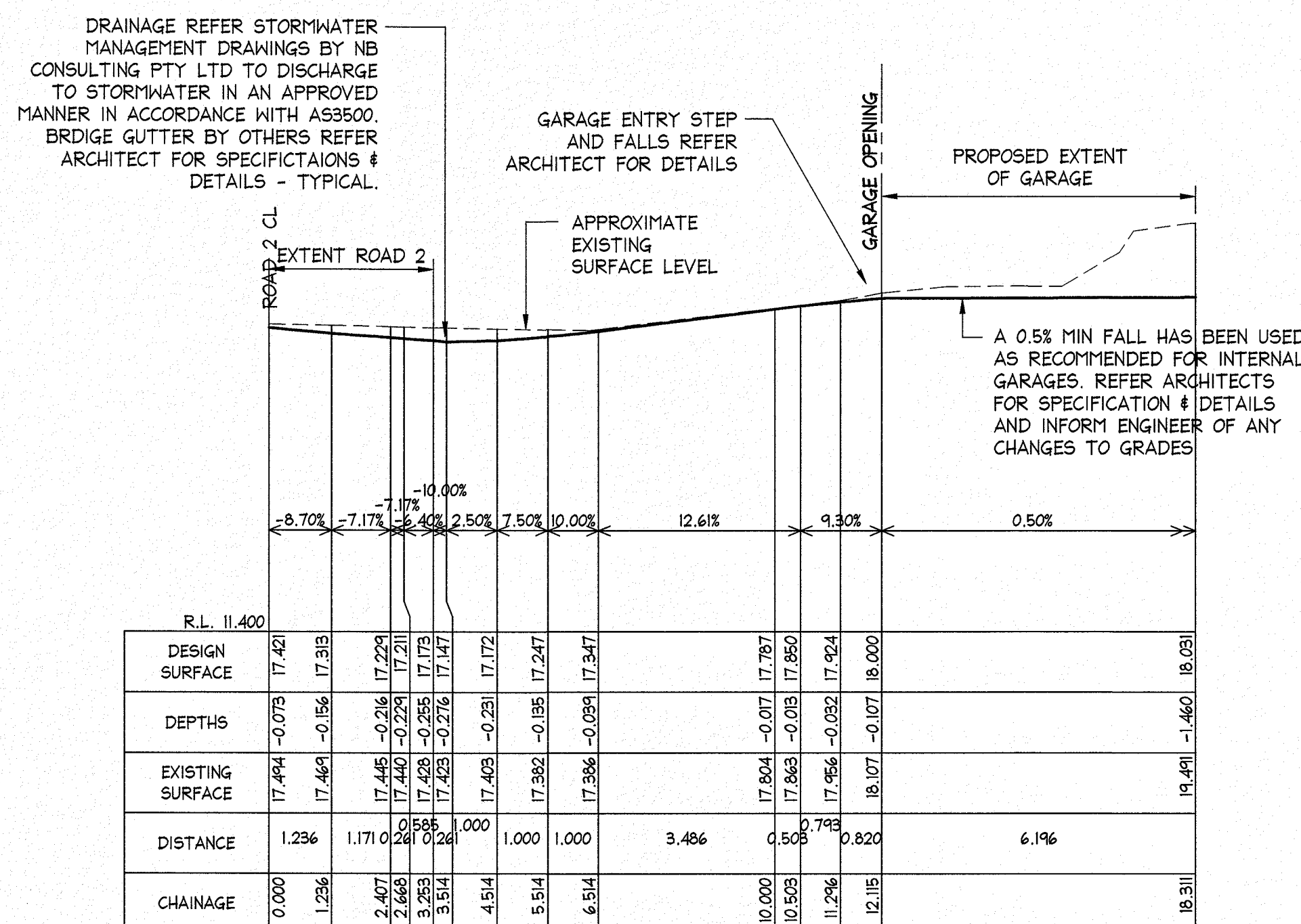
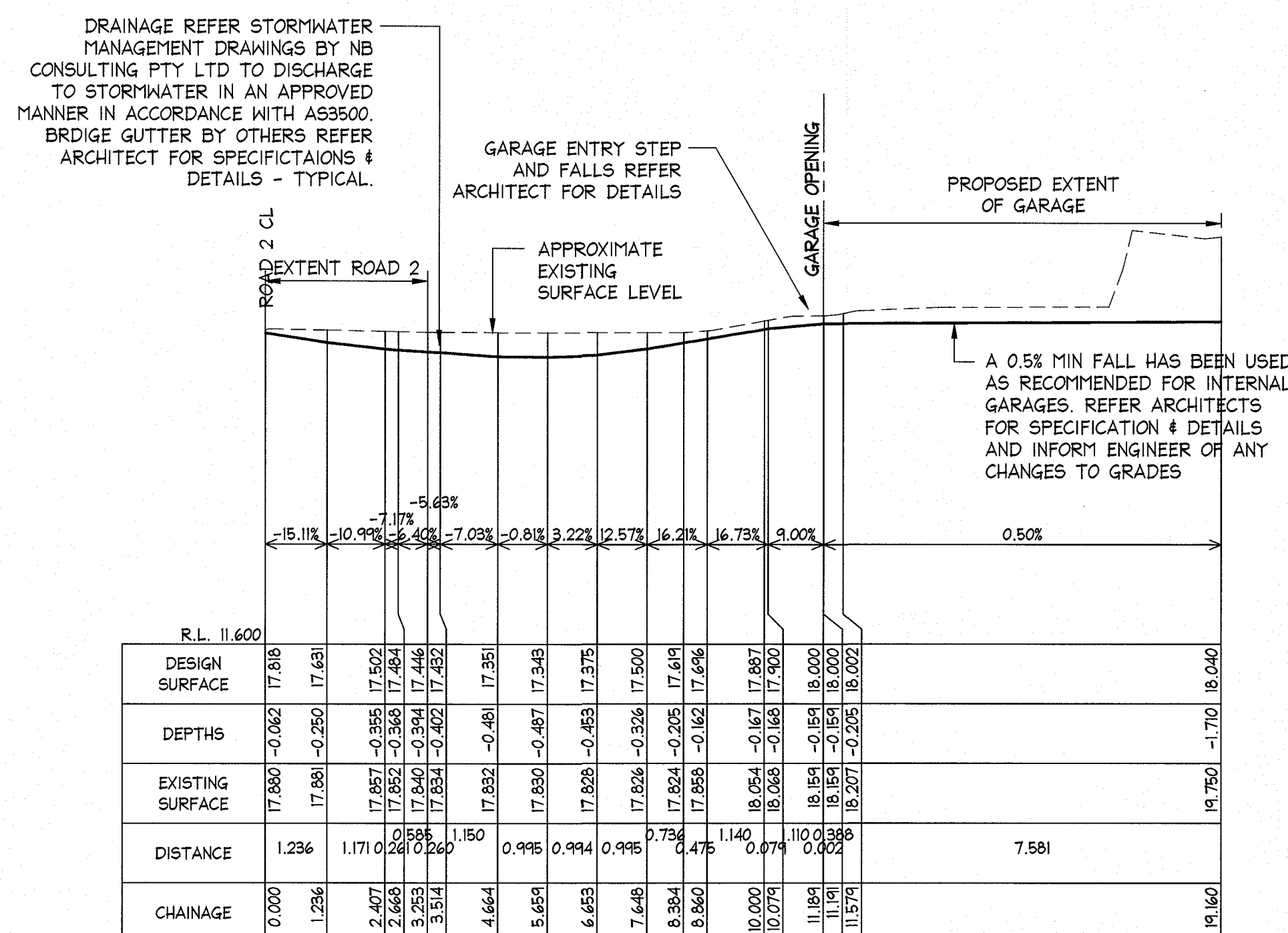
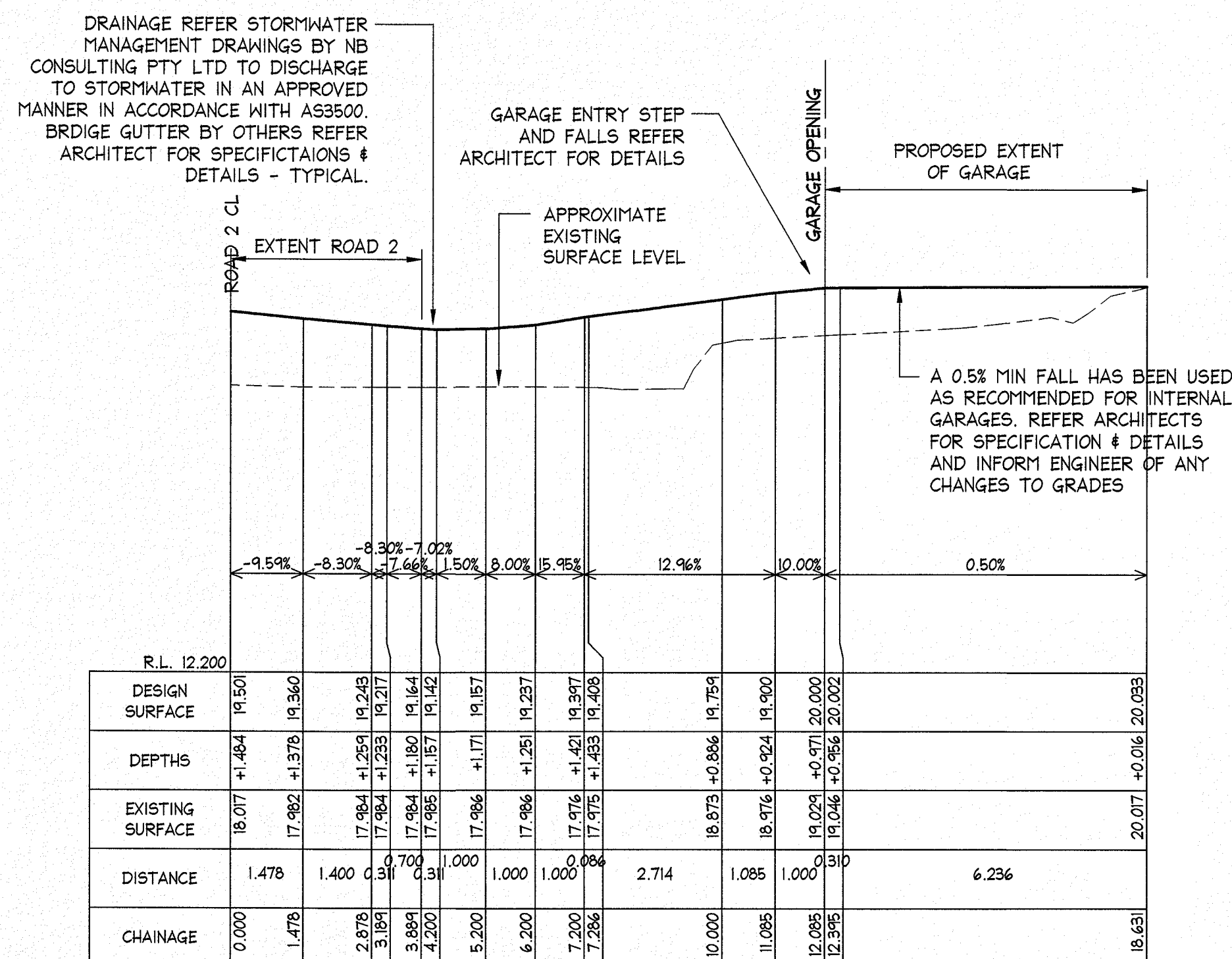
B85 PROFILE:



GENERAL NOTES:

- REFER AS/NZS 2890.1

DRAINAGE (SUCH AS GRATED DRAINS) REFER STORMWATER MANAGEMENT DRAWINGS BY NB CONSULTING PTY LTD TO DISCHARGE TO STORMWATER IN AN APPROVED MANNER IN ACCORDANCE WITH AS3500 - TYPICAL.



ISSUED FOR D.A. SUBMISSION ONLY NOT FOR CONSTRUCTION

IF IN DOUBT ASK

NB Consulting Engineers

AI

<div> <div>28/11/2018</div> <div>A</div> <div>ISSUED FOR DA SUBMISSION ONLY - NOT FOR CONSTRUCTION</div> </div>			<div> <div>By:</div> <div>Review:</div> </div>		<div> <div>DATE</div> <div>28/11/2018</div> </div>		<div> <div>DESCRIPTION</div> <div>ISSUED FOR DA SUBMISSION ONLY - NOT FOR CONSTRUCTION</div> </div>		<div> <div>DATE</div> <div>28/11/2018</div> </div>		<div> <div>DESCRIPTION</div> <div>ISSUED FOR DA SUBMISSION ONLY - NOT FOR CONSTRUCTION</div> </div>		<div> <div>DATE</div> <div>28/11/2018</div> </div>		<div> <div>DESCRIPTION</div> <div>ISSUED FOR DA SUBMISSION ONLY - NOT FOR CONSTRUCTION</div> </div>		<div> <div>DATE</div> <div>28/11/2018</div> </div>		<div> <div>DESCRIPTION</div> <div>ISSUED FOR DA SUBMISSION ONLY - NOT FOR CONSTRUCTION</div> </div>		<div> <div>DATE</div> <div>28/11/2018</div> </div>		<div> <div>DESCRIPTION</div> <div>ISSUED FOR DA SUBMISSION ONLY - NOT FOR CONSTRUCTION</div> </div>		<div> <div>DATE</div> <div>28/11/2018</div> </div>		<div> <div>DESCRIPTION</div> <div>ISSUED FOR DA SUBMISSION ONLY - NOT FOR CONSTRUCTION</div> </div>		<div> <div>DATE</div> <div>28/11/2018</div> </div>		<div> <div>DESCRIPTION</div> <div>ISSUED FOR DA SUBMISSION ONLY - NOT FOR CONSTRUCTION</div> </div>		<div> <div>DATE</div> <div>28/11/2018</div> </div>		<div> <div>DESCRIPTION</div> <div>ISSUED FOR DA SUBMISSION ONLY - NOT FOR CONSTRUCTION</div> </div>		<div> <div>DATE</div> <div>28/11/2018</div> </div>		<div> <div>DESCRIPTION</div> <div>ISSUED FOR DA SUBMISSION ONLY - NOT FOR CONSTRUCTION</div> </div>		<div> <div>DATE</div> <div>28/11/2018</div> </div>		<div> <div>DESCRIPTION</div> <div>ISSUED FOR DA SUBMISSION ONLY - NOT FOR CONSTRUCTION</div> </div>		<div> <div>DATE</div> <div>28/11/2018</div> </div>		<div> <div>DESCRIPTION</div> <div>ISSUED FOR DA SUBMISSION ONLY - NOT FOR CONSTRUCTION</div> </div>		<div> <div>DATE</div> <div>28/11/2018</div> </div>		<div> <div>DESCRIPTION</div> <div>ISSUED FOR DA SUBMISSION ONLY - NOT FOR CONSTRUCTION</div> </div>		<div> <div>DATE</div> <div>28/11/2018</div> </div>		<div> <div>DESCRIPTION</div> <div>ISSUED FOR DA SUBMISSION ONLY - NOT FOR CONSTRUCTION</div> </div>		<div> <div>DATE</div> <div>28/11/2018</div> </div>		<div> <div>DESCRIPTION</div> <div>ISSUED FOR DA SUBMISSION ONLY - NOT FOR CONSTRUCTION</div> </div>		<div> <div>DATE</div> <div>28/11/2018</div> </div>		<div> <div>DESCRIPTION</div> <div>ISSUED FOR DA SUBMISSION ONLY - NOT FOR CONSTRUCTION</div> </div>		<div> <div>DATE</div> <div>28/11/2018</div> </div>		<div> <div>DESCRIPTION</div> <div>ISSUED FOR DA SUBMISSION ONLY - NOT FOR CONSTRUCTION</div> </div>		<div> <div>DATE</div> <div>28/11/2018</div> </div>		<div> <div>DESCRIPTION</div> <div>ISSUED FOR DA SUBMISSION ONLY - NOT FOR CONSTRUCTION</div> </div>		<div> <div>DATE</div> <div>28/11/2018</div> </div>		<div> <div>DESCRIPTION</div> <div>ISSUED FOR DA SUBMISSION ONLY - NOT FOR CONSTRUCTION</div> </div>		<div> <div>DATE</div> <div>28/11/2018</div> </div>		<div> <div>DESCRIPTION</div> <div>ISSUED FOR DA SUBMISSION ONLY - NOT FOR CONSTRUCTION</div> </div>		<div> <div>DATE</div> <div>28/11/2018</div> </div>		<div> <div>DESCRIPTION</div> <div>ISSUED FOR DA SUBMISSION ONLY - NOT FOR CONSTRUCTION</div> </div>		<div> <div>DATE</div> <div>28/11/2018</div> </div>		<div> <div>DESCRIPTION</div> <div>ISSUED FOR DA SUBMISSION ONLY - NOT FOR CONSTRUCTION</div> </div>		<div> <div>DATE</div> <div>28/11/2018</div> </div>		<div> <div>DESCRIPTION</div> <div>ISSUED FOR DA SUBMISSION ONLY - NOT FOR CONSTRUCTION</div> </div>		<div> <div>DATE</div> <div>28/11/2018</div> </div>		<div> <div>DESCRIPTION</div> <div>ISSUED FOR DA SUBMISSION ONLY - NOT FOR CONSTRUCTION</div> </div>		<div> <div>DATE</div> <div>28/11/2018</div> </div>		<div> <div>DESCRIPTION</div> <div>ISSUED FOR DA SUBMISSION ONLY - NOT FOR CONSTRUCTION</div> </div>		<div> <div>DATE</div> <div>28/11/2018</div> </div>		<div> <div>DESCRIPTION</div> <div>ISSUED FOR DA SUBMISSION ONLY - NOT FOR CONSTRUCTION</div> </div>		<div> <div>DATE</div> <div>28/11/2018</div> </div>		<div> <div>DESCRIPTION</div> <div>ISSUED FOR DA SUBMISSION ONLY - NOT FOR CONSTRUCTION</div> </div>		<div> <div>DATE</div> <div>28/11/2018</div> </div>		<div> <div>DESCRIPTION</div> <div>ISSUED FOR DA SUBMISSION ONLY - NOT FOR CONSTRUCTION</div> </div>		<div> <div>DATE</div> <div>28/11/2018</div> </div>		<div> <div>DESCRIPTION</div> <div>ISSUED FOR DA SUBMISSION ONLY - NOT FOR CONSTRUCTION</div> </div>		<div> <div>DATE</div> <div>28/11/2018</div> </div>		<div> <div>DESCRIPTION</div> <div>ISSUED FOR DA SUBMISSION ONLY - NOT FOR CONSTRUCTION</div> </div>		<div> <div>DATE</div> <div>28/11/2018</div> </div>		<div> <div>DESCRIPTION</div> <div>ISSUED FOR DA SUBMISSION ONLY - NOT FOR CONSTRUCTION</div> </div>		<div> <div>DATE</div> <div>28/11/2018</div> </div>		<div> <div>DESCRIPTION</div> <div>ISSUED FOR DA SUBMISSION ONLY - NOT FOR CONSTRUCTION</div> </div>		<div> <div>DATE</div> <div>28/11/2018</div> </div>		<div> <div>DESCRIPTION</div> <div>ISSUED FOR DA SUBMISSION ONLY - NOT FOR CONSTRUCTION</div> </div>		<div> <div>DATE</div> <div>28/11/2018</div> </div>		<div> <div>DESCRIPTION</div> <div>ISSUED FOR DA SUBMISSION ONLY - NOT FOR CONSTRUCTION</div> </div>		<div> <div>DATE</div> <div>28/11/2018</div> </div>		<div> <div>DESCRIPTION</div> <div>ISSUED FOR DA SUBMISSION ONLY - NOT FOR CONSTRUCTION</div> </div>		<div> <div>DATE</div> <div>28/11/2018</div> </div>		<div> <div>DESCRIPTION</div> <div>ISSUED FOR DA SUBMISSION ONLY - NOT FOR CONSTRUCTION</div> </div>		<div> <div>DATE</div> <div>28/11/2018</div> </div>		<div> <div>DESCRIPTION</div> <div>ISSUED FOR DA SUBMISSION ONLY - NOT FOR CONSTRUCTION</div> </div>		<div> <div>DATE</div> <div>28/11/2018</div> </div>		<div> <div>DESCRIPTION</div> <div>ISSUED FOR DA SUBMISSION ONLY - NOT FOR CONSTRUCTION</div> </div>		<div> <div>DATE</div> <div>28/11/2018</div> </div>		<div> <div>DESCRIPTION</div> <div>ISSUED FOR DA SUBMISSION ONLY - NOT FOR CONSTRUCTION</div> </div>		<div> <div>DATE</div> <div>28/11/2018</div> </div>		<div> <div>DESCRIPTION</div> <div>ISSUED FOR DA SUBMISSION ONLY - NOT FOR CONSTRUCTION</div> </div>		<div> <div>DATE</div> <div>28/11/2018</div> </div>		<div> <div>DESCRIPTION</div> <div>ISSUED FOR DA SUBMISSION ONLY - NOT FOR CONSTRUCTION</div> </div>		<div> <div>DATE</div> <div>28/11/2018</div> </div>		<div> <div>DESCRIPTION</div> <div>ISSUED FOR DA SUBMISSION ONLY - NOT FOR CONSTRUCTION</div> </div>		<div> <div>DATE</div> <div>28/11/2018</div> </div>		<div> <div>DESCRIPTION</div> <div>ISSUED FOR DA SUBMISSION ONLY - NOT FOR CONSTRUCTION</div> </div>		<div> <div>DATE</div> <div>28/11/2018</div> </div>		<div> <div>DESCRIPTION</div> <div>ISSUED FOR DA SUBMISSION ONLY - NOT FOR CONSTRUCTION</div> </div>		<div> <div>DATE</div> <div>28/11/2018</div> </div>		<div> <div>DESCRIPTION</div> <div>ISSUED FOR DA SUBMISSION ONLY - NOT FOR CONSTRUCTION</div> </div>		<div> <div>DATE</div> <div>28/11/2018</div> </div>		<div> <div>DESCRIPTION</div> <div>ISSUED FOR DA SUBMISSION ONLY - NOT FOR CONSTRUCTION</div> </div>		<div> <div>DATE</div> <div>28/11/2018</div> </div>		<div> <div>DESCRIPTION</div> <div>ISSUED FOR DA SUBMISSION ONLY - NOT FOR CONSTRUCTION</div> </div>		<div> <div>DATE</div> <div>28/11/2018</div> </div>		<div> <div>DESCRIPTION</div> <div>ISSUED FOR DA SUBMISSION ONLY - NOT FOR CONSTRUCTION</div> </div>		<div> <div>DATE</div> <div>28/11/2018</div> </div>		<div> <div>DESCRIPTION</div> <div>ISSUED FOR DA SUBMISSION ONLY - NOT FOR CONSTRUCTION</div> </div>		<div> <div>DATE</div> <div>28/11/2018</div> </div>		<div> <div>DESCRIPTION</div> <div>ISSUED FOR DA SUBMISSION ONLY - NOT FOR CONSTRUCTION</div> </div>		<div> <div>DATE</div> <div>28/11/2018</div> </div>		<div> <div>DESCRIPTION</div> <div>ISSUED FOR DA SUBMISSION ONLY - NOT FOR CONSTRUCTION</div> </div>		<div> <div>DATE</div> <div>28/11/2018</div> </div>		<div> <div>DESCRIPTION</div> <div>ISSUED FOR DA SUBMISSION ONLY - NOT FOR CONSTRUCTION</div> </div>		<div> <div>DATE</div> <div>28/11/2018</div> </div>		<div> <div>DESCRIPTION</div> <div>ISSUED FOR DA SUBMISSION ONLY - NOT FOR CONSTRUCTION</div> </div>		<div> <div>DATE</div> <div>28/11/2018</div> </div>		<div> <div>DESCRIPTION</div> <div>ISSUED FOR DA SUBMISSION ONLY - NOT FOR CONSTRUCTION</div> </div>		<div> <div>DATE</div> <div>28/11/2018</div> </div>		<div> <div>DESCRIPTION</div> <div>ISSUED FOR DA SUBMISSION ONLY - NOT FOR CONSTRUCTION</div> </div>		<div> <div>DATE</div> <div>28/11/2018</div> </div>		<div> <div>DESCRIPTION</div> <div>ISSUED FOR DA SUBMISSION ONLY - NOT FOR CONSTRUCTION</div> </div>		<div> <div>DATE</div> <div>28/11/2018</div> </div>		<div> <div>DESCRIPTION</div> <div>ISSUED FOR DA SUBMISSION ONLY - NOT FOR CONSTRUCTION</div> </div>		<div> <div>DATE</div> <div>28/11/2018</div> </div>		<div> <div>DESCRIPTION</div> <div>ISSUED FOR DA SUBMISSION ONLY - NOT FOR CONSTRUCTION</div> </div>		<div> <div>DATE</div> <div>28/11/2018</div> </div>		<div> <div>DESCRIPTION</div> <div>ISSUED FOR DA SUBMISSION ONLY - NOT FOR CONSTRUCTION</div> </div>		<div> <div>DATE</div> <div>28/11/2018</div> </div>		<div> <div>DESCRIPTION</div> <div>ISSUED FOR DA SUBMISSION ONLY - NOT FOR CONSTRUCTION</div> </div>		<div> <div>DATE</div> <div>28/11/2018</div> </div>		<div> <div>DESCRIPTION</div> <div>ISSUED FOR DA SUBMISSION ONLY - NOT FOR CONSTRUCTION</div> </div>		<div> <div>DATE</div> <div>28/11/2018</div> </div>		<div> <div>DESCRIPTION</div> <div>ISSUED FOR DA SUBMISSION ONLY - NOT FOR CONSTRUCTION</div> </div>		<div> <div>DATE</div> <div>28/11/2018</div> </div>		<div> <div>DESCRIPTION</div> <div>ISSUED FOR DA SUBMISSION ONLY - NOT FOR CONSTRUCTION</div> </div>		<div> <div>DATE</div> <div>28/11/2018</div> </div>		<div> <div>DESCRIPTION</div> <div>ISSUED FOR DA SUBMISSION ONLY - NOT FOR CONSTRUCTION</div> </div>	
---	--	--	--	--	--	--	---	--	--	--	---	--	--	--	---	--	--	--	---	--	--	--	---	--	--	--	---	--	--	--	---	--	--	--	---	--	--	--	---	--	--	--	---	--	--	--	---	--	--	--	---	--	--	--	---	--	--	--	---	--	--	--	---	--	--	--	---	--	--	--	---	--	--	--	---	--	--	--	---	--	--	--	---	--	--	--	---	--	--	--	---	--	--	--	---	--	--	--	---	--	--	--	---	--	--	--	---	--	--	--	---	--	--	--	---	--	--	--	---	--	--	--	---	--	--	--	---	--	--	--	---	--	--	--	---	--	--	--	---	--	--	--	---	--	--	--	---	--	--	--	---	--	--	--	---	--	--	--	---	--	--	--	---	--	--	--	---	--	--	--	---	--	--	--	---	--	--	--	---	--	--	--	---	--	--	--	---	--	--	--	---	--	--	--	---	--	--	--	---	--	--	--	---	--	--	--	---	--	--	--	---	--	--	--	---	--	--	--	---	--	--	--	---	--	--	--	---	--	--	--	---	--	--	--	---	--	--	--	---	--	--	--	---	--	--	--	---	--	--	--	---	--	--	--	---	--

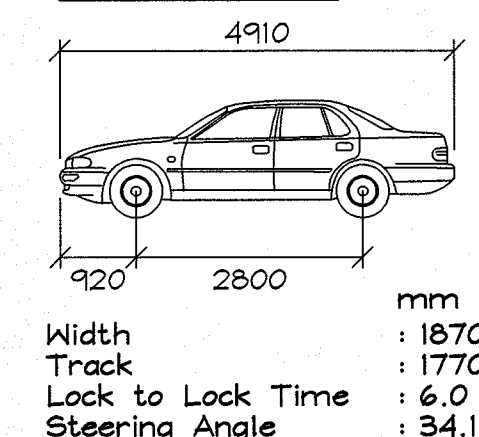
NOTES:

- ALL DIMENSIONS TO BE VERIFIED ON SITE BY BUILDER BEFORE COMMENCING WITH WORK.
- FOR GENERAL NOTES REFER TO DRAWING NUMBER: C01.

www.dialbeforeyoudig.com.au



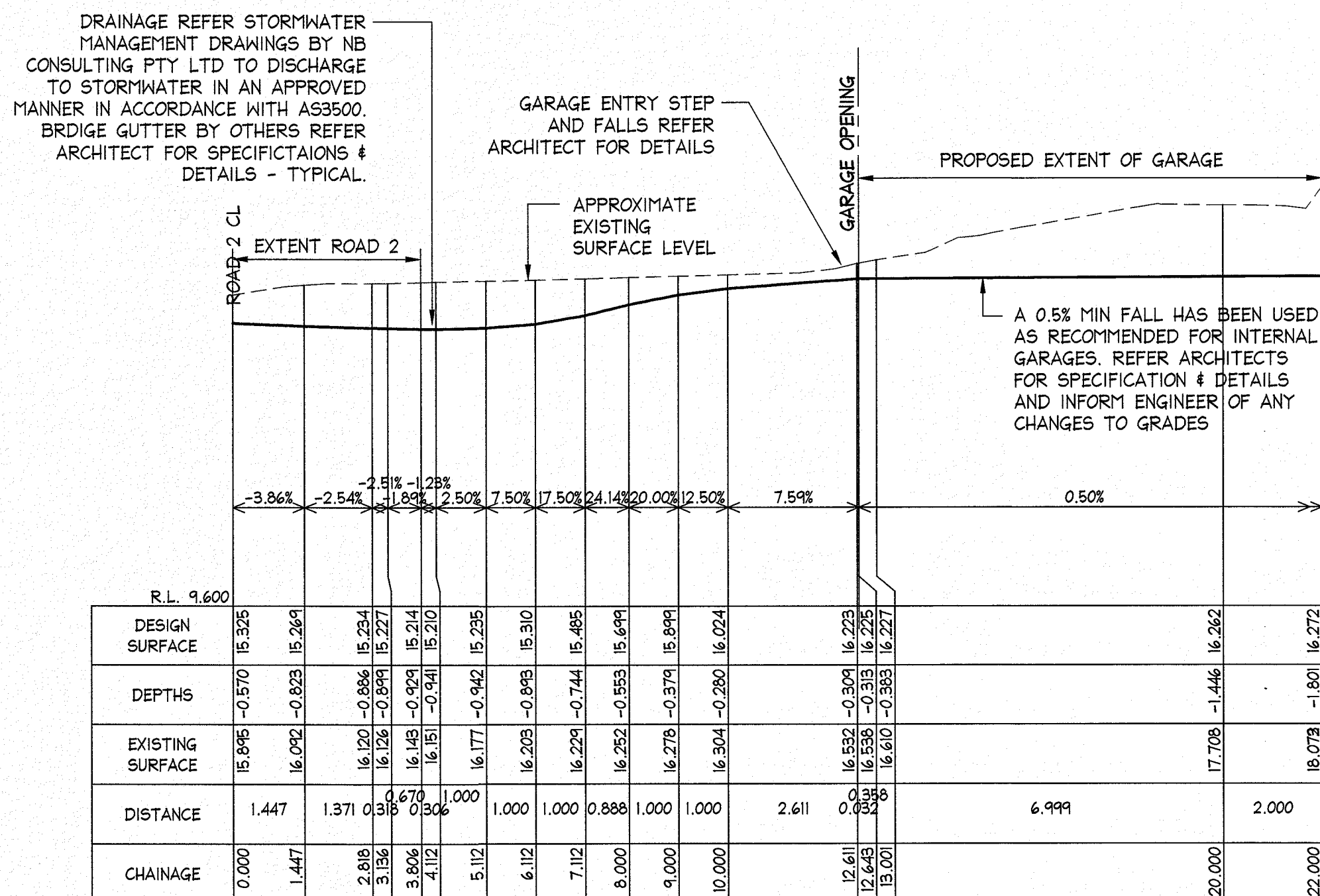
B85 PROFILE:



GENERAL NOTES:

- REFER AS/NZS 2890.1

DRAINAGE (SUCH AS GRATED DRAINS) REFER STORMWATER MANAGEMENT DRAWINGS BY NB CONSULTING PTY LTD TO DISCHARGE TO STORMWATER IN AN APPROVED MANNER IN ACCORDANCE WITH AS3500 - TYPICAL.



LONGITUDINAL SECTION DRIVEWAY DR04 RH
FROM CH: 0.000 TO CH: 22.000
SCALES: HORIZONTAL 1:100 VERTICAL 1:100

SECTION 12 C05

