

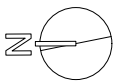
greenfriends  
gardens

Botanical Name	Common Name	Pot Size	Quantity
<b>Trees &amp; Palms</b>			
<i>Acacia pendula</i>	Weeping Myall	100lt	4
<i>Acacia cognata &amp; cvs</i>	Bower Wattle	100lt	7
<i>Banksia integrifolia</i> 'Sentinel'	Sentinel Coast Banksia	100lt	15
<i>Brachychiton rupestris</i>	Queensland Bottle Tree	250lt	1
<i>Corymbia citriodora</i> 'Scentuous'	Dwarf Lemon Scented Gum	150lt	4
<i>Xanthorrhoea glauca</i>	Grass Tree	175lt	14
<i>Melaleuca leucadendra</i>	Weeping Paperbark	100lt	3
<b>Shrubs</b>			
<i>Casuarina glauca</i> 'Greenwave'	Casuarina Greenwave	300mm	17
<i>Eriostemon australasius</i>	Pink Wax Flower	200mm	10
<i>Eucalyptus lunata</i>	Moon Lagoon	200mm	18
<i>Leptospermum laevigatum</i>	Coastal Tea-Tree	400mm	6
<i>Rhagodia spinescens</i> 'Silver Border'	Creeping Saltbush	200mm	20
<b>Ferns &amp; Cycads</b>			
<i>Asplenium australasicum</i>	Birds Nest Fern	300mm	7
<i>Cyathea cooperi</i>	Australian Tree Fern	150lt	6
<i>Dicksonia antarctica</i>	Soft Tree Fern	1m	6
<i>Doodia aspera</i>	Rasp Fern	200mm	40
<i>Macrozamia communis</i>	Burrawang, Macrozamia	200lt	8
<b>Perennials</b>			
<i>Pycnosorus globosus</i>	Billy Buttons	140mm	20
<i>Actinotus helianthi</i>	Flannel Flower	140mm	60
<i>Conostylis candicans</i> 'Silver Sunrise'	Cotton Heads	140mm	24
<i>Xerochrysum bracteatum</i>	Everlasting Daisy	140mm	16
<b>Grasses</b>			
<i>Lomandra confertifolia</i> 'Frosty Top'	Lomandra Frosty Top	140mm	110
<i>Lomandra confertifolia</i> 'Lime Mist'	Lomandra Lime Mist	140mm	90
<i>Poa labillardierei</i> 'Eskdale'	Eskdale Poa	140mm	70
<b>Climbers &amp; Groundcovers</b>			
<i>Banksia integrifolia</i> 'Roller Coaster'	Banksia Roller Coaster	200mm	12
<i>Casuarina glauca</i> 'Cousin It'	Cousin It	250mm	30
<i>Dichondra repens</i>	Kidney Weed	140mm	100
<i>Eremophila glabra</i> 'Kalbarri Carpet'	Tar Bush	200mm	20
<i>Grevillea</i> 'Austraflora Fanfare'	Grevillea 'Austraflora Fanfare'	200mm	12
<i>Hibbertia scandens</i>	Snake Vine	140mm	25
<i>Myoporum parvifolium</i>	Creeping Boobialla	140mm	30



Notes:

The street-front garden features a generous native palette, with small to medium trees layered over flowering shrubs, perennials, and clumped grasses nestled among boulders that terrace the slope. This soft, naturalistic planting seeks to give back to the streetscape while gently grounding the built form within its landscape

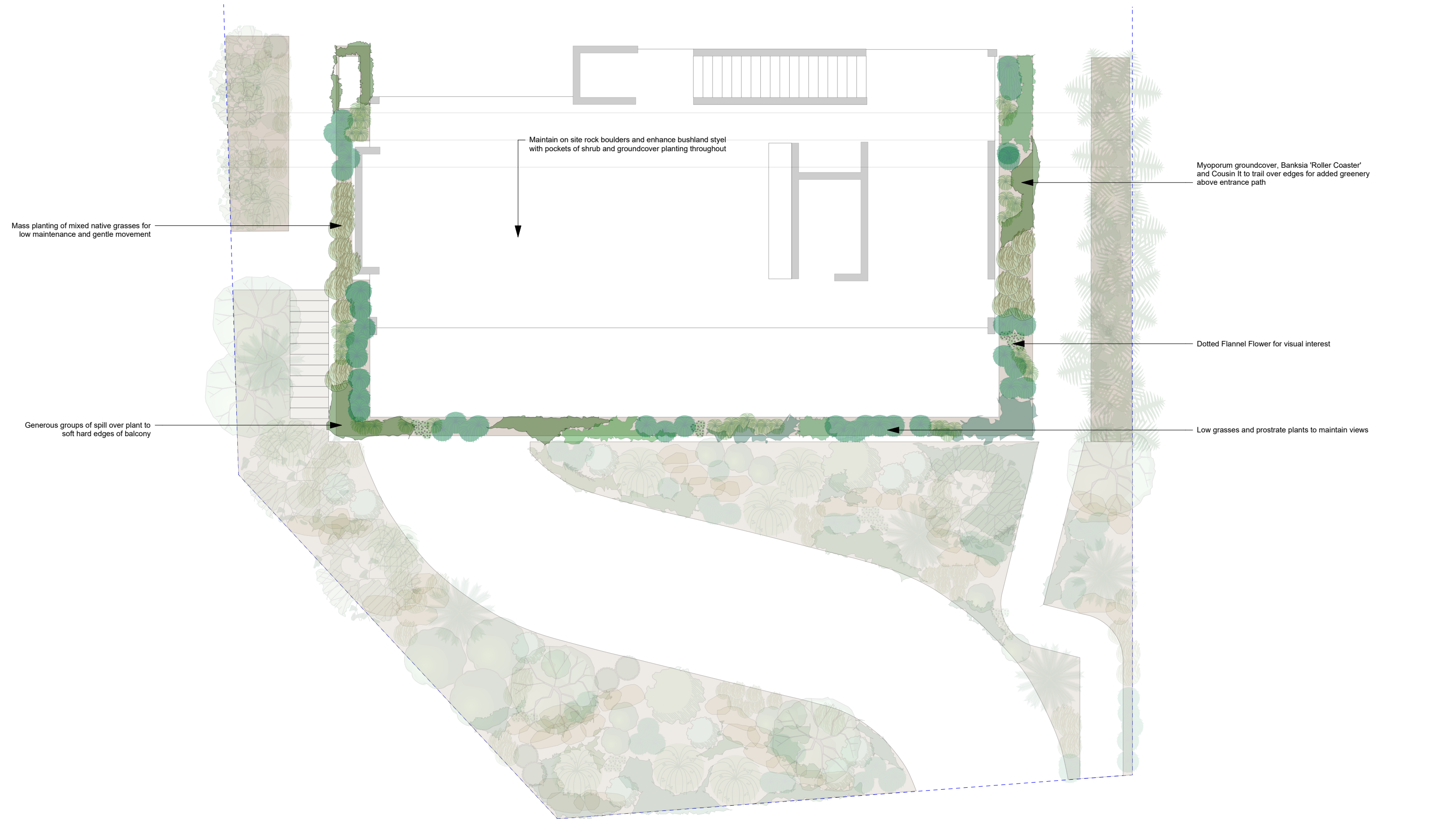




Notes:

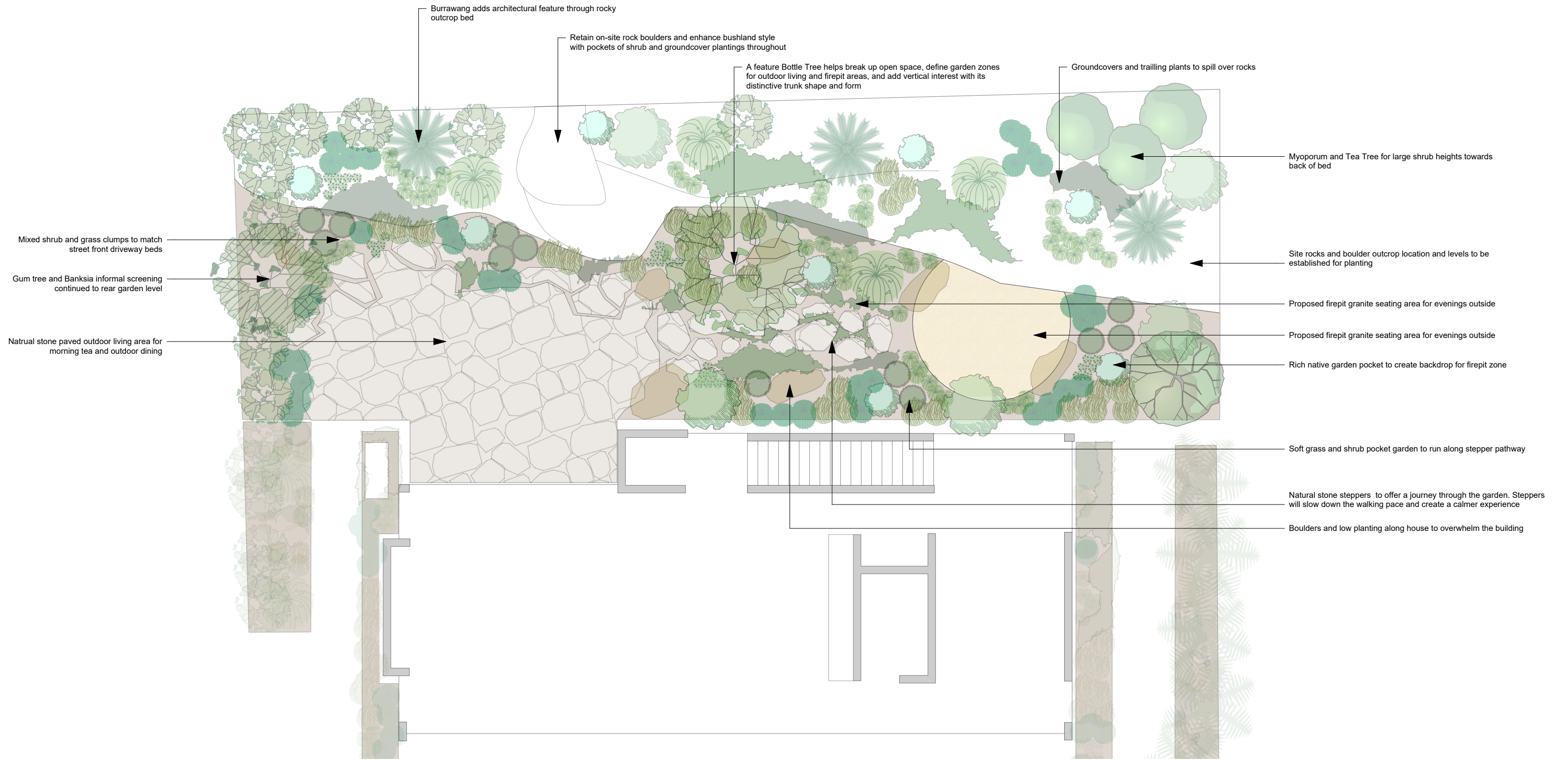
Along the northern boundary, native trees and grasses will embrace the balcony and side stairs, evoking a bushland feel within the architecture. The southern boundary will host a lush fern garden, creating a softened, inviting transition for visitors moving through the space





Notes:

Balcony planters will gently soften the built form at first-floor level, with low, delicate plantings chosen to preserve outward views from the main living spaces



Notes:

The rear garden creates a seamless indoor-outdoor connection, drawing you into a green, inviting space. A thoughtfully planted rocky outcrop offers privacy while echoing the lower garden's layout—designed for easy maintenance, everyday use, and restful views from within the home