

FLOOR PART PLAN

NOTE: TOTAL AREA OF BALCONY EQUAL TO OR LESS THAN 25 Sq. m.

STEEL SCREW PILES:

SP1 & SP2 & SP3 & SP4 \_\_\_\_\_ MIN 76 x 4.5 CHS

SCREW PILE SCHEDULE				
PILES TO CONTRACTOR'S DESIGN IN ACCORDANCE WITH THE STEEL SCREW PILES ON DRG. No. S001 TO SATISFY THE NOMINATED LOAD REQUIREMENTS				
PILE TYP.	MINIMUM REQUIRED ALLOWABLE PILE CAPACITY IN TONNES (t)		MINIMUM SHAFT SIZE	NOTE
	VERTICAL - COMPRESSION	VERTICAL - TENSION (UPLIFT)		
SP1	7t SWL	-	76 X 4.5 CHS	BOTTOM OF PILE MUST UNDER THE Z.O.I FOR SEWER PIPE. P1 AND P3 TO BE MIN. 900 mm AWAY FROM THE EDGE OF THE EXISTING SEWER PIPE
SP2	2t SWL	3.5t SWL	76 X 4.5 CHS	
SP3	3.5t SWL	-	76 X 4.5 CHS	
SP4	1t SWL	1.8t SWL	76 X 4.5 CHS	

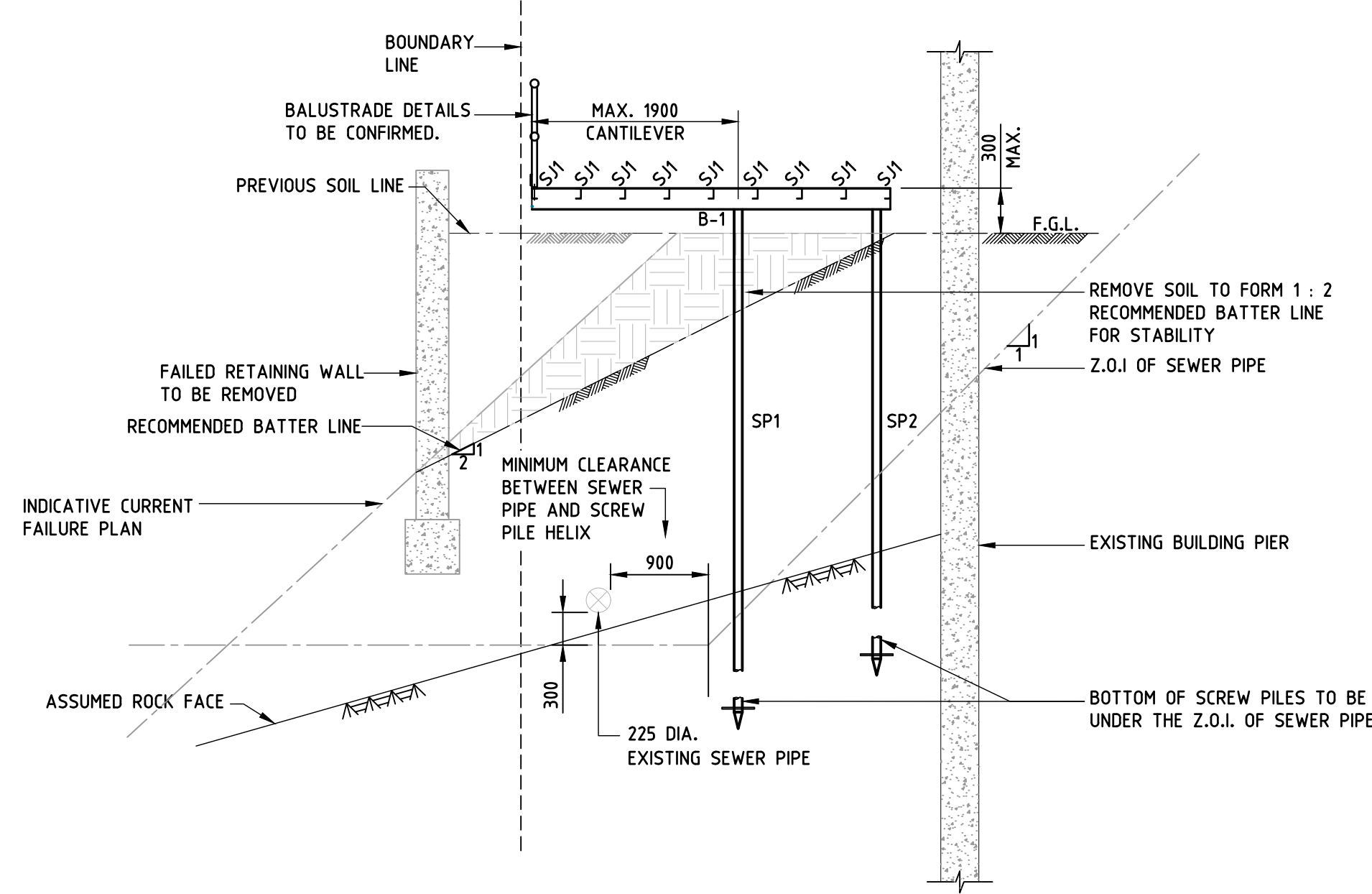
MEMBER SIZES:

BEAMS (B) \_\_\_\_\_ 1 \_\_\_\_\_ 200 UB 18  
ROOF BRACING \_\_\_\_\_ X1 \_\_\_\_\_ 75 x 10 PL. \_\_\_\_\_ 10 PL. GUSSETS WELDED TO BOTTOM OF BEAMS. 2 M16 8.8/S BOLTS EACH END.  
STEEL JOIST \_\_\_\_\_ SJ1 \_\_\_\_\_ 100 PFC @ MAX. 600 CTS - NON - COMBUSTIBLE FLOORING IS TO BE SELECTED. SJ1 STEEL JOISTS MAY BE NEEDED TO BE SPACED CLOSER TOGETHER TO SUPPORT CHOSEN FLOORING.

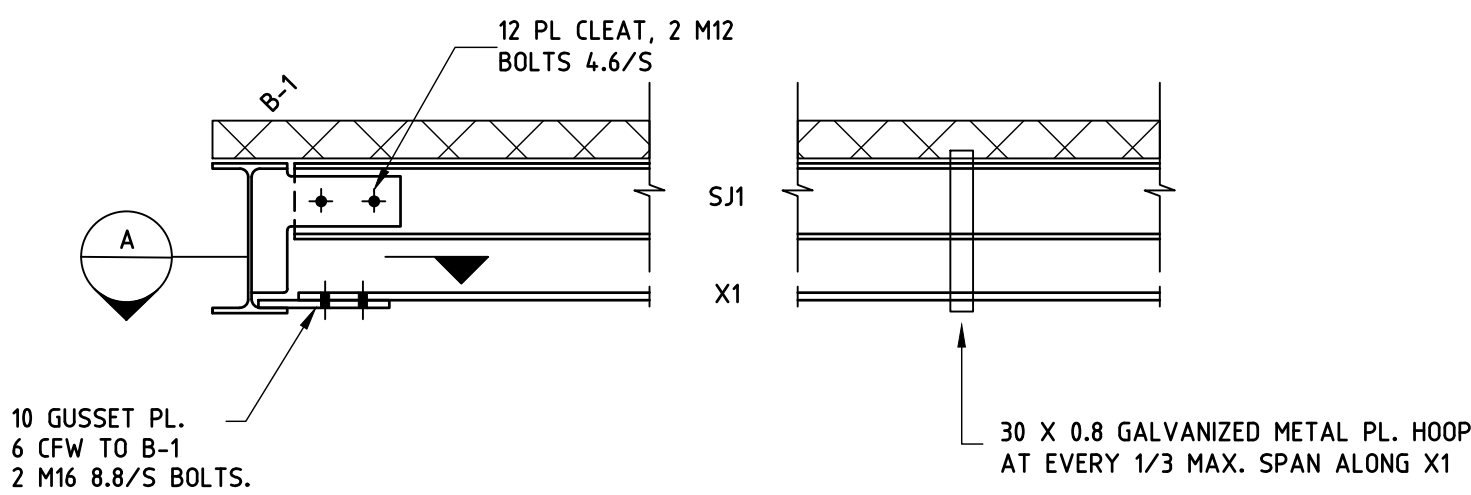
NOTE: ALL STEEL MEMBERS TO BE HOT DIP GALVANISED.

NOTE:

ALL GALVANISED STEEL WORK IS TO HAVE AN APPROVED COATING OF INTUMESCENT PAINT TO ACHIEVE AT LEAST A 30/30/30 FRL. REFER TO BUSH FIRE CONSULTANT REPORT BY BUSHFIRE HAZARD SOLUTIONS DATED 21<sup>ST</sup> JANUARY 2025. THE SURFACE OF THE STEEL IS TO BE LIGHTLY SAND BLASTED BEFORE INTUMESCENT COATING APPLICATION.

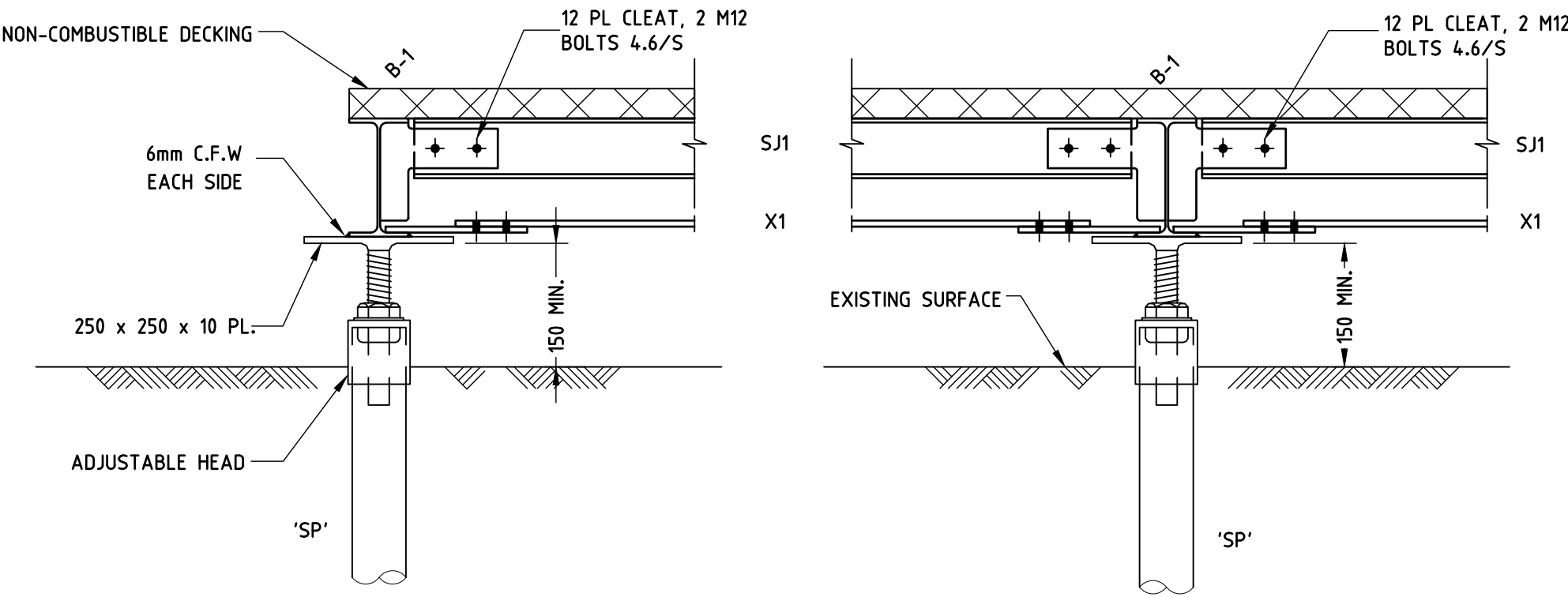


SECTION 1  
1 : 50

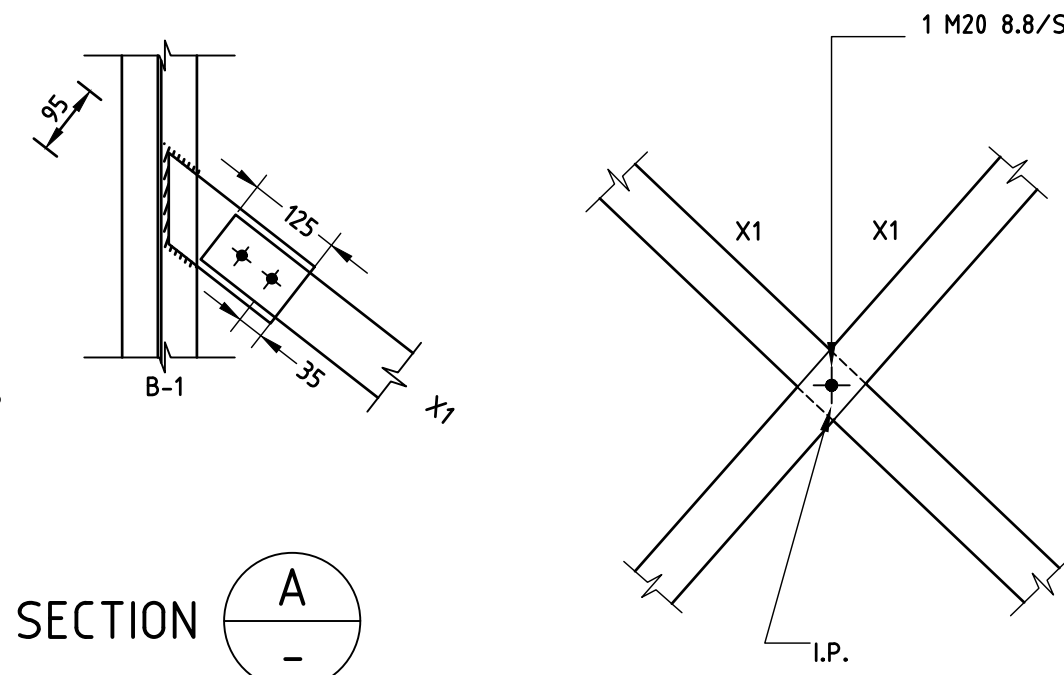


STEEL SCREW PILES NOT SHOWN FOR CLARITY  
TYPICAL BRACING DETAILS

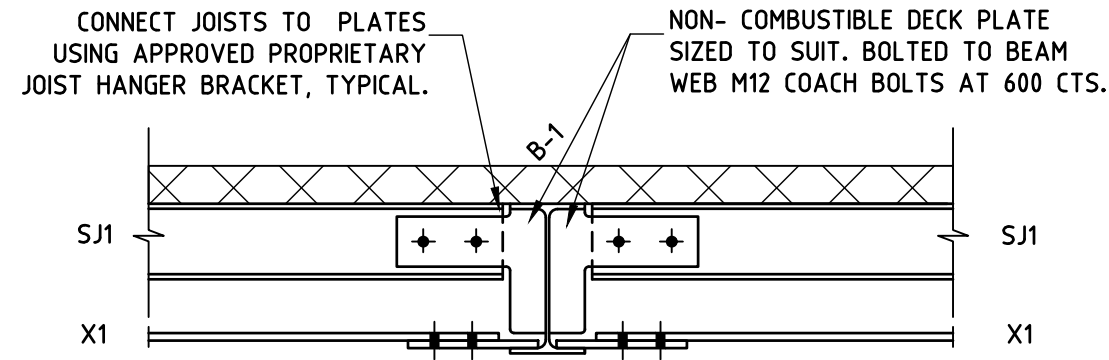
1 : 10  
NOTE:  
1- BRACING TO BE TIGHT, STRAIGHT AND CONTINUOUS UNLESS NOTED OTHERWISE.



DECK BRACING NOT SHOWN FOR CLARITY.  
TYPICAL PILE TO BEAM DETAILS  
1 : 10



SECTION A  
1 : 10



DECK BRACING AND SCREW PILES NOT SHOWN FOR CLARITY.  
TYPICAL STEEL JOIST TO STEEL BEAM DETAIL  
1 : 10

No.	Date	Description	Ver.	Appr.
A	25.01.24	ISSUED FOR APPROVAL / CONSTRUCTION	JG	SDC
B	28.03.24	NOTE ADDED	JG	SDC
C	19.03.25	ISSUED FOR APPROVAL	AL	SDC
D	13.06.25	EASTERN BOUNDARY WALL NOTES REVISED	AL	SDC

Client  
STRATA PLAN 81259

**Woolacotts.**  
CONSULTING ENGINEERS

T +61 2 8203 1500 | www.woolacotts.com.au  
Suite 6.02 Level 6, 67 Albert Ave, Chatswood NSW 2067  
This drawing is copyright and must not be used, reproduced or copied wholly or in part without written permission of Woolacotts Consulting Engineers Pty Ltd.

STRUCTURAL INVESTIGATION OF  
FAILED BOUNDARY RETAINING WALL  
AT 60 ALEXANDER STREET COLLAROY

FLOOR PART PLAN,  
SECTION AND DETAILS

Date	Approved	Verified	Prepared
NOVEMBER 2023	S.D.C.	J.G.	R.K.H.
Scale @ A1 1:50 , 1:10	25.01.24	25.01.24	06.11.23
Job number	Drawing number	Amendment	
23-14	S2	D	