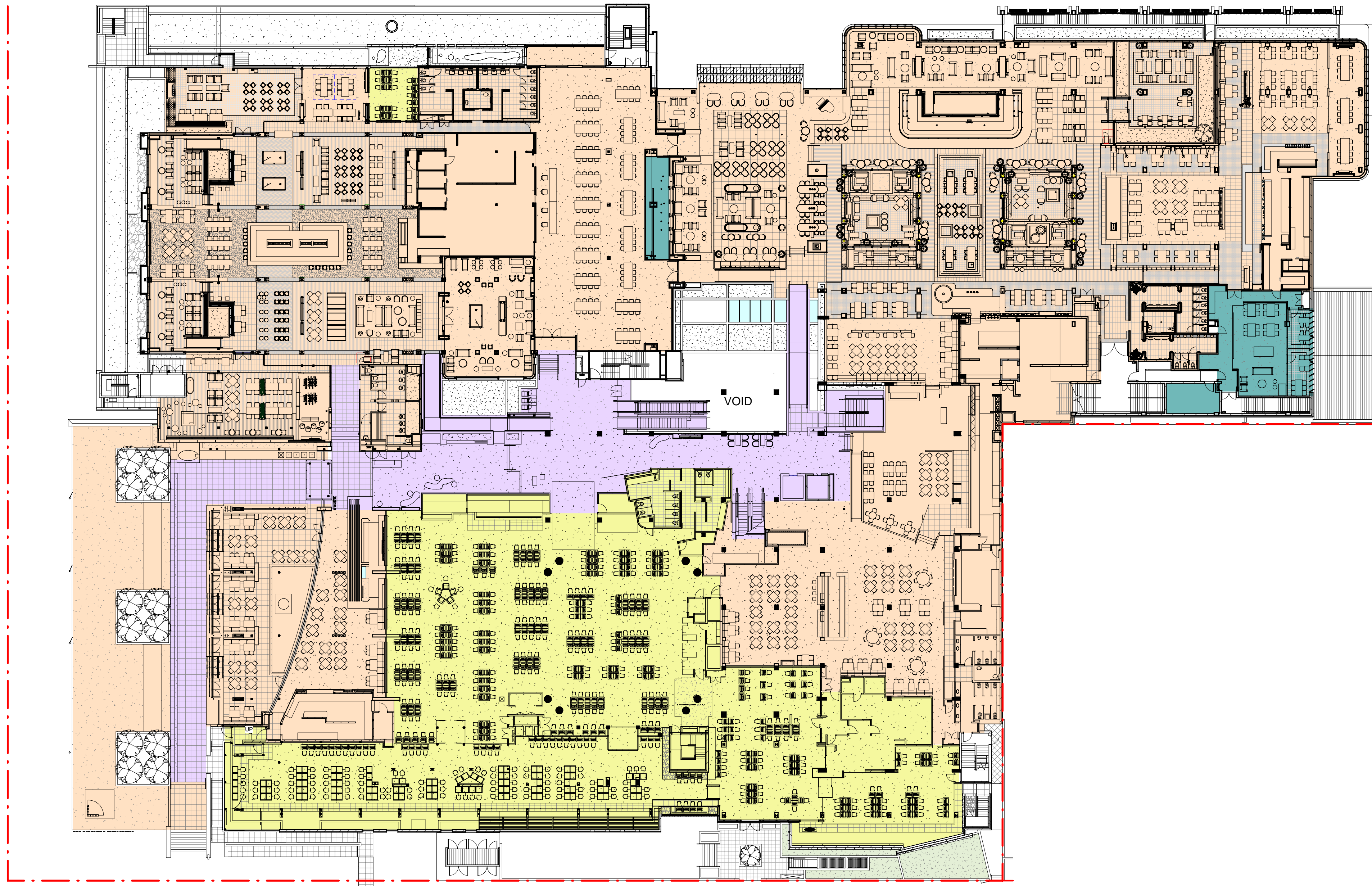
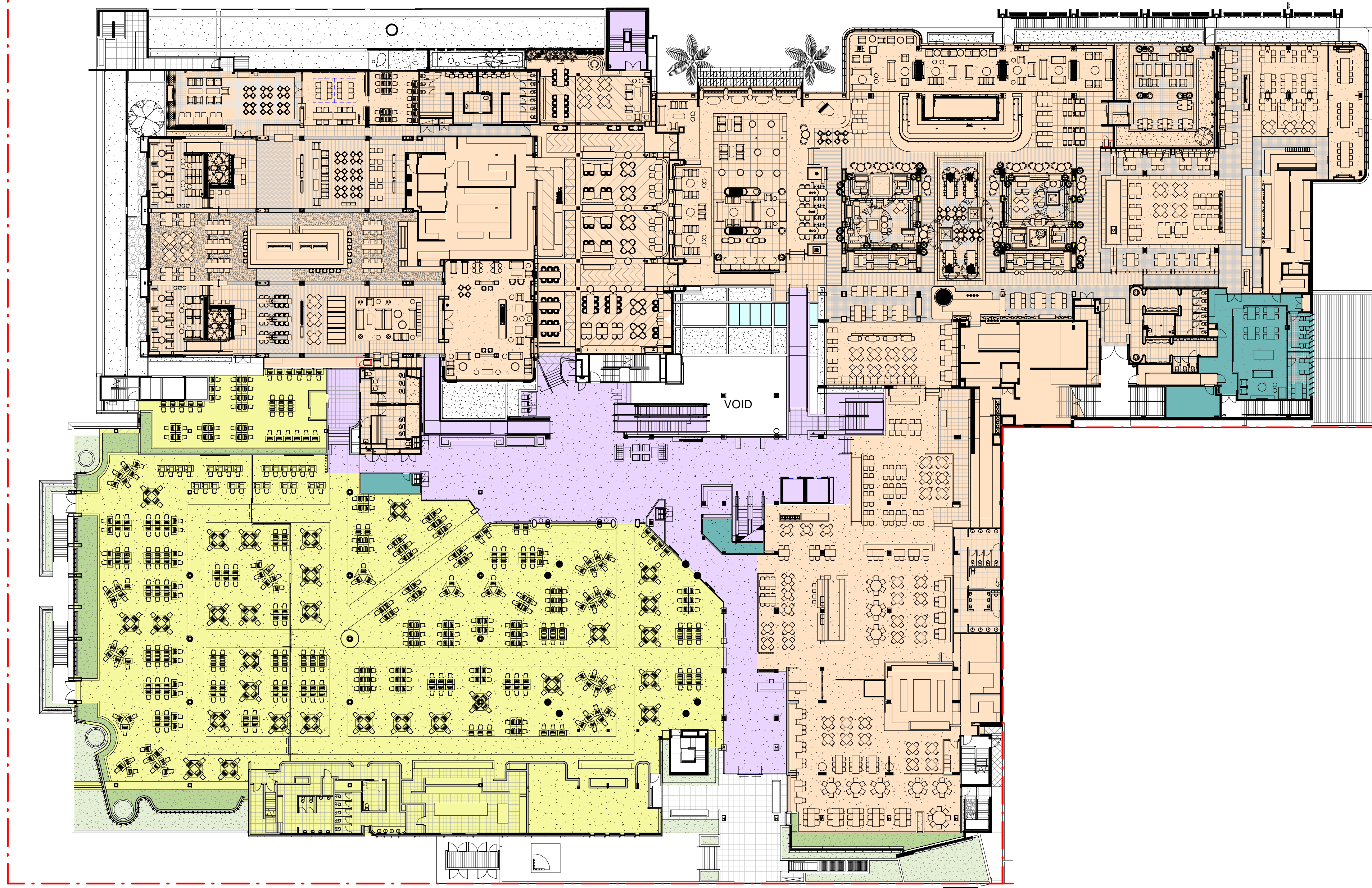


[illegible]

LEGEND

- FOOD AND BEVERAGE / FUNCTIONS
- CIRCULATION
- GAMING AREAS
- BACK OF HOUSE

2 EXISTING LEVEL 2 FURNITURE AND GAMING LAYOUT
Scale: 1 : 300



1 PROPOSED LEVEL 2 FURNITURE AND GAMING LAYOUT
Scale: 1 : 300

CLIENT:

D E E
W H Y
R S L

PROJECT:

STAGE 7 - NORTHWEST
ALTERATIONS AND ADDITIONS

ARCHITECT:

ALTIS

ARCHITECTURE

DRAWING TITLE:

EXISTING AND PROPOSED
FURNITURE LAYOUT

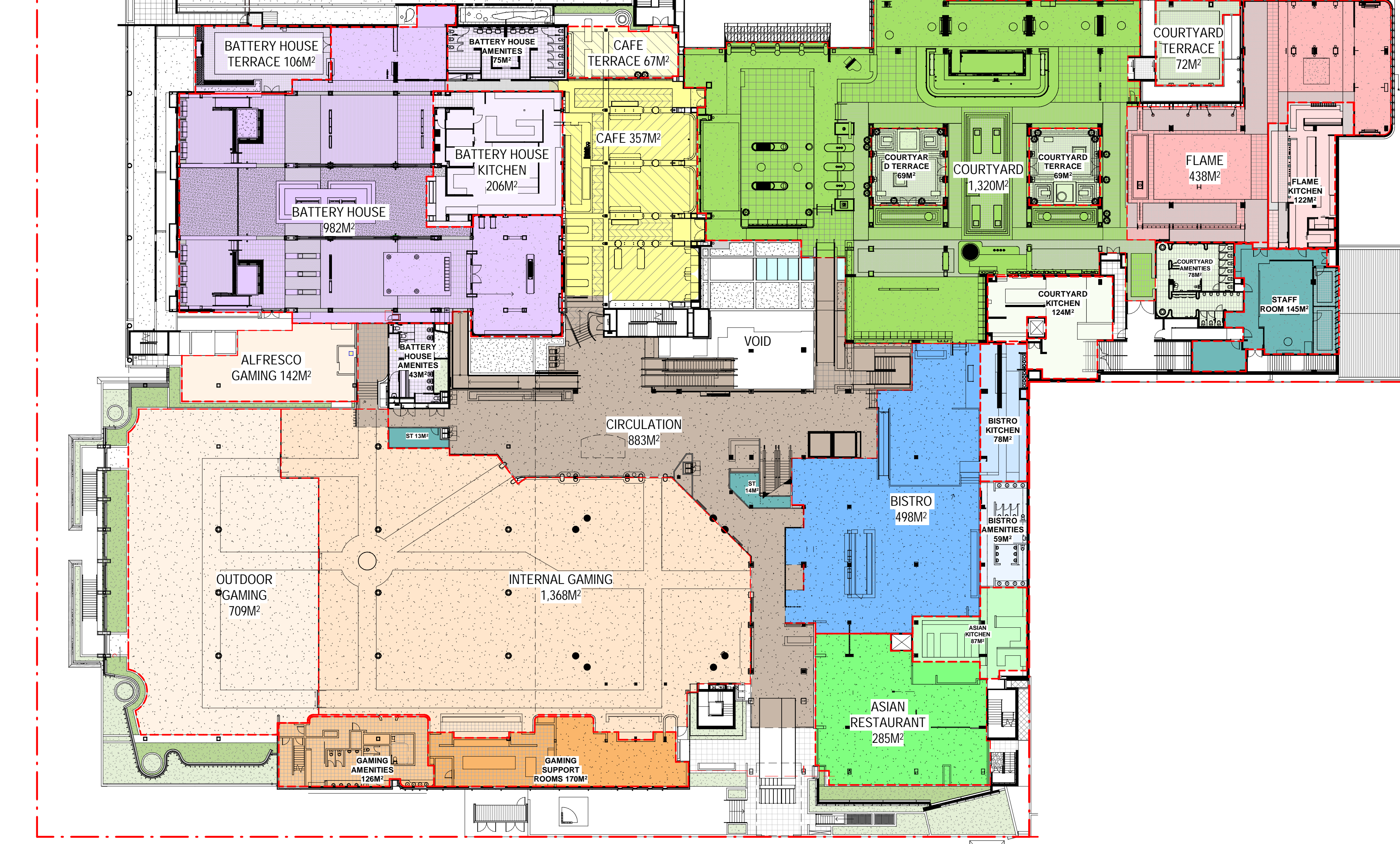
<p>NOTES:</p> <p>Nominated architect: Rollo Latimer : 5535</p> <p>Copyright remains the property of Atlas Architecture Pty Ltd.</p> <p>Use only figured dimensions.</p> <p>All discrepancies to be referred to Atlas Architecture Pty Ltd prior to construction.</p> <p>Ensures compliance with the Building Code of Australia and all relevant Australian Standards and Authority requirements.</p>	<p>NORTH</p>
--	--------------

SCALE: 1 : 300 @ A0			DATE: DECEMBER 2023	
DRAWN BY: Author	CHECKED BY: Checker	PROJECT NO: 2341.10	DRAWING NO: DA-SK3	ISSUE: A
CAD FILE:				

07/2025 2:34:46 PM



3 EXISTING LEVEL 2
Scale: 1:300



1 PROPOSED LEVEL 2
Scale: 1:300

LEVEL 2 AREA CATEGORY TOTALS			
BATTERY HOUSE (FOOD AND BEVERAGE VENUE)			
<div></div> INTERNAL AREA	EXISTING	PROPOSED	DIFFERENCE
<div></div> TERRACE AREA	982m ²	982m ²	-
<div></div> KITCHEN	261m ²	106m ²	(155m ²)
<div></div> AMENITIES	206m ²	206m ²	-
<div></div> TOTAL	118m ²	118m ²	-
<div></div> TOTAL	1,567m ²	1,412m ²	(155m ²)
CAFE (FOOD AND BEVERAGE VENUE)			
<div></div> INTERNAL AREA	EXISTING	PROPOSED	DIFFERENCE
<div></div> TERRACE AREA	174m ²	357m ²	183m ²
<div></div> TOTAL	175m ²	67m ²	(108m ²)
<div></div> TOTAL	349m ²	424m ²	75m ²
FUNCTION (FOOD AND BEVERAGE VENUE)			
<div></div> INTERNAL	EXISTING	PROPOSED	DIFFERENCE
<div></div> TOTAL	409m ²	0m ²	(409m ²)
<div></div> TOTAL	409m ²	0m ²	(409m ²)
COURTYARD (FOOD AND BEVERAGE VENUE)			
<div></div> INTERNAL	EXISTING	PROPOSED	DIFFERENCE
<div></div> TERRACE	1,320m ²	1,320m ²	-
<div></div> KITCHEN	210m ²	210m ²	-
<div></div> AMENITIES	124m ²	124m ²	-
<div></div> TOTAL	78m ²	78m ²	-
<div></div> TOTAL	1,732m ²	1,732m ²	-
FLAME DINING (FOOD AND BEVERAGE VENUE)			
<div></div> INTERNAL	EXISTING	PROPOSED	DIFFERENCE
<div></div> KITCHEN	438m ²	438m ²	-
<div></div> TOTAL	122m ²	122m ²	-
<div></div> TOTAL	560m ²	560m ²	-
BISTRO (FOOD AND BEVERAGE VENUE)			
<div></div> INTERNAL	EXISTING	PROPOSED	DIFFERENCE
<div></div> KITCHEN	562m ²	498m ²	(64m ²)
<div></div> AMENITIES	116m ²	78m ²	(38m ²)
<div></div> TOTAL	46m ²	59m ²	13m ²
<div></div> TOTAL	724m ²	635m ²	(89m ²)
ASIAN RESTAURANT (FOOD AND BEVERAGE VENUE)			
<div></div> INTERNAL	EXISTING	PROPOSED	DIFFERENCE
<div></div> KITCHEN	-	285m ²	285m ²
<div></div> TOTAL	-	87m ²	87m ²
<div></div> TOTAL	-	372m ²	372m ²
GAMING (GAMING)			
<div></div> INTERNAL	EXISTING	PROPOSED	DIFFERENCE
<div></div> ALFRESCO	1,089m ²	1,368m ²	279m ²
<div></div> GAMING AREA	590m ²	851m ²	261m ²
<div></div> TOTAL	1,679m ²	2,219m ²	540m ²
<div></div> AMENITIES	65m ²	126m ²	61m ²
<div></div> SUPPORT ROOMS	157m ²	170m ²	13m ²
<div></div> TOTAL	1,901m ²	2,515m ²	614m ²
OTHER			
<div></div> OUTDOOR FUNCTION AREA (NOTE 1)	EXISTING	PROPOSED	DIFFERENCE
<div></div> CIRCULATION	429m ²	0m ²	(429m ²)
<div></div> STORAGE	868m ²	883m ²	15m ²
<div></div> STAFF AREA	29m ²	27m ²	(2m ²)
<div></div> TOTAL	145m ²	145m ²	-
<div></div> TOTAL	1,471m ²	1,055m ²	(416m ²)
TOTAL AREAS			
<div></div> EXISTING	8,713m ²	8,705m ²	(8m ²)
<div></div> PROPOSED			
<div></div> DIFFERENCE			

NOTE 1 - OUTDOOR FUNCTION AREA INCLUDED IN THE TOTALS IN THE TABLE ABOVE AS IT IS PART OF THE LICENSED AREA. THE OUTDOOR FUNCTION AREA HAS NOT BEEN INCLUDED IN GROSS FLOOR AREA CALCULATIONS ON DRAWINGS DA-4000 AND DA-4001 THAT WERE SENT AS PART OF THE ORIGINAL DA SUBMISSION TERRACES WITH WALLS THAT ARE LESS THAN 1.4m HIGH. IN ACCORDANCE WITH THE WARRINGAH LEP 2011 DICTIONARY DEFINITION OF GROSS FLOOR AREA.

CLIENT
DEE WHY RSL

PROJECT
STAGE 7 - NORTHWEST ALTERATIONS AND ADDITIONS

ARCHITECT
ALTIS ARCHITECTURE

DRAWING TITLE
AREA PLANS - LEVEL 2

NOTES:
Nominated architect: Riddle Latham - 5535
Copyright remains the property of Altis Architecture Pty Ltd.
Use only for the purposes of the development application.
All dimensions to be confirmed by Altis Architecture Pty Ltd prior to construction.
Drawings comply with the Building Code of Australia and all relevant Australian Standards and Authority requirements.

SCALE: 1:300	@ A0	DATE: DECEMBER 2023
DRAWN BY: MC	CHECKED BY: DC / LS	PROJECT NO: 2341.10
CAD FILE:	DRAWING NO: DA-SK6	ISSUE: A

