

1 SITE PLAN

- Existing Building Area
- Proposed Building Area



1 Forestway Elevation - Part 1
1:400



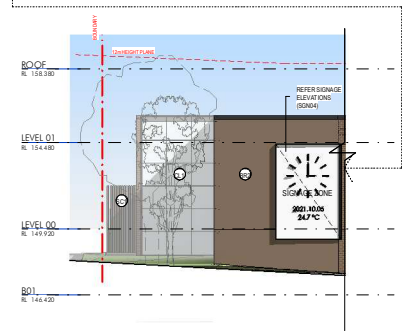
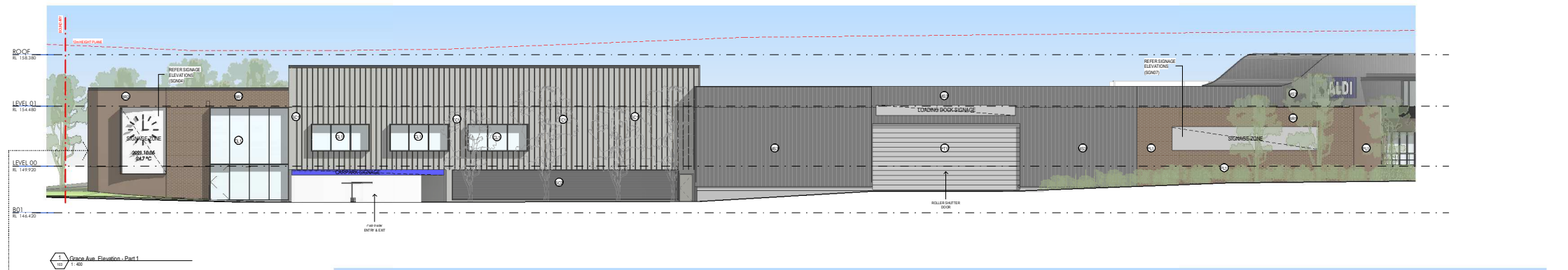
2 Forestway Elevation - Part 2
1:400



3 Russell Ave Elevation
1:400

- | | | | | | |
|---|---|---|---|-----------------------------|---|
| WB1: Weatherboard cladding, colour: "Cove" or similar | BR1: Brick cladding, Bowral Blue or similar | ST1: Sandstone wall cladding or similar | MS1: Metal sheet cladding, colour: "Monument" or similar | GL1: Clazing (Clear/Tinted) | SC1: Timber Look Battens Screen |
| WB2: Weatherboard cladding, colour: "Surfmist" or similar | BR2: Brick cladding, Bowral Blue with Hit & Miss relief | PT1: Powdercoated/painted finish, colour: "Monument" or similar | MS2: Metal sheet cladding, colour: "Jasper" or similar | GL2: Glazing (Louvres) | SC2: Metal Louvre Screen, Mixed Muted Colour. |
| WB3: Weatherboard cladding, colour: "Gully" or similar | BR3: Wall Paint / Mural Art Wall to future detail | FC1: Fibre Cement Cladding, colour: Concrete or similar | MS3: Metal sheet cladding, colour: "Woodland Grey" or similar | PL1: Landscape Trellis | |

Material Legend



- | | | | | | |
|---|---|---|---|-----------------------------|---|
| WB1: Weatherboard cladding, colour: "Cove" or similar | BR1: Brick cladding, Bowral Blue or similar | ST1: Sandstone wall cladding or similar | MS1: Metal sheet cladding, colour: "Monument" or similar | GL1: Clazing (Clear/Tinted) | SC1: Timber Look Battens Screen |
| WB2: Weatherboard cladding, colour: "Surfmist" or similar | BR2: Brick cladding, Bowral Blue with Hit & Miss relief | PT1: Powdercoated/painted finish, colour: "Monument" or similar | MS2: Metal sheet cladding, colour: "Jasper" or similar | GL2: Glazing (Louvres) | SC2: Metal Louvre Screen, Mixed Muted Colour. |
| WB3: Weatherboard cladding, colour: "Gully" or similar | BR3: Wall Paint / Mural Art Wall to future detail | FC1: Fibre Cement Cladding, colour: Concrete or similar | MS3: Metal sheet cladding, colour: "Woodland Grey" or similar | PL1: Landscape Trellis | |

Material Legend

REVELOP

Project Name
FORESTWAY SHOPPING CENTRE
Project Address
22 Forest Way Frenchs Forest NSW

Key Plan
0 800 2000

Neighborhood Notification - Building
Elevations Sheet 2
VR ES A4 VARES
11993_DA-803 P1

nettletontribe
nettletontribe partnership pty ltd AEN 58 161 683 122
117 Pitt Street West, Crown Hall, NSW 2060
t: 02 9435 4543
e: info@nettletontribe.com.au or nettletontribe.com.au

