

JACKSONS NATURE WORKS

34 CALOOLA CRESCENT, BEVERLY HILLS 2209

9 150 4430
04 18) 414 502

ARBORICULTURAL IMPACT ASSESSMENT REPORT

At

59 Crescent Road, Newport

Prepared for

Mr & Mrs B Morgan

22nd February 2022

Prepared by: Ross Jackson

Graduate Certificate in Arboriculture (AQF L 8)

Dip. Horticulture (Arboriculture – AQF L 5)

Certificate III in Horticulture (Arboriculture)

Certificate in Horticulture (Landscape)

Member of the Arboriculture Australia (MAA)

Member of the Australian Institute of Horticulture

Consulting Arborist Nos.1695

E: jacksonsnatureworks@bigpond.com

<h2>DISCLAIMER</h2>

The Client acknowledges that this Report, and any opinions, advice or recommendations expressed or given in it, are the information supplied by the Client and on the data inspections, measurements and analysis carried out or obtained by Jacksons Nature Works (JNW) and referred to in the Report. The Client should rely on The Report, and on its contents, only to that extent.

Care has been taken to obtain all information from reliable sources. All data has been verified as far as possible. However, Ross Jackson – Consulting Arborist can neither guarantee nor be responsible for the accuracy of information provided by others.

Unless stated otherwise:

- Information contained in this report covers only the trees examined and reflects the health and structure of the trees at the time of inspection. The documented, observations, results, recommendations and conclusions given may vary after the site visit due to environmental conditions.
- The inspection was limited to visual examination from the base of the subject tree without dissection, probing or coring.
- There is no warranty or guarantee, expressed or implied, that problems or deficiencies of the subject trees may not arise in the future; &
- Unauthorised use of this report in any form is prohibited and remains the intellectual property of Jacksons Nature Works until all costs are settled.

Ross Jackson

Consulting Arborist

Table of Contents

1. Background and Methodology	4
2. Observations.....	5
3. Discussions	5
4. Recommendations.....	8
Annexure A: Observations	10
Annexure B: Tree location plan	13
Annexure C: Tree impact plan.....	14
Annexure D: Typical trunk protection.....	16

1. BACKGROUND and METHODOLOGY

- 1.1 The purpose of this Tree Report is to inform and accompany the development application works at 59 Crescent Road, Newport – The Site.
- 1.2 The report was commissioned by to respond to Council's requirements to consider the development impacts on trees located on and around the Site.
- 1.3 This report outlines the health and condition of the subject trees, the remaining life expectancy of the trees, identifies any visible defects or other problems, describes which trees require pruning, removal, retention or represent a potential hazard and comments on the impact on these trees in relation to the works proposed. The report also provides recommended tree protection measures (Tree Management Plan) to ensure the long-term preservation of the trees to be retained where appropriate.
- 1.4 The Site is a l site with gardens at .
- 1.5 The trees were identified by ground level Visual Tree Assessment (VTA) ¹ only in the data collection, taken on 8.7.2021. No aerial (climbing) was undertaken.
- 1.6 All site photographs were taken by the author at the site. All photographs were taken using a digital camera (Canon 7D) with no image enhancement either within the camera or on computer.
- 1.7 The subject trees were located on plans supplied. The trees have been plotted and can be found on Annexure B – Tree Location Plan.
- 1.8 The trees were identified and their genus species and common name used. The trees were identified by the use of data collected and compared to G Burnie, S Forrester et al (1997) **Botanica** Random House, Milsons Point, NSW, Australia.
- 1.9 DBH. The Trunk Diameter at Breast Height (1.4 metres above ground level) in centimetres was measured over bark using a metal tape which automatically converts to diameter and assumes a circular trunk cross section.
- 1.10 DRB. The trunk Diameter above Root Buttress in centimetres was measured over bark using a metal tape which automatically converts to diameter and assumes a circular trunk cross section.
- 1.11 Height. Estimated overall height in metres.
- 1.12 Spread. Measured with a metal tape measure and shown in metres.
- 1.13 Useful Life Expectancy (ULE)².
A systematic pre-development tree assessment procedure developed by Jeremy Barrell, Hampshire, England. It gives a length of time that the Arborist feels a particular tree can be retained with an acceptable level of risk based on the

¹ Mattheck, Dr. Clause & Breloer, Helge (1994) – Sixth Edition (2001) **The Body Language of Trees – A Handbook for Failure Analysis** The Stationery Office, London, England

² Barrell, Jeremy (1996, 2001) **Pre-development Tree Assessment** Proceedings of the International Conference on Trees and Building Sites (Chicago) International Society of Arboriculture, Illinois, USA

information available at the time of the inspection. SULE ratings are Long (retainable for 40 years or more with an acceptable level of risk), Medium, (retainable for 16 – 39 years), Short (retainable for 5 – 15 years) and Removal (tree requiring immediate removal due to imminent hazard or absolute unsuitability).

1.14 The Tree Protection Zone (TPZ) and Structural Root Zone (SRZ) have been calculated in terms of AS 4970 – 2009 Protection of trees on development site Section 3.

1.15 To prepare this report we have reviewed the following documents:

- Detail survey by Byrne & Associates Pty Limited dated 26.8.2021.
- Architectural plans by SDA dated 14.1.2022.
- Northern Beaches Council, B4.22 Preservation of Trees or Bushland Vegetation (TPO); &
- Australian Standard AS 4970 – 2009 Protection of trees on development sites.

2. OBSERVATIONS as seen on the days of inspection (8.7.2021)

2.1 Our tree observations can be found in Annexure A.

3. DISCUSSIONS

3.1 We have been commissioned by Mr Morgan, to examine the health and condition of the trees on and around this development site.

It is proposed to undertake alterations and additions to existing on Site (development works).

3.2 We have examined the trees on site and can suggest the following considerations for the development works:

1. The following trees are located within the proposed extension: Tree 1 *Eucalyptus punctata*, tree 2 *Syncarpia glomulifera*, tree 3 *Eucalyptus resinifera* and tree 4 *Eucalyptus microcorys*, all these trees show good vitality with trees 1 & 3 having evidence of canopy pruning – refer plate 1 & 2.

All of these trees except tree 4 (Northern NSW & Queensland) are endemic to the area.

Removal of these trees is required to undertake the proposed development works.

However, it is note eight trees are being retained that are endemic to this locality (Tree 5, 6, 7, 9, 10, 11, 12 & 15) and will ensure the biodiversity at this site.

Note Trees 1, 2, 3 & 4 for removal in the Tree Management Plan (TMP).



Plate 1: Trunks of trees 1, 2, 3 & 4.



Plate 2: Canopies of trees 1, 2, 3 & 4.

2. Tree 5 *Eucalyptus punctata* is showing good vitality and stability – refer plate 3.

It is acknowledged the existing driveway will be partially removed adjacent to this tree – refer Annexure C. However, these works will have little or no impact on this tree as the works are over the existing driveway footprint.

Retention and protection of this tree is proposed as part of the development works.

Note this tree for retention and protection in the TMP.



Plate 3: Tree 5 with existing driveway around this tree.

3. The following trees are located in the front of the Site: Tree 6 *Eucalyptus punctata*, tree 7 *Casuarina cunninghamiana*, tree 8 *Eucalyptus microcorys*, tree 9 *Livistona australis* (street tree), tree 10 *Livistona australis* (next door), tree 11 *Eucalyptus paniculata*, tree 12 *Syncarpia glomulifera*, tree 13 *Syagrus romanzoffiana* (next door).

All of these trees will be retained as part of the development works.

The driveway will be removed and re-laid near Trees 11 & 12 with an increased separation from these trees – refer Annexure C.

Plus, a retaining wall and driveway will be constructed and excavated near Tree 13, all at the edge of this tree's TPZ, thus ensuring retention.

Note all these trees for retention and protection in the TMP.

4. The following trees are located in the rear yard: Tree 14 *Archontophoenix cunninghamiana* (Exempt species), tree 15 *Eucalyptus saligna* (protected species),

tree 16 *Syagrus romanzoffiana* (Exempt species), *Archontophoenix cunninghamiana* x 10 (Exempt species), *Dypsis lutescens* (Exempt species – clump) and *Livistona australis* x 2 (Protected species), tree 17 *Ficus benjamina* x 2 (Exempt species) and tree 18 *Ficus microcarpa* var. *Hillii* (Exempt species).

The development works are outside these tree's TPZ, thus ensuring retention.

However, the owners may choose to remove the Exempt trees to avoid undesirable species in the rear yard and to provide space for replanting of endemic species.

A site arborist will need to note which trees are Exempt and which trees are protected to ensure the retention of Trees 15 & 16.

Note the Exempt trees for removal and the retention of Trees 15 & 16 (Cabbage Palms) in the TMP.

4. RECOMMENDATIONS

The following recommendations are advised:

- a) Retain the following council street tree: Tree 9.
- b) Remove the following tree on site: Tree 1, 2, 3, 4, 14, 16 (Except the Cabbage Palms), 17 & 18.
- c) Retain the following trees on site: Tree 5, 6, 7, 8, 11, 12, 15 & 16 (Cabbage Palm).
- d) Retain the following neighbour's trees: Tree 10 & 13.
- e) Tree removal work shall be carried out by an experienced tree surgeon in accordance with *Safe Work Australia Guide for Managing Risks of Tree Trimming and Removal (2016)*.
- f) Install the following Tree Protection Measures around the retained street tree: Tree 9, tree protection measures shall be a temporary fence of chain wire panels 1.8 metres in height (or equivalent), supported by steel stakes or concrete blocks as required and fastened together and supported to prevent sideways movement. Existing boundary fences or walls are to be retained shall constitute part of the tree protection fence where appropriate. A sign is to be erected on the tree protection fences of the trees to be retained that the trees are covered by Council's tree preservation orders and that "No Access" is permitted into the tree protection zone – refer Annexure D.
- g) Trunk protection shall consist of a padding material such as hessian or thick carpet underlay wrapped around the trunk. Timber planks (50mm x 100mm or similar) shall be placed over the padding and around the trunk of the tree at 150mm centres. The planks shall be secured with 8-gauge wire or hoop steel at 300mm spacing. Trunk protection shall extend a minimum height of 2 metres on Tree 5, 11, 12 – refer Annexure D.
- h) Install the following Tree Protection Measures around the retained trees: Trees 5, 6, 7, 8, 9, 10, 11, 12, 13, tree protection measures shall be a temporary fence of chain wire panels 1.8 metres in height (or equivalent), supported by steel stakes or concrete blocks as required and fastened together and supported to prevent sideways movement. A sign is to be erected on the tree protection fences of the trees to be retained that the trees are covered by Council's tree preservation orders and that "No Access" is permitted into the tree protection zone – refer Annexure D.

- i) That a Tree Management Plan be prepared as part of the Construction Certificate by a consulting arborist who holds the Diploma in Horticulture (Arboriculture), Level 5 or above under the Australian Qualification Framework.
- j) An AQF Level 5 Project Arborist shall be engaged to supervise the building works and certify compliance with all Tree Protection Measures.
- k) The tree location plan can be found on Annexure B; &
- l) The tree impact plan can be found on Annexure C.



Ross Jackson M.A.A. & M.A.I.H.
Consulting Arborist 1695
Graduate Certificate in Arboriculture AQF Level 8
Diploma Horticulture (Arboriculture) – AQF Level 5
Certificate III in Horticulture
Certificate in Horticulture (Landscape – Honours)

Annexure A: Observations as seen on the day of inspection of trees

Tree No	Botanical Name	Age Class	Height (m)	Spread (m)	D.B.H. (cm)	D.R.B. (cm)	TPZ (radius m)	SRZ (radius m)	Condition comments as seen on site	ULE
1	<i>Eucalyptus paniculata</i>	M	14	8	45	55	5.4	2.6	G vitality, previous branch pruned away from over roof	1
2	<i>Syncarpia glomulifera</i>	M	10	6	25, 35	75	5.2	2.9	G vitality, suppressed	1
3	<i>Eucalyptus resinifera</i>	M	14	10	50	60	6.0	2.7	G vitality, previous branch pruned away from over roof	1
4	<i>Eucalyptus microcorys</i>	M	12	10	45	55	5.4	2.6	G vitality	1
5	<i>Eucalyptus punctata</i>	M	10	6	30	40	3.6	2.3	G vitality	1
6	<i>Eucalyptus punctata</i>	M	10	2	20	25	2.4	1.8	G vitality, pole-like	1
7	<i>Casuarina cunninghamiana</i>	M	10	4	30	40	3.6	2.3	G vitality	1
8	<i>Eucalyptus microcorys</i>	M	10	8	45	50	5.4	2.5	G vitality	1
9	<i>Livistona australis</i>	M	6	-	-	-	-	-	G vitality. ST.	1
10	<i>Livistona australis</i>	M	8	-	-	-	-	-	G vitality. N.D.	1
11	<i>Eucalyptus paniculata</i>	M	12	8	40	45	4.8	2.4	G vitality	1
12	<i>Syncarpia glomulifera</i>	M	10	6	20, 30	40	4.3	2.3	G vitality	1
13	<i>Syagrus romanzoffiana</i>	M	9	3	-	-	3	-	G vitality. ND.	2
14	<i>Archontophoenix cunninghamiana</i> x3	M	4	-	-	-	-	-	G vitality	2
15	<i>Eucalyptus saligna</i>	M	14	10	60	70	7.2	2.8	G vitality	1
16	<i>Syagrus romanzoffiana</i> x10, <i>Archontophoenix cunninghamiana</i> x2, <i>Livistona australis</i> x2, <i>Dyopsis lutescens</i> (clump)	M	-	-	-	-	-	-	G vitality. Cocos Palms, Golden Cane & Bangalow Exempt trees.	2
17	<i>Ficus benjamina</i>	M	6	4	??	??	??	??	Exempt species	4
18	<i>Ficus microcarpa</i> var. <i>hillii</i>	M	6	4	??	??	??	??	Exempt species	4

Terms used in Tree Survey & Report: Age Class

(Y) – Young refers to a well-established but juvenile tree. Less than 1/3 life expectancy

(SM) – Semi-mature refers to a tree at growth stages between immaturity and full size. A tree has reached First Adult Form i.e. displays adult characteristics. 1/3 to 2/3 life expectancy

(M)- Mature refers to a full size tree with some capacity for future growth. Older than 2/3 life expectancy

(OM) – Over-mature refers to a tree approaching decline or already declining. Older than 2/3 life expectancy and showing signs of irreversible decline.

Health refers to a tree's vigour, growth rate, disease and/or insects.

Vitality summarises observations about the health and structure of the tree on a scale of: **(G) Good, (F) Fair, (P) Poor & (D) Dead.**

Good: Tree is generally healthy and free from obvious signs of structural weaknesses or significant effects of pests and diseases or infection;

Fair: Tree is generally vigorous although has some indication of being adversely affected by the early effects of disease or infection or environmental or mechanical damage. Appropriate tree maintenance can usually improve overall health and halt decline;

Poor: Tree in decline and is not likely to improve with reasonable maintenance practices or has a structural fault such as bark inclusion;

Dead: Tree no longer capable of sustained growth.

Deadwood (DW) – deadwood found in canopy as a percentage.

Over Head Power Lines (OHPL) – upper canopy pruned to accommodate power lines at a given height.

Height expressed in metres refers to estimated overall height of tree.

Next Door tree (ND) – tree located in the neighbour's property.

Street Tree (ST) – tree located in Councils footpath reserve.

Spread expressed in metres refers to estimated spread of crown at the drip line.

(DBH) Diameter at Breast Height expressed in millimetres refers to the trunk diameter at 1.4 metres above ground level. Where there are multiple trunks the combined diameter has been calculated in terms of Appendix A – AS 4970 – 2009, shown in brackets.

(DRB) Diameter above Root Buttress expressed in millimetres refers to the trunk diameter above root buttress.

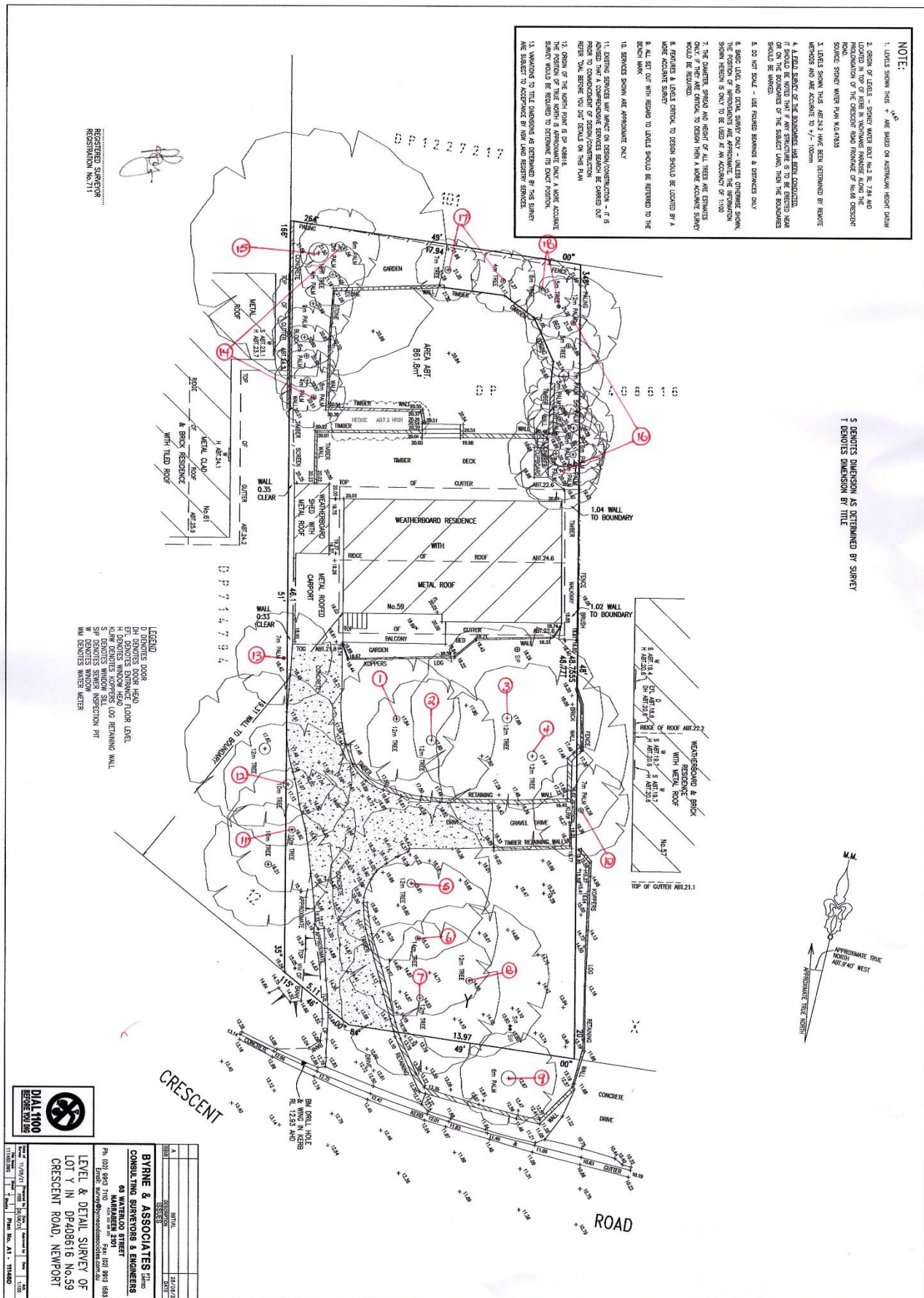
(TPZ) Tree Protection Zone & Structural Root Zone (SRZ) as defined by AS 4970 – 2009 Section 3

(ULE) The various ULE categories indicate the useful life anticipated for an individual tree or trees assessed as a group. Factors such as the location, age, condition and vitality of the tree are significant to the determination of this rating. Other influences such as the tree's effect on better specimens and the economics of managing the tree successfully in its location are also relevant to ULE (Barrell 1993, 1995, 2001).

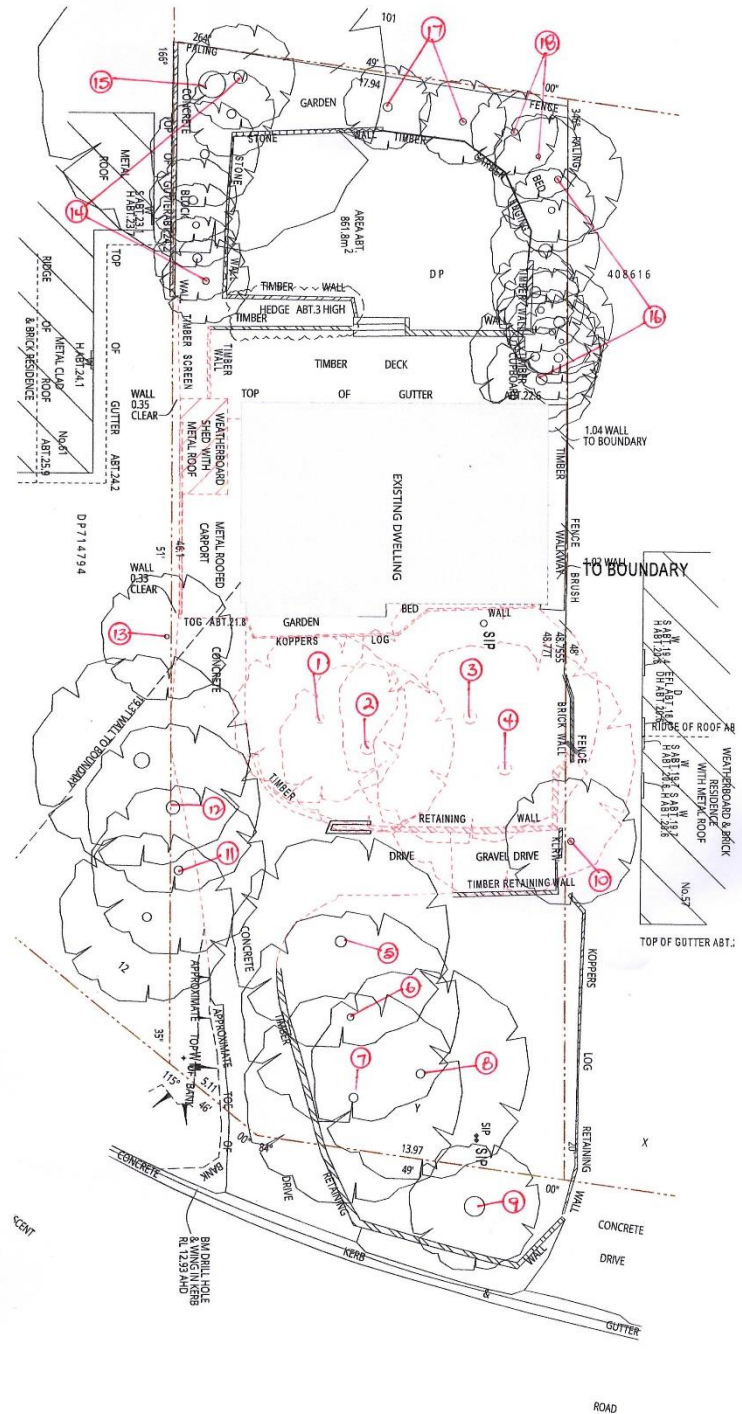
ULE RATING (UPDATED 1/4/01) BARRELL

1.Long ULE: Trees that appear to be retainable at the time of assessment for more than 40 years with an acceptable level of risk.	2.Medium ULE: Trees that appear to be retainable at the time of assessment for more than 15-40 years with an acceptable level of risk.	3.Short ULE: Trees that appear to be retainable at the time of assessment for more than 5-15 years with an acceptable level of risk.	4.Remove: Trees that should be removed within the next 5 years.	5.Small, young or regularly pruned: Trees that can be reliably moved or replaced.
(A) Structurally sound trees located in positions that can accommodate future growth	(A) Trees that may only live between 15 and 40 more years.	(A) Trees that may only live between 5 and 15 more years.	(A) Dead, dying, suppressed or declining trees because of disease or inhospitable conditions.	(A) Small trees less than 5 Metres in height.
(B) Trees that could be made suitable for retention in the long term by remedial tree care.	(B) Trees that could live for more than 40 years but may be removed for safety or nuisance reasons.	(B) Trees that could live for more than 15 years but may be removed for safety or nuisance reasons.	(B) Dangerous trees because of instability or recent loss of adjacent trees.	(B) Young trees less than 15 years old but over 5 metres in height.
(C) Trees of special significance for historical, commemorative or rarity reasons that would warrant extraordinary efforts to secure their long term retention.	(C) Trees that could live for more than 40 years but may be removed to prevent interference with more suitable individuals or to provide space for new planting.	(C) Trees that could live for more than 15 years but may be removed to prevent interference with more suitable individuals or to provide space for new planting.	(C) Dangerous trees because of structural defects including cavities, decay, included bark, wounds or poor form.	(C) Formal hedges and trees intended for regular pruning to artificially control growth.
	(D) Trees that could be made suitable for retention in the medium term by remedial tree care.	(D) Trees that require substantial remedial tree care and are only suitable for retention in the short term.	(D) Damaged trees that are clearly not safe to retain.	
			(E) Trees that could live for more than 5 years but may be removed to prevent interference with more suitable individuals or to provide space for new planting.	
			(F) Trees that are damaging or may cause damage to existing structures within 5 years.	
			(G) Trees that will become dangerous after removal of other trees for the reasons given in (A) to (F).	
			(H) Trees in categories (A) to (G) that have a high wildlife habitat value and, with appropriate treatment, could be retained subject to regular review.	

Annexure B: Tree location plan



Annexure C: Tree impact plans



Information contained in this document is copyright and may be used or reproduced by any other person without the written consent of the author. The author accepts no liability for any loss or damage, whether direct or indirect, arising from the use of the information contained in this document. The information is provided for general information only and is not intended to be used for any specific purpose. The information is provided on an 'as is' basis and the author makes no representation or warranty, express or implied, as to the accuracy or completeness of the information. The information is provided for the use of the client and the client is responsible for the use of the information. The information is provided for the use of the client and the client is responsible for the use of the information.

TO BE DEMOLISHED

TO BE RETAINED



P +61 2 4969 3631
E HELLO@SDARCH.COM.AU
A SUITE 1 LEVEL 1, 187 UNION ST, THE LUNJON NSW 2291
SDARCH.COM.AU

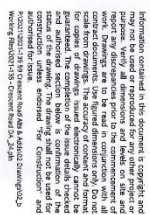
NO.	DESCRIPTION	DATE	STATUS
01	EXISTING DWELLING	2021-1-23	ISSUED
02	EXISTING DWELLING	2021-1-23	ISSUED

PROJECT
NEWPORT HOUSE
CLIENT
ALAN MORGAN

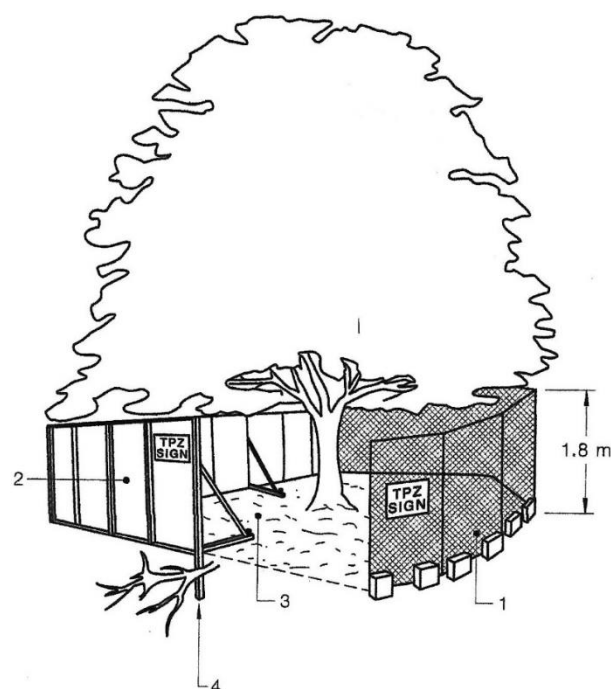
DRAWING
EXISTING 1 DEMOLITION
SITE PLAN
PROJECT NO.
2021-1-23

LOCATION
59 CRESCENT ROAD NEWPORT NSW
DRAWING NO.
DD102
ISSUE NO.
02
SCALE
1:200@A3

SDA
SPACE DESIGN ARCHITECTURE

SDA
SPACE-DESIGN-ARCHITECTURE

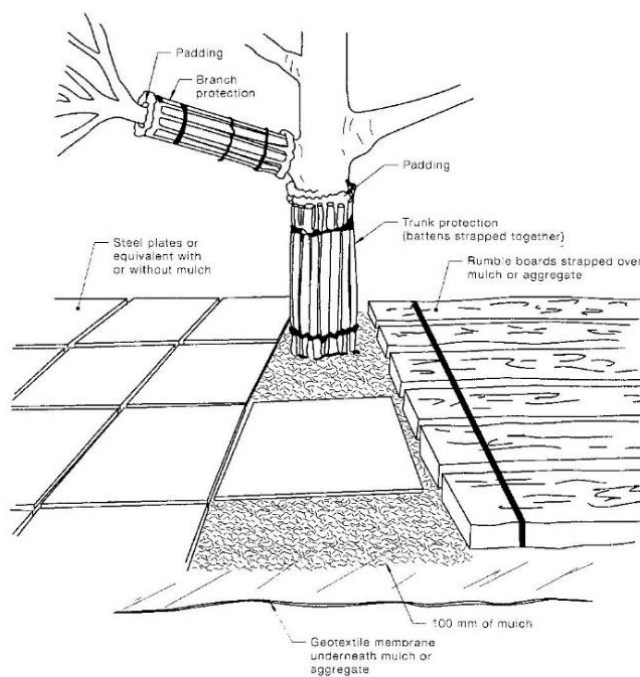
Annexure D: Tree protection details



LEGEND:

- 1 Chain wire mesh panels with shade cloth (if required) attached, held in place with concrete feet.
- 2 Alternative plywood or wooden piling fence panels. This fencing material also prevents building materials or soil entering the TPZ.
- 3 Mulch installation across surface of TPZ (at the discretion of the project arborist). No excavation, construction activity, grade changes, surface treatment or storage of materials of any kind is permitted within the TPZ.
- 4 Bracing is permissible within the TPZ. Installation of supports should avoid damaging roots.

FIGURE 3 PROTECTIVE FENCING



NOTES:

- 1 For trunk and branch protection use boards and padding that will prevent damage to bark. Boards are to be strapped to trees, not nailed or screwed.
- 2 Rumble boards should be of a suitable thickness to prevent soil compaction and root damage.

FIGURE 4 EXAMPLES OF TRUNK, BRANCH AND GROUND PROTECTION

