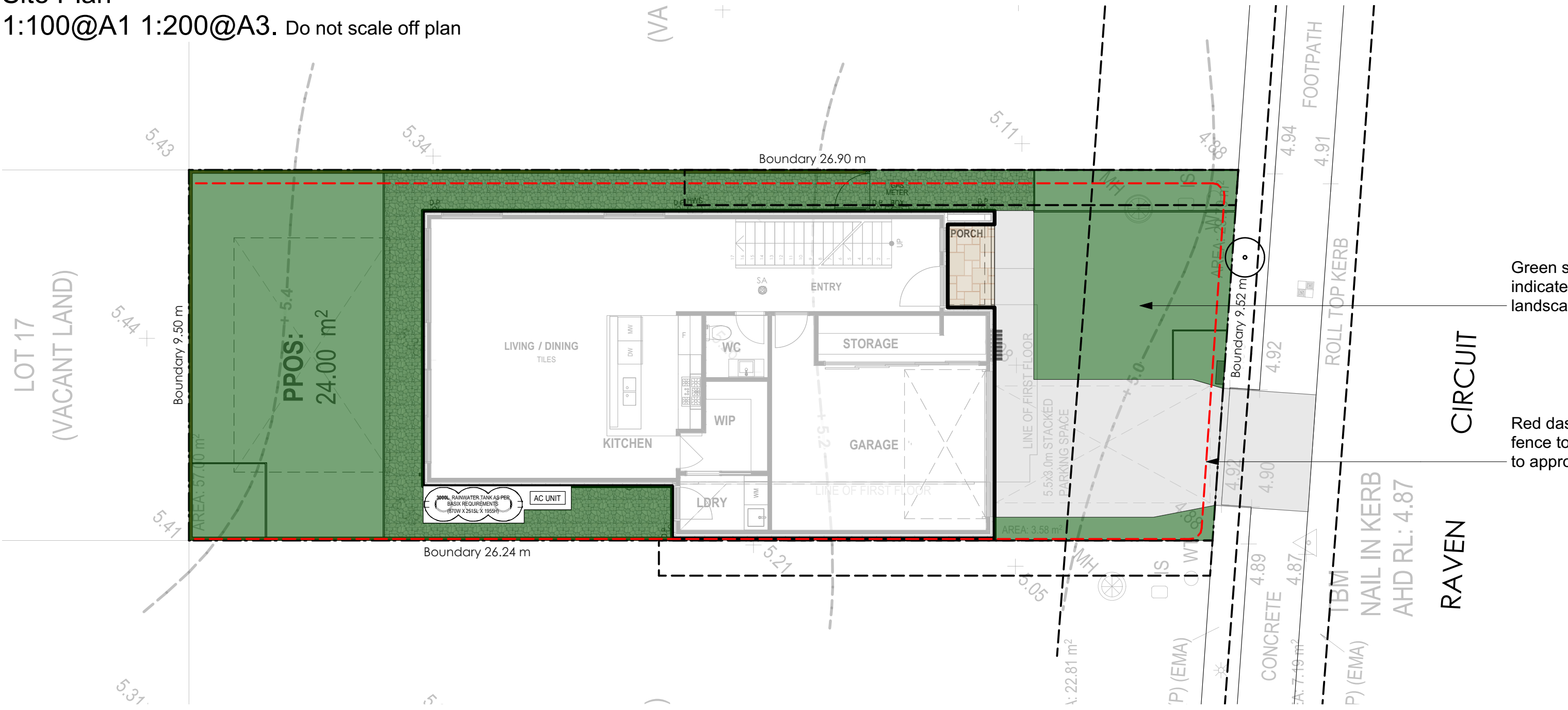
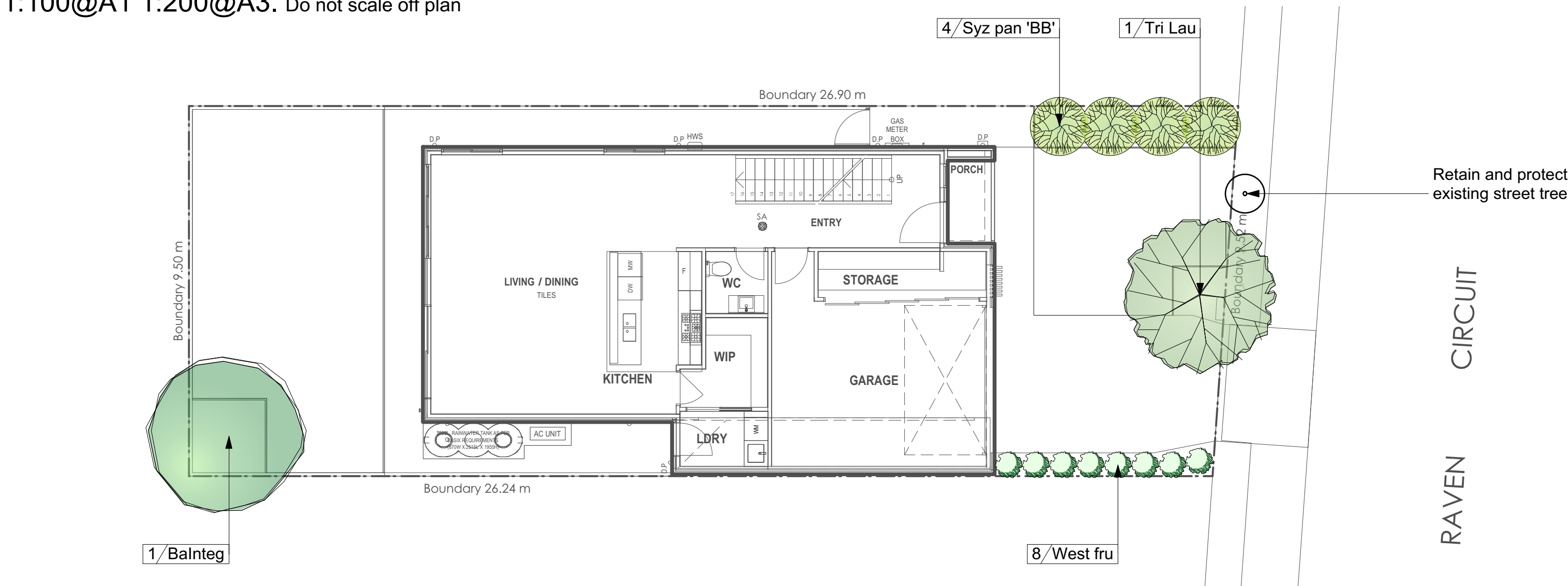


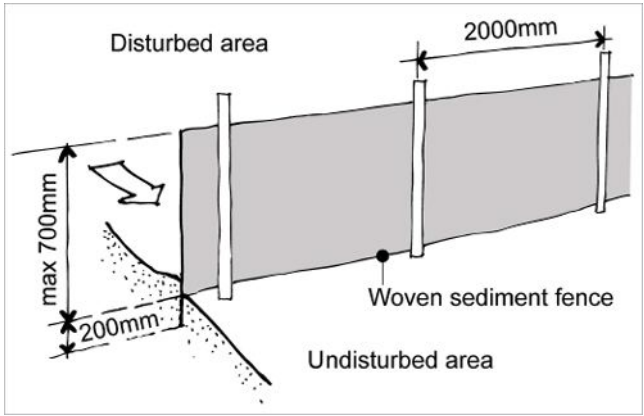
Site Plan
1:100@A1 1:200@A3. Do not scale off plan



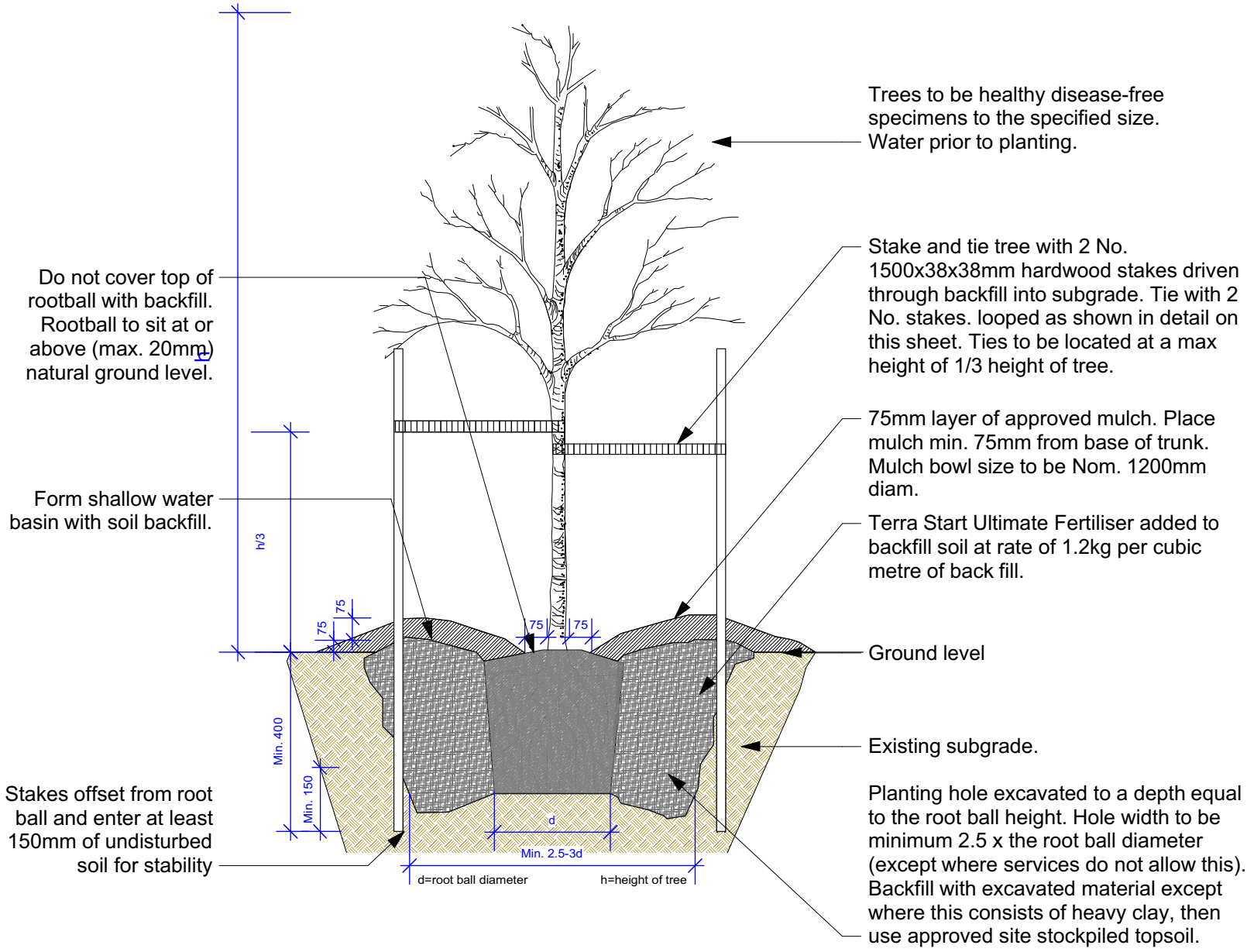
Planting Plan
1:100@A1 1:200@A3. Do not scale off plan



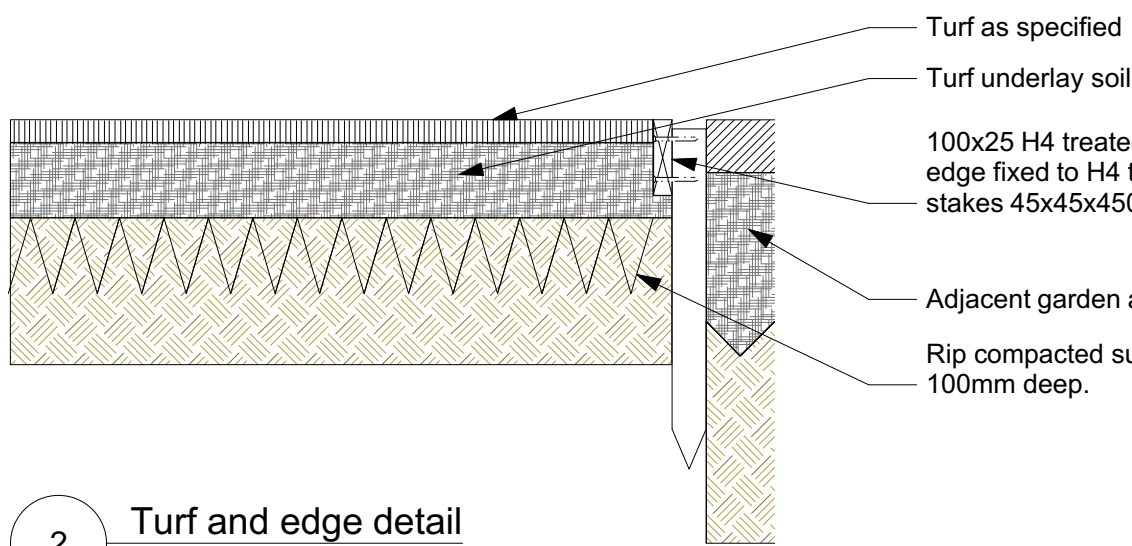
AREA CALCULATION		
	AREA (m2)	PERCENTAGE
Site	252.4	
Landscape total as per DCP	110	43.58%



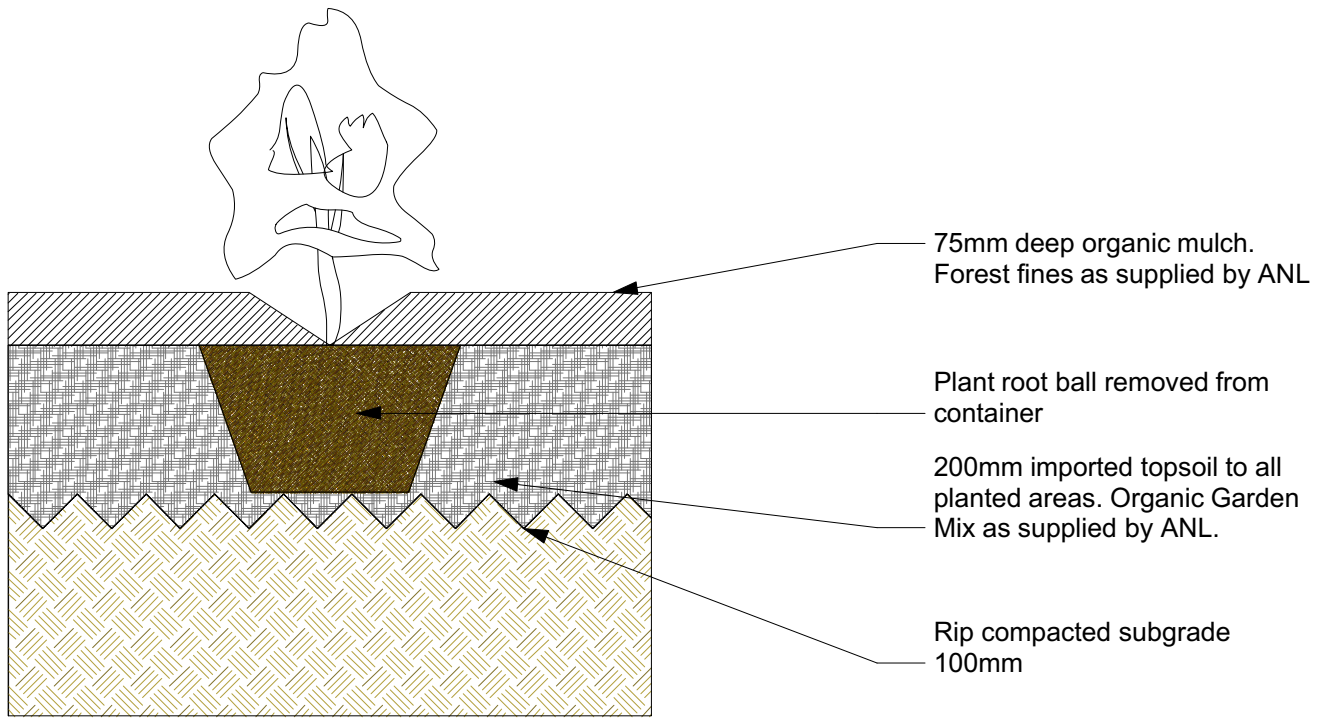
Sedimentation Control Fence
Not to scale.
Source: www.yourhome.gov.au



1 Tree planting
Scale: 1:20



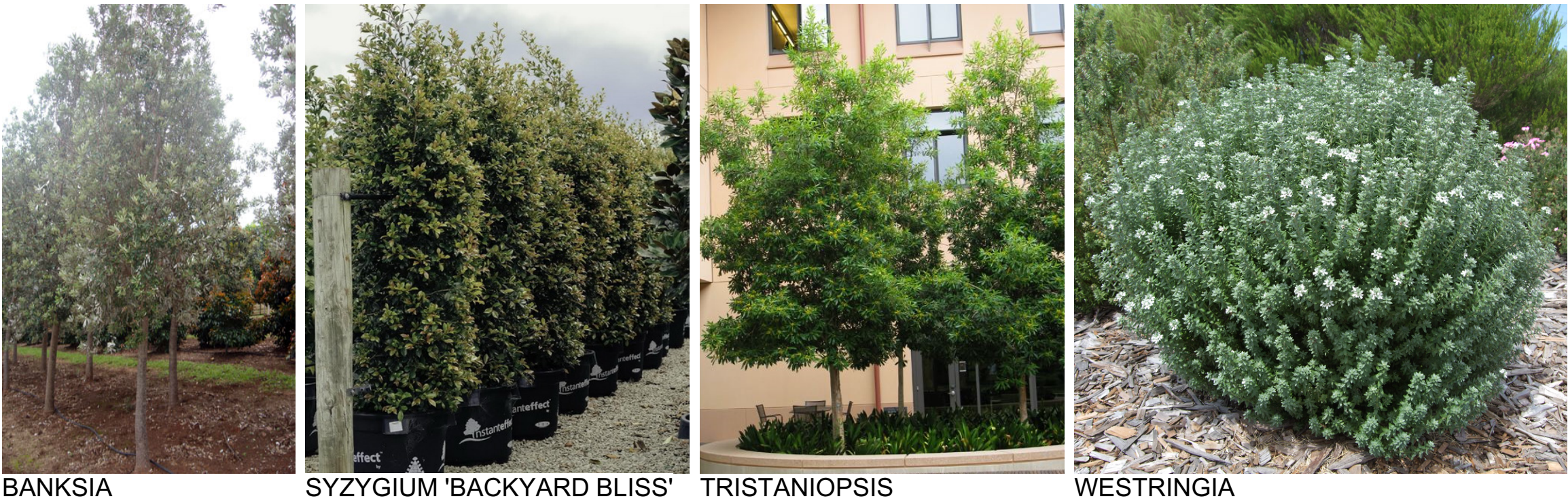
2 Turf and edge detail
Scale: 1:10



3 Shrub planting
Scale: 1:10

Legend

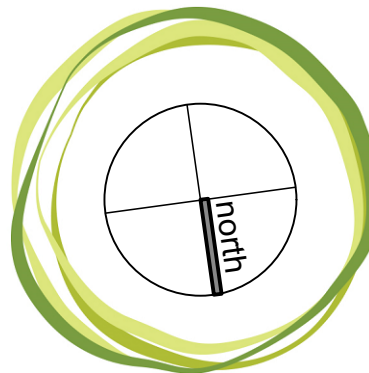
- MULCH AREA
- TURF AREA
- TIMBER DECKING
- CONCRETE PAVING
- UNIT PAVING
- STAIRS
- PEBBLE
- GRAVEL
- COBBLESTONE
- TIMBER
- WATER
- MASONRY RETAINING WALL
- STONE RETAINING WALL
- TIMBER RETAINING WALL
- BOULDER RETAINING WALL
- SITE OR WORKS BOUNDARY
- PROPOSED LEVEL
- TOP OF WALL LEVEL
- MATERIAL NAME
- SURFACE FALL DIRECTION
- SURFACE DRAINS
- SURVEY (50% GREY LINES)
- EXISTING TREE TO RETAIN
- EXISTING TREE TO REMOVE
- EXISTING ROCK OUTCROP



BANKSIA SYZYGIUM 'BACKYARD BLISS' TRISTANIOPSIS WESTRINGIA

ID	Quantity	Latin Name	Common Name	Scheduled Size	Mature Height	Mature Spread
Bainteg	1	Banksia integrifolia	Coastal Banksia	25lt	8 - 12m	3.5 - 6m
Syz pan 'BB'	4	Syzygium paniculatum 'Backyard Bliss'	Lillypilly 'Backyard Bliss'	200mm	5 - 10m	6 - 10m
Tri Lau	1	Tristaniopsis laurina 'Luscious'	Kanooka, Water Gum	45lt	12 - 15m	3.5 - 6m
West fru	8	Westringia fruticosa	Coastal Rosemary	150mm	0.9 - 1.5m	0.9 - 1.2m

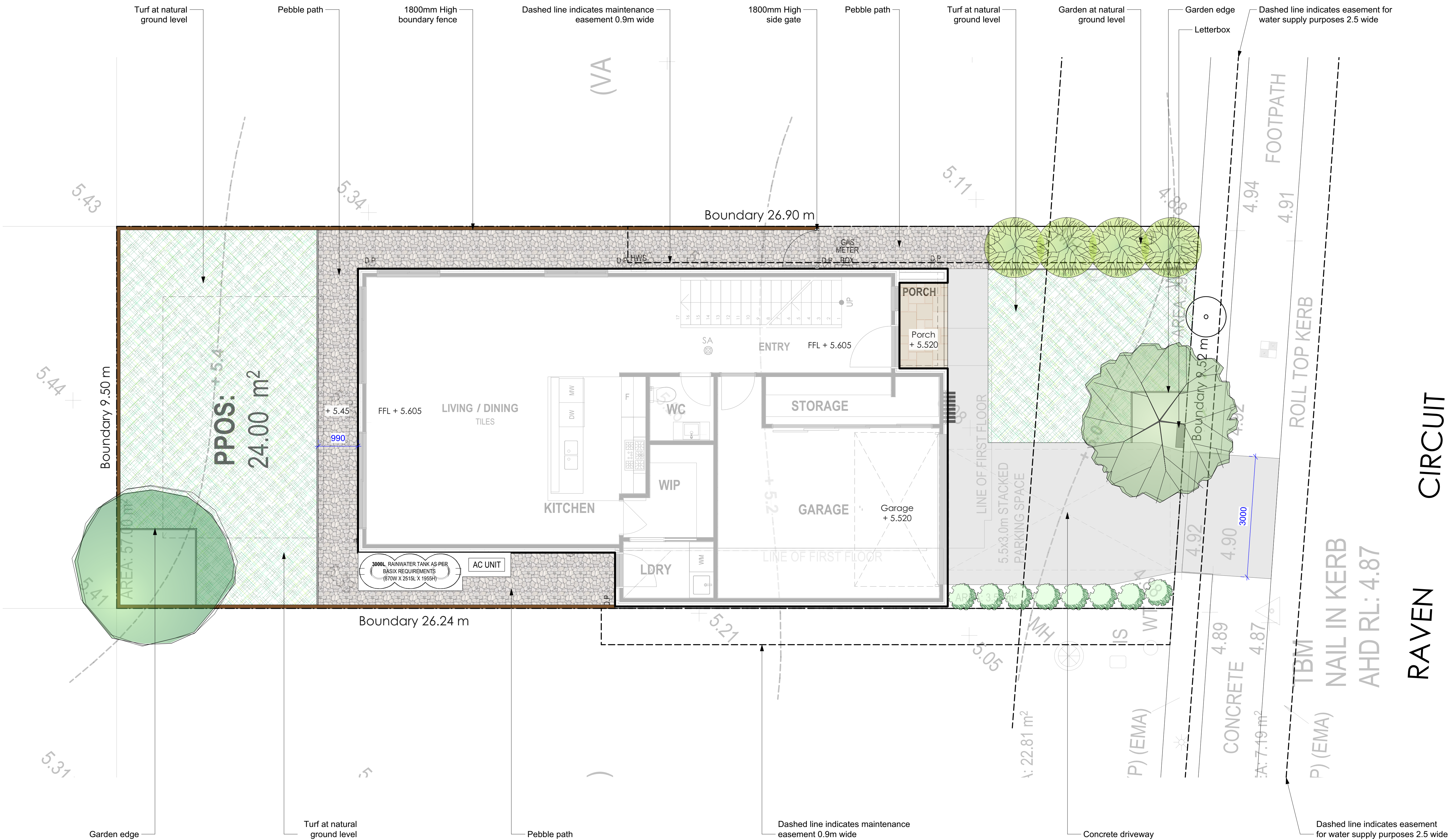
Notes:
>Do not scale off plan.
>Contractors to check all measurements onsite before quoting or commencing work.
>If abnormalities arise, contact the Landscape Architect.
>This design is copyright and is not to be reproduced in anyway without written consent of Jamie King Landscape Architect.



JAMIE KING
LANDSCAPE ARCHITECT
DESIGN • APPROVE • MANAGE

A	23/12/22	DRAFT issue for review.	PROJECT #	23054
ISSUE	DATE	REVISION	PROJECT	Lot 8 Raven Circuit Warriewood
CLIENT	Fu Shun Realty PTY LTD	DATE #	See above	DWG #
DWG	Master Landscape Plan	SCALE @ A1	See Plan	Sht-101
		DRAWN	RAR	
		CHKD	JK	REVISION

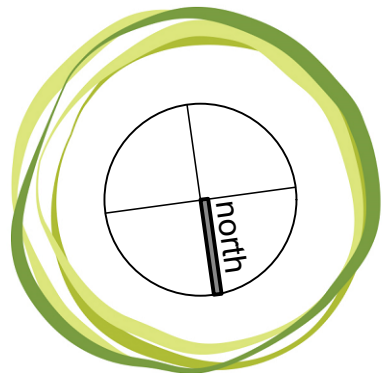
Jamie King Landscape Architect
22 Coonanga Road, Avalon, NSW, 2107
T: 0421 517 991
W: www.jamieking.com.au
E: jamie@jamieking.com.au



Legend

- MULCH AREA
- TURF AREA
- TIMBER DECKING
- CONCRETE PAVING
- UNIT PAVING
- STAIRS
- PEBBLE
- GRAVEL
- COBBLESTONE
- TIMBER
- WATER
- MASONRY RETAINING WALL
- STONE RETAINING WALL
- TIMBER RETAINING WALL
- BOULDER RETAINING WALL
- SITE OR WORKS BOUNDARY
- PROPOSED LEVEL
- TOP OF WALL LEVEL
- MATERIAL NAME
- SURFACE FALL DIRECTION
- SURFACE DRAINS
- SURVEY (50% GREY LINES)
- EXISTING TREE TO RETAIN
- EXISTING TREE TO REMOVE
- EXISTING ROCK OUTCROP

Notes:
>Do not scale off plan.
>Contractors to check all measurements onsite before quoting or commencing work.
>If abnormalities arise, contact the Landscape Architect.
>This design is copyright and is not to be reproduced in anyway without written consent of Jamie King Landscape Architect.



JAMIE KING
LANDSCAPE ARCHITECT
DESIGN ● APPROVE ● MANAGE

A	23/12/22	DRAFT issue for review.	PROJECT #	23054
ISSUE	DATE	REVISION	CLIENT	Fu Shun Realty PTY LTD
PROJECT	Lot 8 Raven Circuit Warriewood	DATE #	See above	DWG #
CLIENT	Fu Shun Realty PTY LTD	SCALE @ A1	See Plan	Sht-102
DWG	Landscape Detail Plan	DRAWN	RAR	CHKD
CHKD	JK	REVISION		

Jamie King Landscape Architect
22 Coonanga Road, Avalon, NSW, 2107
T: 0421 517 991
W: www.jamieking.com.au
E: jamie@jamieking.com.au