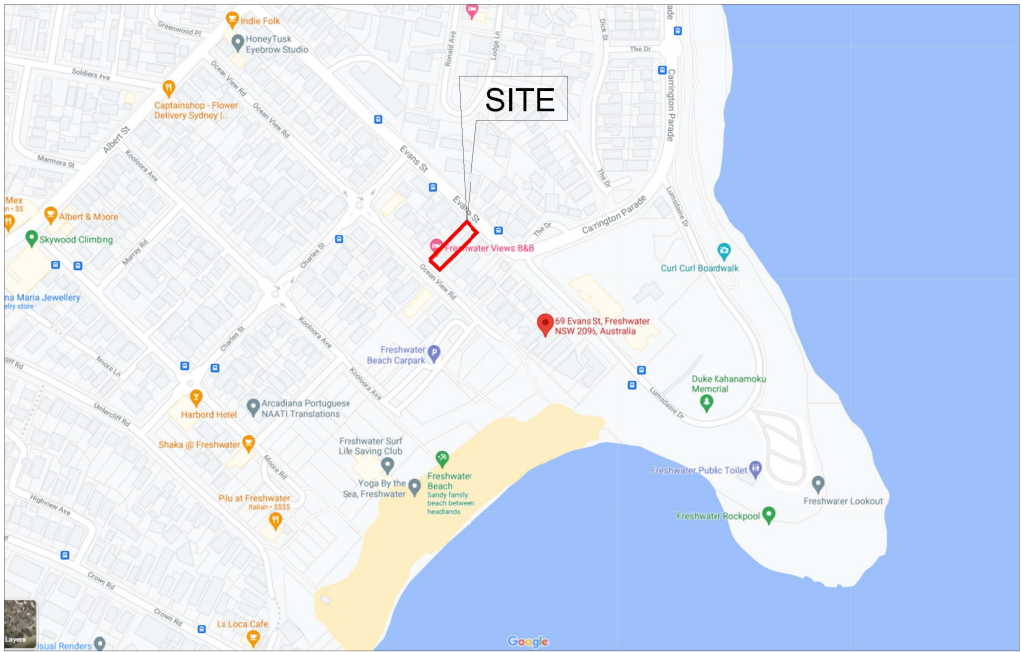




01

Perspective
Not to Scale



02

Vicinity Map
Not to Scale



03

Vicinity Map
Not to Scale



GENERAL NOTES
1. CONTRACTORS MUST VERIFY ALL DIMENSIONS ON SITE PRIOR TO THE COMMENCEMENT OF ANY WORK OR THE PREPARATION OF SHOP DRAWINGS.
2. FIGURED DIMENSIONS TO BE USED IN PREFERENCE TO SCALED DIMENSIONS.
USE OF THESE DRAWINGS
The design and details shown on these drawings are applicable to this project only and may not be reproduced in whole or in part or be used for any other project or purpose without the written permission of Woodhouse & Danks Pty. Ltd. with whom copyright resides.

No.	DATE	REVISION OR ISSUE	DWN.	CHK.	No.	DATE	REVISION OR ISSUE
-----	------	-------------------	------	------	-----	------	-------------------

"a"	14.12.21	"a" Vertical privacy screen over foyer	DWN.	CHK.	No.	DATE	REVISION OR ISSUE
	06.09.21	ISSUE					

Proposed Alteration
69 Evans Street , Freshwater
NSW

PERSPECTIVE, VICINITY & LOCATION MAP

'Nominated Architect Stephen Fayle'



WOODHOUSE & DANKS PTY LTD
ARCHITECTS
Stephen R Fayle
Suite 207 Level 2, 20 Dale Street, Brookvale NSW 2100
E: admin@woodhousedanks.com.au
T: (02) 9939 8810
C:\69 Evans Street, Freshwater\Drawings\2021.08.09

JOB No.
20005

DWG. No.

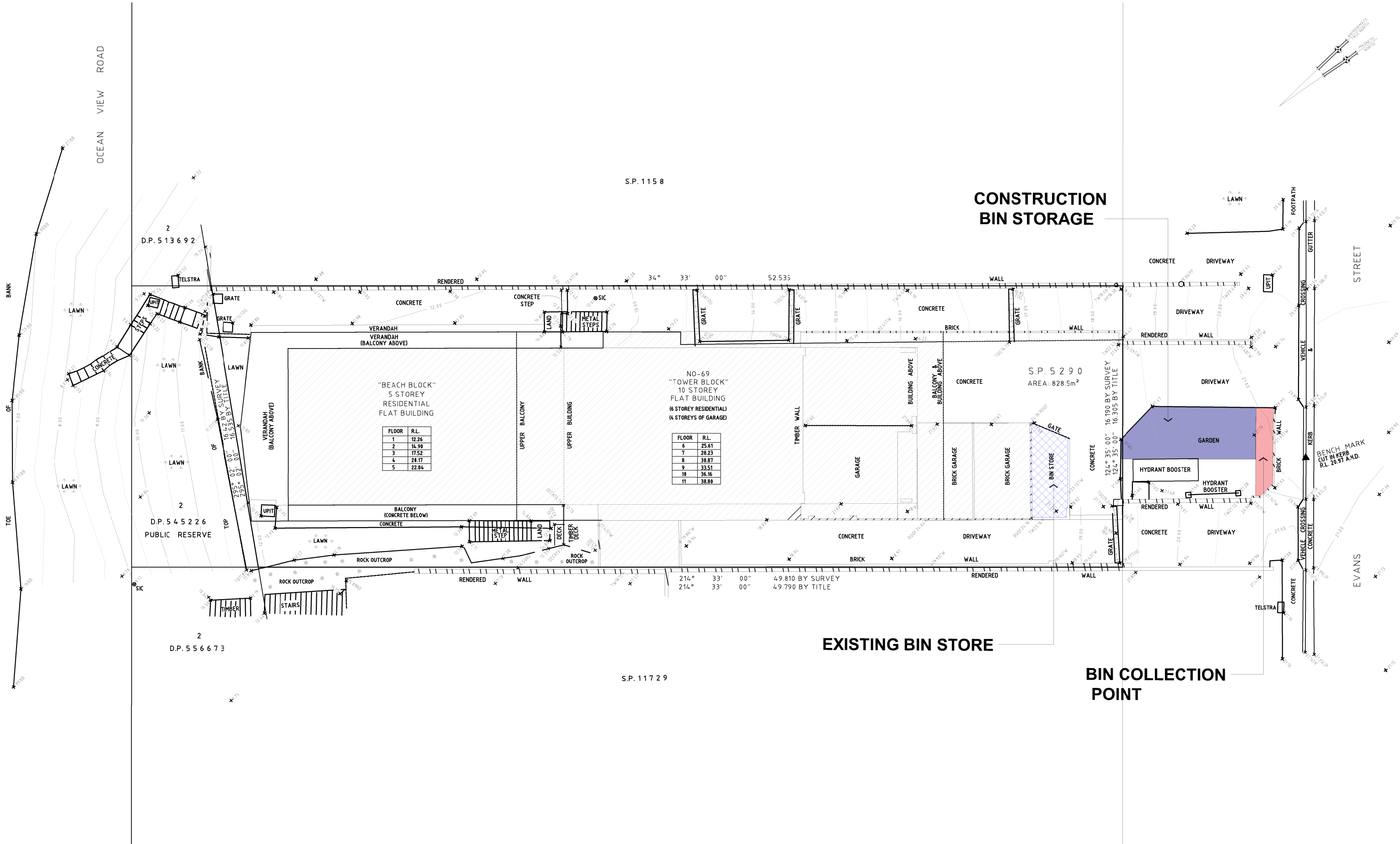
REV

CD 01 a

SCALE
AS SHOWN

DATE
DEC 2021

DRAWN
rjo



GENERAL NOTES
1. CONTRACTORS MUST VERIFY ALL DIMENSIONS ON SITE PRIOR TO THE COMMENCEMENT OF ANY WORK OR THE PREPARATION OF SHOP DRAWINGS.
2. FIGURED DIMENSIONS TO BE USED IN PREFERENCE TO SCALED DIMENSIONS.
USE OF THESE DRAWINGS
The design and details shown on these drawings are applicable to this project only and may not be reproduced in whole or in part or be used for any other project or purpose without the written permission of Woodhouse & Danks Pty. Ltd. with whom copyright resides.

No. DATE REVISION OR ISSUE

DWN. CHK. No. DATE REVISION OR ISSUE

DWN. CHK. No. DATE REVISION OR ISSUE

DWN. CHK.

06.09.21 ISSUE

Proposed Alteration
69 Evans Street, Freshwater
NSW

SITE DEVELOPMENT PLAN

'Nominated Architect Stephen Fayle'



WOODHOUSE & DANKS
ARCHITECTS

Suite 207 Level 2, 20 Dale Street, Brookvale NSW 2100
T: (02) 9939 8810
E: admin@woodhousedanks.com.au

SCALE
1:200 M
DATE
SEPT 2021
CAD FILE
E:\69 Evans Street, Freshwater\Drawings\2021.08\09

JOB No.

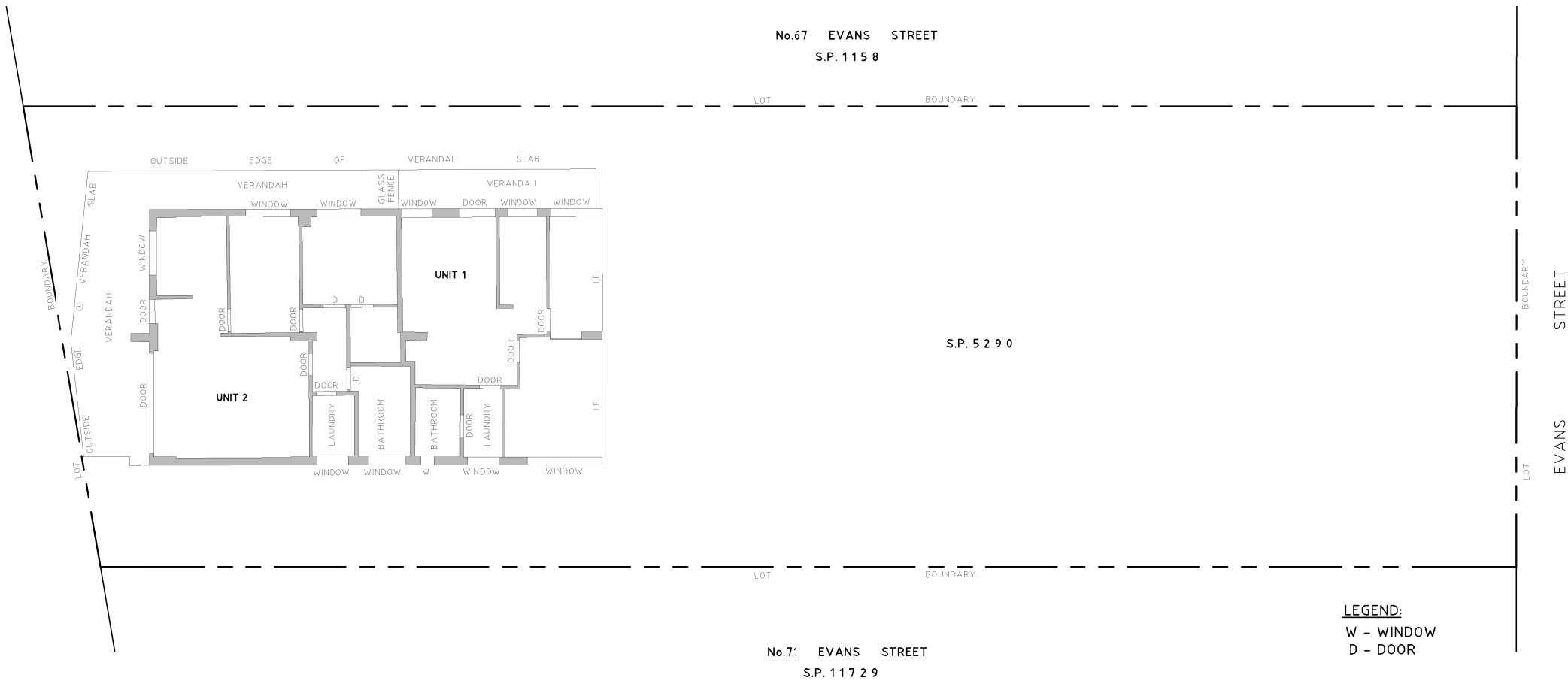
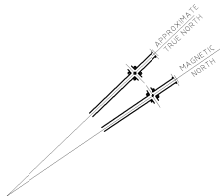
20005

DWG. No.

REV

CD 02 -

DRAWN
rjo



GENERAL NOTES
1. CONTRACTORS MUST VERIFY ALL DIMENSIONS ON SITE PRIOR TO THE COMMENCEMENT OF ANY WORK OR THE PREPARATION OF SHOP DRAWINGS.
2. FIGURED DIMENSIONS TO BE USED IN PREFERENCE TO SCALED DIMENSIONS.
USE OF THESE DRAWINGS
The design and details shown on these drawings are applicable to this project only and may not be reproduced in whole or in part or be used for any other project or purpose without the written permission of Woodhouse & Danks Pty. Ltd. with whom copyright resides.

No. DATE REVISION OR ISSUE

DWN. CHK. No. DATE REVISION OR ISSUE

DWN. CHK. No. DATE REVISION OR ISSUE

DWN. CHK.

06.09.21 ISSUE

Proposed Alteration
69 Evans Street , Freshwater
NSW

LEVEL 1

‘Nominated Architect Stephen Fayle’



WOODHOUSE & DANKS PTY LTD
ARCHITECTS

ABN: 26 064 690 106
ARN: 3274

Suite 207 Level 2, 20 Dale Street, Brookvale NSW 2100

T: (02) 9939 8810
E: admin@woodhousedanks.com.au

SCALE
1:200 M

DATE
SEPT 2021

E: 69 Evans Street, Freshwater Drawings 2021.08.09

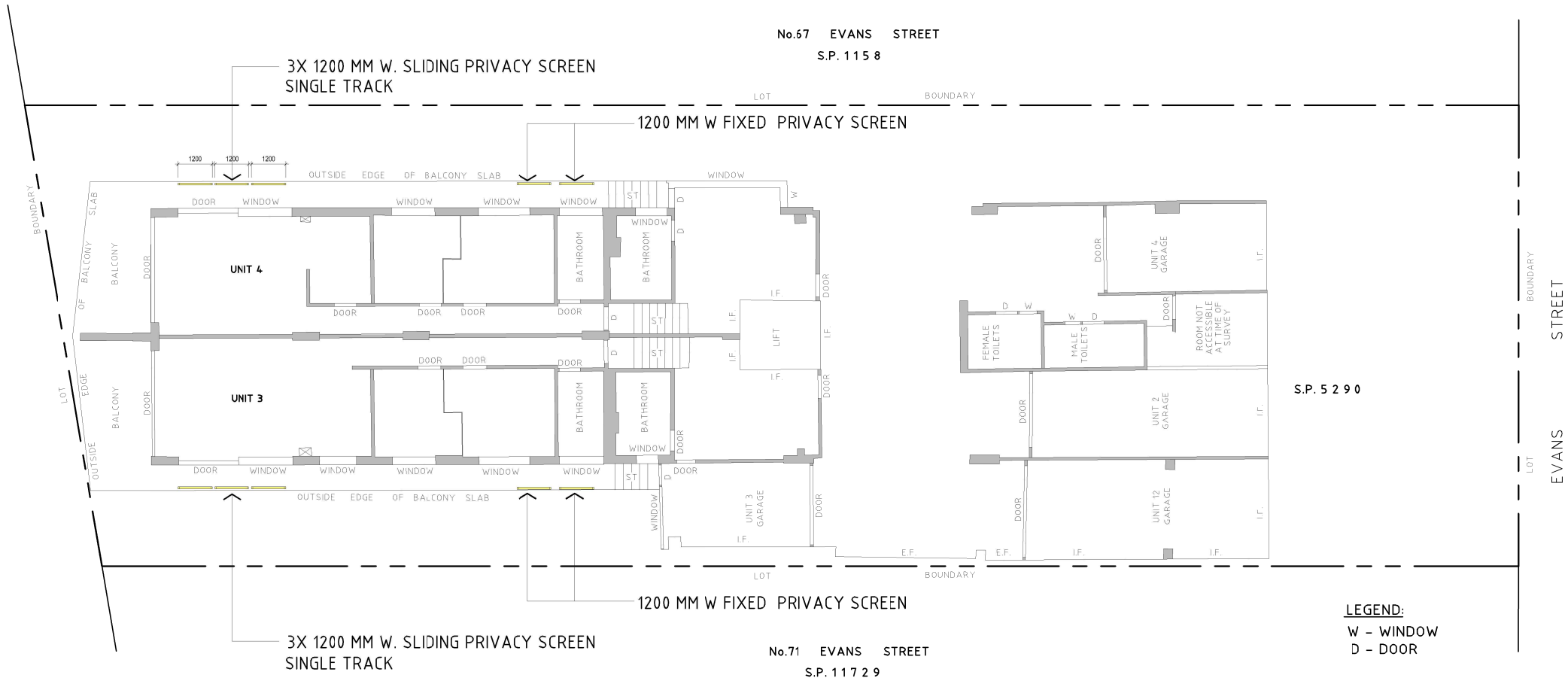
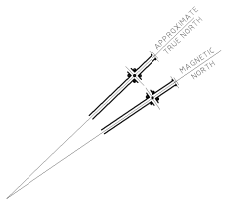
JOB No.

20005

DWG. No. REV

CD 03 -

DRAWN
rjo



LEGEND:
W - WINDOW
D - DOOR



GENERAL NOTES
1. CONTRACTORS MUST VERIFY ALL DIMENSIONS ON SITE PRIOR TO THE COMMENCEMENT OF ANY WORK OR THE PREPARATION OF SHOP DRAWINGS.
2. FIGURED DIMENSIONS TO BE USED IN PREFERENCE TO SCALED DIMENSIONS.
USE OF THESE DRAWINGS
The design and details shown on these drawings are applicable to this project only and may not be reproduced in whole or in part or be used for any other project or purpose without the written permission of Woodhouse & Danks Pty. Ltd. with whom copyright resides.

No. DATE REVISION OR ISSUE

DWN. CHK. No. DATE REVISION OR ISSUE

DWN. CHK. No. DATE REVISION OR ISSUE

DWN. CHK.

06.09.21 ISSUE

Proposed Alteration
69 Evans Street , Freshwater
NSW

LEVEL 2

‘Nominated Architect Stephen Fayle’



WOODHOUSE & DANKS PTY LTD
ARCHITECTS
Stephen R Fayle
ABN 26 064 690 106
ARN 3274

Suite 207 Level 2, 20 Dale Street, Brookvale NSW 2100

T: (02) 9939 8810
E: admin@woodhousedanks.com.au

SCALE
1:200 M

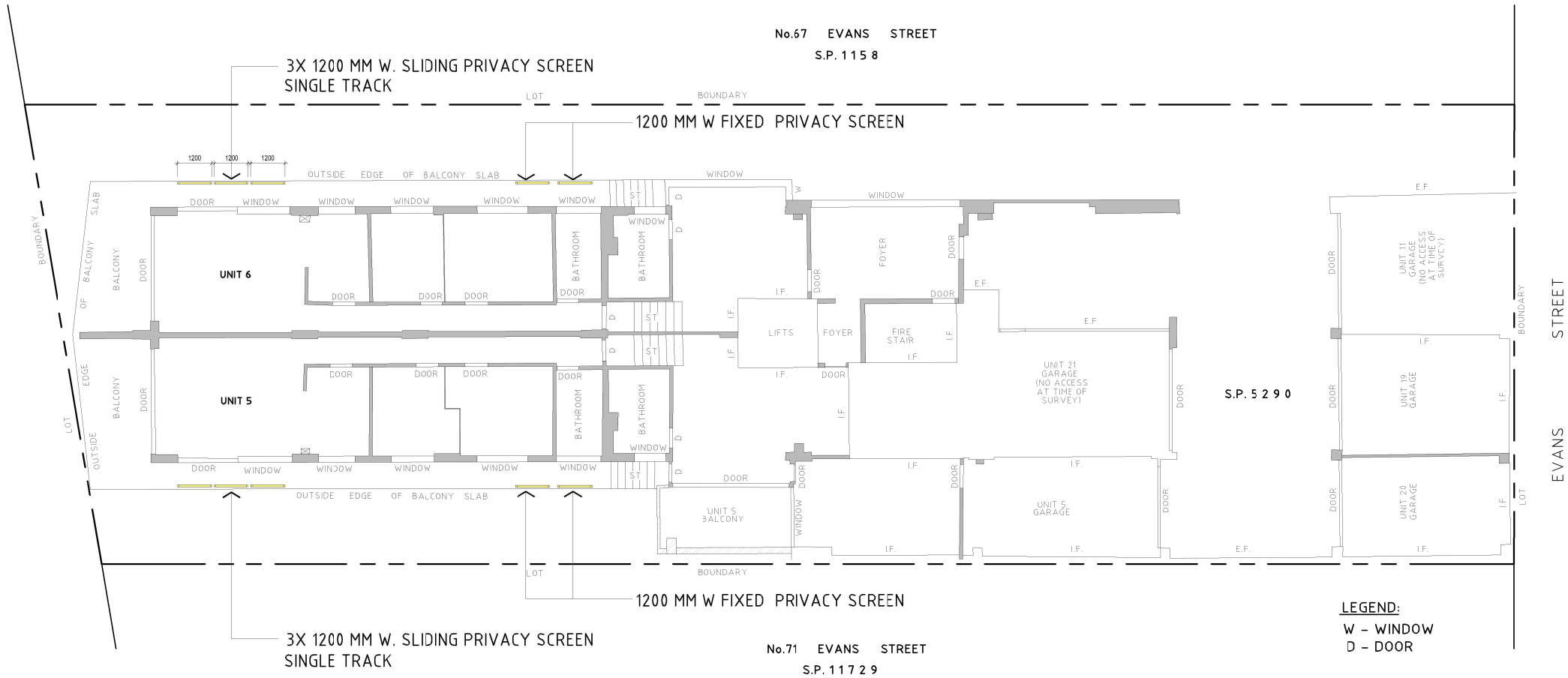
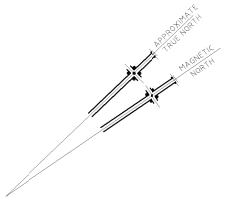
DATE
SEPT 2021
E: 69 Evans Street, Freshwater Drawings 2021.08.09

JOB No.
20005

DWG. No. REV

CD 04 -

DRAWN
rjo



GENERAL NOTES
1. CONTRACTORS MUST VERIFY ALL DIMENSIONS ON SITE PRIOR TO THE COMMENCEMENT OF ANY WORK OR THE PREPARATION OF SHOP DRAWINGS.
2. FIGURED DIMENSIONS TO BE USED IN PREFERENCE TO SCALED DIMENSIONS.
USE OF THESE DRAWINGS
The design and details shown on these drawings are applicable to this project only and may not be reproduced in whole or in part or be used for any other project or purpose without the written permission of Woodhouse & Danks Pty. Ltd. with whom copyright resides.

No. DATE REVISION OR ISSUE

DWN. CHK. No. DATE REVISION OR ISSUE

DWN. CHK. No. DATE REVISION OR ISSUE

DWN. CHK.

06.09.21 ISSUE

Proposed Alteration
69 Evans Street, Freshwater
NSW

LEVEL 3

'Nominated Architect Stephen Fayle'



WOODHOUSE & DANKS PTY LTD
ARCHITECTS
Stephen R Fayle
ABN 26 064 690 106
ARN 3274

Suite 207 Level 2, 20 Dale Street, Brookvale NSW 2100

T: (02) 9939 8810
E: admin@woodhousedanks.com.au

SCALE
1:200 M

DATE
SEPT 2021

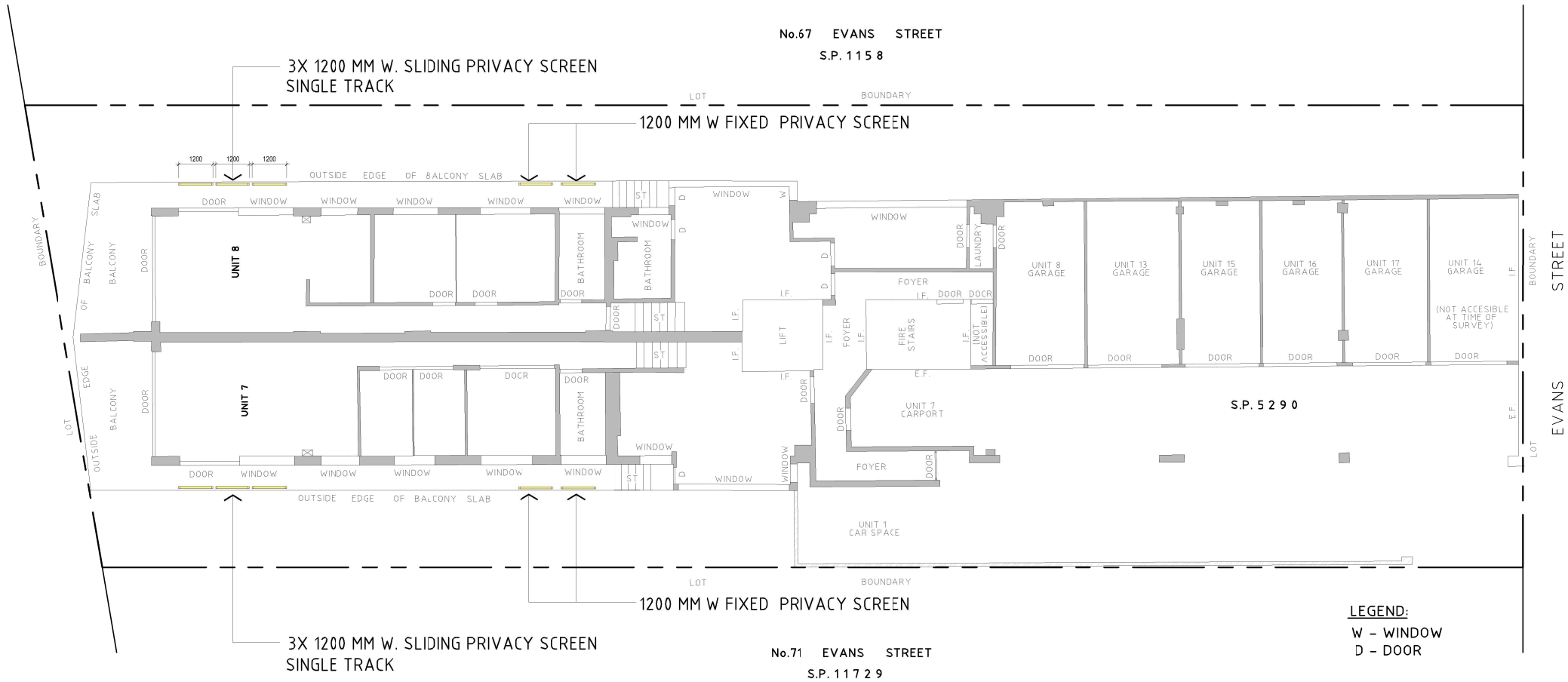
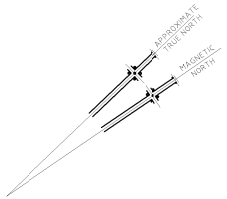
E: 69 Evans Street, Freshwater Drawings 2021.08.09

JOB No.
20005

DWG. No. REV

CD 05 -

DRAWN
rjo



GENERAL NOTES
1. CONTRACTORS MUST VERIFY ALL DIMENSIONS ON SITE PRIOR TO THE COMMENCEMENT OF ANY WORK OR THE PREPARATION OF SHOP DRAWINGS.
2. FIGURED DIMENSIONS TO BE USED IN PREFERENCE TO SCALED DIMENSIONS.
USE OF THESE DRAWINGS
The design and details shown on these drawings are applicable to this project only and may not be reproduced in whole or in part or be used for any other project or purpose without the written permission of Woodhouse & Danks Pty. Ltd. with whom copyright resides.

No. DATE REVISION OR ISSUE

DWN. CHK. No. DATE REVISION OR ISSUE

DWN. CHK. No. DATE REVISION OR ISSUE

DWN. CHK.

06.09.21 ISSUE

Proposed Alteration
69 Evans Street, Freshwater
NSW

LEVEL 4

'Nominated Architect Stephen Fayle'



WOODHOUSE & DANKS PTY LTD
ARCHITECTS

ABN: 26 064 690 106
ARN: 3274

Suite 207 Level 2, 20 Dale Street, Brookvale NSW 2100

T: (02) 9939 8810
E: admin@woodhousedanks.com.au

SCALE
1:200 M

DATE
SEPT 2021

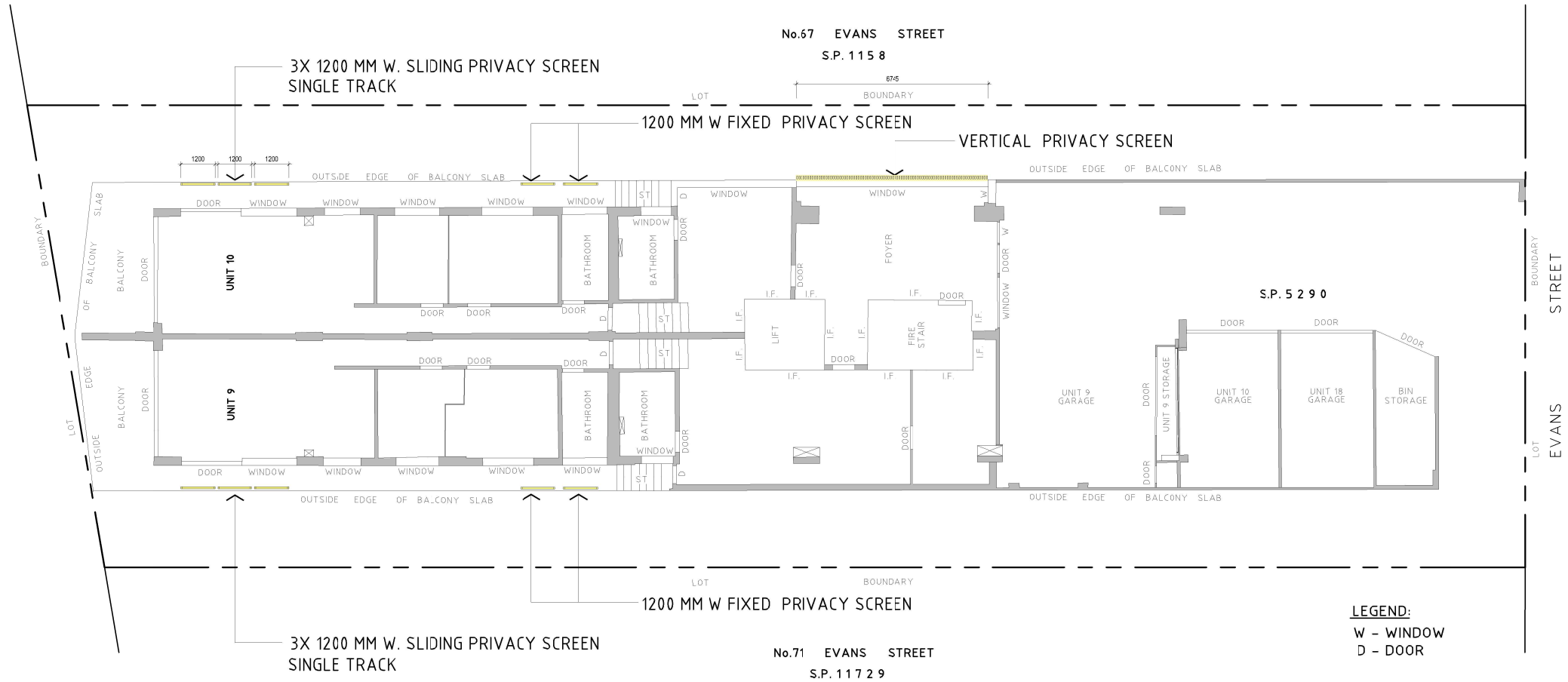
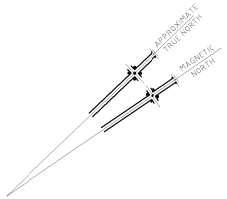
E: 69 Evans Street, Freshwater Drawings/2021.08.09

JOB No.
20005

DWG. No. REV

CD 06 -

DRAWN
rjo



GENERAL NOTES
1. CONTRACTORS MUST VERIFY ALL DIMENSIONS ON SITE PRIOR TO THE COMMENCEMENT OF ANY WORK OR THE PREPARATION OF SHOP DRAWINGS.
2. FIGURED DIMENSIONS TO BE USED IN PREFERENCE TO SCALED DIMENSIONS.
USE OF THESE DRAWINGS
The design and details shown on these drawings are applicable to this project only and may not be reproduced in whole or in part or be used for any other project or purpose without the written permission of Woodhouse & Danks Pty. Ltd. with whom copyright resides.

No. DATE REVISION OR ISSUE

DWN. CHK. No. DATE REVISION OR ISSUE

"a" 14.12.21 "a" Vertical privacy screen over foyer
06.09.21 ISSUE

DWN. CHK. No. DATE REVISION OR ISSUE

DWN. CHK.

Proposed Alteration
69 Evans Street, Freshwater
NSW

LEVEL 5

'Nominated Architect Stephen Fayle'



WOODHOUSE & DANKS PTY LTD
ARCHITECTS

ABN 26 064 690 106
ARN 3274

Suite 207 Level 2, 20 Dale Street, Brookvale NSW 2100

T: (02) 9939 8810
E: admin@woodhousedanks.com.au

SCALE
1:200 M

DATE
DEC 2021

E: 69 Evans Street, Freshwater Drawings 2021.08.09

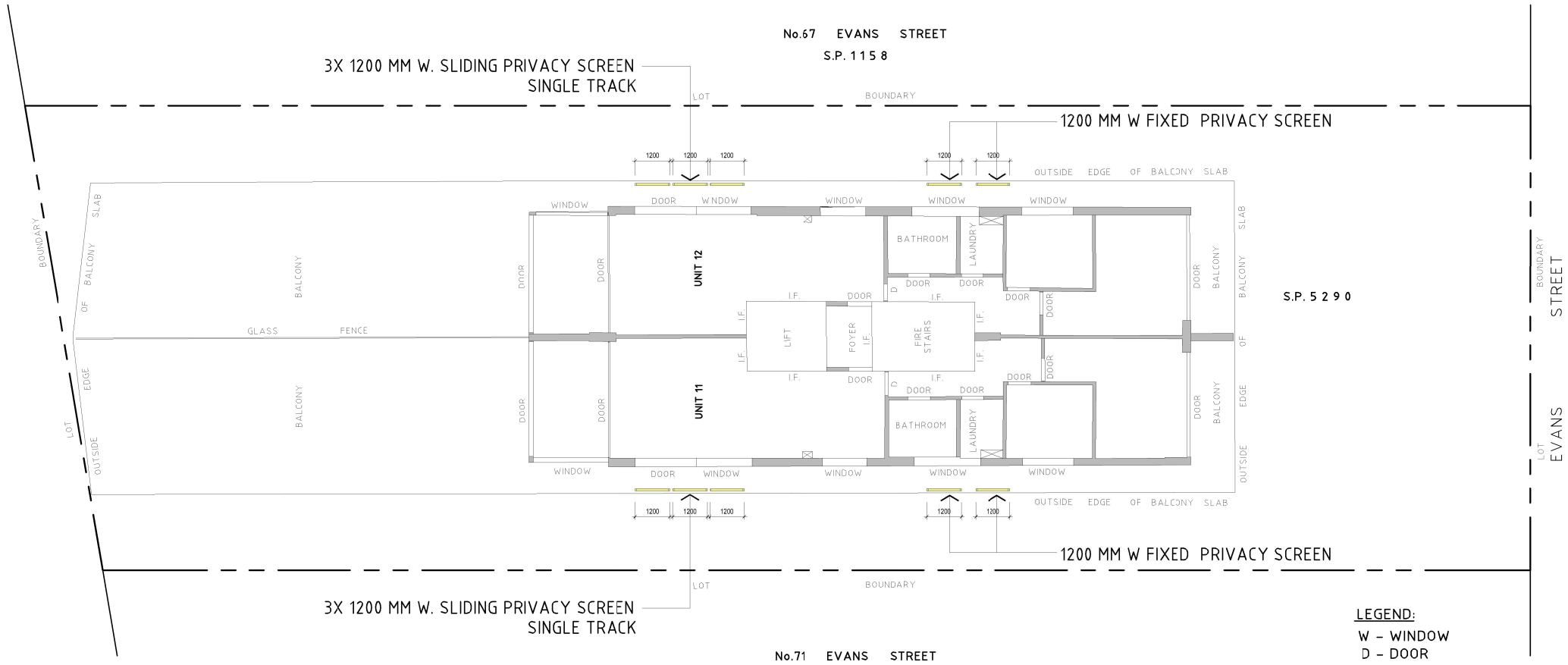
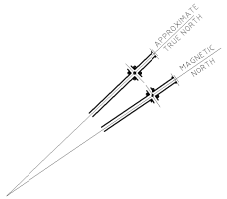
JOB No.

20005

DWG. No. REV

CD 07 a

DRAWN
rjo



GENERAL NOTES
1. CONTRACTORS MUST VERIFY ALL DIMENSIONS ON SITE PRIOR TO THE COMMENCEMENT OF ANY WORK OR THE PREPARATION OF SHOP DRAWINGS.
2. FIGURED DIMENSIONS TO BE USED IN PREFERENCE TO SCALED DIMENSIONS.
USE OF THESE DRAWINGS
The design and details shown on these drawings are applicable to this project only and may not be reproduced in whole or in part or be used for any other project or purpose without the written permission of Woodhouse & Danks Pty. Ltd. with whom copyright resides.

No. DATE REVISION OR ISSUE

DWN. CHK. No. DATE REVISION OR ISSUE

DWN. CHK. No. DATE REVISION OR ISSUE

DWN. CHK.

06.09.21 ISSUE

Proposed Alteration
69 Evans Street , Freshwater
NSW

LEVEL 6

'Nominated Architect Stephen Fayle'



WOODHOUSE & DANKS PTY LTD
ARCHITECTS
Stephen R Fayle
ABN: 26 064 690 106
ARN: 3274

Suite 207 Level 2, 20 Dale Street, Brookvale NSW 2100
T: (02) 9939 8810
E: admin@woodhousedanks.com.au

SCALE
1:200 M

DATE
SEPT 2021

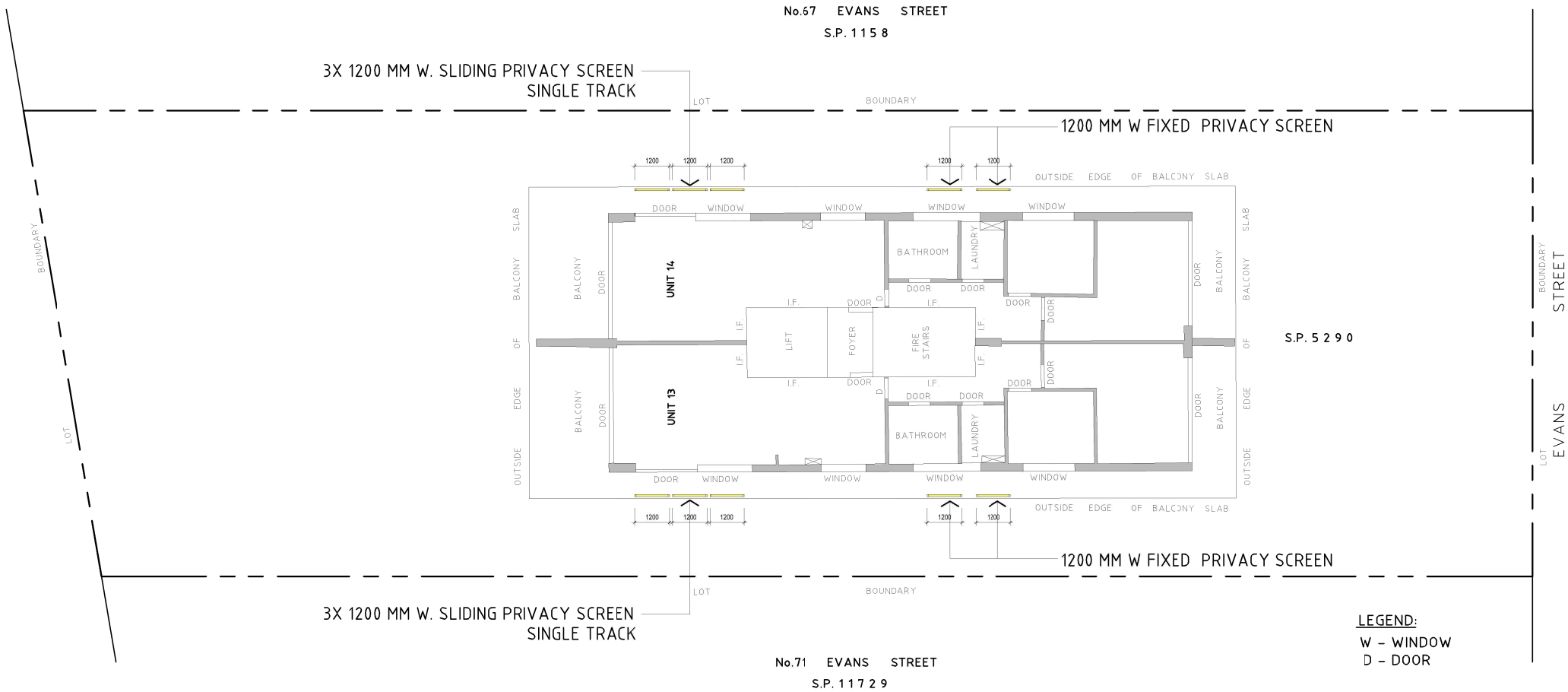
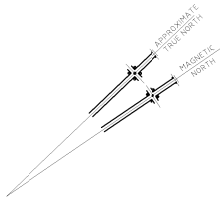
CAD FILE
E:\69 Evans Street, Freshwater\Drawings\2021.08.09

JOB No.
20005

DWG. No. REV

CD 08 -

DRAWN
rjo



GENERAL NOTES
1. CONTRACTORS MUST VERIFY ALL DIMENSIONS ON SITE PRIOR TO THE COMMENCEMENT OF ANY WORK OR THE PREPARATION OF SHOP DRAWINGS.
2. FIGURED DIMENSIONS TO BE USED IN PREFERENCE TO SCALED DIMENSIONS.
USE OF THESE DRAWINGS
The design and details shown on these drawings are applicable to this project only and may not be reproduced in whole or in part or be used for any other project or purpose without the written permission of Woodhouse & Danks Pty. Ltd. with whom copyright resides.

No. DATE REVISION OR ISSUE

DWN. CHK. No. DATE REVISION OR ISSUE

DWN. CHK. No. DATE REVISION OR ISSUE

DWN. CHK.

06.09.21 ISSUE

Proposed Alteration
69 Evans Street , Freshwater
NSW

LEVEL 7

‘Nominated Architect Stephen Fayle’



WOODHOUSE & DANKS PTY LTD
ARCHITECTS

ABN: 26 064 690 106
ARN: 3274

Suite 207 Level 2, 20 Dale Street, Brookvale NSW 2100

T: (02) 9939 8810
E: admin@woodhousedanks.com.au

SCALE
1:200 M

DATE
SEPT 2021

E: 69 Evans Street, Freshwater Drawings 2021.08.09

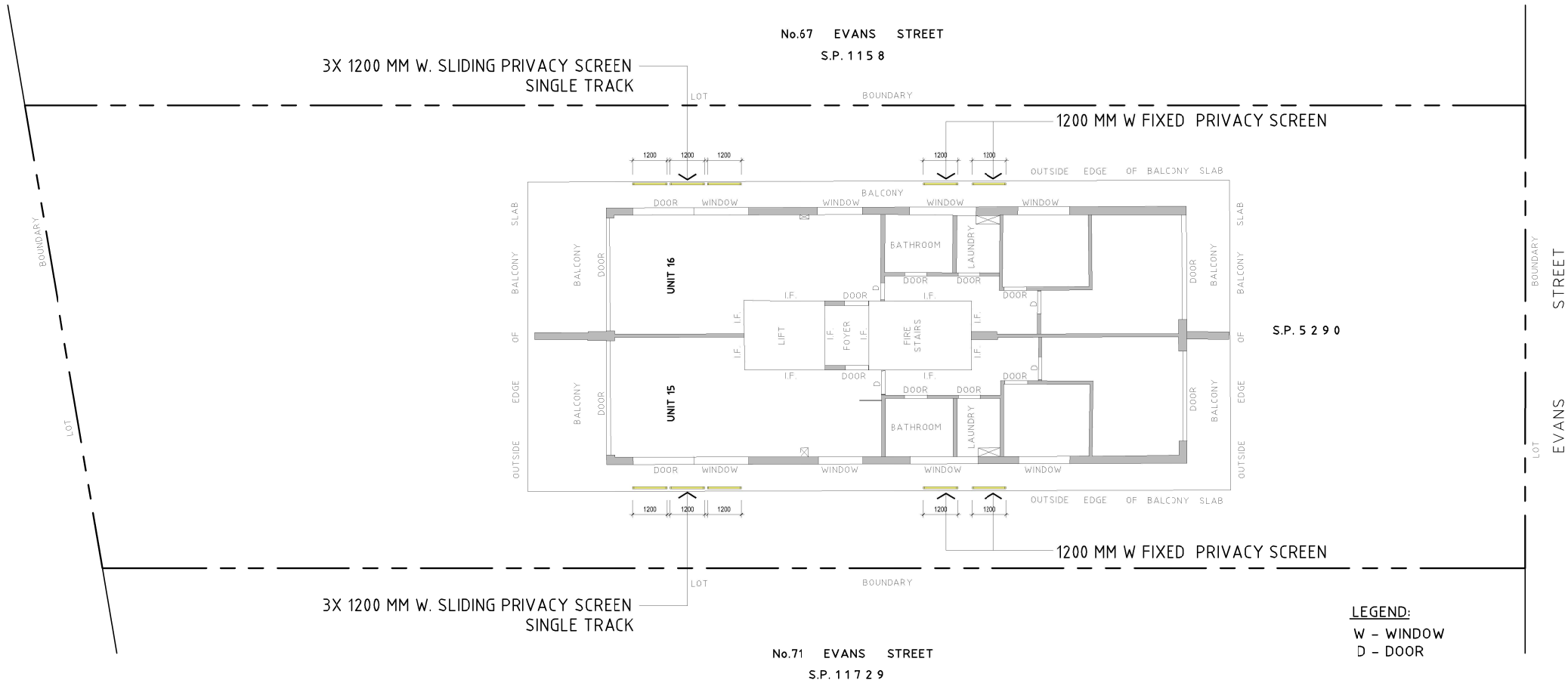
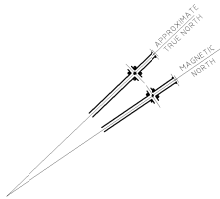
JOB No.

20005

DWG. No. REV

CD 09 -

DRAWN
rjo



GENERAL NOTES
1. CONTRACTORS MUST VERIFY ALL DIMENSIONS ON SITE PRIOR TO THE COMMENCEMENT OF ANY WORK OR THE PREPARATION OF SHOP DRAWINGS.
2. FIGURED DIMENSIONS TO BE USED IN PREFERENCE TO SCALED DIMENSIONS.
USE OF THESE DRAWINGS
The design and details shown on these drawings are applicable to this project only and may not be reproduced in whole or in part or be used for any other project or purpose without the written permission of Woodhouse & Danks Pty. Ltd. with whom copyright resides.

No. DATE REVISION OR ISSUE

DWN. CHK. No. DATE REVISION OR ISSUE

DWN. CHK. No. DATE REVISION OR ISSUE

DWN. CHK.

06.09.21 ISSUE

Proposed Alteration
69 Evans Street, Freshwater
NSW

LEVEL 8

‘Nominated Architect Stephen Fayle’



WOODHOUSE & DANKS PTY LTD
ARCHITECTS
Stephen R Fayle
ABN 26 064 690 106
ARN 3274

Suite 207 Level 2, 20 Dale Street, Brookvale NSW 2100
T: (02) 9939 8810
E: admin@woodhousedanks.com.au

SCALE
1:200 M

DATE
SEPT 2021

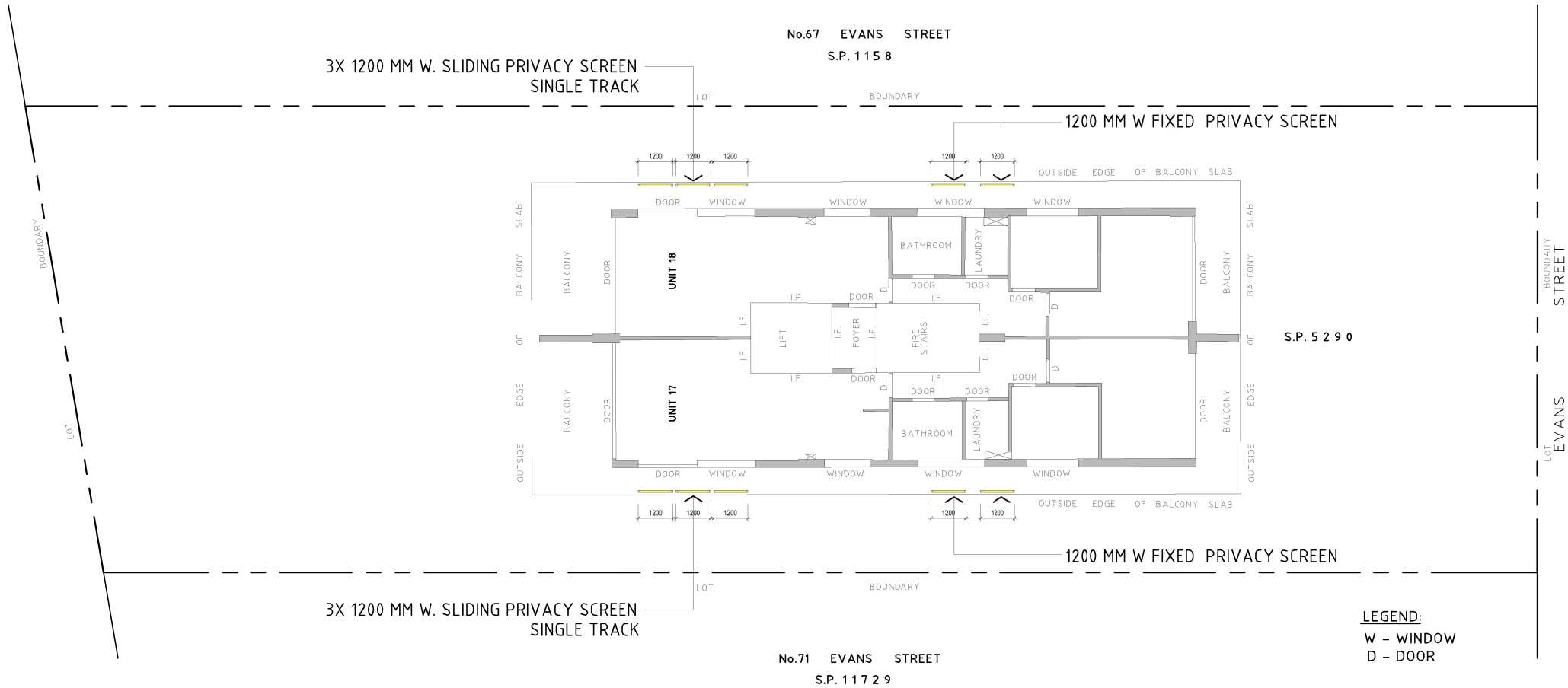
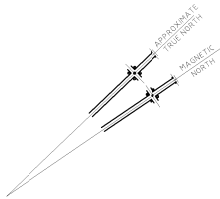
CAD FILE
E:\69 Evans Street, Freshwater\Drawings\2021.08.09

JOB No.
20005

DWG. No. REV

CD 10 -

DRAWN
rjo



GENERAL NOTES
1. CONTRACTORS MUST VERIFY ALL DIMENSIONS ON SITE PRIOR TO THE COMMENCEMENT OF ANY WORK OR THE PREPARATION OF SHOP DRAWINGS.
2. FIGURED DIMENSIONS TO BE USED IN PREFERENCE TO SCALED DIMENSIONS.
USE OF THESE DRAWINGS
The design and details shown on these drawings are applicable to this project only and may not be reproduced in whole or in part or be used for any other project or purpose without the written permission of Woodhouse & Danks Pty. Ltd. with whom copyright resides.

No. DATE REVISION OR ISSUE

DWN. CHK. No. DATE REVISION OR ISSUE

DWN. CHK. No. DATE REVISION OR ISSUE

DWN. CHK.

06.09.21 ISSUE

Proposed Alteration
69 Evans Street , Freshwater
NSW

LEVEL 9

‘Nominated Architect Stephen Fayle’



WOODHOUSE & DANKS PTY LTD
ARCHITECTS
ABN: 26 064 690 106
ARN: 3274

Suite 207 Level 2, 20 Dale Street, Brookvale NSW 2100
T: (02) 9939 8810
E: admin@woodhousedanks.com.au

SCALE
1:200 M

DATE
SEPT 2021

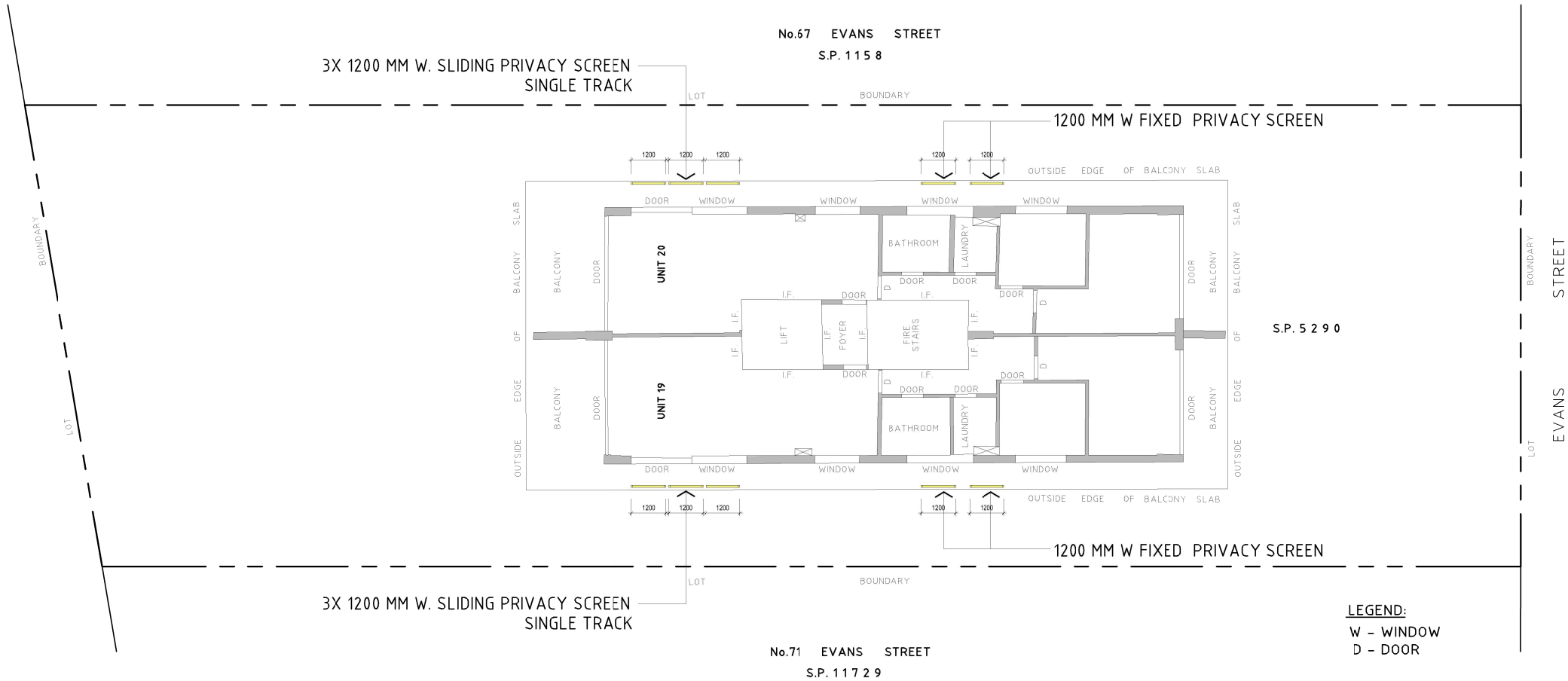
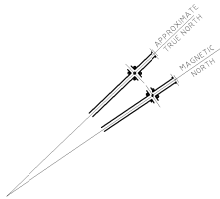
CAD FILE
E:\69 Evans Street, Freshwater\Drawings\2021.08.09

JOB No.
20005

DWG. No. REV

CD 11 -

DRAWN
rjo



GENERAL NOTES
1. CONTRACTORS MUST VERIFY ALL DIMENSIONS ON SITE PRIOR TO THE COMMENCEMENT OF ANY WORK OR THE PREPARATION OF SHOP DRAWINGS.
2. FIGURED DIMENSIONS TO BE USED IN PREFERENCE TO SCALED DIMENSIONS.
USE OF THESE DRAWINGS
The design and details shown on these drawings are applicable to this project only and may not be reproduced in whole or in part or be used for any other project or purpose without the written permission of Woodhouse & Danks Pty. Ltd. with whom copyright resides.

No. DATE REVISION OR ISSUE

DWN. CHK. No. DATE REVISION OR ISSUE

DWN. CHK. No. DATE REVISION OR ISSUE

DWN. CHK.

06.09.21 ISSUE

Proposed Alteration
69 Evans Street , Freshwater
NSW

LEVEL 10

‘Nominated Architect Stephen Fayle’



WOODHOUSE & DANKS PTY LTD
ARCHITECTS

ABN: 26 064 690 106
ARN: 3274

Suite 207 Level 2, 20 Dale Street, Brookvale NSW 2100

T: (02) 9939 8810
E: admin@woodhousedanks.com.au

SCALE
1:200 M

DATE
SEPT 2021

CAD FILE
E:\69 Evans Street, Freshwater\Drawings\2021.08.09

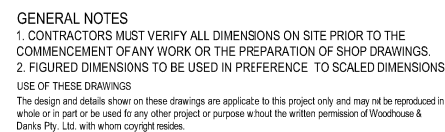
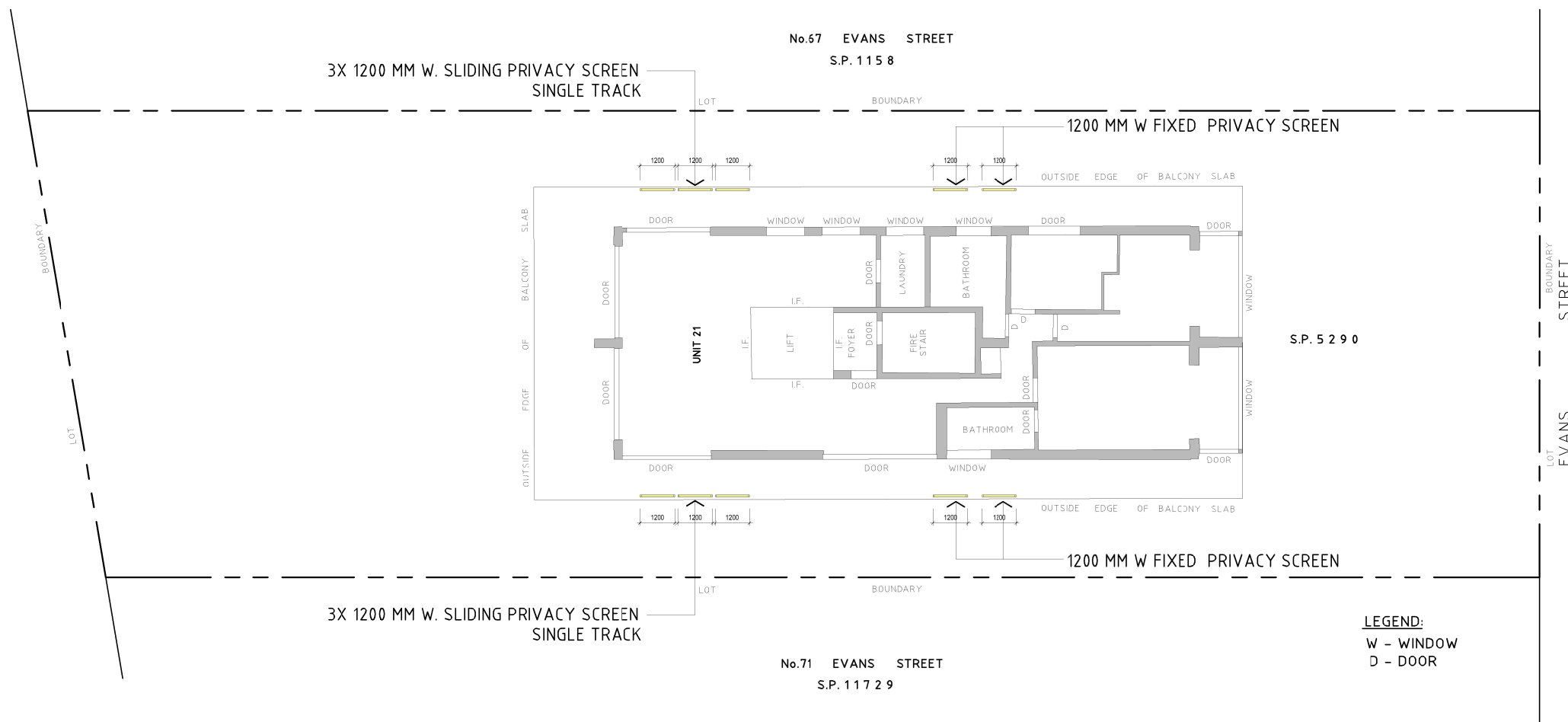
JOB No.

20005

DWG. No. REV

CD 12 -

DRAWN
rjo

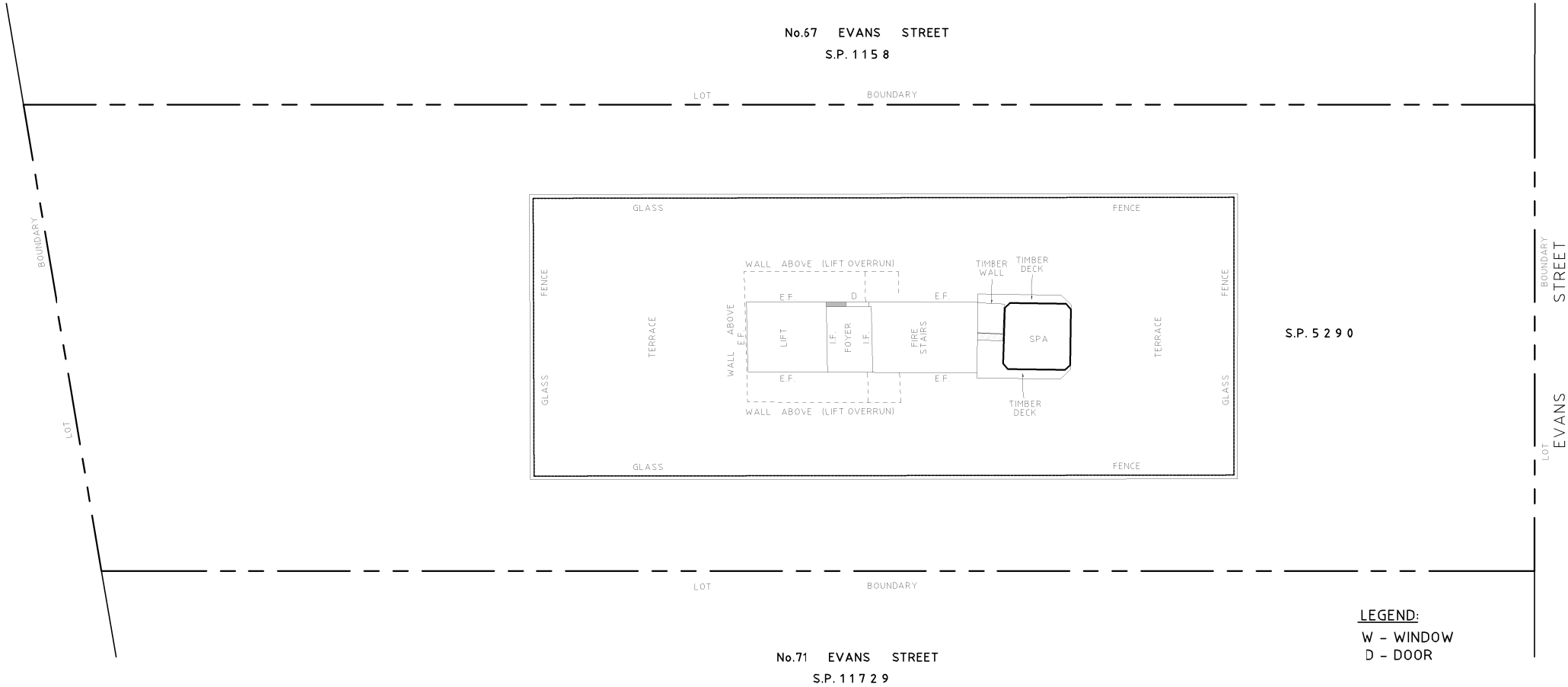
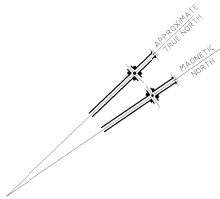


LEVEL 11

CAD FILE
E:\69 Evans Street, Freshwater Drawings\2021.08.0

DRAWN

06.09.21 ISSUE



GENERAL NOTES
1. CONTRACTORS MUST VERIFY ALL DIMENSIONS ON SITE PRIOR TO THE COMMENCEMENT OF ANY WORK OR THE PREPARATION OF SHOP DRAWINGS.
2. FIGURED DIMENSIONS TO BE USED IN PREFERENCE TO SCALED DIMENSIONS.
USE OF THESE DRAWINGS
The design and details shown on these drawings are applicable to this project only and may not be reproduced in whole or in part or be used for any other project or purpose without the written permission of Woodhouse & Danks Pty. Ltd. with whom copyright resides.

No. DATE REVISION OR ISSUE

DWN. CHK. No. DATE REVISION OR ISSUE

DWN. CHK. No. DATE REVISION OR ISSUE

06.09.21 ISSUE

DWN. CHK.

Proposed Alteration
69 Evans Street , Freshwater
NSW

ROOF DECK

‘Nominated Architect Stephen Fayle’



WOODHOUSE & DANKS PTY LTD
ARCHITECTS

ABN: 26 064 690 106
ARN: 3274

Suite 207 Level 2, 20 Dale Street, Brookvale NSW 2100

T: (02) 9939 8810
E: admin@woodhousedanks.com.au

SCALE
1:200 M

DATE
SEPT 2021

CAD FILE
E:\69 Evans Street, Freshwater\Drawings\2021.08.09

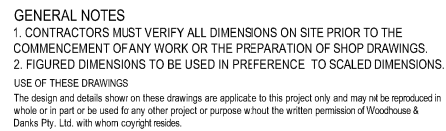
JOB No.

20005

DWG. No. REV

CD 14 -

DRAWN
rjo

 VERTICAL PRIVACY SCREEN

ELEVATION EASTERN WALL

 **WOODHOUSE & DANKS** PTY LTD
ARCHITECTS
Stephen R Fayle
ABN 26 064 690 106
ARN 3274

Suite 207 Level 2, 20 Dale Street, Brookvale NSW 2100
T: (02) 9939 8810
E: admin@woodhousedanks.com.au

SCALE DATE DRAWN
1:200 M CAD FILE E:\69 Evans Street, Freshwater\Drawings\2021.08.09

DWN. CHK.

1200 MM WIDTH SLIDING PRIVACY SCREEN
VERTICAL PRIVACY SCREEN



GENERAL NOTES
1. CONTRACTORS MUST VERIFY ALL DIMENSIONS ON SITE PRIOR TO THE COMMENCEMENT OF ANY WORK OR THE PREPARATION OF SHOP DRAWINGS.
2. FIGURED DIMENSIONS TO BE USED IN PREFERENCE TO SCALED DIMENSIONS.
USE OF THESE DRAWINGS
The design and details shown on these drawings are applicable to this project only and may not be reproduced in whole or in part or be used for any other project or purpose without the written permission of Woodhouse & Danks Pty. Ltd. with whom copyright resides.

No. DATE REVISION OR ISSUE

DWN. CHK. No. DATE REVISION OF ISSUE

"a" 14.12.21 "a" Vertical privacy screen over foyer
06.09.21 ISSUE

DWN. CHK. No. DATE REVISION OF ISSUE

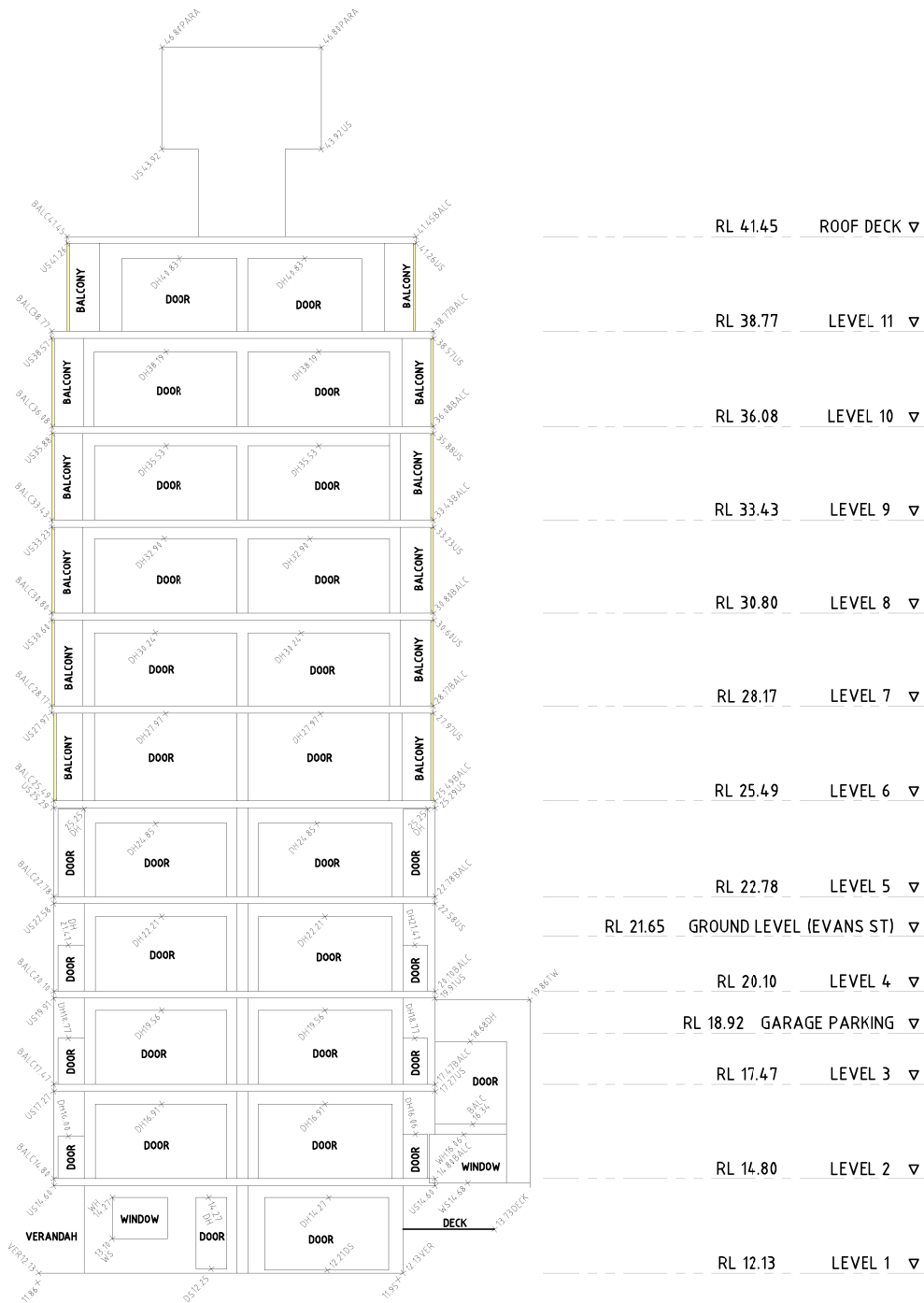
DWN. CHK.

Proposed Alteration
69 Evans Street, Freshwater
NSW
ELEVATION WESTERN WALL

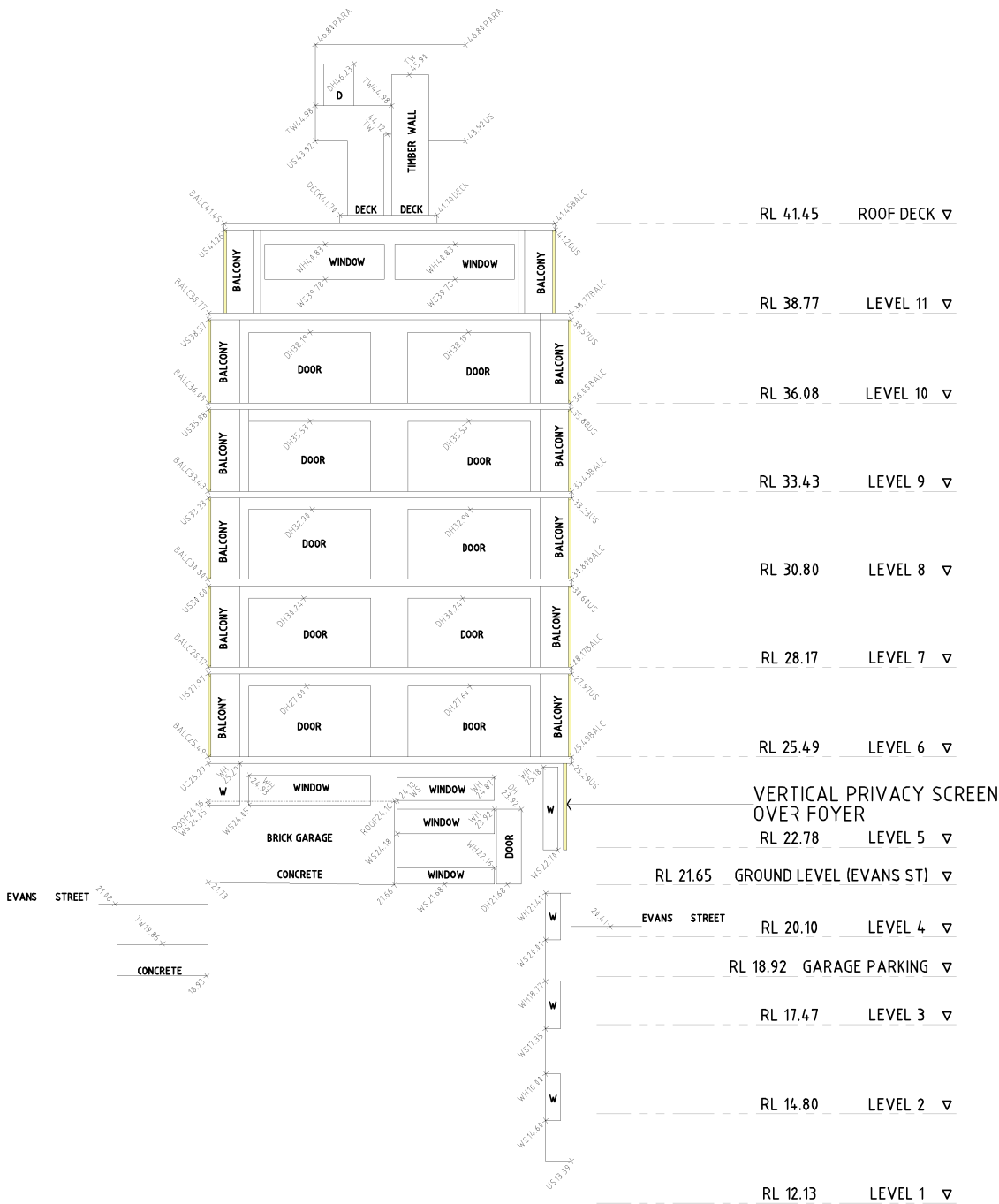
WOODHOUSE & DANKS ARCHITECTS
Suite 207 Level 2, 20 Dale Street, Brookvale NSW 2100
E: admin@woodhousedanks.com.au
T: (02) 9939 8810
F: (02) 9939 8810
A: 69 Evans Street, Freshwater
NSW 1586
JOB No. 20005
DWG. No. CD 21 a
REV. jjo
SCALE 1:200 M
DATE DEC 2021
CADD FILE E:\69 Evans Street, Freshwater\Drawings\2021.08.09

1200 MM WIDTH SLIDING PRIVACY SCREEN

VERTICAL PRIVACY SCREEN



ELEVATION OF SOUTHERN WALL



ELEVATION OF NORTHERN WALL



GENERAL NOTES

1. CONTRACTORS MUST VERIFY ALL DIMENSIONS ON SITE PRIOR TO THE COMMENCEMENT OF ANY WORK OR THE PREPARATION OF SHOP DRAWINGS.

2. FIGURED DIMENSIONS TO BE USED IN PREFERENCE TO SCALED DIMENSIONS.

USE OF THESE DRAWINGS

The design and details shown on these drawings are applicable to this project only and may not be reproduced in whole or in part or be used for any other project or purpose without the written permission of Woodhouse & Danks Pty. Ltd. with whom copyright resides.

No. DATE REVISION OR ISSUE

DWN. CHK. No. DATE REVISION OR ISSUE

"a" 14.12.21 "a" Vertical privacy screen over foyer
06.09.21 ISSUE

DWN. CHK.

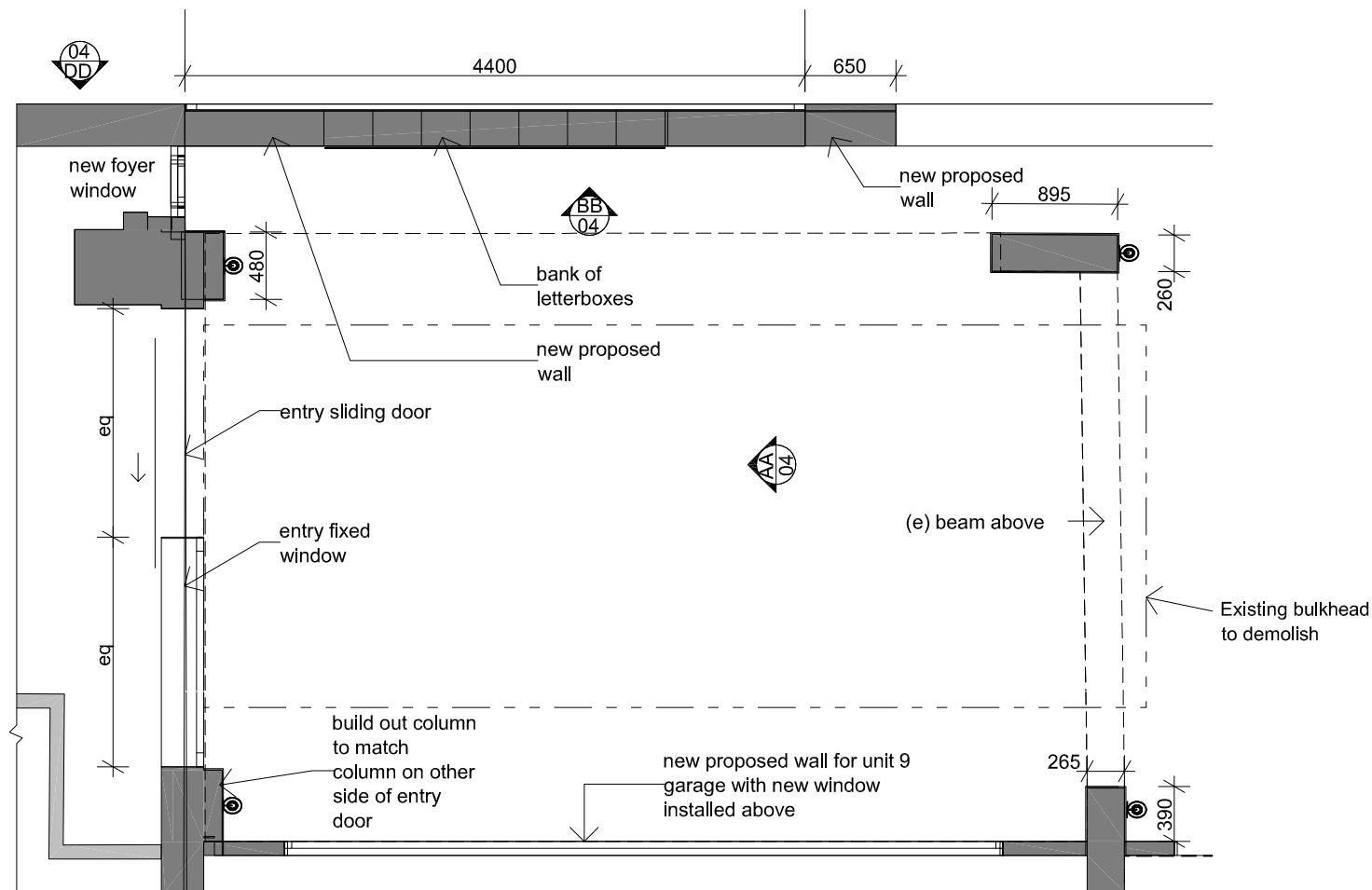
Proposed Alteration
69 Evans Street , Freshwater
NSW

ELEVATION SOUTHERN & NORTHERN WALL

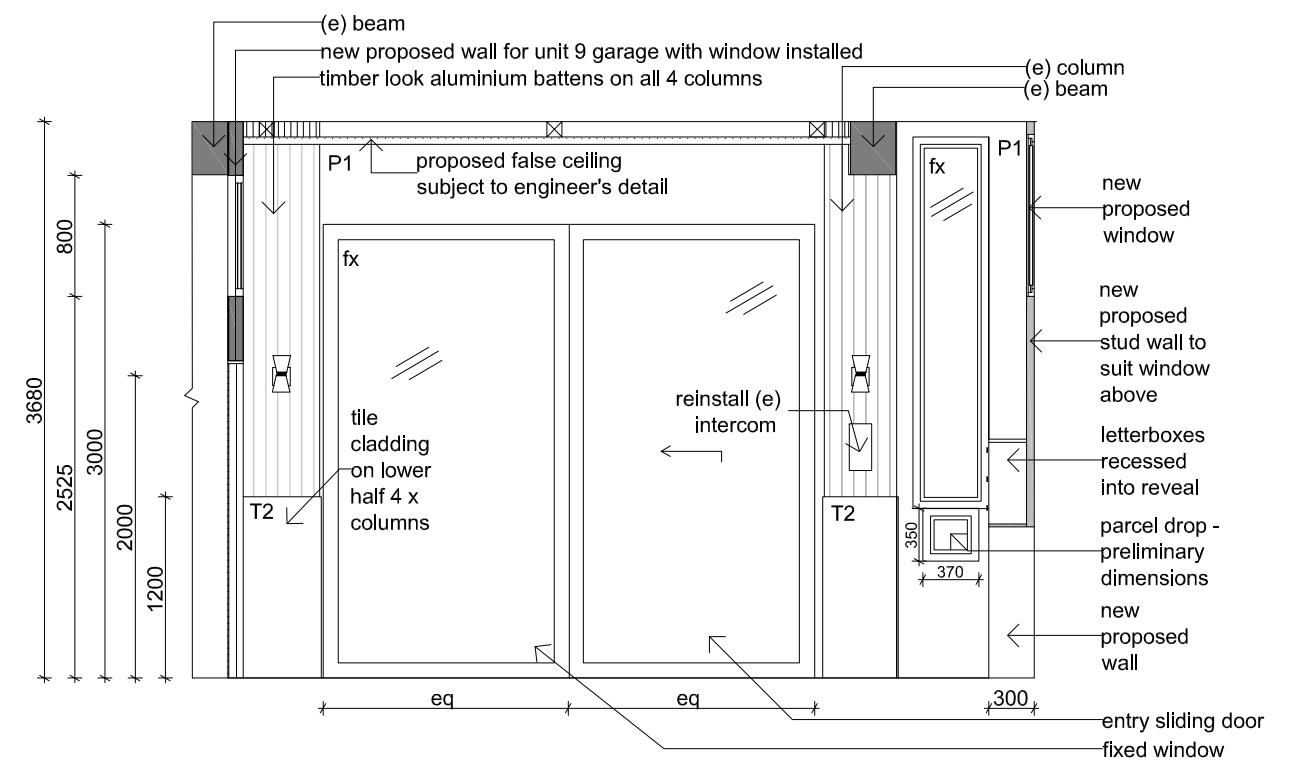
WOODHOUSE & DANKS PTY LTD
ARCHITECTS
ABN 26 064 690 106
ARNZ 3274
Suite 207 Level 2, 20 Dale Street, Brookvale NSW 2100
E: admin@woodhousedanks.com.au
T: (02) 9939 8810
DATE DEC 2021
CAD FILE
E: 69 Evans Street, Freshwater Drawings 2021.08.09

JOB No.
20005
DWG. No.
REV
CD 22 a
DRAWN
rjo

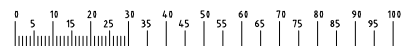
SCALE
1:200 M



01 Entry Plan
1:50



AA Entry Elevation
1:50



GENERAL NOTES
1. CONTRACTORS MUST VERIFY ALL DIMENSIONS ON SITE PRIOR TO THE COMMENCEMENT OF ANY WORK OR THE PREPARATION OF SHOP DRAWINGS.
2. FIGURED DIMENSIONS TO BE USED IN PREFERENCE TO SCALED DIMENSIONS.
USE OF THESE DRAWINGS
The design and details shown on these drawings are applicable to this project only and may not be reproduced in whole or in part or be used for any other project or purpose without the written permission of Woodhouse & Danks Pty. Ltd. with whom copyright resides.

No. DATE REVISION OR ISSUE

DWN. CHK. No. DATE REVISION OR ISSUE

09.08.21 ISSUE
DWN. CHK. No. DATE REVISION OR ISSUE

DWN. CHK.

Proposed Alteration
69 Evans Street, Freshwater
NSW

ENTRY PLAN & ELEVATION

'Nominated Architect Stephen Fayle'
DESIGN SUPPLIED BY: KH DESIGN GROUP



WOODHOUSE & DANKS PTY LTD
ARCHITECTS
ABN: 26 064 690 106
ARN: 3274

Suite 207 Level 2, 20 Dale Street, Brookvale NSW 2100

T: (02) 9939 8810
E: admin@woodhousedanks.com.au

SCALE
1:50 @A3:

DATE
AUG 2021

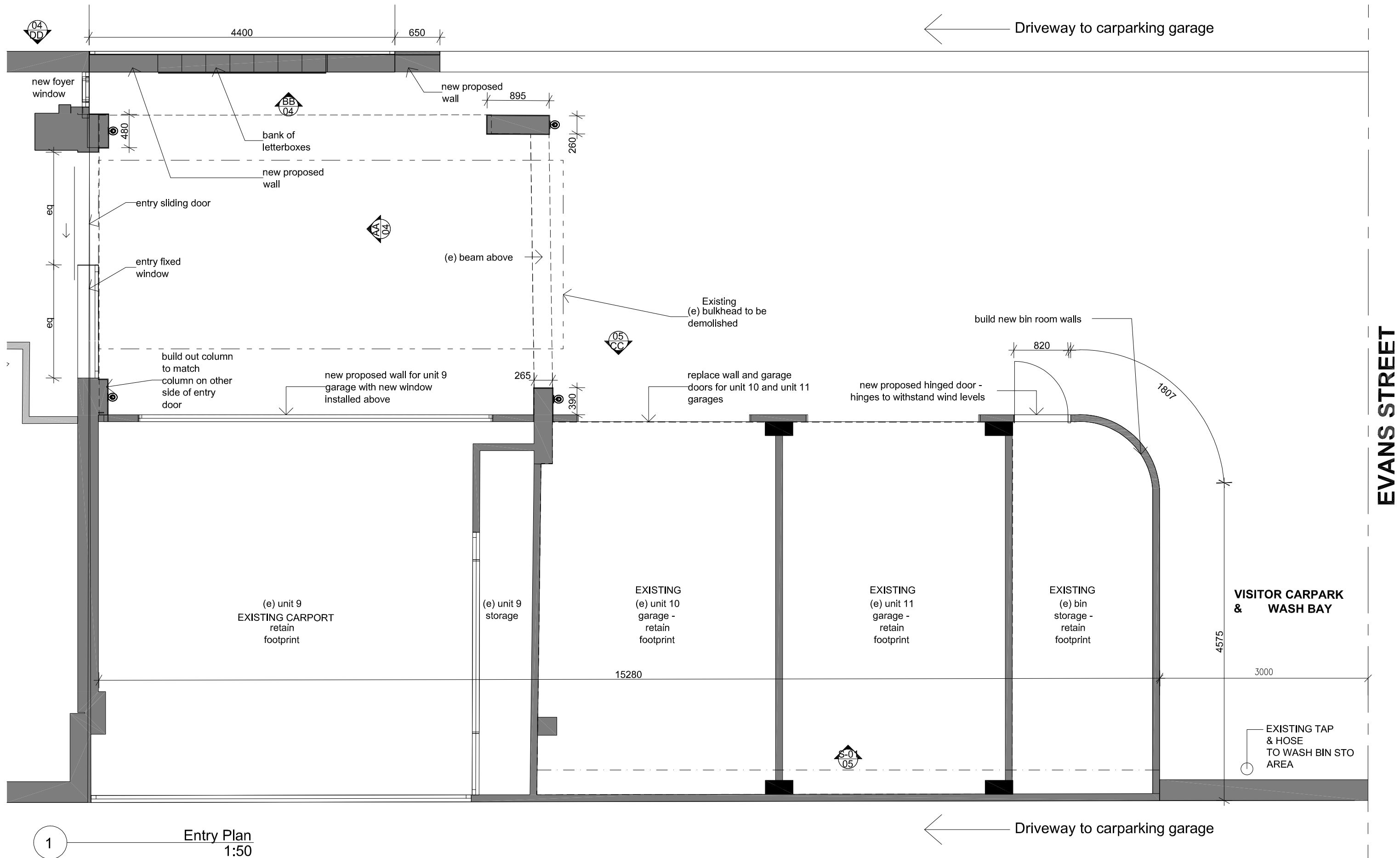
CAD FILE
E:\69 Evans Street, Freshwater\Drawings\2021.08.09

JOB No.
20005

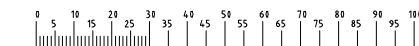
DWG. No. REV

CD-40-

DRAWN
rjo



1 Entry Plan
1:50



GENERAL NOTES
1. CONTRACTORS MUST VERIFY ALL DIMENSIONS ON SITE PRIOR TO THE COMMENCEMENT OF ANY WORK OR THE PREPARATION OF SHOP DRAWINGS.
2. FIGURED DIMENSIONS TO BE USED IN PREFERENCE TO SCALED DIMENSIONS.
USE OF THESE DRAWINGS
The design and details shown on these drawings are applicable to this project only and may not be reproduced in whole or in part or be used for any other project or purpose without the written permission of Woodhouse & Danks Pty. Ltd. with whom copyright resides.

No. DATE REVISION OR ISSUE

DWN. CHK. No. DATE REVISION OR ISSUE

09.08.21 ISSUE
DWN. CHK. No. DATE REVISION OR ISSUE

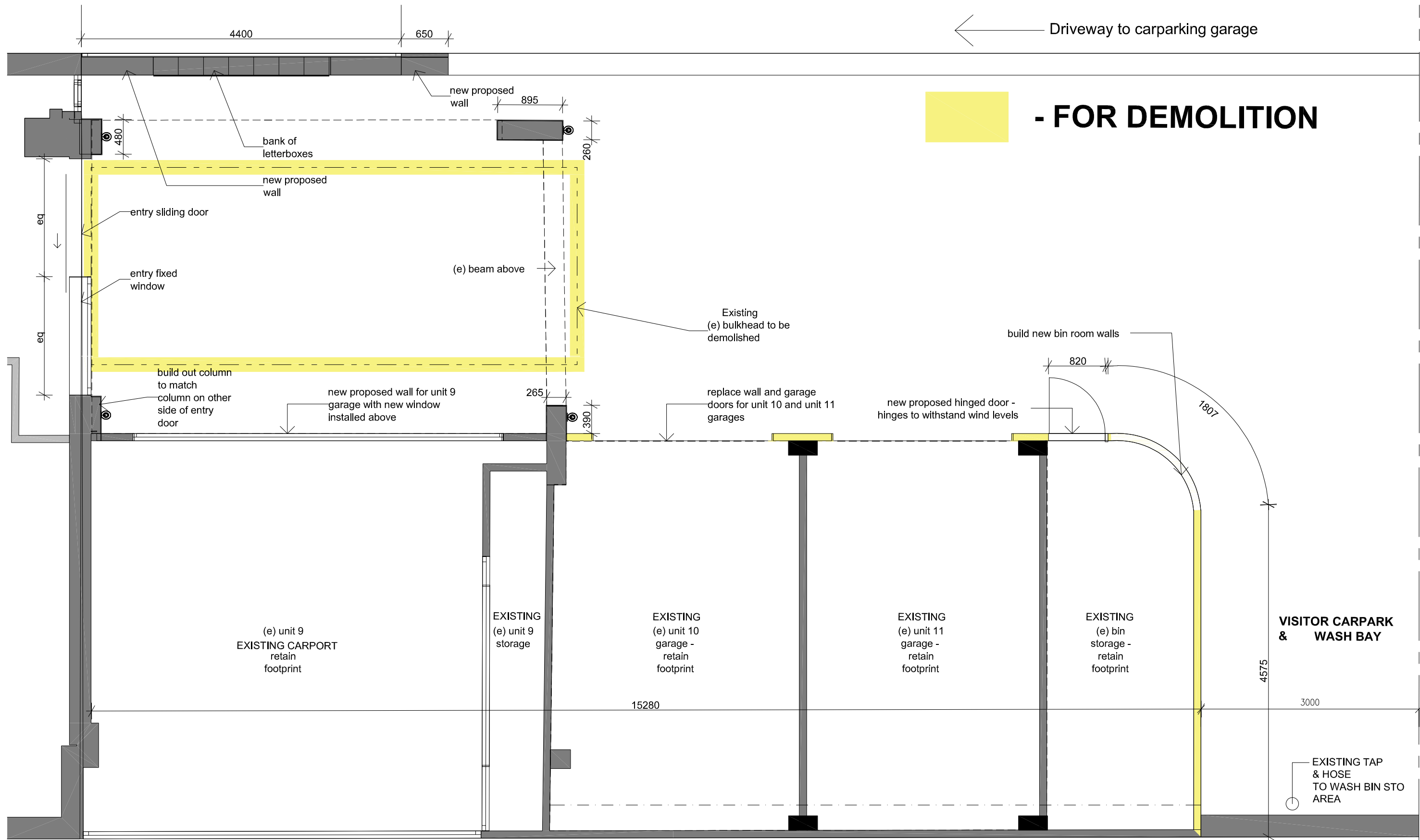
DWN. CHK.

Proposed Alteration
69 Evans Street, Freshwater
NSW

ENTRY PLAN

'Nominated Architect Stephen Fayle'
DESIGN SUPPLIED BY: KH DESIGN GROUP

JOB No. 20005
WOODHOUSE & DANKS PTY LTD
ARCHITECTS
Suite 207 Level 2, 20 Dale Street, Brookvale NSW 2100
T: (02) 9939 8810
E: admin@woodhousedanks.com.au
SCALE 1:50 @A3:
DATE AUG 2021
DRAWN rjo
DWG. No. CD-41 -
REV



- FOR DEMOLITION

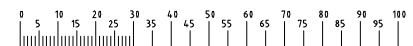
EVANS STREET

VISITOR CARPARK & WASH BAY

EXISTING TAP & HOSE TO WASH BIN STO AREA

Demolition Plan
1:50

1



GENERAL NOTES
1. CONTRACTORS MUST VERIFY ALL DIMENSIONS ON SITE PRIOR TO THE COMMENCEMENT OF ANY WORK OR THE PREPARATION OF SHOP DRAWINGS.
2. FIGURED DIMENSIONS TO BE USED IN PREFERENCE TO SCALED DIMENSIONS.
USE OF THESE DRAWINGS
The design and details shown on these drawings are applicable to this project only and may not be reproduced in whole or in part or be used for any other project or purpose without the written permission of Woodhouse & Danks Pty. Ltd. with whom copyright resides.

No. DATE REVISION OR ISSUE

DWN. CHK. No. DATE REVISION OR ISSUE

09.08.21 ISSUE

DWN. CHK.

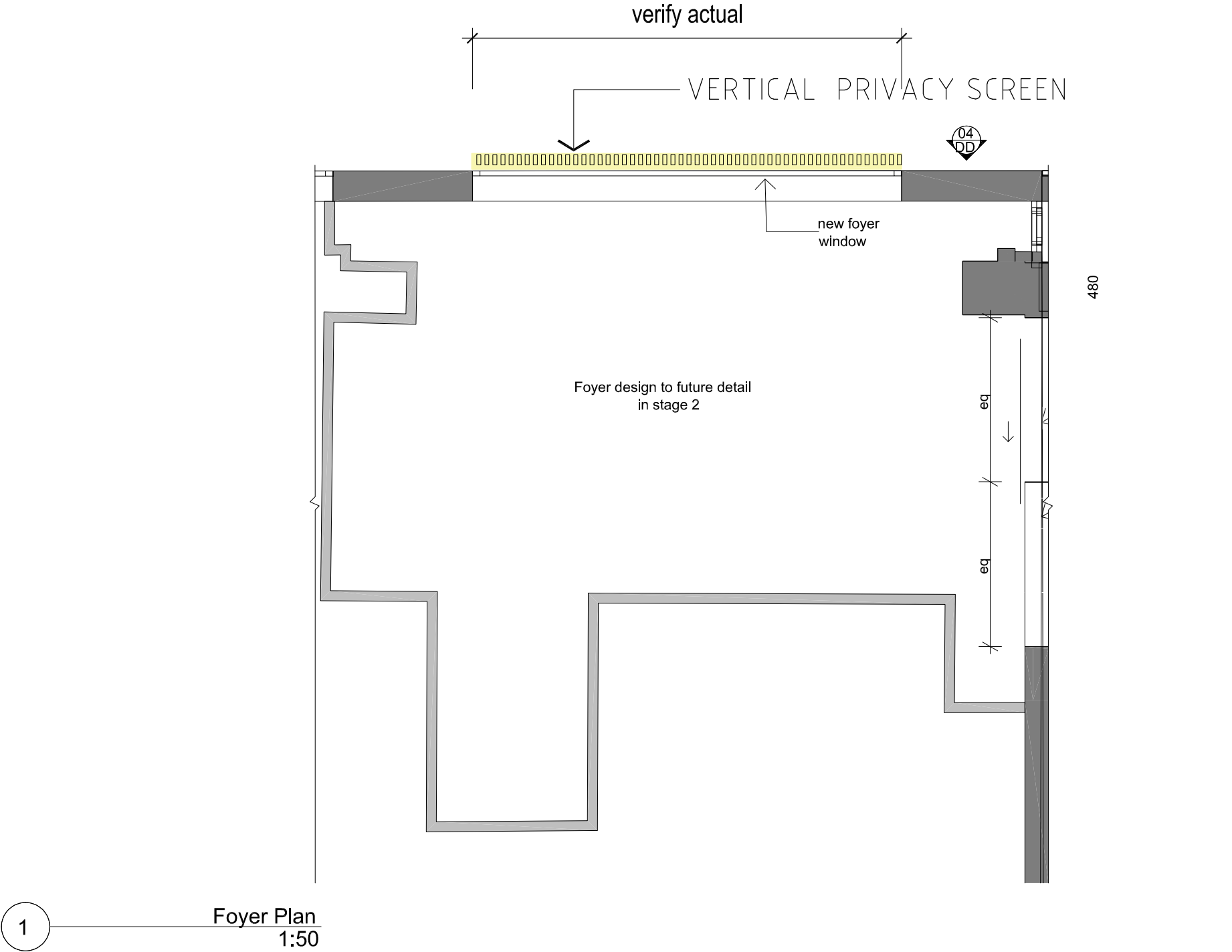
Proposed Alteration
69 Evans Street, Freshwater
NSW

DEMOLITION PLAN

'Nominated Architect Stephen Fayle'
DESIGN SUPPLIED BY: KH DESIGN GROUP

WOODHOUSE & DANKS PTY LTD
ARCHITECTS
Suite 207 Level 2, 20 Dale Street, Brookvale NSW 2100
T: (02) 9939 8810
E: admin@woodhousedanks.com.au

JOB No. **20005**
DWG. No. **CD-42**
REV
DATE **AUG 2021**
SCALE **1:50 @A3:**
DRAWN **rjo**
E:\69 Evans Street, Freshwater\Drawings\2021\08.09



0 5 10 15 20 25 30 35 40 45 50 55 60 65 70 75 80 85 90 95 100

GENERAL NOTES
1. CONTRACTORS MUST VERIFY ALL DIMENSIONS ON SITE PRIOR TO THE COMMENCEMENT OF ANY WORK OR THE PREPARATION OF SHOP DRAWINGS.
2. FIGURED DIMENSIONS TO BE USED IN PREFERENCE TO SCALED DIMENSIONS.
USE OF THESE DRAWINGS
The design and details shown on these drawings are applicable to this project only and may not be reproduced in whole or in part or be used for any other project or purpose without the written permission of Woodhouse & Danks Pty. Ltd. with whom copyright resides.

No. DATE REVISION OR ISSUE

DWN. CHK. No. DATE REVISION OR ISSUE

"a" 14.12.21 "a" Vertical privacy screen over foyer
09.08.21 ISSUE

DWN. CHK.

Proposed Alteration
69 Evans Street , Freshwater
NSW

FOYER PLAN

'Nominated Architect Stephen Fayle'
DESIGN SUPPLIED BY: KH DESIGN GROUP



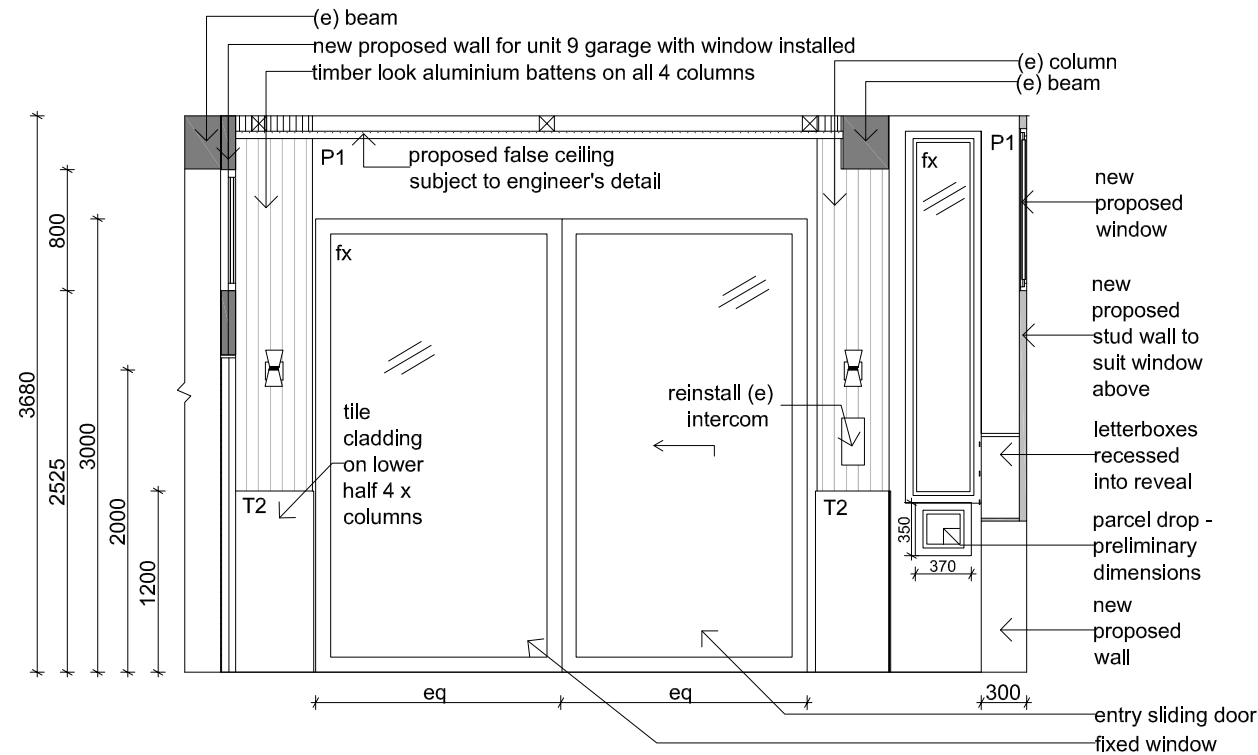
WOODHOUSE & DANKS PTY LTD
ARCHITECTS
Stephen R Fayle
Suite 207 Level 2, 20 Dale Street, Brookvale NSW 2100
E: admin@woodhousedanks.com.au
T: (02) 9939 8810
A/NZ: 26 064 690 106
ARN: 3274

JOB No.
20005

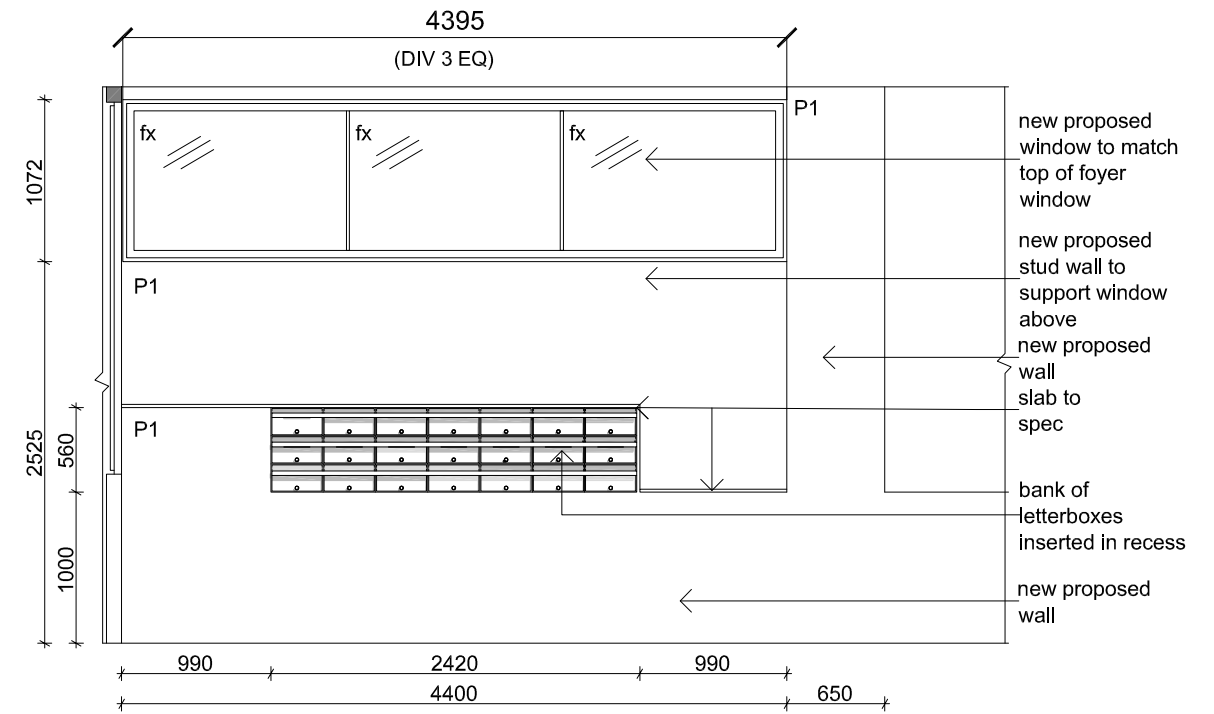
DWG. No. REV
CD-43 -
DRAWN rjo

SCALE
1:50 @A3:

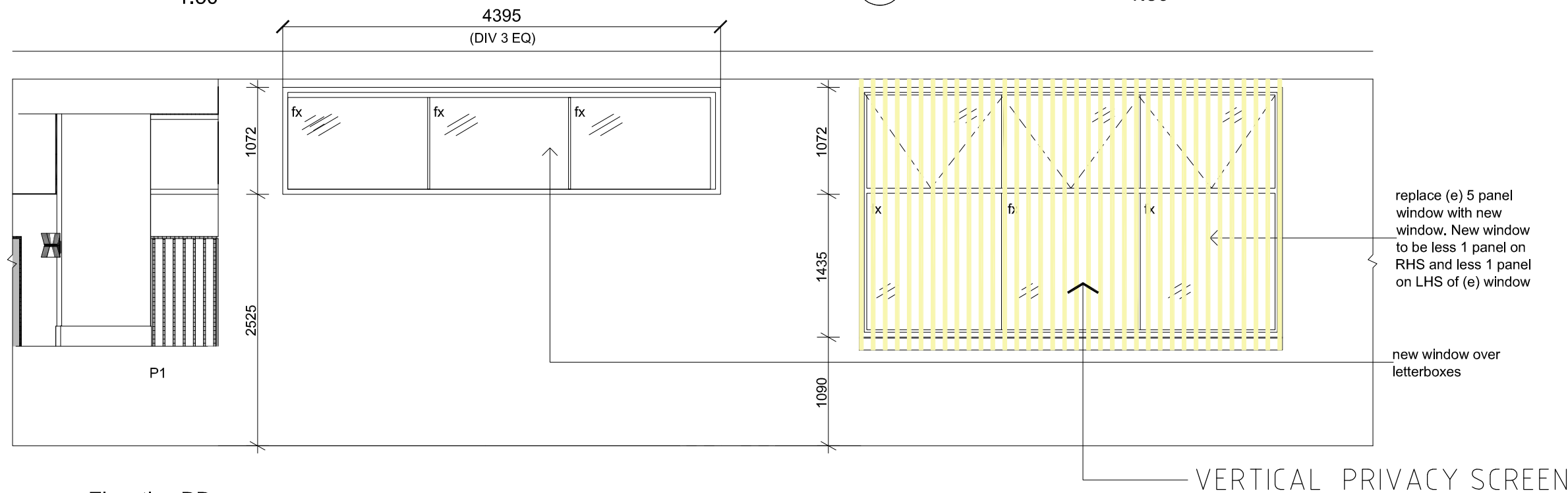
DATE AUG 2021
CAD FILE
E:\69 Evans Street, Freshwater\Drawings\2021.08.09



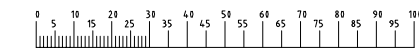
1 Elevation AA
1:50



2 Elevation BB
1:50



3 Elevation DD
1:50



GENERAL NOTES
1. CONTRACTORS MUST VERIFY ALL DIMENSIONS ON SITE PRIOR TO THE COMMENCEMENT OF ANY WORK OR THE PREPARATION OF SHOP DRAWINGS.
2. FIGURED DIMENSIONS TO BE USED IN PREFERENCE TO SCALED DIMENSIONS.
USE OF THESE DRAWINGS
The design and details shown on these drawings are applicable to this project only and may not be reproduced in whole or in part or be used for any other project or purpose without the written permission of Woodhouse & Danks Pty. Ltd. with whom copyright resides.

No. DATE REVISION OR ISSUE

DWN. CHK. No. DATE REVISION OR ISSUE

"a" 14.12.21 "a" Vertical privacy screen over foyer
09.08.21 ISSUE

DWN. CHK. No. DATE REVISION OR ISSUE

DWN. CHK.

Proposed Alteration
69 Evans Street, Freshwater
NSW

ELEVATION AA, BB, DD

'Nominated Architect Stephen Fayle'
DESIGN SUPPLIED BY: KH DESIGN GROUP



WOODHOUSE & DANKS PTY LTD
ARCHITECTS
Stephen R Fayle
ABN: 26 064 690 106
ARN: 32714

Suite 207 Level 2, 20 Dale Street, Brookvale NSW 2100

T: (02) 9939 8810
E: admin@woodhousedanks.com.au

SCALE

DATE DEC 2021

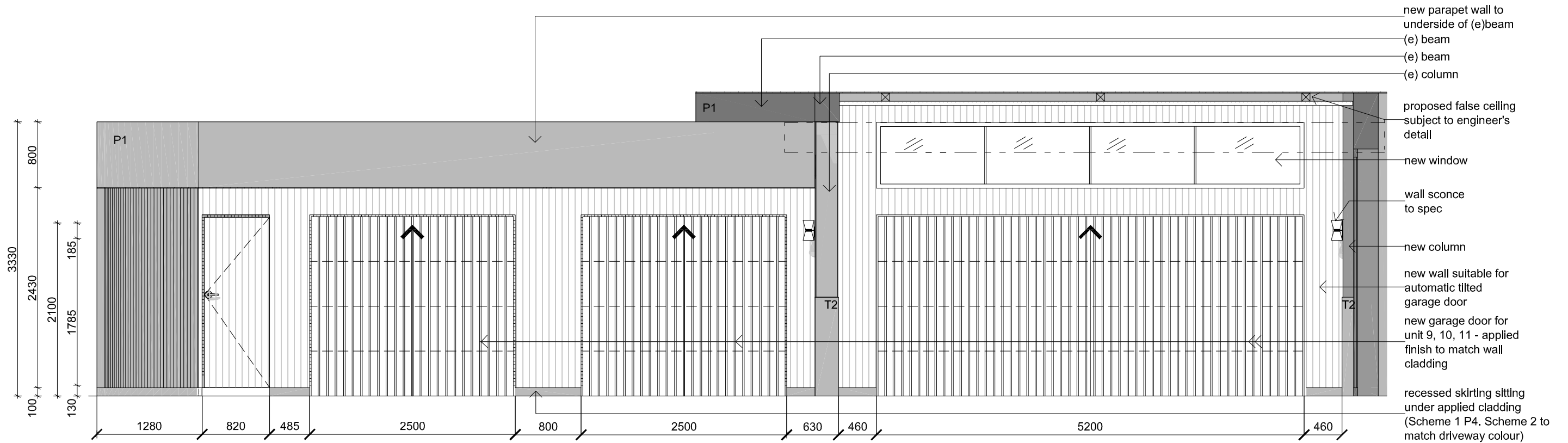
CAD FILE
E:\69 Evans Street, Freshwater\Drawings\2021.08.09

JOB No.
20005

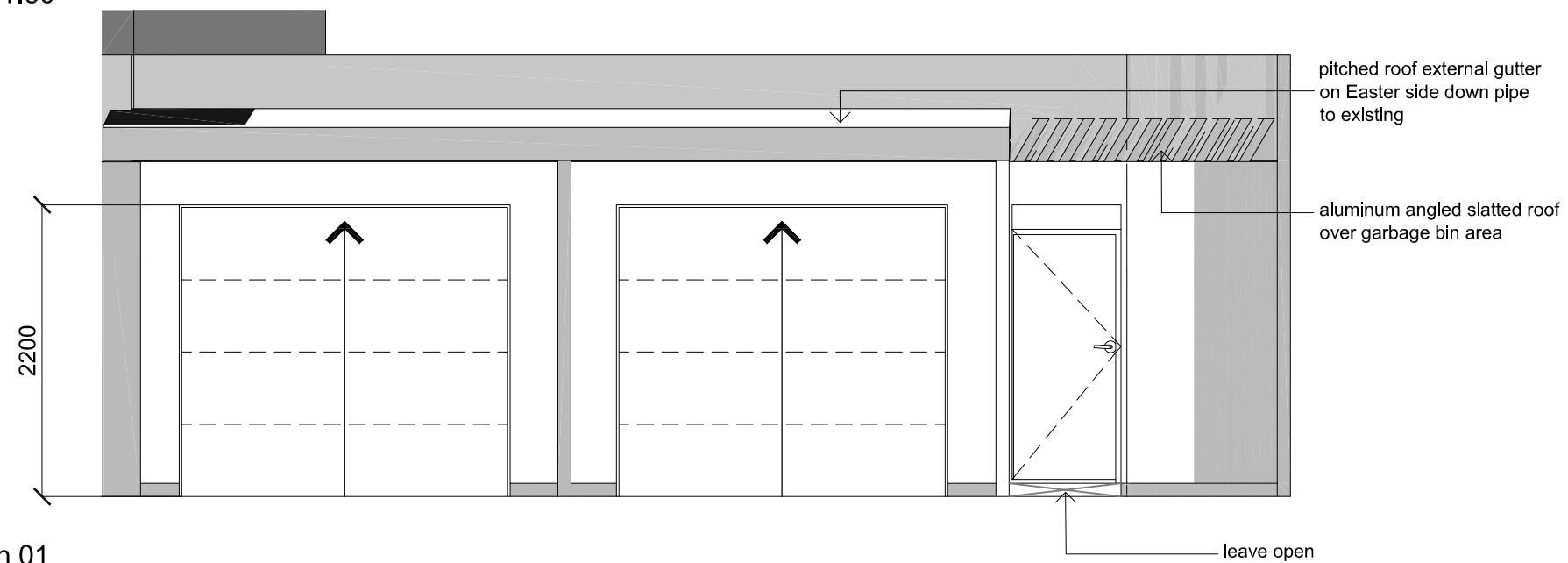
DWG. No. REV

CD-44 a

DRAWN rjo



1 Elevation CC
1:50



2 Section 01
1:50



GENERAL NOTES
1. CONTRACTORS MUST VERIFY ALL DIMENSIONS ON SITE PRIOR TO THE COMMENCEMENT OF ANY WORK OR THE PREPARATION OF SHOP DRAWINGS.
2. FIGURED DIMENSIONS TO BE USED IN PREFERENCE TO SCALED DIMENSIONS.
USE OF THESE DRAWINGS
The design and details shown on these drawings are applicable to this project only and may not be reproduced in whole or in part or be used for any other project or purpose without the written permission of Woodhouse & Danks Pty. Ltd. with whom copyright resides.

No. DATE REVISION OR ISSUE

DWN. CHK. No. DATE REVISION OR ISSUE

09.08.21 ISSUE
DWN. CHK. No. DATE REVISION OR ISSUE

DWN. CHK.

Proposed Alteration
69 Evans Street , Freshwater
NSW

ELEVATION CC, SECTION 01

'Nominated Architect Stephen Fayle'
DESIGN SUPPLIED BY: KH DESIGN GROUP



WOODHOUSE & DANKS PTY LTD
ARCHITECTS
ABN: 26 064 690 106
ARN: 32714

Suite 207 Level 2, 20 Dale Street, Brookvale NSW 2100

T: (02) 9939 8810
E: admin@woodhousedanks.com.au

SCALE

DATE AUG 2021

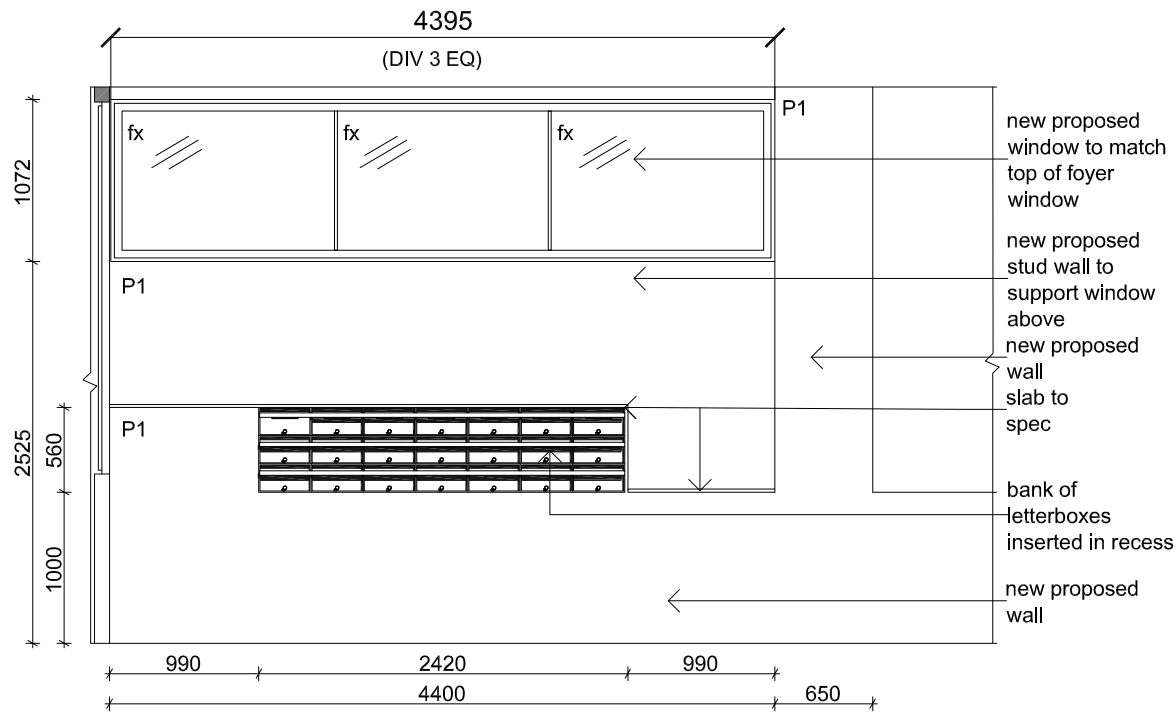
CAD FILE
E:\69 Evans Street, Freshwater\Drawings\2021.08.09

JOB No.
20005

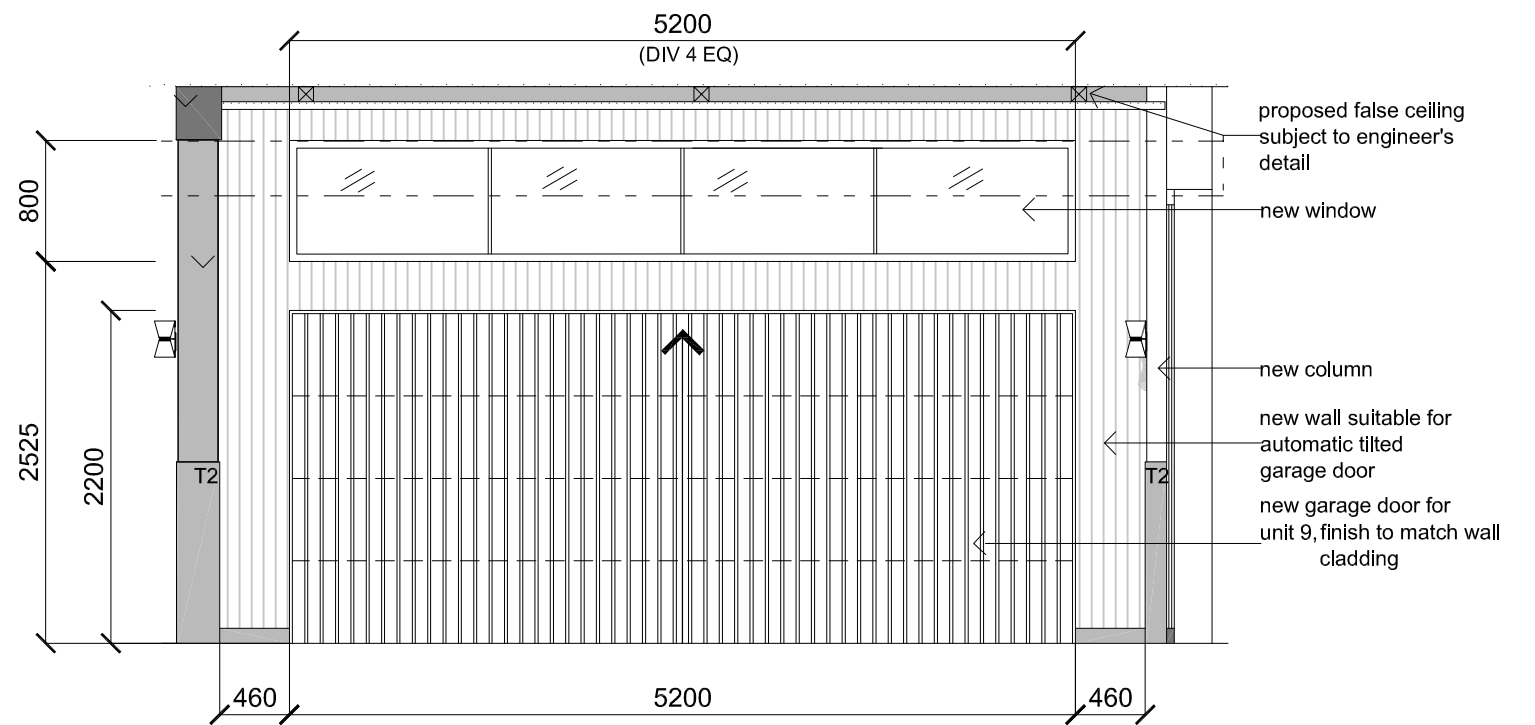
DWG. No. REV

CD-45

DRAWN rjo



BB Letterbox Elevation
1:50



CC No. 9 Garage Elevation
1:50



GENERAL NOTES
1. CONTRACTORS MUST VERIFY ALL DIMENSIONS ON SITE PRIOR TO THE COMMENCEMENT OF ANY WORK OR THE PREPARATION OF SHOP DRAWINGS.
2. FIGURED DIMENSIONS TO BE USED IN PREFERENCE TO SCALED DIMENSIONS.
USE OF THESE DRAWINGS
The design and details shown on these drawings are applicable to this project only and may not be reproduced in whole or in part or be used for any other project or purpose without the written permission of Woodhouse & Danks Pty. Ltd. with whom copyright resides.

No. DATE REVISION OR ISSUE

DWN. CHK. No. DATE REVISION OR ISSUE

DWN. CHK. No. DATE REVISION OR ISSUE

09.08.21 ISSUE

DWN. CHK.

LETTER BOX BB, NO.9 GARAGE ELEVATION

Proposed Alteration
69 Evans Street , Freshwater
NSW

'Nominated Architect Stephen Fayle'
DESIGN SUPPLIED BY: KH DESIGN GROUP



WOODHOUSE & DANKS PTY LTD
ARCHITECTS
ABN: 26 064 690 106
Stephen R Fayle
ARN: 32714

Suite 207 Level 2, 20 Dale Street, Brookvale NSW 2100

T: (02) 9939 8810
E: admin@woodhousedanks.com.au

SCALE
1:50 @A3:

DATE
AUG 2021

E:\STEPHEN FAYLE PROJ\189 Evans st freshwater\Drawings

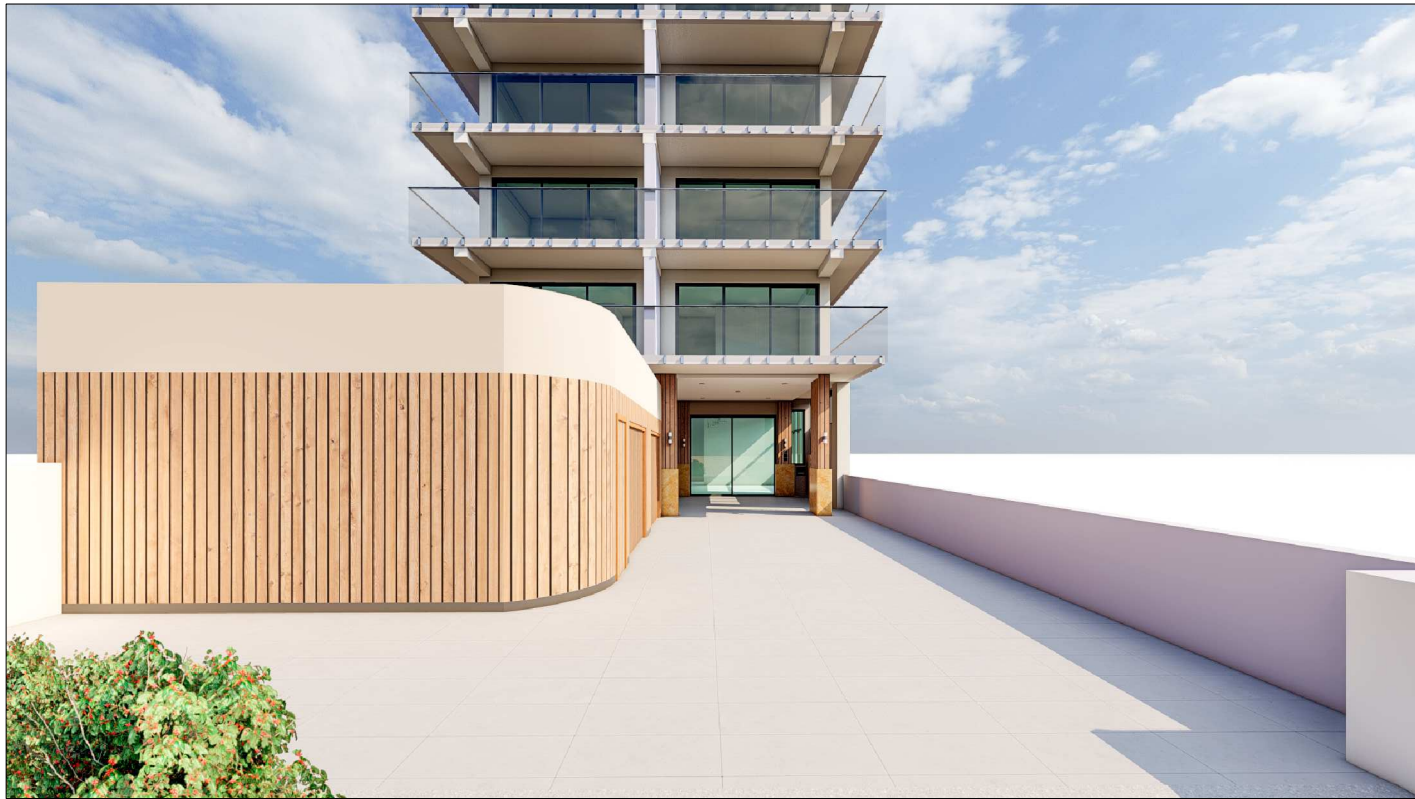
JOB No.

20005

DWG. No. REV

CD-46 -

DRAWN rjo



01

Entry View



02

Entry View



03

Entry View



GENERAL NOTES
1. CONTRACTORS MUST VERIFY ALL DIMENSIONS ON SITE PRIOR TO THE COMMENCEMENT OF ANY WORK OR THE PREPARATION OF SHOP DRAWINGS.
2. FIGURED DIMENSIONS TO BE USED IN PREFERENCE TO SCALED DIMENSIONS.
USE OF THESE DRAWINGS
The design and details shown on these drawings are applicable to this project only and may not be reproduced in whole or in part or be used for any other project or purpose without the written permission of Woodhouse & Danks Pty. Ltd. with whom copyright resides.

No. DATE REVISION OR ISSUE

DWN. CHK. No. DATE REVISION OR ISSUE

"a" 14.12.21 "a" Vertical Screen over foyer
09.08.21 ISSUE

DWN. CHK. No. DATE REVISION OR ISSUE

DWN. CHK.

Proposed Alteration
69 Evans Street , Freshwater
NSW

ENTRY VIEW

'Nominated Architect Stephen Fayle'
DESIGN SUPPLIED BY: KH DESIGN GROUP



WOODHOUSE & DANKS PTY LTD
ARCHITECTS
Stephen R Fayle
ABN: 26 064 690 106
ARN: 3274

Suite 207 Level 2, 20 Dale Street, Brookvale NSW 2100

T: (02) 9939 8810
E: admin@woodhousedanks.com.au

SCALE
NOT TO SCALE

DATE
AUG 2021

E:\STEPHEN FAYLE PROJ\189 Evans st freshwater\Drawings

JOB No.
20005

DWG. No. REV

CD-47 a

DRAWN
rjo