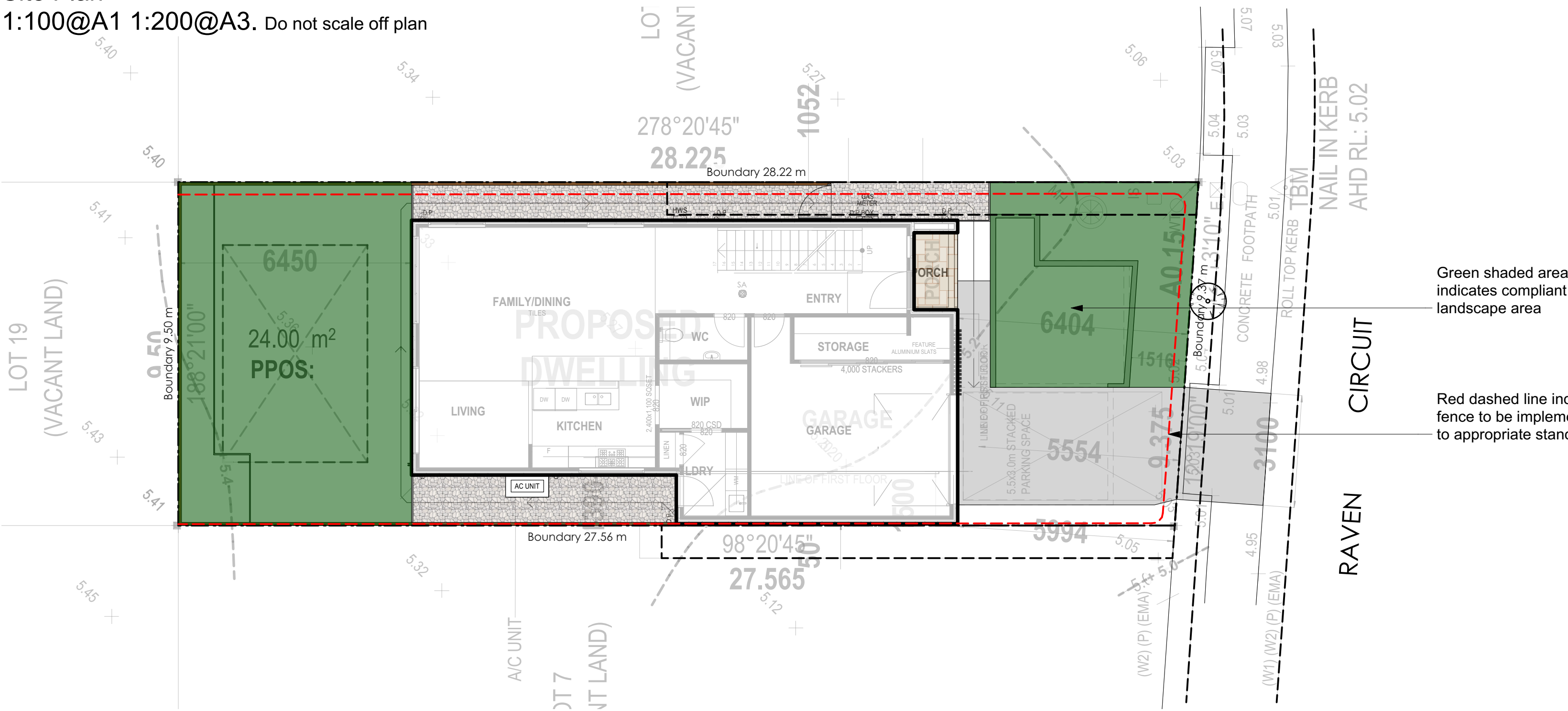
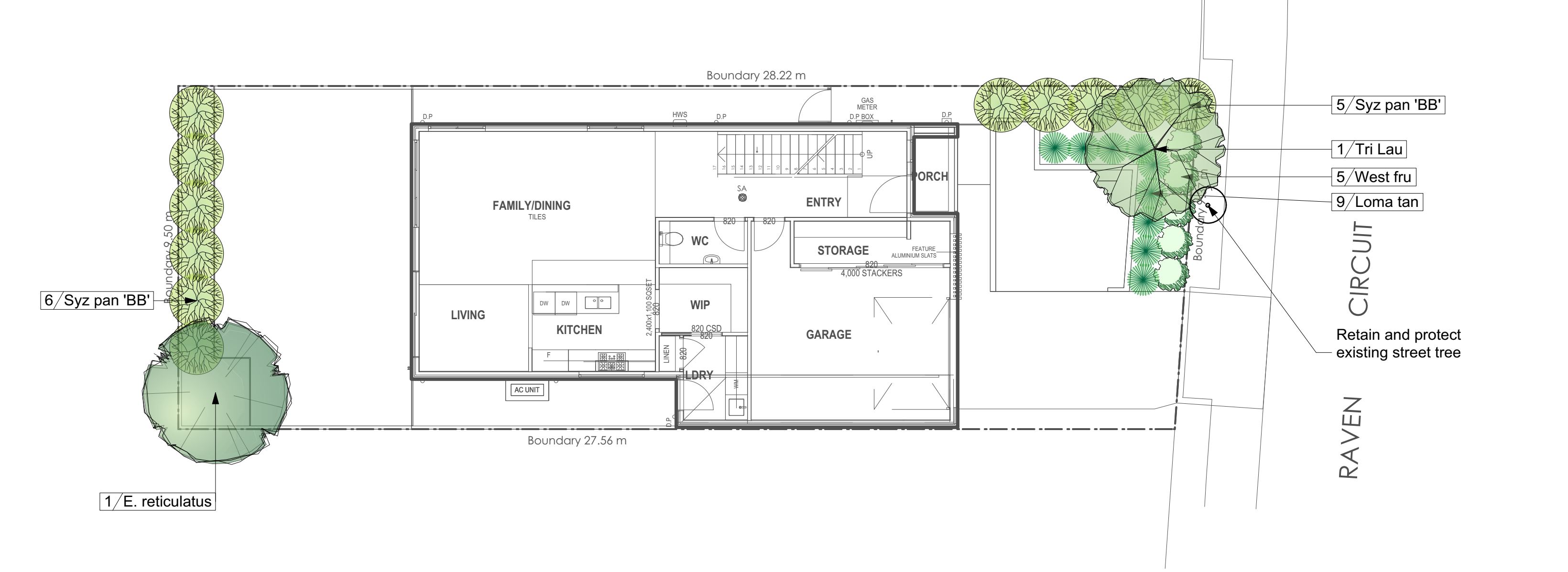


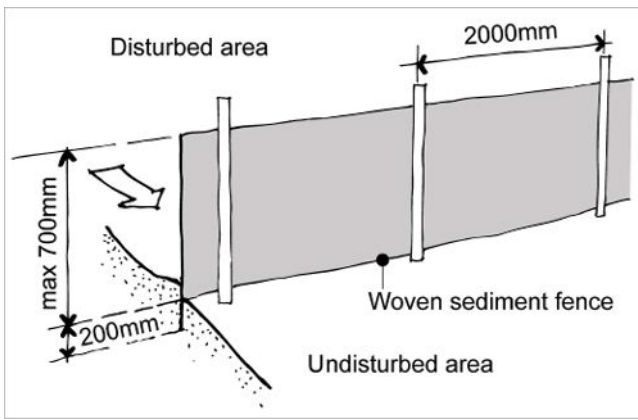
Site Plan
1:100@A1 1:200@A3. Do not scale off plan



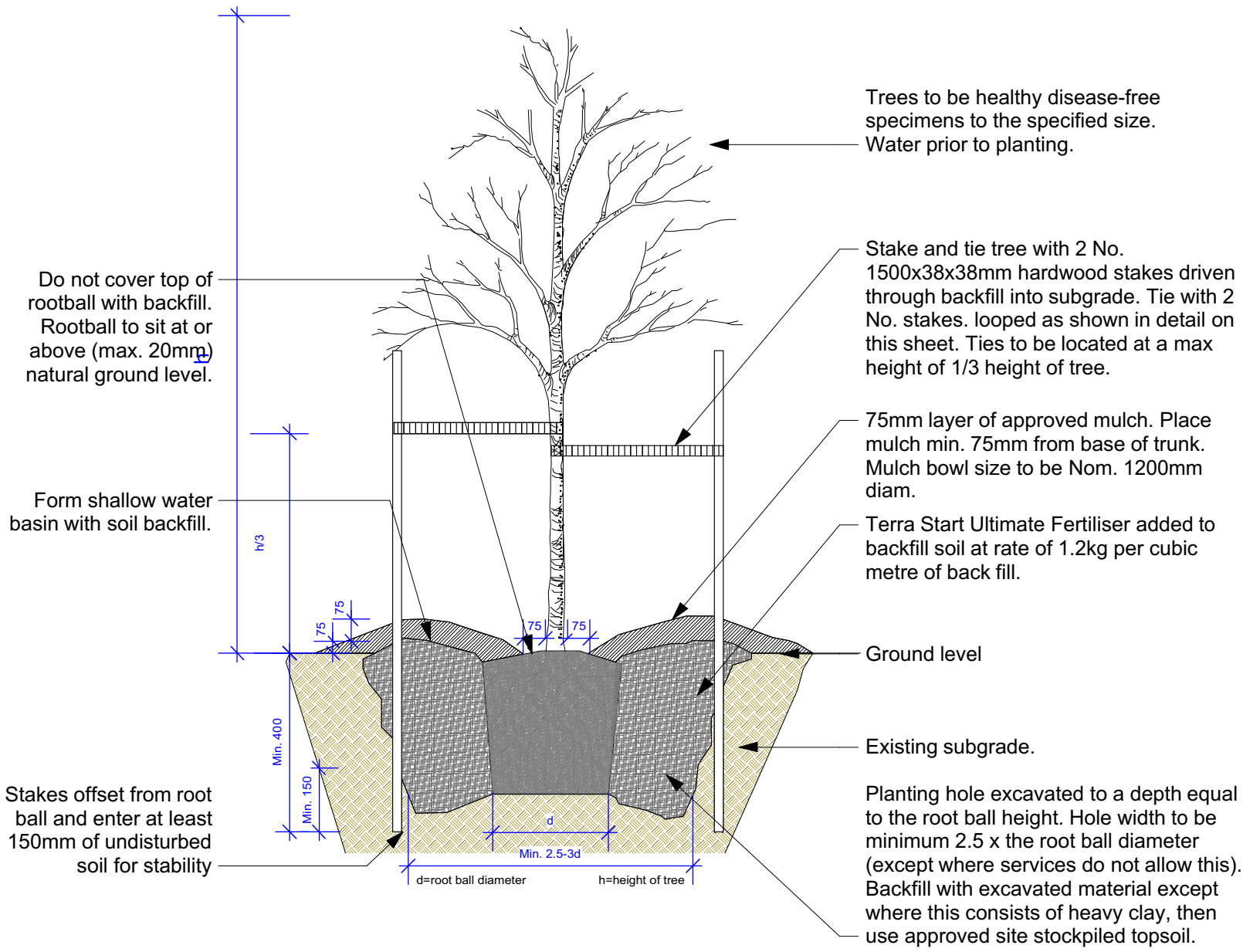
Planting Plan
1:100@A1 1:200@A3. Do not scale off plan



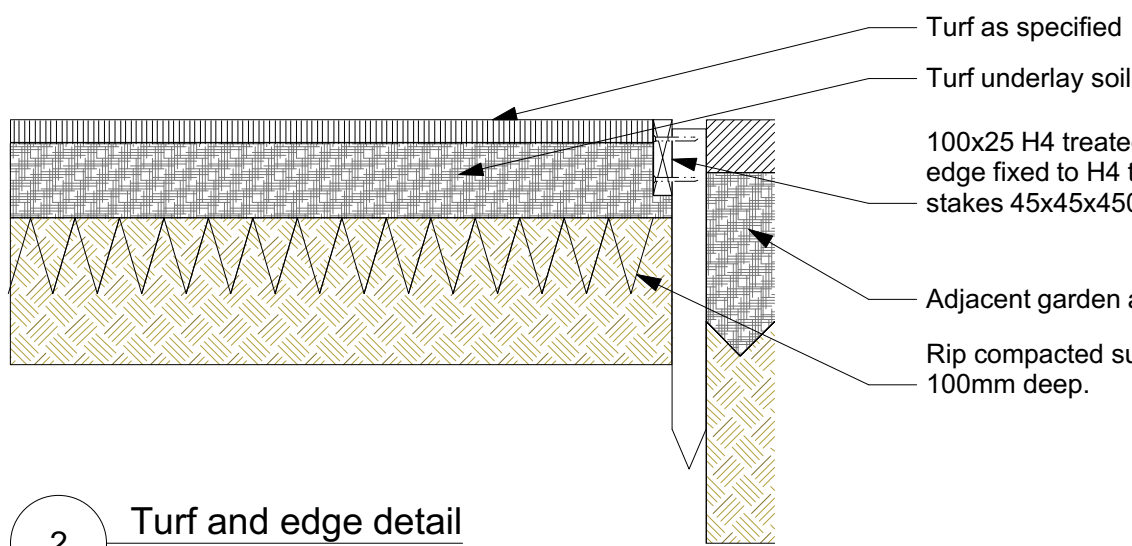
AREA CALCULATION		
	AREA (m2)	PERCENTAGE
Site	265	
Landscape total as per DCP	92,94	35,07%



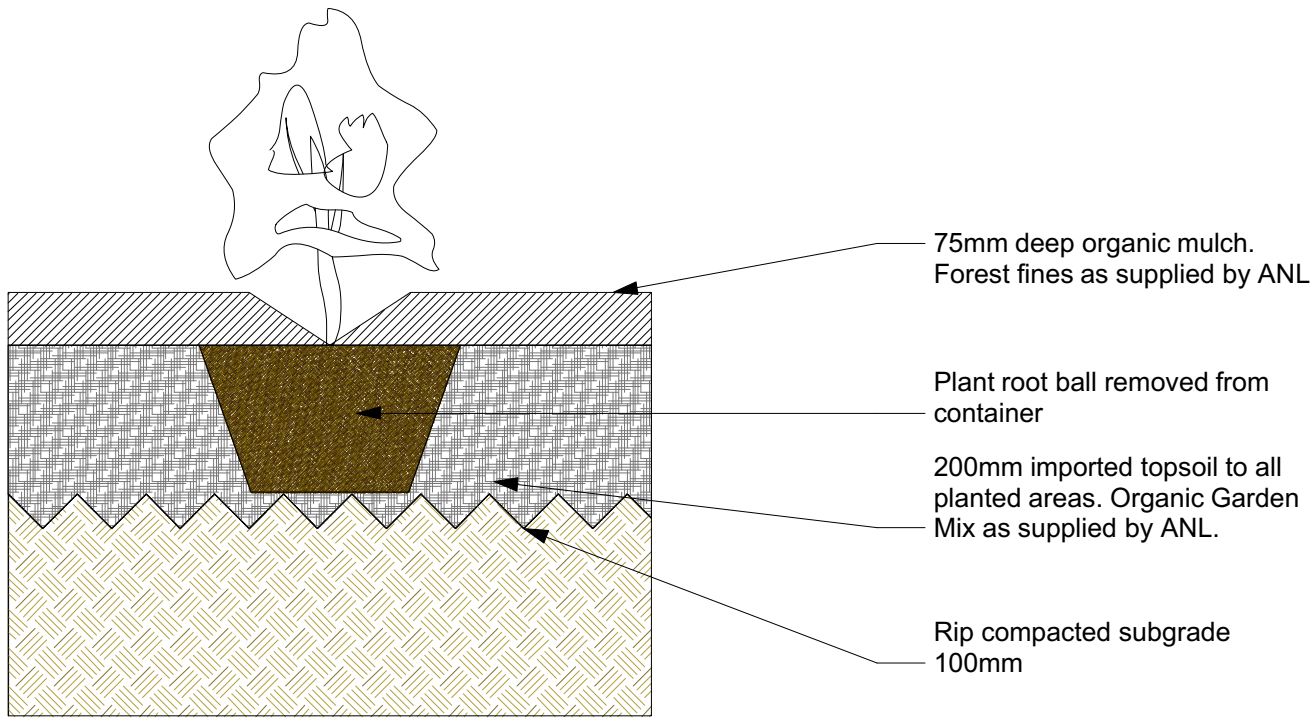
Sedimentation Control Fence
Not to scale.
Source: www.yourhome.gov.au



6 Tree planting
Scale: 1:20



2 Turf and edge detail
Scale: 1:10



7 Shrub planting
Scale: 1:10

Legend

- MULCH AREA
- TURF AREA
- TIMBER DECKING
- CONCRETE PAVING
- UNIT PAVING
- STAIRS
- PEBBLE
- GRAVEL
- COBBLESTONE
- TIMBER
- WATER
- MASONRY RETAINING WALL
- STONE RETAINING WALL
- TIMBER RETAINING WALL
- BOULDER RETAINING WALL
- SITE OR WORKS BOUNDARY
- PROPOSED LEVEL
- TOP OF WALL LEVEL
- MATERIAL NAME
- SURFACE FALL DIRECTION
- SURFACE DRAINS
- SURVEY (50% GREY LINES)
- EXISTING TREE TO RETAIN
- EXISTING TREE TO REMOVE
- EXISTING ROCK OUTCROP



ELAEOCARPUS



LOMANDRA TANIKA



SYZYGium 'BACKYARD BLISS'

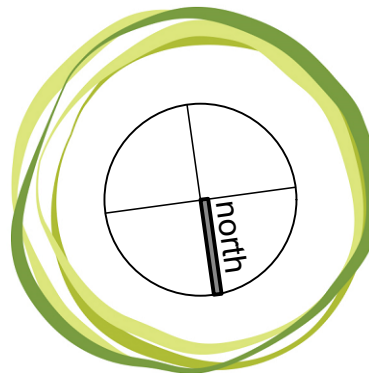


TRISTANIOPSIS



WESTRINGIA

ID	Quantity	Latin Name	Common Name	Scheduled Size	Mature Height	Mature Spread
E. reticulatus	1	Elaeocarpus reticulatus	Blueberry Ash	25lt	5 - 10m	3.5 - 6m
Loma tan	9	Lomandra longifolia 'Tanika'	Spiny-headed mat rush	150mm	0.45 - 0.6m	0.6 - 0.9m
Syz pan 'BB'	11	Syzygium paniculatum 'Backyard Bliss'	Lillypilly 'Backyard Bliss'	200mm	5 - 10m	6 - 10m
Tri Lau	1	Tristaniopsis laurina 'Luscious'	Kanooka, Water Gum	45lt	12 - 15m	3.5 - 6m
West fru	5	Westringia fruticosa	Coastal Rosemary	150mm	0.9 - 1.5m	0.9 - 1.2m



JAMIE KING
LANDSCAPE ARCHITECT
DESIGN • APPROVE • MANAGE

Notes:
>Do not scale off plan.
>Contractors to check all measurements onsite before quoting or commencing work.
>If abnormalities arise, contact the Landscape Architect.
>This design is copyright and is not to be reproduced in anyway without written consent of Jamie King Landscape Architect.

C	26/06/23	DRAFT issue for review.	PROJECT #	23052
B	23/02/23	DRAFT issue for review.	CLIENT	Fu Shun Realty PTY LTD
A	23/12/22	DRAFT issue for review.	DWG #	Sht-101
ISSUE	DATE	REVISION	SCALE @ A1	See Plan
PROJECT	Lot 6 Raven Circuit Warriewood		DRAWN	RAR
CLIENT	Fu Shun Realty PTY LTD		CHKD	JK
DWG	Master Landscape Plan		REVISION	

Jamie King Landscape Architect
22 Coonanga Road, Avalon, NSW, 2107
W: www.jamieking.com.au
T: 0421 517 991
E: jamie@jamieking.com.au



Legend

- MULCH AREA
- TURF AREA
- TIMBER DECKING
- CONCRETE PAVING
- UNIT PAVING
- STAIRS
- PEBBLE
- GRAVEL
- COBBLESTONE
- TIMBER
- WATER
- MASONRY RETAINING WALL
- STONE RETAINING WALL
- TIMBER RETAINING WALL
- BOULDER RETAINING WALL
- SITE OR WORKS BOUNDARY
- PROPOSED LEVEL
- TOP OF WALL LEVEL
- MATERIAL NAME
- SURFACE FALL DIRECTION
- SURFACE DRAINS
- SURVEY (50% GREY LINES)
- EXISTING TREE TO RETAIN
- EXISTING TREE TO REMOVE
- EXISTING ROCK OUTCROP

Notes:
>Do not scale off plan.
>Contractors to check all measurements onsite before quoting or commencing work.
>If abnormalities arise, contact the Landscape Architect.
>This design is copyright and is not to be reproduced in any way without written consent of Jamie King Landscape Architect.

C	26/06/23	DRAFT issue for review.	PROJECT #	23052
B	23/02/23	DRAFT issue for review.	DATE #	See above
A	23/12/22	DRAFT issue for review.	SCALE @ A1	See Plan
PROJECT	Lot 6 Raven Circuit Warriewood			DWG #
CLIENT	Fu Shun Realty PTY LTD			Sht-102
DWG	Landscape Detail Plan			CHKD
			JK	REVISION



JAMIE KING
LANDSCAPE ARCHITECT
DESIGN ● APPROVE ● MANAGE