

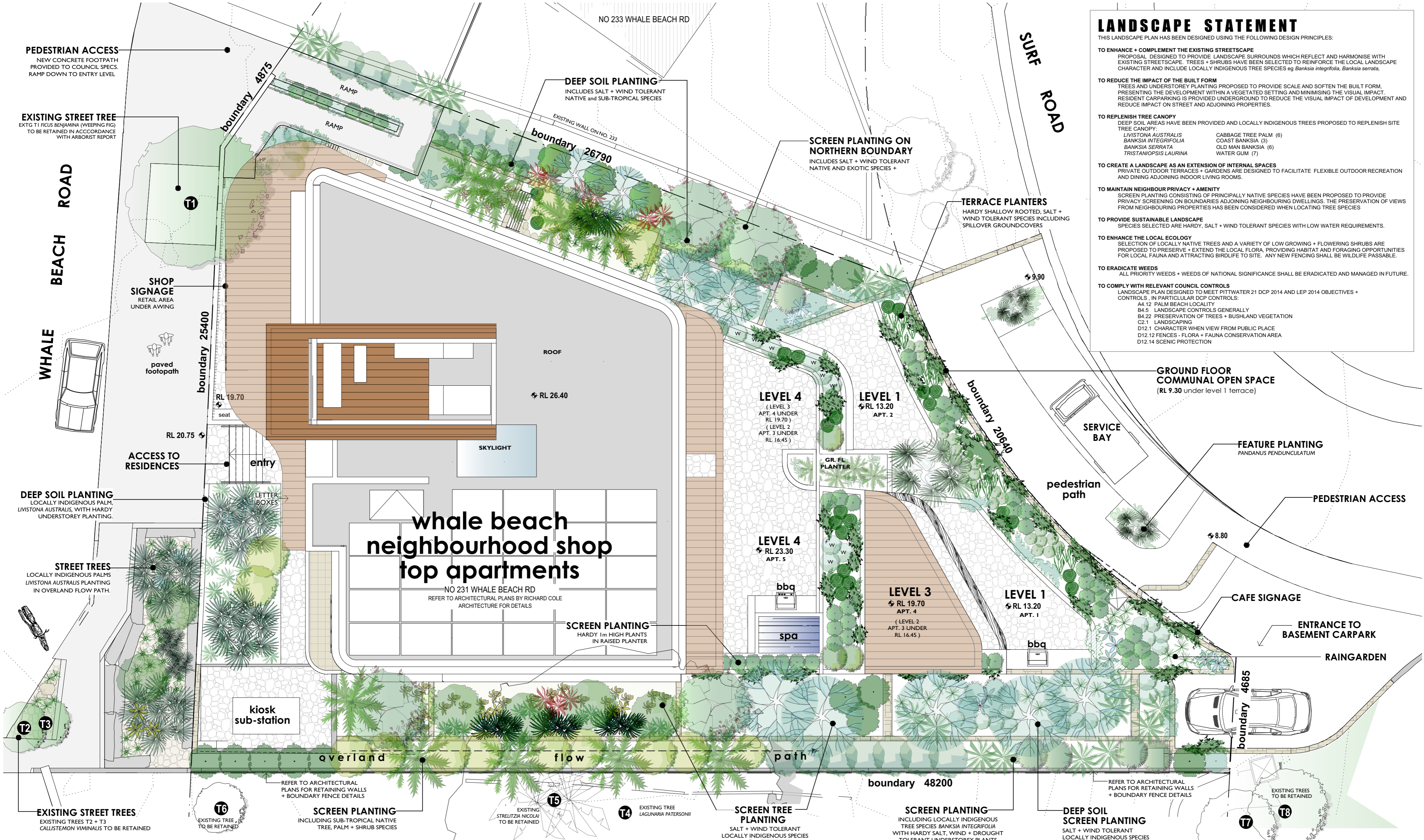
LANDSCAPE STATEMENT

THIS LANDSCAPE PLAN HAS BEEN DESIGNED USING THE FOLLOWING DESIGN PRINCIPLES:

- TO ENHANCE + COMPLEMENT THE EXISTING STREETScape**
PROPOSAL DESIGNED TO PROVIDE LANDSCAPE SURROUNDS WHICH REFLECT AND HARMONISE WITH EXISTING STREETScape. TREES + SHRUBS HAVE BEEN SELECTED TO REINFORCE THE LOCAL LANDSCAPE CHARACTER AND INCLUDE LOCALLY INDIGENOUS TREE SPECIES eg *Banksia integrifolia*, *Banksia serrata*.
- TO REDUCE THE IMPACT OF THE BUILT FORM**
TREES AND UNDERSTOREY PLANTING PROPOSED TO PROVIDE SCALE AND SOFTEN THE BUILT FORM. PRESENTING THE DEVELOPMENT WITHIN A VEGETATED SETTING AND MINIMISING THE VISUAL IMPACT. RESIDENT CARPARKING IS PROVIDED UNDERGROUND TO REDUCE THE VISUAL IMPACT OF DEVELOPMENT AND REDUCE IMPACT ON STREET AND ADJOINING PROPERTIES.
- TO REPLENISH TREE CANOPY**
DEEP SOIL AREAS HAVE BEEN PROVIDED AND LOCALLY INDIGENOUS TREES PROPOSED TO REPLENISH SITE TREE CANOPY:

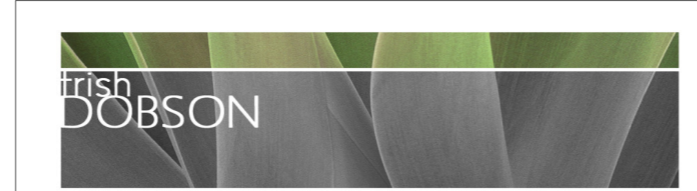
<i>LIVISTONA AUSTRALIS</i>	CABBAGE TREE PALM (6)
<i>BANKSIA INTEGRIFOLIA</i>	COAST BANKSIA (3)
<i>BANKSIA SERRATA</i>	OLD MAN BANKSIA (6)
<i>TRISTANIOPSIS LAURINA</i>	WATER GUM (7)
- TO CREATE A LANDSCAPE AS AN EXTENSION OF INTERNAL SPACES**
PRIVATE OUTDOOR TERRACES + GARDENS ARE DESIGNED TO FACILITATE FLEXIBLE OUTDOOR RECREATION AND DINING ADJOINING INDOOR LIVING ROOMS.
- TO MAINTAIN NEIGHBOUR PRIVACY + AMENITY**
SCREEN PLANTING CONSISTING OF PRINCIPALLY NATIVE SPECIES HAVE BEEN PROPOSED TO PROVIDE PRIVACY SCREENING ON BOUNDARIES ADJOINING NEIGHBOURING DWELLINGS. THE PRESERVATION OF VIEWS FROM NEIGHBOURING PROPERTIES HAS BEEN CONSIDERED WHEN LOCATING TREE SPECIES
- TO PROVIDE SUSTAINABLE LANDSCAPE**
SPECIES SELECTED ARE HARDY, SALT + WIND TOLERANT SPECIES WITH LOW WATER REQUIREMENTS.
- TO ENHANCE THE LOCAL ECOLOGY**
SELECTION OF LOCALLY NATIVE TREES AND A VARIETY OF LOW GROWING + FLOWERING SHRUBS ARE PROPOSED TO PRESERVE + EXTEND THE LOCAL FLORA, PROVIDING HABITAT AND FORAGING OPPORTUNITIES FOR LOCAL FAUNA AND ATTRACTING BIRDLIFE TO SITE. ANY NEW FENCING SHALL BE WILDLIFE PASSABLE.
- TO ERADICATE WEEDS**
ALL PRIORITY WEEDS + WEEDS OF NATIONAL SIGNIFICANCE SHALL BE ERADICATED AND MANAGED IN FUTURE.
- TO COMPLY WITH RELEVANT COUNCIL CONTROLS**
LANDSCAPE PLAN DESIGNED TO MEET PITTWATER 21 DCP 2014 AND LEP 2014 OBJECTIVES + CONTROLS, IN PARTICULAR DCP CONTROLS:

A4.12 PALM BEACH LOCALITY
B4.5 LANDSCAPE CONTROLS GENERALLY
B4.22 PRESERVATION OF TREES + BUSHLAND VEGETATION
C2.1 LANDSCAPING
D12.1 CHARACTER WHEN VIEW FROM PUBLIC PLACE
D12.12 FENCES - FLORA + FAUNA CONSERVATION AREA
D12.14 SCENIC PROTECTION



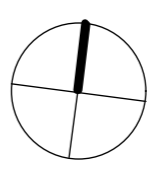
LEGEND

RL 11.97	PROPOSED LEVELS		TILED TERRACES + PATHS		MASONRY RETAINING WALLS		LAWN AREA 'SIR WALTER' BUFFALO		UNIT PAVERS OR TILES
21.24	EXISTING SPOT LEVELS		EXISTING TREES TO BE REMOVED		STONE PLANTERS		QUARRIED SANDSTONE 'SLABS' 500x500x1000mm +/-		CPR COPPER ROOFING
	BOUNDARY		EXISTING TREES TO BE RETAINED		CONCRETE DRIVEWAY / FOOTPATH		GLASS FLOOR (GF) AND GLASS SKYLIGHT (SK)		



trish dobson landscape architecture
 34A MARINE PARADE, AVALON NSW 2107
 0408 983020
 trish@trishdobson.com.au
 TRISH DOBSON
 REGISTERED LANDSCAPE ARCHITECT HORTICULTURIST ARBORIST
 ABN 57 241 486 158

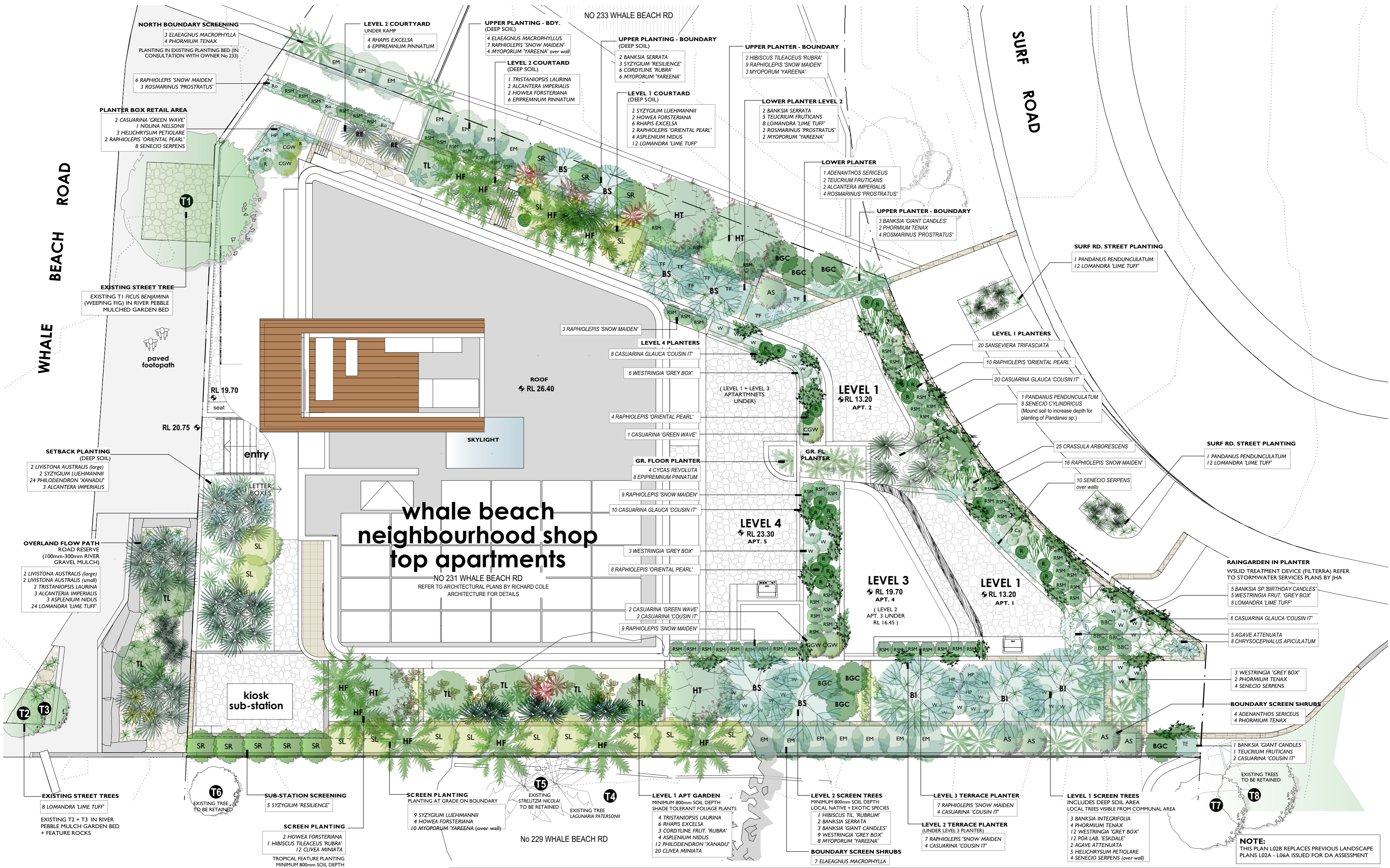
DEVELOPMENT APPLICATION
 NEIGHBOURHOOD SHOP TOP HOUSING
 for Leslie Cassar
 231 Whale Beach Rd Whale Beach NSW



0m 1m 2m 3m 4m 5m **1911 / DA-L01C** DWG

LANDSCAPE SITE PLAN
 1:100 @ A2 SCALE
 24.4.20 DATE
 1911 JOB
 9.8.21 ISSUE
 1 OF 5 SHEET
 DA Rev C Side Setbacks increased, Terraces revised, Planting revised. 9.8.21
 REFER TO ARCH PLAN D034 'LANDSCAPED AREAS' FOR DEEP SOIL / SITE COVERAGE COMPLIANCE DETAILS

NOTE
 REFER TO SHEET L07C FOR PLANTING SCHEDULE
 REFER TO SHEET L08C FOR TREE RETENTION / REMOVAL
 REFER TO ARCH PLAN D034 'LANDSCAPED AREAS' FOR DEEP SOIL / SITE COVERAGE COMPLIANCE DETAILS



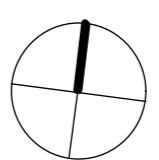
SITE PLANTING PLAN
SCALE 1:100
REFER TO SHEET L07C FOR PLANTING SCHEDULE

trish dobson landscape architecture
34A MARINE PARADE, AVALON NSW 2107
0408 983020
trish@trishdobson.com.au

TRISH DOBSON
REGISTERED LANDSCAPE ARCHITECT HORTICULTURIST ARBORIST
ABN 57 241 486 158

DEVELOPMENT APPLICATION
NEIGHBOURHOOD SHOP TOP HOUSING
for Leslie Cassar

231 Whale Beach Rd Whale Beach NSW



0m 1m 2m 3m 4m 5m

1:100 @ A2 SCALE
24.4.20 DATE
1911 JOB
9.8.21 ISSUE
2 OF 5 SHEET
DVG

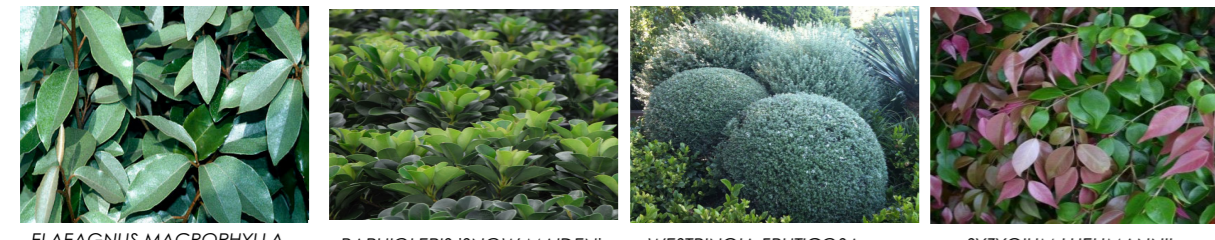
SITE PLANTING PLAN
1:100 @ A2 SCALE
24.4.20 DATE
1911 JOB
9.8.21 ISSUE
2 OF 5 SHEET
DVG

DA Rev C Side Setbacks increased, Terraces revised, Planting revised. 9.8.21

NOTE:
THIS PLAN L02B REPLACES PREVIOUS LANDSCAPE PLANS L02A - L06A ISSUED FOR DA ASSESSMENT



BANKSIA INTEGRIFOLIA Coast Banksia
LIVISTONA AUSTRALIS Cabbage Tree Palm
BANKSIA SERRATA Old Man Banksia
TRISTANIOPSIS LAURINA Water Gum



ELAEAGNUS MACROPHYLLA Russian Olive
RAPHIOLEPIS 'SNOW MAIDEN' Dwarf Hawthorn
WESTRINGIA FRUTICOSA + TEUCRIUM FRUTICANS
SYZYGIUM LUEHMANNII Small Leaf Lillypilly



CASUARINA 'GREEN WAVE' Dwarf Sheoke
HELICHRYSUM PETIOLARE Licorice Plant
BANKSIA 'BIRTHDAY CANDLES' Dwarf Hairpin Banksia
CRASSULA ARBORESCENS Blue Money Plant



RAPHIOLEPIS 'ORIENTAL PEARL' Dwarf Hawthorn
ADENANTHOS SERICEUS Coastal Woollybush
PHILODENDRON 'XANADU' Dwarf Philodendron
SYZYGIUM AUSTRALE 'RESILIENCE' Dwarf Lillypilly



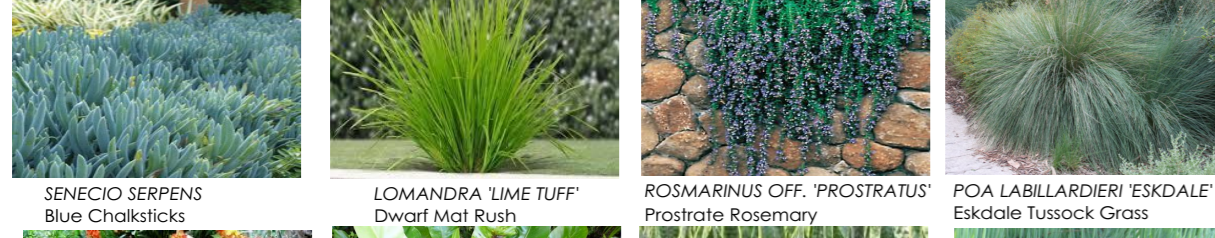
AGAVE ATTENUATA Century Plant
RHAPIS EXCELSA Lady Palm, Rhaps
HOWEA FORSTERIANA Kentia Palm
PANDANUS PENDUNCULATUM Screw Pine



NOLINA NELSONII Blue Nolina
HIBISCUS TILEACEUS 'RUBRA' Burgundy Cottonwood
PHORMIUM TENAX New Zealand Flax
CORDYLINERUBRA Burgundy Palm Lily



CASUARINA 'COUSIN IT' Prostrate Sheoke
CYCAS REVOLUTA Cycad, Sago Palm
EPIPREMNUM PINNATUM Native Monstera
MYOPORUM PARVIFOLIUM 'YAREENA' Creeping Boobiala



SENECIO SERPENS Blue Chalksticks
LOMANDRA 'LIME TUFF' Dwarf Mat Rush
ROSMARINUS OFF. 'PROSTRATUS' Prostrate Rosemary
POA LABILLARDIERI 'ESKDALE' Eskdale Tussock Grass



CLIVEA MINIATA Kafir Lily
ASPENIUM NIDUS Bird's Nest Fern
SANSEVIERIA TRIFASCIATA Snake Plants
SENECIO CYLINDRICUS Narrow Leaf Chalksticks

accents, palms, features, groundcovers + grasses
PROPOSED SPECIES SELECTION

PLANTING SCHEDULE

SPECIES HAVE BEEN SELECTED ON THE BASIS OF DESIGN INTENT AND SUITABILITY TO SITE CONDITIONS. PLAN INCLUDES TREE SPECIES SELECTED FROM NORTHERN BEACHES COUNCIL WEBSITE RECOMMENDED LIST. SHRUB AND FOLIAGE PLANTS HAVE BEEN SELECTED TO PROVIDE STIMULATING VARIETY OF SEASONAL COLOUR AND FLOWER AND INCLUDE HARDY SALT AND WIND TOLERANT SPECIES.

KEY	BOTANICAL NAME	COMMON NAME	MATURE HT.	No.	POT SIZE	COMMENTS
CANOPY TREES						
Bi	BANKSIA INTEGRIFOLIA	COAST BANKSIA	6m	3	75 litre	Local species
BS	BANKSIA SERRATA	OLD MAN BANKSIA	6m	6	75 litre	Local species
HT	HIBISCUS TILEACEUS 'RUBRA'	RED COTTONWOOD	6m	4	45 litre	
	LIVISTONA AUSTRALIS	CABBAGE TREE PALM	10m	4	100 litre	Local species
	LIVISTONA AUSTRALIS	CABBAGE TREE PALM	10m	2	300mm	Local species
TL	TRISTANIOPSIS LAURINA	WATER GUM	5m	7	75 litre	Local species
SHRUBS						
AS	ADENANTHOS SERICEUS	COASTAL WOOLYBUSH	2.5m	5	300mm	PRUNE TO MAINTAIN
BGC	BANKSIA ERIC. x SPIN. 'GIANT CANDLES'	DWARF HEATH BANKSIA	2m	7	300mm	
BBC	BANKSIA SPINULOSA 'BIRTHDAY CANDLES'	DWARF HAIRPIN BANKSIA	1m	5	200mm	
CGW	CASUARINA 'GREEN WAVE'	DWARF SHEOKE	1.5m	5	200mm	
	CRASSULA ARBORESCENS	BLUE MONEY PLANT	0.5m	25	200mm	PRUNE TO ROUND BALLS
EM	ELAEAGNUS MACROPHYLLA	RUSSIAN OLIVE	2.5m	14	300mm	PRUNE TO THICKEN
HP	HELICHRYSUM PETIOLARE	LICORICE PLANT	1m	8	200mm	PRUNE TO THICKEN
RS	RAPHIOLEPIS 'SNOW MAIDEN'	DWARF HAWTHORN	0.7m	67	200mm	PRUNE TO THICKEN
	RAPHIOLEPIS 'ORIENTAL PEARL'	DWARF HAWTHORN	0.5m	26	200mm	PRUNE TO SMALL BALLS
SAR	SYZYGIUM AUSTRALE 'RESILIENCE'	DWARF LILLYPILLY	2.5m	8	300mm	PRUNE TO THICKEN
SL	SYZYGIUM LUEHMANNII	SMALL LEAF LILLYPILLY	3m	13	300mm	PRUNE TO THICKEN
TF	TEUCRIUM FRUTICANS	MINT GERMANDER	1m	8	200mm	PRUNE TO KEEP COMPACT
W	WESTRINGIA FRUTICOSA 'GREY BOX'	COAST ROSEMARY	1m	38	200mm	PRUNE TO KEEP COMPACT
ACCENTS + PALMS						
	AGAVE ATTENUATA	CENTURY PLANT	0.5m	7	300mm	
	ALCANTERA IMPERIALIS	GIANT BROMELIAD	0.9m	10	200mm	
	ASPENIUM NIDUS	BIRD'S NEST FERN	0.6m	11	200mm	
	CORDYLINERUBRA	RED PALM LILY	1.2m	9	300mm	
	CYCAS REVOLUTA	CYCAD, SAGO PALM	1m	4	45 litre	
	HOWEA FORSTERIANA	KENTIA PALM	6m	10	75 litre	
	NOLINA NELSONII	BLUE NOLINA	1m	1	300mm	
	PANDANUS PENDUNCULATUM	SCREW PALM	3m	2	75 litre	Surf Rd Streetfront
	PANDANUS PENDUNCULATUM	SCREW PALM	3m	1	100litre	Level 1 planter feature
	PHORMIUM TENAX	NEW ZEALAND FLAX	1.2m	16	300mm	
	SANSEVIERIA TRIFASCIATA	SNAKE PLANT	0.6m	20	200mm	
	RHAPIS EXCELSA	RHAPIS PALM	2m	16	300mm	
GROUNDCOVERS						
	CASUARINA 'COUSIN IT'	PROSTRATE SHEOKE	g/cover	56	150mm	
	CHRYSOCEPHALLUS APICULATUM	YELLOW BUTTONS	g/cover	8	150mm	
	CLIVEA MINIATA	KAFIR LILY	0.6m	32	150mm	
	EPIPREMNUM PINNATUM	NATIVE MONSTERA	g/cover	20	150mm	
	LOMANDRA 'LIME TUFF'	DWARF MAT RUSH	0.5m	84	150mm	
	MYOPORUM PARVIFOLIUM 'YAREENA'	PROSTRATE BOOBIALA	g/cover	33	150mm	
	PHILODENDRON 'XANADU'	DWARF PHILODENDRON	0.7m	36	200mm	
	POA LABILLARDIERI 'ESKDALE'	ESKDALE TUSsock GRASS	0.6m	12	150mm	
	ROSMARINUS OFFICINALIS 'PROSTRATUS'	PROSTRATE ROSEMARY	g/cover	13	150mm	
	SECECIO SERPENS	BLUE CHALKSTICK	g/cover	26	150mm	
	SENECIO CYLINDRICUS	NARROW CHALKSTICKS	0.3m	8	150mm	

GENERAL SPECIFICATIONS

LANDSCAPE HARDWORKS
ALL DEMOLITION AND SITE CONSTRUCTION SHALL BE EXECUTED IN ACCORDANCE WITH DA CONSENT CONDITIONS AND ARCHITECTURAL + ENGINEERING SPECIFICATIONS BY FULLY QUALIFIED CONTRACTORS.

LANDSCAPE WORKS SHALL GENERALLY BE UNDERTAKEN IN ACCORDANCE WITH COUNCIL APPROVED PLANS AND SHALL BE COMPLIANT WITH:
AS4970-2009 Protection of trees on development sites
AS 4970-2009/Am1-2010 Protection of trees on development sites
AS4373-2007 Pruning of amenity trees
AS4419-2003 Soils for landscaping and garden use
AS4454-2012 Composts, soil conditioners and mulches
AS3743-2003 Potting mixes

ALL LANDSCAPE WORKS SHALL BE EXECUTED BY A COMPETENT LANDSCAPE CONTRACTOR EXPERIENCED IN HORTICULTURAL PRACTICE AND LANDSCAPE CONSTRUCTION. THE CONTRACTOR SHALL HOLD A CURRENT NSW STRUCTURAL LANDSCAPE LICENSE. IRRIGATION WORKS SHALL BE EXECUTED BY A CONTRACTOR SUITABLY QUALIFIED AND LICENSED BY NSW DEPARTMENT OF FAIR TRADING FOR URBAN IRRIGATION.

TREE PROTECTION
TREE PROTECTION SHALL BE INSTALLED PRIOR TO COMMENCEMENT OF WORKS AROUND EXISTING TREES TO BE RETAINED IN ACCORDANCE WITH ARBORICULTURAL IMPACT ASSESSMENT. REPORT BY URBAN FORESTRY AUSTRALIA (JULY 2021), CONSENT CONDITIONS AND STANDARD INDUSTRY PRACTICES. CARE SHALL BE TAKEN AT ALL TIMES TO PROTECT EXISTING TREE ROOTS + CANOPY.

SOIL PREPARATION + PLANTING SOILS
PLANTING BEDS SHALL BE PREPARED GENERALLY IN ACCORDANCE WITH DETAILS. THE FOLLOWING SPECIFICATIONS APPLY GENERALLY TO DISTURBED AREAS OF THE SITE WHERE EXCAVATION FOR CONSTRUCTION REQUIRES REINSTATEMENT OF LEVELS USING IMPORTED SOILS:

STANDARD TOPSOIL:
SANDY LOAM TO CLAY LOAM MIX DESIGNED FOR GENERAL PURPOSE ON-GRADE GARDEN BED PLANTING WITH A HIGH NUTRIENT REQUIREMENT FOR SUSTAINED OPTIMUM GROWTH. USE 'LOW P' OPTIONS FOR NATIVE PLANTS
EXAMPLE COMPONENTS: SANDY LOAM SOIL 70-90% BY VOLUME
COMPOSTED SOIL CONDITIONER 10-30% FOR NATIVES
COMPOSTED SOIL CONDITIONER 30-60% FOR EXOTIC SPECIES

STANDARD SUBSOIL:
LOAM TO SANDY LOAM, WELL DRAINED MEDIUM WITH LOW ORGANIC MATTER FOR BACKFILLING AT DEPTH. WELL BALANCED CHEMICALLY, NOT SALINE OR SODIC OR EXCESSIVELY ACIDIC OR CALCIUM DEFICIENT AND NOT DISPERSIVE. USE LOW 'P' OPTION
THE MIX MAY USE A SMALL PROPORTION OF SITE TOPSOIL OR SUBSOIL, PROVIDED THE ORGANIC MATTER UPPER LIMIT IS NOT EXCEEDED.
EXAMPLE COMPONENTS: SANDY LOAM SOIL 60-80% BY VOLUME
CLAY LOAM 20-30% BY VOLUME
COMPOSTED SOIL CONDITIONER <10% BY VOLUME

ON-SLAB TOPSOIL INCLUDING PLANTER BOXES
OPEN GRANULAR WELL-DRAINED GROWING MEDIA WITH SATURATED DENSITY OF LESS THAN 2400 KG/M³ FOR USE IN THE TOP 300mm OF ALL ON-SLAB INSTALLATIONS. GENERALLY, SOIL SHALL BE FREE OF 'UNWANTED MATERIAL' WITH PHYSICAL PROPERTIES OF POTTING MIX ASSESSED BY AS 3743
EXAMPLE COMPONENTS: SANDY LOAM SOIL OR SITE TOPSOIL 20-40% BY VOLUME
HORTICULTURAL ASH, PERLITE, OR SIMILAR LOW-DENSITY MINERAL MATTER 30-60% BY VOLUME
COMPOSTED SOIL CONDITIONER 20-30% BY VOLUME

ON-SLAB SUBSOIL INCLUDING PLANTER BOXES
OPEN GRANULAR WELL-DRAINED GROWING MEDIA WITH ALL-UP SATURATED DENSITY OF LESS THAN 2400 G/M³ FOR USE AT DEPTH IN ALL ON-SLAB INSTALLATIONS. GENERALLY THE SOIL MUST BE FREE OF 'UNWANTED MATERIAL' AND MUST COMPLY WITH AS 3743.
EXAMPLE COMPONENTS: SANDY LOAM SOIL OR SITE TOPSOIL 10-30% BY VOLUME
HORTICULTURAL ASH, PERLITE, OR SIMILAR LOW-DENSITY MINERAL MATTER 30-50% BY VOLUME
COMPOSTED 10mm PINE BARK 20-40% BY VOLUME
COMPOSTED SOIL CONDITIONER <20% BY VOLUME

IMPROVED SITE SOILS
FOR PLANTING BEDS WHERE EXISTING SITE SOIL HAS BEEN RETAINED AT OR NEAR FINISHED LEVELS IMPROVED SITE SOIL SHALL BE USED FOR PLANTING. SITE SOIL TO A DEPTH OF 300mm SHALL BE AMENDED USING 10% 'GREENLIFE MULCH' CULTIVATED INTO SITE SOIL

GENERAL NOTES:
DO NOT INTRODUCE ORGANIC MATTER LOWER THAN 400mm. BACKFILL AT DEPTH WITH SUBSOIL ONLY. CONTRACTOR SHALL UNDERTAKE pH TESTS AND ADJUST WHERE NECESSARY TO ACHIEVE A pH WITHIN THE 5.5 - 7.5 RANGE. MIX IN GYPSSUM AT MANUFACTURER'S RECOMMENDED RATES IF CLAY SOIL ENCOUNTERED.

PLANTING
ALL PLANTS SHALL BE WELL GROWN AND DISEASE FREE. PLANTING SHALL BE IN ACCORDANCE WITH PLANTING SCHEDULE. TREES SHALL BE GROWN TO NATSPEC.

GENERAL PLANT MATERIAL (EXOTICS AND ENDEMIC)
SUPPLY PLANTS IN ACCORDANCE WITH PLANTING SCHEDULE. NO SUBSTITUTIONS ARE PERMITTED WITHOUT THE CONSENT OF THE SUPERVISING LANDSCAPE ARCHITECT. TREES SHALL BE GROWN TO NATSPEC OR AS2303-2018 AND SHALL BE VIGOROUS, WELL ESTABLISHED, FREE OF DISEASE AND PESTS, HARDENED OFF, TRUE TO FORM AND GROWN IN THEIR FINAL CONTAINERS FOR NOT LESS THAN 12 WEEKS. TREES SHALL HAVE A SINGLE LEADING SHOOT AND POTS FREE FROM WEEDS. ENSURE ANY STAKING OR GUYING REQUIRED IS REMOVED WITHIN 12 MONTHS.

FERTILIZER
AT PLANTING SPREAD SLOW RELEASE FERTILIZER AROUND DRIP LINE OF ALL PLANTS AT MANUFACTURER'S RECOMMENDED RATES
GENERAL APPLICATION:
EQUAL TO OSMOCOTE PLUS TRACE ELEMENTS - ALL PURPOSE NPK 19.4 : 1.6 : 6
NATIVE PLANTS:
EQUAL TO OSMOCOTE PLUS TRACE ELEMENTS - NATIVE GARDENS NPK 17.9 : 0.8 : 7.3

MULCH
EXCEPT WHERE INDICATED TO USE PEBBLE MULCH, COVER PLANTING AREAS OF SITE WITH 75mm 'FOREST FINES' MULCH ENSURE ALL MULCH IS FREE OF WEED SEED AND VEGETATIVE MATERIAL. KEEP CLEAR FROM PLANT STEM COLLARS.

VEGETATION LEGEND

TREES + PALMS
EXISTING TREES TO BE RETAINED AND PROTECTED

SMALL LOCALLY INDIGENOUS TREES to 7m
BANKSIA INTEGRIFOLIA (Coast Banksia)
BANKSIA SERRATA (Old Man Banksia)
TRISTANIOPSIS LAURINA (Water Gum)

LOCALLY INDIGENOUS PALM to 10m
LIVISTONA AUSTRALIS (Cabbage Tree Palm)

PALMS + FEATURES
HOWEA FORSTERIANA (Kentia Palm)
PANDANUS PENDUNCULATUM (Screw Pine)
RHAPIS EXCELSA (Rhaps Palm)
HIBISCUS TILEACEUS 'RUBRA' (Red Cottonwood)

SHRUBS
TALL SCREEN SHRUBS to 3m
ADENANTHOS SERICEUS (Coastal Woollybush)
BANKSIA 'GIANT CANDLES' (Giant Candles)
ELAEAGNUS MACROPHYLLA (Russian Olive)
SYZYGIUM LUEHMANNII (Small Leaf Lillypilly)
SYZYGIUM AUSTRALE 'RESILIENCE' (Dwarf Lillypilly)
SMALL SHRUBS to 1-2m
CASUARINA 'GREEN WAVE' (Dwarf She-ock)
CRASSULA ARBORESCENS (Blue Money Plant)
HELICHRYSUM PETIOLARE (Licorice Plant)
BANKSIA 'Birthday Candles' (Dwarf Banksia)
RAPHIOLEPIS 'Oriental Pearl' (Dwarf Hawthorn)
RAPHIOLEPIS 'Snow Maiden' (Dwarf Hawthorn)
WESTRINGIA FRUTICOSA 'Grey Box' (Coast Rosemary)

ACCENTS + GROUNDCOVERS
ACCENT PLANTS
ALCANTERA IMPERIALIS (Giant Bromeliad)
AGAVE ATTENUATA (Century Plant)
ASPENIUM NIDUS (Bird's Nest Fern)
CORDYLINERUBRA 'Rubra' (Red Palm Lily)
NOLINA NELSONII (Blue Nolina)
PHORMIUM TENAX (New Zealand Flax)
SANSEVIERIA TRIFASCIATA (Snake Plant)

GRASSES + GROUNDCOVERS
CASUARINA 'Cousin It' (Prostrate Sheoke)
EPIPREMNUM PINNATUM (Native Monstera)
LOMANDRA 'Lime Tuff' (Dwarf Mat Rush)
MYOPORUM PARVIFOLIUM 'Yareena' (Creeping Boobiala)
ROSMARINUS OFFICINALIS 'Prostratus' (Prostrate Rosemary)
PHILODENDRON 'Xanadu' (Dwarf Philodendron)
POA LABILLARDIERI 'Eskdale' (Tussock Grass)
SENECIO SERPENS (Blue Chalksticks)
SENECIO CYLINDRICUS (Narrow Leaf Chalksticks)

STREET TREES
STREET TREES SHALL BE PLANTED WITHIN A PEBBLE MULCHED PLANTING BED, PROVIDING A MINIMUM OF 10m³ OF SOIL VOLUME IN ACCORDANCE WITH DETAIL 03 (SHEET 8)

PUBLIC DOMAIN
STREET TREE PLANTING, PLANTING BED PREPARATION, PAVED SURFACES ETC WITHIN PUBLIC DOMAIN SHALL BE UNDERTAKEN IN ACCORDANCE WITH NORTHERN BEACHES COUNCIL SPECIFICATIONS + CONSENT CONDITIONS.

WEED ERADICATION
ALL WEED SPECIES SHALL BE REMOVED FROM SITE IN ACCORDANCE WITH BIOSECURITY ACT 2015. NO WEED SPECIES SHALL BE PLANTED ON SITE.

FENCES
NO NEW BOUNDARY FENCES ARE PROPOSED TO NORTHERN BOUNDARY. WHERE REQUIRED FOR PRIVACY OR SAFETY, FENCING SHALL BE PROVIDED TO SOUTHERN BOUNDARY IN CONSULTATION WITH ADJOINING PROPERTY OWNERS. WHERE REQUIRED, SIDE BOUNDARY FENCES SHALL BE 1800mm HIGH LAPPED + CAPPED PALING.

STONE WALLS
STONE WALL SHALL BE INSTALLED IN ACCORDANCE WITH ARCHITECTURAL / ENGINEERING PLANS.

OVERLAND FLOW PATH
OVERLAND FLOW PATH SHALL BE PROVIDED FROM WHALE BEACH ROAD ALONG SOUTHERN BOUNDARY TO SURF ROAD IN ACCORDANCE WITH STORMWATER ENGINEER'S SPECIFICATIONS.

RAINGARDEN
RAINGARDEN SHALL BE INSTALLED ON LEVEL 1 PLANTER WITH SOIL SPECIFICATIONS COMPLYING WITH DETAILS BY JHA STORMWATER SERVICES PLAN + DETAILS.

IRRIGATION
A WATER BOARD APPROVED, FULLY AUTOMATIC DRIP IRRIGATION SYSTEM SHALL BE INSTALLED TO ALL PLANTING BEDS + PLANTER BOXES. WATER SOURCE SHALL BE SUPPLIED BY BUILDER.

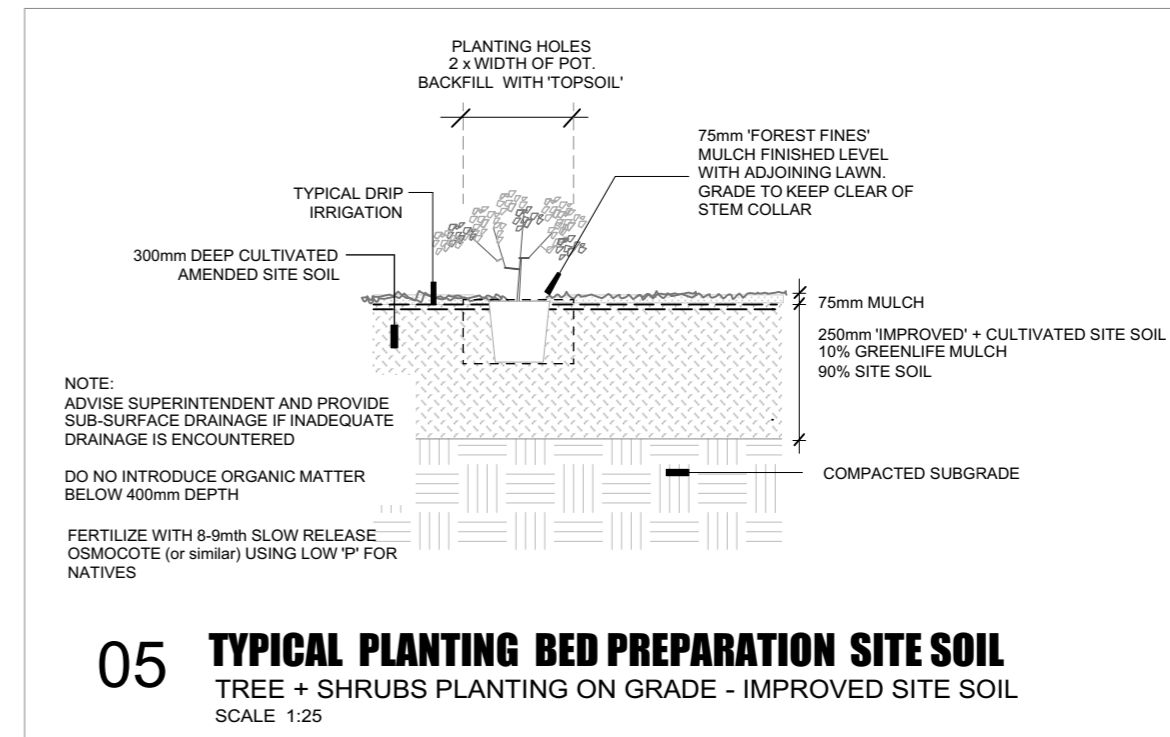
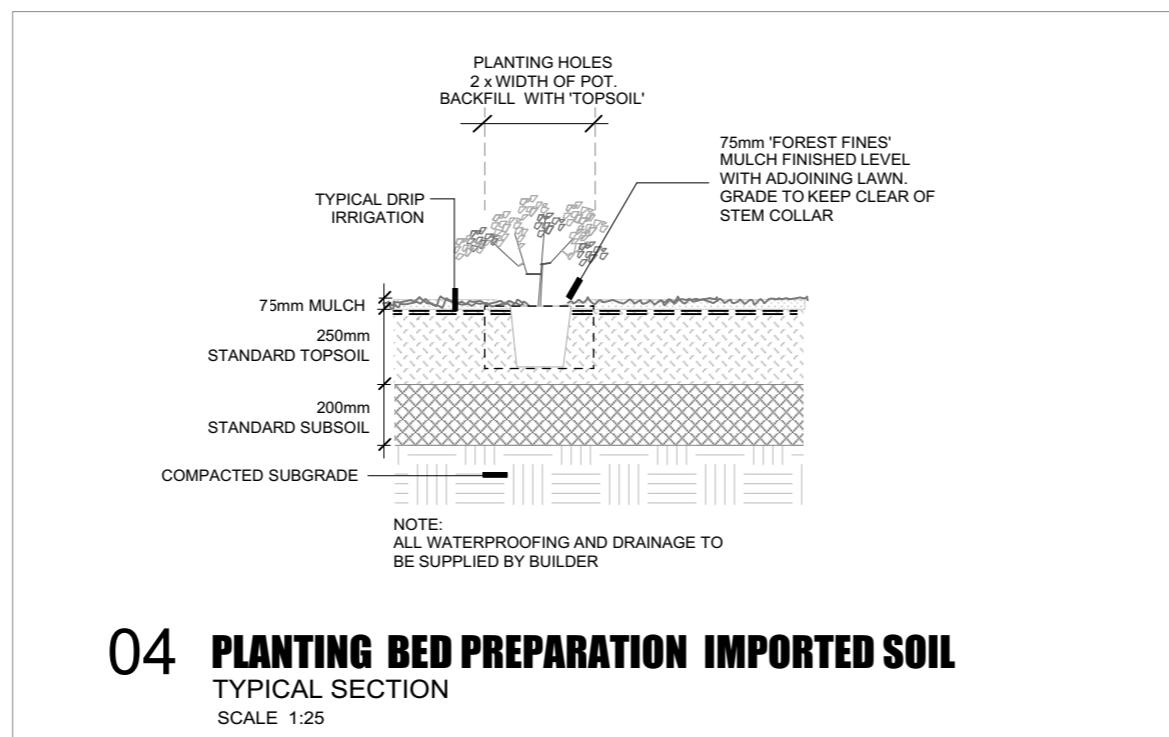
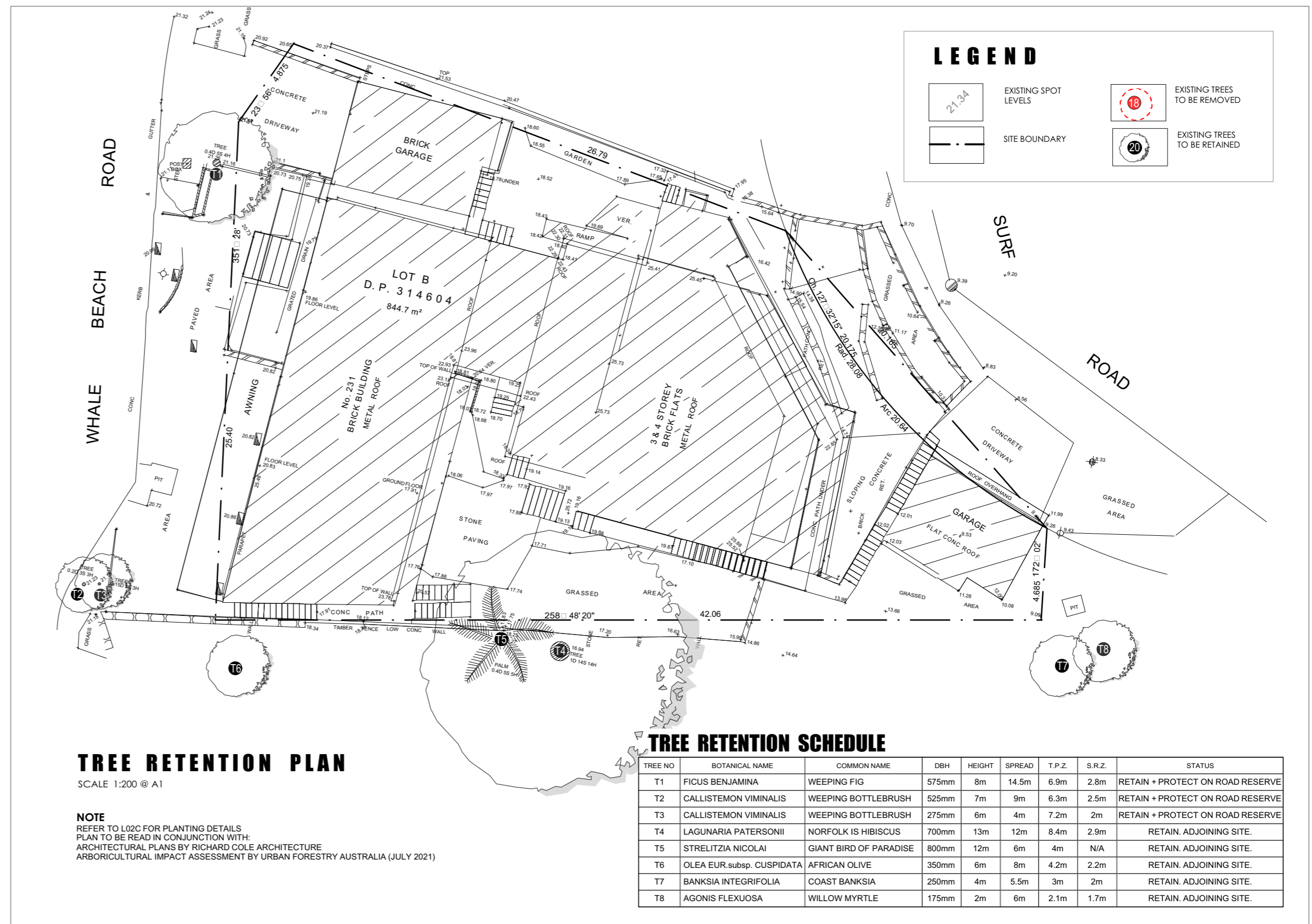
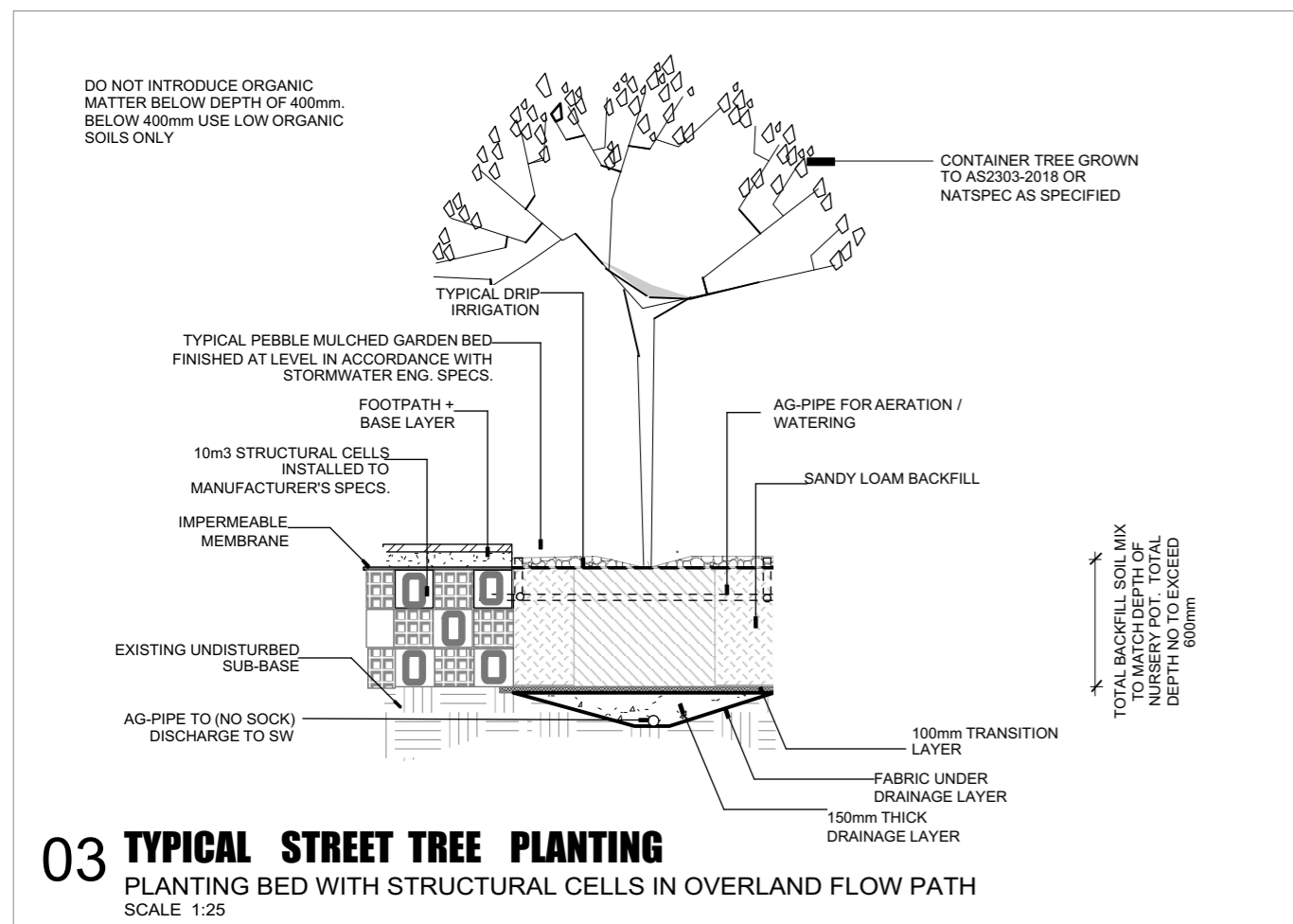
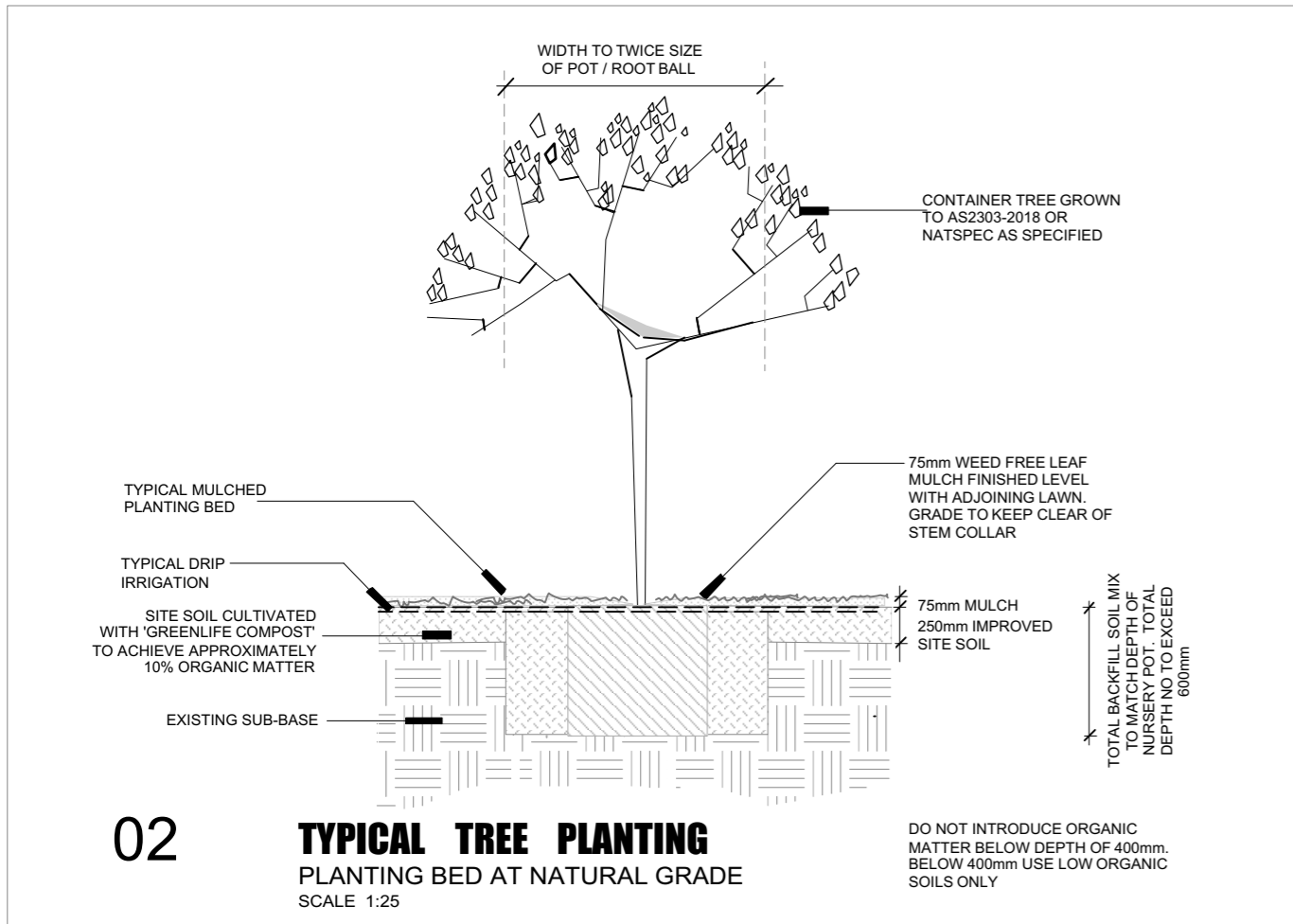
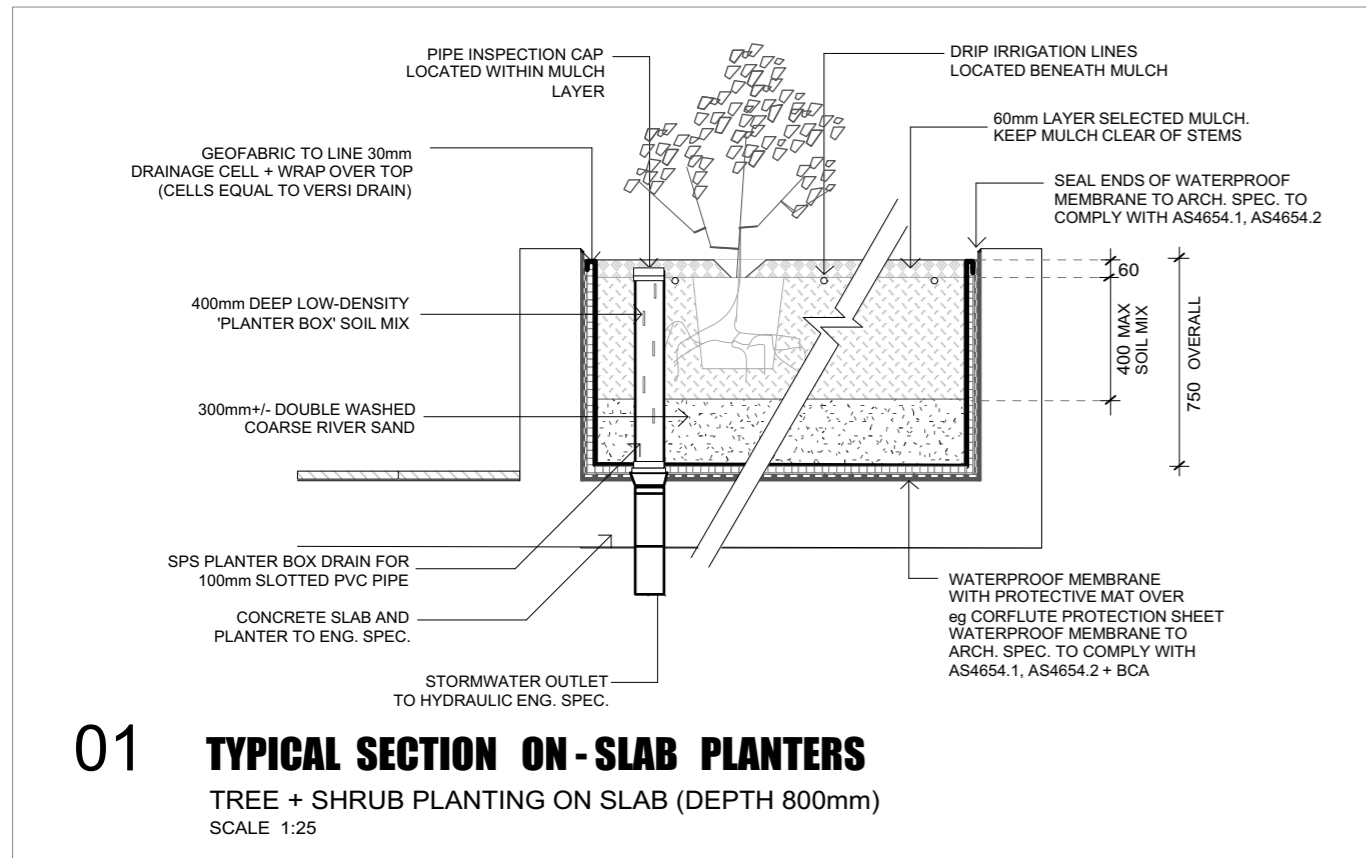
SYSTEM SHALL INCLUDE ALL FILTERS, BENDS, JUNCTION, ENDS AND OTHER ANCILLARY EQUIPMENT. A WIRELESS RAIN SENSOR, AUTOMATIC SHUT DOWN DEVICE, BACK FLOW PREVENTION AND A MANUAL OVERRIDE PROGRAMME SHALL BE PROVIDED. WORKS SHALL BE CARRIED OUT UNDER THE SUPERVISION OF PERSONS SUITABLY QUALIFIED AND LICENSED FOR URBAN IRRIGATION. CONTRACTOR SHALL OBTAIN ALL NECESSARY APPROVALS TO SYDNEY WATER REQUIREMENTS AND PROVIDE A 12 MONTH WARRANTY. AFTER INSTALLATION, SYSTEM SHALL BE TESTED AND ADJUSTED AND ACCEPTANCE SHALL BE SUBJECT TO SATISFACTORY TESTING. CONTRACTOR SHALL HANDOVER THE SYSTEM WITH CLEAR INSTRUCTIONS AS TO ITS OPERATION.

MAINTENANCE
THE CONTRACTOR SHALL MAINTAIN THE LANDSCAPE WORKS, INCLUDING REPLACEMENT OF DEAD OR DAMAGED PLANT MATERIAL, WEED AND PEST CONTROL, PEST CONTROL, FERTILIZING, AND WATERING UNTIL HANDOVER OF THE WORKS.

trish dobson landscape architecture
34A MARINE PARADE, AVALON NSW 2107
0408 983020
trish@trishdobson.com.au
TRISH DOBSON
REGISTERED LANDSCAPE ARCHITECT #450, HORTICULTURIST
A/N 57 241 486 158

DEVELOPMENT APPLICATION
NEIGHBOURHOOD SHOP TOP HOUSING
for Leslie Cassar
231 Whale Beach Rd Whale Beach NSW

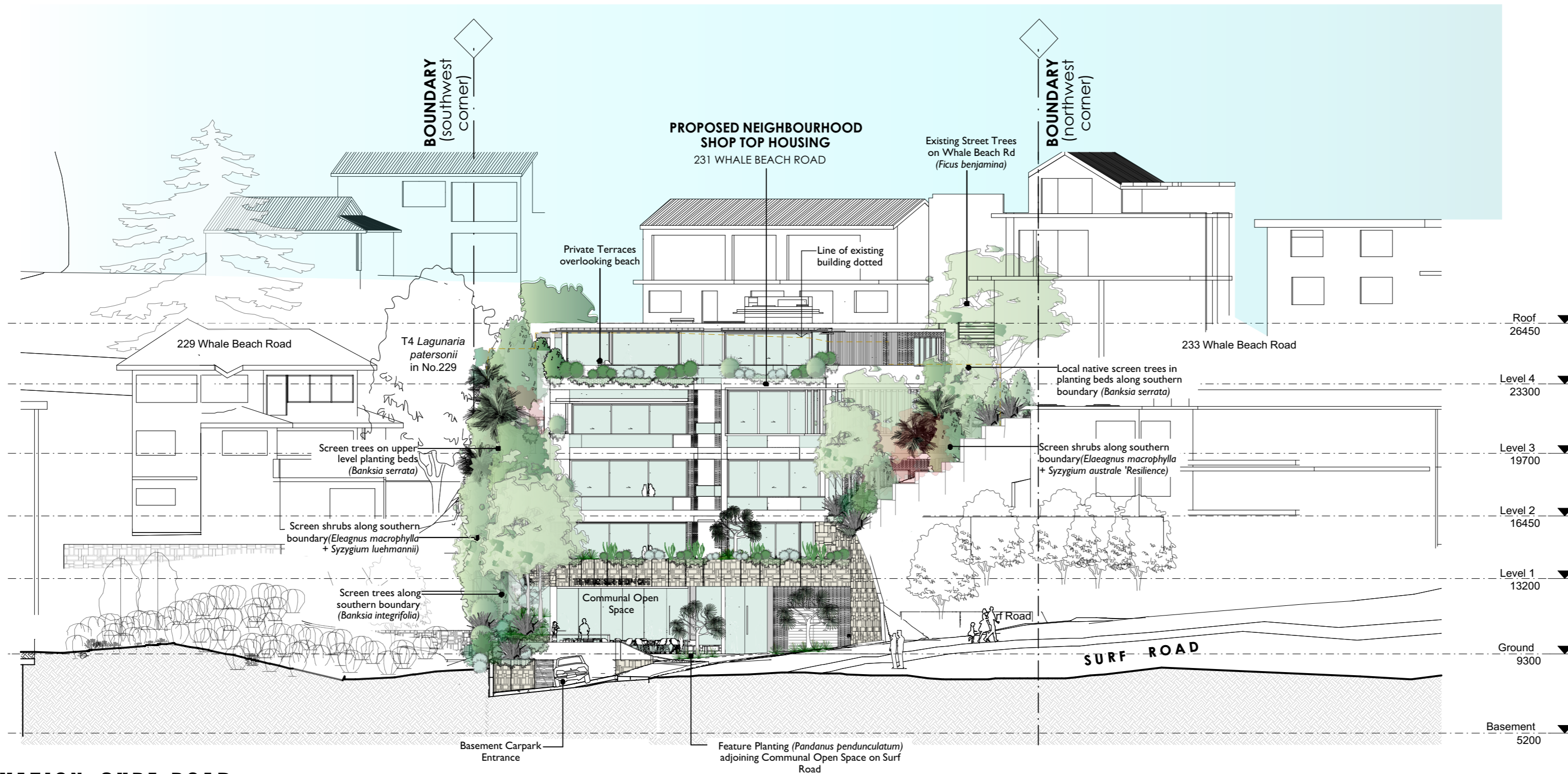
PLANTING SCHEDULE
N.T.S. @ A2 SCALE
24.4.20 DATE
1911 JOB
DA Rev C Planting Schedule Amended 9.8.21 ISSUE
3 OF 5 SHEET
1911 / DA-L07C DWG



Irish DOBSON trish dobson landscape architecture
34A MARINE PARADE, AVALON NSW 2107
0408 983020
trish@trishdobson.com.au
TRISH DOBSON
REGISTERED LANDSCAPE ARCHITECT #450 HORTICULTURIST
ABN 57 241 486 158

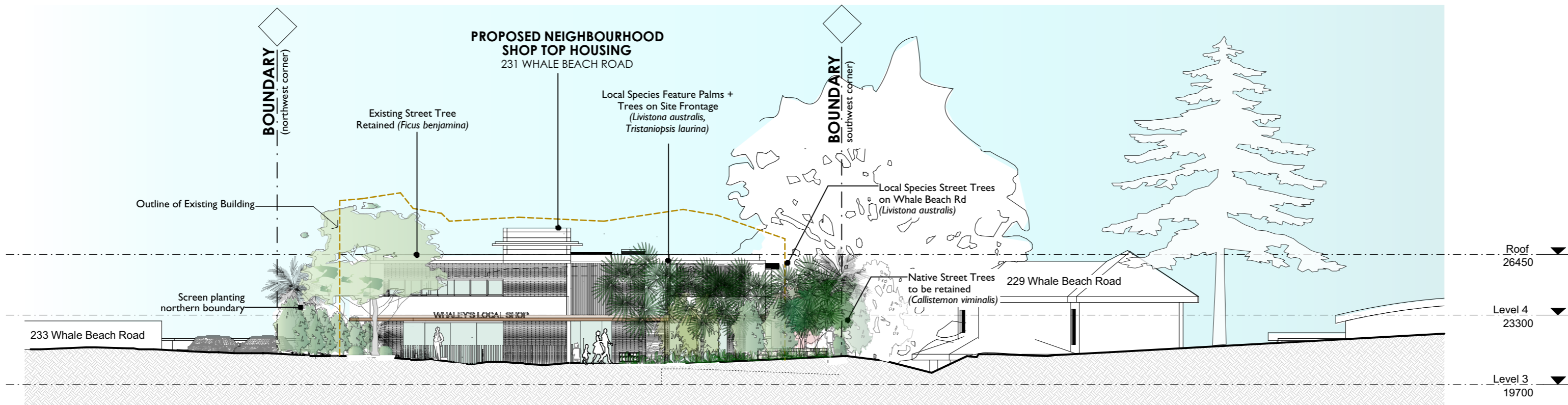
DEVELOPMENT APPLICATION
NEIGHBOURHOOD SHOP TOP HOUSING
for Leslie Cassar
231 Whale Beach Rd Whale Beach NSW

TREE RETENTION PLAN + DETAILS
1:200 @ A2 SCALE
24.4.20 DATE
1911 JOB
DA Rev C Sheet No. Amended 9.8.21 ISSUE
4 OF 5 SHEET
1911 / DA-L08C DWG



EASTERN ELEVATION SURF ROAD

SCALE 1:200 @ A2



WESTERN ELEVATION WHALE BEACH ROAD

SCALE 1:200 @ A2

	trish dobson landscape architecture 34A MARINE PARADE, AVALON NSW 2107 0408 983020 trish@trishdobson.com.au	DEVELOPMENT APPLICATION NEIGHBOURHOOD SHOP TOP HOUSING for Leslie Cassar 231 Whale Beach Rd Whale Beach NSW	STREET ELEVATIONS 1:200 @ A2 SCALE 24.4.20 DATE 1911 JOB 9.8.21 ISSUE 5 OF 5 SHEET DA Rev C Architectural Amendments. Side Setback increased
	TRISH DOBSON REGISTERED LANDSCAPE ARCHITECT #450 HORTICULTURIST ABN 57 241 486 158		