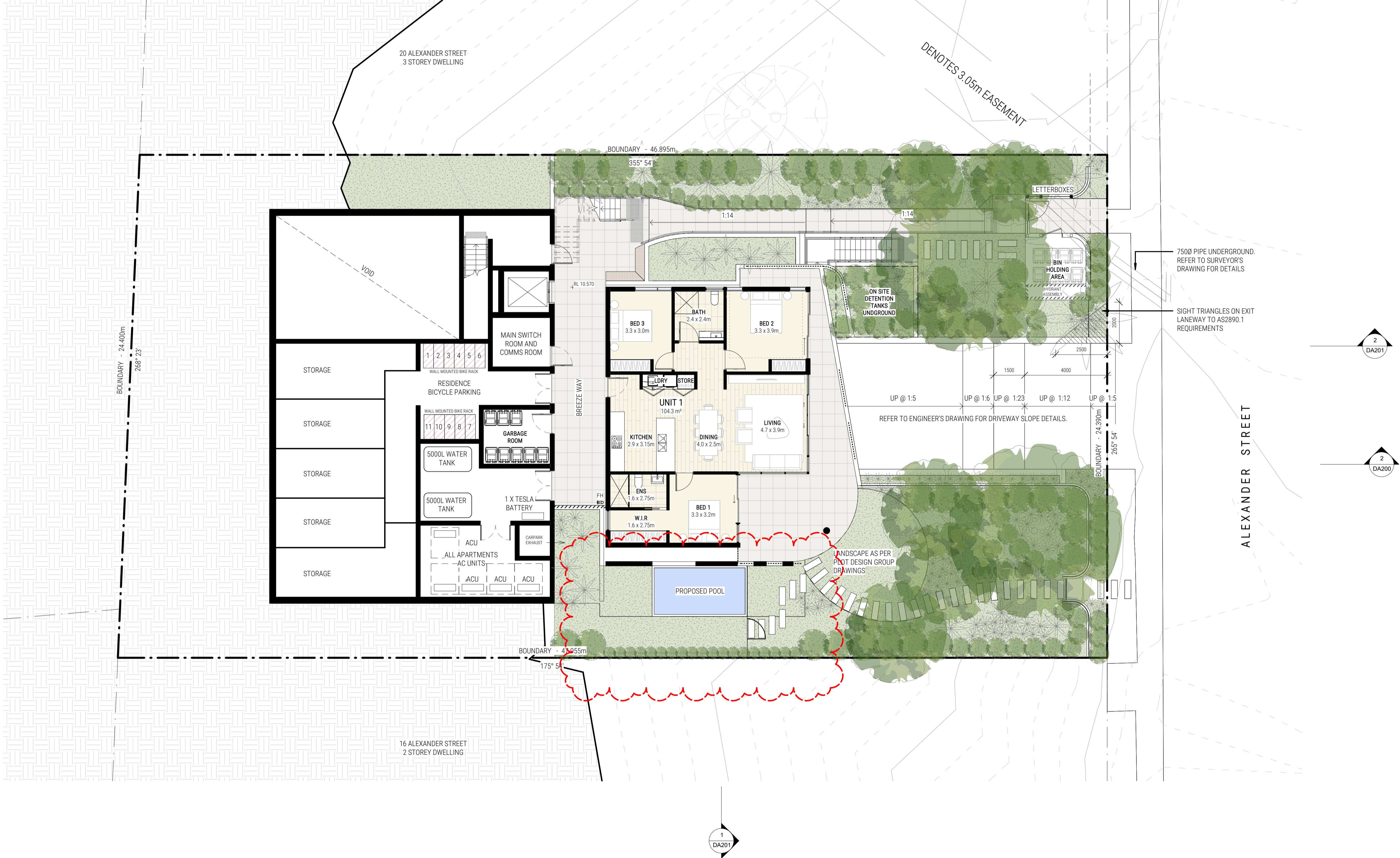



 northern beaches council
THIS PLAN IS TO BE READ IN CONJUNCTION WITH THE CONDITIONS OF DEVELOPMENT CONSENT
 MOD2022/0229

1 DA201

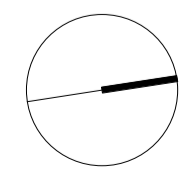


2 DA201

2 DA200

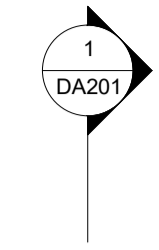
2 DA201

2 DA200



REV NO.	DESCRIPTION	REV DATE
C	4.55 MODIFICATION TO DA	21.04.22
D	4.55 MODIFICATION TO DA	28.07.22

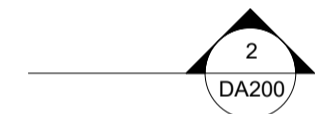
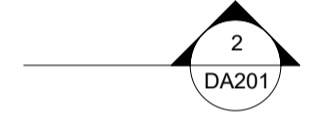
UNDERCROFT FLOOR PLAN	
SHEET NUMBER	DA111
REVISION	D
SCALE @ A1	1 : 100
18 ALEXANDER ST COLLAROY NSW	



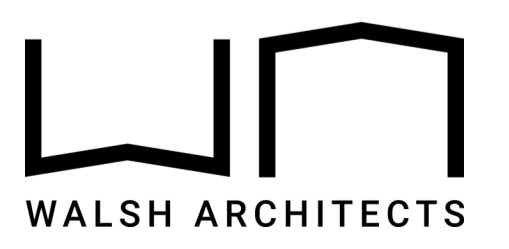
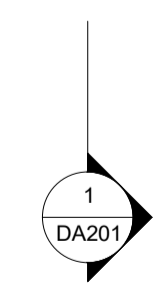
northern beaches council

THIS PLAN IS TO BE READ IN CONJUNCTION WITH THE CONDITIONS OF DEVELOPMENT CONSENT

MOD2022/0229



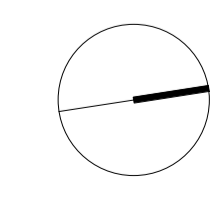
ALEXANDER STREET



Building 3.3/1 Dairy Rd,
Fyshwick ACT 2609

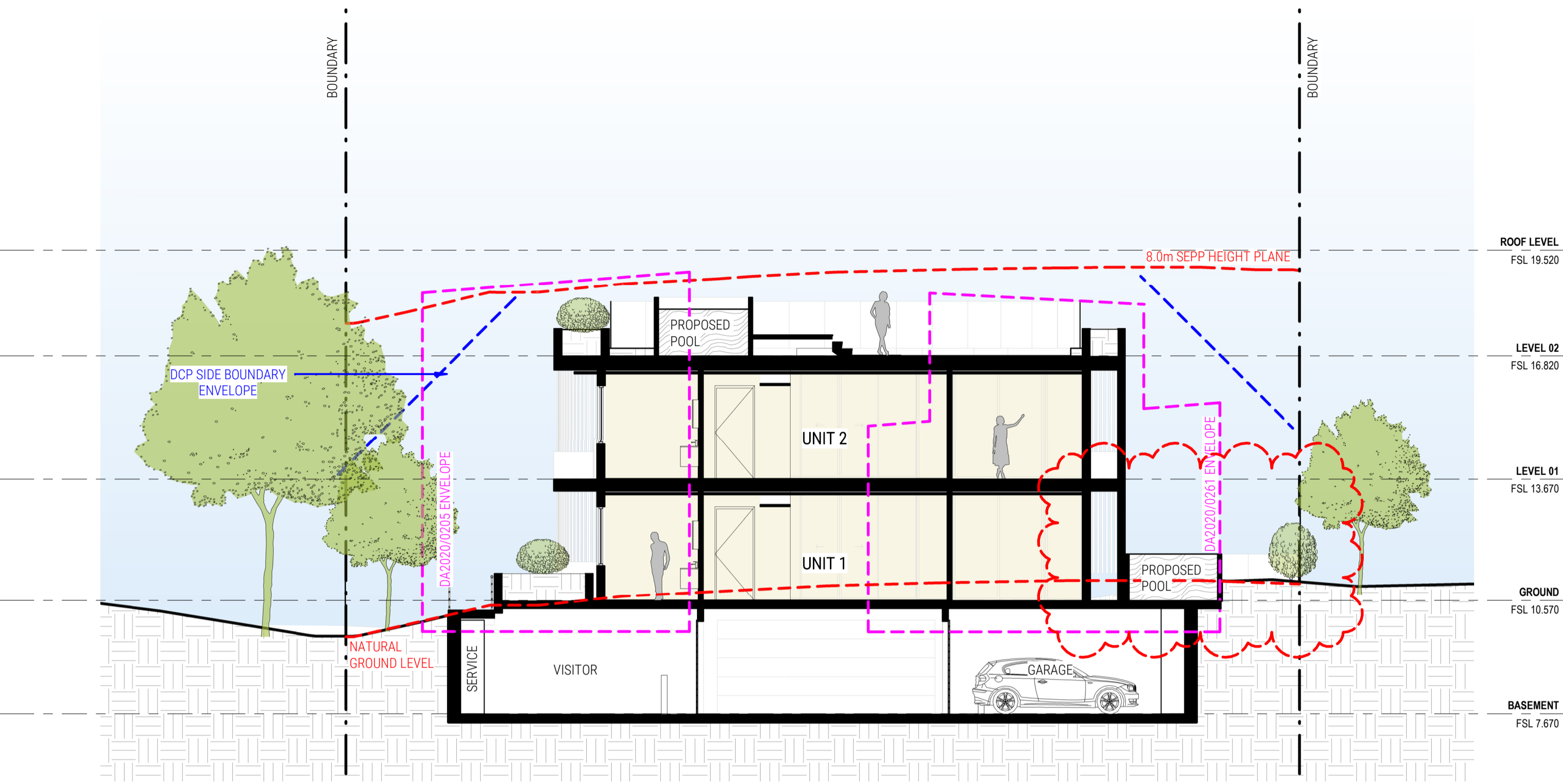
E: scott@walsharchitects.com.au
P: 0466 049 880

Nominated Architect - Scott Walsh
ACT 2624 | NSW 10366



REV NO.	DESCRIPTION	REV DATE
B	AMENDMENTS FOR DA	31.01.22
C	4.55 MODIFICATION TO DA	21.04.22

LEVEL 2 FLOOR PLAN	
SHEET NUMBER	DA113
REVISION	C
SCALE @ A1	1 : 100
18 ALEXANDER ST COLLAROY NSW	



1 CROSS SECTION 1
DA201 1:100 @ A1



 THIS PLAN IS TO BE READ IN CONJUNCTION WITH THE CONDITIONS OF DEVELOPMENT CONSENT
 MOD2022/0229



2 LONG SECTION 1
DA201 1:100 @ A1



1 PROPOSED NORTH ELEVATION
DA300/ 1:100 @ A1



2 PROPOSED SOUTH ELEVATION
DA300/ 1:100 @ A1



3 PROPOSED EAST ELEVATION
DA300/ 1:100 @ A1



4 PROPOSED WEST ELEVATION
DA300/ 1:100 @ A1

northern beaches council
THIS PLAN IS TO BE READ IN CONJUNCTION WITH THE CONDITIONS OF DEVELOPMENT CONSENT
MOD2022/0229

EXTERNAL FINISHES SCHEDULE

CODES	EXTERIOR
F1	- BOARD-FORMED INSITU CONCRETE
F2	- POWDER COATED ALUMINIUM BATTENS
F3	- WHITE - PAINTED EASYLAP FC
F4	- SANDSTONE - EXTERIOR BASEMENT WALL & RETAINING WALLS
F5	- ALUMINIUM WINDOW FRAME - NIGHT SKY
F6	- LYSAGHT METAL ROOF - SURFMIST