

PLANT SCHEDULE

GROUND FLOOR PLANT SCHEDULE						
Abbreviation	Botanical Name	Common Name	Mature Height (m)	Pot Size	Qty	Comments
Trees						
BAC cit	Backhousia citriodora	Lemon Myrtle	3-5	45L	21	Caliper 30mm. Sub surface tree anchor system
BAN int	Banksia integrifolia	Coast Banksia	4-15	100L	2	Caliper 50mm. Sub surface tree anchor system
ELA ret	Elaeocarpus reticulatus 'Primma Donna'	Blueberry Ash	6-8	100L	4	Caliper 50mm. Sub surface tree anchor system
HOW fos (100)	Howia fosteriana	Kentia palm	8-6	100L	5	2.0M clear stem. Sub surface tree anchor system
HOW fos (200)	Howia fosteriana	Kentia palm	8-6	200L	4	4.0M clear stem. Sub surface tree anchor system
LIV aus	Livistona australis	Cabbage-tree Palm	25-30	400L	1	4.0M clear stem. Sub surface tree anchor system
PLU obt	Plumeria obtusa 'Singapore White'	Evergreen Frangipani	3-5	400L	3	Caliper 50mm. Sub surface tree anchor system

Shrubs						
ALP cae	Alpina caerulea	Native Ginger	3	35L	24	
GAR aug	Gardenia augusta 'Florida'	Florists Gardenia	1	400mm	5	
PIT MM	Pittosporum tobira 'Miss Muffet'	Miss Muffet Pittosporum	0.8-1	300mm	21	
RHA CW	Rhaphiolepis indica 'Cosmic White'	Indian Hawthorn	0.6	200mm	40	
RHA OP	Rhaphiolepis indica 'Oriental Pearl'	Indian Hawthorn	1	200mm	12	
VIB dav	Viburnum davidii	David Viburnum	1	300mm	9	
VIB odo	Viburnum odoratissimum	Sweet Viburnum	4	45L	22	Minimum 1.5m height
WES M	Westringia fruticosa 'Mundi'	Coastal Rosemary	0.3	300mm	14	

Accents						
AGA att	Agave attenuata	Foxtail Agave	1	300mm	16	
ALA imp	Alcantarea imperialis 'Ruby'	Imperial Bromilliad	1.5-3	400mm	16	
ANI fla	Anigozanthos flavidus	Kangaroo Paw	2	140mm	50	
ART cir	Arthropodium cirratum	Ranga Lily	0.6	200mm	22	
CLI min	Clivea miniata 'Shade Master'	Clivia	0.5	200mm	20	
CYC rev	Cycas revoluta	Sago Palm	1-2	400mm	21	
DOR exc	Doryanthes excelsa	Gynea Lily	2	45L	23	
DOR exc	Doryanthes excelsa	Gynea Lily	2	75L	4	
LEU bro	Leucophyta brownii	Cusion Bush	1	140mm	4	
RHA exc	Rhapis excelsa	The Lady Palm	2-4	300mm	44	
SEN ser	Senecio serpens	Blue Chalksticks	0.2-0.3	140mm	80	
SPA LA	Spathiphyllum 'Little Angel'	Peace Lily	0.6	140mm	80	

Ferns						
ASP aus	Asplenium australasicum	Birds Nest Fern	1-2	45L	23	
CYA coo	Cyathea cooperi	Australian Tree Fern	5-20	2-3 feet	6	
DOO asp	Doodia aspera	Pickly Rasp Fern	0.5	140mm	145	

Grasses & Groundcovers						
ACA 'CI'	Casaurina glouca 'Cousin It'	Cousin It	0.3	140mm	50	
DIA cae	Dianella caerula	Paroo Lily	0.5	Tube	275	
DIC SF	Dichondra argentea 'Silver Falls'	Silver Kidney Creeper	0.3	140mm	66	
GAZ tom	Gazania tomentosa	Silver Gazania	0.2	140mm	50	
HIB sca	Hibbertia scandens	Guinea Flower	0.15-0.25	Tube	31	
JUN con	Juniperus conferta	Japanese Shore Juniper	0.3	200mm	20	
LOM lon	Lomandra longifolia 'Tanika'	Spiky-headed Mat-rush	1	Tube	65	
LIR mus	Liriope muscari 'Evergreen Giant'	Giant Liriope	0.5	140mm	40	
SED 'GM'	Sedum 'Gold Mound'	Mexican Stonecrop	0.15	140mm	40	
TRA jas	Trachelospermum jasminoides	Star Jasmine	0.5	Tube	50	
VIO hed	Viola hederacea	Native Viola	0.2	Tube /Flat	145	

FIRST FLOOR PLANT SCHEDULE						
Abbreviation	Botanical Name	Common Name	Mature Height (m)	Pot Size	Qty	Comments
Trees						
HOW fos (75)	Howia fosteriana	Kentia palm	44720	400L	6	3.0M clear stem. Sub surface tree anchor system
HOW fos (200)	Howia fosteriana	Kentia palm	44720	700L	10	4.0M clear stem. Sub surface tree anchor system

Shrubs						
CLI min	Clivea miniata 'Shade Master'	Bush lily	0.5	200mm	20	
MIC fig	Michellia figo	Port Wine Magonolia	3	1	34	
RHA CW	Rhaphiolepis indica 'Cosmic White'	Indian Hawthorn	0.6	200mm	32	

Accents						
ALA imp	Alcantarea imperialis 'Ruby'	Imperial Bromilliad	1.5-3	400mm	9	
ART cir	Arthropodium cirratum	Ranga Lily	0.6	200mm	40	
LEU bro	Leucophyta brownii	Cusion Bush	1	140mm	8	
PHO ten	Phormium tenax	New Zealand Flax	1	140mm	11	
RHA exc	Rhapis excelsa	The Lady Palm	43923	300mm	8	






Ferns						
ASP aus	Asplenium australasicum	Birds Nest Fern	1-2	45L	9	
CYA coo	Cyathea cooperi	Australian Tree Fern	5-20	2-3 feet	8	
DOO asp	Doodia aspera	Pickly Rasp Fern	0.5	140mm	126	

Grasses & Groundcovers						
ACA 'CI'	Casaurina glouca 'Cousin It'	Cousin It	0.3	140mm	10	
ACA cog	Acacia cognata 'Limelight'	River wattle	0.5-1	Tube	20	
AJU rep CG	Ajuga reptans 'Catlin's Giant'	Carpet Bugle	0.3	140mm	186	
CAL ins	Calathea insignis	Rattlesnake Plant	0.4	200mm	52	
CAR app	Carex appressa	Tall Sage	0.5	140mm	2	
DIA cae	Dianella caerula	Paroo Lily	0.5	Tube	100	
DIC rep	Dichondra repens	Kidney Weed	0.3	Tray	225	
GAR R	Gardenia augusta 'Redican'	Gardenia	0.5	200mm	120	
HOS sp.	Hosta species	Hosta	0.3	200mm	107	
OPH jap	Ophiopogon japonicus	Mondo Grass Green	0.3	140mm	225	
ROS P	Rosmarinus officinalis 'Prostratus'	Creeping Rosemary	0.3	140mm	20	
SED 'GM'	Sedum 'Gold Mound'	Mexican Stonecrop	0.15	140mm	24	
SCA aem	Scaevola aemula	Fairy Fan-flower	0.4-0.5	140mm	13	
TRA jas	Trachelospermum jasminoides	Star Jasmine	0.5	Tube	48	

- B

REVISION TO DA (20/08/21)
Additional plant species, adjusted quantities & pot sizes revisions
- C

REVISION TO DA (20/08/21)
1 x Livistonia australis removed

07/07/22		4.56 MODIFICATION		AD
24/06/22		4.56 MODIFICATION		AD
09/06/22	A	FOR TENDER		AD
03/06/22	P1	FOR INTERNAL REVIEW		AD
DATE	ISSUE	AMENDMENT		BY
DRAWING TITLE				
PLANT SCHEDULE				
APPROVED FOR RELEASE				
AILA #1420				
DATE	DRAWN		CHECKED	
07/07/22	AD		CG	
PROJECT No.	DRAWING No.		ISSUE	
NEO01	NEO01-CD-003			
COPYRIGHT OF DESIGN SHOWN HERE IS RETAINED AND AUTHORITY FOR ANY REPRODUCTION, IF IN DOUBT ASK. FOLLOW WRITTEN DIMENSIONS ONLY. DO NOT SCALE OFF DRAWINGS. DO NOT KEEP SUPERSEDED DRAWINGS ON SITE.				
<div><div></div><div><div>GARTNERTROVATO</div><div>ARCHITECTS</div><div>Suite 13, L1 Pittwater Pl, 10 Park St Mona Vale, NSW 2103</div></div></div>				
LANDSCAPE ARCHITECT				
<div><div></div><div>Phone: 61 2 8411 2734 4P/6 Jubilee Avenue, Warriewood, NSW Australia www.symstudio.com</div></div>				
CLIENT				
<div><div>neoscape</div><div>project solutions</div><div>www.neoscape.com.au</div></div>				
CLIENT				
<div><div>Neoscape</div><div>223 Liverpool Street Darlinghurst, NSW 2010</div></div>				
PROJECT				
<div><div>THE BATHERS</div><div>4 Collaroy Street Collaroy, NSW</div></div>				

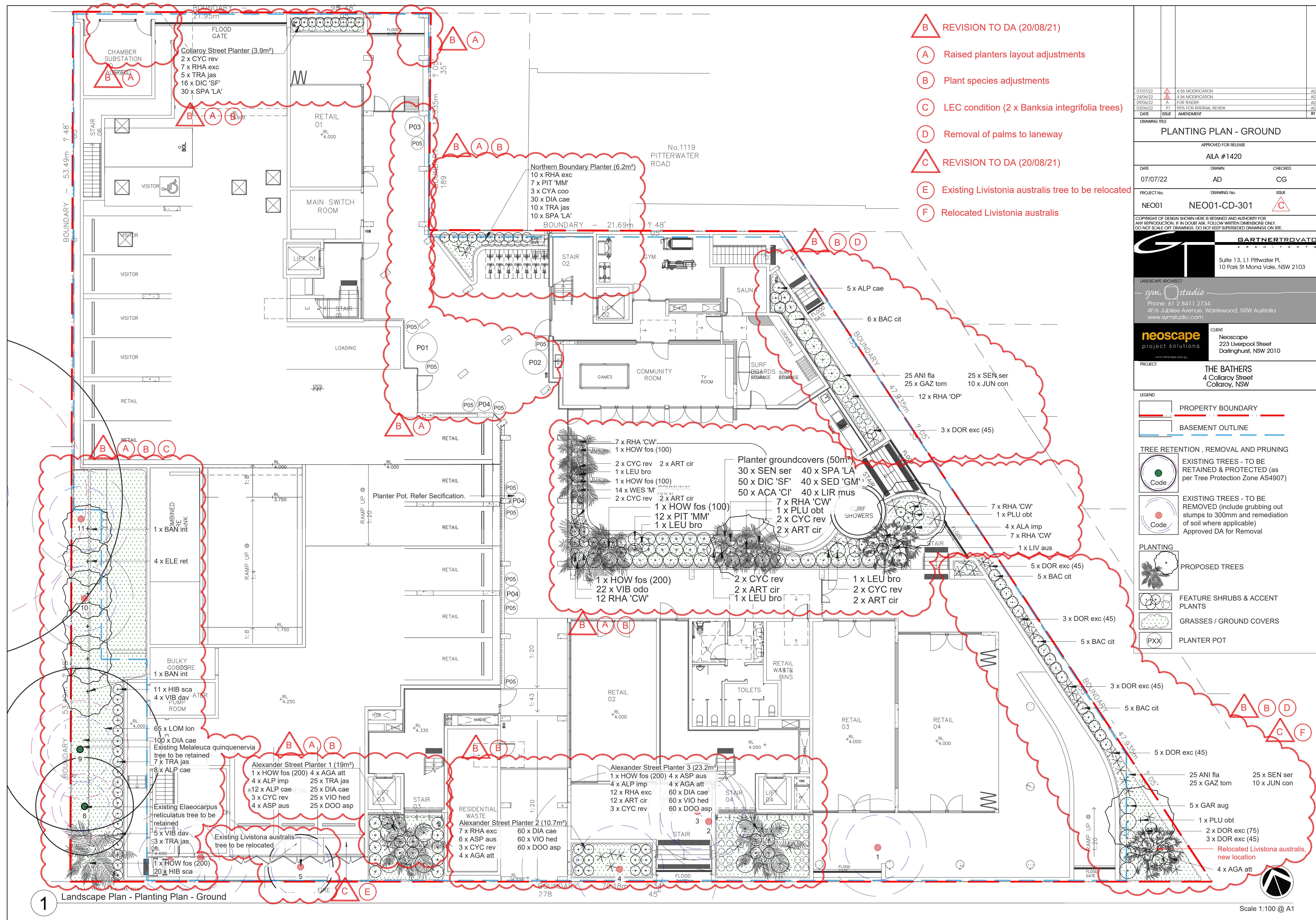
SECOND FLOOR PLANT SCHEDULE						
Abbreviation	Botanical Name	Common Name	Mature Height (m)	Pot Size	Qty	Comments
Grasses & Groundcovers						
ACA 'CI'	Casaurina glouca 'Cousin It'	Cousin It	0.3	140mm	10	
CAR app	Carex appressa	Tall Sage	0.5	140mm	2	
ROS P	Rosmarinus officinalis 'Prostratus'	Creeping Rosemary	0.3	140mm	20	


THIRD FLOOR PLANT SCHEDULE						
Abbreviation	Botanical Name	Common Name	Mature Height (m)	Pot Size	Qty	Comments
Trees						
HIB til	Hibiscus tillacus	Sea Hibiscus	4-8	75L	1	Min. 2.5m height, caliper 38mm. Sub surface tree anchor system
LAU nob	Laurus nobilis	Bay Tree	2-1	75L	2	Caliper 25mm. Sub surface tree anchor system
MET 'FF'	Metrosideros excelsa	NZ Christmas Tree	9-11	75L	74	Caliper 45mm. Sub surface tree anchor system

Shrubs						
RHA OP	Rhaphiolepis indica 'Oriental Pearl'	Indian Hawthorn	1	200mm	6	
ROS off	Rosmarinus officinalis	Rosemary	2-3	140mm	15	
SYZ AM	Syzygium australe 'Allyn Magic'	Lilly Pilly	2	300mm	45	
THY max	Thysanolaena maxima	Tiger grass	2	75L	19	

Accents						
DOR exc	Doryanthes excelsa	Gynea Lily	2	45L	9	
SAL leu	Salvia leucantha	Salvia Mexican Sage	1-1.5	140mm	25	

Grasses & Groundcovers						
ACA 'CI'	Casaurina glouca 'Cousin It'	Cousin It	0.3	140mm	10	
ACA cog	Acacia cognata 'Limelight'	River wattle	0.5-1	Tube	130	
BRA BD	Brachyscome multifida 'Break of Day'	Cut Leaf Daisy	0.5	140mm	6	
CAR app	Carex appressa	Tall Sage	0.5	140mm	42	
JUN con	Juniperus conferta	Japanese Shore Juniper	0.3	200mm	6	
ROS P	Rosmarinus officinalis 'Prostratus'	Creeping Rosemary	0.3	140mm	196	
SCA aem	Scaevola aemula	Fairy Fan-flower	0.4-0.5	140mm	195	
SED 'GM'	Sedum 'Gold Mound'	Mexican Stonecrop	0.15	140mm	116	




07/07/22		4.56 MODIFICATION	AD
24/06/22		4.56 MODIFICATION	AD
09/06/22	A	FOR TENDER	AD
03/06/22	P1	95% FOR INTERNAL REVIEW	AD
DATE	ISSUE	AMENDMENT	BY

PLANTING PLAN - GROUND

APPROVED FOR RELEASE

AIRL #1420

DATE	DRAWN	CHECKED
07/07/22	AD	CG

PROJECT No.	DRAWING No.	ISSUE
NEO01	NEO01-CD-301	

COPYRIGHT OF DESIGN SHOWN HERE IS RETAINED AND AUTHORITY FOR ANY REPRODUCTION, IF IN DOUBT ASK. FOLLOW WRITTEN DIMENSIONS ONLY. DO NOT SCALE OFF DRAWINGS. DO NOT KEEP SUPERSEDED DRAWINGS ON SITE.



LANDSCAPE ARCHITECT

sym. studio

Phone: 61 2 8411 2734
4F/6 Jubilee Avenue, Warriewood, NSW Australia
www.symstudio.com

neoscape
project solutions

CLIENT
Neoscape
223 Liverpool Street
Darlinghurst, NSW 2010

PROJECT

THE BATHERS
4 Collaroy Street
Collaroy, NSW

LEGEND





-
- PROPERTY BOUNDARY
- BASEMENT OUTLINE

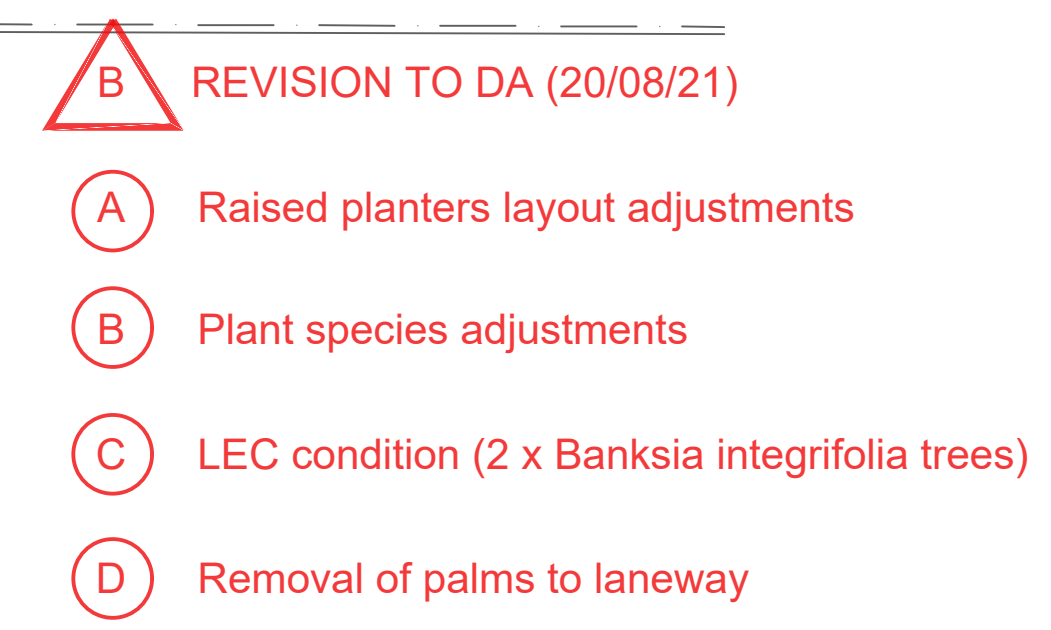
TREE RETENTION , REMOVAL AND PRUNING

- EXISTING TREES - TO BE RETAINED & PROTECTED** (as per Tree Protection Zone AS4907)

EXISTING TREES - TO BE REMOVED (include grubbing out stumps to 300mm and remediation of soil where applicable)
Approved DA for Removal

PLANTING

- | | |
|---|--------------------------------|
|  | PROPOSED TREES |
|  | FEATURE SHRUBS & ACCENT PLANTS |
|  | GRASSES / GROUND COVERS |
|  | PLANTER POT |



DRAWING TITLE

PLANTING PLAN - LEVEL 1

DATE	DRAWN	CHECKED
21/06/22	AD	CC

NEO01 NEO01-CD-302 



GARTNERTROVATO
ARCHITECTS

LANDSCAPE ARCHITECT

4F/6 Jubilee Avenue, Warfield, NSW Australia
www.symstudio.com

Darlinghurst, NSW 2010

LEGEND

BASEMENT OUTLINE

RETAINED & PROTECTED (as per Tree Protection Zone AS4907)

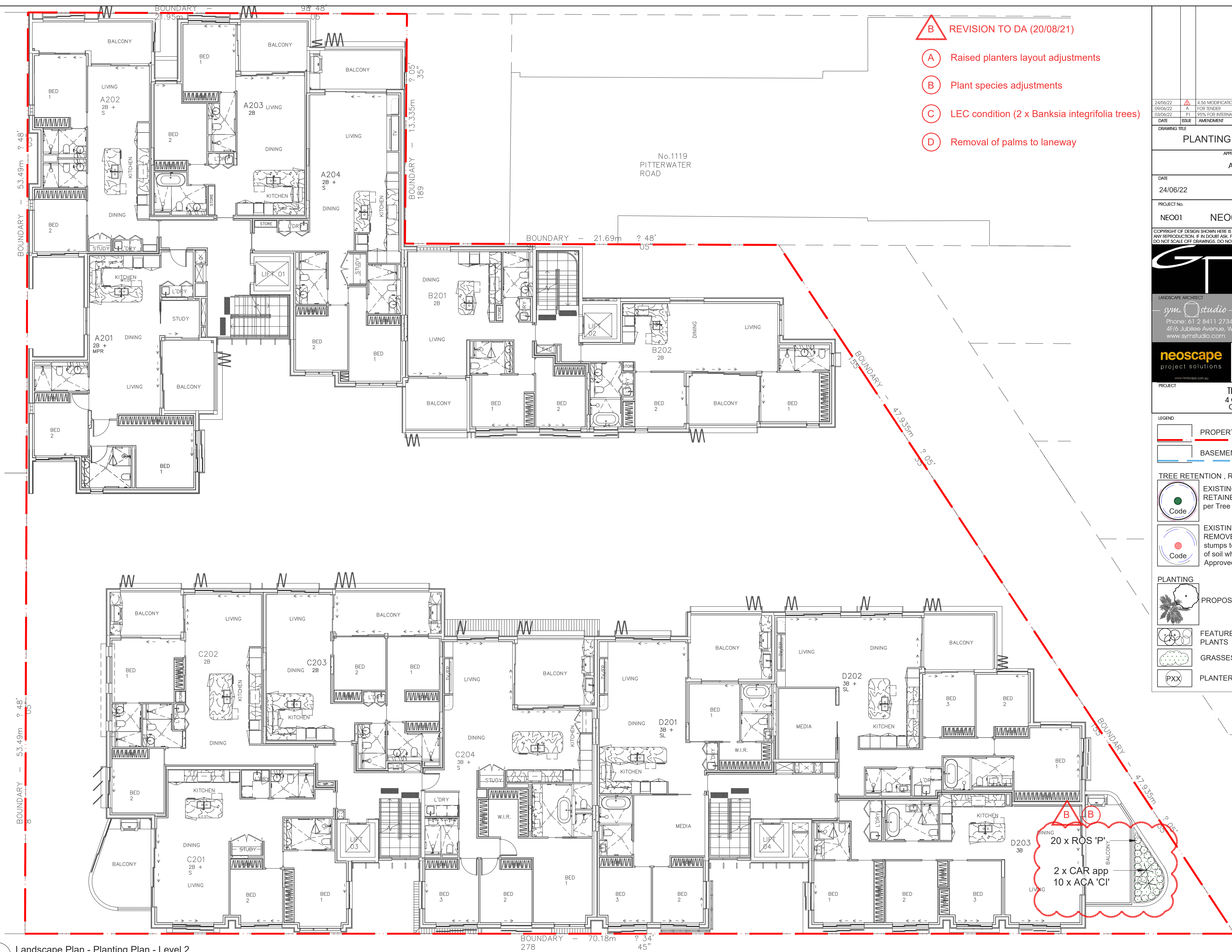
REMOVED (include grubbing out stumps to 300mm and remediation of soil where applicable)

PLANTING



FEATURE SHRUBS & ACCENT

GRASSES / GROUND COVERS



- B** REVISION TO DA (20/08/21)
- A** Raised planters layout adjustments
- B** Plant species adjustments
- C** LEC condition (2 x Banksia integrifolia trees)
- D** Removal of palms to laneway

24/06/22	4.56 MODIFICATION	AD
09/06/22	A FOR TENDER	AD
03/06/22	P1 95% FOR INTERNAL REVIEW	AD
DATE	ISSUE	BY

DRAWING TITLE
PLANTING PLAN - LEVEL 2

APPROVED FOR RELEASE
AILA #1420

DATE	DRAWN	CHECKED
24/06/22	AD	CG

PROJECT No.	DRAWING No.	ISSUE
NEO01	NEO01-CD-303	B

COPYRIGHT OF DESIGN SHOWN HERE IS RETAINED AND AUTHORITY FOR ANY REPRODUCTION, IF IN DOUBT ASK. FOLLOW WRITTEN DIMENSIONS ONLY. DO NOT SCALE OFF DRAWINGS. DO NOT KEEP SUPERSEDED DRAWINGS ON SITE.

GARTNERTROVATO
ARCHITECTS
Suite 13, L1 Pittwater Pl,
10 Park St Mona Vale, NSW 2103

LANDSCAPE ARCHITECT
sym. studio
Phone: 61 2 8411 2734
47/6 Jubilee Avenue, Warriewood, NSW Australia
www.symstudio.com

CLIENT
neoscape
project solutions
www.neoscape.com.au

223 Liverpool Street
Darlinghurst, NSW 2010

PROJECT
THE BATHERS
4 Collaroy Street
Collaroy, NSW

LEGEND

- PROPERTY BOUNDARY
- BASEMENT OUTLINE

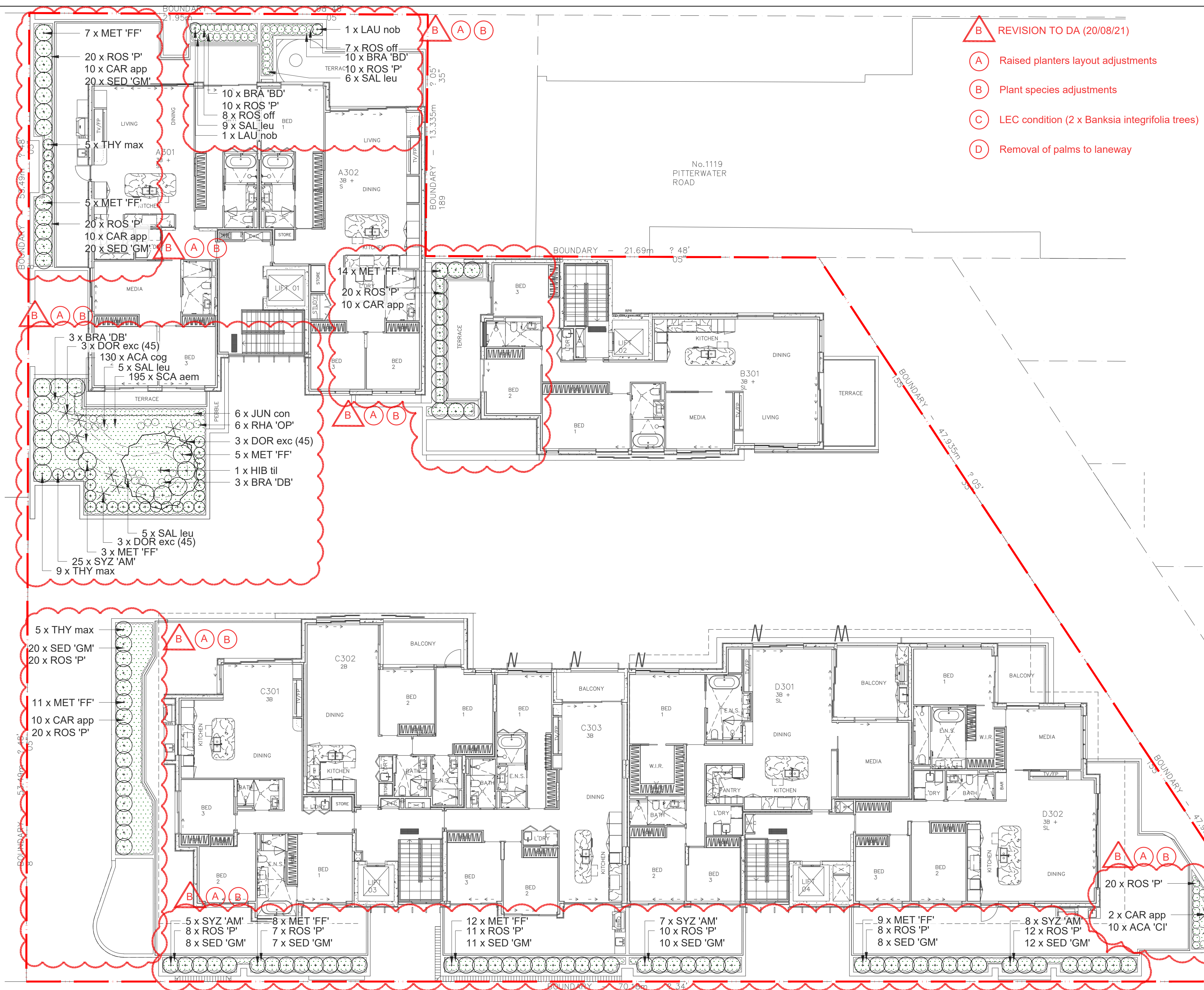
TREE RETENTION, REMOVAL AND PRUNING

- EXISTING TREES - TO BE RETAINED & PROTECTED (as per Tree Protection Zone AS4907)
- EXISTING TREES - TO BE REMOVED (include grubbing out stumps to 300mm and remediation of soil where applicable) Approved DA for Removal

PLANTING

- PROPOSED TREES
- FEATURE SHRUBS & ACCENT PLANTS
- GRASSES / GROUND COVERS
- PLANTER POT

Scale 1:100 @ A1



- B** REVISION TO DA (20/08/21)
- A** Raised planters layout adjustments
- B** Plant species adjustments
- C** LEC condition (2 x Banksia integrifolia trees)
- D** Removal of palms to laneway

24/06/22	4.56 MODIFICATION	AD
09/06/22	A FOR TENDER	AD
03/06/22	P1 95% FOR INTERNAL REVIEW	AD
DATE	ISSUE	BY

DRAWING TITLE
PLANTING PLAN - LEVEL 3

APPROVED FOR RELEASE
AILA #1420

DATE	DRAWN	CHECKED
24/06/22	AD	CG

PROJECT No.	DRAWING No.	ISSUE
NEO01	NEO01-CD-304	B

COPYRIGHT OF DESIGN SHOWN HERE IS RETAINED AND AUTHORITY FOR ANY REPRODUCTION, IF IN DOUBT ASK. FOLLOW WRITTEN DIMENSIONS ONLY. DO NOT SCALE OFF DRAWINGS. DO NOT KEEP SUPERSEDED DRAWINGS ON SITE.

GARTNERTROVATO
ARCHITECTS
Suite 13, L1 Pittwater Pl,
10 Park St Mona Vale, NSW 2103

sym. studio
LANDSCAPE ARCHITECT
Phone: 61 2 8411 2734
47/6 Jubilee Avenue, Warriewood, NSW Australia
www.symstudio.com.au

neoscope
project solutions
www.neoscope.com.au

CLIENT
Neoscope
223 Liverpool Street
Darlinghurst, NSW 2010

PROJECT
THE BATHERS
4 Collaroy Street
Collaroy, NSW

LEGEND

- PROPERTY BOUNDARY
- BASEMENT OUTLINE

TREE RETENTION, REMOVAL AND PRUNING

- EXISTING TREES - TO BE RETAINED & PROTECTED (as per Tree Protection Zone AS4907)
- EXISTING TREES - TO BE REMOVED (include grubbing out stumps to 300mm and remediation of soil where applicable) Approved DA for Removal

PLANTING

- PROPOSED TREES
- FEATURE SHRUBS & ACCENT PLANTS
- GRASSES / GROUND COVERS
- PLANTER POT