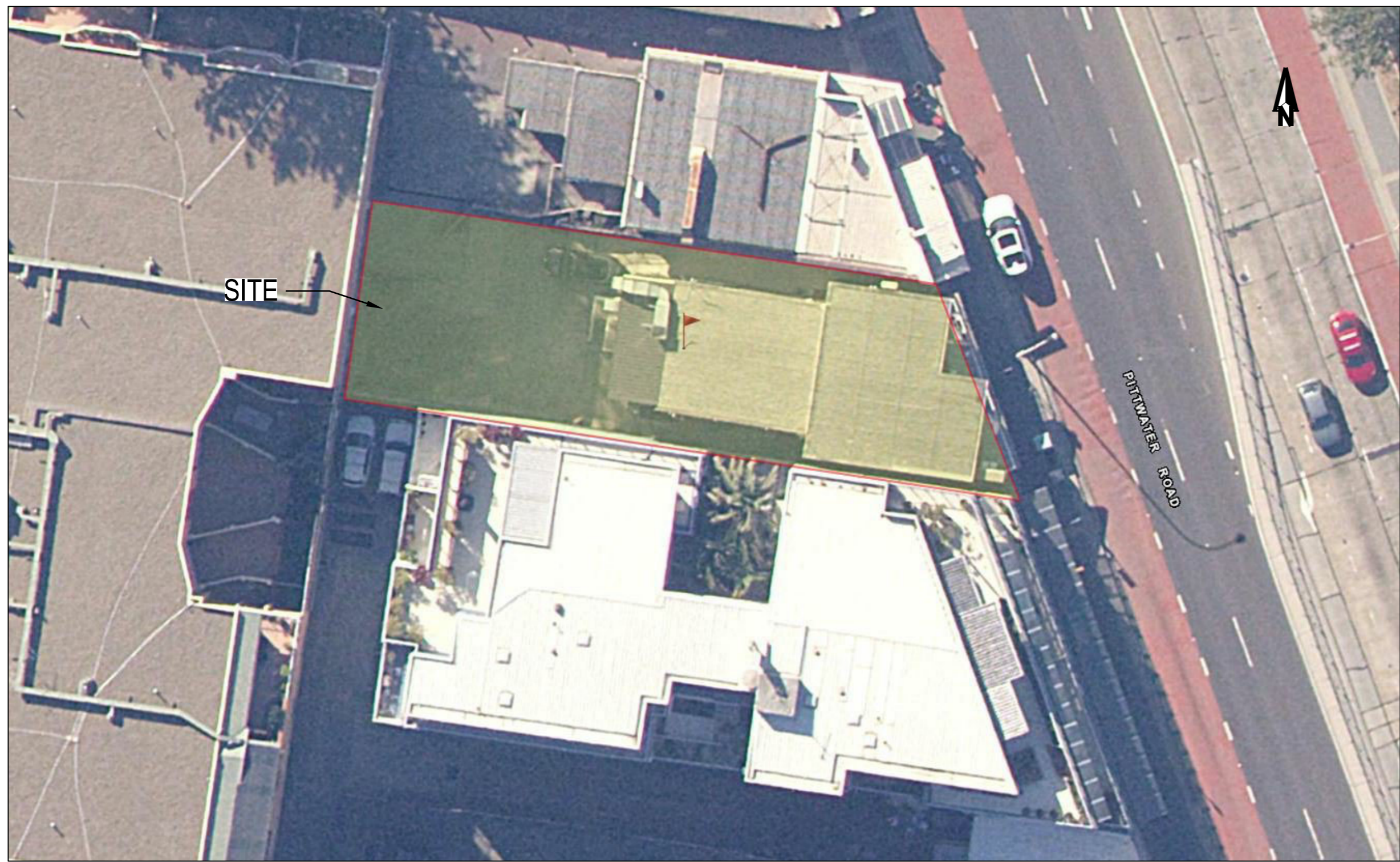


PROJECT: SHOP TOP HOUSING DEVELOPMENT

PLANSET: CONCEPT STORMWATER DRAINAGE PLAN

CLIENT: LOTUS PROJECT MANAGEMENT PTY LTD

DRAWING LIST		
DWG NO.	REV	DWG TITLE
GENERAL		
PS03-A000	C	COVER SHEET
CONSTRUCTION MANAGEMENT WORKS		
PS03-B300	B	SEDIMENT & EROSION CONTROL PLAN
PS03-B310	A	SEDIMENT & EROSION CONTROL DETAILS
DRAINAGE		
PS03-E100	B	DRAINAGE PLAN - GROUND FLOOR
PS03-E101	A	DRAINAGE PLAN - ROOF PLAN
PS03-E200	C	DRAINAGE DETAILS
PS03-E600	B	OSD CATCHMENT PLANS & RESULTS



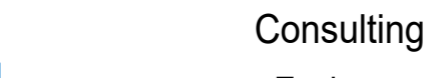
LOCALITY PLAN
NOT TO SCALE

LGA: NORTHERN BEACHES COUNCIL

1129-1131 PITTWATER ROAD, COLLAROY, NSW, 2097
LOT 4 DP 7445 AND LOT 1

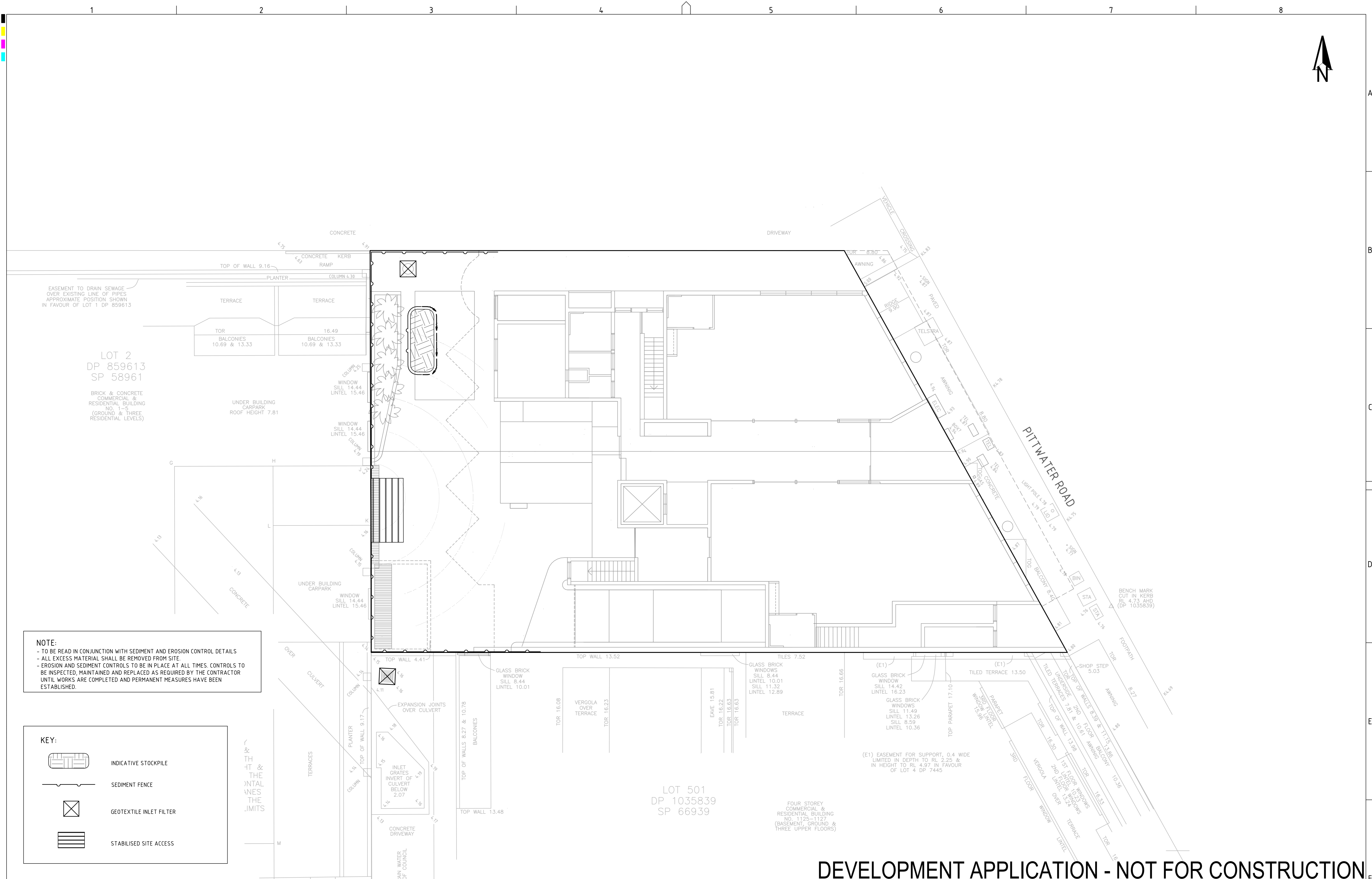
DP: 859613

DEVELOPMENT APPLICATION - NOT FOR CONSTRUCTION

REV	DESCRIPTION	DATE	DRAWN	DESIGNED	CHECKED	APPRVD	SCALE	GRID	DATUM	PROJECT MANAGER	CLIENT	<div><div>Consulting Engineers Environment Water Geotechnical Civil</div></div> <div>Suite 201, 20 George St, Hornsby, NSW 2077 Australia Phone: (02) 9476 9999 Fax: (02) 9476 8767 Email: mail@martens.com.au Internet: www.martens.com.au</div>	DRAWING TITLE				
C	MINOR AMENDMENT	28/10/2020	JS	SL	SL	TH		---	---	TH	LOTUS PROJECT MANAGEMENT PTY LTD		COVERSHEET				
B	MINOR AMENDMENT	31/03/2020	JS	SS	SL	TH					PROJECT NAME/PLANSET TITLE SHOP TOP HOUSING DEVELOPMENT CONCEPT STORMWATER DRAINAGE PLAN 1129-1131 PITTWATER ROAD, COLLAROY, NSW, 2097 LOT 4 DP 7445 AND LOT 1 DP 859613		PROJECT NO.	PLANSET NO.	RELEASE NO.	DRAWING NO.	REVISION
A	INITIAL RELEASE	26/09/2019	LL	SS	SL	AN							P1907336	PS03	R04	PS03-A000	C
													DRAWING ID: P1907336-PS03-R04-A000				
DISCLAIMER & COPYRIGHT This plan must not be used for construction unless signed as approved by principal certifying authority. All measurements in millimetres unless otherwise specified. This drawing must not be reproduced in whole or part without prior written consent of Martens & Associates Pty Ltd. (C) Copyright Martens & Associates Pty Ltd																	

A1 / A3 LANDSCAPE [A1LC_v02.0.0]

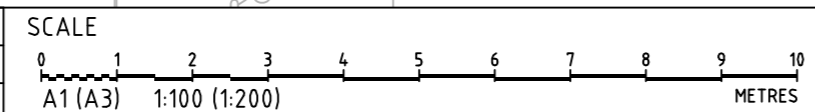
PRINTED: 2020-10-28 14:05:00
USER: JSMANET



NOTE:
- TO BE READ IN CONJUNCTION WITH SEDIMENT AND EROSION CONTROL DETAILS
- ALL EXCESS MATERIAL SHALL BE REMOVED FROM SITE.
- EROSION AND SEDIMENT CONTROLS TO BE IN PLACE AT ALL TIMES. CONTROLS TO BE INSPECTED, MAINTAINED AND REPLACED AS REQUIRED BY THE CONTRACTOR UNTIL WORKS ARE COMPLETED AND PERMANENT MEASURES HAVE BEEN ESTABLISHED.

- KEY:**
- INDICATIVE STOCKPILE
 - SEDIMENT FENCE
 - GEOTEXTILE INLET FILTER
 - STABILISED SITE ACCESS

REV	DESCRIPTION	DATE	DRAWN	DESIGNED	CHECKED	APPRVD
B	MINOR AMENDMENT	31/03/2020	JS	SS	SL	TH
A	INITIAL RELEASE	26/09/2019	LL	SS	SL	AN



GRID
MGA
DATUM
mAHD
PROJECT MANAGER
TH

DISCLAIMER & COPYRIGHT
This plan must not be used for construction unless signed as approved by principal certifying authority.
All measurements in millimetres unless otherwise specified.
This drawing must not be reproduced in whole or part without prior written consent of Martens & Associates Pty Ltd.
(C) Copyright Martens & Associates Pty Ltd

CLIENT
LOTUS PROJECT MANAGEMENT PTY LTD

PROJECT NAME/PLANSET TITLE
SHOP TOP HOUSING DEVELOPMENT
CONCEPT STORMWATER DRAINAGE PLAN

1129-1131 PITTWATER ROAD, COLLAROY, NSW, 2097
LOT 4 DP 7445 AND LOT 1 DP 859613

Consulting Engineers
Environment
Water
Geotechnical
Civil

Suite 201, 20 George St, Hornsby, NSW 2077 Australia Phone: (02) 9476 9999 Fax: (02) 9476 8767
Email: mail@martens.com.au Internet: www.martens.com.au

DRAWING TITLE				
SEDIMENT & EROSION CONTROL PLAN				
PROJECT NO.	PLANSET NO.	RELEASE NO.	DRAWING NO.	REVISION
P1907336	PS03	R04	PS03-B300	B

DEVELOPMENT APPLICATION - NOT FOR CONSTRUCTION

TYPE II SAP

STABILISED ACCESS POINT - TYPE 2



- IT SHOULD BE NOTED THAT THESE TYPES OF SAPS ARE CONSIDERED TO BE APPLICABLE FOR THE MAJORITY OF ACTIVITIES HOWEVER SOME SITES MAY REQUIRE SPECIAL CONSIDERATION.



SEDIMENT FENCE

SD 6-8

A CORRECTLY DESIGNED AND INSTALLED SHAKER PAD WILL ASSIST IN PREVENTING SEDIMENT TRANSFER FROM A SITE. ANY STABILISED ACCESS POINT (SAP) CAN BE DESIGNED WITH A SHAKER PAD (COMPULSOPRY IN TYPE II SAP'S)

THE SHAKER PAD:

- THE SHAKER PAD MUST BE PROVIDED WITH SUITABLE BARRIERS AT THE SIDES TO ENSURE THAT ALL TYERS OF VEHICLES LEAVING THE SITE TRAVERSE THE DEVICE.



GEOTEXTILE INLET FILTER


SD 6-12

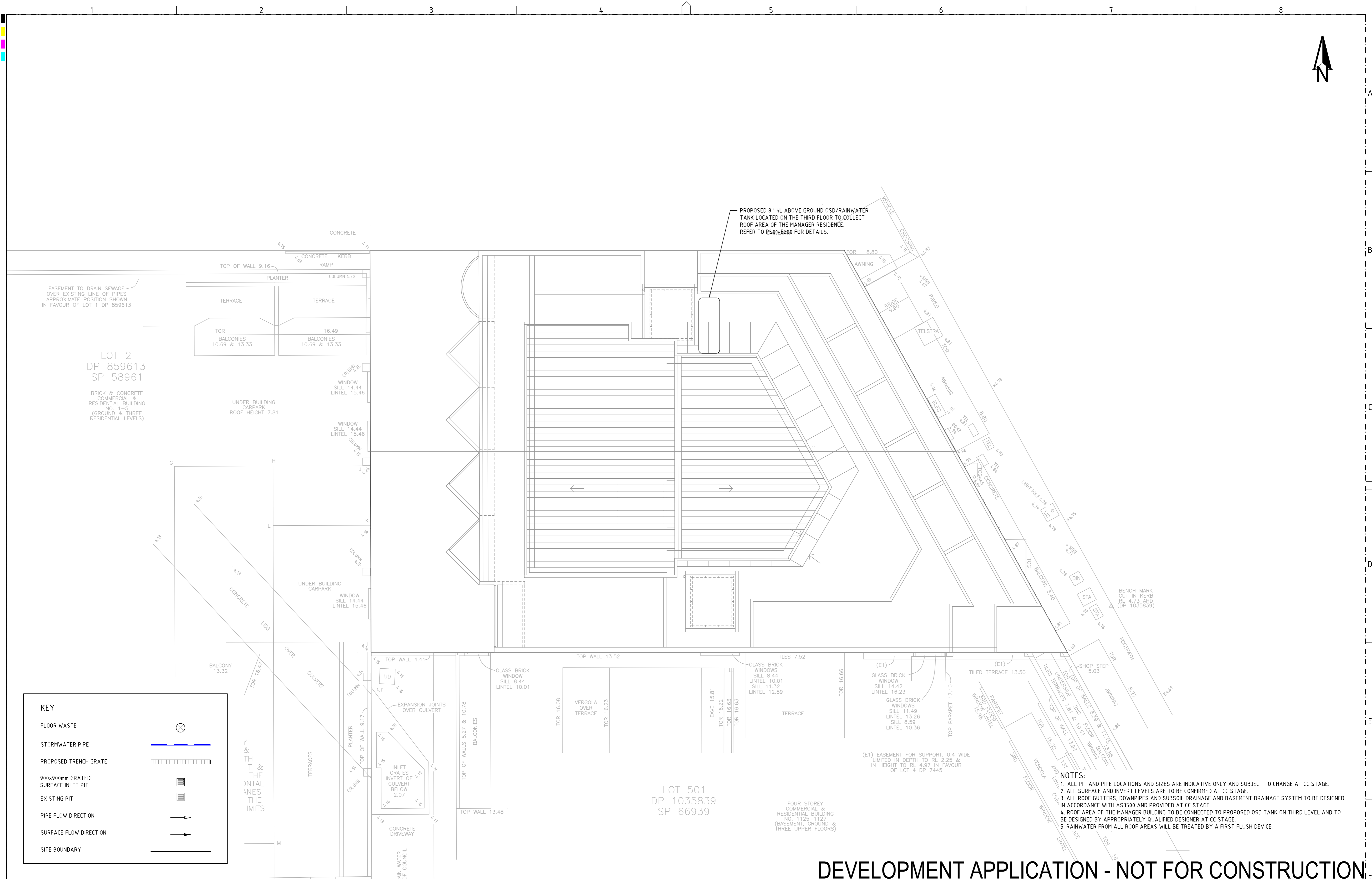


STOCKPILES

SD 4-1

DEVELOPMENT APPLICATION - NOT FOR CONSTRUCTION

REV	DESCRIPTION	DATE	DRAWN	DESIGNED	CHECKED	APPROVED	SCALE	GRID	DATUM	PROJECT MANAGER	CLIENT	 <div> Consulting Engineers Environment Water Geotechnical Civil </div>		DRAWING TITLE	
A	INITIAL RELEASE	26/09/2019	LL	SS	SL	AN				AN	LOTUS PROJECT MANAGEMENT PTY LTD			SEDIMENT & EROSION CONTROL DETAILS	
								DISCLAIMER & COPYRIGHT		PROJECT NAME/PLANSET TITLE					
								This plan must not be used for construction unless signed as approved by principal certifying authority.		SHOP TOP HOUSING DEVELOPMENT					
								All measurements in millimetres unless otherwise specified.		CONCEPT STORMWATER DRAINAGE PLAN					
								This drawing must not be reproduced in whole or part without prior written consent of Martens & Associates Pty Ltd.		1129-1131 PITTWATER ROAD, COLLARBY, NSW, 2097					
								(C) Copyright Martens & Associates Pty Ltd		LOT 4 DP 7445 AND LOT 1 DP 859613					
A1 / A3 LANDSCAPE (A1/L v02.0.01)												Suite 201, 20 George St, Hornsby, NSW 2077 Australia Phone: (02) 9476 9999 Fax: (02) 9476 8767 Email: mail@martens.com.au Internet: www.martens.com.au		PROJECT NO. PLANSET NO. RELEASE NO. DRAWING NO. REVISION P1907336 PS03 R04 PS03-B310 A	



KEY

FLOOR WASTE

STORMWATER PIPE

PROPOSED TRENCH GRATE

900x900mm GRATED SURFACE INLET PIT

EXISTING PIT

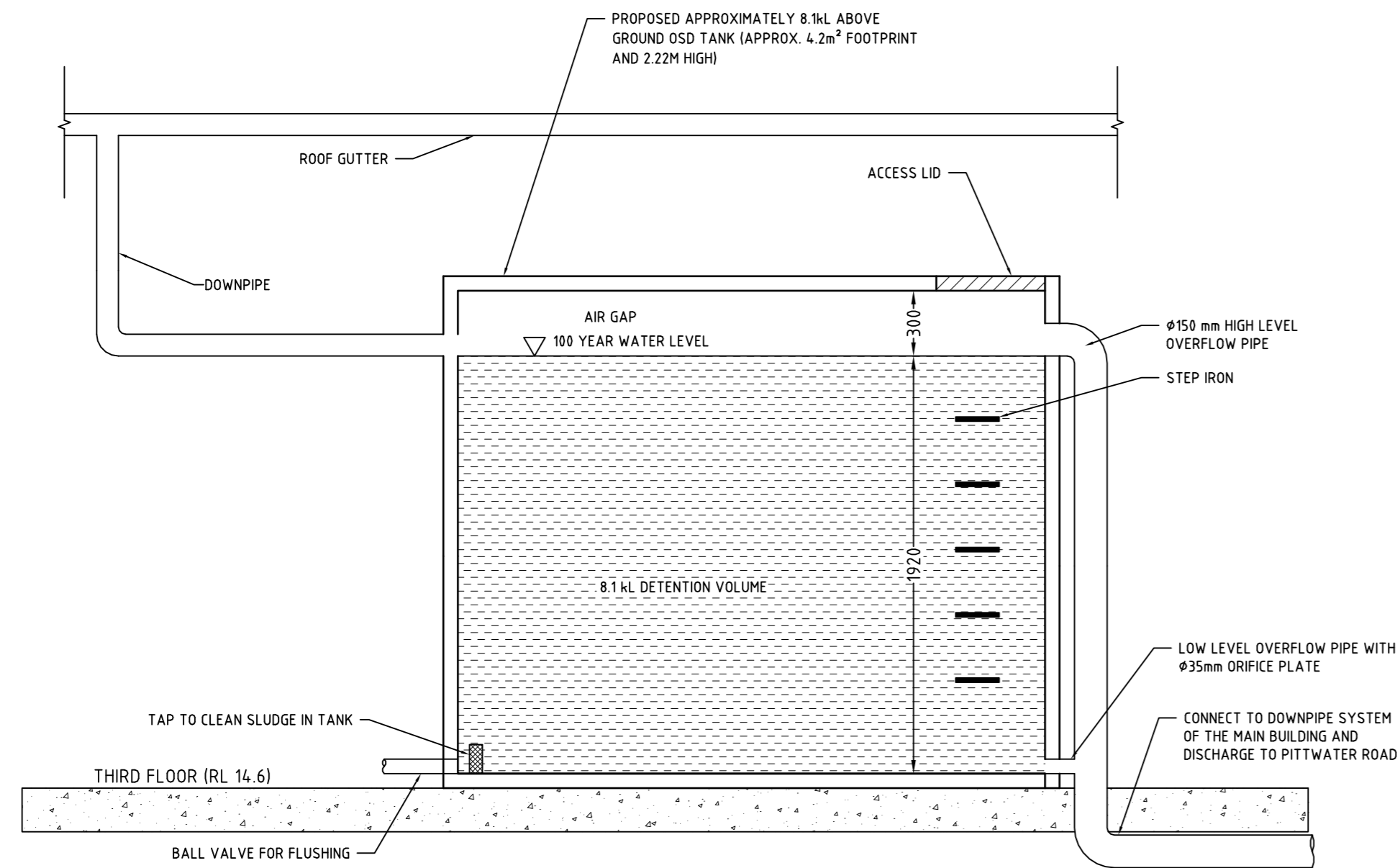
PIPE FLOW DIRECTION

SURFACE FLOW DIRECTION

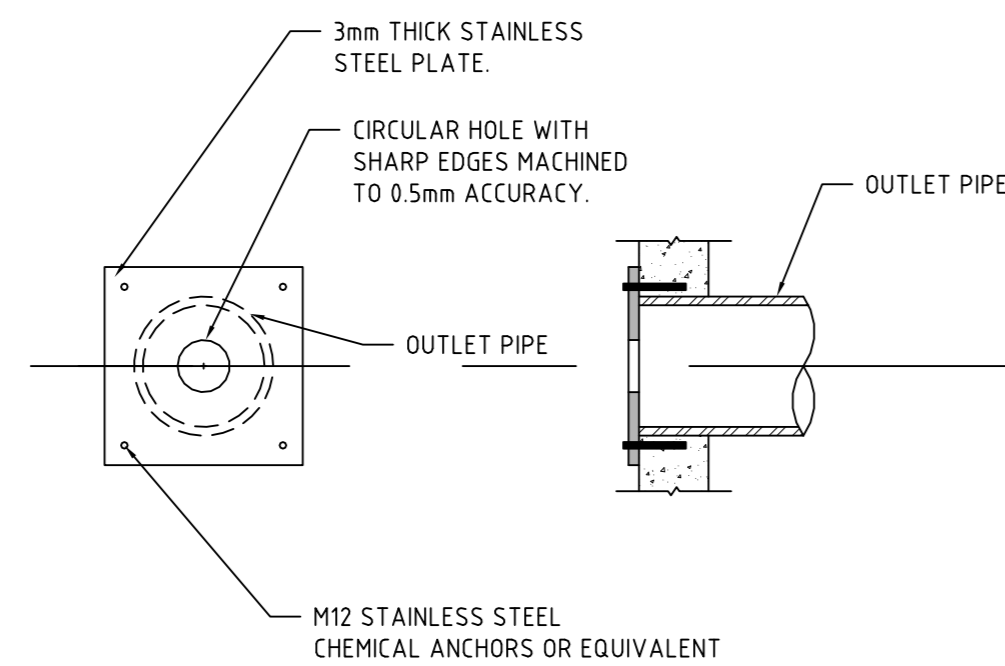
SITE BOUNDARY

DEVELOPMENT APPLICATION - NOT FOR CONSTRUCTION

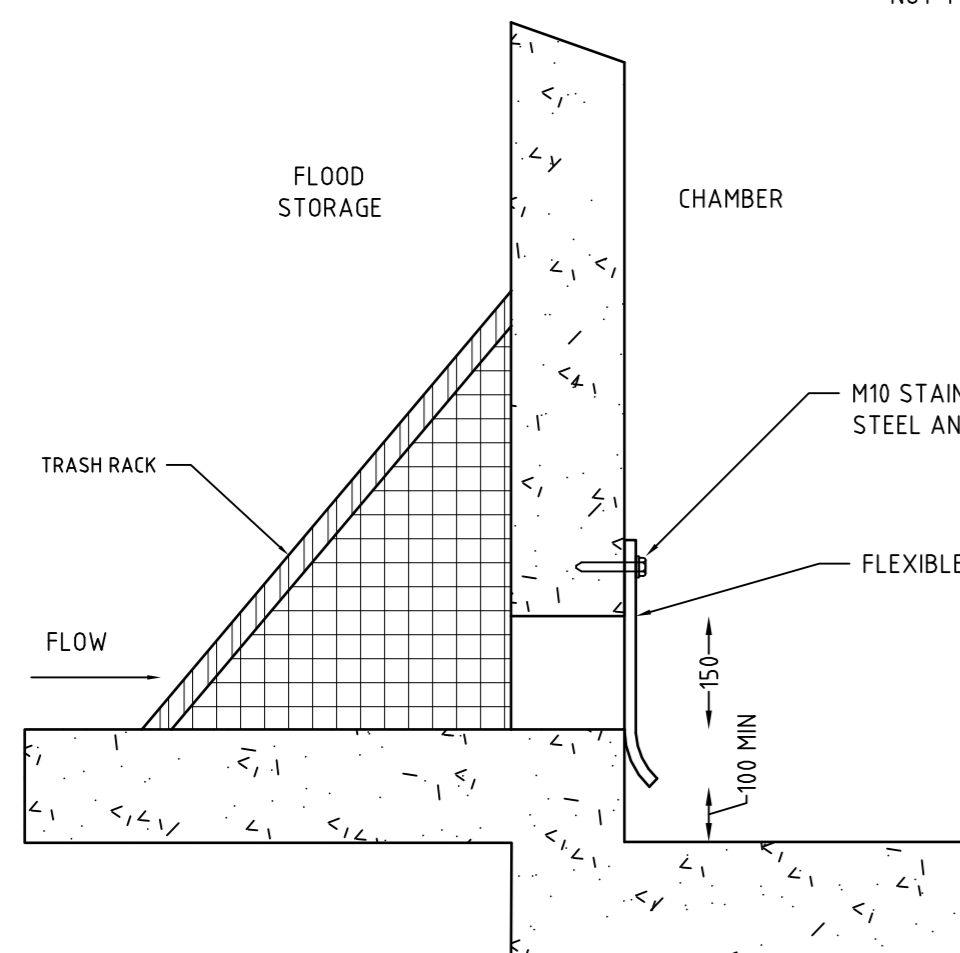
REV	DESCRIPTION	DATE	DRAWN	DESIGNED	CHECKED	APPRVD	SCALE	GRID	DATUM	PROJECT MANAGER	CLIENT	DRAWING TITLE			
A	INITIAL RELEASE	30/03/2020	JS	SS	SL	TH	A1 (A3) 1:100 (1:200)	MGA	mAHD	TH	LOTUS PROJECT MANAGEMENT PTY LTD	DRAINAGE PLAN ROOF PLAN			
								DISCLAIMER & COPYRIGHT				PROJECT NAME/PLANSET TITLE			
								This plan must not be used for construction unless signed as approved by principal certifying authority.				SHOP TOP HOUSING DEVELOPMENT CONCEPT STORMWATER DRAINAGE PLAN			
								All measurements in millimetres unless otherwise specified.				1129-1131 PITTWATER ROAD, COLLAROY, NSW, 2097 LOT 4 DP 7445 AND LOT 1 DP 859613			
								(C) Copyright Martens & Associates Pty Ltd				martens & Associates Pty Ltd			
												Consulting Engineers Environment Water Geotechnical Civil			
												Suite 201, 20 George St, Hornsby, NSW 2077 Australia Phone: (02) 9476 9999 Fax: (02) 9476 8767 Email: mail@martens.com.au Internet: www.martens.com.au			
												PROJECT NO. PLANSET NO. RELEASE NO. DRAWING NO. REVISION			
												P1907336 PS03 R04 PS03-E101 A			



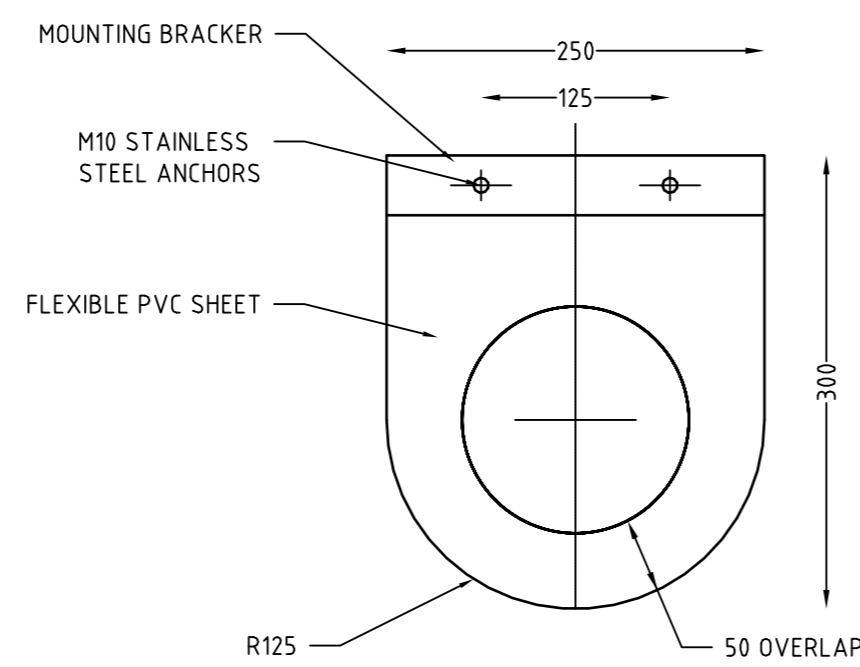
ABOVE GROUND OSD CONFIGURATION
(SCHEMATIC DIAGRAM ONLY)
NOT TO SCALE



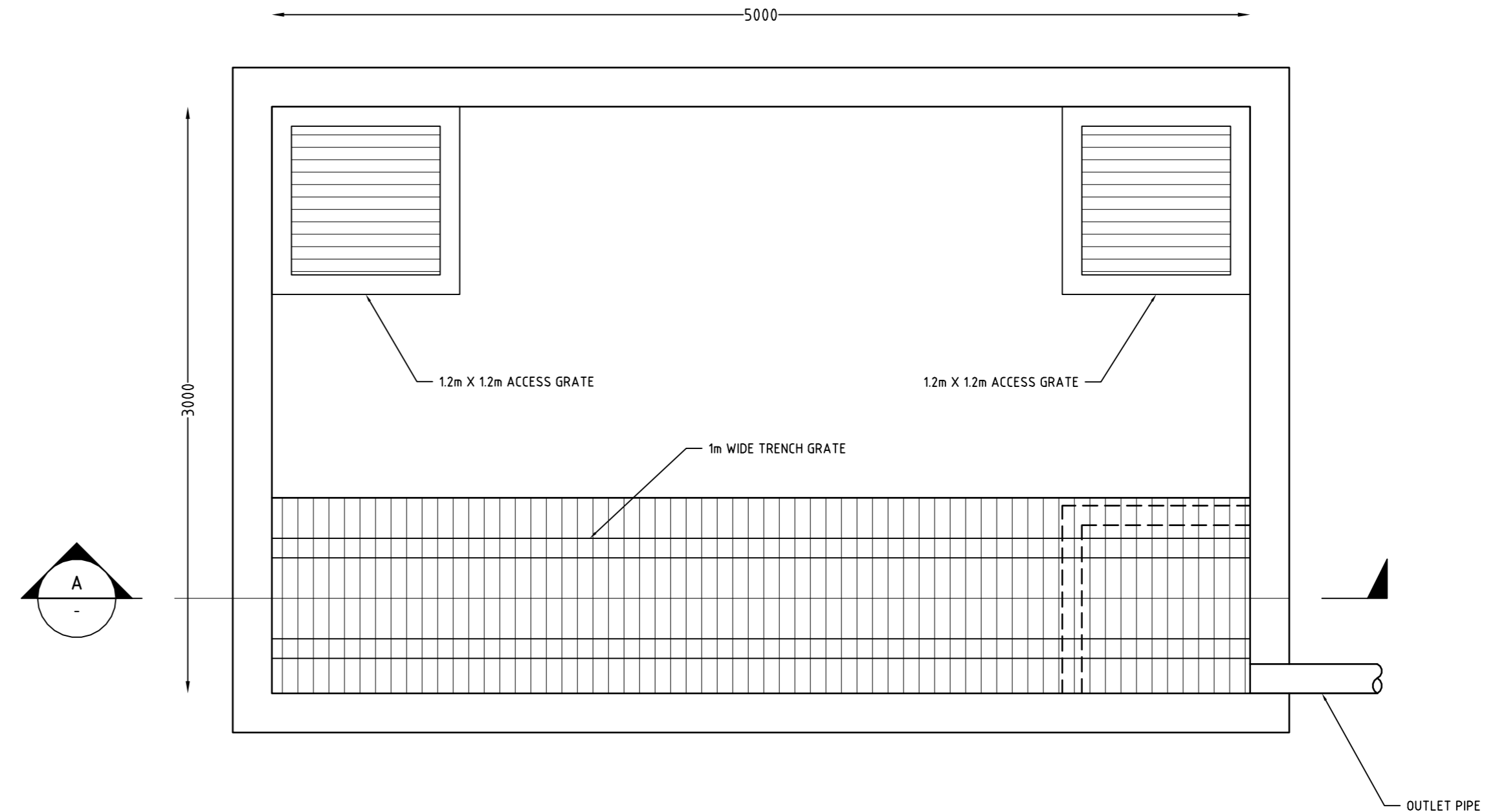
ORIFICE PLATE DETAIL
NOT TO SCALE



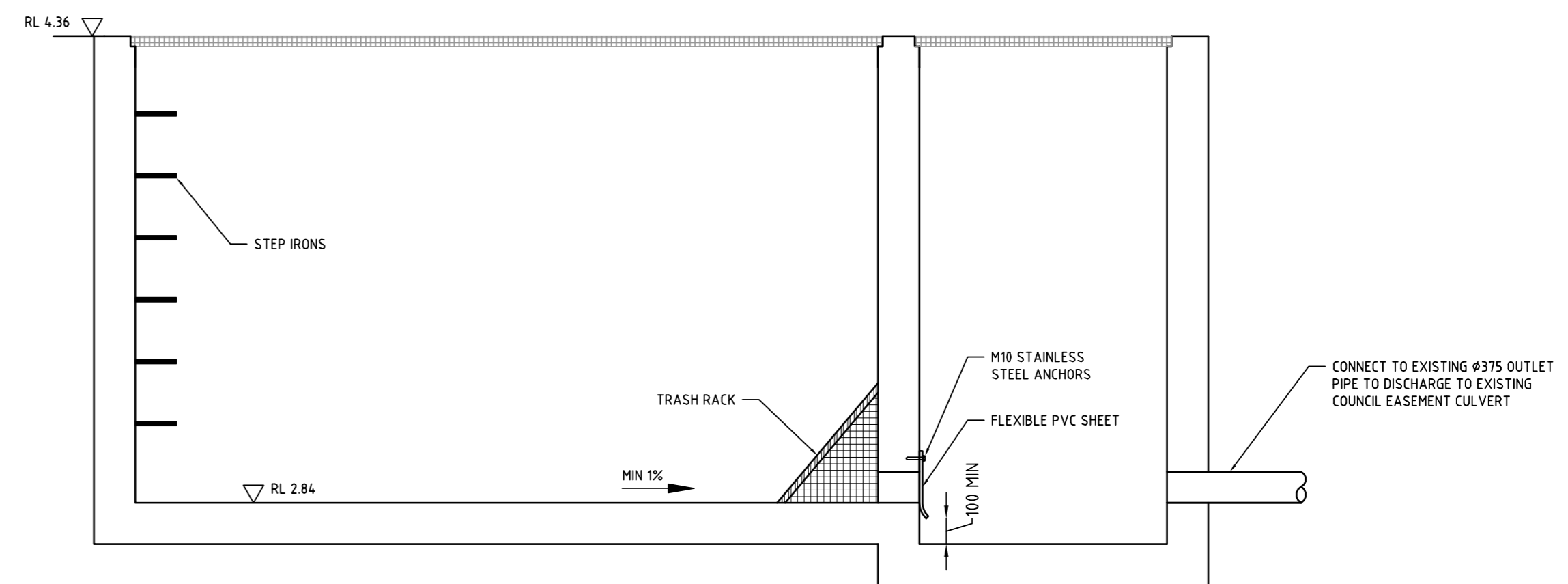
NON-RETURN FLAP MOUNTING
NOT TO SCALE



NON-RETURN FLAP MIN DIMENSIONS
NOT TO SCALE



FLOOD MITIGATION TANK (SCHEMATIC) PLAN
NOT TO SCALE



FLOOD MITIGATION TANK (SECTION A-A)
NOT TO SCALE

DEVELOPMENT APPLICATION - NOT FOR CONSTRUCTION

REV	DESCRIPTION	DATE	DRAWN	DESIGNED	CHECKED	APPRVD	SCALE
C	MINOR AMENDMENT	28/10/2020	JS	SL	SL	TH	
B	MINOR AMENDMENT	31/03/2020	JS	SS	SL	TH	
A	INITIAL RELEASE	26/09/2019	LL	SS	SL	AN	

GRID	DATUM	PROJECT MANAGER
TH		
DISCLAIMER & COPYRIGHT		
This plan must not be used for construction unless signed as approved by principal certifying authority.		
All measurements in millimetres unless otherwise specified.		
This drawing must not be reproduced in whole or part without prior written consent of Martens & Associates Pty Ltd.		
(C) Copyright Martens & Associates Pty Ltd		

CLIENT
LOTUS PROJECT MANAGEMENT PTY LTD
PROJECT NAME/PLANSET TITLE
SHOP TOP HOUSING DEVELOPMENT CONCEPT STORMWATER DRAINAGE PLAN
1129-1131 PITTWATER ROAD, COLLAROY, NSW, 2097 LOT 4 DP 7445 AND LOT 1 DP 859613

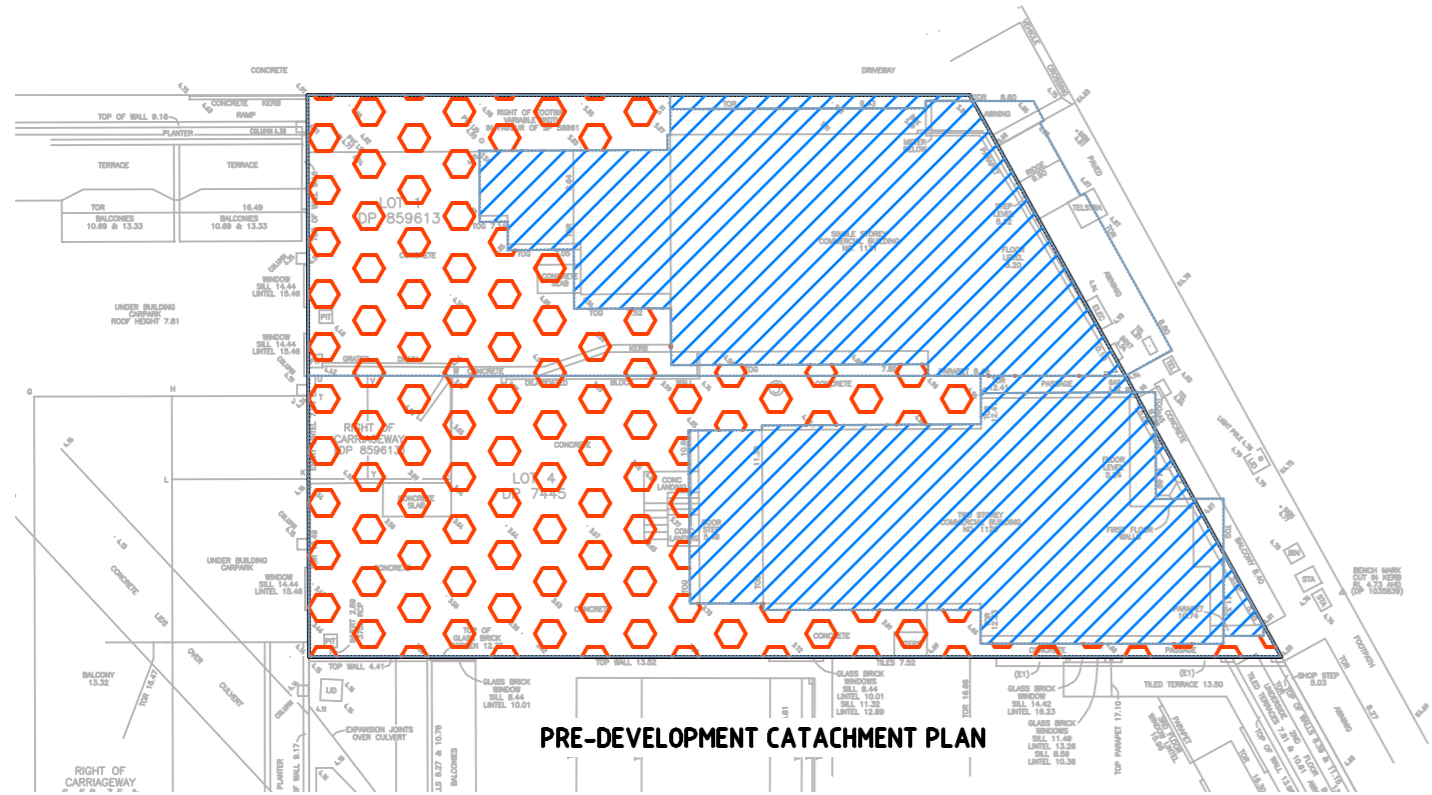


Suite 201, 20 George St, Hornsby, NSW 2077 Australia	Phone: (02) 9476 9999	Fax: (02) 9476 8767
Email: mail@martens.com.au	Internet: www.martens.com.au	

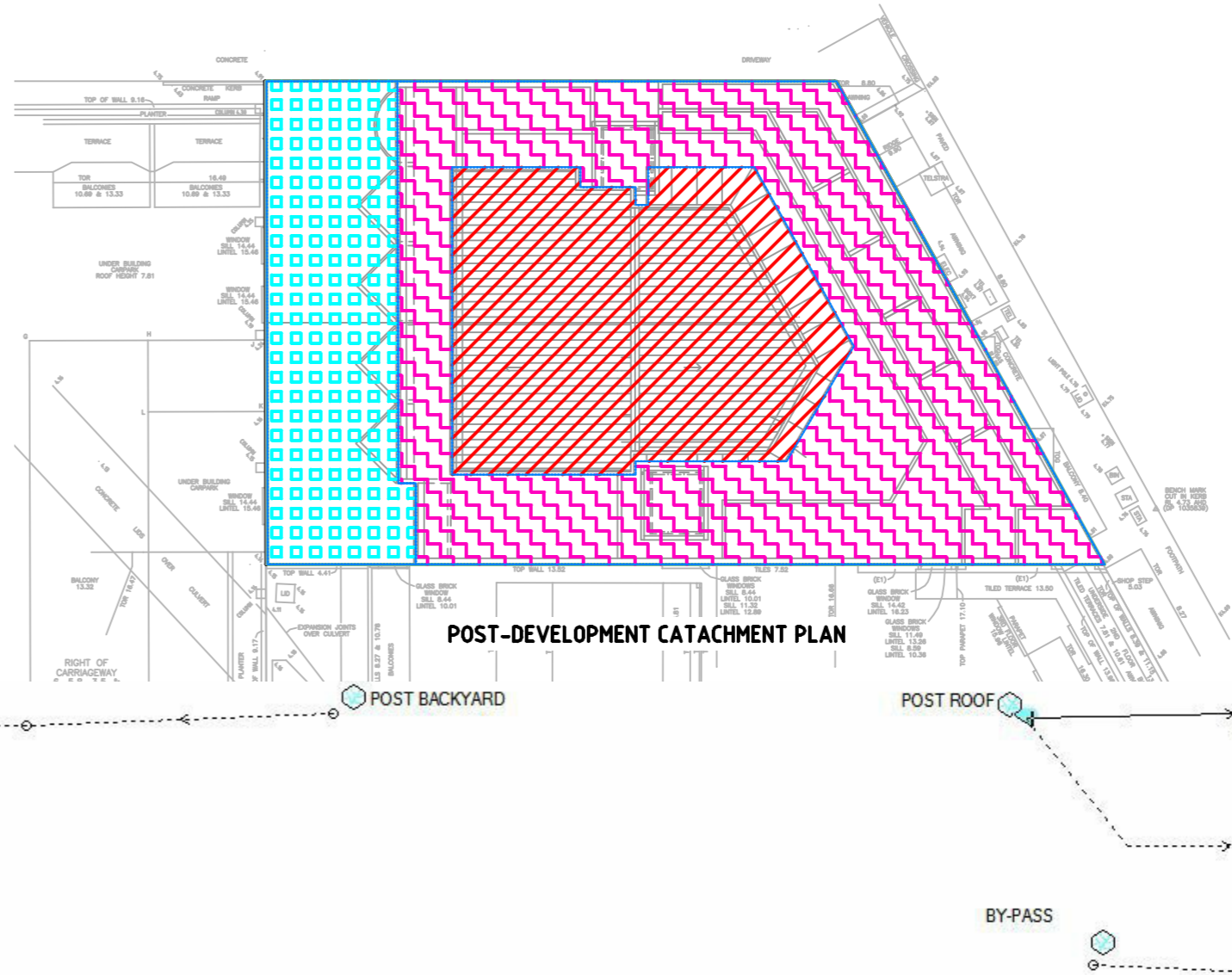
Consulting Engineers
Environment
Water
Geotechnical
Civil

DRAWING TITLE				
OSD/RAINWATER TANK DETAILS				
PROJECT NO.	PLANSET NO.	RELEASE NO.	DRAWING NO.	REVISION
P1907336	PS03	R04	PS03-E200	C

DRAWING ID: P1907336-PS03-R04-E200



EXISTING CATCHMENTS (P1907336DRN02V07)				
KEY		DRAINS NODE	AREA (ha)	% PAVED
	ROOF	PRE ROOF	0.0423	100%
		IMPERVIOUS AREA	0.0423	= 100% OF TOTAL AREA
		PERVIOUS AREA	0.0000	= 0% OF TOTAL AREA
	BACKYARD	PRE BACKYARD	0.0391	100%
		IMPERVIOUS AREA	0.0391	= 100% OF TOTAL AREA
		PERVIOUS AREA	0.0000	= 0% OF TOTAL AREA
		TOTAL AREA	0.0814	



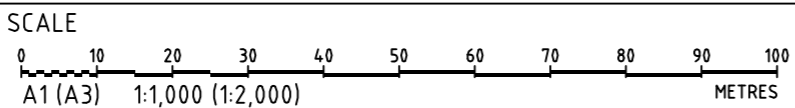
PROPOSED CATCHMENTS (P1907336DRN02V07)				
KEY		DRAINS NODE	AREA (ha)	% PAVED
	ROOF	POST ROOF	0.0255	100
		POST ROOF BYPASS	0.0398	
		TOTAL ROOF AREA	0.0653	= 100% OF TOTAL AREA
	BACKYARD	POST BACKYARD	0.0161	100
		TOTAL PYPASS AREA	0.0161	= 100% OF TOTAL AREA
		IMPERVIOUS AREA	0.0161	= 100% OF TOTAL AREA
		PERVIOUS AREA	0.0000	= 0% OF TOTAL AREA
		TOTAL AREA	0.0814	

DRAINS OSD MODELLING RESULTS

MODEL NAME:		P1907336DRN02V07	
BACKYARD DRAINING TO THE COUNCIL DRAINAGE EASEMENT			
STORM EVENT×	Pre	Post	Difference
0.2 EY	0.016	0.007	-0.009
10% AEP	0.019	0.008	-0.011
5% AEP	0.021	0.005	-0.016
2% AEP	0.025	0.010	-0.015
1% AEP	0.028	0.012	-0.016
× based on critical storm duration of 5 minutes.			
ROOF DRAINING TO PITTWATER ROAD			
STORM EVENT×	Pre	Post	Difference
0.2 EY	0.018	0.018	0.000
10% AEP	0.020	0.020	0.000
5% AEP	0.023	0.023	0.000
2% AEP	0.027	0.027	0.000
1% AEP	0.030	0.030	0.000
× based on critical storm duration of 5 minutes.			

DEVELOPMENT APPLICATION - NOT FOR CONSTRUCTION

REV	DESCRIPTION	DATE	DRAWN	DESIGNED	CHECKED	APPRVD
B	MINOR AMENDMENT	31/03/2020	JS	SS	SL	TH
A	INITIAL RELEASE	26/09/2019	LL	SS	SL	AN



GRID	DATUM	PROJECT MANAGER
MGA	mAHD	TH
DISCLAIMER & COPYRIGHT		
This plan must not be used for construction unless signed as approved by principal certifying authority.		
All measurements in millimetres unless otherwise specified.		
This drawing must not be reproduced in whole or part without prior written consent of Martens & Associates Pty Ltd.		
(C) Copyright Martens & Associates Pty Ltd		

CLIENT
LOTUS PROJECT MANAGEMENT PTY LTD
PROJECT NAME/PLANSET TITLE
SHOP TOP HOUSING DEVELOPMENT CONCEPT STORMWATER DRAINAGE PLAN
1129-1131 PITTWATER ROAD, COLLAROY, NSW, 2097 LOT 4 DP 7445 AND LOT 1 DP 859613



Suite 201, 20 George St, Hornsby, NSW 2077 Australia Phone: (02) 9476 9999 Fax: (02) 9476 8767
Email: mail@martens.com.au Internet: www.martens.com.au

Consulting Engineers
Environment
Water
Geotechnical
Civil

DRAWING TITLE				
OSD CATCHMENT PLANS & RESULTS				
PROJECT NO.	PLANSET NO.	RELEASE NO.	DRAWING NO.	REVISION
P1907336	PS03	R04	PS03-E600	B

DRAWING ID: P1907336-PS03-R04-E600