

Schedule 11 - Suggested Checklist for Preliminary Assessment of Site Conditions in relation to the preparation of Site Stability Reports

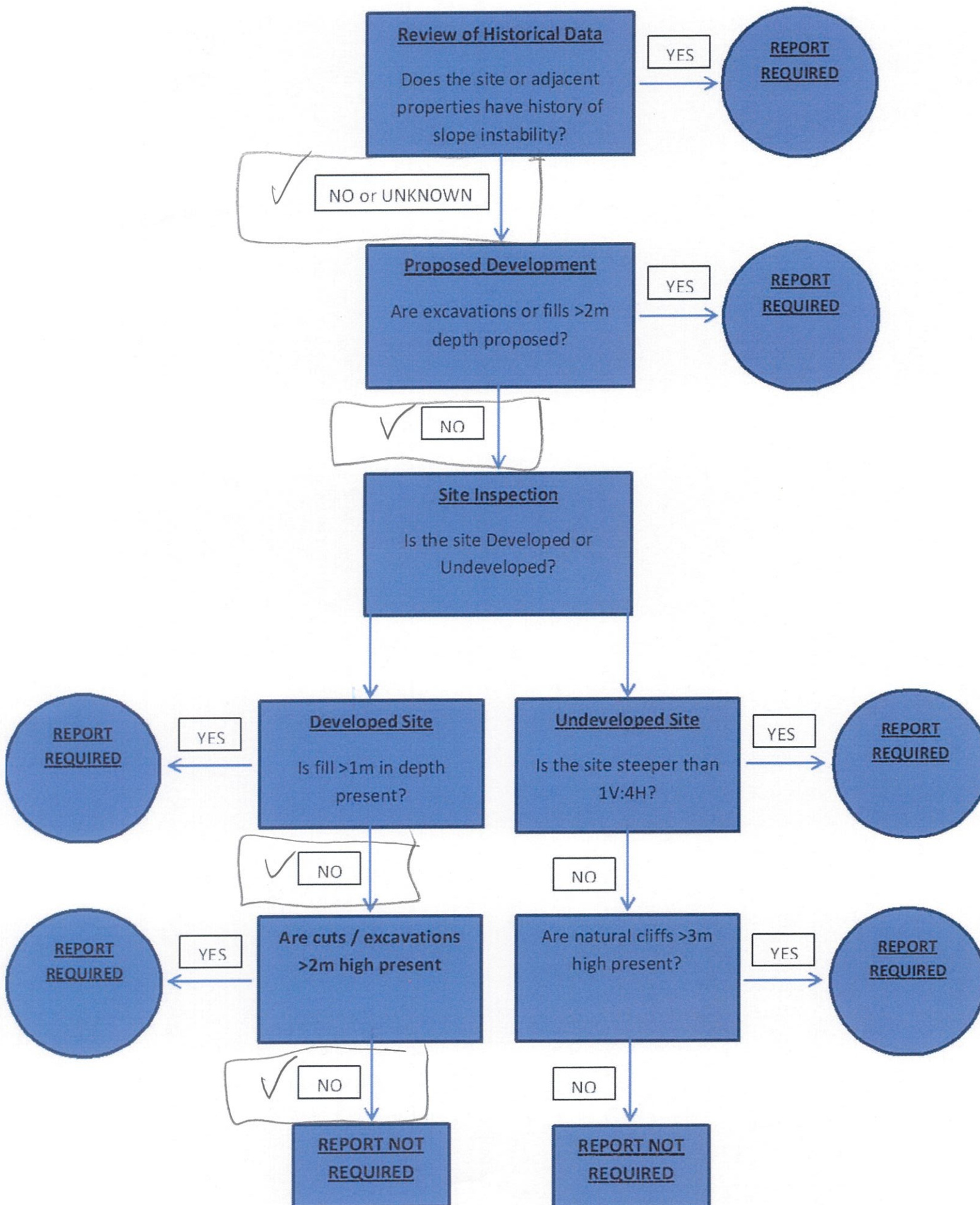
1. Site Location (Street and Position in street - above or below; Site dimensions - block shape & size):
2. Geotechnical Area in which the site is located):
3. Proposed development (general description, including maximum excavation depths, maximum fill depths, and proximity to existing structures):
4. Existing site: description eg. topography, slope angles (in degrees), exposures of rock and soil, existing site development, evidence of possible slope instability):
5. Recommendations: based on the above items, and the flowchart below that indicates the principal factor(s) considered in the assessment, it is recommended that:

- geotechnical assessment is required; or
- geotechnical assessment is not required.
- other comments:

DATE OF ASSESSMENT :

ASSESSMENT BY :

CHECKLIST FOR COUNCIL'S ASSESSMENT OF SITE CONDITIONS AND NEED FOR GEOTECHNICAL REPORT IN GEOTECHNICAL CLASS B AND D



MATT DAY ARCHITECT