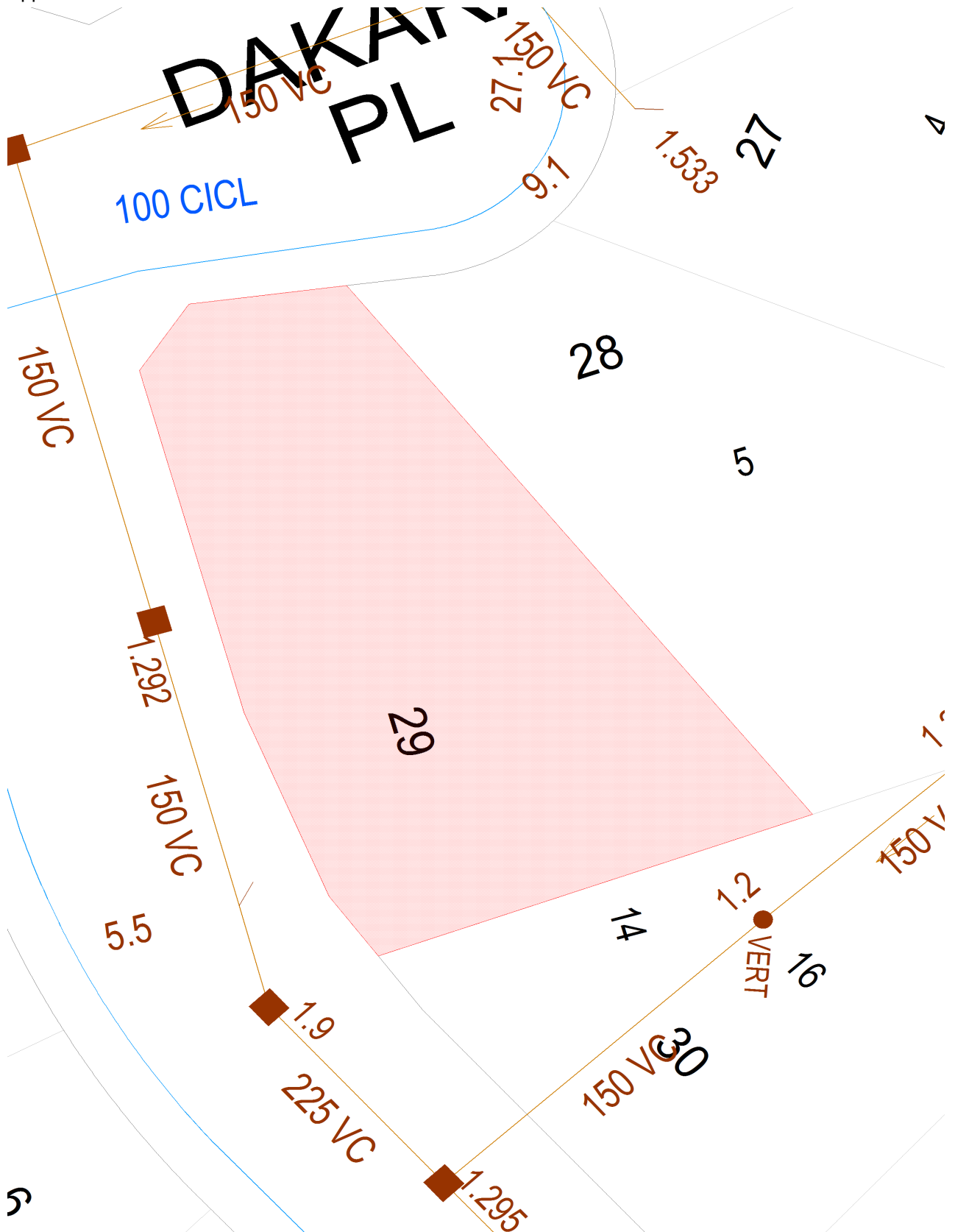


# Service Location Print

Application Number: 954600

Application Number: 954600



Document generated at 10-09-2020 09:35:10 AM

## Disclaimer

**Disclaimer**  
The information on this print shows if we provide any water, wastewater or stormwater services to this property. It may not be accurate or to scale. If you'd like to see the location of private wastewater pipes on the property, please buy a **Sewer service diagram**.

# Asset Information

## Legend

Sewer		Property Details	
Sewer Main (with flow arrow & size type text)		Boundary Line	
Disused Main		Easement Line	
Rising Main		House Number	
Maintenance Hole (with upstream depth to invert)		Lot Number	
Sub-surface chamber		Proposed Land	
Maintenance Hole with Overflow chamber		Sydney Water Heritage Site (please call 132 092 and ask for the Heritage Unit)	
Ventshaft EDUCT			
Ventshaft INDUCT			
Property Connection Point (with chainage to downstream MH)			
Concrete Encased Section			
Terminal Maintenance Shaft			
Maintenance Shaft			
Rodding Point			
Lamphole			
Vertical			
Pumping Station			
Sewer Rehabilitation			
Pressure Sewer		Water	
Pressure Sewer Main		WaterMain - Potable (with size type text)	
Pump Unit (Alarm, Electrical Cable, Pump Unit)		Disconnected Main - Potable	
Property Valve Boundary Assembly		Proposed Main - Potable	
Stop Valve		Water Main - Recycled	
Reducer / Taper		Special Supply Conditions - Potable	
Flushing Point		Special Supply Conditions - Recycled	
		Restrained Joints - Potable	
		Restrained Joints - Recycled	
		Hydrant	
		Maintenance Hole	
		Stop Valve	
		Stop Valve with By-pass	
		Stop Valve with Tapers	
		Closed Stop Valve	
		Air Valve	
		Valve	
		Scour	
		Reducer / Taper	
		Vertical Bends	
		Reservoir	
		Recycled Water is shown as per Potable above. Colour as indicated	
Vacuum Sewer		Private Mains	
Pressure Sewer Main		Potable Water Main	
Division Valve		Recycled Water Main	
Vacuum Chamber		Sewer Main	
Clean Out Point		Symbols for Private Mains shown grey	
Stormwater			
Stormwater Pipe			
Stormwater Channel			
Stormwater Gully			
Stormwater Maintenance Hole			

### Disclaimer

The information on this print shows if we provide any water, wastewater or stormwater services to this property. It may not be accurate or to scale. If you'd like to see the location of private wastewater pipes on the property, please buy a **Sewer service diagram**.

## Pipe Types

<b>ABS</b>	Acrylonitrile Butadiene Styrene	<b>AC</b>	Asbestos Cement
<b>BRICK</b>	Brick	<b>CI</b>	Cast Iron
<b>CICL</b>	Cast Iron Cement Lined	<b>CONC</b>	Concrete
<b>COPPER</b>	Copper	<b>DI</b>	Ductile Iron
<b>DICL</b>	Ductile Iron Cement (mortar) Lined	<b>DIPL</b>	Ductile Iron Polymeric Lined
<b>EW</b>	Earthenware	<b>FIBG</b>	Fibreglass
<b>FL BAR</b>	Forged Locking Bar	<b>GI</b>	Galvanised Iron
<b>GRP</b>	Glass Reinforced Plastics	<b>HDPE</b>	High Density Polyethylene
<b>MS</b>	Mild Steel	<b>MSCL</b>	Mild Steel Cement Lined
<b>PE</b>	Polyethylene	<b>PC</b>	Polymer Concrete
<b>PP</b>	Polypropylene	<b>PVC</b>	Polyvinylchloride
<b>PVC - M</b>	Polyvinylchloride, Modified	<b>PVC - O</b>	Polyvinylchloride, Oriented
<b>PVC - U</b>	Polyvinylchloride, Unplasticised	<b>RC</b>	Reinforced Concrete
<b>RC-PL</b>	Reinforced Concrete Plastics Lined	<b>S</b>	Steel
<b>SCL</b>	Steel Cement (mortar) Lined	<b>SCL IBL</b>	Steel Cement Lined Internal Bitumen Lined
<b>SGW</b>	Salt Glazed Ware	<b>SPL</b>	Steel Polymeric Lined
<b>SS</b>	Stainless Steel	<b>STONE</b>	Stone
<b>VC</b>	Vitrified Clay	<b>WI</b>	Wrought Iron
<b>WS</b>	Woodstave		

## Further Information

Please consult the Dial Before You Dig enquiries page on the Sydney Water website.

**For general enquiries please call the Customer Contact Centre on 132 092**

**In an emergency, or to notify Sydney Water of damage or threats to its structures, call 13 20 90 (24 hours, 7 days)**

### Disclaimer

The information on this print shows if we provide any water, wastewater or stormwater services to this property. It may not be accurate or to scale. If you'd like to see the location of private wastewater pipes on the property, please buy a **Sewer service diagram**.