

ANGELA STEYN & Co

PO Box 4027
Mosman NSW 2088
Sydney
m: 0438 380 977

A3 page

Copyright Angela Steyn & Co ©2019

drawn:
Andre Steyn BArch

Date:
20-06-2019

CAUTION: When printing PDF drawings, always ensure that "automatic page scaling" is turned off on your printer. Set your printer's print scale to 100%; 50% or 200% etc, depending on your paper size and your desired scale. Always check measure the printed drawing against the bar scale provided. Scale from the drawing at your own risk - dimensions take precedence over the drawing. If a mistake is evident, kindly contact the author of the drawing. Dimensions shown are approximate measurements only and are rounded up or down. Suppliers shall rely on their own site check measures for pricing.

New residence to replace existing cottage: DA

Roof Plan

Lewis/Wells

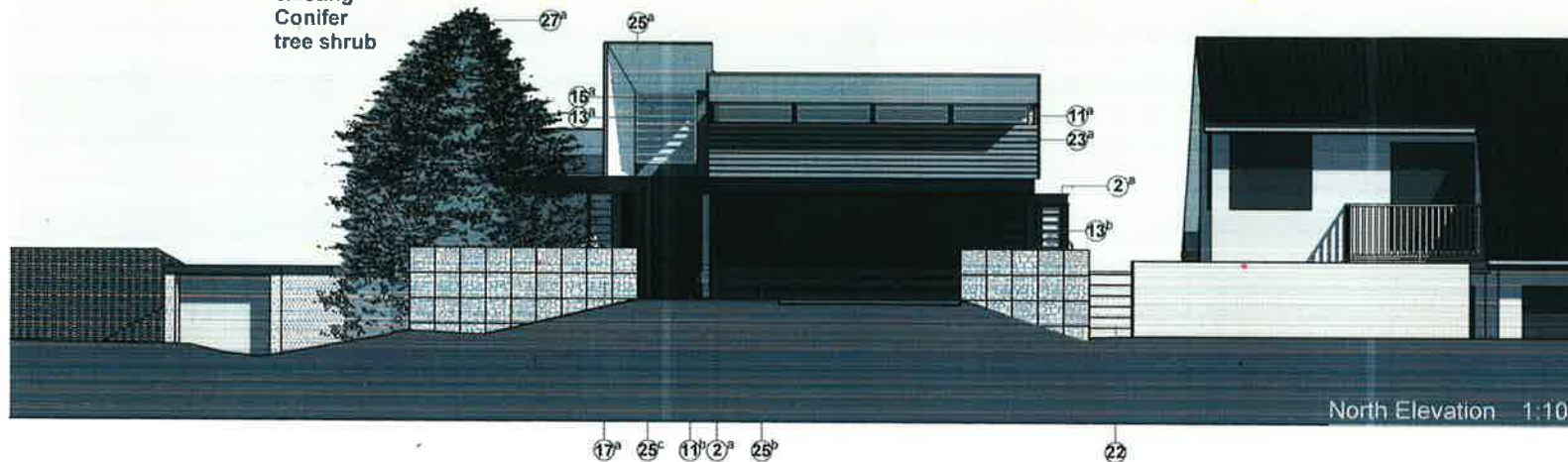
139 Headland Road
North Curl Curl
NSW 2099

DA-PLA000

Status Revision

prelim J

Note:
retain
existing
Conifer
tree shrub



- ① Concrete (cast in situ);
a: natural rough off-shutter finish
- ② Steel H-section frame
a: painted colour = dark grey
b: painted colour = white
c: galvanised grey
- ③ Facebrick
a: colour = dark grey
- ④ Smooth plastered brickwork
a: painted colour = white
b: painted colour = dark grey
- ⑤ Fibre cement shiplap siding;
a: colour = dark grey
b: colour = light grey
- ⑥ Hardwood timber shiplap siding;
a: colour = natural silver-grey
- ⑦ Metal sheet standing seam roofing;
a: colour = zinc
- ⑧ Aluminium half-round rainwater gutters
a: pre-painted colour = dark grey

- ⑨ PVC 100mm diam rainwater downpipes;
a: painted colour = white
b: painted colour = dark grey
- ⑩ Aluminium fixed horizontal shade louvre;
a: colour = white
b: colour = dark grey
- ⑪ Aluminium door & window frames;
a: frame colour = white
b: frame colour = dark grey
- ⑫ Glass
a: clear
b: opaque
- ⑬ Aluminium louvre window frame
a: colour = white
b: colour = dark grey
- ⑭ Aluminium (opening) louvres
a: colour = white
b: colour = dark grey

- ⑮ Motorized louvres
a: clear glass
b: opaque glass
- ⑯ Aluminium pergola by Vergola
a: pre-painted colour = white
- ⑰ Natural rock gabion wall;
a: 500x500x500 stainless steel cages;
Frameless glass movable wall; 'ALLVU' by Hufcor
a: clear tempered 12mm safety glass stacking panels;
Frameless glass balcony balustrading min 1.0m high;
clear 12mm tempered safety glass
stainless steel bottom channel & stainless steel top
- ⑱ Frameless glass pool fencing min 1.2m high;
clear 12mm tempered safety glass
stainless steel bottom channel & stainless steel top
- ⑲ Hardwood timber screen
a: finish = natural silver grey
b: frosted glass panels

- ⑳ Hardwood timber garden gate
a: finish = natural silver grey
- ㉑ Hardwood timber decking
a: finish = natural silver grey
- ㉒ steel gas fireplace flue
a: finish = pre-painted charcoal grey
- ㉓ Painted elements
a: colour = white
b: colour = dark grey
c: colour = light grey
- ㉔ Natural stone cladding
a: colour = natural sandstone
- ㉕ existing plants
a: trees
b: shrubs & bushes
new screen plants
a: trees
b: shrubs & bushes
- ㉖ Garden walls & balustrades
a: natural hardwood timber sleepers

ANGELA STEYN & Co

PO Box 4027
Mosman NSW 2088
Sydney
m: 0438 380 977

drawn:
Andre Steyn BArch

Date:
20-06-2019

CAUTION: When printing PDF drawings, always ensure that 'automatic page scaling' is turned off on your printer. Set your printer's print scale to 100%; 50% or 200% etc, depending on your paper size and your desired scale. Always check measure the printed drawing against the bar scale provided. Scale from the drawing at your own risk - dimensions take precedence over the drawing. If a mistake is evident, kindly contact the author of the drawing. Dimensions shown are approximate measurements only and are rounded up or down. Suppliers shall rely on their own site check measures for pricing.

A3 page

Copyright: Angela Steyn & Co ©2019

New residence to replace existing cottage: DA

NORTH ELEVATION

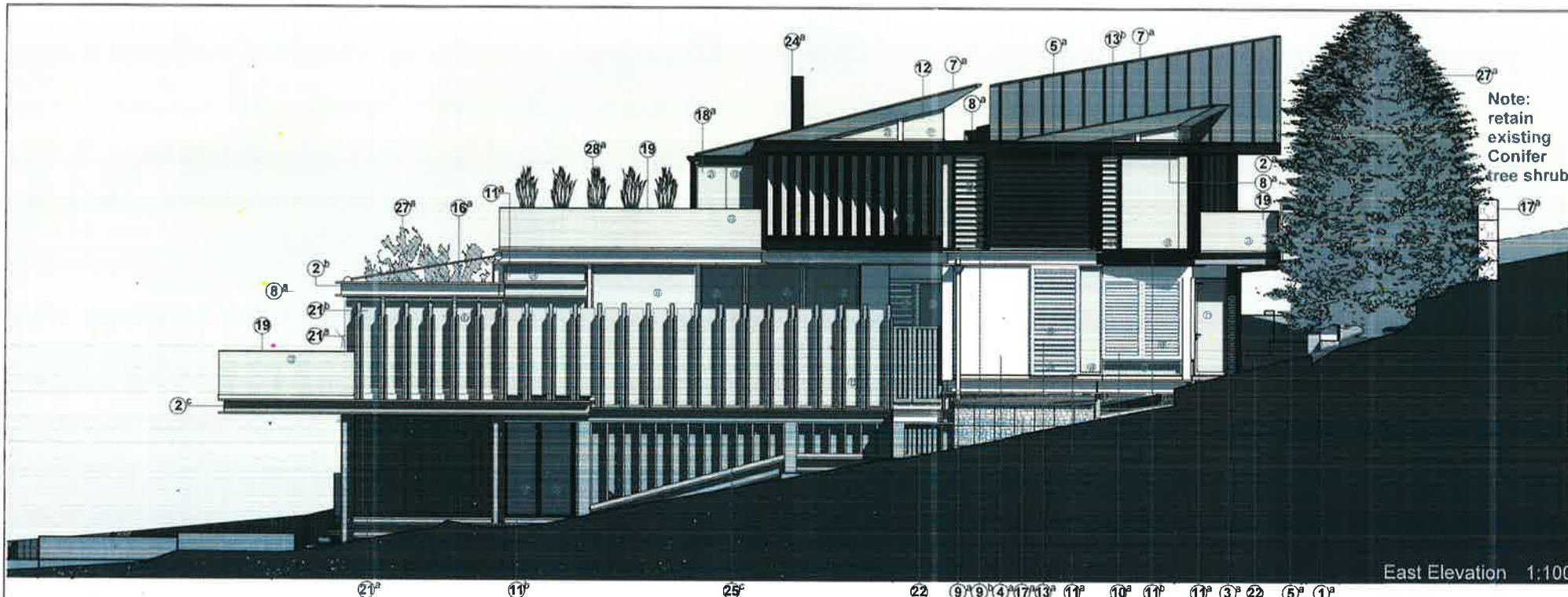
Lewis/Wells

139 Headland Road
North Curl Curl
NSW 2099

DA-ELE001

Status Revision

prelim J



Note:
retain
existing
Conifer
tree shrub

East Elevation 1:100

- | | | | |
|---|---|---|---|
| <p>① Concrete (cast in situ);
a: natural rough off-shutter finish</p> <p>② Steel H-section frame
a: painted colour = dark grey
b: painted colour = white
c: galvanised grey</p> <p>③ Facebrick
a: colour = dark grey</p> <p>④ Smooth plastered brickwork
a: painted colour = white
b: painted colour = dark grey</p> <p>⑤ Fibre cement shiplap siding;
a: colour = dark grey
b: colour = light grey</p> <p>⑥ Hardwood timber shiplap siding;
a: colour = natural silver-grey</p> <p>⑦ Metal sheet standing seam roofing;
a: colour = zinc</p> <p>⑧ Aluminium half-round rainwater gutters
a: pre-painted colour = dark grey</p> | <p>⑨ PVC 100mm diam rainwater downpipes;
a: painted colour = white
b: painted colour = dark grey</p> <p>⑩ Aluminium fixed horizontal shade louvre;
a: colour = white
b: colour = dark grey</p> <p>⑪ Aluminium door & window frames;
a: frame colour = white
b: frame colour = dark grey</p> <p>⑫ Glass
a: clear
b: opaque</p> <p>⑬ Aluminium louvre window frame
a: colour = white
b: colour = dark grey</p> <p>⑭ Aluminium (opening) louvres
a: colour = white
b: colour = dark grey</p> | <p>⑮ Motorized louvres
a: clear glass
b: opaque glass</p> <p>⑯ Aluminium pergola by Vergola
auto/manual motorized fins
a: pre-painted colour = white</p> <p>⑰ Natural rock gabion wall;
a: 500x500x500 stainless steel cages;
Frameless glass movable wall; 'ALLVU' by Hufcor
a: clear tempered 12mm safety glass stacking panels;
Frameless glass balcony balustrading min 1.0m high;
clear 12mm tempered safety glass</p> <p>⑱ stainless steel bottom channel & stainless steel top
Frameless glass pool fencing min 1.2m high;
clear 12mm tempered safety glass
stainless steel bottom channel & stainless steel top</p> <p>⑲ Hardwood timber screen
a: finish = natural silver grey
b: frosted glass panels</p> | <p>⑳ Hardwood timber garden gate
a: finish = natural silver grey</p> <p>㉑ Hardwood timber decking
a: finish = natural silver grey</p> <p>㉒ steel gas fireplace flue
a: finish = pre-painted charcoal grey</p> <p>㉓ Painted elements
a: colour = white
b: colour = dark grey
c: colour = light grey</p> <p>㉔ Natural stone cladding
a: colour = natural sandstone</p> <p>㉕ existing plants
a: trees
b: shrubs & bushes
new screen plants
a: trees
b: shrubs & bushes</p> <p>㉖ Garden walls & balustrades
a: natural hardwood timber sleepers</p> |
|---|---|---|---|

ANGELA STEYN & Co

PO Box 4027
Mosman NSW 2088
Sydney
m: 0438 380 977

drawn:
Andre Steyn BArch

Date:
20-06-2019

CAUTION : When printing PDF drawings, always ensure that 'automatic page scaling' is turned off on your printer. Set your printer's print scale to 100%; 50% or 200% etc, depending on your paper size and your desired scale. Always check measure the printed drawing against the bar scale provided. Scale from the drawing at your own risk - dimensions take precedence over the drawing. If a mistake is evident, kindly contact the author of the drawing. Dimensions shown are approximate measurements only and are rounded up or down. Suppliers shall rely on their own site check measures for pricing.

Lewis/Wells

139 Headland Road
North Curl Curl
NSW 2099

Status Revision

DA-ELE002

prelim J

A3 page

Copyright Angela Steyn & Co ©2019

New residence to replace existing cottage: DA

EAST ELEVATION

Note:
retain
existing
8m tree

Note:
retain
existing
Conifer
tree shrub



South Elevation 1:100

- | | | | |
|---|---|---|--|
| ① Concrete (cast in situ);
a: natural rough off-shutter finish | ⑨ PVC 100mm diam rainwater downpipes;
a: painted colour = white
b: painted colour = dark grey | ⑮ Motorized louvres
a: clear glass
b: opaque glass | ⑳ Hardwood timber garden gate
a: finish = natural silver grey |
| ② Steel H-section frame
a: painted colour = dark grey
b: painted colour = white
c: galvanised grey | ⑩ Aluminium fixed horizontal shade louvre;
a: colour = white
b: colour = dark grey | ⑯ Aluminium pergola by Vergola
auto/manual motorized fins
a: pre-painted colour = white | ㉑ Hardwood timber decking
a: finish = natural silver grey |
| ③ Facebrick
a: colour = dark grey | ⑪ Aluminium door & window frames;
a: frame colour = white
b: frame colour = dark grey | ⑰ Natural rock gabion wall;
a: 500x500x500 stainless steel cages;
Frameless glass movable wall; 'ALLVU' by Hufcor | ㉒ steel gas fireplace flue
a: finish = pre-painted charcoal grey |
| ④ Smooth plastered brickwork
a: painted colour = white
b: painted colour = dark grey | ⑫ Glass
a: clear
b: opaque | ⑱ Frameless glass balcony balustrading min 1.0m high;
clear 12mm tempered safety glass | ㉓ Painted elements
a: colour = white
b: colour = dark grey
c: colour = light grey |
| ⑤ Fibre cement shiplap siding;
a: colour = dark grey
b: colour = light grey | ⑬ Aluminium louvre window frame
a: colour = white
b: colour = dark grey | ㉔ Frameless glass pool fencing min 1.2m high;
clear 12mm tempered safety glass | ㉔ Natural stone cladding
a: colour = natural sandstone |
| ⑥ Hardwood timber shiplap siding;
a: colour = natural silver-grey | ⑭ Aluminium (opening) louvres
a: colour = white
b: colour = dark grey | ㉕ stainless steel bottom channel & stainless steel top | ㉕ existing plants
a: trees
b: shrubs & bushes |
| ⑦ Metal sheet standing seam roofing;
a: colour = zinc | | ㉖ Hardwood timber screen
a: finish = natural silver grey
b: frosted glass panels | ㉖ new screen plants
a: trees
b: shrubs & bushes |
| ⑧ Aluminium half-round rainwater gutters
a: pre-painted colour = dark grey | | | ㉖ Garden walls & balustrades
a: natural hardwood timber sleepers |

ANGELA STEYN & Co

PO Box 4027
Mosman NSW 2088
Sydney
m: 0438 380 977

drawn:
Andre Steyn BArch

Date:
20-06-2019

CAUTION: When printing PDF drawings, always ensure that "automatic page scaling" is turned off on your printer. Set your printer's print scale to 100%; 50% or 200% etc, depending on your paper size and your desired scale. Always check measure the printed drawing against the bar scale provided. Scale from the drawing at your own risk - dimensions take precedence over the drawing. If a mistake is evident, kindly contact the author of the drawing. Dimensions shown are approximate measurements only and are rounded up or down. Suppliers shall rely on their own site check measures for pricing.

Lewis/Wells

139 Headland Road
North Curl Curl
NSW 2099

Status Revision

DA-ELE003

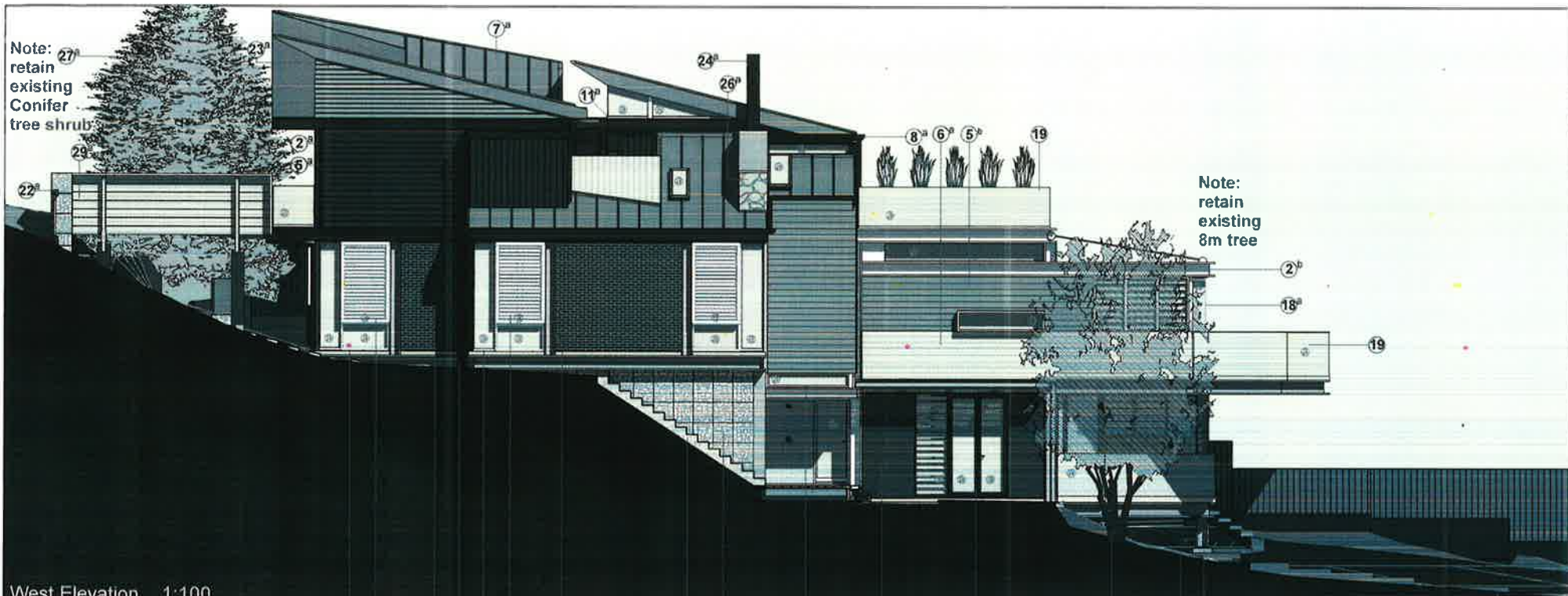
prelim J

A3 page

Copyright Angela Steyn & Co ©2019

New residence to replace existing cottage: DA

SOUTH ELEVATION



West Elevation 1:100

- | | | | |
|---|---|---|--|
| ① Concrete (cast in situ);
a: natural rough off-shutter finish | ⑨ PVC 100mm diam rainwater downpipes;
a: painted colour = white
b: painted colour = dark grey | ⑮ Motorized louvres
a: clear glass
b: opaque glass | ⑲ Hardwood timber garden gate
a: finish = natural silver grey
Hardwood timber decking
a: finish = natural silver grey |
| ② Steel H-section frame
a: painted colour = dark grey
b: painted colour = white
c: galvanised grey | ⑩ Aluminium fixed horizontal shade louvre;
a: colour = white
b: colour = dark grey | ⑯ Aluminium pergola by Vergola
auto/manual motorized fins
a: pre-painted colour = white | ⑳ Steel gas fireplace flue
a: finish = pre-painted charcoal grey
Painted elements
a: colour = white
b: colour = dark grey
c: colour = light grey |
| ③ Facebrick
a: colour = dark grey | ⑪ Aluminium door & window frames;
a: frame colour = white
b: frame colour = dark grey | ⑰ Natural rock gabion wall;
a: 500x500x500 stainless steel cages;
Frameless glass movable wall; 'ALLVU' by Hufcor | ㉑ Natural stone cladding
a: colour = natural sandstone
existing plants
a: trees
b: shrubs & bushes
new screen plants
a: trees
b: shrubs & bushes
Garden walls & balustrades
a: natural hardwood timber sleepers |
| ④ Smooth plastered brickwork
a: painted colour = white
b: painted colour = dark grey | ⑫ Glass
a: clear
b: opaque | ⑱ Frameless glass balcony balustrading min 1.0m high;
clear 12mm tempered safety glass
stainless steel bottom channel & stainless steel top | |
| ⑤ Fibre cement shiplap siding;
a: colour = dark grey
b: colour = light grey | ⑬ Aluminium louvre window frame
a: colour = white
b: colour = dark grey | ㉒ Frameless glass pool fencing min 1.2m high;
clear 12mm tempered safety glass
stainless steel bottom channel & stainless steel top | |
| ⑥ Hardwood timber shiplap siding;
a: colour = natural silver-grey | ⑭ Aluminium (opening) louvres
a: colour = white
b: colour = dark grey | ㉓ Hardwood timber screen
a: finish = natural silver grey
b: frosted glass panels | |
| ⑦ Metal sheet standing seam roofing;
a: colour = zinc | | | |
| ⑧ Aluminium half-round rainwater gutters
a: pre-painted colour = dark grey | | | |

ANGELA STEYN & Co

PO Box 4027
Mosman NSW 2088
Sydney
m: 0438 380 977

drawn:
Andre Steyn BArch

Date:
20-06-2019

CAUTION: When printing PDF drawings, always ensure that "automatic page scaling" is turned off on your printer. Set your printer's print scale to 100%; 50% or 200% etc, depending on your paper size and your desired scale. Always check measure the printed drawing against the bar scale provided. Scale from the drawing at your own risk - dimensions take precedence over the drawing. If a mistake is evident, kindly contact the author of the drawing. Dimensions shown are approximate measurements only and are rounded up or down. Suppliers shall rely on their own site check measures for pricing.

Lewis/Wells

139 Headland Road
North Curl Curl
NSW 2099

Status Revision

A3 page

New residence to replace existing cottage: DA

WEST ELEVATION

DA-ELE004

prelim J