

# List of Abbreviations

1 : 50

AFFL	Above finished floor level
AL	Aluminium
AS	Adjustable shelf
AW	Aluminium window
BAL	Balustrade
BALC	Balcony
BLWK	Blockwork
BWF	Blockwork faced
BS	Bath spout
BSN	Basin
BWBP	blockwork bagged and painted
COB	Cobblestone
COF	Concrete - off form
CPS	Concrete - polished and sealed
CST	Concrete - steel trowel finish
CONC	Concrete
COS	Check on site
CCTV	Closed circuit TV
CFC	Compressed fibre cement
CHS	Circular hollow section
COL	Column
CPD	Cupboard
CPT	Carpet
CR	Cement render
CT	Ceramic tile
CTP	Cooktop
DP	Downpipe
DPC	Damp proof course
DRY	Dryer
DR	Drawer
DW	Dishwasher
EDB	Electrical switch board
EQ	Equal
EX	Existing
F	Fridge
FC	Fibrous cement sheet
FCL	Finished ceiling level
FFL	Finished floor level
FGL	Finished ground level
FP	Fixed panel
FW	Floor waste
G	Glass/ Glazing
GBL	Glass balustrade
GL	Glass louvre
GO	Glass obscure
GALV.	Galvanized
GD	Grated drain
GPO	General purpose outlet
HR	Hanging rail
HT	Hose tap
HTR	Heated towel rack
HWU	Hot water unit
LAM	Laminate
LV	Louvre
MB	Metal Balustrade
MDF	Medium density fibre
MI	Mirror
MPBR	Membrane pebble ballast roof
MR	Metal roof
MSB	Main switch board
MS	Metal sheeting
MT	Mosaic tile
MW	Microwave
MX	Mixer
Ø	Diameter
OF	Overflow
OS	Open shelf
PAV	Paving
PB	Plasterboard
PBFR	Plasterboard fire-resistant 90/90/90
PBM	Plasterboard moisture resistant
PPAV	Pervious paving
PLY	Plywood
PNT	Paint
PU	Polyurethane
PV	Photovoltaic panels
RA	Return outlet
RC	Reinforced concrete
RH	Range hood
RHS	Rectangular hollow section
RL	Reduced level
RWH	Rainwater head
RWO	Rainwater outlet
SED	Structural engineers details
SD	Smoke detector
SH	Shutters
SHA	Shutters automated
SHR	Shower
SK	Skirting
SL	Skylight
SP	Set plaster
SPM	Set plaster moisture resistant
SS	Stainless steel
ST	Stone
STL	Steel
T	Timber
TB	Timber battens
TF	Timber frame
TFB	Timber floorboards
THR	Timber handrail
TOF	Top of fence
TOW	Top of wall
TRH	Toilet roll holder
TR	Tiled roof
TS	Timber screen
US	Underside
VN	Veneer timber
WB	Weatherboards
WC	Water closet
WM	Washing machine
WPM	Waterproof membrane
WTX	Compressed hardwood cladding



Sheet List	
Sheet Name	Sheet Number
Cover Sheet	MOD100
Site	MOD101
Ground Floor level	MOD102
First Floor level	MOD103
Entry level	MOD104
North South Elevation	MOD105
East Elevations	MOD106
West Elevations	MOD107
Sections	MOD108
Sections Driveway	MOD109
Shadow diagrams 9am 21st June	MOD110
Shadow diagrams 12pm 21st June	MOD111
Shadow diagrams 3pm 21st June	MOD112
Sediment and Erosion	MOD113
Window and Door schedule P1	MOD114
Window and Door schedule P2	MOD115
Window and Door schedule P3	MOD116
Window and Door schedule P4	MOD117

## basix commitments

### THERMAL COMFORT SPECIFICATION 120 PRINCE ALFRED PARADE NEWPORT

Rev B 08/02/2022

**External Walls**  
270 cavity brickwork rendered both sides, light coloured with 25 mm foil faced PIR board to the inside face of cavity.

Dark coloured FC cladding on battens with breathable membrane to stud framed walls with R2.5 batts, 110 mm thick brick plasterboard internally

100 concrete lined internally with plasterboard to walls of top level clerestorey

Render to 190 blockwork to lift core at top level

**Internal walls**  
110,230 and 270 brickwork plasterboard internally  
Plasterboard lined stud walls where cavity sliding doors occur  
190 blockwork plasterboard lined one side to lift core

**Roof**  
Concrete, medium coloured – tiled, soil or with pebble ballast on WPM with R3.0 insulation above slab  
Dark coloured metal roofing on battens on breathable membrane R4 batts

**Ceilings**  
Plasterboard

**Floors**  
Concrete either bare, tiled or with carpet to bedrooms and media room.

**Windows & Glazed doors**  
All glazed hinged doors, casement or awning windows – equivalent to aluminium framed with single glazed with high solar gain Low E clear glazing  
- U value < 5.4 SHGC = 0.49 (+10%)

All other glazed doors and windows - equivalent to aluminium framed with single glazed high solar gain Low E clear glazing  
- U value < 5.4 SHGC = 0.59 (+10%)

All external doors and windows to be fitted with draught excluding weather stripping and dark coloured framing

**General**  
Insulation, services and sealing of the building to be in accordance with BCA NSW 3.12  
All downlights to be sealed or IC rated or fitted with covers  
All exhaust fans to be sealed or fitted with dampers and max. 180 mm. dia.  
Thermal comfort rating has been done with assumptions in regard to ceiling penetrations and it may need to be revised when final lighting layouts are available to confirm compliance with BCA 12.1.2(e)

**BASIX REQUIREMENTS**  
Landscaping to include min. 100 m<sup>2</sup> of low water use or native endemic planting  
10,000 l rainwater tank connected to garden and top up for pool  
Electric heat pump hot water system – 25-30 STC  
Pool to be 51 m<sup>3</sup> maximum with electric heat pump heating to pool and spa.  
Pool to be fitted with covers.  
2.2 kW PV system

### THERMAL COMFORT SPECIFICATION 120A PRINCE ALFRED PARADE NEWPORT

Rev A 30/11/2021

**External Walls**  
270 cavity brick work rendered both sides, light coloured with 25 mm foil faced PIR board to the inside face of cavity.

Dark coloured FC cladding on battens with breathable membrane to stud framed walls with R2.5 batts, 110 mm thick brick plasterboard internally

100 concrete lined internally with plasterboard to walls of top level clerestorey

Stone facing to 190 blockwork 25mmPIRboard fixed internally to lift core to all levels

**Internal walls**  
110,230 and 270 brickwork plasterboard internally  
Plasterboard lined stud walls where cavity sliding doors occur  
190 blockwork plasterboard lined one side to lift core

**Roof**  
Concrete, medium coloured – tiled, soil or with pebble ballast on WPM with R3.5 insulation above slab  
Medium coloured metal roofing on battens on breathable membrane R4 batts

**Ceilings**  
Plasterboard

**Floors**  
Concrete either bare, tiled or with carpet to bedrooms and media room.

**Windows & Glazed doors**  
All windows and glazed doors to Gym on ground floor and all windows to top floor clerestorey - equivalent to aluminium framed with double glazed high solar gain Low E clear glazing  
- U value < 4.3 SHGC = 0.53 (+10%)

All glazed hinged doors, casement or awning windows - equivalent to aluminium framed with single glazed with high solar gain Low E clear glazing  
- U value < 5.4 SHGC = 0.49 (+10%)

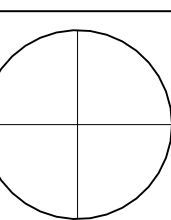
All other glazed doors and windows - equivalent to aluminium framed with single glazed high solar gain Low E clear glazing  
- U value < 5.4 SHGC = 0.59 (+10%)

All external doors and windows to be fitted with draught excluding weather stripping and dark coloured framing

**Skylights**  
All skylights equivalent to aluminium framed double glazed U < 4.0 SHGC < 0.72.

**General**  
Insulation, services and sealing of the building to be in accordance with BCA NSW 3.12  
All downlights to be sealed or IC rated or fitted with covers  
All exhaust fans to be sealed or fitted with dampers and max. 180 mm. dia.  
Thermal comfort rating has been done with assumptions in regard to ceiling penetrations and it may need to be revised when final lighting layouts are available to confirm compliance with BCA 12.1.2(e)

**BASIX REQUIREMENTS**  
Landscaping to include min. 100 m<sup>2</sup> of low water use or native endemic planting  
10,000 l rainwater tank connected to garden and top up for pool  
Electric heat pump – 26-30 STC  
Pool to be 47 m<sup>3</sup> maximum with electric heat pump heating to pool and spa. Pool to be fitted with cover.  
2.1 kW PV system



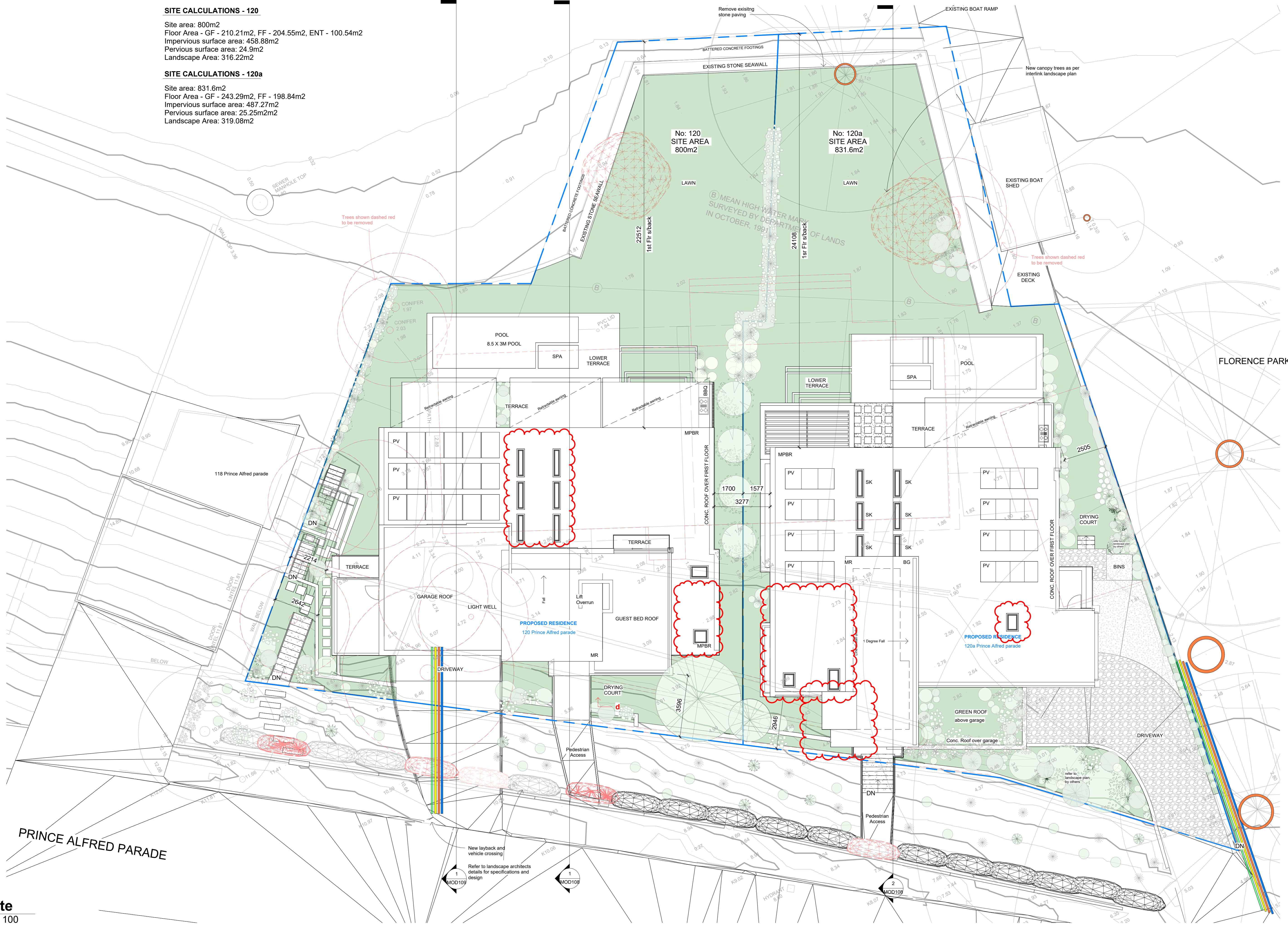


**SITE CALCULATIONS - 120**

Site area: 800m<sup>2</sup>  
 Floor Area - GF - 210.21m<sup>2</sup>, FF - 204.55m<sup>2</sup>, ENT - 100.54m<sup>2</sup>  
 Impervious surface area: 458.88m<sup>2</sup>  
 Pervious surface area: 24.9m<sup>2</sup>  
 Landscape Area: 316.22m<sup>2</sup>

**SITE CALCULATIONS - 120a**

Site area: 831.6m<sup>2</sup>  
 Floor Area - GF - 243.29m<sup>2</sup>, FF - 198.84m<sup>2</sup>  
 Impervious surface area: 487.27m<sup>2</sup>  
 Pervious surface area: 25.25m<sup>2</sup>  
 Landscape Area: 319.08m<sup>2</sup>



**1 Site**  
1 : 100

New layback and vehicle crossing  
 Refer to landscape architects details for specifications and design  
 MOD109



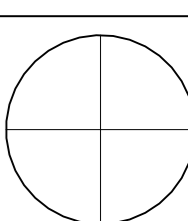
ARCLAB PTY LTD  
 A.C.N. 16472762  
 PO Box 1239 Newport Beach  
 NSW 2108 Australia  
 Telephone +61 418 886 537  
 email: arclab@arclab.com.au  
 www.arclab.com.au

Sheet Title  
 Site  
 Project Address  
 120, 120a PRINCE ALFRED PARADE NEWPORT

Client  
 BFRD No: 1 PTY. LTD.  
 Documentation  
 Modification to consent

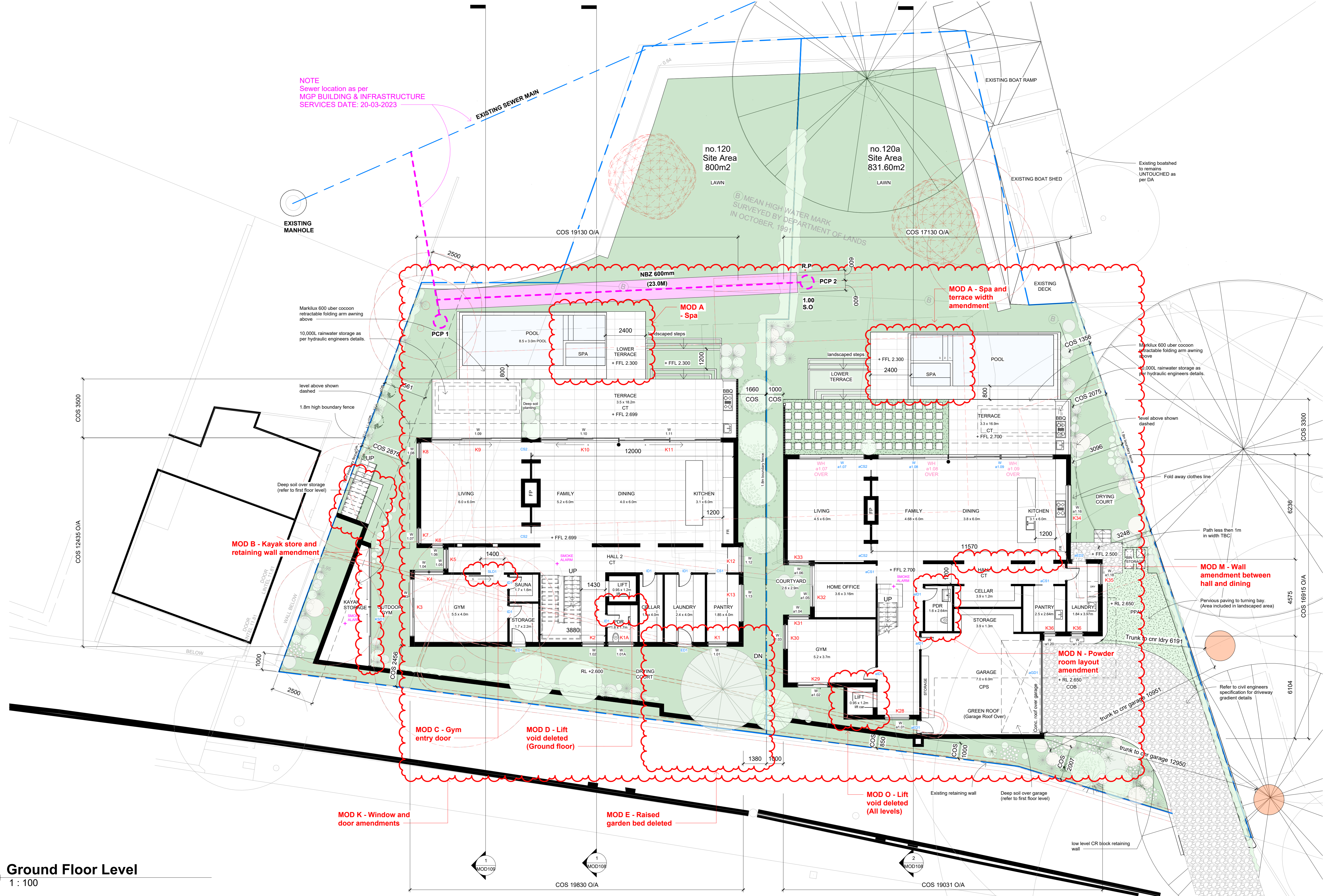
All works to be in accordance with Australian Standards, The Building Code of Australia, other relevant codes, and with Manufacturers' recommendations and instructions. Do not scale from drawings.  
 Verify all dimensions on site prior to construction. The drawing is copyright and may not be used without written consent from ARCLAB PTY LTD.

Drawn	Scale	Sheet	Date	Job N°	Sheet N°	Issue/Revision
MJC	1 : 100	A 3	14/06/24	*	MOD101	MOD A - 14/06/24





NOTE  
Sewer location as per  
MGP BUILDING & INFRASTRUCTURE  
SERVICES DATE: 20-03-2023



**1 Ground Floor Level**  
1 : 100



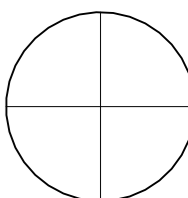
ARCLAB PTY LTD  
A.C.N. 148472762  
PO Box 1239 Newport Beach  
NSW 2108 Australia  
Telephone +61 418 886 537  
email: arclab@arclab.com.au  
www.arclab.com.au

Sheet Title  
Ground Floor level  
Project Address  
120, 120a PRINCE ALFRED  
PARADE NEWPORT

Client  
BFRD No: 1 PTY. LTD.  
Documentation  
Modification to consent

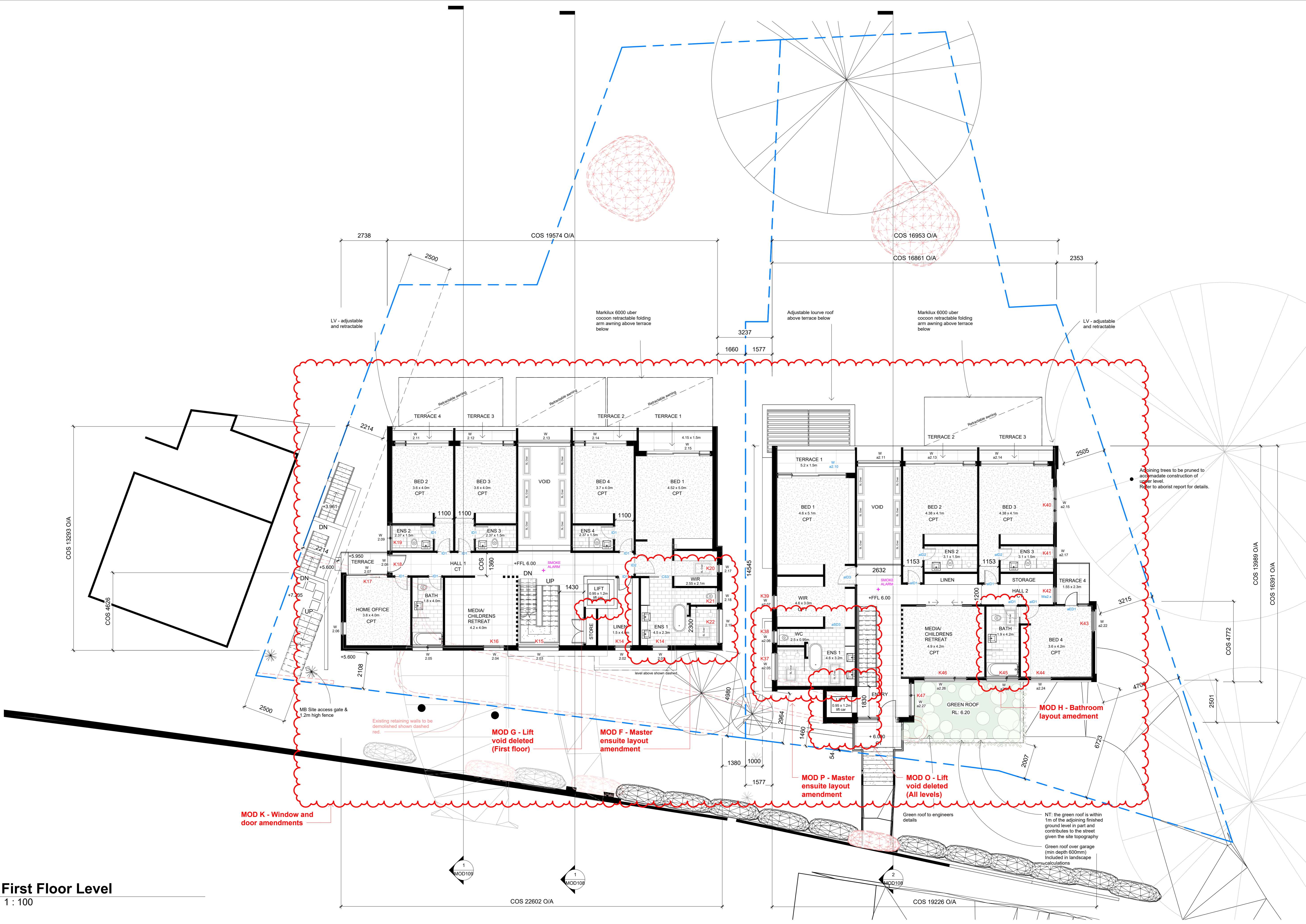
All works to be in accordance with Australian Standards, The Building Code of Australia, other relevant codes, and with Manufacturers' recommendations and instructions. Do not scale from drawings.  
Verify all dimensions on site prior to construction.  
The drawing is copyright and may not be used without written consent from ARCLAB PTY LTD.

Drawn	Scale	Sheet	Date	Job N°.	Sheet N°	Issue/Revision
MJC	1 : 100	A3	14/06/24	*	MOD102	MOD A - 14/06/24





**1 First Floor Level**  
1 : 100



MOD K - Window and door amendments

MOD G - Lift void deleted (First floor)

MOD F - Master ensuite layout amendment

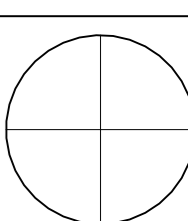
MOD P - Master ensuite layout amendment

MOD O - Lift void deleted (All levels)

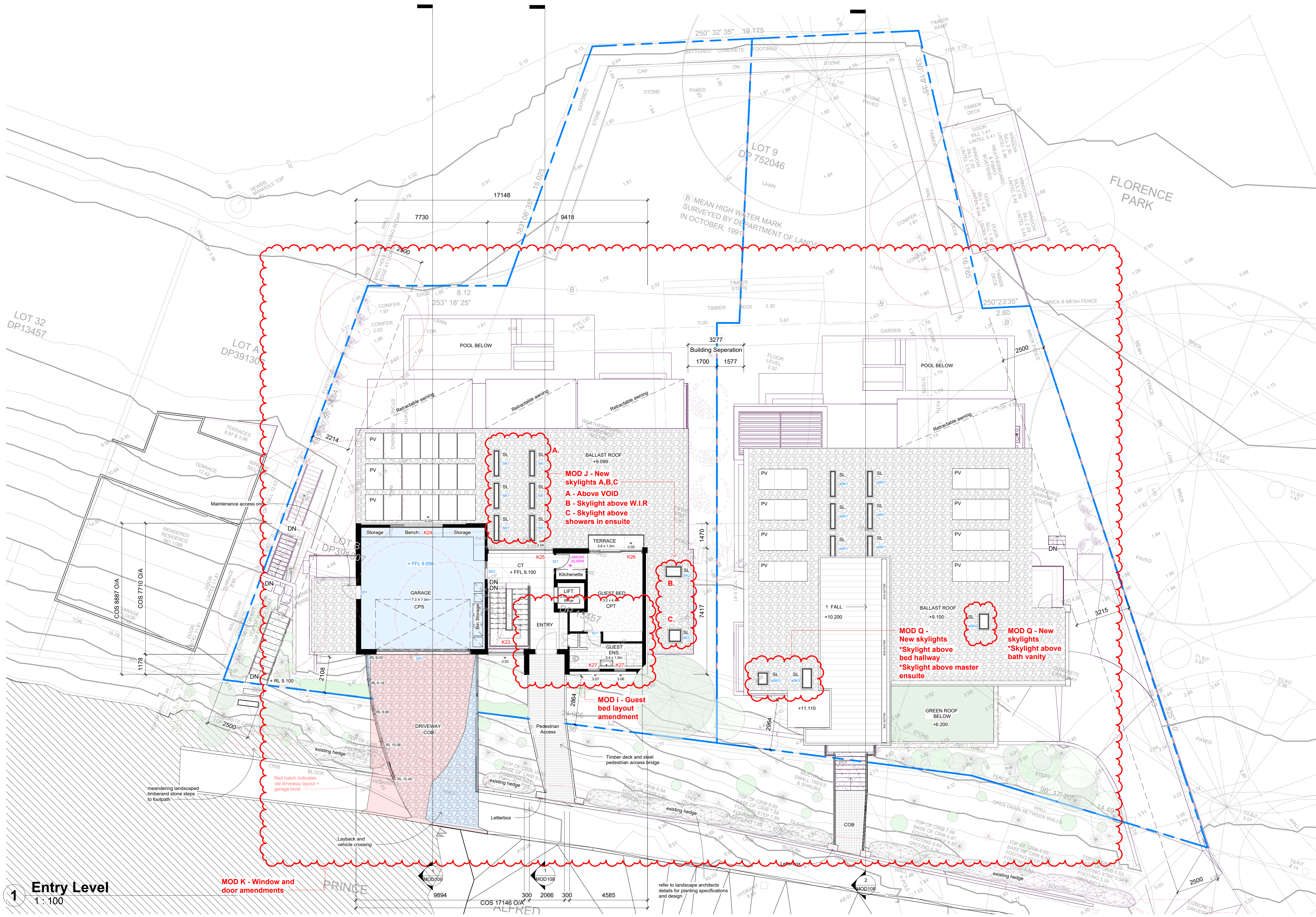
MOD H - Bathroom layout amendment

NT: the green roof is within 1m of the adjoining finished ground level in part and contributes to the street given the site topography  
Green roof over garage (min depth 600mm) Included in landscape calculations

Adjoining trees to be pruned to accommodate construction of upper level. Refer to arborist report for details.







1 Entry Level  
1:100

MOD K - Window and door amendments

MOD i - Guest bed layout amendment

MOD J - New skylights A,B,C  
A - Above VOID  
B - Skylight above W.I.R  
C - Skylight above showers in ensuite

MOD Q - New skylights  
\*Skylight above bed hallway  
\*Skylight above master ensuite

MOD Q - New skylights  
\*Skylight above bath vanity



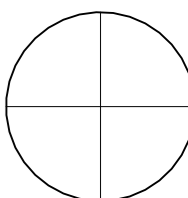
ARCLAB PTY LTD  
A.C.N. 148427282  
PO Box 1238 Newport Beach  
NSW 2108 Australia  
Telephone +61 418 988 637  
email: arclab@arclab.com.au  
www.arclab.com.au

Sheet Title  
Entry level  
Project Address  
120, 120a PRINCE ALFRED PARADE NEWPORT

Client  
BFRD No: 1 PTY. LTD.  
Documentation  
Modification to consent

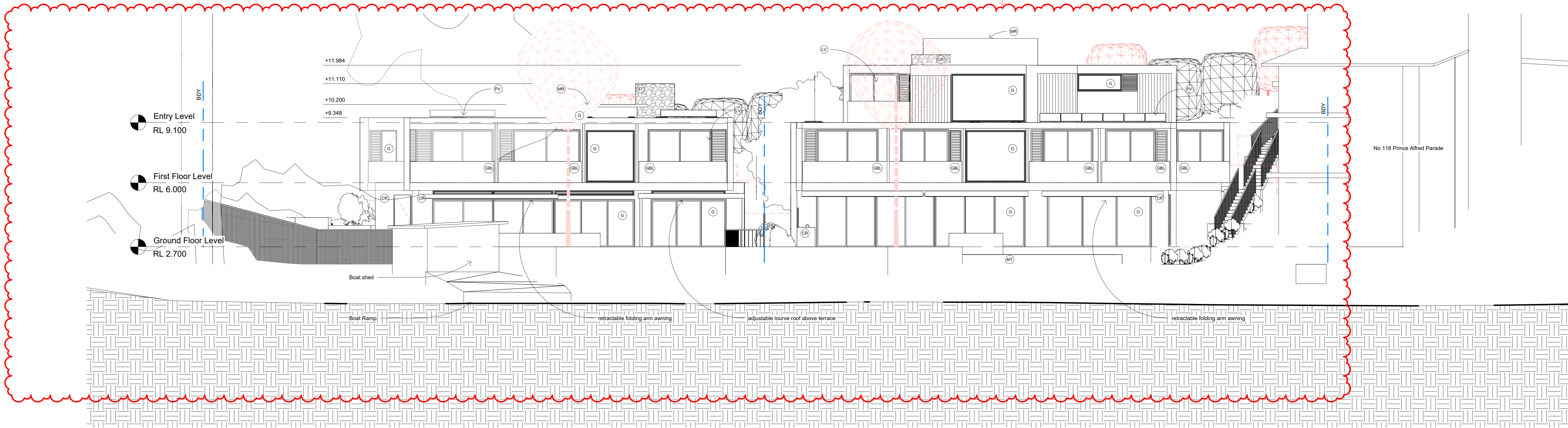
All works to be in accordance with Australian Standards, The Building Code of Australia, other relevant codes, and with Manufacturers' recommendations and instructions. Do not scale from drawings.  
Verify all dimensions on site prior to construction. The drawing is copyright and may not be used without written consent from ARCLAB PTY LTD.

Drawn	Scale	Sheet	Date	Job N°.	Sheet N°	Issue/Revision
MJC	1:100	A3	14/06/24		MOD104	MOD A - 14/06/24



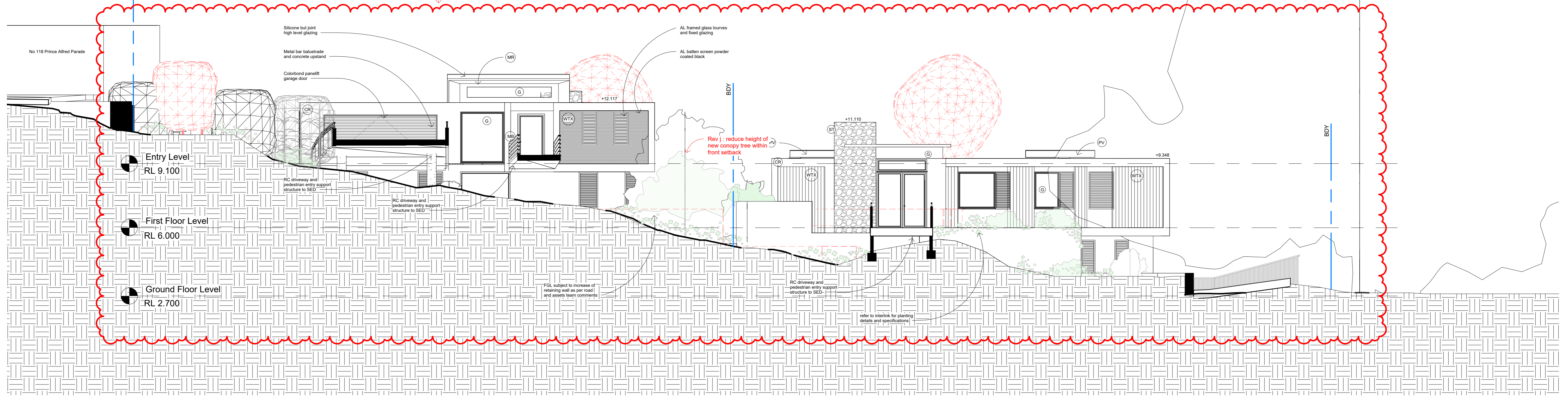


MOD -  
A,B,C,D,E,F,G,H,I,  
J,K,L,M,N,O,P,Q  
(Refer to plans)



1 120 120a North Elevation  
1 : 100

MOD -  
A,B,C,D,E,F,G,H,I,  
J,K,L,M,N,O,P,Q  
(Refer to plans)



2 120 120a South Elevation  
1 : 100



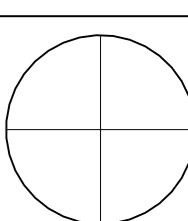
ARCLAB PTY LTD  
A.C.N. 16472762  
PO Box 1239 Newport Beach  
NSW 2108 Australia  
Telephone +61 418 886 637  
email: arclab@arclab.com.au  
www.arclab.com.au

Sheet Title  
North South Elevation  
Project Address  
120, 120a PRINCE ALFRED  
PARADE NEWPORT

Client  
BFRD No: 1 PTY. LTD.  
Documentation  
Modification to consent

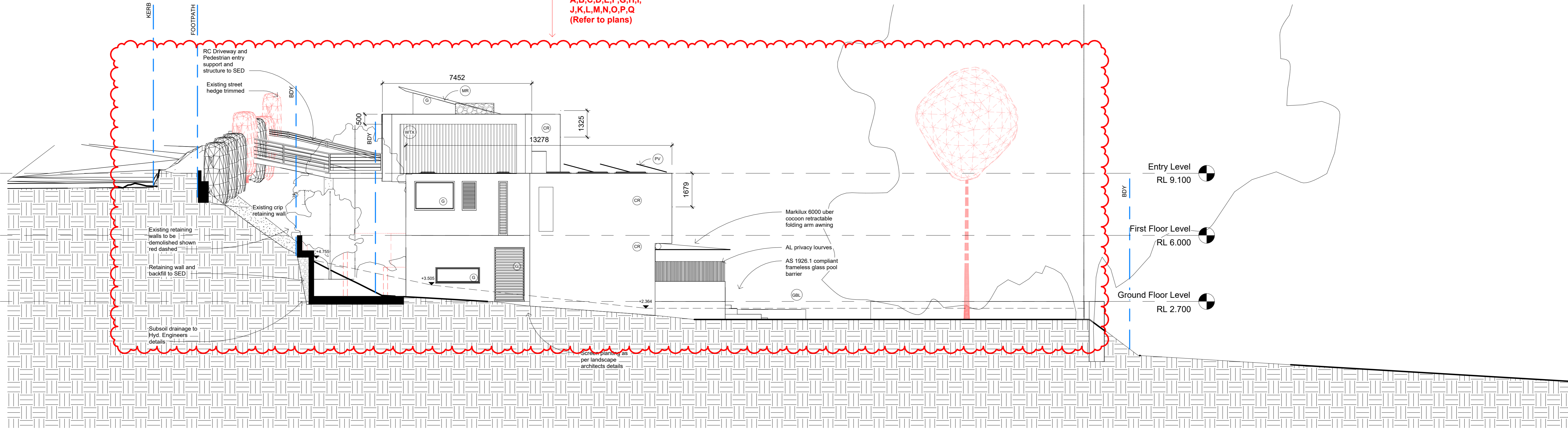
All works to be in accordance with Australian Standards, The Building Code of Australia, other relevant codes, and with Manufacturers' recommendations and instructions. Do not scale from drawings.  
Verify all dimensions on site prior to construction. The drawing is copyright and may not be used without written consent from ARCLAB PTY LTD.

Drawn	Scale	Sheet	Date	Job N°	Sheet N°	Issue/Revision
MJC	1 : 100	A 3	14/06/24	*	MOD105	MOD A - 14/06/24





MOD -  
A,B,C,D,E,F,G,H,I,  
J,K,L,M,N,O,P,Q  
(Refer to plans)



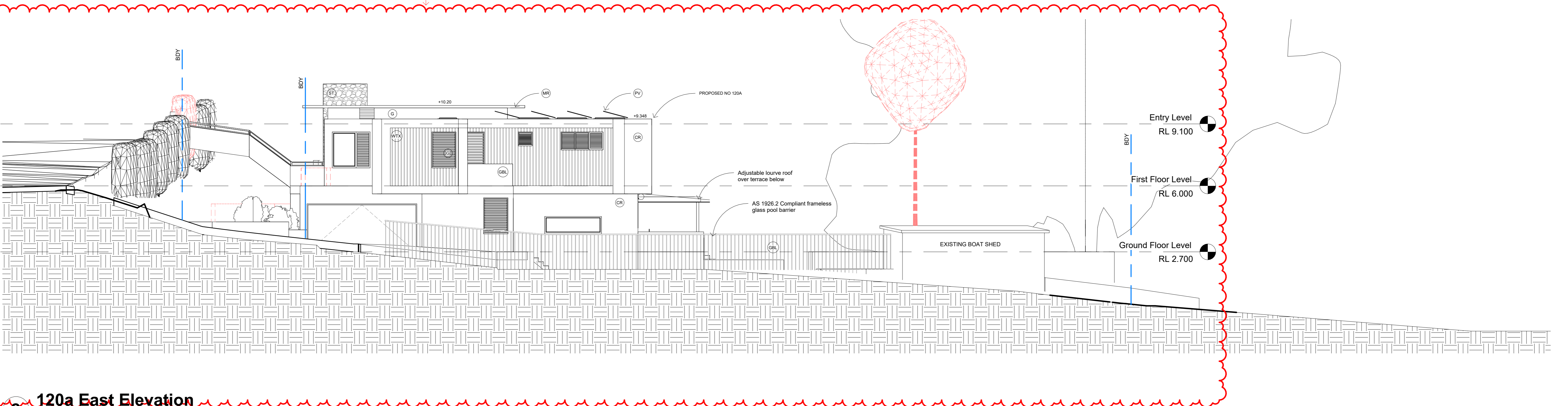
Entry Level  
RL 9.100

First Floor Level  
RL 6.000

Ground Floor Level  
RL 2.700

1 120 East Elevation  
1 : 100

MOD -  
A,B,C,D,E,F,G,H,I,  
J,K,L,M,N,O,P,Q  
(Refer to plans)



Entry Level  
RL 9.100

First Floor Level  
RL 6.000

Ground Floor Level  
RL 2.700

2 120a East Elevation  
1 : 100



ARCLAB PTY LTD  
A.C.N. 148472762  
PO Box 1238 Newport Beach  
NSW 2108 Australia  
Telephone +61 418 886 537  
email: arclab@arclab.com.au  
www.arclab.com.au

Sheet Title  
East Elevations

Project Address  
120, 120a PRINCE ALFRED  
PARADE NEWPORT

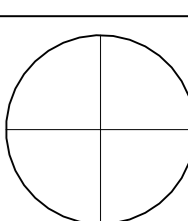
Client  
BFRD No: 1 PTY. LTD.

Documentation  
Modification to consent

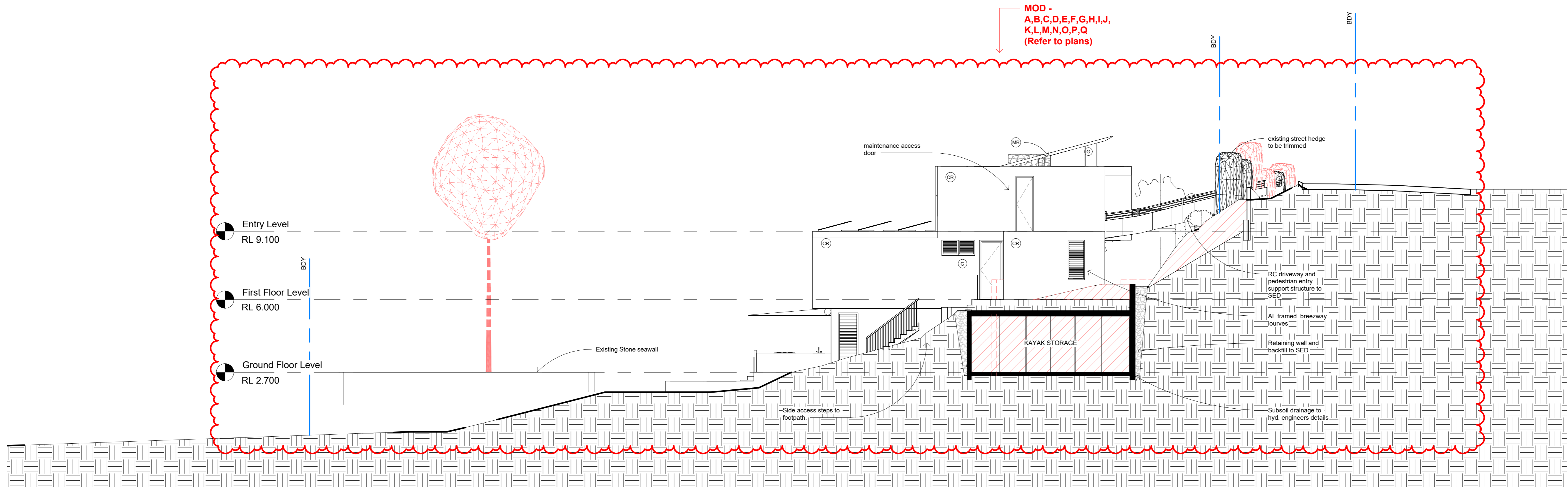
All works to be in accordance with Australian Standards, The Building Code of Australia, other relevant codes, and with Manufacturers' recommendations and instructions. Do not scale from drawings.

Verify all dimensions on site prior to construction. The drawing is copyright and may not be used without written consent from ARCLAB PTY LTD.

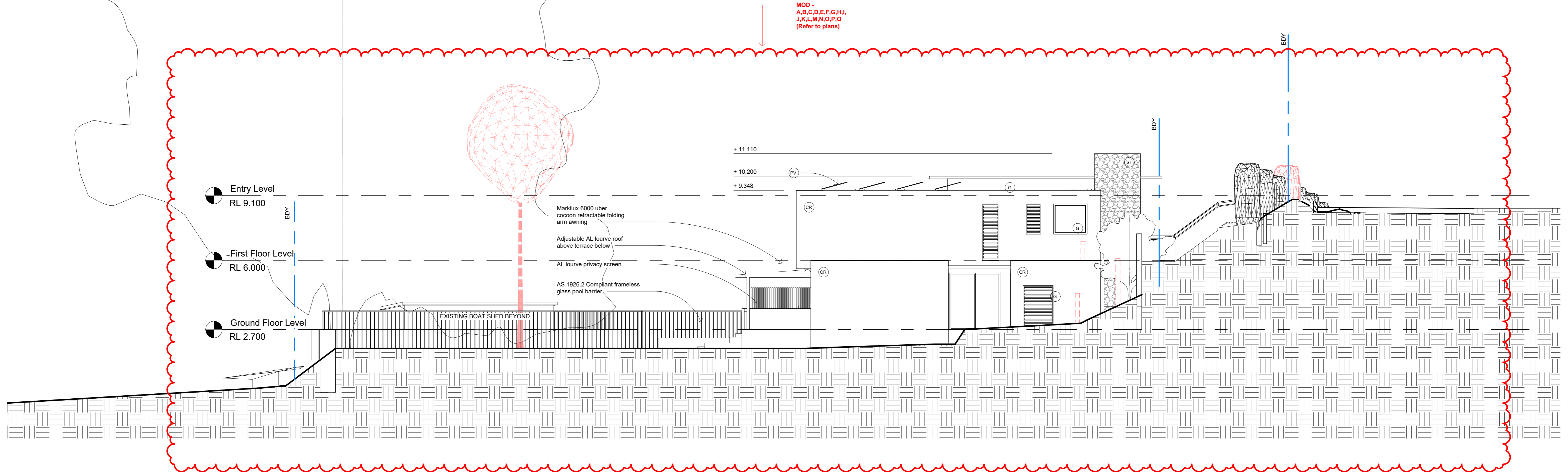
Drawn	Scale	Sheet	Date	Job N°	Sheet N°	Issue/Revision
MJC	1 : 100	A 3	14/06/24	*	MOD106	MOD A - 14/06/24



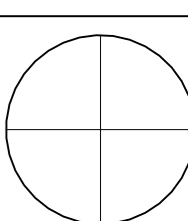




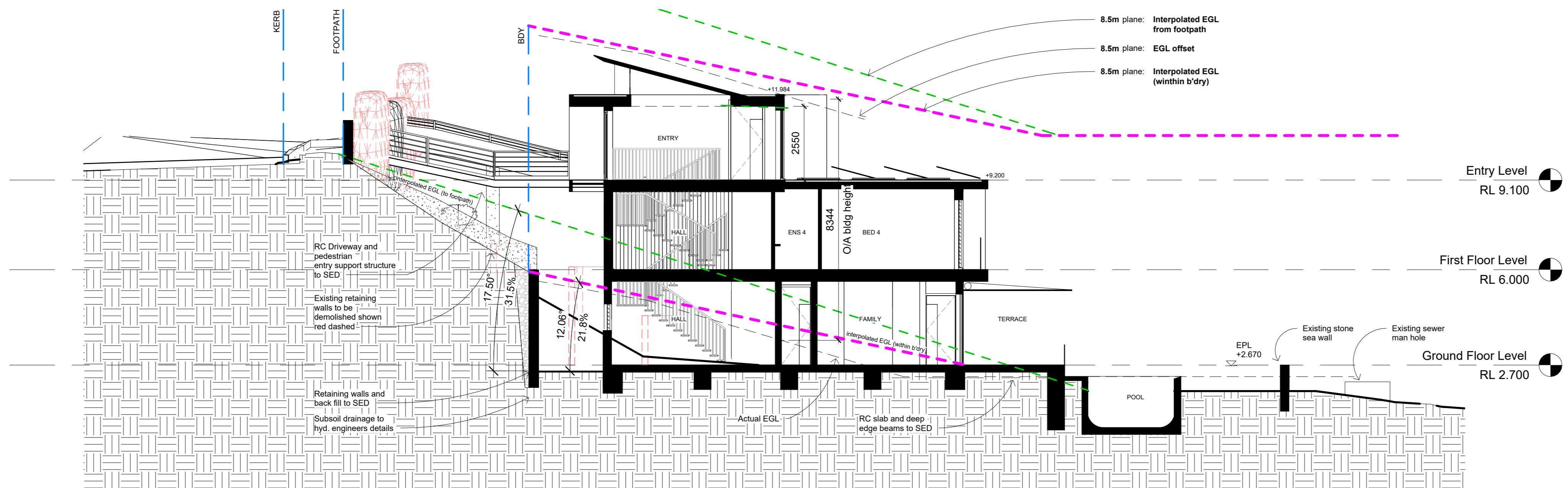
**1** 120 West Elevation  
1 : 100



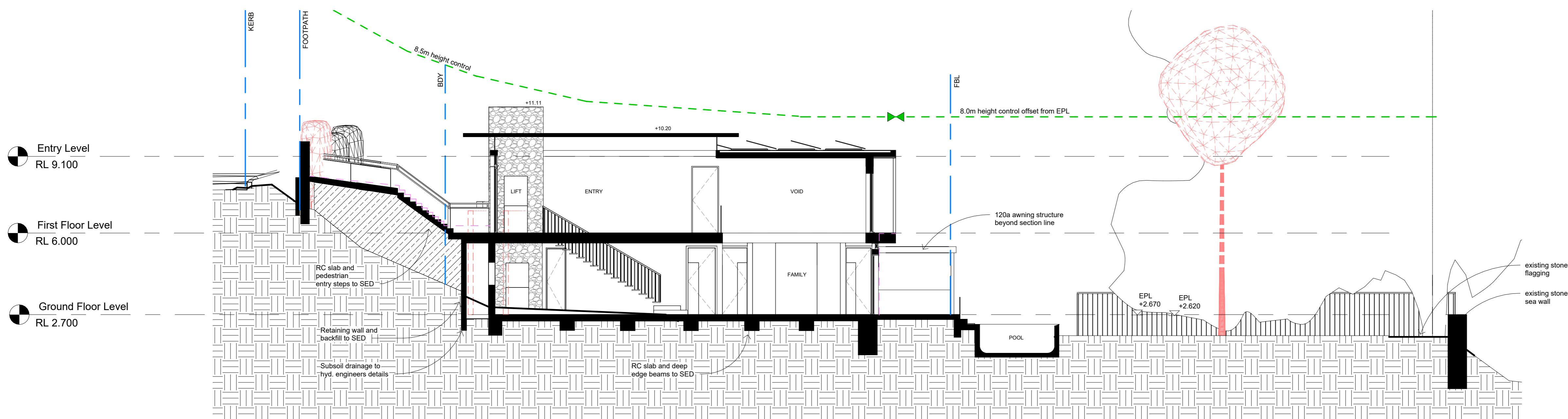
**2** 120a West Elevation  
1 : 100



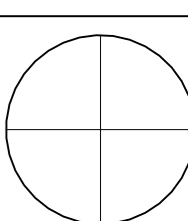




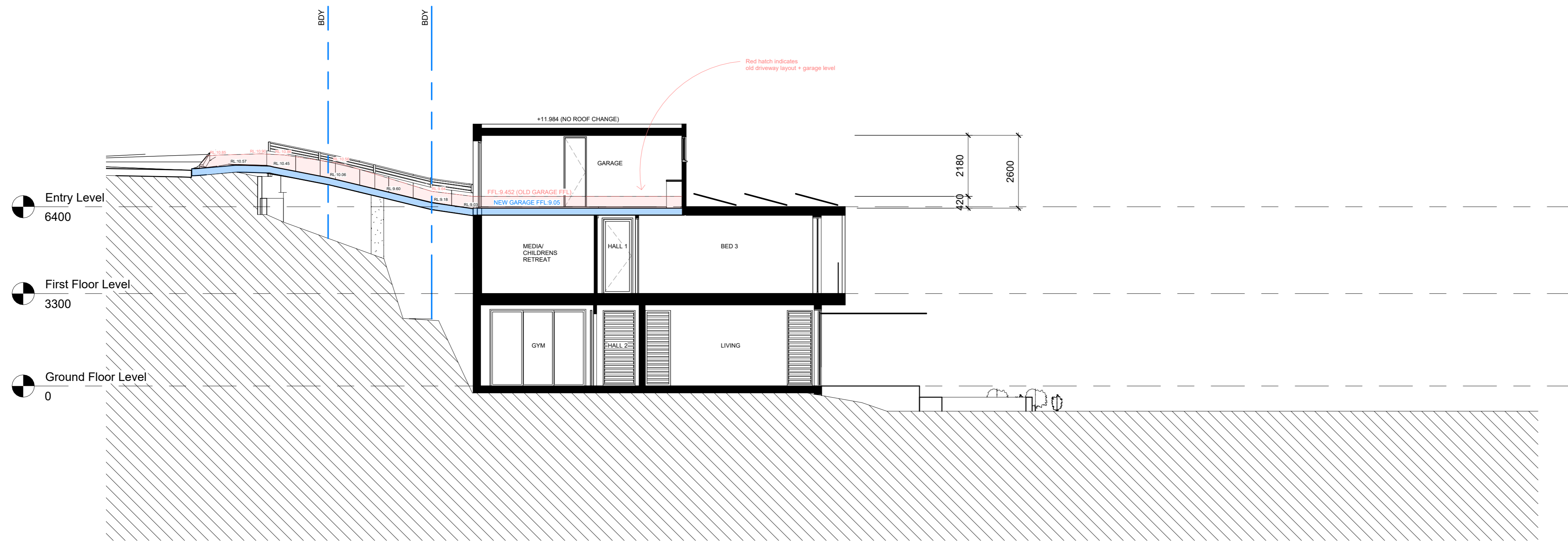
**1 Section A No. 120**  
1 : 100



**2 Section B No. 120a**  
1 : 100



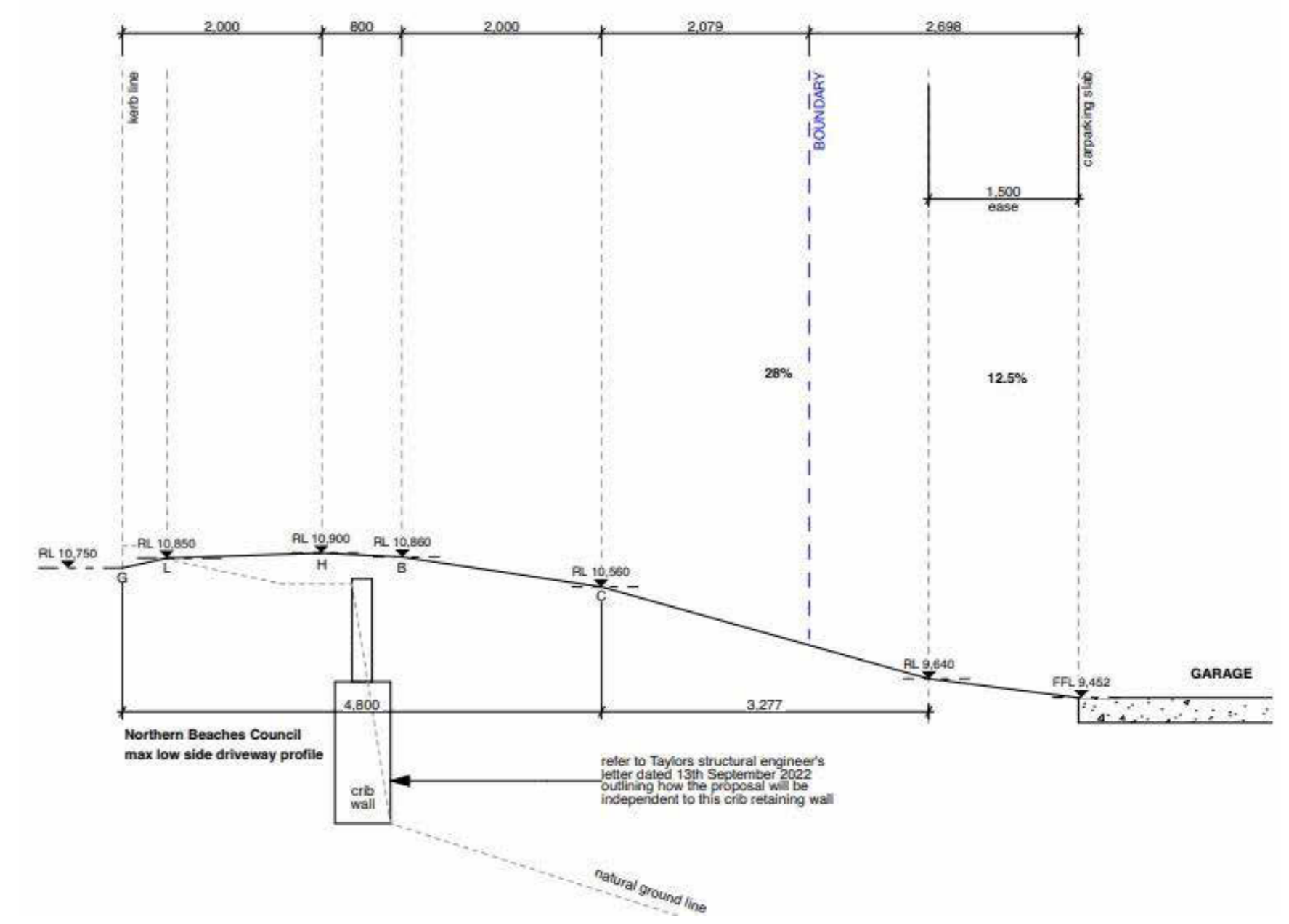




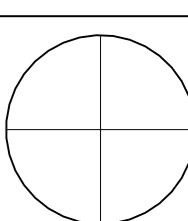
**1 Section No.120 Driveway**  
1:100



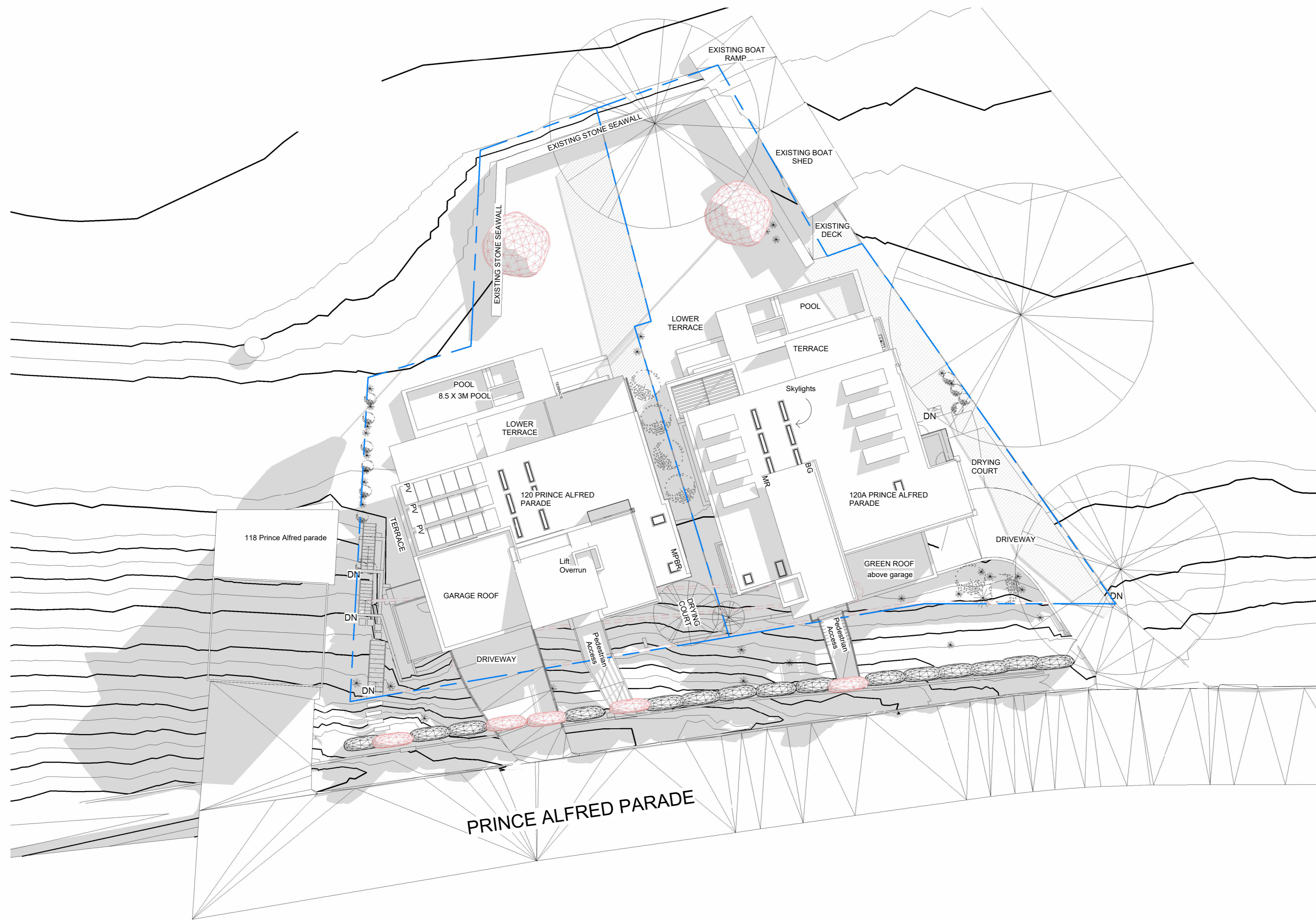
**NEW DRIVEWAY LONGSECTION - GARAGE FFL: 9.05**



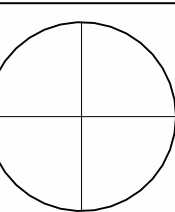
**OLD DRIVEWAY LONGSECTION - GARAGE FFL: 9.452**



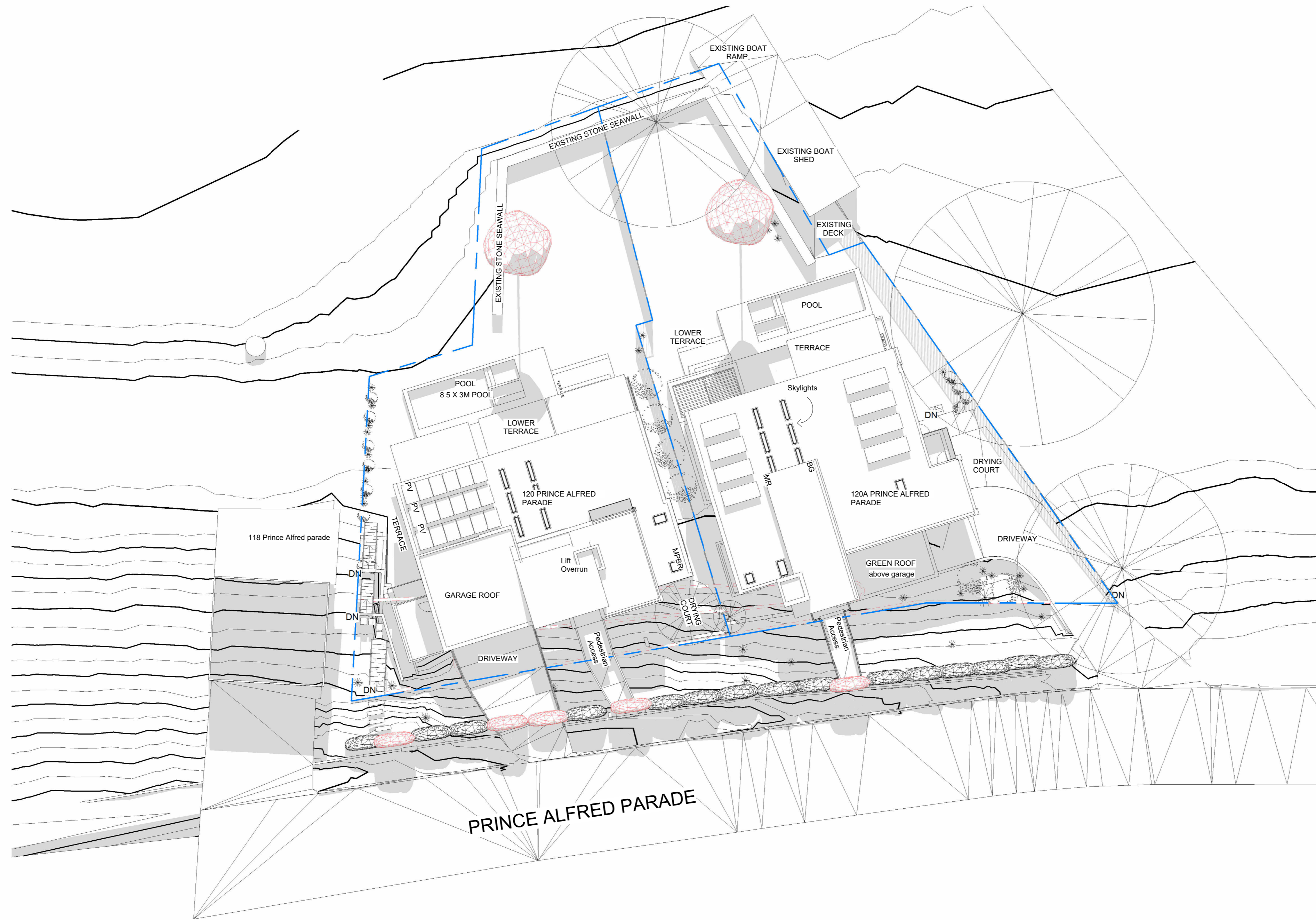




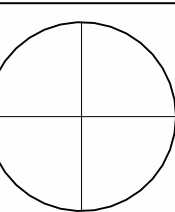
**1** Shadow diagram 9am 21st June  
1 : 200



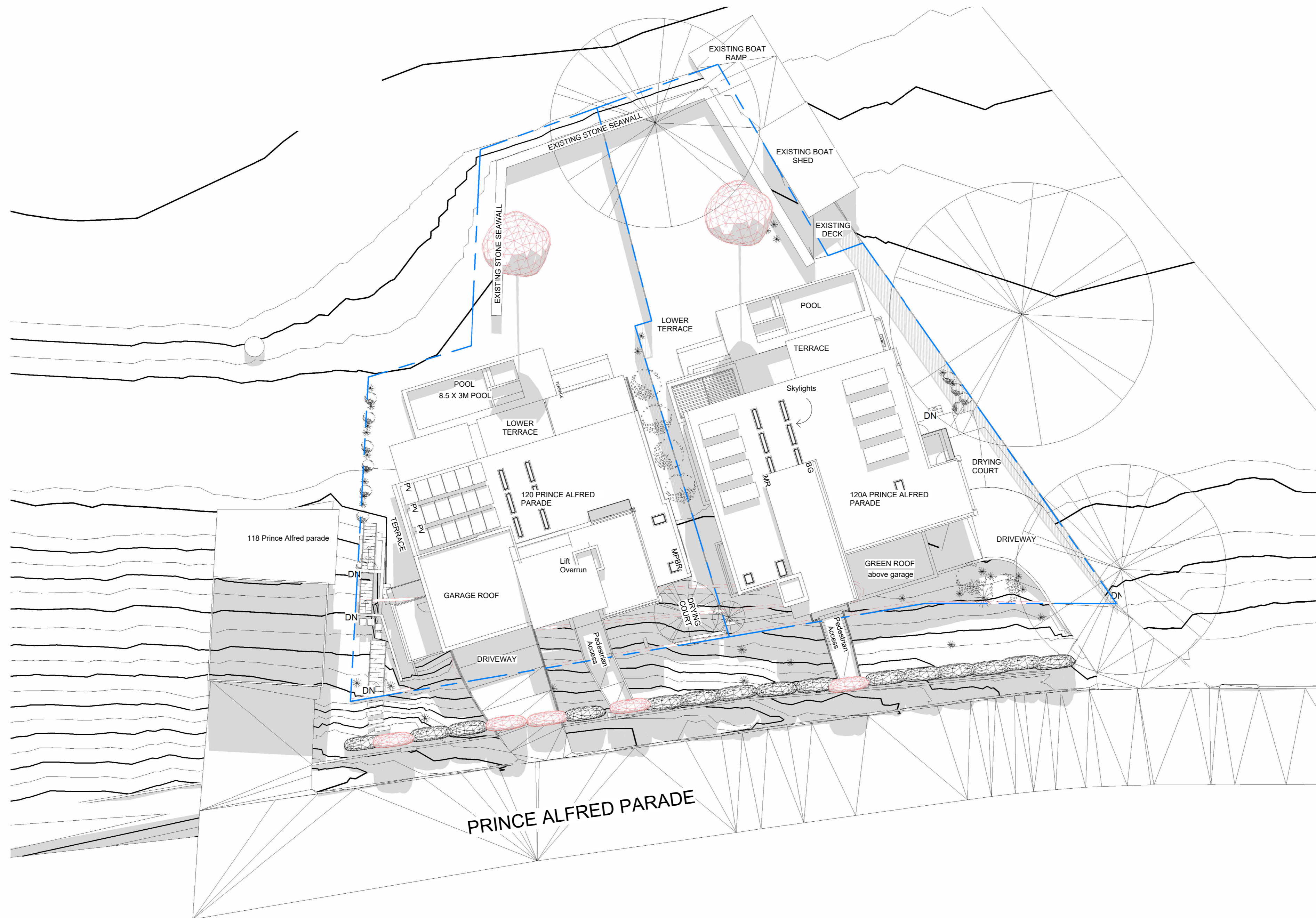




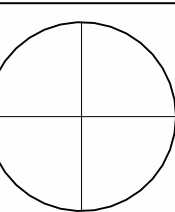
**1** Shadow diagram 12pm 21st June  
1 : 200



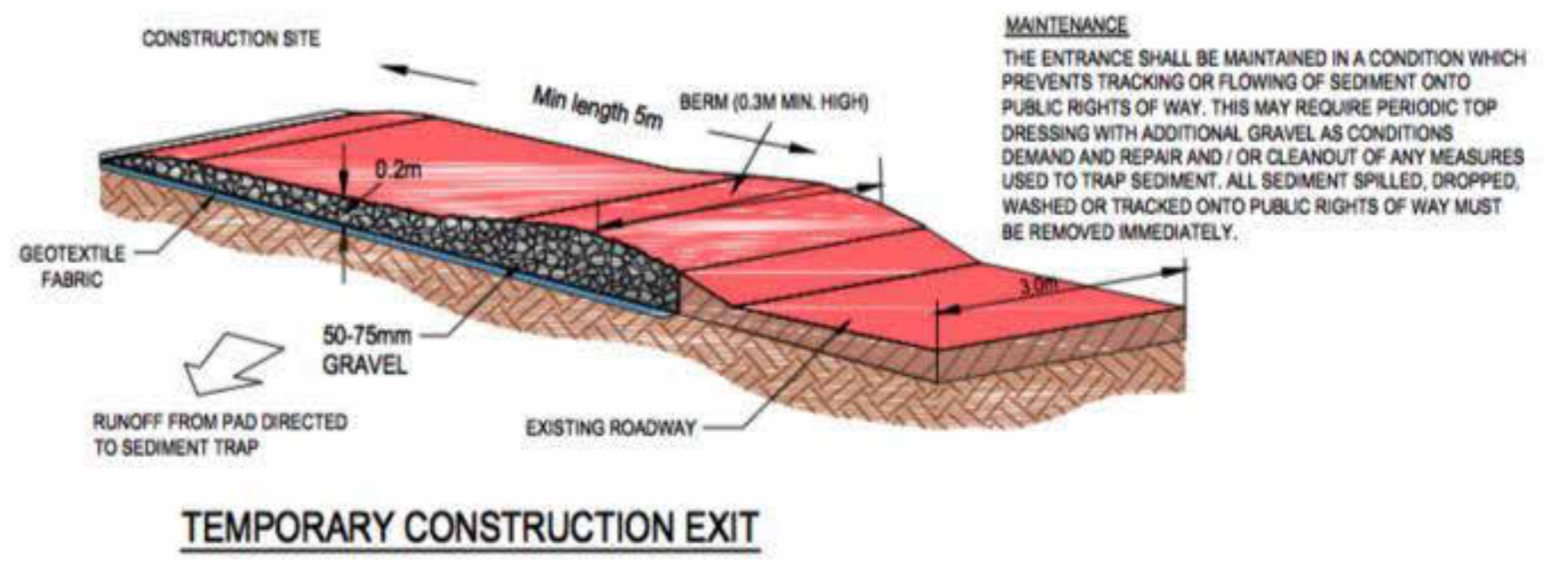
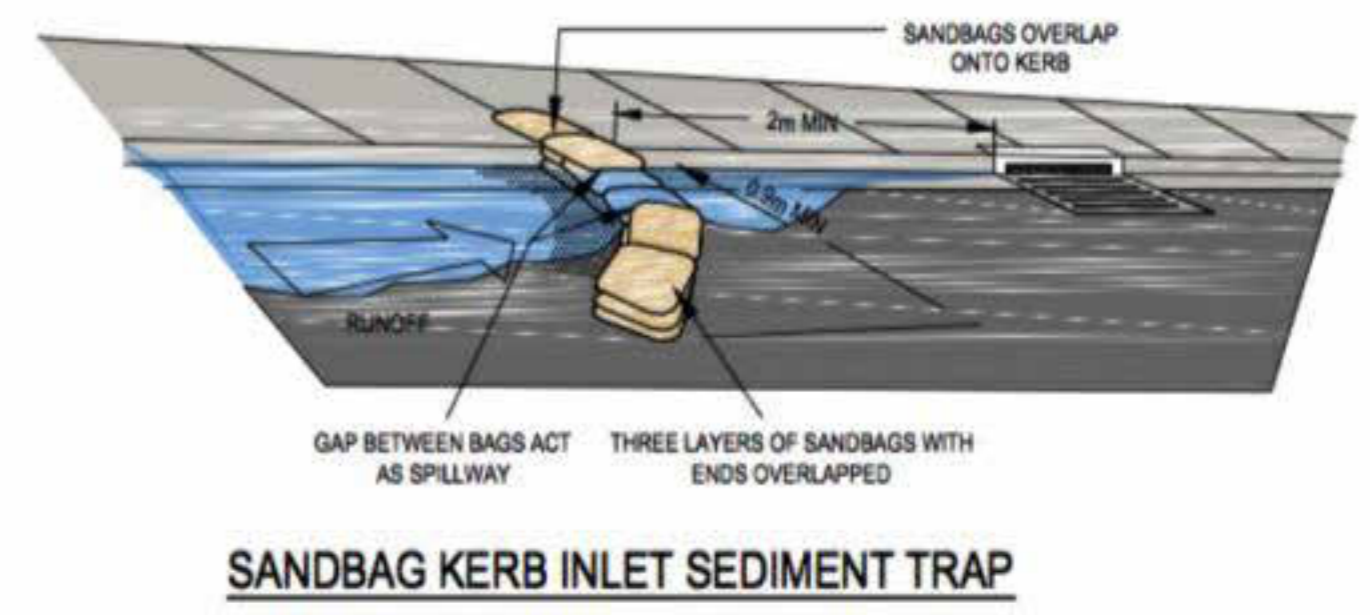
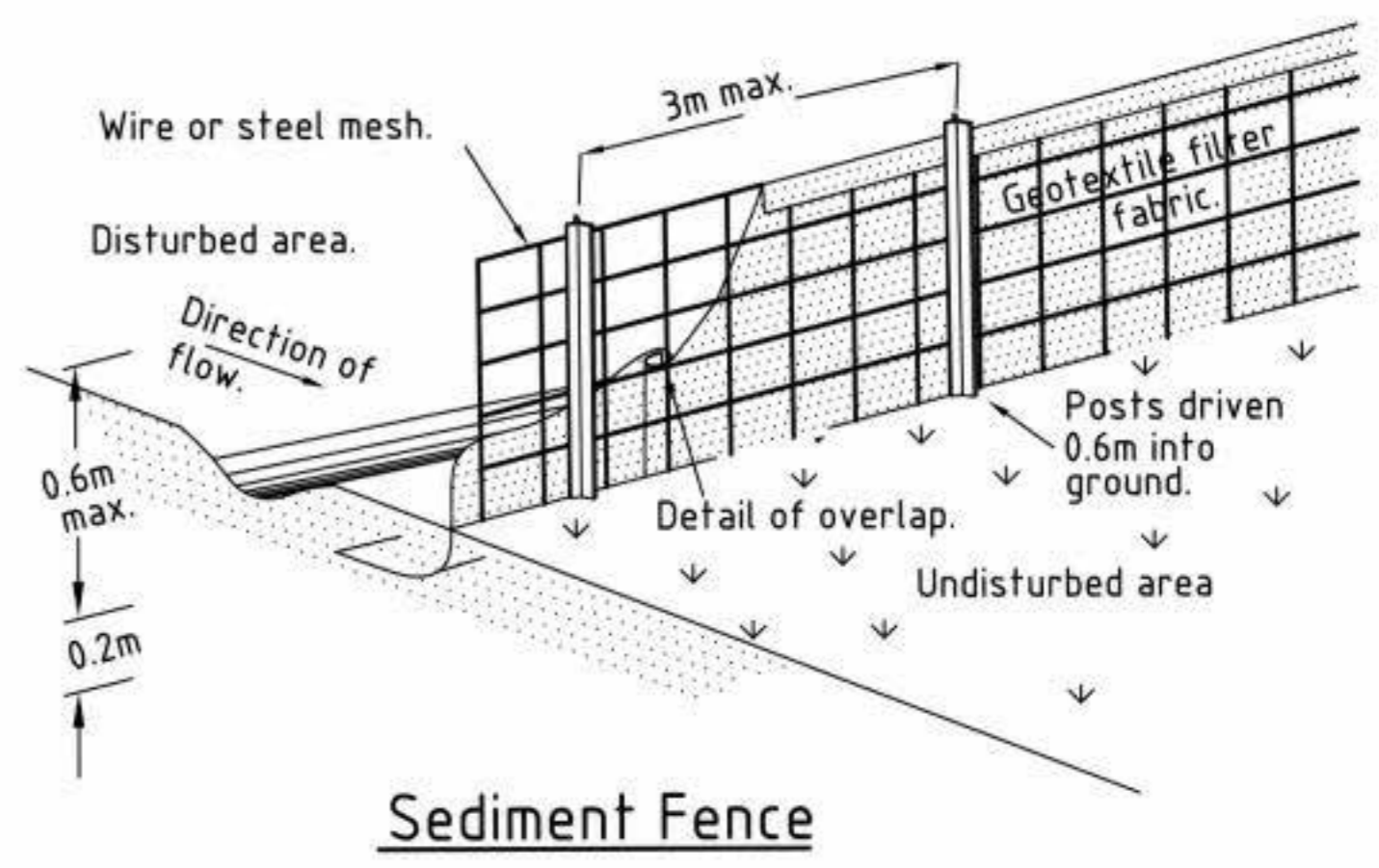




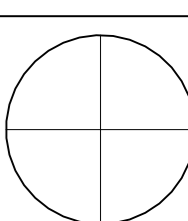
**1** Shadow diagram 3pm 21st June  
1 : 200



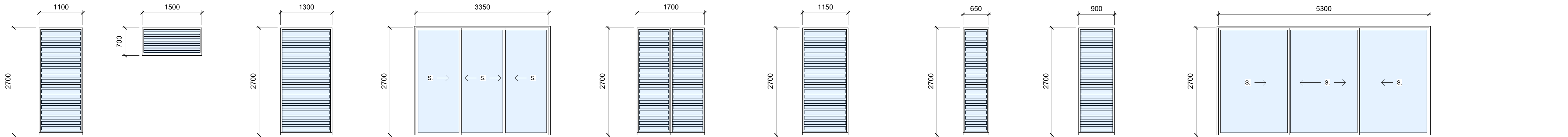




**1 Sediment and erosion**  
1 : 200







**MOD - K1**  
ID - 002 SHGC 0.58  
**W1.01**  
FRAME TYPE - Aluminium  
FRAME COLOUR - Dark grey  
GLAZING TYPE - Single clear

**MOD - K1A**  
ID - 002 SHGC 0.58  
**W1.01A**  
FRAME TYPE - Aluminium  
FRAME COLOUR - Dark grey  
GLAZING TYPE - Single clear

**MOD - K2**  
ID - 002 SHGC 0.58  
**W1.02**  
FRAME TYPE - Aluminium  
FRAME COLOUR - Dark grey  
GLAZING TYPE - Single clear

**MOD - K3**  
TELESCOPIC  
ID - 002 SHGC 0.58  
**W1.03**  
FRAME TYPE - Aluminium  
FRAME COLOUR - Dark grey  
GLAZING TYPE - Single clear

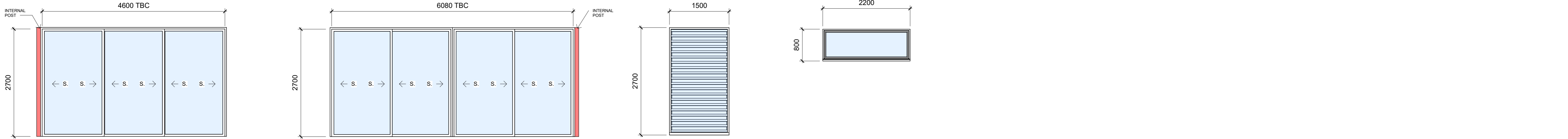
**MOD - K4**  
ID - 002 SHGC 0.58  
**W1.04**  
FRAME TYPE - Aluminium  
FRAME COLOUR - Dark grey  
GLAZING TYPE - Single clear

**MOD - K5**  
ID - 002 SHGC 0.58  
**W1.05**  
FRAME TYPE - Aluminium  
FRAME COLOUR - Dark grey  
GLAZING TYPE - Single clear

**MOD - K6**  
ID - 002 SHGC 0.58  
**W1.06**  
FRAME TYPE - Aluminium  
FRAME COLOUR - Dark grey  
GLAZING TYPE - Single clear

**MOD - K7/K8**  
ID - 002 SHGC 0.58  
**W1.07/W1.08**  
FRAME TYPE - Aluminium  
FRAME COLOUR - Dark grey  
GLAZING TYPE - Single clear

**MOD - K9**  
TELESCOPIC DOUBLE GLAZE  
ID - 002 SHGC 0.58  
**W1.09**  
FRAME TYPE - Aluminium  
FRAME COLOUR - Dark grey  
GLAZING TYPE - Double clear

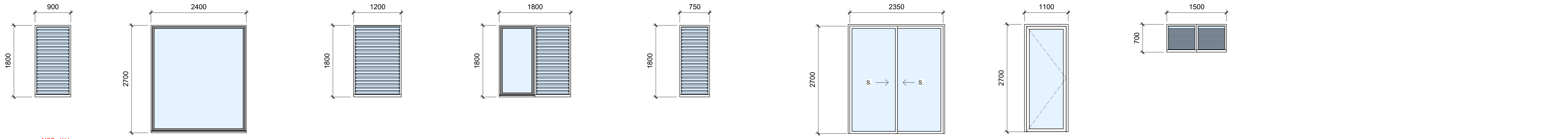


**MOD - K10**  
TELESCOPIC DOUBLE GLAZE  
ID - 002 SHGC 0.58  
**W1.10 - TBC**  
FRAME TYPE - Aluminium  
FRAME COLOUR - Dark grey  
GLAZING TYPE - Double clear

**MOD - K11**  
TELESCOPIC DOUBLE GLAZE  
ID - 002 SHGC 0.58  
**W1.11 - TBC**  
FRAME TYPE - Aluminium  
FRAME COLOUR - Dark grey  
GLAZING TYPE - Double clear

**MOD - K12**  
ID - 002 SHGC 0.58  
**W1.12**  
FRAME TYPE - Aluminium  
FRAME COLOUR - Dark grey  
GLAZING TYPE - Single clear

**MOD - K13**  
ID - 002 SHGC 0.58  
**W1.113**  
FRAME TYPE - Aluminium  
FRAME COLOUR - Dark grey  
GLAZING TYPE - Single clear



**MOD - K14**  
OPAQUE  
ID - 002 SHGC 0.58  
**W2.01/W2.02**  
FRAME TYPE - Aluminium  
FRAME COLOUR - Dark grey  
GLAZING TYPE - Opaque

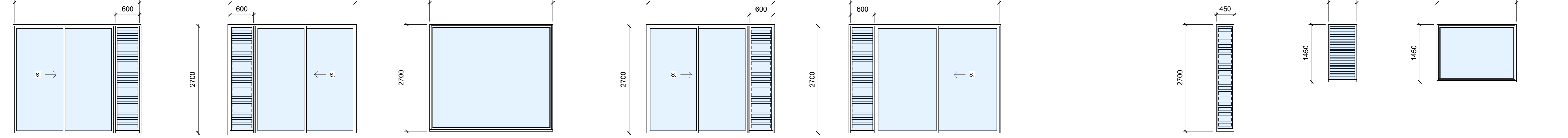
**MOD - K15**  
ID - 002 SHGC 0.58  
**W2.03**  
FRAME TYPE - Aluminium  
FRAME COLOUR - Dark grey  
GLAZING TYPE - Single clear

**MOD - K16**  
ID - 002 SHGC 0.58  
**W2.04**  
FRAME TYPE - Aluminium  
FRAME COLOUR - Dark grey  
GLAZING TYPE - Single clear

**MOD - K17**  
TELESCOPIC  
ID - 002 SHGC 0.58  
**W2.07 - TBC**  
FRAME TYPE - Aluminium  
FRAME COLOUR - Dark grey  
GLAZING TYPE - Single clear

**MOD - K18**  
ID - 001 SHGC 0.49  
**W2.08**  
FRAME TYPE - Aluminium  
FRAME COLOUR - Dark grey  
GLAZING TYPE - Single clear

**MOD - K19**  
OPAQUE + RESTRICTED OPENING  
ID - 002 SHGC 0.58  
**W2.09**  
FRAME TYPE - Aluminium  
FRAME COLOUR - Dark grey  
GLAZING TYPE - Opaque



**DOUBLE GLAZE**  
ID - 002 SHGC 0.58  
**W2.11**  
FRAME TYPE - Aluminium  
FRAME COLOUR - Dark grey  
GLAZING TYPE - Double clear

**DOUBLE GLAZE**  
ID - 002 SHGC 0.58  
**W2.12**  
FRAME TYPE - Aluminium  
FRAME COLOUR - Dark grey  
GLAZING TYPE - Double clear

**DOUBLE GLAZE**  
ID - 002 SHGC 0.58  
**W2.13**  
FRAME TYPE - Aluminium  
FRAME COLOUR - Dark grey  
GLAZING TYPE - Double clear

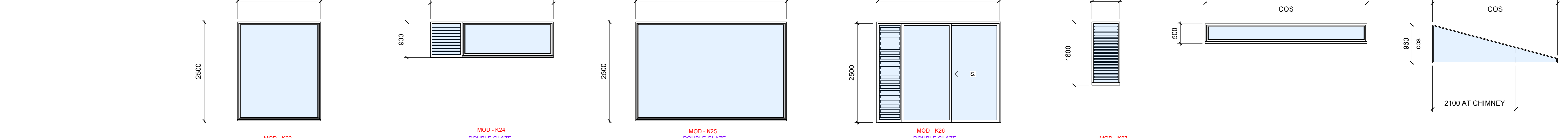
**DOUBLE GLAZE**  
ID - 002 SHGC 0.58  
**W2.14**  
FRAME TYPE - Aluminium  
FRAME COLOUR - Dark grey  
GLAZING TYPE - Double clear

**DOUBLE GLAZE**  
ID - 002 SHGC 0.58  
**W2.15**  
FRAME TYPE - Aluminium  
FRAME COLOUR - Dark grey  
GLAZING TYPE - Double clear

**MOD - K20**  
OPAQUE + RESTRICTED OPENING  
ID - 002 SHGC 0.58  
**W2.17**  
FRAME TYPE - Aluminium  
FRAME COLOUR - Dark grey  
GLAZING TYPE - Opaque

**MOD - K21**  
OPAQUE + RESTRICTED OPENING  
ID - 002 SHGC 0.58  
**W2.18**  
FRAME TYPE - Aluminium  
FRAME COLOUR - Dark grey  
GLAZING TYPE - Opaque

**MOD - K22**  
OPAQUE  
ID - 002 SHGC 0.58  
**W2.19**  
FRAME TYPE - Aluminium  
FRAME COLOUR - Dark grey  
GLAZING TYPE - Opaque



**MOD - K23**  
ID - 002 SHGC 0.58  
**W3.02**  
FRAME TYPE - Aluminium  
FRAME COLOUR - Dark grey  
GLAZING TYPE - Single clear

**MOD - K24**  
DOUBLE GLAZE  
ID - 002 SHGC 0.58  
**W3.03**  
FRAME TYPE - Aluminium  
FRAME COLOUR - Dark grey  
GLAZING TYPE - Double clear

**MOD - K25**  
DOUBLE GLAZE  
ID - 002 SHGC 0.58  
**W3.04**  
FRAME TYPE - Aluminium  
FRAME COLOUR - Dark grey  
GLAZING TYPE - Double clear

**MOD - K26**  
DOUBLE GLAZE  
ID - 002 SHGC 0.58  
**W3.05**  
FRAME TYPE - Aluminium  
FRAME COLOUR - Dark grey  
GLAZING TYPE - Double clear

**MOD - K27**  
ID - 002 SHGC 0.58  
**W3.06/W3.07**  
FRAME TYPE - Aluminium  
FRAME COLOUR - Dark grey  
GLAZING TYPE - Single clear

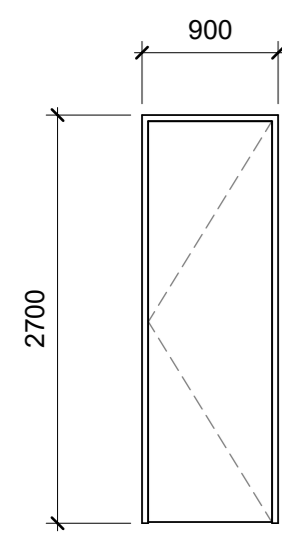
**W3.06\* TBC CLEARSTOREY**  
FRAME TYPE - Silicone but joint glass in channel top and bottom  
FRAME COLOUR - Dark grey  
GLAZING TYPE - Single clear

**W3.\*\* TBC CLEARSTOREY**  
FRAME TYPE - Silicone but joint glass in channel top and bottom. TBC  
FRAME COLOUR - Dark grey  
GLAZING TYPE - Single clear

NOTE - 2X REQUIRED DIMENSIONS TO BE CONFIRMED ON SITE

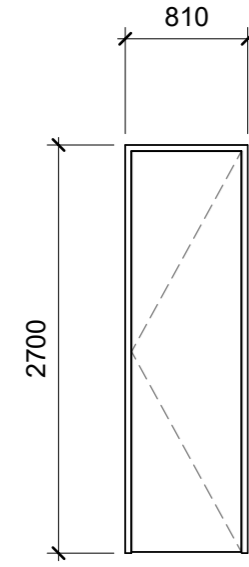
**Window and door schedule 120 P1**  
1 : 50





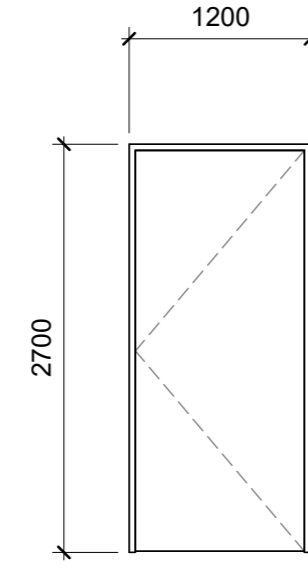
**ED1**

FRAME TYPE - Timber or Aluminium  
 FRAME COLOUR - TBC  
 GLAZING TYPE - NIL



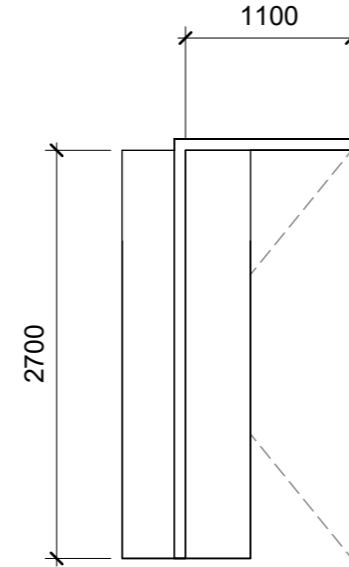
**ID1**

FRAME TYPE - Timber or Aluminium  
 FRAME COLOUR - TBC  
 GLAZING TYPE - NIL



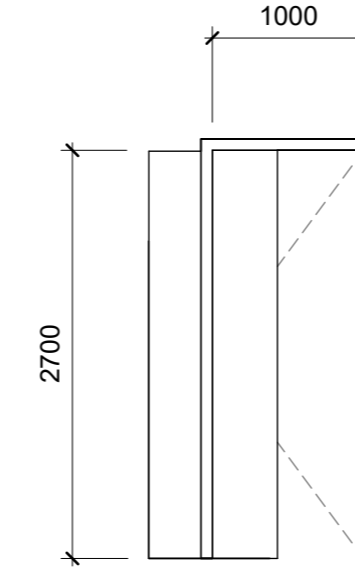
**ID2**

FRAME TYPE - Timber or Aluminium  
 FRAME COLOUR - TBC  
 GLAZING TYPE - NIL



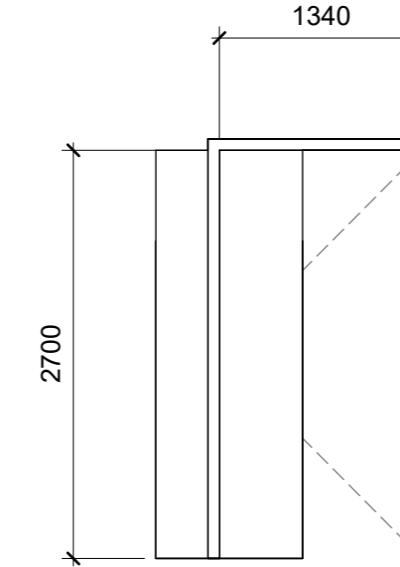
**CS1**

FRAME TYPE - Timber or Aluminium  
 FRAME COLOUR - TBC  
 GLAZING TYPE - NIL



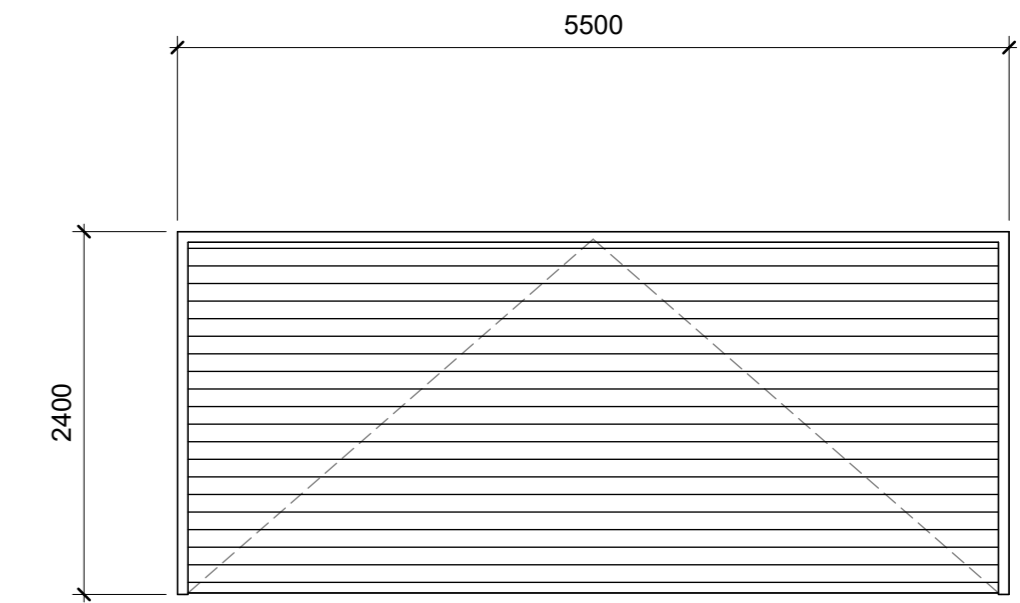
**CS2**

FRAME TYPE - Timber or Aluminium  
 FRAME COLOUR - TBC  
 GLAZING TYPE - NIL



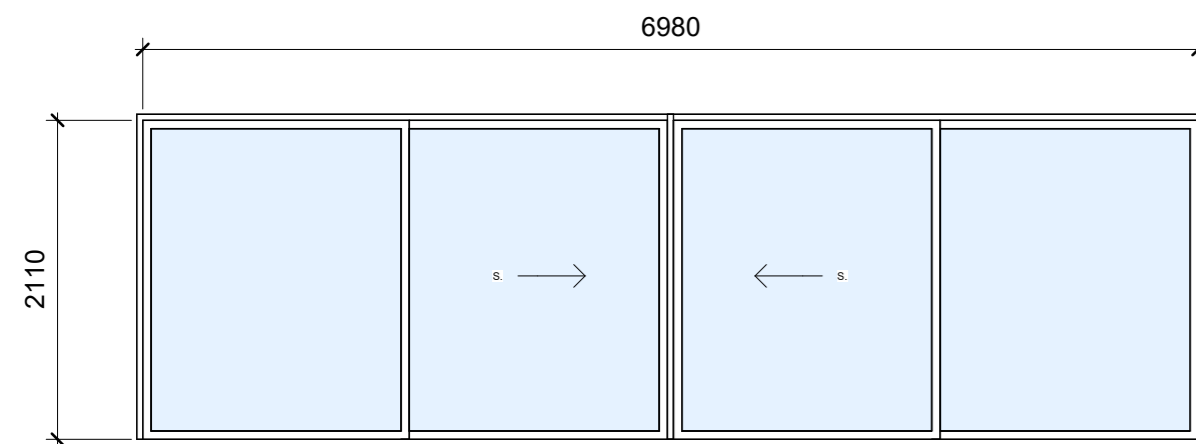
**CS3**

FRAME TYPE - Timber or Aluminium  
 FRAME COLOUR - TBC  
 GLAZING TYPE - NIL



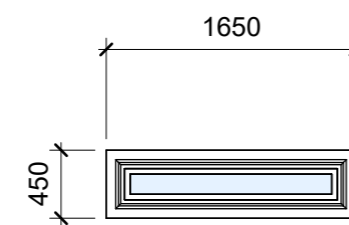
**GD1**

FRAME TYPE - TBC  
 FRAME COLOUR - TBC  
 GLAZING TYPE - NIL



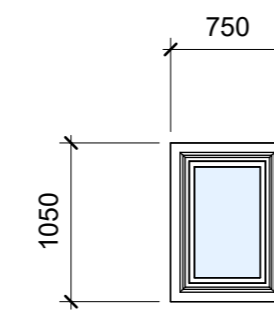
ID - 002 SHGC 0.58  
**KSD1.00**

FRAME TYPE - Aluminium  
 FRAME COLOUR - Dark grey  
 GLAZING TYPE - Single clear



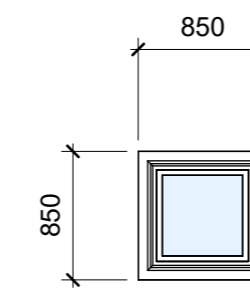
**SK1**

FRAME TYPE - Aluminium  
 FRAME COLOUR - Dark grey  
 GLAZING TYPE - Single clear



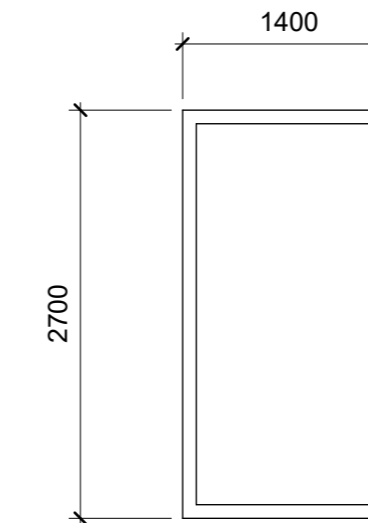
**SK2**

FRAME TYPE - Aluminium  
 FRAME COLOUR - Dark grey  
 GLAZING TYPE - Single clear



**SK3**

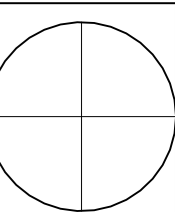
FRAME TYPE - Aluminium  
 FRAME COLOUR - Dark grey  
 GLAZING TYPE - Single clear



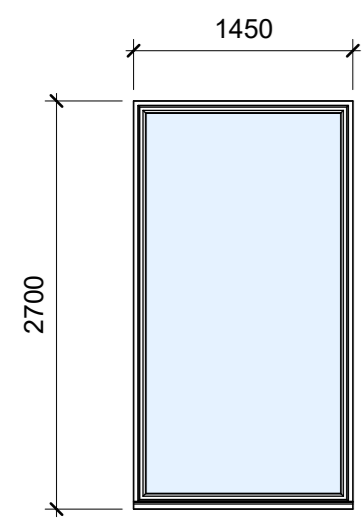
**SLD1**

FRAME TYPE - Aluminium  
 FRAME COLOUR - TBC  
 GLAZING TYPE - NIL

**Window and door schedule 120 P2 NOT SHOWN**  
 1 : 50



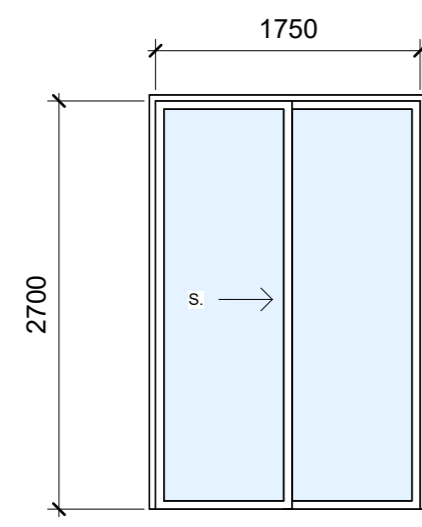




MOD - K28  
ID - 002 SHGC 0.58

**Wa1.01**

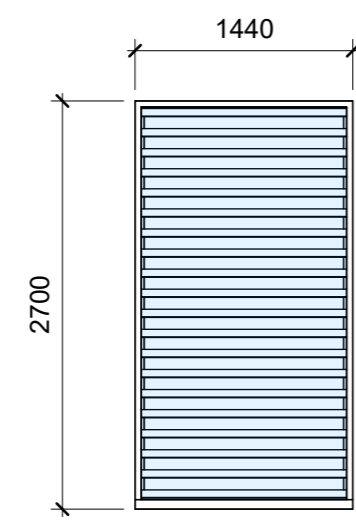
FRAME TYPE - Aluminium  
FRAME COLOUR - Dark grey  
GLAZING TYPE - Single clear



MOD - K29  
ID - 004 SHGC 0.53

**Wa1.02**

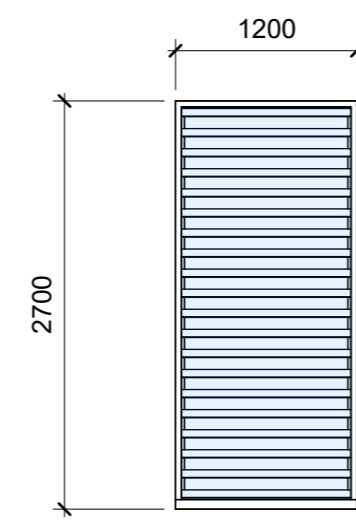
FRAME TYPE - Aluminium  
FRAME COLOUR - Dark grey  
GLAZING TYPE - Single clear



MOD - K30  
ID - 004 SHGC 0.53

**Wa1.03**

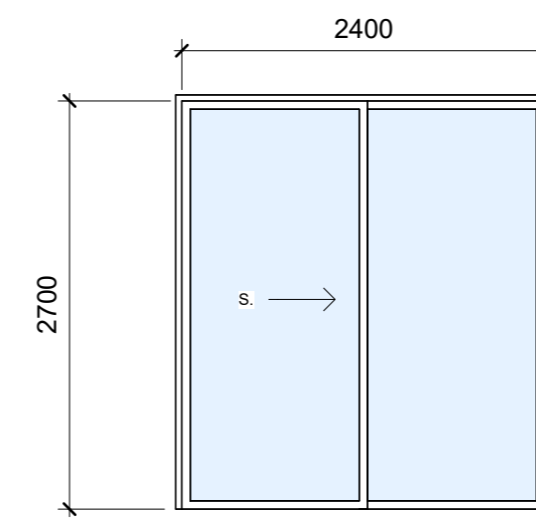
FRAME TYPE - Aluminium  
FRAME COLOUR - Dark grey  
GLAZING TYPE - Single clear



MOD - K31  
ID - 004 SHGC 0.53

**Wa1.04**

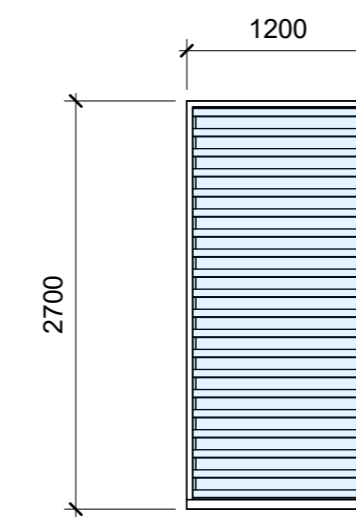
FRAME TYPE - Aluminium  
FRAME COLOUR - Dark grey  
GLAZING TYPE - Single clear



MOD - K32  
ID - 002 SHGC 0.58

**Wa1.05**

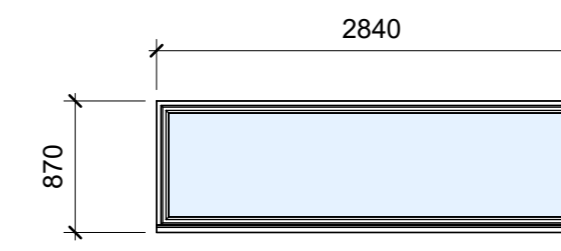
FRAME TYPE - Aluminium  
FRAME COLOUR - Dark grey  
GLAZING TYPE - Single clear



MOD - K33  
ID - 001 SHGC 0.49

**Wa1.06**

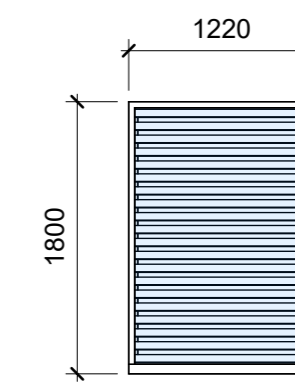
FRAME TYPE - Aluminium  
FRAME COLOUR - Dark grey  
GLAZING TYPE - Single clear



MOD - K34  
ID - 002 SHGC 0.58

**Wa1.16**

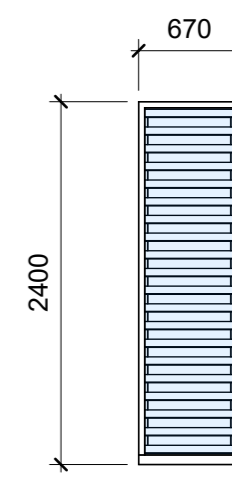
FRAME TYPE - Aluminium  
FRAME COLOUR - Dark grey  
GLAZING TYPE - Single clear



MOD - K35  
ID - 002 SHGC 0.58

**Wa1.18**

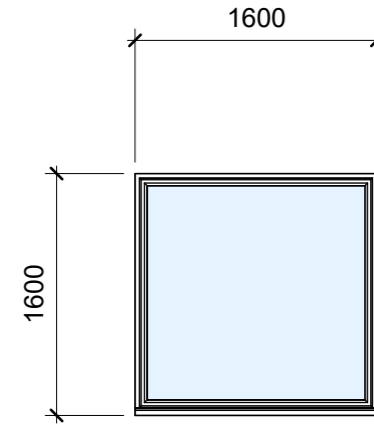
FRAME TYPE - Aluminium  
FRAME COLOUR - Dark grey  
GLAZING TYPE - Single clear



MOD - K36  
ID - 002 SHGC 0.58

**Wa1.20/Wa1.21**

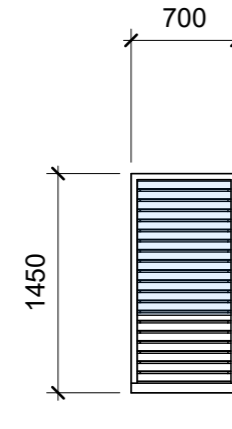
FRAME TYPE - Aluminium  
FRAME COLOUR - Dark grey  
GLAZING TYPE - Single clear



MOD - K37  
OPAQUE  
ID - 002 SHGC 0.58

**Wa2.05**

FRAME TYPE - Aluminium  
FRAME COLOUR - Dark grey  
GLAZING TYPE - Opaque



MOD - K38  
OPAQUE + RESTRICTED OPENING  
ID - 002 SHGC 0.58

**Wa2.06**

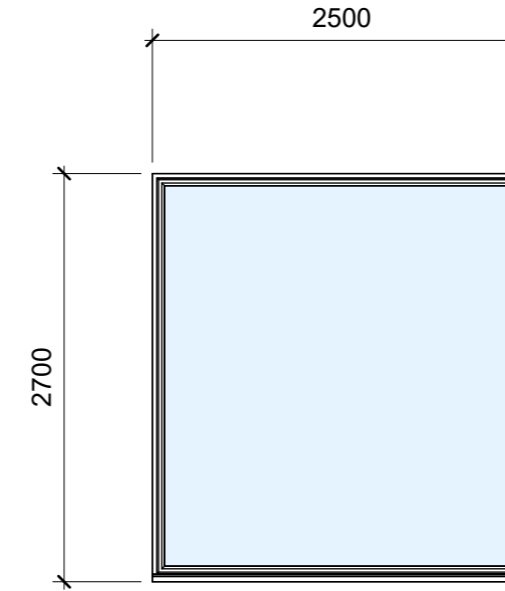
FRAME TYPE - Aluminium  
FRAME COLOUR - Dark grey  
GLAZING TYPE - Opaque



MOD - K39  
OPAQUE + RESTRICTED OPENING  
ID - 002 SHGC 0.58

**Wa2.07**

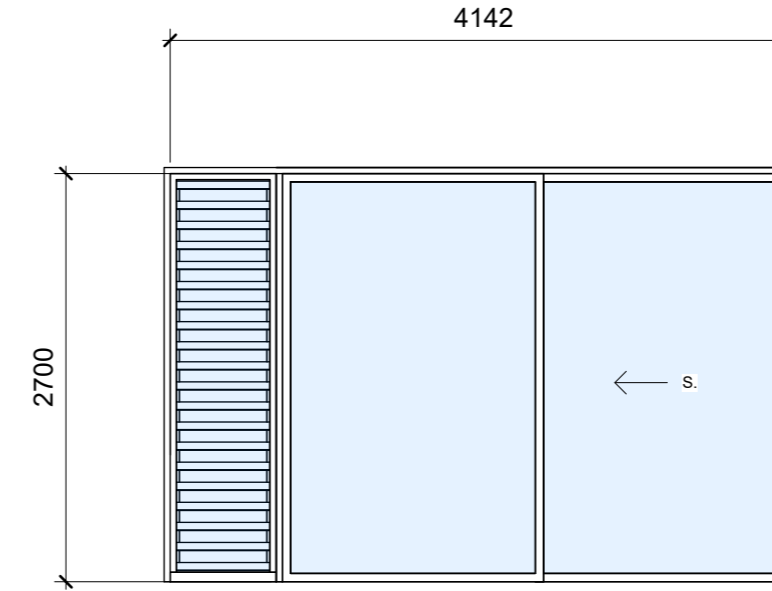
FRAME TYPE - Aluminium  
FRAME COLOUR - Dark grey  
GLAZING TYPE - Opaque



DOUBLED GLAZED  
ID - 002 SHGC 0.58

**Wa2.11**

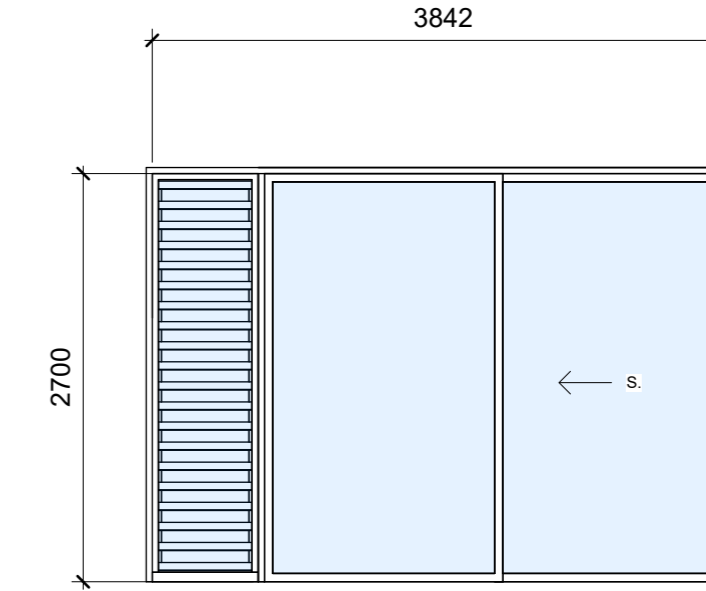
FRAME TYPE - Aluminium  
FRAME COLOUR - Dark grey  
GLAZING TYPE - Double clear



DOUBLED GLAZED  
ID - 002 SHGC 0.58

**Wa2.13**

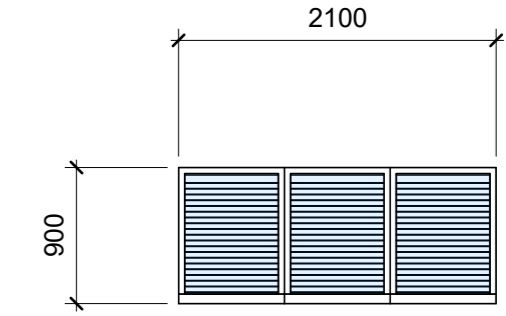
FRAME TYPE - Aluminium  
FRAME COLOUR - Dark grey  
GLAZING TYPE - Double clear



DOUBLED GLAZED  
ID - 002 SHGC 0.58

**Wa2.14**

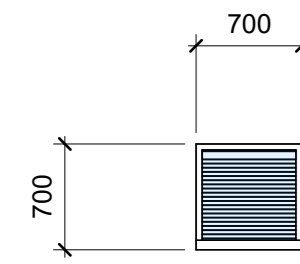
FRAME TYPE - Aluminium  
FRAME COLOUR - Dark grey  
GLAZING TYPE - Double clear



MOD - K40  
ID - 002 SHGC 0.58

**Wa2.15**

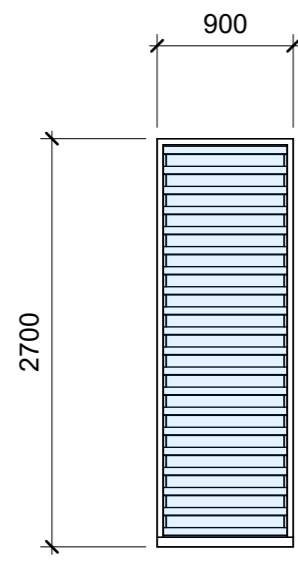
FRAME TYPE - Aluminium  
FRAME COLOUR - Dark grey  
GLAZING TYPE - Single clear



MOD - K41  
ID - 002 SHGC 0.58

**Wa2.17**

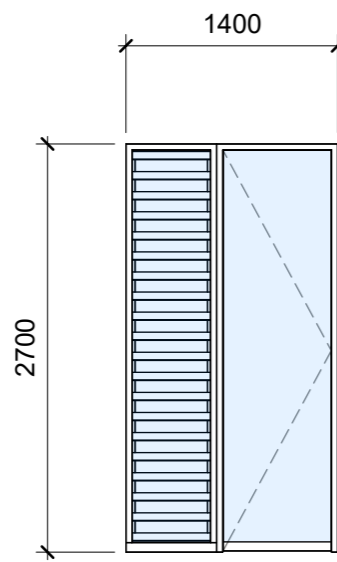
FRAME TYPE - Aluminium  
FRAME COLOUR - Dark grey  
GLAZING TYPE - Single clear



MOD - K42  
ID - 002 SHGC 0.58

**Wa2.x**

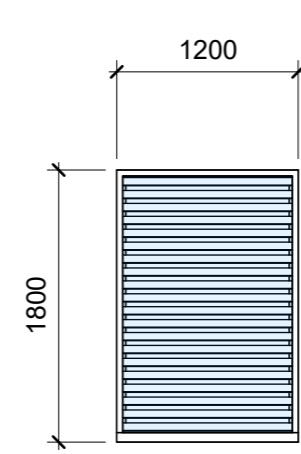
FRAME TYPE - Aluminium  
FRAME COLOUR - Dark grey  
GLAZING TYPE - Single clear



MOD - K43  
ID - 002 SHGC 0.58

**Wa2.21**

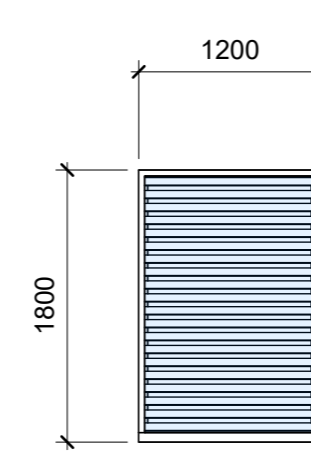
FRAME TYPE - Aluminium  
FRAME COLOUR - Dark grey  
GLAZING TYPE - Single clear



MOD - K44  
ID - 002 SHGC 0.58

**Wa2.22**

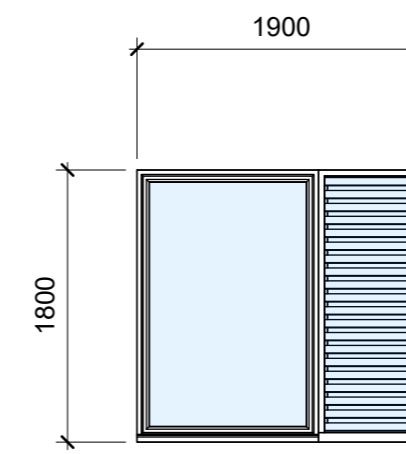
FRAME TYPE - Aluminium  
FRAME COLOUR - Dark grey  
GLAZING TYPE - Single clear



MOD - K45  
ID - 002 SHGC 0.58

**Wa2.24**

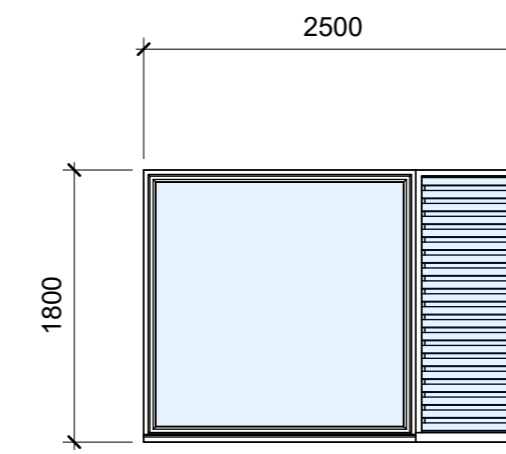
FRAME TYPE - Aluminium  
FRAME COLOUR - Dark grey  
GLAZING TYPE - Single clear



MOD - K46  
OPAQUE  
ID - 002 SHGC 0.58

**Wa2.25/Wa2.27**

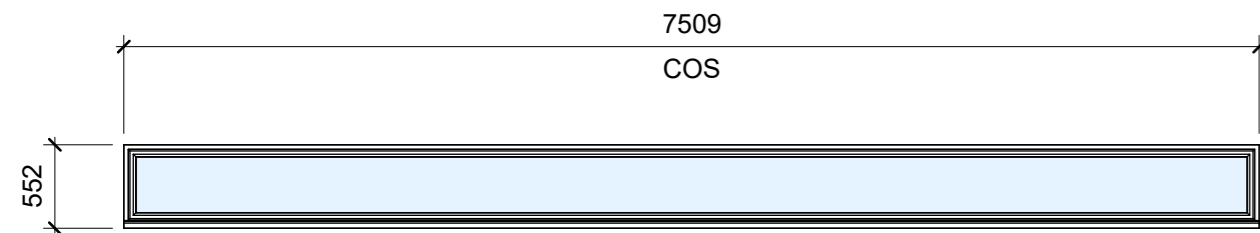
FRAME TYPE - Aluminium  
FRAME COLOUR - Dark grey  
GLAZING TYPE - Opaque



MOD - K47  
ID - 002 SHGC 0.58

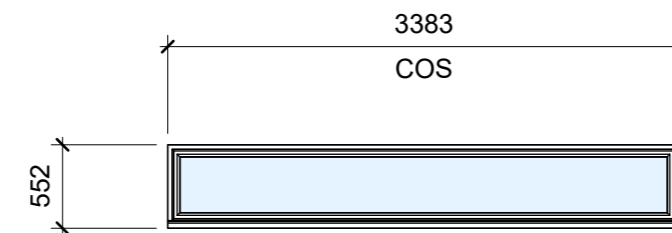
**Wa2.26**

FRAME TYPE - Aluminium  
FRAME COLOUR - Dark grey  
GLAZING TYPE - Single clear



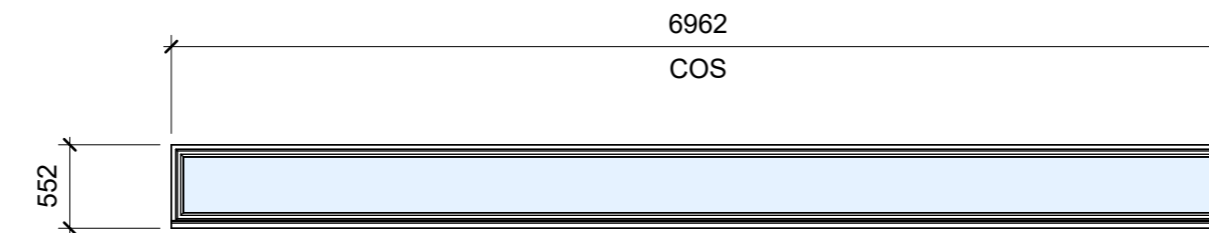
**Wa2.08\* TBC CLEARSTOREY**

FRAME TYPE - Silicone butt joint glass in channel top and bottom  
FRAME COLOUR - Dark grey  
GLAZING TYPE - Single clear



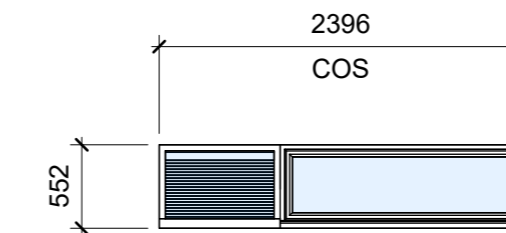
**Wa2.012\* TBC CLEARSTOREY**

FRAME TYPE - Silicone butt joint glass in channel top and bottom  
FRAME COLOUR - Dark grey  
GLAZING TYPE - Single clear



**Wa2.019\* TBC CLEARSTOREY**

FRAME TYPE - Silicone butt joint glass in channel top and bottom  
FRAME COLOUR - Dark grey  
GLAZING TYPE - Single clear

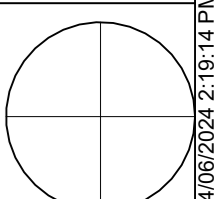


**Wa2.023\* TBC CLEARSTOREY**

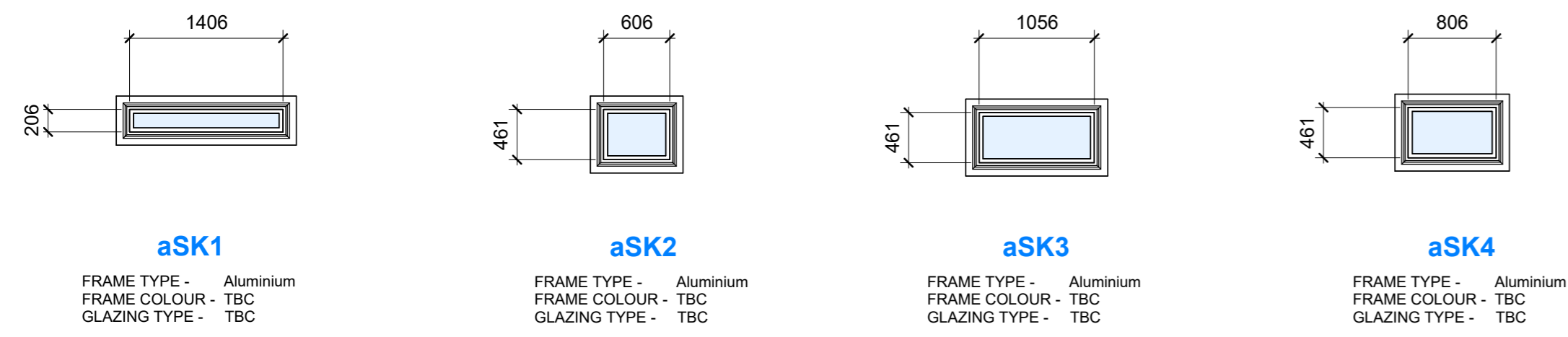
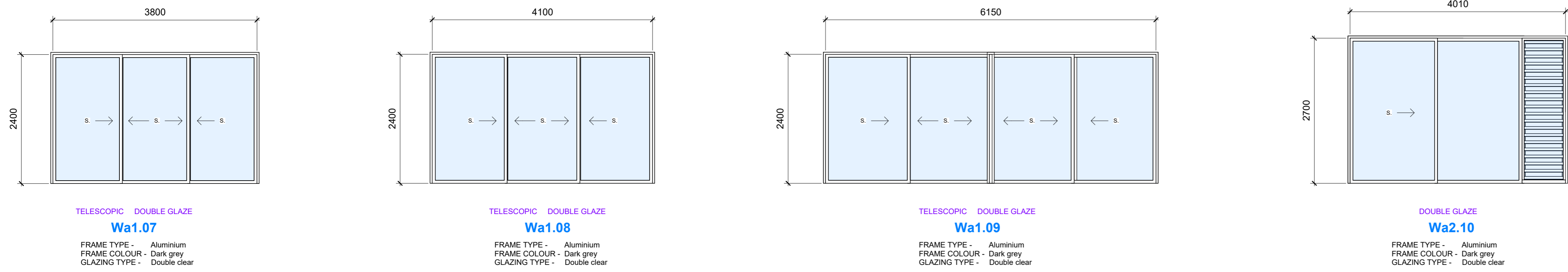
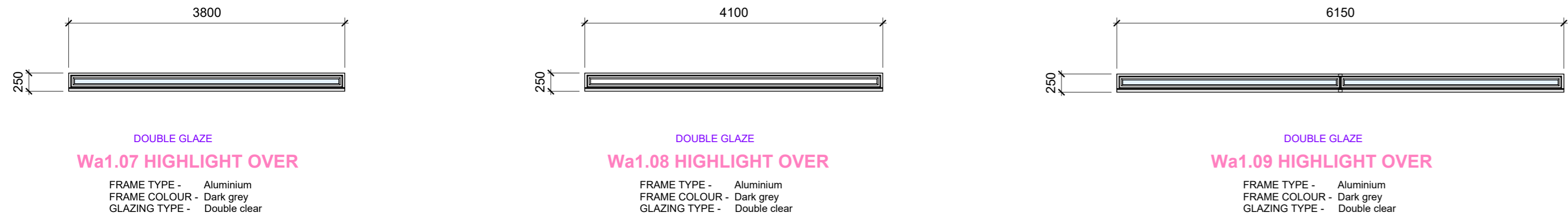
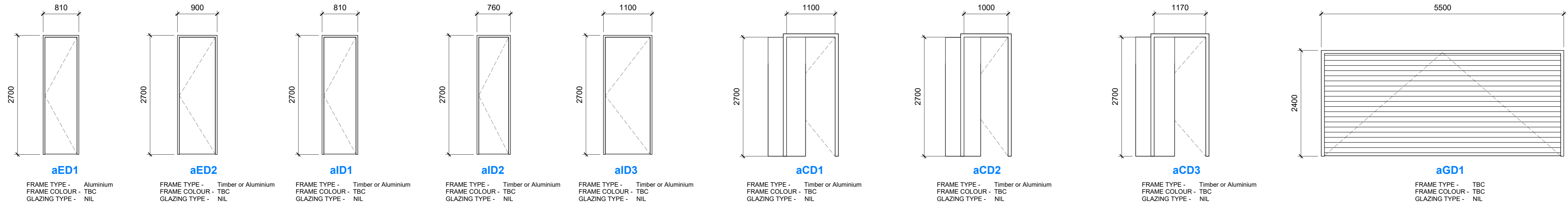
FRAME TYPE - Silicone butt joint glass in channel top and bottom  
FRAME COLOUR - Dark grey  
GLAZING TYPE - Single clear

**Window and door schedule 120A P3**

1 : 50







**Window and door schedule 120A P4 NOT SHOWN**  
1 : 50



ARCLAB PTY LTD  
A.C.N. 148472782  
PO Box 1239 Newport Beach  
NSW 2108 Australia  
Telephone +61 418 886 537  
email: arcl@arclab.com.au  
www.arclab.com.au

Sheet Title  
Window and Door schedule P4  
Project Address  
120, 120a PRINCE ALFRED  
PARADE NEWPORT

Client  
BFRD No: 1 PTY. LTD.  
Documentation  
Modification to consent

All works to be in accordance with Australian Standards, The Building Code of Australia, other relevant codes, and with Manufacturers' recommendations and instructions. Do not scale from drawings.  
Verify all dimensions on site prior to construction. The drawing is copyright and may not be used without written consent from ARCLAB PTY LTD.

Drawn	Scale	Sheet	Date	Job N°	Sheet N°	Issue/Revision
MJC	1 : 50	A 3	14/06/24	*	MOD117	MOD A - 14/06/24

