

Botanic Name	Common Name	Mature Height (m)	Pot Size	Qty
Acer palmatum	Japanese maple	5	100ltr	2
Aloe 'Bush Baby Yellow'	Bush Baby Yellow	0.4	200mm	25
Aloe 'Ferox'	Bitter Aloe	1	300mm	22
Alpinia nutans	Dwarf Cardamom	1.2	200mm	23
Aptenia cordifolia	Desert Rose	0.1	140mm	40
Asplenium 'Lime Wave'	Bird's Nest Fern	0.5-1.5	200mm	21
Banksia spinulosa	Hairpin banksia	0.6	300mm	18
Blechnum nudum	Fishbone Waterfern	0.4	200mm	12
Beaumontia grandiflora	Herald's Trumpet	Climber	300mm	1
Bougainvillea Sp.	Bougainvillea	Climber	300mm	21
Carpobrotus glaucescens	Pig Face	0.3	140mm	160
Cissus antarctica	Kangaroo Vine	0.3	200mm	83
Chamaerops humilis	European Fan Palm	3.5	400ltr	2
Cordyline australis	New Zealand Cabbage Tree	4	300mm	3
Cupaniopsis anacardioides	Tuckeroo	5-10	100L	2
Dichondra repens	Kidney weed	Ground cover	100mm	217
Grevillea robyn gordon	Robyn Gordon Grevillea	Ground cover	1500nm	9
Hibbertia scandens	Guinea Flower	Ground cover	140mm	15
Howea forsteriana	Kentia Palm	5-12	Advanced	6
Juncus sp.	Common Rush	Ground cover	140mm	16
Kalanchoe beharensis	Felt bush	0.5	300mm	9
Lomandra katrinus	Katrinus	0.7	200mm	12
Lomandra 'Tanika'	Fine Matt Grass	0.7	200mm	21
Monstera deliciosa	Fruit Salad Plant	0.5-1.5	200mm	7
Pandorea jasminoides	Bower Plant	Climber	200mm	16
Parthenocissus tricuspidata	Boston ivy	Climber	140mm	5
Philodendron 'Xanadu'	Xanadu	0.7	200mm	13
Plumeria sp.	Frangipani	3-5	200L	2
Rhapis excelsa	Lady Palm	4-5	45L	5
Syzygium resilience	Syzygium resilience	4	75Ltr	27
Strelitzia nicolai	Giant Bird Of Paradise	5-7	75L	16
Trachelospermum jasminoides	Star Jasmine	Climber	200mm	48
Viburnum sp.	Sweet Viburnum	3-4	400mm	12

Note: Landscape plan consists of 71% Proposed native plant species.

FRONT GARDEN

UPPER LEVEL

REAR LAWN

REAR GARDEN

POOL

PAVED

DECK

SPA

SEAT

TERRACED GARDEN

GARDEN

GARAGE ROOF

EXISTING LANDSCAPE TO BE RETAINED

10630 Rear South

15.10

15.00

14.96

8/0.3/4

15.25

15.28

15.27

15.72

15.25

14.85

14.90

15.62

15.66

19.75

19.79

17.26

17.36

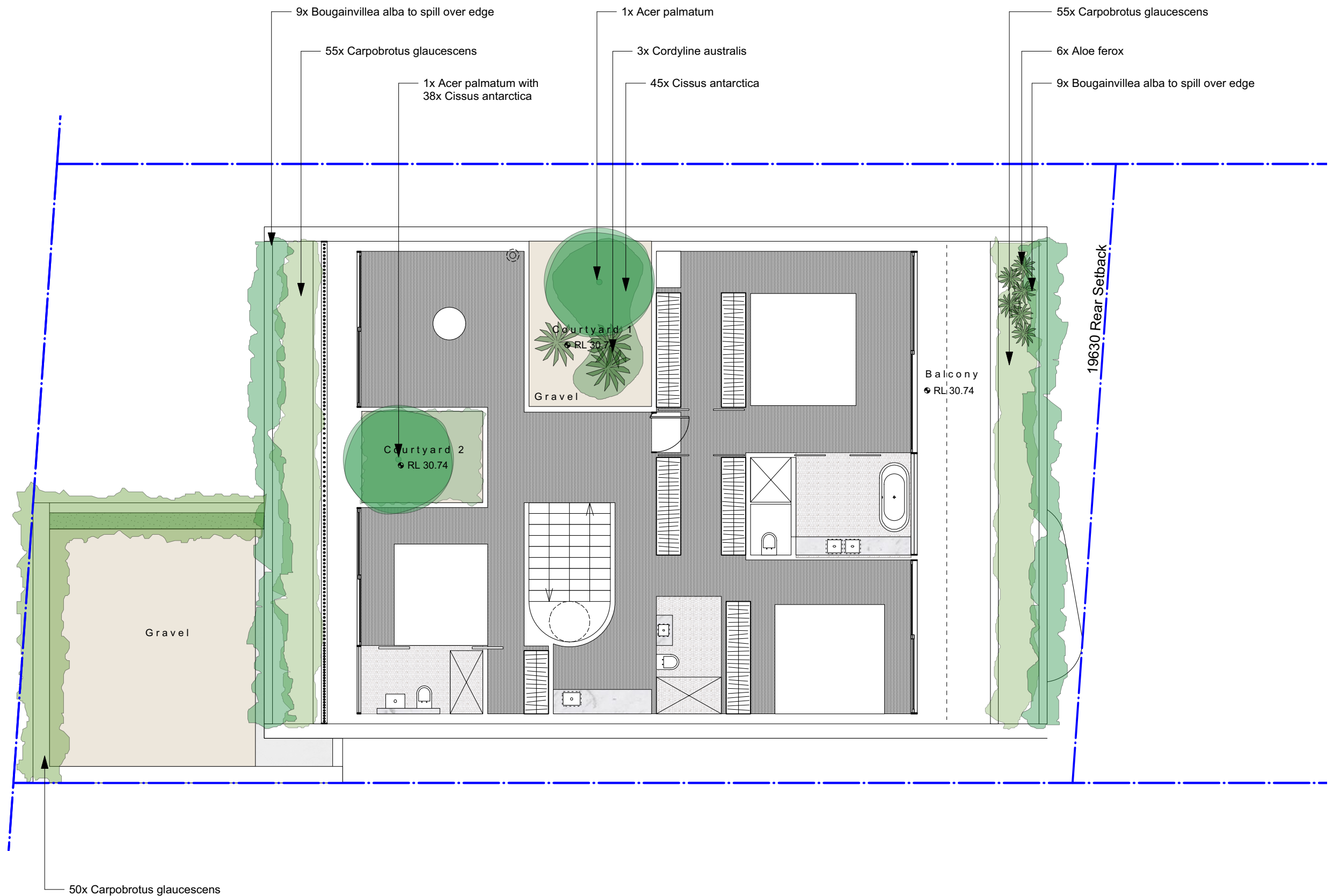
14.88 +

27.69

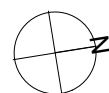
27.61

27.71

NOTE: It is recommended that the ameliorative conditions (pg. 30) and management recommendations (pg. 32) in the Terrestrial Biodiversity Report prepared on 07/02/20 by GIS Environmental Consultants be followed to limit disturbance during construction and to further reduce the impact of the proposal on potential bandicoot habitat and access regarding 44 Bower St, Manly.



DA LANDSCAPE PLANS



Project:
44 Bower St, Manly

Client:
Acet

Dwg no:
LP01-6819

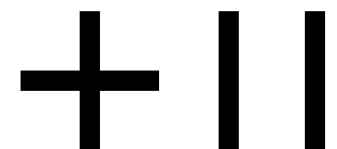
Title:
Landscape Plan
Level 1

Drawn by: TS
Checked: WD
Scale: 1:100@A3

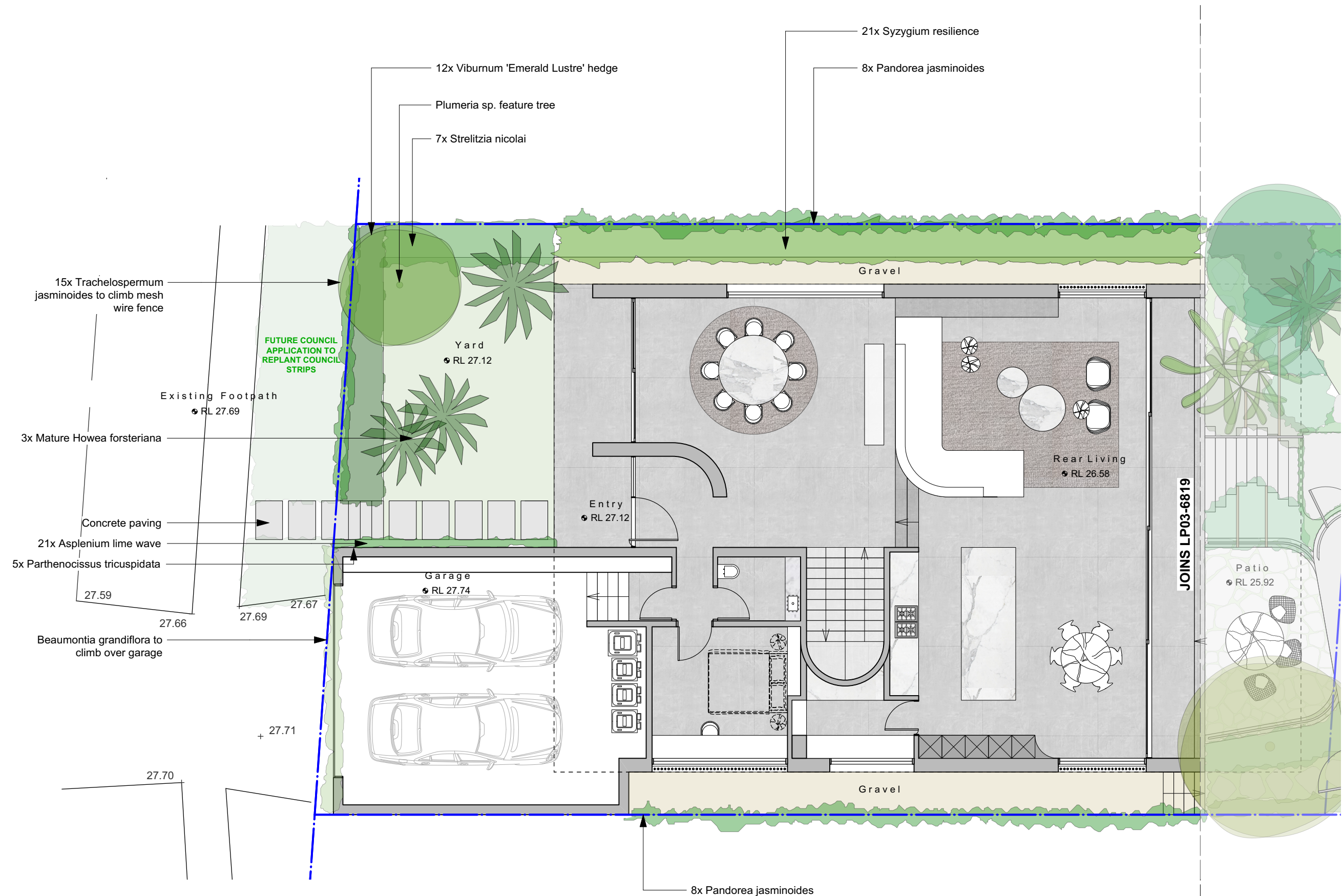
Issue: 01
Revision: B
Date: 17.02.2020

Landscape Design Sydney Tel: (02) 9316 9044
53 Cranbrook St Fax: (02) 9316 9055
Botany NSW 2019

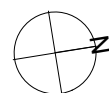
Figure dimensions shall take precedence over scale. Contractors must verify all dimensions on job before commencing any work or making shop drawings. This drawing is protected by copyright.



DANGAR
BARIN
SMITH



DA LANDSCAPE PLANS



Project:
44 Bower St, Manly

Client:
Acet

Dwg no:
LP02-6819

Title:
Landscape Plan
Ground

Drawn by: TS
Checked: WD
Scale: 1:100@A3

Issue: 01
Revision: B
Date: 17.02.2020

Landscape Design Sydney
53 Cranbrook St
Botany NSW 2019

(02) 9316 9044
Fax: (02) 9316 9055

Figure dimensions shall take precedence over scale. Contractors must verify all dimensions on job before commencing any work or making shop drawings. This drawing is protected by copyright.

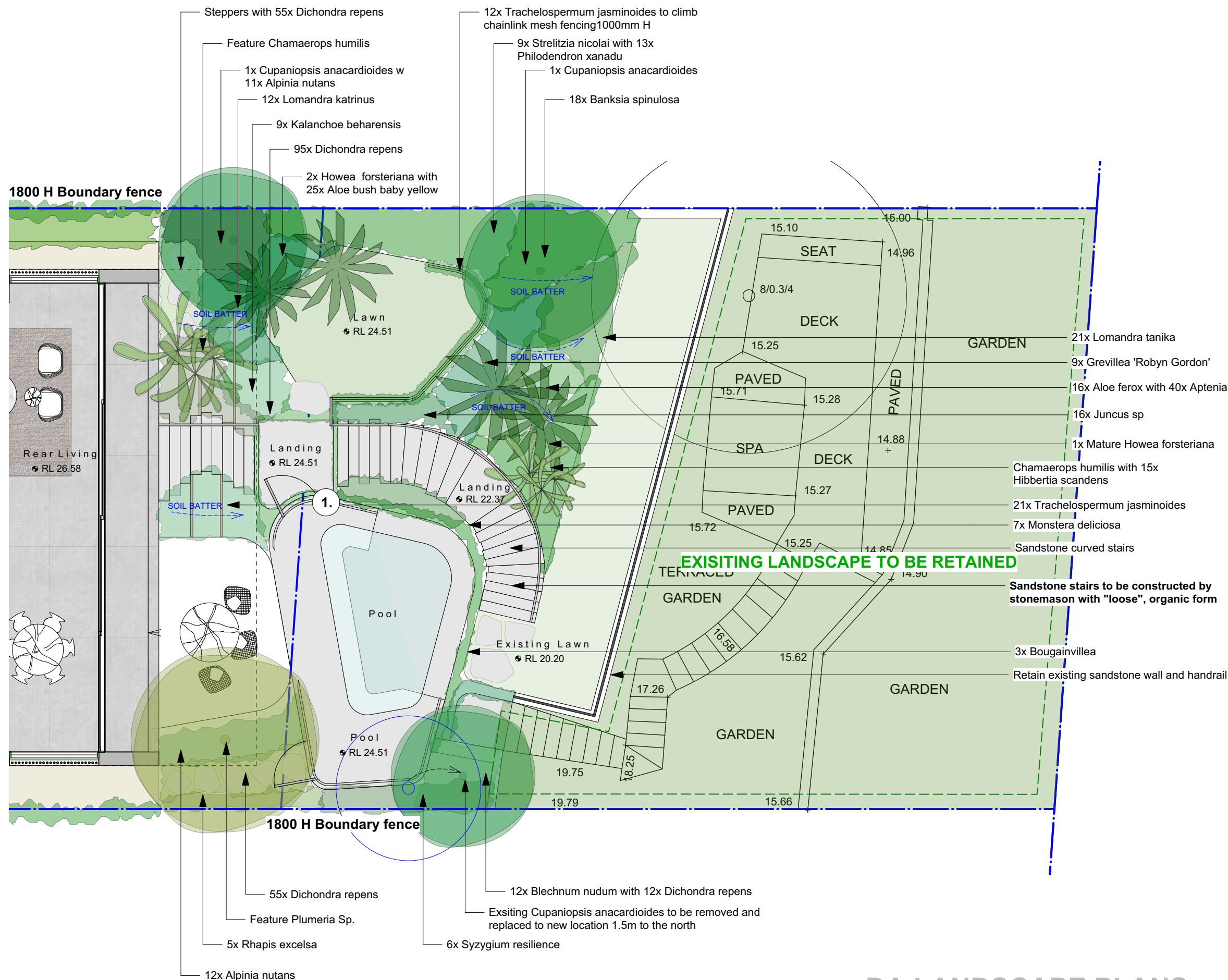


DANGAR
BARIN
SMITH

1. POOL FENCING:

AS2820-1993 "Gate units for private swimming pools"

-Bandicoots are to be excluded from the proposed pool area with pool fencing to have an integrated perspex barrier 300mm in height from the base gap of less than 120mm, so as to exclude bandicoots from entering the pool area



DA LANDSCAPE PLANS

Client:
Acret

Title:
Rear Landscape
Plan

Issue:	Revision:	Date:
01	B	17.02.2020

Figure dimensions shall take precedence over scale. Contractors must verify all dimensions on job before commencing any work or making shop drawings. This drawing is protected by copyright.