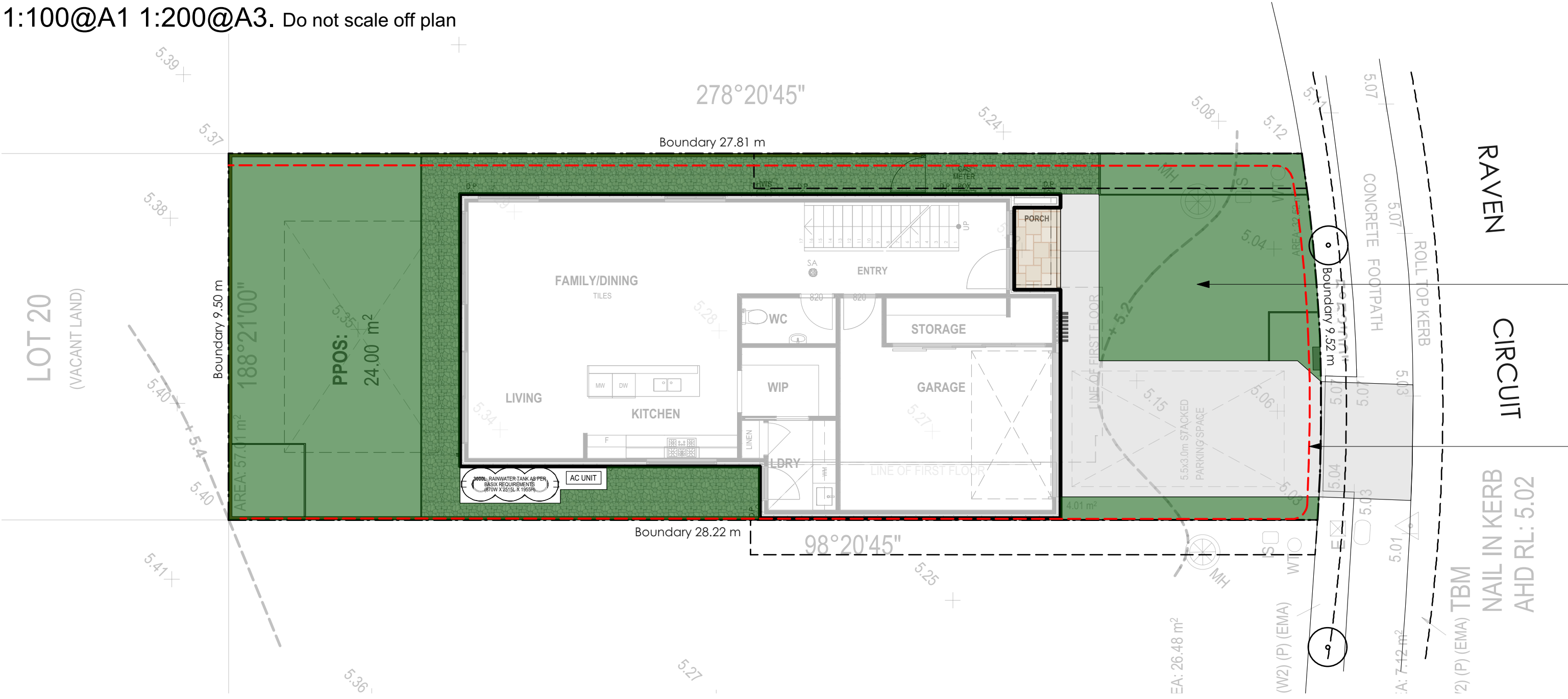
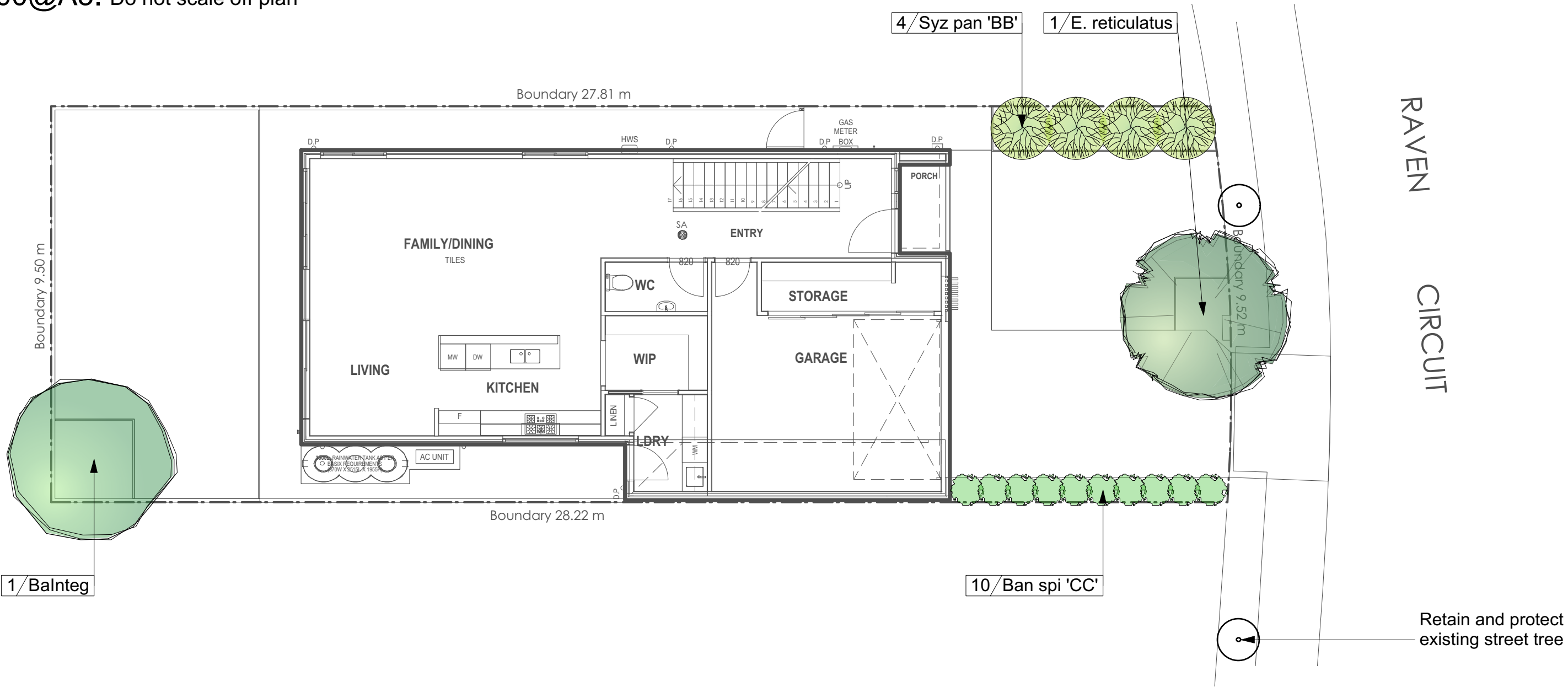


Site Plan
1:100@A1 1:200@A3. Do not scale off plan



Planting Plan
1:100@A1 1:200@A3. Do not scale off plan



BANKSIA



BANKSIA SPINULOSA 'CC'



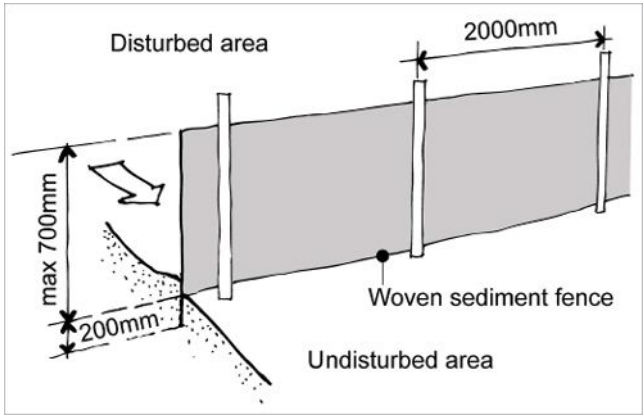
ELAEOCARPUS



SYZYGIIUM 'BACKYARD BLISS'

| ID | Quantity | Latin Name | Common Name | Scheduled Size | Mature Height | Mature Spread |
|----------------|----------|---------------------------------------|-----------------------------|----------------|---------------|---------------|
| Balnteg | 1 | Banksia integrifolia | Coastal Banksia | 25lt | 8 - 12m | 3.5 - 6m |
| Ban spi 'CC' | 10 | Banksia spinulosa 'Cherry Candles' | Banksia 'Cherry Candles' | 200mm | 0.5 - 1m | 0.5 - 1m |
| E. reticulatus | 1 | Elaeocarpus reticulatus | Blueberry Ash | 25lt | 5 - 10m | 3.5 - 6m |
| Syz pan 'BB' | 4 | Syzygium paniculatum 'Backyard Bliss' | Lillypilly 'Backyard Bliss' | 200mm | 5 - 10m | 6 - 10m |

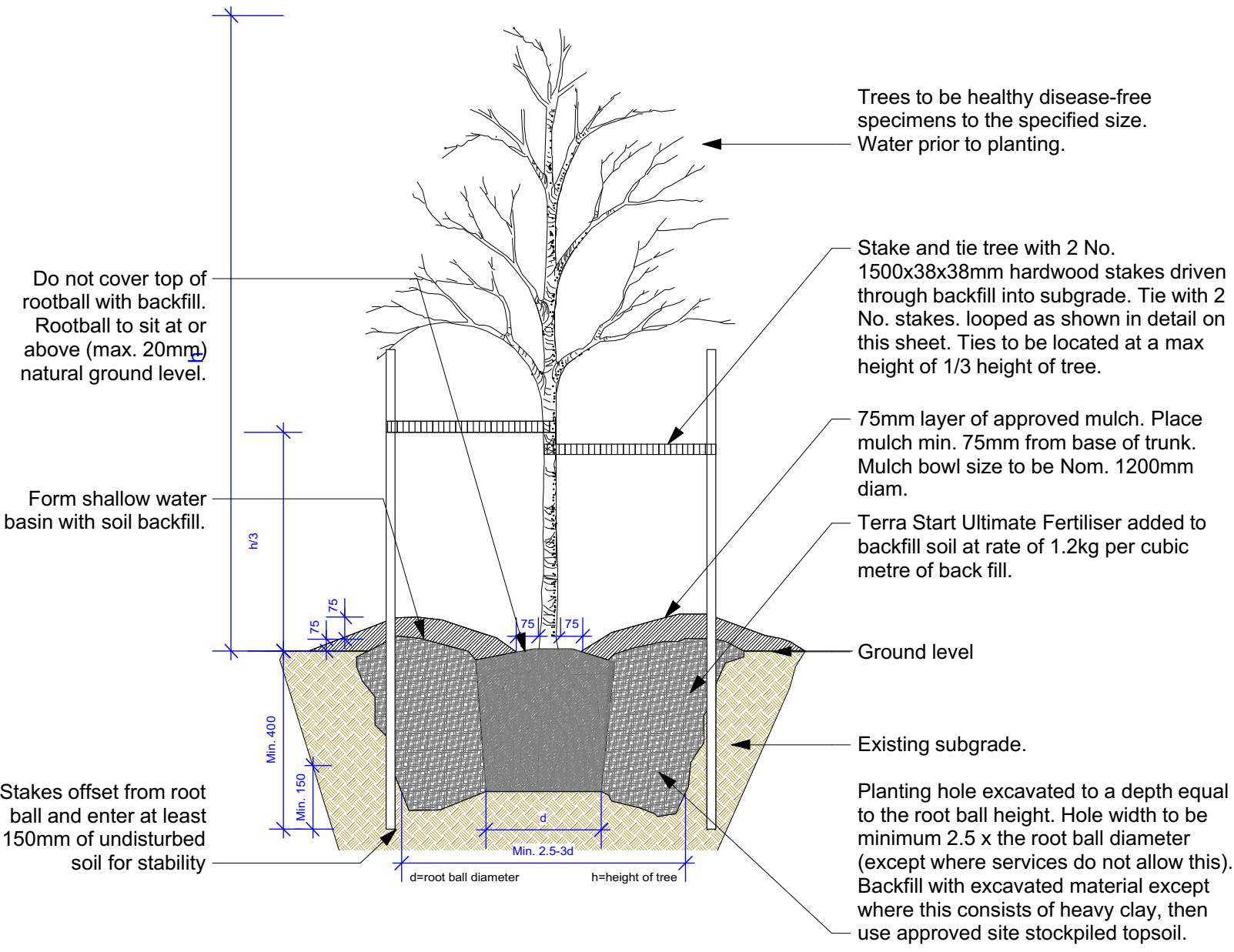
| AREA CALCULATION | | |
|----------------------------|-----------|------------|
| | AREA (m2) | PERCENTAGE |
| Site | 267.8 | |
| Landscape total as per DCP | 116.03 | 43.33% |



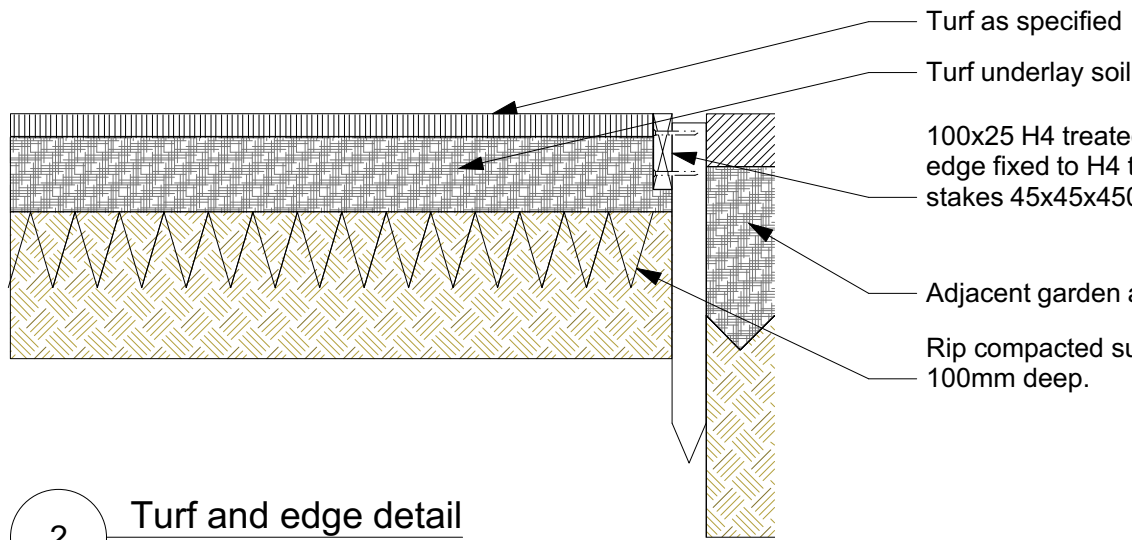
Sedimentation Control Fence
Not to scale.
Source: www.yourhome.gov.au

Green shaded area indicates compliant landscape area

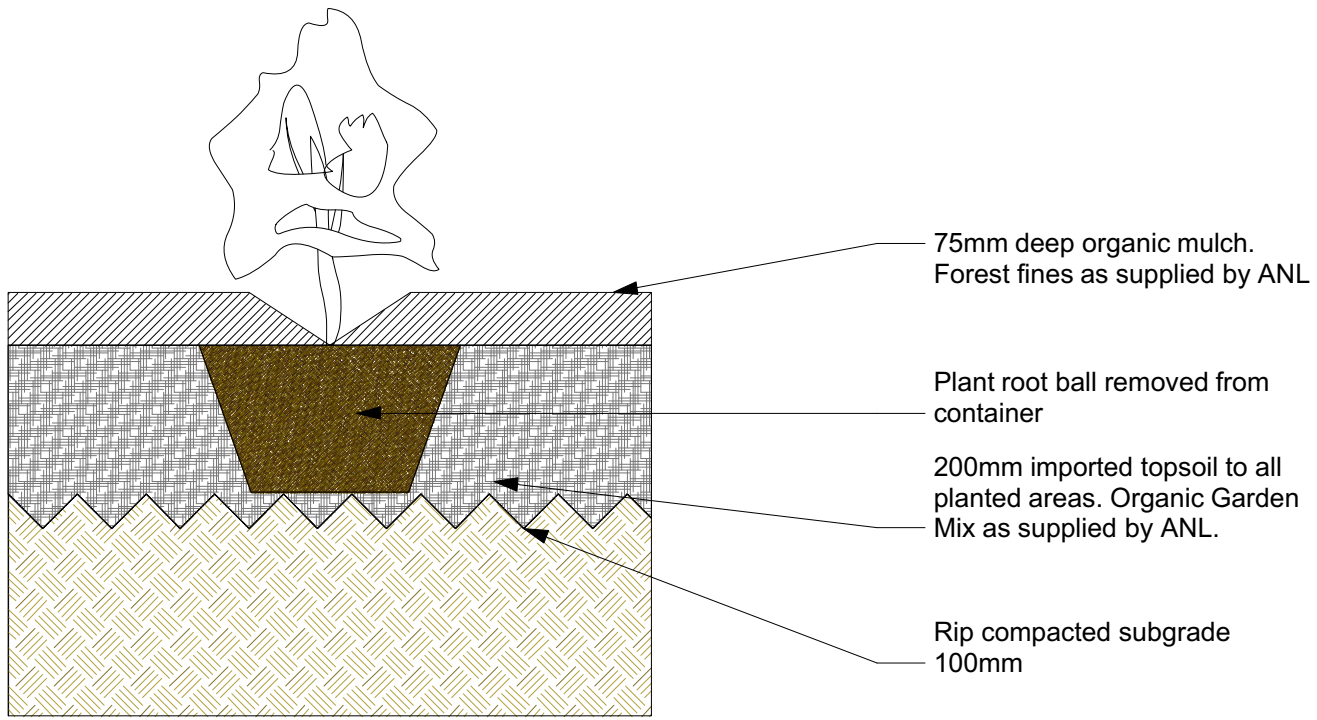
Red dashed line indicates sedimentation control fence to be implemented throughout construction to appropriate standard



1 Tree planting
Scale: 1:20



2 Turf and edge detail
Scale: 1:10

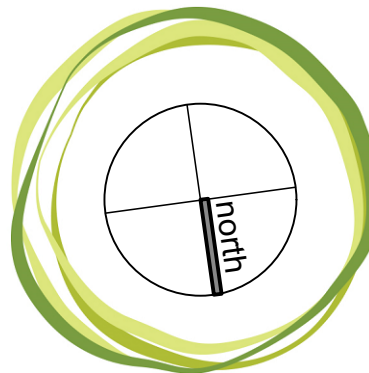


3 Shrub planting
Scale: 1:10

Legend

- MULCH AREA
- TURF AREA
- TIMBER DECKING
- CONCRETE PAVING
- UNIT PAVING
- STAIRS
- PEBBLE
- GRAVEL
- COBBLESTONE
- TIMBER
- WATER
- MASONRY RETAINING WALL
- STONE RETAINING WALL
- TIMBER RETAINING WALL
- BOULDER RETAINING WALL
- SITE OR WORKS BOUNDARY
- PROPOSED LEVEL
- TOP OF WALL LEVEL
- MATERIAL NAME
- SURFACE FALL DIRECTION
- SURFACE DRAINS
- SURVEY (50% GREY LINES)
- EXISTING TREE TO RETAIN
- EXISTING TREE TO REMOVE
- EXISTING ROCK OUTCROP

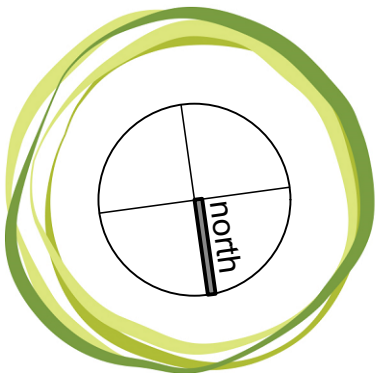
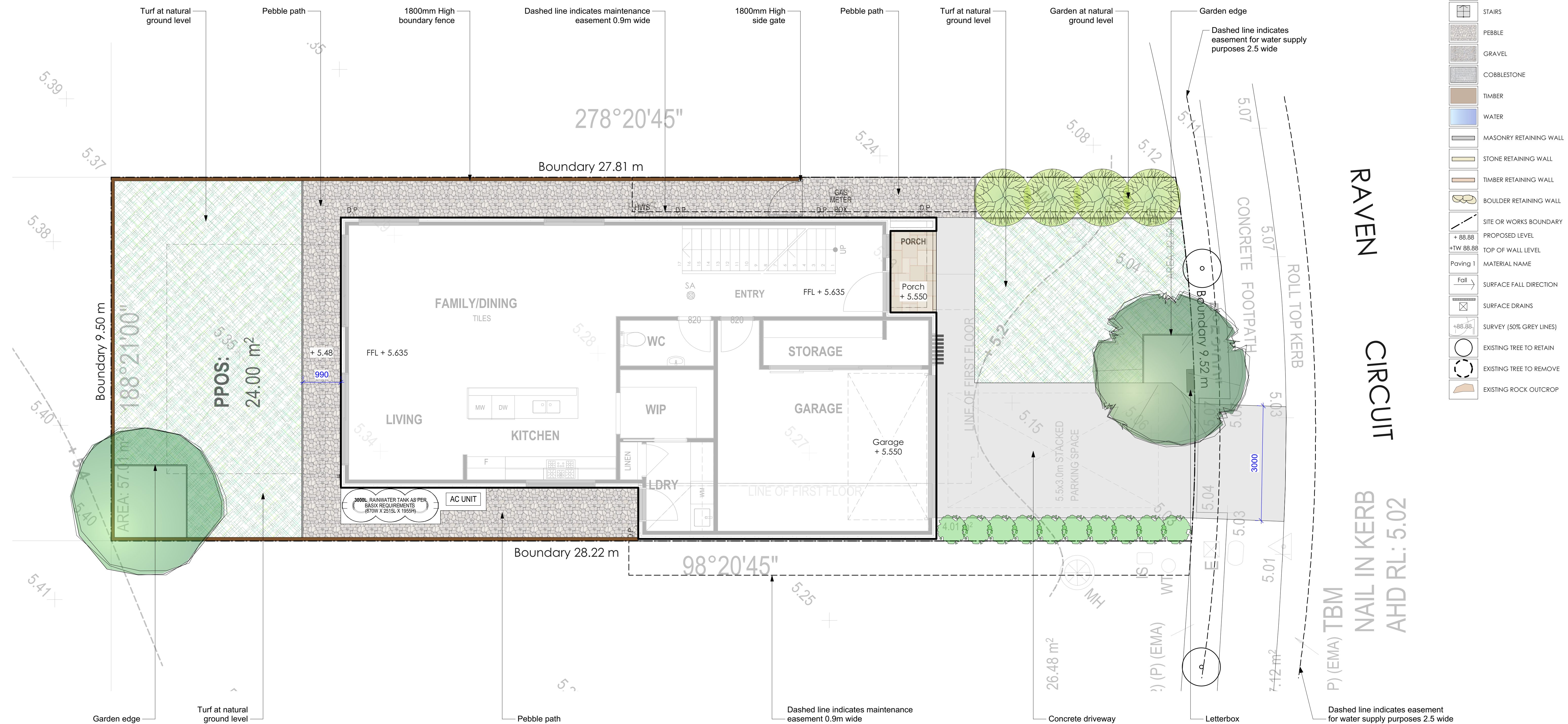
Notes:
>Do not scale off plan.
>Contractors to check all measurements onsite before quoting or commencing work.
>If abnormalities arise, contact the Landscape Architect.
>This design is copyright and is not to be reproduced in anyway without written consent of Jamie King Landscape Architect.



JAMIE KING
LANDSCAPE ARCHITECT
DESIGN • APPROVE • MANAGE

| | | | | |
|------------|----------|-------------------------|-----------|--------------------------------|
| A | 23/12/22 | DRAFT issue for review. | PROJECT # | 23051 |
| ISSUE | DATE | REVISION | PROJECT | Lot 5 Raven Circuit Warriewood |
| CLIENT | DATE # | See above | DWG # | 23051 |
| SCALE @ A1 | See Plan | | | Sht-101 |
| DWG | DRAWN | RAR | | |
| CHKD | JK | REVISION | | |

Jamie King Landscape Architect
22 Coonanga Road, Avalon, NSW, 2107
T: 0421 517 991
W: www.jamieking.com.au
E: jamie@jamieking.com.au



JAMIE KING
LANDSCAPE ARCHITECT
DESIGN • APPROVE • MANAGE

| | | | | |
|---------|--------------------------------|-------------------------|-----------|------------------------|
| A | 23/12/22 | DRAFT issue for review. | PROJECT # | 23051 |
| ISSUE | DATE | REVISION | CLIENT | Fu Shun Realty PTY LTD |
| PROJECT | Lot 5 Raven Circuit Warriewood | DATE # | See above | DWG # |
| CLIENT | Fu Shun Realty PTY LTD | SCALE @ A1 | See Plan | Sht-102 |
| DWG | Landscape Detail Plan | DRAWN | RAR | |
| CHKD | JK | REVISION | | |

Jamie King Landscape Architect
22 Coonanga Road, Avalon, NSW, 2107
T: 0421 517 991
W: www.jamieking.com.au
E: jamie@jamieking.com.au