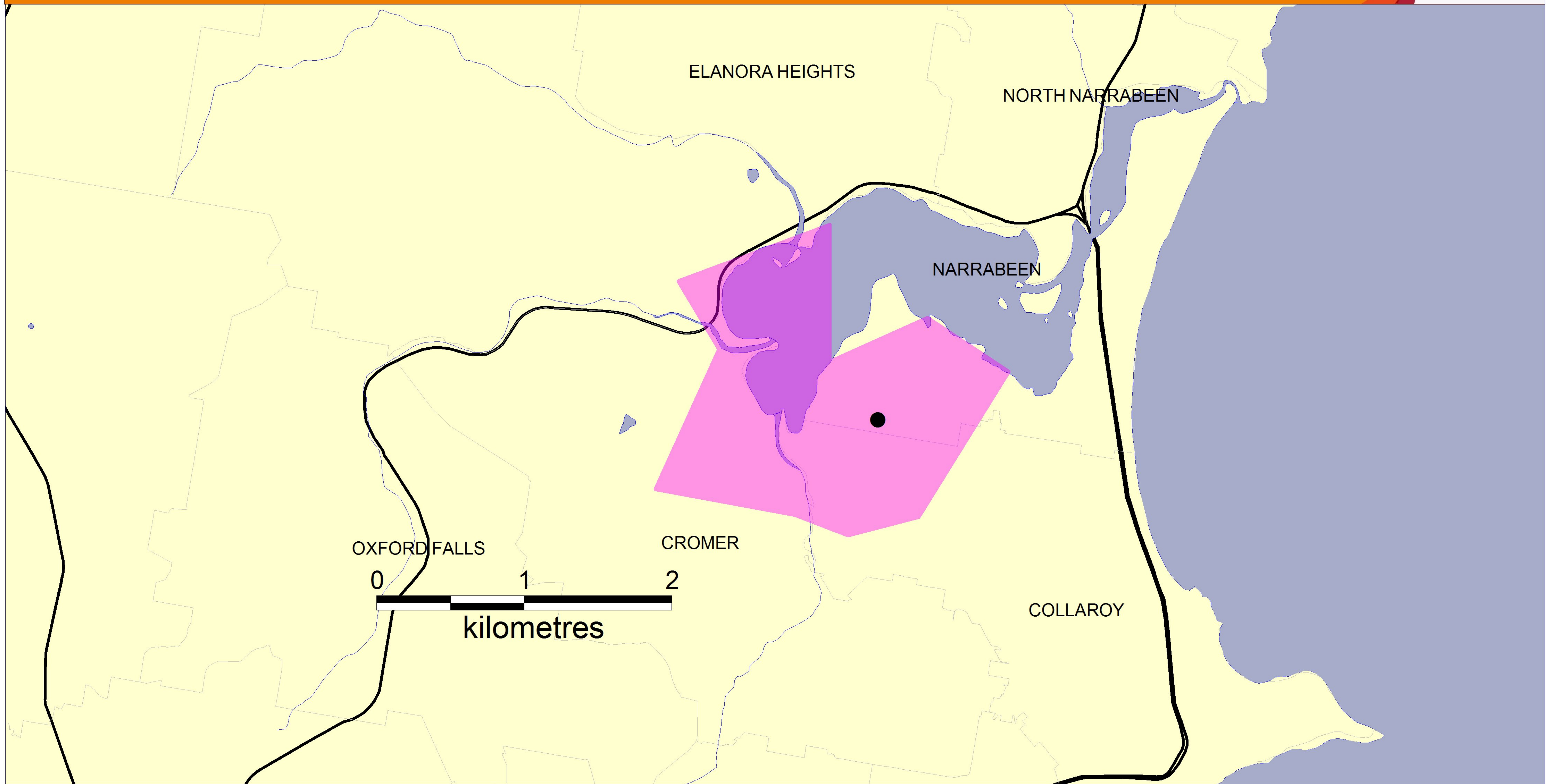


# Narrabeen Lakeshore Drive - Target Enhancement Area



## Legend

 Target Enhancement Area

*Within The Pink Polygon, telstra's mobile coverage and capacity is expected to improve significantly for the community.*

*Customers should be aware that the Telstra mobile coverage maps displayed have been created using tools that predict the likely areas of coverage. Not every particular location within the identified coverage areas has been individually tested for coverage. This means that while the footprint of coverage outlined on the maps is generally accurate, there will be specific areas described as being within a coverage area where a customer's device will not work. This is a common characteristic of wireless systems. For example, coverage could be degraded or not existent in specific locations due to certain physical structures or geographic features or as a result of the device used. Physical structures which may block or inhibit coverage could include basements, lifts, underground car parks, concrete buildings, tunnels and road cuttings. Geographic features which may block or inhibit coverage could include formations such as hills and mountains or even trees.*

*Data speeds experienced on Telstra's mobile networks may be affected by network availability, the type and configuration of customer equipment, the performance of external networks (for example the Internet), the signal strength of the device used and other factors such as the type of application.*