

5 Kooloorra Avenue, Freshwater

Foundation Inspection: House Foundations

The site was inspected on the 27th June, 2024.

At the time of the inspection, the strip footings on the uphill side were complete and the shallow pier and beam footings on the downhill side were almost complete with a few more piers to be done. The as completed piers were taken to 0.3 to 0.6m below the strip footing. The piers were added to the downhill side to keep the bearing material more uniform across the sloping site.

Water was sitting on the foundation surfaces. As discussed with the Forman, as the bearing pressure of clay/clayey rock reduces significantly when it is saturated, just prior to the pour the soft wet layer of clay is to be scraped from the footing surface. If this is not feasible due to timing issues of the pour, a blinding layer of concrete can be added immediately after the soft clays have been scraped off the footing surface to seal it.

Provided the above recommendations are carried out the foundation material is considered adequate to support the likely loads from the house.

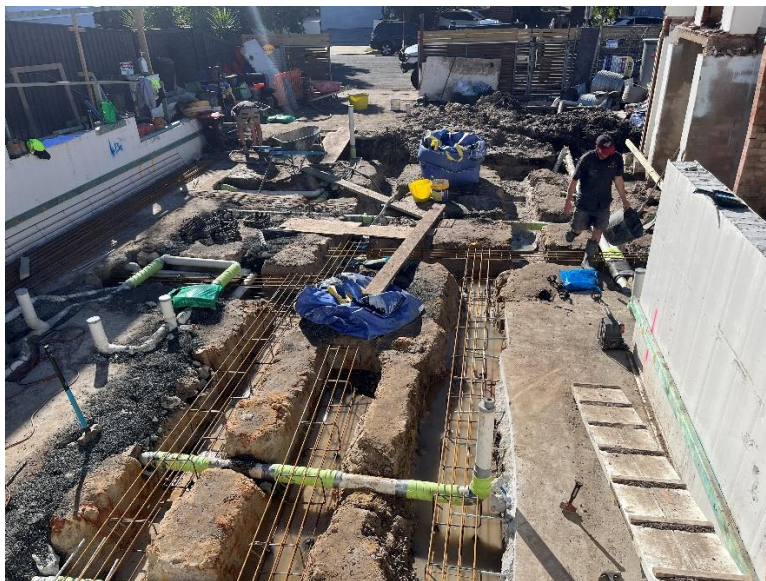


Photo 1

White Geotechnical Group Pty Ltd.



Ben White M.Sc. Geol.,
AIG., RPGeo Geotechnical & Engineering.
No. 10306
Engineering Geologist

