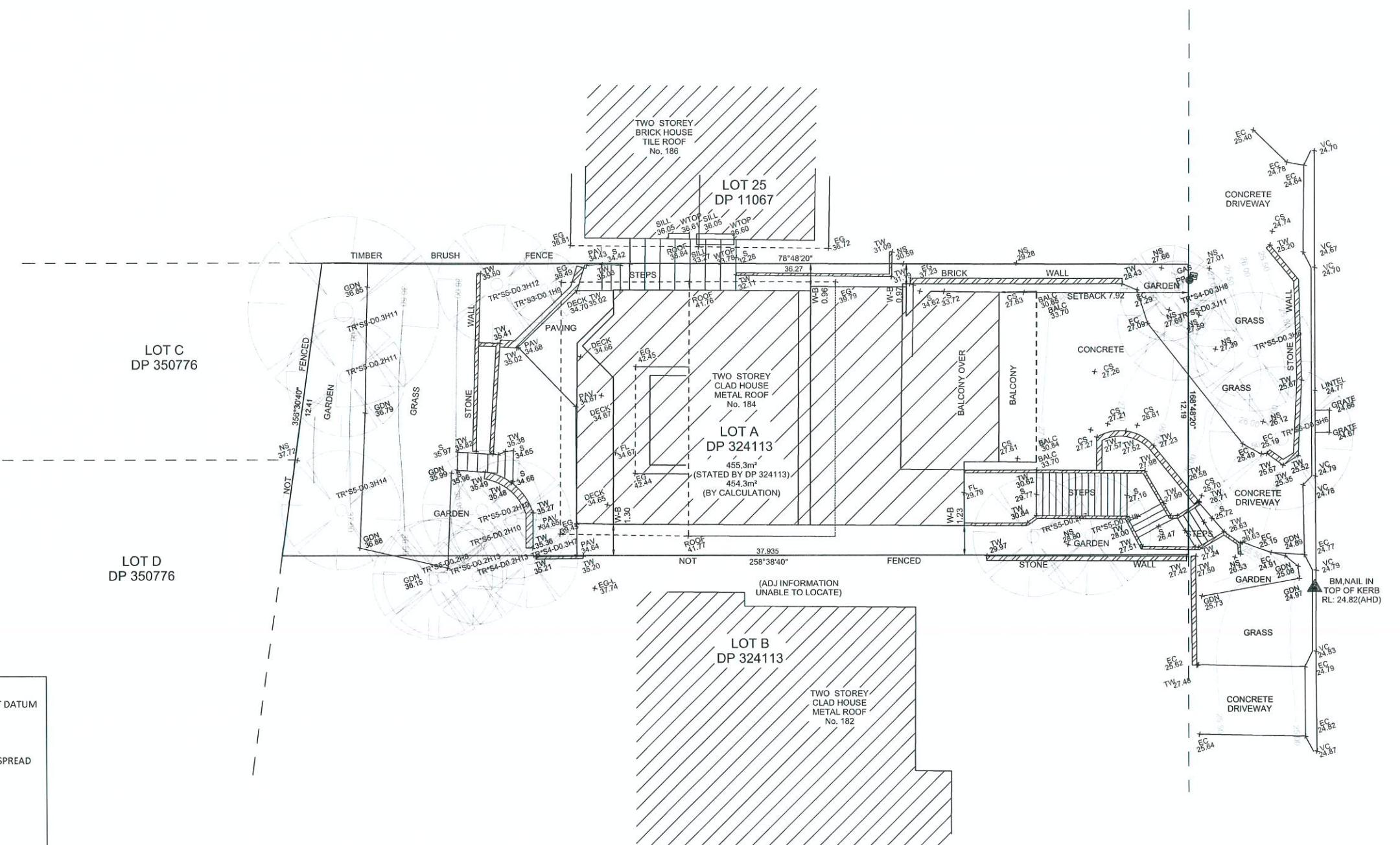


WHALE BEACH ROAD



LEGEND:

| | |
|-------|-------------------------|
| AHD | AUSTRALIAN HEIGHT DATUM |
| AWN | AWNING |
| BM | BENCH MARK |
| CONC | CONCRETE |
| CS | CONCRETE SURFACE |
| D/H/S | DIAMETER/HEIGHT/SPREAD |
| D | DOOR |
| EC | EDGE OF CONCRETE |
| EG | EAVE & GUTTER |
| FL | FLOOR LEVEL |
| GDN | GARDEN |
| HYD | HYDRANT |
| IL | INVERT LEVEL |
| LH | LAMP HOLE |
| NS | NATURAL SURFACE |
| PAV | PAVERS |
| PP | POWER POLE |
| RL | REDUCED LEVEL |
| S | STEPS |
| SL | SURFACE LEVEL |
| SILL | WINDOW SILL |
| SV | STOP VALE |
| TEL | TELSTRA PIT |
| TK | TOP OF KERB |
| TW | TOP OF WALL |
| VC | VEHICLE CROSSING |
| W | WINDOW |
| WM | WATER METER |
| WTOP | TOP OF WINDOW |
| W-B | WALL TO BOUNDARY |



MARK ANTHONY REID
(REGISTERED SURVEYOR)
SURVEYOR ID No. SU000183

THE SUBJECT TITLE NOTES :

- RESERVATIONS AND CONDITIONS IN THE CROWN GRANT(S)
- AP773618 MORTGAGE TO NATIONAL AUSTRALIA BANK LIMITED

NOTES:

A) SERVICES SHOWN HAVE BEEN DERIVED FROM VISUAL EVIDENCE APPARENT AT THE TIME OF SURVEY. SERVICES MAY EXIST WHICH ARE NOT SHOWN. THE RELEVANT SERVICE AUTHORITY SHOULD BE CONTACTED TO VERIFY THE EXISTENCE AND POSITION OF SERVICES PRIOR TO THE COMMENCEMENT OF ANY CONSTRUCTION OR EXCAVATION.

B) DIAMETER, HEIGHT & SPREAD OF TREES ARE APPROXIMATE ONLY.

C) LEVELS SHOWN ARE OF AUSTRALIAN HEIGHT DATUM. ORIGIN OF LEVELS - SSM 11125, RL 18.453(AHD), CLASS LB.

D) USE STATED DIMENSIONS. DO NOT SCALE.

E) THESE NOTES FORM PART OF THIS PLAN AND CANNOT BE REMOVED.

F) NO COVENANTS AND/OR RESTRICTIONS HAVE BEEN INVESTIGATED BY C & A SURVEYORS PTY LTD.

© THIS PLAN AND THE INFORMATION CONTAINED HEREIN REMAINS THE PROPERTY OF C & A SURVEYORS NSW PTY LTD. IT MUST NOT BE COPIED IN WHOLE OR PART, AND IS NOT TO BE USED FOR ANY PURPOSE OTHER THAN FOR THAT WHICH IT HAS BEEN PREPARED, WITHOUT THE WRITTEN CONSENT OF C & A SURVEYORS NSW PTY LTD. THIS PLAN HAS BEEN PREPARED FOR THE SOLE USE OF THE INSTRUCTING PARTY.

C & A SURVEYORS NSW P/L
Ph:9630 9299 Fax:9638 1199
30 GROSE STREET,
PARRAMATTA NSW 2150
info@candasurveyors.com.au
www.candasurveyors.com.au

DETAIL & BOUNDARY IDENTIFICATION SURVEY
OF LOT A IN DP 324113, LOCATED AT
No.184, WHALE BEACH ROAD, WHALE BEACH.

| INSTRUCTING PARTY: SHAUN WRIGHT | | |
|---------------------------------|-----------------|------------|
| Revision No | Description | Date |
| 01 | DRAWN FOR ISSUE | 19/03/2021 |
| | | |
| | | |
| | | |

| | | | |
|--------------|-----------------|--------------|----------|
| DATUM: | AHD | SURVEYED BY: | RT |
| SURVEY DATE: | 18/03/2021 | DRAWN BY: | SE |
| DATE DRAWN: | 19/03/2021 | SCALE: | 1:100@A1 |
| REFERENCE: | 16925-21 DET/ID | SHEET: | 1 OF 1 |