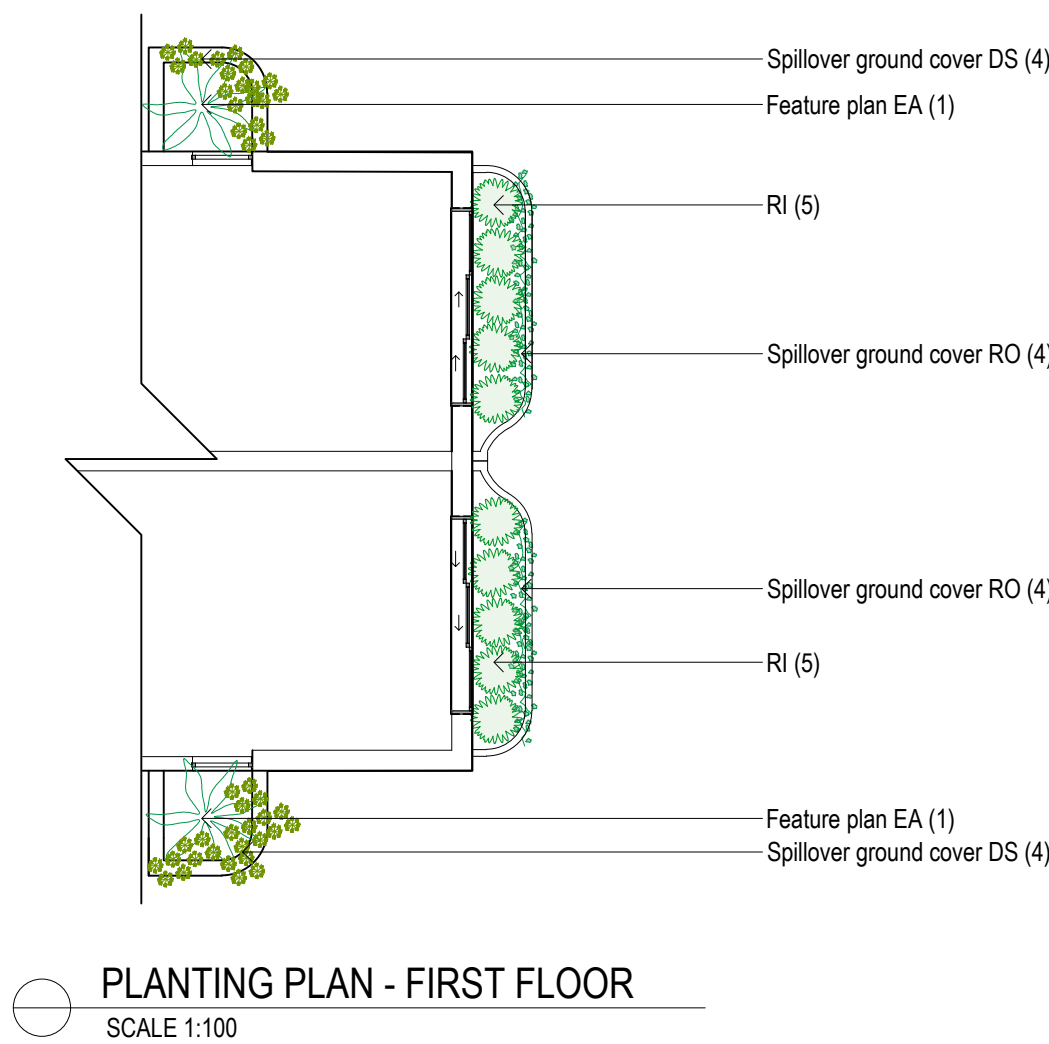
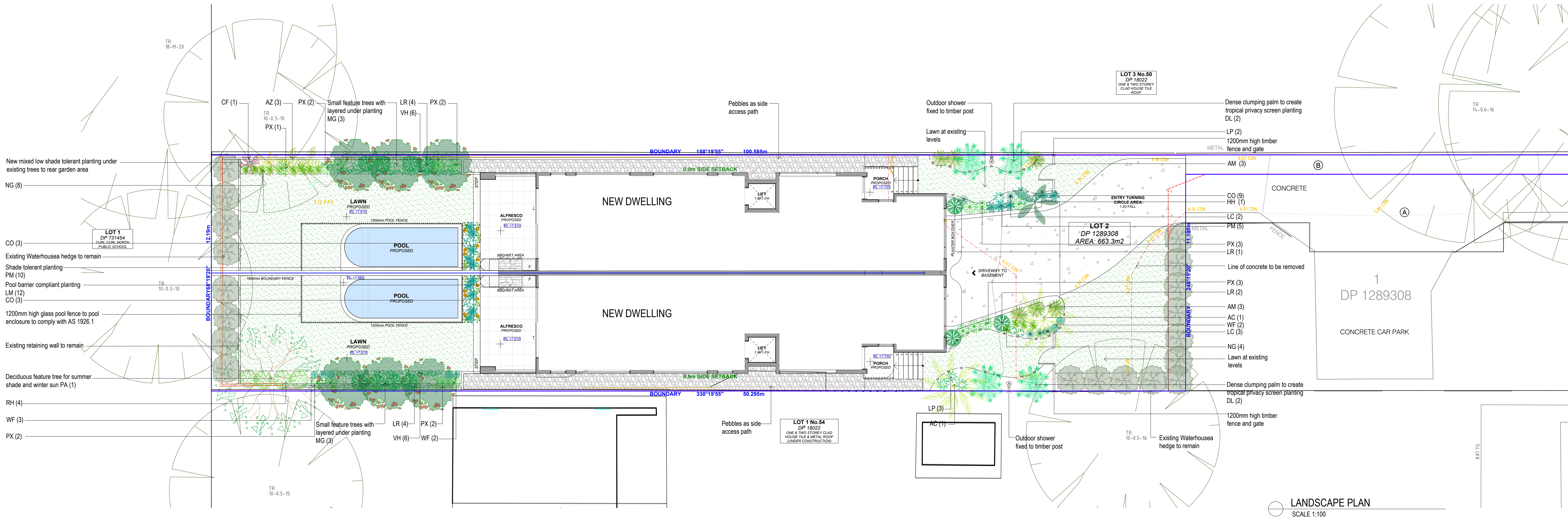
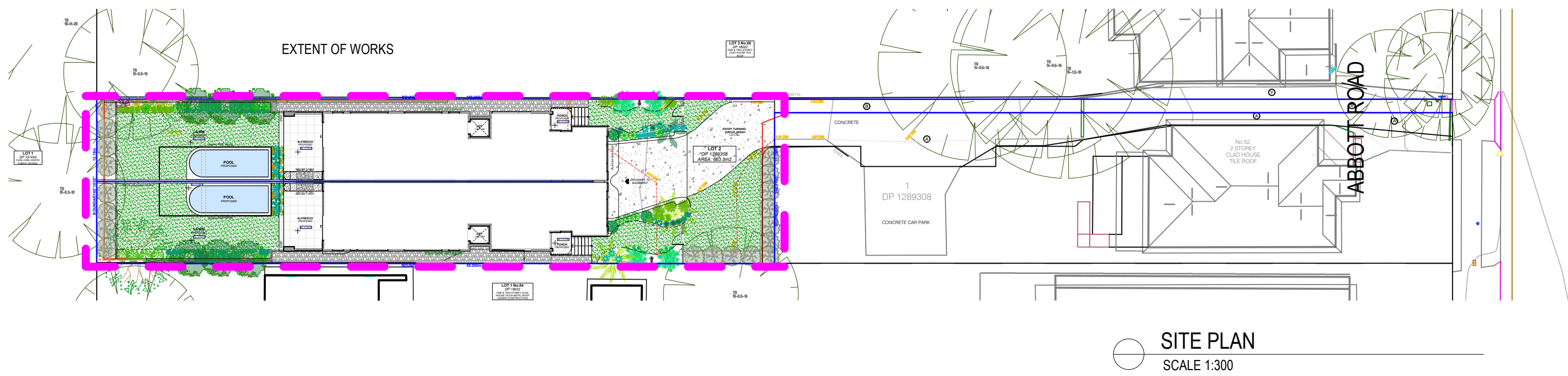


LEGEND

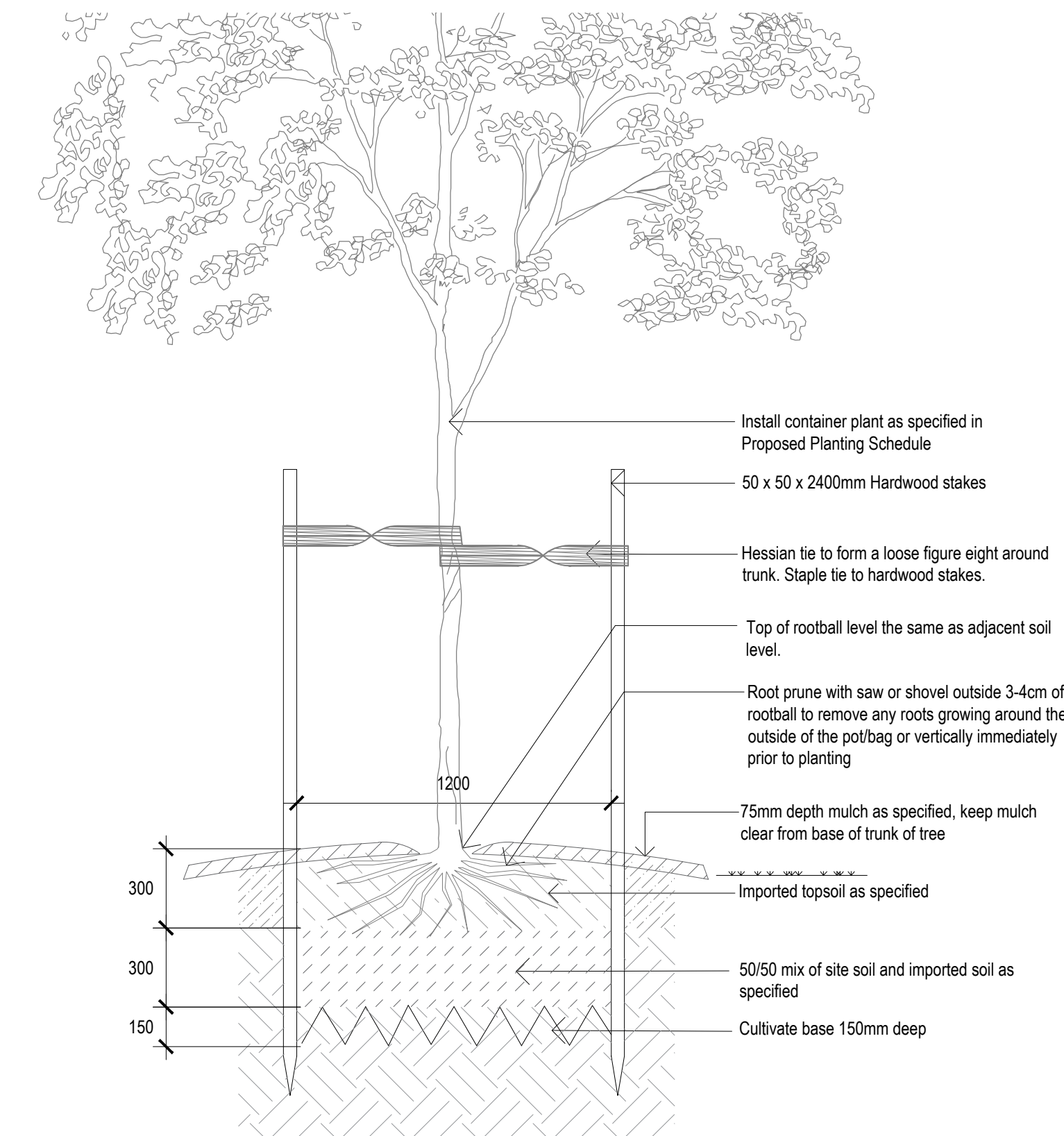
- BOUNDARY
- EXISTING CONTOURS
- PROPOSED LEVELS
- ALUMINIUM EDGE
- CONCRETE
- PEBBLES
- TURF
- PAVING
- TREE TO BE RETAINED



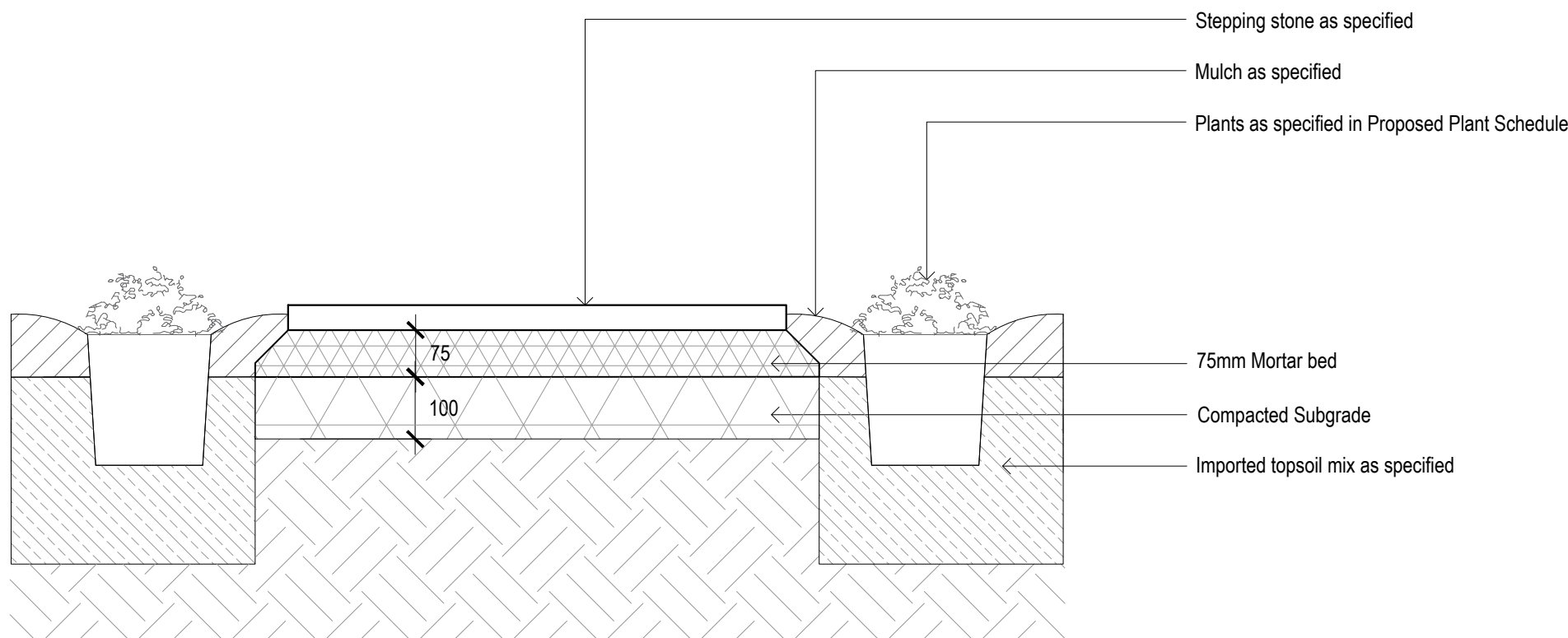
PROPOSED PLANT SCHEDULE					
KEY	BOTANICAL NAME	COMMON NAME	QTY	MATURE HGT	POT SIZE
#	<b>TREES</b>				
	AC	ARCHONTOPHOENIX CUNNINGHAMIANA	BANGALOW PALM	2	8m 300mm
	DL	DYPSSIS LUTESCENS	GOLDEN CANE PALM	4	6m 250mm
	MG	MAGNOLIA GRANDIFLORA 'TEDDY BEAR'	TEDDY BEAR MAGNOLIA	6	3m 300mm
	FA	PLUMERIA ACUTIFOLIA	FRANGIPANI	1	5m 300mm
#	<b>SHRUBS</b>				
	AZ	ALPINIA ZERUMBET 'VARIEGATA'	VARIEGATED SHELL GINGER	3	2m 200mm
	CF	CORDYLINE FRUTICOSA 'PINK DIAMOND'	PINK DIAMOND	1	2.5m 200mm
	CO	CRASSULA OVATA 'UNDULATA'	RUFFLED JADE	6	0.5m 200mm
	EA	EUPHORBIA ACURENSIS 'COWBOY'	COWBOY CACTUS	2	1m 250mm
	HH	HELICONIA 'HOT RIO NIGHTS'	HOT RIO NIGHTS	1	3m 250mm
	PM	PITTOSPORIUM TOBIRA 'MISS MUFFET'	MISS MUFFET PITTOSPORIUM	15	0.6m 200mm
	RH	RHAPHIOLEPS INDICA 'ORIENTAL PEARL'	ORIENTAL PEARL	4	1m 200mm
	RI	RHAPHIOLEPS INDICA 'LITTLE BLISS'	LITTLE BLISS RHAPHIOLEPS	10	0.6m 200mm
	<b>GRASSES / GROUND COVERS</b>				
	AM	ARTHROPODIUM CIRRIATUM 'MATAPOURI BAY'	RENGA RENGGA LILY	6	0.9m 200mm
	DS	DICHOCHORDA ARGENTEA	SILVER FALLS	8	0.1m 140mm
	LC	LOMANDRA CONFERTIFOLIA 'LIME TUFF'	LIME TUFF	5	0.6m 140mm
	LM	LIRIOPE MUSCARI 'PINK PEARL'	PINK PEARL	12	0.3m 140mm
	LP	LIBERTIA PANICULATA 'SHADOW STAR'	SHADOW STAR LIBERTIA	5	0.4m 140mm
#	LR	LIGULARIA RENIFORMIS	TRACTOR SEAT	11	0.8m 200mm
	NG	NEOMARICA GRACILIS	WALKING IRIS	12	0.5m 140mm
	PX	PHILODENDRON SELLOUM 'XANADU'	PHILODENDRON	15	1m 200mm
	RO	ROSMARINUS OFFICINALIS PROSTRATUS	PROSTRATE ROSEMARY	8	0.2m 140mm
	VH	VIOLA HEDERACEA	NATIVE VIOLET	12	0.1m 100mm
	WF	WESTRINGIA FRUTICOSA 'GREY BOX'	GREY BOX WESTRINGIA	7	0.4m 200mm

# Native and/or low water use plant species

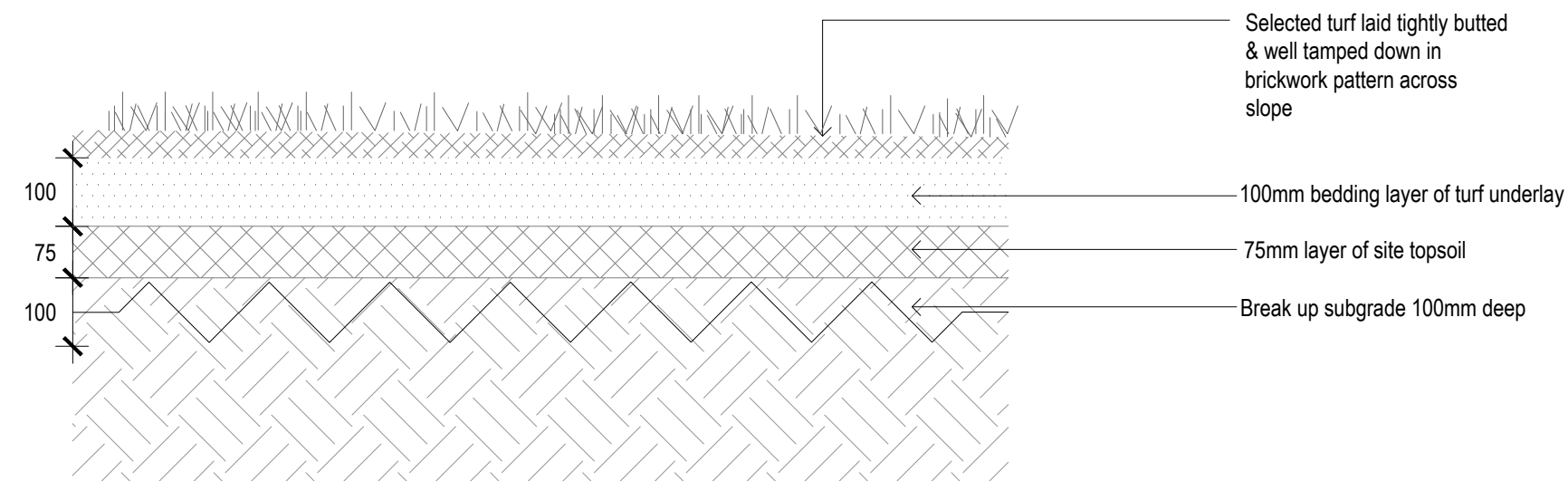




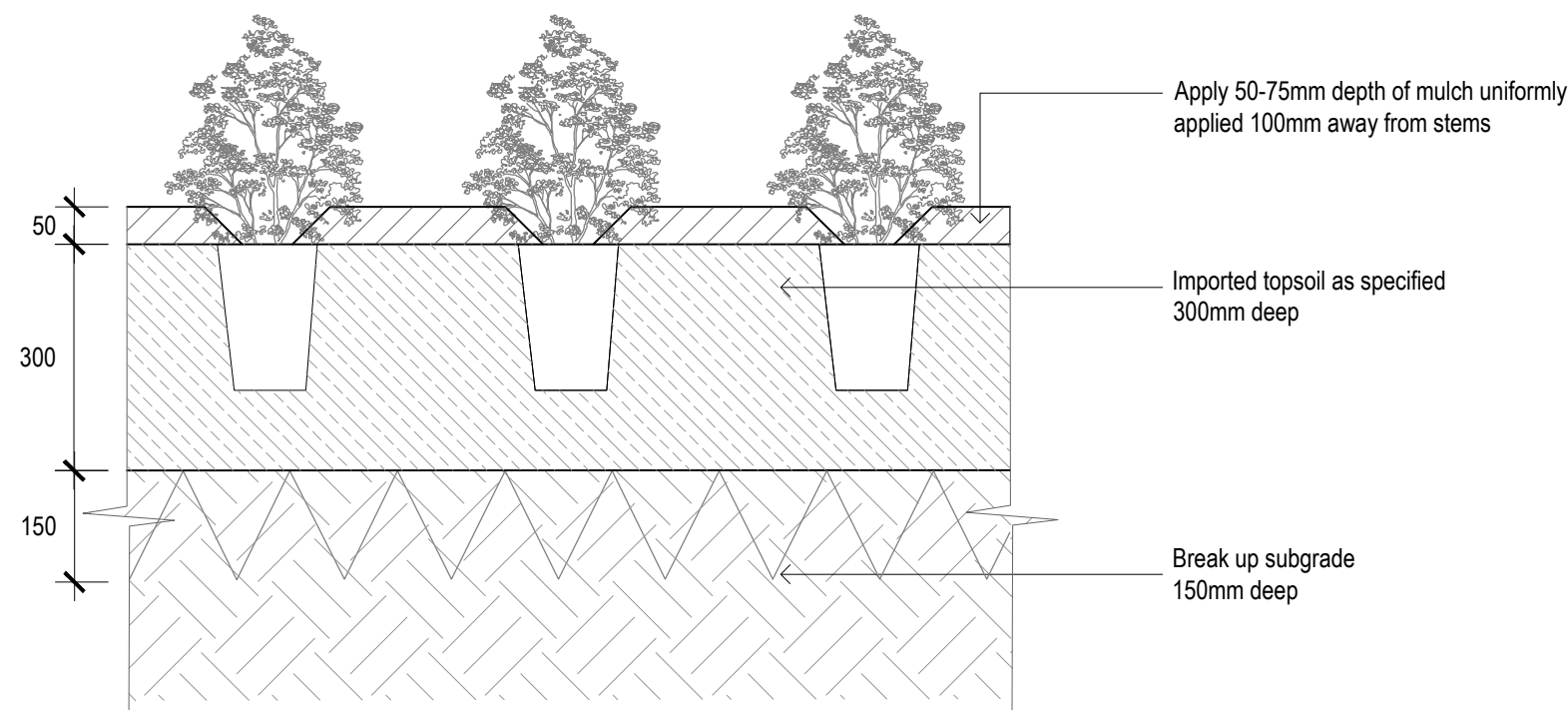
01 TYPICAL TREE PLANTING  
SCALE 1:20



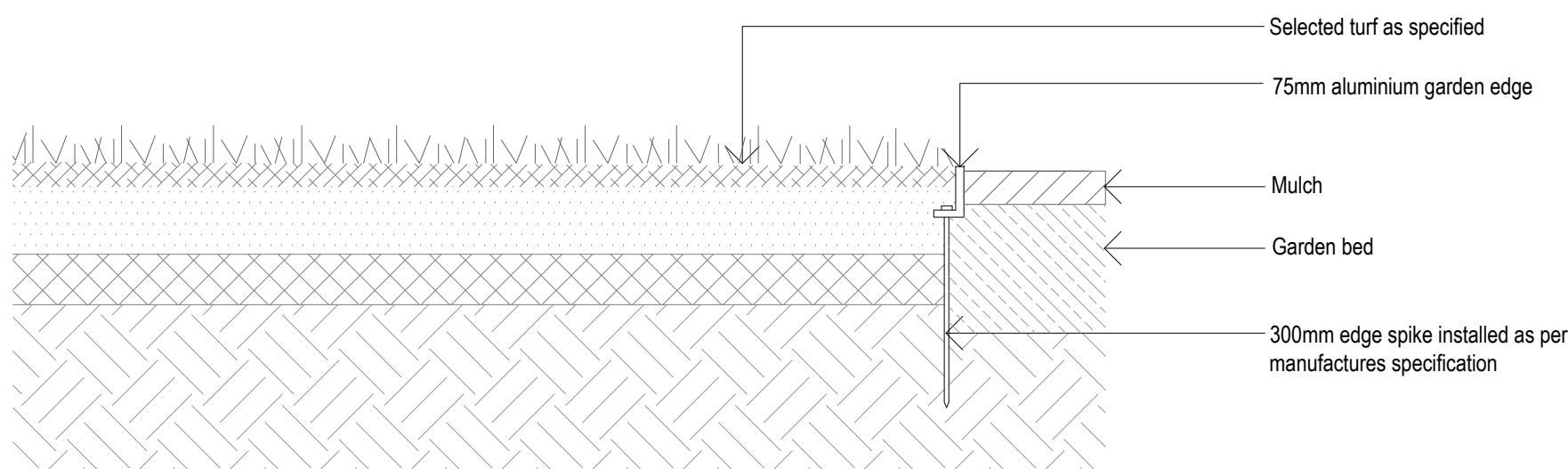
04 TYPICAL STEPPING STONE DETAIL  
SCALE 1:10



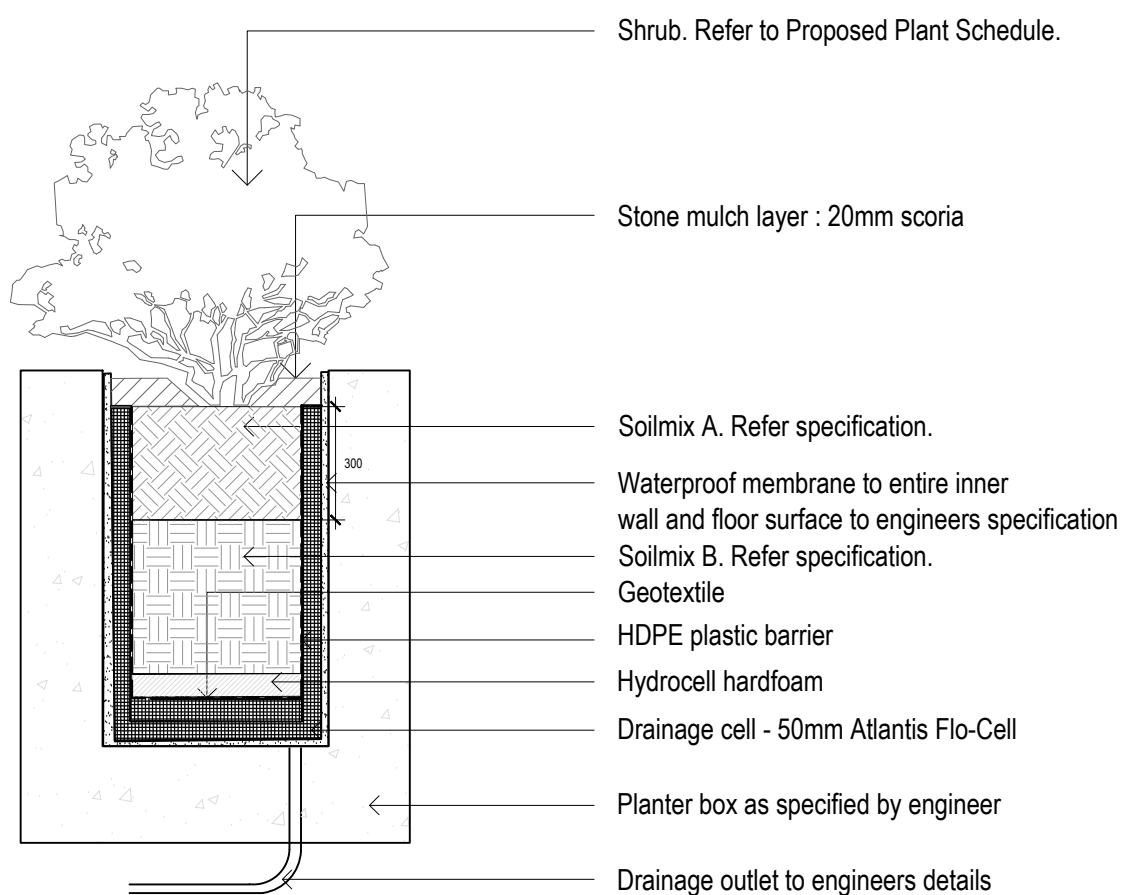
05 TYPICAL TURF DETAIL  
SCALE 1:10



02 TYPICAL GARDEN BED DETAIL  
SCALE 1:10



03 TYPICAL ALUMINIUM EDGE DETAIL  
SCALE 1:10



06 TYPICAL PLANTER BOX DETAIL  
SCALE 1:10

## LANDSCAPE SPECIFICATION NOTES

### SITE PREPARATION

Locate any underground and overground services & ensure no damage occurs. Levels on plan are nominal only & all dimensions to be checked on site prior to commencement. Final structural integrity of all items shall be the sole responsibility of landscape contractor.

### WORKMANSHIP AND MATERIAL QUALITY

Materials and workmanship are to conform to the current applicable Australian Standard Specifications and Codes. Any work or materials, which, in the opinion of the Site Manager do not meet appropriate industry standards should be rejected. Where works are adjacent to existing works, make proper junctions between new and existing works and make good any damage caused to adjoining existing and retained works.

### PROTECTION OF EXISTING TREES:

Prior to construction, the builder shall erect tree protection fencing to the drip line of existing trees to be retained. The fence shall be constructed of star pickets at 2.4m spacings and connected by three strands of 2mm wire at 300mm spacings to a minimum height of 1500mm. Protect all trees affected by demolition & construction. Take necessary precautions to protect the Structural Root Zone (SRZ) as per AS 4373-2009 Australian Standard for Protection of Trees on Development Sites. Tree protection measures shall remain intact until the completion of all construction works.

Prohibited Works or material storage within the TPZ as per AS 4970-2009 except with approval of council:

- entry of machinery or storage of building materials, parking of any kind of vehicle
- erection or placement of site facilities, removal or stockpiling of soil or site debris disposal of liquid waste including paint & concrete wash
- excavation or trenching of any kind (including irrigation or electrical connections).
- attaching any signs or any other objects to the tree, placement of waste disposal or skip bins
- pruning and removal of branches, other than those by a qualified Arborist

Compacted Ground/Coring: Avoid compaction of the ground under trees. If compaction nevertheless occurs loosen the soil by Coring. Coring to be carried out by a qualified Arborist.

### REMOVAL OF EXISTING TREES

All trees to be removed shall be carried out by a qualified arborist and work shall conform to the provisions of AS4373-2007 Australian Standards for The Pruning of Amenity Trees.

### ELIMINATE WEEDS

Remove all existing weeds by hand, wiping or spraying with a glyphosate based herbicide. Weed control shall never be performed by mechanical cultivation or by scraping. Herbicide spraying is to be used to eliminate all existing weeds 30 days prior to planting.

### IMPORTED TOPSOIL

All construction must comply with AS 4419-2018 Soils for Landscaping and Garden Use. Spread the topsoil on the prepared subsoil and grade evenly,

- making allowances, if appropriate, for the following:
- Required finished levels and contours after light compaction.
- Compact lightly and uniformly in 150 mm layers. Avoid differential subsidence and excess compaction and produce a finished topsoil surface which has the following characteristics:
- Finished to design levels, smooth and free from stones or lumps of soil. Graded to drain freely, without ponding, to catchment points. Grade evenly into adjoining ground surfaces ready for planting.

### PLANTING AREA

Remove weeds, rubbish, mulch and other debris. Do not disturb tree roots or services and if necessary cultivate these areas by hand. Spread topsoil on the prepared subsoil and grade evenly, making the necessary allowance to permit the required finished levels and contours after a light compaction. Spread topsoil to the typical depth of 300mm. Feather edges into adjoining undisturbed ground.

### PLANT STOCK

Plant stock to be supplied by production nurseries in accordance with AS 2303:2018 Tree Stock for Landscape Use.

Health & Vigour: Supply plants with foliage size, texture & colour consistent with that shown in healthy specimens of the species. Balance of Crown: Supply plants with max. variation in crown bulk on opposite sides of stem axis, +/- 20%. Stock selection should also be based on NATSPEC Guide *Specifying Trees: a Guide to Assessment of Tree Quality*.

### TREE DELIVERY

Carefully load, transport and unload, at the nominated site, the specified trees. All trees are to be delivered in such a way to prevent in transit wind damage. All trees shall be watered prior to loading for delivery. Plants shall not be contained within delivery vehicles for a period longer than 24hrs. Trees shall be carefully unloaded using methods appropriate to the size and weight of the trees. Damage to trees sustained during transport or unloading will result in those plants being rejected. Plants shall conform to the requirements at the time of delivery to the planting site. Transpiration shall be minimised during transport to prevent subsequent wilting or unseasonal defoliation. Plants that have been allowed to wilt or dry out during transport shall be rejected, irrespective of any previous acceptance. The soil mass of the root ball shall be securely contained and supported during transport. Root balls that have been unreasonably fractured, deformed or slumped during transit or unloading should not be accepted.

### TREE PLACEMENT AND ALIGNMENT

When the tree pit is excavated and the hole is the correct size, place the rootball in its final position. Ensure the trees are centred and plumb and the top of the rootball level with the finished surface of the surrounding soil mix. Do not use the trunk of the tree as a lever in positioning or moving the tree in the planting hole. Position the tree at the set out distances as indicated in the details. Ensure trunks are set vertically and aligned with other new or existing trees. Orientate the trees trunk north where indicated by supplied markings where applicable.

### ROOT TRIMMING

All trees shall have the outer 10-25mm of the external root ball faces pruned or sliced away using secateurs or a sharp and clean spade. Avoid excessive disturbance to the remaining root ball during this trimming and discontinue if excessive root ball soil begins to fall away. Do not leave the root balls exposed for extended periods. Cover the root ball with moist hessian if backfilling cannot occur immediately.

### STAKING

Install 3 x 2100mm (H) x 50mm x 50mm hardwood timber stakes with hessian ties to all trees. Provide appropriate support considering exposure to prevailing winds. Stakes and hessian ties to be removed as soon as the tree is self supporting.

### BACKFILLING

Backfill with soil mix as specified in soil mixes and in accordance with the details and specification. Lightly compact the soil to ensure all voids around root balls are filled and that no air pockets are retained. Ensure that the backfill soil is not paced over the top of the potted root ball. The top of the root ball and plant stem must be kept level with the top of the backfill.

### FERTILISING

Fertiliser to be applied at time of planting. Slow release landscape fertiliser suitable for trees and shrubs, 9 to 12 months release time. Osmocote or approved equivalent applied according to manufacturers directions.

### ALUMINIUM GARDEN EDGING

Supply and install Link Edge 75mm as per Landscape Plan. Compact and level the base in the required area as indicated on Landscape Plan. Half hammer spikes into prepunched holes (approx 4 spikes every 3m length) starting from the first hole in the end of the Link Edge. Use spike washers supplied by manufacturer. Half hammer subsequent spikes in pivotal areas along the length. (Especially at points where a curve is required). Connect lengths together by using fish-plate connectors supplied by manufacturer. Check position of Link Edge is correct before hammering spikes firmly into ground.

### MULCHING

All landscaping must comply with AS 4454-2012 Compost, soil conditioners and mulches. All planting areas to receive 50-75mm of garden Mulch, Midnight Fines, ANL p: 02 9450 1444 or approved alternative. Keep mulch 100mm away from plant stem & form a well to stop excessive water runoff. Finish flush with adjacent surfaces. Always apply mulch to damp soil. Never place mulch over dry soil as once applied it will be difficult for soil rehydration to occur. If mulching on top of a pre-existing grass area, the grass or weeds must first be hand weeded or sprayed with a non-selective herbicide and allowed to wilt and die before the mulch is placed over the area. This practice will negate grass growing up through the mulch over time.

### TURFING

New turf- Sapphire Softed Leafed Buffalo. Excavate / grade all areas to be turfed to 120mm below finished levels. Ensure that all surface runoff is directed away from buildings. Ensure that no pooling or ponding will occur. Further rip the subgrade to 150mm. Install 100mm of imported turf underlay. Rolls to be closely butted and laid in a brickwork pattern. Fill any small gaps with topsoil and water thoroughly.

### WATERING

Water in immediately after plant installation & allow for soil settlement. Watering program: Minimum 3 complete waterings, soaking to a depth of 150 mm at fortnightly intervals for the first 6 weeks of plant establishment irrespective of natural rainfall. Manually water all lawn and planting areas in absence of an irrigation system or until the proposed irrigation system is fully operational. Avoid frequent dampening of the surface. Allow the surface of the soil to partially dry out between waterings.

### STEPPING STONES

Install each stepping stone on a 75mm thick mortar bed and space according to plan. Stones to finish 10mm above adjacent surface. Fill gaps as specified.

### RETAINING WALLS & PLANTER BOXES

All retaining walls & planter boxes more than 600mm high to be constructed to Engineer's details. Ensure all internal surfaces are waterproofed. Geotextile wrapped ag. drainage line backfilled with aggregate is to be installed behind all retaining walls & connected to stormwater in accordance with Sydney Water regulations. All planter boxes are to have Atlantis drainage cell (or approved alternative) installed & connected to stormwater in accordance with Sydney Water regulations.

NOTES:  
- Contractors to check and verify all dimensions and all levels on site prior to any works.  
- Any discrepancies should be immediately referred to Space Landscape Designs.  
- All work to comply with B.C.A. Statutory Authorities and relevant Australian Standards.  
- Dimensions designated over casting. All measurements are in millimetres.

Rev.	Date	Issue
A	15/05/25	DA Issue

Checked
CW

SPACE  
LANDSCAPE DESIGNS

Space Landscape Designs Pty Ltd  
ABN 60 799 663 674 ACN 139 316 251  
info@spacelandscape.com.au  
spacelandscape.com.au  
P: 02 9905 7870 F: 02 9905 7657  
Suite 138, 117 Old Pittwater Rd,  
Brookvale NSW 2100

PROJECT:  
New Dual Occupancy  
SITE ADDRESS:  
52A Abbott Road,  
North Curl Curl NSW 2099

CLIENT: L. & I. Paling  
DRN: A.Elboz (NILA RLA No: 22214)  
SCALE: 1:100@A1  
PROJECT NO: 252265

DRAWING TITLE:  
LANDSCAPE PLAN  
DRAWING NO:  
L-02  
Rev: A