

15 May 2022

General Manager
Manly Council
PO Box 82
MANLY NSW 1655

Dear Sir/Madam,

Re: Stormwater Drainage Details – 29 Dobroyd Road, Balgowlah Heights

With reference to the development application for the above property, please find enclosed a copy of the site Stormwater Management Plan & Details, STORM-1/B, STORM-2/B & STORM-3/B, for your perusal.

The plan shows the collected flows from the proposed roofed area discharging to an existing council pit in Commerce Lane.

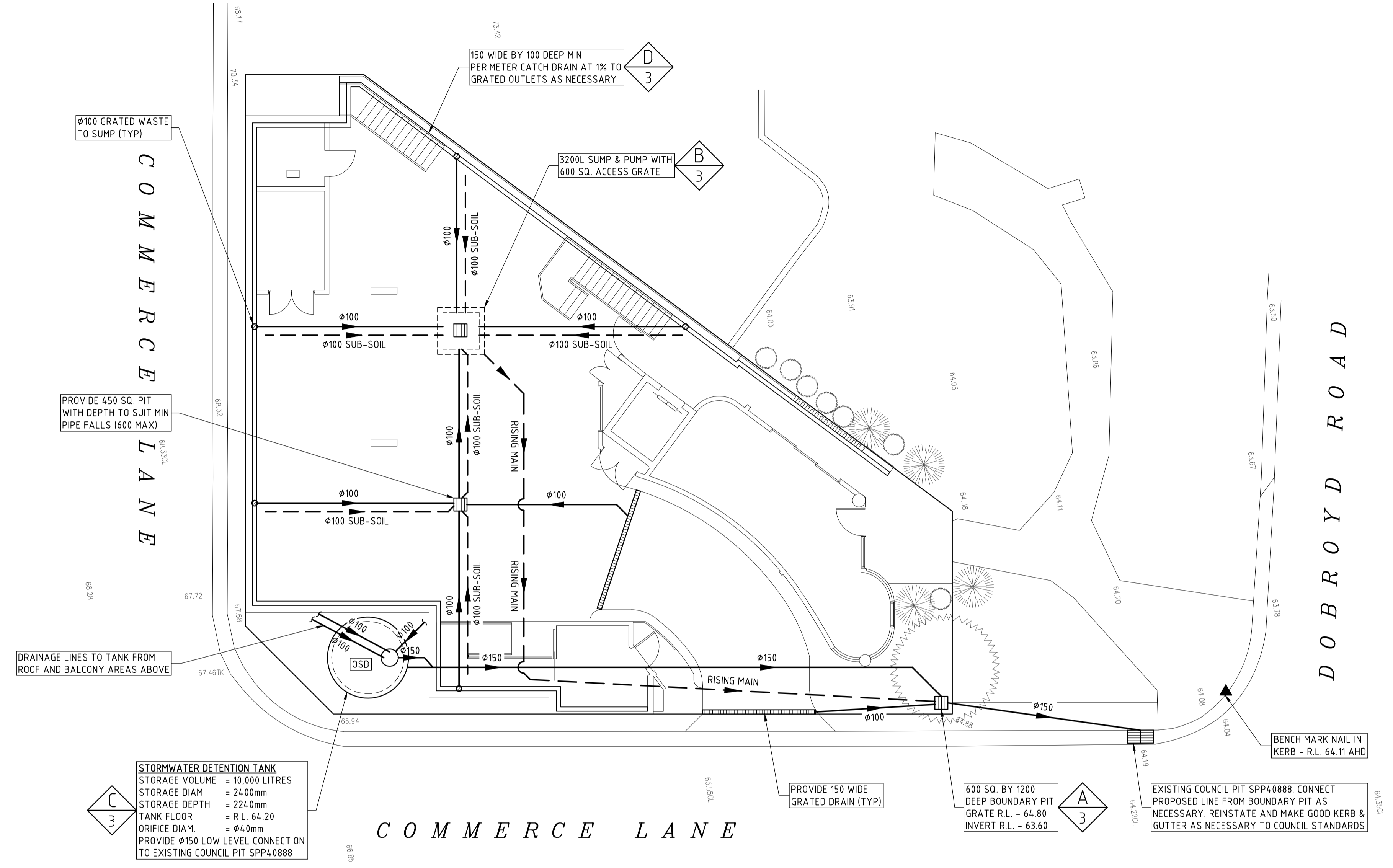
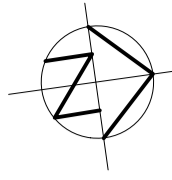
Note that it is proposed to provide a 8600 litre on-site detention tank on the southeast corner of the property.

Should you require any further information please contact the undersigned.

Yours faithfully
TAYLOR CONSULTING

D M SCHAEFER - Director
B.E. Civil (Hons) M.I.E. Aust N.E.R.





STORMWATER DETENTION TANK
 STORAGE VOLUME = 10,000 LITRES
 STORAGE DIAM = 2240mm
 STORAGE DEPTH = 2240mm
 TANK FLOOR = R.L. 64.20
 ORIFICE DIAM. = 40mm
 PROVIDE 150 LOW LEVEL CONNECTION TO EXISTING COUNCIL PIT SPP40888

COMMERCE LANE

DOBROYD ROAD

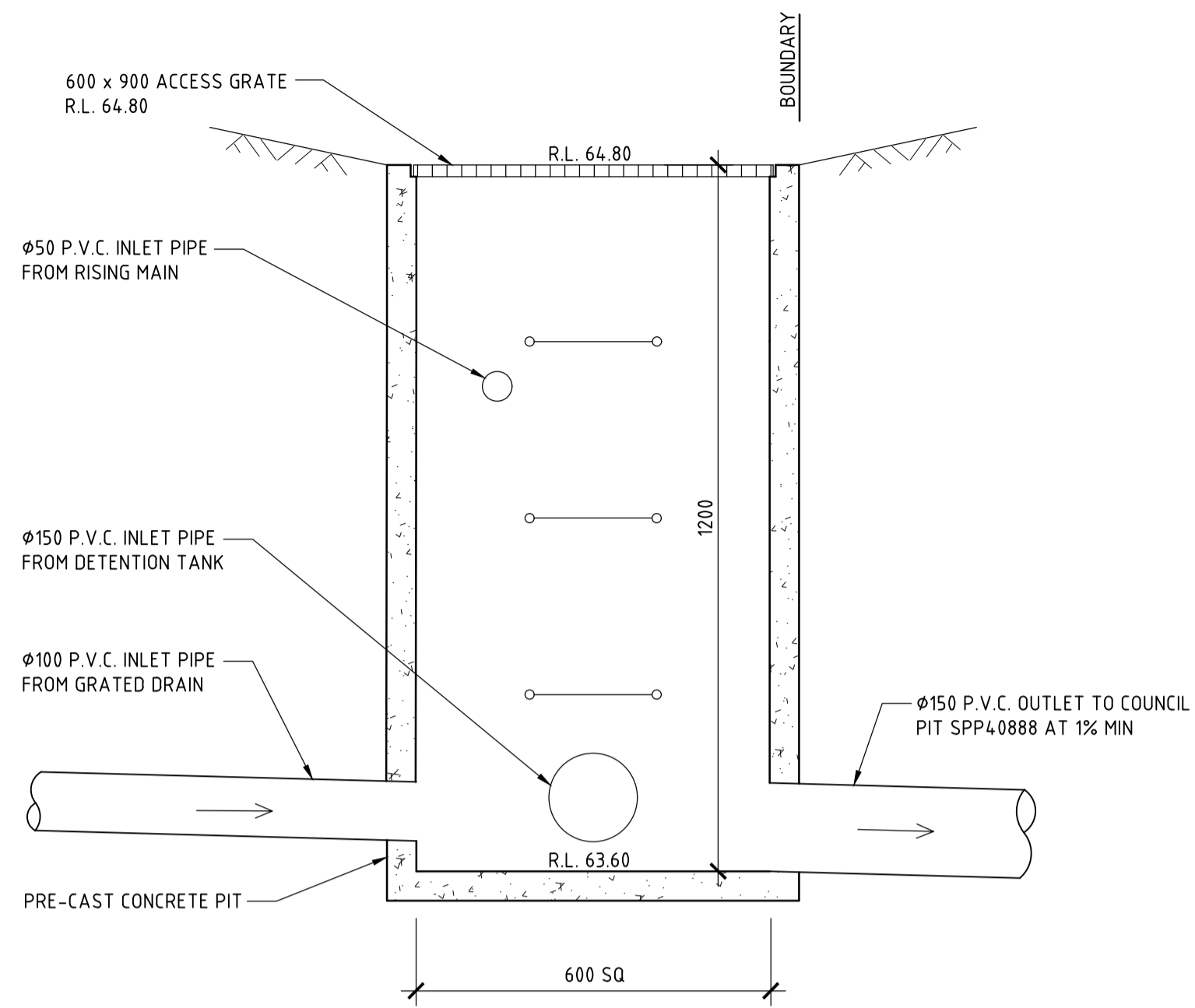
GROUND FLOOR DRAINAGE PLAN
 SCALE 1:100
 SHOWING CARPARK LEVEL DRAINAGE ELEMENTS AND CONNECTION TO DETENTION TANK

ISSUE DATE	REVISION
8 FEB 2022	CHANGES TO SUIT NEW ARCHITECTURAL PLANS
12 MAY 2023	CHANGES TO SUIT NEW ARCHITECTURAL PLANS

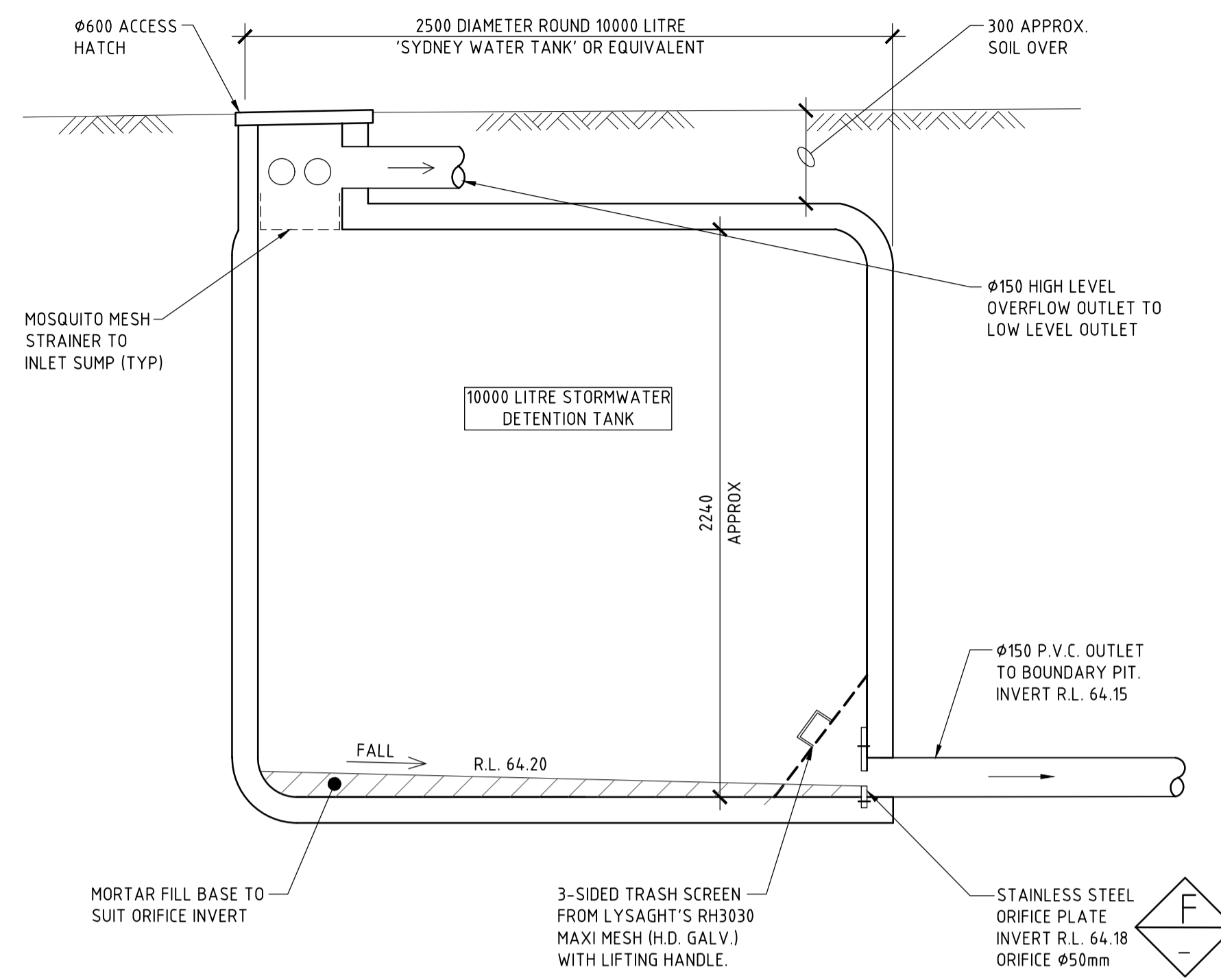
TITLE STORMWATER MANAGEMENT PLAN 29 DOBROYD RD, BALGOWLAH HEIGHTS			
DRAWN JBP	DATE 11 MAY 2023	CHECKED 	SCALE @ A1 1:100



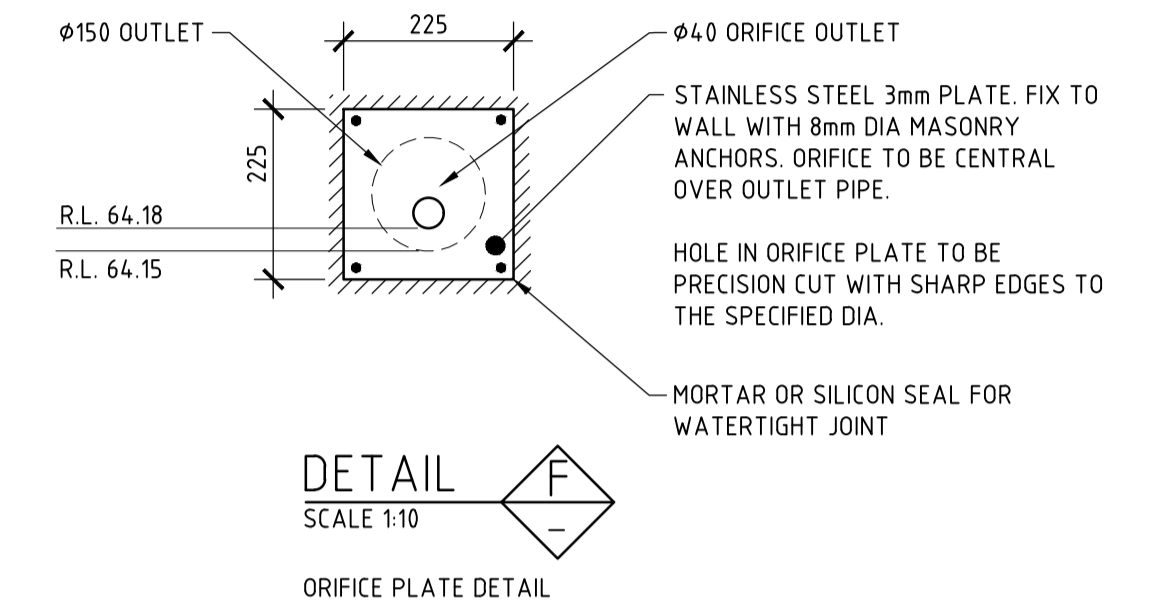
STORM-2/B



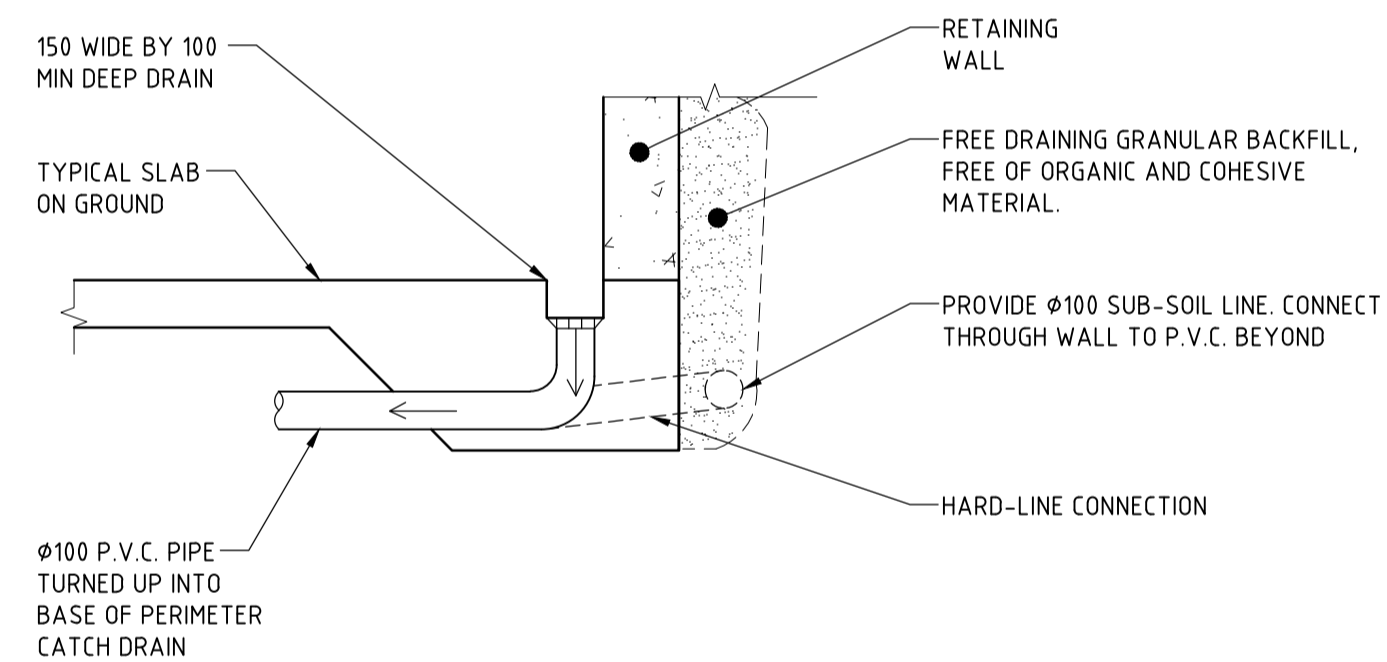
DETAIL A
SCALE 1:10
TYPICAL BOUNDARY PIT DETAIL



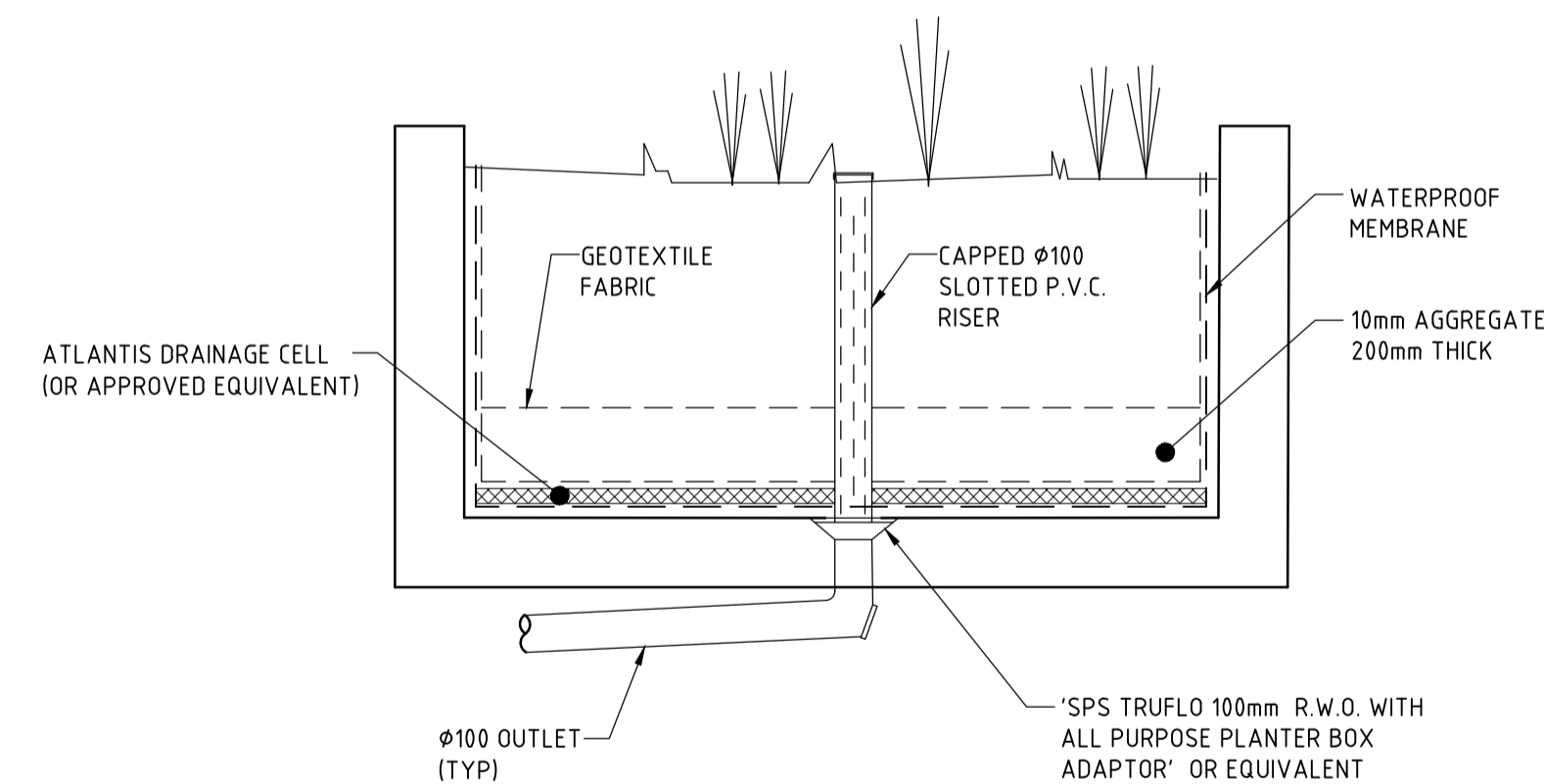
DETAIL C
SCALE 1:20
STORMWATER COLLECTION AND PUMP PIT DETAIL.
STRUCTURAL DESIGN TO SEPARATE DETAIL.



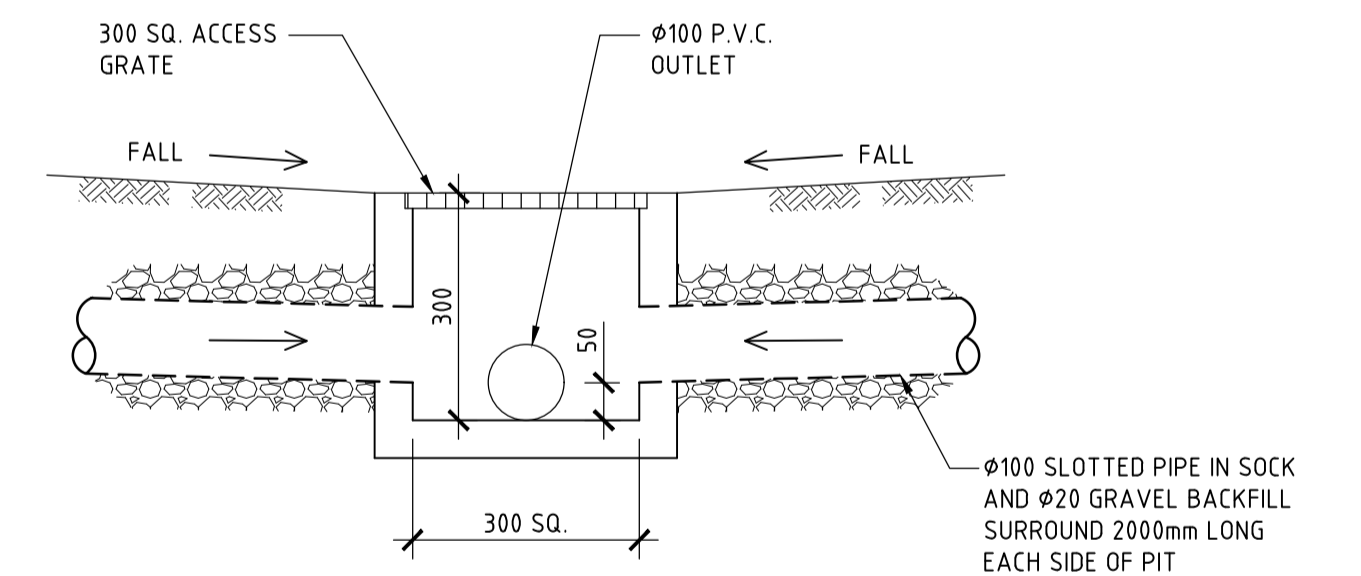
DETAIL F
SCALE 1:10
ORIFICE PLATE DETAIL



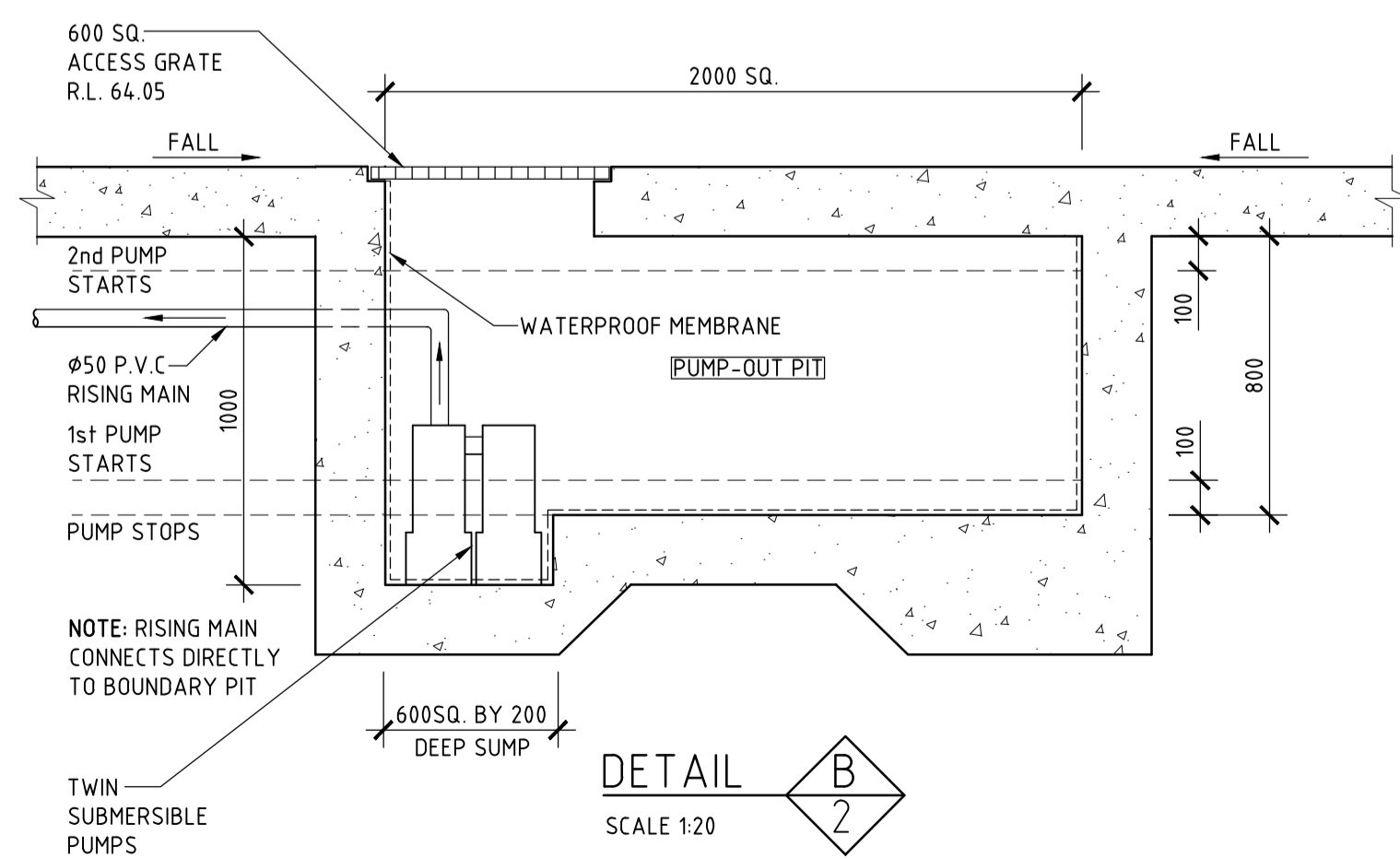
DETAIL D
SCALE 1:20
SHOWING PERIMETER CATCH DRAIN FOR SLAB ON GROUND



DETAIL E
SCALE 1:20
SHOWING TYPICAL PLANTER BOX DETAIL



DETAIL G
SCALE 1:10
TYPICAL SURFACE INLET PIT DETAIL



DETAIL B
SCALE 1:20
SHOWING PUMP AND SUMP CONFIGURATION

- PUMP NOTES**
1. TWIN SUBMERSIBLE PUMPS TO BE PROVIDED IN PUMP PIT.
 2. PUMPS TO OPERATE ALTERNATELY AT LOW INLET FLOWRATE & CONCURRENTLY AT HIGH INLET FLOWRATE.
 3. PUMP CAPACITY TO BE 2.0 l/s EACH FOR STATIC OF HEAD = 2.0m (EXCLUDES OUTLET PIPE LOSSES).
 4. PROVIDE EXTERNAL CONTROL PANEL WITH AUDIO & VISUAL ALARMS & BATTERY POWER BACK-UP.
 5. INLET PIPE TO BE LOCATED CLEAR OF THE HIGH LEVEL FLOAT SWITCH TO PREVENT FALSE ALARMS.

ISSUE DATE	REVISION
8 FEB 2022	CHANGES TO SUIT NEW ARCHITECTURAL PLANS
11 MAY 2023	CHANGES TO SUIT NEW ARCHITECTURAL PLANS

TITLE			
STORMWATER MANAGEMENT DETAILS 29 DOBROYD ROAD, BALGOWLAH HEIGHTS			
DRAWN	DATE	CHECKED	SCALE @ A1
MDB	11 MAY 2023	<i>[Signature]</i>	1:20 1:10
BE Civil (Hons) MIE Aust.			

TAYLOR CONSULTING
CIVIL & STRUCTURAL ENGINEERS

STORM-3/B