

Landscape Referral Response

Application Number:	DA2025/0151
Date:	20/03/2025
Proposed Development:	Use of a tenancy in approved mixed use and seniors housing development as a centre-based child care facility including internal fit-out and landscaping
Responsible Officer:	Thomas Burns
Land to be developed (Address):	Lot 11 DP 1258355 , 5 Skyline Place FRENCHS FOREST NSW 2086

Reasons for referral

This application seeks consent for the following:

- Construction / development works within 5 metres of a tree or
- New residential works with three or more dwellings. (RFB's, townhouses, seniors living, guesthouses, etc). or
- Mixed use developments containing three or more residential dwellings.
- New Dwellings or

Officer comments

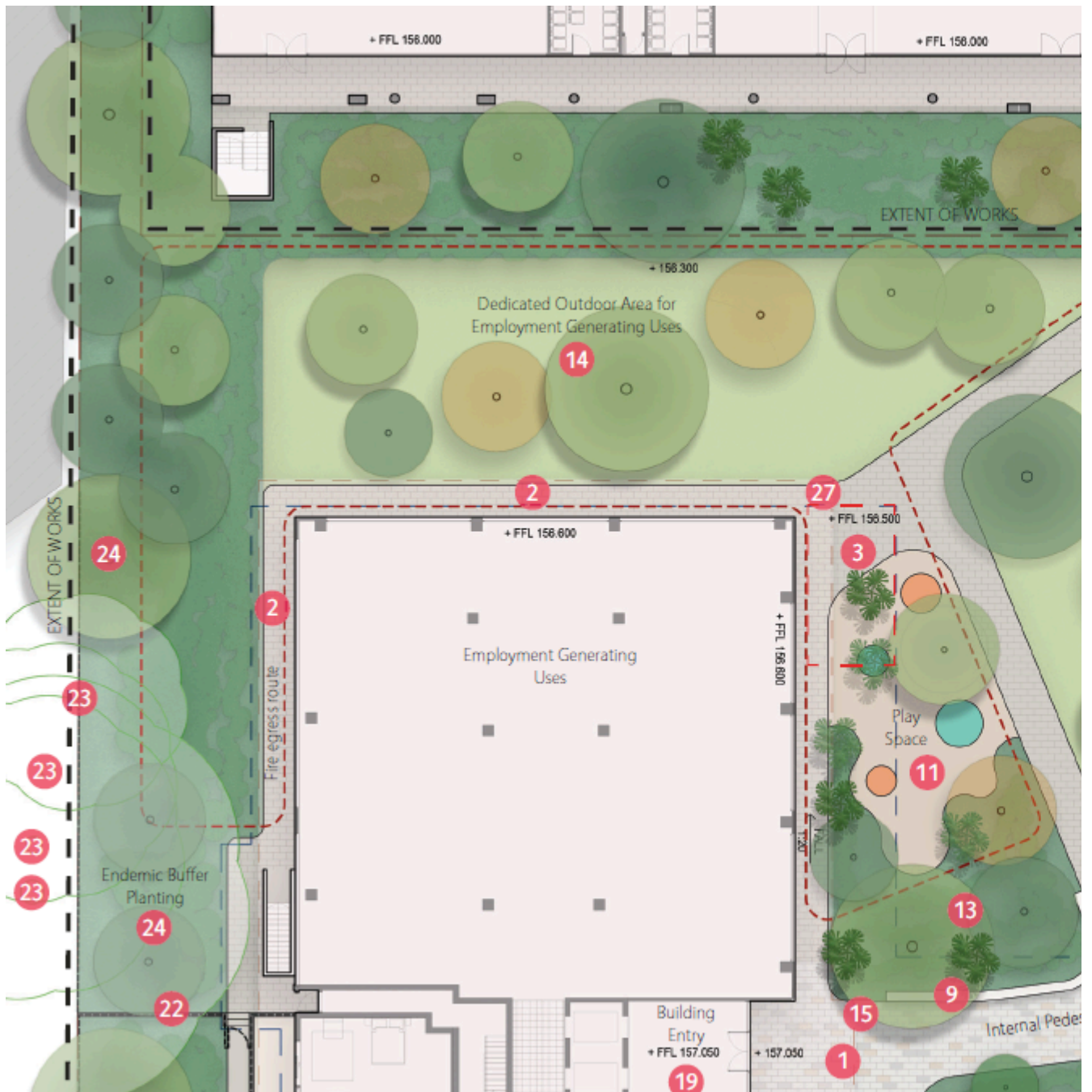
The application seeks consent for: Use of a tenancy in approved mixed use and seniors housing development as a centre-based child care facility including internal fit-out and landscaping.

At this stage there appears to be insufficient information to assess the application. No landscape plans were sighted.

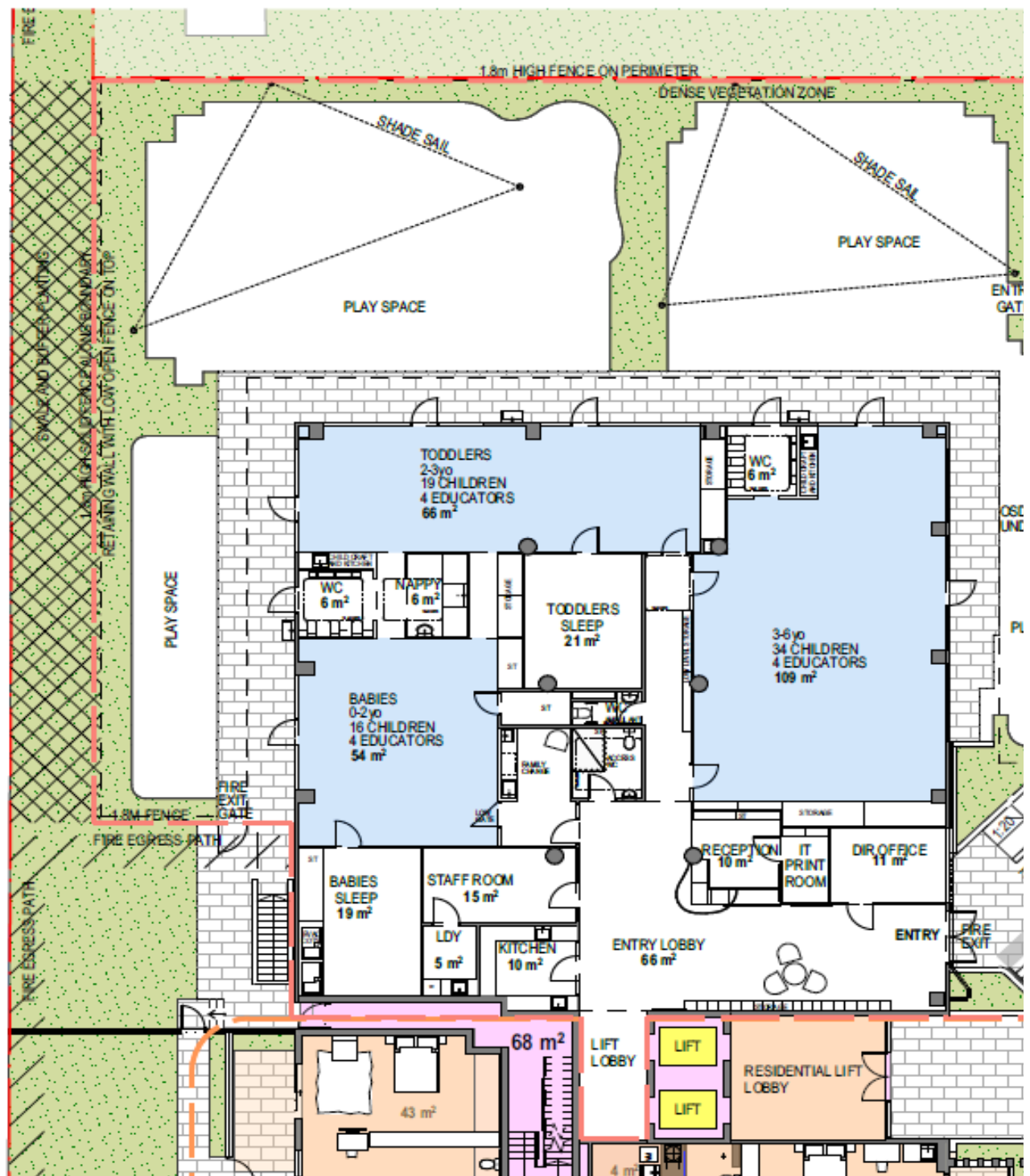
The proposal seems to indicate that soft landscape open space areas are being included in the play areas for the childcare centre.

Based on the minimal information provided, this would remove a number of replacement trees and lead to an apparent reduction in the provision of buildings in a landscape setting that is part of the current approval.

Landscape Plans are required to enable assessment of these changes.



Extract from Mod2024/0472 plans.



GROUND FLOOR PLAN

DA2025/0151 Ground Floor Plan

The proposal is therefore unsupported.

Note: Should you have any concerns with the referral comments above, please discuss these with the Responsible Officer.

Recommended Landscape Conditions:

Nil.