



## Inspection summary

Project Name: 27-29 NORTH AVALON RD, AVALON (STORMWATER I	Project number:	Date: 14/03/2019	Contact:	
---	-----------------	---------------------	----------	--

Please find per enclosure the inspection report

<b>Total Length of Stormwater Network</b>	.....	<b>155.97 m</b>
<b>Inspected Length of Stormwater Network</b>	.....	<b>155.97 m</b>
<b>Not inspected Length of Stormwater Network</b>	.....	<b>0.00 m</b>
Total Length of house connections (satellite)	.....	<b>0.00 m</b>
Inspected Length of house connections (satellite)	.....	<b>0.00 m</b>
Not inspected Length of house connections (satellite)	.....	<b>0.00 m</b>
Number of Sections	.....	<b>2</b>
Number of house connections	.....	<b>0</b>
Number of Photos	.....	<b>55</b>



## Inspection Summary

Date: 14/03/2019	Responsible:		
---------------------	--------------	--	--

Sewer Reference: SPI56440	Section length: 61.41 m
Section Numer: 1	Pipe length:
Start node: SPP50848	Material: Reinforced concrete
End node: SPP50847	Shape: Circular


			<p>Start node, grated inlet pit, Nodename: SPP50847</p>	
0.00	STGP			
1.10	CI	Intruding connection, magnitude of intrusion: <5%, General Comments AGGI LINE, at 11 o'clock		; 5
2.33	DES	Deposit is fine sediments- Sand or Silt in the invert, at joint , Obstruction: 5-20% , from 5 to 7 o'clock		; 30
4.78	CXD	Defective Connection - The connecting pipe is damaged, magnitude of obstruction <5%, General Comments NOT FULLY ENTERING PIPE, at 10 o'clock		; 30
4.99	RM	A Mass of mostly fine Roots, which has developed into an interwoven clump, at joint, Obstruction: 5-20% , from 4 to 8 o'clock		; 30
10.64	CNPO	Connection, poor workmanship, connection appears to be open , diameter 100mm		
10.64	SH	Hole in wall , at 9 o'clock		100;
15.88	SH	Hole in wall , at 3 o'clock		100;
16.42	CNPO	Connection, poor workmanship, connection appears to be open , diameter 100mm		
19.13	CNGO	Connection, good workmanship, connection appears to be open, diameter 150mm , at 12 o'clock		
26.62	SH	Hole in wall , at 2 o'clock		100;
33.61	SH	Hole in wall , at 3 o'clock		100;
37.62	CI	Intruding connection, magnitude of intrusion: <5%, General Comments AGGI LINE, at 1 o'clock		; 5
37.95	CI	Intruding connection, magnitude of intrusion: <5%, General Comments AGGI LINE, at 11 o'clock		; 5
39.32	SH	Hole in wall , at 3 o'clock		100;
39.64	CI	Intruding connection, magnitude of intrusion: <5%, General Comments AGGI LINE, at 12 o'clock		; 5
39.64	SRC	Reinforcement is exposed and corroded, at joint , from 10 to 2 o'clock		80;
40.48	SH	Hole in wall , at 1 o'clock		100;
40.85	SH	Hole in wall , at 12 o'clock		100;
43.32	SH	Hole in wall , at 12 o'clock		100;



## Inspection Summary

Date:  
14/03/2019

Responsible:

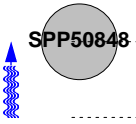
..... 45.89	SH	Hole in wall , at 12 o'clock	100;
..... 48.25	SH	Hole in wall , at 12 o'clock	100;
..... 50.77	SH	Hole in wall , at 12 o'clock	100;
..... 53.15	SH	Hole in wall , at 12 o'clock	100;
..... 55.61	SH	Hole in wall , at 12 o'clock	100;
..... 58.09	SH	Hole in wall , at 12 o'clock	100;
..... 59.48	SH	Hole in wall , at 12 o'clock	100;
..... 60.11	OBB	Obstruction, dislodged brick or masonry unit lying in the invert , reduction in cross sectional area: 5-20% , at 6 o'clock	
 ..... 61.41	FHZ	Finish node, Nodename: SPP50848, BURIED ACCESS PIT	



## Inspection Summary

Date: 14/03/2019	Responsible:		
---------------------	--------------	--	--

Sewer Reference: SPI56439	Section length: 94.56 m
Section Numer: 2	Pipe length:
Start node: SPP50849	Material: Reinforced concrete
End node: SPP50848	Shape: Circular

	<b>SPP50848</b> 0.00	STZ	Start node, Nodename: SPP50848, BURIED ACCESS PIT	
	1.17	CNGO	Connection, good workmanship, connection appears to be open, diameter 150mm , at 12 o'clock	
	3.95	SH	Hole in wall , at 12 o'clock	100;
	6.40	SH	Hole in wall , at 12 o'clock	100;
	8.89	SH	Hole in wall , at 12 o'clock	100;
	12.16	SH	Hole in wall , from 11 to 1 o'clock	100;
	12.16	SRC	Reinforcement is exposed and corroded , from 11 to 1 o'clock	80;
	16.13	SH	Hole in wall , at 12 o'clock	100;
	20.26	CNGO	Connection, good workmanship, connection appears to be open, diameter 100mm , at 10 o'clock	
	21.30	SH	Hole in wall , at 12 o'clock	100;
	23.72	SH	Hole in wall , at 9 o'clock	100;
	33.21	CNPO	Connection, poor workmanship, connection appears to be open , diameter 100mm	
	33.21	SH	Hole in wall , from 9 to 11 o'clock	100;
	39.87	SH	Hole in wall , from 10 to 11 o'clock	100;
	47.39	SH	Hole in wall , at 12 o'clock	100;
	51.45	CNGO	Connection, good workmanship, connection appears to be open, diameter 100mm , at 1 o'clock	
	55.50	RM	A Mass of mostly fine Roots, which has developed into an interwoven clump , Obstruction: 21-50% , from 4 to 8 o'clock	; 40
	64.68	SH	Hole in wall , at 12 o'clock	100;
	69.36	SH	Hole in wall , at 2 o'clock	100;
	69.36	OBI	Obstruction, an object is intruding through the wall , reduction in cross sectional area: <5%, General Comments CONDUIT, from 10 to 2 o'clock	; 5



## Inspection Summary

Date:  
14/03/2019

Responsible:

SPP50849

70.67	SH	Hole in wall , at 3 o'clock	100;
71.27	SH	Hole in wall , at 9 o'clock	100;
72.08	SH	Hole in wall , at 9 o'clock	100;
72.08	SRC	Reinforcement is exposed and corroded , at 9 o'clock	80;
72.92	CNPO	Connection, poor workmanship, connection appears to be open , diameter 100mm	
78.04	DES	Deposit is fine sediments- Sand or Silt in the invert , Obstruction: 5-20% , from 5 to 7 o'clock	; 30
79.51	CNGO	Connection, good workmanship, connection appears to be open, diameter 100mm , at 3 o'clock	
79.51	DER	Deposit is coarse sediments- Gravel or Rubble in the invert , Obstruction: <5% , at 5 o'clock	; 5
80.15	CNGO	Connection, good workmanship, connection appears to be open, diameter 100mm , at 3 o'clock	
80.57	SH	Hole in wall , at 12 o'clock	100;
94.56	FHDE	Finish node, dead end, Nodename: SPP50849	

## WSA assessment

Date: <b>24/04/2019</b>	Case No.: <b>N/A</b>	Asset Owner: <b>AUSFLOW PTY LTD</b>	Operator : <b>ADAM</b>	Section number: <b>1</b>	Pipe Asset Id: <b>SPI56440</b>
Time of inspection: <b>12:16:31</b>	Cleaning:	Standard: <b>WSA 05-2008 2.2</b>	LRP	Conduit Unit Length	Method of Inspection

Town: Suburb: <b>AVALON</b> Street: <b>TASMAN RD</b> Asset Location <b>Light road</b>	Catchment: Asset Owner: <b>AUSFLOW PTY LTD</b> Precipitation.: Flow control	US MH: <b>SPP50848</b> Survey Dir: <b>Upstream</b> DS MH: <b>SPP50847</b> Inspect Length : <b>61.41 m</b>
--	--	--

Purpose of inspection : <b>Locating a conduit, connection or a maintenance</b>	Shape : <b>Circular</b>
Use of Conduit: <b>Structure</b>	Dia/Height: <b>600 mm</b>
Type of Conduit: <b>Storm water drain</b>	Lining: <b>Reinforced concrete</b>
Lining Method:	Pipe Material: <b>Reinforced concrete</b>

Remarks :

1:324 Position	Observation	Str Rate
<p>0.00 1.10 2.33 4.78 4.99 10.64 10.64 15.88 16.42 19.13 26.62 33.61 37.62 37.95 39.32</p> <p><b>SPP50847</b></p>	<p>Start node, grated inlet pit, Nodename: SPP50847</p> <p>Intruding connection, magnitude of intrusion: &lt;5%, General Comments AGGI LINE, at 11 o'clock</p> <p>Deposit is fine sediments- Sand or Silt in the invert, at joint , Obstruction: 5-20% , from 5 to 7 o'clock</p> <p>Defective Connection - The connecting pipe is damaged, magnitude of obstruction &lt;5%, General Comments NOT FULLY ENTERING PIP</p> <p>A Mass of mostly fine Roots, which has developed into an interwoven clump, at joint, Obstruction: 5-20% , from 4 to 8 o'clock</p> <p>Connection, poor workmanship, connection appears to be open , diameter 100mm</p> <p>Hole in wall , at 9 o'clock</p> <p>Hole in wall , at 3 o'clock</p> <p>Connection, poor workmanship, connection appears to be open , diameter 100mm</p> <p>Connection, good workmanship, connection appears to be open, diameter 150mm , at 12 o'clock</p> <p>Hole in wall , at 2 o'clock</p> <p>Hole in wall , at 3 o'clock</p> <p>Intruding connection, magnitude of intrusion: &lt;5%, General Comments AGGI LINE, at 1 o'clock</p> <p>Intruding connection, magnitude of intrusion: &lt;5%, General Comments AGGI LINE, at 11 o'clock</p> <p>Hole in wall , at 3 o'clock</p>	<p>1.1 m // 00:00:26</p> <p>2.33 m // 00:01:01</p> <p>100</p> <p>4.78 m // 00:02:09</p> <p>100</p> <p>4.99 m // 00:02:31</p> <p>100</p> <p>4.99 m // 00:02:31</p>

City :



QURON P/L

CAMPERDOWN 1450

Tel:

Email: quron@bigpond.com

## Inspection Report

Date : <b>24/04/2019</b>	Job number :	Weather :	Operator : <b>ADAM</b>	Counter : <b>1</b>	Pipe Asset Id :
Present :	Vehicle :	Camera :	Preset :	Cleaned :	Rate :

1:324	Position	Observation	Str Rate
	<u>39.64</u>	Intruding connection, magnitude of intrusion: <5%, General Comments AGGI LINE, at 12 o'clock	
	<u>39.64</u>	Reinforcement is exposed and corroded, at joint , from 10 to 2 o'clock	
	<u>40.48</u>	Hole in wall , at 1 o'clock	
	<u>40.85</u>	Hole in wall , at 12 o'clock	
	<u>43.32</u>	Hole in wall , at 12 o'clock	
	<u>45.89</u>	Hole in wall , at 12 o'clock	
	<u>48.25</u>	Hole in wall , at 12 o'clock	
	<u>50.77</u>	Hole in wall , at 12 o'clock	
	<u>53.15</u>	Hole in wall , at 12 o'clock	
	<u>55.61</u>	Hole in wall , at 12 o'clock	
	<u>58.09</u>	Hole in wall , at 12 o'clock	
	<u>59.48</u>	Hole in wall , at 12 o'clock	
	<u>60.11</u>	Obstruction, dislodged brick or masonry unit lying in the invert , reduction in cross sectional area: 5-20% , at 6 o'clock	
	<u>61.41</u>	Finish node, Nodename: SPP50848, BURIED ACCESS PIT	

## Inspection Pictures

Location/Street <b>TASMAN RD</b>	Town or suburb:	Date : <b>24/04/2019</b>	Section number: <b>1</b>	Sewer Ref.: <b>SPI56440</b>
-------------------------------------	-----------------	-----------------------------	-----------------------------	--------------------------------



Photo: 2\_1\_2\_24042019\_122516\_A.JPG  
1.1m, Intruding connection, magnitude of intrusion: <5%,  
General Comments AGGI LINE, at 11 o'clock



Photo: 2\_1\_3\_24042019\_122619\_A.JPG  
2.33m, Deposit is fine sediments- Sand or Silt in the invert, at joint , Obstruction: 5-20% , from 5 to 7 o'clock



Photo: 2\_1\_4\_24042019\_122920\_A.JPG  
4.78m, Defective Connection - The connecting pipe is damaged, magnitude of obstruction <5%, General Comments NOT FULLY ENTERING PIPE, at 10 o'clock



Photo: 2\_1\_5\_24042019\_123001\_A.JPG  
4.99m, A Mass of mostly fine Roots, which has developed into an interwoven clump, at joint, Obstruction: 5-20% , from 4 to 8 o'clock



## Inspection Pictures

Location/Street <b>TASMAN RD</b>	Town or suburb:	Date : <b>24/04/2019</b>	Section number: <b>1</b>	Sewer Ref.: <b>SPI56440</b>
-------------------------------------	-----------------	-----------------------------	-----------------------------	--------------------------------



Photo: 2\_1\_5\_24042019\_123007\_B.JPG  
4.99m, A Mass of mostly fine Roots, which has developed into an interwoven clump, at joint, Obstruction: 5-20% , from 4 to 8 o'clock



Photo: 2\_1\_7\_24042019\_123135\_A.JPG  
10.64m, Hole in wall , at 9 o'clock



Photo: 2\_1\_8\_24042019\_123420\_A.JPG  
15.88m, Hole in wall , at 3 o'clock



Photo: 2\_1\_11\_24042019\_123930\_A.JPG  
26.62m, Hole in wall , at 2 o'clock

### Inspection Pictures

Location/Street <b>TASMAN RD</b>	Town or suburb:	Date : <b>24/04/2019</b>	Section number: <b>1</b>	Sewer Ref.: <b>SPI56440</b>
-------------------------------------	-----------------	-----------------------------	-----------------------------	--------------------------------



Photo: 2\_1\_12\_24042019\_124101\_A.JPG  
33.61m, Hole in wall , at 3 o'clock



Photo: 2\_1\_13\_24042019\_124200\_A.JPG  
37.62m, Intruding connection, magnitude of intrusion: <5%,  
General Comments AGGI LINE, at 1 o'clock



Photo: 2\_1\_14\_24042019\_124238\_A.JPG  
37.95m, Intruding connection, magnitude of intrusion: <5%,  
General Comments AGGI LINE, at 11 o'clock



Photo: 2\_1\_15\_24042019\_124412\_A.JPG  
39.32m, Hole in wall , at 3 o'clock

### Inspection Pictures

Location/Street <b>TASMAN RD</b>	Town or suburb:	Date : <b>24/04/2019</b>	Section number: <b>1</b>	Sewer Ref.: <b>SPI56440</b>
-------------------------------------	-----------------	-----------------------------	-----------------------------	--------------------------------



Photo: 2\_1\_16\_24042019\_124451\_A.JPG  
39.64m, Intruding connection, magnitude of intrusion: <5%,  
General Comments AGGI LINE, at 12 o'clock



Photo: 2\_1\_17\_24042019\_124523\_A.JPG  
39.64m, Reinforcement is exposed and corroded, at joint , from  
10 to 2 o'clock



Photo: 2\_1\_18\_24042019\_124547\_A.JPG  
40.48m, Hole in wall , at 1 o'clock



Photo: 2\_1\_19\_24042019\_124605\_A.JPG  
40.85m, Hole in wall , at 12 o'clock

### Inspection Pictures

Location/Street <b>TASMAN RD</b>	Town or suburb:	Date : <b>24/04/2019</b>	Section number: <b>1</b>	Sewer Ref.: <b>SPI56440</b>
-------------------------------------	-----------------	-----------------------------	-----------------------------	--------------------------------



Photo: 2\_1\_20\_24042019\_124653\_A.JPG  
43.32m, Hole in wall , at 12 o'clock



Photo: 2\_1\_21\_24042019\_124746\_A.JPG  
45.89m, Hole in wall , at 12 o'clock



Photo: 2\_1\_22\_24042019\_124946\_A.JPG  
48.25m, Hole in wall , at 12 o'clock



Photo: 2\_1\_23\_24042019\_125037\_A.JPG  
50.77m, Hole in wall , at 12 o'clock

### Inspection Pictures

Location/Street <b>TASMAN RD</b>	Town or suburb:	Date : <b>24/04/2019</b>	Section number: <b>1</b>	Sewer Ref.: <b>SPI56440</b>
-------------------------------------	-----------------	-----------------------------	-----------------------------	--------------------------------



Photo: 2\_1\_24\_24042019\_125127\_A.JPG  
53.15m, Hole in wall , at 12 o'clock



Photo: 2\_1\_25\_24042019\_125230\_A.JPG  
55.61m, Hole in wall , at 12 o'clock



Photo: 2\_1\_26\_24042019\_125319\_A.JPG  
58.09m, Hole in wall , at 12 o'clock



Photo: 2\_1\_27\_24042019\_125404\_A.JPG  
59.48m, Hole in wall , at 12 o'clock

## Inspection Pictures

Location/Street <b>TASMAN RD</b>	Town or suburb:	Date : <b>24/04/2019</b>	Section number: <b>1</b>	Sewer Ref.: <b>SPI56440</b>
-------------------------------------	-----------------	-----------------------------	-----------------------------	--------------------------------



Photo: 2\_1\_28\_24042019\_125456\_A.JPG  
60.11m, Obstruction, dislodged brick or masonry unit lying in the invert , reduction in cross sectional area: 5-20% , at 6 o'clock



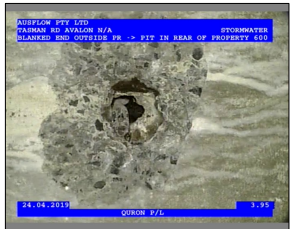




### WSA assessment

Date: <b>24/04/2019</b>	Case No.: <b>N/A</b>	Asset Owner: <b>AUSFLOW PTY LTD</b>	Operator : <b>ADAM</b>	Section number: <b>2</b>	Pipe Asset Id: <b>SPI56439</b>
Time of inspection: <b>13:00:53</b>	Cleaning:	Standard: <b>WSA 05-2008 2.2</b>	LRP	Conduit Unit Length	Method of Inspection

Town: Suburb: <b>AVALON</b> Street: <b>TASMAN RD</b> Asset Location <b>Light road</b>	Catchment: Asset Owner: <b>AUSFLOW PTY LTD</b> Precipitation.: Flow control	US MH: <b>SPP50849</b> Survey Dir: <b>Upstream</b> DS MH: <b>SPP50848</b> Inspect Length : <b>94.56 m</b>
--	--	--

Purpose of inspection : <b>Locating a conduit, connection or a maintenance structure</b>	Shape : <b>Circular</b>
Use of Conduit: <b>Storm water drain</b>	Dia/Height: <b>600 mm</b>
Type of Conduit: <b>Storm water drain</b>	Lining: <b>Reinforced concrete</b>
Lining Method:	Pipe Material: <b>Reinforced concrete</b>

Remarks :

1:378 Position	Observation	Str Rate
0.00	Start node, Nodename: SPP50848, BURIED ACCESS PIT	
1.17	Connection, good workmanship, connection appears to be open, diameter 150mm , at 12 o'clock	
3.95	Hole in wall , at 12 o'clock	100 
6.40	Hole in wall , at 12 o'clock	100 
8.89	Hole in wall , at 12 o'clock	100 
12.16	Hole in wall , from 11 to 1 o'clock	100
12.16	Reinforcement is exposed and corroded , from 11 to 1 o'clock	80
16.13	Hole in wall , at 12 o'clock	100 
20.26	Connection, good workmanship, connection appears to be open, diameter 100mm , at 10 o'clock	
21.30	Hole in wall , at 12 o'clock	100
23.72	Hole in wall , at 9 o'clock	100
33.21	Connection, poor workmanship, connection appears to be open , diameter 100mm	
33.21	Hole in wall , from 9 to 11 o'clock	100 
39.87	Hole in wall , from 10 to 11 o'clock	100
47.39	Hole in wall , at 12 o'clock	100



## Inspection Report

Date : <b>24/04/2019</b>	Job number :	Weather :	Operator : <b>ADAM</b>	Counter : <b>2</b>	Pipe Asset Id :
Present :	Vehicle :	Camera :	Preset :	Cleaned :	Rate :

1:378	Position	Observation	Str Rate
	51.45	Connection, good workmanship, connection appears to be open, diameter 100mm , at 1 o'clock	
	55.50	A Mass of mostly fine Roots, which has developed into an interwoven clump , Obstruction: 21-50% , from 4 to 8 o'clock	
	64.68	Hole in wall , at 12 o'clock	
	69.36	Hole in wall , at 2 o'clock	
	69.36	Obstruction, an object is intruding through the wall , reduction in cross sectional area: <5%, General Comments CONDUIT, from 10 to 2 o'clock	
	70.67	Hole in wall , at 3 o'clock	
	71.27	Hole in wall , at 9 o'clock	
	72.08	Hole in wall , at 9 o'clock	
	72.08	Reinforcement is exposed and corroded , at 9 o'clock	
	72.92	Connection, poor workmanship, connection appears to be open , diameter 100mm	
	78.04	Deposit is fine sediments- Sand or Silt in the invert , Obstruction: 5-20% , from 5 to 7 o'clock	
	79.51	Connection, good workmanship, connection appears to be open, diameter 100mm , at 3 o'clock	
	79.51	Deposit is coarse sediments- Gravel or Rubble in the invert , Obstruction: <5% , at 5 o'clock	
	80.15	Connection, good workmanship, connection appears to be open, diameter 100mm , at 3 o'clock	
	80.57	Hole in wall , at 12 o'clock	
	94.56	Finish node, dead end, Nodename: SPP50849	

STR no def	STR peak	STR mean	STR total	STR grade	SER no def	SER peak	SER mean	SER total	SER grade
18	280	18.61	1760	5	4	40	0.85	80	4



## Inspection Pictures

Location/Street <b>TASMAN RD</b>	Town or suburb:	Date : <b>24/04/2019</b>	Section number: <b>2</b>	Sewer Ref.: <b>SPI56439</b>
-------------------------------------	-----------------	-----------------------------	-----------------------------	--------------------------------

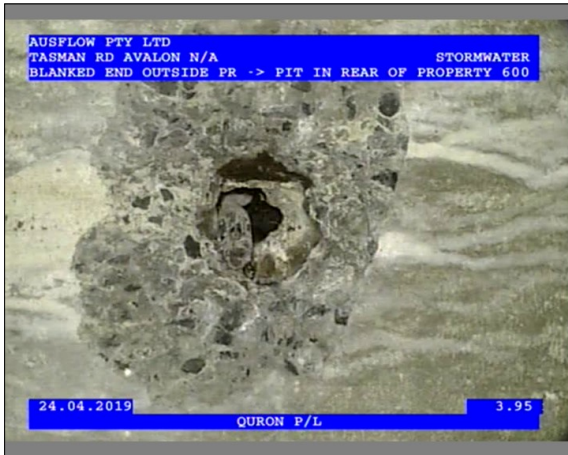


Photo: 3\_1\_3\_24042019\_131101\_A.JPG  
3.95m, Hole in wall , at 12 o'clock



Photo: 3\_1\_4\_24042019\_131436\_A.JPG  
6.4m, Hole in wall , at 12 o'clock



Photo: 3\_1\_5\_24042019\_131711\_A.JPG  
8.89m, Hole in wall , at 12 o'clock



Photo: 3\_1\_6\_24042019\_131843\_A.JPG  
12.16m, Hole in wall , from 11 to 1 o'clock

### Inspection Pictures

Location/Street <b>TASMAN RD</b>	Town or suburb:	Date : <b>24/04/2019</b>	Section number: <b>2</b>	Sewer Ref.: <b>SPI56439</b>
-------------------------------------	-----------------	-----------------------------	-----------------------------	--------------------------------



Photo: 3\_1\_7\_24042019\_131909\_A.JPG  
12.16m, Reinforcement is exposed and corroded , from 11 to 1 o'clock



Photo: 3\_1\_8\_24042019\_132022\_A.JPG  
16.13m, Hole in wall , at 12 o'clock



Photo: 3\_1\_9\_24042019\_132215\_A.JPG  
20.26m, Connection, good workmanship, connection appears to be open, diameter 100mm , at 10 o'clock



Photo: 3\_1\_10\_24042019\_132300\_A.JPG  
21.3m, Hole in wall , at 12 o'clock

### Inspection Pictures

Location/Street <b>TASMAN RD</b>	Town or suburb:	Date : <b>24/04/2019</b>	Section number: <b>2</b>	Sewer Ref.: <b>SPI56439</b>
-------------------------------------	-----------------	-----------------------------	-----------------------------	--------------------------------



Photo: 3\_1\_11\_24042019\_132420\_A.JPG  
23.72m, Hole in wall , at 9 o'clock



Photo: 3\_1\_13\_24042019\_132720\_A.JPG  
33.21m, Hole in wall , from 9 to 11 o'clock



Photo: 3\_1\_13\_24042019\_132726\_B.JPG  
33.21m, Hole in wall , from 9 to 11 o'clock



Photo: 3\_1\_14\_24042019\_132908\_A.JPG  
39.87m, Hole in wall , from 10 to 11 o'clock

## Inspection Pictures

Location/Street <b>TASMAN RD</b>	Town or suburb:	Date : <b>24/04/2019</b>	Section number: <b>2</b>	Sewer Ref.: <b>SPI56439</b>
-------------------------------------	-----------------	-----------------------------	-----------------------------	--------------------------------



Photo: 3\_1\_15\_24042019\_133015\_A.JPG  
47.39m, Hole in wall , at 12 o'clock



Photo: 3\_1\_17\_24042019\_133342\_A.JPG  
55.5m, A Mass of mostly fine Roots, which has developed into an interwoven clump , Obstruction: 21-50% , from 4 to 8 o'clock



Photo: 3\_1\_17\_24042019\_133347\_B.JPG  
55.5m, A Mass of mostly fine Roots, which has developed into an interwoven clump , Obstruction: 21-50% , from 4 to 8 o'clock

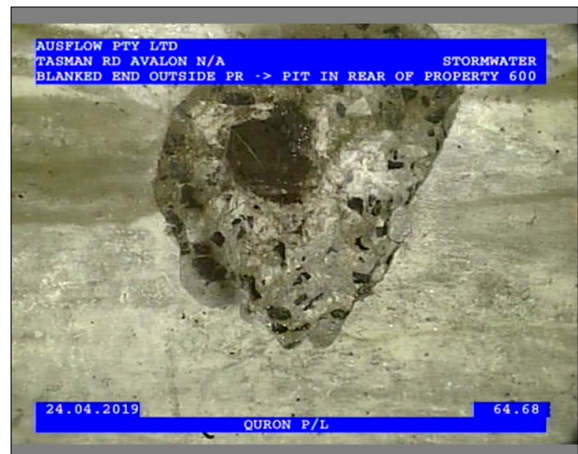


Photo: 3\_1\_18\_24042019\_134029\_A.JPG  
64.68m, Hole in wall , at 12 o'clock

## Inspection Pictures

Location/Street <b>TASMAN RD</b>	Town or suburb:	Date : <b>24/04/2019</b>	Section number: <b>2</b>	Sewer Ref.: <b>SPI56439</b>
-------------------------------------	-----------------	-----------------------------	-----------------------------	--------------------------------



Photo: 3\_1\_19\_24042019\_134125\_A.JPG  
69.36m, Hole in wall , at 2 o'clock



Photo: 3\_1\_20\_24042019\_134302\_A.JPG  
69.36m, Obstruction, an object is intruding through the wall , reduction in cross sectional area: <5%, General Comments CONDUIT, from 10 to 2 o'clock



Photo: 3\_1\_20\_24042019\_134312\_B.JPG  
69.36m, Obstruction, an object is intruding through the wall , reduction in cross sectional area: <5%, General Comments CONDUIT, from 10 to 2 o'clock



Photo: 3\_1\_21\_24042019\_134342\_A.JPG  
70.67m, Hole in wall , at 3 o'clock

### Inspection Pictures

Location/Street <b>TASMAN RD</b>	Town or suburb:	Date : <b>24/04/2019</b>	Section number: <b>2</b>	Sewer Ref.: <b>SPI56439</b>
-------------------------------------	-----------------	-----------------------------	-----------------------------	--------------------------------



Photo: 3\_1\_22\_24042019\_134414\_A.JPG  
71.27m, Hole in wall , at 9 o'clock



Photo: 3\_1\_23\_24042019\_134443\_A.JPG  
72.08m, Hole in wall , at 9 o'clock



Photo: 3\_1\_24\_24042019\_134511\_A.JPG  
72.08m, Reinforcement is exposed and corroded , at 9 o'clock



Photo: 3\_1\_25\_24042019\_134545\_A.JPG  
72.92m, Connection, poor workmanship, connection appears to be open , diameter 100mm

## Inspection Pictures

Location/Street <b>TASMAN RD</b>	Town or suburb:	Date : <b>24/04/2019</b>	Section number: <b>2</b>	Sewer Ref.: <b>SPI56439</b>
-------------------------------------	-----------------	-----------------------------	-----------------------------	--------------------------------



Photo: 3\_1\_26\_24042019\_134649\_A.JPG  
78.04m, Deposit is fine sediments- Sand or Silt in the invert ,  
Obstruction: 5-20% , from 5 to 7 o'clock



Photo: 3\_1\_26\_24042019\_134654\_B.JPG  
78.04m, Deposit is fine sediments- Sand or Silt in the invert ,  
Obstruction: 5-20% , from 5 to 7 o'clock

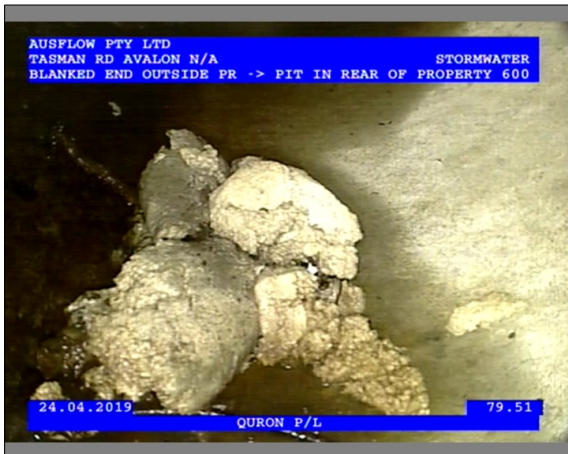


Photo: 3\_1\_28\_24042019\_134754\_A.JPG  
79.51m, Deposit is coarse sediments- Gravel or Rubble in the  
invert , Obstruction: <5% , at 5 o'clock



Photo: 3\_1\_30\_24042019\_134859\_A.JPG  
80.57m, Hole in wall , at 12 o'clock

## Inspection Pictures

Location/Street <b>TASMAN RD</b>	Town or suburb:	Date : <b>24/04/2019</b>	Section number: <b>2</b>	Sewer Ref.: <b>SPI56439</b>
-------------------------------------	-----------------	-----------------------------	-----------------------------	--------------------------------



Photo: 3\_1\_31\_01052019\_111808\_A.jpg  
94.56m, Finish node, dead end, Nodename: SPP50849



Photo: 3\_1\_31\_01052019\_111841\_B.jpg  
94.56m, Finish node, dead end, Nodename: SPP50849