

LANDSCAPE DEVELOPMENT APPLICATION PLANS

COUNCIL REQUIREMENTS - NORTHERN BEACHES COUNCIL

THE LANDSCAPE PLAN IS IN GENERAL ACCORDANCE WITH COUNCIL PLANNING CONTROLS:
 • PITTWATER DEVELOPMENT CONTROL PLAN
 • PITTWATER LOCAL ENVIRONMENTAL PLAN 2014
 • PITTWATER NATIVE GARDENING BOOKLET - PART 5 - ROLLING HILLS 7 LOWER SHALE SLOPES
 • APARTMENT DESIGN GUIDELINES (ADG) 2015

CONTROLS

CANOPY TREES REQUIRED TO BE NATIVE SPECIES:
 COUNCIL CONTROL = 100%
 PROPOSED = 100%

ALL OTHER PLANTS REQUIRED TO BE AUSTRALIAN NATIVE SPECIES:
 COUNCIL CONTROL = 50%

ALL OTHER PROPOSED AUSTRALIAN NATIVE SPECIES - 21 / 29
 72.4% OF ALL OTHER TOTAL PROPOSED PLANT SPECIES

ALL OTHER PROPOSED AUSTRALIAN NATIVES
 BY QUANTITY - 4235 / 549
 78% OF ALL OTHER PROPOSED QUANTITY

LANDSCAPE AREA/DEEP SOIL REQUIREMENTS:
 REFER TO ARCHITECTS DRAWINGS

ARBORICULTURAL ASSESSMENT
 REFER TO ARBORICULTURAL IMPACT ASSESSMENT REPORT PREPARED BY
 'EZI GROW' CONSULTANTS

LANDSCAPE INSTALLATION SPECIFICATION

- PLANTER BEDS
- Minimum soil depths and volume for planting on any structure as per ADG.
 - Large Trees (2-18m High): 1200mm / 150m3
 - Medium Trees (8-12m High): 1000mm / 35m3
 - Small Trees (6-8m High): 800mm / 9m3
 - Shrubs: 500 - 600mm
 - Groundcovers: 300 - 450mm
 - Turf: 200mm

- Suitable drainage implemented through use of ag lines, drainage flow cell and geotech fabric.
- Soil to be ANL Planter Box Mix, or equivalent: Blend of soil, coarse sand, graded ash, nepean sand, composted sawdust, botany humus and composted pine bark.
- Soil to be between 20-50mm below top of retaining wall height to allow for dropping.

TURFING

- Turf to be laid on minimum 100mm turf underlay.
- Turf underlay to be ANL Sand / Soil Blend, or equivalent.
- Turf to be Sir Walter Turf - Premium Buffalo Grass (Registered PBR), supplied by President Turf, or equivalent.

MULCHING

- Place mulch to minimum depth of 75mm, clear of plant stems, and rake to an even surface flush with the surrounding finished levels and consistent in depth.
- Trees in lawn areas to have 750mm diameter of mulch surrounding.
- Mulch for general garden areas, pots, and planters to be Australian Native Landscapes (ANL) Greenlife Mulch and Compost, or equivalent.

TREE PLANTING

- Excavate holes in accordance with dimension of container. The depth of the holes is to be equivalent to the container height plus 100mm and the width of the hole is to be twice that of the container.
- Locate tree to centre of hole and backfill with soil. Firm about root ball.
- All plant material, 45 Litres or over, to be staked.

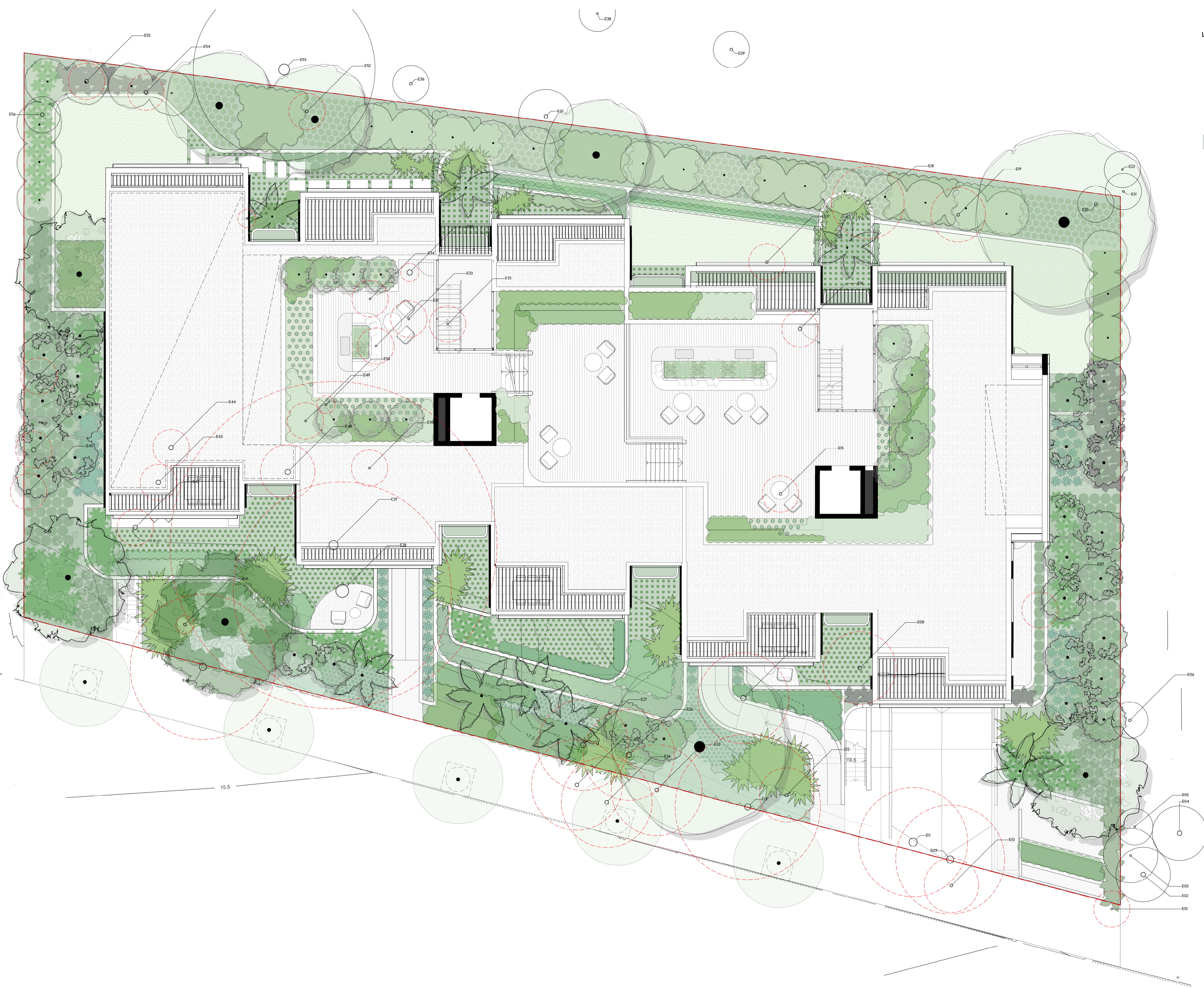
IRRIGATION

- Automated irrigation system to be implemented. Reputable irrigation brands are to be sourced.
- Use drip lines with emitters at 300mm spacing's for all garden beds.
- Use pop-up spray heads for all lawn areas. Pop-up spray heads are to be spaced according to product specification.
- Conceal irrigation below the mulch layer in planting areas and 150mm below the surface of turf areas. Conceal all components including pipework, fittings, valves, and control equipment.

EXISTING TREE SCHEDULE

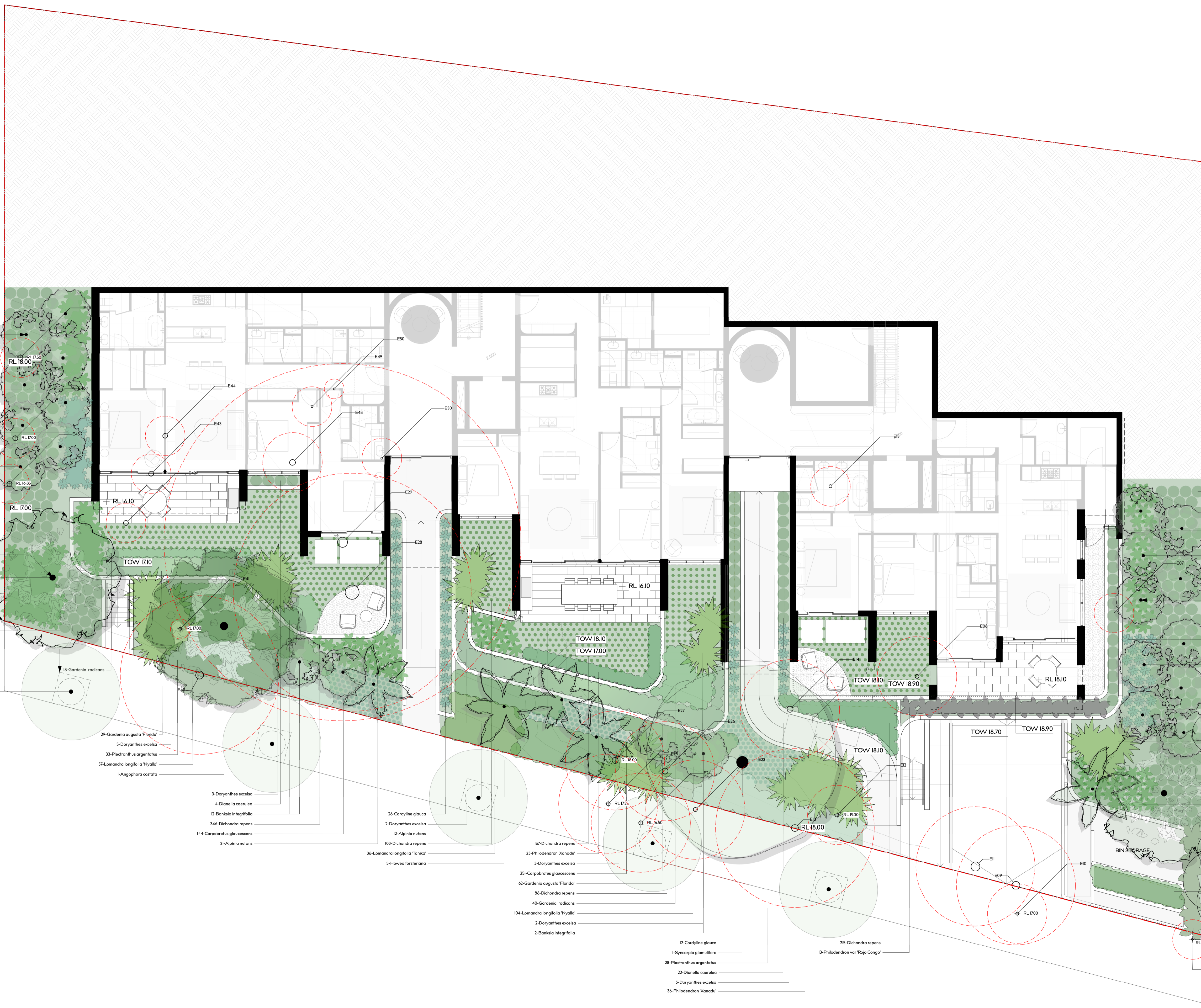
TREE NO.	GENUS SPECIES	HEIGHT	CANOPY	CALLIPER	ACTION/COMMENT
E01	Ligustrum sp.	2000	2000	100	Remove
E02	Syagrus romanzoffiana	8000	3000	250	Retain
E03	Syzgium sp.	5000	3000	100	Retain
E04	Archontophoenix alexandrae	9000	3000	250	Retain
E05	Syzgium sp.	5000	2000	100	Retain
E06	Archontophoenix alexandrae	6000	2000	150	Retain
E07	Unknown vines	2000	2000	0	Remove
E08	Callistemon sp.	5000	4000	200	Remove
E09	Eucalyptus capitellata	15000	6000	400	Remove
E10	Angophora costata	5000	3000	150	Remove
E11	Eucalyptus capitellata	15000	6000	450	Remove
E12	Cinnamomum camphora	4000	3000	150	Remove
E13	Eucalyptus capitellata	15000	8000	350	Remove
E14	Lagerstroemia indica	5000	5000	300	Remove
E15	Murraya paniculata	3000	2000	150	Remove
E16	Waterhousia floribunda	4000	2000	200	Remove
E17	Hibiscus sp.	2000	2000	150	Remove
E18	Letospermum petersonii	6000	4000	250	Remove
E19	Letospermum petersonii	5000	3000	150	Remove
E20	Waterhousia floribunda	5000	2000	150	Retain
E21	Archontophoenix alexandrae	6000	2000	100	Retain
E22	Archontophoenix alexandrae	6000	2000	100	Retain
E23	Acacia falcata	16000	5000	200	Remove
E24	Acacia falcata	16000	5000	200	Remove
E25	Acacia falcata	16000	5000	200	Remove
E26	Acacia falcata	16000	5000	300	Remove
E27	Acacia falcata	16000	5000	300	Remove
E28	Eucalyptus paniculata	24000	12000	700	Remove
E29	Syncarpia glomulifera	20000	18000	500	Remove
E30	Howea forsteriana	3000	2000	100	Remove
E31	Howea forsteriana	3000	2000	100	Remove
E32	Archontophoenix alexandrae	5000	2000	100	Remove
E33	Archontophoenix alexandrae	5000	2000	100	Remove
E34	Yucca sp.	14000	2000	100	Remove
E35	Archontophoenix alexandrae	3000	1000	300	Remove
E36	Archontophoenix alexandrae	5000	2000	150	Retain
E37	Syzgium sp.	5000	3000	200	Retain
E38	Archontophoenix alexandrae	4000	2000	100	Retain
E39	Archontophoenix alexandrae	8000	2000	150	Retain
E40	Melaleuca quinquenervia	10000	8000	400	Remove
E41	Callistemon sp.	1000	1000	150	Remove
E42	Syagrus romanzoffiana	3000	2000	250	Remove
E43	Syagrus romanzoffiana	10000	2000	250	Remove
E44	Syagrus romanzoffiana	8000	2000	250	Remove
E45	Syagrus romanzoffiana	8000	2000	250	Remove
E46	Syagrus romanzoffiana	8000	2000	250	Remove
E47	Syagrus romanzoffiana	8000	2000	250	Remove
E48	Washingtonia robusta	3000	3000	300	Remove
E49	Dracaena marginata	4000	2000	100	Remove
E50	Dracaena marginata	4000	1000	100	Remove
E51	Dypsis lutescens	4000	1000	100	Remove
E52	Dypsis decaryi	4000	2000	150	Remove
E53	Syncarpia glomulifera	14000	10000	600	Retain
E54	Syagrus romanzoffiana	6000	2000	200	Remove
E55	Syagrus romanzoffiana	8000	2000	200	Remove
E56	Archontophoenix alexandrae	7000	2000	200	Retain

ID	QTY	BOTANICAL NAME	COMMON NAME	SCHEDULED SIZE	MATURE SPREAD	MATURE HEIGHT	REMARKS
Trees							
Anc	3	Melaleuca quinquenervia	Paperbark	200 Ltr	3.5 - 6m	15.0 - 25.0 m	Native
Anc-1	1	Angophora costata	Smooth-barked apple	75 Ltr	5.0 - 10.0m	15.0 - 25.0 m	Native
Bl-1	39	Banksia integrifolia	Coastal Banksia	100 Ltr	3.5 - 6m	5 - 10m	Native
Ec	3	Eucalyptus capitellata	Stringybark	75 Ltr	5.0 - 10.0m	15.0 - 25.0 m	Native
Ep	1	Eucalyptus paniculata	Ironbark	75 Ltr	8.0 - 12.0m	15.0 - 25.0 m	Native
Sgm	1	Syncarpia glomulifera	Turpentine	75 Ltr	8.0 - 12.0m	15.0 - 25.0 m	Native
Palms - Cycads							
Hf-1	8	Howea forsteriana	Kentia Palm	45 Ltr	3.5 - 6m	5 - 10m	Native
Shrubs							
Cg	102	Cordyline glauca	Cordyline	200mm	1.0 - 2.0m	2.0 - 4.0m	
Cs	5	Callistemon salignus	Willow Bottlebrush	200mm	3.5 - 6m	3 - 5m	Native
Gf	131	Gardenia augusta 'Florida'	Gardenia	200mm	0.5 - 0.6m	0.5 - 0.6m	
Pa-4	71	Plectranthus argentatus	Silver plectranthus	140mm	1 - 1.5m	0.8 - 1.0m	Native
Pam	168	Plectranthus 'Mona Lavender'	Mona lavender	140mm	1 - 2m	0.5 - 0.8m	
SsR	25	Syzygium smithii 'Red Tip'	Lilly Pilly	45 Ltr	2.0-3.0m	3.0 - 5.0m	Native
Wff	221	Westringia fruticosa	Coastal Rosemary	140mm	2.0 - 4.0m	1.5 - 2.0m	Native
Perennials							
An	178	Alpinia nutans	Native Cardamom	140mm	1 - 1.5m	1 - 1.5m	
Cam	6	Alocasia brisbanensis	Giant Elephant's Ear	300mm	1 - 1.5m	1 - 1.5m	Native
Deg	38	Doryanthes excelsa	Gymea Lily	400mm	1.5 - 2.0m	1.5 - 3.0m	Native
Ms	40	Mentha australis	Australian Mint	200mm	0.5 - 0.6m	0.5 - 0.6m	Native
Prc	44	Philodendron var 'Rojo Congo'	Philodendron	200mm	0.8 - 1m	0.8 - 1m	
Px	59	Philodendron 'Xanadu'	Philodendron	200mm	0.8 - 1m	1 - 1.2m	
Grasses							
Dc	387	Dianella caerulea	Blue Flax Lily	140mm	0.6 - 0.7 m	0.6 - 0.7 m	Native
Lln	398	Lomandra longifolia 'Nyalla'	Spiny-headed mat rush	140mm	0.8 - 0.9m	0.8 - 0.9m	Native
Llt	558	Lomandra longifolia 'Tanika'	Spiny-headed mat rush	140mm	0.6 - 0.65m	0.5 - 0.6m	Native
Msa	153	Miscanthus sinensis 'Adagio'	Dwarf Maiden Grass	140mm	0.4 - 0.6m	0.5 - 0.6m	Native
Groundcovers							
Cg-3	786	Carpobrotus glaucescens	Pigface	140mm	1.2 - 2.0m	0.0 - 0.3m	Native
Dr	1433	Dichondra repens	Kidney Weed	140mm	0.9 - 1.2m	0.0 - 0.3m	Native
Gr	122	Gardenia radicans	Creeping Gardenia	140mm	1 - 1.5m	0.4 - 0.5m	
Ta	407	Trachelospermum asiaticum	Japanese star jasmine	140mm	0.5 - 1m	0.3 - 0.4m	
Climbers							
Ppj	13	Pandorea jasminoides	Slender Bells	300mm	0.6 - 2.0m	2.0 - 3.0m	Native
Total:	5401						



- LEGEND**
- BOUNDARY LINE
 - + EL 35.40 EXISTING LEVELS
 - + RL 35.40 PROPOSED LEVELS
 - + TOW 35.40 TOP OF WALL LEVELS
 - TRES TO BE RETAINED
 - ⊗ TRES TO BE REMOVED
 - LAWN

- LEGEND**
- BOUNDARY LINE
 - + EL 35.40 EXISTING LEVELS
 - + RL 35.40 PROPOSED LEVELS
 - + TOW 35.40 TOP OF WALL LEVELS
 - TREES TO BE RETAINED
 - TREES TO BE REMOVED
 - LAWN



GROVE OF BANKSIA TREES FOR VARIED TREE CANOPY

PROPOSED MELALEUCA QUINQUEVEVIA TO EXTEND EXISTING CANOPY ALONG STREET

STREET TREE SELECTED FROM PITTVATER WARD, NATIVE PLANTING GUIDE TREE PIT 1.6m WIDE PLANTED AT 10m CENTRES ACCORDING TO NORTHERN BEACHES PUBLIC SPACE VISION AND DESIGN GUIDELINES

127-Dianella caerulea

15-Dianella caerulea

5-Banksia integrifolia

GROVE OF BANKSIA TREES FOR VARIED TREE CANOPY

23-Cordyline glauca

5-Banksia integrifolia

E06

3-Doryanthes excelsa

1-Melaleuca quinquevevia

50-Alpinia nutans

E05

E04

6-RL1920

18-Lomandra longifolia 'Nyallo'

E03

E02

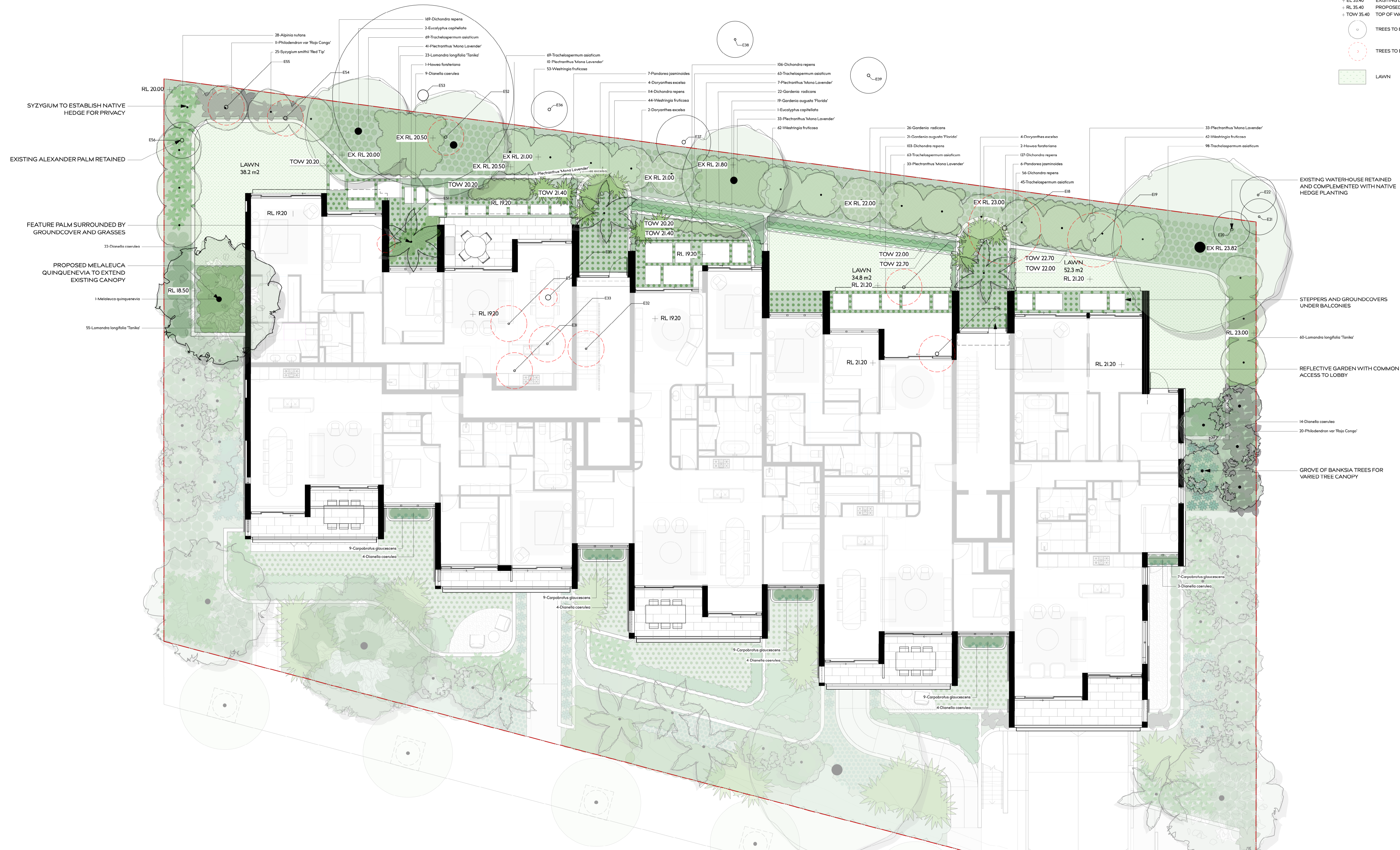
E01

6-Alcacia brisbanensis

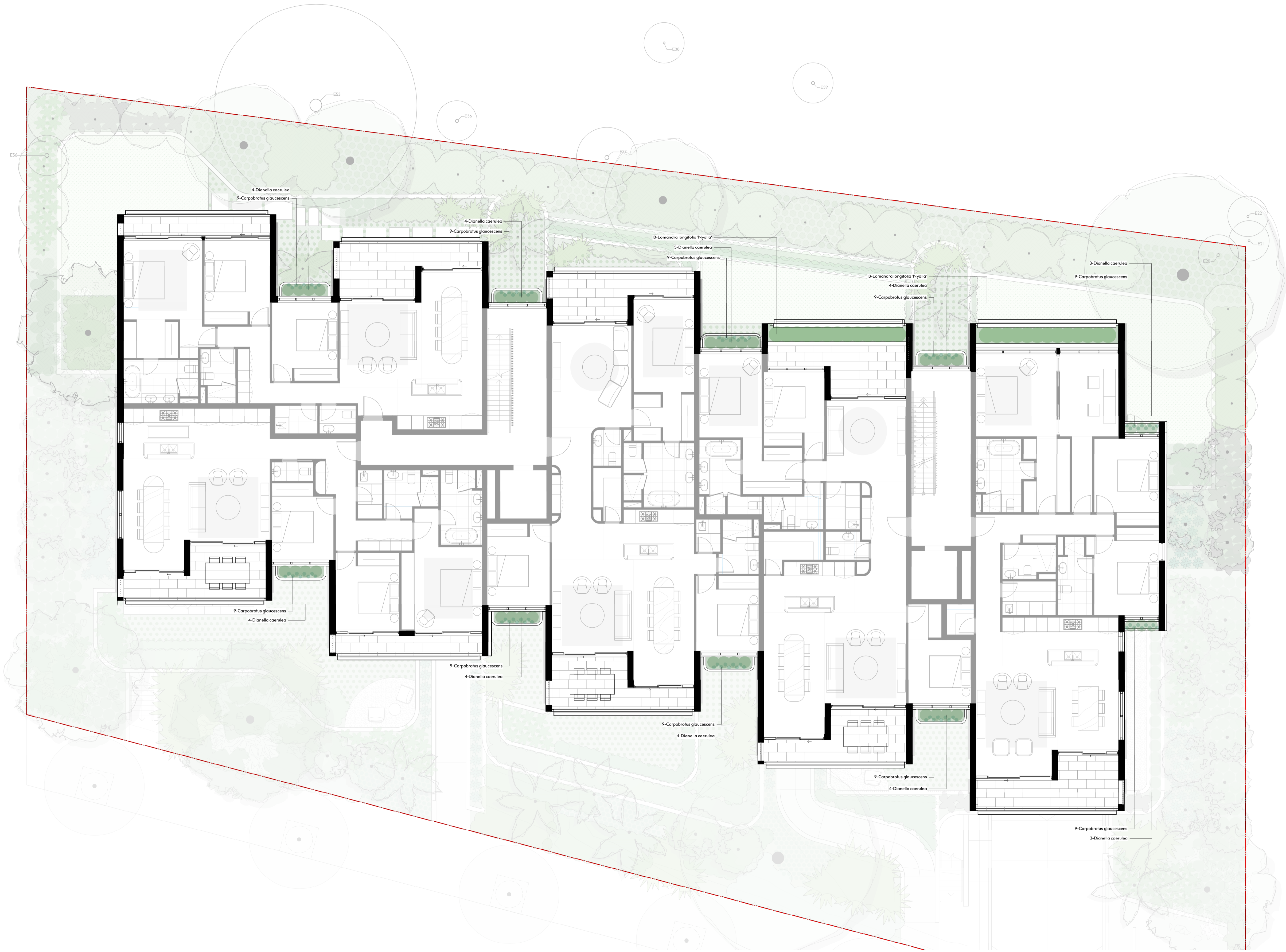
+ TOW 16.92

LEGEND

- BOUNDARY LINE
- + EL 35.40 EXISTING LEVELS
- + RL 35.40 PROPOSED LEVELS
- + TOW 35.40 TOP OF WALL LEVELS
- TRES TO BE RETAINED
- TRES TO BE REMOVED
- LAWN



- LEGEND**
- BOUNDARY LINE
 - + EL 35.40 EXISTING LEVELS
 - + RL 35.40 PROPOSED LEVELS
 - + TOW 35.40 TOP OF WALL LEVELS
 - TREES TO BE RETAINED
 - TREES TO BE REMOVED
 - LAWN



- LEGEND**
- BOUNDARY LINE
 - + EL 35.40 EXISTING LEVELS
 - + RL 35.40 PROPOSED LEVELS
 - + TOW 35.40 TOP OF WALL LEVELS
 - TREES TO BE RETAINED
 - TREES TO BE REMOVED
 - LAWN

