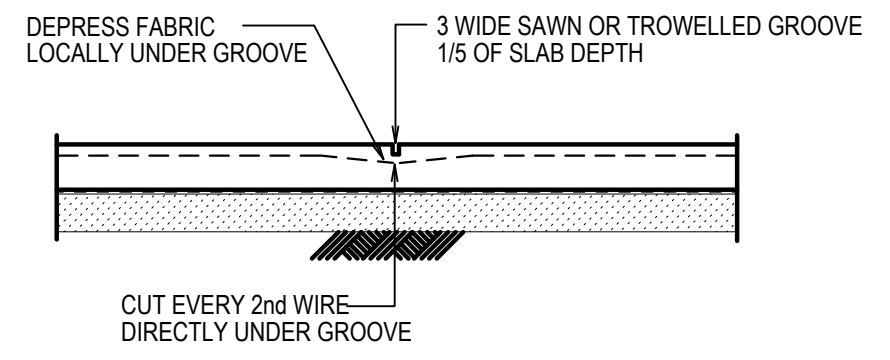
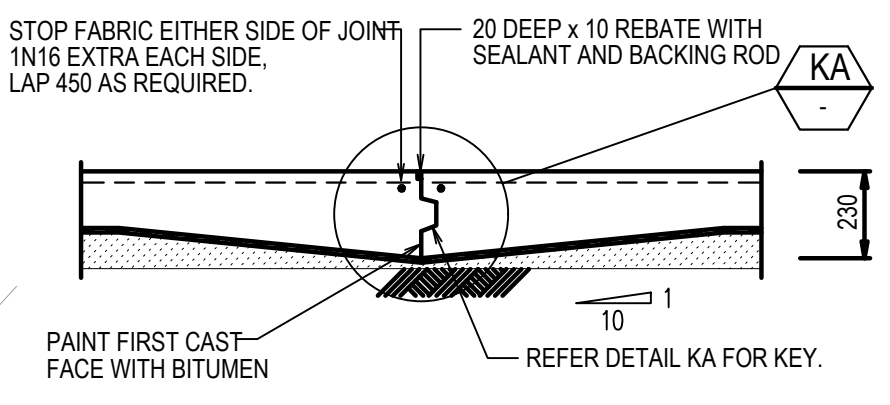


**EXTERNAL WORKS PLAN**  
SCALE 1:100



**S.J. - SAWN CONTROL JOINT**  
SCALE 1:20  
NOTE: SAWCUT TO BE MADE WITHIN 16 HOURS OF CASTING SLAB



**K.J. - KEYED CONSTRUCTION JOINT**  
SCALE 1:20  
CARPARK AND OFFICE FLOORS

**EXTERNAL WORKS & FOOTING NOTES:**

FOOTINGS  $f_c = 32 \text{ MPa}$   
 SITE IN ACCORDANCE WITH AS2870 CLASS M  
 FOOTINGS HAVE BEEN DESIGNED FOR A S.B.C. OF 200 kPa MIN BEARING ON CLAYEY SAND  
 IN LOCATIONS WHERE BEARING IS INADEQUATE OR NON UNIFORM, PROVIDE PIERS IN ACCORDANCE WITH ENGINEERS INSTRUCTIONS ON SITE. IT IS THE BUILDERS RESPONSIBILITY TO ADVISE THE ENGINEER OF ANY SUCH CONDITION PRIOR TO PLACING REINFORCEMENT.

ALL TOPSOIL AND GRASS ROOTS TO BE REMOVED FROM THE AREA ON WHICH THE SLABS ARE TO REST. FILLING TO BE INERT (NON REACTIVE) GRANULAR MATERIAL, WHERE REQUIRED, WELL WATERED AND COMPACTED IN 200 mm. MAX. LAYERS IN ACCORDANCE WITH AS2870.

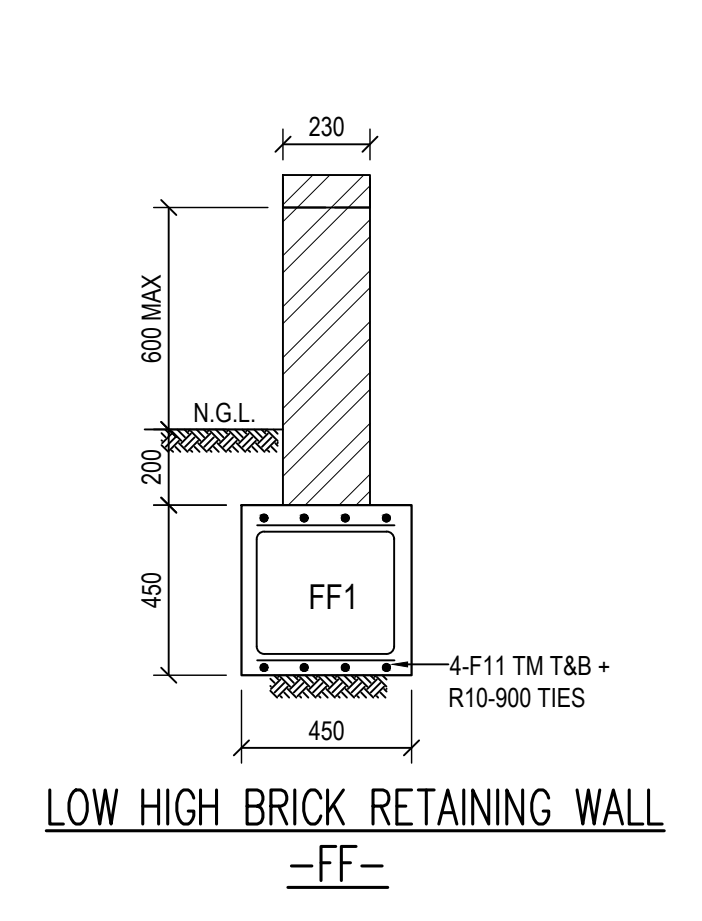
SLAB S1 TO BE 100 THICK WITH SL82 MESH TOP THROUGHOUT.  
 SLAB S2 TO BE 150 THICK WITH SL82 MESH TOP AND BTM. THROUGHOUT.

POUR SLABS OVER 50 COMPACTED SAND BED.

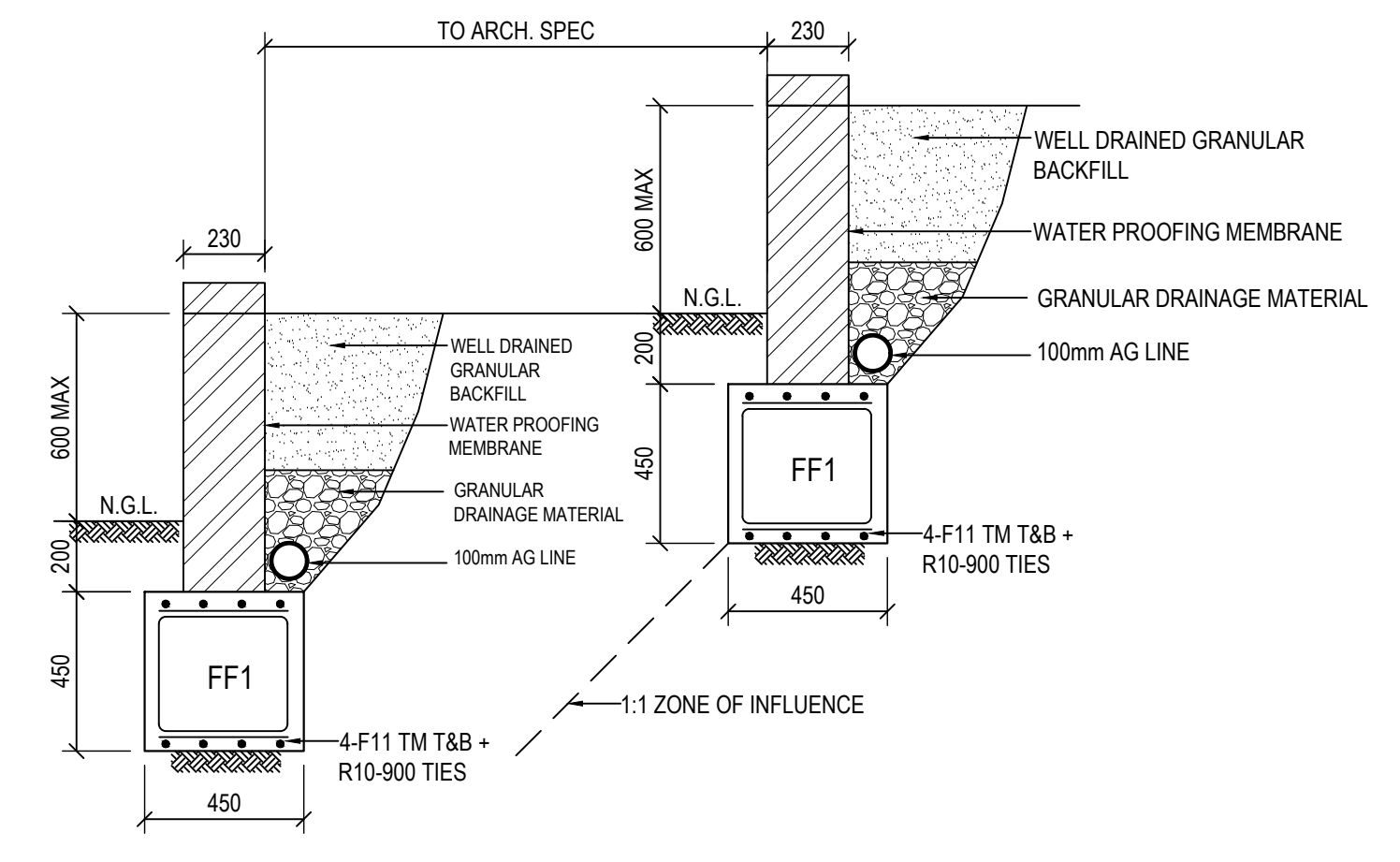
NOTE: ALL SLABS ON GROUND TO BE TYPE S1 UNLESS FILL EXCEEDS 600mm ACCORDINGLY IF FILL EXCEEDS 600mm, USE TYPE S2

SLAB TO BE CURED BY ONE OF THE FOLLOWING METHODS:  
 (i) WETTING TWICE DAILY FOR THE FIRST THREE DAYS.  
 (ii) USING AN APPROVED CURING COMPOUND

VJ DENOTES VERTICAL JOINT IN BRICKWORK  
 KJ DENOTES KEY JOINT  
 GJ DENOTES GROOVE JOINT  
 SJ DENOTES SAW CUT



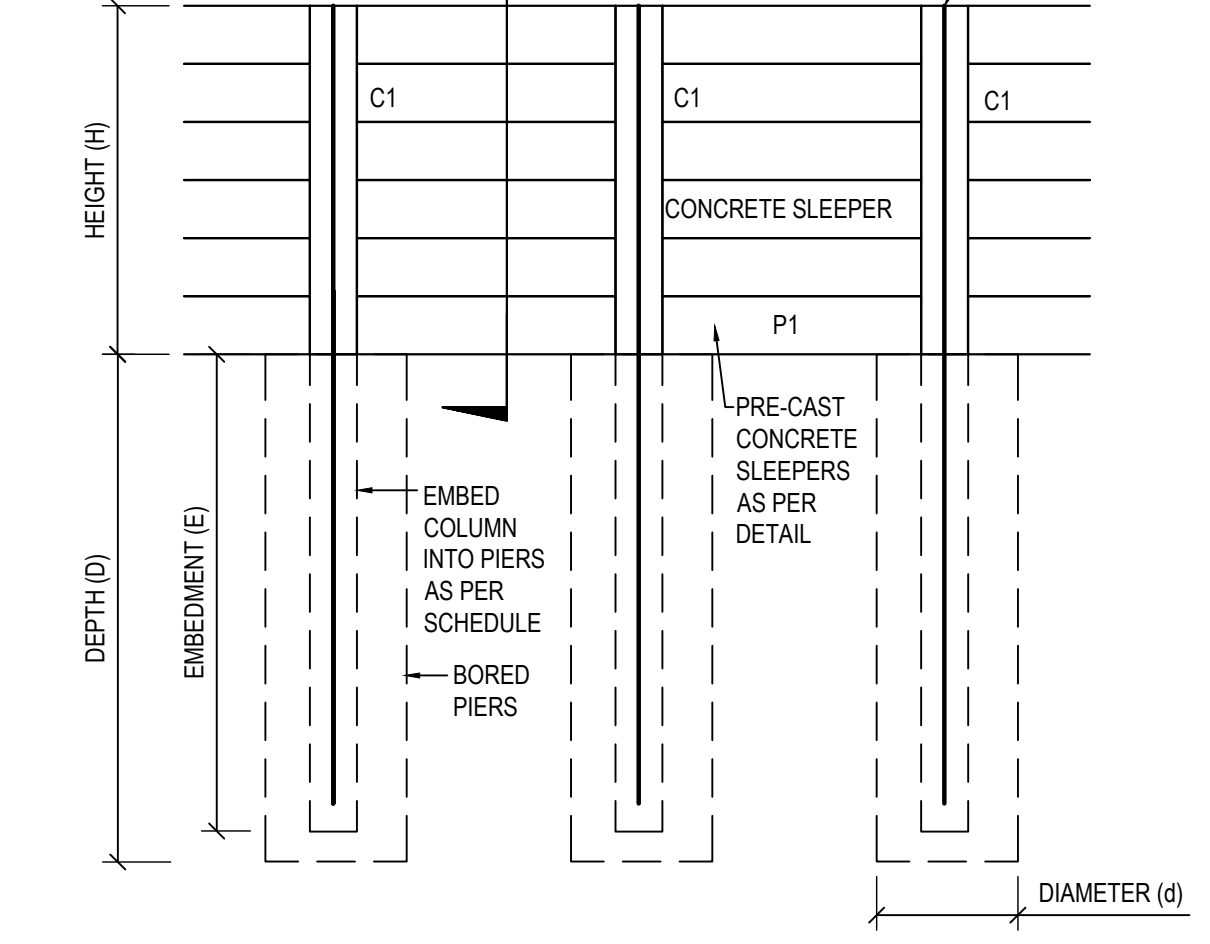
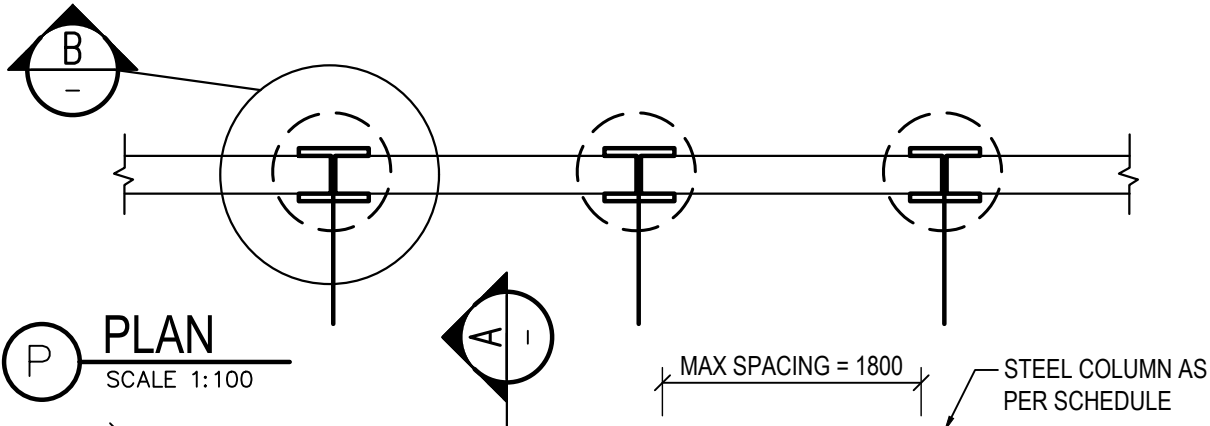
**LOW HIGH BRICK RETAINING WALL**  
-FF-



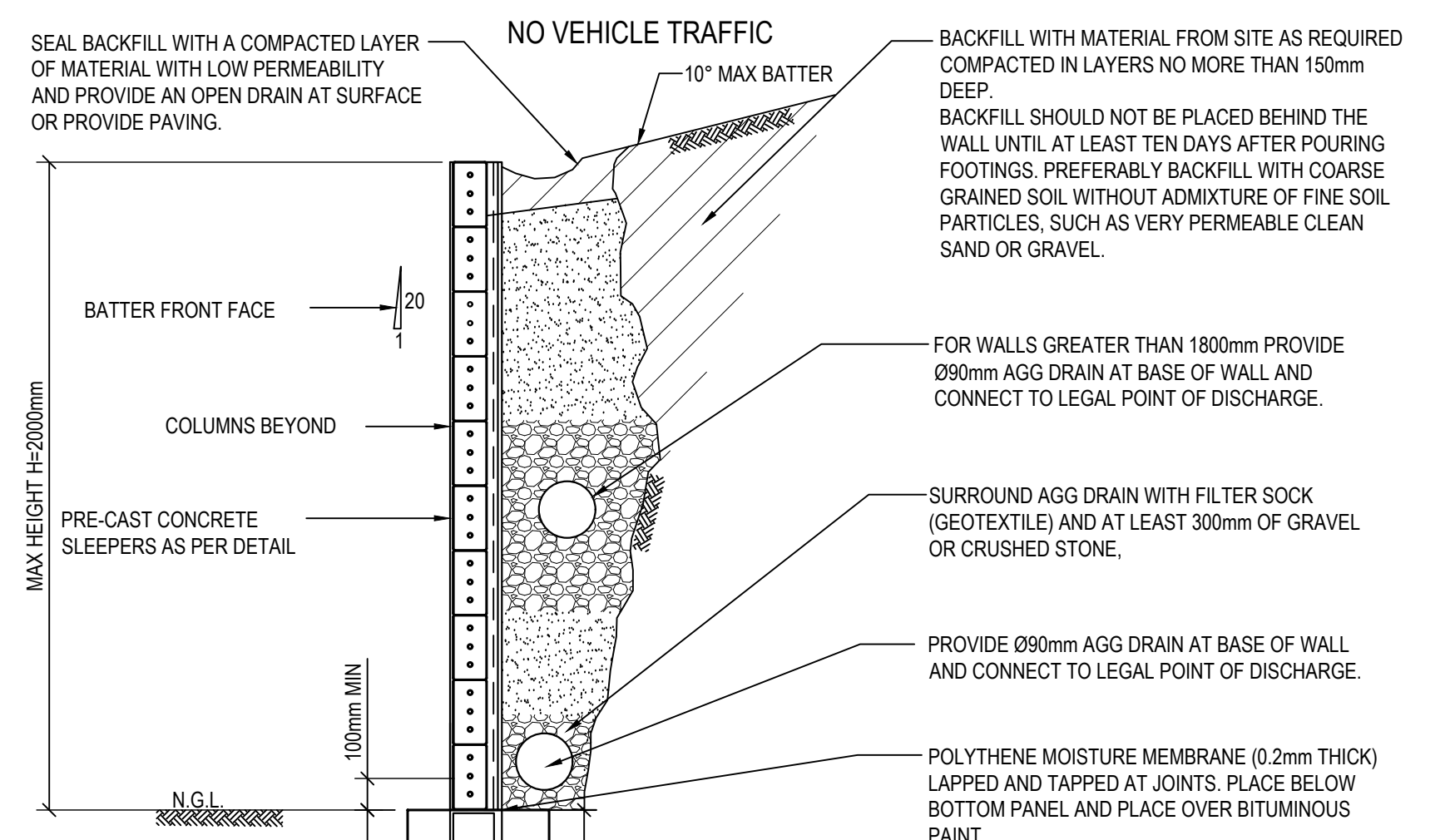
**BRICK RETAINING WALL**  
-RW1-

**RETAINING WALL SCHEDULE**

HEIGHT (H) "mm"	STIFF CLAY		ROCK		DIAMETER (d) "mm"	COLUMN SIZE (C1) "mm"
	DEPTH (D) "mm"	EMBED (E) "mm"	DEPTH (D) "mm"	EMBED (E) "mm"		
1000	1400	1200	1000	1000	450	100 UC 15
1200	1600	1400	1200	1200	450	100 UC 15
1400	1800	1600	1400	1400	450	100 UC 15
1600	2000	1800	1600	1600	450	150 UC 23
1800	2300	2000	1800	1800	450	150 UC 23
2000	2500	2200	2000	2000	450	150 UC 31



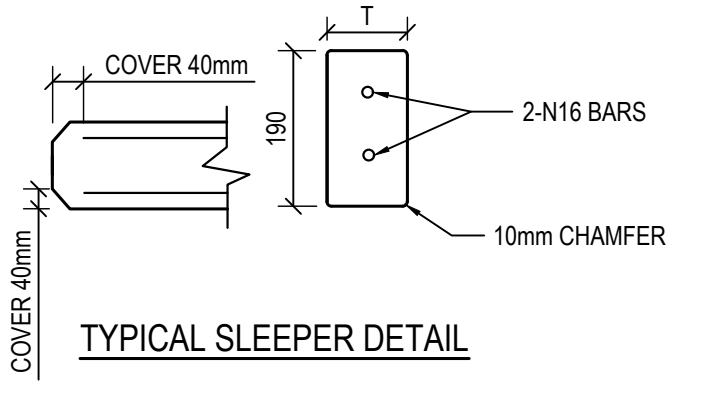
TYPICAL CONCRETE PANEL RETAINING WALL -RW2- (OPTION 2)



**CONCRETE QUALITY**

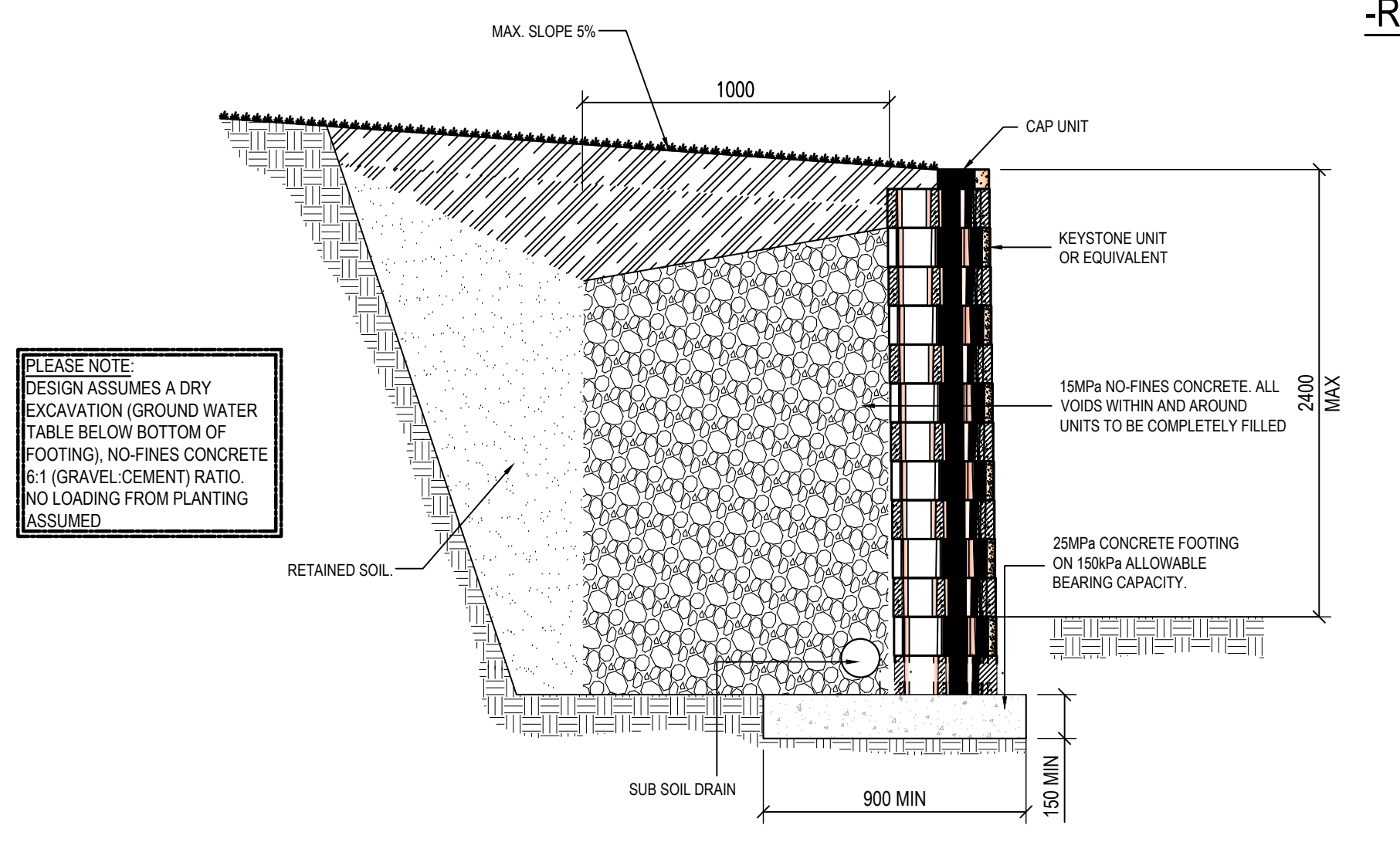
ELEMENT	SLUMP	AGGREGATE (MAX. SIZE)	CEMENT TYPE	$f_c$
PILES	120mm	20mm	A	25 MPa

THICKNESS "mm"	MAX RETAINED HEIGHT "mm"
MIN 60	1400
MIN 75	2000

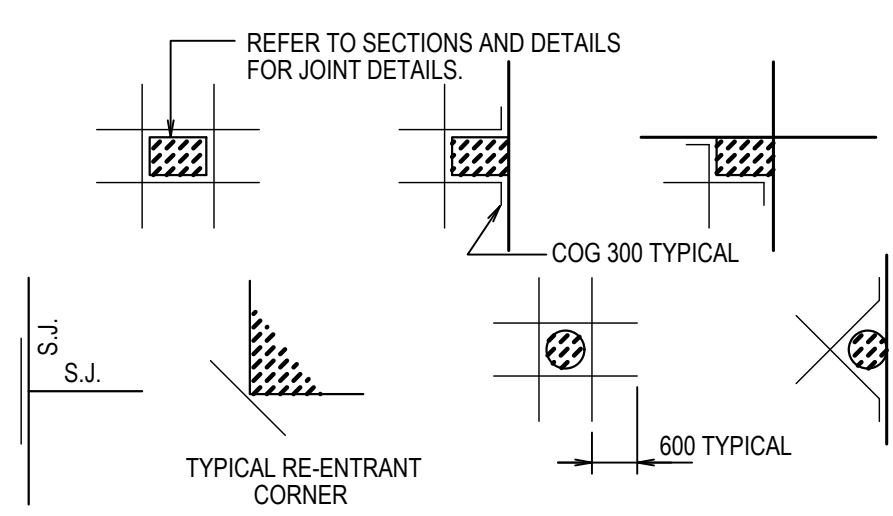


**SECTION A**  
SCALE 1:20  
STEEL POST WALL

**SECTION B**  
SCALE 1:20  
TYPICAL CONCRETE SLEEPER DETAIL



**NO-FINES CONCRETE RETAINING WALL -RW2- (OPTION 1) - 2400mm MAX HEIGHT**



SLAB ON GROUND - ALL TRIMMERS TO BE 2N12 TOP U.N.O.  
 SUSPENDED SLAB - ALL TRIMMERS TO BE 3N16 T&B U.N.O.  
**TYPICAL TRIMMER DETAILS**  
 AT ALL COLUMNS, WALLS, PITS, FLOOR WASTES, ETC THAT CAUSE A PENETRATION THROUGH THE SLAB.

REVISION	AMENDMENT	ISSUE DATE	ISSUE	ISSUED TO	ISSUE DATE
B	MINOR AMENDMENTS	05/10/2022			
A	PRELIMINARY DESIGN	21/09/2022			

**CAM CONSULTING**  
STRUCTURAL & CIVIL ENGINEERS

SUITE 303 / 29-31 LEXINGTON DRIVE  
 NORWEST BUSINESS PARK,  
 BELLA VISTA N.S.W. 2153  
 ALL CORRESPONDENCE TO:  
 P.O. BOX 6080 BAULKHAM HILLS BC  
 BAULKHAM HILLS NSW 2153  
 PH. 8814 6191 FAX 8814 5301 MOB. 0425 270 333  
 EMAIL. andrew@camconsulting.com.au

PROJECT  
**PROPOSED DEVELOPMENT**  
 LOT 9, 6 ORCHARD STREET  
 WARRIEWOOD

CLIENT  
**SKYCORP**

ARCHITECT / PROJECT MANAGER  
**PTI ARCHITECTURE**

DRAWING TITLE  
**EXTERNAL WORKS LAYOUT, SECTIONS AND DETAILS**

SCALES	DESIGNED	DRAFTED
A1 - 1:100	A.C.	M.W.

DRAWING NO.	APPROVED	REVISION
C22065-C01	A.C.	B