



Existing Conifer tree/*Cupressus* sp

Existing dense *Viburnum* hedge

Existing *Callistemon* sp small tree to 3 to 4mtr in fair condition

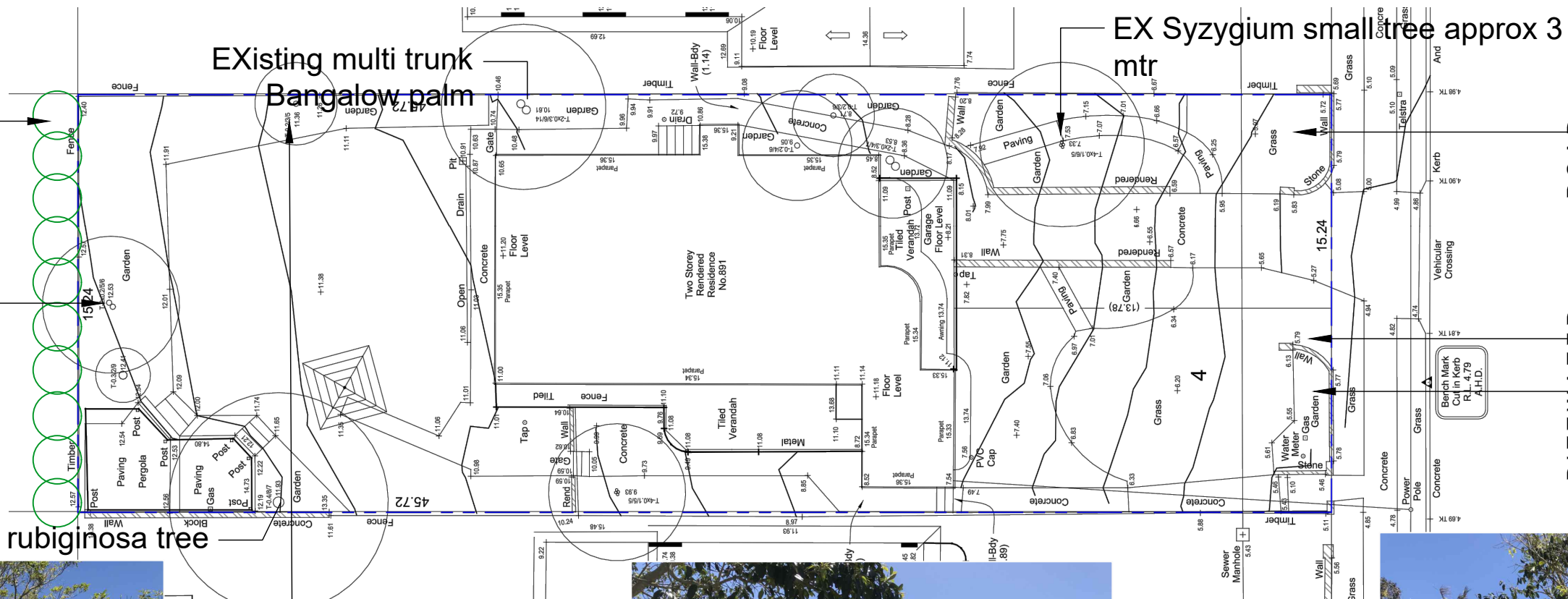
View of existing *Ficus rubiginosa* tree



Existing Small date palms *Phoenix roebelenii*, *Cordyline australis* and other mixed planting to SE boundary



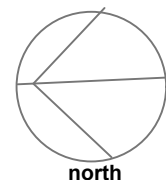
Image shows *Ficus* tree to North rear boundary



Site Analysis and Images

Landscape plan 891 Pittwater rd Collaroy

Issue: A
Issue: B



Andrew Davies
landscape designer

27 Turimetta Street, Mona Vale NSW 2103
andrewdavies@banksiadesigngroup.com.au
alm - 17 988 316 620
www.banksiadesigngroup.com.au 0414 2900 57

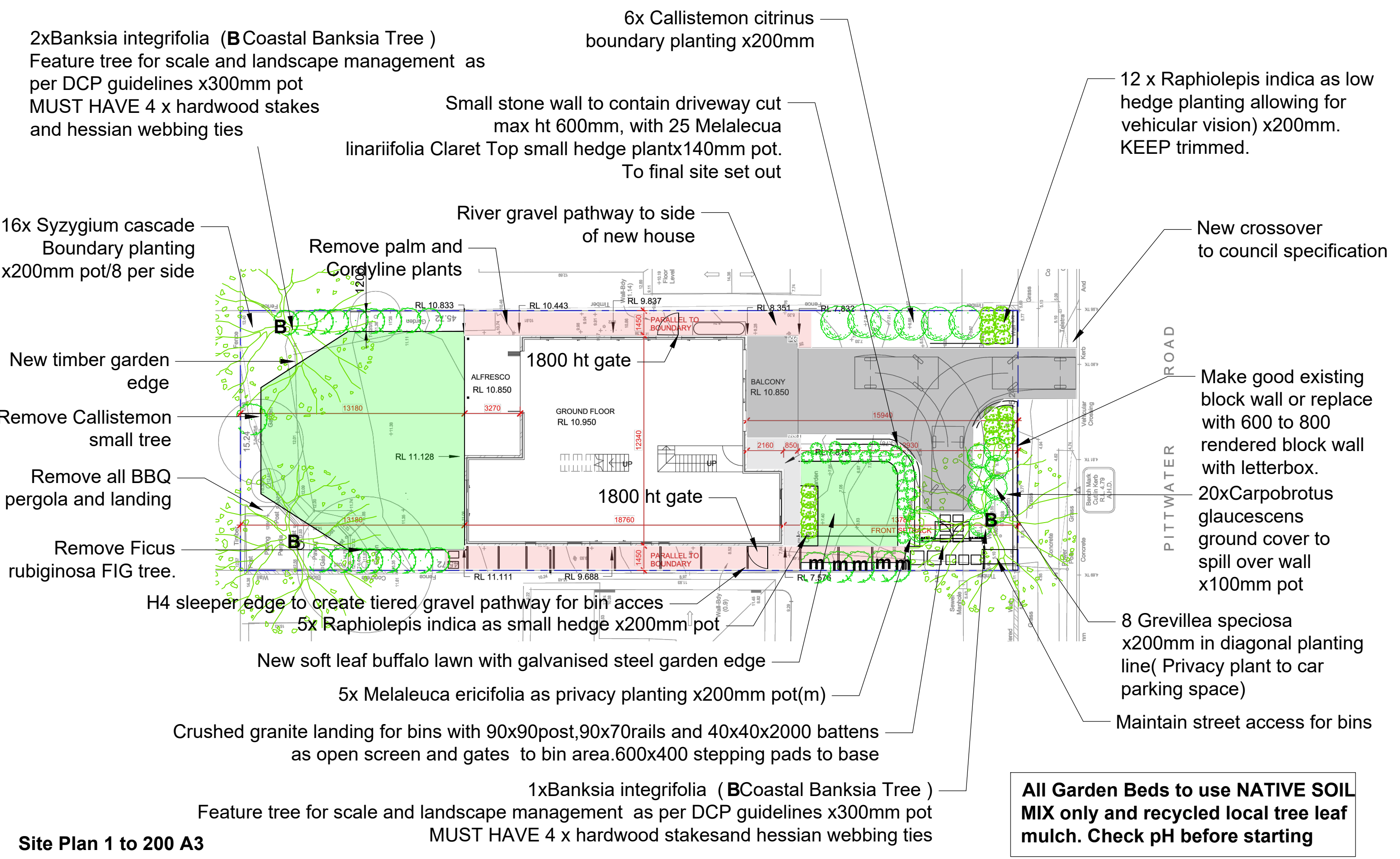


Landscape DA Plan

Drawing: AD/TT	Checked by: AD
Andrew Davies	Job: R19 221129
Date 5.12.22	Issue: B
Scale: 1:100 A3	Approx

1

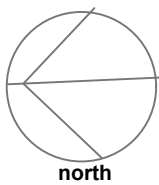
3



Site Plan 1 to 200 A3

Landscape plan
891 Pittwater rd Collaroy

Issue: A
Issue: B

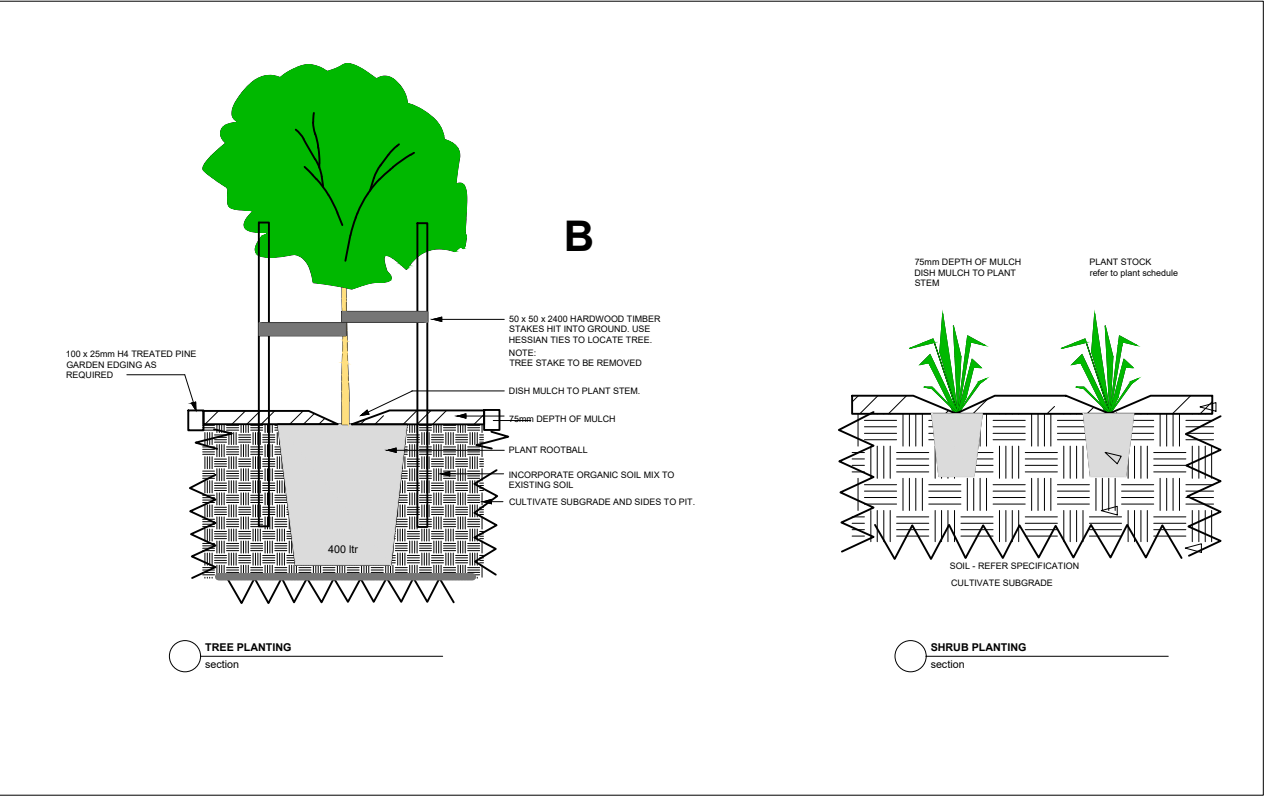


Andrew Davies
landscape designer
27 Turimetta Street, Mona Vale NSW 2103
andrewdavies@banksiadesigngroup.com.au
alm - 17 989 316 620
www.banksiadesigngroup.com.au 0414 2900 57



Landscape DA Plan		2 3
Drawing: AD/TT	Checked by: AD	
Andrew Davies	Job: R19 221129	
Date: 5.12.22	Issue: B	
Scale: 1to100 A3		
Approx:		

Botanical Name	Common Name	Pot size mm	Dimensions WxH in metres	Qty.
<i>Banksia integrifolia</i>	Coastal Banksia	300	6+x8+	3
<i>Callistemon citrinus</i>	Lemon scented Bottlebrush	200	1.5x1.5	6
<i>Carpobrotus glaucescens</i>	Native pig face	100	1.2x.4	20
<i>Grevillea speciosa</i>	Grevillea	200	1.5x1.5	8
<i>Melaleuca Claret tops</i>	Melaleuca	140	.6x.6	25
<i>Melaleuca ericifolia</i>	Melaleuca	200	2x2 keep as hedge	5
<i>Raphiolepis indica</i>	Indian hawthorn	200	1x1	13
<i>Syzygium cascade</i>	Pink flowering lillypilly	200	1.6x1.8+	16



Plant Schedule and General notes

Landscape plan
891 Pittwater rd Collaroy

Issue: A
Issue: B

LANDSCAPE GENERAL
SPECIFICATION AND NOTES

All landscape works and material supply, to be in accordance with AS 4000, LCA guidelines and Occupational Health & Safety standards.

All landscape works to comply with relevant Australian Standards and relevant Building Codes of Australia

All dimensions and locations to be checked on site and confirmed by landscape site supervisor before commencement of works

Do not scale from drawings. Dimensions take preference

Plant schedule and quantities to be used as guide only and to be confirmed by contractor before final purchase of plants

Final plant positions to be determined on site (by Landscape Supervisor).

DESIGN LIABILITY NOTE: No liability is accepted by these plans. Contractors are required to check ALL construction facts, figures and relevant information pertaining to the soft and hard scape works to be performed. Should anomalies occur, the designer or a representative of Andrew Davies/Banksia Design Group must be contacted and given due notice and sufficient documentation and, if required, due compensation to allow for adjustment/s to plans, documentation etc

REMOVAL OF NOXIOUS WEEDS: As a duty of care exists for all contractors: if a noxious weed exists onsite it should be removed after discussion with the owner or site supervisor.

ENVIRONMENTAL MANAGEMENT AND SEDIMENT CONTROL: All Landscape works to adhere with Environmental Legislation outlined in the *Protection of the environment operations act 1997*, by the EPA NSW.

It is highly recommended to use Dial Before You Dig services – contact for information at www.dialbeforeyoudig.com.au or call 1100.

TREES: All trees to be staked: use 2 x hardwood 50x50mm stakes and hessian webbing. See detail

TURF: 1. Install turf rolls diagonal to the fall of the land. Roll turf following installation, and water as required . Use soft leaf Buffalo sp

2. 50 - 70mm topsoil underlay to be used in ground preparation .Note check ph after construction and before laying turf, adjust as required for optimum plant growth

SOIL:

1. Contractor is to check soil pH levels, two weeks prior to planting, and allow for reasonable adjustments, using lime or similar to ensure plant viability

2. Break up existing ground surface using mattock, rotary hoe or tractor tine as required

3. Topsoil sandy loam 50mm depth to turf areas.

4. Where necessary mound soil to assist in soil drainage to avoid root rot and poor plant growth

5. Incorporate ¼ tonne organic soil mix into holes where trees are planted, using recycled leaf litter as mulch

6. Soil Quality to be Australian Native Landscape Standard

7. Supply and Install ‘Garden Mix’ to all garden beds incorporated into the top 300mm of existing site profile. Note use rotary hoe as required do not just place on top of ground

MULCH: Mulch to be installed to all planter beds to a depth of 75mm. Mulch type to be Recycled Leaf Litter ideally from local tree company based on more native plants than general exotics.

EDGING: See plan for locations. Top edge higher than lawn to allow garden beds to be aerated & mounded

DRAINAGE: see Hydraulic Engineer drawings

LIGHTING: to future plans TBA

MAINTENANCE: New plants to receive regular deep irrigation for a minimum 12 weeks establishment period. Seasonal pruning, fertilising and pest and disease checks to be carried out. Advice by qualified horticulturalist recommended

IRRIGATION: Drip irrigation TBA

Andrew Davies
landscape designer
27 Turimetta Street, Mona Vale NSW 2103
andrewdaves@banksiadesigngroup.com.au
alm : 17 986 316 620
www.banksiadesigngroup.com.au 0414 2900 57



Landscape DA Plan

Drawing: AD/TT	Checked by: AD
Andrew Davies	Job:R19 221129
Date 5.12.22	Issue: B
Scale:1to100 A3	
Approx	