

# WHOLEGREEN BAKERY

## Shop 7, 8-28 The Corso, Manly

# DA SUBMISSION

## 11th April , 2025

TRANSMITTAL

Issued to Client & Planner

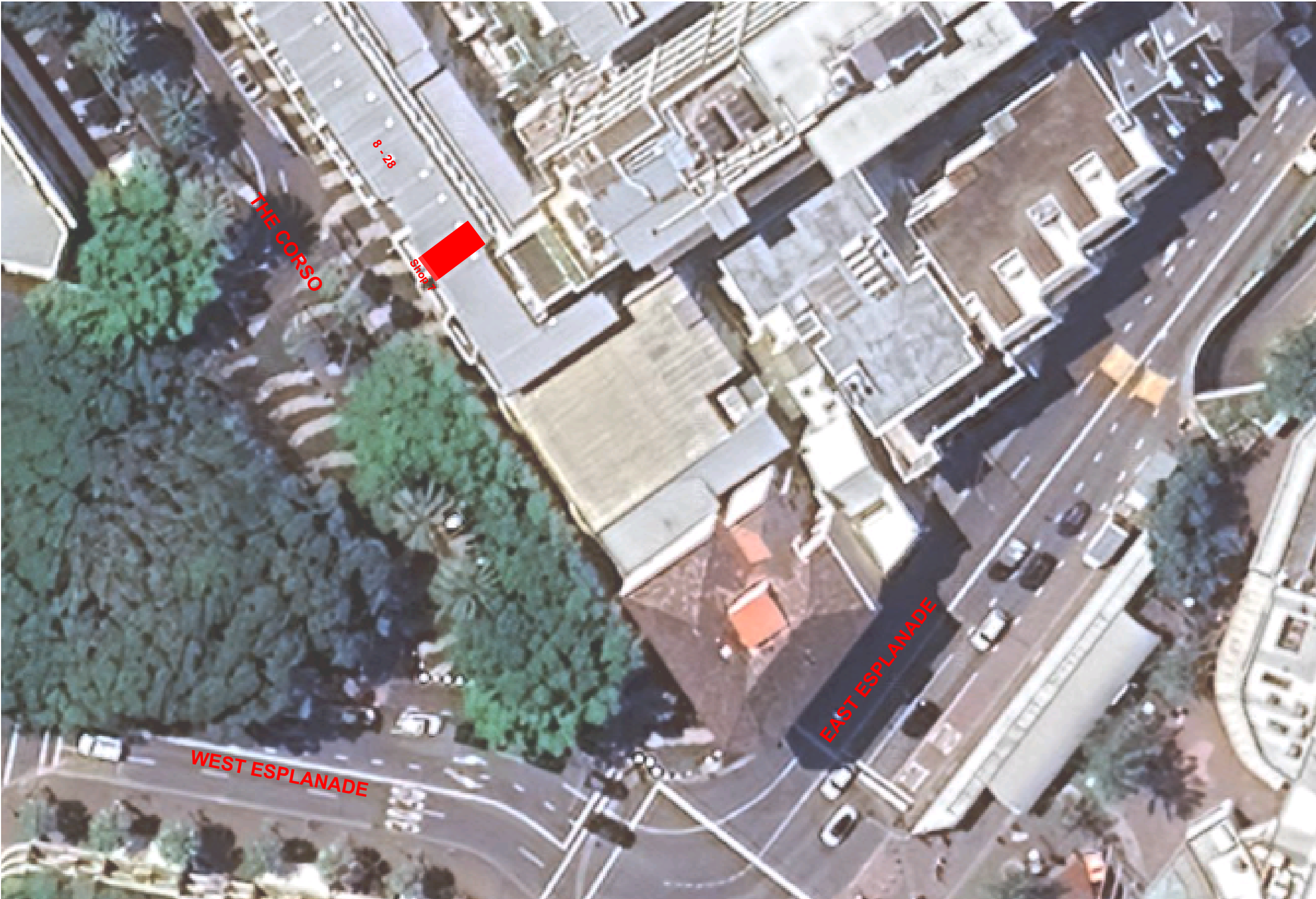
		DA	DA - Amended
DWG NO.	DWG NAME	04.04.25	11.04.25
WGB_M_001	SITE PLAN	C	D
WGB_M_002	PLAN - General Arrangement	C	D
WGB_M_003	PLAN - Equipment & Electrical	C	D
WGB_M_004	PLAN - Floor & Hydraulics	C	D
WGB_M_005	PLAN - Reflected Ceiling Plan	C	D
WGB_M_006	PLAN - Finishes	C	D
WGB_M_010	ELEVATIONS A	C	D
WGB_M_011	ELEVATIONS B	C	D
WGB_M_012	EXTERNAL ELEVATIONS C	C	D

No.	Date	Revision
A	27.03.25	Prelim Planning - For Discussion
B	01.04.25	Prelim Pre DA For Approval
C	03.04.25	DA - Not For Construction
D	09.04.25	DA - Amended Hydraulics & RCP - Not For Construction

DA SUBMISSION

Original drawing A3 size. Do not scale off this drawing. Contractors shall verify all critical dimensions on site prior to commencement of work. All work to be carried out in accordance with the BCA, Australian Standards and relevant International Countruction Standards. Reproduction of the whole or part of this document constitutes an infringement of copyright. The information ideas and concepts contained in this document are confidential. The recipient(s) of this document is prohibited from disclosing such information, ideas and concepts to any person without the prior written consent of SJS &/or DAAD.

Project	Dwg Title	Dwn	Date
WHOLEGREEN BAKERY	TITLE	SJ/MB	3/4/2025
Wholegreen Bakery Manly	Dwg No.		Rev
Shop 7 / 8-28 THE CORSO, MANLY	WGB_M_000		D



1 Site Plan

**SARAH  
JOHNSON**  
**.STUDIO**

In collaboration with

**DA+D**

email: [studio@sarahjohnson.studio](mailto:studio@sarahjohnson.studio)  
email: [studio@daad.net.au](mailto:studio@daad.net.au)

No.	Date	Revision
A	27.03.25	Prelim Planning - For Discussion
B	01.04.25	Prelim Pre DA For Approval
C	03.04.25	DA - Not For Construction
D	09.04.25	DA - Amended Hydraulics & RCP - Not For Construction

**DA SUBMISSION**

Original drawing A3 size. Do not scale off this drawing. Contractors shall verify all critical dimensions on site prior to commencement of work. All work to be carried out in accordance with the BCA, Australian Standards and relevant International Countruction Standards. Reproduction of the whole or part of this document constitutes an infringement of copyright. The information ideas and concepts contained in this document are confidential. The recipient(s) of this document is prohibited from disclosing such information, ideas and concepts to any person without the prior written consent of SJS &/or DAAD.

**Project**  
**WHOLEGREEN BAKERY**  
  
**Wholegreen Bakery Manly**  
Shop 7 / 8-28 THE CORSO, MANLY

**SITE PHOTOS**

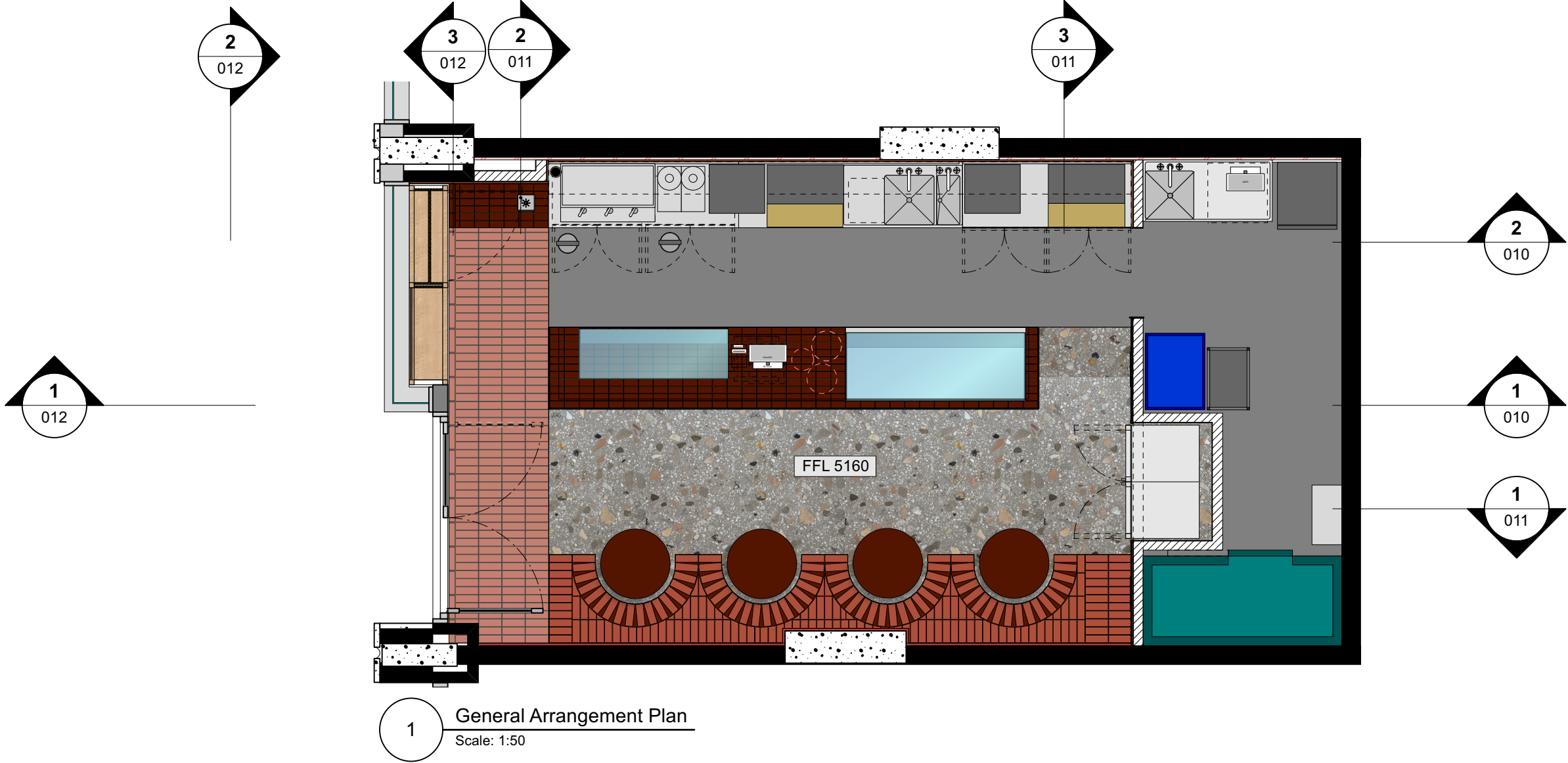


Dwg Title	Dwn	Date
SITE	SJ/MB	3/4/2025

Dwg No.	Rev
---------	-----

**WGB\_M\_001** **D**





No.	Date	Revision
A	27.03.25	Prelim Planning - For Discussion
B	01.04.25	Prelim Pre DA For Approval
C	03.04.25	DA - Not For Construction
D	09.04.25	DA - Amended Hydraulics & RCP - Not For Construction

**DA SUBMISSION**

Original drawing A3 size. Do not scale off this drawing. Contractors shall verify all critical dimensions on site prior to commencement of work. All work to be carried out in accordance with the BCA, Australian Standards and relevant International Countruction Standards. Reproduction of the whole or part of this document constitutes an infringement of copyright. The information ideas and concepts contained in this document are confidential. The recipient(s) of this document is prohibited from disclosing such information, ideas and concepts to any person without the prior written consent of SJS &/or DAAD.

**Project**  
**WHOLEGREEN BAKERY**  
**Wholegreen Bakery Manly**  
Shop 7 / 8-28 THE CORSO, MANLY

Dwg Title	Dwn	Date
PLAN - General Arrangement	SJ/MB	3/4/2025
Dwg No.	Rev	
<b>WGB_M_002</b>	<b>D</b>	

No.	Date	Revision
A	27.03.25	Prelim Planning - For Discussion
B	01.04.25	Prelim Pre DA For Approval
C	03.04.25	DA - Not For Construction
D	09.04.25	DA - Amended Hydraulics & RCP - Not For Construction

## DA SUBMISSION



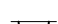




Original drawing A3 size. Do not scale off this drawing. Contractors shall verify all critical dimensions on site prior to commencement of work. All work to be carried out in accordance with the BCA, Australian Standards and relevant International Countruction Standards. Reproduction of the whole or part of this document constitutes an infringement of copyright. The information ideas and concepts contained in this document are confidential. The recipient(s) of this document is prohibited from disclosing such information, ideas and concepts to any person without the prior written consent of SJS &/or DAAD.

**Project**  
**WHOLEGREEN BAKERY**  
**Wholegreen Bakery Manly**  
Shop 7 / 8-28 THE CORSO, MANLY

<b>Dwg Title</b>	<b>Dwn</b>	<b>Date</b>
PLAN - Equipment & Electrical	SJ/MB	3/4/2025

<b>Dwg No.</b>	<b>Rev</b>
<b>WGB_M_003</b>	<b>D</b>

### ELECTRICAL & COMMS LEGEND

-  THREE PHASE POWER HARWIRED APPLIANCE
-  SINGLE PHASE 10 AMP HARDWIRED APPLIANCE
-  MAJOR APPLIANCE - FRIDGE/DISHWASHER
-  DOUBLE GPO 10 AMP
-  MODEM
-  UNDERBENCH MINI LED STRIP LIGHTING WITH ACRYLIC DIFFUSER COVER.
-  ELECTRICAL DISTRIBUTION BOARD - A THREE-PHASE 100A POWER SUPPLY WILL BE PROVIDED TO A 36POLE DISTRIBUTION BOARD BY LESSEE.

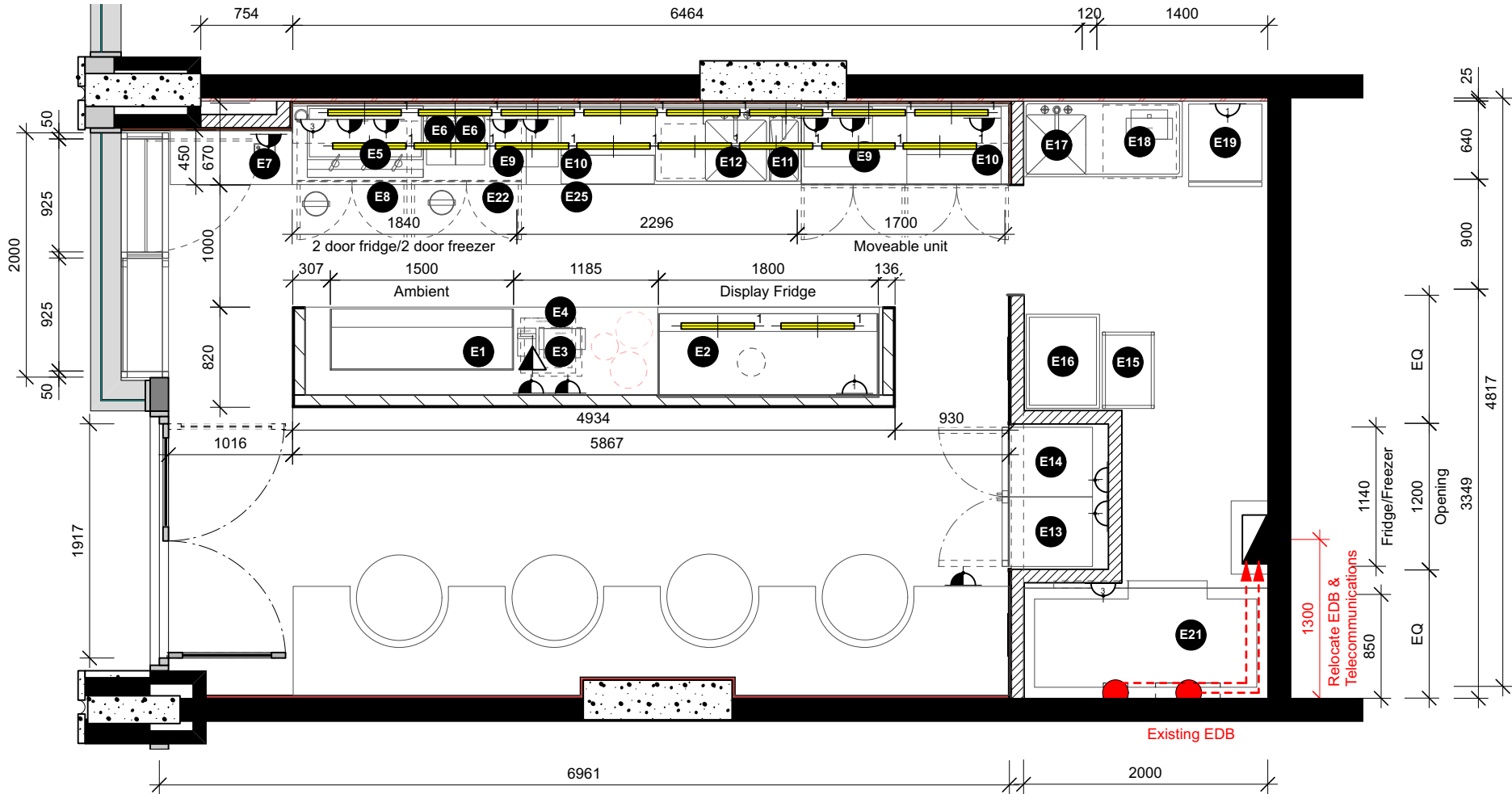
### EQUIPMENT

- E1** Ambient Glass Display 1500W
- E2** Refrigerated Glass Display - Polar U-Series Deli Display Fridge 485L 1200H x 1800W x 680D
- E3** POS - Touchpad/square/fttpos/docket printer/server
- E4** Cashdrawer
- E5** La Marzocco Coffee machine 3 group
- E6** Coffee Grinder - 2 x Knock Box
- E7** Milk Jug Rinser - Sunmixer Counter Top Model T9860-B 175(W) x 165(D) x 111(H) mm
- E8** Milkfridge - Polar G-Series Back Bar Cooler with Hinged Doors 198Ltr 850H x 900W x 520D
- E9** Sandwich Press - Roband GSA801A 560W x 490D x 228H
- E10** Plewarmer - Roband PA100 PMB 100L 772W x 392D x 587H
- E11** Handwash station with paper towel and soap dispenser.
- E12** Stainless steel prep bench with integrated sink, integrated bin cupboard below.
- E13** Freezer - to match Skope SKT500N - A Glass Door Display Stainless Steel 570W x 745D x 2200mmH
- E14** Fridge - Skope SKT500N - A Glass Door Display Stainless Steel 570W x 745D x 2200mmH
- E15** Gastronorm Trolley
- E16** Palette Trolley
- E17** Stainless steel pre bench with integrated sink
- E18** Underbench Dishwasher - SMEG Specialine SPD516AU 600W x 675D x 822H
- E19** SMEG Specialine SPD516AU Multi purpose underbench dishwasher 600W x 675D x 822H
- E21** Coolroom
- E22** Underbench two door Freezer
- E23** Pickup/Servery/Trolley
- E25** Ice Machine

### NOTES

THIS DRAWING CONTAINS COLOUR INFORMATION. CHECK ALL DIMENSIONS ON SITE.

ELECTRICIANS TO SUBMIT CERTIFICATE OF COMPLIANCE FOR ELECTRICAL WORK. ALL WORK MUST COMPLY WITH AS3000-2018 AND PART J6 OF BCA 2019 AMENDMENT 1. ELECTRICIANS TO CHECK EQUIPMENT LIST WITH EXISTING EDB POWER ALLOWANCE.



## Equipment & Electrical Plan

Scale: 1:50

No.	Date	Revision
A	27.03.25	Prelim Planning - For Discussion
B	01.04.25	Prelim Pre DA For Approval
C	03.04.25	DA - Not For Construction
D	09.04.25	DA - Amended Hydraulics & RCP - Not For Construction

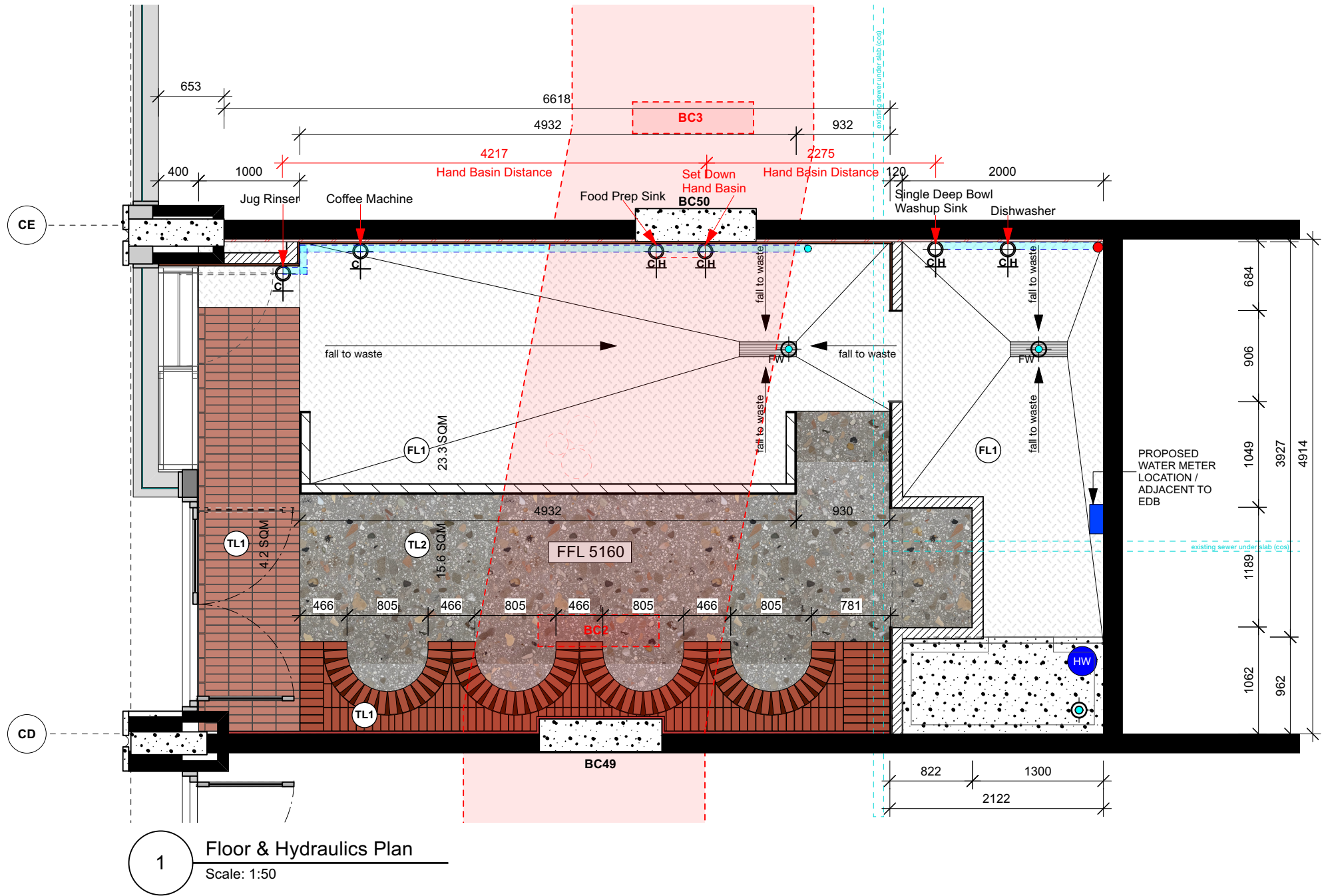
## DA SUBMISSION

Original drawing A3 size. Do not scale off this drawing. Contractors shall verify all critical dimensions on site prior to commencement of work. All work to be carried out in accordance with the BCA, Australian Standards and relevant International Countruction Standards. Reproduction of the whole or part of this document constitutes an infringement of copyright. The information ideas and concepts contained in this document are confidential. The recipient(s) of this document is prohibited from disclosing such information, ideas and concepts to any person without the prior written consent of SJS &/or DAAD.

**Project**  
**WHOLEGREEN BAKERY**  
**Wholegreen Bakery Manly**  
Shop 7 / 8-28 THE CORSO, MANLY

<b>Dwg Title</b>	<b>Dwn</b>	<b>Date</b>
PLAN - Floor & Hydraulics	SJ/MB	3/4/2025

<b>Dwg No.</b>	<b>Rev</b>
<b>WGB_M_004</b>	<b>D</b>



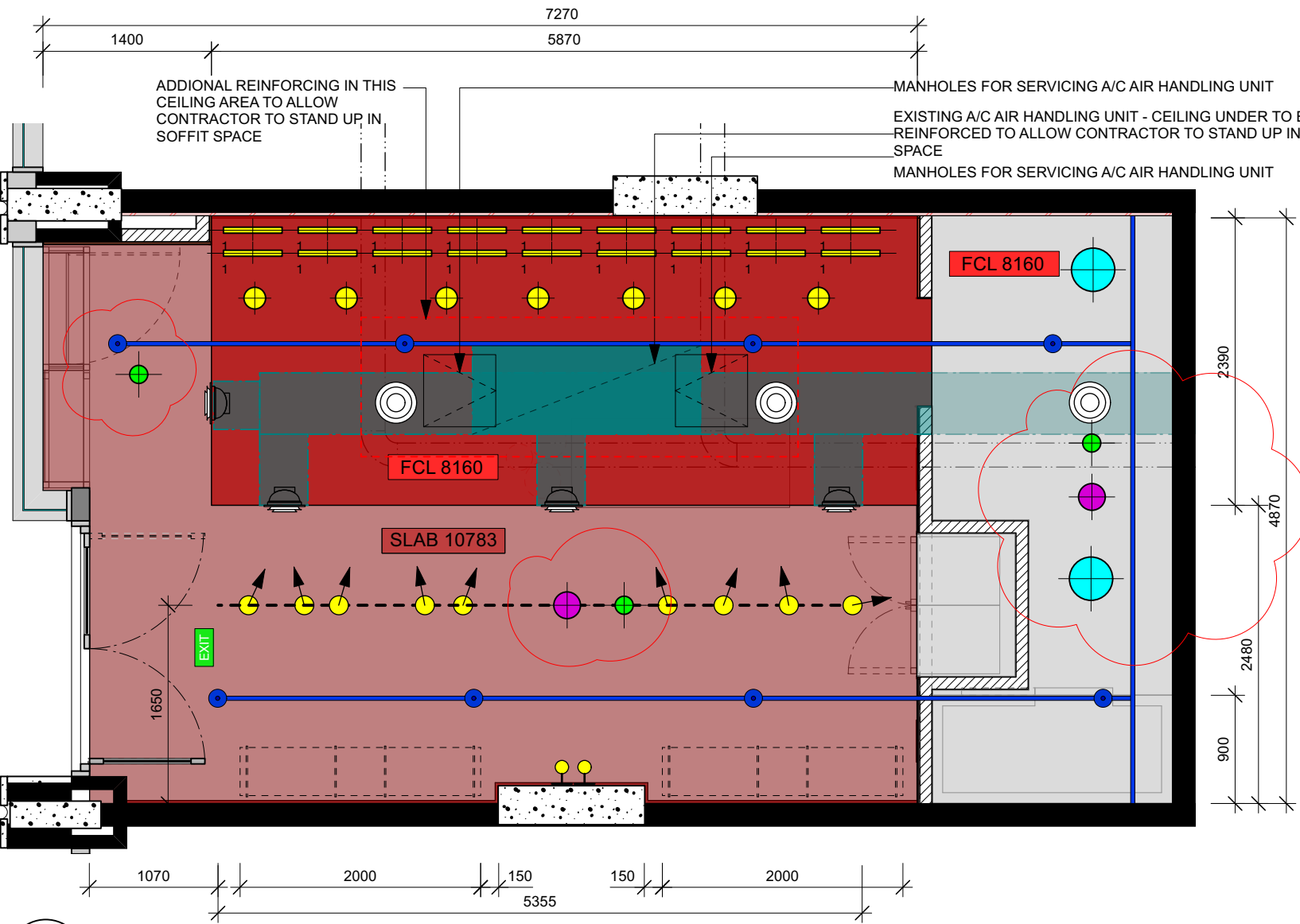
- LEGEND**
- 75MM CONCRETE PLINTH FOR COOLROOM
  - FL1 - COMMERCIAL KITCHEN NON SLIP SAFETY FLOOR FINISH - (R11) P4 NON-SLIP RATING - PLEASE ALLOW FOR WATERPROOFING UNDER.
  - TL1 - TILED FLOOR BAND & BENCH SEAT - (R10) P3 NON-SLIP RATING
  - TL2 - MAIN FLOOR FINISH - (R10) P3 NON-SLIP RATING
  - FULL HEIGHT SOLID WALL CONSTRUCTION
  - TILE CLADDING
  - LOW HEIGHT SOLID WALL CONSTRUCTION
  - WF3 - COOLROOM - CONSTRUCTED FROM 90M THK COOLROOM PANNELLING WITH SLIDING ACCESS DOOR

- HYDRAULICS LEGEND**
- FW FLOOR WASTE
  - WASTE LOCATION POINT
  - C COLD WATER EXIT POINT THROUGH WALL OR FLOOR
  - CH COLD AND HOT WATER EXIT POINT THROUGH WALL OR FLOOR
  - NEW TUNDISH LOCATION POINT FOR COOLROOM
  - GAS ISOLATOR / CONNECTION POINT
  - STAINLESS STEEL FLOOR DRAIN
  - NO PENETRATIONS IN THIS AREA - BEAMS AND COLUMNS BELOW SLAB
  - EXISTING PENETRATIONS - CONTRACTOR TO USE WHERE POSSIBLE
  - PROPOSED SLAB PENETRATIONS - ALL PENETRATIONS MUST BE FIRE RATED. APPROXIMATE LOCATION CHECK ON SITE.
  - PROPOSED PLUMBING TO CONNECT ALL WASTE POINTS BEHIND STAINLESS STEEL JOINERY.
  - EXISTING PLUMBING UNDER SLAB - APPROXIMATE LOCATION CHECK ON SITE.
  - HW HOT WATER HEATER - PROPOSED LOCATION

- NOTES**
- THIS DRAWING CONTAINS COLOUR INFORMATION. CHECK ALL DIMENSIONS ON SITE.
- CONTRACTOR TO ENSURE FLOOR FINISH COMPLIES WITH THE NATIONAL CONSTRUCTION CODE (NCC) - BUILDING CODE OF AUSTRALIA (BCA) VOL. 1, CLAUSE D2.10 & AS 4586:2013 SLIP RESISTANCE CLASSIFICATION.
- HYDRAULIC NOTES**  
**WATER SUPPLY TO HAVE WATER METER ADDED.**  
ALL PENETRATIONS TO HAVE FIRE COLLARS AND BE FIRE RATED. FLOOD STOP VALVE IS REQUIRED TO BE PROVIDED FOR ALL GLASS/DISHWASHERS. WATER SUPPLY FROM APPLIANCES TO HAVE BACKFLOW PROTECTION.
- TUNDISHES ARE TO BE PROVIDED AS NEEDED AND COORDINATED WITH HYDRAULICS/PLUMBING TRADE. PIPE MATERIALS ARE TO BE MATCHED WITH THE BASE BUILD OR AS3500. IF NOT COMPLIANT, ALL PIPEWORK IS REQUIRED TO BE LABELLED. ALL WORKS TO BE IN ACCORDANCE WITH AS3500.

- FLOORING NOTES**  
ALL FLOOR FINISHES IN FOH & BOH AREAS TO COMPLY WITH AS1428.1:2009.  
ALL FOOD PREPARATION AREAS TO COMPLY WITH THE FOOD PREMISES DESIGN CODE AS4674-2004 INCLUDING COVING.  
ALL EQUIPMENT TO BE MANUFACTURED WITH ADJUSTABLE LEGS WITH 150MM CLEARANCE UNDER FOR CLEANING OR LOCKABLE CASTORS.





1 Reflected Ceiling Plan  
Scale: 1:50

RCP LEGEND

- PT3 - NEW FLAT PLASTERBOARD CEILING  
FCL 2910MM TO BACK OF HOUSE FOOD PREPARATION AREA - COLOUR TBA
- PT1 - NEW PAINTED FCL 2910MM CEILING AND UPTURNED BULKHEAD
- PT1 - EXISTING EXPOSED SLAB AND SERVICES PAINTED COLOUR TBA
- BULKHEAD DIFFUSER - PAINTED TO MATCH NEW PLASTERBOARD CEILING COLOUR TBA
- CEILING DIFFUSER - PAINTED TO MATCH NEW PLASTERBOARD CEILING COLOUR TBA
- NEW A/C DUCTING - INDICATIVE ONLY, SERVICES ENGINEER TO CONFIRM
- UNDERBENCH MINI LED STRIP LIGHTING WITH ACRYLIC DIFFUSER COVER.
- CEILING MOUNTED CIRCULAR LED LIGHT FOR BOH AREA
- WALL LIGHT 1
- WALL LIGHT 2
- WHITE SUSPENDED UNIVERSAL LIGHTING TRACK - REFER TO SPEC
- WHITE SPOT LIGHT TO SUIT TRACK - REFER TO SPEC
- BLACK RECESSED DOWN LIGHT IP40 - FOOD SAFE
- SWITCHING ON COUNTER WALL 1100MM FROM FFL.
- EXIT SIGN
- EMERGENCY LIGHT
- HEAT/SMOKE DETECTORS AS REQUIRED
- EXISTING SPRINKLERS - INDICATIVE ONLY, MUST BE CHECKED ON SITE.
- EXISTING WASTE PLUMBING PIPES - INDICATIVE ONLY, MUST BE CHECKED ON SITE

NOTES

- THIS DRAWING CONTAINS COLOUR INFORMATION. CHECK ALL DIMENSIONS ON SITE.
- ENSURE FITOUT DESIGN COMPLIES WITH FITOUT GUIDELINE LISTED IN THE TENANT INFORMATION MANUAL INCLUDING GREEN STAR AND HERITAGE REQUIREMENTS WHERE APPLICABLE.
- ALL SLAB PENETRATIONS TO HAVE FIRE COLLARS AND BE FIRE RATED.
- HEAT DETECTORS TO BE PROVIDED INSTEAD OF SMOKE DETECTORS IN FOOD PREP/BACK OF HOUSE AREA.
- ELECTRICAL DRAWINGS COMPLY WITH AS3000-2018 AND PART J6 OF BCA 2019 AMENDMENT 1.
- EXIST SIGNS COMPLIES WITH BCA CLAUSE 4.4
- CONTRACTOR MUST ENSURE THAT ALL MATERIALS COMPLY WITH THE FIRE RESISTANCE REQUIREMENTS OF THE NATIONAL CONSTRUCTION CODE (NCC) BUILDING CODE OF AUSTRALIA (BCA) VOL. 1, SPECIFICATION C1.8/C1.10, AND THE RELEVANT AUSTRALIAN STANDARDS, INCLUDING AS 1530.4 (FIRE RESISTANCE TESTS) AND AS/NZS 3837 (METHOD OF TEST FOR HEAT AND SMOKE RELEASE). CERTIFICATION OF COMPLIANCE MUST BE PROVIDED PRIOR TO INSTALLATION.

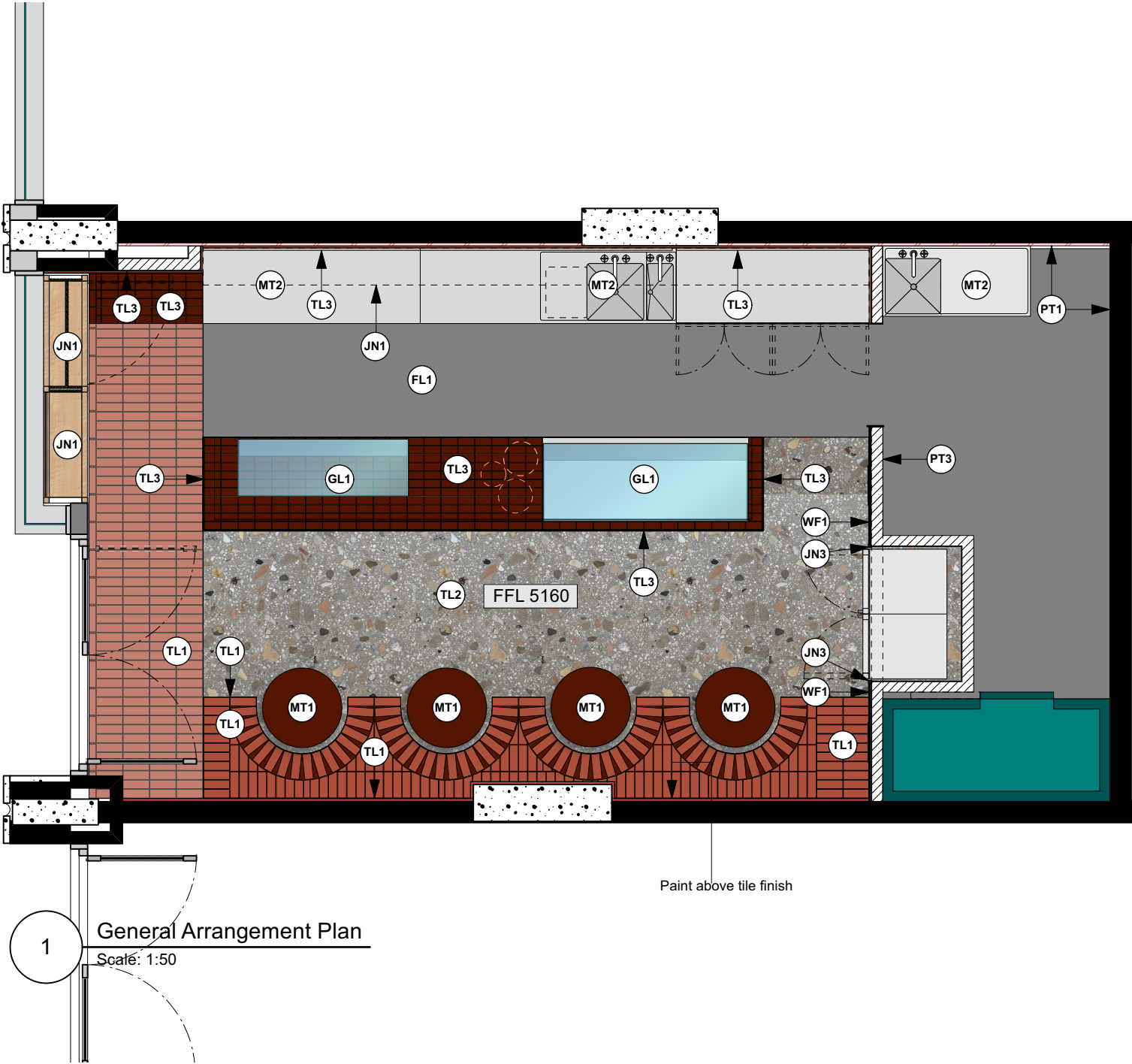
No.	Date	Revision
A	27.03.25	Prelim Planning - For Discussion
B	01.04.25	Prelim Pre DA For Approval
C	03.04.25	DA - Not For Construction
D	09.04.25	DA - Amended Hydraulics & RCP - Not For Construction

DA SUBMISSION

Original drawing A3 size. Do not scale off this drawing. Contractors shall verify all critical dimensions on site prior to commencement of work. All work to be carried out in accordance with the BCA, Australian Standards and relevant International Construction Standards. Reproduction of the whole or part of this document constitutes an infringement of copyright. The information ideas and concepts contained in this document are confidential. The recipient(s) of this document is prohibited from disclosing such information, ideas and concepts to any person without the prior written consent of SJS &/or DAAD.

Project  
**WHOLEGREEN BAKERY**  
  
Wholegreen Bakery Manly  
Shop 7 / 8-28 THE CORSO, MANLY

Dwg Title	Dwn	Date
PLAN - RCP	SJ/MB	3/4/2025
Dwg No.	Rev	
<b>WGB_M_005</b>	<b>D</b>	



#### TILE & FLOOR FINISHES

- TL1** Terracotta floor and seat tile
- TL2** Grey Terrazzo Tile
- TL3** Glazed Chocolate Tile  
Counter and Merchandise display
- TL4** BOH White Square Tile
- FL1** Back of House Non-Slip Safety Floor

#### WALL FINISHES

- PT1** Paint 01 - Reddy Brown - Low Sheen
- PT2** Paint 02 - Reddy Brown - Matt
- PT3** Paint 03 - Light Grey BOH LS
- PT4** Paint 04 - Reddy Brown - High Gloss
- WF1** Wall Finish - Cork 6mm & 12mm
- WF2** Wall Finish - BOH
- WF3** Wall Finish - Coolroom Panelling

#### JOINERY & EQUIPMENT FINISHES

- JN1** Joinery finish 01 - Oak Veneered Finish
- JN2** Joinery finish 02 - 35mm thk Oak Dowel
- JN3** Joinery finish 03 - 18mm thk HMR base board with  
matt two pack polyurethane finish to match Reddy  
Brown specified.
- MT1** Metal finish 01 - Powdercoated Reddy Brown 3-9mm  
thk Aluminium as specified
- MT2** Stainless steel - 316 Food Grade Stainless Steel for all  
custom benches, framing and cupboards.
- MT3** 3-6mm thk Brass flatbar/angle to cap tile edge / floor  
transition strip
- GL1** 6mm thk Toughened Frameless Glass with Polished  
and Arrissed Edges.

#### FURNITURE - Supplied by Client

- F01** Outdoor Stool
- F02** Internal Stool
- F03** Internal Chair
- F04** Exterior and Interior Circular  
Powdercoated Table
- F05** Rectangular Table
- F06** Communal Table

**SARAH  
JOHNSON**  
**.STUDIO**

In collaboration with

**DA+D**

email: [studio@sarahjohnson.studio](mailto:studio@sarahjohnson.studio)  
email: [studio@daad.net.au](mailto:studio@daad.net.au)

No.	Date	Revision
A	27.03.25	Prelim Planning - For Discussion
B	01.04.25	Prelim Pre DA For Approval
C	03.04.25	DA - Not For Construction
D	09.04.25	DA - Amended Hydraulics & RCP - Not For Construction

#### DA SUBMISSION

Original drawing A3 size. Do not scale off this drawing. Contractors shall verify all critical dimensions on site prior to commencement of work. All work to be carried out in accordance with the BCA, Australian Standards and relevant International Countruction Standards. Reproduction of the whole or part of this document constitutes an infringement of copyright. The information ideas and concepts contained in this document are confidential. The recipient(s) of this document is prohibited from disclosing such information, ideas and concepts to any person without the prior written consent of SJS &/or DAAD.

**Project**  
**WHOLEGREEN BAKERY**

**Wholegreen Bakery Manly**  
Shop 7 / 8-28 THE CORSO, MANLY

**Dwg Title**  
PLAN - Finishes

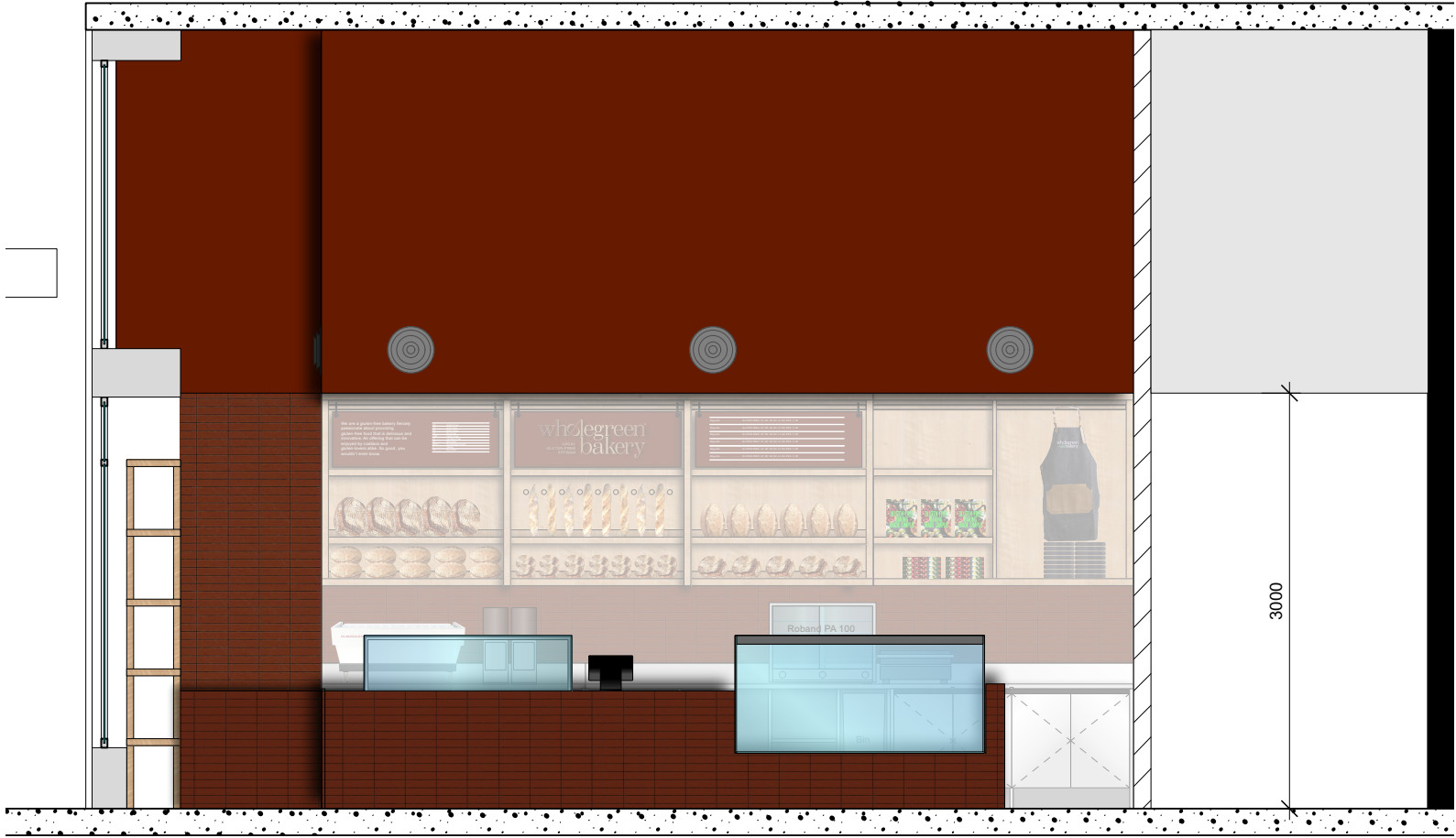
**Dwn**  
SJ/MB

**Date**  
3/4/2025

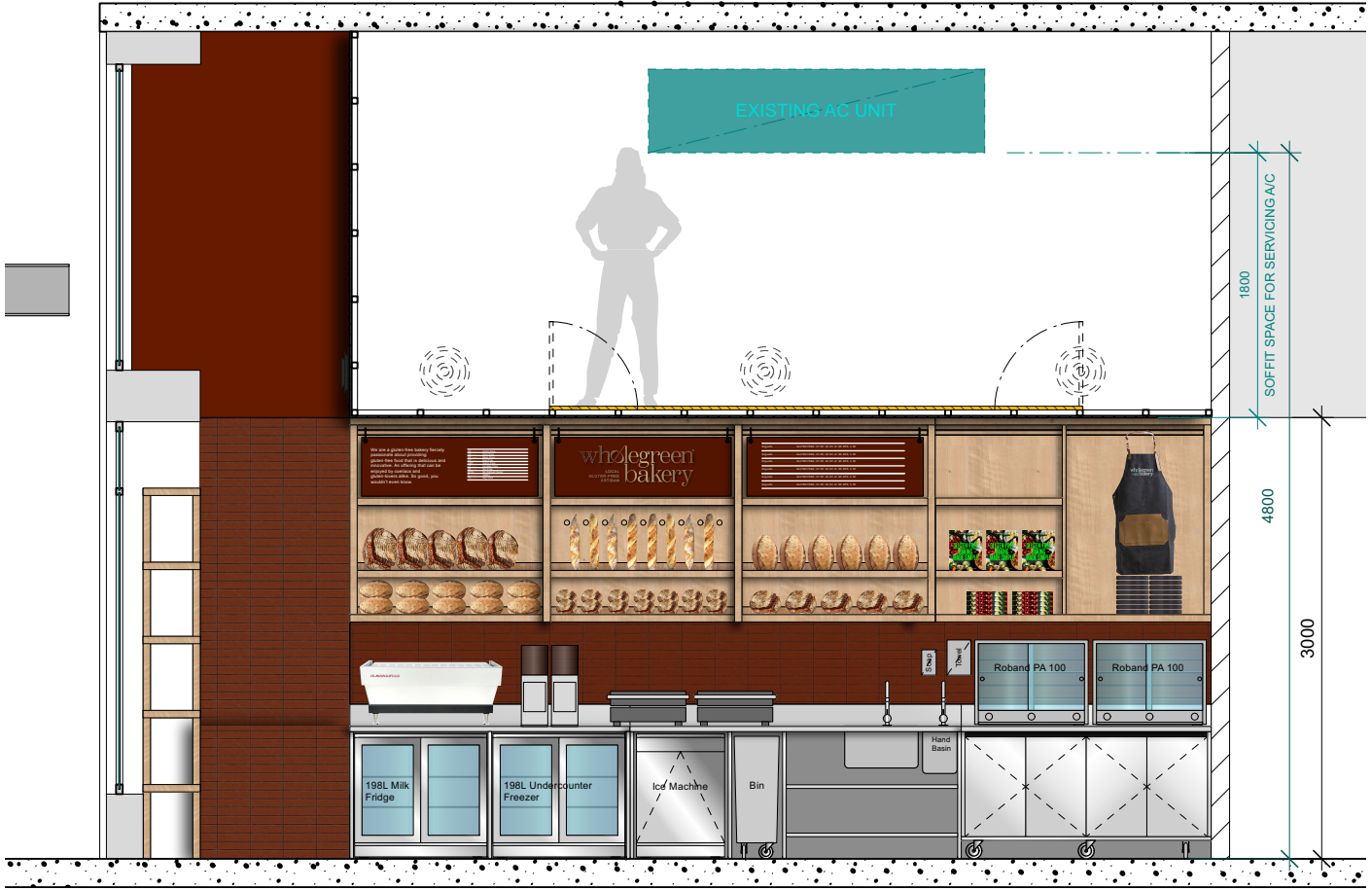
**Dwg No.**  
**WGB\_M\_006**

**Rev**

**D**



1 ELEVATION  
Scale: 1:50



2 ELEVATION  
Scale: 1:50

**SARAH  
JOHNSON**  
**.STUDIO**

In collaboration with

**DA+D**

email: [studio@sarahjohnson.studio](mailto:studio@sarahjohnson.studio)  
email: [studio@daad.net.au](mailto:studio@daad.net.au)

No.	Date	Revision
A	27.03.25	Prelim Planning - For Discussion
B	01.04.25	Prelim Pre DA For Approval
C	03.04.25	DA - Not For Construction
D	09.04.25	DA - Amended Hydraulics & RCP - Not For Construction

## DA SUBMISSION

Original drawing A3 size. Do not scale off this drawing. Contractors shall verify all critical dimensions on site prior to commencement of work. All work to be carried out in accordance with the BCA, Australian Standards and relevant International Construction Standards. Reproduction of the whole or part of this document constitutes an infringement of copyright. The information ideas and concepts contained in this document are confidential. The recipient(s) of this document is prohibited from disclosing such information, ideas and concepts to any person without the prior written consent of SJS &/or DAAD.

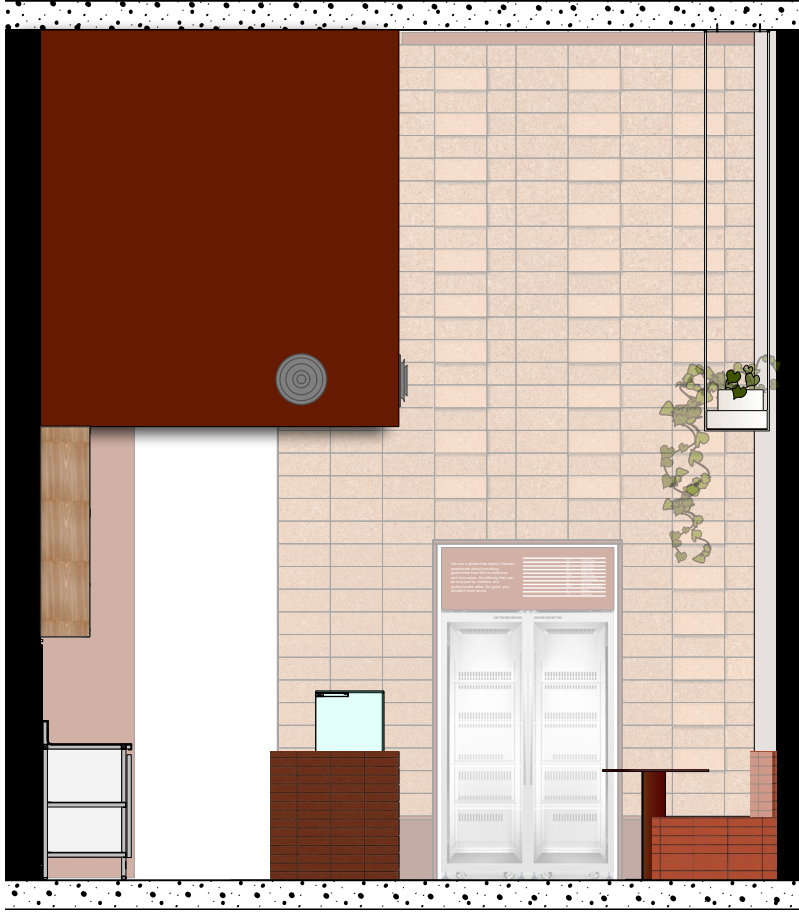
**Project**  
**WHOLEGREEN BAKERY**  
**Wholegreen Bakery Manly**  
Shop 7 / 8-28 THE CORSO, MANLY

<b>Dwg Title</b> ELEVATIONS - A	<b>Dwn</b> SJ/MB	<b>Date</b> 16.02.25
<b>Dwg No.</b> <b>WGB_M_010</b>	<b>Rev</b> <b>D</b>	

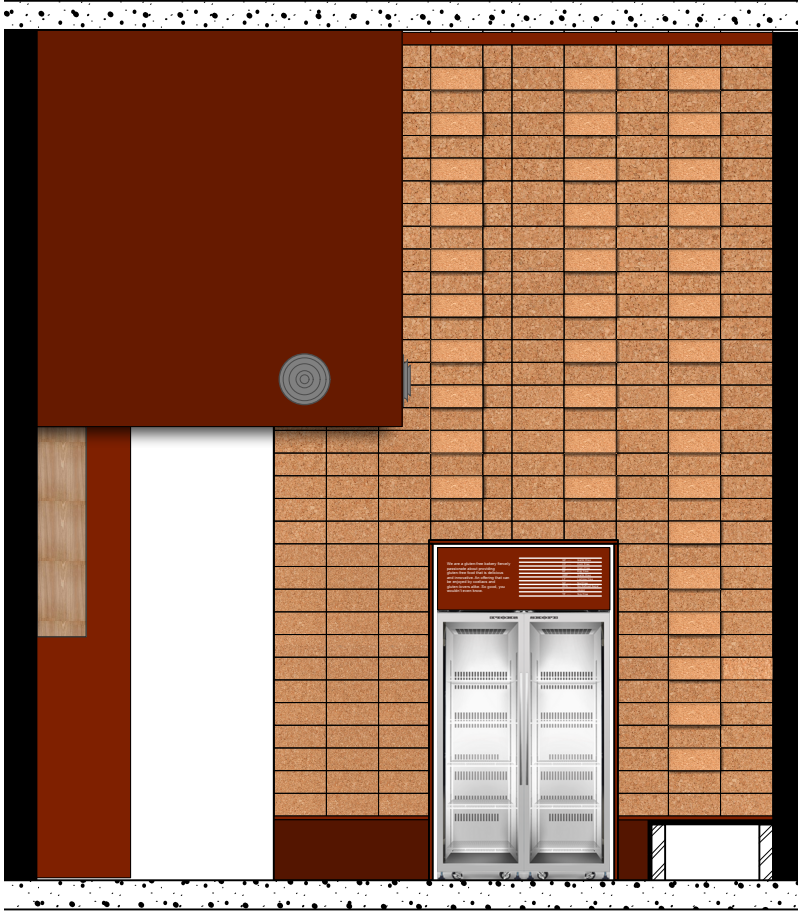




1 ELEVATION  
Scale: 1:50



2 ELEVATION  
Scale: 1:50



3 ELEVATION  
Scale: 1:50

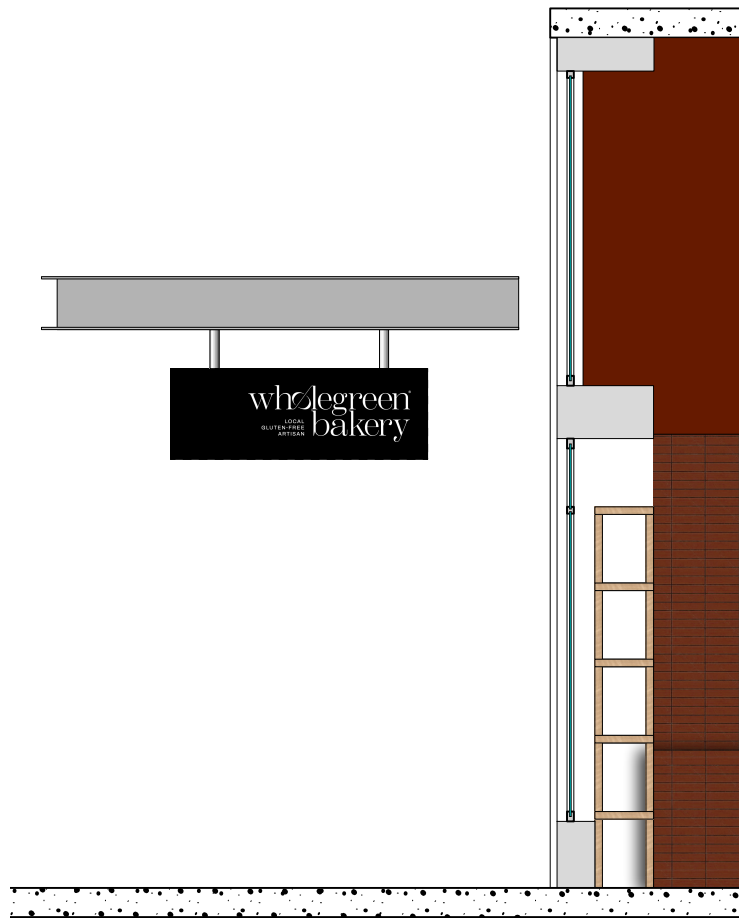
No.	Date	Revision
A	27.03.25	Prelim Planning - For Discussion
B	01.04.25	Prelim Pre DA For Approval
C	03.04.25	DA - Not For Construction
D	09.04.25	DA - Amended Hydraulics & RCP - Not For Construction

## DA SUBMISSION

Original drawing A3 size. Do not scale off this drawing. Contractors shall verify all critical dimensions on site prior to commencement of work. All work to be carried out in accordance with the BCA, Australian Standards and relevant International Countruction Standards. Reproduction of the whole or part of this document constitutes an infringement of copyright. The information ideas and concepts contained in this document are confidential. The recipient(s) of this document is prohibited from disclosing such information, ideas and concepts to any person without the prior written consent of SJS &/or DAAD.

**Project**  
**WHOLEGREEN BAKERY**  
**Wholegreen Bakery Manly**  
Shop 7 / 8-28 THE CORSO, MANLY

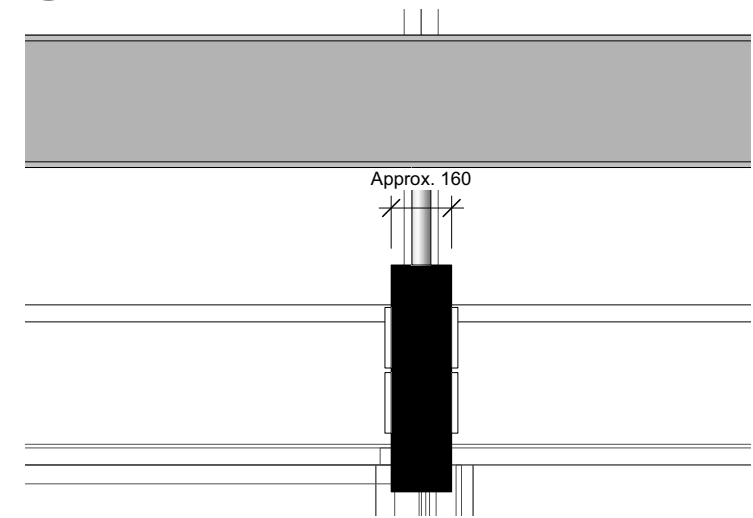
Dwg Title	Dwn	Date
ELEVATIONS - B	SJ/MB	16.02.25
Dwg No.	Rev	
<b>WGB_M_011</b>	<b>D</b>	



1 SIGNAGE ELEVATION  
Scale: 1:50



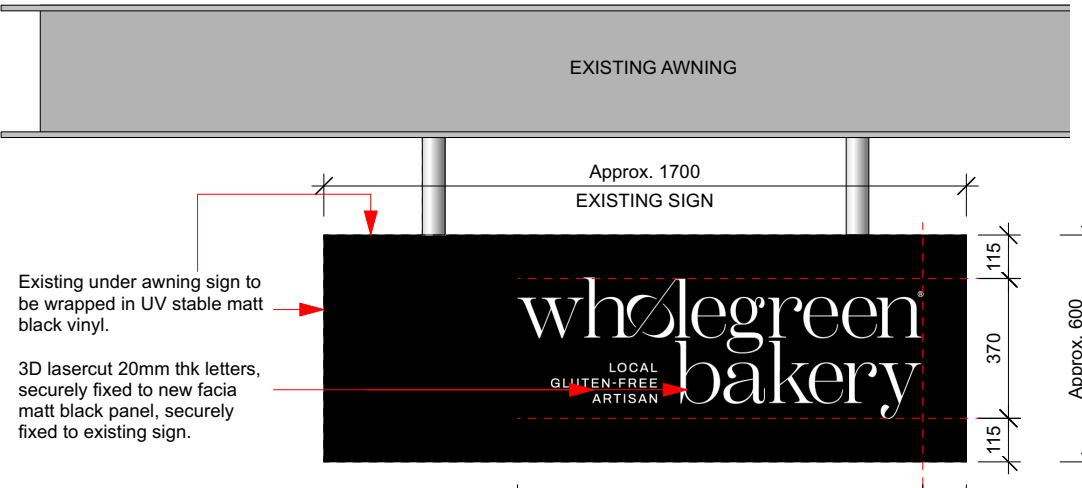
2 SHOPFRONT ELEVATION  
Scale: 1:50



4 SIGNAGE SIDE ELEVATION  
Scale: 1:20



3 SIGNAGE DETAIL  
Scale: 1:20



5 SIGNAGE ELEVATION  
Scale: 1:20

No.	Date	Revision
A	27.03.25	Prelim Planning - For Discussion
B	01.04.25	Prelim Pre DA For Approval
C	03.04.25	DA - Not For Construction
D	09.04.25	DA - Amended Hydraulics & RCP - Not For Construction

## DA SUBMISSION

Original drawing A3 size. Do not scale off this drawing. Contractors shall verify all critical dimensions on site prior to commencement of work. All work to be carried out in accordance with the BCA, Australian Standards and relevant International Countruction Standards. Reproduction of the whole or part of this document constitutes an infringement of copyright. The information ideas and concepts contained in this document are confidential. The recipient(s) of this document is prohibited from disclosing such information, ideas and concepts to any person without the prior written consent of SJS &/or DAAD.

**Project**  
**WHOLEGREEN BAKERY**  
**Wholegreen Bakery Manly**  
Shop 7 / 8-28 THE CORSO, MANLY

**Dwg Title**  
ELEVATIONS - C  
**Dwn**  
SJ/MB  
**Date**  
16.02.25  
**Dwg No.**  
**WGB\_M\_012**  
**Rev**  
**D**